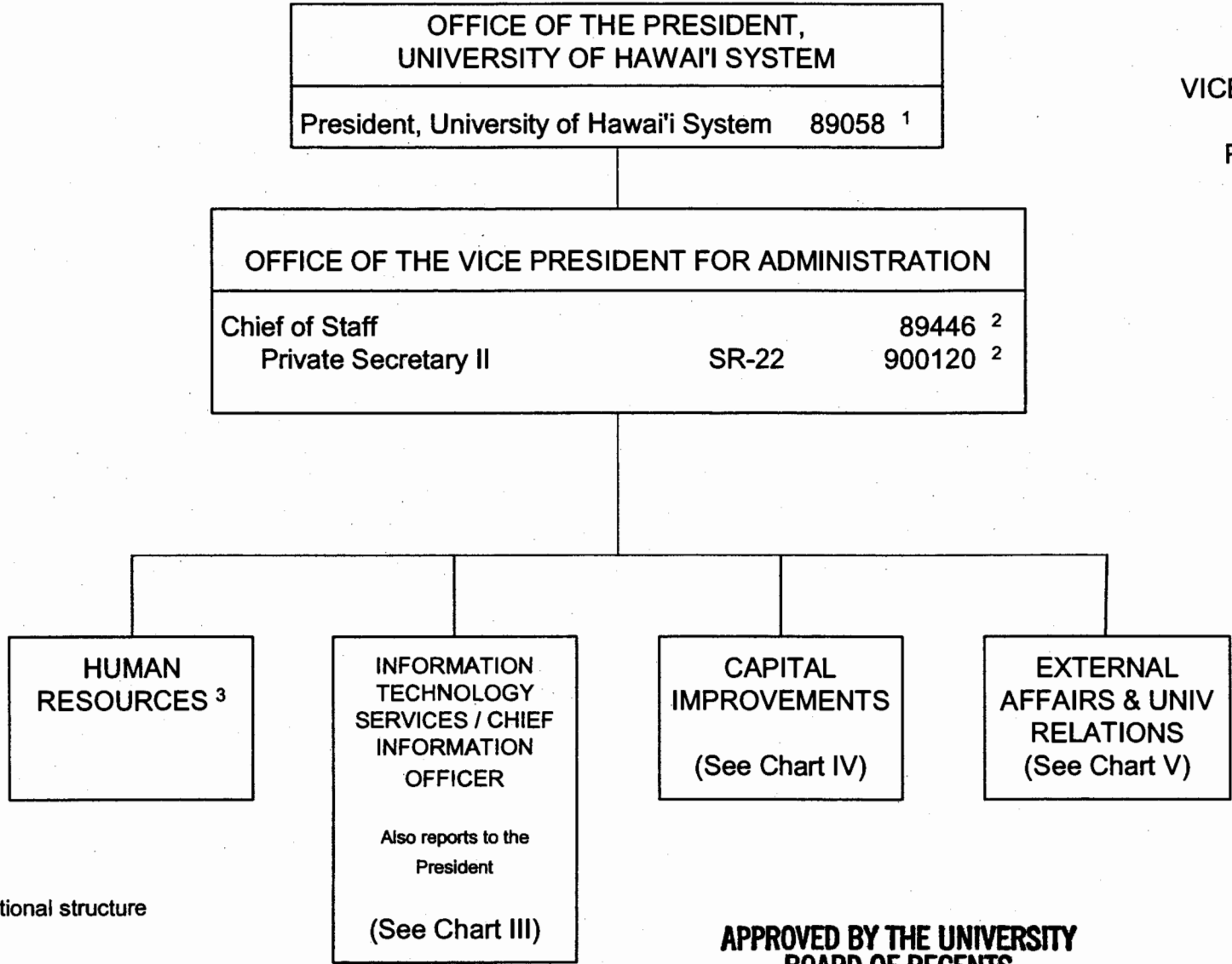


STATE OF HAWAI'I
UNIVERSITY OF HAWAI'I
SYSTEMWIDE ADMINISTRATION
VICE PRESIDENT FOR ADMINISTRATION

POSITION ORGANIZATION CHART

CHART I



¹ Excluded from position count
² To be redescribed
³ No change to internal organizational structure

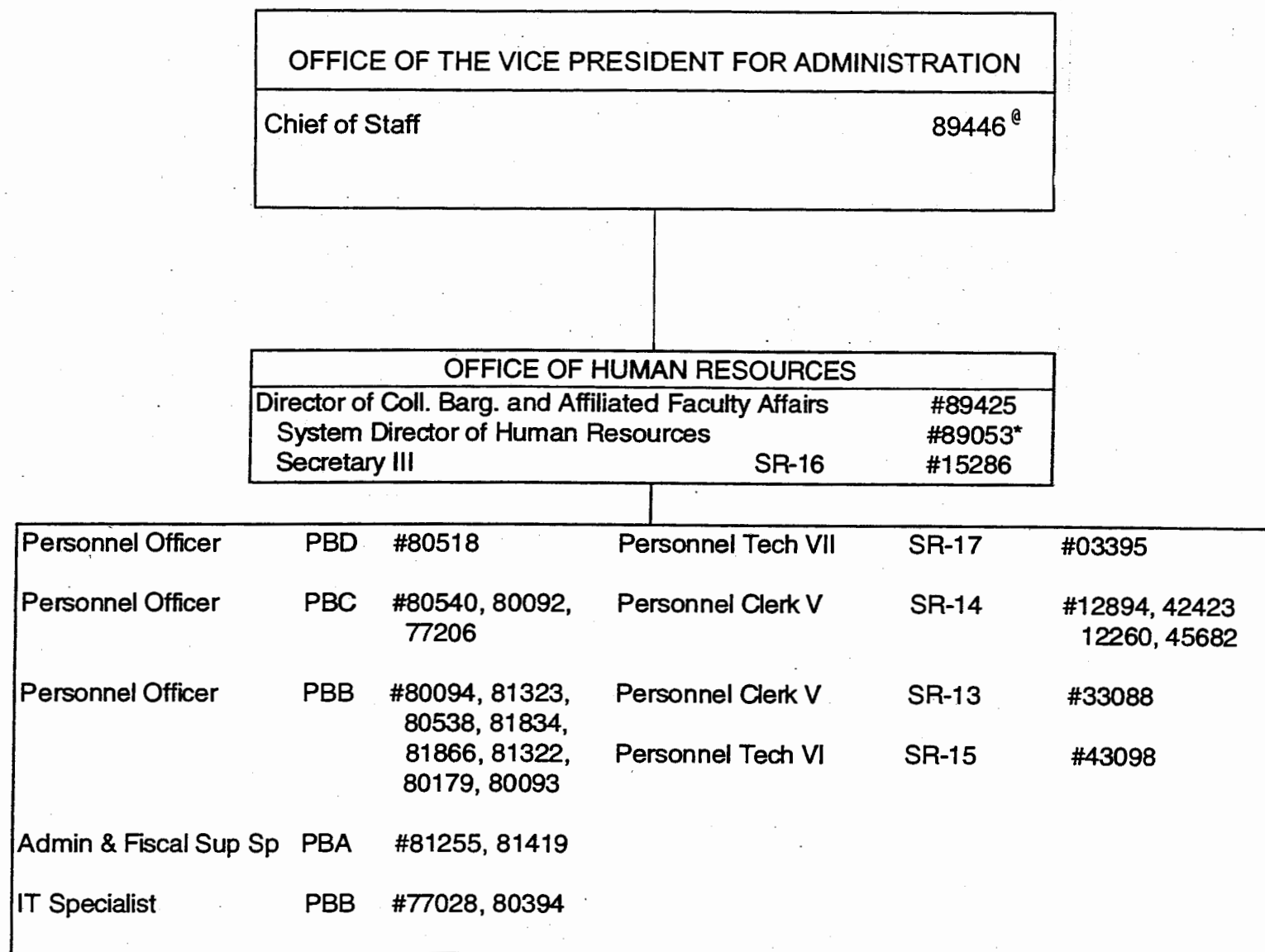
Authorized Position Count (No Current Classification): OTTED 80528
Appropriated but not established: 96850F(W), 96851F(W), 96852F(W), 96853F(W)
To be Abolished (Position Count to be Retained): 89094

APPROVED BY THE UNIVERSITY
BOARD OF REGENTS
NOV 18 2004
Date

	<u>Perm</u>
General Fund	4.00
(W) Revolving Fund	4.00

STATE OF HAWAII
UNIVERSITY OF HAWAII
SYSTEMWIDE ADMINISTRATION
VICE PRESIDENT FOR ADMINISTRATION

POSITION ORGANIZATION CHART



[@]Excluded From Position Count, To Be Redescribed.

* To be redescribed

General Fund Perm
26.00

President, University of Hawai'i
System

Vice President for Administration

STATE OF HAWAII
UNIVERSITY OF HAWAII
SYSTEMWIDE ADMINISTRATION
VICE PRESIDENT FOR ADMINISTRATION
INFORMATION TECHNOLOGY SERVICES

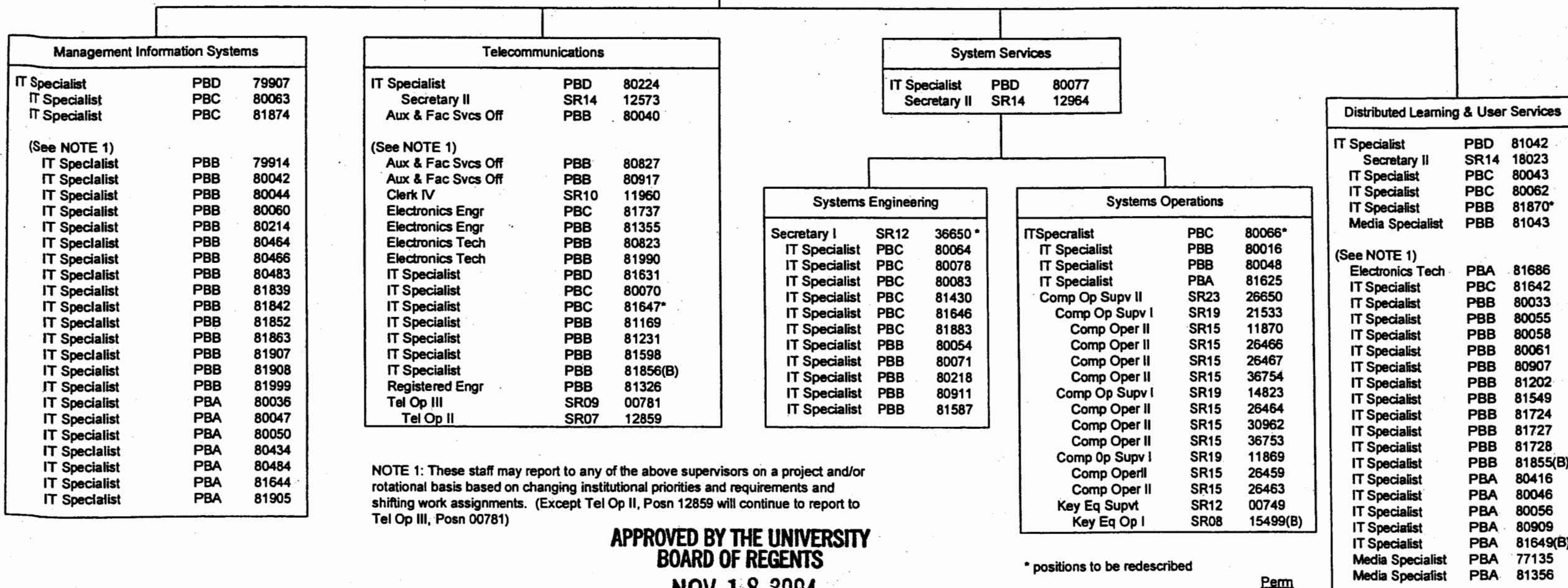
POSITION ORGANIZATION CHART

CHART III

Administrative Services		
Administrative Officer	PBC	80500
Secretary I	SR12	15463
Administrative Officer	PBB	80160
Administrative Officer	PBB	81753
Administrative Officer	PBA	81702
Adm & Fiscal Supp Sp	PBA	81604
Clerk III	SR08	22676

Information Technology Services		
Chief Information Officer		89268

Secretary IV	SR18	40855
Clerk Typist III	SR10	35456
IT Specialist	PBC	80057
Institutional Analyst	PBC	77249



NOTE 1: These staff may report to any of the above supervisors on a project and/or rotational basis based on changing institutional priorities and requirements and shifting work assignments. (Except Tel Op II, Posn 12859 will continue to report to Tel Op III, Posn 00781)

APPROVED BY THE UNIVERSITY
BOARD OF REGENTS

NOV 18 2004

Date

* positions to be redescribed

General Fund
(B) Special Funds

Perm
112.00
4.00

OFFICE OF THE VICE PRESIDENT FOR ADMINISTRATION		
Chief of Staff		89446 ¹

OFFICE OF CAPITAL IMPROVEMENTS		
Director of Capital Improvements		89233

Secretary IV	SR-18	100033 ²
--------------	-------	---------------------

Capital Improvement Prg Off	PBC	80153
-----------------------------	-----	-------

PHYSICAL PLANNING		
Registered Architect	PBC	77086
Secretary ³		
Facilities Planner ³		

PROJECT MANAGEMENT--DESIGN & CONSTRUCTION		
Facilities Planner	PBD	77235
Secretary ³		
Engineer ³		

ADMINISTRATION & SUPPORT SERVICES		
Registered Engineer	PBC	81056
Secretary ³		
Fiscal Accounting Sp ³		
Proc & Prop Mgt Sp ³		
Engineer ³		
Administrative Off ³		
Administrative Off ³		
IT Specialist ³		

STATE OF HAWAII
UNIVERSITY OF HAWAII
SYSTEMWIDE ADMINISTRATION
VICE PRESIDENT FOR ADMINISTRATION
OFFICE OF CAPITAL IMPROVEMENTS

POSITION ORGANIZATION CHART

CHART IV

APPROVED BY THE UNIVERSITY
BOARD OF REGENTS

NOV 18 2004

Date

¹ To be redescribed; excluded from position count

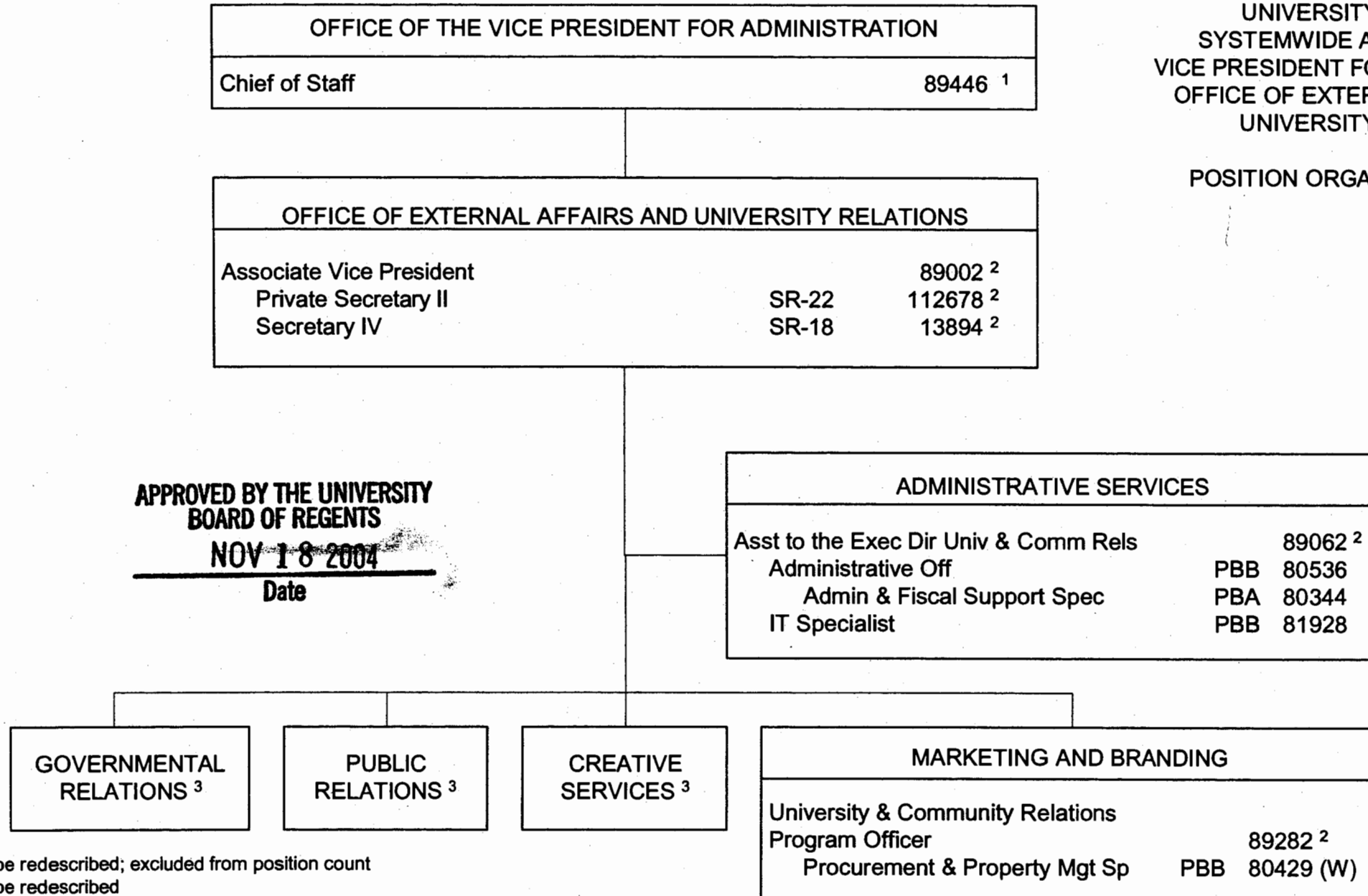
² To be redescribed

³ To be created via reassigned position within the University and/or to be requested

General Fund	<u>Perm</u>
General Fund	6.00
	11.00 (to be reassigned/requested)

STATE OF HAWAII
UNIVERSITY OF HAWAII
SYSTEMWIDE ADMINISTRATION
VICE PRESIDENT FOR ADMINISTRATION
OFFICE OF EXTERNAL AFFAIRS AND
UNIVERSITY RELATIONS

POSITION ORGANIZATION CHART



APPROVED BY THE UNIVERSITY
BOARD OF REGENTS
NOV 18 2004
Date

¹ To be redescribed; excluded from position count

² To be redescribed

³ No change to internal organizational structure

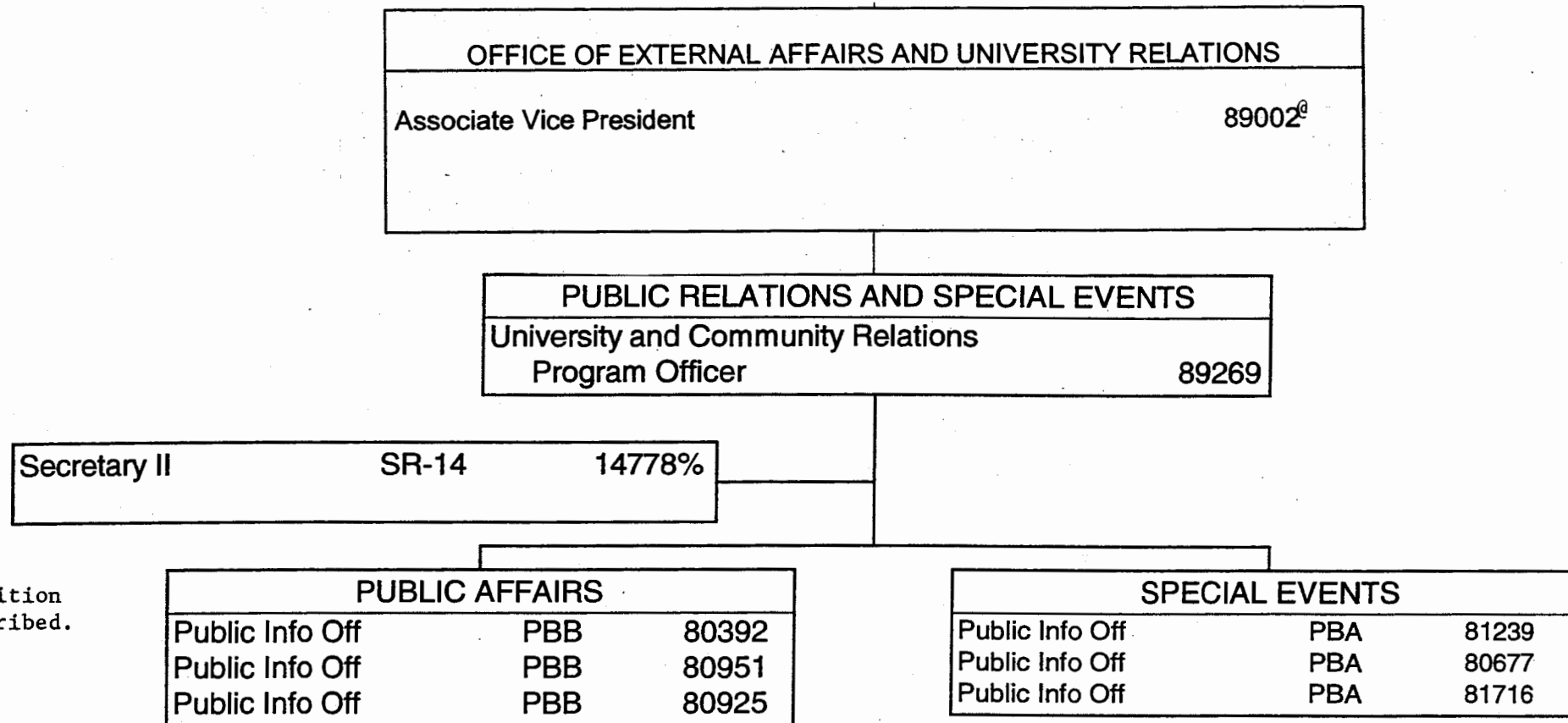
To be Abolished (Position Count to be Retained): 89099

o:\ssa\orgchrt\0921 university relations.vsd

	<u>Perm</u>
General Fund	9.00
Revolving Fund (W)	1.00

STATE OF HAWAII
UNIVERSITY OF HAWAII
SYSTEMWIDE ADMINISTRATION
VICE PRESIDENT FOR ADMINISTRATION
OFFICE OF EXTERNAL AFFAIRS AND
UNIVERSITY RELATIONS

POSITION ORGANIZATION CHART



@ Excluded from position count, to be redescribed.

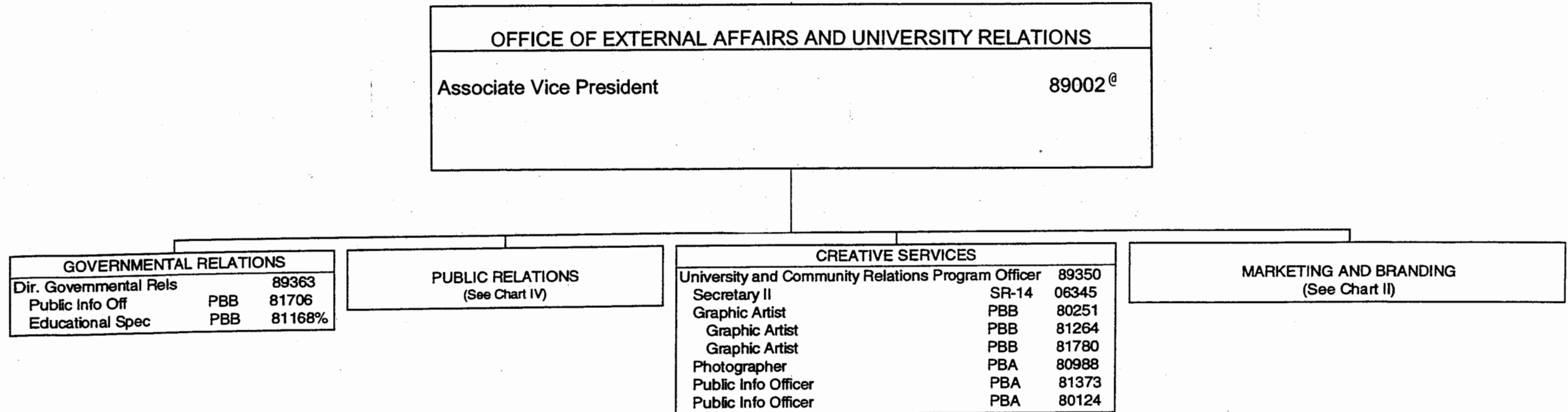
% To be redescribed

NOV 18 2004

General Fund 8.00 Perm

STATE OF HAWAII
UNIVERSITY OF HAWAII
SYSTEMWIDE ADMINISTRATION
VICE PRESIDENT FOR ADMINISTRATION
OFFICE OF EXTERNAL AFFAIRS AND
UNIVERSITY RELATIONS

POSITION ORGANIZATION CHART



@ Excluded from position count
to be redescribed.

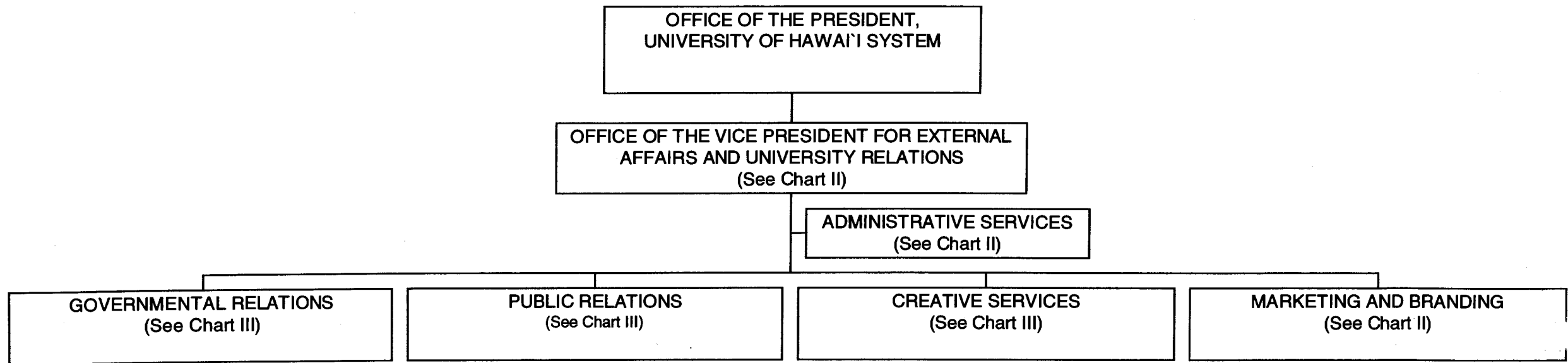
NOV 18 2004

% To be redescribed

General Fund Perm
11.00

STATE OF HAWAII
UNIVERSITY OF HAWAII
SYSTEMWIDE ADMINISTRATION
OFFICE OF THE VICE PRESIDENT FOR
EXTERNAL AFFAIRS AND UNIVERSITY
RELATIONS
POSITION ORGANIZATION CHART

CHART I

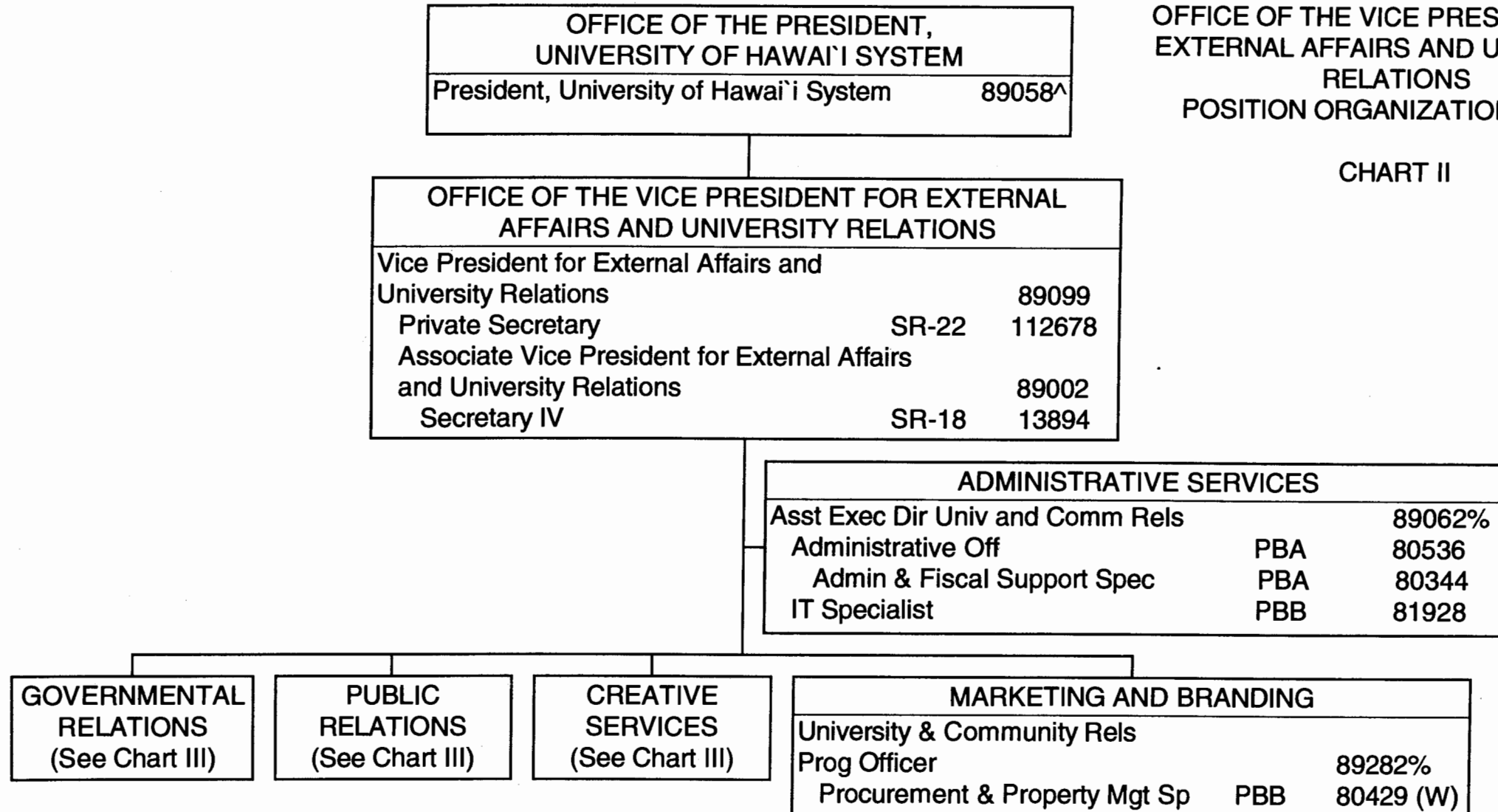


SUPERSEDED
Date NOV 18 2004

CHART UPDATED
DATE JUL 01 2004

STATE OF HAWAII
UNIVERSITY OF HAWAII
SYSTEMWIDE ADMINISTRATION
OFFICE OF THE VICE PRESIDENT FOR
EXTERNAL AFFAIRS AND UNIVERSITY
RELATIONS
POSITION ORGANIZATION CHART

CHART II



SUPERSEDED
Date NOV 18 2004

CHART UPDATED
DATE JUL 01 2004

General Fund
Revolving Funds (W)

Perm
9.00
1.00

% To be redescribed

^ Excluded from position count, this chart

STATE OF HAWAII
UNIVERSITY OF HAWAII
SYSTEMWIDE ADMINISTRATION
OFFICE OF THE VICE PRESIDENT FOR
EXTERNAL AFFAIRS AND UNIVERSITY
RELATIONS
POSITION ORGANIZATION CHART

CHART III

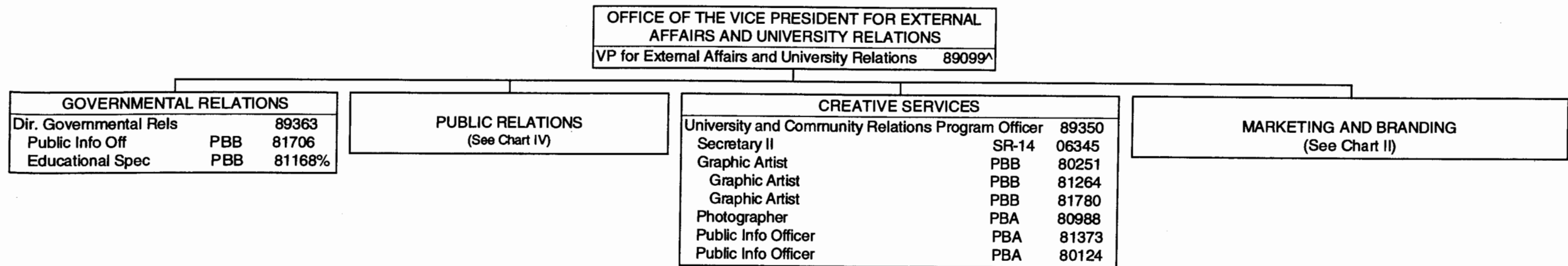


CHART UPDATED
JUL 01 2004
DATE _____

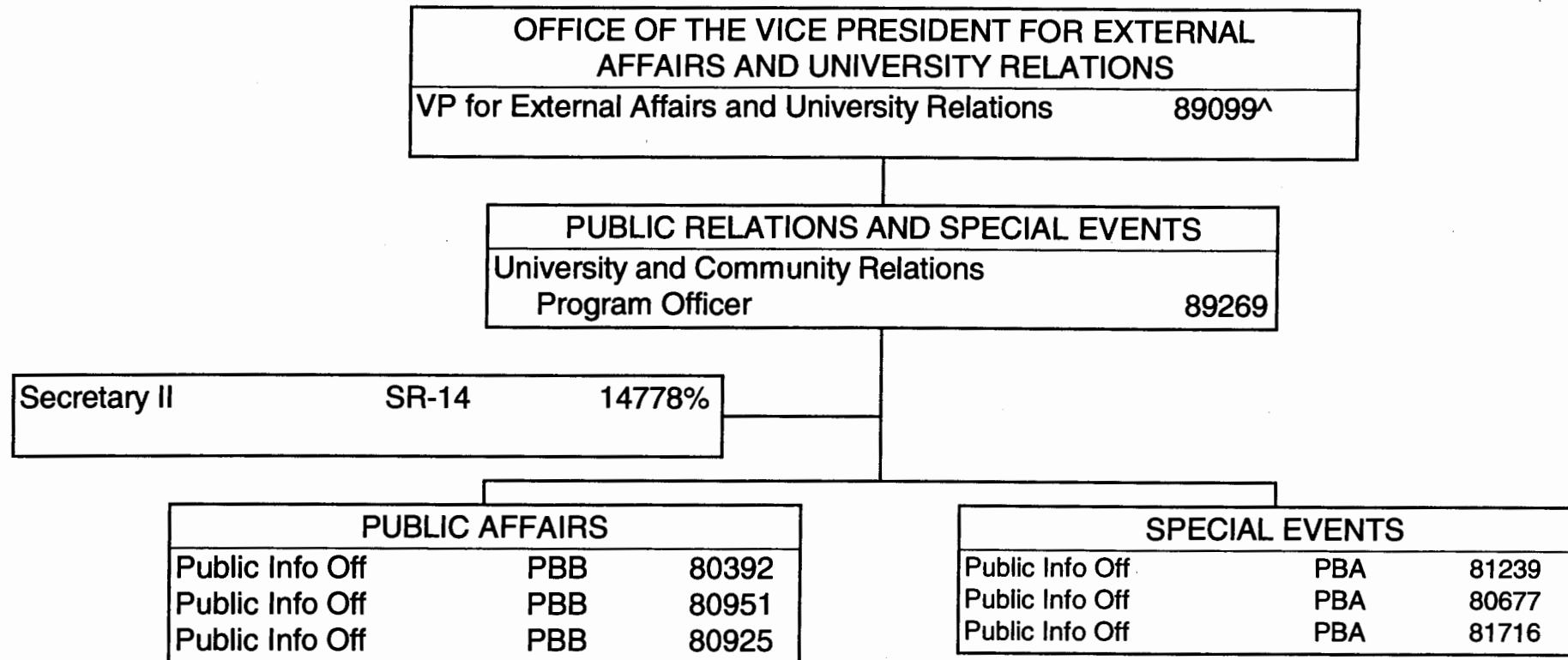
SUPERSEDED
Date NOV 18 2004

% To be redescribed
^ Excluded from position count, this chart

General Fund Perm
11.00

STATE OF HAWAII
UNIVERSITY OF HAWAII
SYSTEMWIDE ADMINISTRATION
OFFICE OF THE VICE PRESIDENT FOR EXTERNAL
AFFAIRS AND UNIVERSITY RELATIONS
POSITION ORGANIZATION CHART

CHART IV



% To be redescribed

^ Excluded from position count, this chart

SUPERSEDED

Date NOV 18 2004

CHART UPDATED

DATE JUL 01 2004 **Perm**
General Fund 8.00