

OFFICE OF THE PRESIDENT, UNIVERSITY OF HAWAII SYSTEM		
President, University of Hawaii System	89058	¹

OFFICE OF THE VICE PRESIDENT FOR BUDGET AND FINANCE / CHIEF FINANCIAL OFFICER		
VP for Budget and Finance/CFO Private Secretary II	SR-22	89283 100055 ²

UNIVERSITY BUDGET OFFICE ³
--

FINANCIAL MANAGEMENT ³

CENTRAL ADMINISTRATIVE AFFAIRS		
Dlr of Sys Admin Affrs		89310
Sec II	SR-14	22222
Admin Off	PBC	81463
Admin Off	PBB	81173
Admin Off	PBA	80423
Adm & Fis Sup Sp	PBA	80905 ²

STATE OF HAWAII
UNIVERSITY OF HAWAII
SYSTEMWIDE ADMINISTRATION
VICE PRESIDENT FOR
BUDGET AND FINANCE /
CHIEF FINANCIAL OFFICER

POSITION ORGANIZATION CHART

- ¹ Excluded from position count
- ² To be redescribed
- ³ No change to internal organizational structure

APPROVED BY THE UNIVERSITY
BOARD OF REGENTS

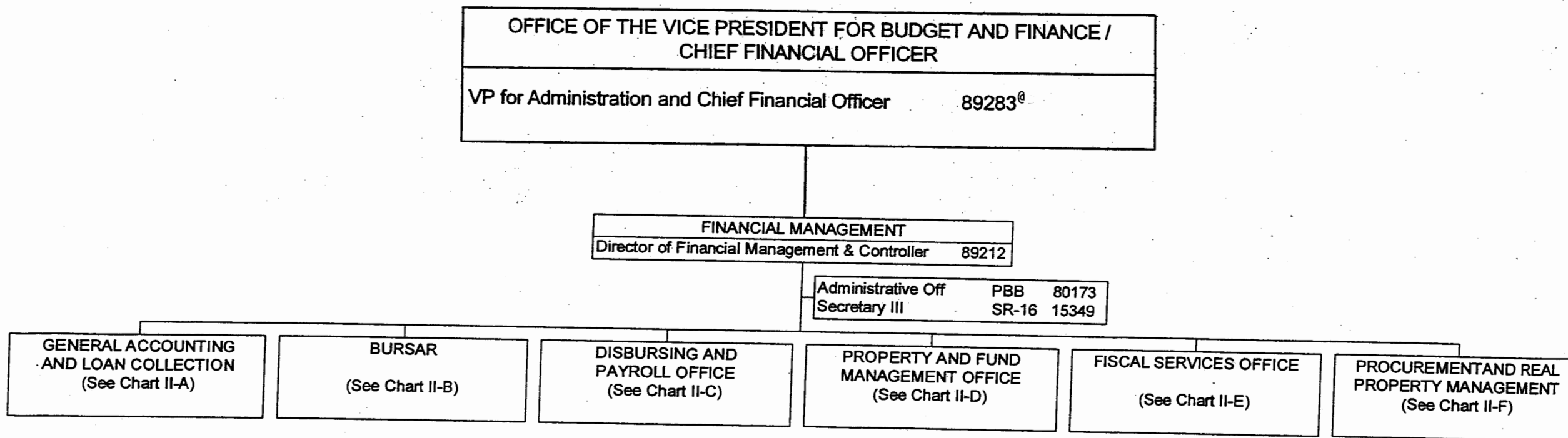
JUN 21 2005

Date

General Fund Perm
8.00

STATE OF HAWAII
UNIVERSITY OF HAWAII
SYSTEMWIDE ADMINISTRATION
VICE PRESIDENT FOR
BUDGET AND FINANCE /
CHIEF FINANCIAL OFFICER

POSITION ORGANIZATION CHART



@Excluded From Position Count, To Be Redescribed.

NOV 18 2004

General Fund Perm
3.00

FINANCIAL MANAGEMENT		
Director of Financial Management & Controller	89212^	

GENERAL ACCOUNTING AND LOAN COLLECTION		
Fiscal Accounting Sp	PBD	80150
Fiscal Accounting Sp	PBB	80349
Fiscal Accounting Sp	PBB	80549
Fiscal Accounting Sp	PBB	81409
Fiscal Accounting Sp	PBB	80346
Fiscal Accounting Sp	PBB	81370
Fiscal Accounting Sp	PBA	80205 (N)
Fiscal Accounting Sp	PBA	81862 (N)
Fiscal Accounting Sp	PBA	80888
Fiscal Accounting Sp	PBB	80347
Fiscal Accounting Sp	PBB	80141
Fiscal Accounting Sp	PBB	81407
Fiscal Accounting Sp	PBB	81978
Fiscal Accounting Sp	PBB	77296
Fiscal Accounting Sp	PBB	81814 (N)
Adm & Fiscal Support Sp	PBA	80856 (N)
Administrative Off	PBA	80333 (N)
Adm & Fiscal Support Sp	PBA	80842 (N)
Fiscal Accounting Sp	PBA	81499
Fiscal Accounting Sp	PBA	81962 (N)
Fiscal Accounting Sp	PBA	81479 (N)

STATE OF HAWAII
UNIVERSITY OF HAWAII
SYSTEMWIDE ADMINISTRATION
VICE PRESIDENT FOR
BUDGET AND FINANCE /
CHIEF FINANCIAL OFFICER

POSITION ORGANIZATION CHART

CHART II-A

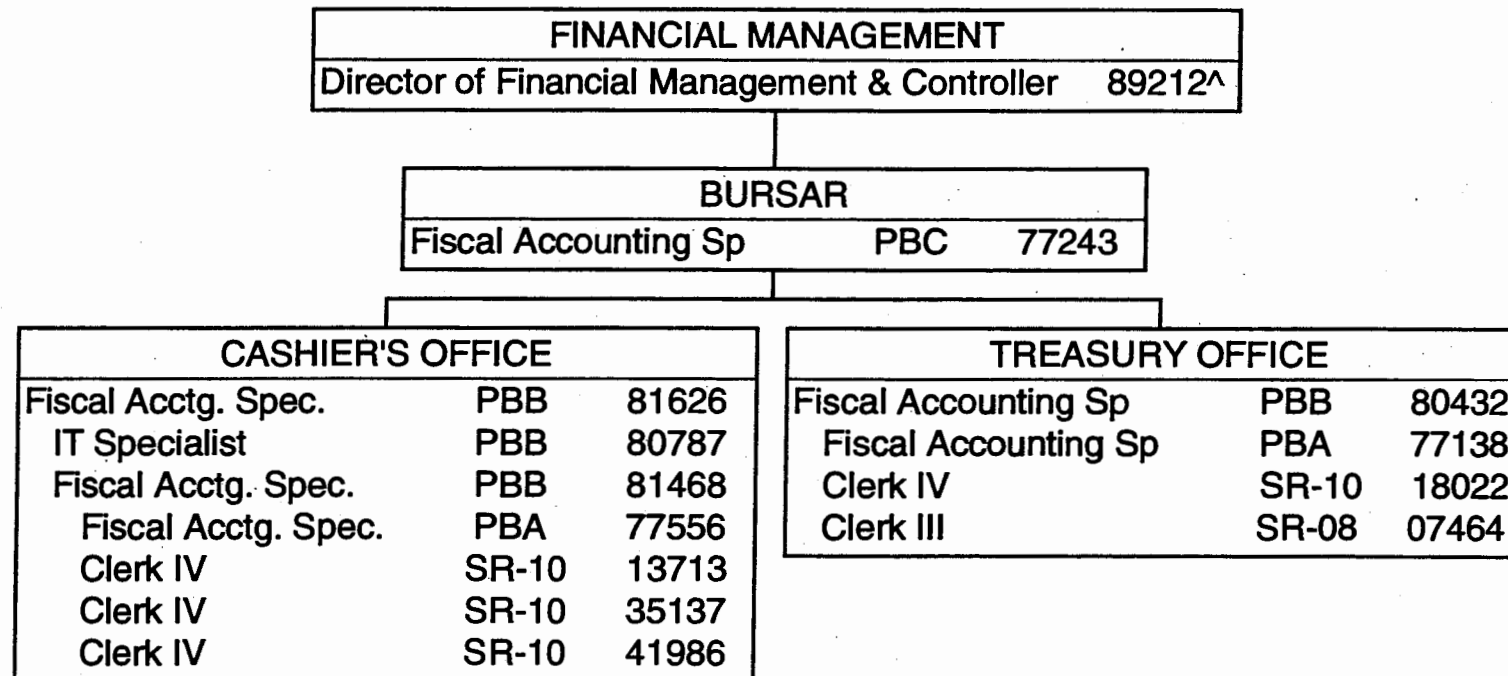
^ Excluded from position count, this chart

	<u>Perm</u>
General Fund	13.00
Federal Funds (N)	8.00

NOV 18 2004

STATE OF HAWAII
UNIVERSITY OF HAWAII
SYSTEMWIDE ADMINISTRATION
VICE PRESIDENT FOR
BUDGET AND FINANCE /
CHIEF FINANCIAL OFFICER

POSITION ORGANIZATION CHART
CHART II-B



^ Excluded from position count, this chart

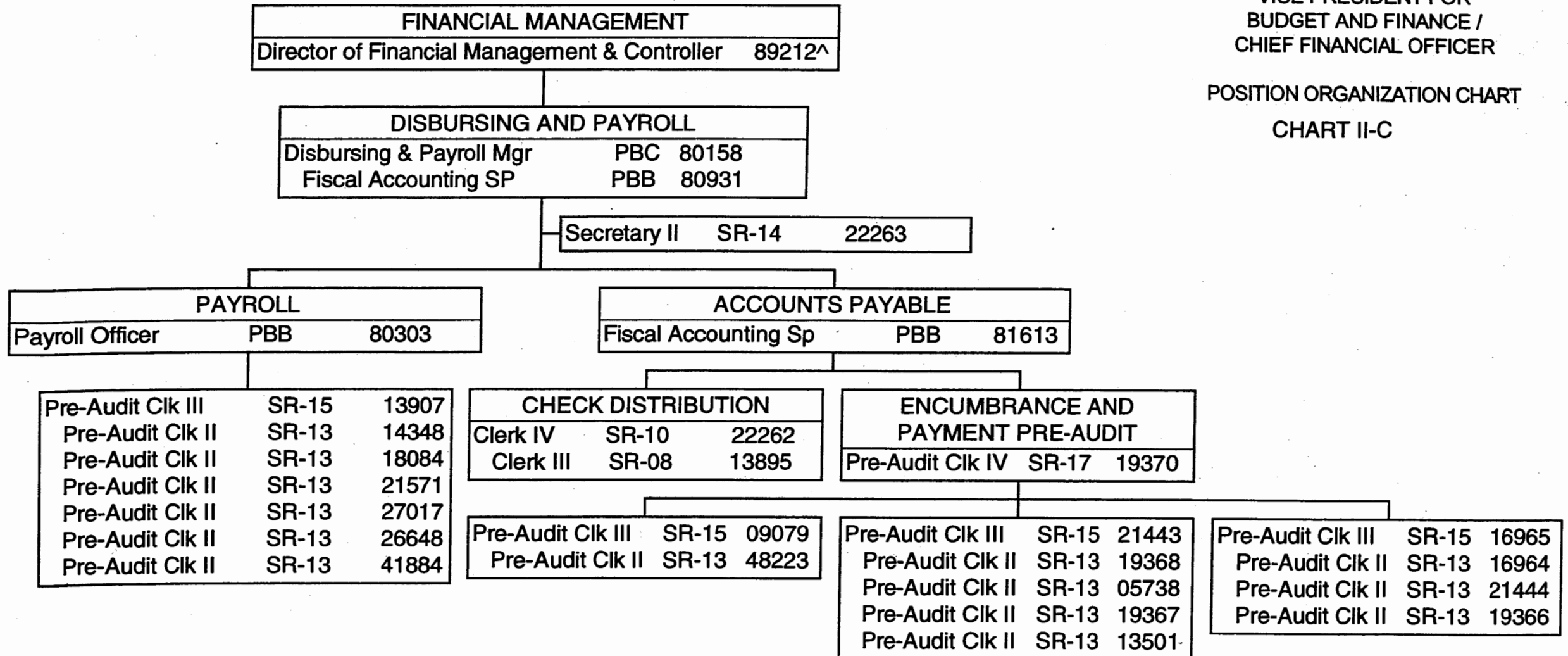
NOV 18 2004

General Fund

Perm
12.00

STATE OF HAWAII
UNIVERSITY OF HAWAII
SYSTEMWIDE ADMINISTRATION
VICE PRESIDENT FOR
BUDGET AND FINANCE /
CHIEF FINANCIAL OFFICER

POSITION ORGANIZATION CHART
CHART II-C



^ Excluded from position count, this chart

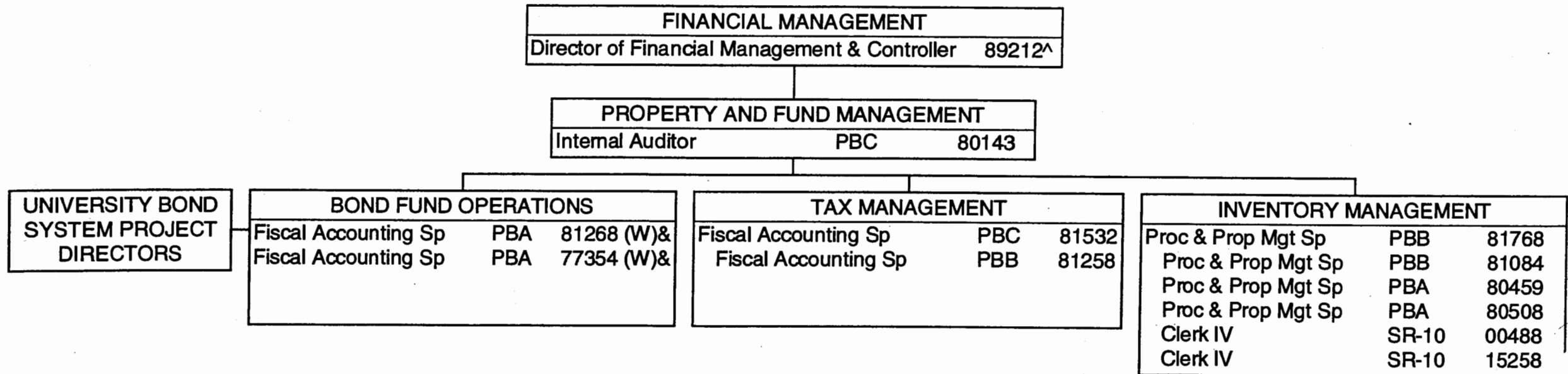
NOV 18 2004

General Fund

Perm
26.00

STATE OF HAWAII
UNIVERSITY OF HAWAII
SYSTEMWIDE ADMINISTRATION
VICE PRESIDENT FOR
BUDGET AND FINANCE /
CHIEF FINANCIAL OFFICER

POSITION ORGANIZATION CHART
CHART II-D



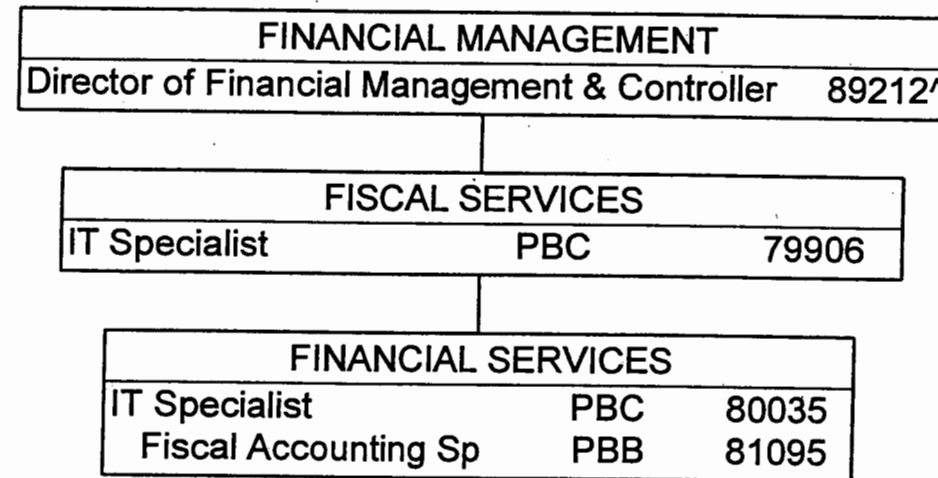
^ Excluded from position count, this chart
& Position count on this chart not part of the appropriation for
UOH 903, reflected organizationally on this chart

NOV 18 2004

	<u>Perm</u>
General Fund	9.00
(W) Revolving Fund	2.00&

STATE OF HAWAII
 UNIVERSITY OF HAWAII
 SYSTEMWIDE ADMINISTRATION
 VICE PRESIDENT FOR
 BUDGET AND FINANCE /
 CHIEF FINANCIAL OFFICER

POSITION ORGANIZATION CHART
 CHART II-E



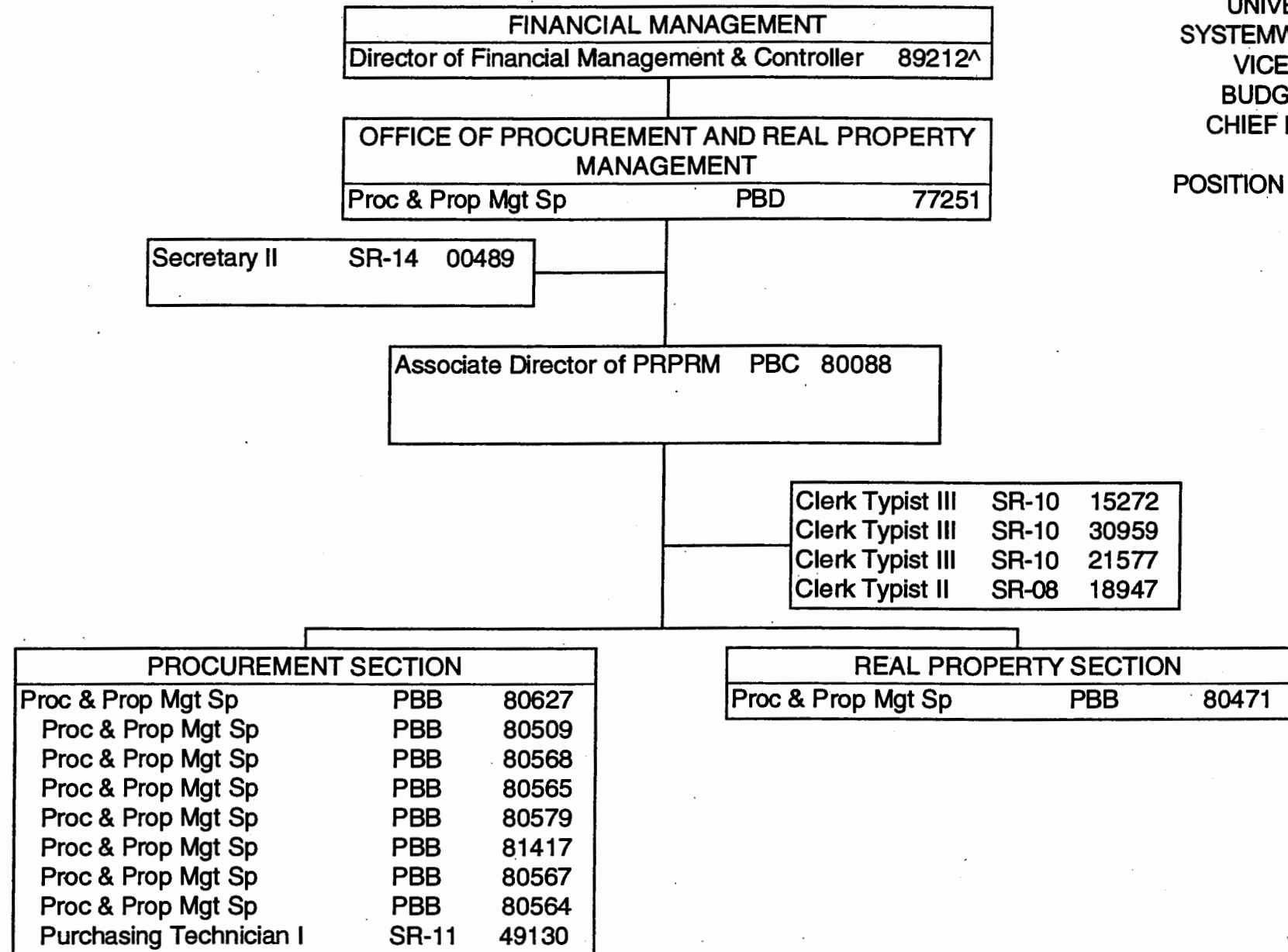
^ Excluded from position count, this chart

NOV 18 2004

General Fund Perm 3.00

STATE OF HAWAII
UNIVERSITY OF HAWAII
SYSTEMWIDE ADMINISTRATION
VICE PRESIDENT FOR
BUDGET AND FINANCE /
CHIEF FINANCIAL OFFICER

POSITION ORGANIZATION CHART
CHART II-F



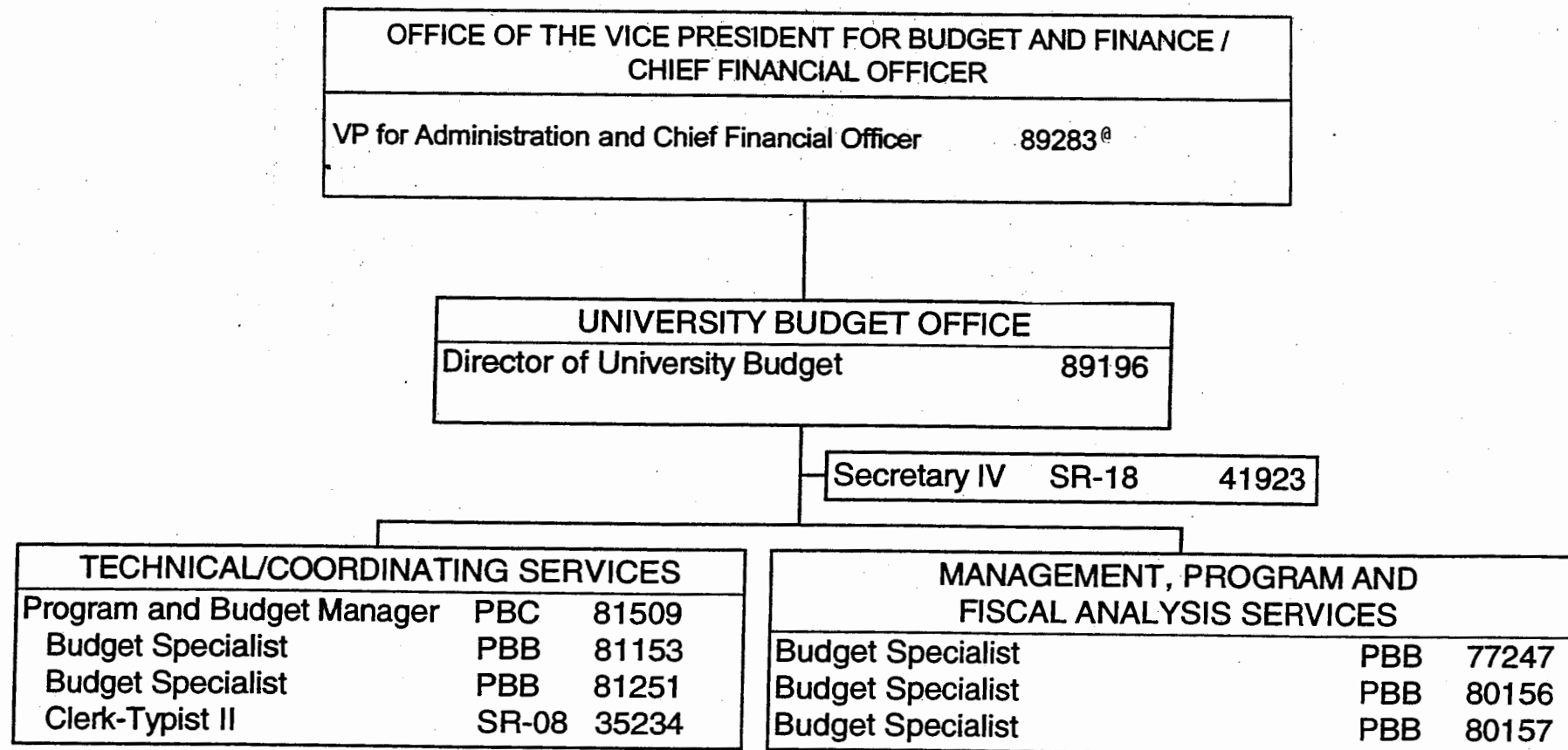
^ Excluded from position count, this chart

NOV 18 2004

General Fund Pem
17.00

STATE OF HAWAII
UNIVERSITY OF HAWAII
SYSTEMWIDE ADMINISTRATION
VICE PRESIDENT FOR
BUDGET AND FINANCE /
CHIEF FINANCIAL OFFICER

POSITION ORGANIZATION CHART



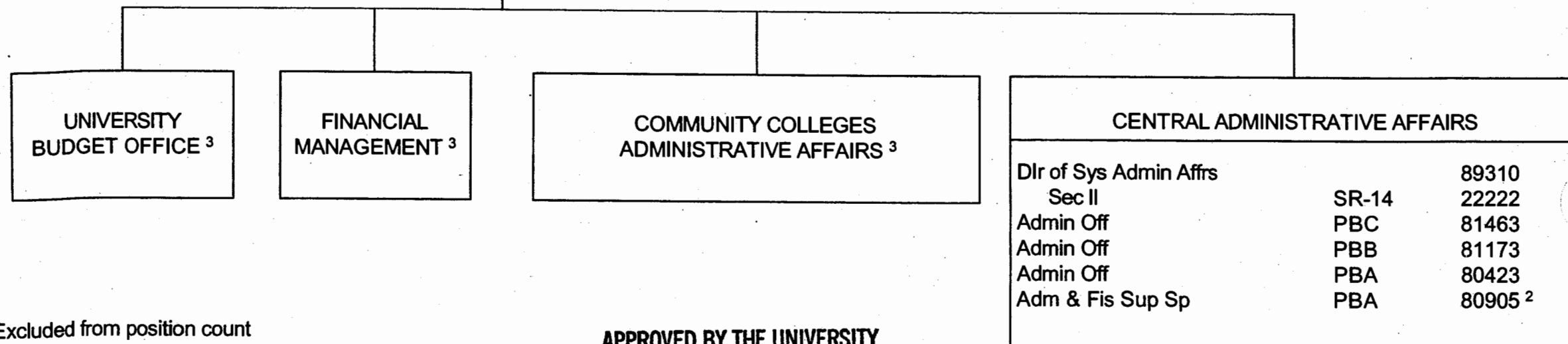
[@] Excluded From Position Count, To Be Redescribed.

NOV 18 2004

General Fund Perm
9.00

OFFICE OF THE PRESIDENT, UNIVERSITY OF HAWAII SYSTEM		
President, University of Hawai'i System	89058	¹

OFFICE OF THE VICE PRESIDENT FOR BUDGET AND FINANCE / CHIEF FINANCIAL OFFICER		
VP for Administration and Chief Financial Officer	89283	²
Private Secretary II	SR-22	100055 ²



STATE OF HAWAII
UNIVERSITY OF HAWAII
SYSTEMWIDE ADMINISTRATION
VICE PRESIDENT FOR
BUDGET AND FINANCE /
CHIEF FINANCIAL OFFICER

POSITION ORGANIZATION CHART

CHART I

- ¹ Excluded from position count
² To be redescribed
³ No change to internal organizational structure

APPROVED BY THE UNIVERSITY
BOARD OF REGENTS
NOV 18 2004

Date

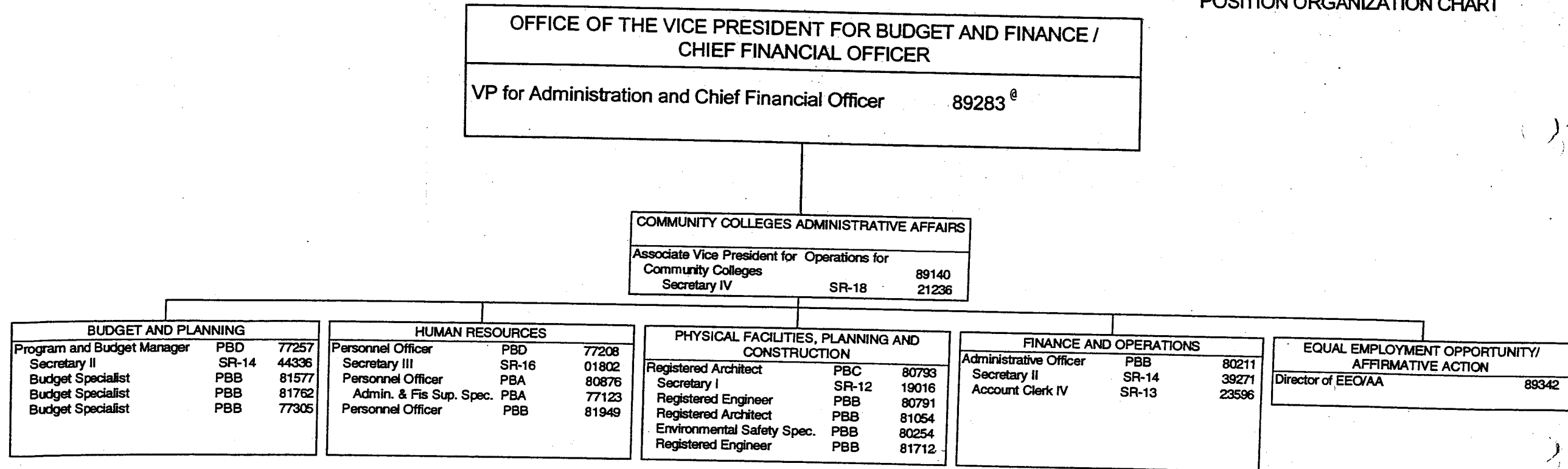
SUPERSEDED
Date JUN 21 2005

General Fund

Perm
8.00

STATE OF HAWAII
UNIVERSITY OF HAWAII
SYSTEMWIDE ADMINISTRATION
VICE PRESIDENT FOR
BUDGET AND FINANCE /
CHIEF FINANCIAL OFFICER

POSITION ORGANIZATION CHART



[@] Excluded From Position Count, To Be Redescribed.

NOTE: All positions in Community Colleges Administrative Affairs to be redescribed.

SUPERSEDED
Date JUN 21 2005

NOV 18 2004

General Fund Perm
22.00

STATE OF HAWAII
UNIVERSITY OF HAWAII
SYSTEMWIDE ADMINISTRATION
VICE PRESIDENT FOR ADMINISTRATION AND
CHIEF FINANCIAL OFFICER

POSITION ORGANIZATION CHART

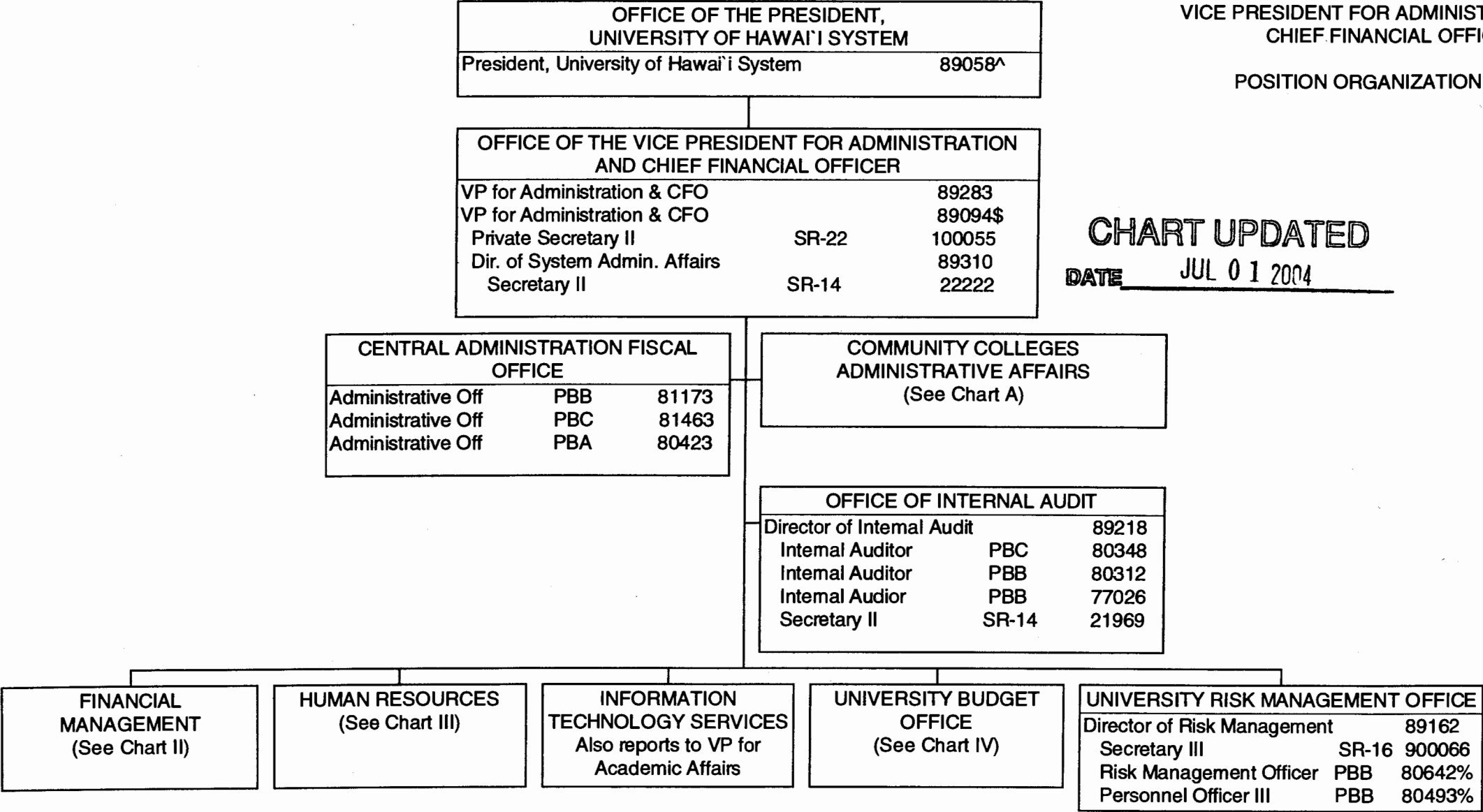


CHART UPDATED
DATE JUL 01 2004

\$ Position to be redescribed upon employee's completion of leave
% Position to be redescribed
Reserve Positions: OTTED 80528, Aux Svs 89293
Appropriated but not established: 96850F(W), 96851F(W), 96852F(W), 96853F(W)

SUPERSEDED
Date NOV 18 2004

STATE OF HAWAII
UNIVERSITY OF HAWAII
SYSTEMWIDE ADMINISTRATION
VICE PRESIDENT FOR ADMINISTRATION
AND CHIEF FINANCIAL OFFICER
FINANCIAL MANAGEMENT
GENERAL ACCOUNTING AND LOAN
COLLECTION OFFICE
POSITION ORGANIZATION CHART

CHART II-A

FINANCIAL MANAGEMENT		
Director of Financial Management & Controller 89212^		
GENERAL ACCOUNTING AND LOAN COLLECTION		
Fiscal Accounting Sp	PBD	80150
Fiscal Accounting Sp	PBB	80349
Fiscal Accounting Sp	PBB	80549
Fiscal Accounting Sp	PBB	81409
Fiscal Accounting Sp	PBB	80346
Fiscal Accounting Sp	PBB	81370
Fiscal Accounting Sp	PBA	80205 (N)
Fiscal Accounting Sp	PBA	81862 (N)
Fiscal Accounting Sp	PBA	80888
Fiscal Accounting Sp	PBB	80347
Fiscal Accounting Sp	PBB	80141
Fiscal Accounting Sp	PBB	81407
Fiscal Accounting Sp	PBB	81978
Fiscal Accounting Sp	PBB	77296
Fiscal Accounting Sp	PBB	81814 (N)
Adm & Fiscal Support Sp	PBA	80856 (N)
Administrative Off	PBA	80333 (N)
Adm & Fiscal Support Sp	PBA	80842 (N)
Fiscal Accounting Sp	PBA	81499
Fiscal Accounting Sp	PBA	81962 (N)
Fiscal Accounting Sp	PBA	81479 (N)

CHART UPDATED
JUL 01 2004
DATE _____

^ Excluded from position count, this chart

SUPERSEDED
Date NOV 18 2004

General Fund	<u>Perm</u> 13.00
Federal Funds (N)	8.00

STATE OF HAWAII
 UNIVERSITY OF HAWAII
 SYSTEMWIDE ADMINISTRATION
 VICE PRESIDENT FOR ADMINISTRATION
 AND CHIEF FINANCIAL OFFICER
 FINANCIAL MANAGEMENT
 BURSAR
 POSITION ORGANIZATION CHART

CHART II-B

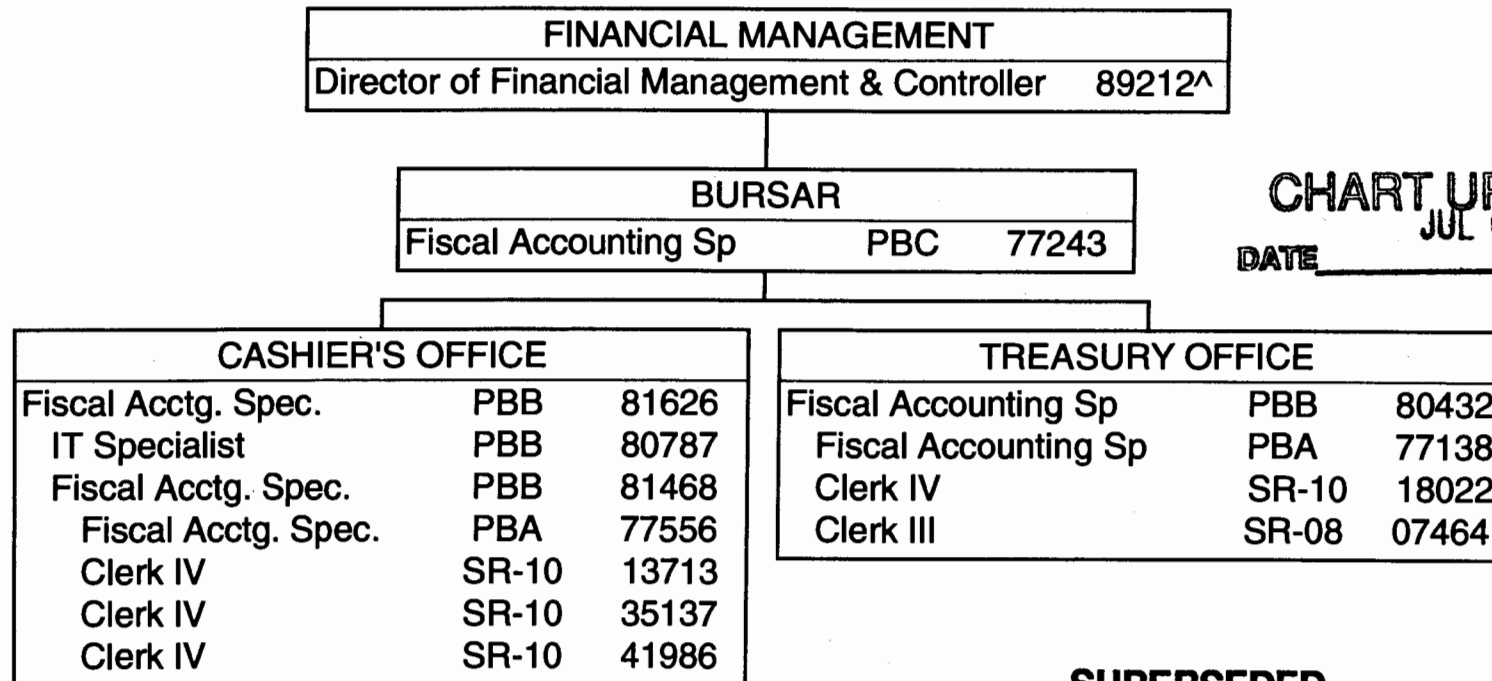


CHART UPDATED
 JUL 01 2004
 DATE _____

SUPERSEDED
 Date NOV 18 2004

^ Excluded from position count, this chart

General Fund Perm
 12.00

STATE OF HAWAII
UNIVERSITY OF HAWAII
SYSTEMWIDE ADMINISTRATION
VICE PRESIDENT FOR ADMINISTRATION
AND CHIEF FINANCIAL OFFICER
FINANCIAL MANAGEMENT
DISBURSING AND PAYROLL OFFICE
POSITION ORGANIZATION CHART

CHART II-C

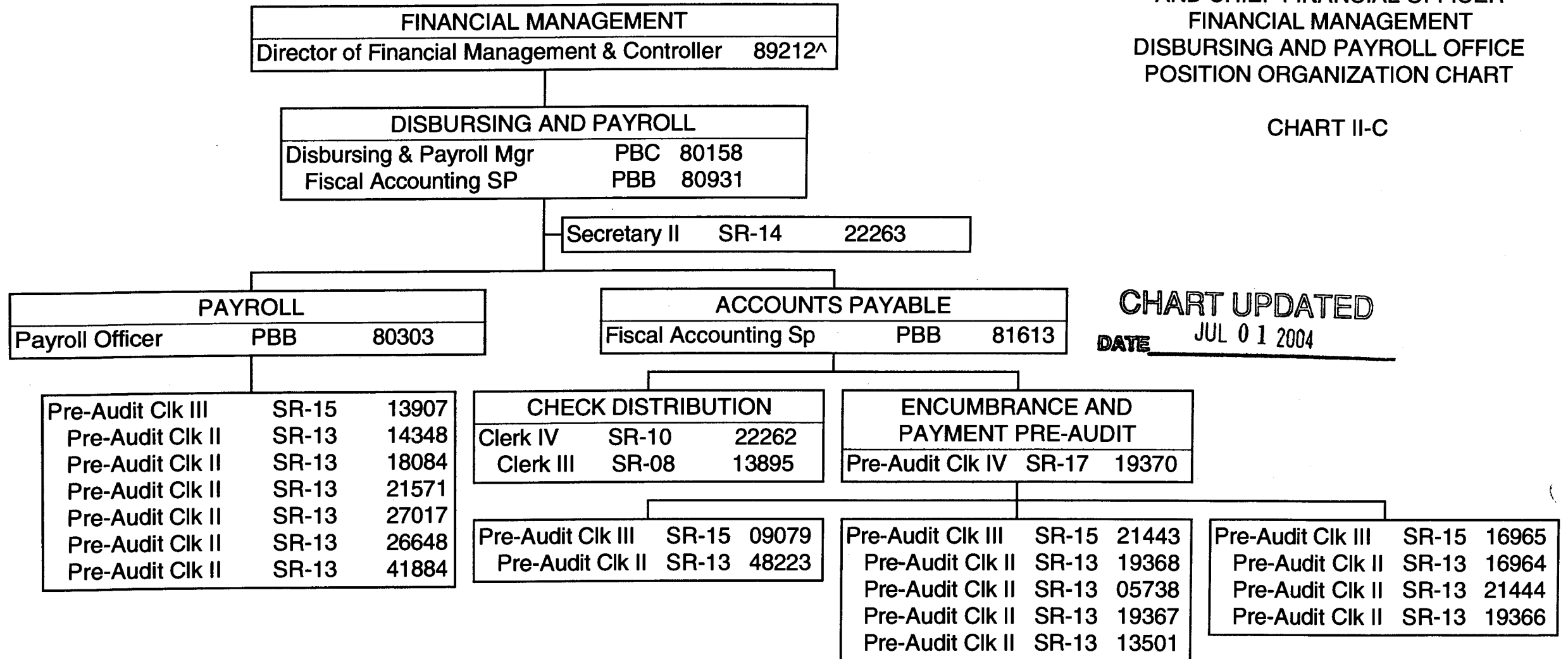


CHART UPDATED
DATE JUL 01 2004

SUPERSEDED
Date NOV 18 2004

^ Excluded from position count, this chart

General Fund Perm
26.00

STATE OF HAWAII
 UNIVERSITY OF HAWAII
 SYSTEMWIDE ADMINISTRATION
 VICE PRESIDENT FOR ADMINISTRATION
 AND CHIEF FINANCIAL OFFICER
 FINANCIAL MANAGEMENT
 PROPERTY AND FUND MANAGEMENT
 POSITION ORGANIZATION CHART

CHART II-D

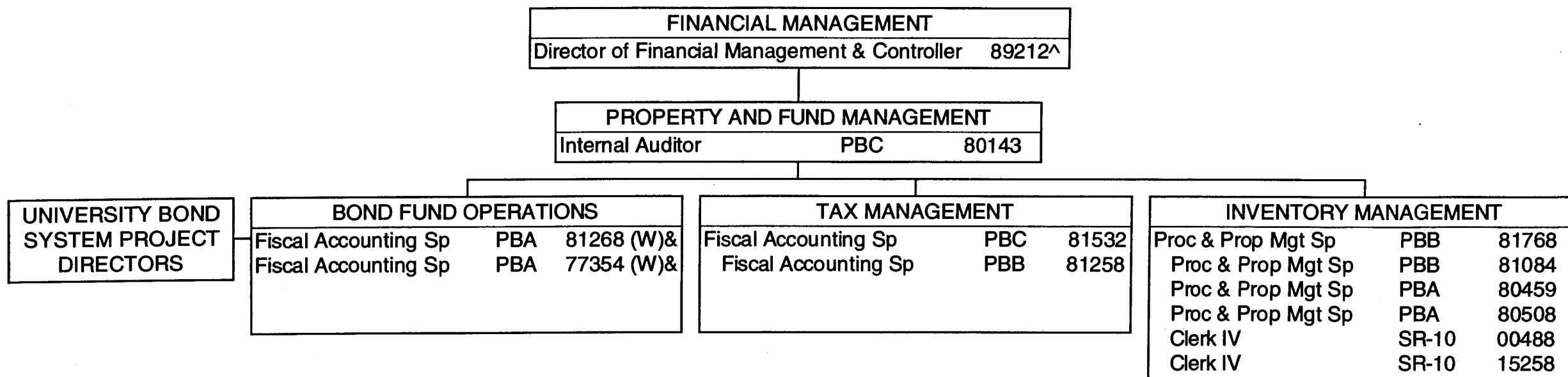


CHART UPDATED

DATE JUL 01 2004

SUPERSEDED

Date NOV 18 2004

^ Excluded from position count, this chart
 & Position count on this chart not part of the appropriation for
 UOH 903, reflected organizationally on this chart

	<u>Perm</u>
General Fund	9.00
(W) Revolving Fund	2.00&

STATE OF HAWAII
 UNIVERSITY OF HAWAII
 SYSTEMWIDE ADMINISTRATION
 VICE PRESIDENT FOR ADMINISTRATION
 AND CHIEF FINANCIAL OFFICER
 FINANCIAL MANAGEMENT
 FISCAL SERVICES OFFICE
 POSITION ORGANIZATION CHART

CHART II-E

FINANCIAL MANAGEMENT		
Director of Financial Management & Controller 89212^		

FISCAL SERVICES		
IT Specialist	PBC	79906

FINANCIAL SERVICES		
IT Specialist	PBC	80035
Fiscal Accounting Sp	PBB	81095

CHART UPDATED
 DATE JUL 01 2004

SUPERSEDED
 Date NOV 18 2004

^ Excluded from position count, this chart

General Fund Perm
 3.00

STATE OF HAWAII
 UNIVERSITY OF HAWAII
 SYSTEMWIDE ADMINISTRATION
 VICE PRESIDENT FOR ADMINISTRATION
 AND CHIEF FINANCIAL OFFICER
 FINANCIAL MANAGEMENT
 OFFICE OF PROCUREMENT AND REAL
 PROPERTY MANAGEMENT
 POSITION ORGANIZATION CHART

CHART II-F

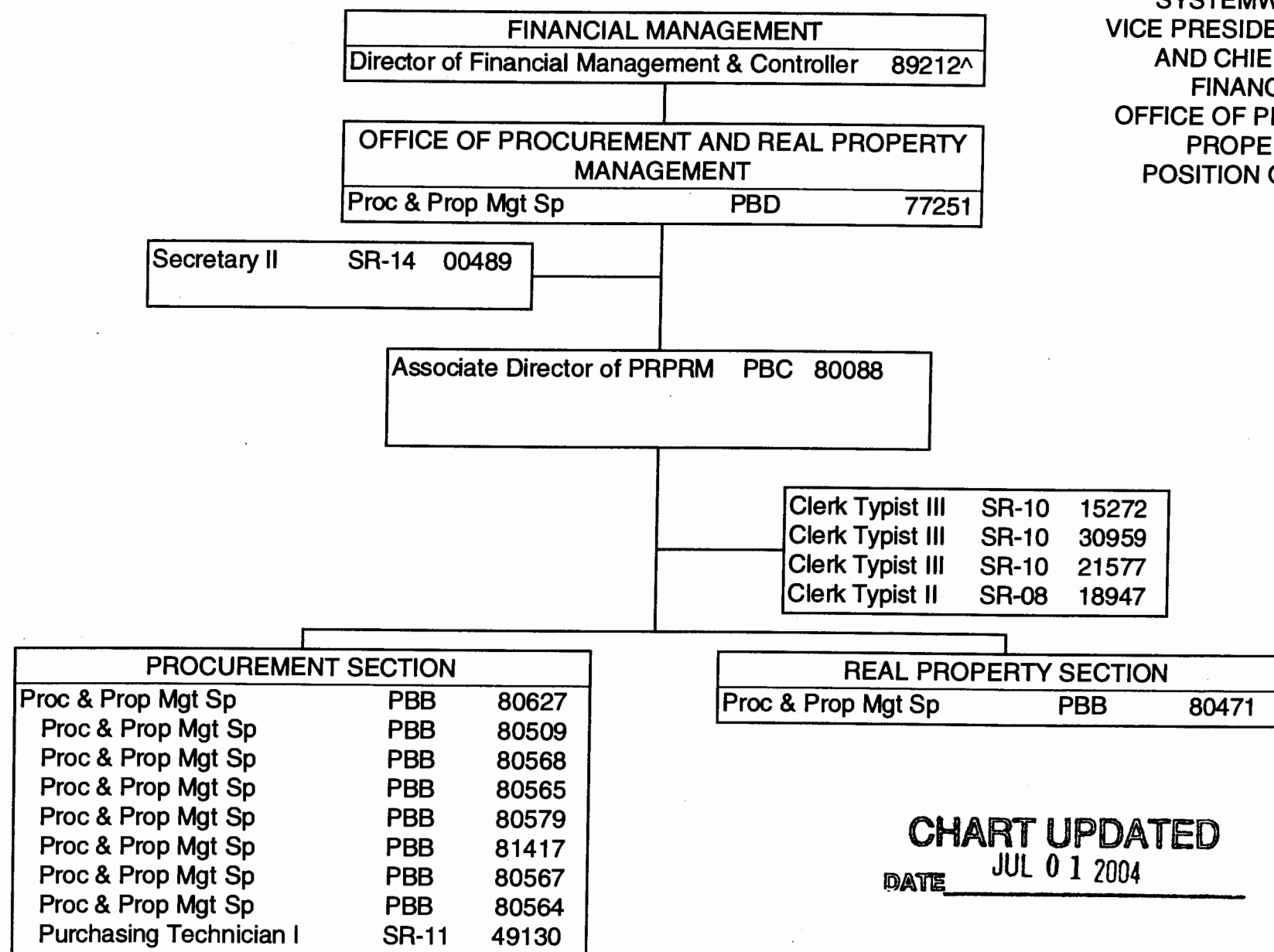


CHART UPDATED
 DATE JUL 01 2004

SUPERSEDED
 Date NOV 18 2004

^ Excluded from position count, this chart

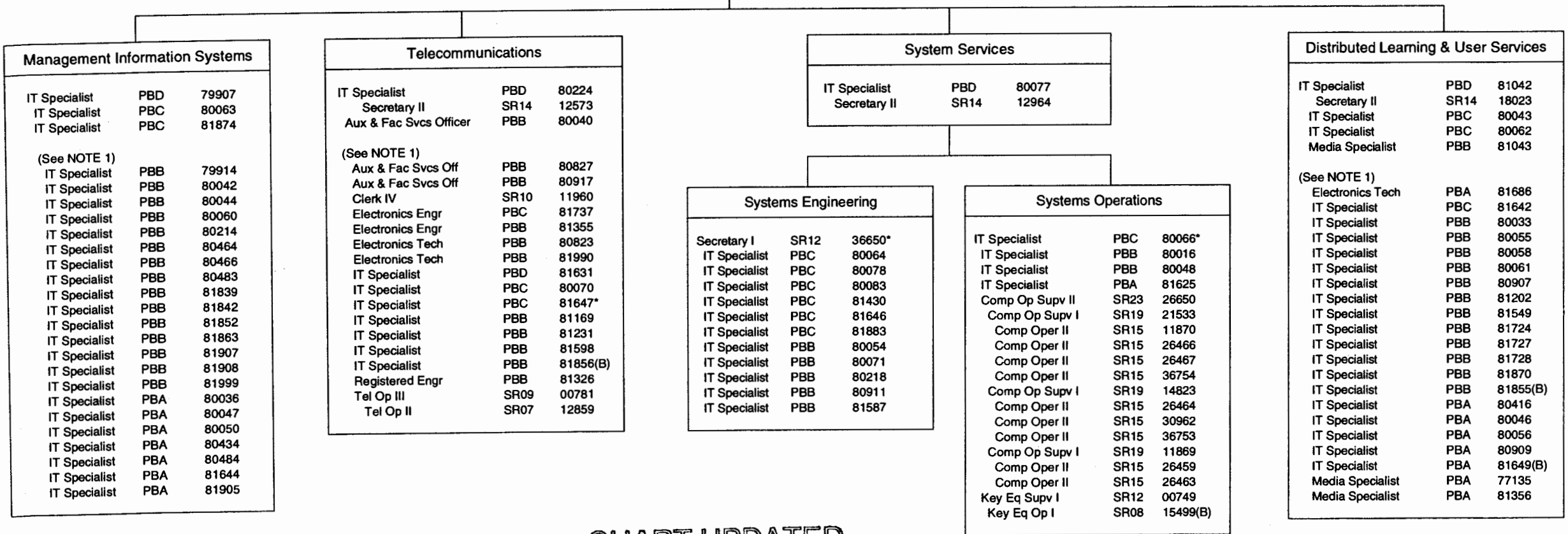
Chart IV

Information Technology Services

Chief Information Officer 89268

Administrative Services			
Administrative Officer	PBC	80500	
Secretary I	SR12	15463	
Administrative Officer	PBB	80160	
Administrative Officer	PBB	81753	
Administrative Officer	PBA	81702	
Adm & Fiscal Supp Sp	PBA	81604	
Clerk III	SR08	22676	

Secretary III	SR16	40855
Clerk Typist III	SR10	35456
IT Specialist	PBC	80057
Institutional Analyst	PBC	77249



NOTE 1: These staff may report to any of the above supervisors on a project and/or rotational basis based on changing institutional priorities and requirements and shifting work assignments. (Except Tel Op II, Posn 12859 will continue to report to Tel Op III, Posn 00781)

CHART UPDATED
DATE JUL 01 2004

SUPERSEDED
Date NOV 18 2004

*positions to be redescribed

STATE OF HAWAII
UNIVERSITY OF HAWAII
SYSTEMWIDE ADMINISTRATION
VICE PRESIDENT FOR ADMINISTRATION AND
CHIEF FINANCIAL OFFICER
COMMUNITY COLLEGES ADMINISTRATIVE AFFAIRS
ORGANIZATIONAL CHART (A)

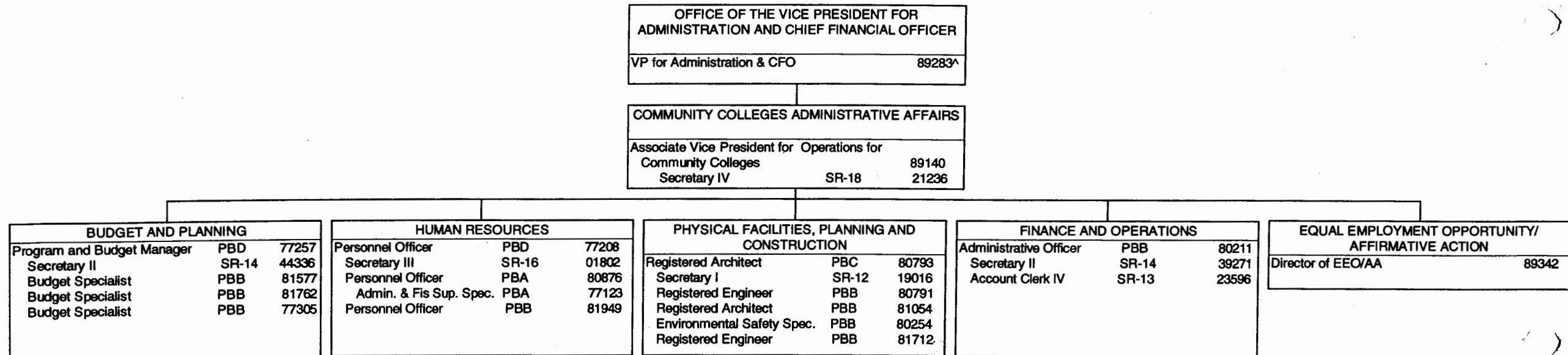


CHART UPDATED
JUL 01 2004
DATE _____

SUPERSEDED
Date NOV 18 2004

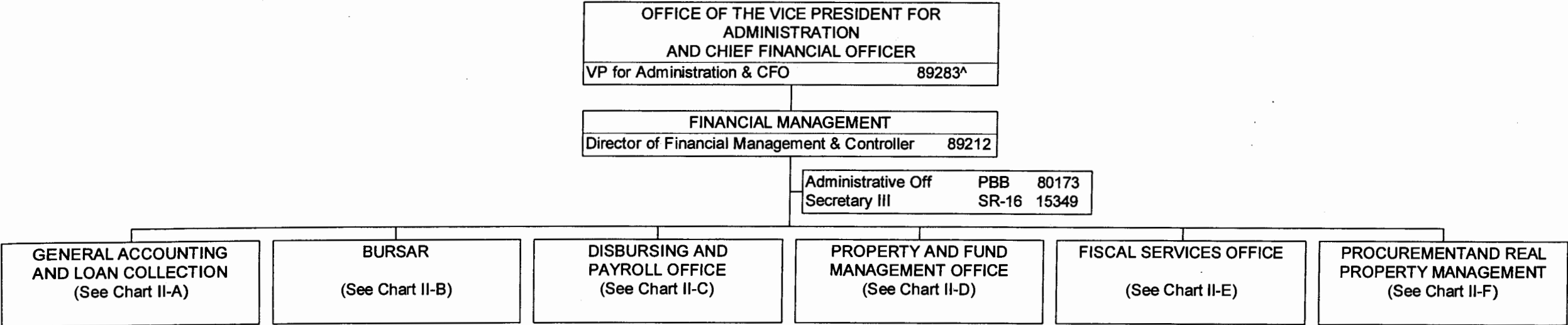
NOTE: All positions in Community Colleges Administrative Affairs to be redescribed.

^ Excluded from position count, this chart

General Fund Perm
22.00

STATE OF HAWAII
UNIVERSITY OF HAWAII
SYSTEMWIDE ADMINISTRATION
VICE PRESIDENT FOR ADMINISTRATION
AND CHIEF FINANCIAL OFFICER
FINANCIAL MANAGEMENT
POSITION ORGANIZATION CHART

CHART II



SUPERSEDED
Date NOV 18 2004

CHART UPDATED
JUL 01 2004
DATE _____

^ Excluded from position count, this chart

STATE OF HAWAII
 UNIVERSITY OF HAWAII
 SYSTEMWIDE ADMINISTRATION
 VICE PRESIDENT FOR ADMINISTRATION AND
 CHIEF FINANCIAL OFFICER
 OFFICE OF HUMAN RESOURCES
 POSITION ORGANIZATION CHART

CHART III

OFFICE OF THE VICE PRESIDENT FOR ADMINISTRATION AND CHIEF FINANCIAL OFFICER	
VP for Administration & CFO	89283^

OFFICE OF HUMAN RESOURCES		
Director of Coll. Barg. and Affiliated Faculty Affairs		#89425
System Director of Human Resources		#89053*
Secretary III	SR-16	#15286

CHART UPDATED
 DATE JUL 01 2004

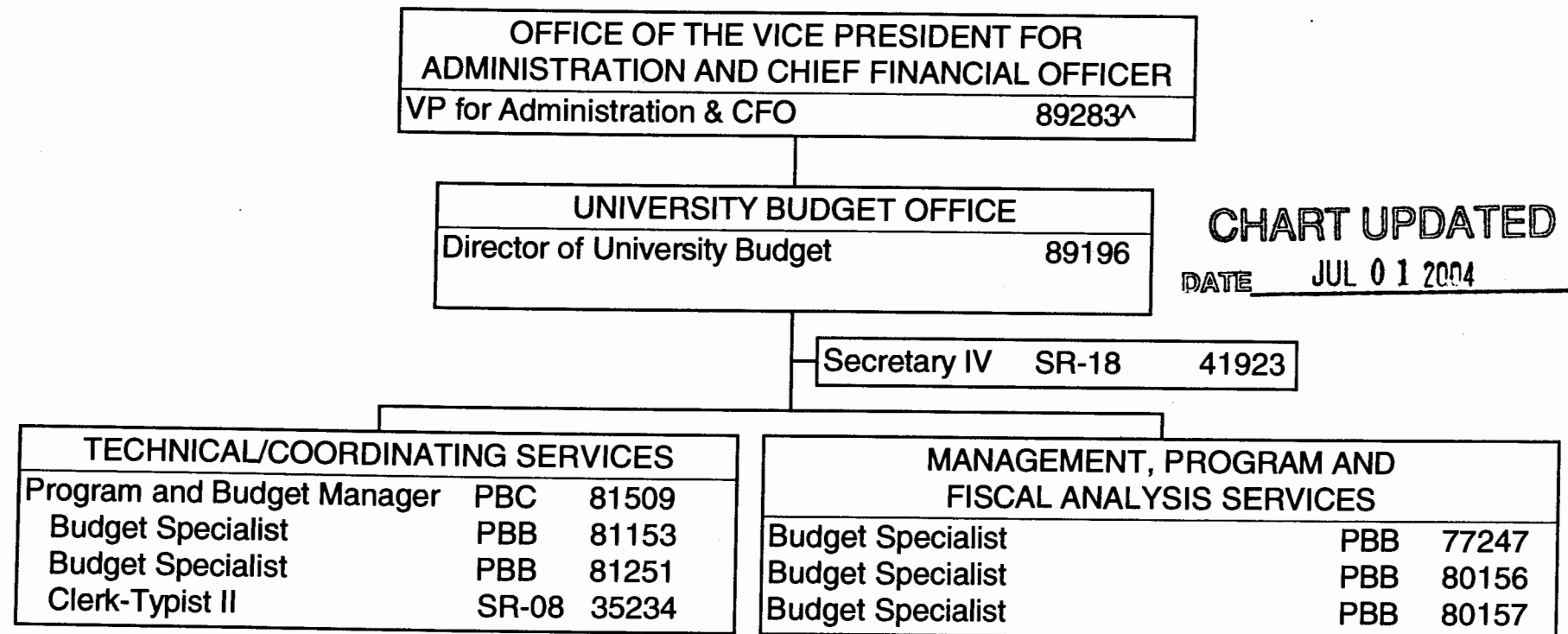
Personnel Officer	PBD	#80518	Personnel Tech VII	SR-17	#03395
Personnel Officer	PBC	#80540, 80092, 77206	Personnel Clerk V	SR-14	#12894, 42423 12260, 45682
Personnel Officer	PBB	#80094, 81323, 80538, 81834, 81866, 81322, 80179, 80093	Personnel Clerk V	SR-13	#33088
			Personnel Tech VI	SR-15	#43098
Admin & Fiscal Sup Sp	PBA	#81255, 81419			
IT Specialist	PBB	#77028, 80394			

SUPERSEDED
 Date NOV 18 2004

^ Excluded from position count, this chart
 * To be redescribed

STATE OF HAWAII
UNIVERSITY OF HAWAII
SYSTEMWIDE ADMINISTRATION
VICE PRESIDENT FOR ADMINISTRATION
AND CHIEF FINANCIAL OFFICER
UNIVERSITY BUDGET OFFICE
POSITION ORGANIZATION CHART

CHART IV



SUPERSEDED
Date NOV 18 2004

General Fund Perm
9.00

^ Excluded from position count, this chart