

STATE OF HAWAII  
UNIVERSITY OF HAWAII  
SYSTEMWIDE ADMINISTRATION  
OFFICE OF THE VICE PRESIDENT FOR  
INTERNATIONAL EDUCATION  
ORGANIZATIONAL CHART

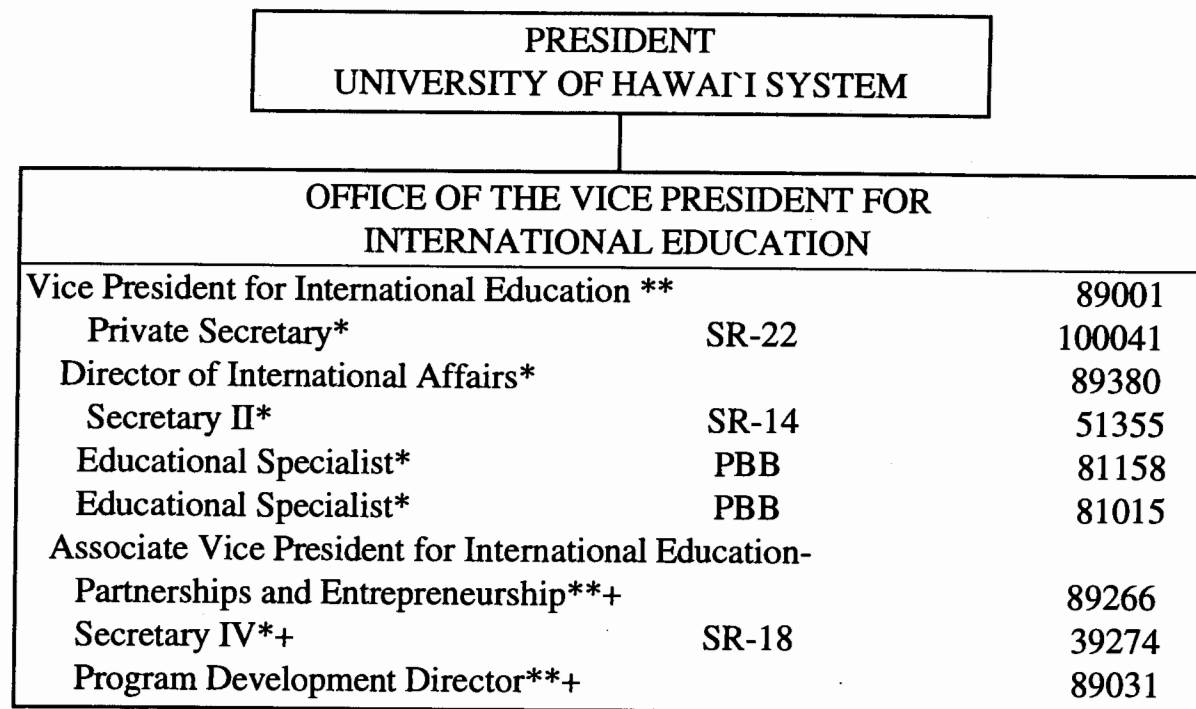


CHART UPDATED  
DATE JUL 01 2004

SUPERSEDED  
Date NOV 18 2004

- \* To be redescribed
- \*\* Proposed position classification
- + Temporary assignment from Office of the Chancellor  
for Community Colleges

General Fund Perm  
9.00