

STATE OF HAWAII
UNIVERSITY OF HAWAII
UNIVERSITY OF HAWAII AT HILO
ADMINISTRATIVE AFFAIRS
POSITION ORGANIZATION CHART
CHART VII

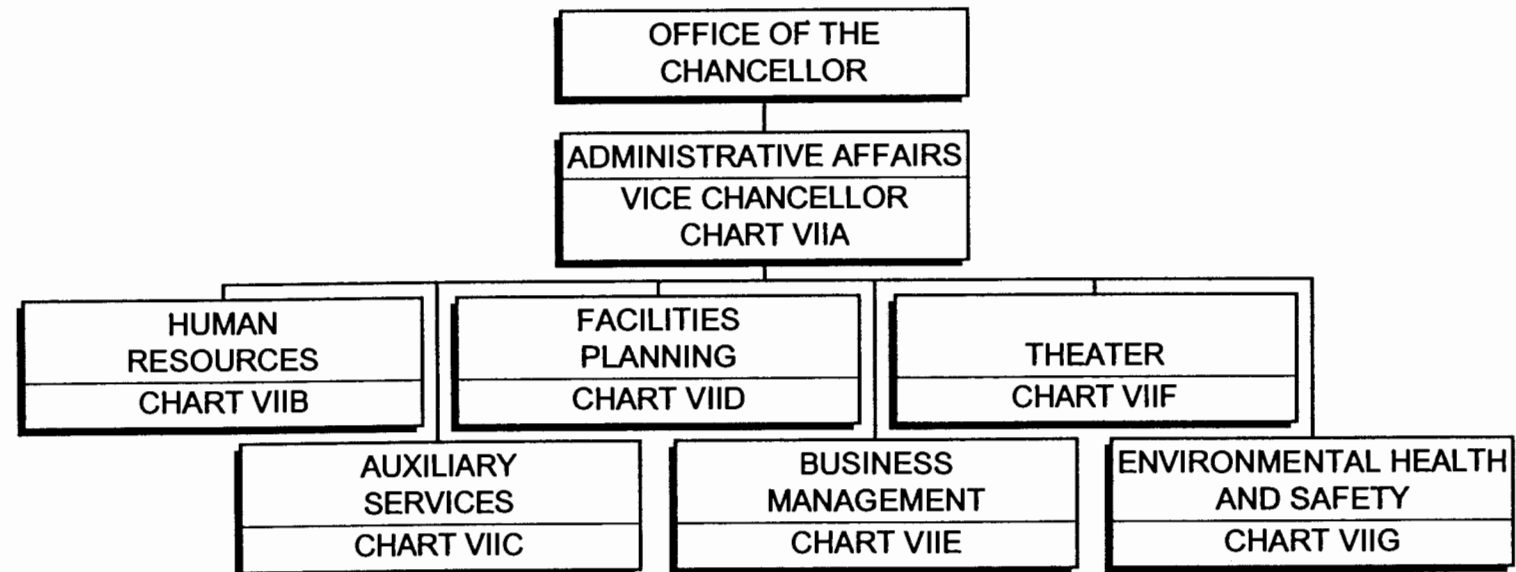


CHART UPDATED
JUL 01 2004
DATE _____

STATE OF HAWAII
UNIVERSITY OF HAWAII
UNIVERSITY OF HAWAII AT HILO
ADMINISTRATIVE AFFAIRS
VICE CHANCELLOR'S OFFICE
POSITION ORGANIZATION CHART
CHART VIIA

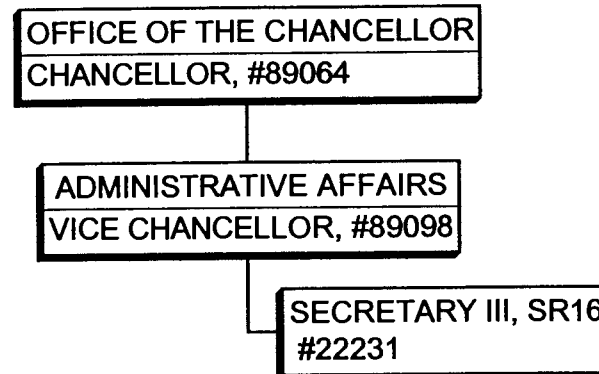


CHART UPDATED
DATE JUL 01 2004

STATE OF HAWAII
UNIVERSITY OF HAWAII
UNIVERSITY OF HAWAII AT HILO
ADMINISTRATIVE AFFAIRS
HUMAN RESOURCES
POSITION ORGANIZATION CHART
CHART VIIB

ADMINISTRATIVE AFFAIRS
VICE CHANCELLOR, #89098

HUMAN RESOURCES
PERSONNEL OFFICER, PBB, #80461 PERSONNEL CLERK V, SR13, #11633 PERSONNEL CLERK IV, SR 11 #41015 PERSONNEL CLERK IV, SR11, #44262

CHART UPDATED
DATE JUL 01 2004

POSITIONS

GENERAL FUND - 4.00

HUMAN RESOURCES.OPX

STATE OF HAWAII
UNIVERSITY OF HAWAII
UNIVERSITY OF HAWAII AT HILO
ADMINISTRATIVE AFFAIRS
AUXILIARY SERVICES
POSITION ORGANIZATION CHART
CHART VIIC

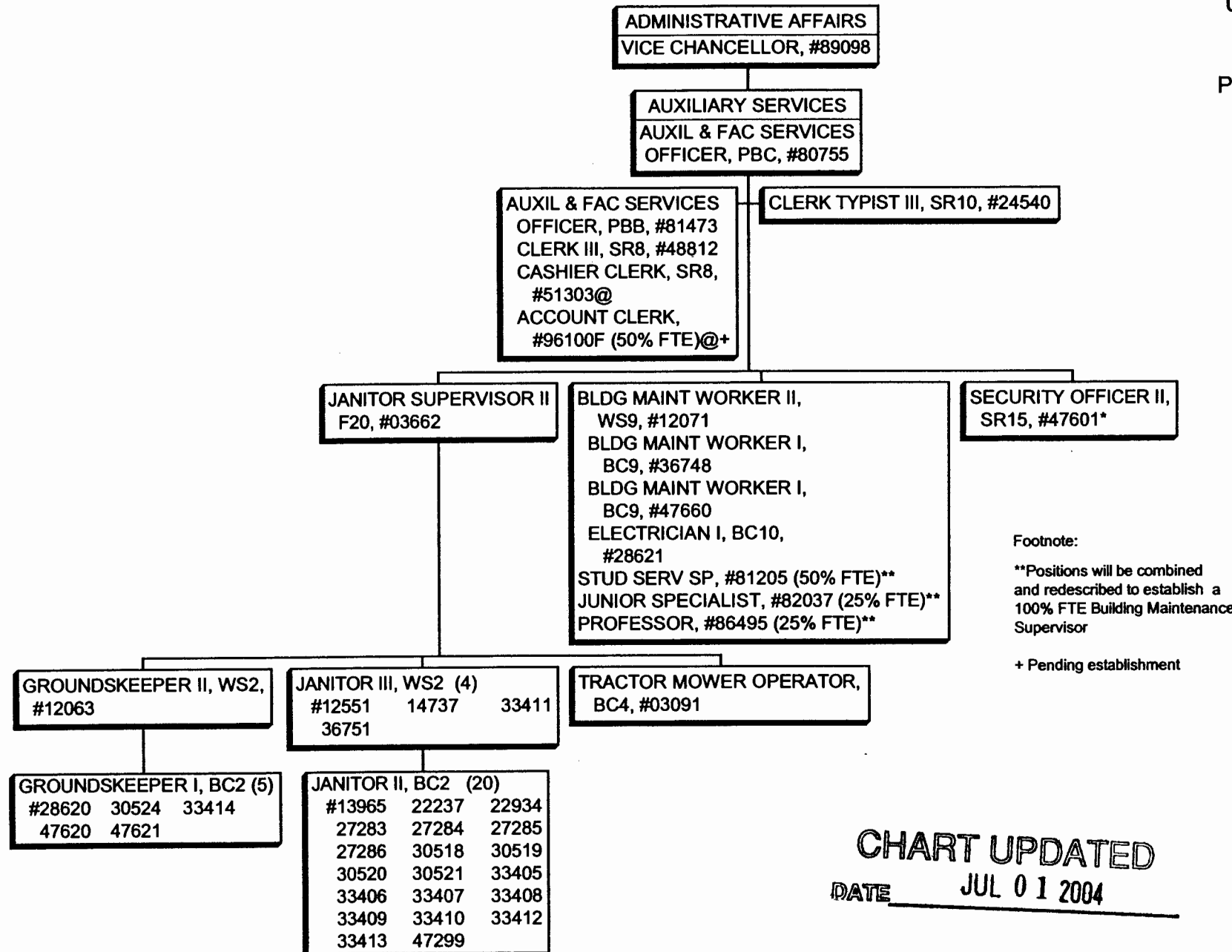


CHART UPDATED
DATE JUL 01 2004

POSITIONS

GENERAL FUND - 41.00
TEMPORARY GENERAL FUND - 1.00*
REVOLVING FUND - 1.50@

STATE OF HAWAII
UNIVERSITY OF HAWAII
UNIVERSITY OF HAWAII AT HILO
ADMINISTRATIVE AFFAIRS
FACILITIES PLANNING
POSITION ORGANIZATION CHART
CHART VIID

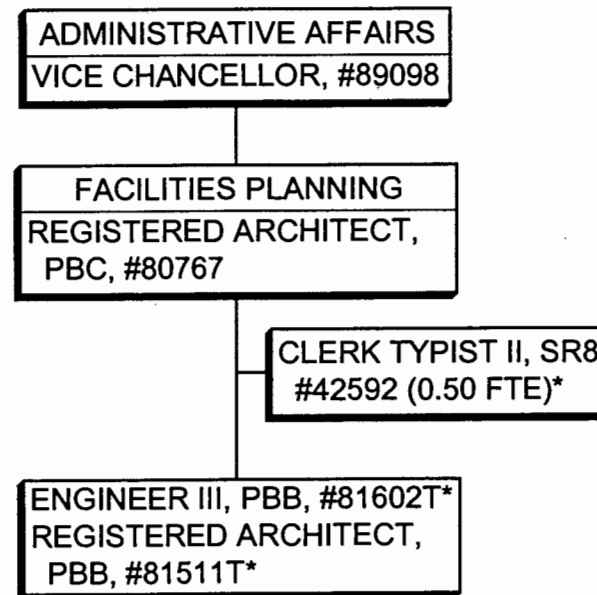


CHART UPDATED
DATE JUL 01 2004

POSITIONS

GENERAL FUND - 1.00
TEMPORARY GENERAL FUND - 2.50*

STATE OF HAWAII
UNIVERSITY OF HAWAII
UNIVERSITY OF HAWAII AT HILO
ADMINISTRATIVE AFFAIRS
BUSINESS MANAGEMENT
POSITION ORGANIZATION CHART
CHART VIIIE

ADMINISTRATIVE AFFAIRS
VICE CHANCELLOR, #89098

BUSINESS MANAGEMENT
ADMINISTRATIVE OFFICER,
PBB, #81424

CLERK STENO II, SR9,
#45477

ADMINISTRATIVE OFFICER,
PBA, #81456
ADMINISTRATIVE OFFICER,
PBA, #80152
PURCHASING TECH II,
SR13, #13529
ACCOUNT CLERK IV, SR13
#21216
CLERK IV, SR10, #24539
CLERK III, SR8, #47313
CLERK IV, SR10, #50082*
CASHIER I, SR10, #50083*
CLERK IV, SR10, #50084*
ACCOUNT CLERK II,
SR8, #51310*
ACCOUNT CLERK II,
SR8, #51312*

CHART UPDATED
DATE JUL 01 2004

POSITIONS

GENERAL FUND - 8.00

TEMPORARY GENERAL FUND - 5.00*

STATE OF HAWAII
UNIVERISTY OF HAWAII
UNIVERSITY OF HAWAII AT HILO
ADMININSTRATIVE AFFAIRS
THEATER
POSITION ORGANIZATION CHART
CHART VIIF

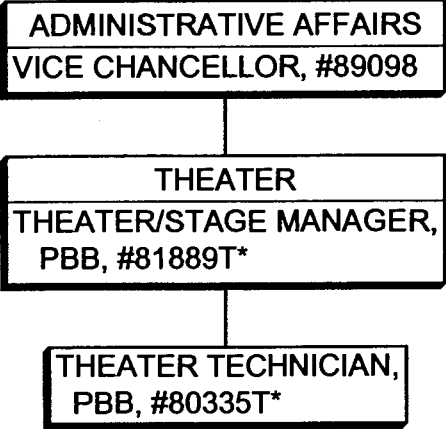


CHART UPDATED
JUL 01 2004
DATE _____

STATE OF HAWAII
UNIVERSITY OF HAWAII
UNIVERSITY OF HAWAII AT HILO
ADMINISTRATIVE AFFAIRS
ENVIRONMENTAL HEALTH
AND SAFETY
POSITION ORGANIZATION CHART
CHART VIIG

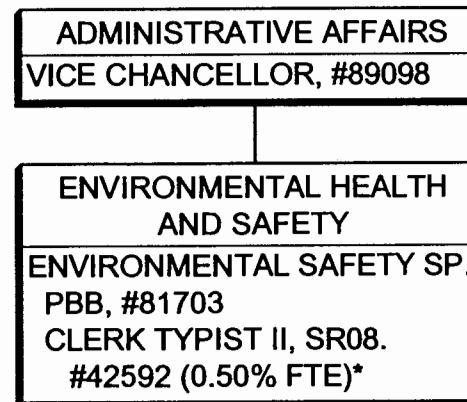


CHART UPDATED

DATE JUL 01 2004

POSITIONS

GENERAL FUND - 1.00

TEMPORARY GENERAL FUND - 0.50*