

STATE OF HAWAII
UNIVERSITY OF HAWAII
UNIVERSITY OF HAWAII AT MĀNOA
VICE CHANCELLOR FOR
ADMINISTRATION, FINANCE AND OPERATIONS
CAMPUS SERVICES
AUXILIARY ENTERPRISES
PROPOSED
ORGANIZATION CHART
CHART V-C-a
Proposed General Fund: 2.00

APPROVED BY THE UNIVERSITY
BOARD OF REGENTS

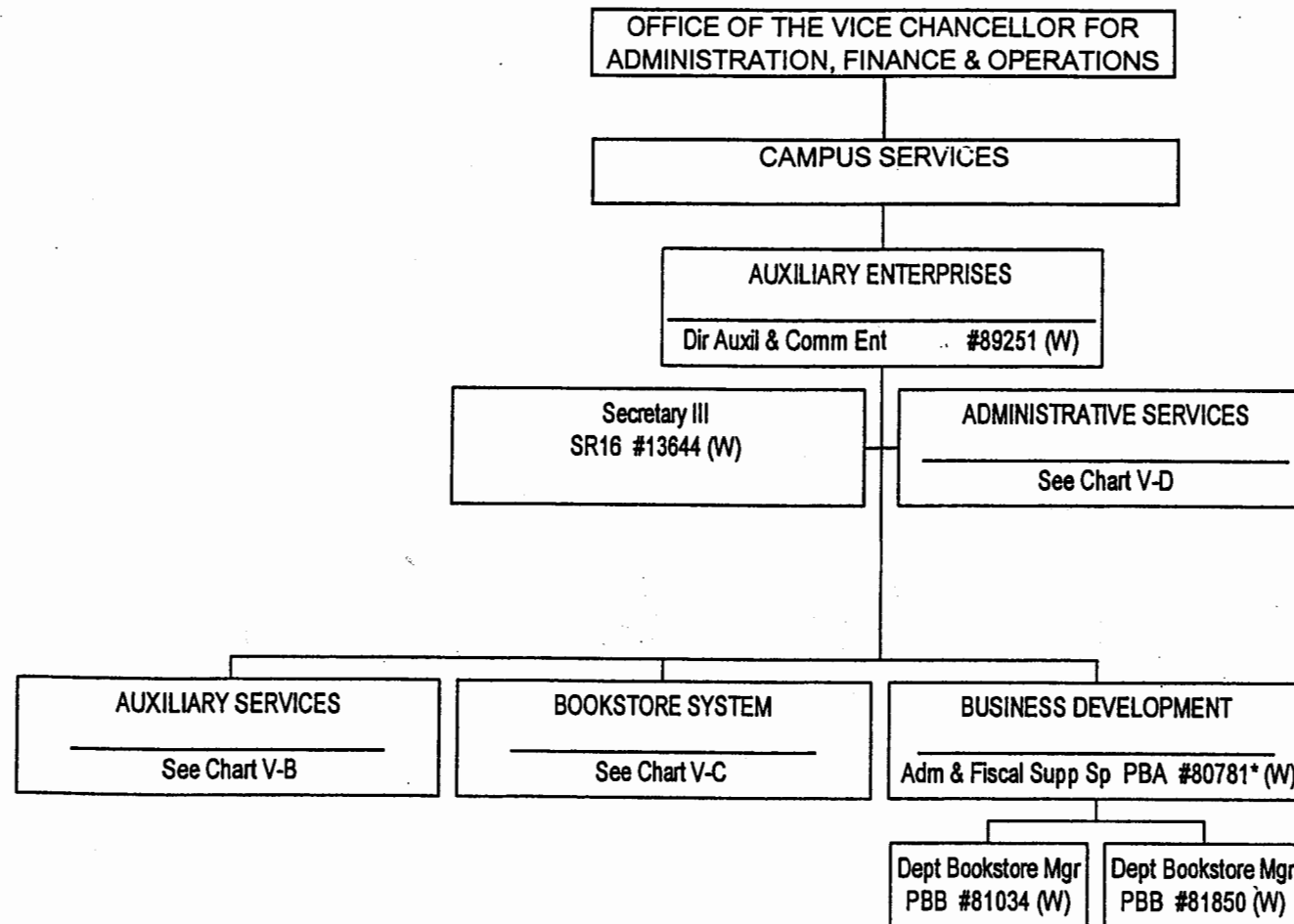
FEB 17 2005

Date

1/ no change proposed

2/ Campus Security transferred to proposed Office of Safety and Security

STATE OF HAWAII
 UNIVERSITY OF HAWAII
 UNIVERSITY OF HAWAII AT MĀNOA
 OFFICE OF THE CHANCELLOR
 OFFICE OF THE VICE CHANCELLOR FOR
 FOR ADMINISTRATION, FINANCE AND OPERATIONS
 CAMPUS SERVICES
 AUXILIARY ENTERPRISES
 CHART V-A



Revolving = 5.00
 *To be redescribed

FEB 17 2005

STATE OF HAWAII
UNIVERSITY OF HAWAII
OFFICE OF THE CHANCELLOR, UH MANOA
AUXILIARY ENTERPRISES
AUXILIARY SERVICES
CHART V-B

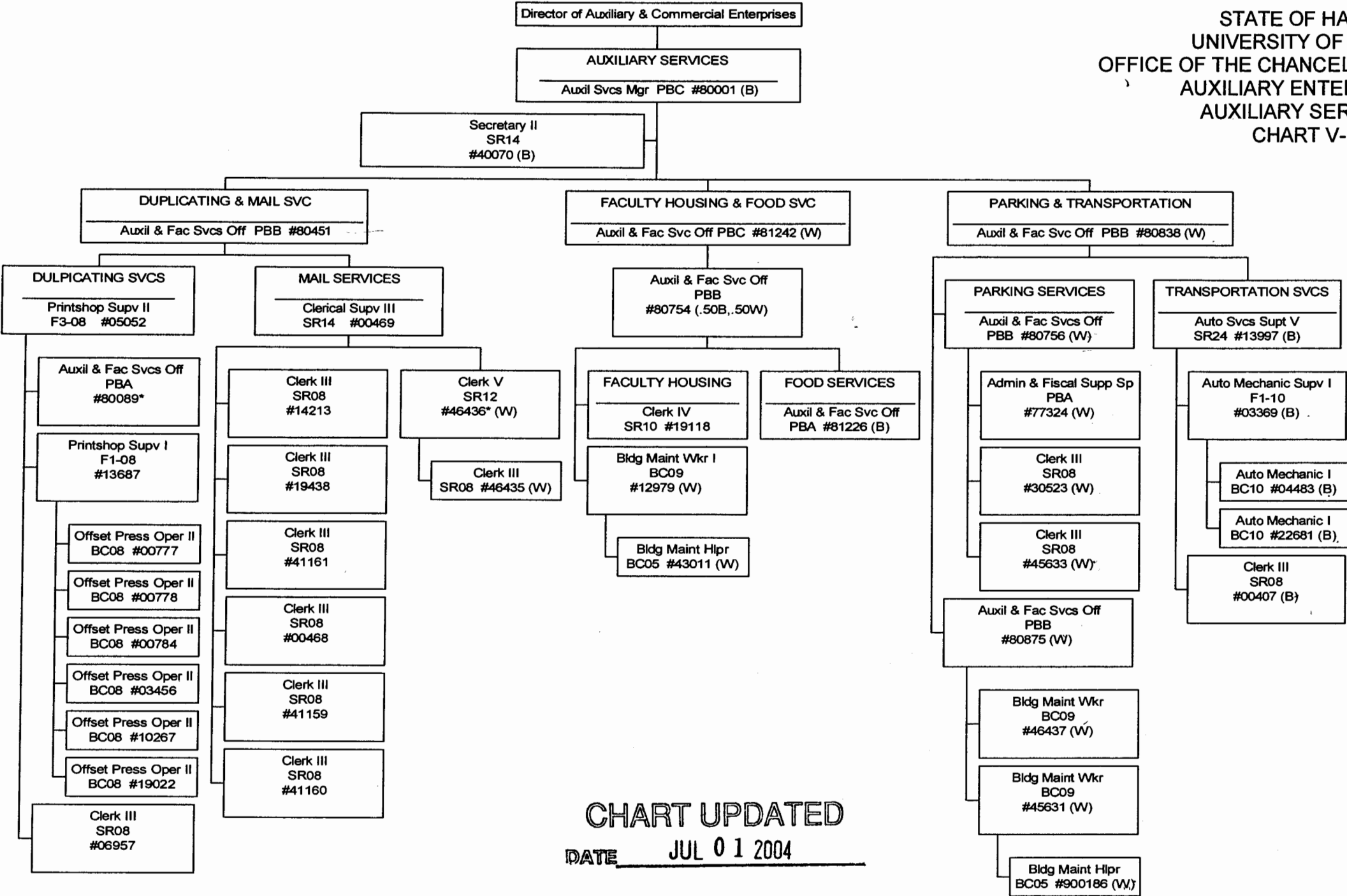


CHART UPDATED
DATE JUL 01 2004

STATE OF HAWAII
UNIVERSITY OF HAWAII
OFFICE OF THE CHANCELLOR, UH MANOA
AUXILIARY ENTERPRISES
BOOKSTORE SYSTEM
CHART V-C

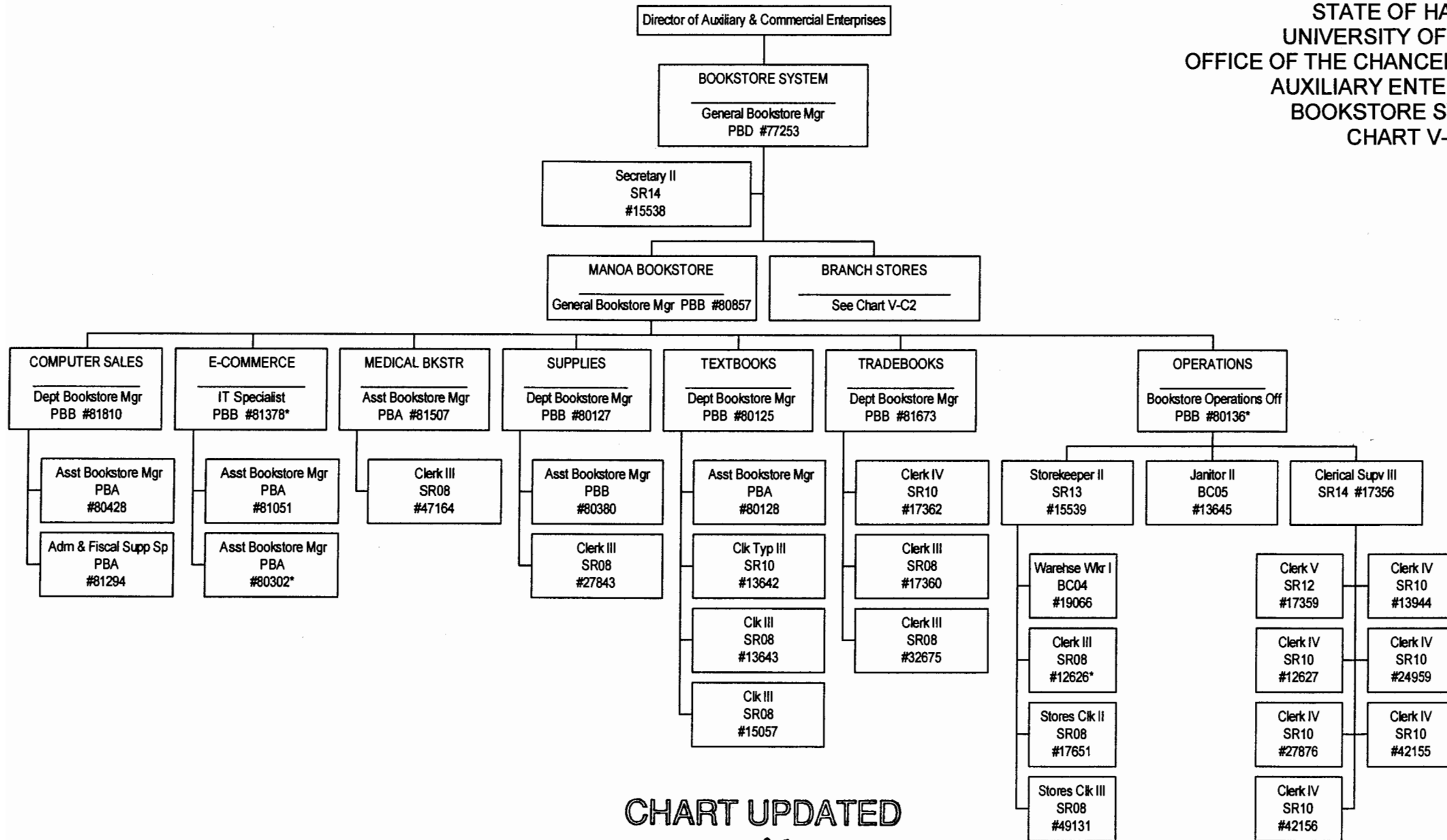
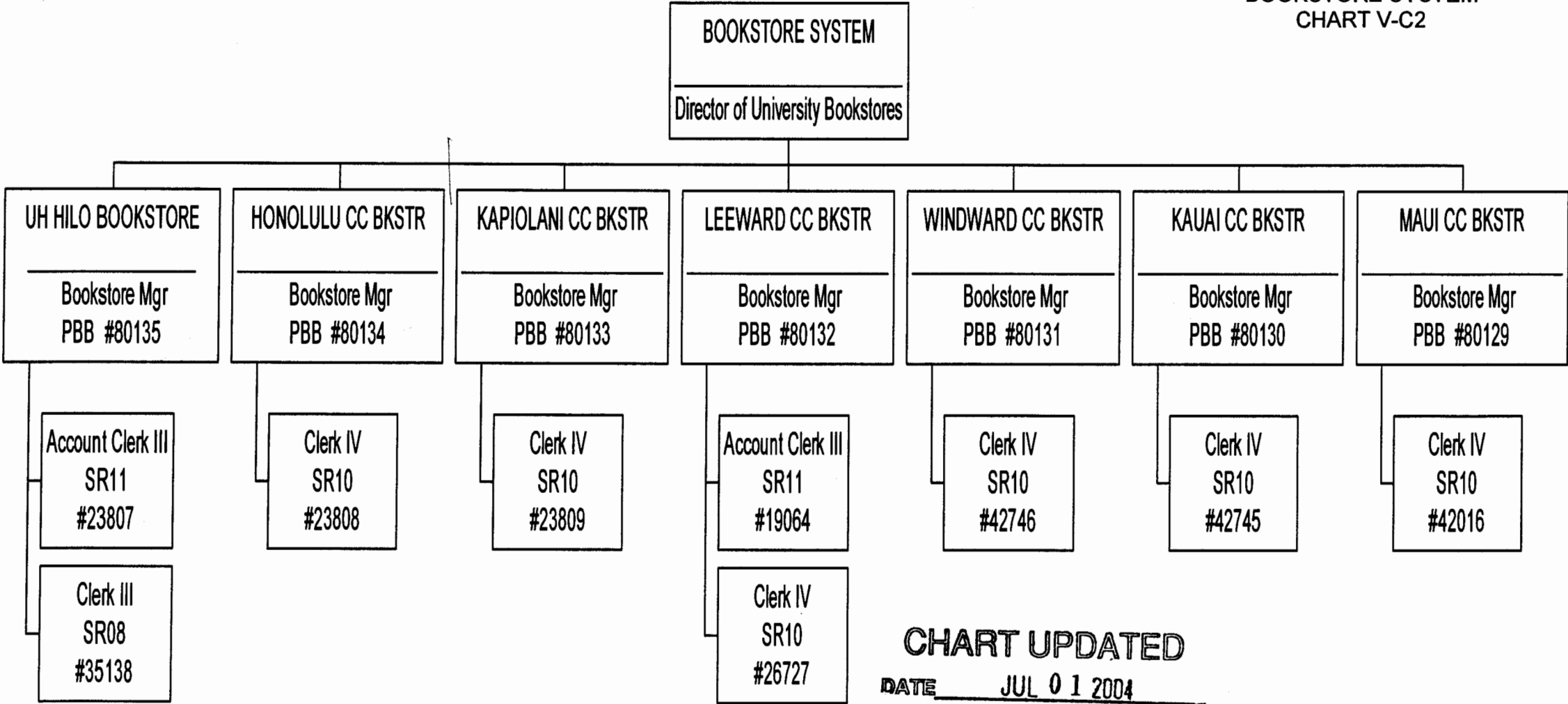


CHART UPDATED
DATE JUL 01 2004

STATE OF HAWAII
UNIVERSITY OF HAWAII
OFFICE OF THE CHANCELLOR, UH MANOA
AUXILIARY ENTERPRISES
BOOKSTORE SYSTEM
CHART V-C2



STATE OF HAWAII
UNIVERSITY OF HAWAII
OFFICE OF THE CHANCELLOR, UH MANOA
AUXILIARY ENTERPRISES
ADMINISTRATIVE SERVICES
CHART V-D

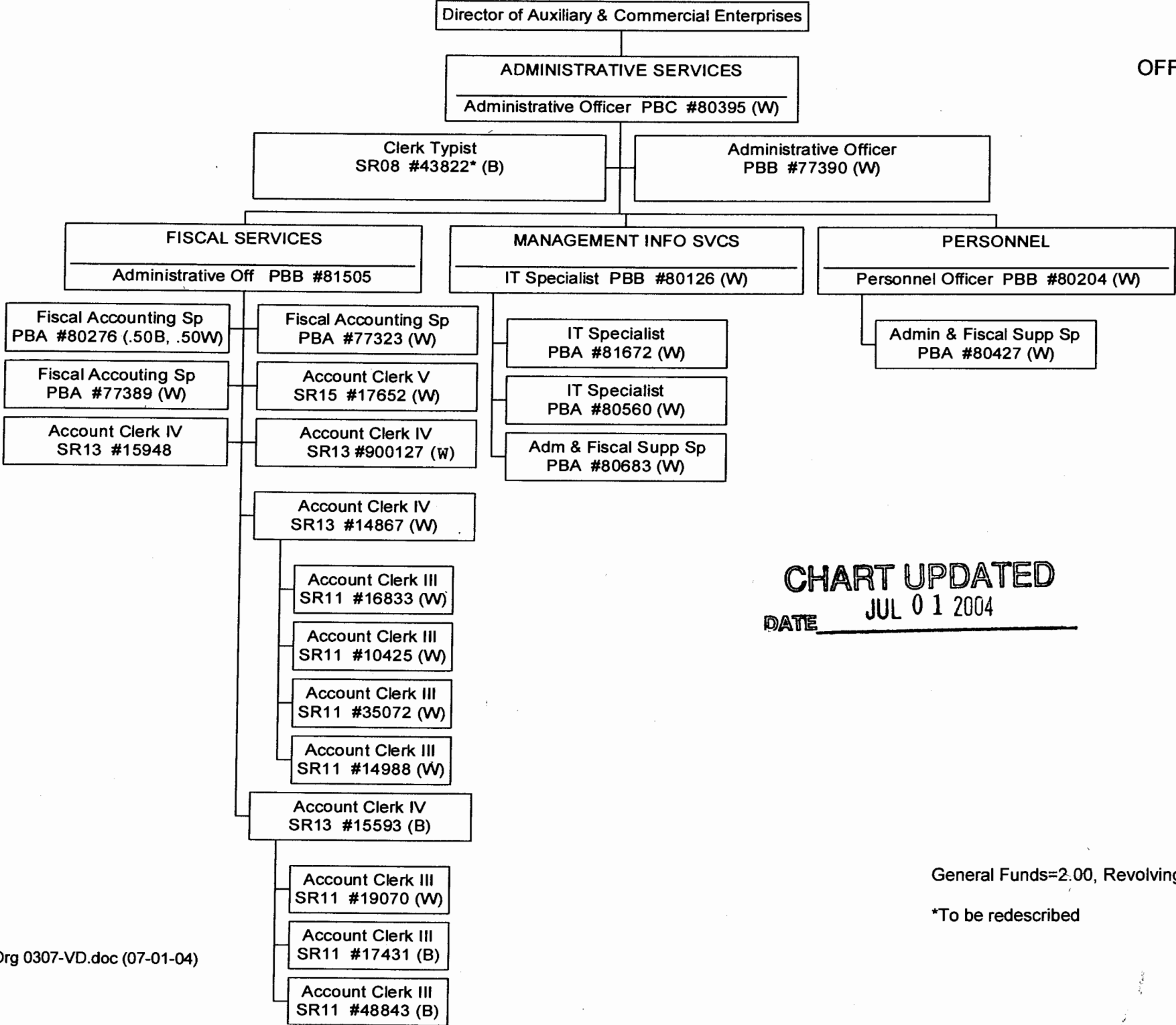


CHART UPDATED
JUL 01 2004
DATE _____

General Funds=2.00, Revolving Funds (W)=18.50, Special Funds (B)=4.50

*To be redescribed

STATE OF HAWAII
UNIVERSITY OF HAWAII
OFFICE OF THE CHANCELLOR, UH MĀNOA
AUXILIARY ENTERPRISES
CHART V

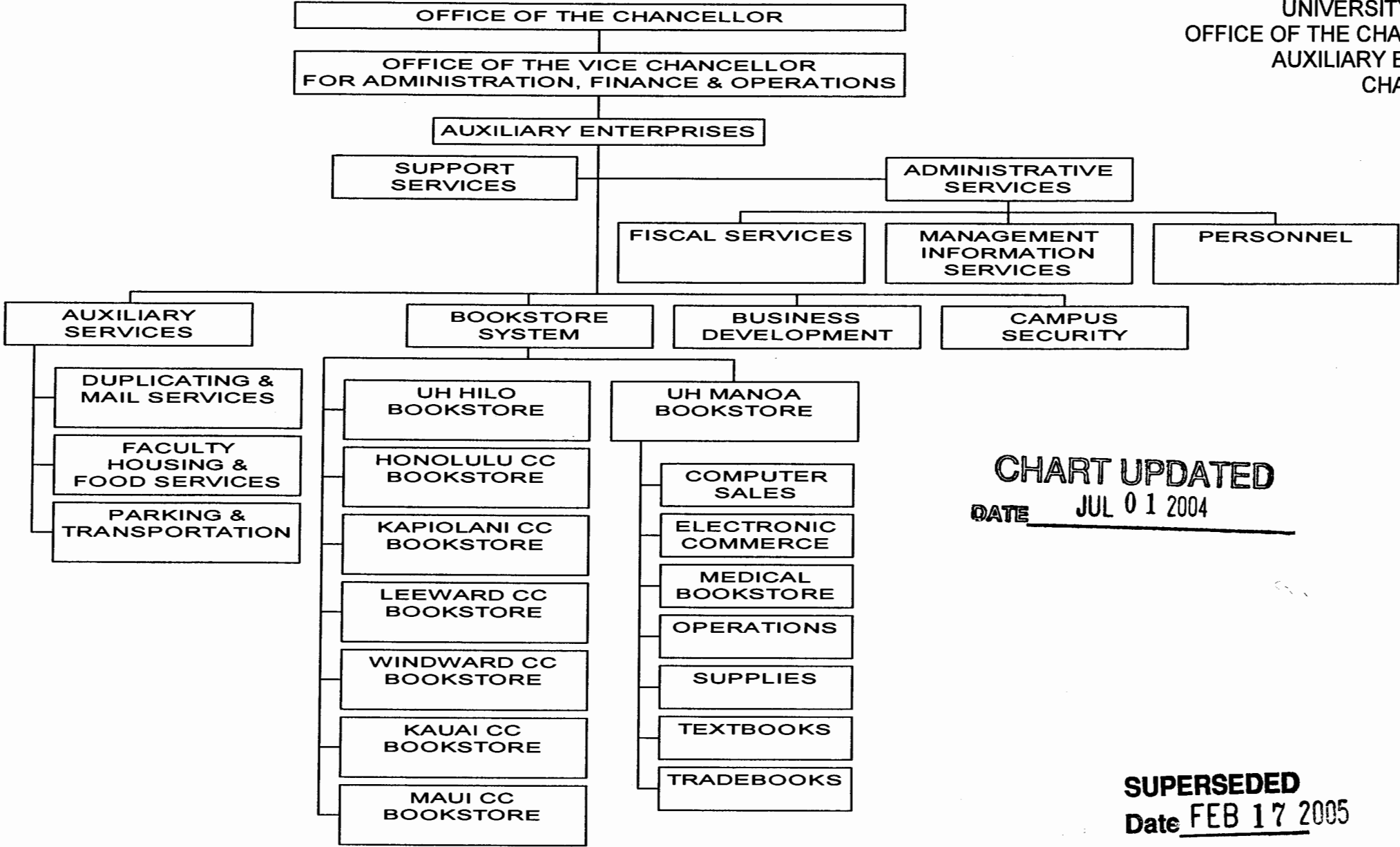


CHART UPDATED
DATE JUL 01 2004

SUPERSEDED
Date FEB 17 2005

STATE OF HAWAII
UNIVERSITY OF HAWAII
OFFICE OF THE CHANCELLOR, UH MĀNOA
AUXILIARY ENTERPRISES
CHART V-A

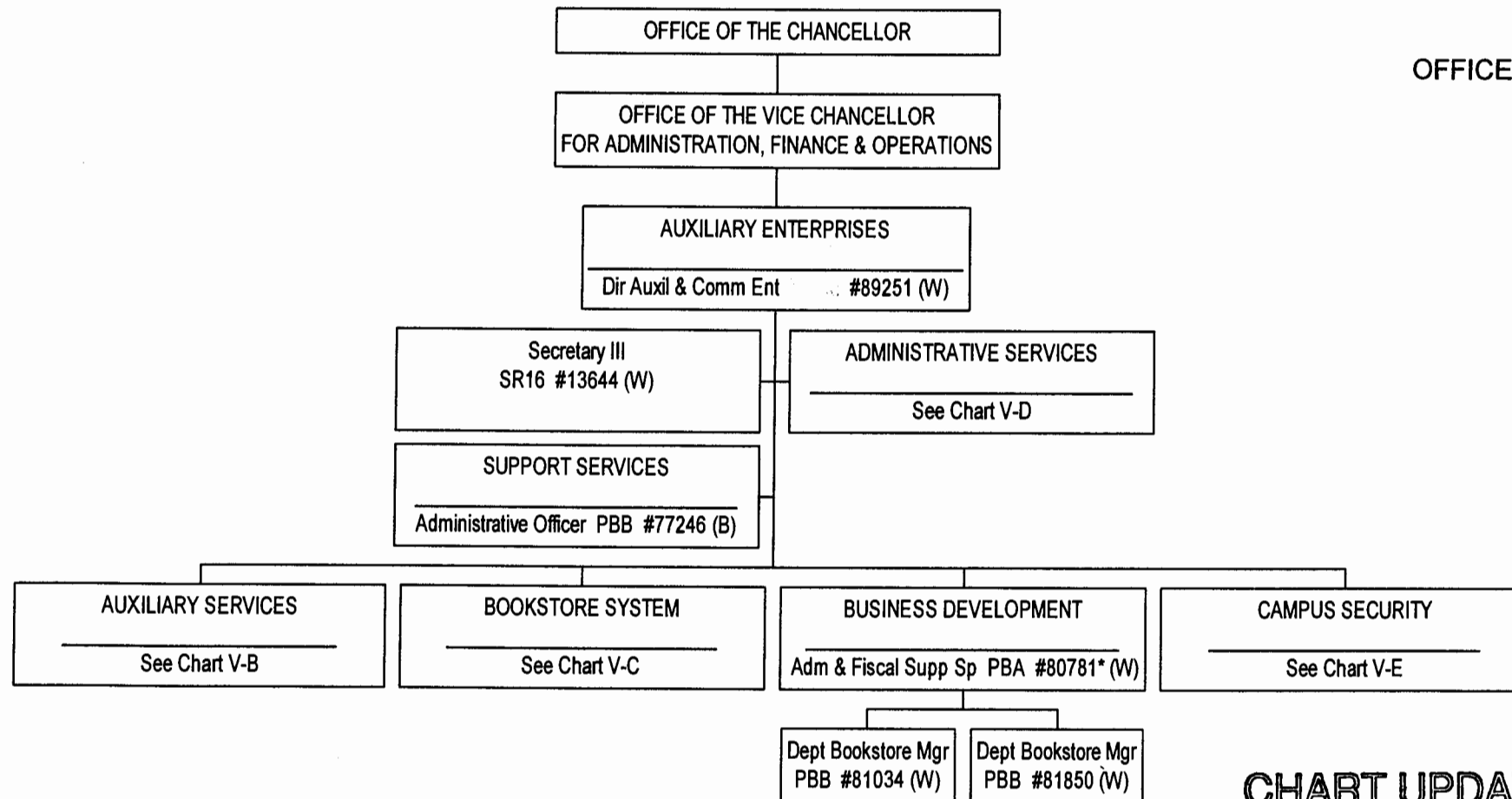


CHART UPDATED
DATE JUL 01 2004

SUPERSEDED
Date FEB 17 2005

Revolving = 5.00, Special = 1.00
*To be redescribed

STATE OF HAWAII
UNIVERSITY OF HAWAII
OFFICE OF THE CHANCELLOR, UH MANOA
AUXILIARY ENTERPRISES
CAMPUS SECURITY
CHART V-E

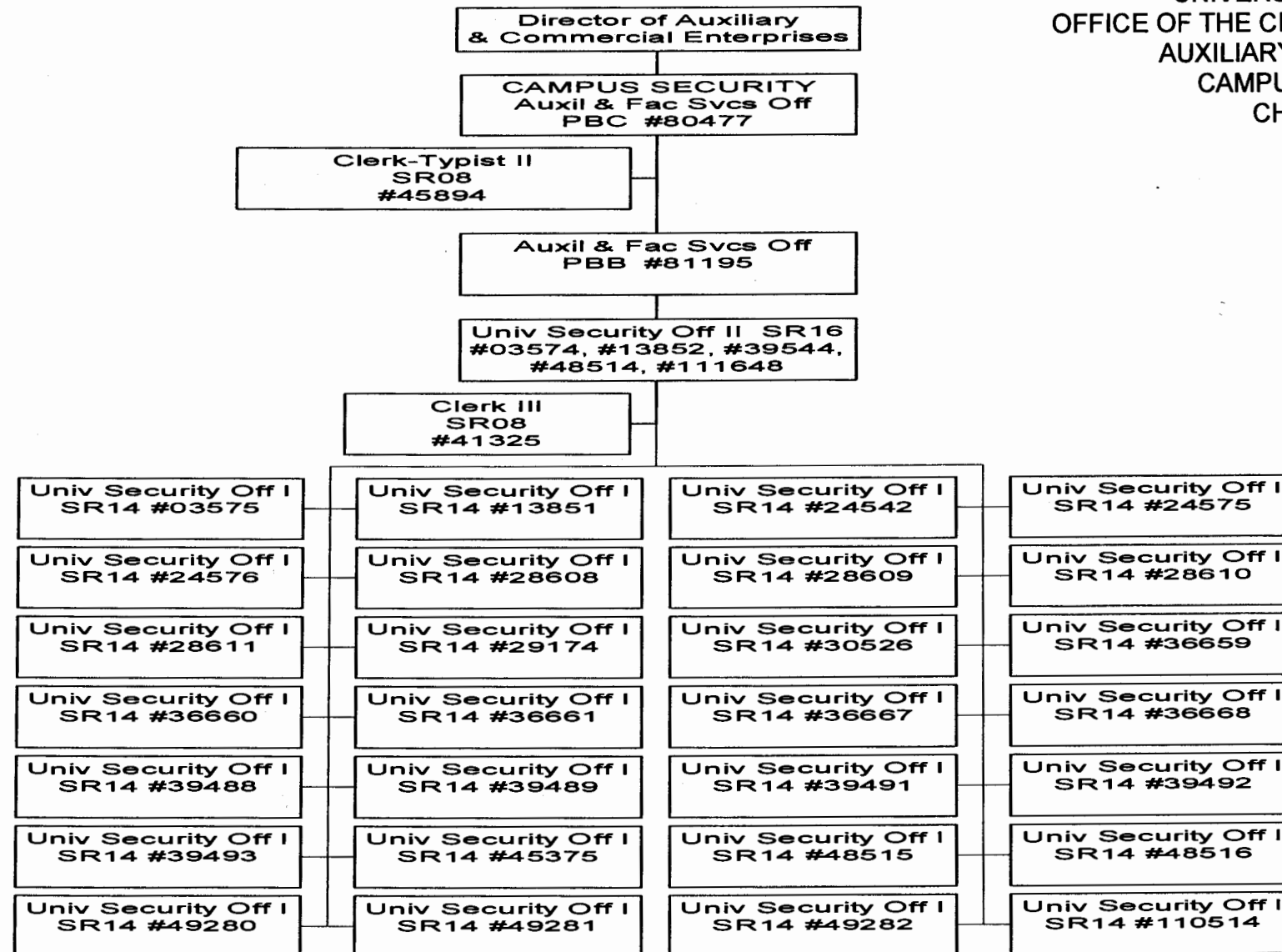


CHART UPDATED

DATE JUL 01 2004

General Funds = 37.00

SUPERSEDED
Date FEB 17 2005

STATE OF HAWAII
 UNIVERSITY OF HAWAII
 UNIVERSITY OF HAWAII AT MĀNOA
 OFFICE OF THE CHANCELLOR
 OFFICE OF THE VICE CHANCELLOR FOR
 FOR ADMINISTRATION, FINANCE AND OPERATIONS
 CAMPUS SERVICES
 AUXILIARY ENTERPRISES
 CHART V-A

