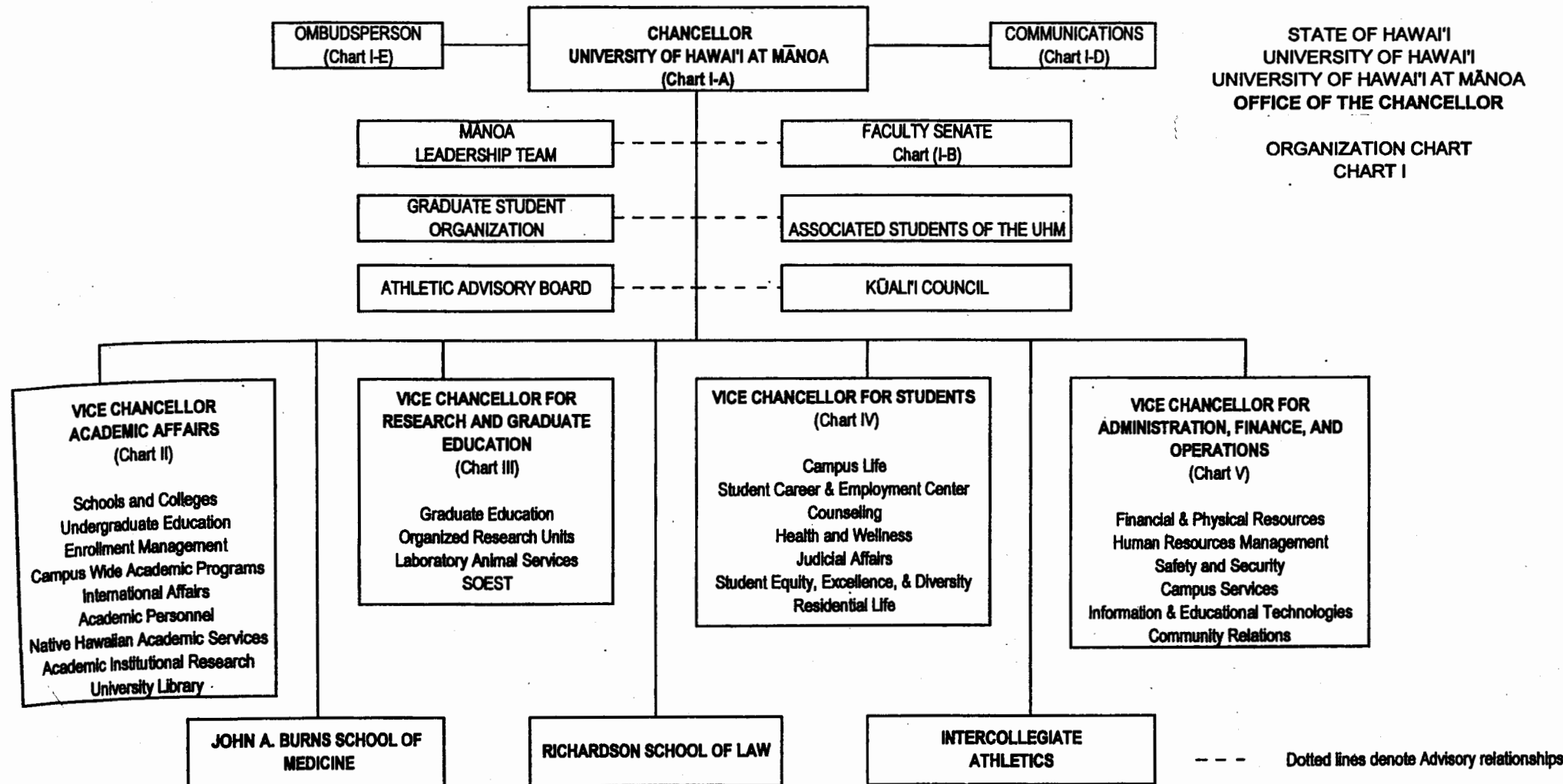


APPROVED BY THE UNIVERSITY  
BOARD OF REGENTS  
FEB 17 2005

Date



OFFICE OF THE CHANCELLOR UNIVERSITY OF HAWAII AT MĀNOA
Chancellor, #89261 Private Sec II SR-22, #100053 Administrative Assistant, #89365 Sec I SR-12, #15584 Institutional Support Specialist* Executive Assistant, #89117 Sec II SR-14, #15646 Special Advisor for Hawaiian Affairs* Faculty Athletic Representative* (.50)

STATE OF HAWAII  
UNIVERSITY OF HAWAII  
UNIVERSITY OF HAWAII AT MĀNOA  
OFFICE OF THE CHANCELLOR  
PROPOSED  
ORGANIZATION CHART  
CHART I-A

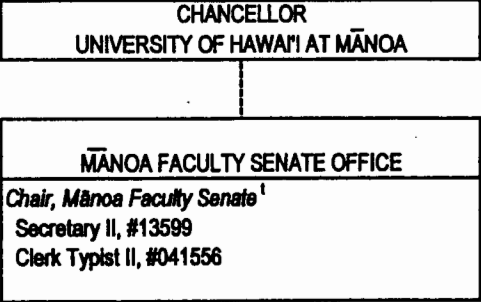
GENERAL FUND FTE: 8.50

\* New, position number to be determined

\*\* New, position number subject to classification

APPROVED BY THE UNIVERSITY  
BOARD OF REGENTS  
FEB 17 2005

\_\_\_\_\_  
Date



STATE OF HAWAII  
UNIVERSITY OF HAWAII  
OFFICE OF THE CHANCELLOR  
UNIVERSITY OF HAWAII AT MĀNOA  
MĀNOA FACULTY SENATE OFFICE  
PROPOSED  
ORGANIZATION CHART  
CHART I-B

GENERAL FUNDS FTE: 2.00

<sup>1</sup> Position annually elected by the Mānoa Faculty Senate

APPROVED BY THE UNIVERSITY  
BOARD OF REGENTS  
FEB 17 2005  
\_\_\_\_\_  
Date

STATE OF HAWAII  
UNIVERSITY OF HAWAII  
UNIVERSITY OF HAWAII AT MĀNOA  
OFFICE OF THE CHANCELLOR  
OFFICE OF COMMUNICATIONS  
PROPOSED  
ORGANIZATION CHART  
CHART I-C

CHANCELLOR UNIVERSITY OF HAWAII AT MĀNOA		
OFFICE OF COMMUNICATIONS		
Dir of Communications		89145
Secretary I	SR-12	*
Public Info Officer	PBB	*
Public Info Officer	PBB	*

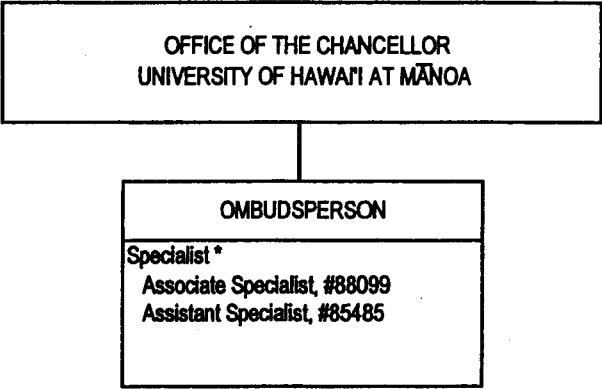
General Fund: 4.00

APPROVED BY THE UNIVERSITY  
BOARD OF REGENTS

FEB 17 2005

Date

\*new, position number to be determined



STATE OF HAWAII  
UNIVERSITY OF HAWAII  
UNIVERSITY OF HAWAII AT MĀNOA  
STATE OF HAWAII  
UNIVERSITY OF HAWAII  
UNIVERSITY OF HAWAII AT MĀNOA  
OFFICE OF THE CHANCELLOR  
OFFICE OF OMBUDSPERSON  
PROPOSED  
ORGANIZATION CHART  
CHART I-D

GENERAL FUNDS FTE: 3.00

\* New, position number to be determined

APPROVED BY THE UNIVERSITY  
BOARD OF REGENTS  
FEB 17 2005  
Date