

CHART UPDATED
JUL 01 2004
DATE _____

Approved

Edwin C. Cadman, M.D., Dean

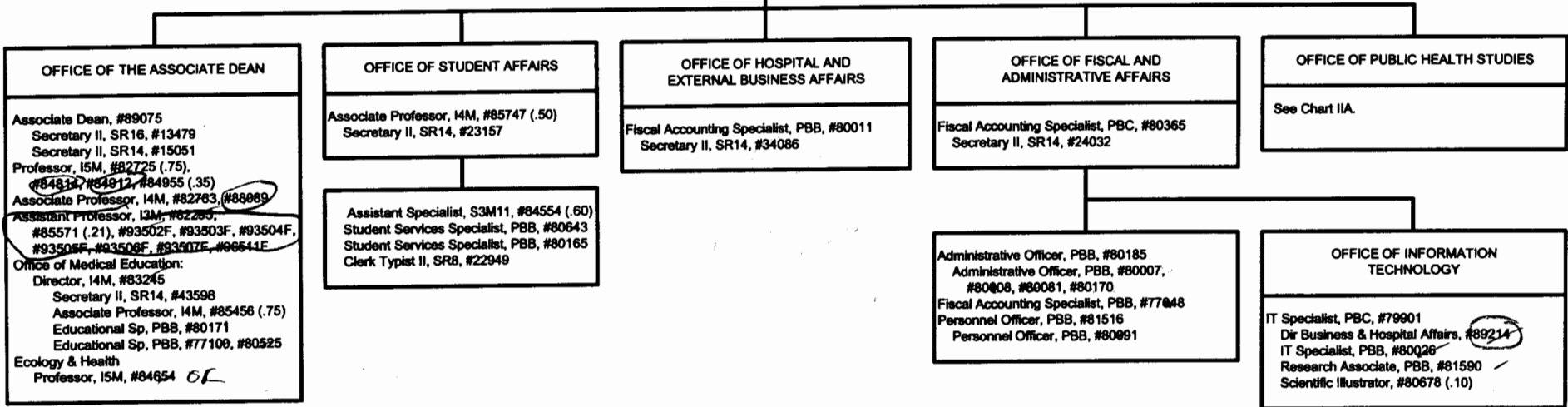
STATE OF HAWAII
UNIVERSITY OF HAWAII
UNIVERSITY OF HAWAII AT MANOA
SCHOOL OF MEDICINE

POSITION ORGANIZATION CHART
CHART II

OFFICE OF THE CHANCELLOR
UNIVERSITY OF HAWAII AT MANOA

SCHOOL OF MEDICINE

Dean, #89077-
Secretary III, SR18, #24033
Secretary II, SR14, #14290
Professor, ISM, #82858



Pending Establishment - Kakaako Facility
Clerk I, #95002F, #95003F
Generic C/S Title, #95004F
Environmental Sfty Spec, #95509F, #95510F
Generic E/M Title, #95511F
Information Technology, #95512F, #95513F, #95514F, #95515F, #95516F, #95517F, #95518F, #95519F, #95520F
Adm & Fiscal Support Sp, #95521F

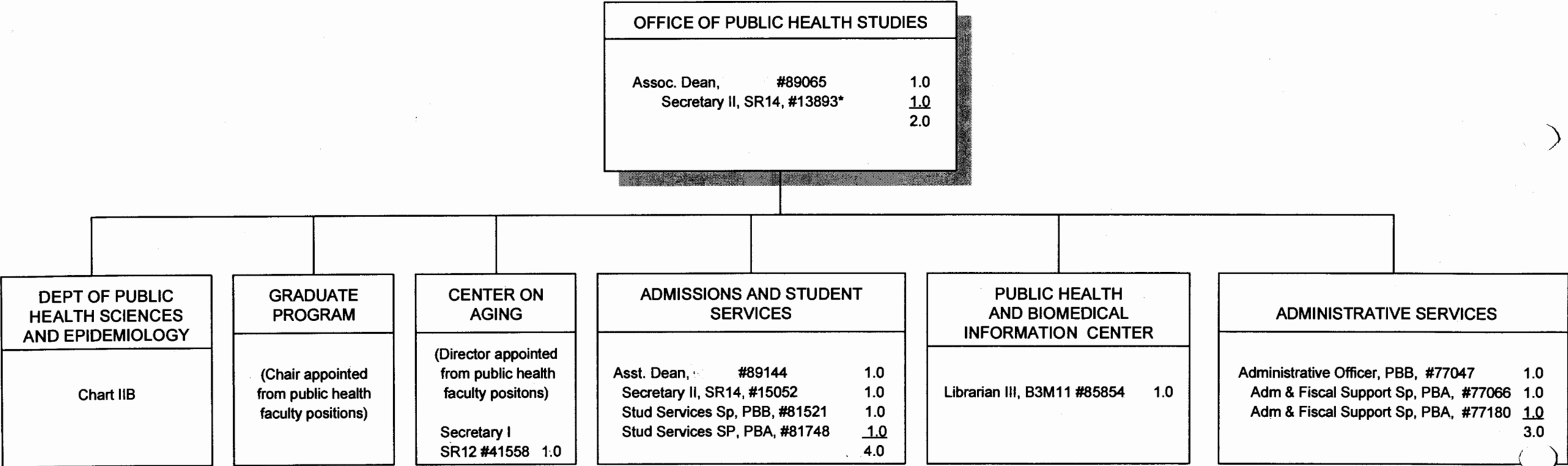
Pending Establishment - Health Science Library
Supervising Library Tech I, #95005F
Library Assistant II, #95006F, #95007F, #95008F
Library Technician V, #95009F, #95010F, #95011F, #95012F
Admin Director, #95522F
Admin Assistant, #95523F
Fiscal Officer, #95524F
Messenger, #95525F
Librarian IV, #95526F
Librarian II, #95527F, #95528F, #95529F
Library Technician, #95530F
Librarian III, #95531F
Head Tech Svcs, #95532F
Cataloger, #95538F

CHART UPDATED
JUL 01 2004
DATE _____

Approved

Edwin C. Cadman, M.D., Dean

CHART IIA



* Secretary II position #14290 transferred to JABSOM in exchange for Secretary II position #13893

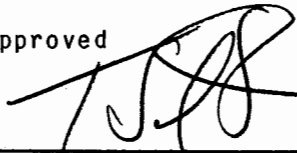
CHART UPDATED
JUL 01 2004
DATE _____

Approved _____
Edwin C. Cadman, M.D., Dean

Chart IIB

| OFFICE OF PUBLIC HEALTH STUDIES | |
|---|----------------|
| Associate Dean | |
| DEPARTMENT OF PUBLIC HEALTH SCIENCES AND EPIDEMIOLOGY | |
| Chair (appointed from faculty positons) | |
| Secretary II, SR-14, #34214 | 1.0 |
| Faculty Positions (Full Time) | 18.0 |
| I5MO9 - #82159 | I5MO9 - #84196 |
| I5MO9 - #82856 | I5MO9 - #82399 |
| I5MO9 - #85489 | I4MO9 - #84847 |
| I4MO9 - #84572 | I4MO9 - #84197 |
| I4MO9 - #83997 | I3MO9 - #85852 |
| #84013 * | #82806 ** |
| #83319 ** | #82080 ** |
| #82390 ** | #84313 ** |
| #83947 ** | #84268 ** |
| | 19.0 |

CHART UPDATED
DATE JUL 01 2004

Approved

Edwin C. Cadman, M.D., Dean

* Vacant, to be recruited FY05
** Vacant, no funding

STATE OF HAWAII
UNIVERSITY OF HAWAII
UNIVERSITY OF HAWAII AT MANOA
SCHOOL OF MEDICINE
INSTRUCTIONAL PROGRAMS

POSITION ORGANIZATION CHART
CHART III

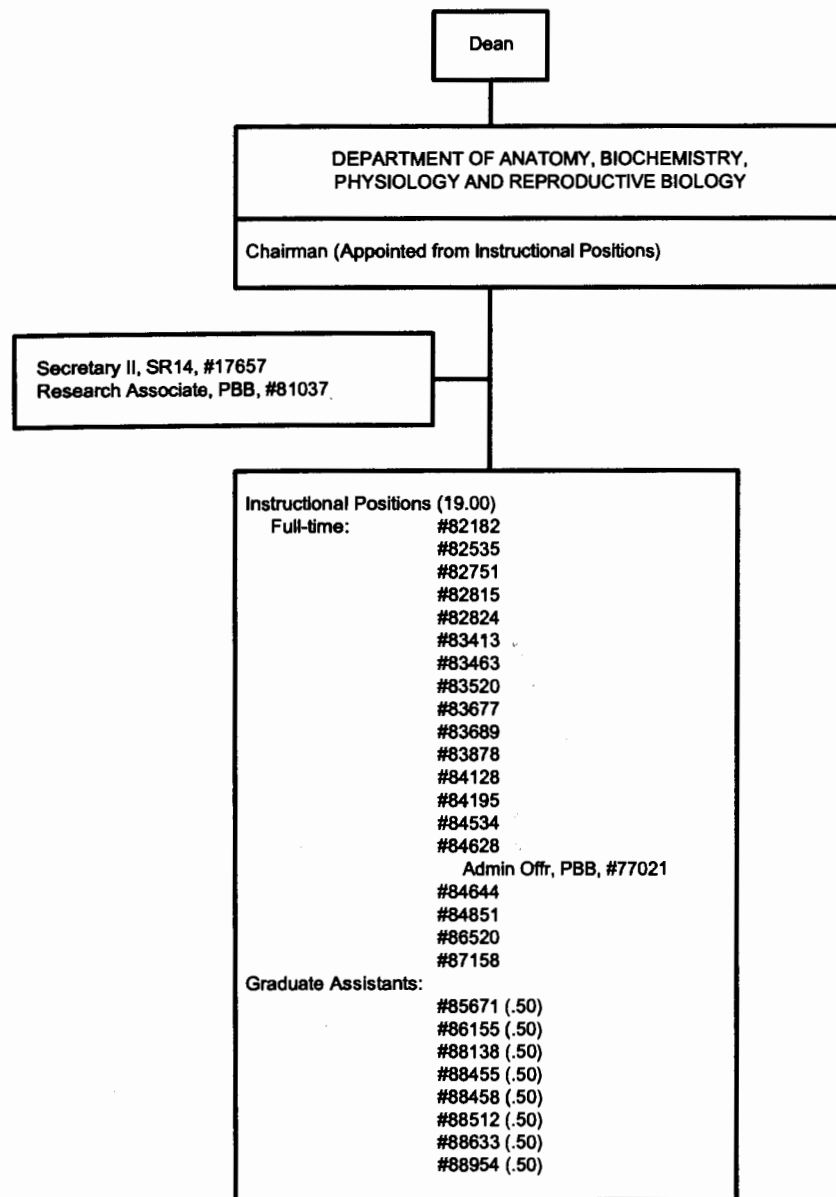


CHART UPDATED
JUL 01 2004

DATE _____

Approved: _____

Edwin C. Cadman, M.D., Dean

General Funds 26.00

STATE OF HAWAII
UNIVERSITY OF HAWAII
UNIVERSITY OF HAWAII AT MANOA
SCHOOL OF MEDICINE
INSTRUCTIONAL PROGRAMS

POSITION ORGANIZATION CHART
CHART IV

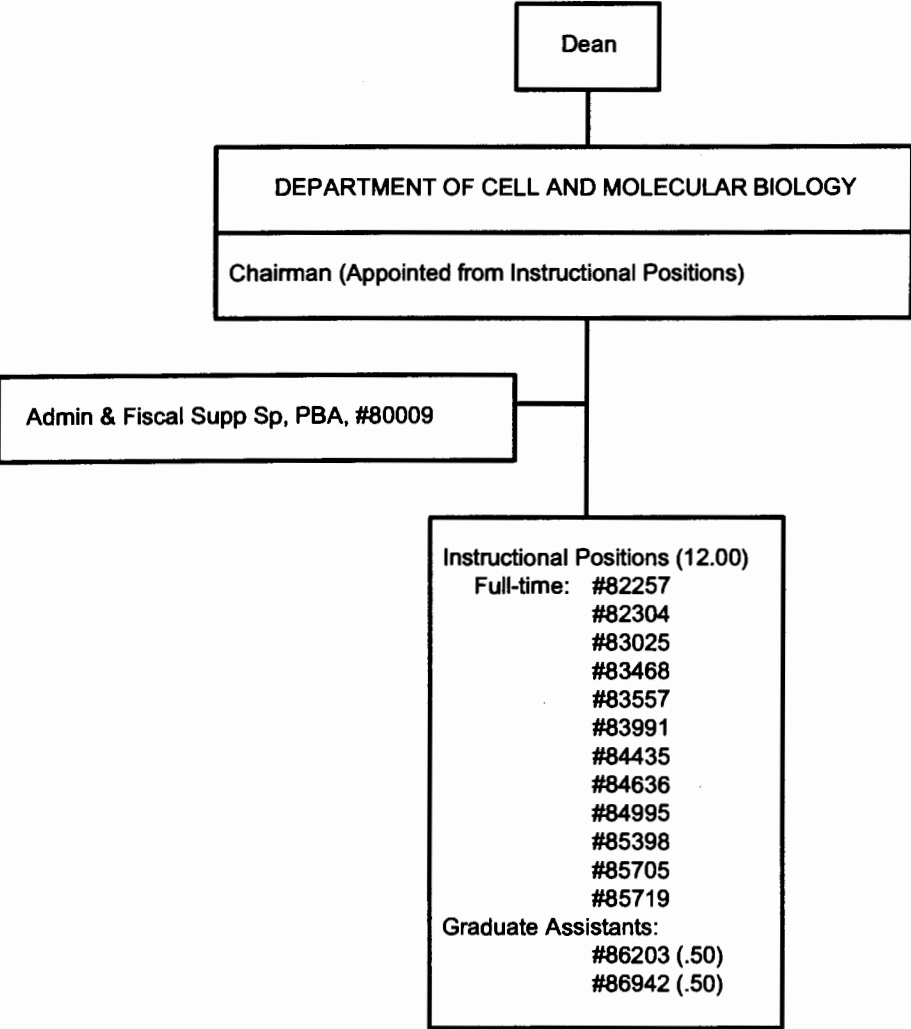
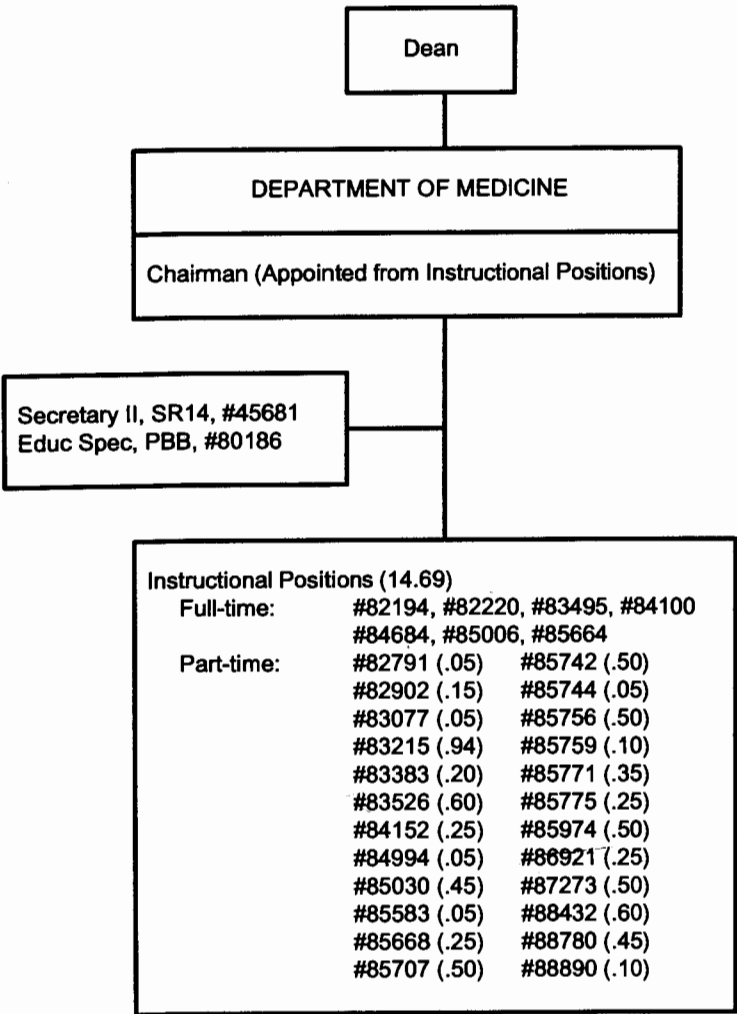


CHART UPDATED
DATE JUL 01 2004

STATE OF HAWAII
UNIVERSITY OF HAWAII
UNIVERSITY OF HAWAII AT MANOA
SCHOOL OF MEDICINE
INSTRUCTIONAL PROGRAMS

POSITION ORGANIZATION CHART
CHART V



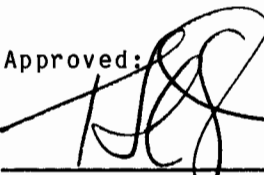
Approved: 
Edwin C. Cadman, M.D., Dean

CHART UPDATED
JUL 01 2004
DATE _____

STATE OF HAWAII
UNIVERSITY OF HAWAII
UNIVERSITY OF HAWAII AT MANOA
SCHOOL OF MEDICINE
INSTRUCTIONAL PROGRAMS

POSITION ORGANIZATION CHART
CHART VI

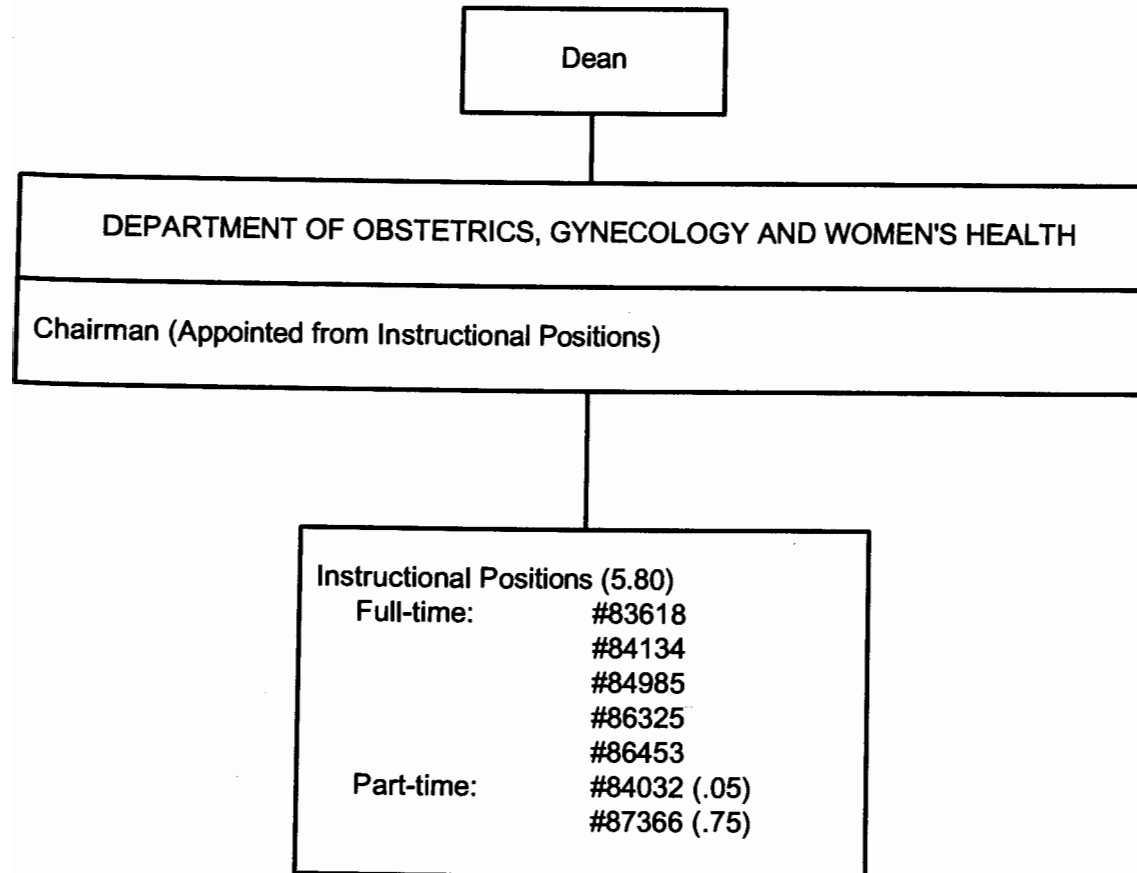


CHART UPDATED
JUL 01 2004
DATE _____

General Funds 5.80

STATE OF HAWAII
UNIVERSITY OF HAWAII
UNIVERSITY OF HAWAII AT MANOA
SCHOOL OF MEDICINE
INSTRUCTIONAL PROGRAMS

POSITION ORGANIZATION CHART
CHART VII

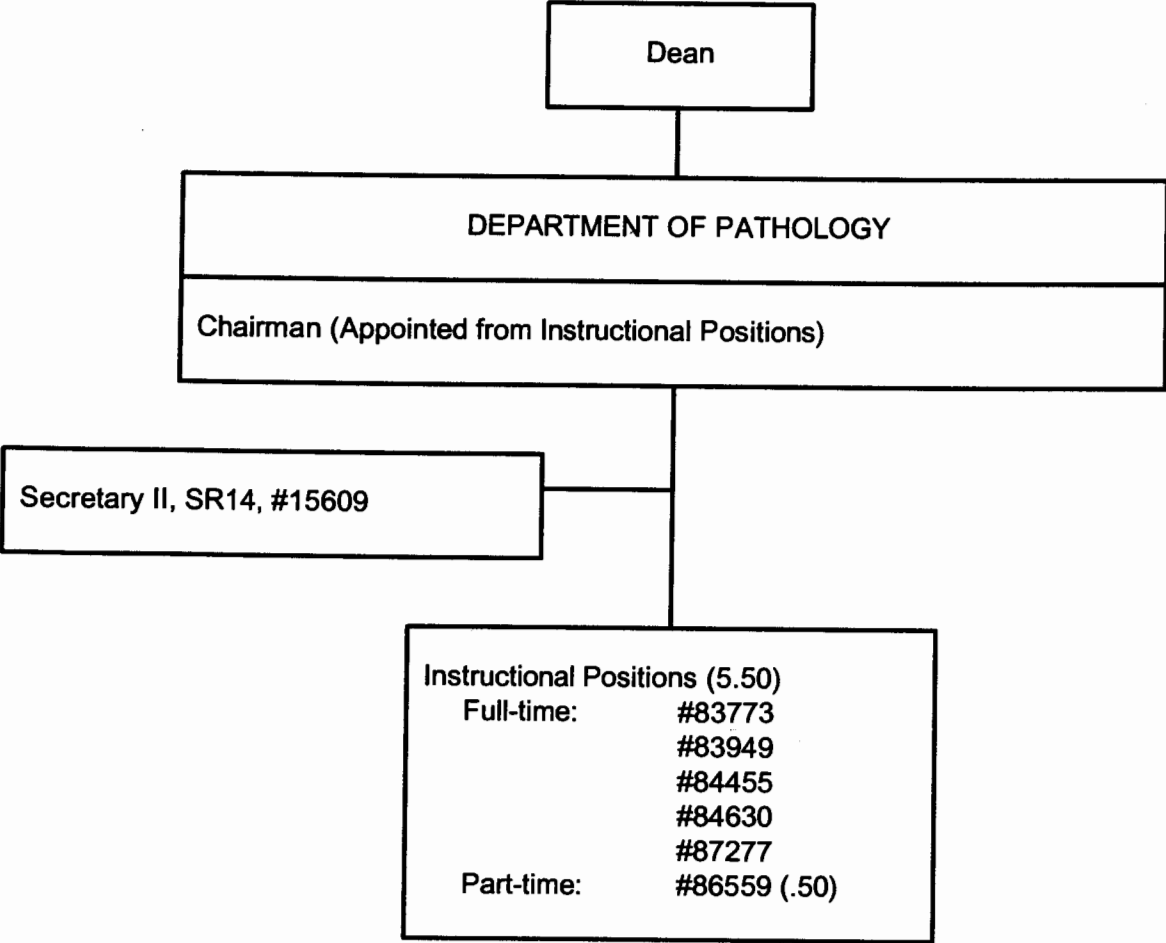


CHART UPDATED
JUL 01 2004
DATE _____

STATE OF HAWAII
UNIVERSITY OF HAWAII
UNIVERSITY OF HAWAII AT MANOA
SCHOOL OF MEDICINE
INSTRUCTIONAL PROGRAMS

POSITION ORGANIZATION CHART
CHART VIII

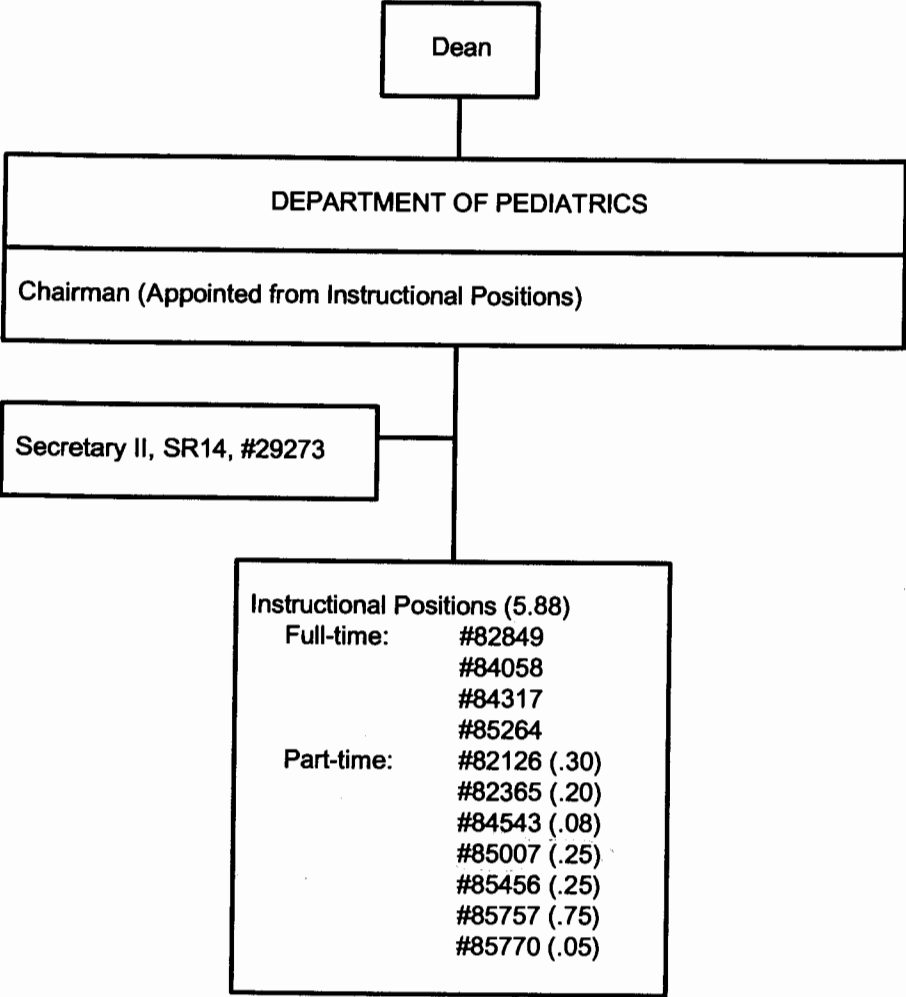


CHART UPDATED
JUL 01 2004
DATE _____

STATE OF HAWAII
UNIVERSITY OF HAWAII
UNIVERSITY OF HAWAII AT MANOA
SCHOOL OF MEDICINE
INSTRUCTIONAL PROGRAMS

POSITION ORGANIZATION CHART
CHART IX

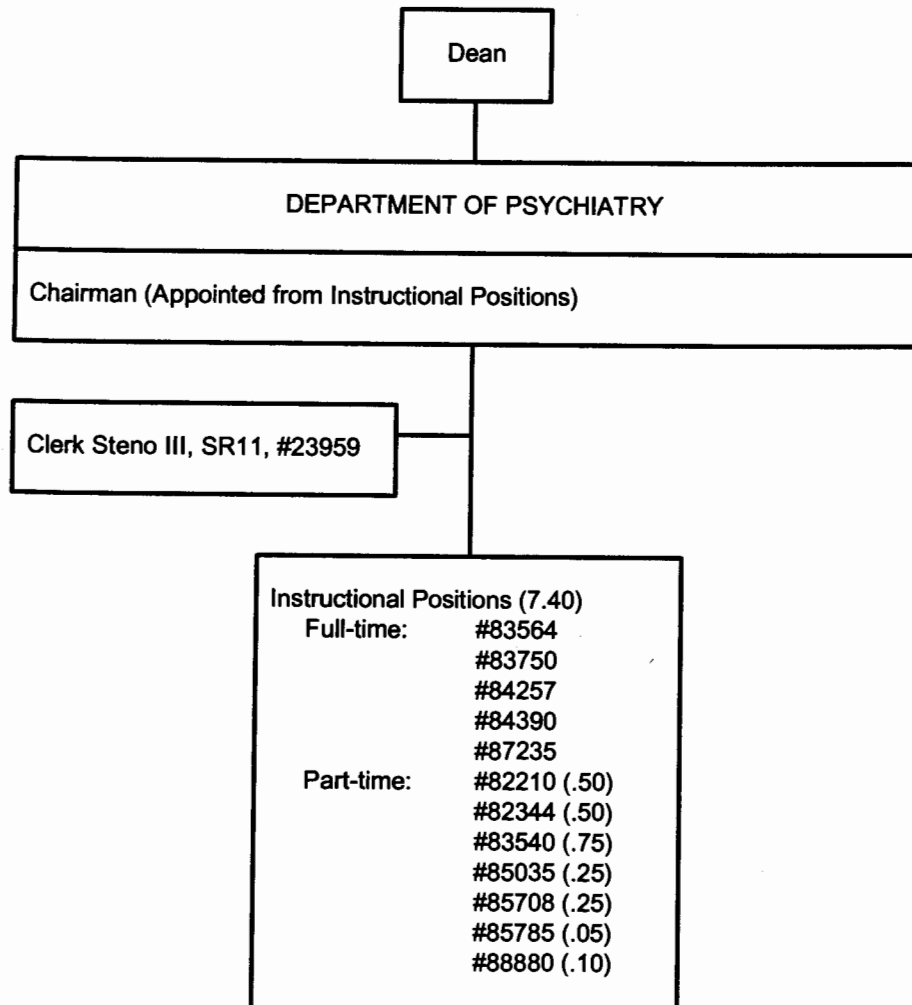


CHART UPDATED
JUL 01 2004
DATE _____

Approved: _____

Edwin C. Cadman, M.D., Dean

STATE OF HAWAII
UNIVERSITY OF HAWAII
UNIVERSITY OF HAWAII AT MANOA
SCHOOL OF MEDICINE
INSTRUCTIONAL PROGRAMS

POSITION ORGANIZATION CHART
CHART X

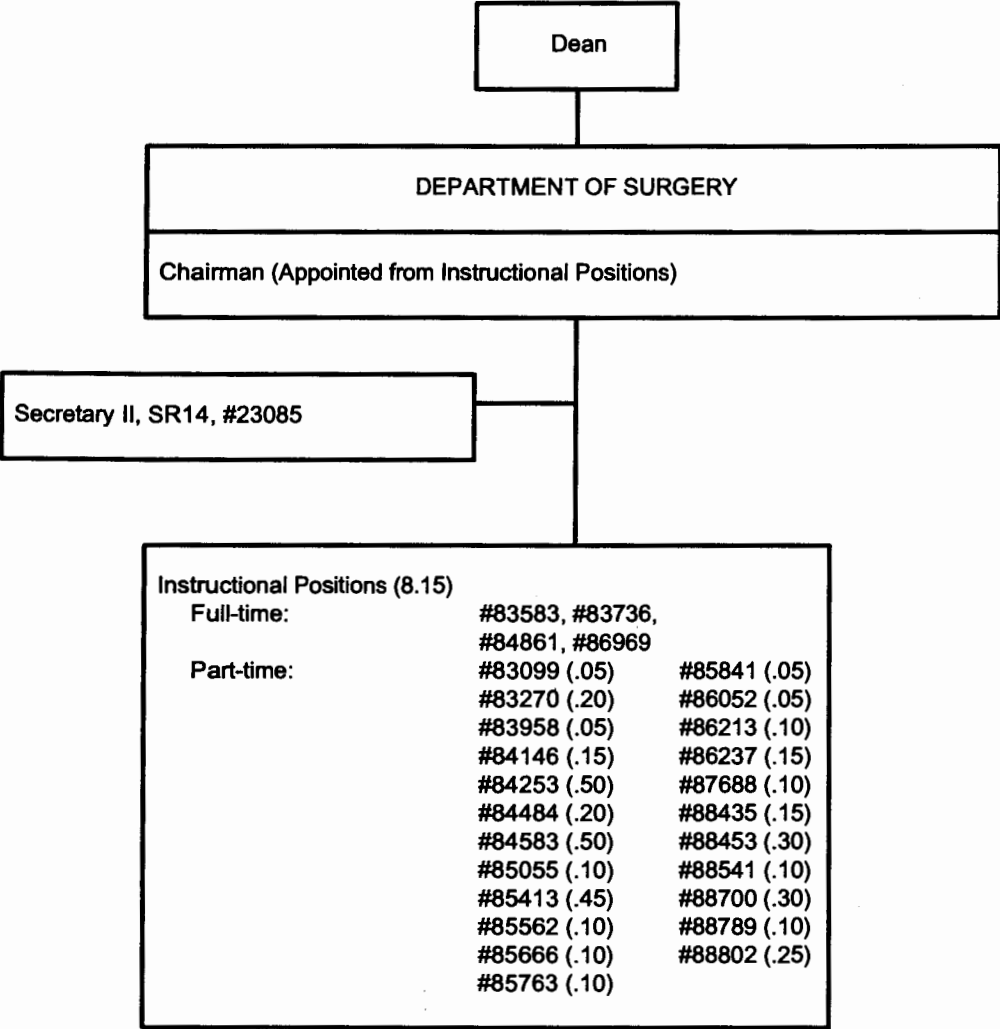



CHART UPDATED
DATE JUL 01 2004

Approved: 
Edwin C. Cadman, M.D., Dean

STATE OF HAWAII
UNIVERSITY OF HAWAII
UNIVERSITY OF HAWAII AT MANOA
SCHOOL OF MEDICINE
INSTRUCTIONAL PROGRAMS

POSITION ORGANIZATION CHART
CHART XI

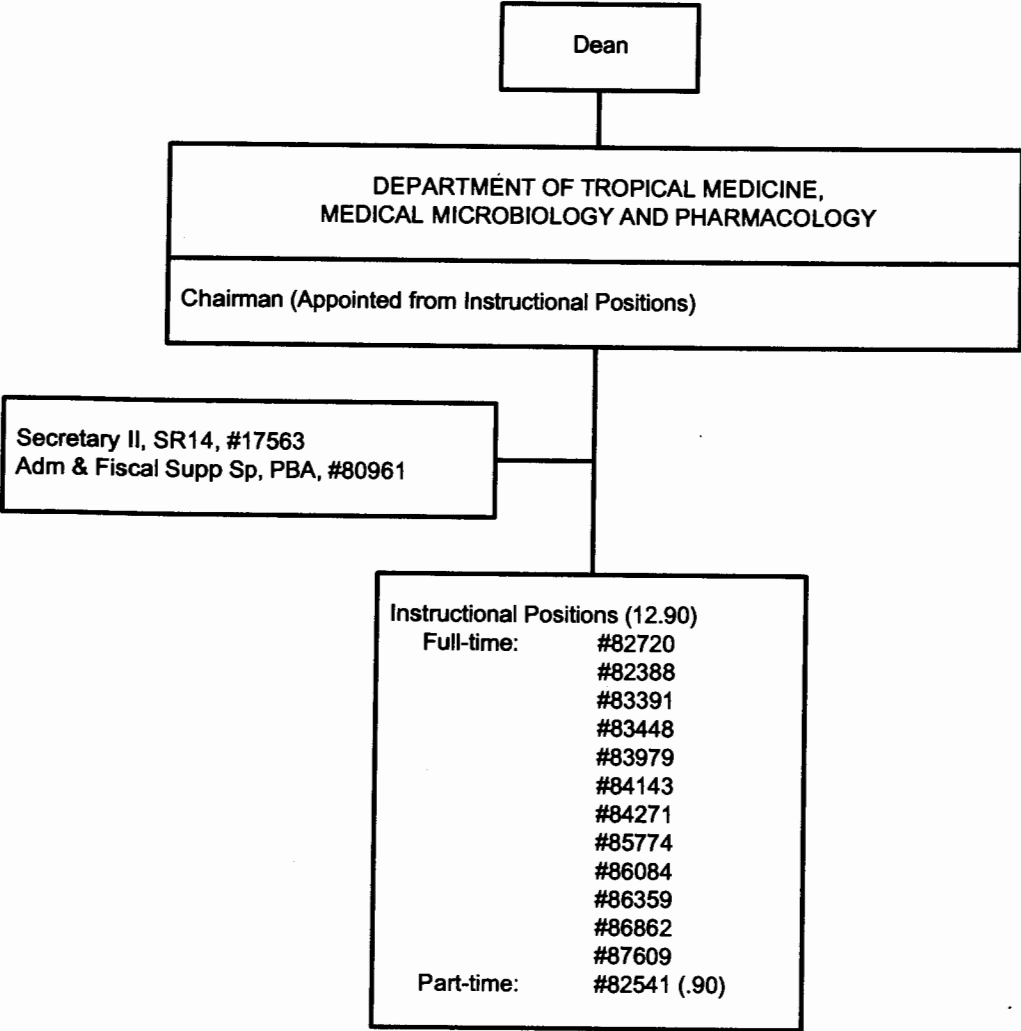
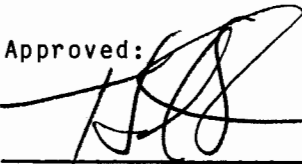


CHART UPDATED
DATE JUL 01 2004

Approved: 
Edwin C. Cadman, M.D., Dean

STATE OF HAWAII
UNIVERSITY OF HAWAII
UNIVERSITY OF HAWAII AT MANOA
SCHOOL OF MEDICINE
INSTRUCTIONAL PROGRAMS

POSITION ORGANIZATION CHART
CHART XII

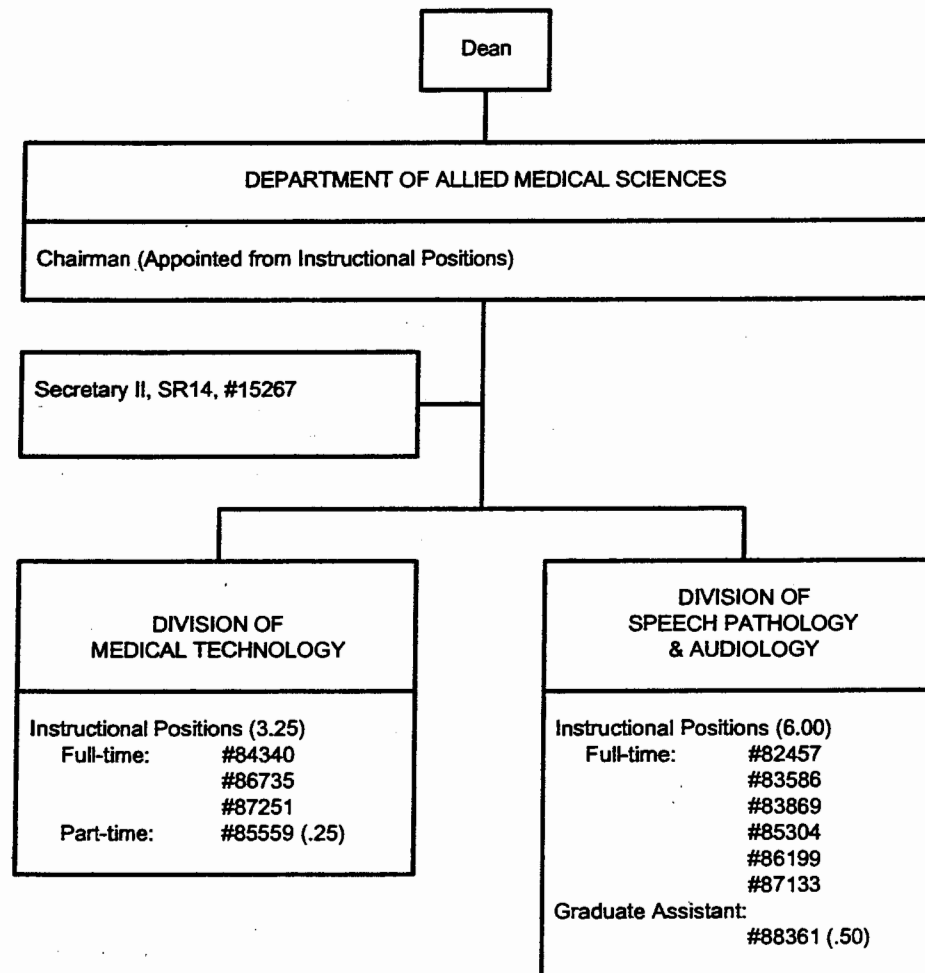


CHART UPDATED
JUL 01 2004
DATE _____

STATE OF HAWAII
UNIVERSITY OF HAWAII
UNIVERSITY OF HAWAII AT MANOA
SCHOOL OF MEDICINE
INSTRUCTIONAL PROGRAMS

POSITION ORGANIZATION CHART
CHART XIV

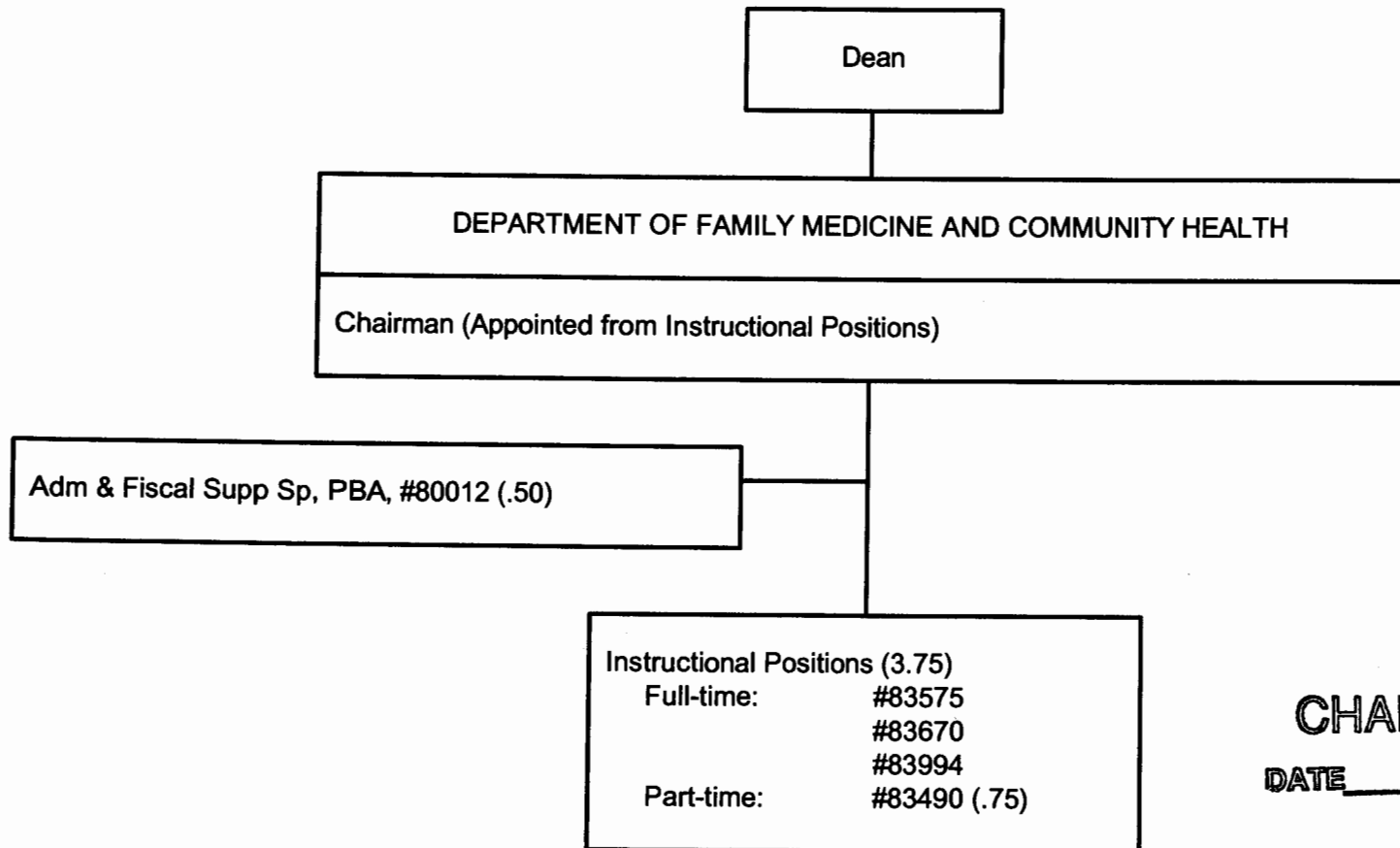


CHART UPDATED
DATE JUL 01 2004

STATE OF HAWAII
UNIVERSITY OF HAWAII
UNIVERSITY OF HAWAII AT MANOA
SCHOOL OF MEDICINE
INSTRUCTIONAL PROGRAMS

POSITION ORGANIZATION CHART
CHART XV

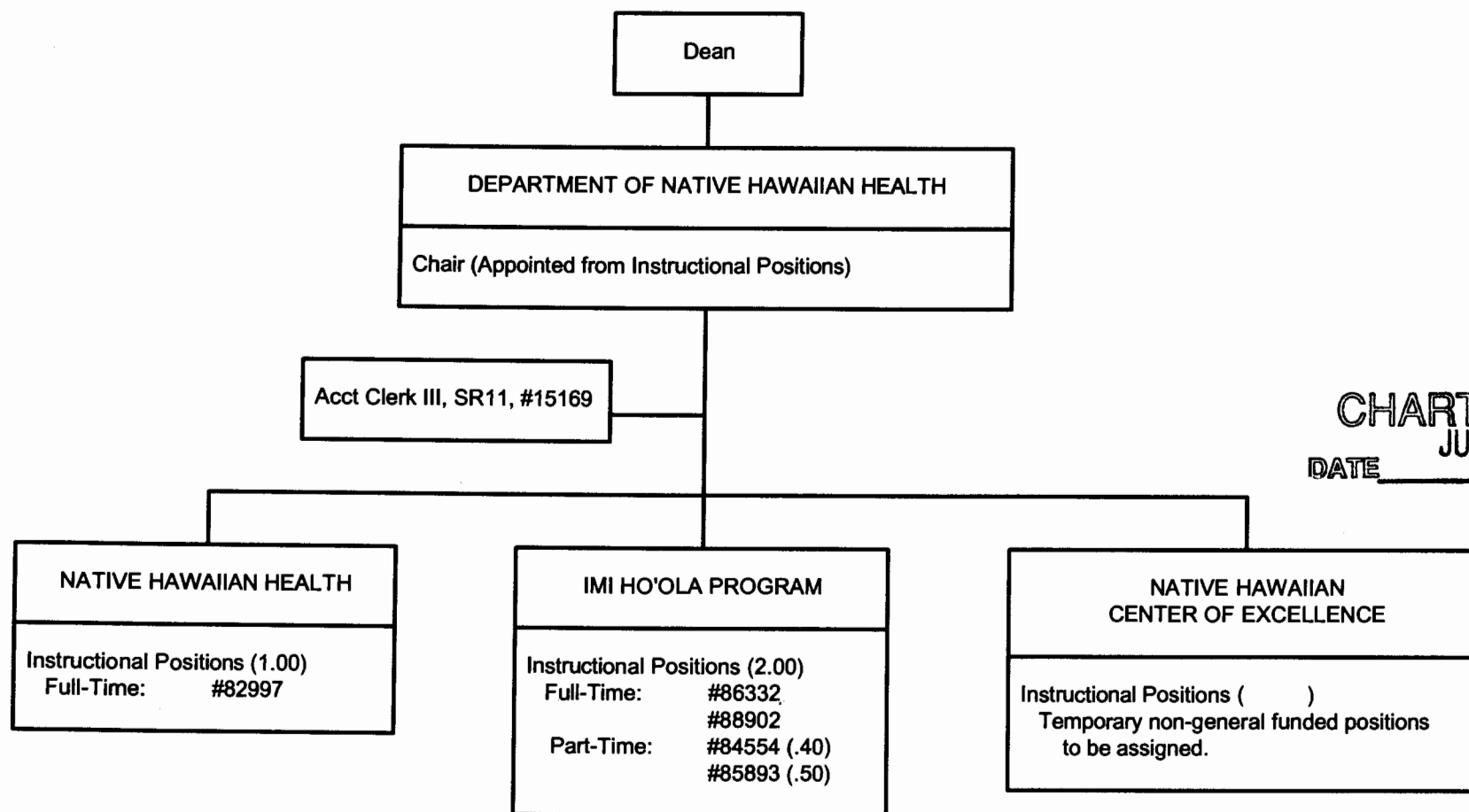
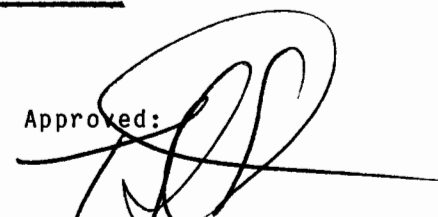


CHART UPDATED
JUL 01 2004
DATE _____

Approved: 
Edwin C. Cadman, M.D., Dean

General Fund 4.90

STATE OF HAWAII
UNIVERSITY OF HAWAII
UNIVERSITY OF HAWAII AT MANOA
SCHOOL OF MEDICINE
INSTRUCTIONAL PROGRAMS

POSITION ORGANIZATION CHART
CHART XVI

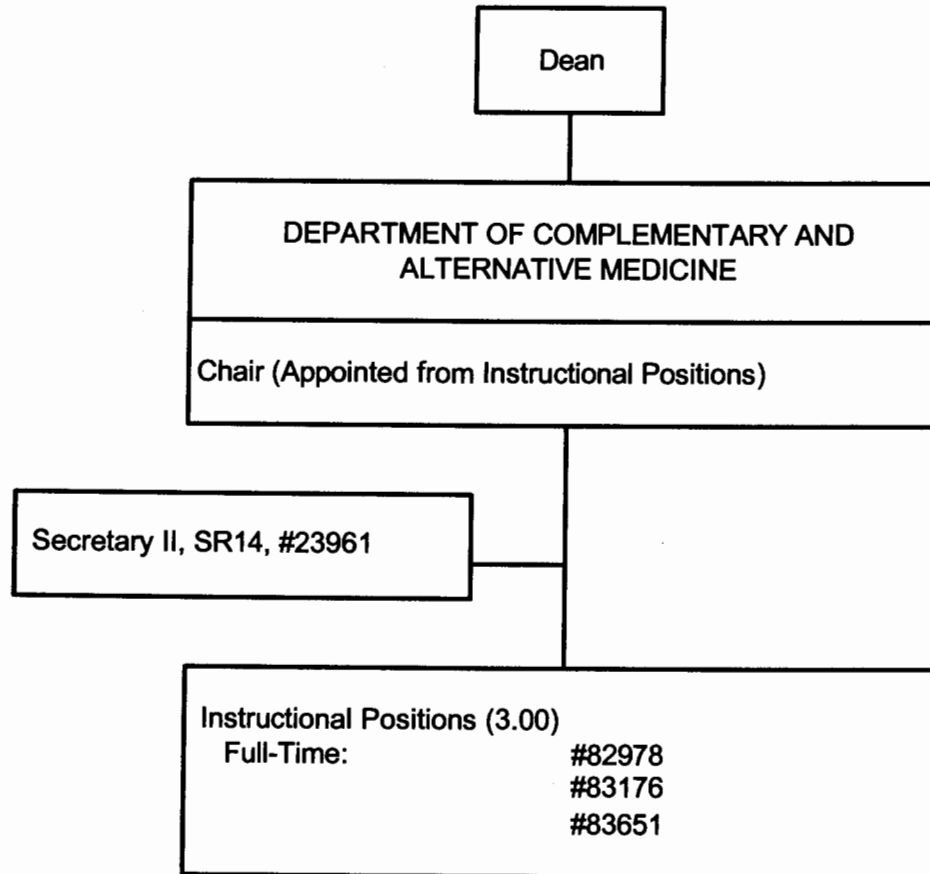
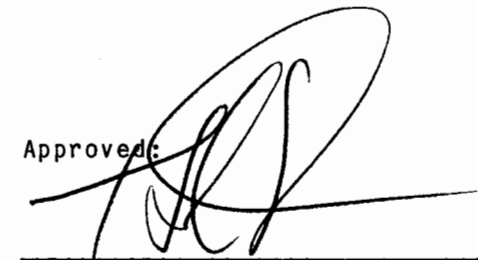


CHART UPDATED
JUL 01 2004
DATE _____

Approved: 
Edwin C. Cadman, M.D., Dean

General Funds 4.00

STATE OF HAWAII
UNIVERSITY OF HAWAII
UNIVERSITY OF HAWAII AT MANOA
SCHOOL OF MEDICINE
INSTRUCTIONAL PROGRAMS

POSITION ORGANIZATION CHART
CHART XVII

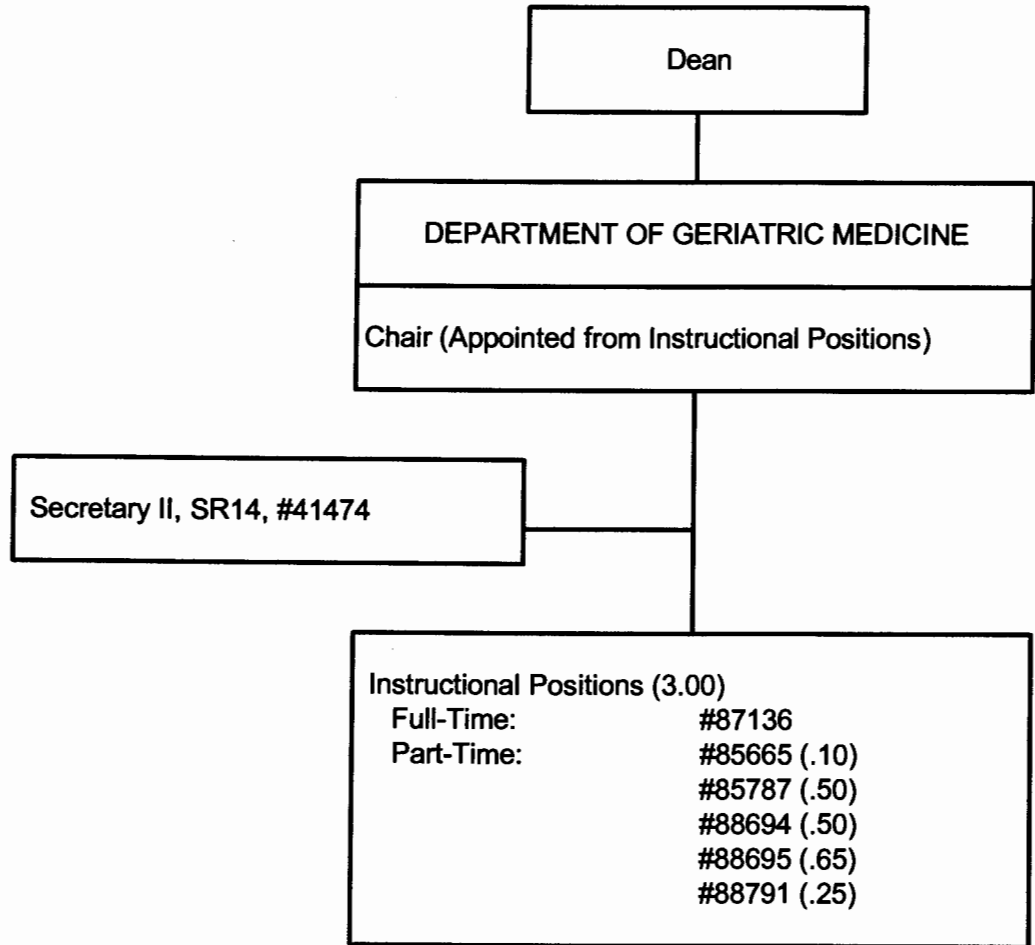
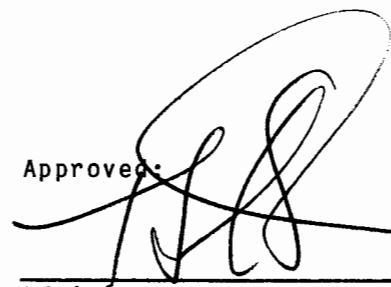


CHART UPDATED
JUL 01 2004
DATE _____

Approved: 

Edwin C. Cadman, M.D., Dean

General Funds 4.00