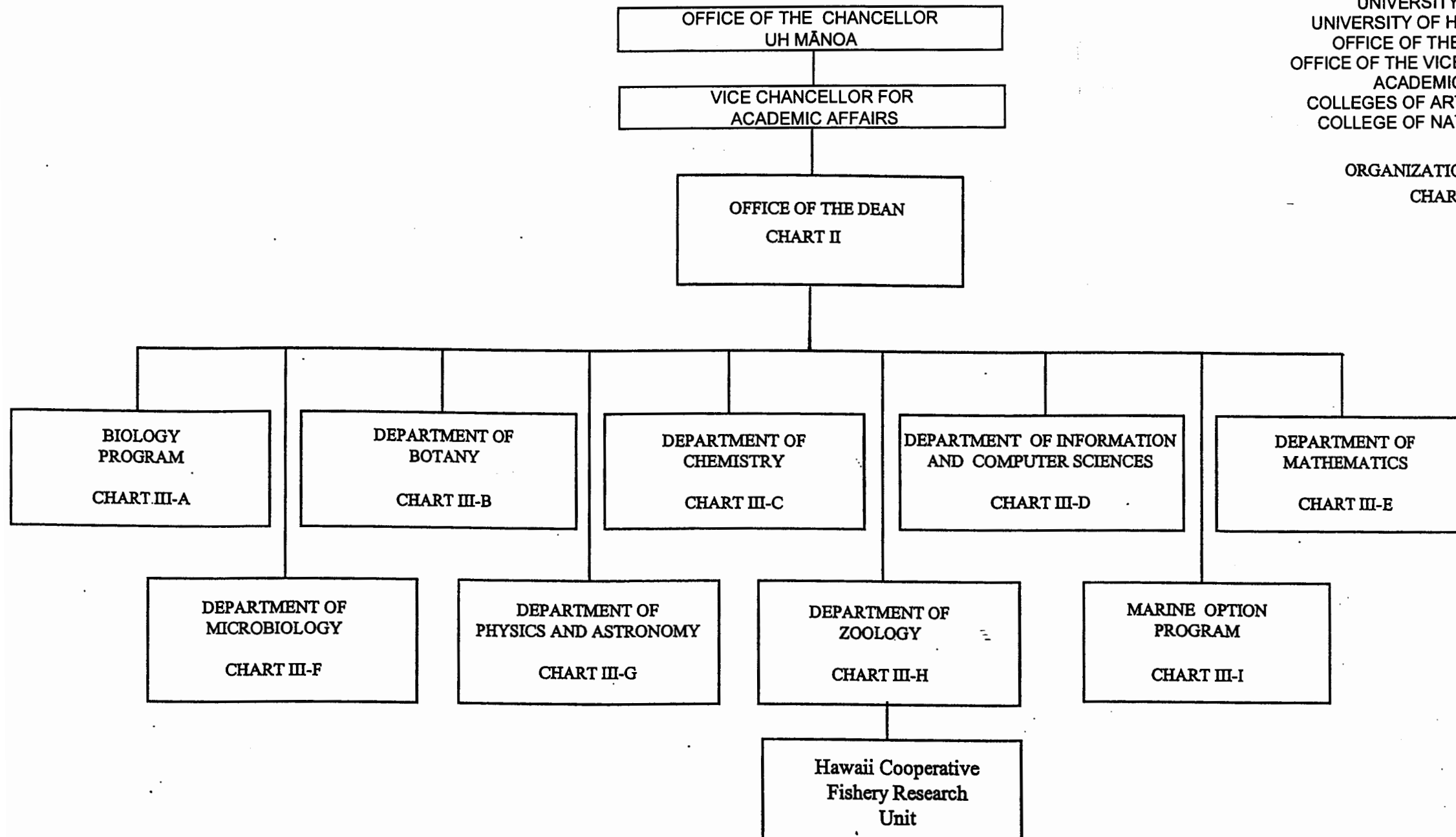


STATE OF HAWAII  
UNIVERSITY OF HAWAII  
UNIVERSITY OF HAWAII AT MĀNOA  
OFFICE OF THE CHANCELLOR  
OFFICE OF THE VICE CHANCELLOR FOR  
ACADEMIC AFFAIRS  
COLLEGES OF ARTS AND SCIENCES  
COLLEGE OF NATURAL SCIENCES

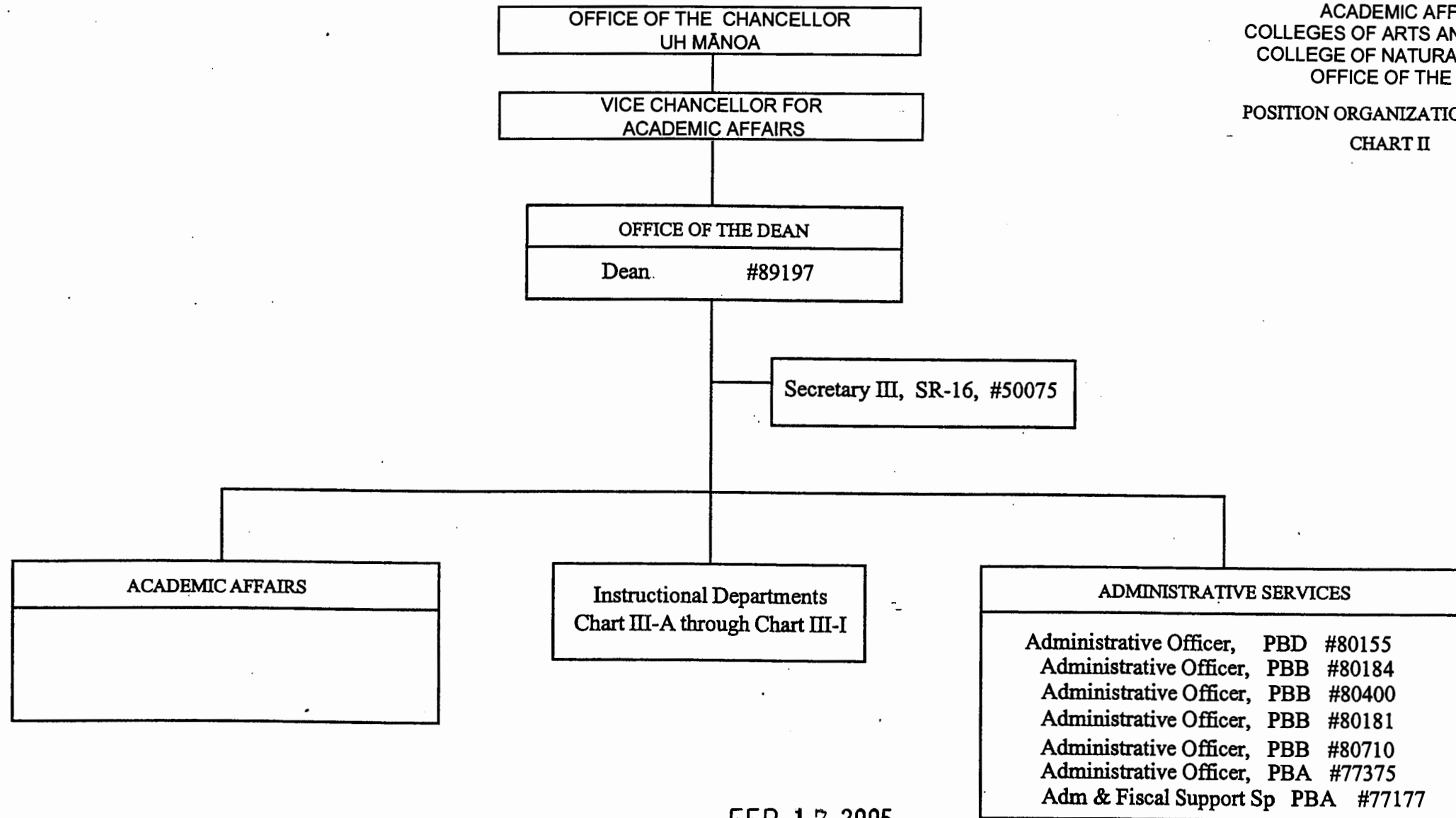
ORGANIZATION CHART  
CHART I



FEB 17 2005

STATE OF HAWAII  
 UNIVERSITY OF HAWAII  
 UNIVERSITY OF HAWAII AT MĀNOA  
 OFFICE OF THE CHANCELLOR  
 OFFICE OF THE VICE CHANCELLOR FOR  
 ACADEMIC AFFAIRS  
 COLLEGES OF ARTS AND SCIENCES  
 COLLEGE OF NATURAL SCIENCES  
 OFFICE OF THE DEAN

POSITION ORGANIZATION CHART  
 CHART II



FEB 17 2005

General Funds 9.00

UNIVERSITY OF HAWAII  
UNIVERSITY OF HAWAII AT MANOA  
COLLEGES OF ARTS AND SCIENCES  
COLLEGE OF NATURAL SCIENCES

BIOLOGY PROGRAM  
POSITION ORGANIZATION CHART  
CHART III-A

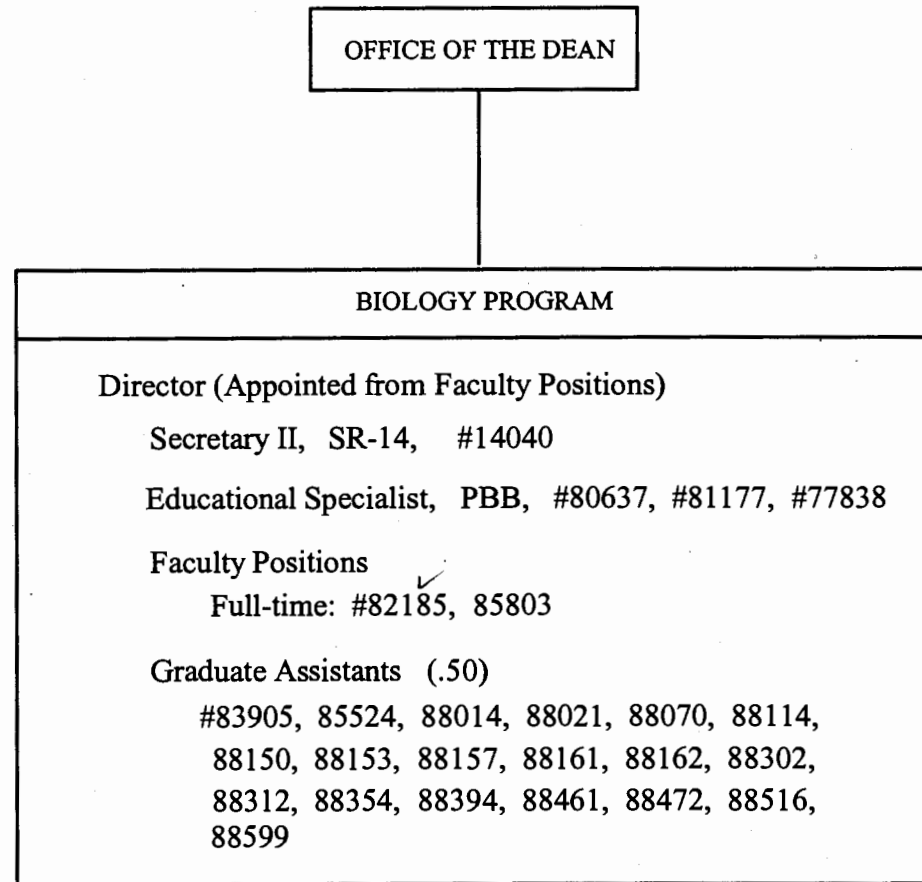
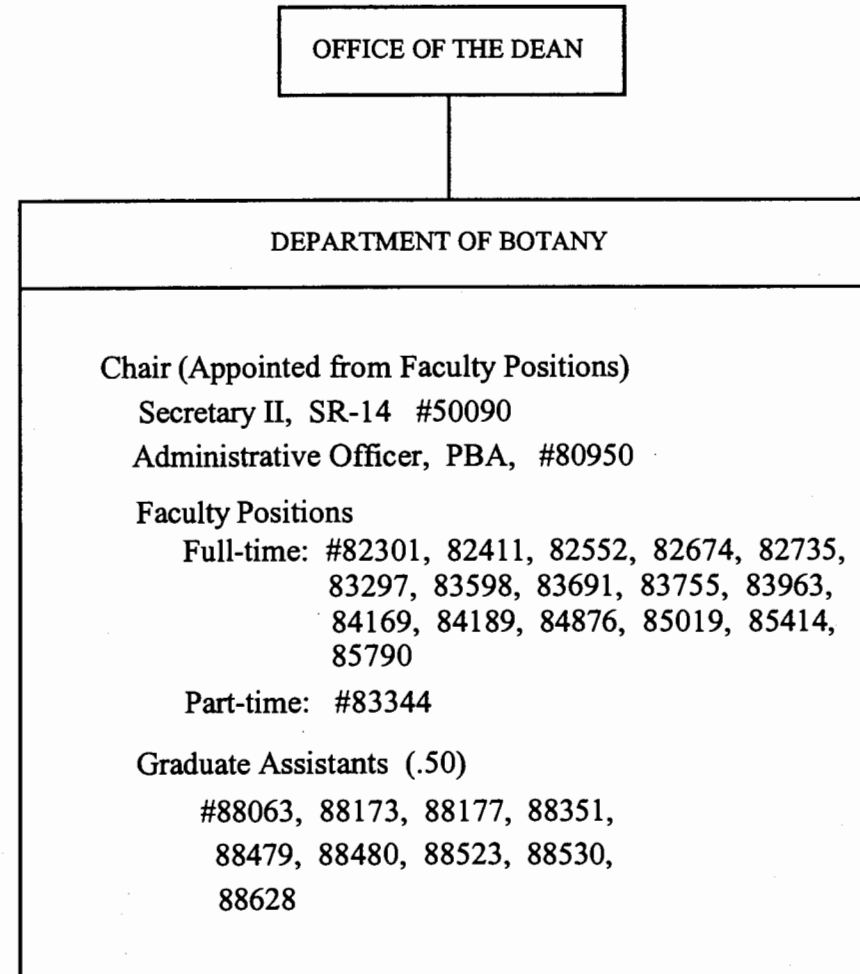


CHART UPDATED

DATE JUL 01 2004

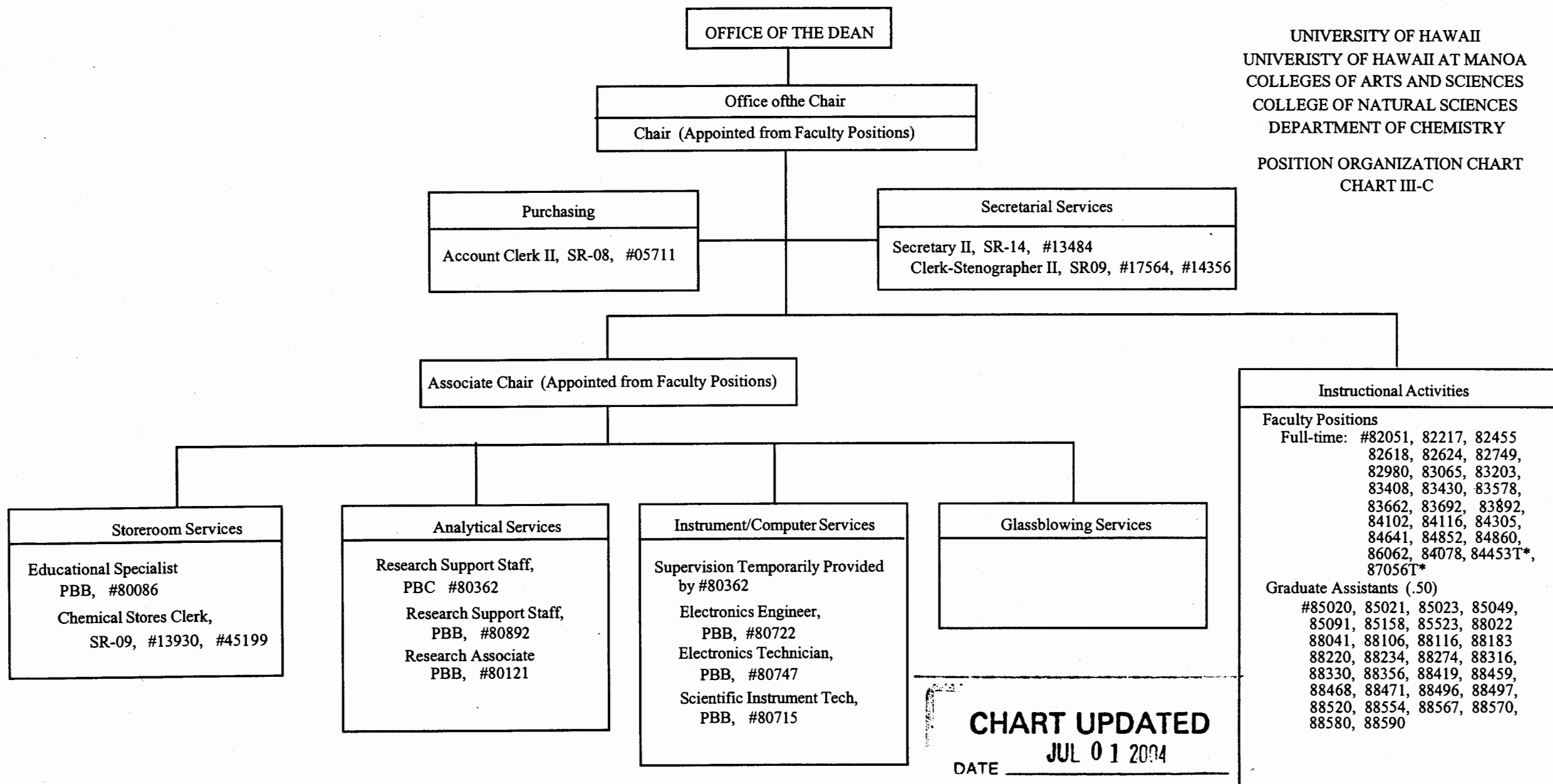
General Funds 15.50

UNIVERSITY OF HAWAII  
UNIVERSITY OF HAWAII AT MANOA  
COLLEGES OF ARTS AND SCIENCES  
COLLEGE OF NATURAL SCIENCES  
DEPARTMENT OF BOTANY  
POSITION ORGANIZATION CHART  
CHART III-B



**CHART UPDATED**  
DATE JUL 01 2004

General Funds 23.00

UNIVERSITY OF HAWAII  
UNIVERSITY OF HAWAII AT MANOA  
COLLEGES OF ARTS AND SCIENCES  
COLLEGE OF NATURAL SCIENCES  
DEPARTMENT OF CHEMISTRYPOSITION ORGANIZATION CHART  
CHART III-C

\*Appropriated Temporary Positions

General Funds 53.00

UNIVERSITY OF HAWAII  
UNIVERSITY OF HAWAII AT MANOA  
COLLEGES OF ARTS AND SCIENCES  
COLLEGE OF NATURAL SCIENCES  
DEPARTMENT OF INFORMATION  
AND COMPUTER SCIENCES  
POSITION ORGANIZATION CHART  
CHART III-D

OFFICE OF THE DEAN

DEPARTMENT OF INFORMATION AND COMPUTER SCIENCES

Chair (Appointed from Faculty Positions)

Secretary II, SR-14, #18055

Clerk Typist III, SR-10, #26814

IT Specialist, PBC, #81194

IT Specialist, PBB #81447, 99526F\*

Student Services Specialist, PBB, #81985

Faculty Positions

Full-time: #82070, 82120, 82287, 82446, 82626,  
82737, 82787, 82794, 83074, 83083,  
83381, 83393, 83602, 83857, 83889,  
83916, 84029, 84270, 84282, 84427,  
87503, 87504, 88680

Part-time: #85651T\* (0.50)

Graduate Assistants (.50)

#85650, 86422, 86464, 86465, 86466, 86467, 87556,  
87557, 87558, 88563, 83828T\*, 83834T\*, 84341T\*,  
86064T\*

\*Appropriated Temporary Positions

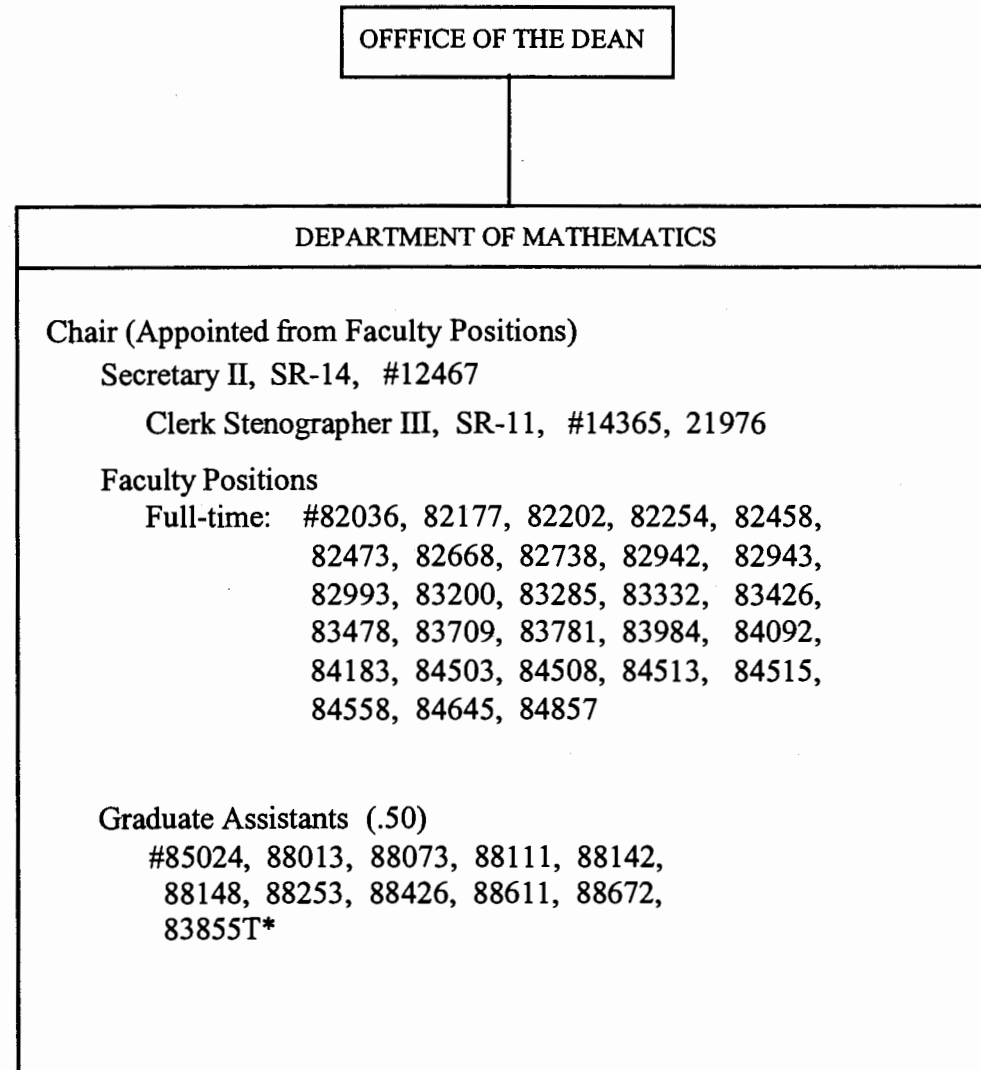
CHART UPDATED

DATE JUL 01 2004

General Funds 36.50

UNIVERSITY OF HAWAII  
UNIVERSITY OF HAWAII AT MANOA  
COLLEGES OF ARTS AND SCIENCES  
COLLEGE OF NATURAL SCIENCES  
DEPARTMENT OF MATHEMATICS

POSITION ORGANIZATION CHART  
CHART III-E



\*Appropriated Temporary Positions

CHART UPDATED

DATE JUL 01 2004

General Funds 36.50

UNIVERSITY OF HAWAII  
UNIVERSITY OF HAWAII AT MANOA  
COLLEGES OF ARTS AND SCIENCES  
COLLEGE OF NATURAL SCIENCES  
DEPARTMENT OF MICROBIOLOGY  
POSITION ORGANIZATION CHART  
CHART III-F

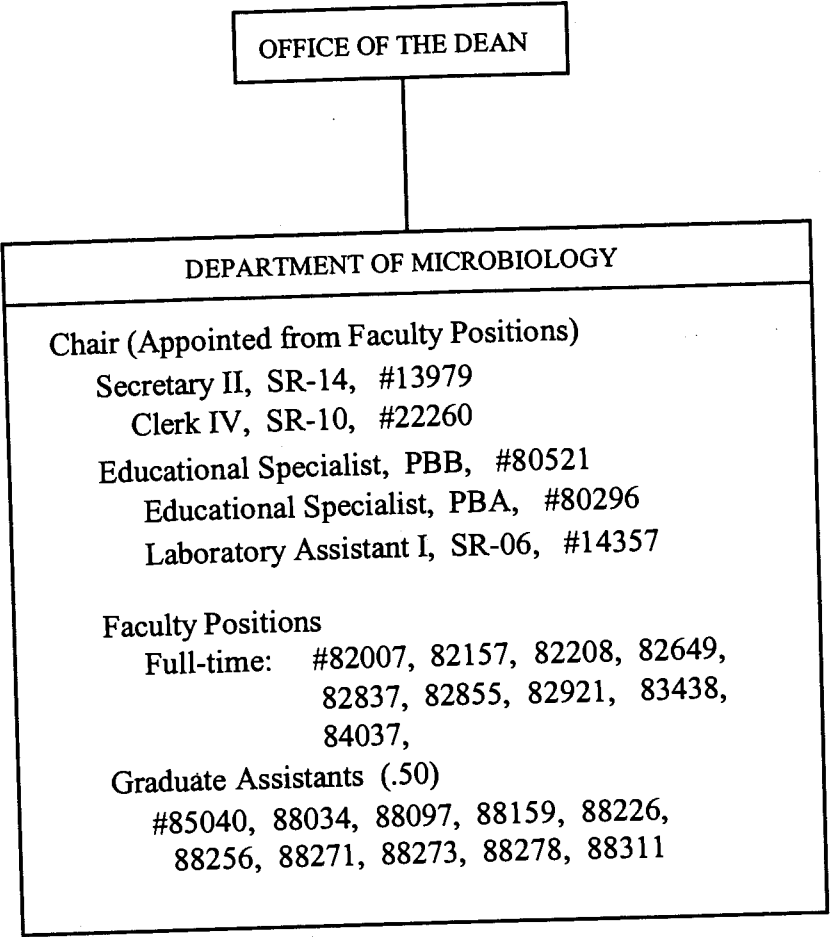


CHART UPDATED  
DATE JUL 01 2004

General Funds 19.00



UNIVERSITY OF HAWAII  
UNIVERSITY OF HAWAII AT MANOA  
COLLEGES OF ARTS AND SCIENCES  
COLLEGE OF NATURAL SCIENCES

DEPARTMENT OF PHYSICS AND ASTRONOMY

POSITION ORGANIZATION CHART  
CHART III-G

OFFICE OF THE DEAN

DEPARTMENT OF PHYSICS AND ASTRONOMY

Chair (Appointed from Faculty Positions)

Secretary II, SR-14, #12918

Clerk-Stenographer II, SR-09, #14355

Scientific Instrument Technician, PBB, #80706

Scientific Instrument Technician, PBB, #80703

Faculty Positions

Full-time: #82206, 82314, 82468, 82587, 82633,  
82770, 82875, 82893, 83534, 83547,  
83790, 83813, 83861, 83910, 83915,  
83926, 84235, 84240, 84398, 84494,  
84587, 84675, 84897, 88615, 84773

Graduate Assistants (.50)

#85506, 88055, 88057, 88176, 88198, 88270, 88309,  
88385, 88389, 88441, 88478, 88524, 88593, 88650,  
83844T\*, 83849T\*, 84184T\*

CHART UPDATED  
JUL 01 2004  
DATE \_\_\_\_\_

General Funds 37.50

\*Appropriated Temporary Positions

UNIVERSITY OF HAWAII  
UNIVERSITY OF HAWAII AT MANOA  
COLLEGES OF ARTS AND SCIENCES  
COLLEGE OF NATURAL SCIENCES

DEPARTMENT OF ZOOLOGY

POSITION ORGANIZATION CHART  
CHART III-H

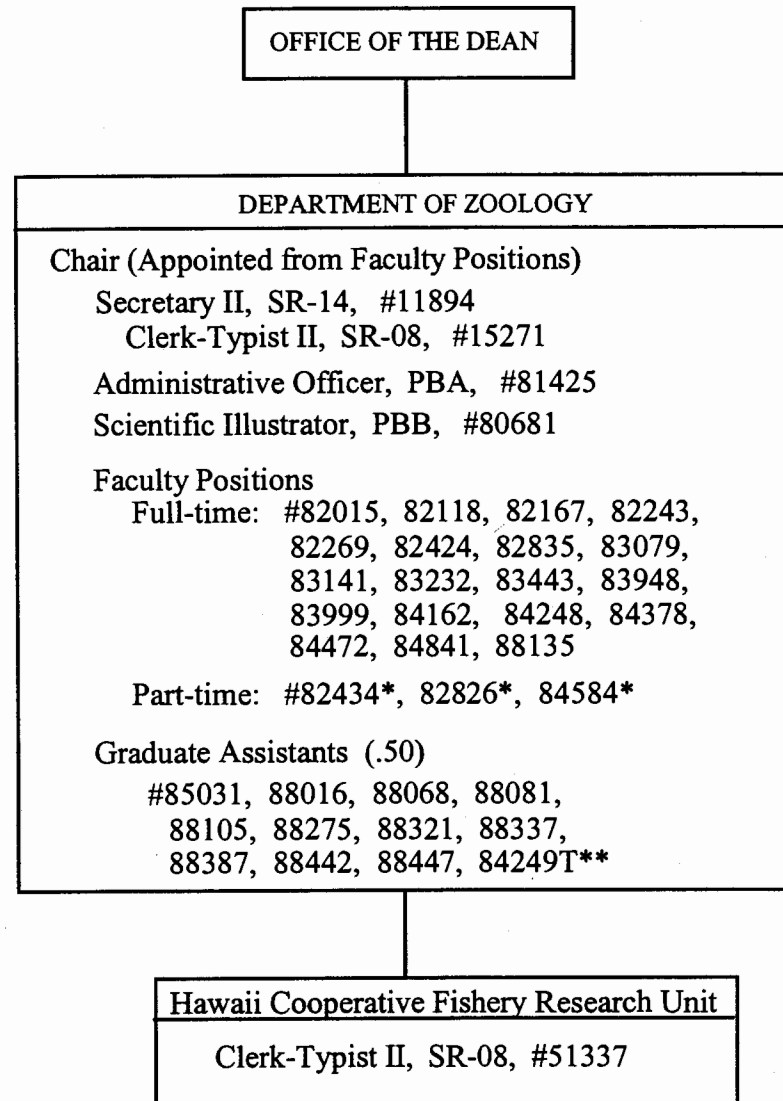


CHART UPDATED  
JUL 01 2004  
DATE \_\_\_\_\_

\*Joint Appointments  
\*\*Appropriated Temporary Positions

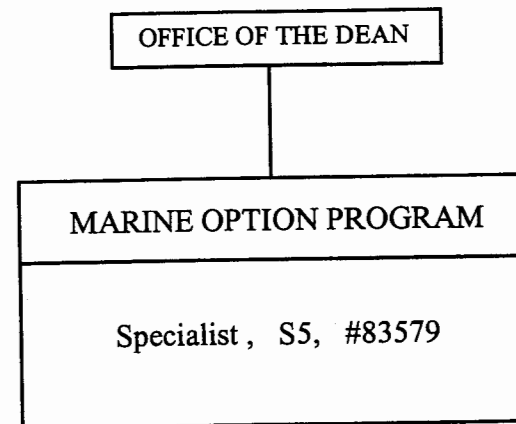
General Funds 31.50

STATE OF HAWAII

UNIVERSITY OF HAWAII  
UNIVERSITY OF HAWAII AT MANOA  
COLLEGES OF ARTS AND SCIENCES  
COLLEGE OF NATURAL SCIENCES

MARINE OPTION PROGRAM

POSITION ORGANIZATION CHART  
CHART III-I

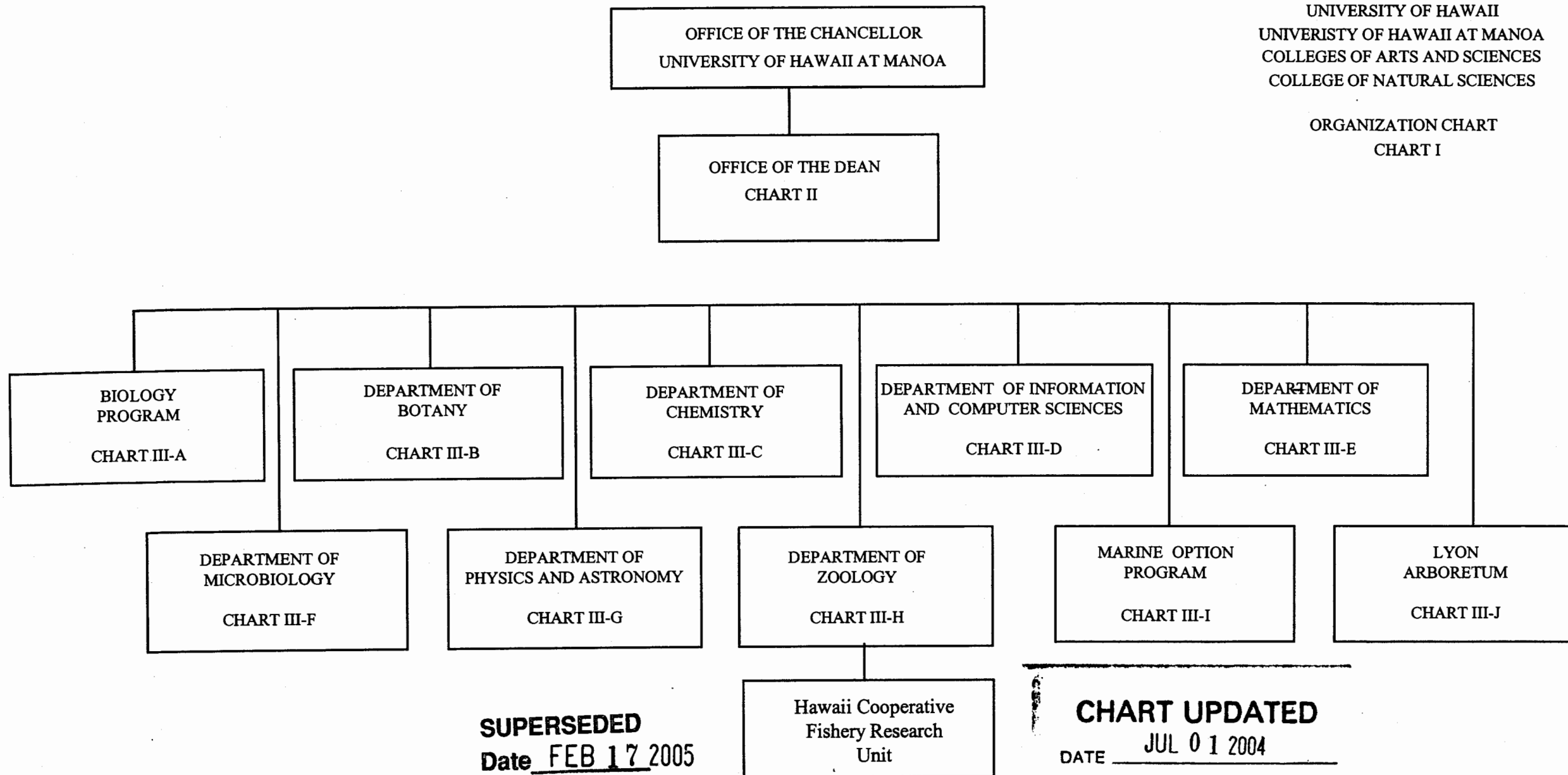


**CHART UPDATED**  
JUL 01 2004  
DATE \_\_\_\_\_

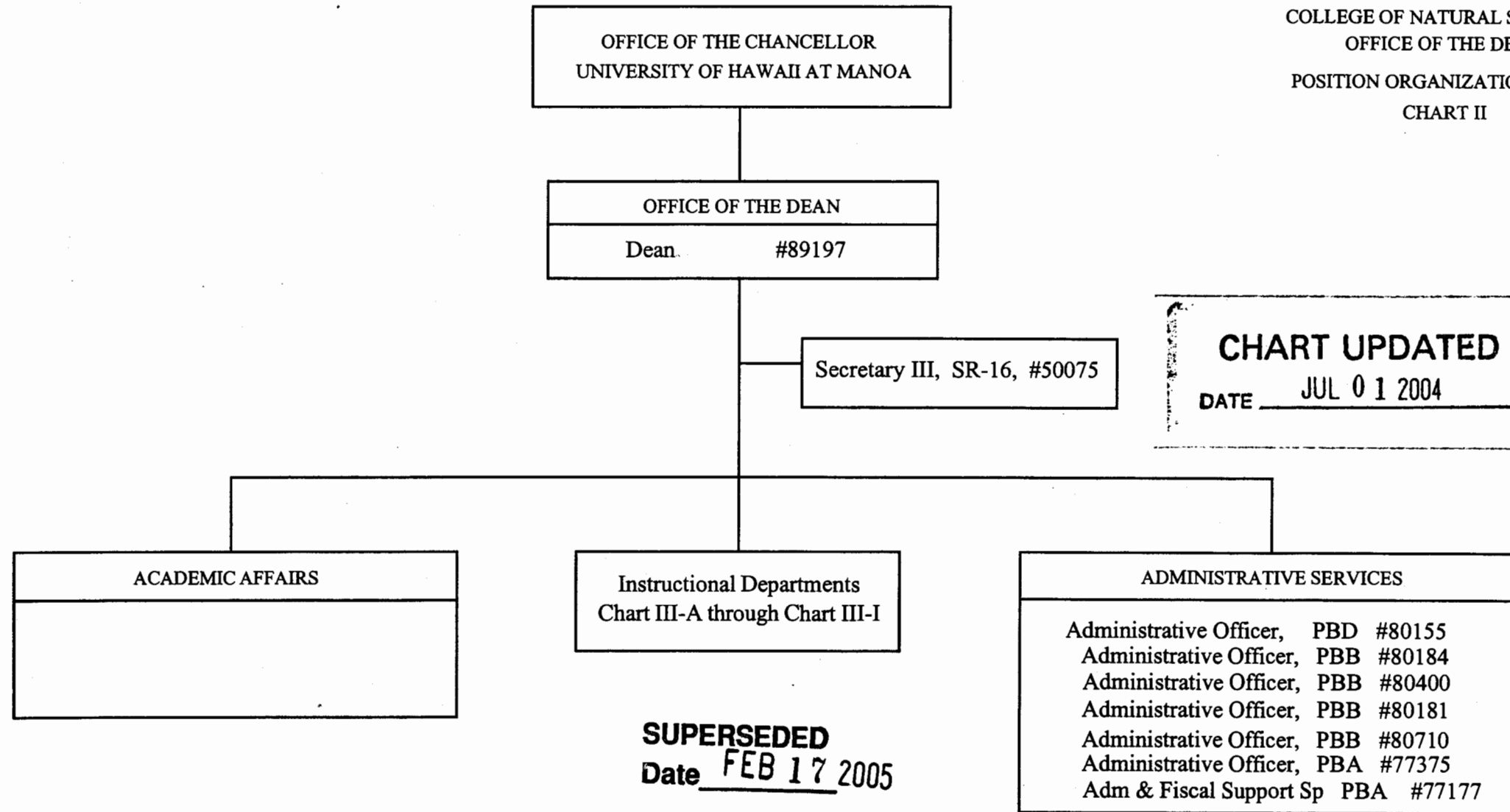
General Funds 1.00

UNIVERSITY OF HAWAII  
UNIVERSITY OF HAWAII AT MANOA  
COLLEGES OF ARTS AND SCIENCES  
COLLEGE OF NATURAL SCIENCES

ORGANIZATION CHART  
CHART I



UNIVERSITY OF HAWAII  
UNIVERSITY OF HAWAII AT MANOA  
COLLEGES OF ARTS AND SCIENCES  
COLLEGE OF NATURAL SCIENCES  
OFFICE OF THE DEAN  
POSITION ORGANIZATION CHART  
CHART II



UNIVERSITY OF HAWAII  
UNIVERSITY OF HAWAII AT MANOA  
COLLEGES OF ARTS AND SCIENCES  
COLLEGE OF NATURAL SCIENCES  
HAROLD L. LYON ARBORETUM  
POSITION ORGANIZATION CHART  
CHART III-J

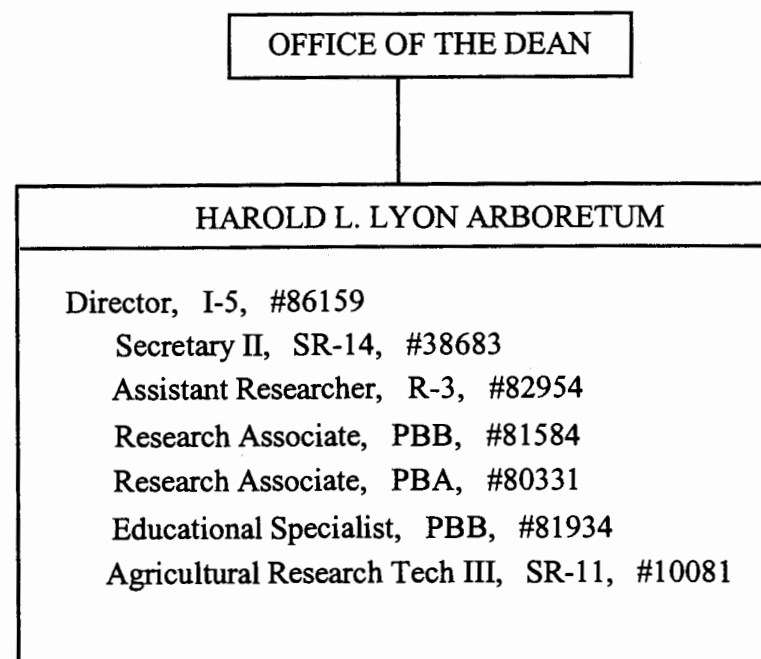


CHART UPDATED  
JUL 01 2004  
DATE \_\_\_\_\_

General Funds 7.00

**SUPERSEDED**  
Date FEB 17 2005