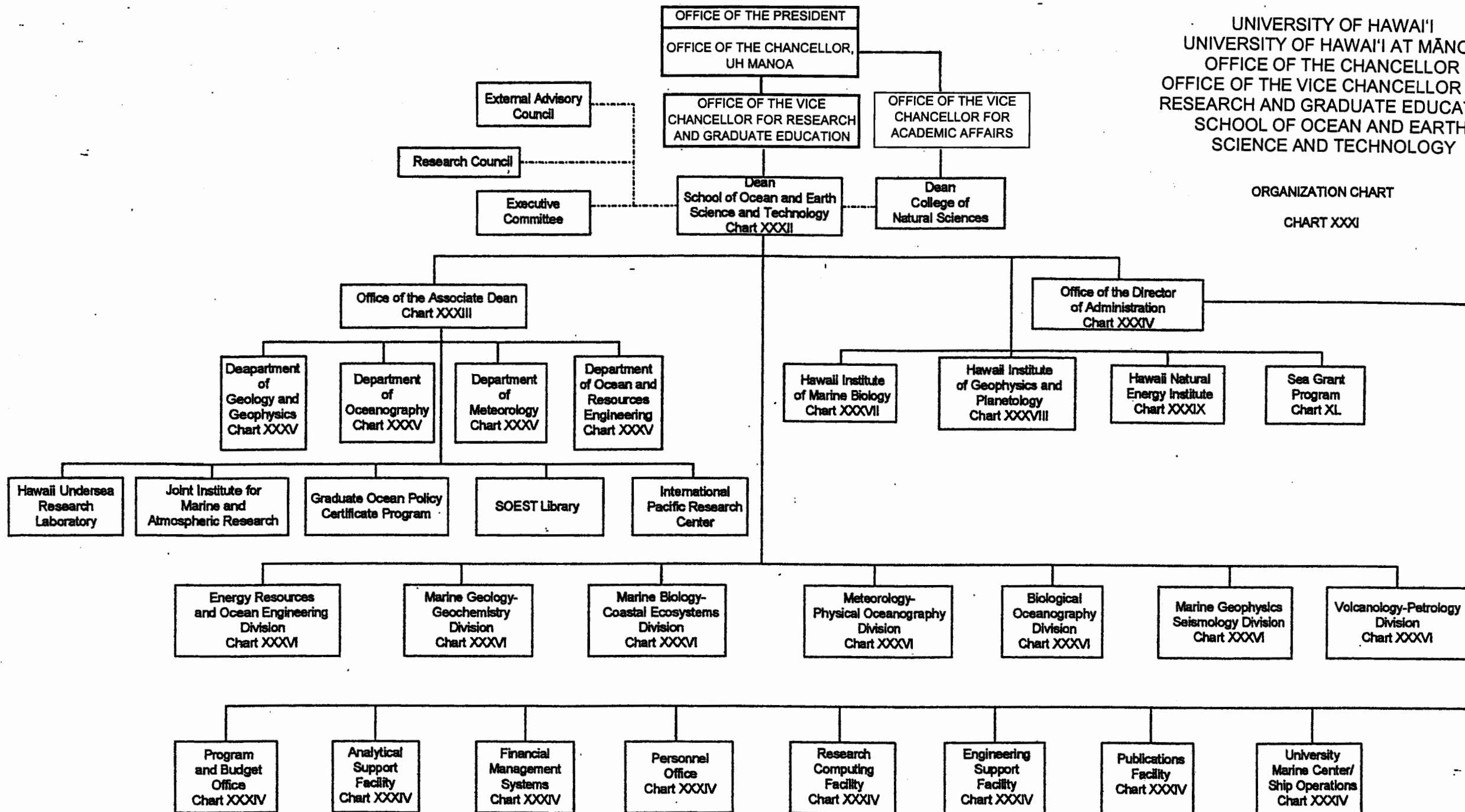


UNIVERSITY OF HAWAII
UNIVERSITY OF HAWAII AT MĀNOA
OFFICE OF THE CHANCELLOR
OFFICE OF THE VICE CHANCELLOR FOR
RESEARCH AND GRADUATE EDUCATION
SCHOOL OF OCEAN AND EARTH
SCIENCE AND TECHNOLOGY

ORGANIZATION CHART
CHART XXXI

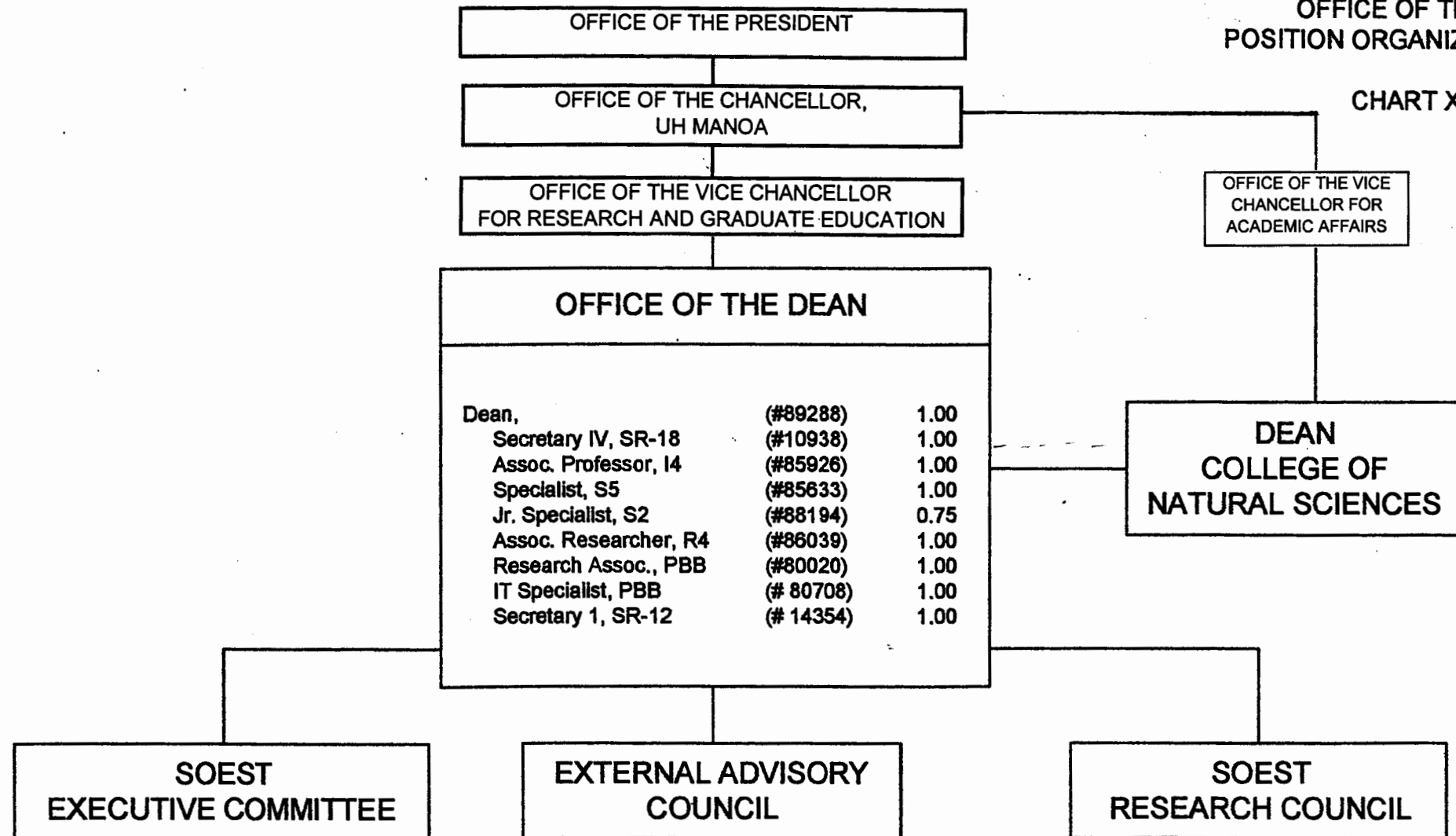


FEB 17 2005

UNIVERSITY OF HAWAII
UNIVERSITY OF HAWAII AT MĀNOA
OFFICE OF THE CHANCELLOR
OFFICE OF THE VICE CHANCELLOR FOR
RESEARCH AND GRADUATE EDUCATION
SCHOOL OF OCEAN AND EARTH
SCIENCE AND TECHNOLOGY

OFFICE OF THE DEAN
POSITION ORGANIZATION CHART

CHART XXXII



FEB 17 2005

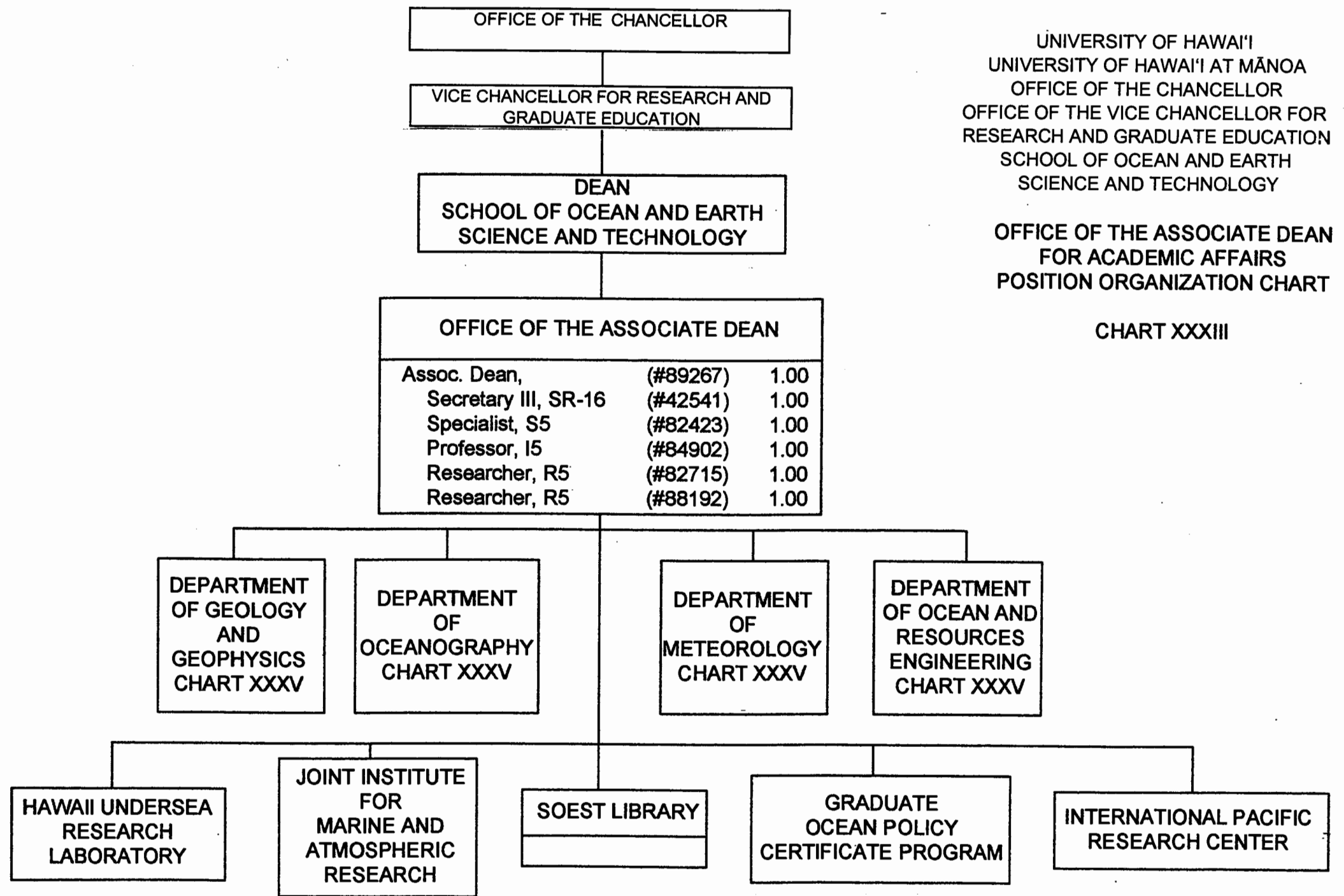


CHART XXXIII

FEB 17 2005

APPROVED:

Klaus Keil
Klaus Keil, Interim Dean 07-01-2004

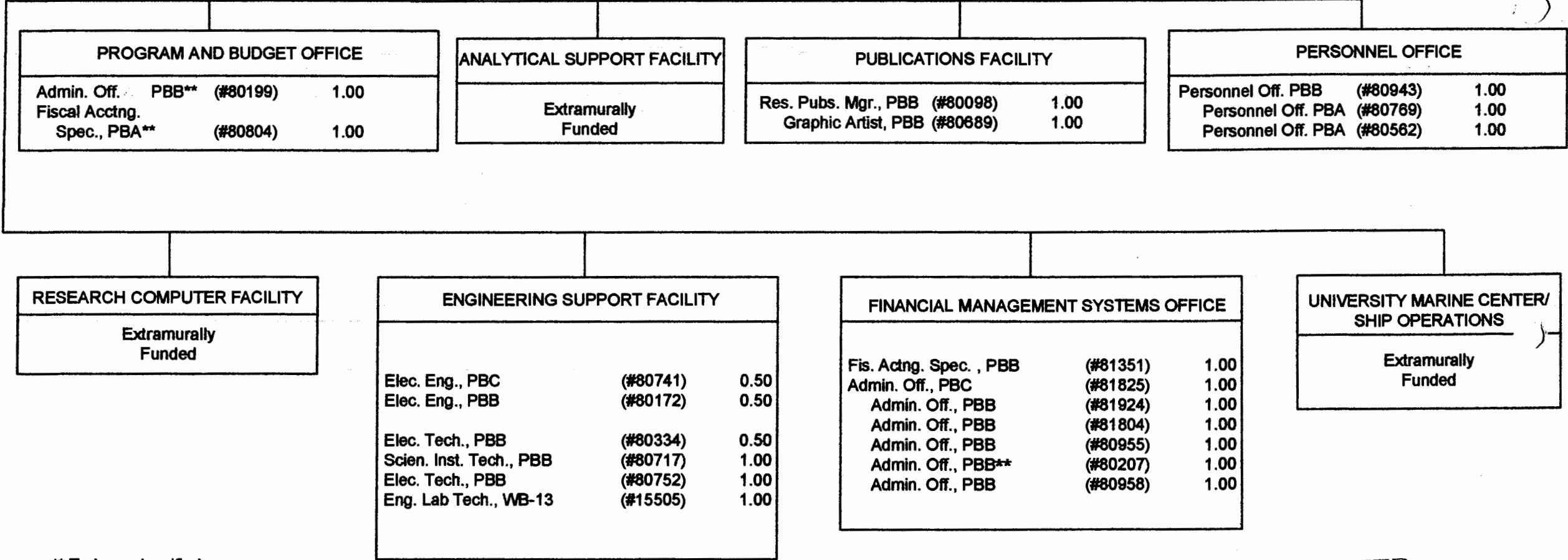
DEAN
SCHOOL OF OCEAN AND EARTH
SCIENCE AND TECHNOLOGY

OFFICE OF
DIRECTOR OF ADMINISTRATION
Dir. of Admin. Services, (#89291) 1.00

Secretary III, SR-16 (#44083) 1.00

STATE OF HAWAII
UNIVERSITY OF HAWAII
UNIVERSITY OF HAWAII AT MANOA
SCHOOL OF OCEAN AND EARTH
SCIENCE AND TECHNOLOGY

OFFICE OF THE DIRECTOR
OF ADMINISTRATION
POSITION ORGANIZATION CHART
CHART XXXIV



** To be reclassified

CHART UPDATED
DATE JUL - 1 2004

APPROVED:

Klaus Keil
Klaus Keil, Interim Dean 07-01-2004

STATE OF HAWAII
UNIVERSITY OF HAWAII
UNIVERSITY OF HAWAII AT MANOA
SCHOOL OF OCEAN AND EARTH
SCIENCE AND TECHNOLOGY

DEPARTMENTS
POSITION ORGANIZATION CHART
CHART XXXV

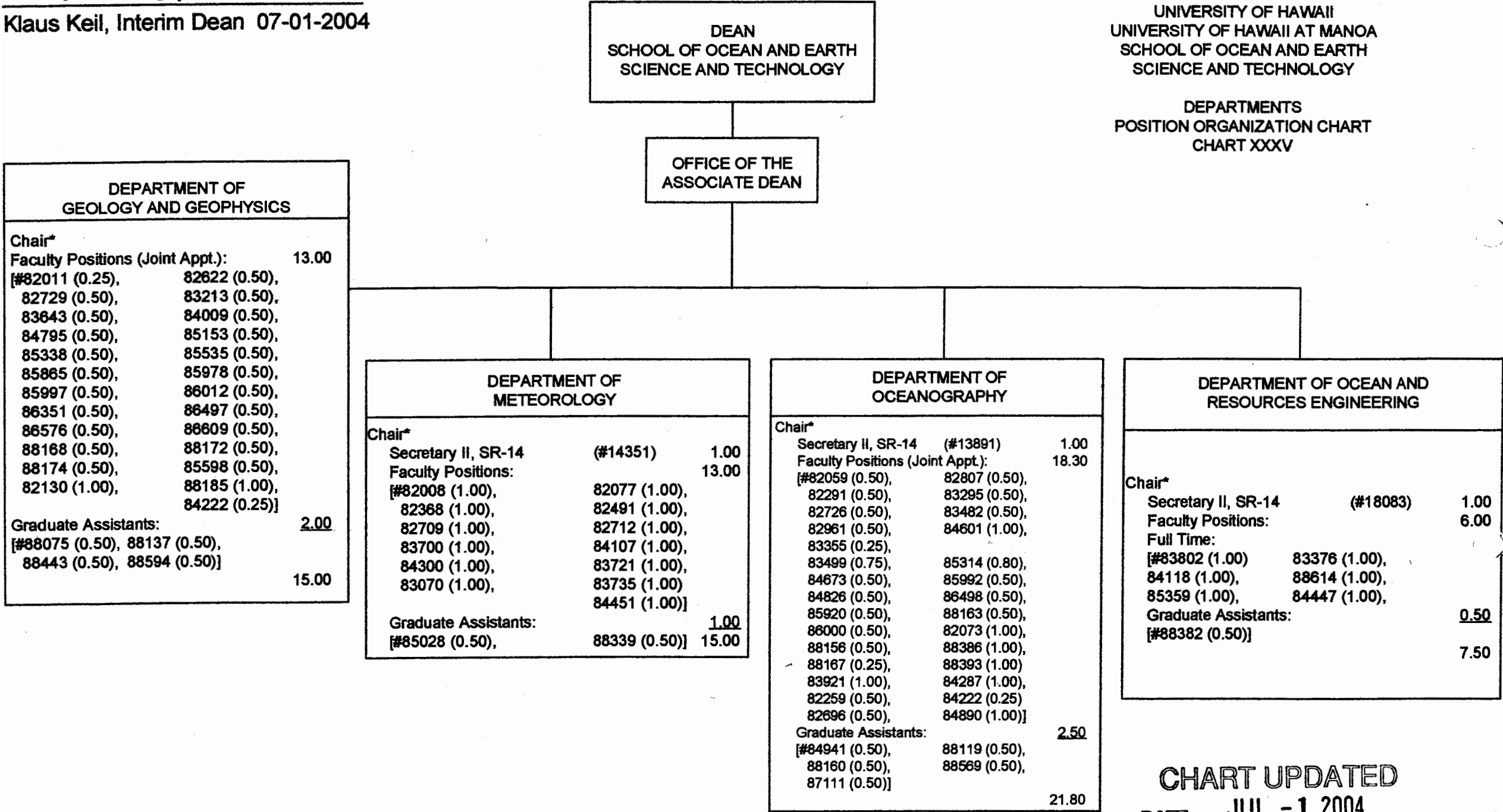


CHART UPDATED

DATE JUL -1 2004

DEAN
SCHOOL OF OCEAN AND EARTH
SCIENCE AND TECHNOLOGY

METEOROLOGY-
PHYSICAL OCEANOGRAPHY

Chair*		
Professor, I5	(#83482)	0.50
Professor, I5-R	(#82696)	0.50
Professor, I5-R	(#85920)	0.50
Assoc. Professor, I4	(#82807)	0.50
Assoc. Professor, I4-R	(#82726)	0.50
Assoc. Professor, I4-R	(#88156)	0.50
Asst. Professor, I3-R	(#84826)	0.50
Assoc. Professor, I4-R	(#83031)	1.00

VOLCANOLOGY-PETROLOGY

Chair*		
Secretary II, SR-14	(#14352)	1.00
MacDonald Prof. of Volcanology, I5-R	(#85535)	0.50
Professor, I5-R	(#85153)	0.50
Asst. Professor, I3	(#88174)	0.50
Assoc. Professor, I4-R	(#82729)	0.50
Assoc. Professor, I4-R	(#84795)	0.50
Professor, I5-R	(#85997)	0.50
Professor, I5-R	(#86012)	0.50
Assoc. Professor, I4-R	(#85978)	0.50

MARINE GEOPHYSICS-
SEISMOLOGY

Chair*		
Secretary II, SR-14	(#14350)	1.00
Professor, I5-R	(#83643)	0.50
Asst. Professor, I3	(#88172)	0.50
Professor, I5-R	(#82011)	0.75
Asst. Professor, I3	(#88168)	0.50
Geophysicist, R5	(#86351)	0.50
Geophysicist, R5	(#86497)	0.50
Professor, I5-R	(#85338)	0.50
Assoc. Professor, I4-R	(#86576)	0.50
Professor, I5-R	(#86609)	0.50
Assoc. Professor, I4-R	(#85865)	0.50
Ed. Spec., PBB	(#80803)	0.50
Asst. Professor, I3	(#84222)	0.25

MARINE GEOLOGY-
GEOCHEMISTRY

Chair*		
Secretary II, SR-14	(#36897)	1.00
Professor, I5-R	(#82622)	0.50
Professor, I5-R	(#86000)	0.50
Professor, I5-R	(#82259)	0.50
Professor, I5-R	(#83295)	0.50
Professor, I5-R	(#86498)	0.50
Professor, I5-R	(#83499)	0.25
Professor, I5	(#82059)	0.50
Researcher, R5	(#84799)	1.00
Asst. Professor, I3	(#84009)	0.50
Researcher, R5	(#85339)	1.00
Specialist, S5	(#88178)	0.75
Assoc. Researcher, R4	(#85992)	0.50
Assoc. Spec., S4	(#88488)	0.75
Secretary II, SR-14	(#51280)	1.00
Asst. Professor, I3	(#84222)	0.25

MARINE BIOLOGY AND
COASTAL ECOSYSTEMS

Chair*		
Affiliate members from Hawaii Institute of Marine Biology		

BIOLOGICAL
OCEANOGRAPHY

Chair*		
Secretary II, SR-14	(#36896)	1.00
Professor, I5	(#84673)	0.50
Professor, I5	(#83355)	0.25
Professor, I5	(#85314)	0.20
Professor, I5-R	(#88167)	0.25
Researcher, R5	(#82800)	1.00
Assoc. Professor, I4-R	(#88163)	0.50
Assoc. Professor, I4-R	(#82961)	0.50
Asst. Professor, I3-R	(#82291)	0.50

ENERGY RESOURCES AND
OCEAN ENGINEERING

Chair*		
Affiliate members from Hawaii Natural Energy Institute		

*Appointed from faculty positions

CHART UPDATED
JUL - 1 2004
DATE

STATE OF HAWAII
UNIVERSITY OF HAWAII
UNIVERSITY OF HAWAII AT MANOA
SCHOOL OF OCEAN AND EARTH
SCIENCE AND TECHNOLOGY

HAWAII INSTITUTE OF MARINE BIOLOGY
POSITION ORGANIZATION CHART

CHART XXXVII

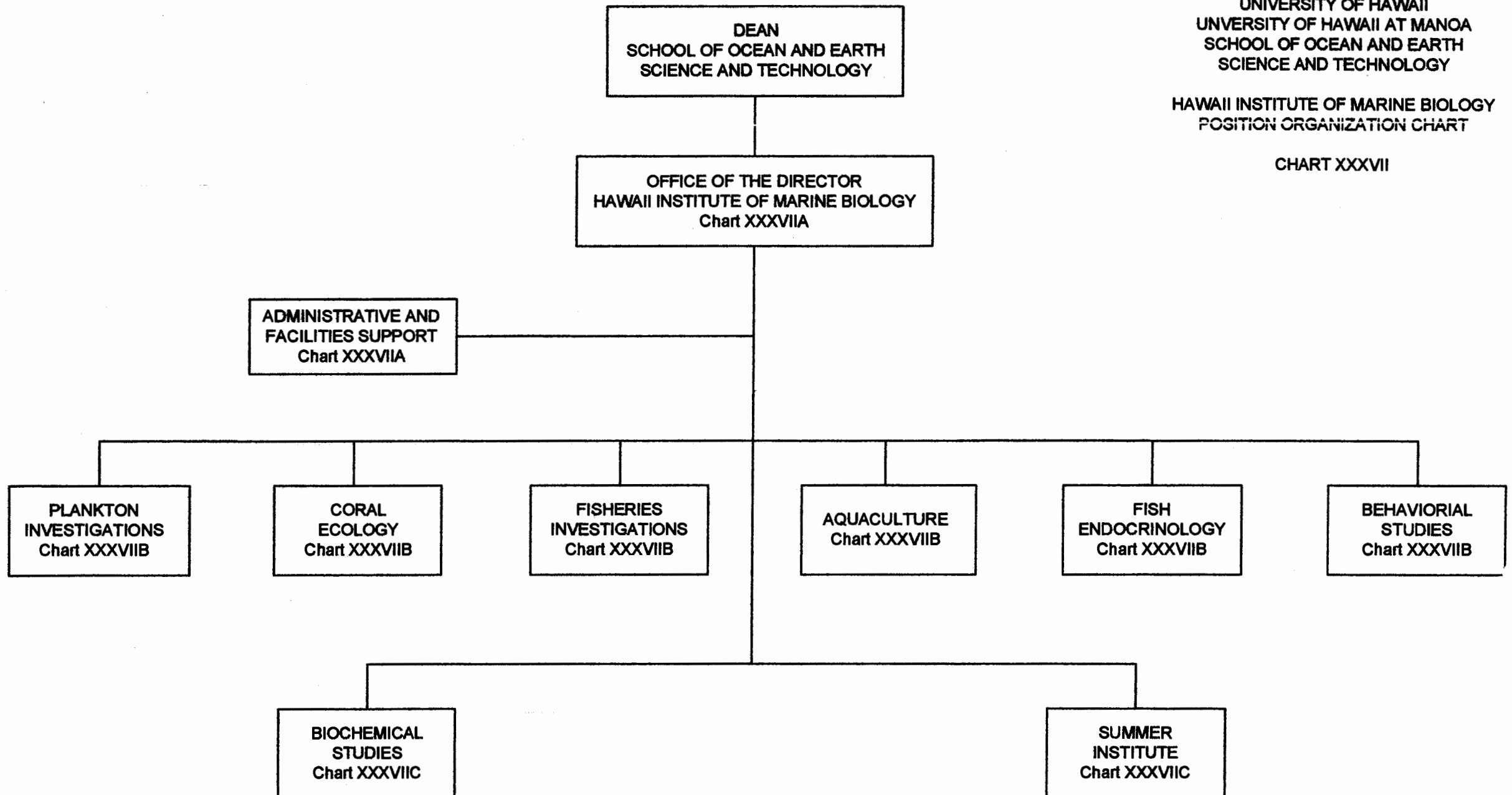


CHART UPDATED

DATE JUL - 1 2004

STATE OF HAWAII
UNIVERSITY OF HAWAII
UNIVERSITY OF HAWAII AT MANOA
SCHOOL OF OCEAN AND EARTH
SCIENCE AND TECHNOLOGY

HAWAII INSTITUTE OF MARINE BIOLOGY
POSITION ORGANIZATION CHART
CHART XXXVIIA

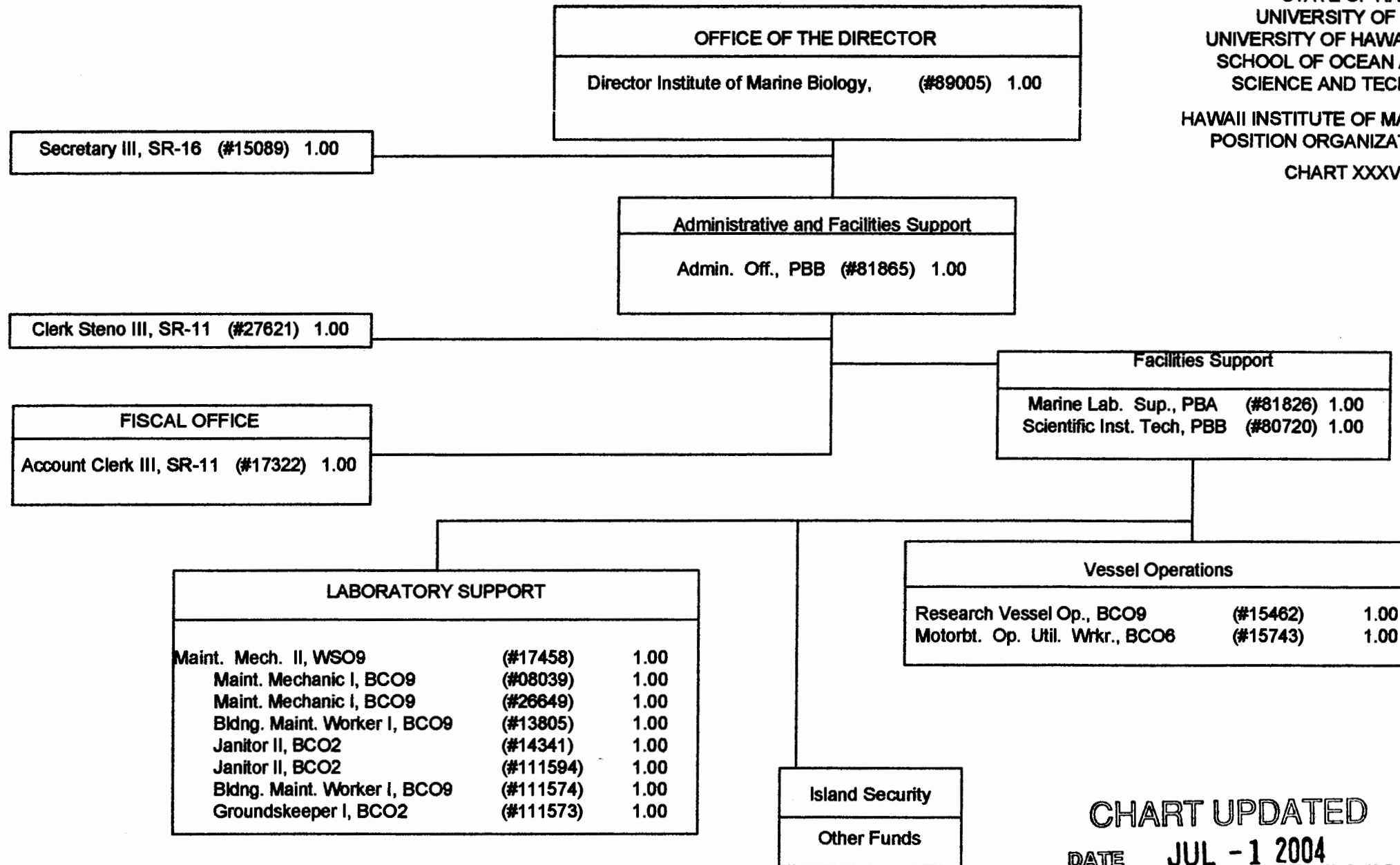
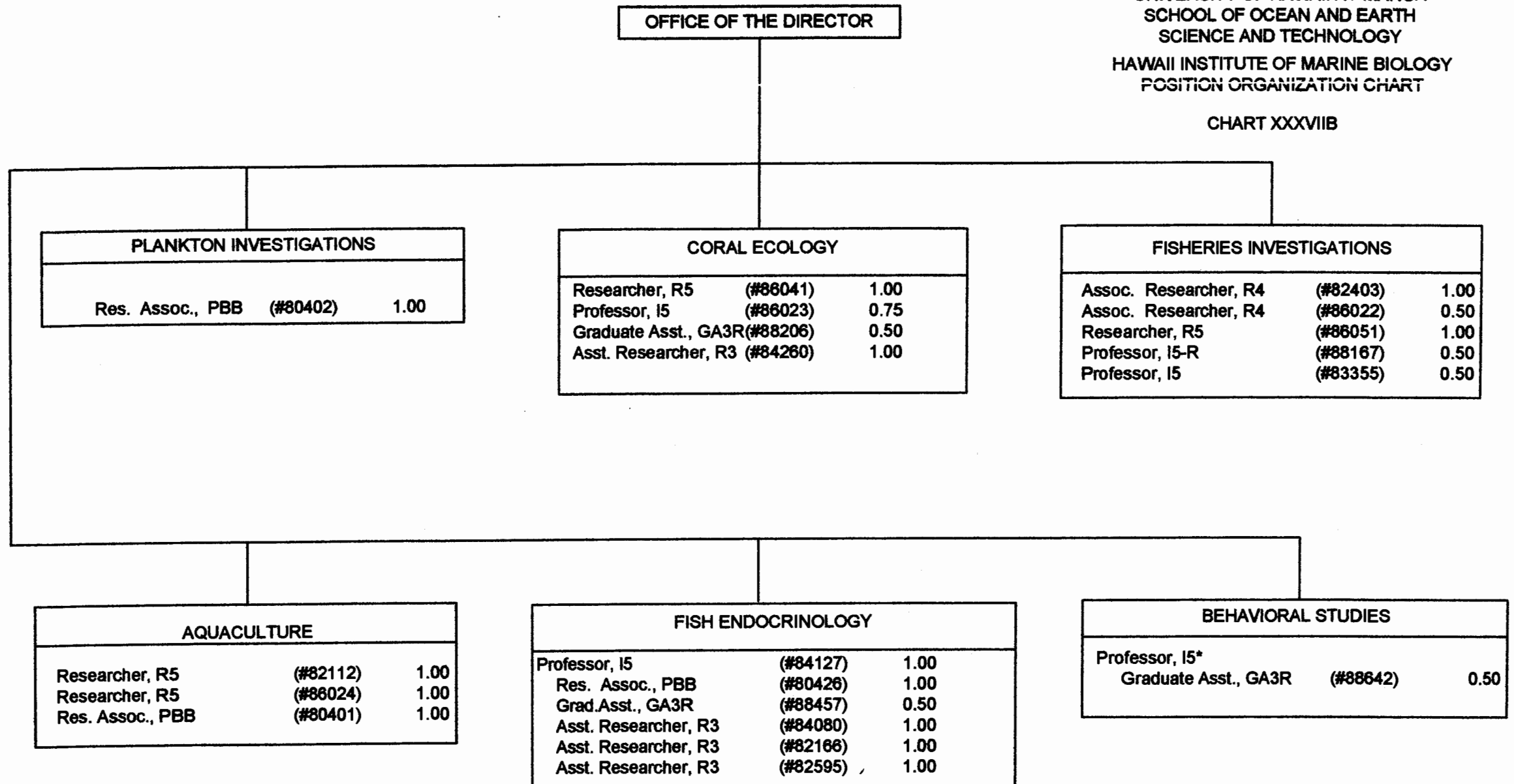


CHART UPDATED
DATE JUL - 1 2004

STATE OF HAWAII
UNIVERSITY OF HAWAII
UNIVERSITY OF HAWAII AT MANOA
SCHOOL OF OCEAN AND EARTH
SCIENCE AND TECHNOLOGY
HAWAII INSTITUTE OF MARINE BIOLOGY
POSITION ORGANIZATION CHART

CHART XXXVIIB



*Position from Zoology

CHART UPDATED
DATE JUL -1 2004

STATE OF HAWAII
UNIVERSITY OF HAWAII
UNIVERSITY OF HAWAII AT MANOA
SCHOOL OF OCEAN AND EARTH
SCIENCE AND TECHNOLOGY

HAWAII INSTITUTE OF MARINE BIOLOGY
POSITION ORGANIZATION CHART

CHART XXXVIIC

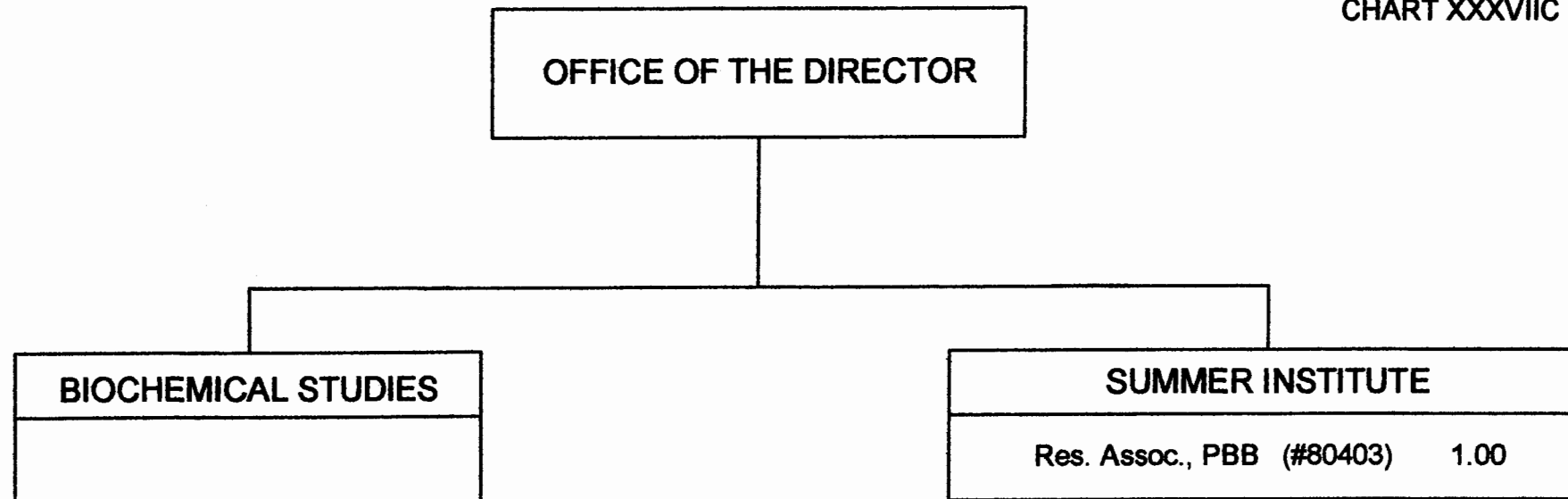


CHART UPDATED
DATE JUL -1 2004

DEAN
SCHOOL OF OCEAN AND EARTH
SCIENCE AND TECHNOLOGY

OFFICE OF THE DIRECTOR
HAWAII INSTITUTE OF GEOPHYSICS
AND PLANETOLOGY

Director, (#89123) 1.00

ADVISORY COUNCIL

Secretary III, SR-16 (#14353) 1.00
Assoc. Director (Faculty, R5 appointed from
research position)

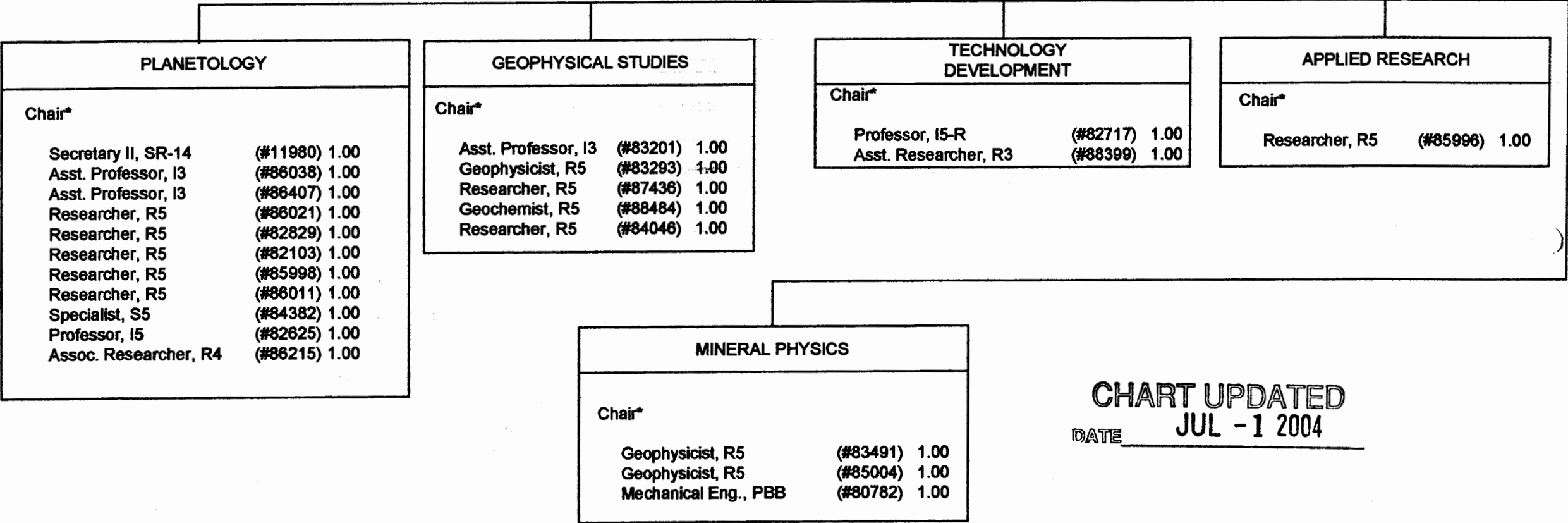


CHART UPDATED
JUL - 1 2004
DATE _____

APPROVED:

Klaus Keil
Klaus Keil, Interim Dean 07-01-2004

STATE OF HAWAII
UNIVERSITY OF HAWAII
UNIVERSITY OF HAWAII AT MANOA
SCHOOL OF OCEAN AND EARTH SCIENCE AND TECHNOLOGY
HAWAII NATURAL ENERGY INSTITUTE

POSTIION ORGANIZATION CHART
CHART XXXIX

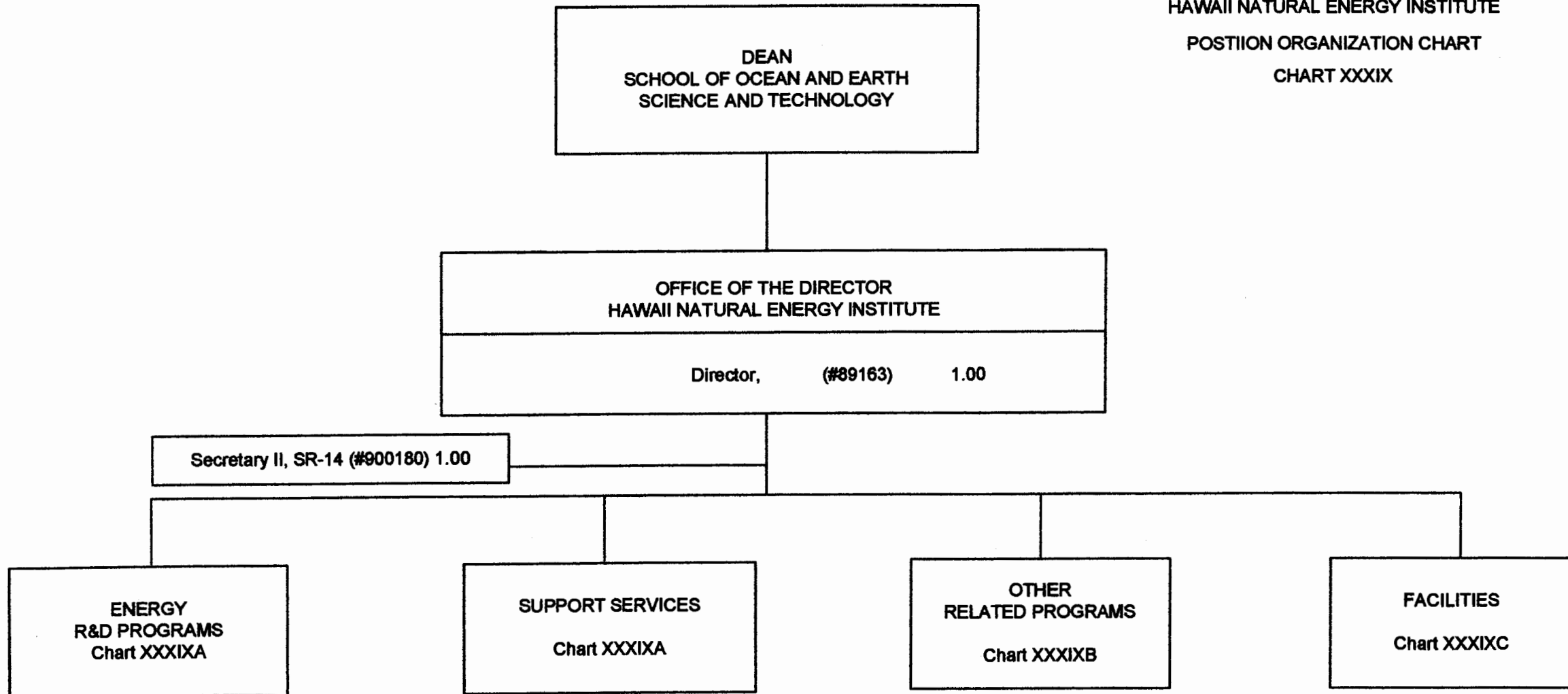


CHART UPDATED
DATE JUL -1 2004

APPROVED:

Klaus Keil
Klaus Keil, Interim Dean 07-01-2004

STATE OF HAWAII
UNIVERSITY OF HAWAII
UNIVERSITY OF HAWAII AT MANOA
SCHOOL OF OCEAN AND EARTH SCIENCE AND TECHNOLOGY
HAWAII NATURAL ENERGY INSTITUTE

POSITION ORGANIZATION CHART

CHART XXXIXA

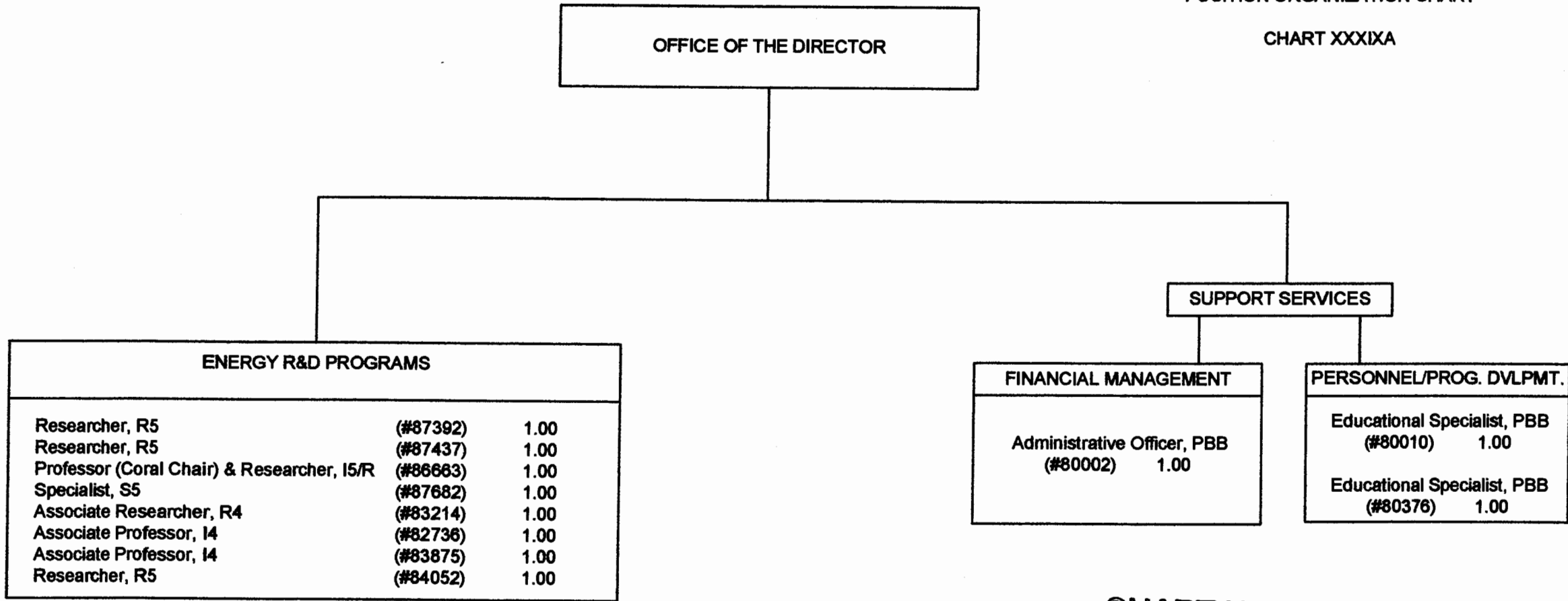


CHART UPDATED
DATE JUL - 1 2004

STATE OF HAWAII
UNIVERSITY OF HAWAII
UNIVERSITY OF HAWAII AT MANOA
SCHOOL OF OCEAN AND EARTH SCIENCE AND TECHNOLOGY
HAWAII NATURAL ENERGY INSTITUTE

POSITION ORGANIZATION CHART

CHART XXXIXB

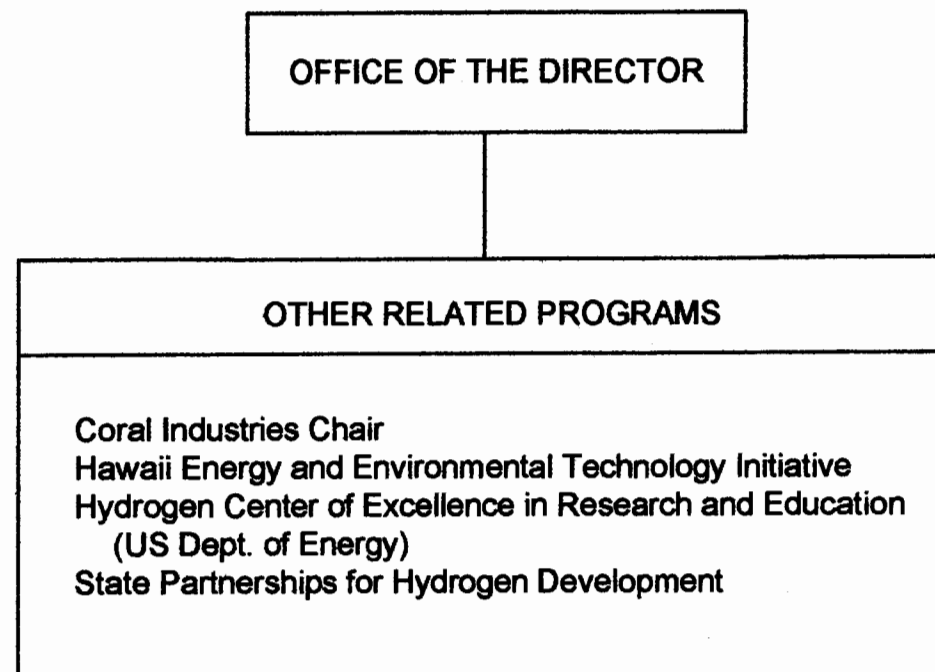


CHART UPDATED
DATE JUL -1 2004

STATE OF HAWAII
UNIVERSITY OF HAWAII
UNIVERSITY OF HAWAII AT MANOA
SCHOOL OF OCEAN AND EARTH SCIENCE AND TECHNOLOGY
HAWAII NATURAL ENERGY INSTITUTE

POSITION ORGANIZATION CHART

CHART XXXIXC

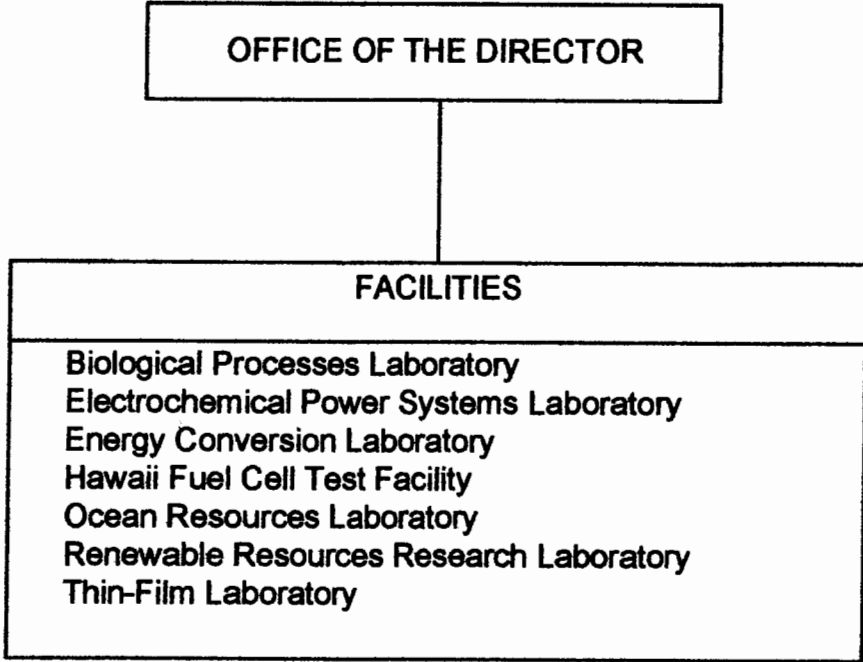


CHART UPDATED
DATE JUL - 1 2004

STATE OF HAWAII
UNIVERSITY OF HAWAII
UNIVERSITY OF HAWAII AT MANOA
SCHOOL OF OCEAN AND EARTH
SCIENCE AND TECHNOLOGY

SEA GRANT COLLEGE PROGRAM
ORGANIZATION CHART

CHART XL

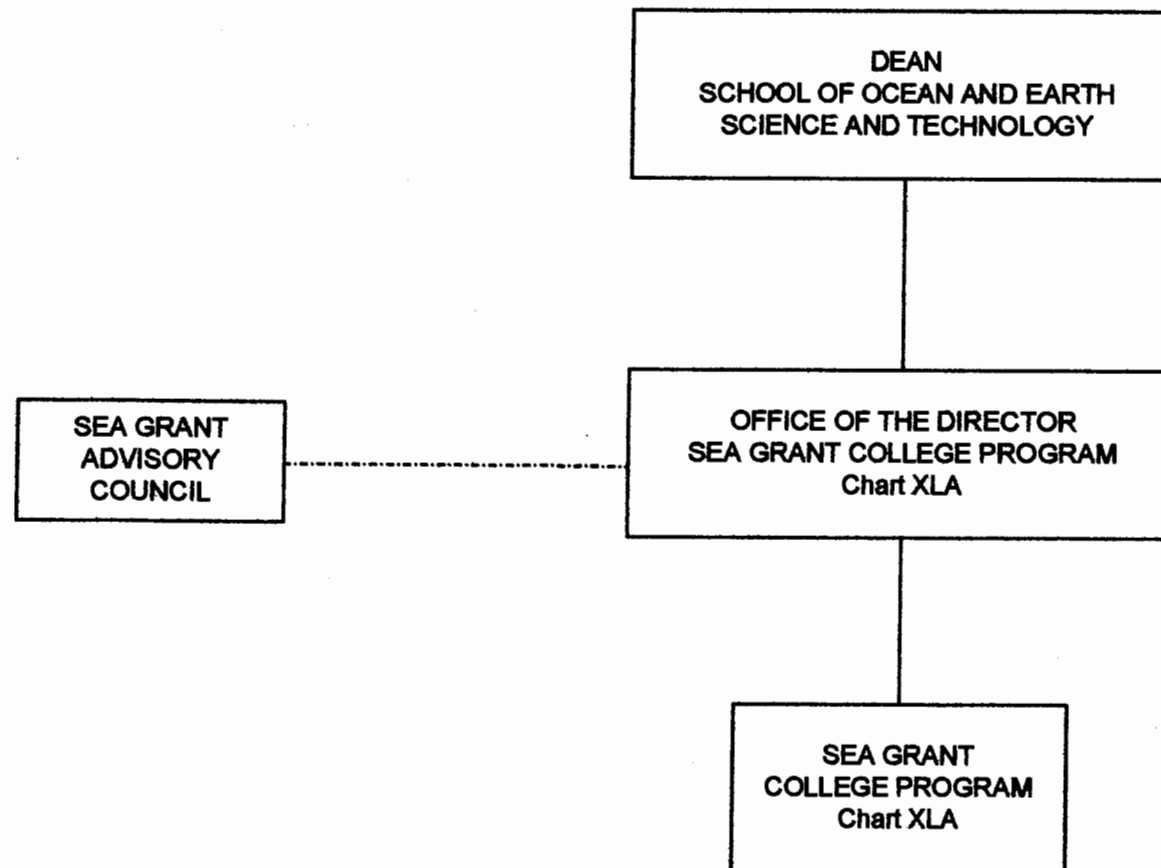
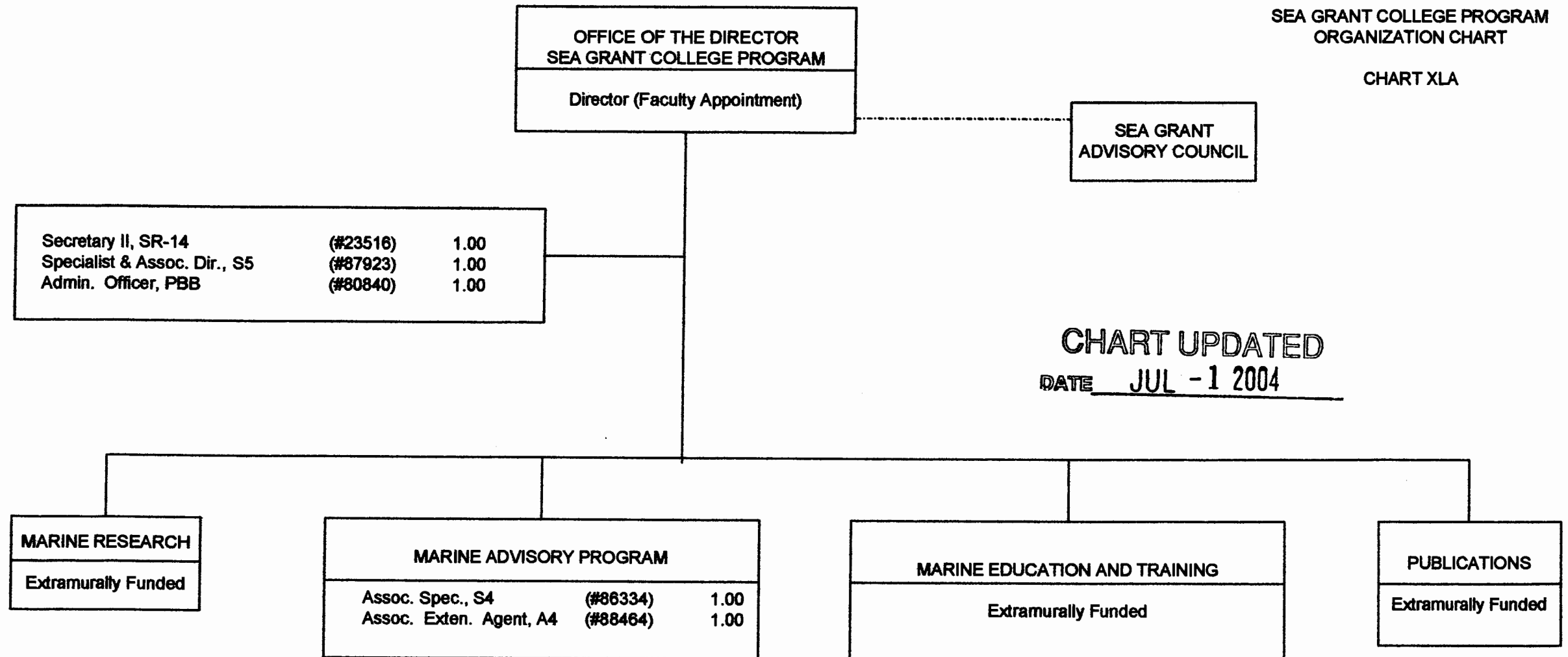


CHART UPDATED
DATE JUL - 1 2004

STATE OF HAWAII
UNIVERSITY OF HAWAII
UNIVERSITY OF HAWAII AT MANOA
SCHOOL OF OCEAN AND EARTH
SCIENCE AND TECHNOLOGY

SEA GRANT COLLEGE PROGRAM
ORGANIZATION CHART

CHART XLA



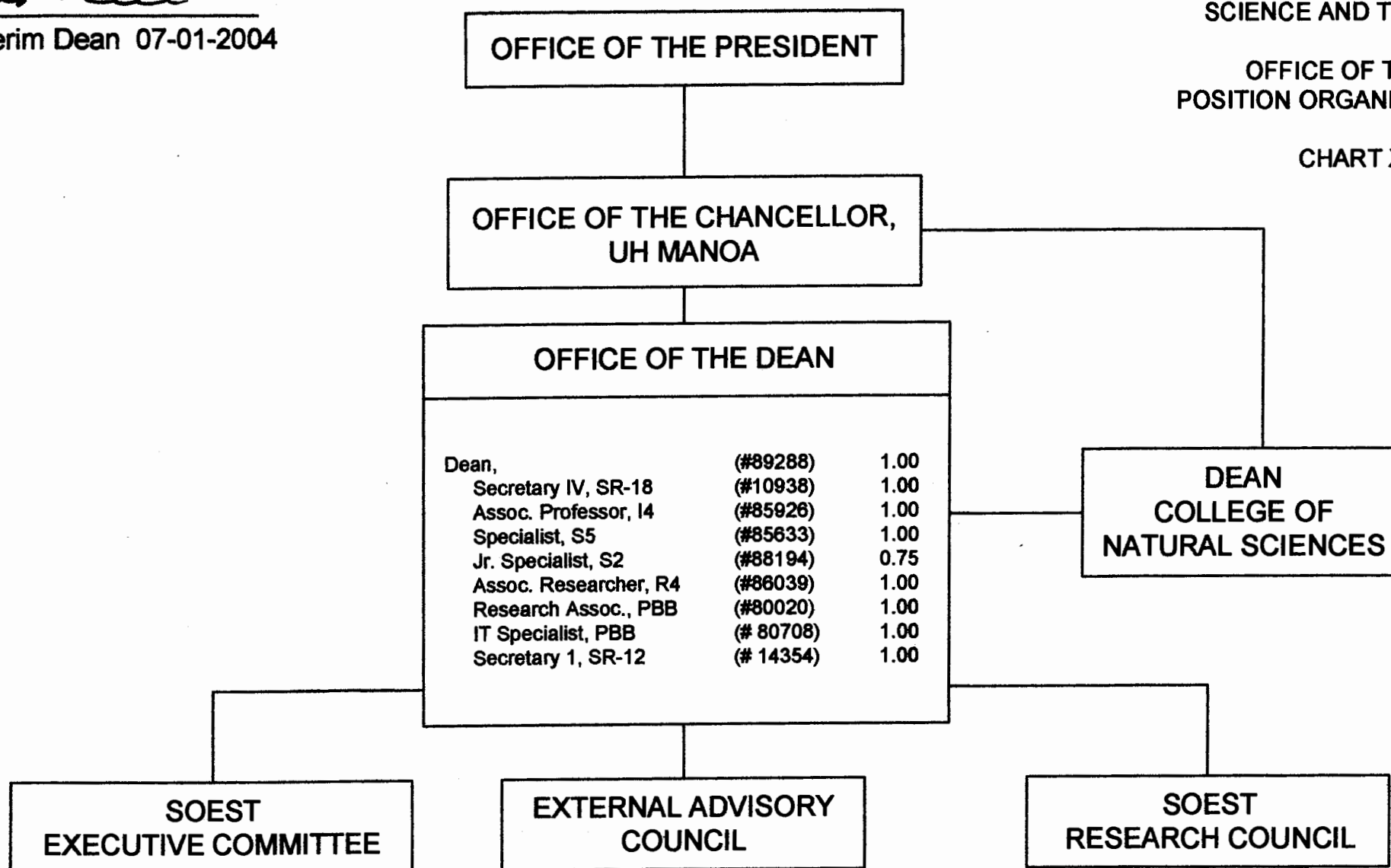
APPROVED:

Klaus Keil
Klaus Keil, Interim Dean 07-01-2004

STATE OF HAWAII
UNIVERSITY OF HAWAII
UNIVERSITY OF HAWAII AT MANOA
SCHOOL OF OCEAN AND EARTH
SCIENCE AND TECHNOLOGY

OFFICE OF THE DEAN
POSITION ORGANIZATION CHART

CHART XXXII



SUPERSEDED

Date FEB 17 2005

CHART UPDATED

DATE JUL - 1 2004

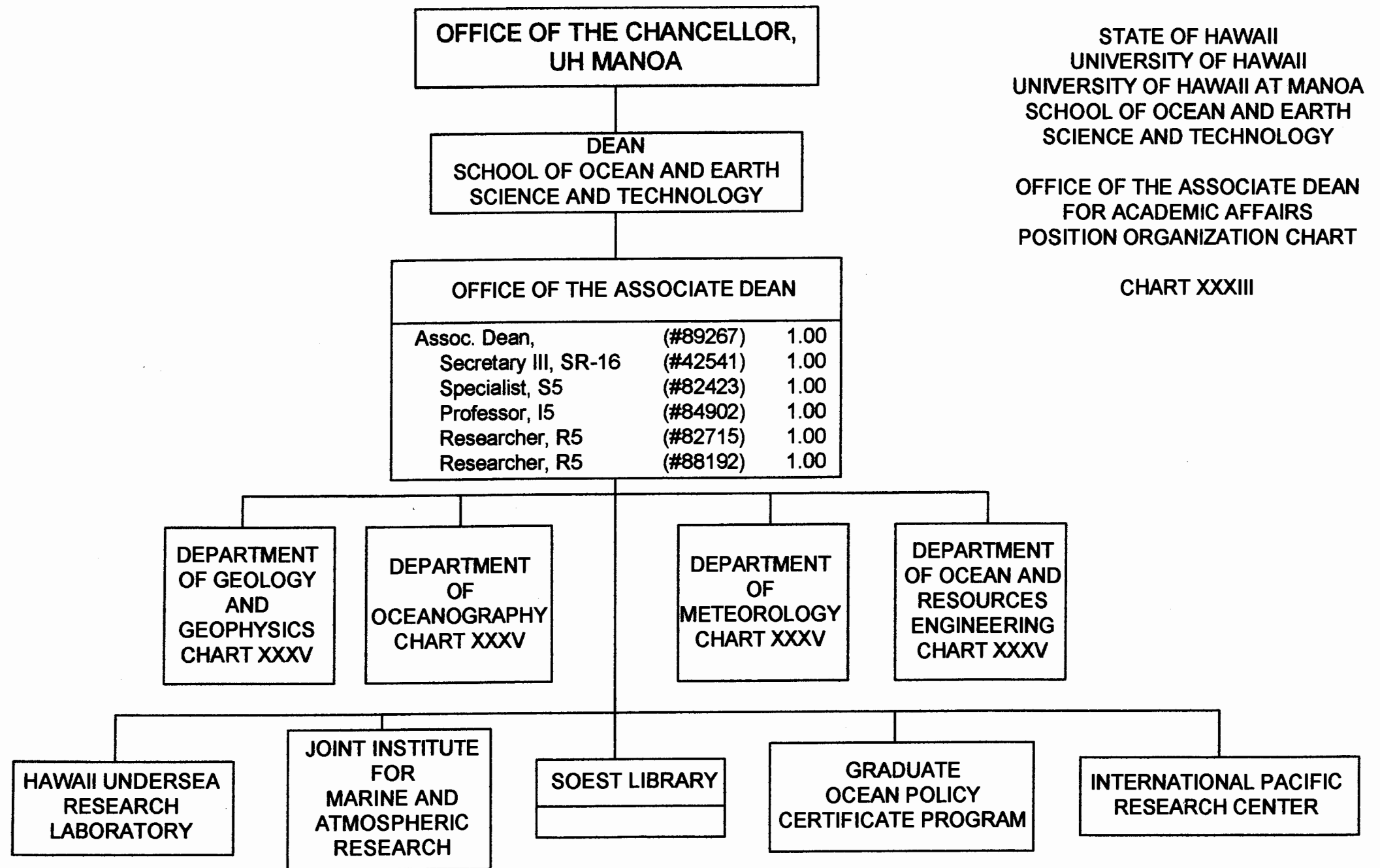


CHART XXXIII

CHART UPDATED
DATE JUL - 1 2004

~~SUPERSEDED~~
Date FEB 17 2005