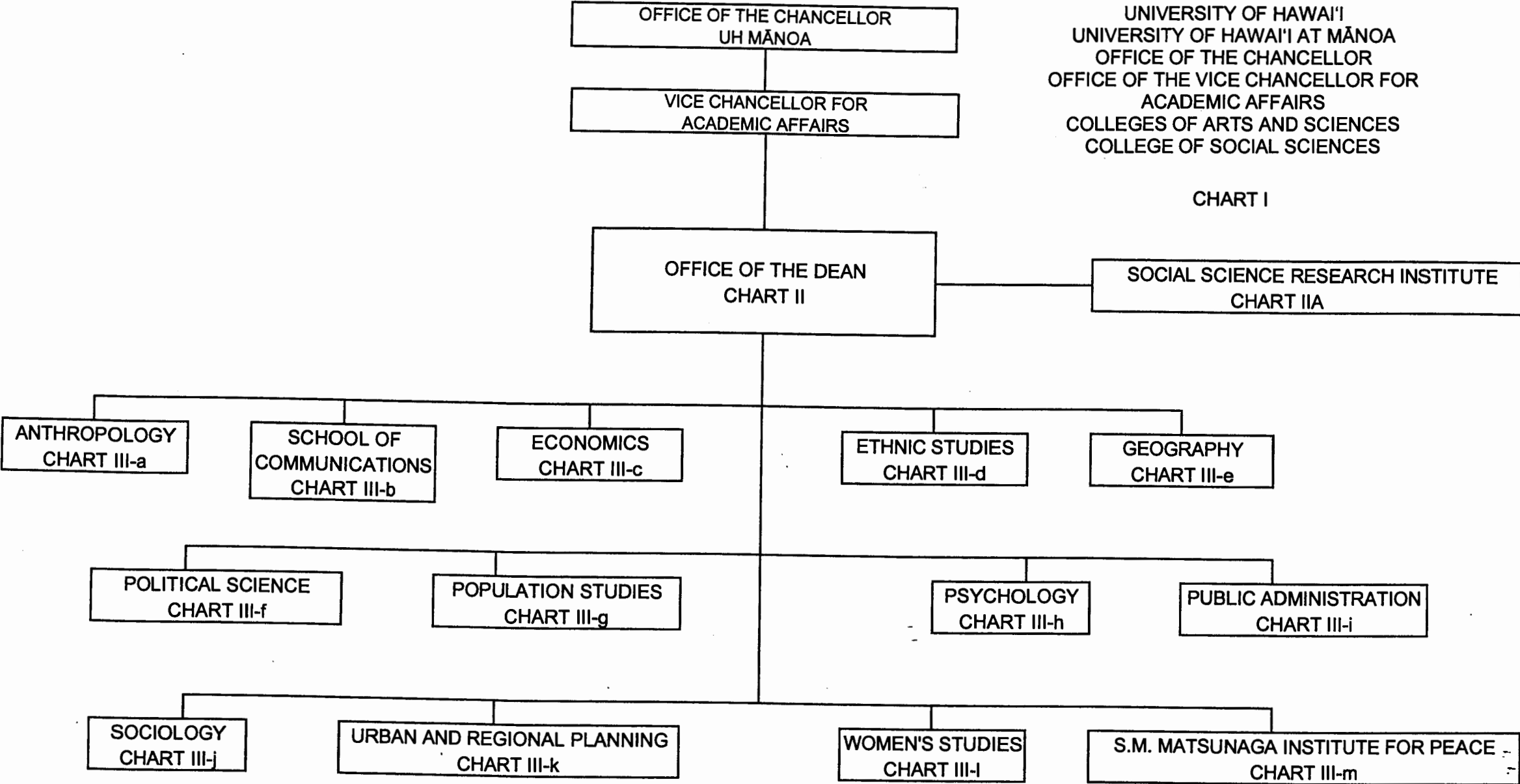


STATE OF HAWAI'I  
UNIVERSITY OF HAWAI'I  
UNIVERSITY OF HAWAI'I AT MĀNOA  
OFFICE OF THE CHANCELLOR  
OFFICE OF THE VICE CHANCELLOR FOR  
ACADEMIC AFFAIRS  
COLLEGES OF ARTS AND SCIENCES  
COLLEGE OF SOCIAL SCIENCES

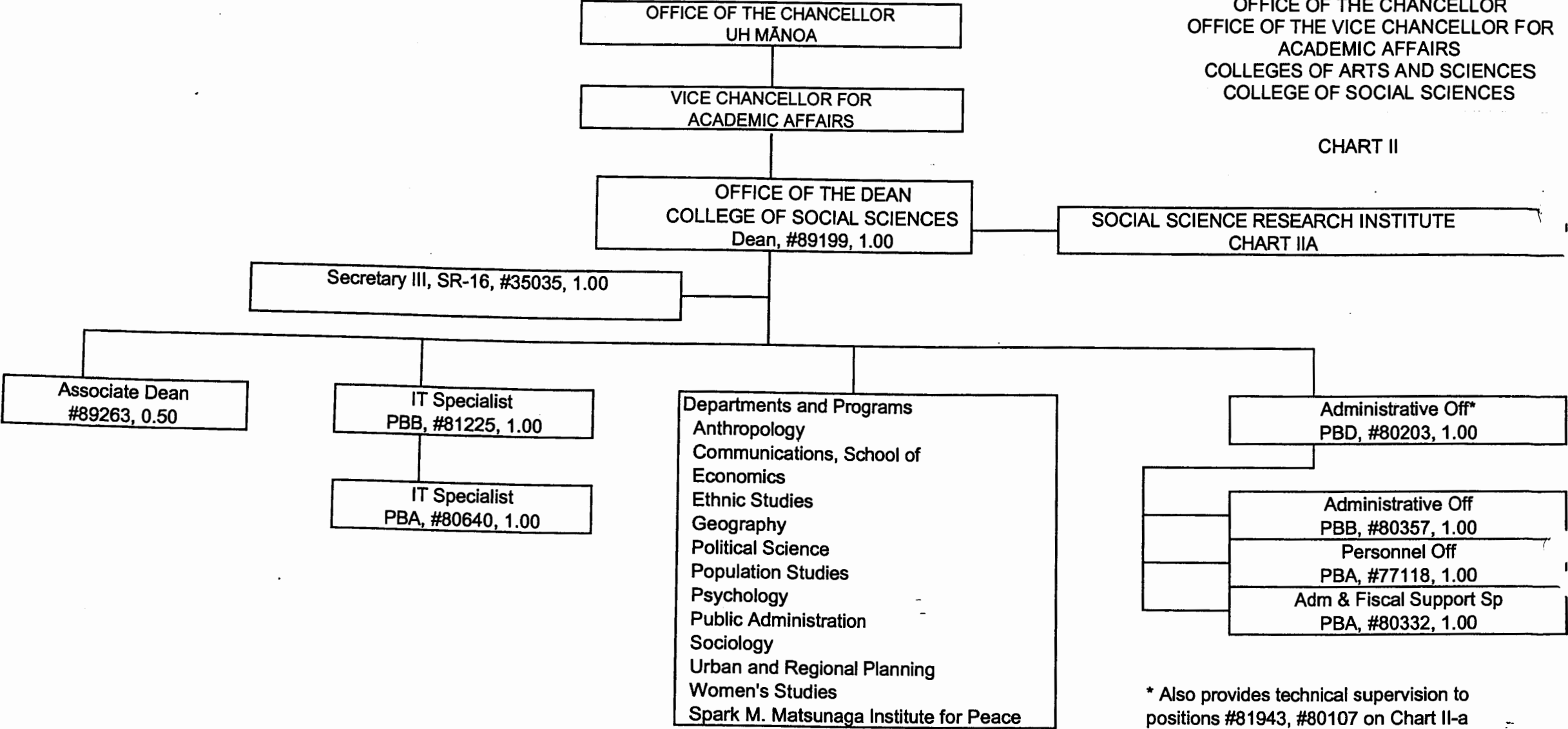
CHART I



FEB 17 2005

STATE OF HAWAII  
UNIVERSITY OF HAWAII  
UNIVERSITY OF HAWAII AT MĀNOA  
OFFICE OF THE CHANCELLOR  
OFFICE OF THE VICE CHANCELLOR FOR  
ACADEMIC AFFAIRS  
COLLEGES OF ARTS AND SCIENCES  
COLLEGE OF SOCIAL SCIENCES

CHART II



FEB 17 2005

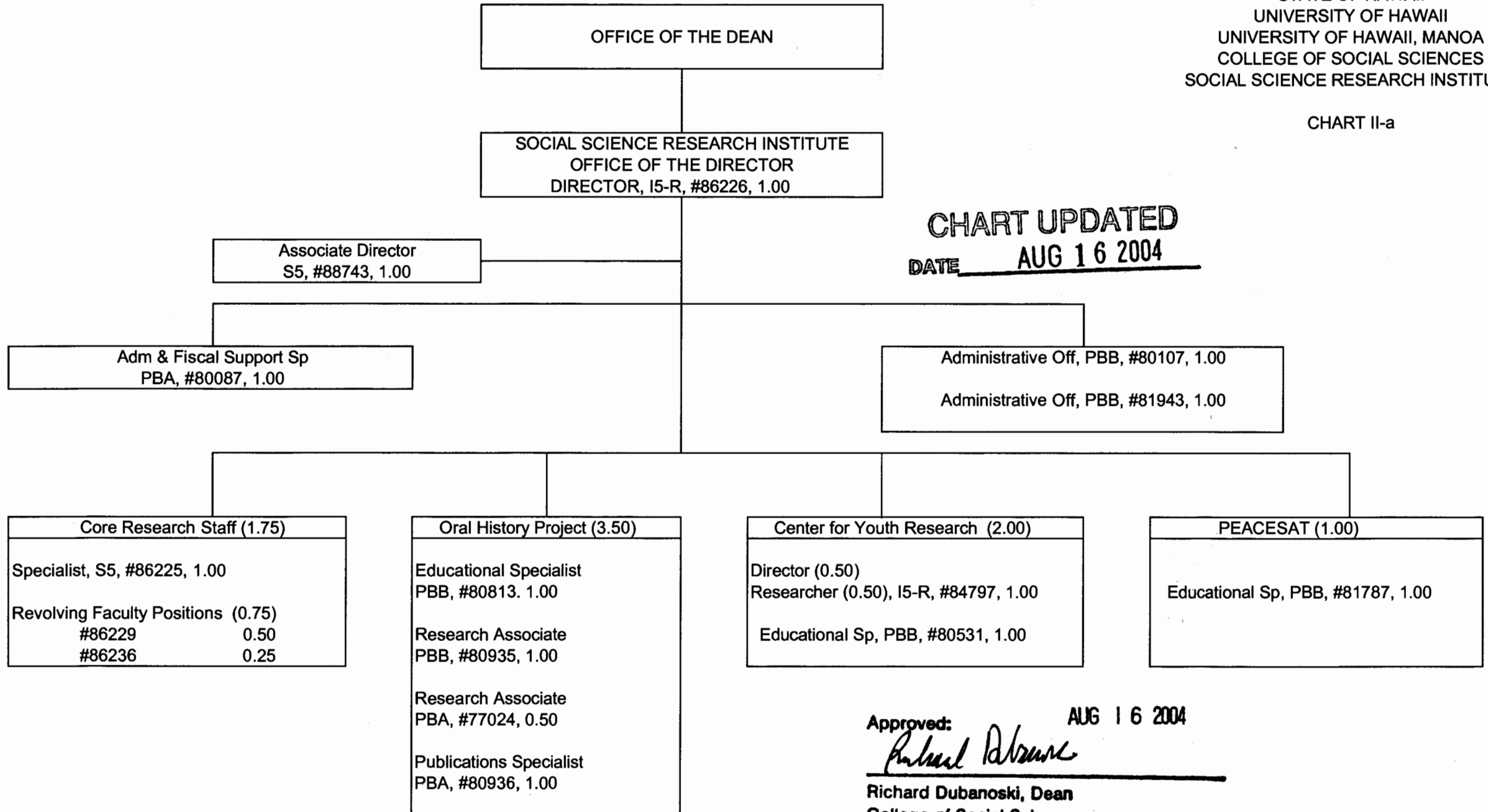
General Funds

8.50

STATE OF HAWAII  
UNIVERSITY OF HAWAII  
UNIVERSITY OF HAWAII, MANOA  
COLLEGE OF SOCIAL SCIENCES  
SOCIAL SCIENCE RESEARCH INSTITUTE

CHART II-a

CHART UPDATED  
DATE AUG 16 2004



OFFICE OF THE DEAN

STATE OF HAWAII  
UNIVERSITY OF HAWAII  
UNIVERSITY OF HAWAII AT MANOA  
COLLEGES OF ARTS AND SCIENCES  
COLLEGE OF SOCIAL SCIENCES  
DEPARTMENT OF ANTHROPOLOGY

POSITION ORGANIZATION CHART

CHART III-a

DEPARTMENT OF ANTHROPOLOGY					
Chair (appointed from faculty positions)					
Secretary II, SR-14, #13482					1.00
Educational Sp, PBA, #80639					1.00
Educational Sp, PBB, #81746					1.00
Faculty Positions:					17.00
<u>Full time:</u> #82188, 82195, 82534, 82779, 82797,					
83004, 83358, 83405, 83574, 83720,					
83756, 83924, 84206, 84399, 85082					
 <u>Part time:</u> #84921 (.50), 88154 (.50), 82638 (.50), 84901 (.50)					
Graduate Assistants:					3.00
#83831, 83275, 88064, 88367					
88529, 88591					
					-----
					23.00

CHART UPDATED

DATE JUL 01 2004

Approved: AUG 16 2004

*Richard Dubanoski*

Richard Dubanoski, Dean  
College of Social Sciences

General Funds 23.00

OFFICE OF THE DEAN

STATE OF HAWAII  
UNIVERSITY OF HAWAII  
UNIVERSITY OF HAWAII AT MANOA  
COLLEGES OF ARTS AND SCIENCES  
COLLEGE OF SOCIAL SCIENCES  
DEPARTMENT OF COMMUNICATIONS

POSITION ORGANIZATION CHART

CHART III-b

SCHOOL OF COMMUNICATIONS					
Chair (appointed from faculty positions)					
Secretary II, SR-14, #13807					1.00
Clerk-Typist II, SR-08, #48445					1.00
Educational Sp, PBB, #83164					1.00
Faculty Positions:					16.00
<u>Full time:</u>	#82279,	82280,	82500,	82602,	82611,
	82871,	82946,	82982,	83302,	84115,
	84217,	84478,	84505,	84792,	88169,
	88619				
Graduate Assistants:					3.50
	#85507,	88210,	88506,	88534,	88581
	88607,	88681			
					----- 22.50

CHART UPDATED  
DATE JUL 01 2004

Approved: AUG 16 2004

*Richard Dubanoski*

Richard Dubanoski, Dean  
College of Social Sciences

General Funds 22.50

OFFICE OF THE DEAN

STATE OF HAWAII  
UNIVERSITY OF HAWAII  
UNIVERSITY OF HAWAII AT MANOA  
COLLEGES OF ARTS AND SCIENCES  
COLLEGE OF SOCIAL SCIENCES  
DEPARTMENT OF ECONOMICS

POSITION ORGANIZATION CHART

CHART III-c

DEPARTMENT OF ECONOMICS					
Chair (appointed from faculty positions)					
Secretary II, SR-14, #14362					1.00
Clerk-Typist II, SR-10, #14360					1.00
Faculty Positions:					17.00
<u>Full time:</u>	#82192,	82286,	82679,	82777,	82838,
	83023,	83411,	83484,	83611,	83748,
	83943,	84047,	84054,	84643,	84815,
	85027				
<u>Part time:</u>	#83650 (.50), 84810 (.50)				
Graduate Assistants:					4.50
	#88061,	88175,	88193,	88233,	88248
	88262,	88420,	88517,	88631	
					----- 23.50

CHART UPDATED

DATE JUL 01 2004

Approved: AUG 16 2004

*Richard Dubanoski*

Richard Dubanoski, Dean  
College of Social Sciences

General Funds 23.50

OFFICE OF THE DEAN

STATE OF HAWAII  
UNIVERSITY OF HAWAII  
UNIVERSITY OF HAWAII AT MANOA  
COLLEGES OF ARTS AND SCIENCES  
COLLEGE OF SOCIAL SCIENCES  
DEPARTMENT OF ETHNIC STUDIES

POSITION ORGANIZATION CHART

CHART III-d

DEPARTMENT OF ETHNIC STUDIES

Chair (appointed from faculty positions)

Secretary II, SR-14, #24006

1.00

Faculty Positions:

Full time: #83195, 84790, 84801, 84803, 84805,  
84813, 85586

7.50

Part time: #84807 (.50)

-----  
8.50

CHART UPDATED

DATE JUL 01 2004

Approved: AUG 16 2004

*Richard Dubanoski*

Richard Dubanoski, Dean  
College of Social Sciences

General Funds 8.50

OFFICE OF THE DEAN

STATE OF HAWAII  
UNIVERSITY OF HAWAII  
UNIVERSITY OF HAWAII AT MANOA  
COLLEGES OF ARTS AND SCIENCES  
COLLEGE OF SOCIAL SCIENCES  
DEPARTMENT OF GEOGRAPHY

POSITION ORGANIZATION CHART

CHART III-e

DEPARTMENT OF GEOGRAPHY					
Chair (appointed from faculty positions)					
Secretary II, SR-14, #14358					1.00
Clerk-Typist II, SR-08, #18580					1.00
Educational Sp, PBB, #80641					1.00
Faculty Positions:					15.50
<u>Full time:</u> #82328, 82332, 82680, 82681, 82708,					
83935, 84209, 84254, 84518, 84565,					
84791, 84841, 84868 84917, 85298					
<u>Part time:</u> #82338 (.50)					
Graduate Assistants:					6.00
#88065, 88103, 88110, 88140, 88189					
88217, 88232, 88391, 88416, 88446					
84864, 88620					
					-----
					24.50

CHART UPDATED  
DATE JUL 01 2004

Approved: AUG 16 2004

*Richard Dubanoski*

Richard Dubanoski, Dean  
College of Social Sciences

General Funds 24.50



OFFICE OF THE DEAN

STATE OF HAWAII  
UNIVERSITY OF HAWAII  
UNIVERSITY OF HAWAII AT MANOA  
COLLEGES OF ARTS AND SCIENCES  
COLLEGE OF SOCIAL SCIENCES  
DEPARTMENT OF POLITICAL SCIENCE

POSITION ORGANIZATION CHART

CHART III-f

DEPARTMENT OF POLITICAL SCIENCE					
Chair (appointed from faculty positions)					
Secretary II, SR-14, #11112					1.00
Clerk-Stenographer II, SR-09, #14363					1.00
Adm & Fiscal Support Sp, PBA, #77635					1.00
Faculty Positions:					22.50
Full time:	#82145,	82278,	82317,	82913,	83085,
	83194,	83311,	83370,	83621,	83753,
	83778,	83858,	84023,	84042,	84059,
	84109,	84130,	84234,	84556,	84800,
	84812				
Part time:	#82823 (.50), 83277 (.50), 88549 (.50)				
Graduate Assistants:					3.50
	#88076,	88090,	88238,	88336,	88407
	88676,	84880			
					----- 29.00

CHART UPDATED

DATE JUL 01 2004

Approved: AUG 16 2004

*Richard Dubanoski*

Richard Dubanoski, Dean  
College of Social Sciences

General Funds 29.00

OFFICE OF THE DEAN

STATE OF HAWAII  
UNIVERSITY OF HAWAII  
UNIVERSITY OF HAWAII AT MANOA  
COLLEGES OF ARTS AND SCIENCES  
COLLEGE OF SOCIAL SCIENCES  
POPULATION STUDIES PROGRAM

POSITION ORGANIZATION CHART

CHART III-g

POPULATION STUDIES PROGRAM	
Director (appointed from faculty positions)	0.00
Faculty Position	0.50
<u>Part Time:</u> #84816 (.50)	
	-----
	0.50

CHART UPDATED

DATE   JUL 01 2004  

Approved:   AUG 16 2004  

*Richard Dubanoski*

Richard Dubanoski, Dean  
College of Social Sciences

General Funds   0.50

OFFICE OF THE DEAN

STATE OF HAWAII  
UNIVERSITY OF HAWAII  
UNIVERSITY OF HAWAII AT MANOA  
COLLEGES OF ARTS AND SCIENCES  
COLLEGE OF SOCIAL SCIENCES  
DEPARTMENT OF PSYCHOLOGY

POSITION ORGANIZATION CHARTS

CHART III-h

DEPARTMENT OF PSYCHOLOGY

Chair (appointed from faculty positions)

Director, Clinical Studies (appointed from faculty positions)

Secretary II, SR-14, #12856	1.00
Clerk-Stenographer III, SR-11, #19052	1.00
Educational Sp, PBB, #80638	1.00

Faculty Positions: 28.75

Full time:

#82114,	82198,	82294,	82398,	82412,
82471,	82537,	82564,	82615,	82629,
82916,	83016,	83092,	83110,	83458,
83507,	83626,	84131,	84346,	84416,
84491,	84497,	84827,	84866,	85075,
85450,	85881,	88005		

Part time: #84319 (0.75)

Graduate Assistants:	4.00			
#85148,	88046,	88060,	88252,	88320
88362,	88511,	88559		

-----  
35.75

CHART UPDATED

DATE JUL 01 2004

Approved: AUG 16 2004

*Richard Dubanoski*

Richard Dubanoski, Dean  
College of Social Sciences

General Funds 35.75

OFFICE OF THE DEAN

STATE OF HAWAII  
UNIVERSITY OF HAWAII  
UNIVERSITY OF HAWAII AT MANOA  
COLLEGES OF ARTS AND SCIENCES  
COLLEGE OF SOCIAL SCIENCES  
PUBLIC ADMINISTRATION PROGRAM

POSITION ORGANIZATION CHART

Chart III-i

PUBLIC ADMINISTRATION PROGRAM

Director (appointed from faculty positions)

Faculty Positions:

4.00

Full time: #82905, 83162, 83178, 84798

-----  
4.00

CHART UPDATED

DATE JUL 01 2004

Approved: AUG 16, 2004

*Richard Dubanoski*

Richard Dubanoski, Dean  
College of Social Sciences

General Funds 4.00

OFFICE OF THE DEAN

STATE OF HAWAII  
UNIVERSITY OF HAWAII  
UNIVERSITY OF HAWAII AT MANOA  
COLLEGES OF ARTS AND SCIENCES  
COLLEGE OF SOCIAL SCIENCES  
DEPARTMENT OF SOCIOLOGY


POSITION ORGANIZATION CHART

CHART III-j

DEPARTMENT OF SOCIOLOGY					
Chair (appointed from faculty positions)					
Secretary II, SR-14, #13485					1.00
Adm & Fiscal Support Sp, PBA, #77562					1.00
Faculty Positions:					19.00
<u>Full time:</u> #82097, 82125, 82204, 82207, 82323,					
82605, 83050, 83713, 84076, 84121,					
84237, 84286, 84456, 84502, 84504,					
84575, 84616, 84642, 85806					
Graduate Assistants:					5.50
#88008, 88100, 88182, 88208, 88268					
88408, 88485, 88498, 88533, 88616					
88392					
					26.50

CHART UPDATED

DATE JUL 01 2004

Approved: AUG 16 2004  


Richard Dubanoski, Dean  
College of Social Sciences

General Funds 26.50

OFFICE OF THE DEAN

STATE OF HAWAII  
UNIVERSITY OF HAWAII  
UNIVERSITY OF HAWAII AT MANOA  
COLLEGES OF ARTS AND SCIENCES  
COLLEGE OF SOCIAL SCIENCES  
DEPARTMENT OF URBAN AND REGIONAL PLANNING

POSITION ORGANIZATION CHART

CHART III-k

DEPARTMENT OF URBAN AND REGIONAL PLANNING		
Chair (appointed from faculty positions)		
Secretary II, SR-14, #15640		1.00
Faculty Positions:		7.50
<u>Full time:</u> #82377, 82539, 83624, 84060, 84351, 84522, 85736		
<u>Part time:</u> #84811 (.50)		
		----- 8.50

CHART UPDATED  
JUL 01 2004  
DATE \_\_\_\_\_

Approved: AUG 16 2004

*Richard Dubanoski*

Richard Dubanoski, Dean  
College of Social Sciences

General Funds 8.50

OFFICE OF THE DEAN

STATE OF HAWAII  
UNIVERSITY OF HAWAII  
UNIVERSITY OF HAWAII AT MANOA  
COLLEGES OF ARTS AND SCIENCES  
COLLEGE OF SOCIAL SCIENCES  
WOMEN'S STUDIES PROGRAM

POSITION ORGANIZATION CHART

CHART III-I

WOMEN'S STUDIES PROGRAM	
Director (appointed from faculty positions)	
Secretary II, SR-14, #31328	1.00
Faculty Positions:	6.00
<u>Full time:</u> #82870,   84200,   84804,   84817,   86071	
<u>Part time:</u> #84057 (.50),   #85962 (.50)	
	----- 7.00

CHART UPDATED

DATE JUL 01 2004

Approved: AUG 16 2004

*Richard Dubanoski*

Richard Dubanoski, Dean  
College of Social Sciences

General Funds   7.00

OFFICE OF THE DEAN

STATE OF HAWAII  
UNIVERSITY OF HAWAII  
UNIVERSITY OF HAWAII AT MANOA  
COLLEGES OF ARTS AND SCIENCES  
COLLEGE OF SOCIAL SCIENCES  
SPARK M. MATSUNAGA INSTITUTE FOR PEACE

POSITION ORGANIZATION CHART

CHART III-m

SPARK M. MATSUNAGA INSTITUTE FOR PEACE		
Director (appointed from faculty positions)		
Adm & Fiscal Support Sp, PBA, #77465		1.00
Educational Sp, PBB, #80358		1.00
Faculty Positions:		3.50
<u>Full time:</u> #88092,   88112,   88732		
<u>Part time:</u> #88113 (.50)		
		-----
		5.50

CHART UPDATED

DATE JUL 01 2004

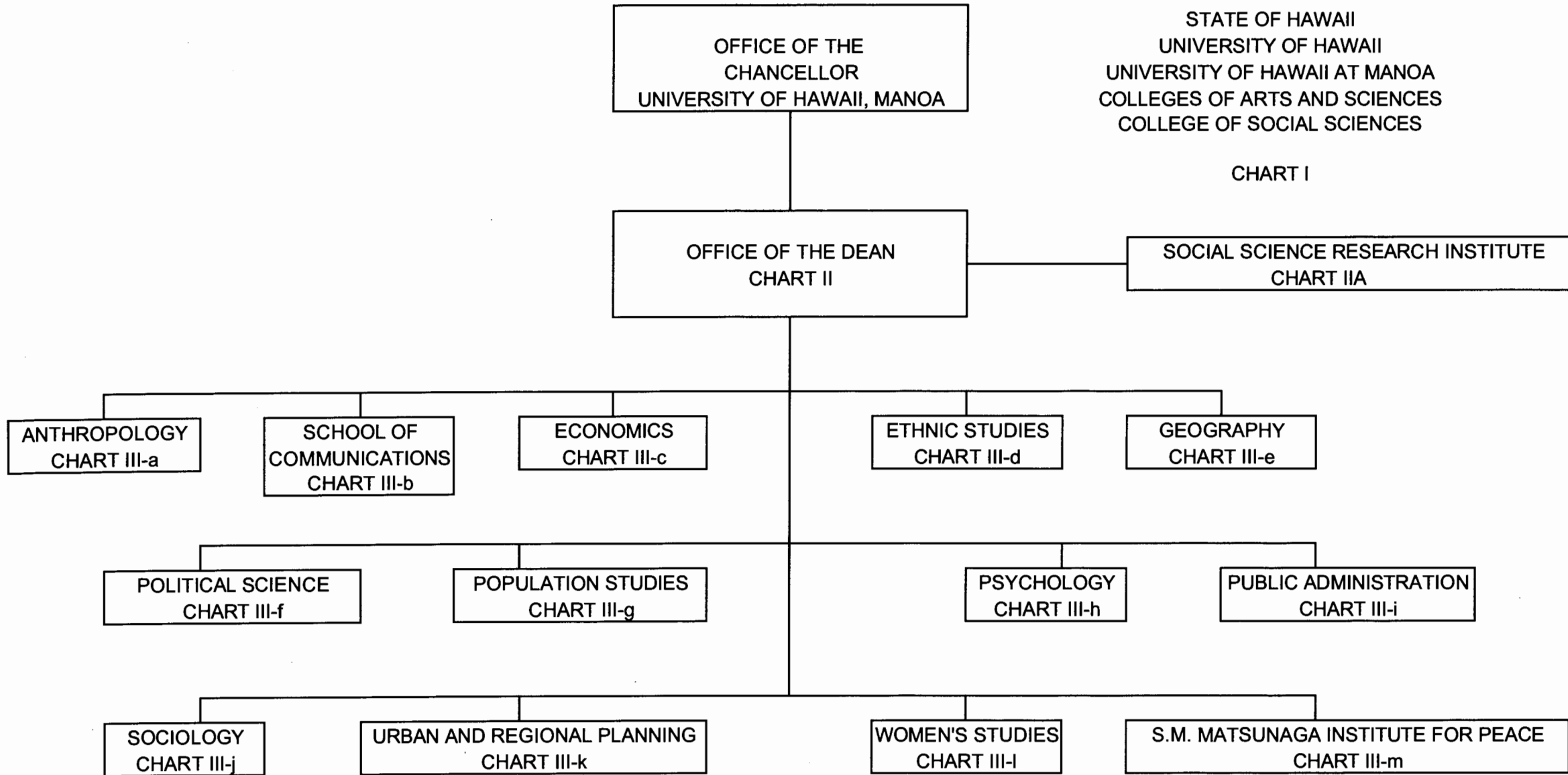
Approved: AUG 16 2004

*Richard Dubanoski*

Richard Dubanoski, Dean  
College of Social Sciences

General Funds    5.50





STATE OF HAWAII  
UNIVERSITY OF HAWAII  
UNIVERSITY OF HAWAII AT MANOA  
COLLEGES OF ARTS AND SCIENCES  
COLLEGE OF SOCIAL SCIENCES

CHART I

OFFICE OF THE DEAN  
CHART II

SOCIAL SCIENCE RESEARCH INSTITUTE  
CHART IIA

ANTHROPOLOGY  
CHART III-a

SCHOOL OF  
COMMUNICATIONS  
CHART III-b

ECONOMICS  
CHART III-c

ETHNIC STUDIES  
CHART III-d

GEOGRAPHY  
CHART III-e

POLITICAL SCIENCE  
CHART III-f

POPULATION STUDIES  
CHART III-g

PSYCHOLOGY  
CHART III-h

PUBLIC ADMINISTRATION  
CHART III-i

SOCIOLOGY  
CHART III-j

URBAN AND REGIONAL PLANNING  
CHART III-k

WOMEN'S STUDIES  
CHART III-l

S.M. MATSUNAGA INSTITUTE FOR PEACE  
CHART III-m

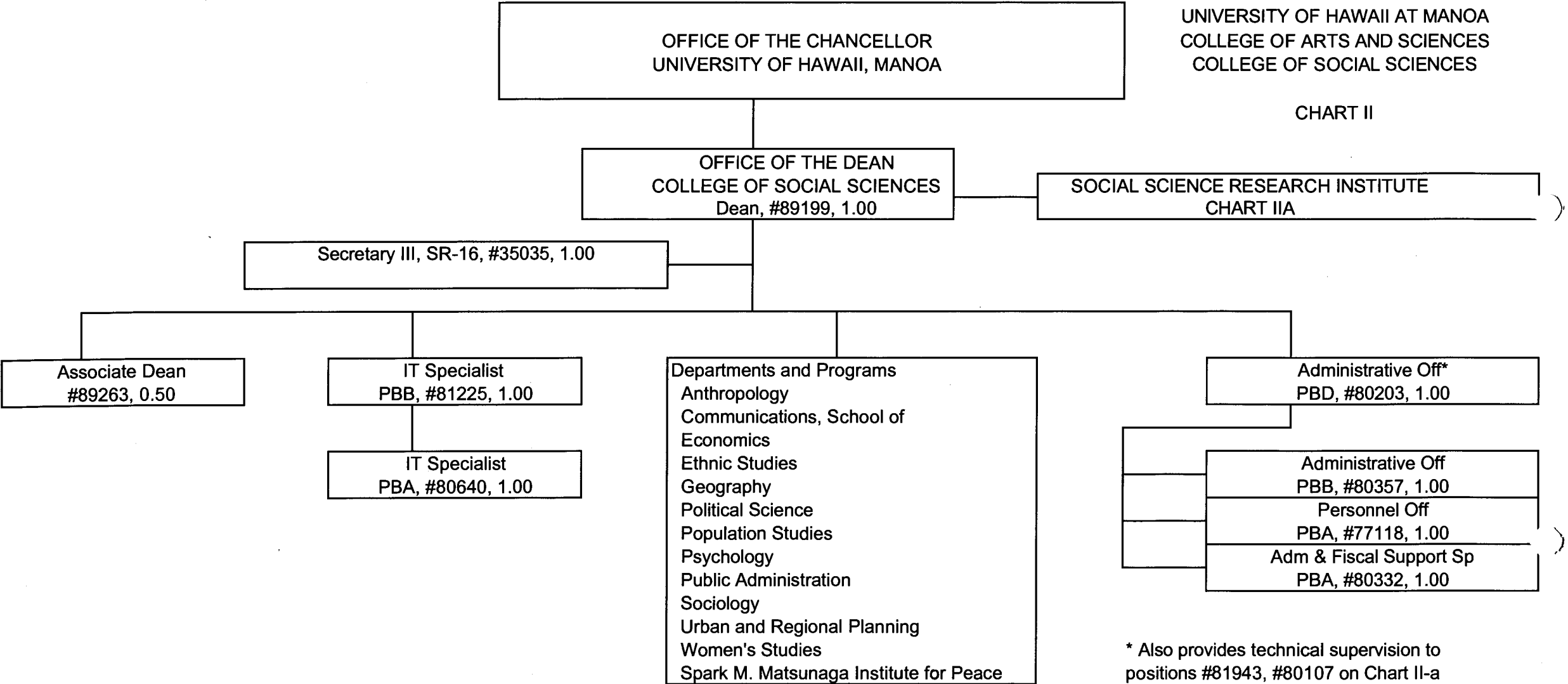
**SUPERSEDED**  
Date FEB 17 2005

**CHART UPDATED**  
DATE JUL 01 2004

Approved: AUG 16 2004  
*Richard Dubanoski*  
Richard Dubanoski, Dean  
College of Social Sciences

STATE OF HAWAII  
UNIVERSITY OF HAWAII  
UNIVERSITY OF HAWAII AT MANOA  
COLLEGE OF ARTS AND SCIENCES  
COLLEGE OF SOCIAL SCIENCES

CHART II



\* Also provides technical supervision to  
positions #81943, #80107 on Chart II-a

**SUPERSEDED**  
Date FEB 17 2005

Approved: AUG 16 2004  
*Richard Dubanoski*  
Richard Dubanoski, Dean  
College of Social Sciences

General Funds 8.50  
**CHART UPDATED**  
DATE JUL 01 2004