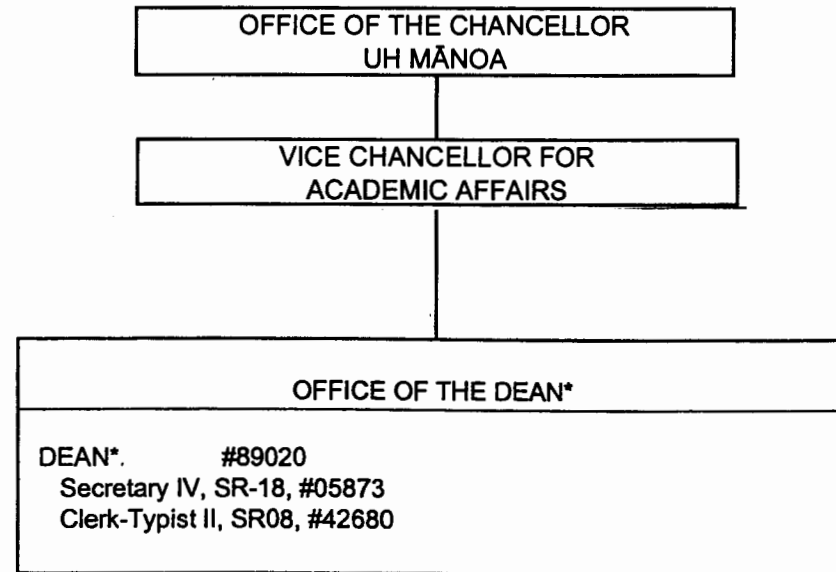


FEB 17 2005

*& Director of Research and Cooperative Extension

STATE OF HAWAII
UNIVERSITY OF HAWAII
UNIVERSITY OF HAWAII AT MĀNOA
OFFICE OF THE CHANCELLOR
OFFICE OF THE VICE CHANCELLOR FOR
ACADEMIC AFFAIRS
COLLEGE OF TROPICAL AGRICULTURE AND
HUMAN RESOURCES

OFFICE OF THE DEAN
POSITION ORGANIZATION CHART: XLI-A



FEB 17 2005

* & Director of Research and Cooperative Extension

STATE OF HAWAII
UNIVERSITY OF HAWAII
UNIVERSITY OF HAWAII AT MANOA
COLLEGE OF TROPICAL AGRICULTURE AND HUMAN RESOURCES

OFFICE OF PUBLICATIONS AND INFORMATION
POSITION ORGANIZATION CHART: XLI-B

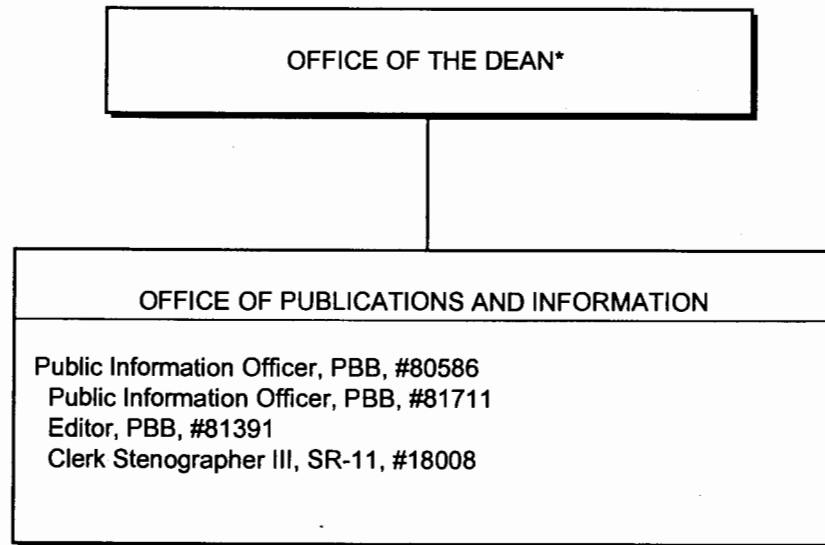


CHART UPDATED
DATE JUL 01 2004

* & Director of Research and Cooperative Extension

STATE OF HAWAII
UNIVERSITY OF HAWAII
UNIVERSITY OF HAWAII AT MANOA
COLLEGE OF TROPICAL AGRICULTURE AND HUMAN RESOURCES

OFFICE OF ADMINISTRATIVE SERVICES
POSITION ORGANIZATION CHART: XLI-C

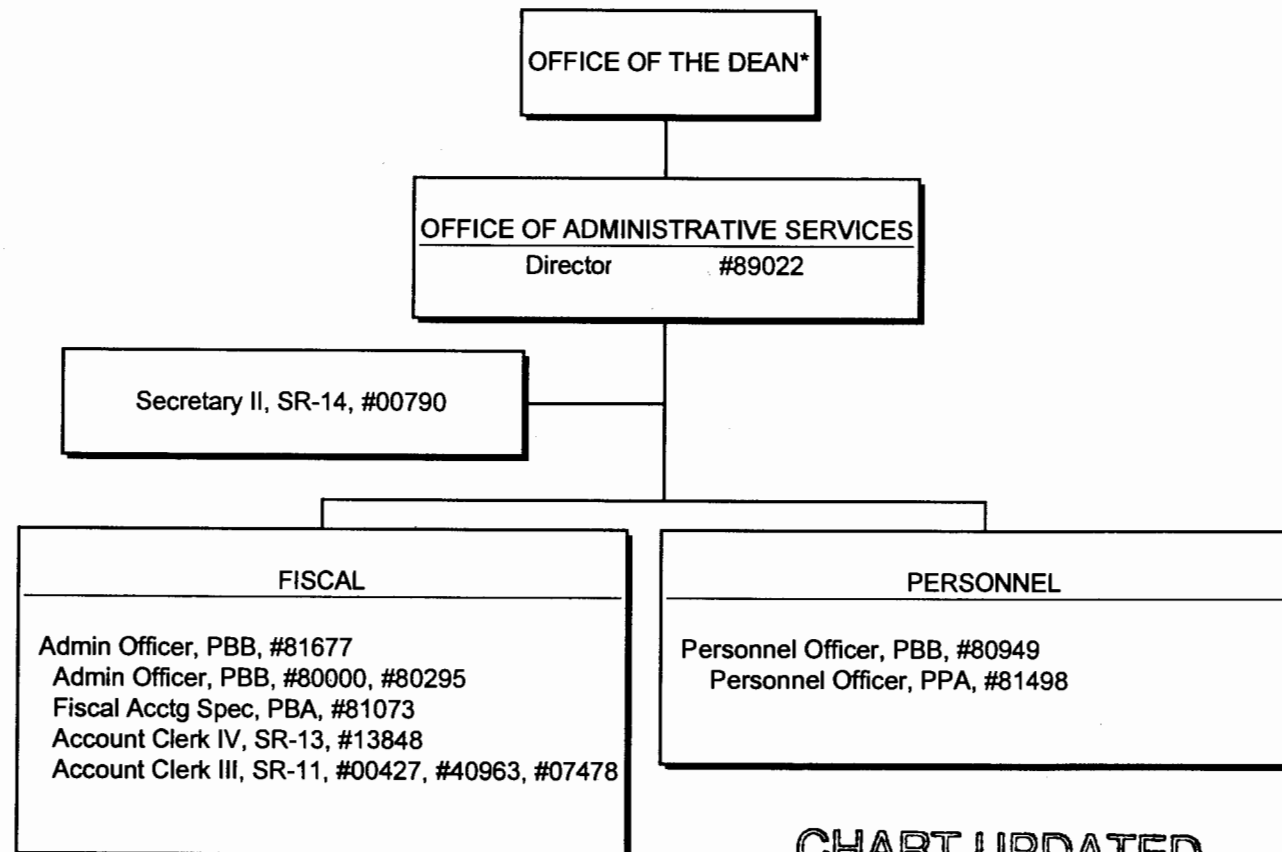


CHART UPDATED
DATE JUL 01 2004

*& Director of Research and Cooperative Extension

STATE OF HAWAII
UNIVERSITY OF HAWAII
UNIVERSITY OF HAWAII AT MANOA
COLLEGE OF TROPICAL AGRICULTURE AND HUMAN RESOURCES

OFFICE OF PLANNING AND MANAGEMENT SYSTEMS
POSITION ORGANIZATION CHART: XLI-D

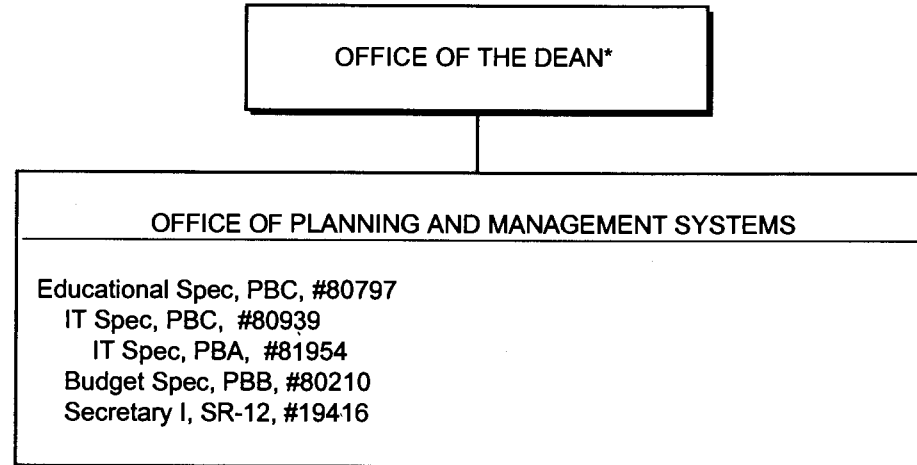


CHART UPDATED
DATE JUL 01 2004

*& Director of Research and Cooperative Extension

STATE OF HAWAII
UNIVERSITY OF HAWAII
UNIVERSITY OF HAWAII AT MANOA
COLLEGE OF TROPICAL AGRICULTURE AND HUMAN RESOURCES

OFFICE OF THE ASSOCIATE DEAN FOR ACADEMIC AND STUDENT
AFFAIRS
POSITION ORGANIZATION CHART: XLI-E

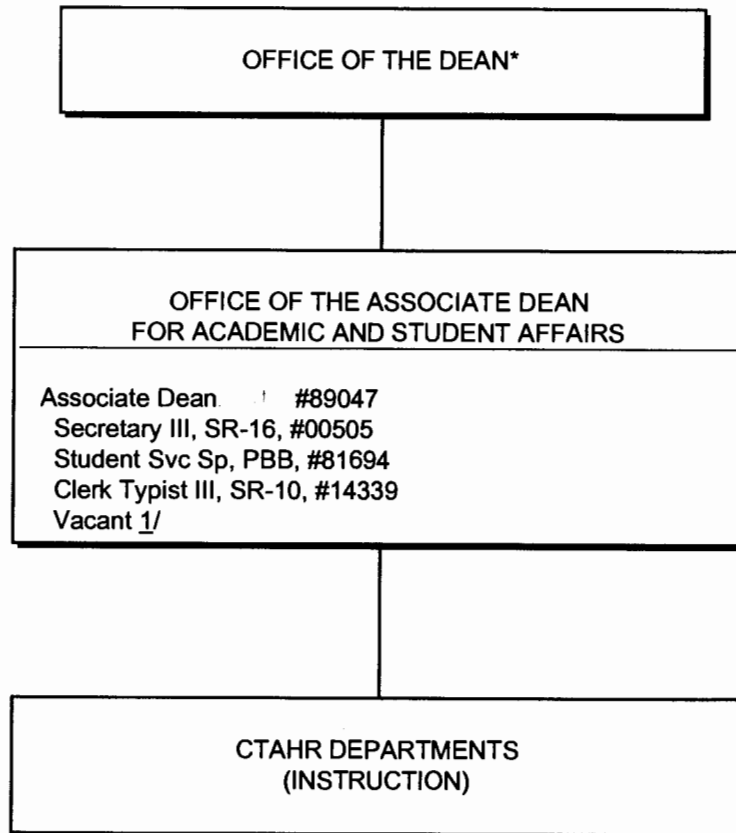


CHART UPDATED
DATE JUL 01 2004

* & Director of Research and Cooperative Extension
1/ Vacant Position in Manoa Pool:
Clerk Typist II, #45478 (.75)

STATE OF HAWAII
UNIVERSITY OF HAWAII
UNIVERSITY OF HAWAII AT MANOA
COLLEGE OF TROPICAL AGRICULTURE AND HUMAN RESOURCES

OFFICE OF THE ASSOCIATE DEAN AND ASSOCIATE DIRECTOR FOR RESEARCH
POSITION ORGANIZATION CHART: XLI-F

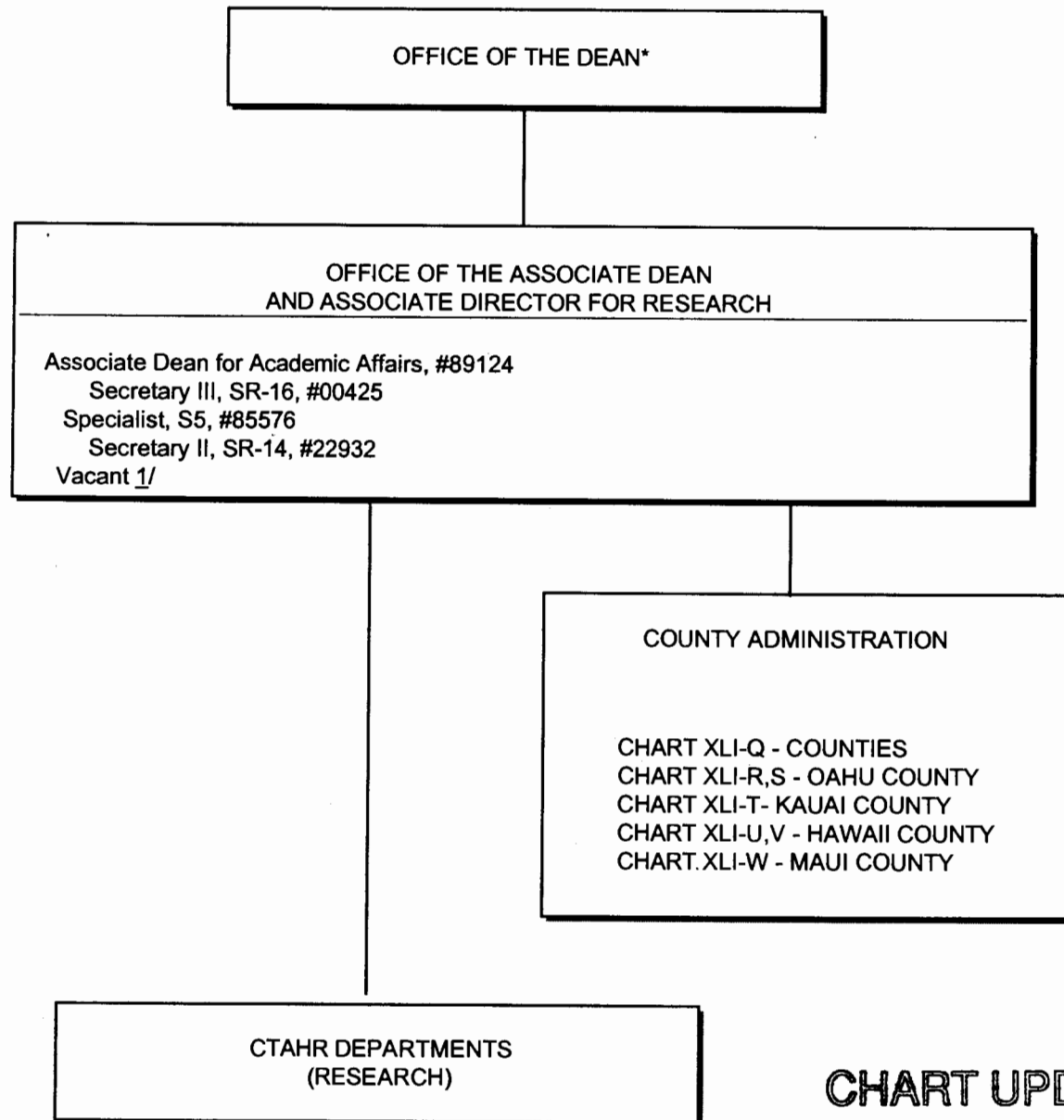


CHART UPDATED

DATE JUL 01 2004

* & Director of Research and Cooperative Extension

1/Vacant Positions in Manoa Pool:

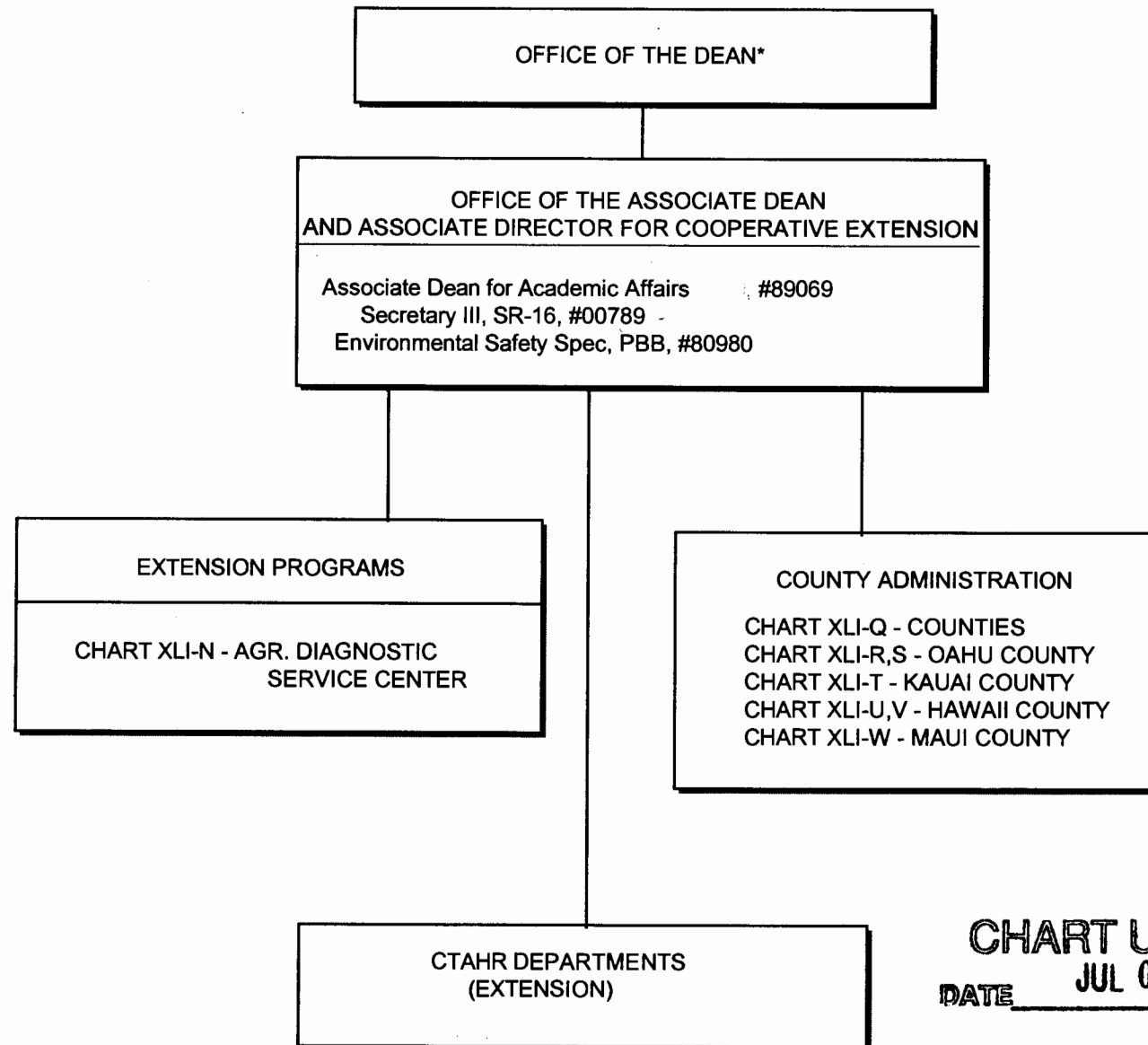
UH Research Assoc V, #81666

UH Fiscal Acctg Spec II, #81280

Ag Res Tech V, #50068

STATE OF HAWAII
UNIVERSITY OF HAWAII
UNIVERSITY OF HAWAII AT MANOA
COLLEGE OF TROPICAL AGRICULTURE AND HUMAN RESOURCES

OFFICE OF THE ASSOCIATE DEAN AND ASSOCIATE DIRECTOR
FOR COOPERATIVE EXTENSION
POSITION ORGANIZATION CHART: XLI-G



* & Director of Research and Cooperative Extension

CHART UPDATED
DATE JUL 01 2004

STATE OF HAWAII
UNIVERSITY OF HAWAII
UNIVERSITY OF HAWAII AT MANOA
COLLEGE OF TROPICAL AGRICULTURE AND HUMAN RESOURCES

DEPARTMENT OF FAMILY AND CONSUMER SCIENCES
POSITION ORGANIZATION CHART: XLI-H

OFFICES OF THE ASSOCIATE DEANS AND DIRECTORS
FOR ACADEMIC AND STUDENT AFFAIRS,
RESEARCH, AND COOPERATIVE EXTENSION

DEPARTMENT OF FAMILY AND CONSUMER SCIENCES

Chairperson (Appointed from among faculty positions)

Secretary II, SR-14, #22849

Clerk-Steno II, SR-09, #21208

Clerk-Typist II, SR-08, #04108

Faculty 1/

Oahu

#82074, #82336, #82392, #82485, #82699, #82866,

#82869, #82094, #83220, #83242, #83525, #83553,

#83666, #83765, #83843, #84070, #84082, #84388,

#84648, #84662, #84685, #84914, #85151, #85421, #85476

Hawaii

#82505, #83267, #84610

Kauai

#82175

Maui

#84913

Graduate Assistant, GA, #88134 (.50), #88410 (.50),

#88576 (.50)

CHART UPDATED
JUL 01 2004
DATE _____

1/ Research FTE: .50, Extension FTE: 2.85 Instruction FTE: 14.10

STATE OF HAWAII
UNIVERSITY OF HAWAII
UNIVERSITY OF HAWAII AT MANOA
COLLEGE OF TROPICAL AGRICULTURE AND HUMAN RESOURCES

DEPARTMENT OF HUMAN NUTRITION, FOOD AND ANIMAL
SCIENCES
POSITION ORGANIZATION CHART: XLI-I

OFFICE OF THE ASSOCIATE DEANS AND DIRECTORS
FOR ACADEMIC AND STUDENT AFFAIRS
RESEARCH, AND COOPERATIVE EXTENSION

DEPARTMENT OF HUMAN NUTRITION, FOOD AND ANIMAL SCIENCES

Chairperson (Appointed from among faculty positions)

Secretary II, SR-14, #00400

Clerk Typist II, SR-08, #12195, #15513, #42682

Faculty 1/

Oahu

#82090, #82107, #82248, #82529, #82945, #83017, #83510, #83633, #83742, #83811,
#83830, #83862, #84227, #84228, #84323, #84439, #84454, #84496, #84512, #84668,
#84919, #84920, #87552

Maui

#83728, #84163

Hawaii

#84158, #84276, #84297

Kauai

#82363

Research Associate, PBB, #80410

Research Associate, PBA, #77092

IT Spec, PBB, #80037

Graduate Asst, GA-R, #88088 (.50), #88165 (.50), #88241 (.50), #88303 (.50), #88438 (.50), #88565 (.50)

Agr Research Technician VI, SR-18, #00428

Agr Research Technician V, SR-16, #00395, #00396, #00432, #11024

Agr Research Technician IV, SR-14, #00433

Agr Research Technician III, SR-11, #00418, #00434, #03712

Agr Research Aid II, SR-09, #00441

Equipment Operator III, BC-09, #00419

CHART UPDATED
DATE JUL 01 2004

STATE OF HAWAII
UNIVERSITY OF HAWAII
UNIVERSITY OF HAWAII AT MANOA
COLLEGE OF TROPICAL AGRICULTURE AND HUMAN RESOURCES

DEPARTMENT OF MOLECULAR BIOSCIENCES AND BIOENGINEERING
POSITION ORGANIZATION CHART: XLI-J

OFFICE OF THE ASSOCIATE DEANS AND DIRECTORS
FOR ACADEMIC AND STUDENT AFFAIRS,
RESEARCH, AND COOPERATIVE EXTENSION

DEPARTMENT OF MOLECULAR BIOSCIENCES AND BIOENGINEERING

Chairperson (Appointed from among faculty positions)

Secretary II, SR-14, #12960

Clerk Typist II, SR-08, #00803, #14758, #00402

Faculty^{1/}

Oahu

#82027, #82224, #82432, #82848, #82919, #83034, #83184, #83343, #83690,

#83767, #83968, #84114, #84145, #84193, #84325, #84477, #84600, #84617, #84631, #87523,

Mechanical Engineer, PBB, #80784

#83882

Research Associate, PBB, #80323, #80324, #90409, #81325

Graduate Assistant, GA-R, #88219 (.50), #88509 (.50), #88630 (.50), #88643 (.50)

Food Processor IV, F109B, #07979

Agr Eqp Dev Wkg Supv, WS-13, #05729

Agr Lab Technician I, BC-12, #05730

CHART UPDATED

DATE JUL 01 2004

STATE OF HAWAII
UNIVERSITY OF HAWAII
UNIVERSITY OF HAWAII AT MANOA
COLLEGE OF TROPICAL AGRICULTURE AND HUMAN RESOURCES

DEPARTMENT OF NATURAL RESOURCES AND ENVIRONMENTAL MANAGEMENT
POSITION ORGANIZATION CHART: XLI-K

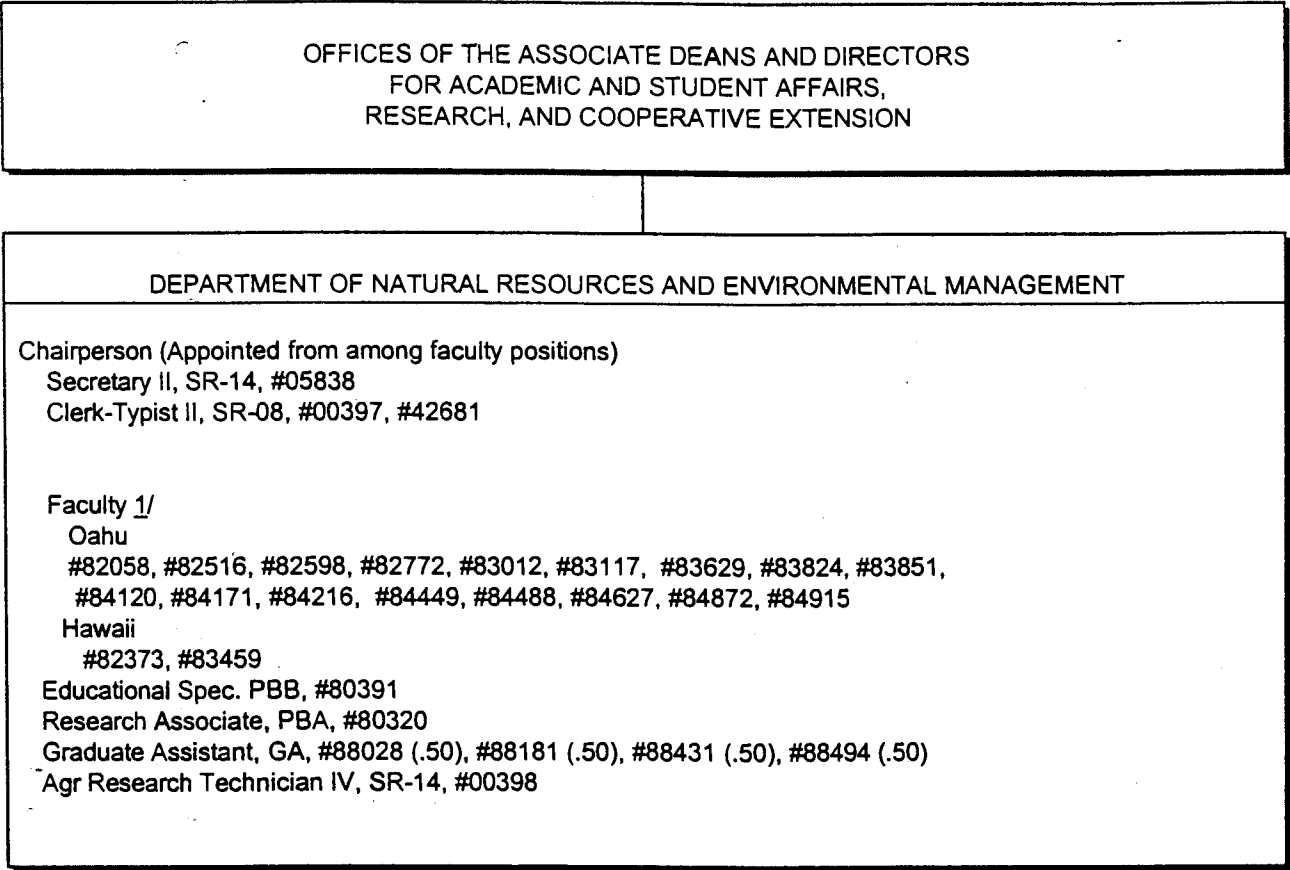


CHART UPDATED
DATE JUL 01 2004

1/ Research FTE: 5.95 Extension FTE: 2.40 Instruction FTE: 3.65

STATE OF HAWAII
UNIVERSITY OF HAWAII
UNIVERSITY OF HAWAII AT MANOA
COLLEGE OF TROPICAL AGRICULTURE AND HUMAN RESOURCES

DEPARTMENT OF PLANT AND ENVIRONMENTAL PROTECTION
SCIENCES
POSITION ORGANIZATION CHART: XLI-L

OFFICES OF THE ASSOCIATE DEANS AND DIRECTORS
FOR ACADEMIC AND STUDENT AFFAIRS,
RESEARCH, AND COOPERATIVE EXTENSION

DEPARTMENT OF PLANT AND ENVIRONMENTAL PROTECTION SCIENCES

Chairperson (Appointed from among faculty positions)

Secretary II, SR-14, #07477

Clerk-Typist II, SR-08, #00794, #00801, #15509

Faculty 1/

Oahu

#82047, #82139, #82238, #82550, #82687, #82865, #82976, #83067,
#83320, #83513, #83770, #83884, #84006, #84041, #84138, #84316,
#84489, #84911, #85510, #85547, #87443

Maui

#86034, #85530

Hawaii

#82985, #82722, #83255, #83462, #83542, #84910, #85538

Kauai

#83816, #83840, #85505

Educational Specialist, PBB, #80250

Research Associate, PBB, #80310, #80385, #80386, #80388, #81178,
#81311

Research Associate, PBA, #81313

Graduate Assistant, GA, #88486 (.50), #84932 (.50)

Agr Research Technician V, SR-16, #00442

Agr Research Technician IV, SR-14, #24270

Agr Research Technician III, SR-11, #24269

CHART UPDATED

DATE JUL 01 2004

1/ Research FTE: 5.91 Extension FTE: 4.20 Instruction FTE: 2.60

STATE OF HAWAII
UNIVERSITY OF HAWAII
UNIVERSITY OF HAWAII AT MANOA
COLLEGE OF TROPICAL AGRICULTURE AND HUMAN
RESOURCES

DEPARTMENT OF TROPICAL PLANT AND SOIL SCIENCE
POSITION ORGANIZATION CHART: XLI-M

OFFICES OF THE ASSOCIATE DEANS AND DIRECTORS
FOR ACADEMIC AND STUDENT AFFAIRS,
RESEARCH, AND COOPERATIVE EXTENSION

DEPARTMENT OF TROPICAL PLANT AND SOIL SCIENCE

Chairperson (Appointed from among faculty positions)

Secretary II, SR-14, #00793, #15512 1/

Clerk-Steno III, SR-11, #00399

Clerk Typist II, SR-08, # 07872

Faculty 2/

Oahu

#82023, #82181, #82240, #82313, #82464, #82704, #82747, #83142,
#83159, #83260, #83304, #83388, #83682, #83705, #83740, #83785,
#83938, #84067, #84306, #84321, #84408, #84420, #84481, #84501,
#84640, #84916, #85555

Maui

#82881, #83848, #84075, #84530, #85477, #87584

Hawaii

#82758, #83054, #82951, #83073, #83286, #83515, #84354, #84585, #85542

Kauai

#82196, #84500

Educational Specialist, PBB, #80249, #81362

Research Associate, PBB, #80270, #80313

Graduate Assistant, GA, #88171 (.50), #88423 (.50)

Agr Research Technician V, SR-16, #11019

Agr Research Technician IV, SR-14, #05392, #00397

CHART UPDATED
JUL 01 2004
DATE _____

1/Position to be redescribed.

2/Research FTE: 8.85 Extension FTE: 10.91 Instruction FTE: 5.09

STATE OF HAWAII
UNIVERSITY OF HAWAII
UNIVERSITY OF HAWAII AT MANOA
COLLEGE OF TROPICAL AGRICULTURE AND HUMAN RESOURCES

AGRICULTURAL DIAGNOSTIC SERVICE CENTER
POSITION ORGANIZATION CHART: XLI-N

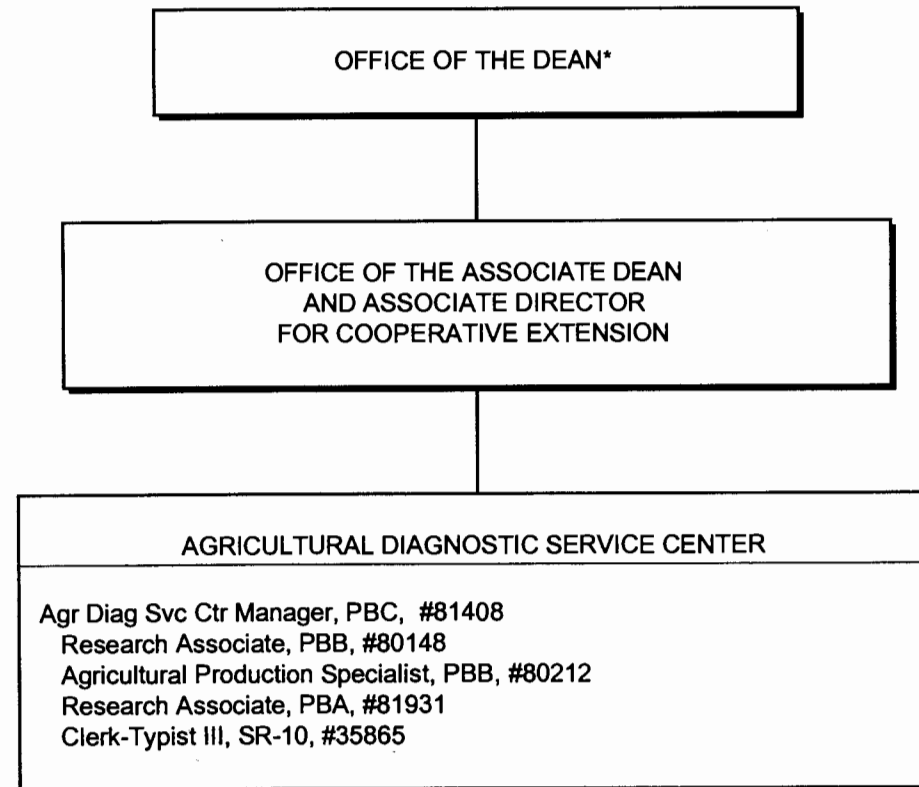


CHART UPDATED

DATE JUL 01 2004

* & Director of Research and Cooperative Extension

STATE OF HAWAII
UNIVERSITY OF HAWAII
UNIVERSITY OF HAWAII AT MANOA
COLLEGE OF TROPICAL AGRICULTURE AND HUMAN RESOURCES

CENTER ON THE FAMILY
POSITION ORGANIZATION CHART: XLI-O

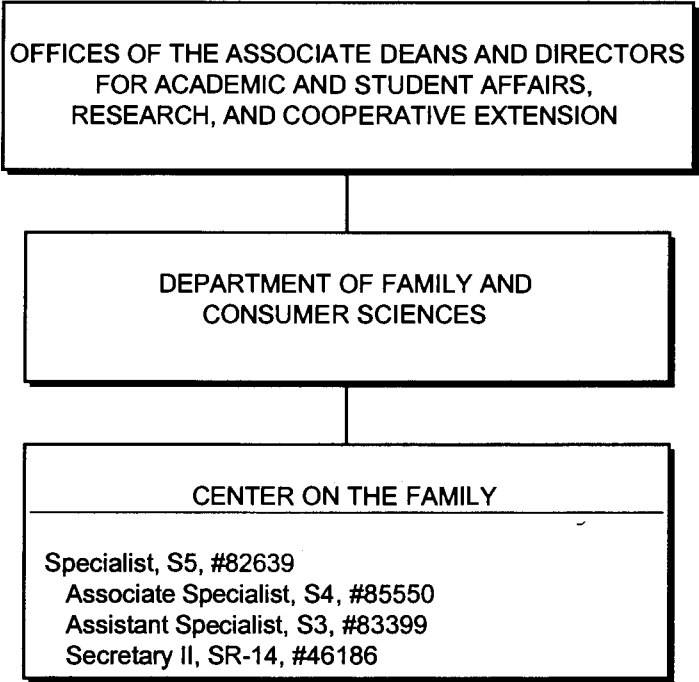


CHART UPDATED
DATE JUL 01 2004

STATE OF HAWAII
UNIVERSITY OF HAWAII
UNIVERSITY OF HAWAII AT MANOA
COLLEGE OF TROPICAL AGRICULTURE AND HUMAN RESOURCES

4-H OFFICE
POSITION ORGANIZATION CHART: XLI-P

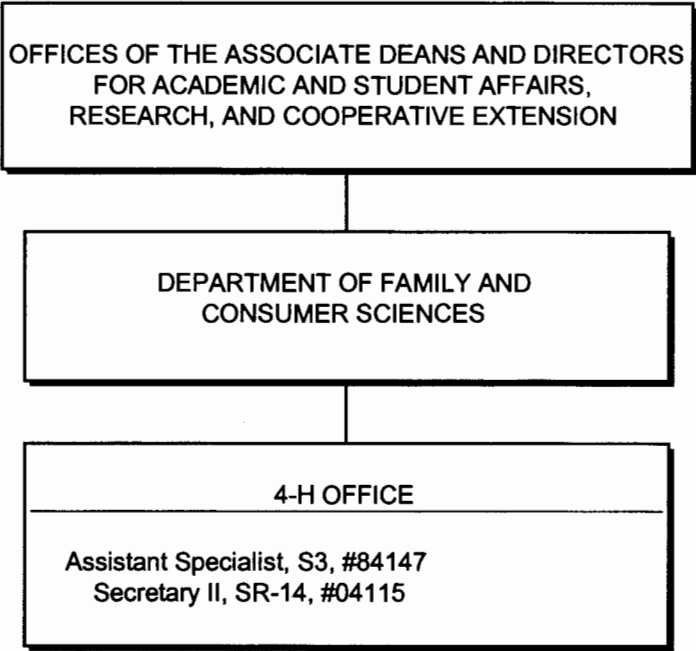


CHART UPDATED
DATE JUL 01 2004

STATE OF HAWAII
UNIVERSITY OF HAWAII
UNIVERSITY OF HAWAII AT MANOA
COLLEGE OF TROPICAL AGRICULTURE AND HUMAN RESOURCES

COUNTY ADMINISTRATION
POSITION ORGANIZATION CHART: XLI-Q

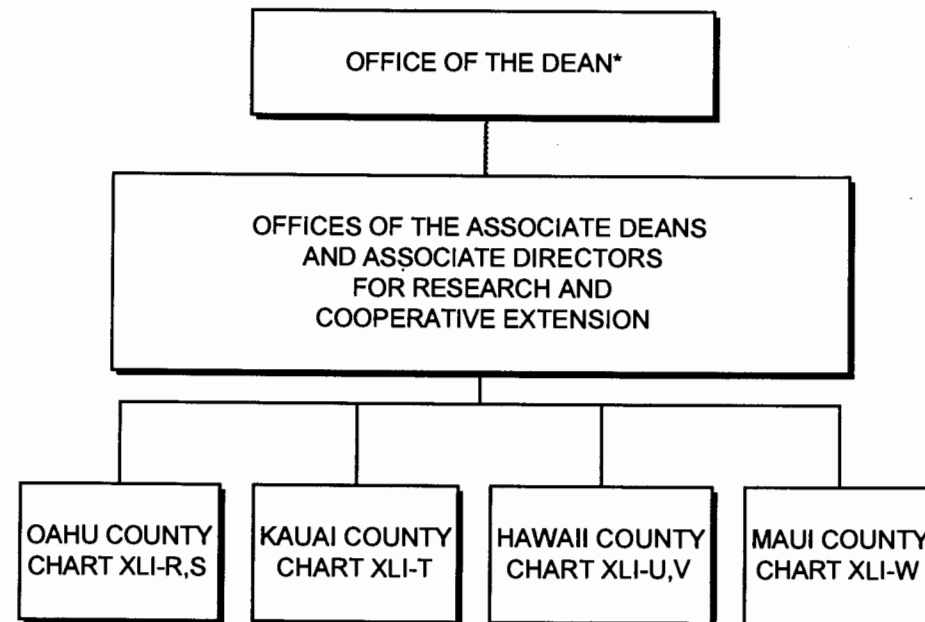


CHART UPDATED
DATE JUL 01 2004

* & Director of Cooperative Science & Education

STATE OF HAWAII
UNIVERSITY OF HAWAII
UNIVERSITY OF HAWAII AT MANOA
COLLEGE OF TROPICAL AGRICULTURE AND HUMAN RESOURCES

OAHU COUNTY
POSITION ORGANIZATION CHART: XLI-R

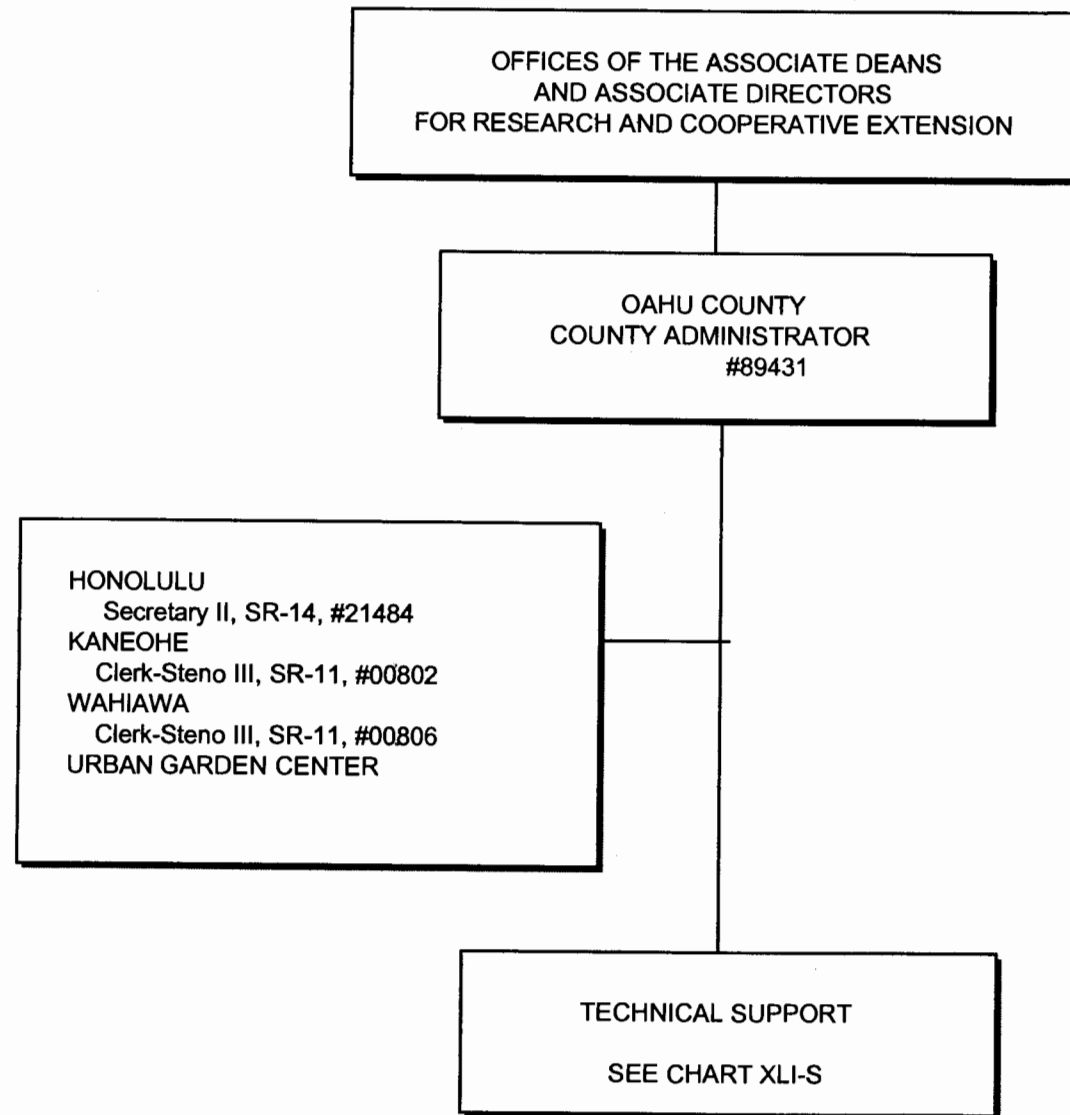


CHART UPDATED
DATE JUL 01 2004

STATE OF HAWAII
UNIVERSITY OF HAWAII
UNIVERSITY OF HAWAII AT MANOA
COLLEGE OF TROPICAL AGRICULTURE AND HUMAN RESOURCES

OAHU COUNTY - TECHNICAL SUPPORT
POSITION ORGANIZATION CHART: XLI-S

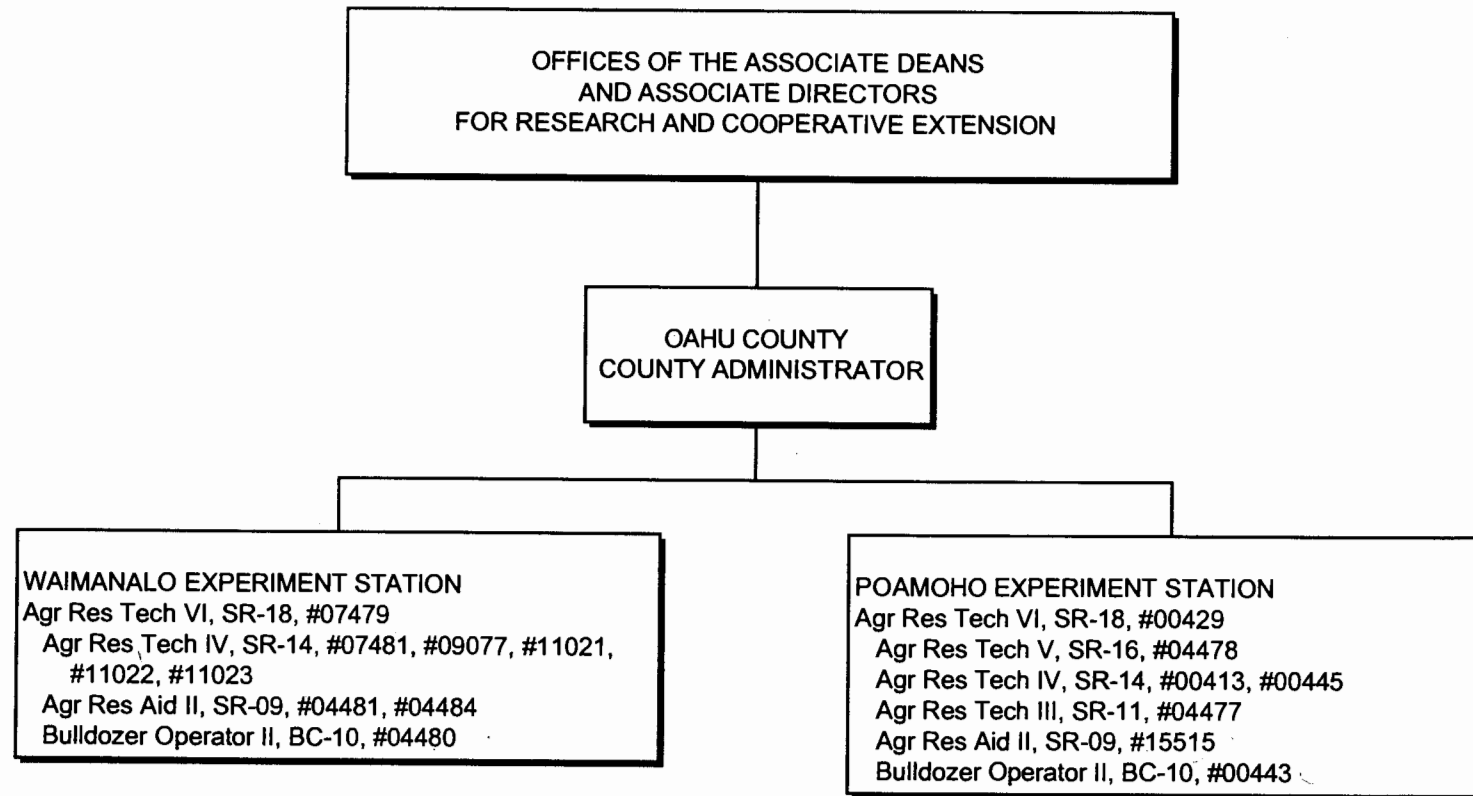


CHART UPDATED
DATE JUL 01 2004

STATE OF HAWAII
UNIVERSITY OF HAWAII
UNIVERSITY OF HAWAII AT MANOA
COLLEGE OF TROPICAL AGRICULTURE AND HUMAN RESOURCES

KAUAI COUNTY
POSITION ORGANIZATION CHART: XLI-T

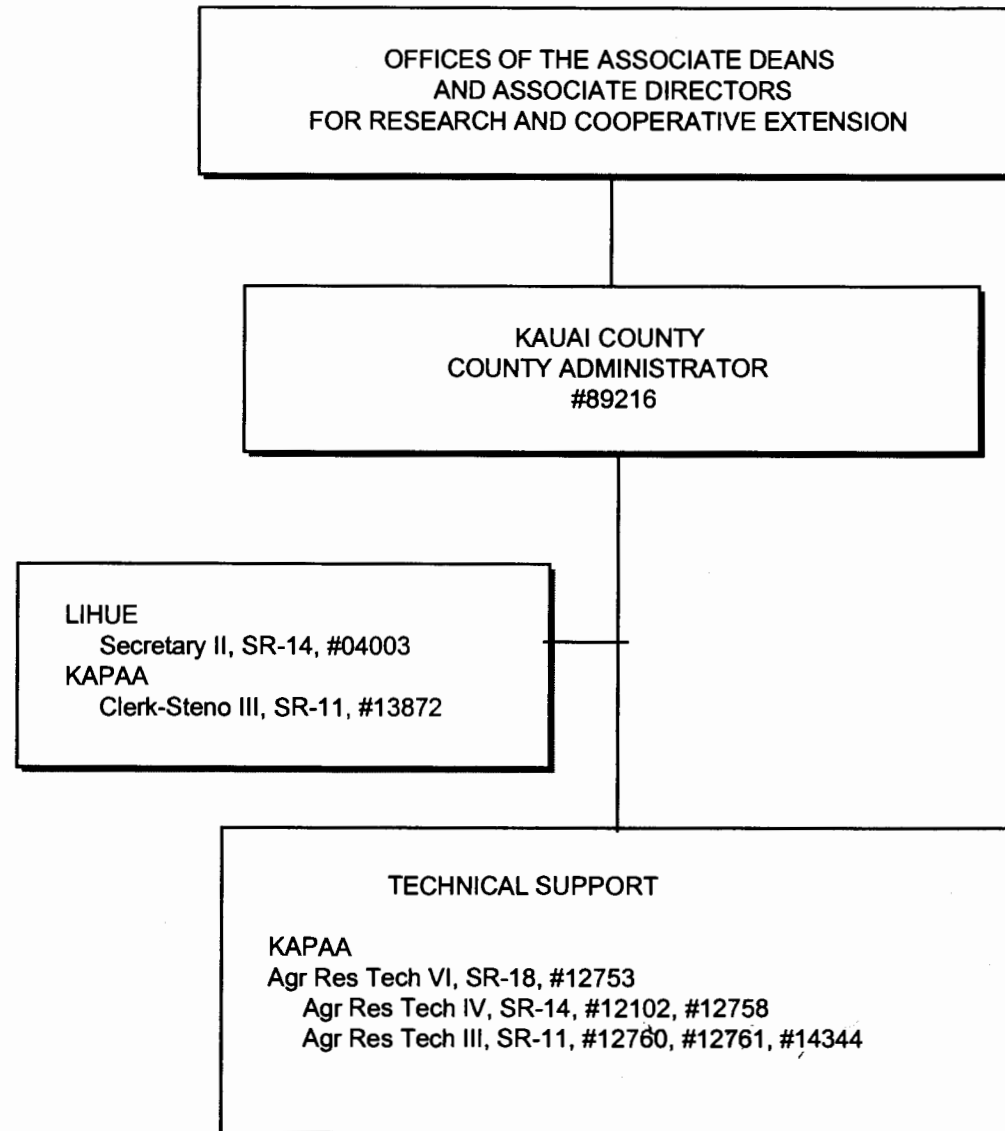


CHART UPDATED
DATE JUL 01 2004

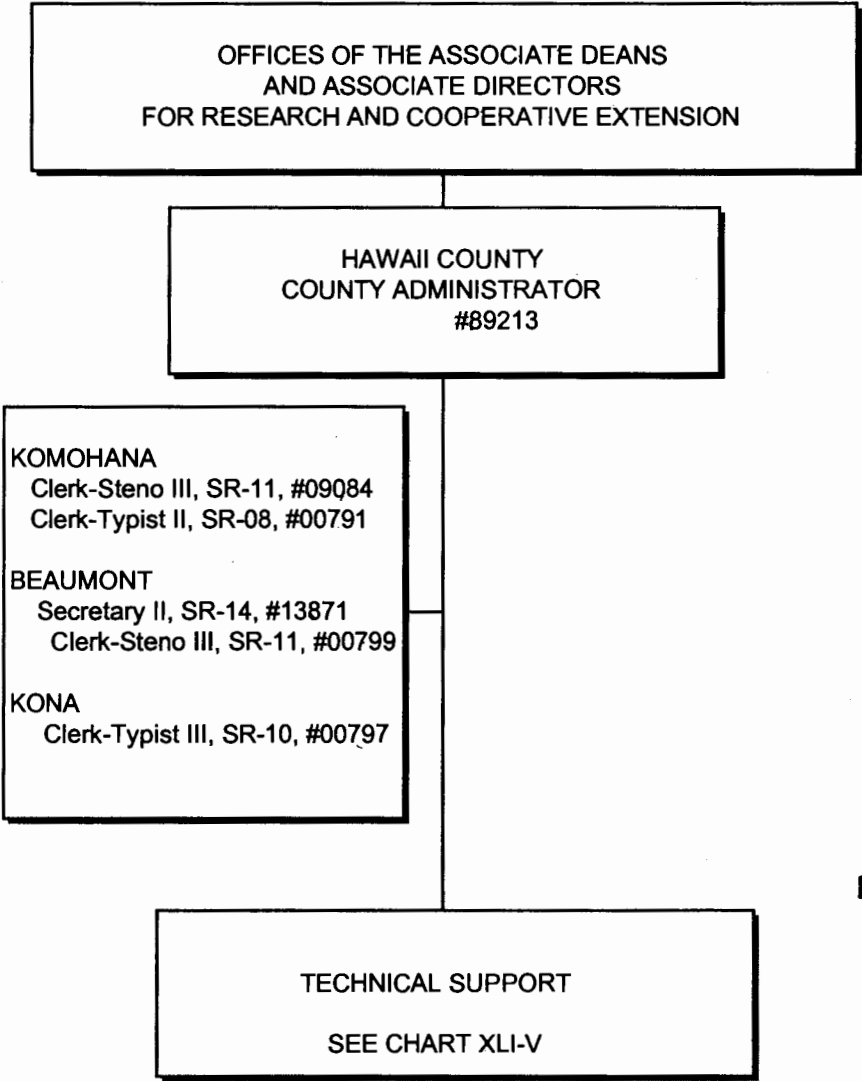


CHART UPDATED
DATE JUL 01 2004

STATE OF HAWAII
UNIVERSITY OF HAWAII
UNIVERSITY OF HAWAII AT MANOA
COLLEGE OF TROPICAL AGRICULTURE AND HUMAN RESOURCES

HAWAII COUNTY - TECHNICAL SUPPORT
POSITION ORGANIZATION CHART: XLI-V

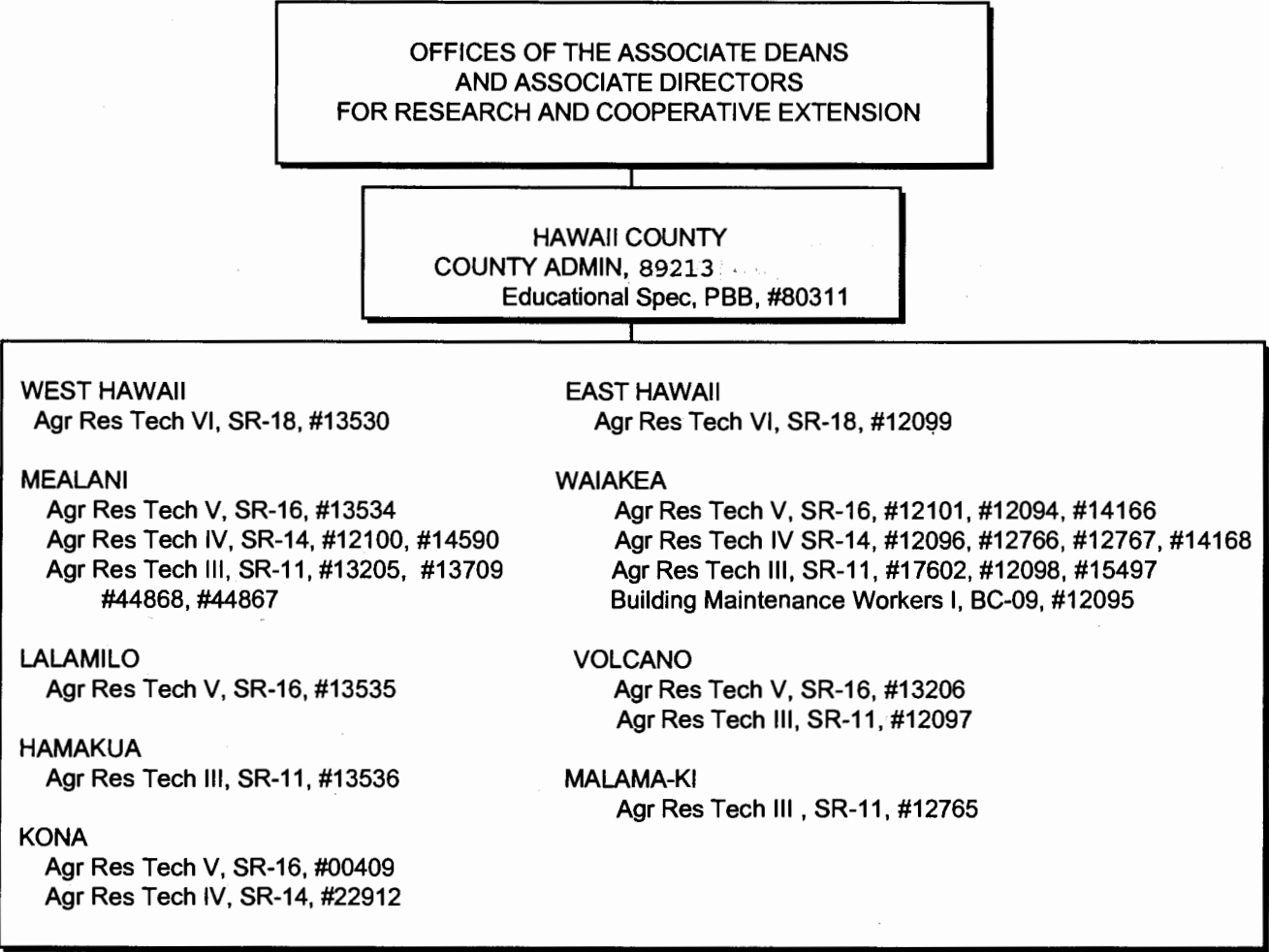


CHART UPDATED
DATE JUL 01 2004

OFFICES OF THE ASSOCIATE DEANS
AND ASSOCIATE DIRECTORS
FOR RESEARCH AND COOPERATIVE EXTENSION

MAUI COUNTY
COUNTY ADMINISTRATOR
#89215

KAHULUI
Secretary II, SR-14, #00792
Clerk-Typist II, SR-08, #42422
KULA
Clerk-Typist III, SR-10, #13714
MOLOKAI
Clerk-Steno III, SR-11, #28798

TECHNICAL SUPPORT
KULA
Agr Res Tech VI, SR-18, #00415
Agr Res Tech V, SR-16, #12901
Agr Res Tech IV, SR-14, #00436, #12897, #12898,
#12899, #12902
Agr Res Tech III, SR-11, #00404, #00406, #12900
MOLOKAI
Agr Res Tech IV, SR -14, #36749

STATE OF HAWAII
UNIVERSITY OF HAWAII
UNIVERSITY OF HAWAII AT MANOA
COLLEGE OF TROPICAL AGRICULTURE AND HUMAN RESOURCES

MAUI COUNTY
POSITION ORGANIZATION CHART: XLI-W

CHART UPDATED
DATE JUL 01 2004

OFFICE OF UNIVERSITY OF HAWAII AT MANOA
CHANCELLOR

STATE OF HAWAII
UNIVERSITY OF HAWAII
UNIVERSITY OF HAWAII AT MANOA
COLLEGE OF TROPICAL AGRICULTURE AND HUMAN RESOURCES

ORGANIZATIONAL CHART
CHART XLI

OFFICE OF THE DEAN*
CHART XLI-A

OFFICE OF PUBLICATIONS AND INFORMATION
CHART XLI-B

OFFICE OF ADMINISTRATIVE SERVICES
CHART XLI-C

OFFICE OF PLANNING AND MANAGEMENT SYSTEMS
CHART XLI-D

OFFICE OF THE ASSOCIATE DEAN
FOR ACADEMIC AND
STUDENT AFFAIRS
CHART XLI-E

OFFICE OF THE ASSOCIATE DEAN
AND ASSOCIATE DIRECTOR
FOR RESEARCH
CHART XLI-F

OFFICE OF THE ASSOCIATE DEAN
AND ASSOCIATE DIRECTOR
FOR COOPERATIVE EXTENSION
CHART XLI-G

COUNTY ADMINISTRATION
CHART XLI-Q,R,S,T,U,V,W

EXTENSION PROGRAMS
CHART XLI-N

FAMILY AND CONSUMER SCIENCES
CENTER ON THE FAMILY
4-H OFFICE
HUMAN NUTRITION, FOOD AND ANIMAL SCIENCES
MOLECULAR BIOSCIENCES AND BIOENGINEERING
NATURAL RESOURCES & ENVIRONMENTAL MANAGEMENT
PLANT AND ENVIRONMENTAL PROTECTION SCIENCES
TROPICAL PLANT & SOIL SCIENCE

CHART XLI-H
CHART XLI-O
CHART XLI-P
CHART XLI-I
CHART XLI-J
CHART XLI-K
CHART XLI-L
CHART XLI-M

CHART UPDATED
JUL 01 2004

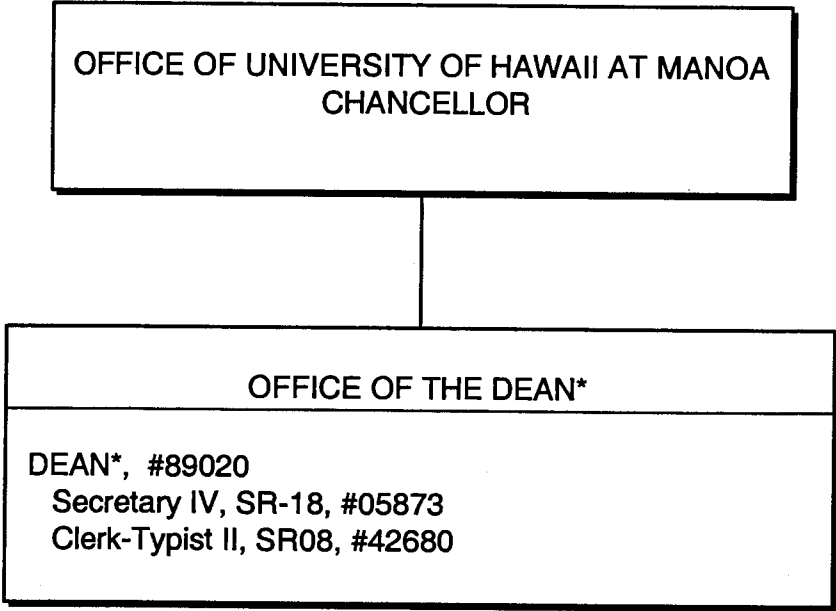
DATE _____

SUPERSEDED
Date FEB 17 2005

* & Director of Research and Cooperative Extension

STATE OF HAWAII
UNIVERSITY OF HAWAII
UNIVERSITY OF HAWAII AT MANOA
COLLEGE OF TROPICAL AGRICULTURE AND HUMAN
RESOURCES

OFFICE OF THE DEAN
POSITION ORGANIZATION CHART: XLI-A



SUPERSEDED
Date FEB 17 2005

CHART UPDATED
DATE JUL - 1 2004

*& Director of Research and Cooperative Extension