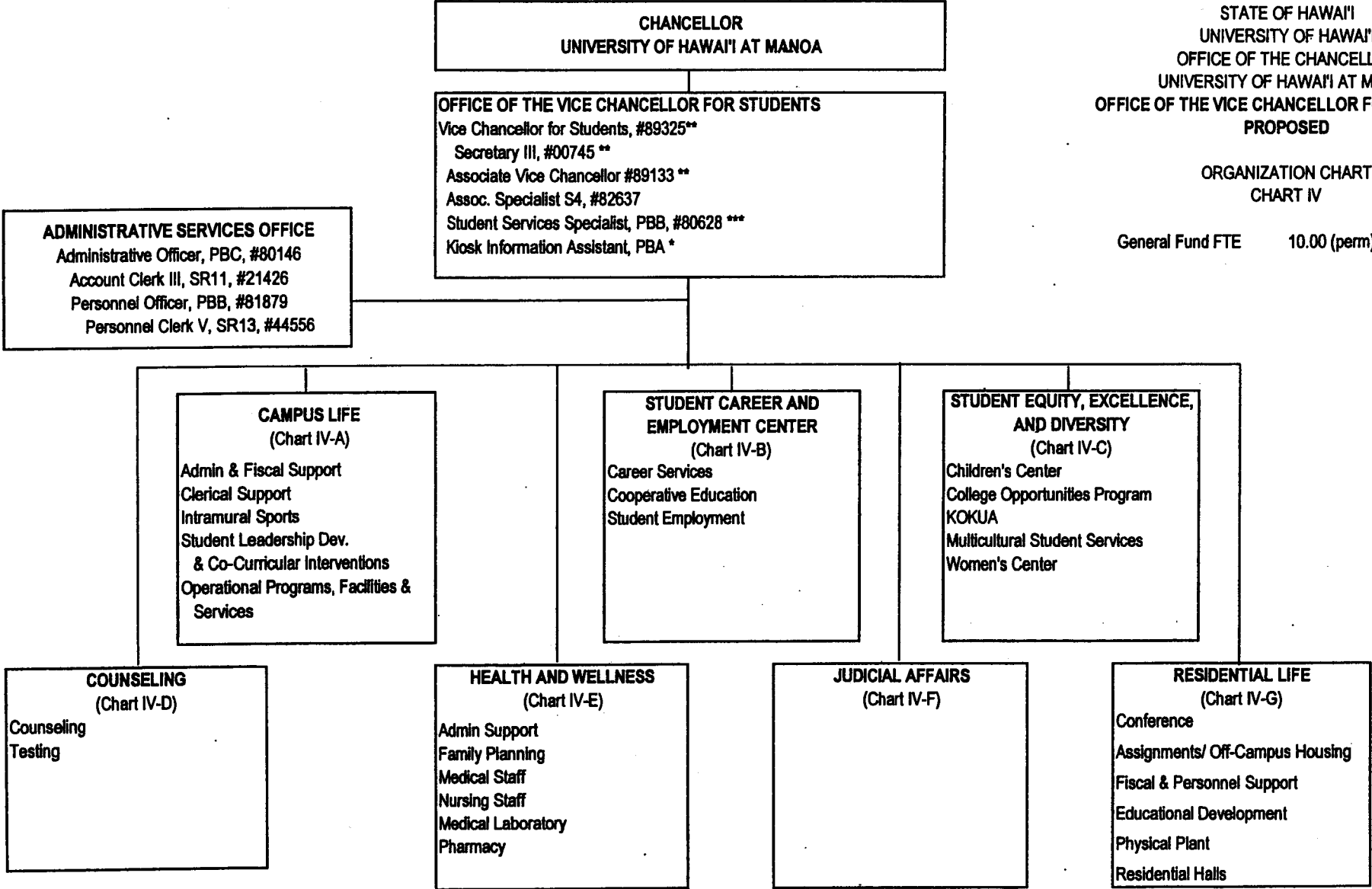


APPROVED BY THE UNIVERSITY
BOARD OF REGENTS

FEB 17 2005

Date



STATE OF HAWAII
UNIVERSITY OF HAWAII
OFFICE OF THE CHANCELLOR
UNIVERSITY OF HAWAII AT MANOA
OFFICE OF THE VICE CHANCELLOR FOR STUDENTS
PROPOSED

ORGANIZATION CHART
CHART IV

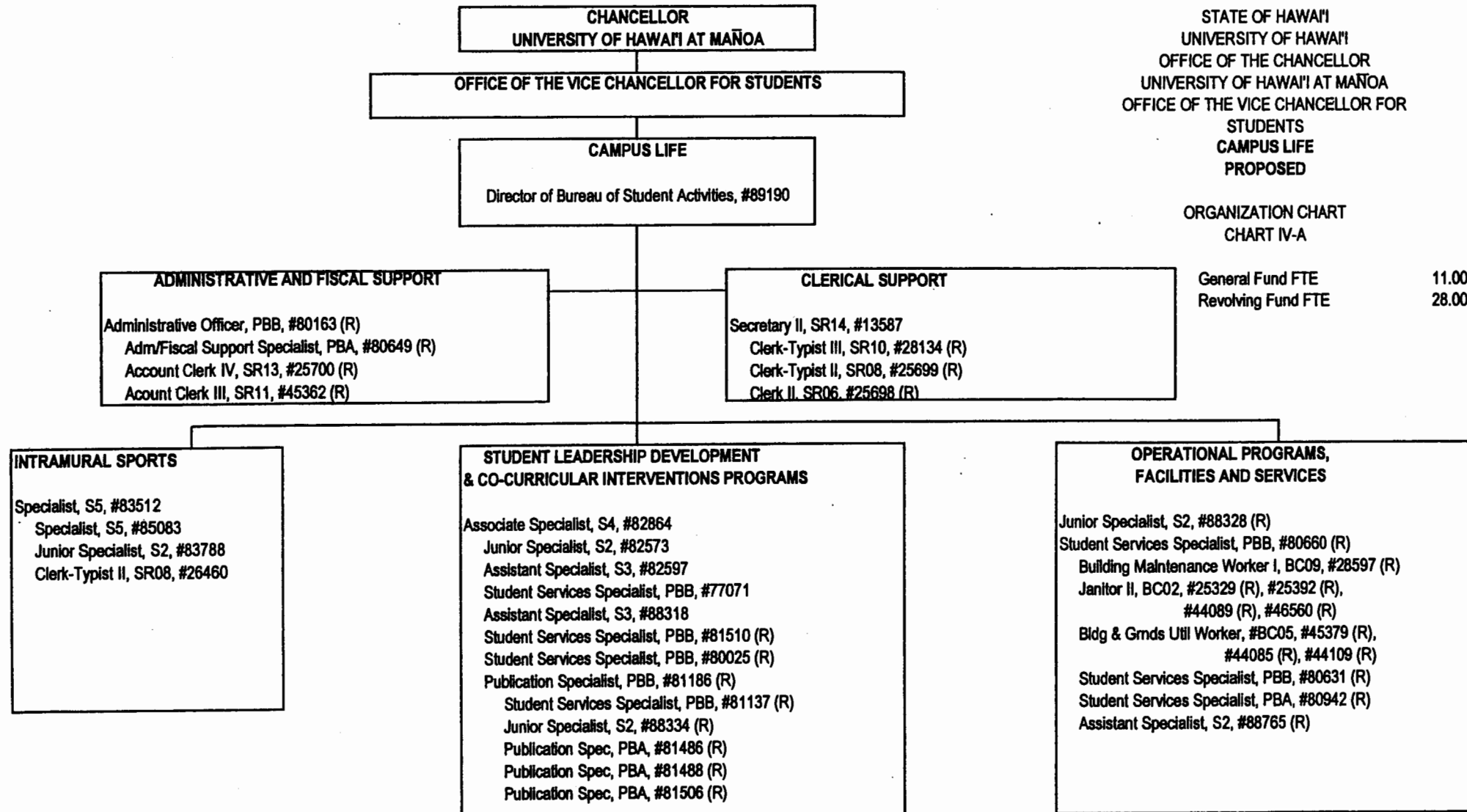
General Fund FTE 10.00 (perm)

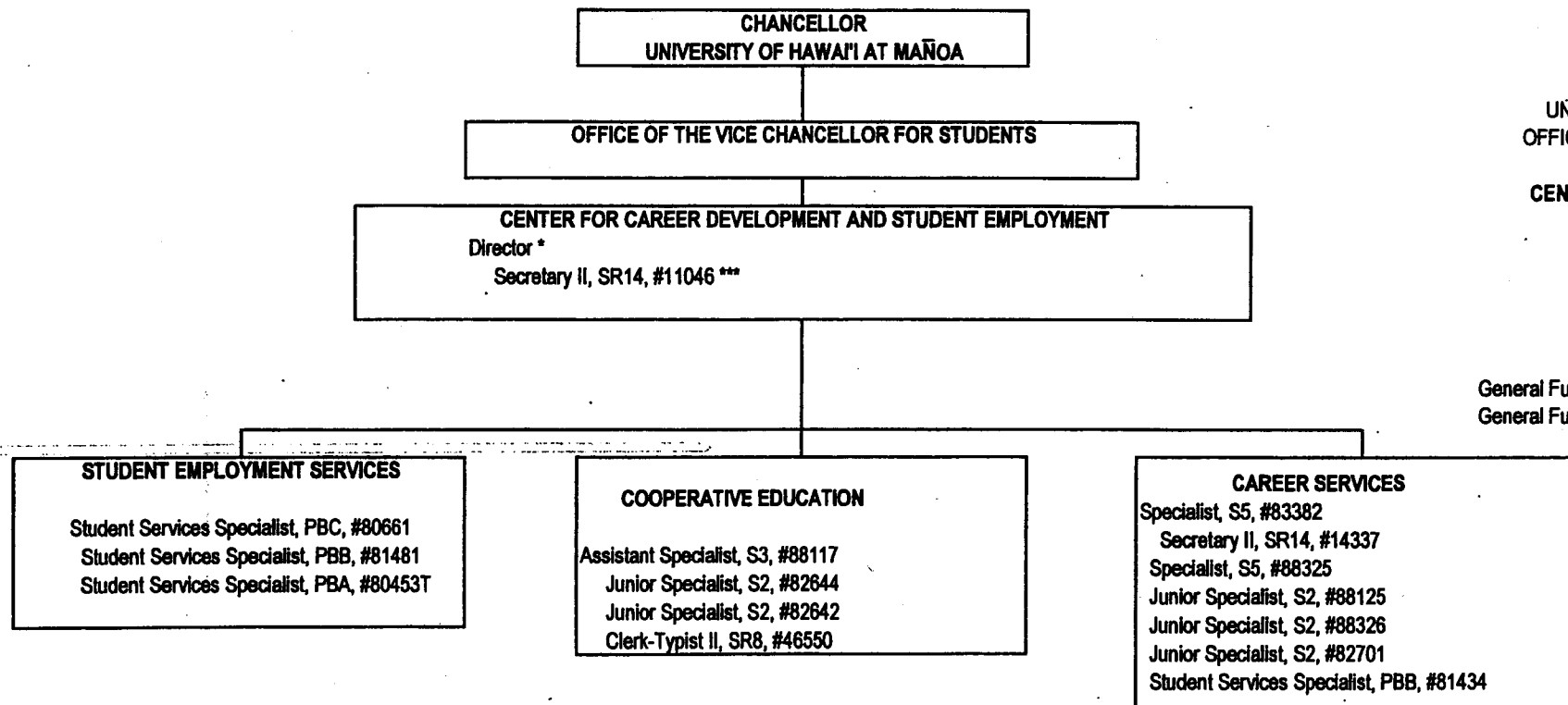
* New, position number to be determined
**new classification; subject to classification
***To be redescribed

APPROVED BY THE UNIVERSITY
BOARD OF REGENTS

FEB 17 2005

Date





STATE OF HAWAII
UNIVERSITY OF HAWAII
OFFICE OF THE CHANCELLOR
UNIVERSITY OF HAWAII AT MAŌOA
OFFICE OF THE VICE CHANCELLOR FOR
STUDENTS
CENTER FOR CAREER DEVELOPMENT
AND STUDENT EMPLOYMENT
PROPOSED

ORGANIZATION CHART
CHART IV-B

General Fund FTE 15.00 (perm)
General Fund FTE 1.00 (auth perm)

* new, position number to be determined
*** to be redescribed

APPROVED BY THE UNIVERSITY
BOARD OF REGENTS
FEB 17 2005
Date

APPROVED BY THE UNIVERSITY
BOARD OF REGENTS

FEB 17 2005

Date

CHANCELLOR
UNIVERSITY OF HAWAII AT MAŌOA

OFFICE OF THE VICE CHANCELLOR FOR STUDENTS

STUDENT EQUITY, EXCELLENCE, AND DIVERSITY

Director of Minority Students, #89298
Administrative Officer, PBB, #81088
Specialist, S5, #82594
Educational Specialist, PBB, #81063
Educational Specialist, PBB #81904

WOMEN'S CENTER

Junior Sp, S2, #84581

COLLEGE OPPORTUNITIES PROGRAM

Assistant Sp, S3, #83548
Clerk-Typist III, SR10, #23086
Student Services Sp, PBB, #80606

CHILDREN'S CENTER

Early Childhood Sp, PBB, #80232
Administrative Officer, PBA, #80739 (R)
Early Childhood Sp, PBB, #80029
Early Childhood Sp, PBB, #80109
Early Childhood Sp, PBA, #80233
Early Childhood Sp, PBB, #80234T
Early Childhood Sp, PBA, #80424T
Early Childhood Sp, PBB, #80455T
Early Childhood Sp, PBB, #80541 (R)
Early Childhood Sp, PBA, #80588 (R)
Early Childhood Sp, PBB, #80611 (R)

OFFICE of MULTICULTURAL
STUDENT SERVICES

Educational Sp, PBB, #80517
Clerk-Typist II, SR8, #43052
Student Services Sp, PBA, #81799
Student Services Sp, PBA, #81801
Associate Sp, S4, #82281

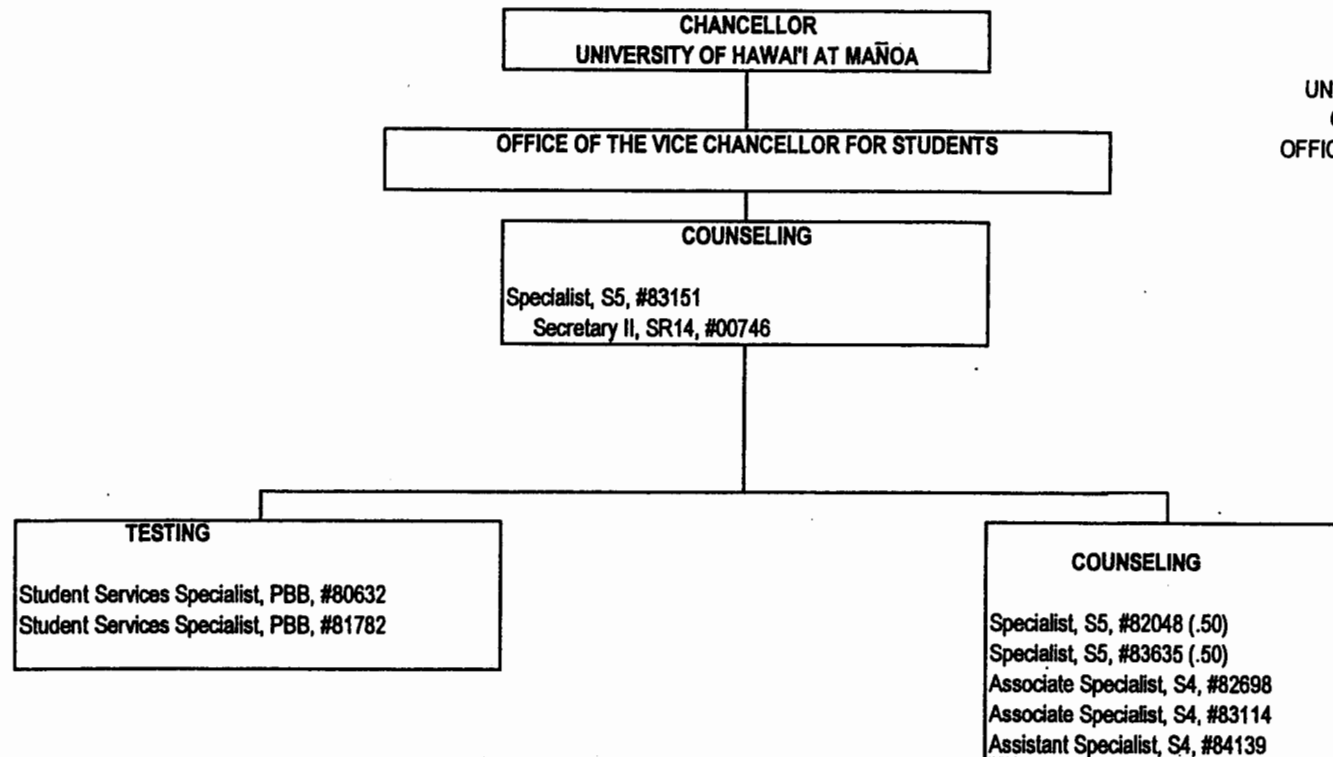
STATE OF HAWAII
UNIVERSITY OF HAWAII
OFFICE OF THE CHANCELLOR
UNIVERSITY OF HAWAII AT MAŌOA
OFFICE OF THE VICE CHANCELLOR FOR
STUDENTS
STUDENT EQUITY, EXCELLENCE, AND DIVERSITY
PROPOSED

ORGANIZATION CHART
CHART IV-C

General Fund FTE	24.00 (perm)
General Fund FTE	3.00 (auth temp)
Revolving Fund FTE	4.00

KOKUA

Educational Sp, PBC #80666
Administrative Off, PBA, #77032
Educational Sp, PBB, #80636
Educational Sp, PBB, #80608
Educational Sp, PBB, #81566
Educational Sp, PBA, #81102



STATE OF HAWAII
UNIVERSITY OF HAWAII
UNIVERSITY OF HAWAII AT MAŌOA
OFFICE OF THE CHANCELLOR
OFFICE OF THE VICE CHANCELLOR FOR
STUDENTS
COUNSELING
PROPOSED

ORGANIZATION CHART
CHART IV-D

General Fund FTE 8.00

APPROVED BY THE UNIVERSITY
BOARD OF REGENTS
FEB 17 2005
Date

APPROVED BY THE UNIVERSITY
BOARD OF REGENTS

FEB 17 2005

Date

CHANCELLOR
UNIVERSITY OF HAWAII AT MAŌOA

OFFICE OF THE VICE CHANCELLOR FOR STUDENTS

HEALTH & WELLNESS
Specialist, S5, #82341

PHARMACY

Pharmacist, PBC, #81877 (.25) (R)

ADMINISTRATIVE SUPPORT

Assistant Specialist, S3, #83539
Secretary II, SR14, #15353
Account Clerk III, SR11, #21512
Medical Records Technician VI, SR13, #03723
Clerk-Typist III, SR10, #25410 (R)
Cashier I, SR10, #112430 (R)

MEDICAL STAFF

Registered Professional Nurse V,
SR24, #41706 (R)
Specialist, S5, #84576 (.50) (R)
Specialist, S5, #84576A (.50) (R)
Specialist, S5, #83261 (.50) (R)
Specialist, S5, #83397 (.50) (R)

NURSING STAFF

Registered Professional Nurse IV, SR22, #10312 (R)
Registered Professional Nurse III, SR20, #13616 (R)
Registered Professional Nurse III, SR20, #22672 (R)
Registered Professional Nurse III, SR20, #13615 (R)
Registered Professional Nurse III, SR20, #18091 (R)

HEALTH EDUCATION
AND PROMOTION

Associate Specialist, S4, #88317

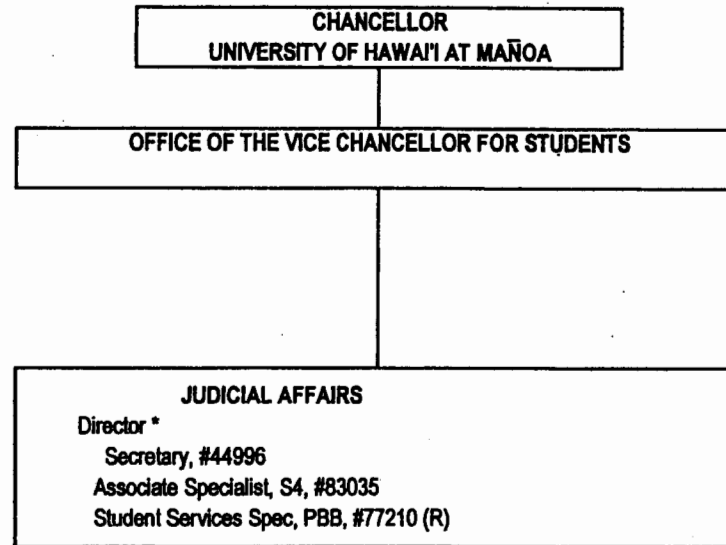
LABORATORY

Medical Technologist, PBB,
#80671 (.50)

STATE OF HAWAII
UNIVERSITY OF HAWAII
UNIVERSITY OF HAWAII AT MAŌOA
OFFICE OF THE CHANCELLOR
OFFICE OF THE VICE CHANCELLOR FOR
STUDENTS
HEALTH AND WELLNESS
PROPOSED

ORGANIZATION CHART
CHART IV-E

General Fund FTE 6.50
Revolving Fund FTE 10.75



STATE OF HAWAII
UNIVERSITY OF HAWAII
UNIVERSITY OF HAWAII AT MAŌOA
OFFICE OF THE CHANCELLOR
OFFICE OF THE VICE CHANCELLOR FOR
STUDENTS
JUDICIAL AFFAIRS
PROPOSED

ORGANIZATION CHART
CHART IV-F

General Fund FTE	3.00
Revolving Fund FTE	1.00

* New, position number to be determined

APPROVED BY THE UNIVERSITY
BOARD OF REGENTS
FEB 17 2005

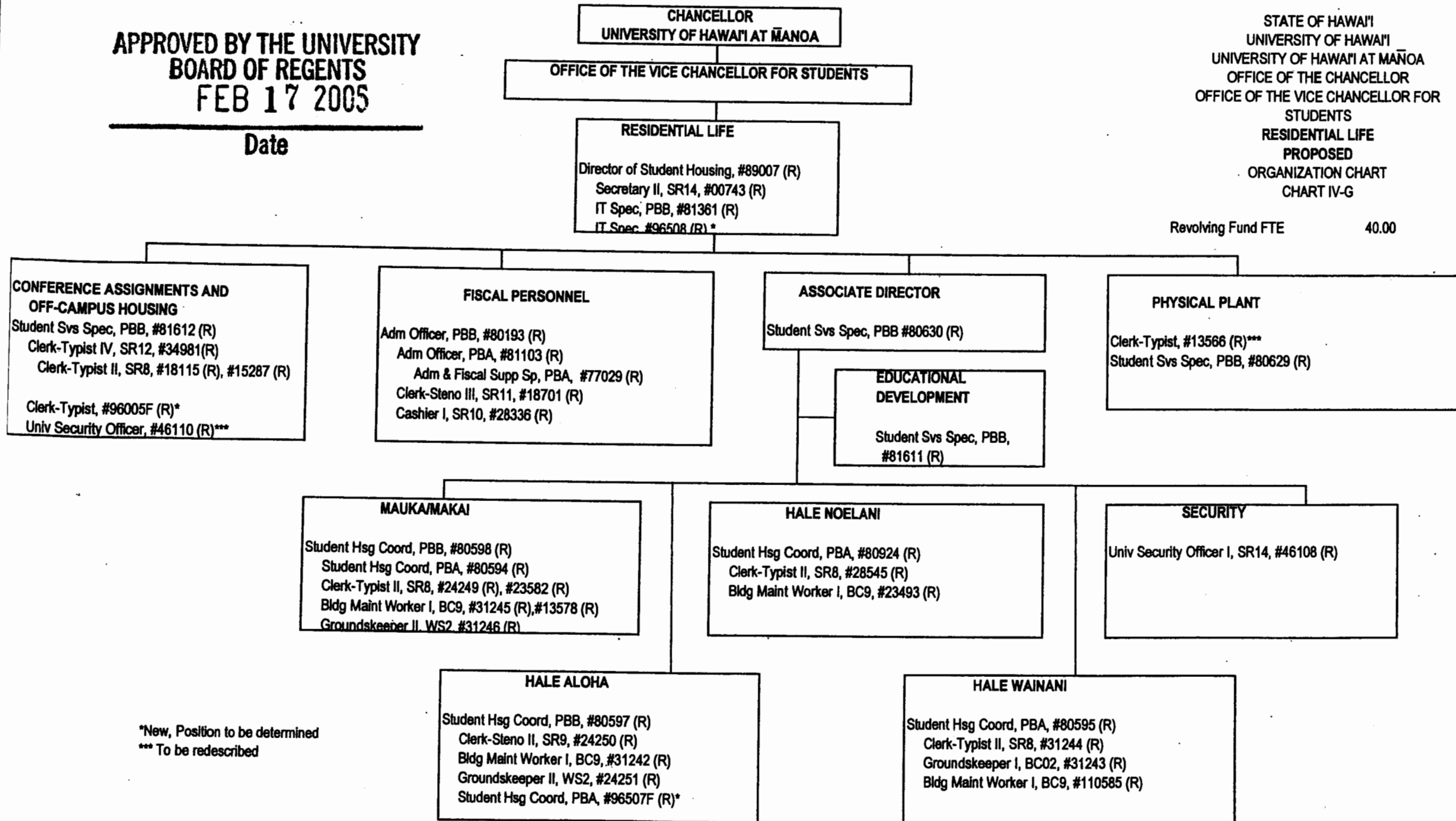
Date

APPROVED BY THE UNIVERSITY
BOARD OF REGENTS
FEB 17 2005

Date

STATE OF HAWAII
UNIVERSITY OF HAWAII
UNIVERSITY OF HAWAII AT MANOA
OFFICE OF THE CHANCELLOR
OFFICE OF THE VICE CHANCELLOR FOR
STUDENTS
RESIDENTIAL LIFE
PROPOSED
ORGANIZATION CHART
CHART IV-G

Revolving Fund FTE 40.00



*New, Position to be determined
*** To be redescribed

**OFFICE OF THE CHANCELLOR
UNIVERSITY OF HAWAI'I at MĀNOA**

State of Hawai'i
University of Hawai'i
University of Hawai'i at Mānoa

STUDENT AFFAIRS

Office:
UHM Student Services

OFFICE OF ADMINISTRATIVE SERVICES
Chart IV-A

Chart: IV
[CURRENT]

**OFFICE OF THE DIRECTOR OF STUDENT
EQUITY, EXCELLENCE AND DIVERSITY**
Chart IV-A

Center for Adults
Returning to Education
Chart IV-O

Hawai'i Opportunity
Program in Education
Chart IV-P

Kua'ana Native Hawaiian
Student Dev Svcs
Chart IV-Q

Women's Center
Chart IV-M

College Opportunities
Program
Chart IV-N

KOKUA Program
Chart IV-S

Office of Multicultural
Student Services
Chart IV-R

**OFFICE OF THE DEAN OF STUDENTS
AND STUDENT SERVICES (UHM)**
Chart IV-A

Co-curricular Activities,
Programs and Services
Chart IV-D

Counseling and
Student Development
Center
Chart IV-J

International
Student Services
Chart IV-H

Student Employment and
Cooperative Education
Chart IV-G

Student Housing
Services
Chart IV-E

Career Services
Chart IV-I

Children's Center
Chart IV-L

School and College
Services
Chart IV-F

University Health
Services
Chart IV-K

**OFFICE OF THE DIRECTOR OF UNIVERSITYWIDE
STUDENT AFFAIRS/ASSISTANT TO THE VP**
Chart IV-A

Admissions and
Records
Chart IV-B

Financial Aid Services
Chart IV-C

CHART UPDATED
DATE JUL 01 2004

SUPERSEDED
Date FFB 17 2005

**OFFICE OF THE CHANCELLOR
UNIVERSITY OF HAWAI'I at MĀNOA**

Chancellor, UH-Manoa, #89261

State of Hawai'i
University of Hawai'i
University of Hawai'i at Mānoa

Office:
UHM Student Services

Chart: IV-A
[CURRENT]

STUDENT AFFAIRS*

ADMINISTRATIVE SUPPORT

Director of Student Enr Svcs, #89309
Associate Specialist, S4, #82637

OFFICE OF ADMINISTRATIVE SERVICES

Administrative Officer, PBC, #80146

FISCAL SERVICES

Account Clerk III, SR11, #21426

PERSONNEL SERVICES

Personnel Officer, PBB, #81879
Personnel Clerk V, SR13, #44556

CHART UPDATED

DATE JUL 01 2004

**OFFICE OF THE DIRECTOR OF STUDENT
EQUITY, EXCELLENCE AND DIVERSITY**

Director of Minority Students, #89298
Administrative Officer, PBB, #81088
Specialist, S5, #82594
Educational Specialist, PBB, #81063

**OFFICE OF THE DEAN OF STUDENTS
AND STUDENT SERVICES (UHM)**

Dean of Student Services (UHM), #89133
Secretary III, SR16, #00745
Assistant Specialist, S3, #84173
Assistant Specialist, S3, #83035
Assistant Specialist, S3, #85485
Associate Specialist, S4, #88099
Student Services Spec, PBB, #77210(R)

**OFFICE OF THE DIRECTOR OF UNIVERSITYWIDE
STUDENT AFFAIRS/ASSISTANT TO THE VP**

Supervision temporarily provided by Chancellor, #89261
Secretary II, SR14, #44996

*Temporarily overseen by UHM Chancellor

SUPERSEDED
Date FEB 17 2005

General Funds 17.00
Revolving Funds 1.00

08/11/04

Office:
**UHM Student Services
Admissions and Records**

Chart: IV-B
[CURRENT]

**OFFICE OF THE DIRECTOR OF UNIVERSITYWIDE
STUDENT AFFAIRS/ASSISTANT TO THE VP**

ADMISSIONS AND RECORDS

Specialist, S5, #82630

ADMINISTRATIVE SUPPORT

Secretary II, SR 14, #14866
Student Services Specialist, PBC, #81154 (.3)

ADMISSIONS AND RESIDENCY

Student Services Specialist, PBC, #81154 (.7)
Clerk Supervisor III, SR14, #00748
Clerk IV, SR10, #00772, #12550, #12842, #12843
#13495, #13496, #18009, #26538
#900015
Clerk III, SR8, #900016
Student Services Specialist, PBB, #80626
Student Services Specialist, PBB, #81414
Student Services Specialist, PBB, #80625
Clerk IV, SR10, #11496
Student Services Specialist, PBB, #80530
Student Services Specialist, PBB, #80096
Student Services Specialist, PBB, #81734
Student Services Specialist, PBB, #81071
Student Services Specialist, PBA, #77518
Student Services Specialist, PBA, #77519
Student Services Specialist, PBA, #77520
Student Services Specialist, PBA, #77521

RECORDS AND REGISTRATION

Student Services Specialist, PBC, #81614
Student Services Specialist, PBB, #80658
Clerk Supervisor III, SR14, #17447
Clerk IV, SR10, #00750, #13959, #14863, #14864
#14865(R), #15502, #17450, #21430,
#40006
Clerk III, SR8, #13494 (R), #26539(R)
Scheduler, SR20, #05837

INFORMATION AND COMPUTER SERVICES

IT Specialist, PBB, #81070
IT Specialist, PBB, #80017
Clerk Supervisor II, SR12, #22322
Clerk IV, SR10, #40004, #40005, #15501, #900159
Clerk-Stenographer II, SR9, #22321
Clerk III, SR8, #40003
IT Specialist, PBB, #80018

CHART UPDATED

DATE JUL 01 2004

SUPERSEDED

Date FEB 17 2005

General Funds 48.00
Revolving Funds 3.00

Office:

UHM Student Services
Financial Aid Services

Chart: IV-C
[CURRENT]

**OFFICE OF THE DIRECTOR OF UNIVERSITYWIDE
STUDENT AFFAIRS/ASSISTANT TO THE VP**

FINANCIAL AID SERVICES

Student Services Specialist, PBC, #77250

ADMINISTRATIVE SUPPORT

Secretary II, SR14, #05737

CHART UPDATED

DATE JUL 01 2004

PROGRAM SPECIALISTS

Student Services Specialist, PBB, #81913
Student Services Specialist, PBB, #81608
Student Services Specialist, PBB, #81607
Student Services Specialist, PBB, #81606
Student Services Specialist, PBB, #81609
Student Services Specialist, PBB, #81151
Student Services Specialist, PBB, #80922

DATA AND CLERICAL SUPPORT SECTION

Clerical Supervisor III, SR14, #17599
Clerk-Typist III, SR10, #16967
Clerk-Typist III, SR10, #15265
Clerk-Typist III, SR10, #17600
Clerk-Typist III, SR10, #10929
Clerk III, SR8, #44397

SUPERSEDED

Date FEB 17 2005

**OFFICE OF THE DEAN OF STUDENTS AND STUDENT SERVICES
(UHM)**

CO-CURRICULAR ACTIVITIES, PROGRAMS & SERVICES

Director of Bureau of Student Activities, #89190

State of Hawai'i
University of Hawai'i
University of Hawai'i at Mānoa

Office:

**UHM Student Services
Co-Curricular Activities,
Programs and Services**

Chart: IV-D
[CURRENT]

ADMINISTRATIVE AND FISCAL SUPPORT

Administrative Officer, PBB, #80163 (R)
Adm/Fiscal Support Specialist, PBA, #80649 (R)
Account Clerk IV, SR13, #25700 (R)
Account Clerk III, SR11, #45362 (R)

CLERICAL SUPPORT

Secretary II, SR14, #13587
Clerk-Typist III, SR10, #28134 (R)
Clerk-Typist II, SR08, #25699 (R)
Clerk II, SR06, #25698 (R)

INTRAMURAL SPORTS

Specialist, S5, #83512
Specialist, S5, #85083
Junior Specialist, S2, #83788
Clerk-Typist II, SR08, #26460

**STUDENT LEADERSHIP DEVELOPMENT
& CO-CURRICULAR INTERVENTIONS
PROGRAMS**

Associate Specialist, S4, #82864
Junior Specialist, S2, #82573
Assistant Specialist, S3, #82597
Student Services Specialist, PBB, #77071
Student Services Specialist, PBB, #81134
Student Services Specialist, PBB, #81510(R)
Student Services Specialist, PBB, #80025(R)
Publication Specialist, PBB, #81186(R)
Student Services Specialist, PBB, #81137(R)
Junior Specialist, S2, #88334(R)
Publication Spec, PBA, #81486(R)
Publication Spec, PBA, #81488(R)
Publication Spec, PBA, #81506(R)

**OPERATIONAL PROGRAMS,
FACILITIES AND SERVICES**

Junior Specialist, S2, #88328(R)
Student Services Specialist, PBB, #80660(R)
Building Maintenance Worker I, BC09, #28597(R)
Janitor II, BC02, #25329(R), #25392(R),
#44089(R), #46560(R)
Bldg & Grnds Util Worker, #BC05, #45379(R),
#44085(R), #44109(R)
Student Services Specialist, PBB, #80631(R)
Student Services Specialist, PBA, #80942(R)
Assistant Specialist, S3, #88765(R)

CHART UPDATED

DATE JUL 01 2004

SUPERSEDED
Date FEB 17 2005

General Funds 11.00
Revolving Funds 28.00

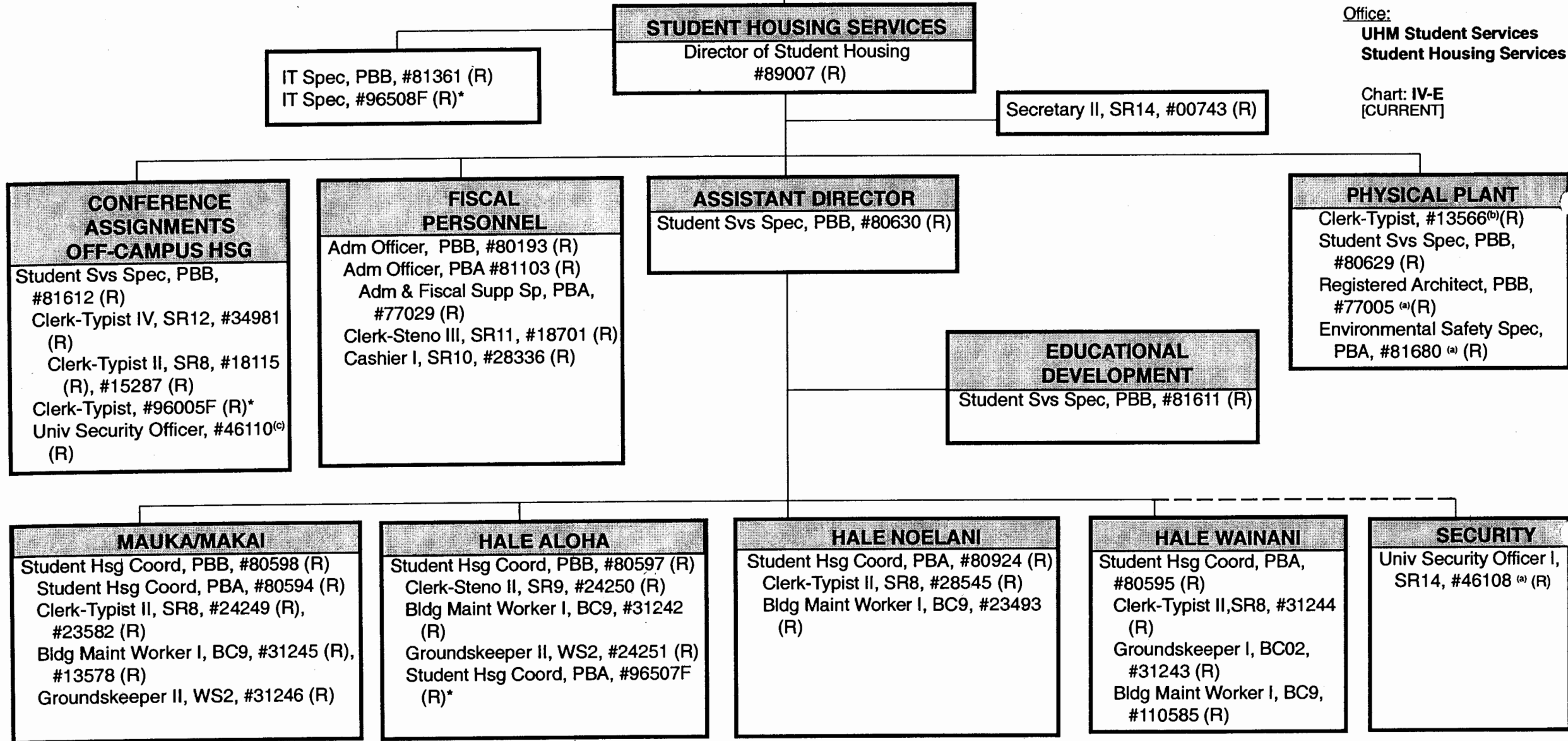
08/11/04

OFFICE OF THE DEAN OF STUDENTS AND STUDENT SERVICES (UHM)

State of Hawai'i
University of Hawai'i
University of Hawai'i at Mānoa

Office:
UHM Student Services
Student Housing Services

Chart: IV-E
[CURRENT]



(a) Student Housing Services position assigned to and supervised by Campus Operations
(b) Formerly classified as Clerk-Typist; position to be redescribed
(c) Formerly classified as Univ Security Officer; position to be redescribed
*Pending Establishment

SUPERSEDED
Date FEB 17 2005 **CHART UPDATED**
DATE JUL 01 2004

Revolving Funds 41.00

Office:
UHM Student Services
School and College Services

Chart: IV-F
[CURRENT]

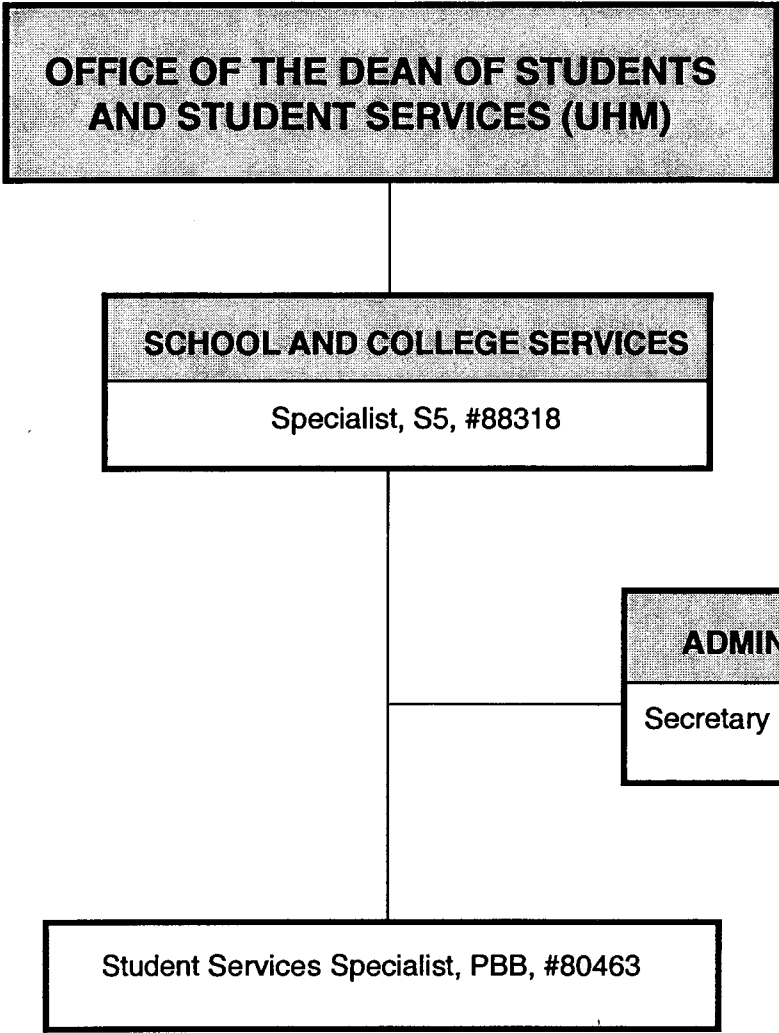


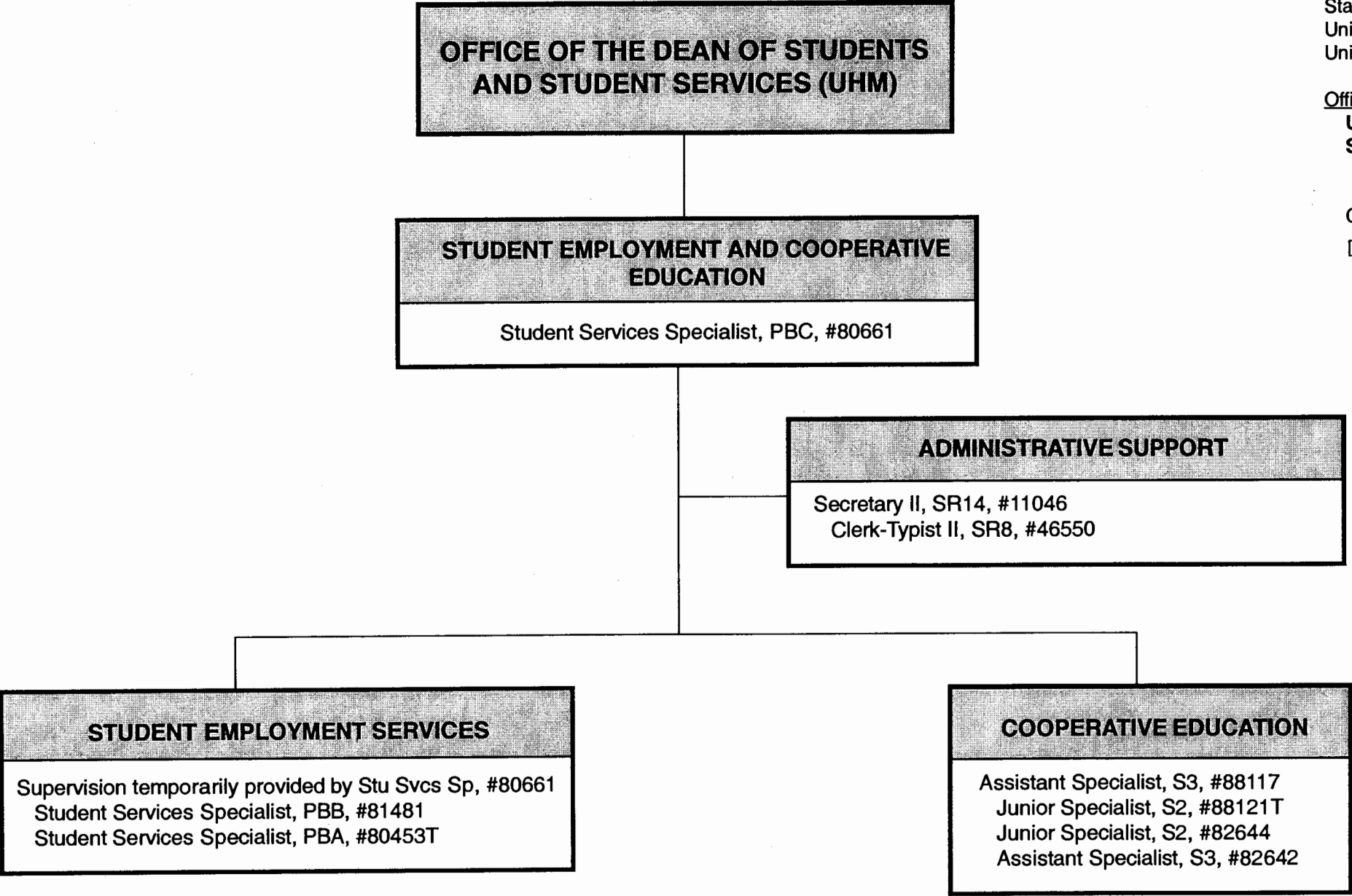
CHART UPDATED

DATE JUL 01 2004

SUPERSEDED
Date FEB 17 2005

Office:
UHM Student Services
Student Employment and
Cooperative Education

Chart: IV-G
[CURRENT]



SUPERSEDED
Date FEB 17 2005

CHART UPDATED
DATE JUL 01 2004

General Funds 7.00 (perm)
General Funds 2.00 (auth temp)

Office:
UHM Student Services
International Student
Services

Chart: IV-H
[CURRENT]

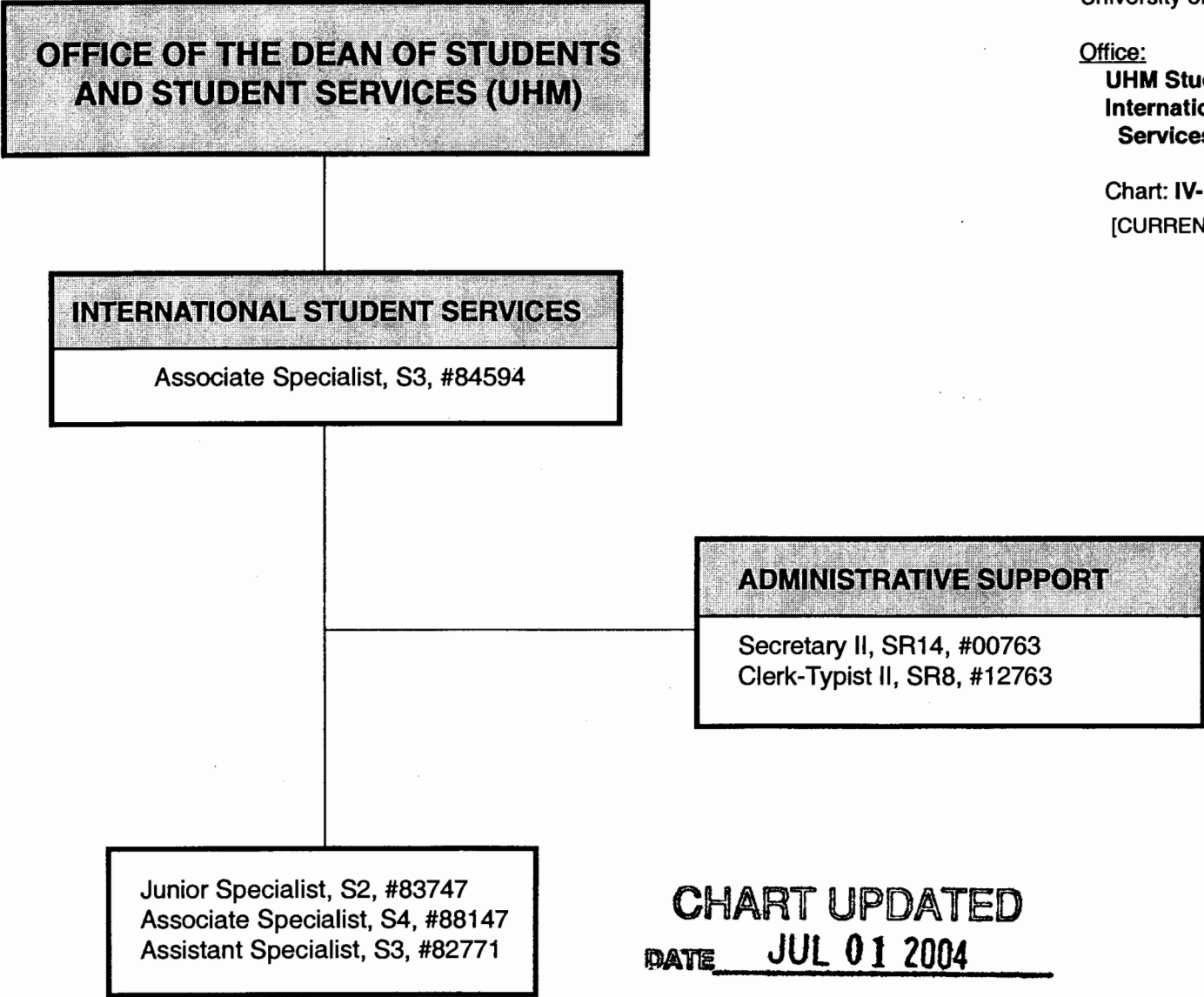


CHART UPDATED
DATE JUL 01 2004

SUPERSEDED
Date FEB 17 2005

General Funds 6.00*

*2.00 FTE (#88126, #88327 for Study Abroad
transferred to Academic Affairs)

**OFFICE OF THE DEAN OF STUDENTS
AND STUDENT SERVICES (UHM)**

CAREER SERVICES

Specialist, S5, #83382

ADMINISTRATIVE SUPPORT

Secretary II, SR14, #14337

Junior Specialist, S2, #88125

Specialist, S5, #88325

Junior Specialist, S2, #88326

Junior Specialist, S2, #82701

Student Services Specialist, PBB, #81434

State of Hawai'i
University of Hawai'i
University of Hawai'i at Mānoa

Office:
UHM Student Services
Career Services

Chart: IV-I
[CURRENT]

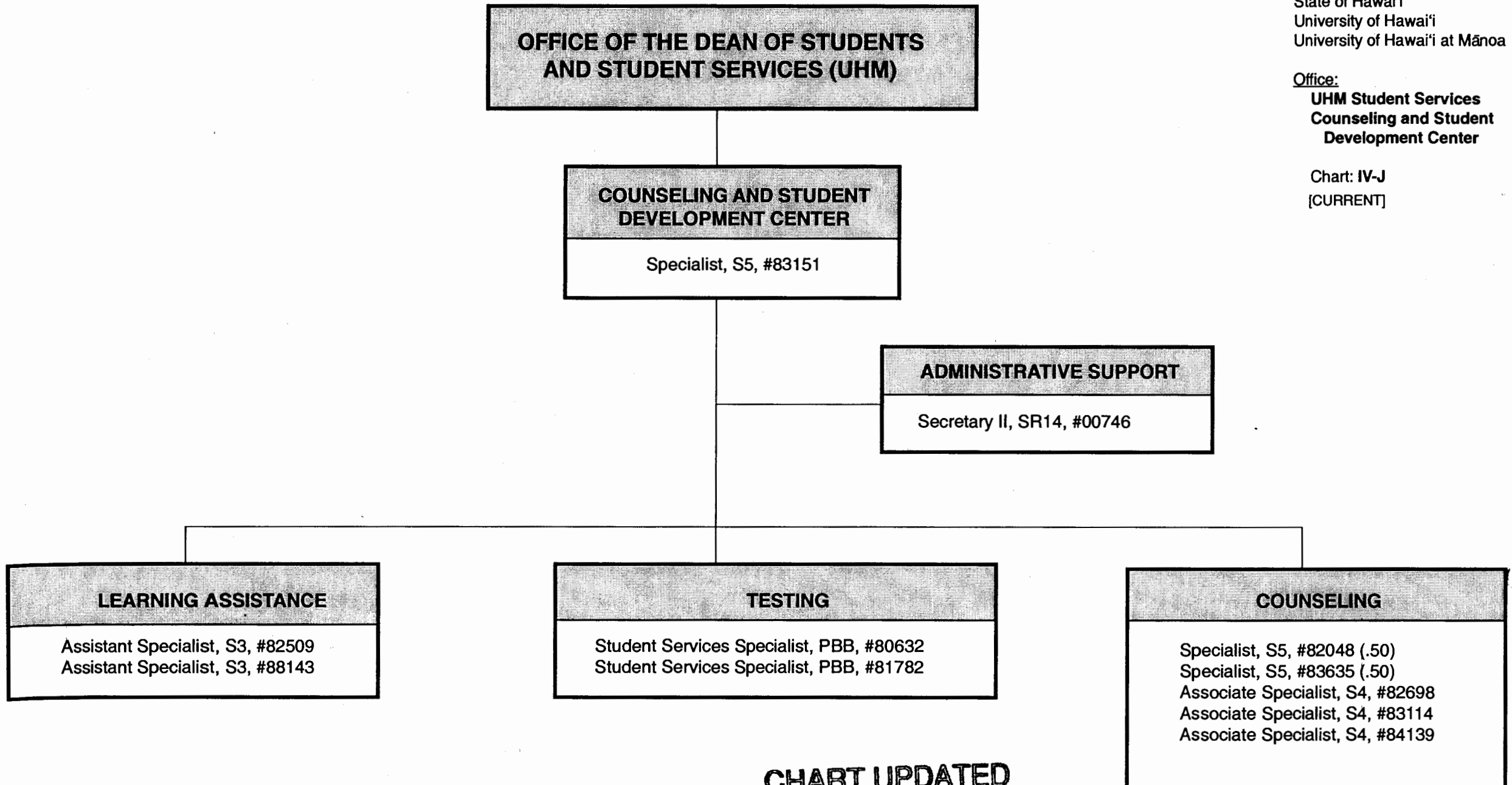
SUPERSEDED
Date FEB 17 2005

CHART UPDATED
DATE JUL 01 2004

General Funds 7.00

Office:
**UHM Student Services
Counseling and Student
Development Center**

Chart: **IV-J**
[CURRENT]



SUPERSEDED
Date FEB 17 2005

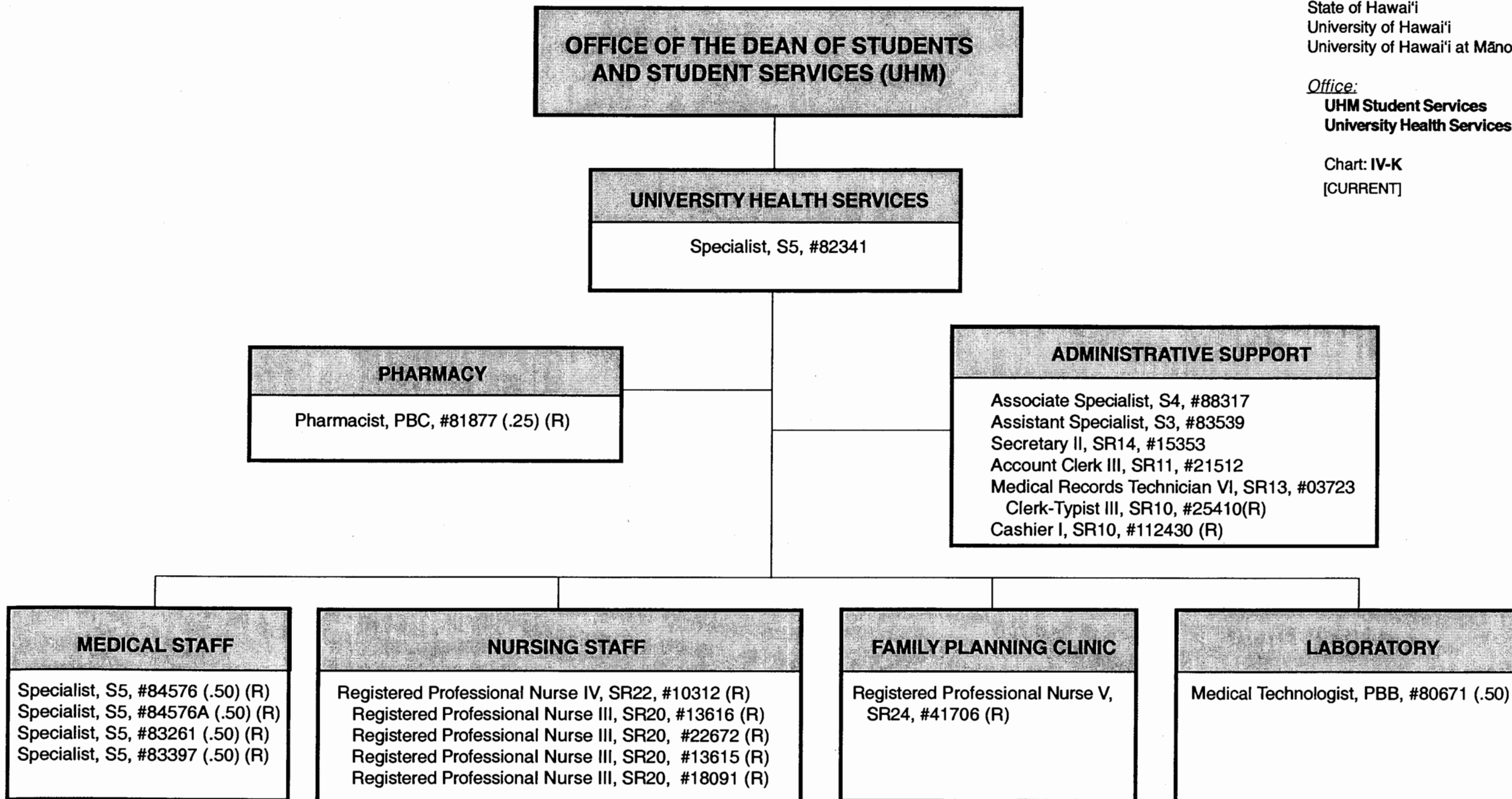
CHART UPDATED
DATE JUL 01 2004

General Funds

10.00

Office:
UHM Student Services
University Health Services

Chart: IV-K
[CURRENT]



SUPERSEDED
Date FEB 17 2005

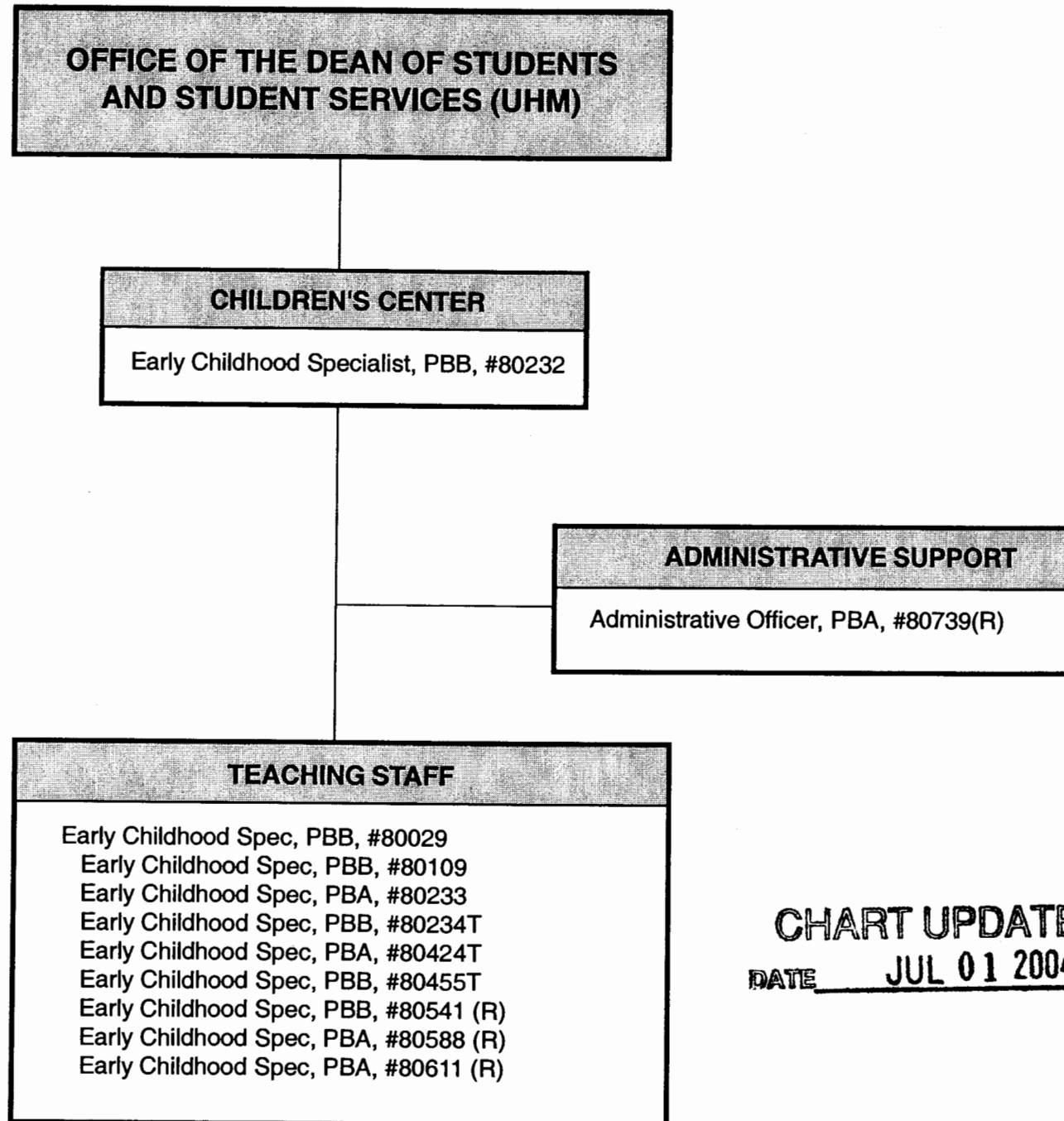
CHART UPDATED
DATE JUL 01 2004

General Funds 6.50
Revolving Funds 10.25

Office:

**UHM Student Services
Children's Center**

Chart: IV-L
[CURRENT]



SUPERSEDED
Date FEB 17 2005

CHART UPDATED
DATE JUL 01 2004

General Funds	4.00 (perm)
General Funds	3.00 (auth temp)
Revolving Funds	4.00

**OFFICE OF THE DIRECTOR OF STUDENT
EQUITY, EXCELLENCE AND DIVERSITY**

WOMEN'S CENTER

Junior Specialist, S2, #84581

State of Hawai'i
University of Hawai'i
University of Hawai'i at Mānoa

Office:

**UHM Student Services
Women's Center**

Chart: **IV-M**
[CURRENT]

CHART UPDATED

DATE JUL 01 2004

SUPERSEDED

Date FEB 17 2005

General Funds

1.00

**OFFICE OF THE DIRECTOR OF STUDENT
EQUITY, EXCELLENCE AND DIVERSITY**

COLLEGE OPPORTUNITIES PROGRAM
Assistant Specialist, S3, #83548

ADMINISTRATIVE SUPPORT
Clerk Typist III, SR10, #23086

Student Services Specialist, PBB, #80628
Student Services Specialist, PBB, #80606

State of Hawai'i
University of Hawai'i
University of Hawai'i at Mānoa

Office:
UHM Student Services
College Opportunities
Program

Chart: IV-N
[CURRENT]

CHART UPDATED
DATE JUL 01 2004

SUPERSEDED
Date FEB 17 2005

General Funds 4.00

**OFFICE OF THE DIRECTOR OF STUDENT
EQUITY, EXCELLENCE AND DIVERSITY**

**CENTER FOR ADULTS
RETURNING TO EDUCATION**

State of Hawai'i
University of Hawai'i
University of Hawai'i at Mānoa

Office:
UHM Student Services
Center for Adults
Returning to Education

Chart: IV-O
[CURRENT]

CHART UPDATED
DATE JUL 01 2004

SUPERSEDED
Date FEB 17 2005

**OFFICE OF THE DIRECTOR OF STUDENT
EQUITY, EXCELLENCE AND DIVERSITY**

**HAWAI'I OPPORTUNITY PROGRAM
IN EDUCATION**

State of Hawai'i
University of Hawai'i
University of Hawai'i at Mānoa

Office:

**UHM Student Services
Hawai'i Opportunity
Program in Education**

Chart: **IV-P**
[CURRENT]

CHART UPDATED

DATE JUL 01 2004

SUPERSEDED

Date FEB 17 2005

**OFFICE OF THE DIRECTOR OF STUDENT
EQUITY, EXCELLENCE AND DIVERSITY**

KUA'ANA NATIVE HAWAIIAN STUDENT DEVELOPMENT SERVICES
Educational Specialist, PBB, #81904 Student Services Specialist, PBA, #81919

State of Hawai'i
University of Hawai'i
University of Hawai'i at Mānoa

Office:
Kua'ana Native Hawaiian
Student Development Svcs

Chart: IV-Q
[CURRENT]

CHART UPDATED
DATE JUL 01 2004

SUPERSEDED
Date FEB 17 2005

General Funds 2.00

**OFFICE OF THE DIRECTOR OF STUDENT
EQUITY, EXCELLENCE AND DIVERSITY**

**OFFICE OF MULTICULTURAL
STUDENT SERVICES**

Educational Specialist, PBB, #80517

ADMINISTRATIVE SUPPORT

Clerk-Typist II, SR8, #43052

Associate Specialist, S4, #82281

Student Services Specialist, PBA, #81799

Student Services Specialist, PBA, #81801

State of Hawai'i
University of Hawai'i
University of Hawai'i at Mānoa

Office:

**UHM Student Services
Office of Multicultural
Student Services**

Chart: IV-R
[CURRENT]

CHART UPDATED

DATE JUL 01 2004

SUPERSEDED
Date FEB 17 2005

General Funds

5.00

08/04

**OFFICE OF THE DIRECTOR OF STUDENT
EQUITY, EXCELLENCE AND DIVERSITY**

KOKUA PROGRAM
Educational Specialist, PBC, #80666

- Educational Specialist, PBB, #80636
- Educational Specialist, PBB, #80608
- Educational Specialist, PBB, #81566
- Educational Specialist, PBA, #81102
- Administrative Officer, PBA, #77032

State of Hawai'i
University of Hawai'i
University of Hawai'i at Mānoa

Office:
UHM Student Services
KOKUA Program

Chart: IV-S
[CURRENT]

CHART UPDATED
DATE JUL 01 2004

SUPERSEDED
Date FEB 17 2005

General Funds 6.00