

STATE OF HAWAII
UNIVERSITY OF HAWAII
COMMUNITY COLLEGES
HONOLULU COMMUNITY COLLEGE

Organization Chart

Chart I

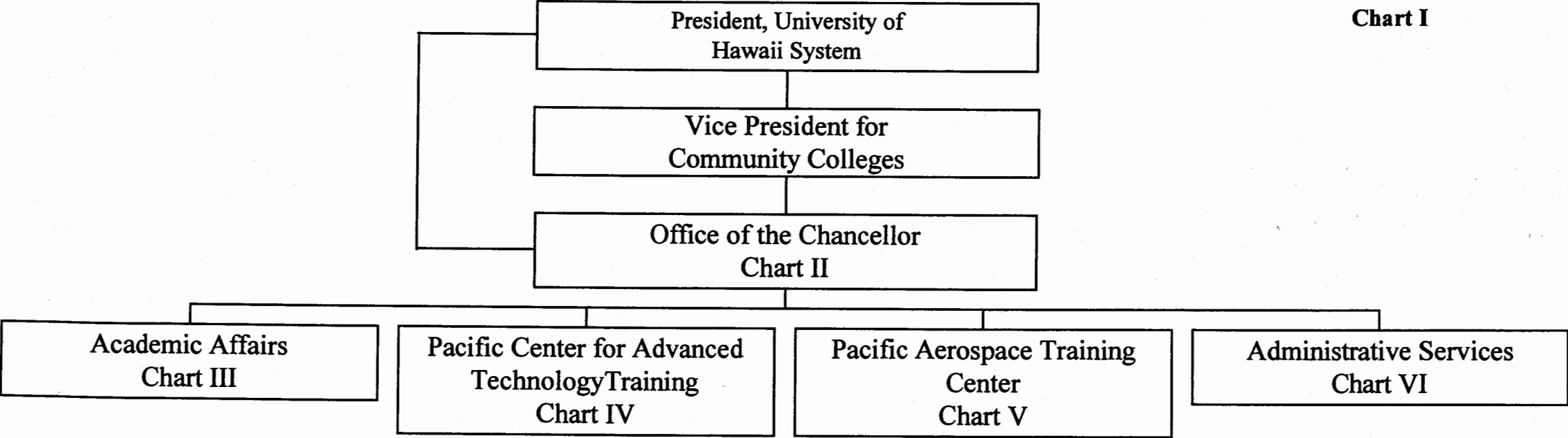


CHART UPDATED
JUL - 1 2005

DATE

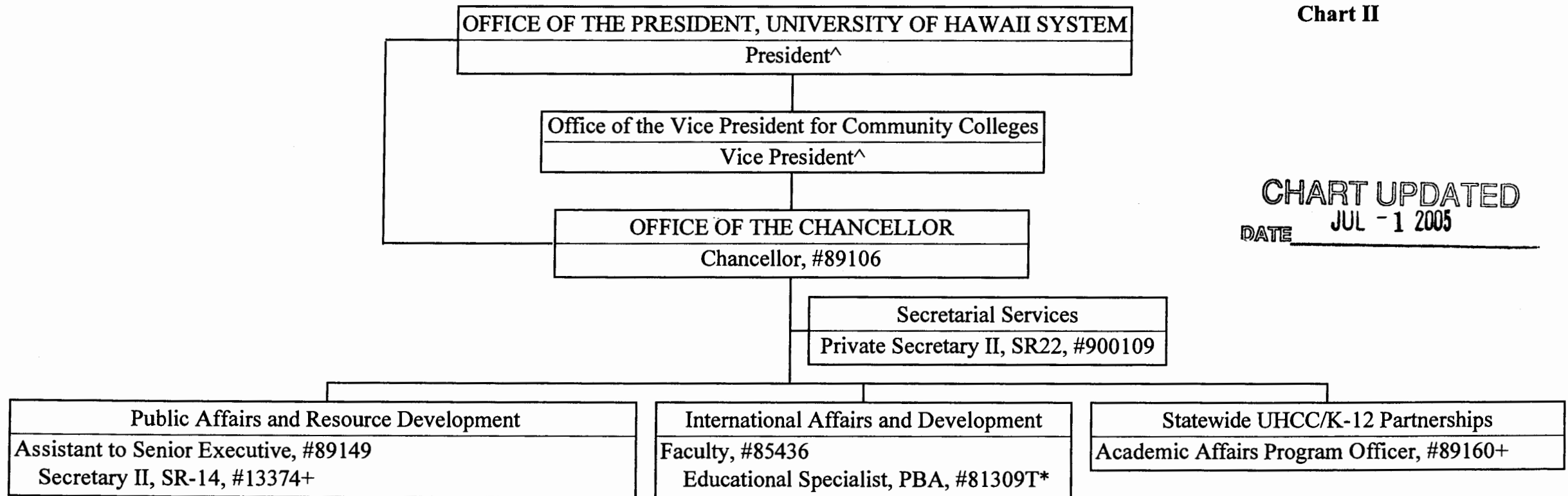
	<u>Perm</u>	<u>Temp</u>
General Fund	286.00	7.00
(B) Special Funds	19.00	

STATE OF HAWAII
UNIVERSITY OF HAWAII
COMMUNITY COLLEGES
HONOLULU COMMUNITY COLLEGE
OFFICE OF THE CHANCELLOR

Organization Chart

Chart II

CHART UPDATED
DATE JUL - 1 2005



^ Excluded from position count this chart

* Temporary Position

+ Position to be redescribed

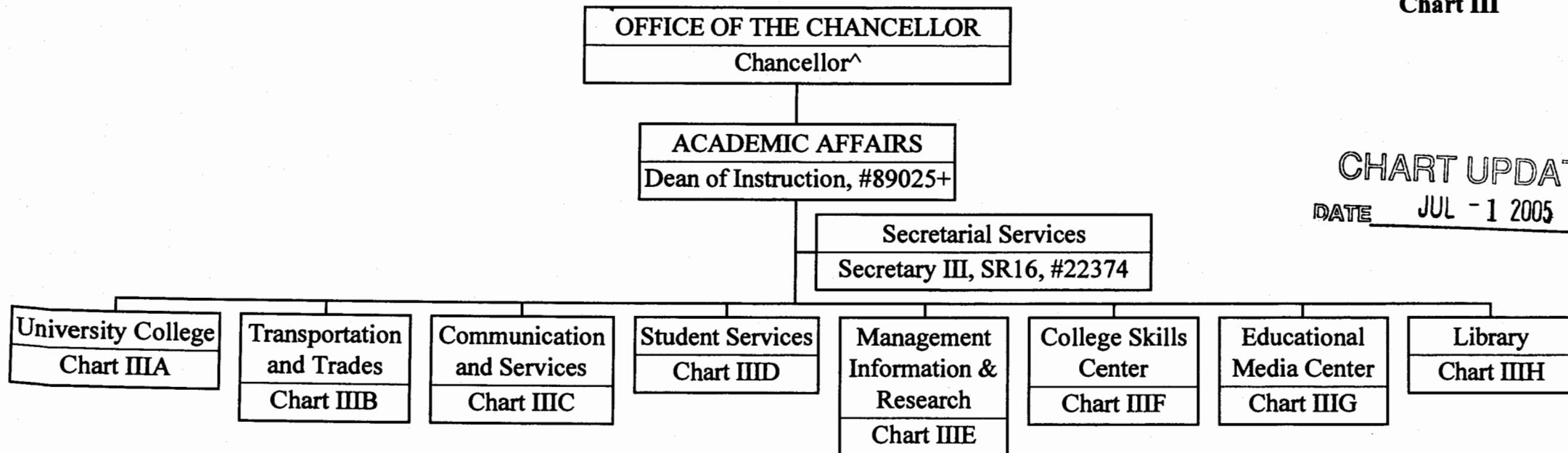
	<u>Perm</u>	<u>Temp</u>
General Fund	6.00	1.00

**STATE OF HAWAII
UNIVERSITY OF HAWAII
COMMUNITY COLLEGES
HONOLULU COMMUNITY COLLEGE
ACADEMIC AFFAIRS**

Organization Chart

Chart III

CHART UPDATED
DATE JUL - 1 2005



^ Excluded from position count this chart
+ Position to be redescribed

General Fund Perm
2.00

**STATE OF HAWAII
UNIVERSITY OF HAWAII
COMMUNITY COLLEGES
HONOLULU COMMUNITY COLLEGE
ACADEMIC AFFAIRS**

Organization Chart

Chart IIIA

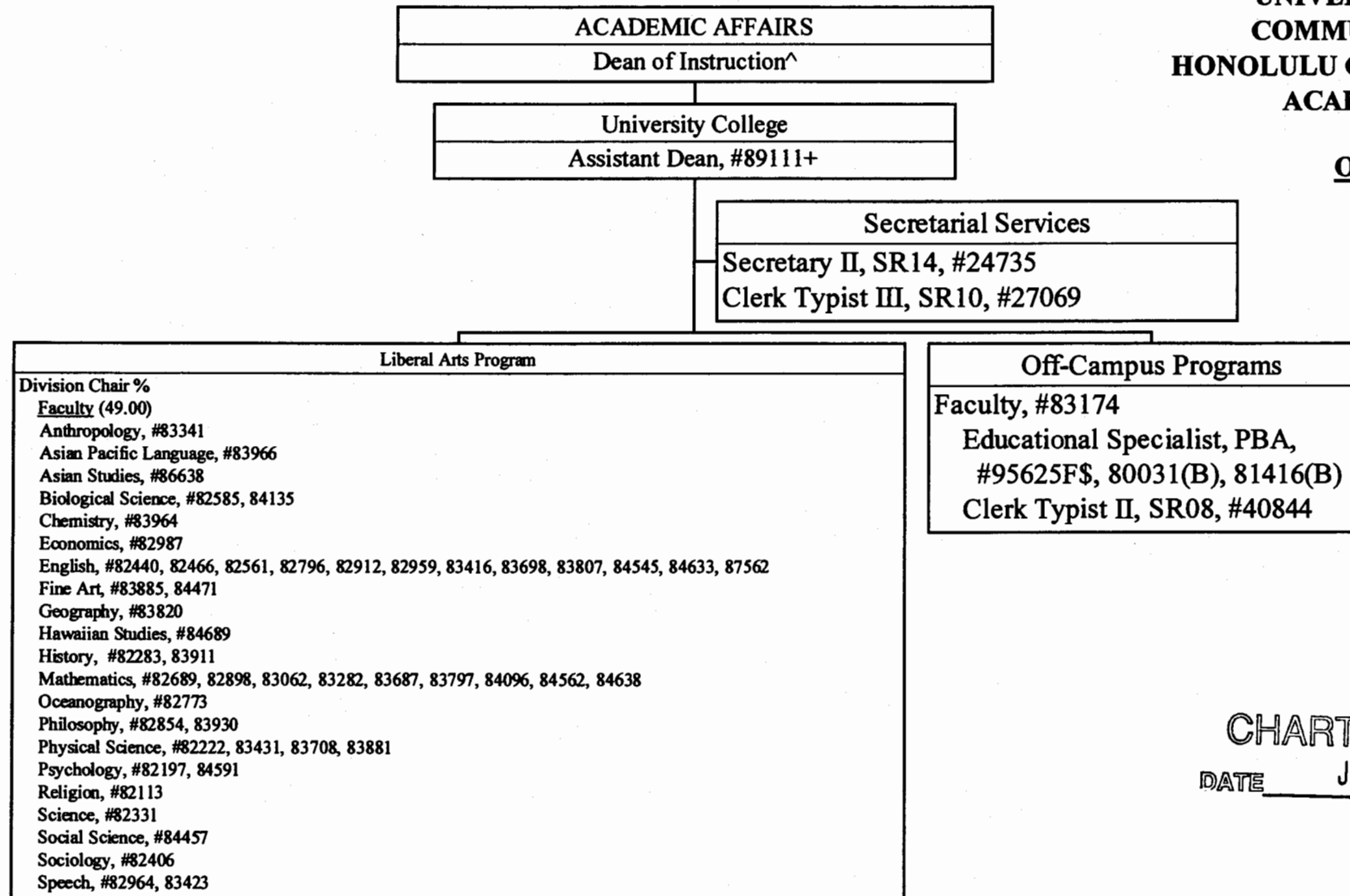


CHART UPDATED

DATE JUL - 1 2005

- [^] Excluded from position count this chart
- ⁺ To be redescribed
- % Division Chair is appointed from any faculty position in the College.
Multiple Division Chairs may be appointed but each position in the
Division has only one immediate supervisor.
- \$ To be established

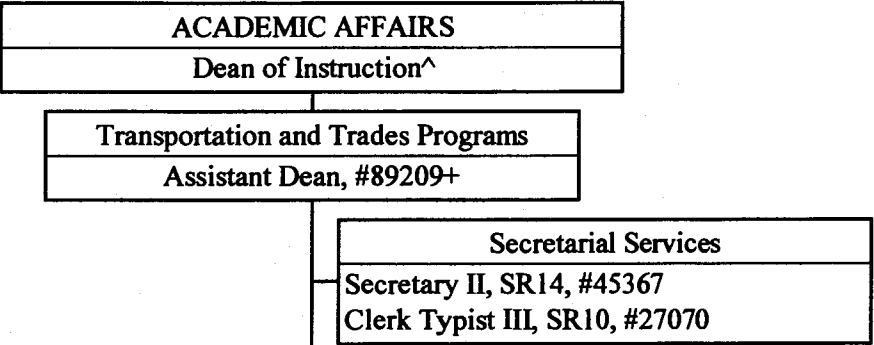
	Perm
General Fund	55.00
(B) Special Funds	2.00

STATE OF HAWAII
UNIVERSITY OF HAWAII
COMMUNITY COLLEGES
HONOLULU COMMUNITY COLLEGE
ACADEMIC AFFAIRS

Organization Chart

Chart IIIB

CHART UPDATED
DATE JUL - 1 2005



Transportation and Trades Programs
Division Chair %
Faculty (31.00)
Apprenticeship and Applied Trades, #83298, 87152
Clerk Typist III, SR10, #14215
Autobody and Repair and Painting, #84405, 86667
Automotive Mechanics Technology, #83725, 83801, 84064, 84410, 84586, 84884
Boat Maintenance and Repair, #84688, 86927
Educational Specialist, PBB, #80652+@, 81182+@
Carpentry, #82384, 83167
Construction Academy, #96626F\$
Cooperative Education, #82444, 83604, 87168, 93626F\$
Diesel Mechanics Technology, #84480
Drafting Technology, #82092, 82956
Electrical Installation and Maintenance Technology, #82757, 83368
Fire and Environmental Emergency Response, #83639
Occupational and Environmental Safety Management, #83673
Refrigeration and Air Conditioning, #82422, 82518
Sheet Metal and Plastics, #84368
Welding, #83212, 84660
Educational Specialist, PBB, #81561, 81991(B)+
Educational Specialist, PBA, #81562
Educational Specialist, PBA, #96628F\$

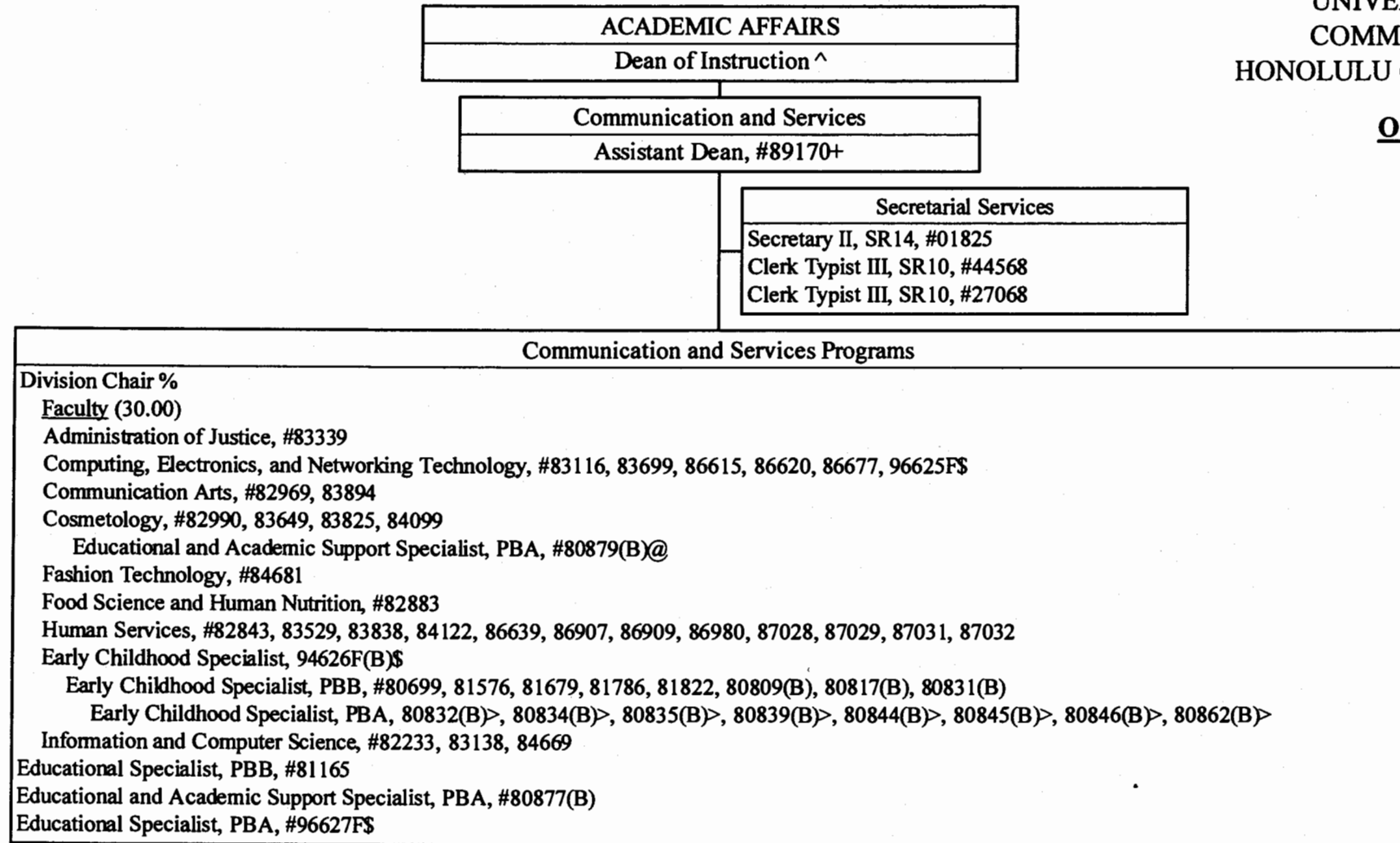
- ^ Excluded from position count this chart
- + To be redescribed
- % Division Chair is appointed from any faculty position in the College.
Multiple Division Chairs may be appointed but each position in the
Division has only one immediate supervisor.
- @ Supervised by one of the faculty positions
- \$ To be established

	Perm
General Fund	40.00
(B) Special Funds	1.00

STATE OF HAWAII
UNIVERSITY OF HAWAII
COMMUNITY COLLEGES
HONOLULU COMMUNITY COLLEGE

Organization Chart

Chart III C



- ^ Excluded from position count this chart
- + To be redescribed
- % Division Chair is appointed from any faculty position in the College.
Multiple Division Chairs may be appointed but each position in the
Division has only one supervisor.
- @ Supervised by one of the faculty positions
- \$ To be established
- > Supervised by one of the senior APT positions

CHART UPDATED
JUL - 1 2005
DATE _____

	<u>Perm</u>
General Fund	41.00
(B) Special Funds	14.00

STATE OF HAWAII
UNIVERSITY OF HAWAII
COMMUNITY COLLEGES
HONOLULU COMMUNITY COLLEGE
ACADEMIC AFFAIRS

Organization Chart

Chart IIID

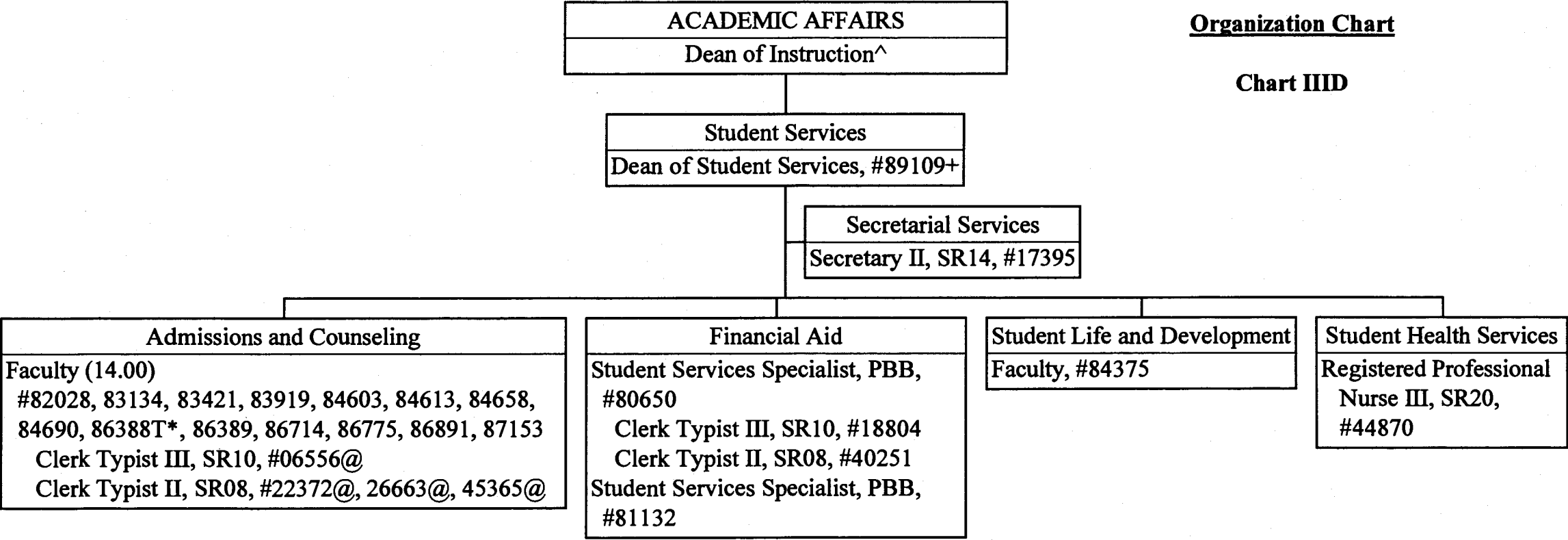


CHART UPDATED
DATE JUL - 1 2005

- ^ Excluded from position count this chart
* Temporary Position
+ To be redescribed
@ Supervised by one of the faculty positions

	<u>Perm</u>	<u>Temp</u>
General Fund	25.00	1.00

STATE OF HAWAII
UNIVERSITY OF HAWAII
COMMUNITY COLLEGES
HONOLULU COMMUNITY COLLEGE
ACADEMIC AFFAIRS

Organization Chart

Chart III E

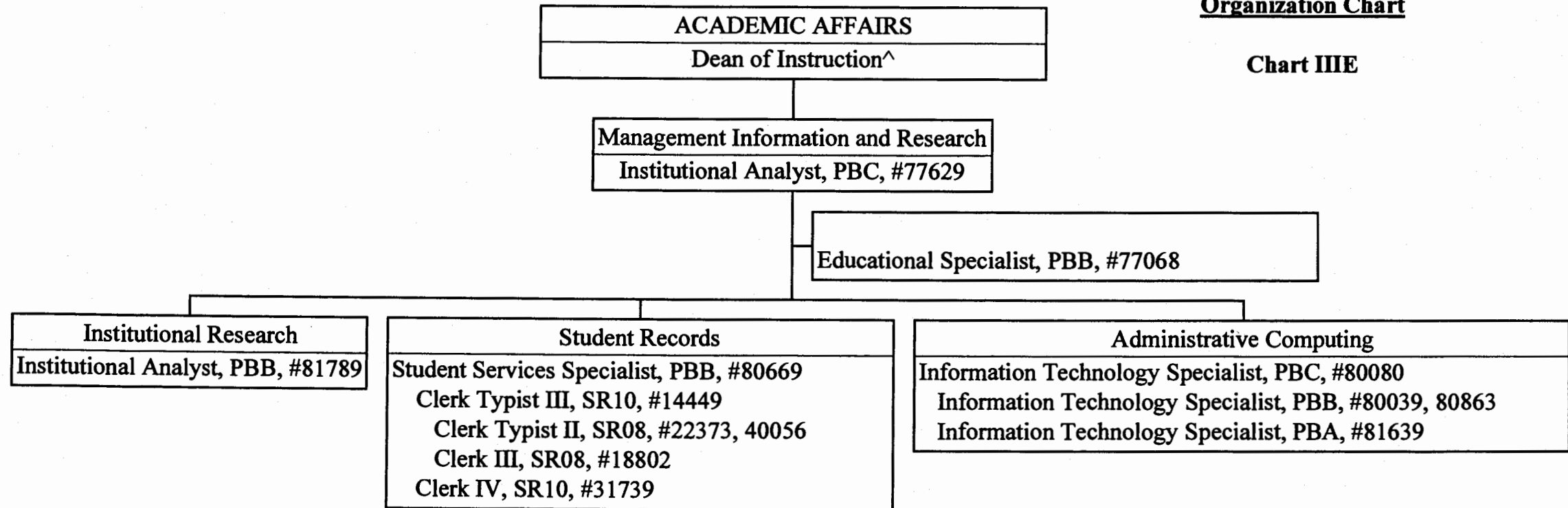


CHART UPDATED
JUL - 1 2009
DATE _____

[^] Excluded from position count this chart

General Fund Perm 13.00

STATE OF HAWAII
UNIVERSITY OF HAWAII
COMMUNITY COLLEGES
HONOLULU COMMUNITY COLLEGE
ACADEMIC AFFAIRS

Organization Chart

Chart IIIF

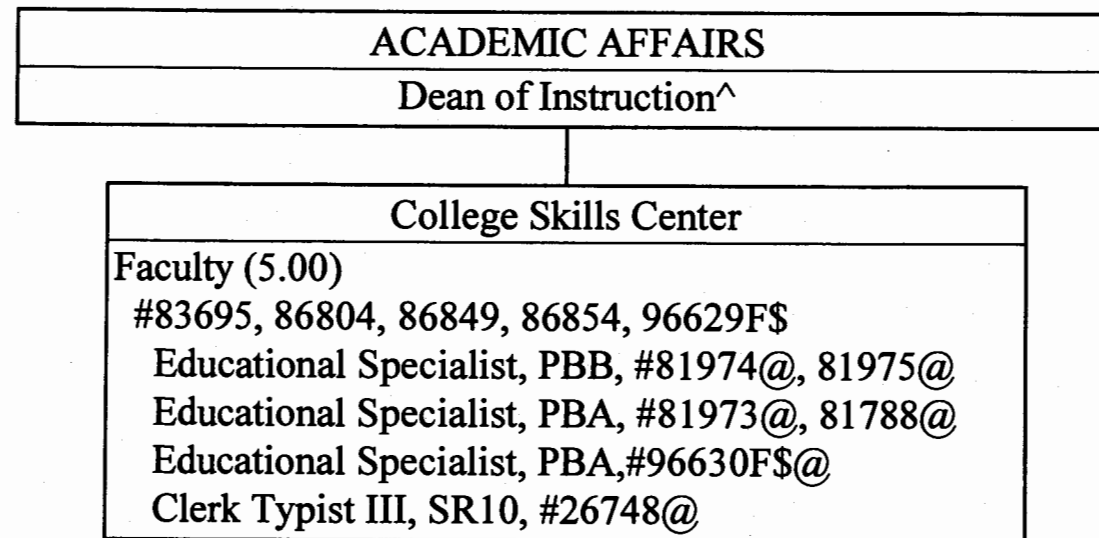


CHART UPDATED

DATE JUL - 1 2005

- ^ Excluded from position count this chart
- @ Supervised by one of the faculty positions
- \$ To be redescribed

General Fund Perm 11.00

**STATE OF HAWAII
UNIVERSITY OF HAWAII
COMMUNITY COLLEGES
HONOLULU COMMUNITY COLLEGE
ACADEMIC AFFAIRS**

Organization Chart

Chart IIIG

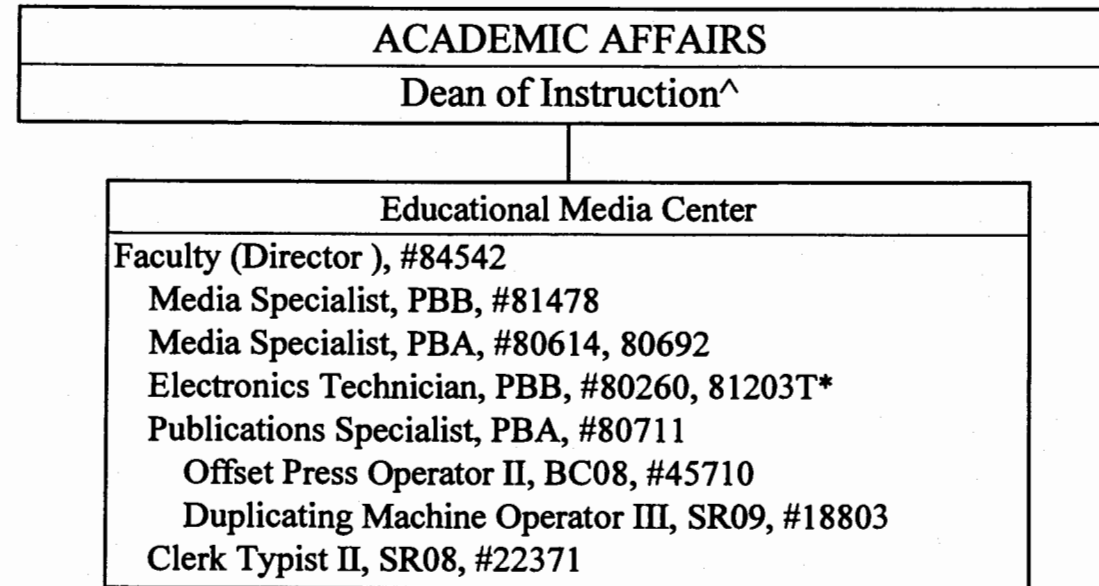


CHART UPDATED
DATE JUL - 1 2005

[^] Excluded from position count this chart

* Temporary Position

	<u>Perm</u>	<u>Temp</u>
General Fund	9.00	1.00

**STATE OF HAWAII
UNIVERSITY OF HAWAII
COMMUNITY COLLEGES
HONOLULU COMMUNITY COLLEGE
ACADEMIC AFFAIRS**

Organization Chart

Chart IIIH

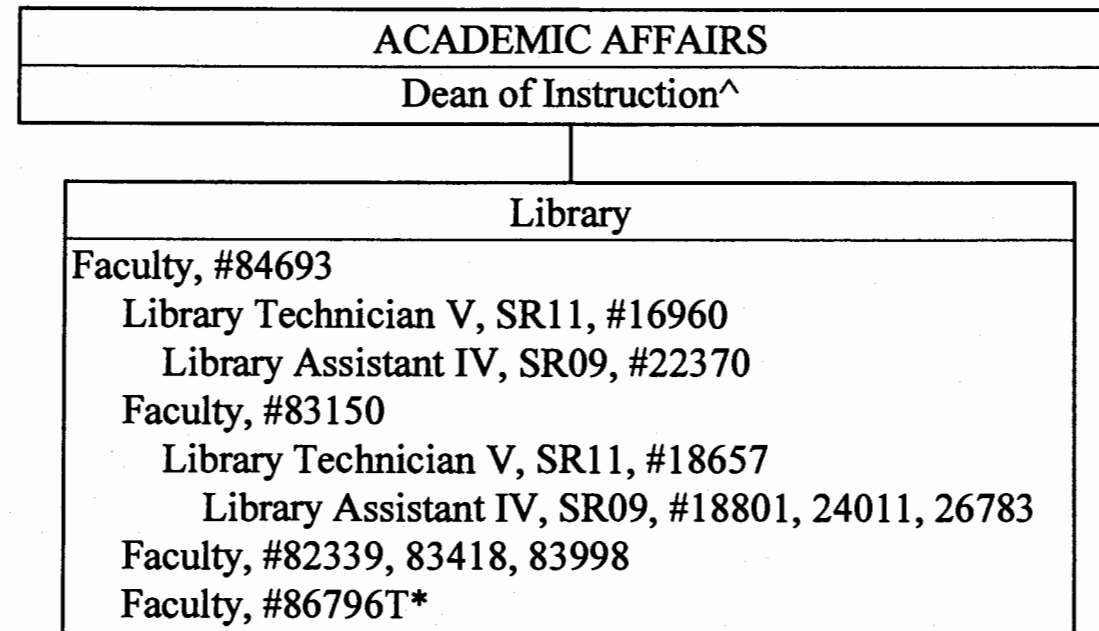


CHART UPDATED
DATE JUL - 1 2005

^ Excluded from position count this chart
* Temporary Position

	<u>Perm</u>	<u>Temp</u>
General Fund	11.00	1.00

STATE OF HAWAII
UNIVERSITY OF HAWAII
COMMUNITY COLLEGES
HONOLULU COMMUNITY
COLLEGE

PACIFIC CENTER FOR ADVANCED
TECHNOLOGY TRAINING

Organization Chart

Chart IV

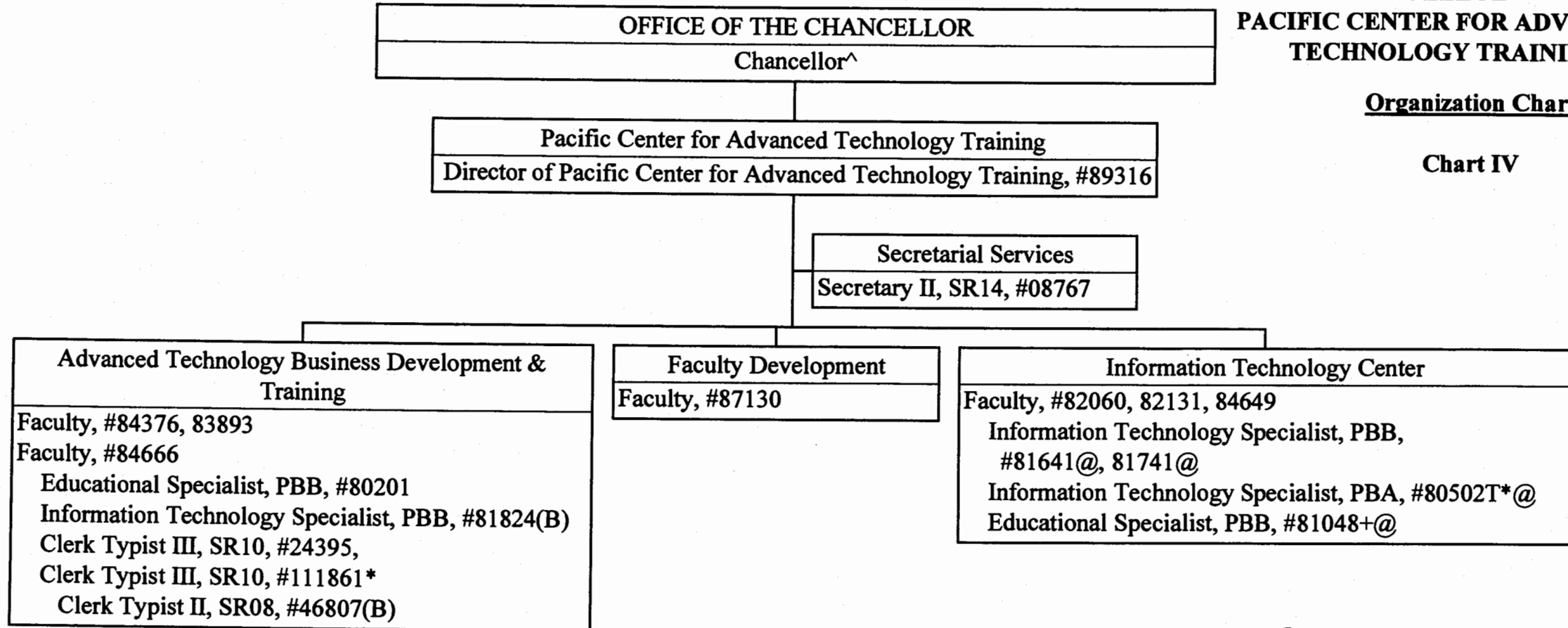


CHART UPDATED
DATE JUL - 1 2005

- ^ Excluded from position count this chart
- * Temporary Position
- + To be redescribed
- @ Supervised by one of the faculty positions

	<u>Perm</u>	<u>Temp</u>
General Fund	14.00	2.00
(B) Special Funds	2.00	

STATE OF HAWAII
UNIVERSITY OF HAWAII
COMMUNITY COLLEGES
HONOLULU COMMUNITY COLLEGE
PACIFIC AEROSPACE TRAINING CENTER

Organization Chart

Chart V

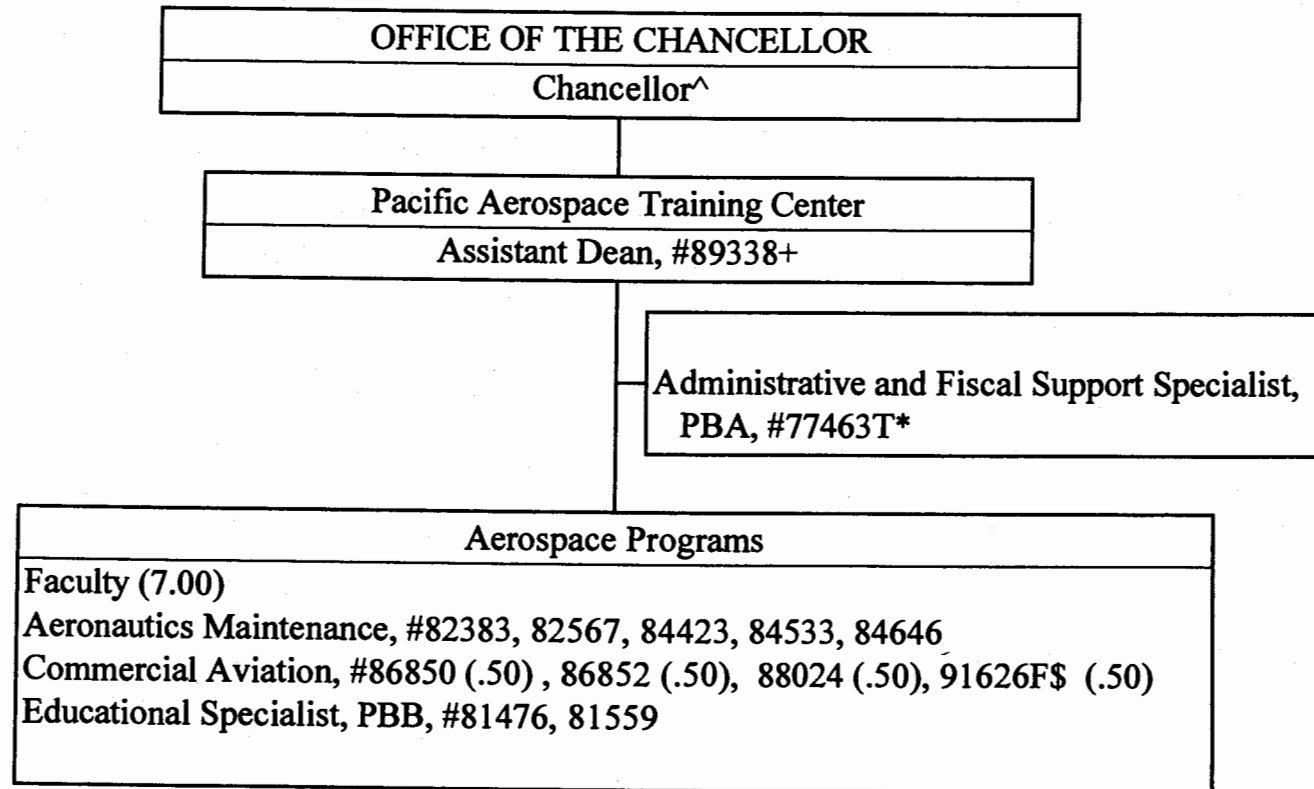


CHART UPDATED
JUL - 1 2005
DATE _____

^ Excluded from position count this chart

+ To be redescribed

\$ To be established

	<u>Perm</u>	<u>Temp</u>
General Fund	10.00	1.00

**STATE OF HAWAII
UNIVERSITY OF HAWAII
COMMUNITY COLLEGES
HONOLULU COMMUNITY COLLEGE
ADMINISTRATIVE SERVICES**

Organization Chart

Chart VI

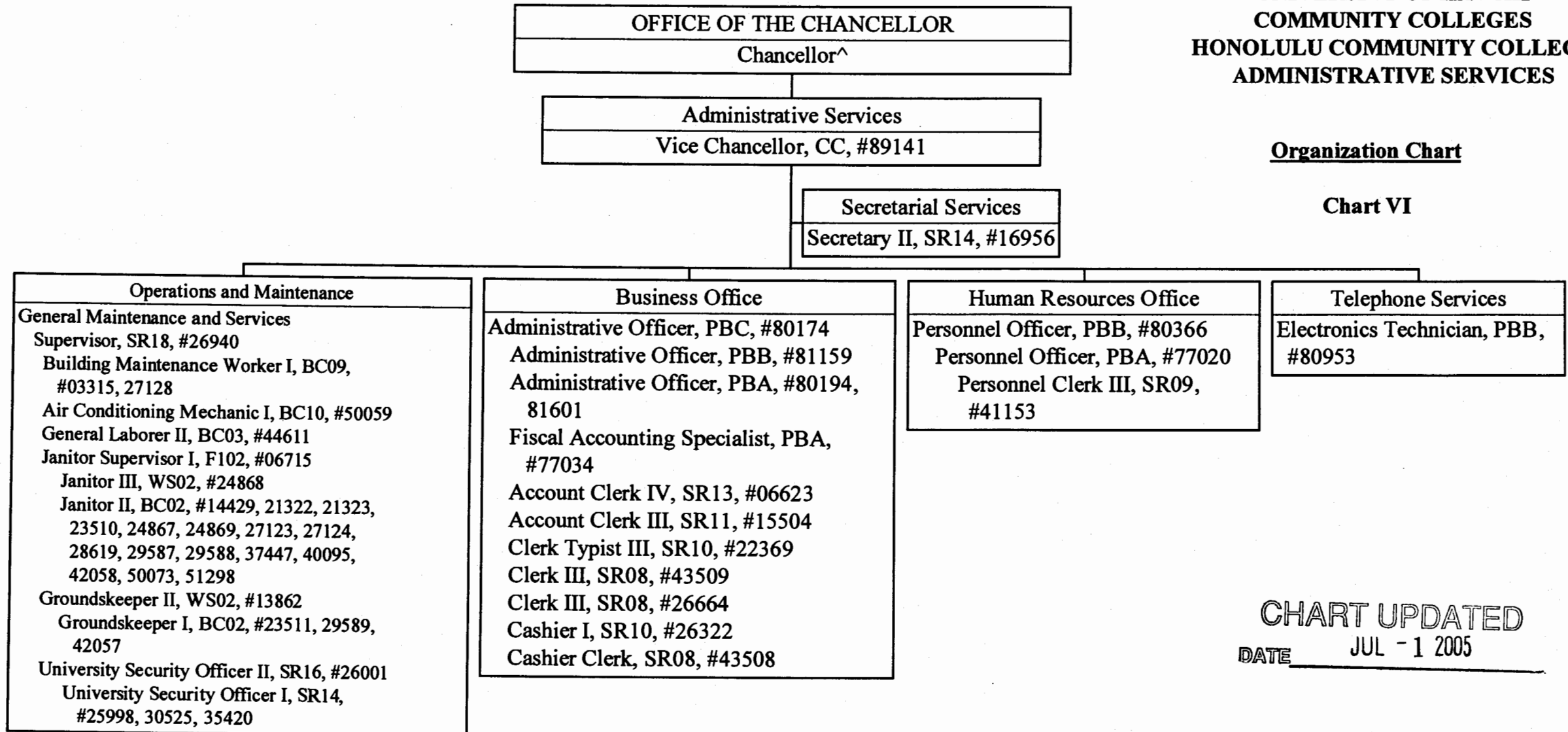


CHART UPDATED
 DATE JUL - 1 2005

^ Excluded from position count this chart

General Fund Perm
 49.00