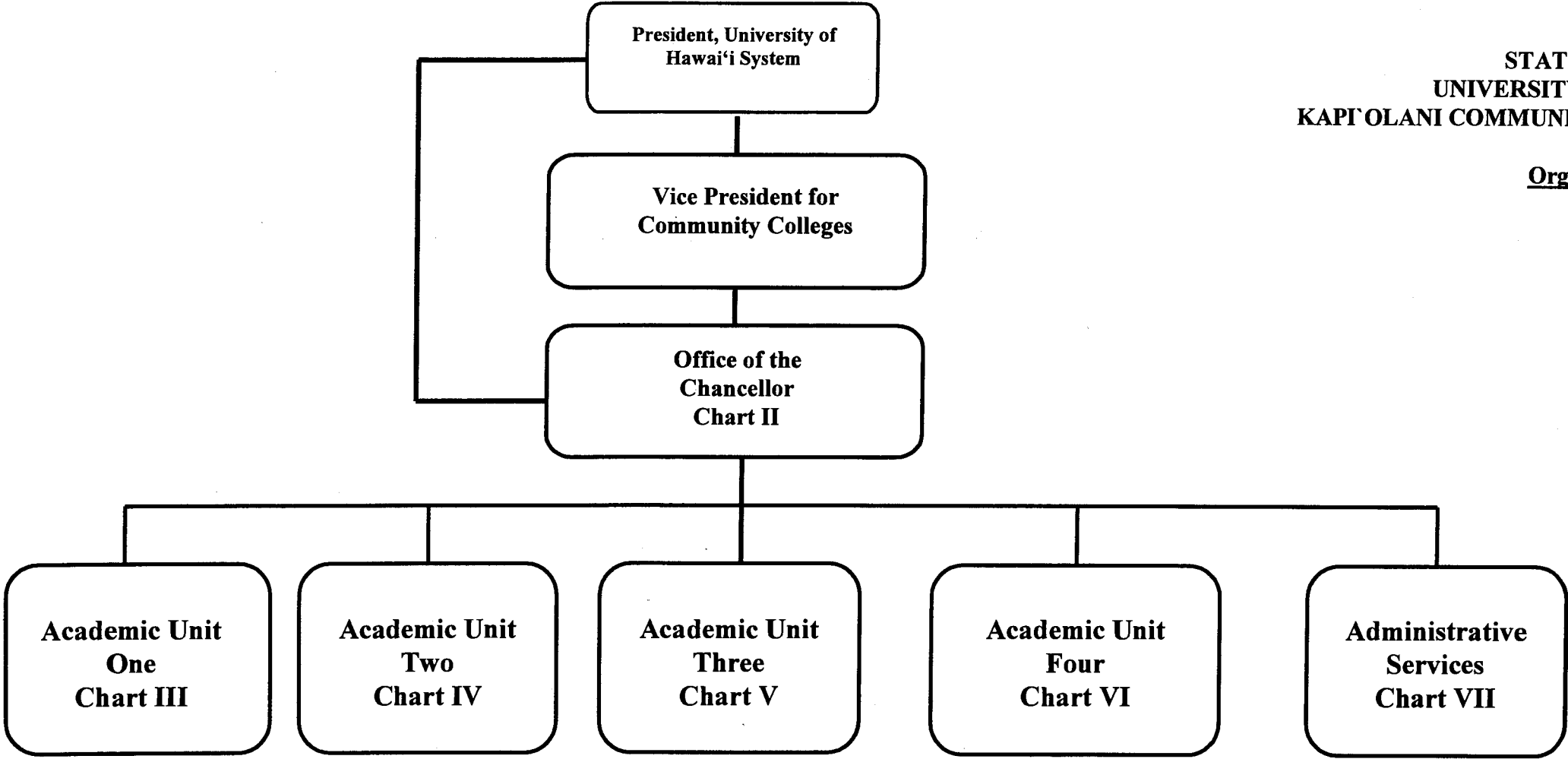


STATE OF HAWAII  
UNIVERSITY OF HAWAII  
KAPOLANI COMMUNITY COLLEGE

Organization Chart

Chart I



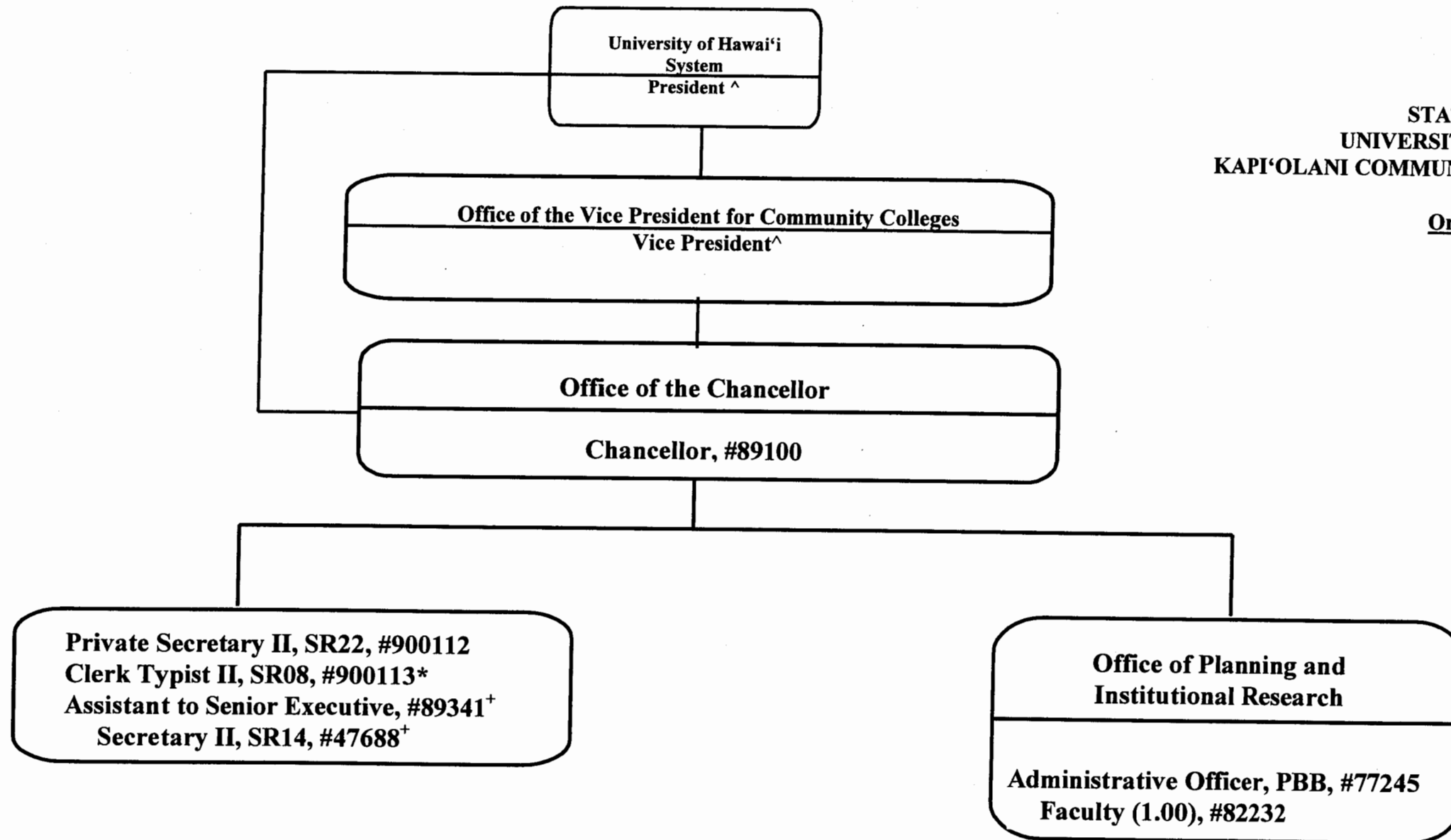
	<u>Perm</u>	<u>Temp</u>
General Fund	342.00	27.50
(B) Special Funds	24.00	

CHART UPDATED  
DATE JUL - 1 2005

STATE OF HAWAI'I  
UNIVERSITY OF HAWAI'I  
KAPI'OLANI COMMUNITY COLLEGE

Organization Chart

Chart II



^ Excluded from position count this chart

\*Temporary position

+Position to be redescrbed

General Fund

Perm  
6.00

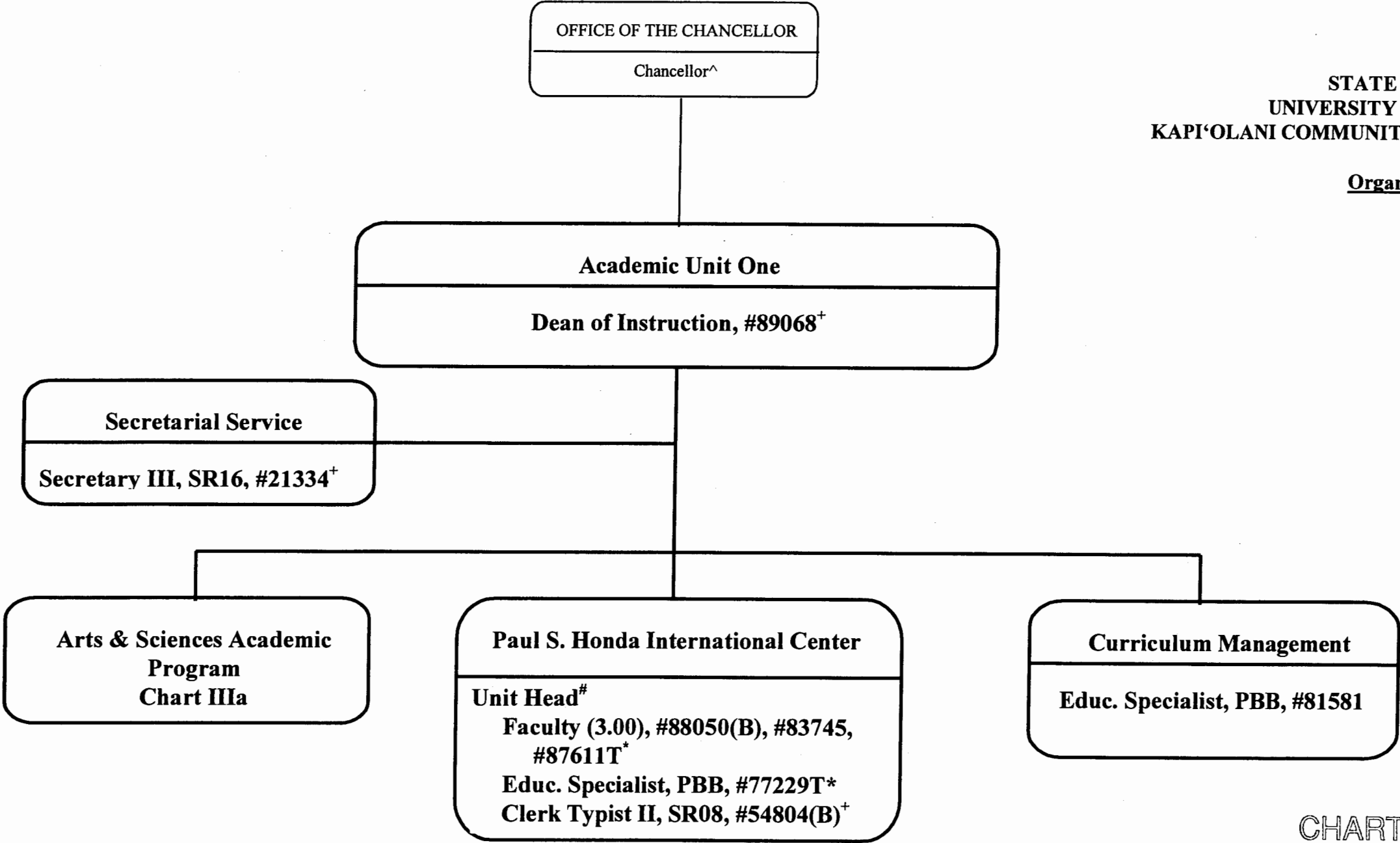
Temp  
1.00

CHART UPDATED  
DATE JUL - 1 2005

STATE OF HAWAI'I  
UNIVERSITY OF HAWAI'I  
KAPI'OLANI COMMUNITY COLLEGE

Organization Chart

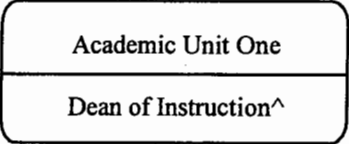
Chart III



^ Excluded from position count this chart  
# Unit Head is appointed from among the faculty positions  
\* Temporary Position  
+ To be redescribed & submitted for classification review

General Fund	<u>Perm</u>	<u>Temp</u>
(B) Special Funds	4.00	2.00
	2.00	

CHART UPDATED  
DATE JUL - 1 2005



STATE OF HAWAI'I  
UNIVERSITY OF HAWAI'I  
KAPI'OLANI COMMUNITY COLLEGE

Organization Chart

Chart IIIa

Arts & Sciences Academic Program	
Humanities	
Chairperson%	
Faculty (24.00)	
Full-time:	#82052, #82429, #82607, #82631, #82803, #82840, #82876, #82925, #82937, #82983, #83094, #83809, #83967, #84470, #84882, #84971, #84974, #86602, #86937, #87402, #87404, #86696T*, 87072T*, #87074T*
Information Technology Specialist, PBA,	#81068T*
Language Arts	
Chairperson%	
Faculty (34.00)	
Full-time:	#82135, #82178, #82231, #82447, #82555, #82653, #82776, #83123, #83308, #83447, #83521, #83559, #83783, #83795, #83810, #83903, #84327, #84409, #84623, #86594, #86595, #86596, #86604, #86798, #86803, #86809, #86945, #86960, #87084T*, #87102, #87120, #87143T*, #87583T*
Part-time:	#82540 (0.50 FTE), #86799 (0.50 FTE)
Mathematics/Science	
Chairperson%	
Faculty (27.00)	
Full-time:	#82031, #82394, #82492, #82910, #82981, #83096, #83262, #83357, #83688, #83733, #83939, #83974, #84458, #84836, #86592, #86593, #86600, #86606, #86718, #86754, #86827, #86830, #86845, #86959, #87401, #86947T*, #88032T*
Educational Specialist, PBA,	#81246
Social Sciences	
Chairperson%	
Faculty (11.00)	
Full-time:	#82152, #82706, #82935, #83492, #83560, #83642, #84972, #84973, #86599, #86938, #87403
Support Services Unit	
Unit Head#	
Faculty (5.50)	#82364, #83787, #86704, #82685, #82068, #86757 (0.50FTE)
Educational Specialist, PBB,	#80778 (B)
Secretary II, SR14,	#22313
Clerk Steno II, SR09,	#34661
Clerk-Typist II, SR08,	#22310, #26658, #47612 (0.50 FTE), #47900 (0.50 FTE), #84370 (.50 FTE)

^ Excluded from position count this chart  
% Chairperson is appointed from among the faculty positions  
# Unit Head is named from among the Chairpersons  
\* Temporary Position  
+ To be redescribed & submitted for classification review

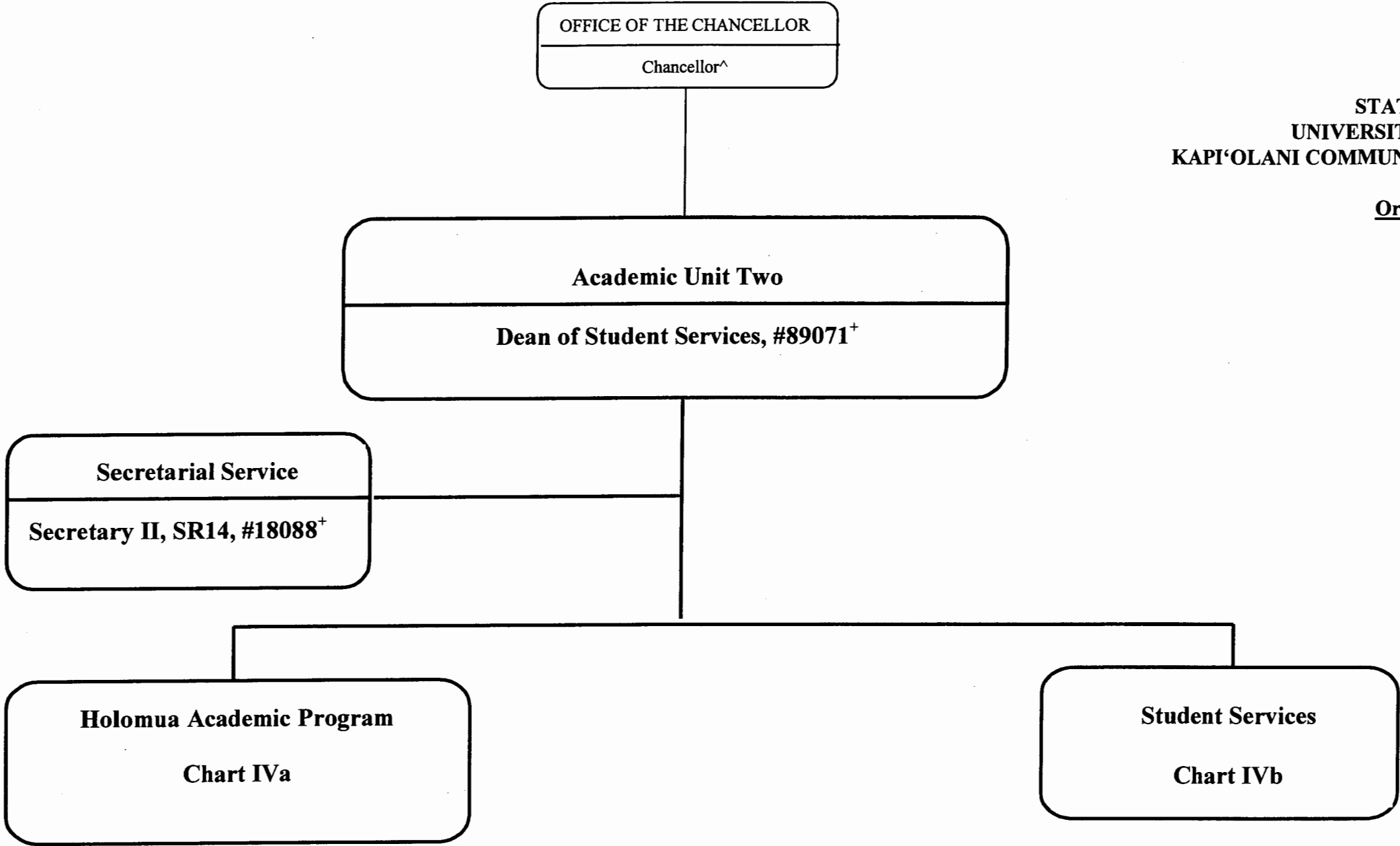
General Fund	Perm	Temp
(B) Special Funds	100.00	9.00
	1.00	

CHART UPDATED  
DATE JUL - 1 2005

STATE OF HAWAI'I  
UNIVERSITY OF HAWAI'I  
KAPI'OLANI COMMUNITY COLLEGE

Organization Chart

**Chart IV**



^ Excluded from position count this chart  
^To be redescribed & submitted for classification review

General Fund

Perm  
2.00

Temp

CHART UPDATED  
DATE JUL - 1 2005

STATE OF HAWAI'I  
UNIVERSITY OF HAWAI'I  
KAPI'OLANI COMMUNITY COLLEGE

Organization Chart

Chart IVa

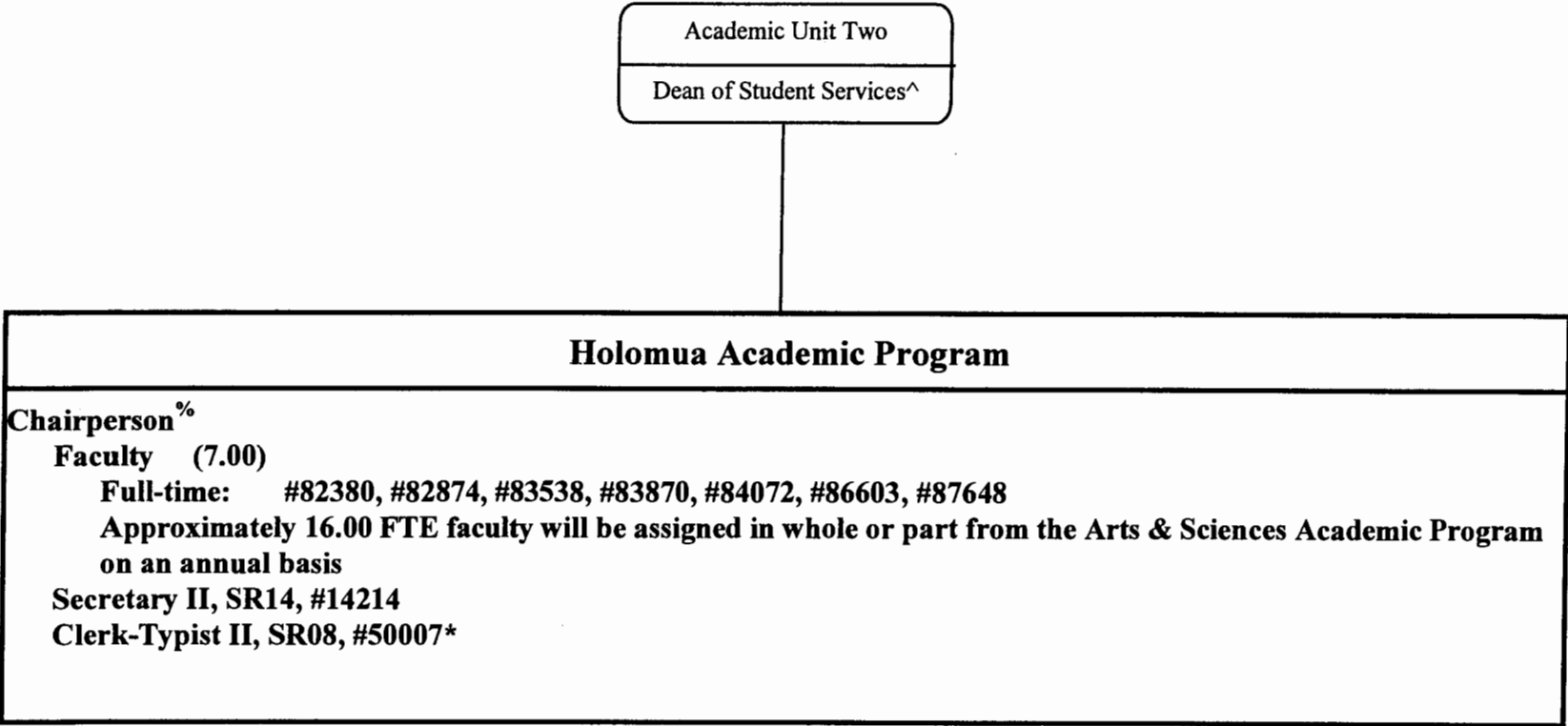


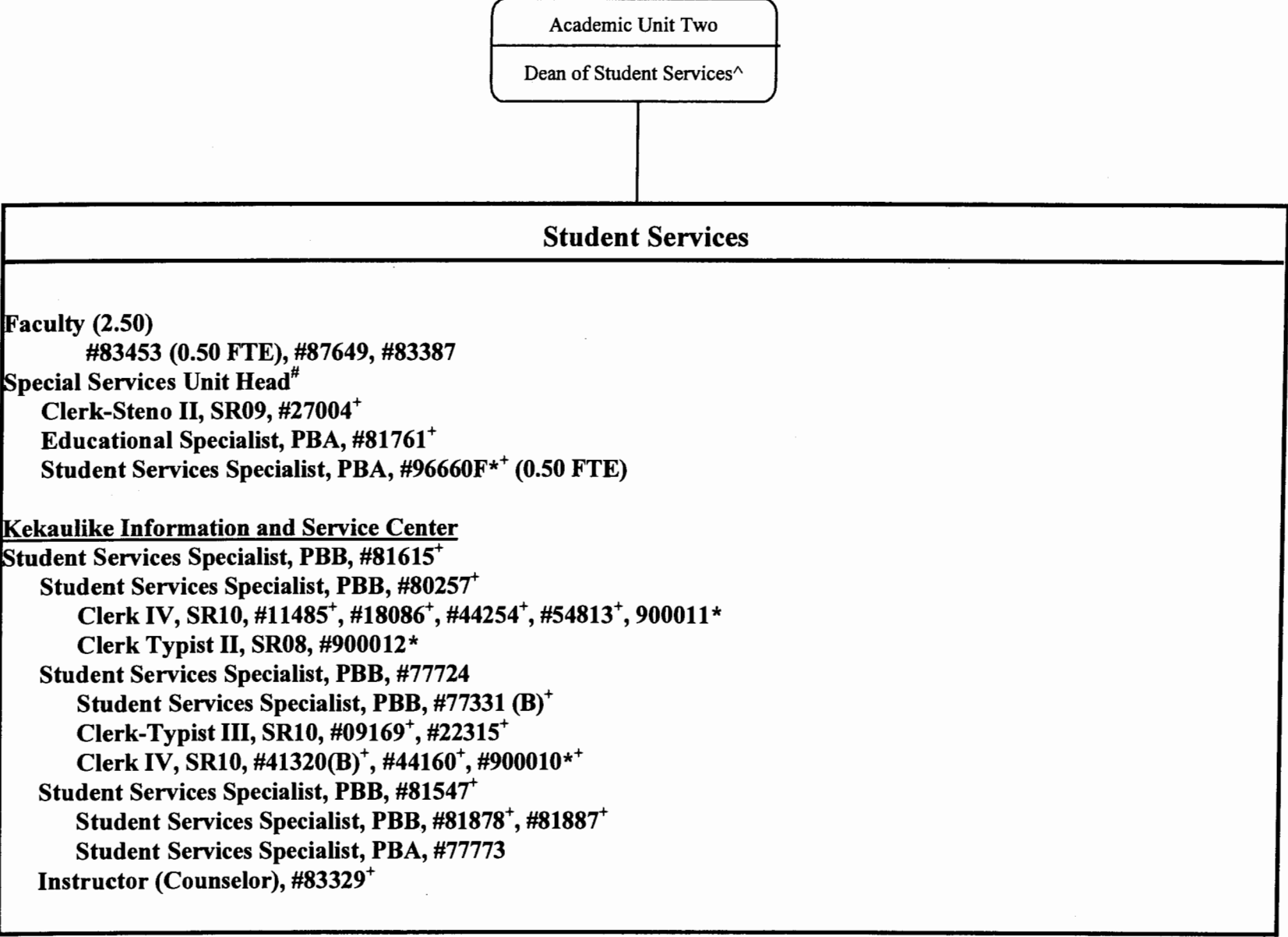
CHART UPDATED  
DATE JUL - 1 2005

^ Excluded from position count this chart  
\* Temporary Position  
% Chairperson is appointed from among the faculty positions

General Fund	<u>Perm</u>	<u>Temp</u>
	8.00	1.00

Organization Chart

Chart IVb



^ Excluded from position count this chart

\* Temporary Position

# Unit head is appointed from among the faculty positions

+ To be redescribed & submitted for classification review

	General Fund	Perm	Temp
(B) Special Fund		19.50	3.50
		2.00	

CHART UPDATED  
DATE JUL - 1 2005

STATE OF HAWAI'I  
UNIVERSITY OF HAWAI'I  
KAPI'OLANI COMMUNITY COLLEGE

Organization Chart

Chart V

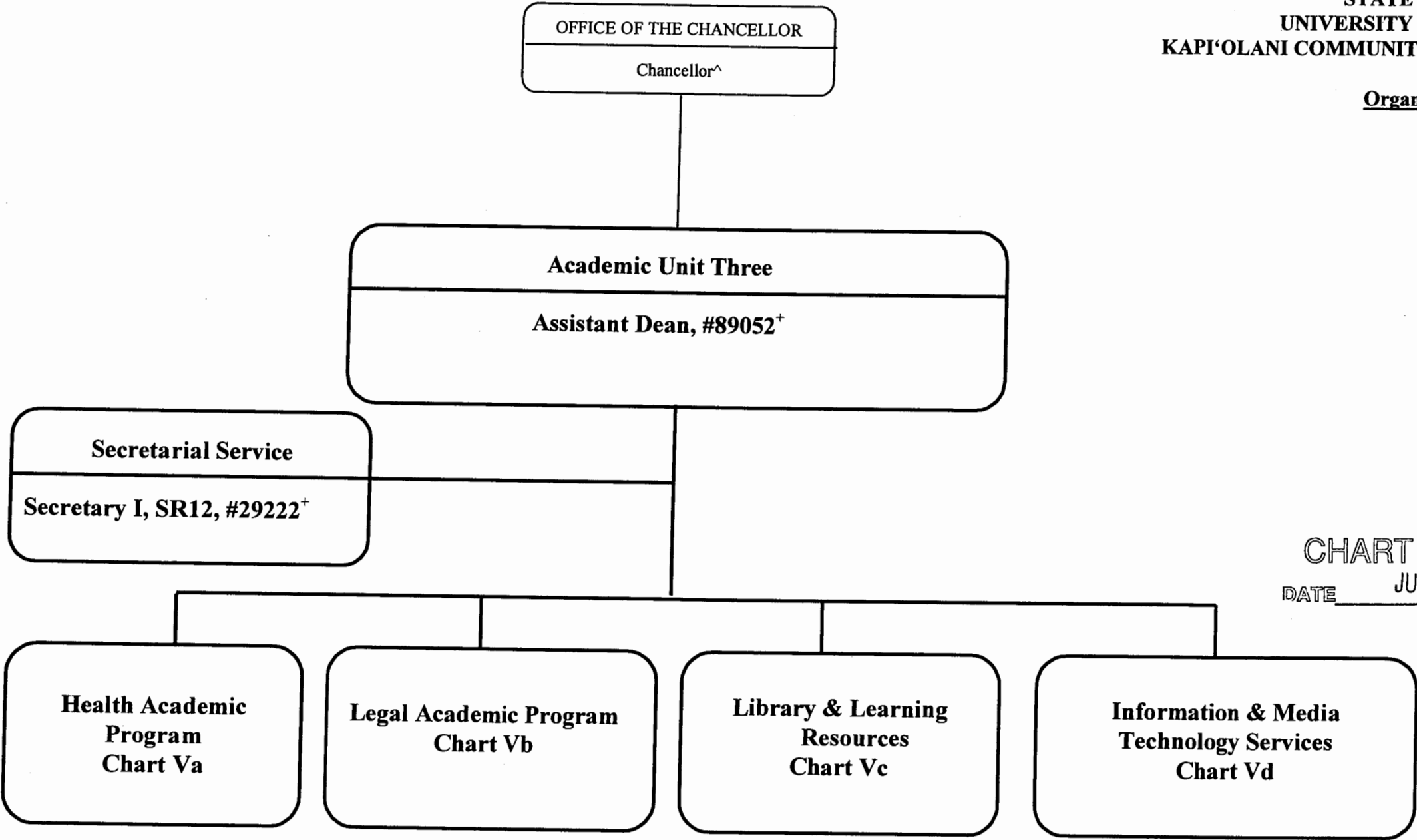
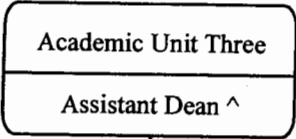


CHART UPDATED  
DATE JUL - 1 2005

^ Excluded from position count this chart  
+ To be redescribed & submitted for classification review

General Fund      Perm      Temp  
2.00

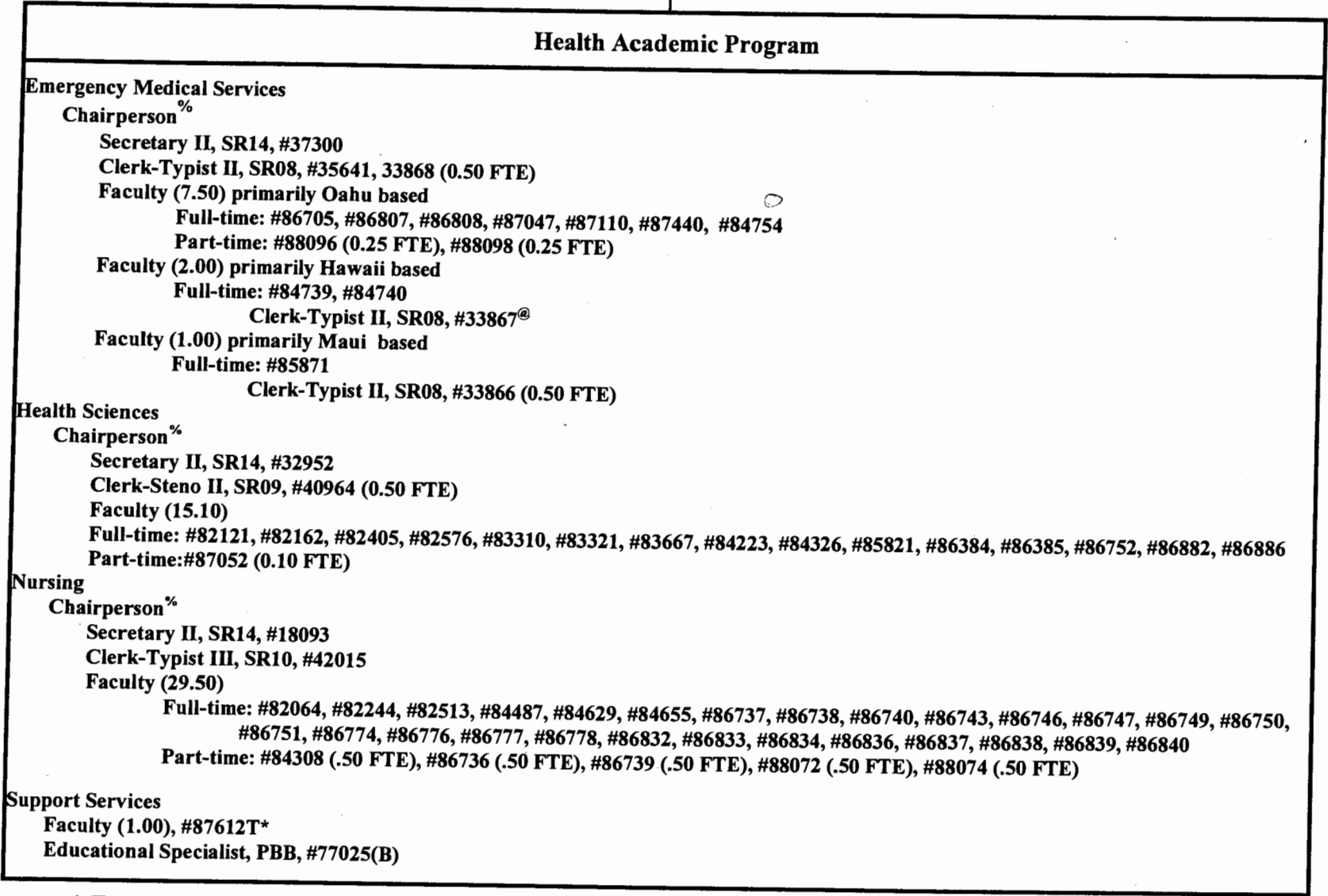




STATE OF HAWAI'I  
UNIVERSITY OF HAWAI'I  
KAPI'OLANI COMMUNITY COLLEGE

Organization Chart

Chart Va



^ Excluded from position count this chart  
\* Temporary Position  
% Chairperson is appointed from among the faculty positions  
@ Supervised by one of the faculty positions

	Perm	Temp
General Fund	62.60	1.00
(B) Special Funds	1.00	

CHART UPDATED  
DATE JUL - 1 2005

STATE OF HAWAI'I  
UNIVERSITY OF HAWAI'I  
KAPI'OLANI COMMUNITY COLLEGE

Organization Chart

Chart Vb

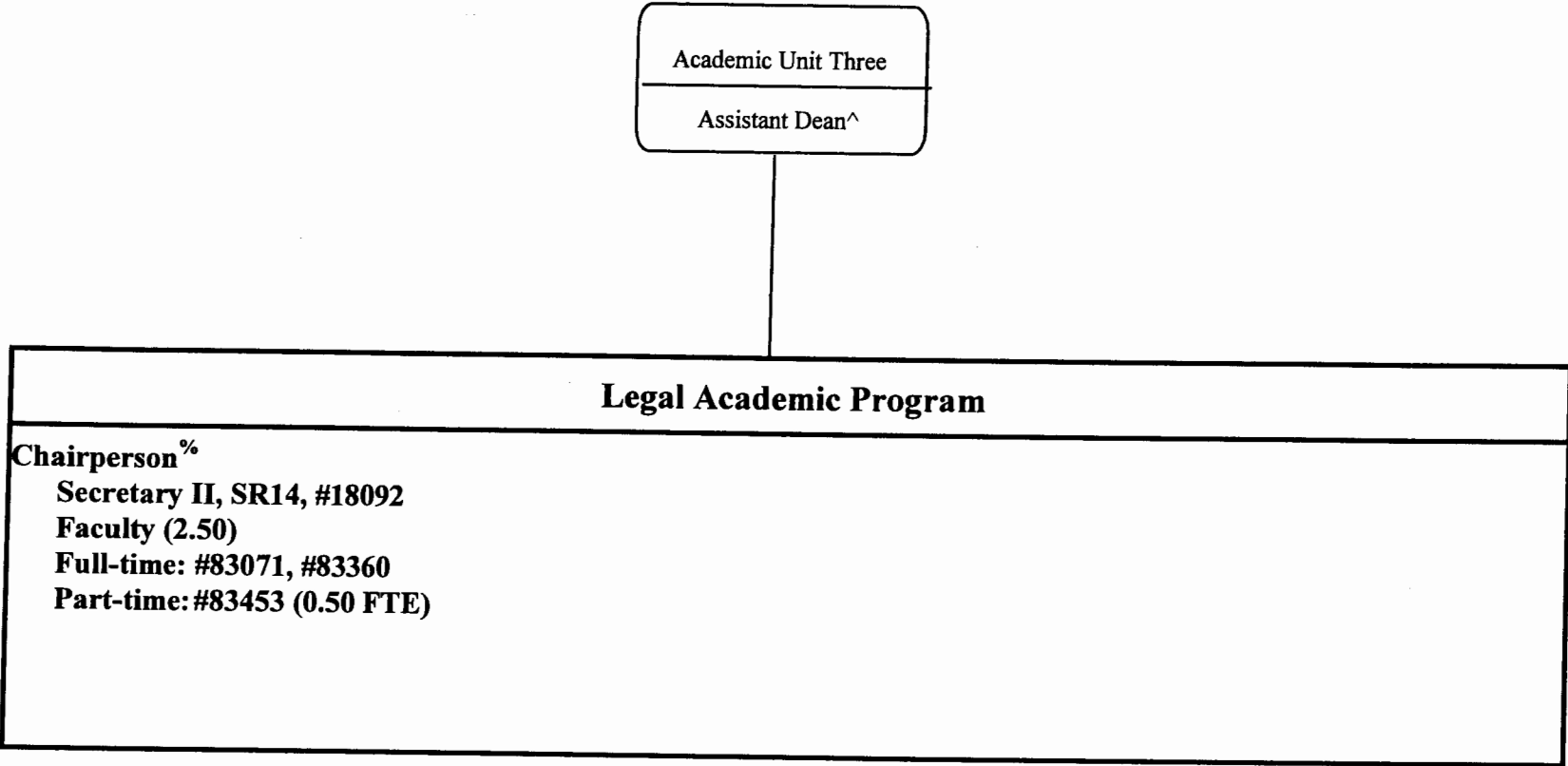
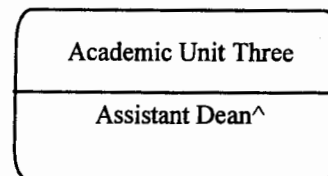


CHART UPDATED  
DATE JUL - 1 2005

^ Excluded from position count this chart  
% Chairperson is appointed from among the faculty positions

General Fund      Perm      Temp  
3.50



STATE OF HAWAI'I  
UNIVERSITY OF HAWAI'I  
KAPI'OLANI COMMUNITY COLLEGE

Organization Chart

Chart Vc

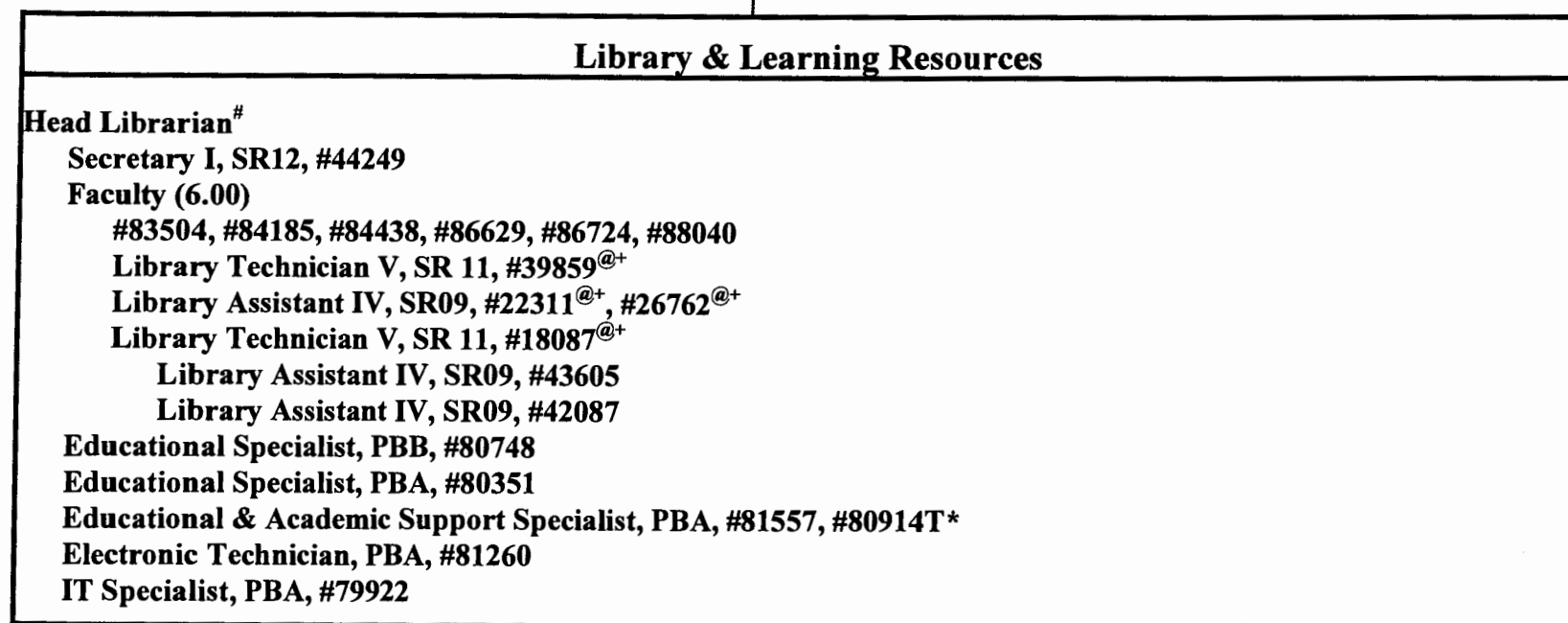


CHART UPDATED  
DATE JUL - 1 2005

^ Excluded from position count this chart

\* Temporary position

<sup>#</sup> Head Librarian is appointed from among the faculty positions

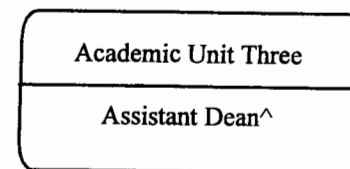
<sup>@</sup> Supervised by one of the faculty positions

<sup>+</sup> To be redescribed & submitted for classification review

General Fund

Perm  
18.00

Temp  
1.00



STATE OF HAWAI'I  
UNIVERSITY OF HAWAI'I  
KAPI'OLANI COMMUNITY COLLEGE

Organization Chart

Chart Vd

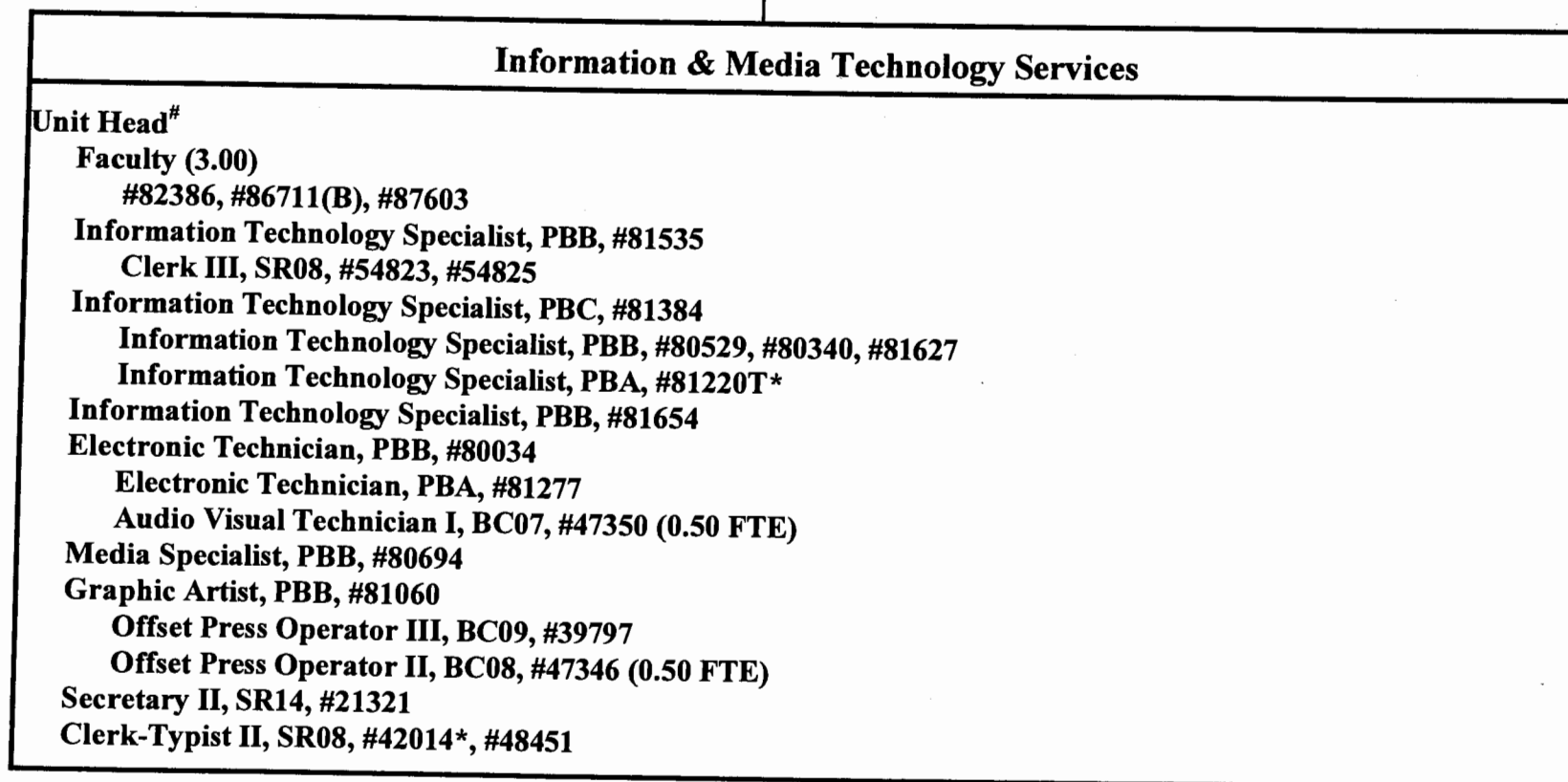


CHART UPDATED  
DATE JUL - 1 2005

^ Excluded from position count this chart

\* Temporary position

# Unit Head is appointed from among the faculty positions

General Fund  
Special Fund

Perm  
18.00  
1.00

Temp  
2.00

STATE OF HAWAI'I  
UNIVERSITY OF HAWAI'I  
KAPI'OLANI COMMUNITY COLLEGE

Organization Chart

Chart VI

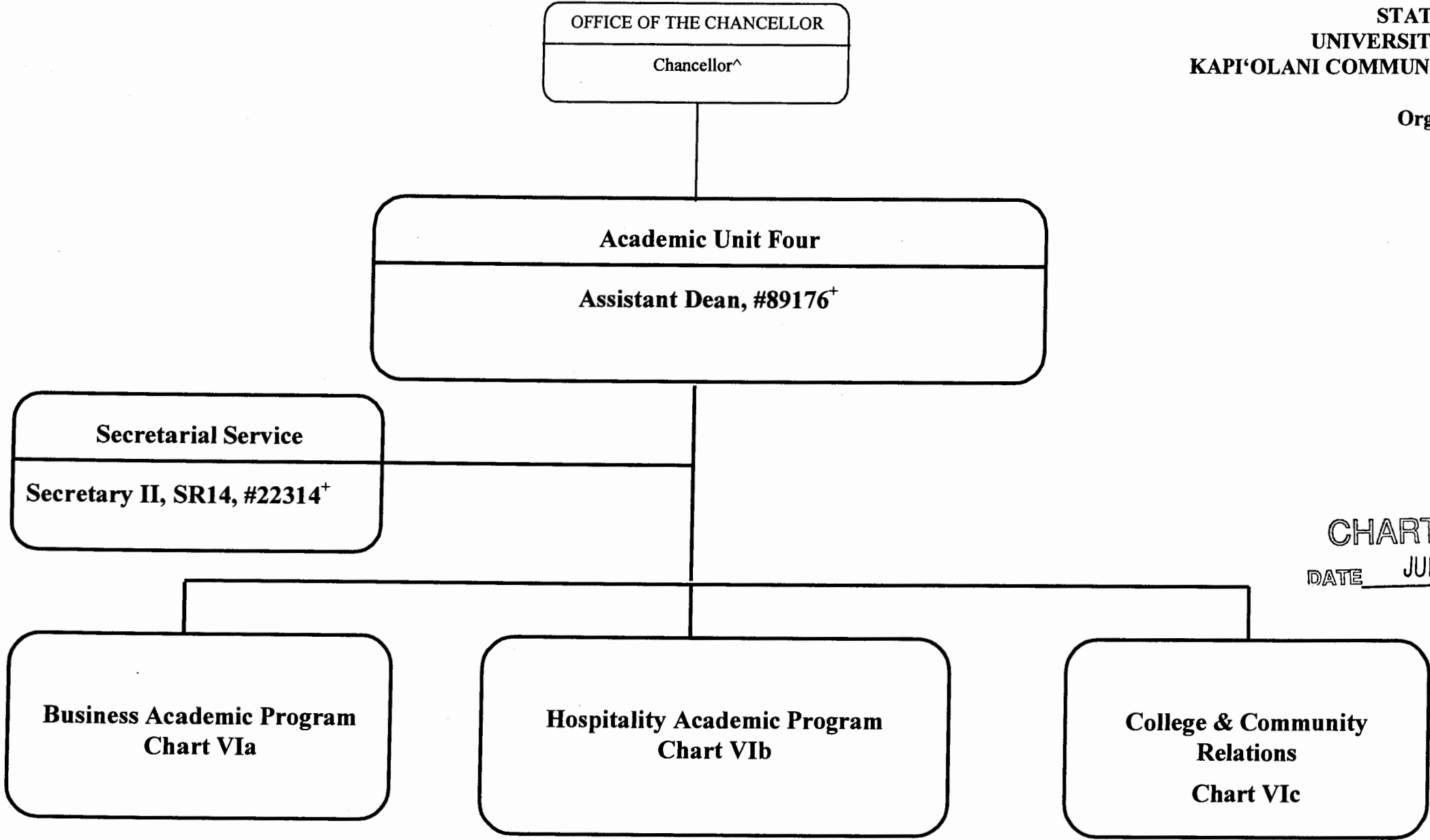


CHART UPDATED  
DATE JUL - 1 2005

^ Excluded from position count this chart

+ To be redescribed & submitted for classification review

General Fund

Perm  
2.00

Temp

STATE OF HAWAII  
UNIVERSITY OF HAWAII  
KAPI'OLANI COMMUNITY COLLEGE

Organization Chart

Chart Via

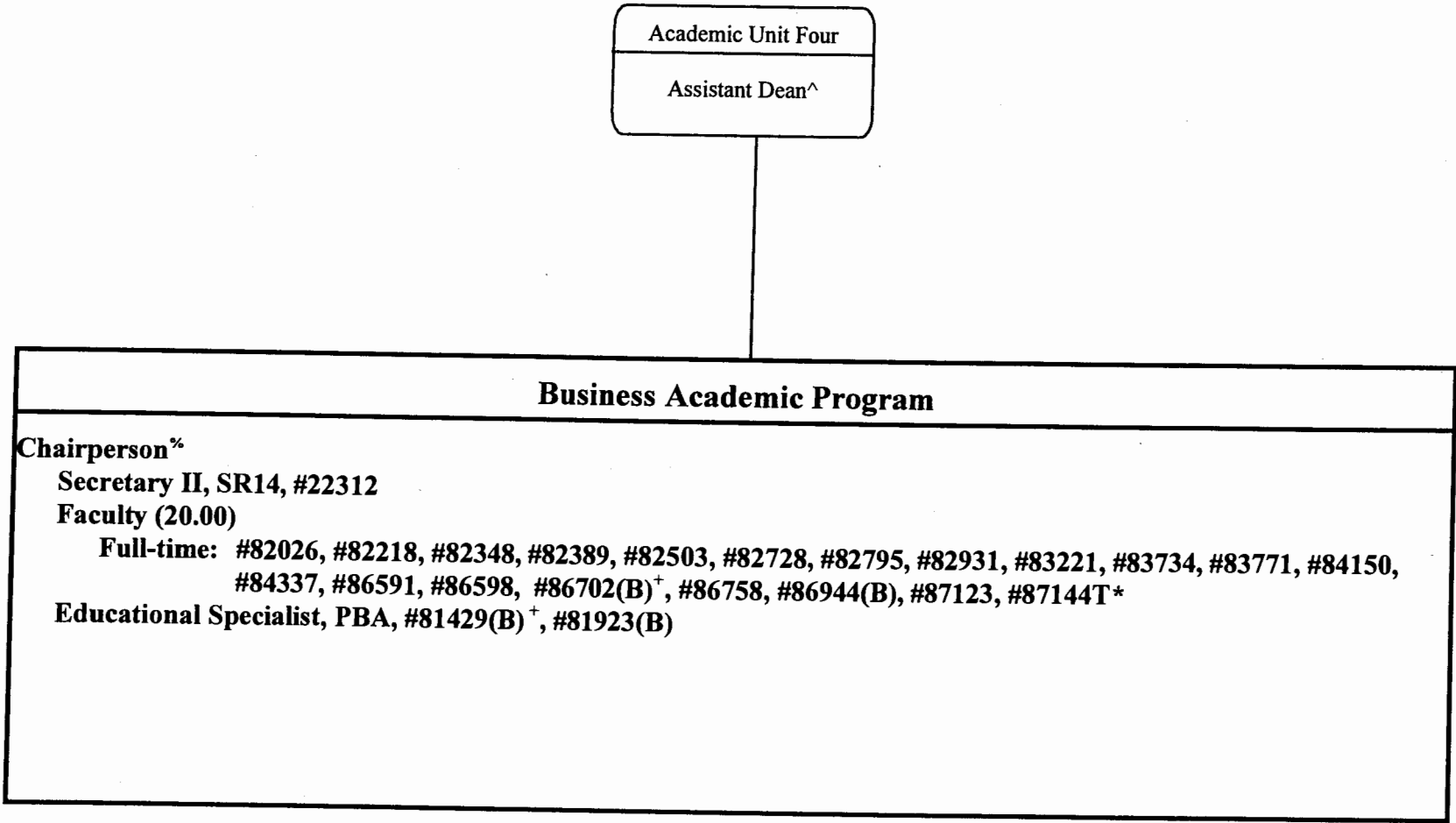


CHART UPDATED  
DATE JUL - 1 2005

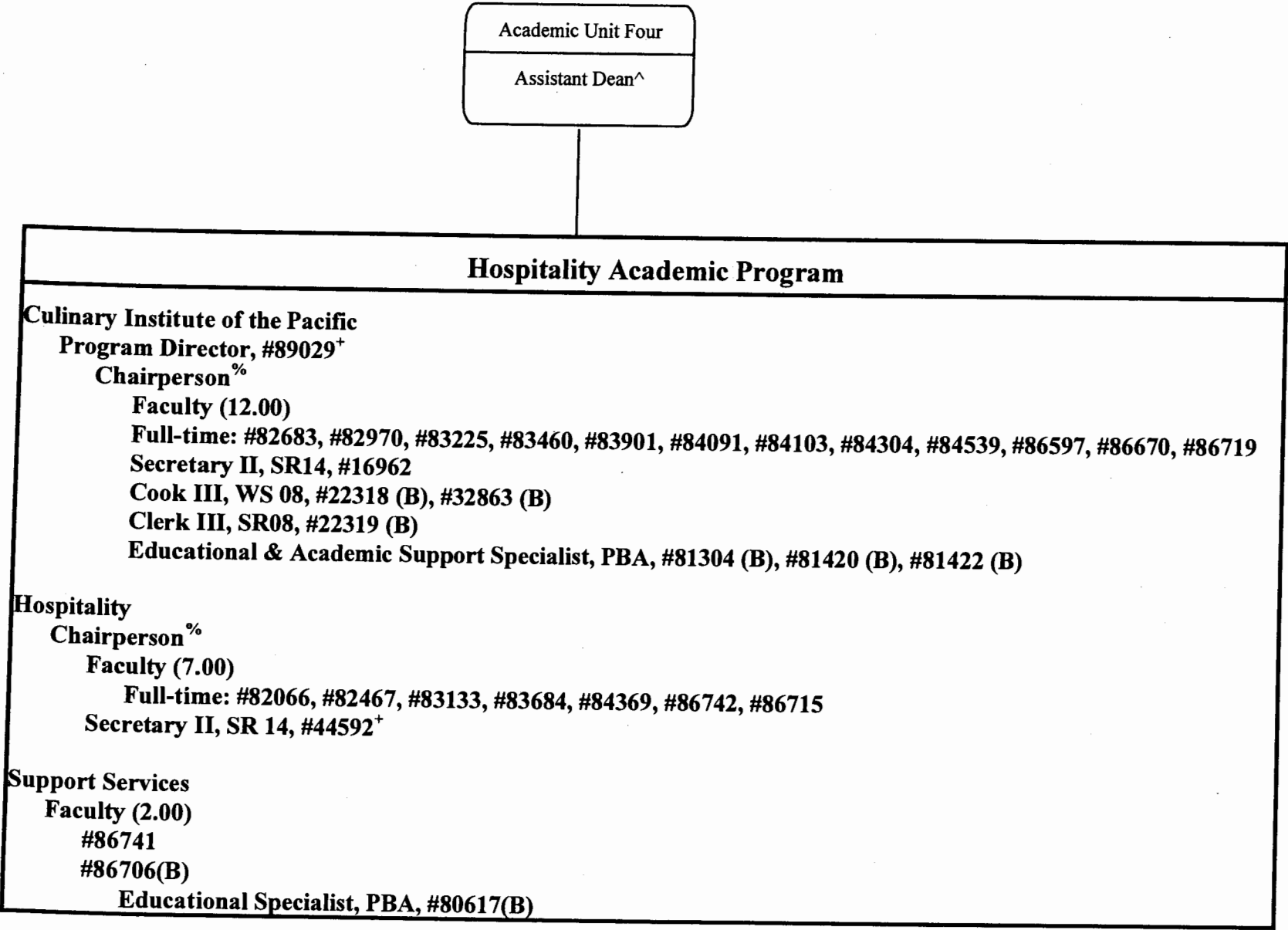
^ Excluded from position count this chart  
\* Temporary Position  
% Chairperson is appointed from among the faculty positions  
+ To be redescribed & submitted for classification review

General Fund	Perm	Temp
(B) Special Funds	18.00	1.00
	4.00	

STATE OF HAWAI'I  
UNIVERSITY OF HAWAI'I  
KAPI'OLANI COMMUNITY COLLEGE

Organization Chart

Chart VIb



^ Excluded from position count this chart

\* Temporary Position

% Chairperson is appointed from among the faculty positions

<sup>+</sup> To be redescribed & submitted for classification review

	General Fund	(B) Special Funds	Perm	Temp
			23.00	
			8.00	

CHART UPDATED  
DATE JUL - 1 2005

STATE OF HAWAI'I  
UNIVERSITY OF HAWAI'I  
KAPI'OLANI COMMUNITY COLLEGE

Organization Chart

Chart VIc

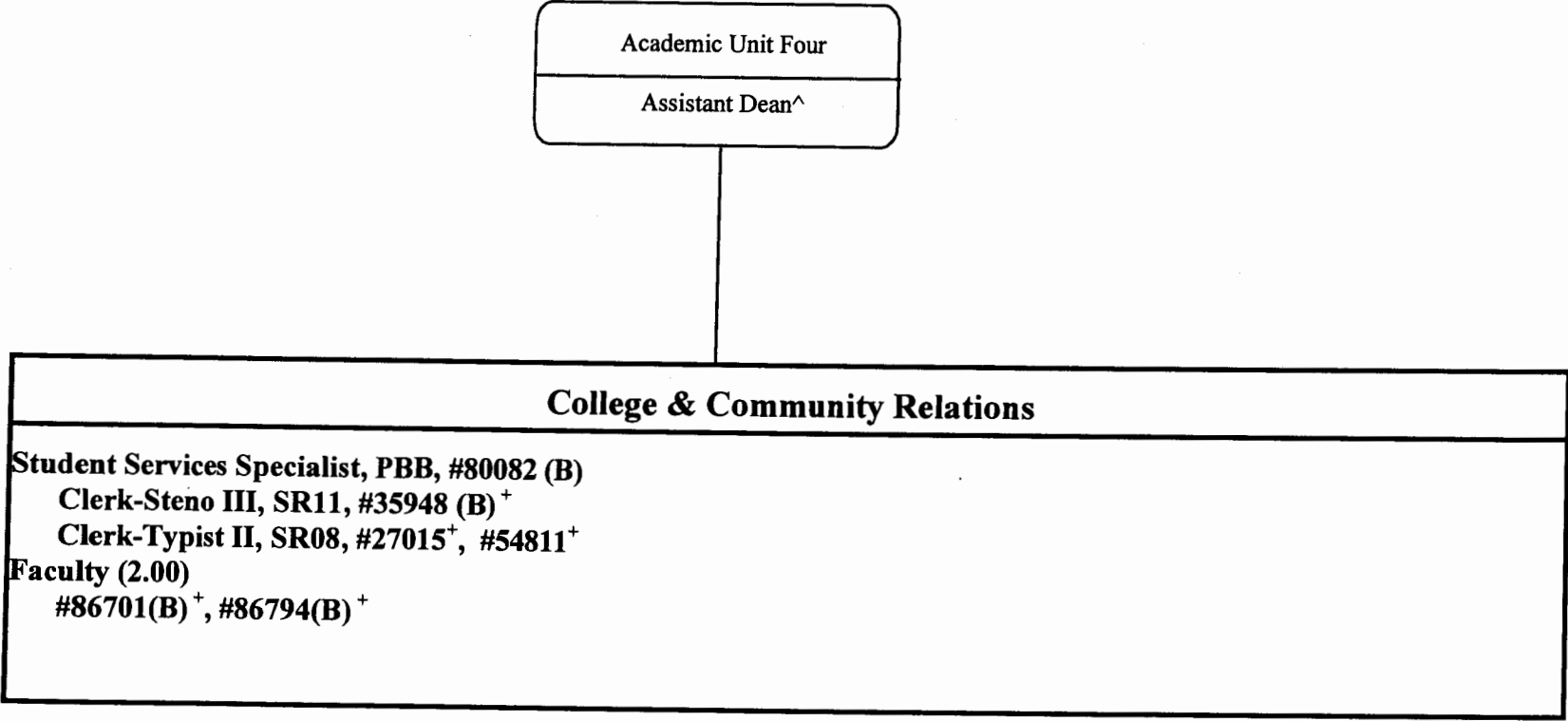


CHART UPDATED  
DATE JUL - 1 2005

^ Excluded from position count this chart  
\* Temporary Position  
+ To be redescribed & submitted for classification review

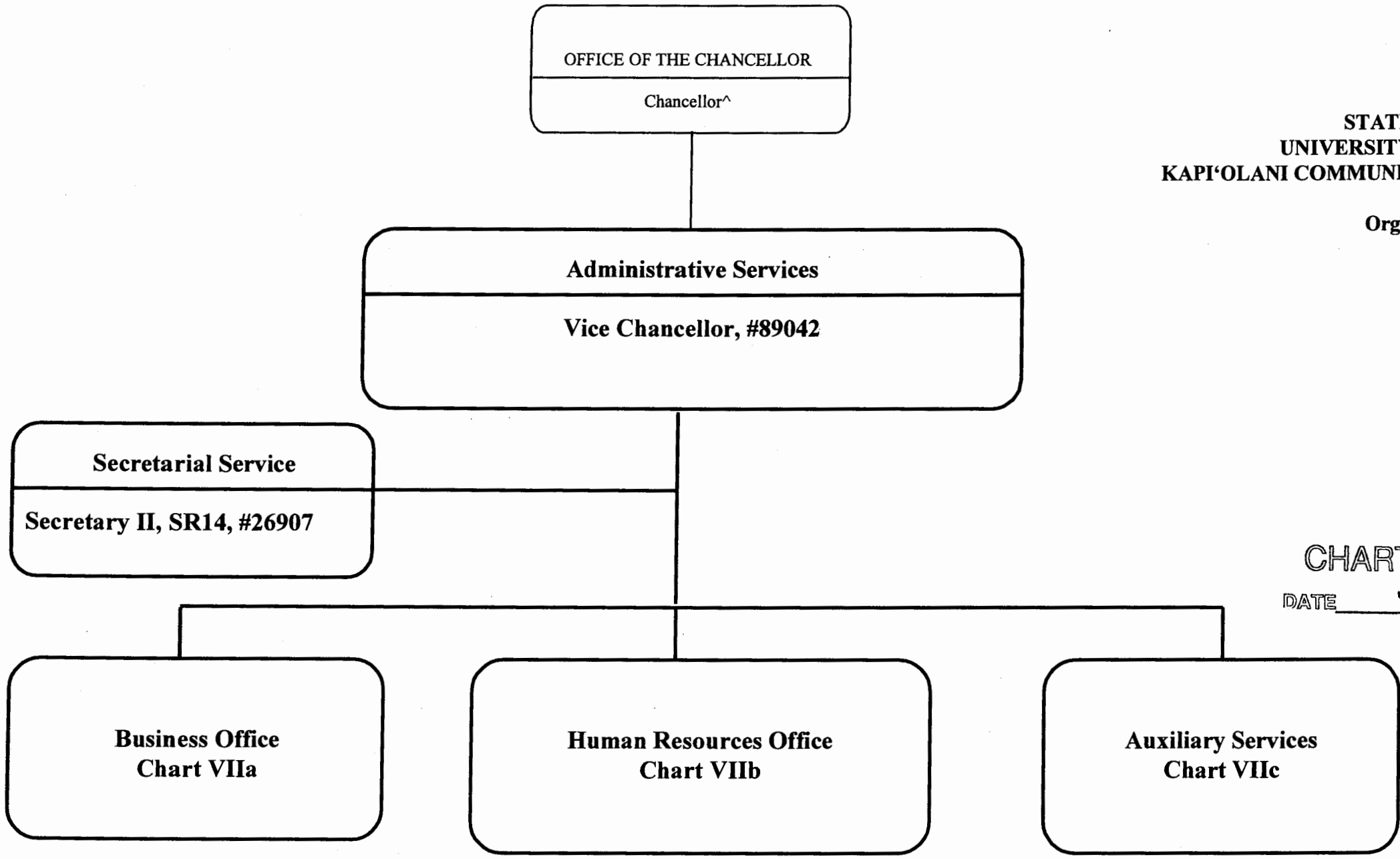
	<u>Perm</u>	<u>Temp</u>
General Fund	2.00	
(B) Special Funds	4.00	



STATE OF HAWAII  
UNIVERSITY OF HAWAII  
KAPI'OLANI COMMUNITY COLLEGE

Organization Chart  
Chart VII

CHART UPDATED  
DATE JUL - 1 2005



^ Excluded from position count this chart

General Fund

<u>Perm</u>	<u>Temp</u>
2.00	

STATE OF HAWAII  
UNIVERSITY OF HAWAII  
KAPI'OLANI COMMUNITY COLLEGE

Organization Chart

Chart VIIa

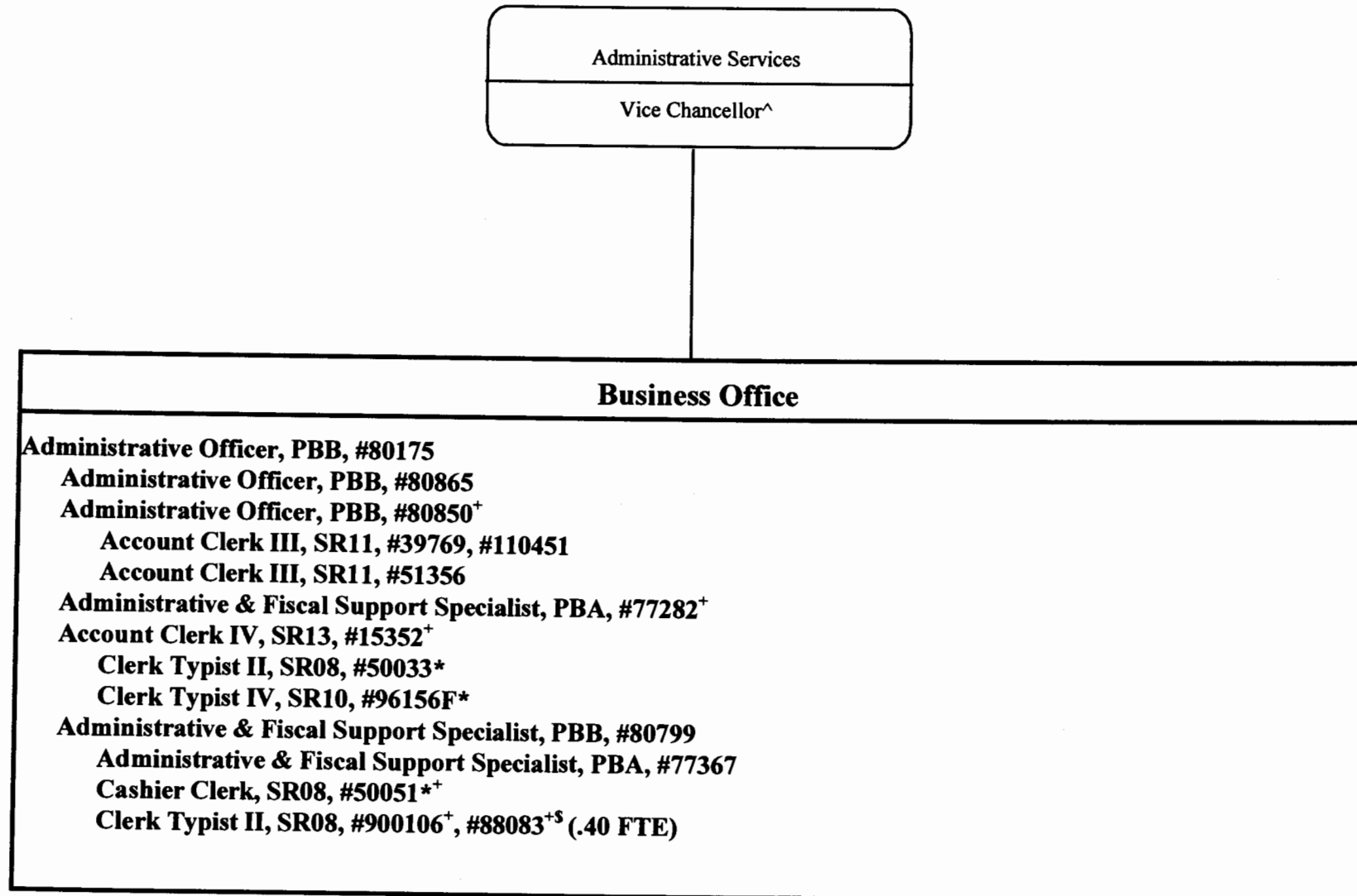


CHART UPDATED  
DATE JUL - 1 2005

^ Excluded from position count this chart

\* Temporary Position

+ To be redescribed & submitted for classification review

<sup>s</sup> Proposed position classification

General Fund

Perm  
11.40

Temp  
3.00

STATE OF HAWAII  
UNIVERSITY OF HAWAII  
KAPI'OLANI COMMUNITY COLLEGE

Organization Chart

Chart VIIb

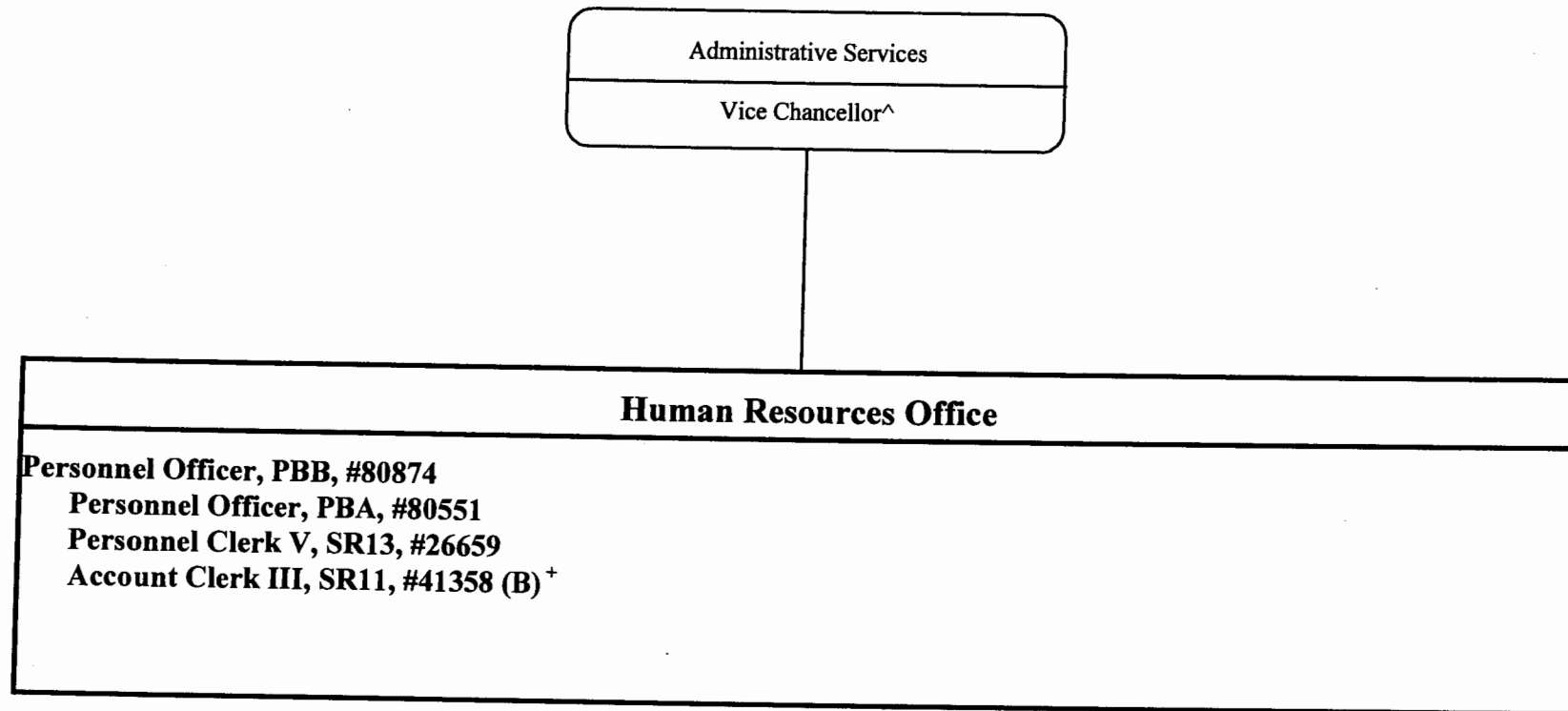


CHART UPDATED  
DATE JUL - 1 2005

^ Excluded from position count this chart

+To be redescribed & submitted for classification review

General Fund  
(B) Special Funds

Perm  
3.00  
1.00

Temp

STATE OF HAWAII  
UNIVERSITY OF HAWAII  
KAPI'OLANI COMMUNITY COLLEGE

Organization Chart

Chart VIIc

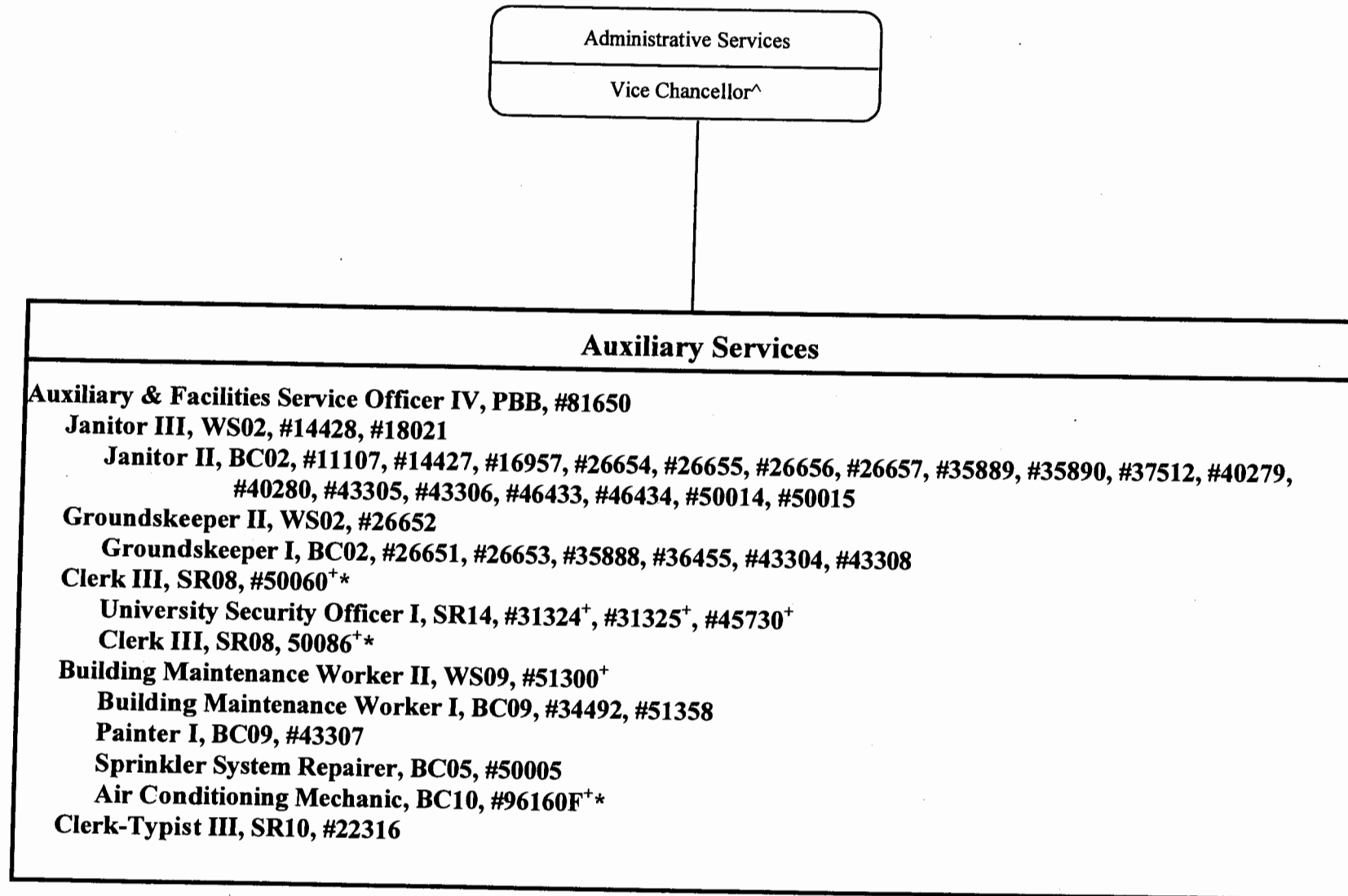


CHART UPDATED  
DATE JUL - 1 2005

^ Excluded from position count this chart

\* Temporary Position

+ To be redescribed & submitted for classification review

General Fund

Perm  
37.00

Temp  
3.00