

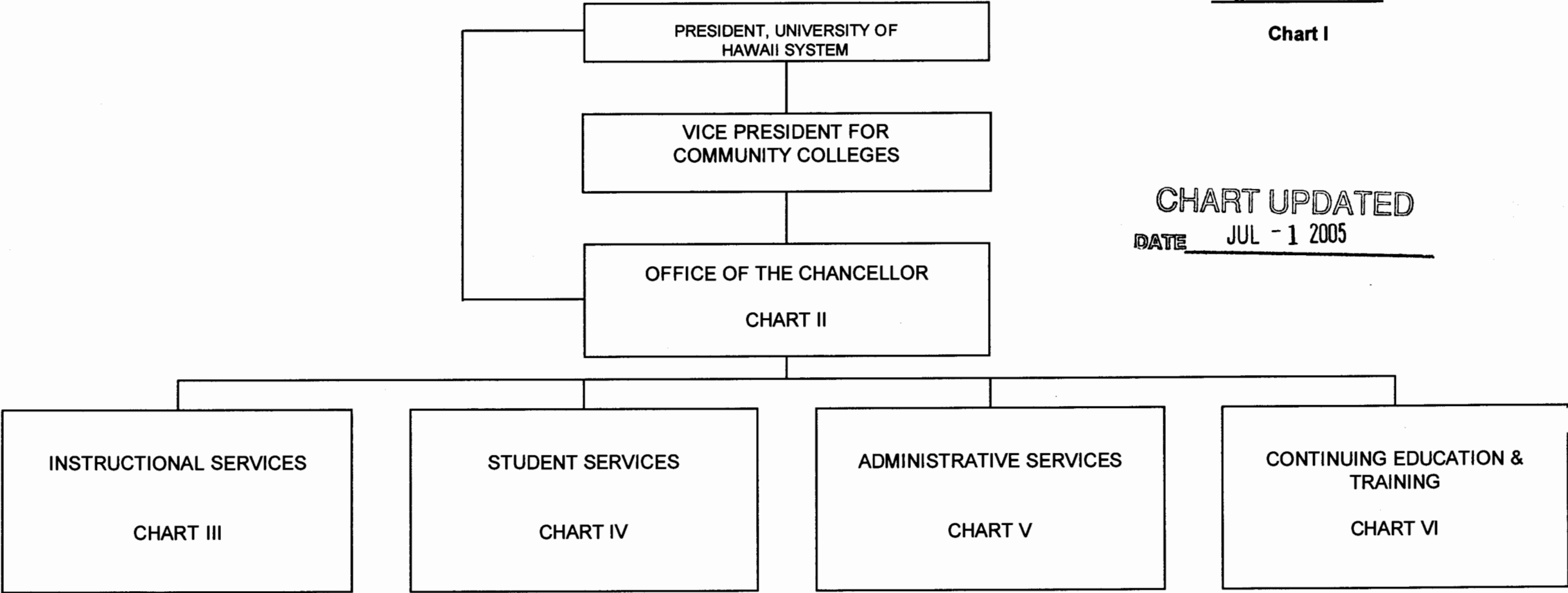
STATE OF HAWAII
UNIVERSITY OF HAWAII
KAUA'I COMMUNITY COLLEGE

Organization Chart

Chart I

CHART UPDATED

DATE JUL - 1 2005



	<u>Perm</u>
GENERAL FUND	146.50
(B) SPECIAL FUNDS	2.00

STATE OF HAWAI'I
UNIVERSITY OF HAWAI'I
KAUA'I COMMUNITY COLLEGE
OFFICE OF THE CHANCELLOR

Position Organization Chart

Chart II

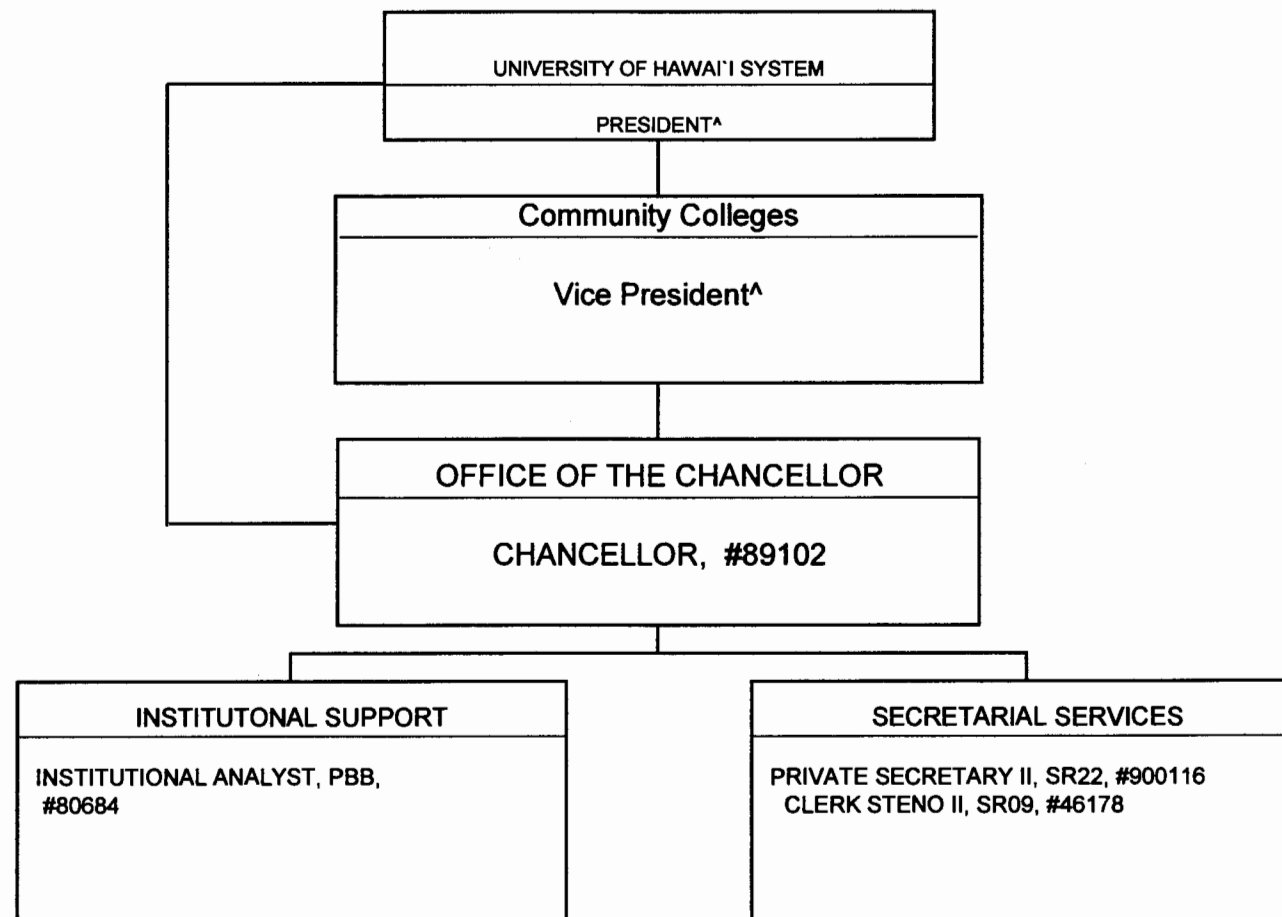


CHART UPDATED
JUL - 1 2005
DATE _____

^Excluded from position count this chart

GENERAL FUND Perm 4.00

STATE OF HAWAII
UNIVERSITY OF HAWAII
KAUA'I COMMUNITY COLLEGE
INSTRUCTIONAL SERVICES

Position Organization Chart
Chart III

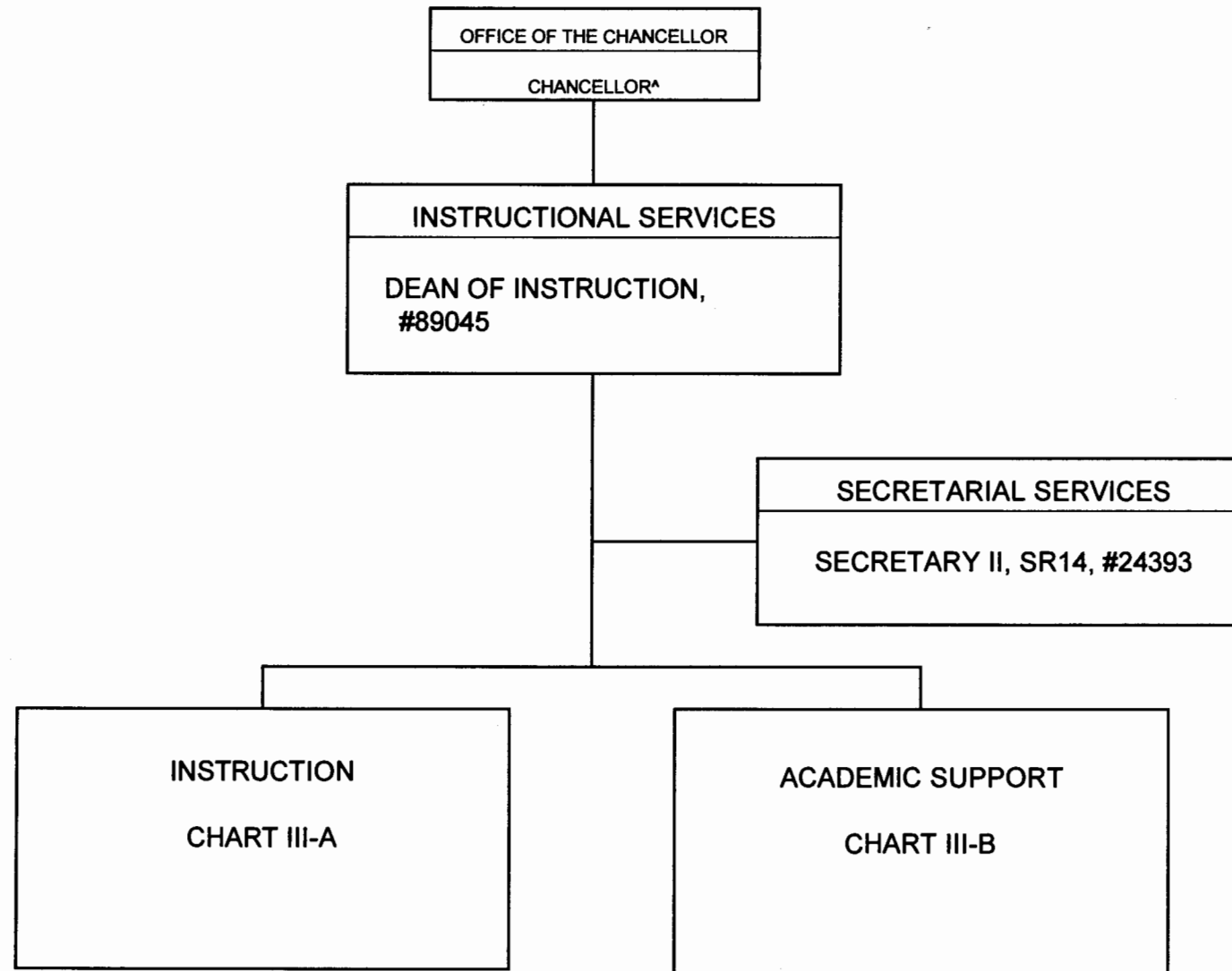


CHART UPDATED
DATE JUL - 1 2005

^Excluded from position count this chart

GENERAL FUND Perm 2.00

STATE OF HAWAII
UNIVERSITY OF HAWAII
KAUA'I COMMUNITY COLLEGE
INSTRUCTION

Position Organization Chart
Chart III-A

CHART UPDATED
DATE JUL -1 2005

INSTRUCTIONAL SERVICES
DEAN OF INSTRUCTION^

INSTRUCTIONAL SERVICES

STENO POOL
CLERK-STENO II, SR09,
#24785, 26901,26902,34970, 42211

LANGUAGE ARTS AND
HUMANITIES DIVISION

CHAIRPERSON**
FACULTY (14.00)
FOREIGN/ASIAN/
PACIFIC LANGUAGES
#87094, #88107
ART
#83324, 83640
ENGLISH
#82265, 83727, 84176,
84277, 85047
HISTORY
#82274
PHILOSOPHY
#82149
SPEECH
#82262
MUSIC
#86618
HAWAIIAN STUDIES
#86811

MATHEMATICS/SCIENCE/
SOCIAL SCIENCE DIVISION

CHAIRPERSON**
FACULTY (10.00)
MATH
#84443, 84652
CHEMISTRY
#83179
BIOLOGICAL SCIENCE
#82934
PHYSICAL SCIENCE
#83645
PSYCHOLOGY
#83567
ANTHROPOLOGY
#83208
SOCIOLOGY
#82416
POLITICAL SCIENCE
#85046
COMPUTER SCIENCE
#85048

TRADE AND
TECHNOLOGY DIVISION

CHAIRPERSON**
FACULTY (8.00)
AUTO TECHNOLOGY
#84392, 84612
AUTO BODY REPAIR
#84153
CARPENTRY
#83132
MACHINE SHOP
#85045
ELECTRONICS
#83175, 86617
FACILITIES ENGINEERING
#84657

HEALTH EDUCATION
DIVISION

CHAIRPERSON**
FACULTY (10.00)
NURSING
#82579, 83856, 84015, 84687,
86763, 86765, 86779, 86889,
96775F\$
HEALTH/P.E.
#86118
EARLY-CHILDHOOD
#86810
EARLY CHILDHOOD
SPECIALIST, PBA, #80623
EARLY CHILDHOOD
SPECIALIST, PBA, #80613

BUSINESS EDUCATION
DIVISION

CHAIRPERSON**
FACULTY (11.00)
ACCOUNTING
#82261, 84611
BUSINESS
#82376, 83732
SALES & MANAGEMENT
#85044
SECRETARIAL & RELATED
#82968, 83874
VISITOR INDUSTRY
#85043
FOOD SERVICES
#86579, 87014, 86901
EDUCATIONAL & ACADEMIC
SUPPORT SPECIALIST, PBA,
#81919, 97920F (B)
CAFETERIA HELPER, BC02
#48456 (B)

^ Excluded from position count this chart

**Appointed from instructional positions within divisions on a rotating basis

\$ Position to be established

Perm

GENERAL FUND 62.00
(B) SPECIAL FUNDS 2.00

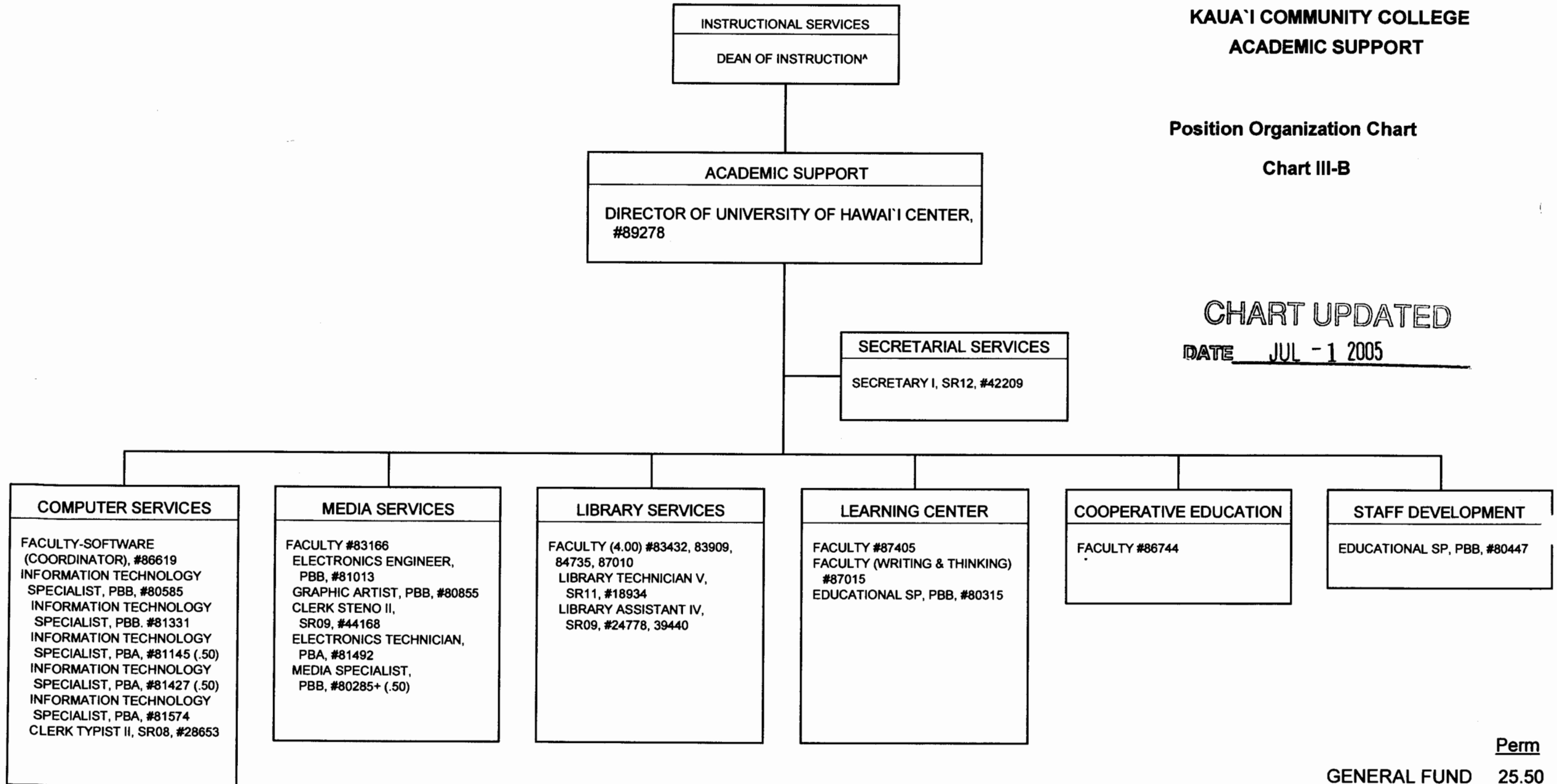
STATE OF HAWAII
UNIVERSITY OF HAWAII
KAUA'I COMMUNITY COLLEGE
ACADEMIC SUPPORT

Position Organization Chart

Chart III-B

CHART UPDATED

DATE JUL -1 2005



^Excluded from position count this chart
+to be redescribed

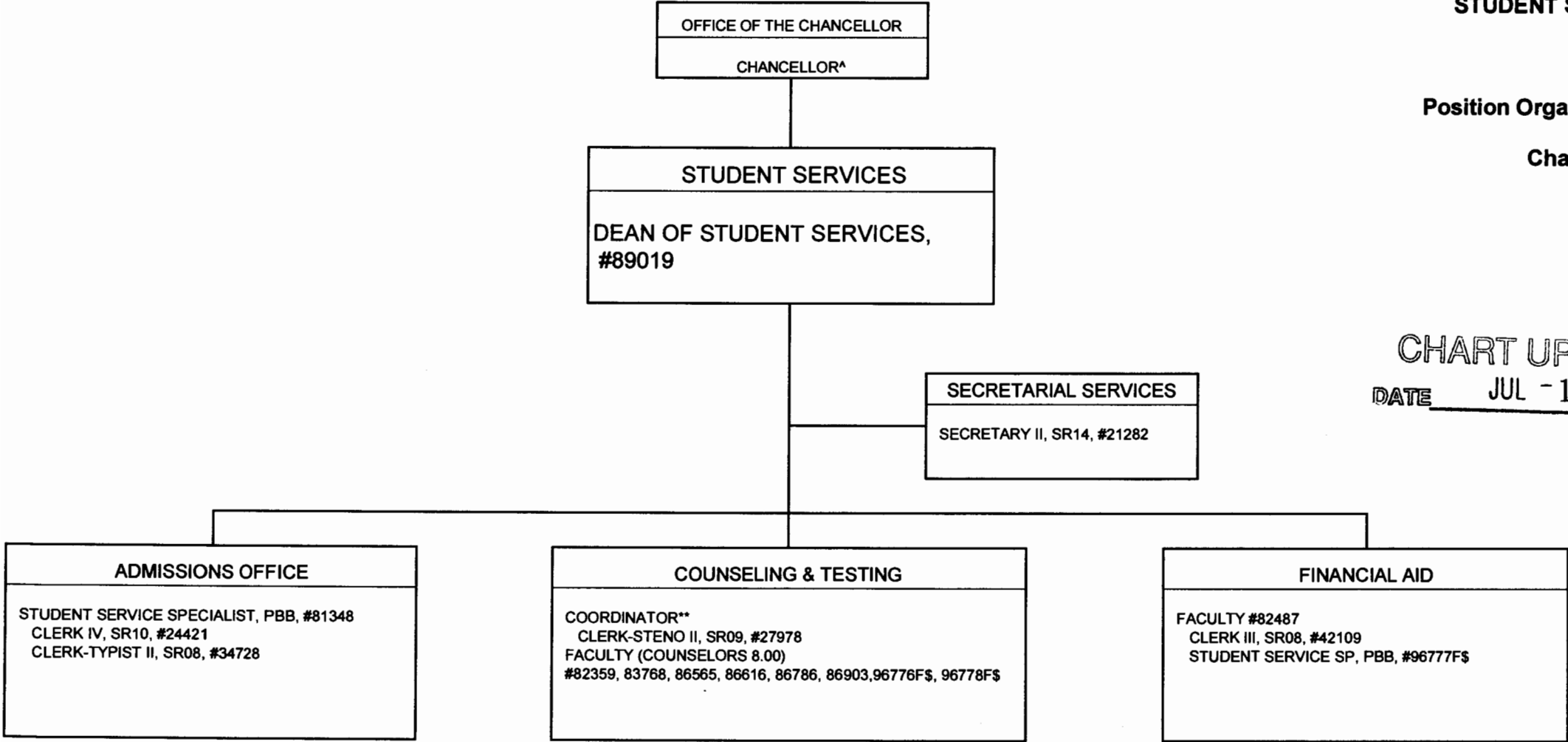
GENERAL FUND Perm 25.50

STATE OF HAWAI'I
UNIVERSITY OF HAWAI'I
KAUA'I COMMUNITY COLLEGE
STUDENT SERVICES

Position Organization Chart

Chart IV

CHART UPDATED
DATE JUL - 1 2005

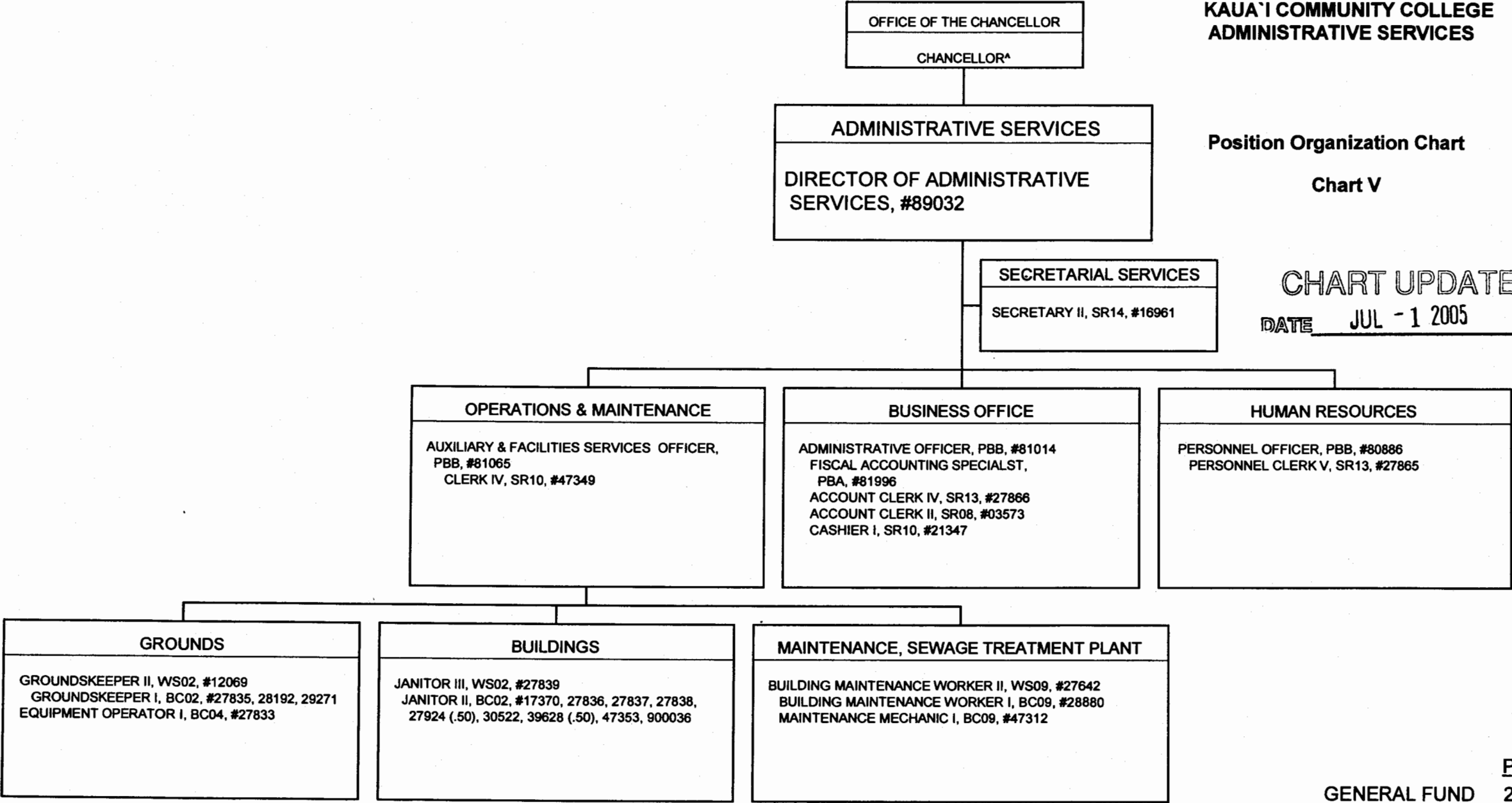


^ Excluded from position count this chart
** Coordinator is appointed from among faculty positions within the unit.
\$ Position to be established

STATE OF HAWAII
UNIVERSITY OF HAWAII
KAUA'I COMMUNITY COLLEGE
ADMINISTRATIVE SERVICES

Position Organization Chart
Chart V

CHART UPDATED
DATE JUL - 1 2005



GENERAL FUND Perm
28.00

^ Excluded from position count this chart

STATE OF HAWAII
UNIVERSITY OF HAWAII
KAUA'I COMMUNITY COLLEGE
CONTINUING EDUCATION & TRAINING

Position Organization Chart
Chart VI

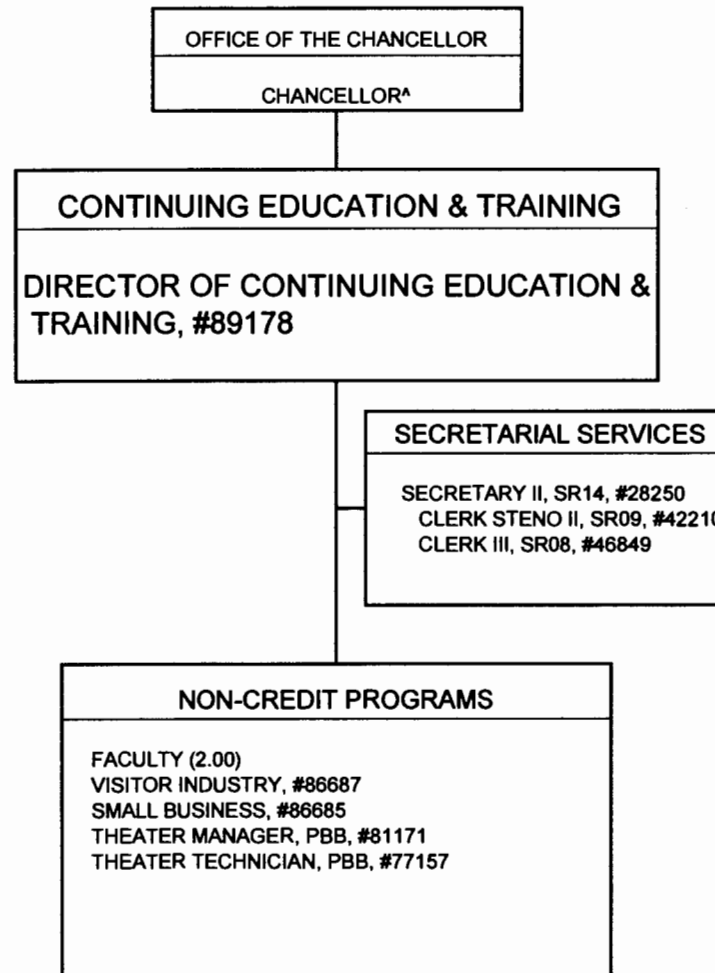


CHART UPDATED
DATE JUL -1 2005

Excluded from position count this chart

GENERAL FUND 8.00