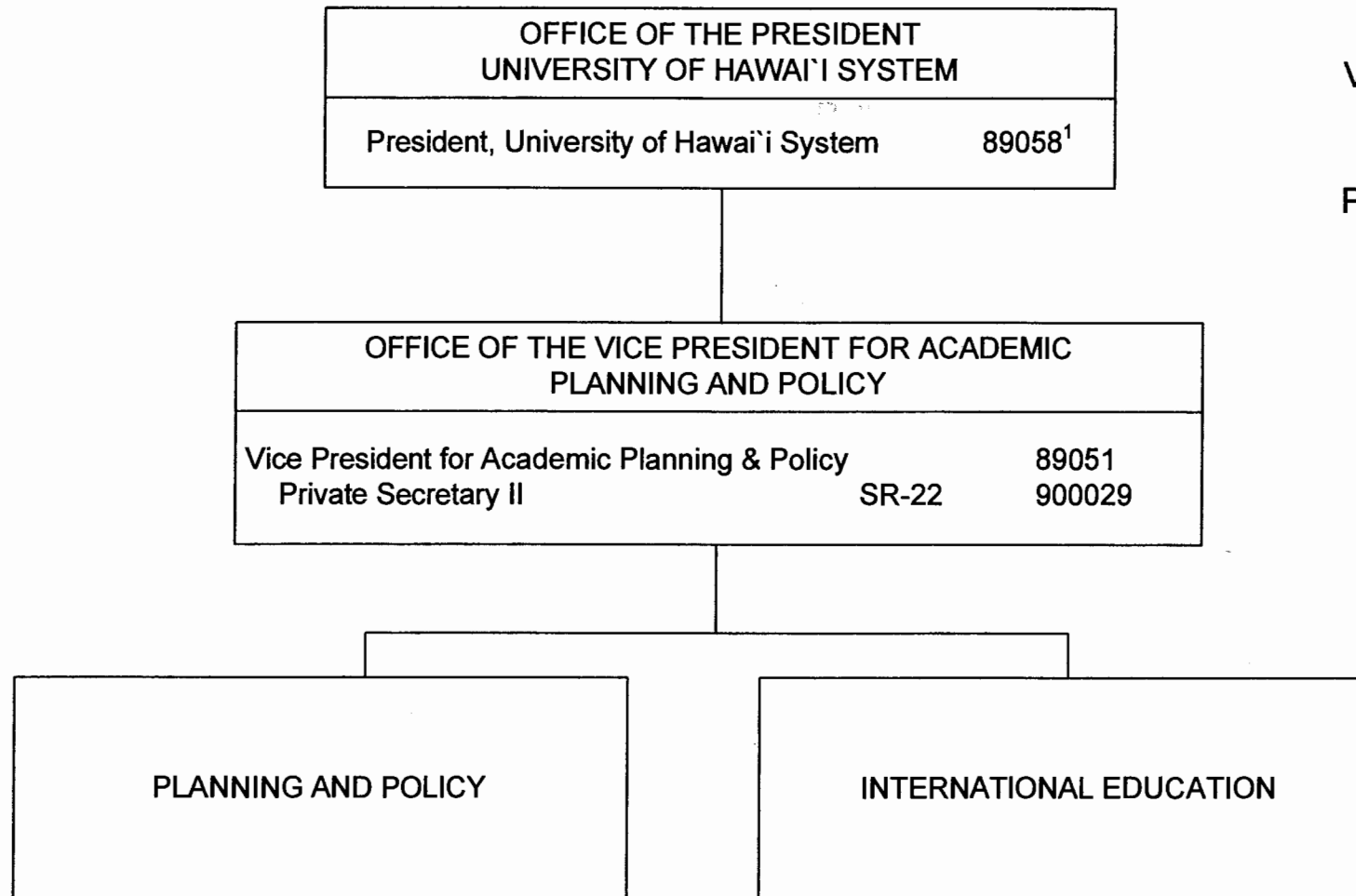


STATE OF HAWAII  
UNIVERSITY OF HAWAII  
SYSTEMWIDE ADMINISTRATION  
VICE PRESIDENT FOR ACADEMIC  
PLANNING AND POLICY

POSITION ORGANIZATION CHART

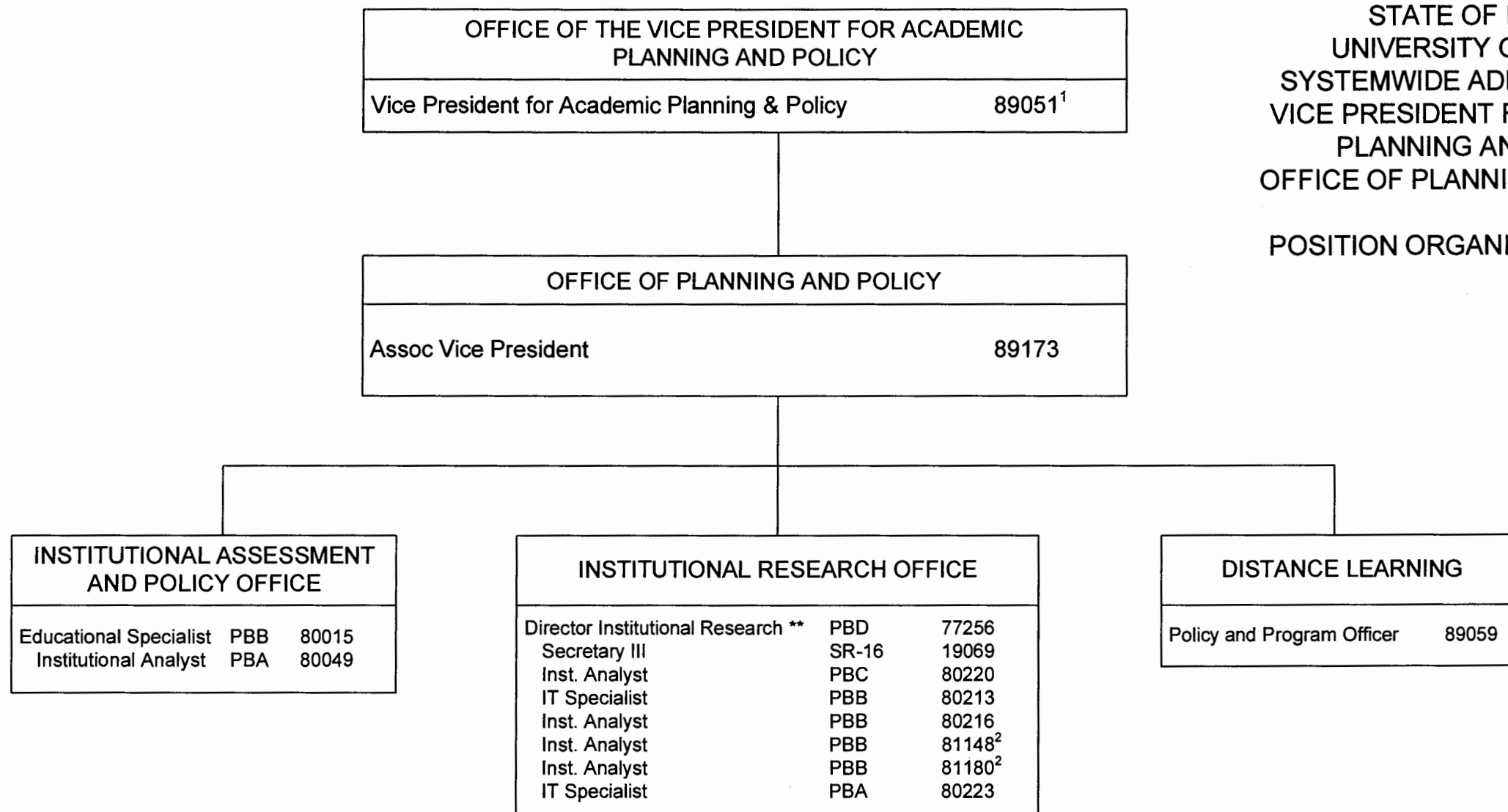


<sup>1</sup> Excluded from position count

CHART UPDATED  
JUL -1 2005  
DATE \_\_\_\_\_

General Funds 2.00 Perm

STATE OF HAWAII  
 UNIVERSITY OF HAWAII  
 SYSTEMWIDE ADMINISTRATION  
 VICE PRESIDENT FOR ACADEMIC  
 PLANNING AND POLICY  
 OFFICE OF PLANNING AND POLICY  
 POSITION ORGANIZATION CHART



\*\* Broad Band title Institutional Support

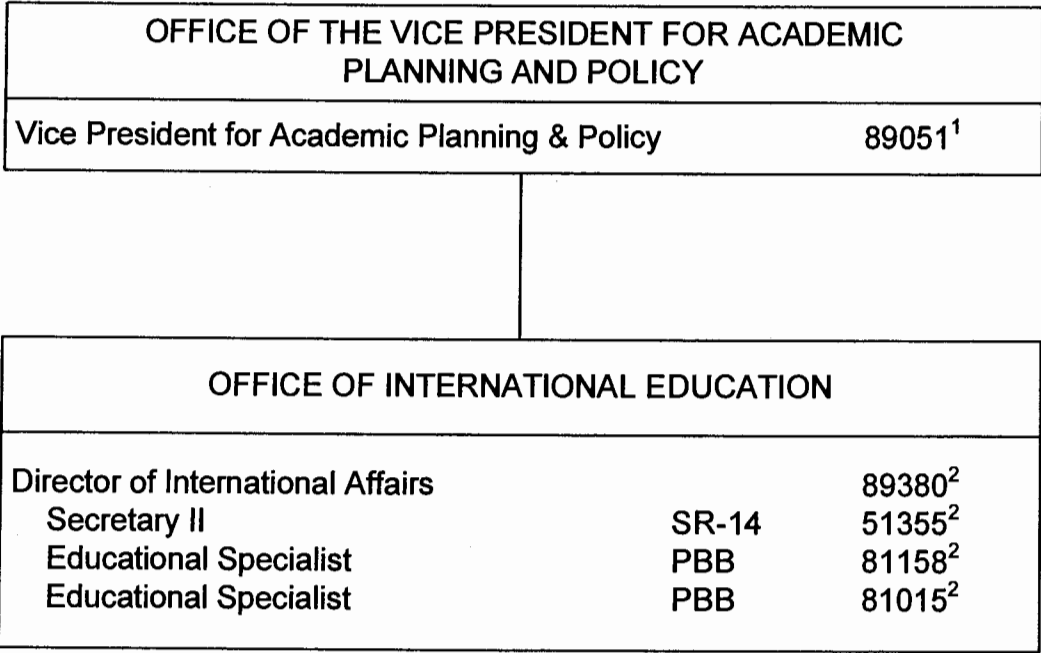
<sup>1</sup> To be redescribed; excluded from position count

<sup>2</sup> Part of UOH 902 appropriation reflected organizationally on this chart

CHART UPDATED  
 DATE JUL - 1 2005

STATE OF HAWAII  
UNIVERSITY OF HAWAII  
SYSTEMWIDE ADMINISTRATION  
VICE PRESIDENT FOR ACADEMIC  
PLANNING AND POLICY  
OFFICE OF INTERNATIONAL EDUCATION

POSITION ORGANIZATION CHART



<sup>1</sup> Excluded from position count  
<sup>2</sup> To be redescribed

CHART UPDATED  
JUL - 1 2005  
DATE \_\_\_\_\_

Perm  
General Funds 4.00