

STATE OF HAWAII  
UNIVERSITY OF HAWAII  
UNIVERSITY OF HAWAII AT HILO  
ADMINISTRATIVE AFFAIRS  
POSITION ORGANIZATIONAL CHART  
CHART VII

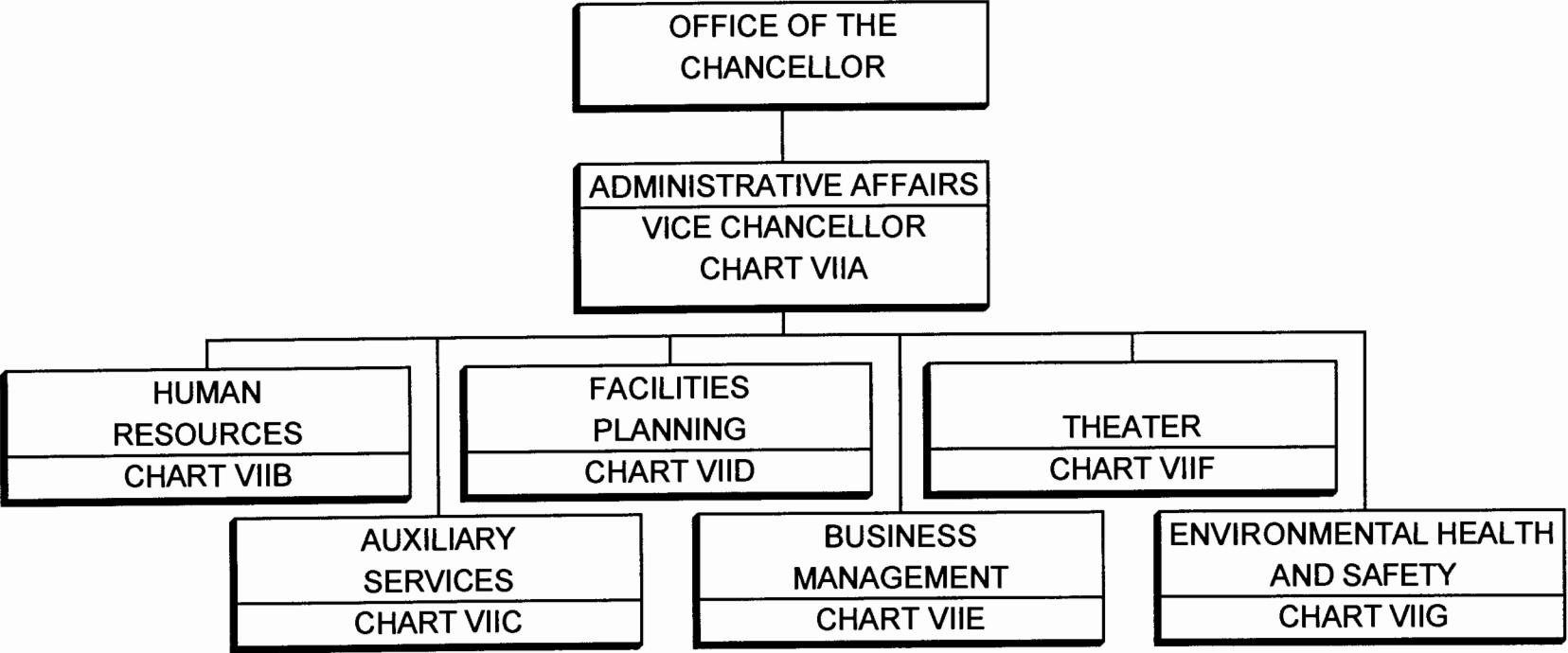


CHART UPDATED

DATE JUL - 1 2005

STATE OF HAWAII  
UNIVERSITY OF HAWAII  
UNIVERSITY OF HAWAII AT HILO  
ADMINISTRATIVE AFFAIRS  
VICE CHANCELLOR'S OFFICE  
POSITION ORGANIZATIONAL CHART  
CHART VIA

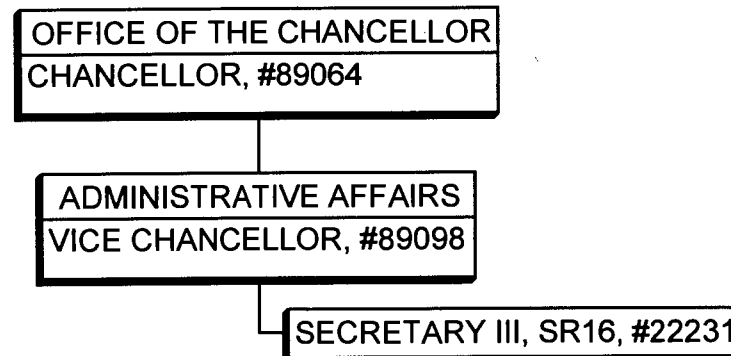


CHART UPDATED  
DATE JUL - 1 2005

STATE OF HAWAII  
UNIVERSITY OF HAWAII  
UNIVERSITY OF HAWAII AT HILO  
ADMINISTRATIVE AFFAIRS  
HUMAN RESOURCES  
POSITION ORGANIZATIONAL CHART  
CHART VIIB

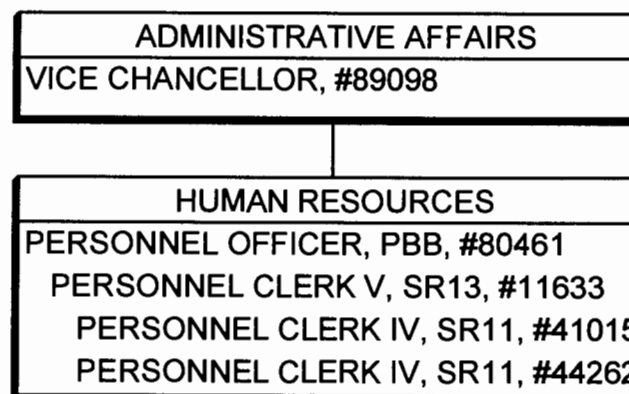
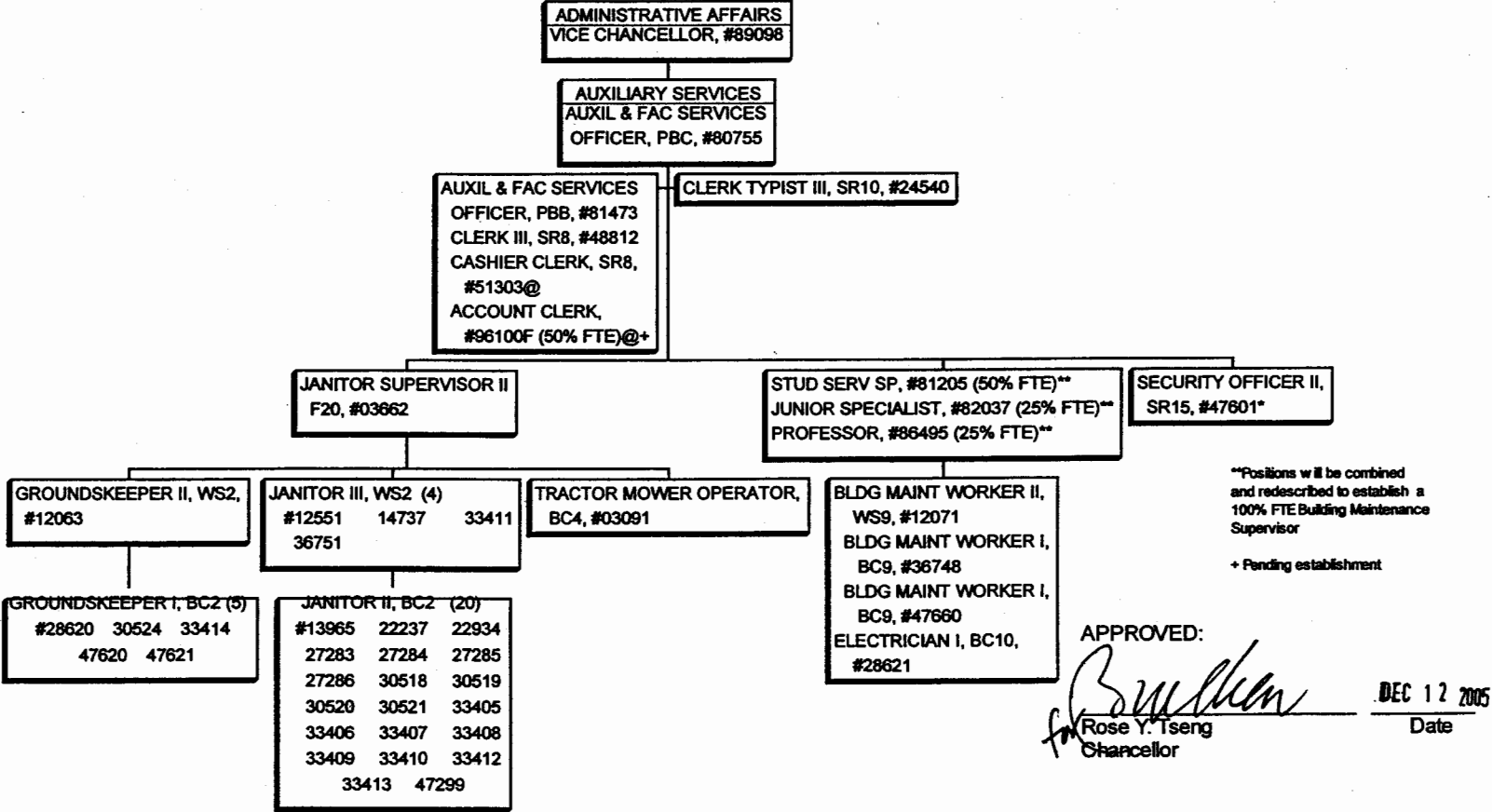


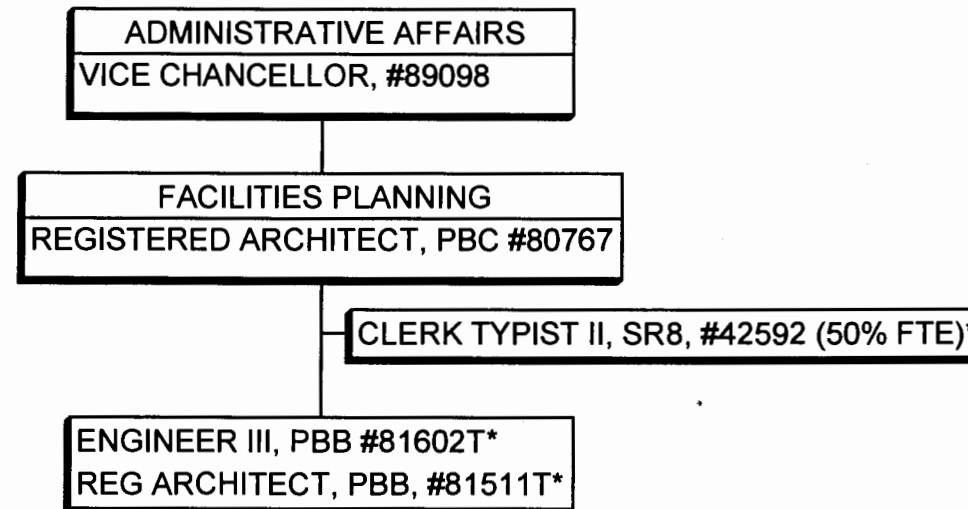
CHART UPDATED  
DATE JUL - 1 2005

STATE OF HAWAII  
UNIVERSITY OF HAWAII AT HILO  
ADMINISTRATIVE AFFAIRS  
AUXILIARY SERVICES  
POSITION ORGANIZATION CHART  
CHART VIC



POSITIONS  
GENERAL FUND - 41.00  
TEMPORARY GENERAL FUND - 1.00\*  
REVOLVING FUND - 1.50@

STATE OF HAWAII  
UNIVERSITY OF HAWAII  
UNIVERSITY OF HAWAII AT HILO  
ADMINISTRATIVE AFFAIRS  
FACILITIES PLANNING  
POSITION ORGANIZATIONAL CHART  
CHART VIID



POSITIONS

GENERAL FUND - 1.00  
TEMPORARY GENERAL FUND - 2.50\*

CHART UPDATED  
DATE JUL - 1 2005

FACILITIES PLAN

STATE OF HAWAII  
 UNIVERSITY OF HAWAII  
 UNIVERSITY OF HAWAII AT HILO  
 ADMINISTRATIVE AFFAIRS  
 BUSINESS MANAGEMENT  
 POSITION ORGANIZATIONAL CHART  
 CHART VIIIE

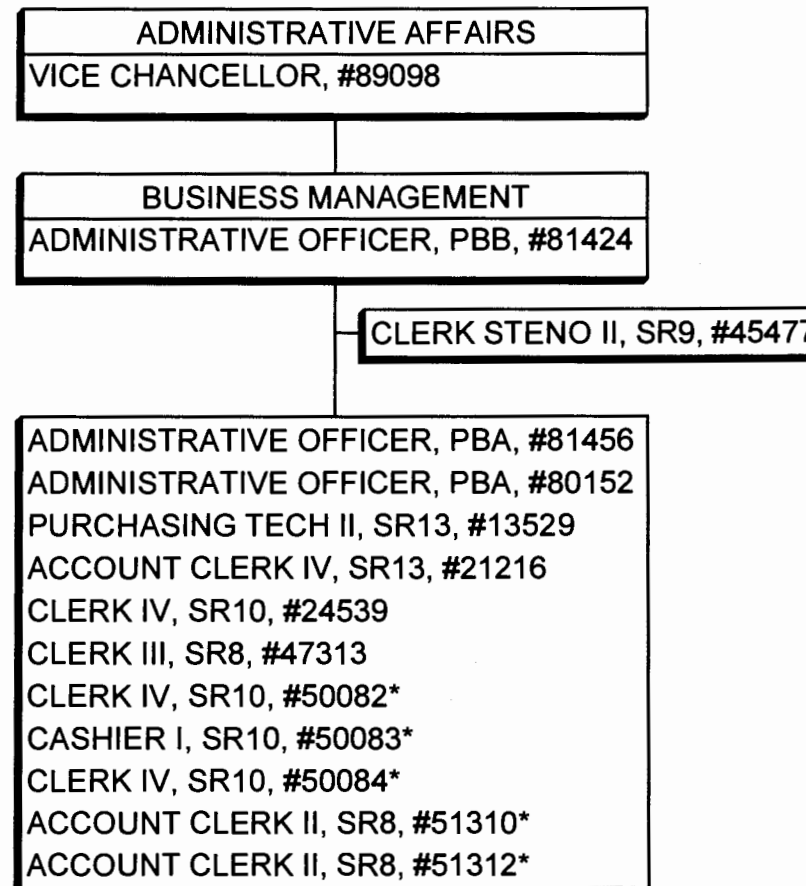


CHART UPDATED  
 JUL - 1 2005  
 DATE \_\_\_\_\_

BUSINESS

POSITIONS

GENERAL FUND - 8.00  
 TEMPORARY GENERAL FUND - 5.00\*

STATE OF HAWAII  
UNIVERSITY OF HAWAII  
UNIVERSITY OF HAWAII AT HILO  
ADMINISTRATIVE AFFAIRS  
THEATER  
POSITION ORGANIZATIONAL CHART  
CHART VIIIF

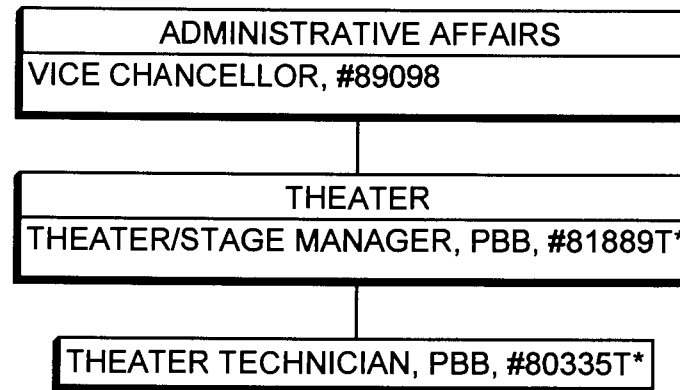


CHART UPDATED  
DATE JUL - 1 2005

STATE OF HAWAII  
UNIVERSITY OF HAWAII  
UNIVERSITY OF HAWAII AT HILO  
ADMINISTRATIVE AFFAIRS  
ENVIRONMENTAL HEALTH AND SAFETY  
POSITION ORGANIZATIONAL CHART  
CHART VIIG

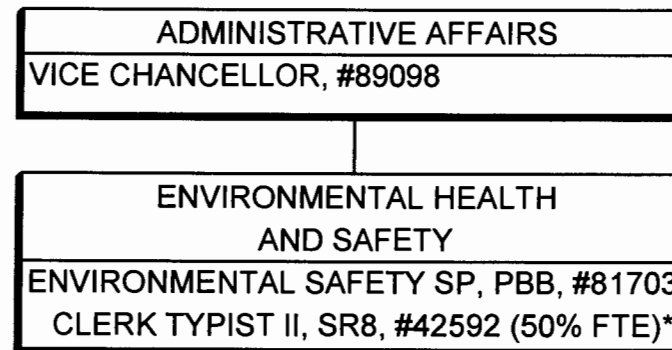
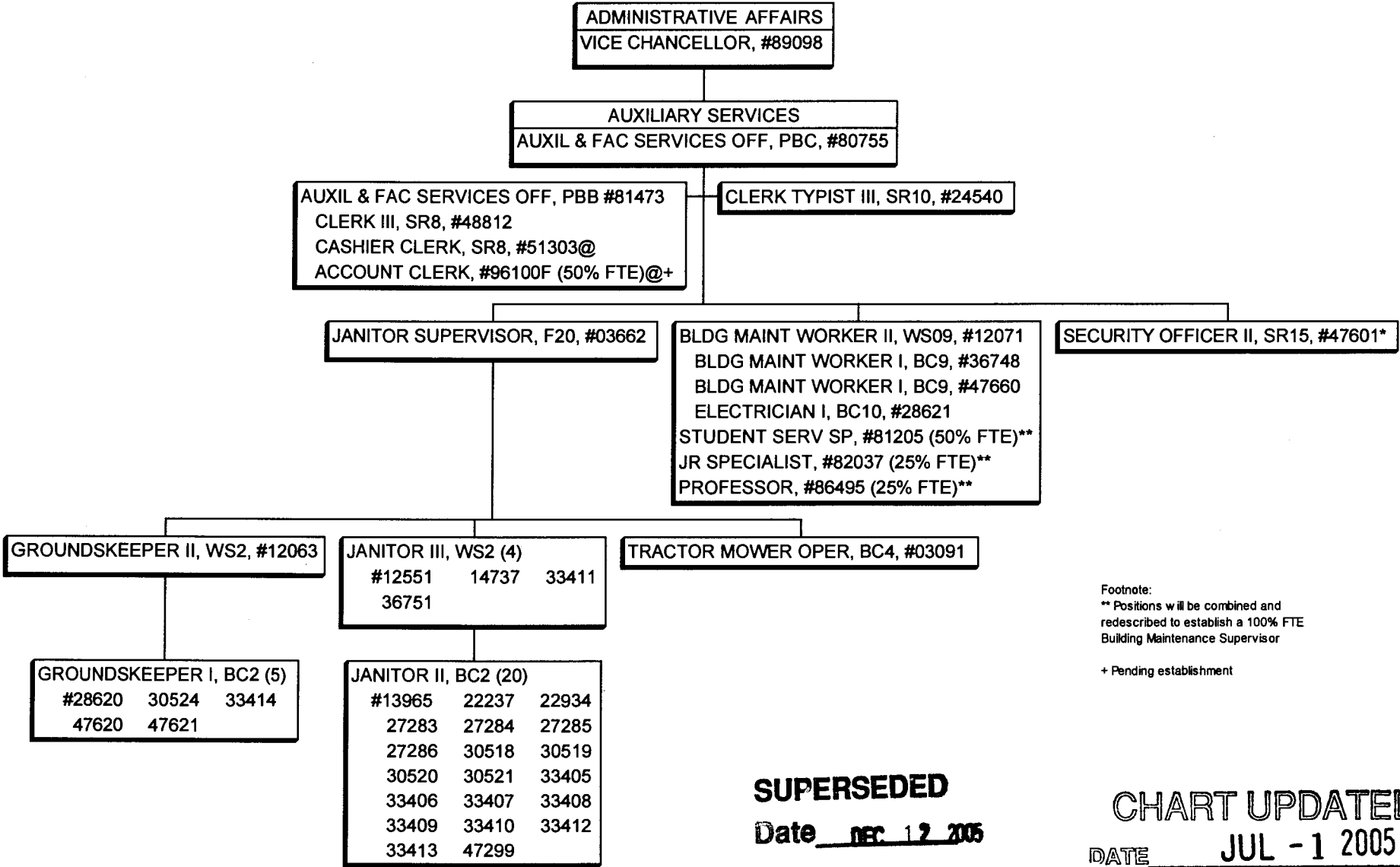


CHART UPDATED  
DATE JUL - 1 2005

POSITIONS

GENERAL FUND - 1.00  
TEMPORARY GENERAL FUND - 0.50\*





Footnote:  
\*\* Positions will be combined and  
redescribed to establish a 100% FTE  
Building Maintenance Supervisor  
  
+ Pending establishment

**SUPERSEDED**  
Date DEC 12 2005

**CHART UPDATED**  
DATE JUL -1 2005

POSITIONS  
GENERAL FUND - 41.00  
TEMPORARY GENERAL FUND - 1.00\*  
REVOLVING FUND - 1.50@