

**CHART UPDATED**  
**DATE JUL -1 2005**

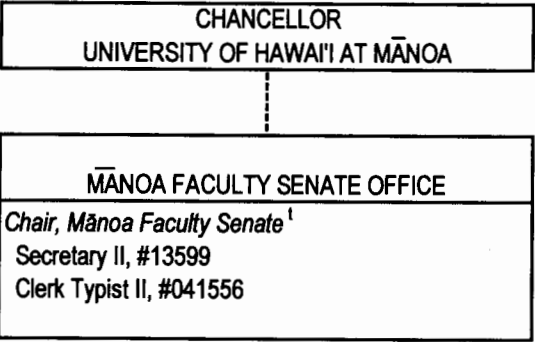
OFFICE OF THE CHANCELLOR UNIVERSITY OF HAWAII AT MĀNOA
Chancellor, #89261 Private Sec II SR-22, #100053 Administrative Assistant, #89365 Sec I SR-12, #15584 Institutional Support Specialist* Executive Assistant, #89117 Sec II SR-14, #15646 Special Advisor for Hawaiian Affairs* Faculty Athletic Representative** (.50)

\* New, position number to be determined

\*\* New, position number subject to classification

STATE OF HAWAII  
UNIVERSITY OF HAWAII  
UNIVERSITY OF HAWAII AT MĀNOA  
OFFICE OF THE CHANCELLOR  
ORGANIZATION CHART  
CHART I-A

CHART UPDATED  
DATE JUL - 1 2005



STATE OF HAWAII  
UNIVERSITY OF HAWAII  
OFFICE OF THE CHANCELLOR  
UNIVERSITY OF HAWAII AT MĀNOA  
**MĀNOA FACULTY SENATE OFFICE**  
ORGANIZATION CHART  
CHART I-B

<sup>1</sup> Position annually elected by the Mānoa Faculty Senate

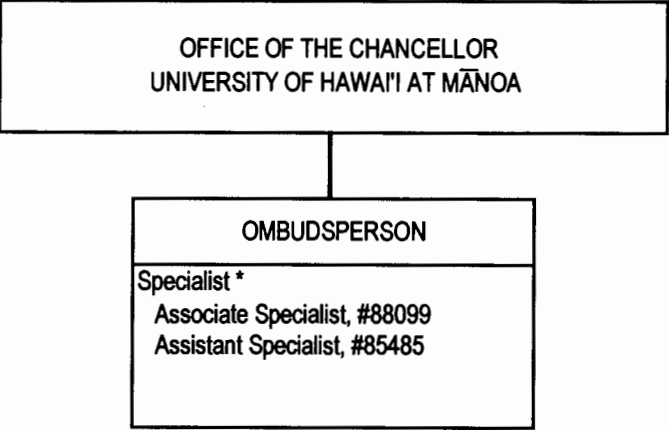
CHART UPDATED  
DATE JUL - 1 2005

STATE OF HAWAII  
 UNIVERSITY OF HAWAII  
 UNIVERSITY OF HAWAII AT MĀNOA  
 OFFICE OF THE CHANCELLOR  
**OFFICE OF COMMUNICATIONS**  
 ORGANIZATION CHART  
 CHART I-C

CHANCELLOR UNIVERSITY OF HAWAII AT MĀNOA		
OFFICE OF COMMUNICATIONS		
Dir of Communications		89145
Secretary I	SR-12	*
Public Info Officer	PBB	*
Pubic Info Officer	PBB	*

CHART UPDATED  
 JUL - 1 2005  
 DATE \_\_\_\_\_

\*new, position number to be determined



STATE OF HAWAI'I  
UNIVERSITY OF HAWAI'I  
UNIVERSITY OF HAWAI'I AT MĀNOA  
STATE OF HAWAI'I  
UNIVERSITY OF HAWAI'I  
UNIVERSITY OF HAWAI'I AT MĀNOA  
OFFICE OF THE CHANCELLOR  
**OFFICE OF OMBUDSPERSON**  
ORGANIZATION CHART  
CHART I-D

\* New, position number to be determined

CHART UPDATED  
JUL - 1 2005  
DATE \_\_\_\_\_