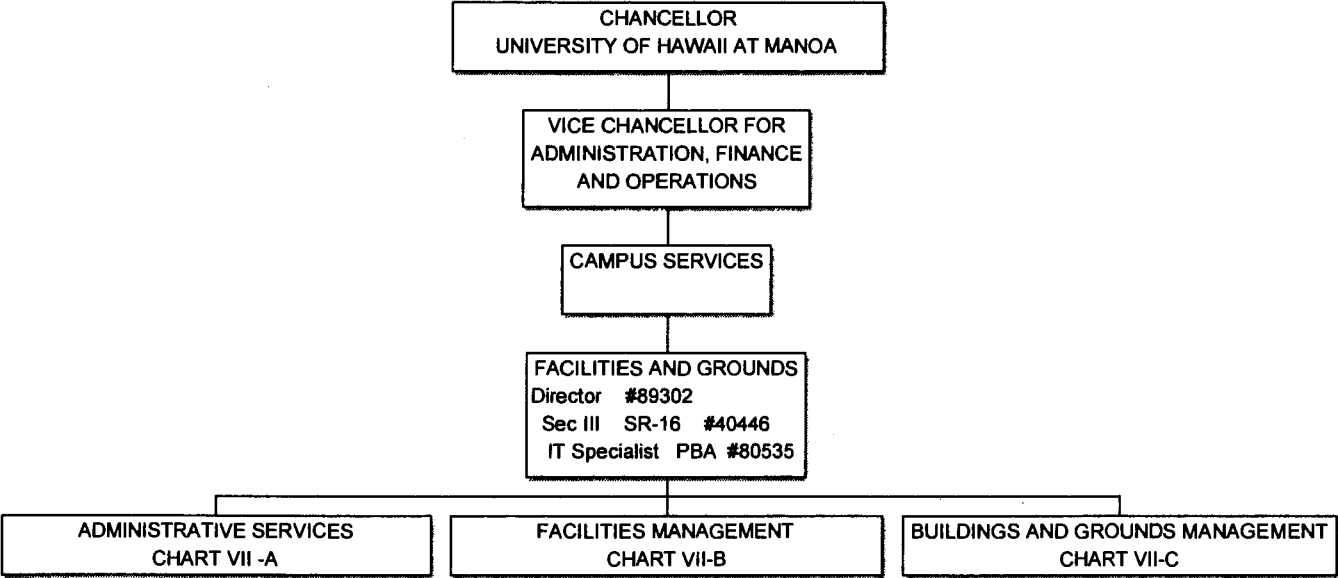


STATE OF HAWAII  
UNIVERSITY OF HAWAII AT MANOA  
OFFICE OF THE CHANCELLOR  
VICE CHANCELLOR FOR  
ADMINISTRATION, FINANCE AND OPERATIONS  
CAMPUS SERVICES  
FACILITIES AND GROUNDS

CHART VII



General Fund: 3.00

CHART UPDATED  
DATE JUL - 1 2005

STATE OF HAWAII  
UNIVERSITY OF HAWAII AT MANOA  
OFFICE OF THE CHANCELLOR  
VICE CHANCELLOR FOR  
ADMINISTRATION, FINANCE AND OPERATIONS  
CAMPUS SERVICES  
FACILITIES AND GROUNDS

CHART VII-A

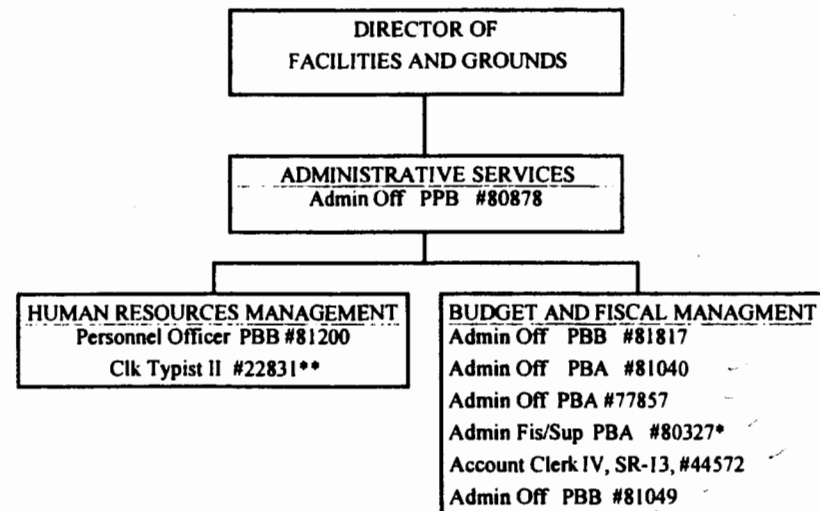


CHART UPDATED  
DATE JUL -1 2005

General Fund: 9.00

\*To be redescribed  
\*\* Position count from vacancy pool to be  
established using abolished position

STATE OF HAWAII  
UNIVERSITY OF HAWAII AT MANOA  
OFFICE OF THE CHANCELLOR  
VICE CHANCELLOR FOR  
ADMINISTRATION, FINANCE AND OPERATIONS  
CAMPUS SERVICES  
FACILITIES AND GROUNDS  
FACILITIES MANAGEMENT

CHART VII-B

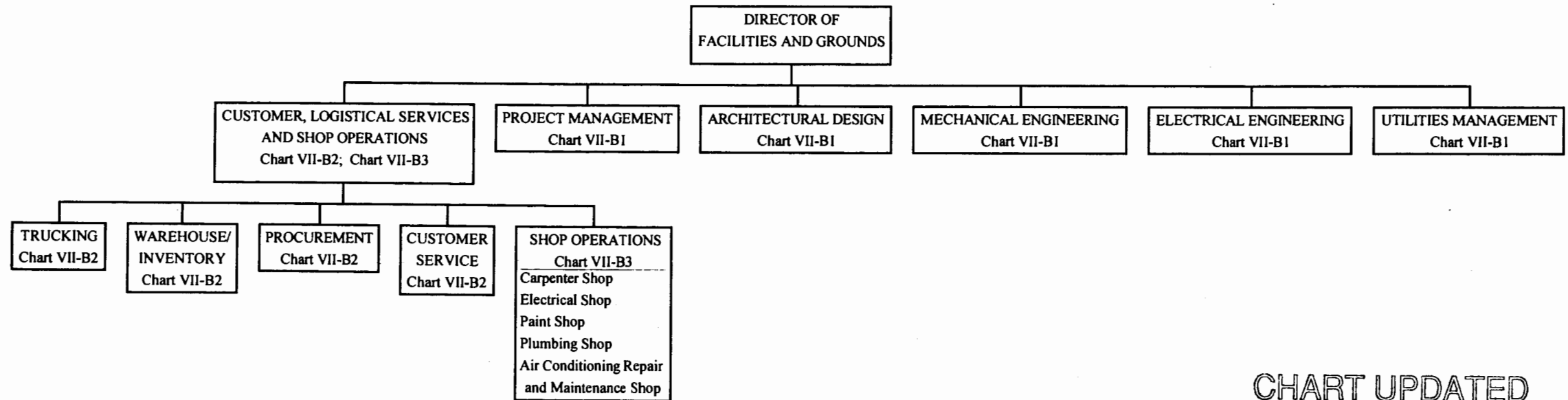


CHART UPDATED  
JUL - 1 2005  
DATE \_\_\_\_\_

STATE OF HAWAII  
UNIVERSITY OF HAWAII AT MANOA  
OFFICE OF THE CHANCELLOR  
VICE CHANCELLOR FOR  
ADMINISTRATION, FINANCE AND OPERATIONS  
CAMPUS SERVICES  
FACILITIES AND GROUNDS  
FACILITIES MANAGEMENT

CHART VII-B1

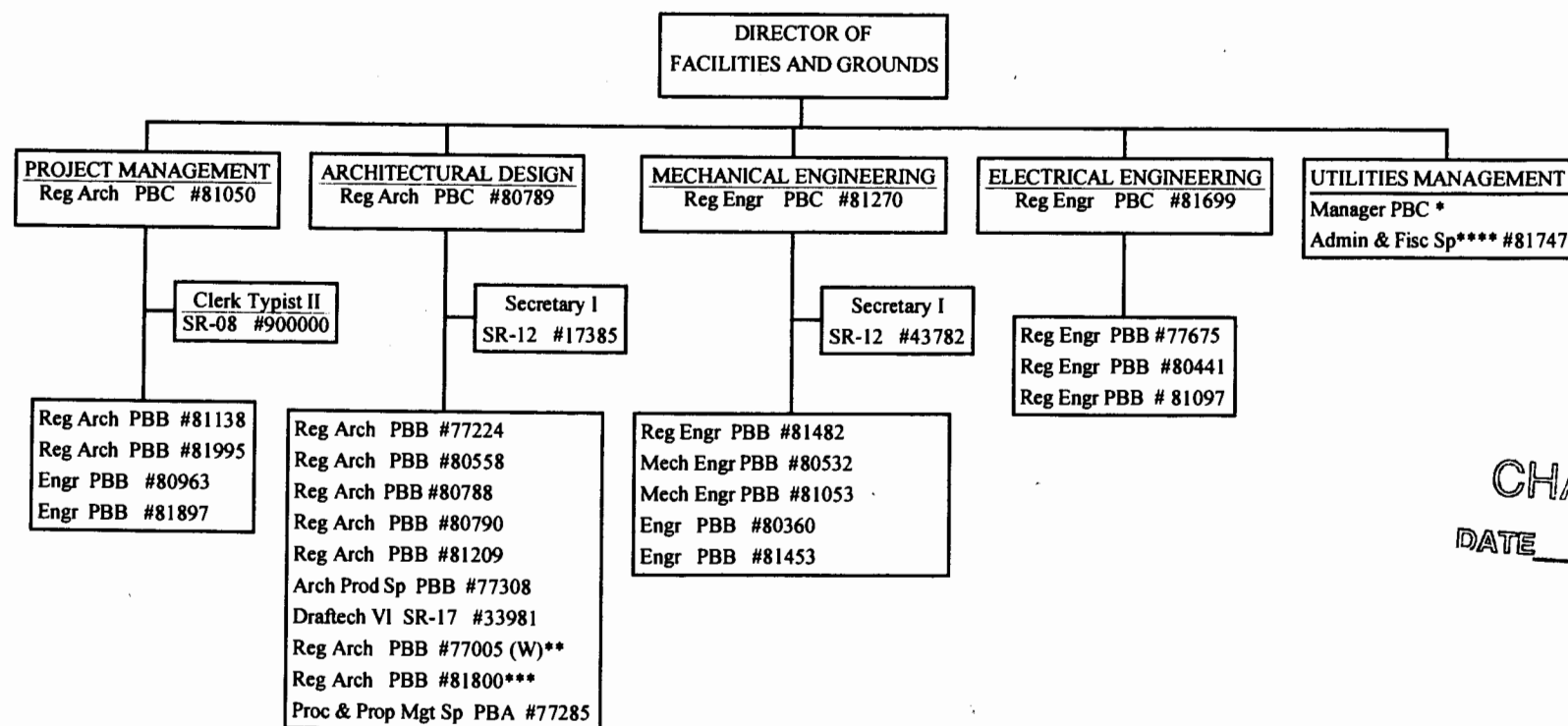


CHART UPDATED  
DATE JUL - 1 2005

\*New, position number to be determined  
\*\*\*\*To be converted to permanent

General Funds : 27.00  
(W) Revolving Funds 1.00 (\*\*Not  
included in our position count, position belongs  
to and funded by Student Hsg.)

\*\*\*1.00 Not included in our position count,  
position belongs to and funded by EEO.

STATE OF HAWAII  
UNIVERSITY OF HAWAII AT MANOA  
OFFICE OF THE CHANCELLOR  
VICE CHANCELLOR FOR  
ADMINISTRATION, FINANCE AND OPERATIONS  
CAMPUS SERVICES  
FACILITIES AND GROUNDS  
FACILITIES MANAGEMENT  
CHART VII-B2

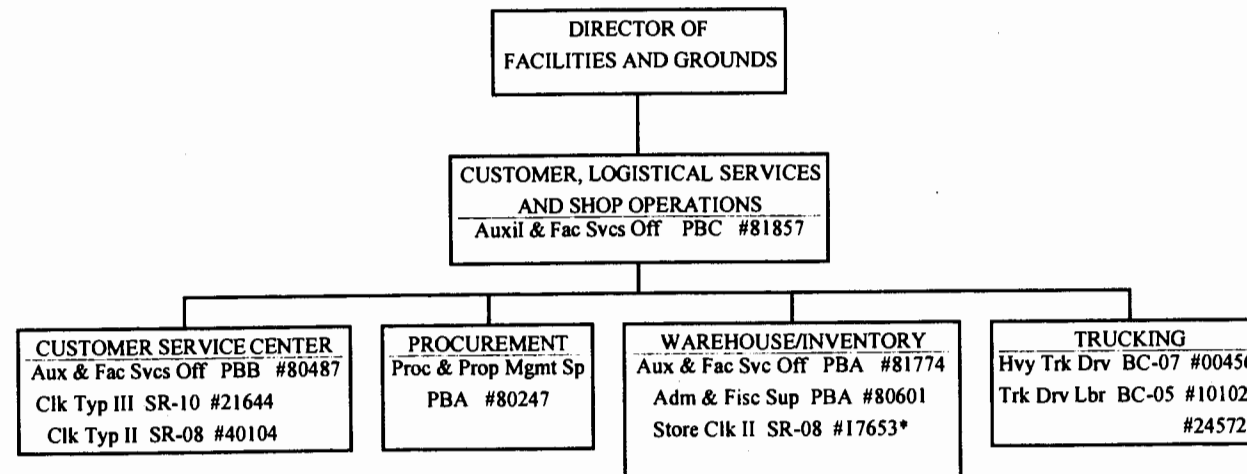


CHART UPDATED  
DATE JUL -1 2005

\*To be resdescribed

General Funds 11.00

STATE OF HAWAII  
UNIVERSITY OF HAWAII AT MANOA  
OFFICE OF THE CHANCELLOR  
VICE CHANCELLOR FOR  
ADMINISTRATION, FINANCE AND OPERATIONS  
CAMPUS SERVICES  
FACILITIES AND GROUNDS  
FACILITIES MANAGEMENT

CHART VII-B3

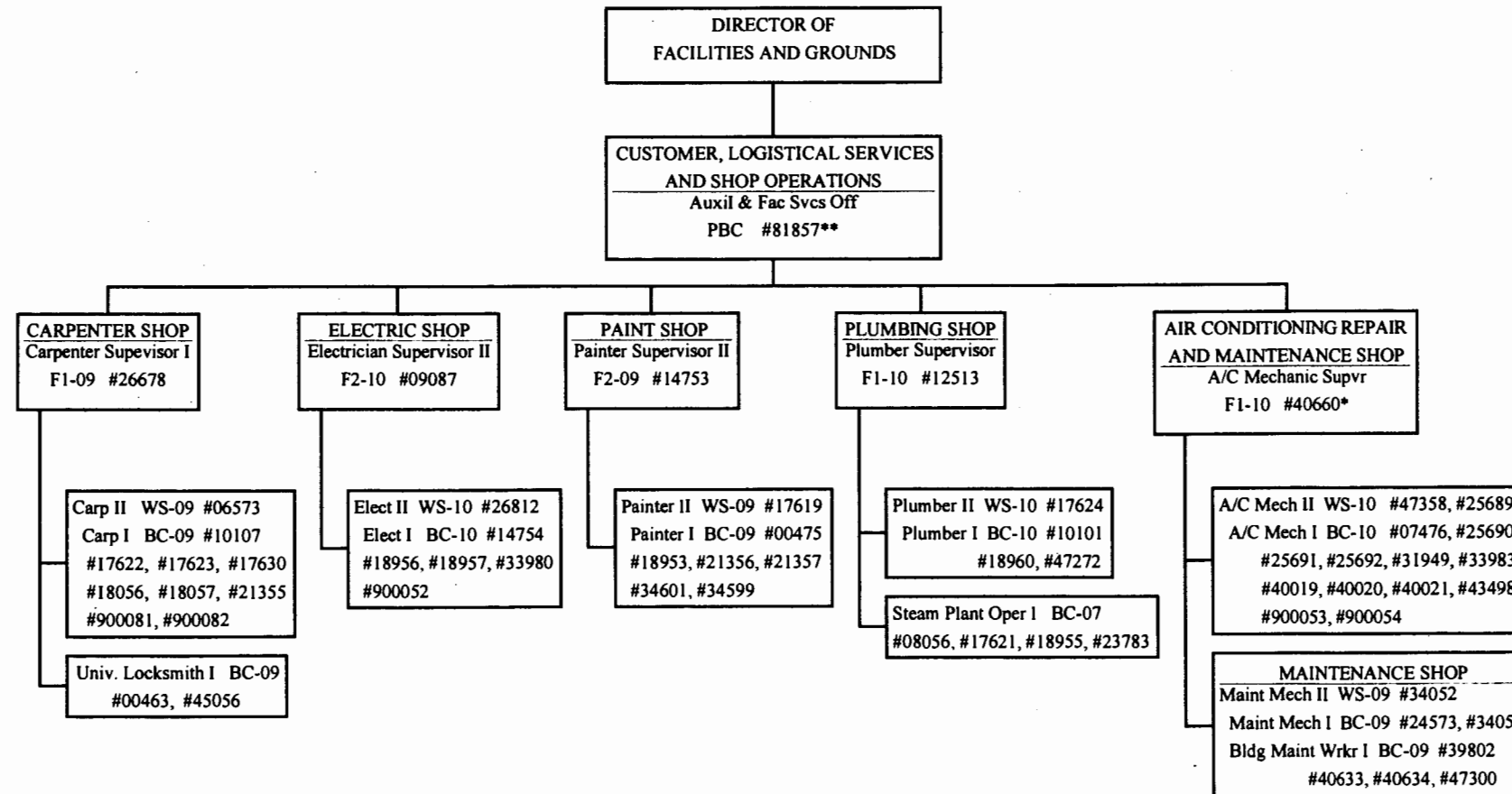


CHART UPDATED  
DATE JUL - 1 2005

\*To be redescribed

General Funds 59.00

\*\*Position count not included on this page.

STATE OF HAWAII  
UNIVERSITY OF HAWAII AT MANOA  
OFFICE OF THE CHANCELLOR  
VICE CHANCELLOR FOR  
ADMINISTRATION, FINANCE AND OPERATIONS  
CAMPUS SERVICES  
FACILITIES AND GROUNDS  
BUILDINGS AND GROUNDS MANAGEMENT

CHART VII-C

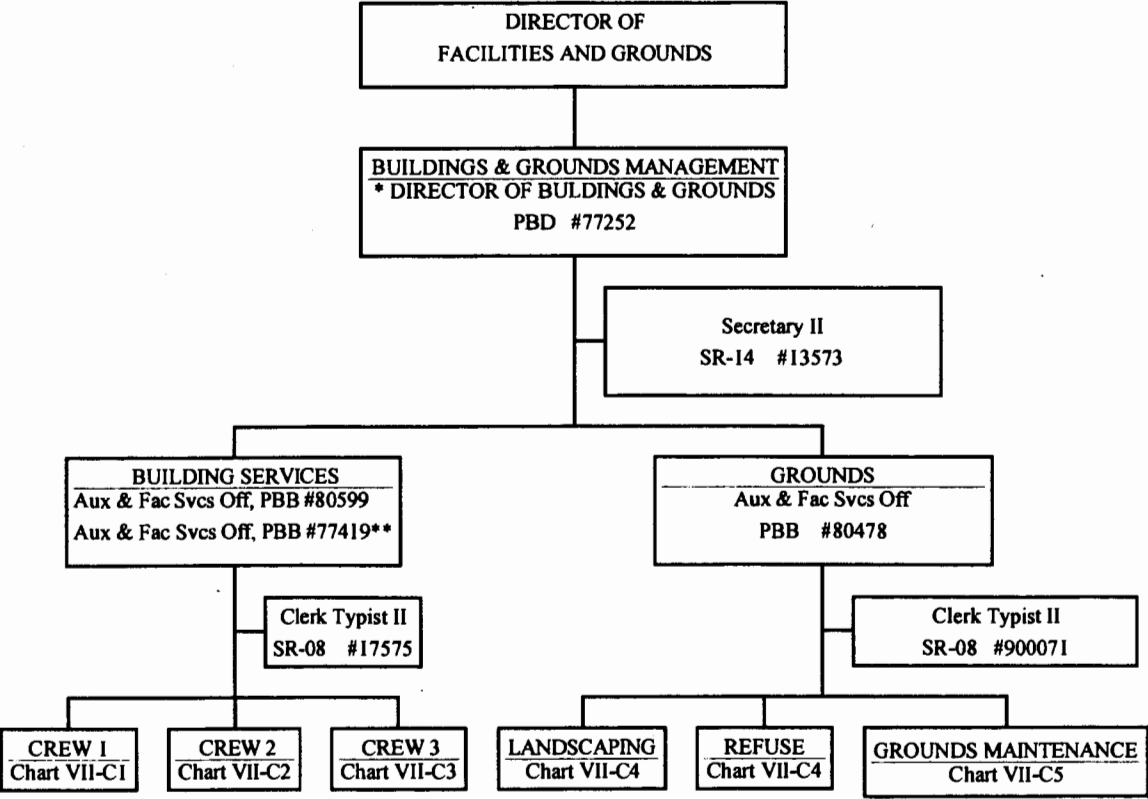


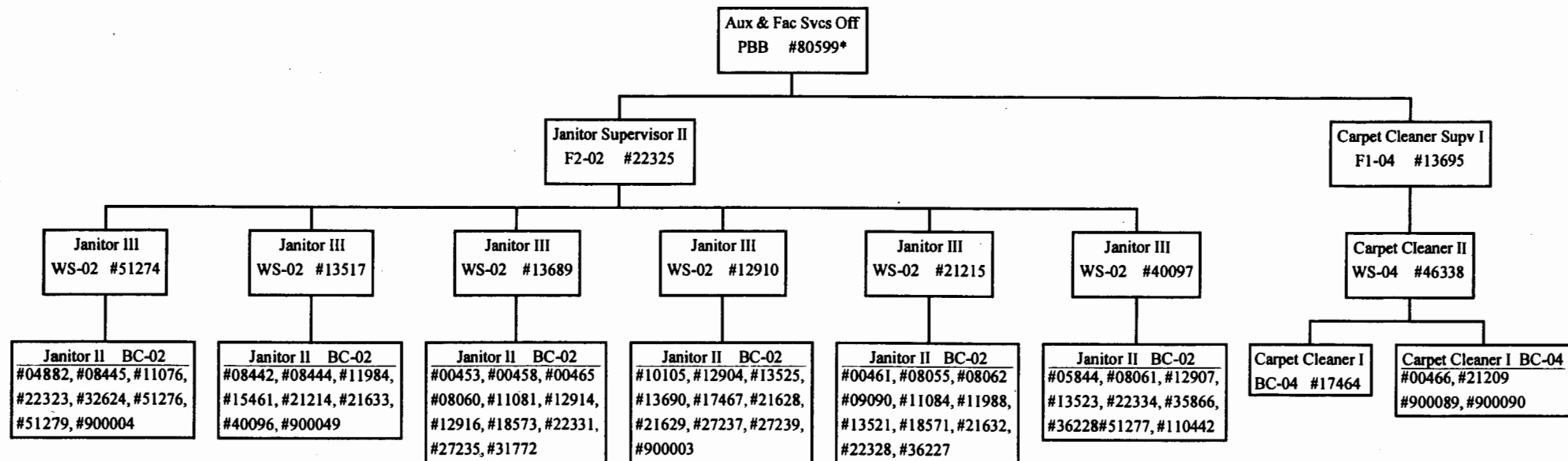
CHART UPDATED  
DATE JUL - 1 2005

\* Functional Code: Aux & Fac Svcs Off  
\*\* Assistant Building Svcs Mgr

CREW 1

STATE OF HAWAII  
UNIVERSITY OF HAWAII AT MANOA  
OFFICE OF THE CHANCELLOR  
VICE CHANCELLOR FOR  
ADMINISTRATION, FINANCE AND OPERATIONS  
CAMPUS SERVICES  
FACILITIES AND GROUNDS  
BUILDINGS AND GROUNDS MANAGEMENT

CHART VII-C1



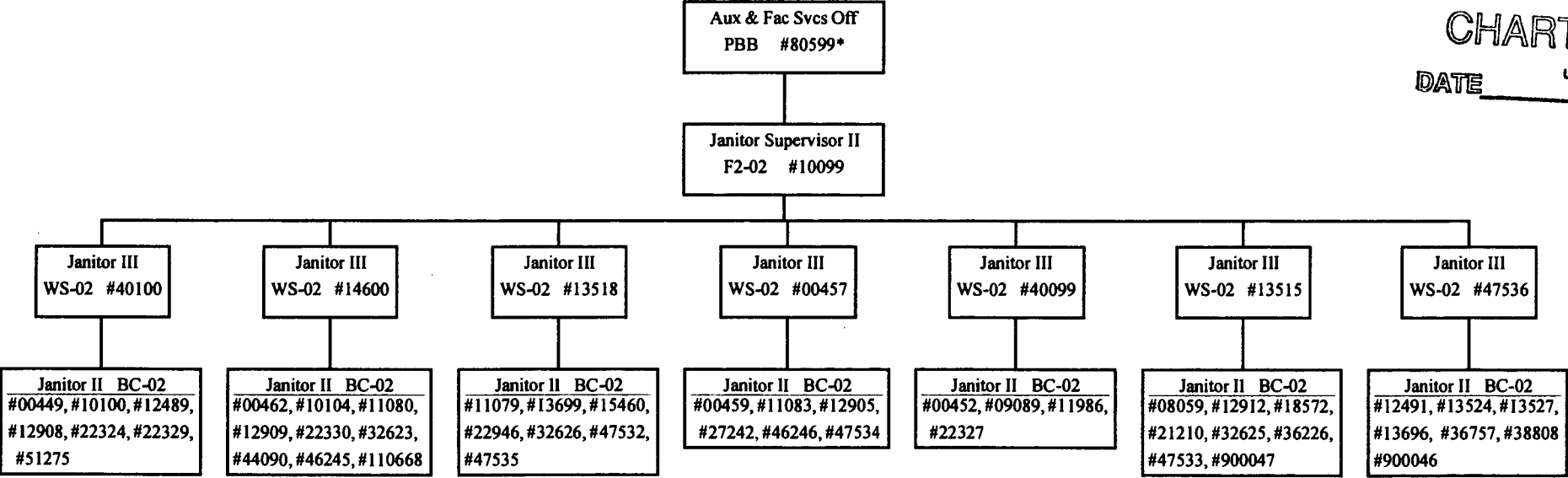
General Funds: 71.00  
(\*Position count not included on  
this page)

CHART UPDATED

DATE JUL - 1 2005



CHART UPDATED  
DATE JUL - 1 2005

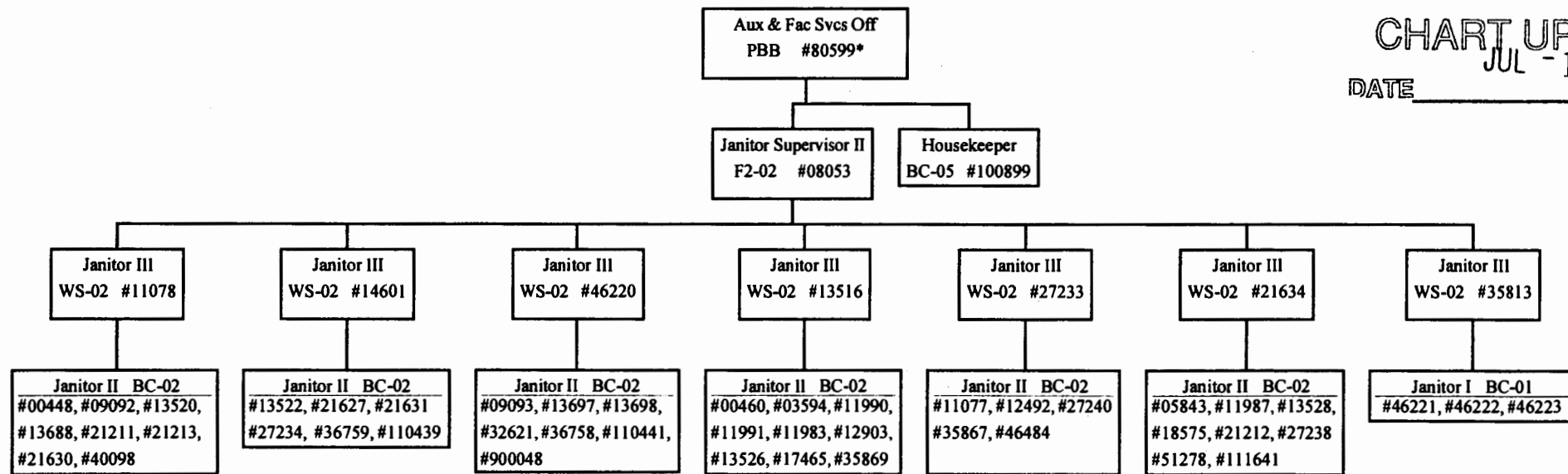


General Funds : 56.00  
(\*Position count not included on this page)

Crew 3

STATE OF HAWAII  
UNIVERSITY OF HAWAII AT MANOA  
OFFICE OF THE CHANCELLOR  
VICE CHANCELLOR FOR  
ADMINISTRATION, FINANCE AND OPERATIONS  
CAMPUS SERVICES  
FACILITIES AND GROUNDS  
BUILDINGS AND GROUNDS MANAGEMENT

CHART VII-C3



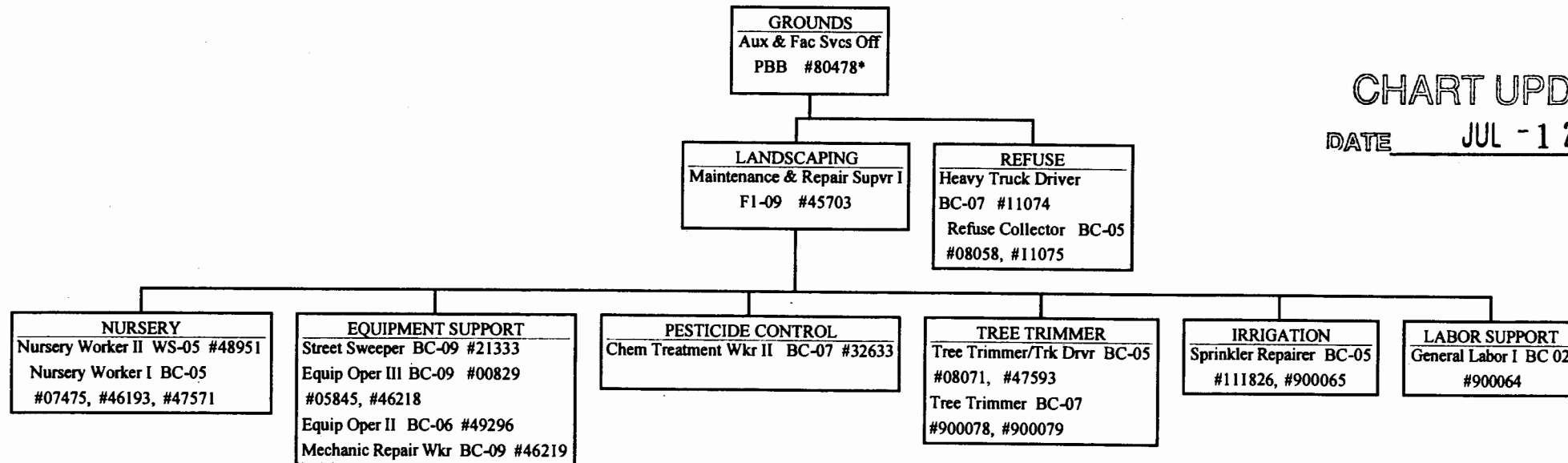
General Funds : 55.00

(\*Position count not included on this page)

STATE OF HAWAII  
 UNIVERSITY OF HAWAII AT MANOA  
 OFFICE OF THE CHANCELLOR  
 VICE CHANCELLOR FOR  
 ADMINISTRATION, FINANCE AND OPERATIONS  
 CAMPUS SERVICES  
 FACILITIES AND GROUNDS  
 BUILDINGS AND GROUNDS MANAGEMENT

CHART VII-C4

CHART UPDATED  
 DATE JUL - 1 2005



General Funds: 22.00  
 (\* Position count not included on this page)

STATE OF HAWAII  
 UNIVERSITY OF HAWAII AT MANOA  
 OFFICE OF THE CHANCELLOR  
 VICE CHANCELLOR FOR  
 ADMINISTRATION, FINANCE AND OPERATIONS  
 CAMPUS SERVICES  
 FACILITIES AND GROUNDS  
 BUILDINGS AND GROUNDS MANAGEMENT

CHART VII-C5

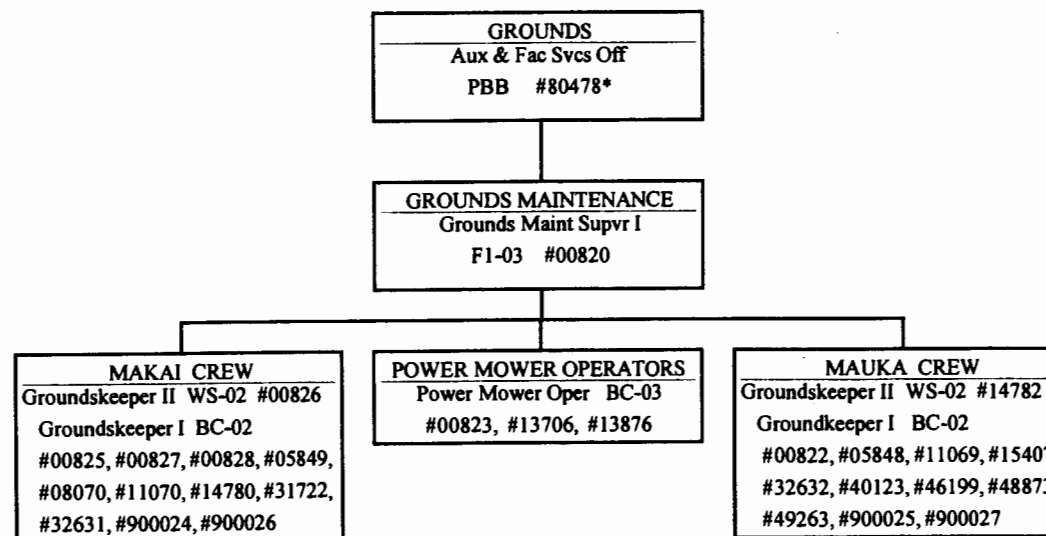


CHART UPDATED  
 JUL - 1 2005  
 DATE \_\_\_\_\_

General Funds: 28.00  
 (\*Position count not included on this page)