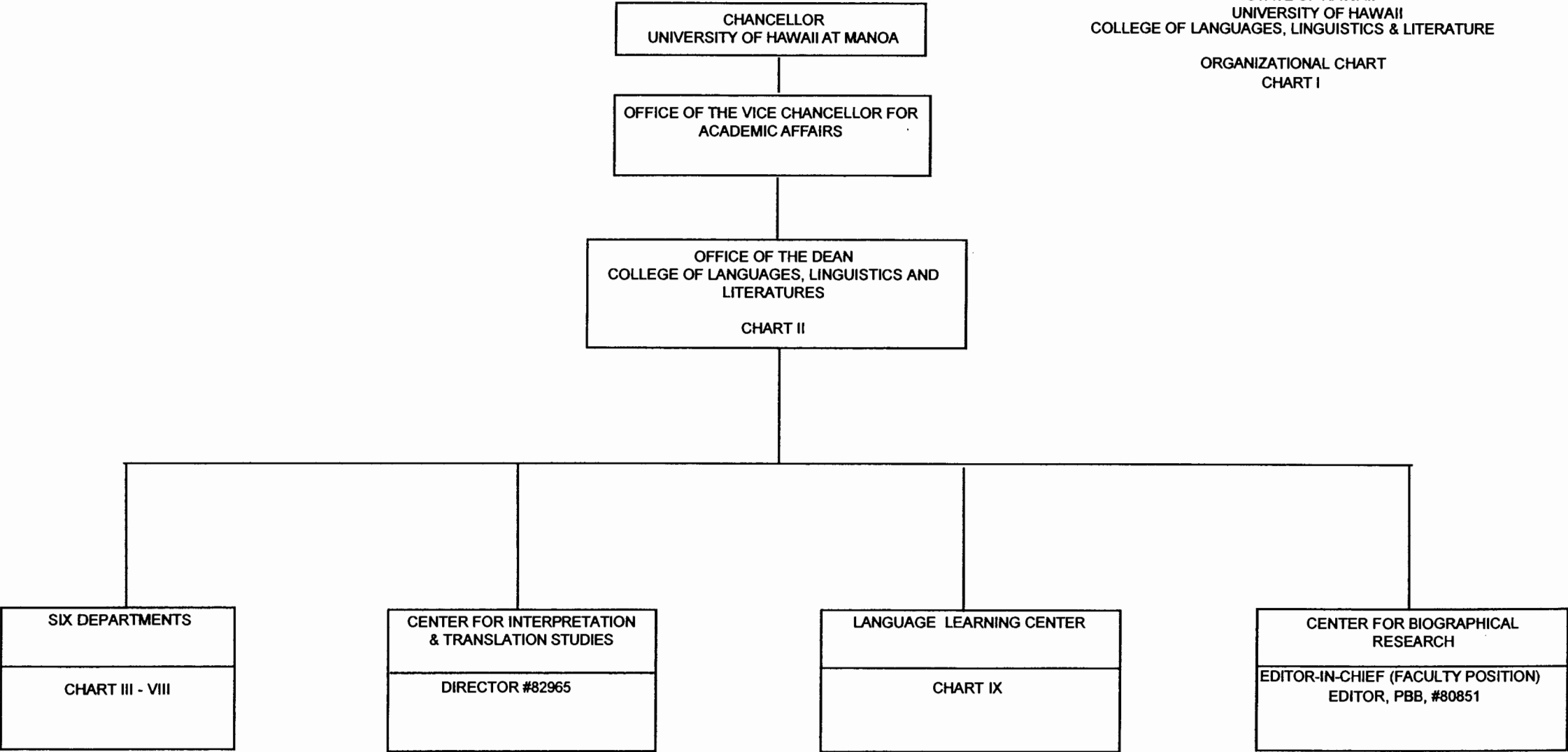


STATE OF HAWAII
UNIVERSITY OF HAWAII
COLLEGE OF LANGUAGES, LINGUISTICS & LITERATURE
ORGANIZATIONAL CHART
CHART I

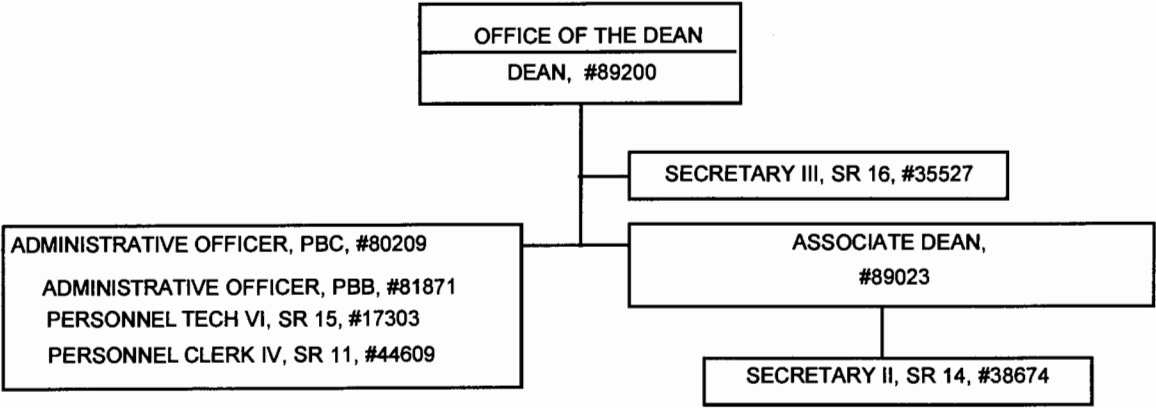


APPROVED: *JAD Mealy*
TITLE: Interim Dean
DATE: June 29, 2005

General Funds 2.00
CHART UPDATED
JUL 1 2005
DATE _____

STATE OF HAWAII
UNIVERSITY OF HAWAII AT MANOA
COLLEGE OF LANGUAGES, LINGUISTICS &
LITERATURE

ORGANIZATIONAL CHART
CHART II



General Funds 8.00

APPROVED: *JASO Mealy*
TITLE: Interim Dean
DATE: 9-13-05

CHART UPDATED
DATE SEP 13 2005

STATE OF HAWAII
UNIVERSITY OF HAWAII AT MANOA
COLLEGE OF LANGUAGES, LINGUISTICS & LITERATURE
INSTRUCTIONAL DEPARTMENT

ORGANIZATIONAL CHART
CHART III

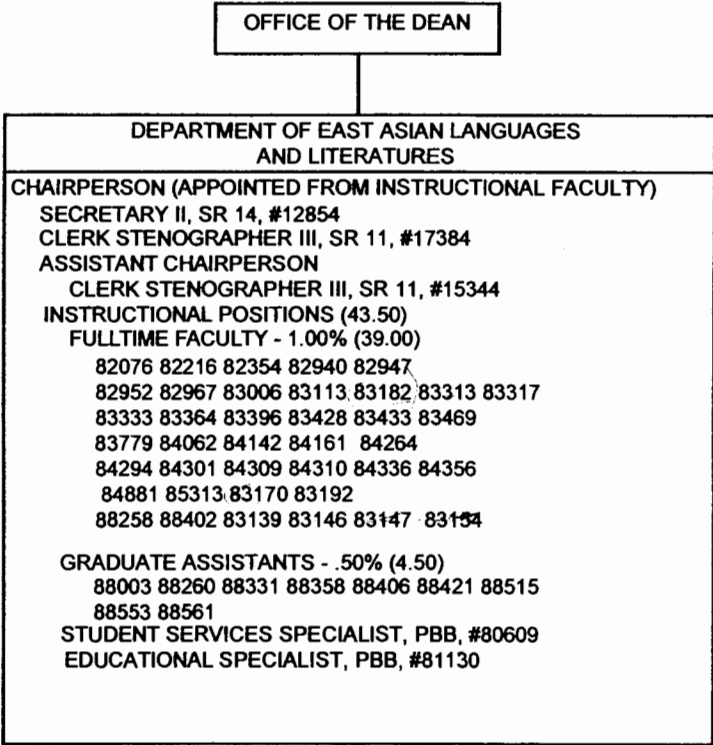


CHART UPDATED
DATE JUL 1 2005

General Funds 48.50

APPROVED: James Mealy
TITLE: Interim Dean
DATE: June 29, 2005

STATE OF HAWAII
UNIVERSITY OF HAWAII AT MANOA
COLLEGE OF LANGUAGES, LINGUISTICS & LITERATURE
INSTRUCTIONAL DEPARTMENT

ORGANIZATIONAL CHART
CHART IV

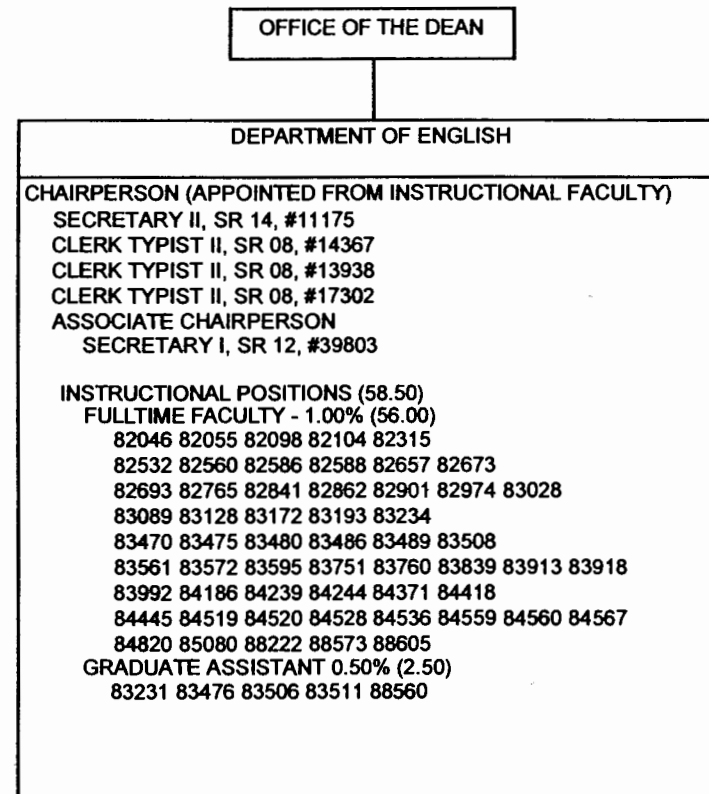


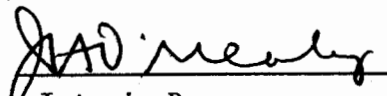
CHART UPDATED
DATE JUL - 1 2005

General Funds 63.50

APPROVED:

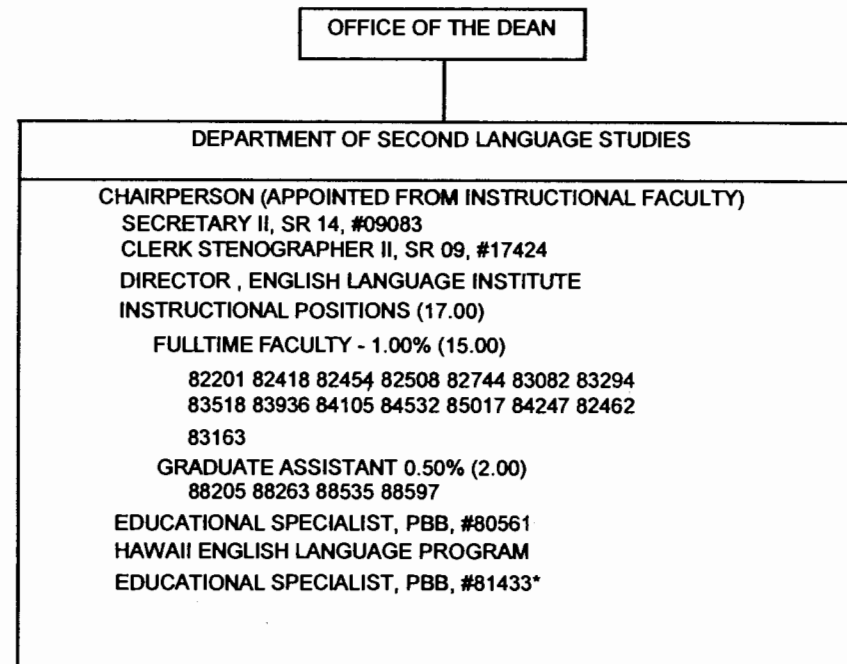
TITLE:

DATE:


Interim Dean
June 29, 2005

STATE OF HAWAII
UNIVERSITY OF HAWAII AT MANOA
COLLEGE OF LANGUAGES, LINGUISTICS & LITERATURE
INSTRUCTIONAL DEPARTMENT

ORGANIZATIONAL CHART
CHART V



* special funds

CHART UPDATED
DATE JUL - 1 2005

General Funds 20.00
Special Funds 1.00

APPROVED:

TITLE:

DATE:

J. A. O. Nealy

Interim Dean

June 29, 2005

STATE OF HAWAII
UNIVERSITY OF HAWAII AT MANOA
COLLEGE OF LANGUAGES, LINGUISTICS & LITERATURE
INSTRUCTIONAL DEPARTMENT

ORGANIZATIONAL CHART
CHART VI

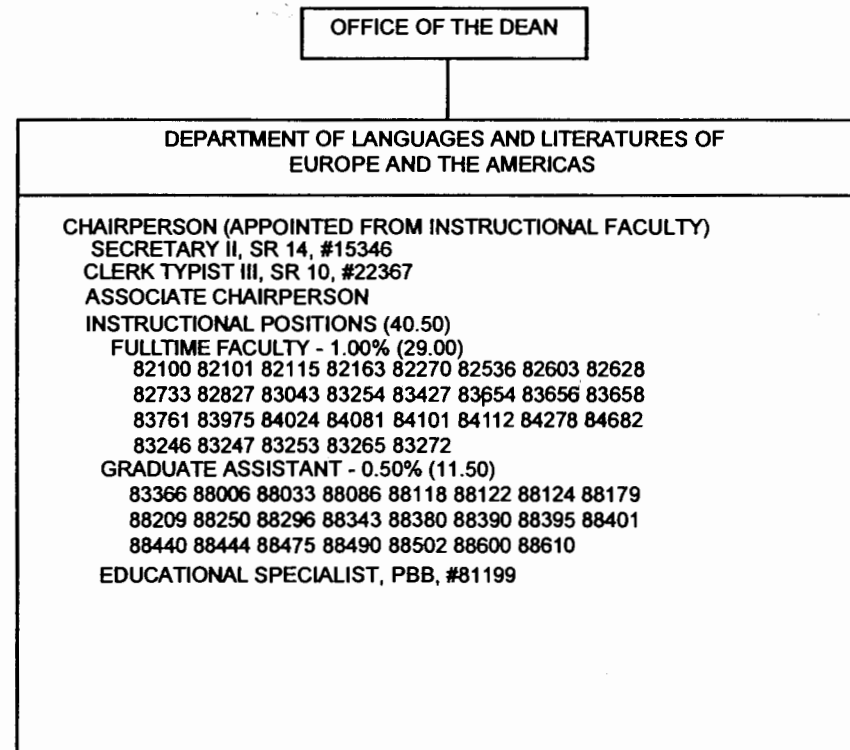


CHART UPDATED
DATE JUL - 1 2005

General Funds 43.50

APPROVED:

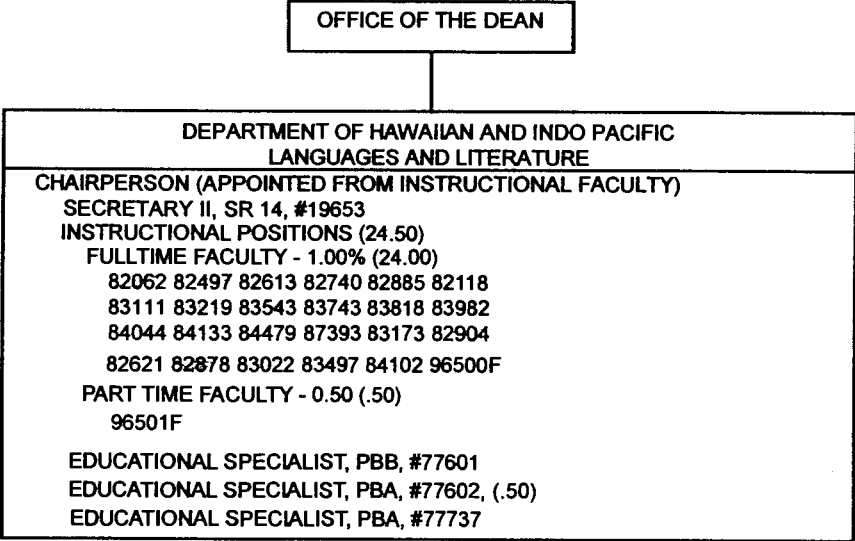
TITLE:

DATE:

JAD. Mealy
Interim Dean
June 29, 2005

STATE OF HAWAII
UNIVERSITY OF HAWAII AT MANOA
COLLEGE OF LANGUAGES, LINGUISTICS & LITERATURE
INSTRUCTIONAL DEPARTMENT

ORGANIZATIONAL CHART
CHART VII



General Funds 28.00

Pending Establishment: 96500F Assistant Professor
96501F Instructor

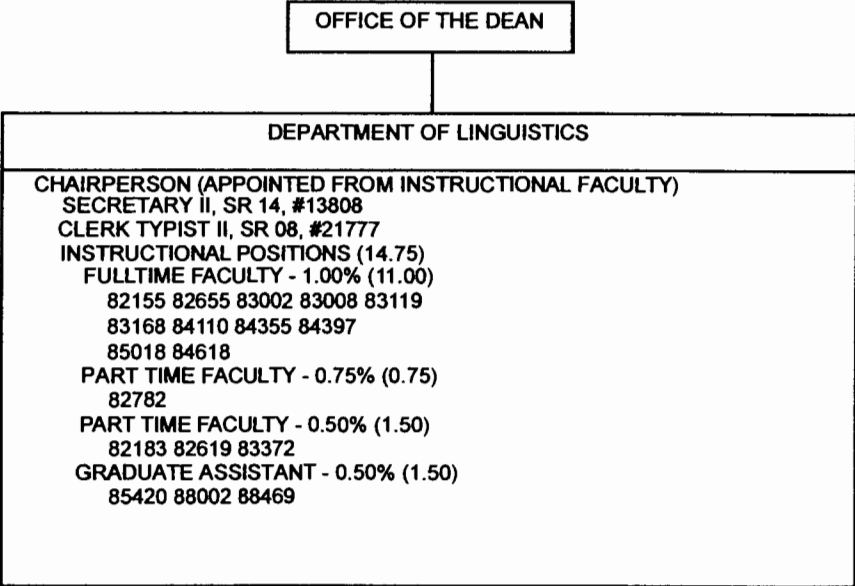
CHART UPDATED

DATE JUL - 1 2005

APPROVED: JAO Mealy
TITLE: Interim Dean
DATE: JUL 12 2005

STATE OF HAWAII
UNIVERSITY OF HAWAII AT MANOA
COLLEGE OF LANGUAGES, LINGUISTICS & LITERATURE
INSTRUCTIONAL DEPARTMENT

ORGANIZATIONAL CHART
CHART VIII



General Funds 16.75

APPROVED:

TITLE:

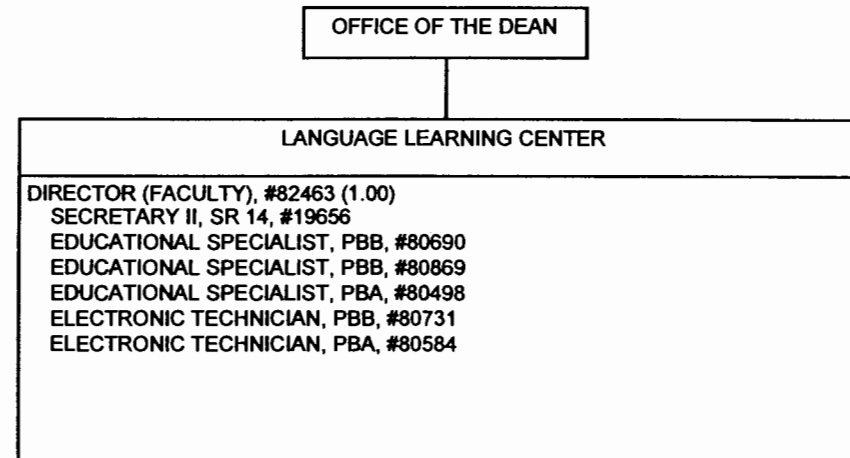
DATE:

JAD. Mealy
Interim Dean
June 29, 2005

CHART UPDATED
DATE JUL - 1 2005

STATE OF HAWAII
UNIVERSITY OF HAWAII AT MANOA
COLLEGE OF LANGUAGES, LINGUISTICS & LITERATURE
INSTRUCTIONAL DEPARTMENT

ORGANIZATIONAL CHART
CHART IX



General Funds 7.00

APPROVED:

TITLE:

DATE:

JAD Mealy
Interim Dean
June 29, 2005

CHART UPDATED

DATE JUL - 1 2005