

CHART UPDATED
JUL - 1 2005
DATE _____

UNIVERSITY OF HAWAII
UNIVERSITY OF HAWAII AT MANOA
COLLEGES OF ARTS AND SCIENCES
COLLEGE OF NATURAL SCIENCES
OFFICE OF THE DEAN

POSITION ORGANIZATION CHART
CHART II

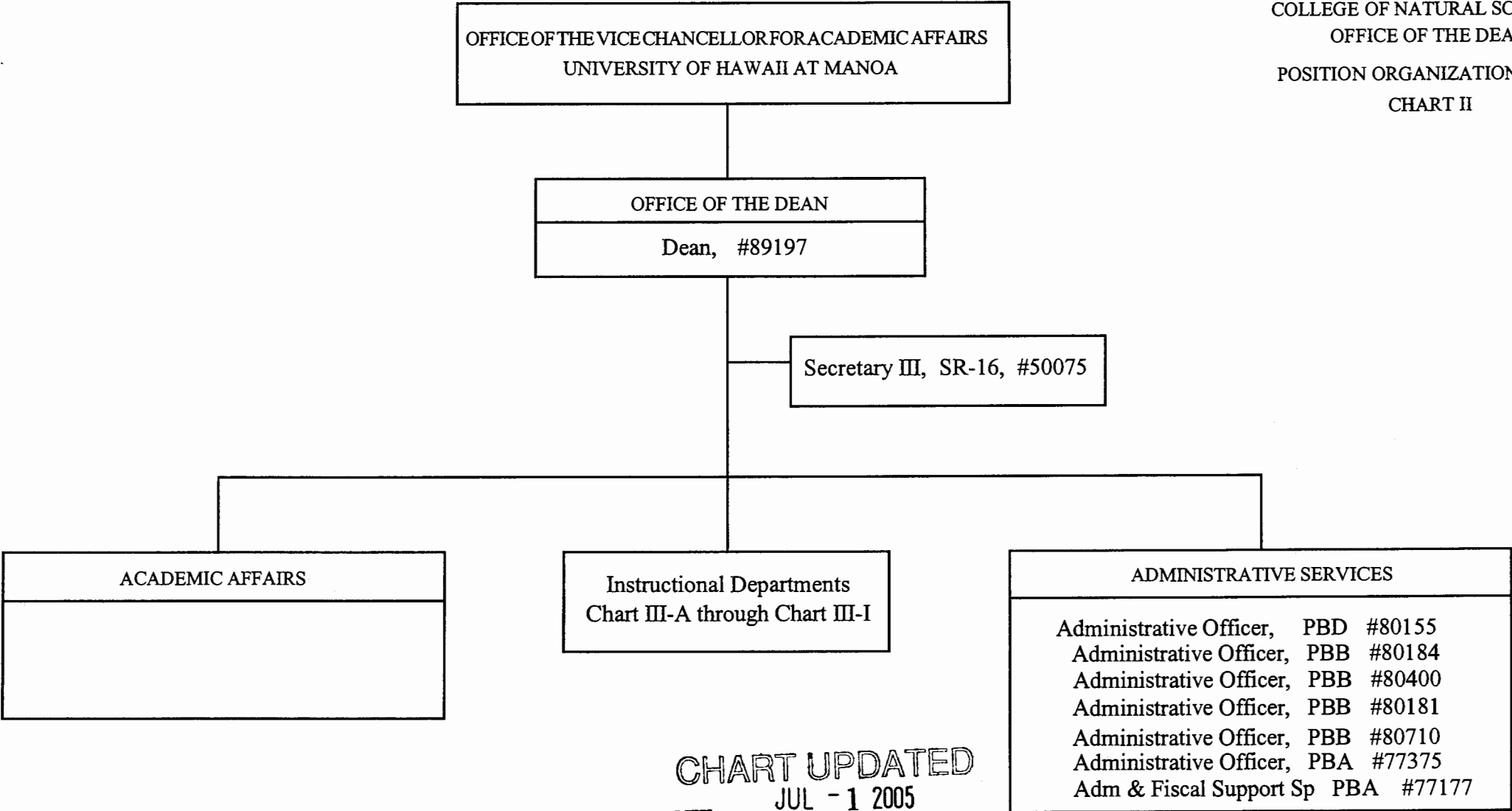
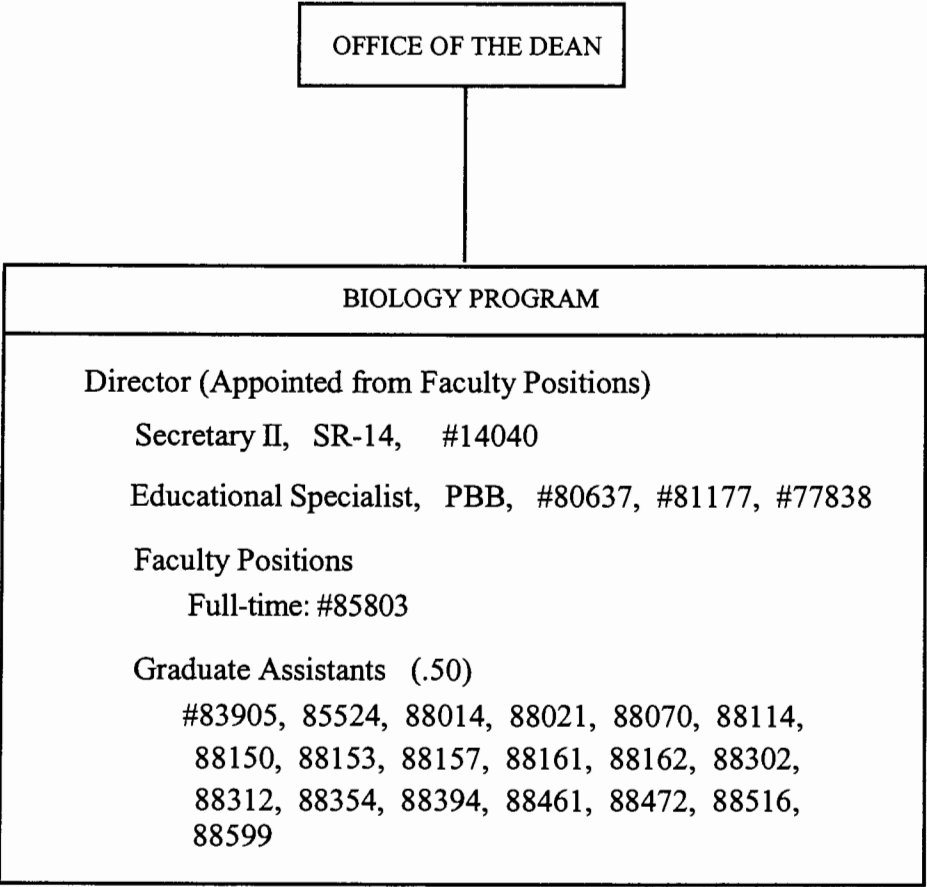


CHART UPDATED
JUL - 1 2005
DATE _____

UNIVERSITY OF HAWAII
UNIVERISTY OF HAWAII AT MANOA
COLLEGES OF ARTS AND SCIENCES
COLLEGE OF NATURAL SCIENCES

BIOLOGY PROGRAM
POSITION ORGANIZATION CHART
CHART III-A

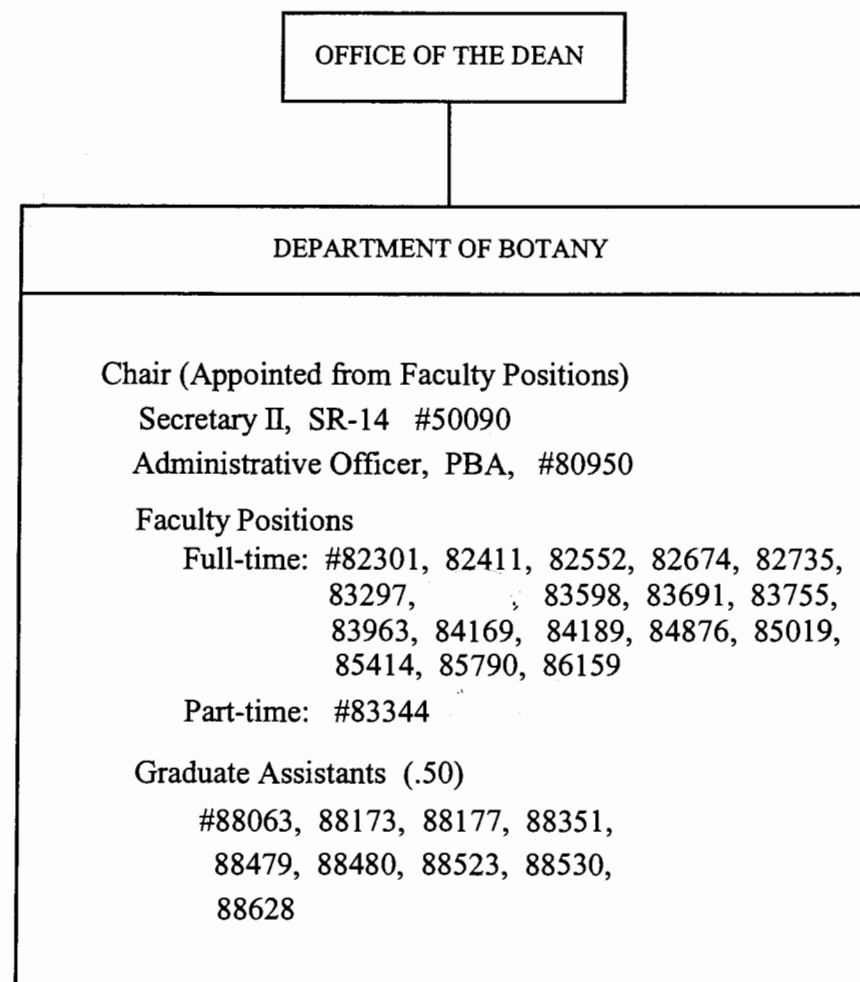


General Funds 14.50

CHART UPDATED
JUL - 1 2005

DATE _____

UNIVERSITY OF HAWAII
UNIVERSITY OF HAWAII AT MANOA
COLLEGES OF ARTS AND SCIENCES
COLLEGE OF NATURAL SCIENCES
DEPARTMENT OF BOTANY
POSITION ORGANIZATION CHART
CHART III-B

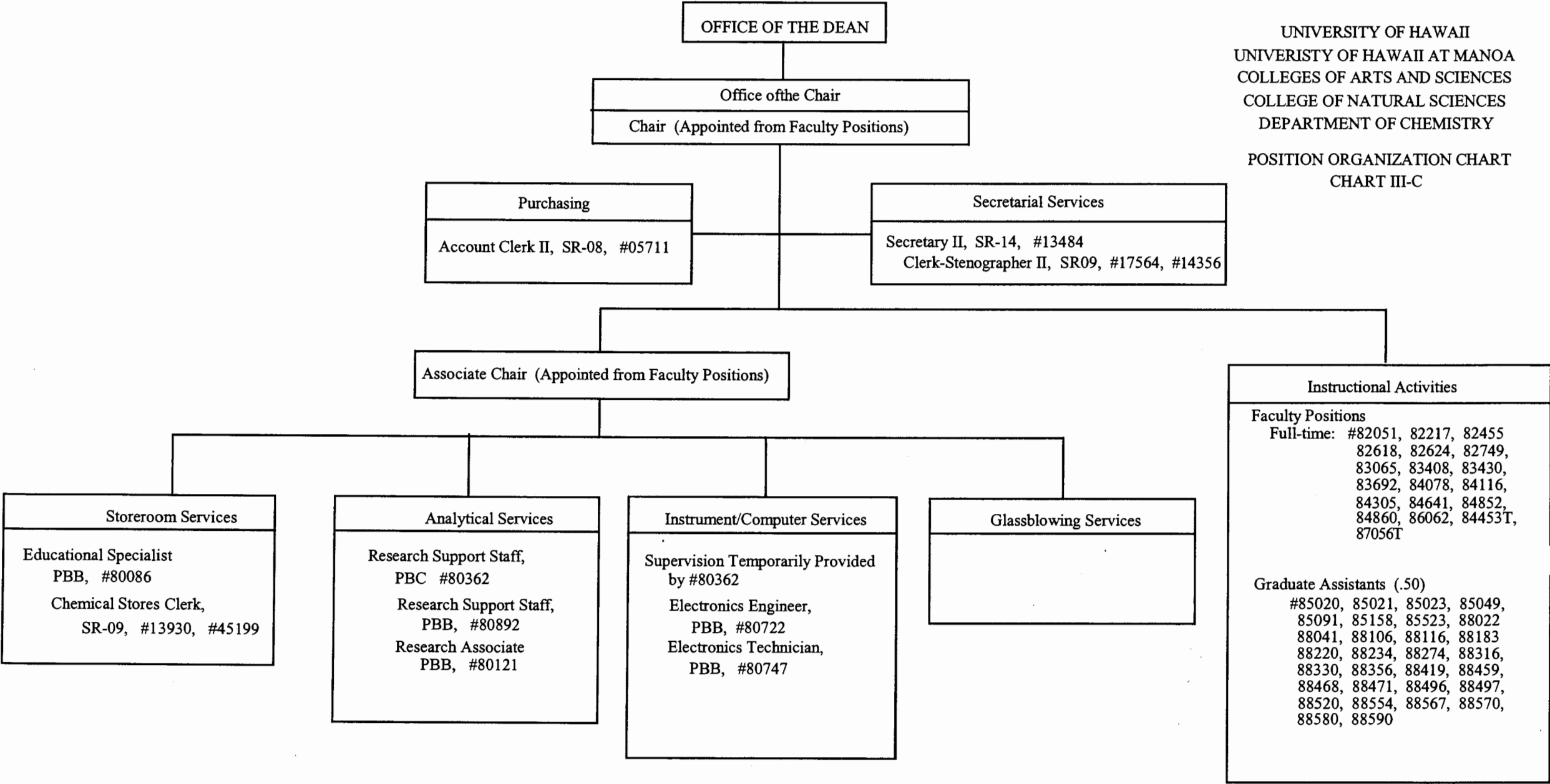


General Funds 25.00

CHART UPDATED
DATE JUL - 1 2005

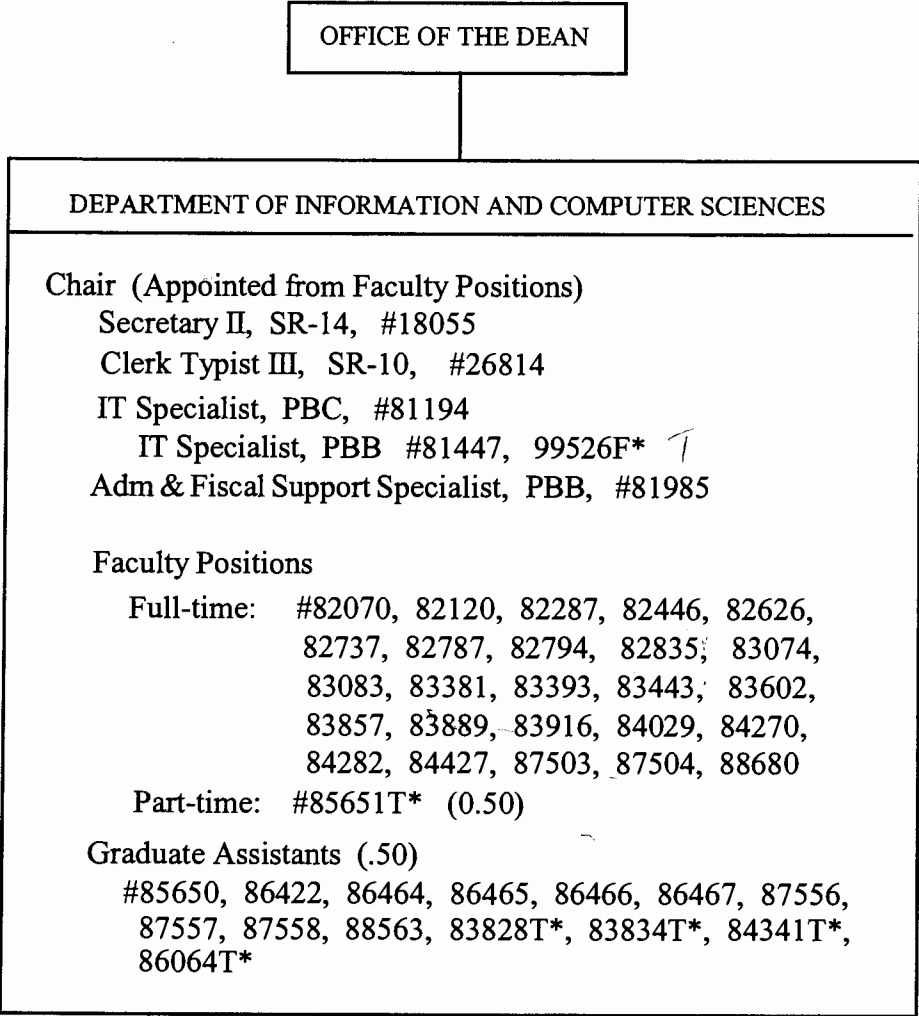
UNIVERSITY OF HAWAII
UNIVERISTY OF HAWAII AT MANOA
COLLEGES OF ARTS AND SCIENCES
COLLEGE OF NATURAL SCIENCES
DEPARTMENT OF CHEMISTRY

POSITION ORGANIZATION CHART
CHART III-C



*Appropriated Temporary Positions

UNIVERSITY OF HAWAII
UNIVERISTY OF HAWAII AT MANOA
COLLEGES OF ARTS AND SCIENCES
COLLEGE OF NATURAL SCIENCES
DEPARTMENT OF INFORMATION
AND COMPUTER SCIENCES
POSITION ORGANIZATION CHART
CHART III-D



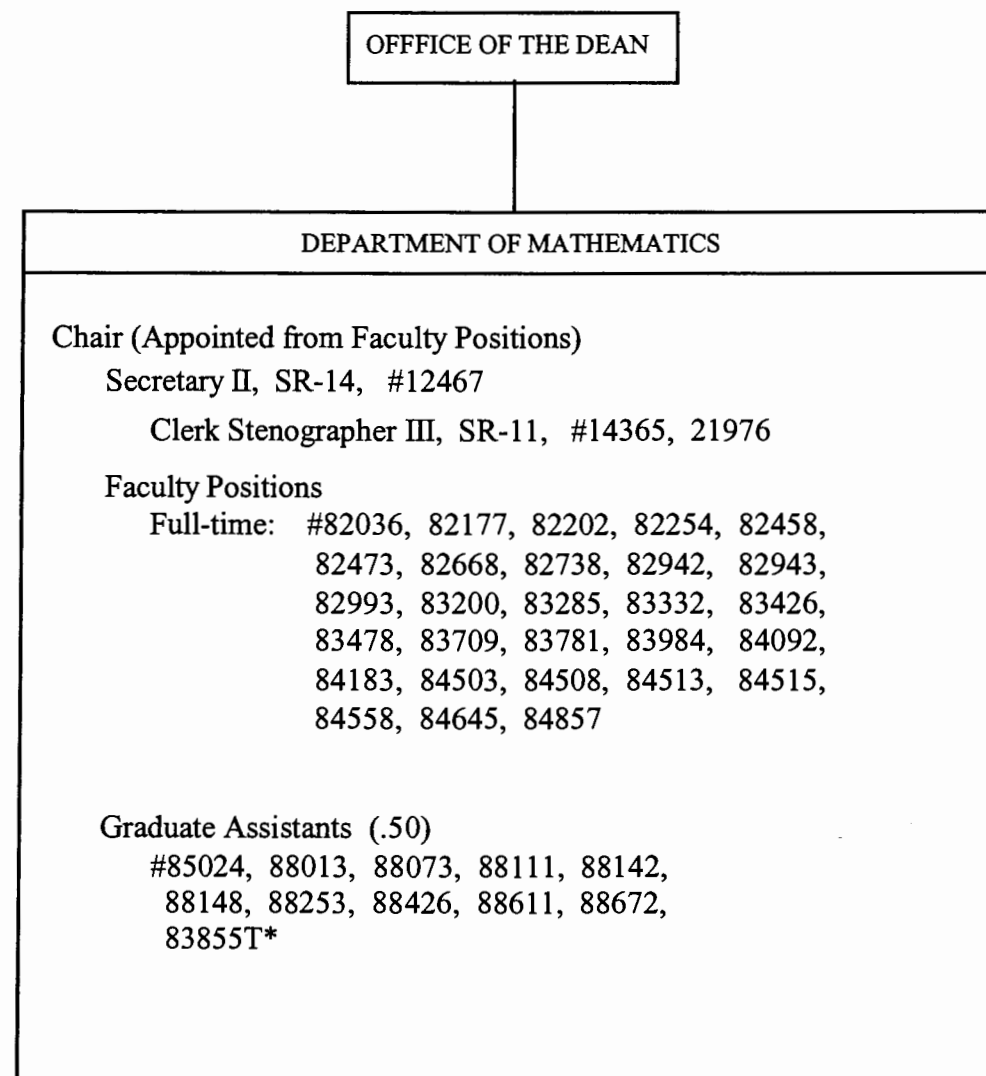
*Appropriated Temporary Positions

General Funds 38.50

CHART UPDATED
JUL - 1 2005
DATE _____

UNIVERSITY OF HAWAII
UNIVERSITY OF HAWAII AT MANOA
COLLEGES OF ARTS AND SCIENCES
COLLEGE OF NATURAL SCIENCES
DEPARTMENT OF MATHEMATICS

POSITION ORGANIZATION CHART
CHART III-E

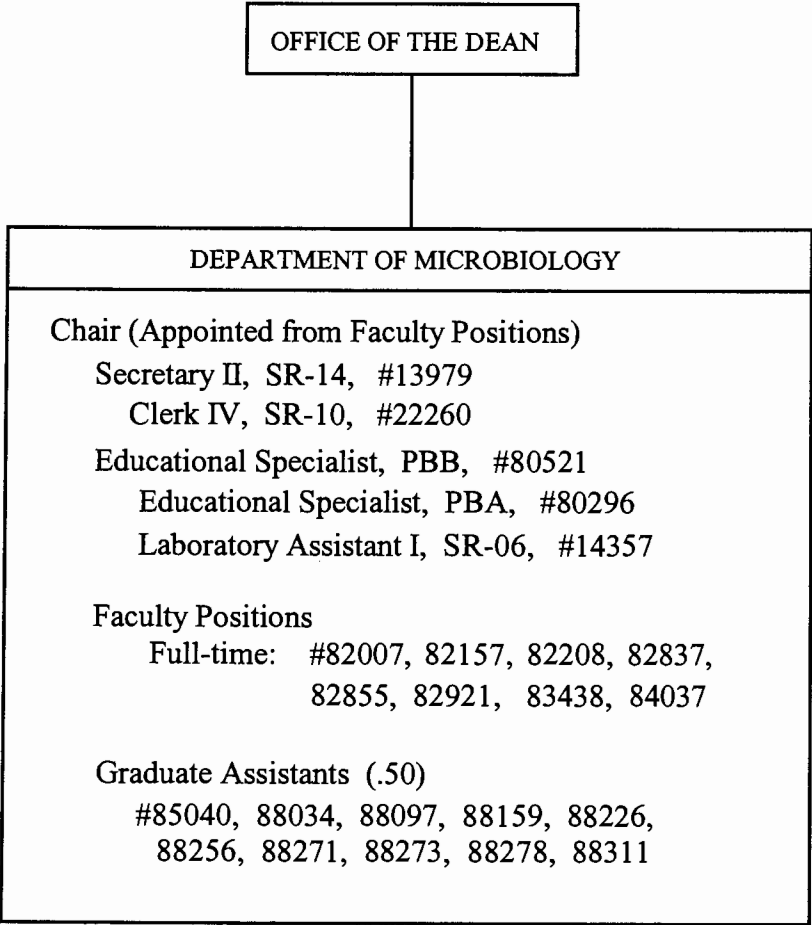


*Appropriated Temporary Positions

General Funds 36.50

CHART UPDATED
DATE JUL - 1 2005

UNIVERSITY OF HAWAII
UNIVERSITY OF HAWAII AT MANOA
COLLEGES OF ARTS AND SCIENCES
COLLEGE OF NATURAL SCIENCES
DEPARTMENT OF MICROBIOLOGY
POSITION ORGANIZATION CHART
CHART III-F



General Funds 18.00

CHART UPDATED

DATE JUL - 1 2005

UNIVERSITY OF HAWAII
UNIVERISTY OF HAWAII AT MANOA
COLLEGES OF ARTS AND SCIENCES
COLLEGE OF NATURAL SCIENCES

DEPARTMENT OF PHYSICS AND ASTRONOMY

POSITION ORGANIZATION CHART
CHART III-G

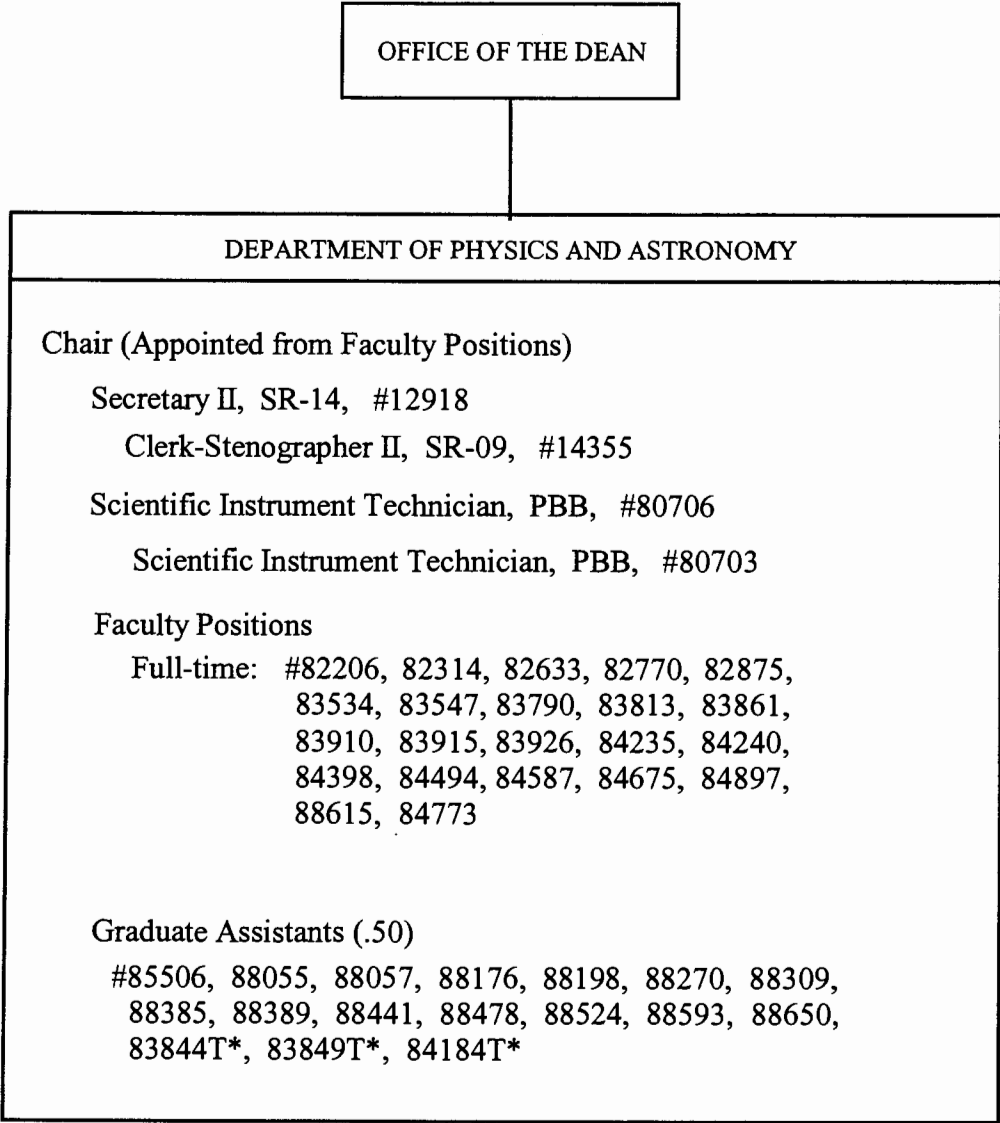


CHART UPDATED
DATE JUL - 1 2005

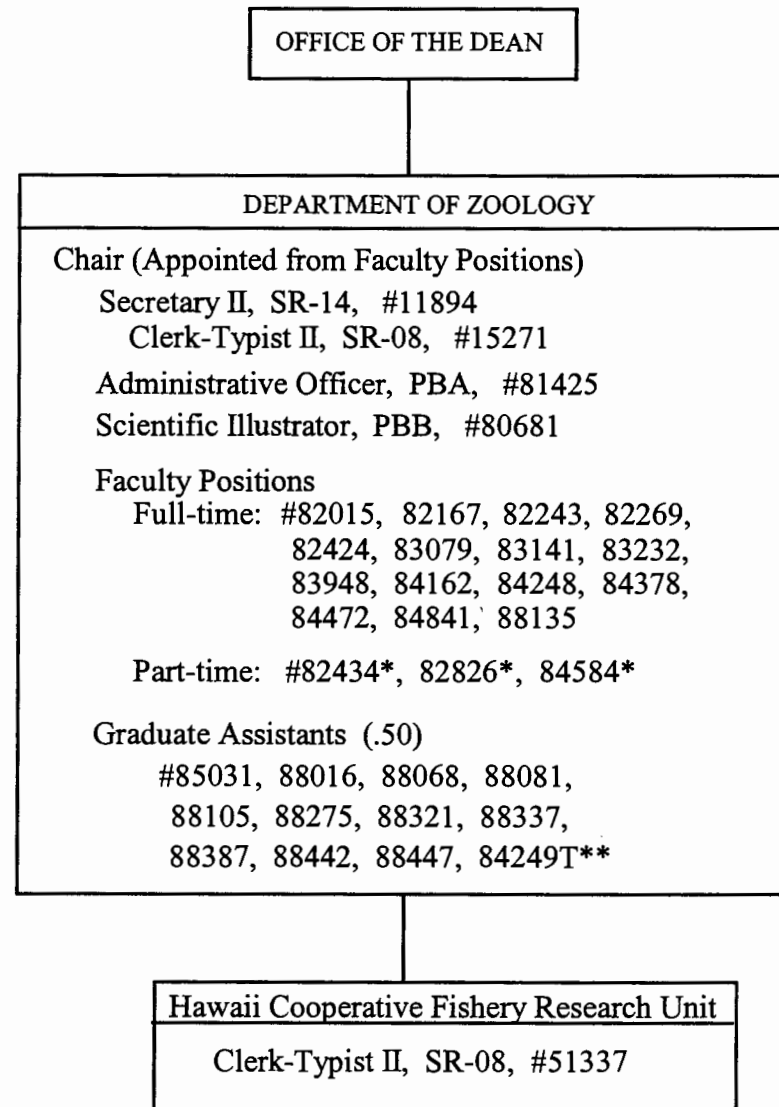
General Funds 34.50

*Appropriated Temporary Positions

UNIVERSITY OF HAWAII
UNIVERSITY OF HAWAII AT MANOA
COLLEGES OF ARTS AND SCIENCES
COLLEGE OF NATURAL SCIENCES

DEPARTMENT OF ZOOLOGY

POSITION ORGANIZATION CHART
CHART III-H



*Joint Appointments
**Appropriated Temporary Positions

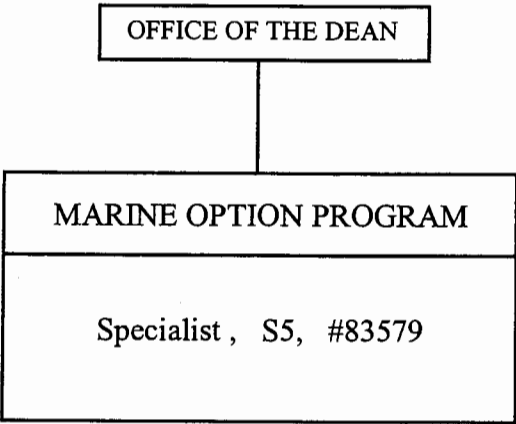
CHART UPDATED
DATE JUL - 1 2005

General Funds 27.50

UNIVERSITY OF HAWAII
UNIVERISTY OF HAWAII AT MANOA
COLLEGES OF ARTS AND SCIENCES
COLLEGE OF NATURAL SCIENCES

MARINE OPTION PROGRAM

POSITION ORGANIZATION CHART
CHART III-I



General Funds 1.00

CHART UPDATED
DATE JUL - 1 2005