

APPROVED:


for Klaus Keil, Interim Dean 07-01-2005

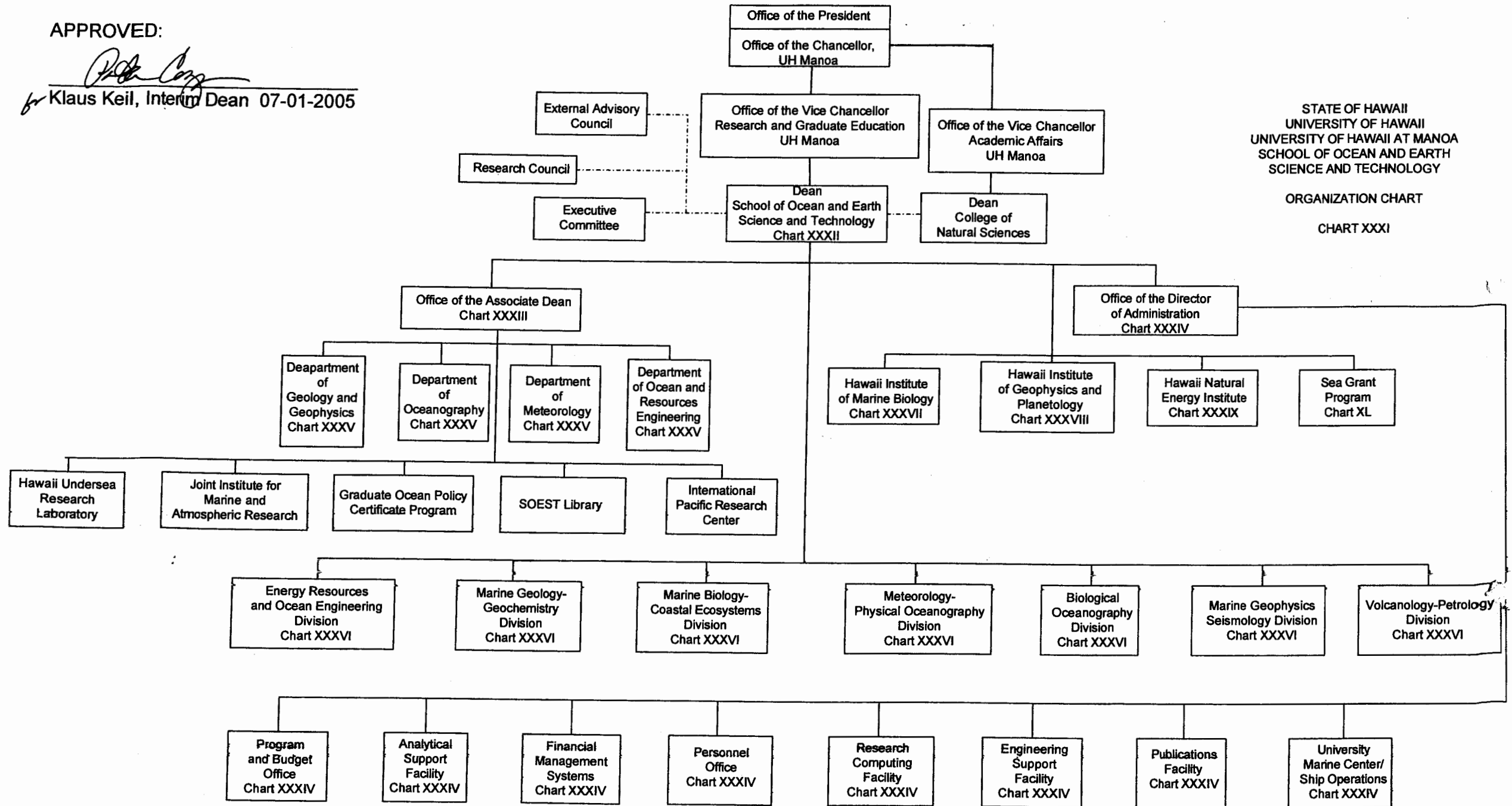
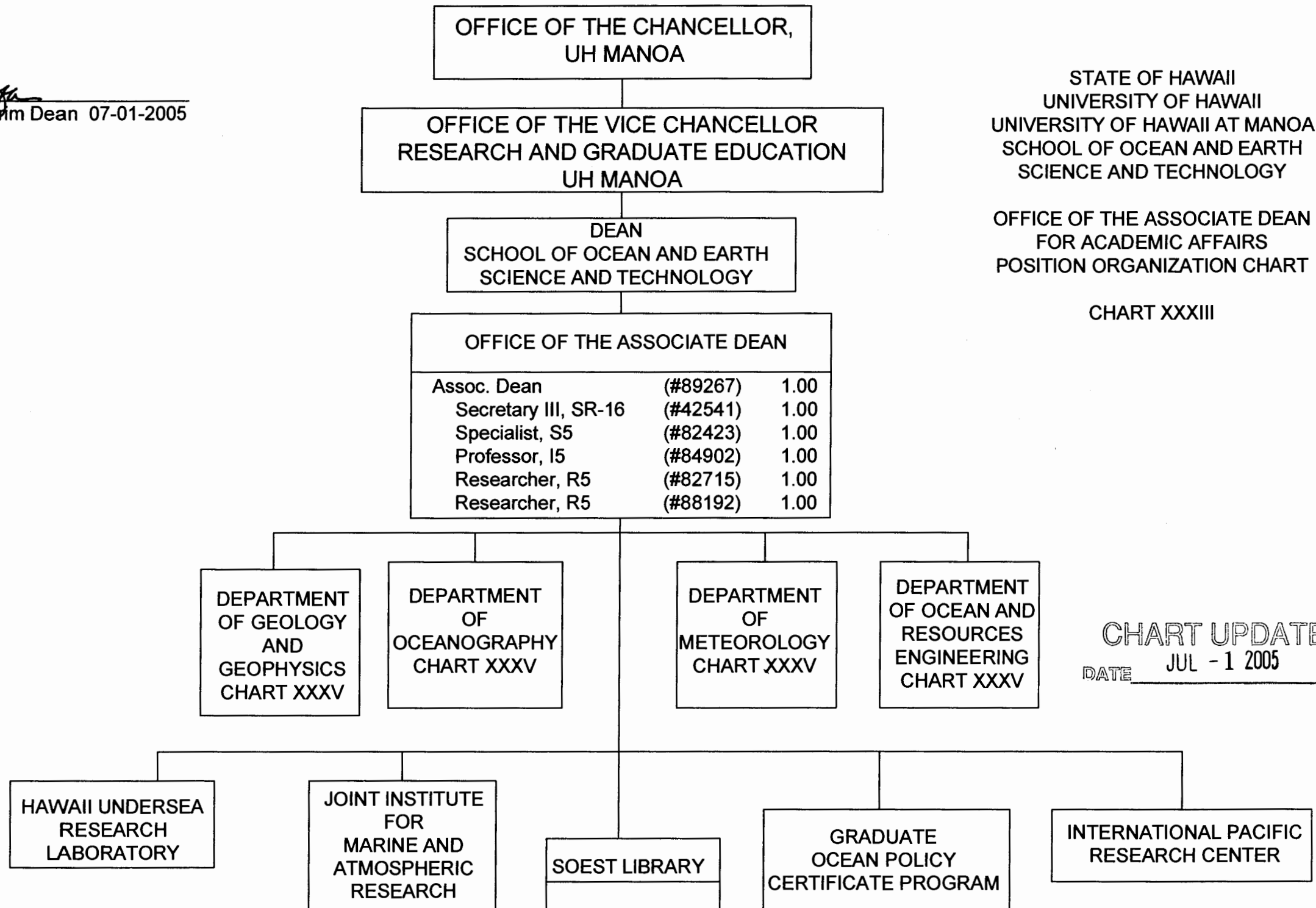


CHART UPDATED
DATE JUL - 1 2005

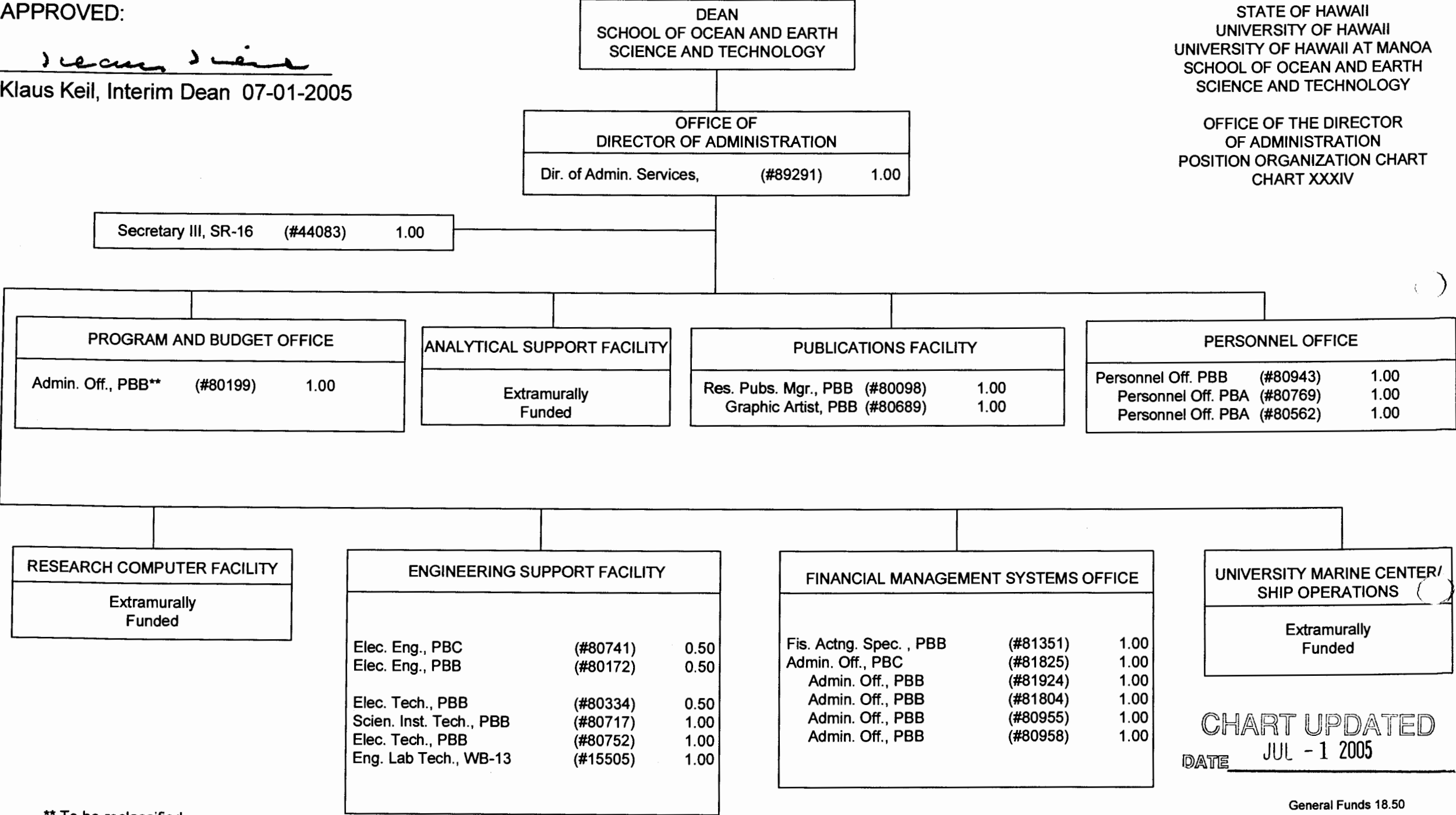
APPROVED:


for Klaus Keil, Interim Dean 07-01-2005



APPROVED:

Klaus Keil
Klaus Keil, Interim Dean 07-01-2005



** To be reclassified

APPROVED:


for Klaus Keil, Interim Dean 07-01-2005

STATE OF HAWAII
UNIVERSITY OF HAWAII
UNIVERSITY OF HAWAII AT MANOA
SCHOOL OF OCEAN AND EARTH
SCIENCE AND TECHNOLOGY

DEPARTMENTS
POSITION ORGANIZATION CHART
CHART XXXV

DEPARTMENT OF GEOLOGY AND GEOPHYSICS		
Chair*		
Faculty Positions (Joint Appt.):		11.00
[#82011 (0.25),		
82729 (0.50),		
84795 (0.50),		
85338 (0.50),		
85865 (0.50),		
85997 (0.50),		
86351 (0.50),		
86576 (0.50),		
88168 (0.50),		
88174 (0.50),		
82130 (1.00),		
83213 (0.50),		
84009 (0.50),		
85153 (0.50),		
85535 (0.50),		
85978 (0.50),		
86012 (0.50),		
86497 (0.50),		
86609 (0.50),		
88172 (0.50),		
85598 (0.50),		
84222 (0.25)]		
Graduate Assistants:		2.00
[#88075 (0.50),88137 (0.50),		
88443 (0.50),88594 (0.50)]		
		13.00

DEPARTMENT OF METEOROLOGY		
Chair*		
Secretary II, SR-14	(#14351)	1.00
Faculty Positions:		13.00
[#82008 (1.00),		
82077 (1.00),		
82368 (1.00),		
82491 (1.00),		
82709 (1.00),		
82712 (1.00),		
83700 (1.00),		
84107 (1.00),		
84300 (1.00),		
83721 (1.00),		
83070 (1.00),		
83735 (1.00)		
84451 (1.00)]		
Graduate Assistants:		1.00
[#85028 (0.50),		
88339 (0.50)]		
		15.00

DEPARTMENT OF OCEANOGRAPHY		
Chair*		
Secretary II, SR-14	(#13891)	1.00
Faculty Positions (Joint Appt.):		18.30
[#82059 (0.50),		
82291 (0.50),		
82726 (0.50),		
82961 (0.50),		
83355 (0.25),		
83499 (0.75),		
85314 (0.80),		
85992 (0.50),		
86498 (0.50),		
88163 (0.50),		
82073 (1.00),		
88386 (1.00),		
88393 (1.00),		
84287 (1.00),		
84222 (0.25),		
84890 (1.00)]		
82807 (0.50),		
83295 (0.50),		
83482 (0.50),		
84601 (1.00),		
85339 (0.50),		
84673 (0.50),		
84826 (0.50),		
85920 (0.50),		
86000 (0.50),		
88156 (0.50)		
88167 (0.25),		
83921 (1.00),		
82259 (0.50),		
82696 (0.50),		
Graduate Assistants:		2.50
[#84941 (0.50),		
88119 (0.50),		
88160 (0.50),		
88569 (0.50),		
87111 (0.50)]		
		21.80

DEPARTMENT OF OCEAN AND RESOURCES ENGINEERING		
Chair*		
Secretary II, SR-14	(#18083)	1.00
Faculty Positions:		4.25
[#83802 (1.00),		
84118 (1.00),		
88488 (0.25),		
83376 (1.00),		
84447 (1.00)]		
Graduate Assistants:		0.50
[#88382 (0.50)]		
		5.75

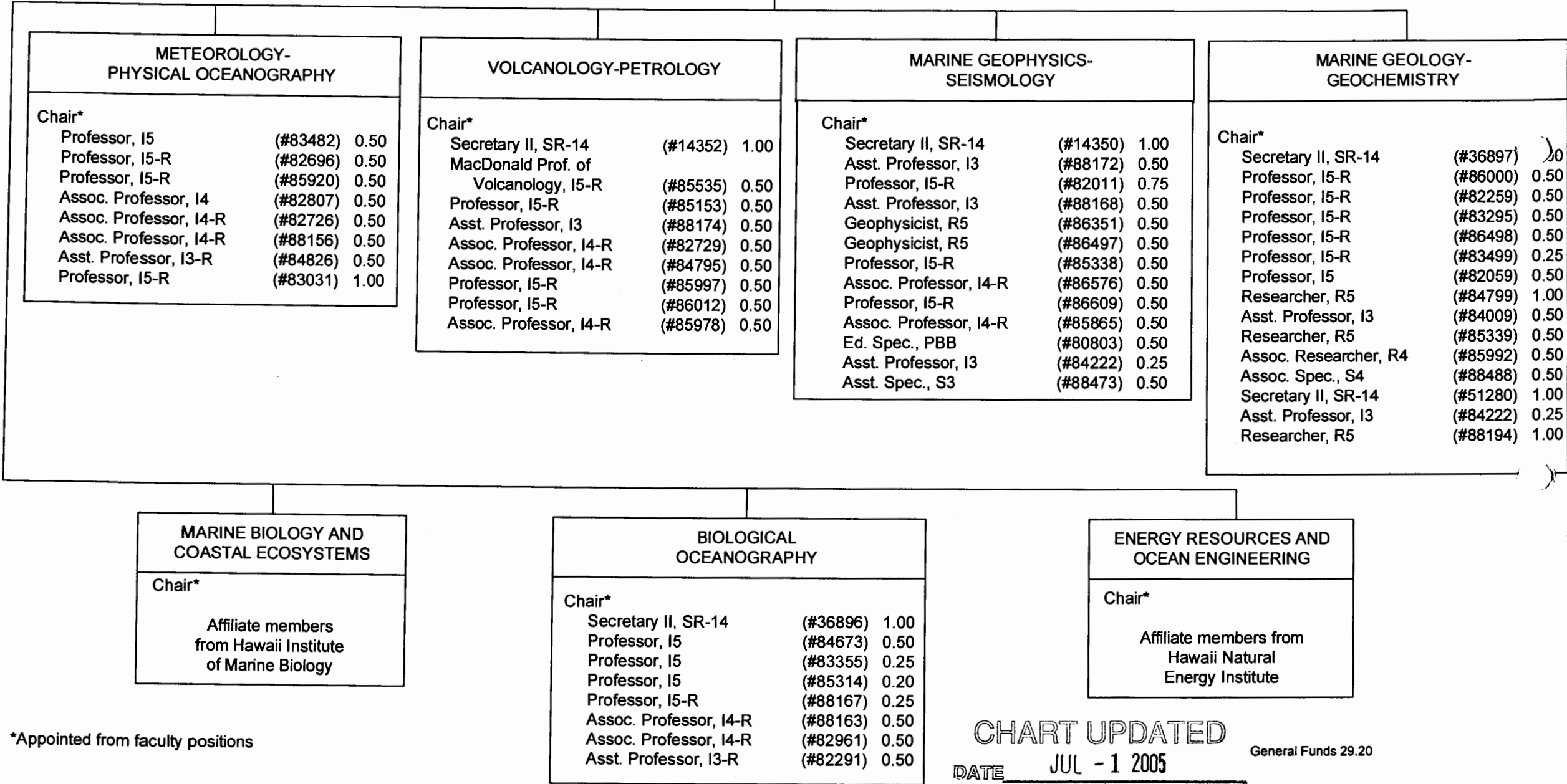
CHART UPDATED
JUL - 1 2005
DATE _____
General Funds 55.55

APPROVED:

Klaus Keil
Klaus Keil, Interim Dean 07-01-2005

STATE OF HAWAII
UNIVERSITY OF HAWAII
UNIVERSITY OF HAWAII AT MANOA
SCHOOL OF OCEAN AND EARTH
SCIENCE AND TECHNOLOGY
RESEARCH DIVISIONS
POSITION ORGANIZATION CHART
CHART XXXVI

DEAN
SCHOOL OF OCEAN AND EARTH
SCIENCE AND TECHNOLOGY



*Appointed from faculty positions

CHART UPDATED
DATE JUL - 1 2005

General Funds 29.20

STATE OF HAWAII
UNIVERSITY OF HAWAII
UNIVERSITY OF HAWAII AT MANOA
SCHOOL OF OCEAN AND EARTH
SCIENCE AND TECHNOLOGY

HAWAII INSTITUTE OF MARINE BIOLOGY
POSITION ORGANIZATION CHART

CHART XXXVII

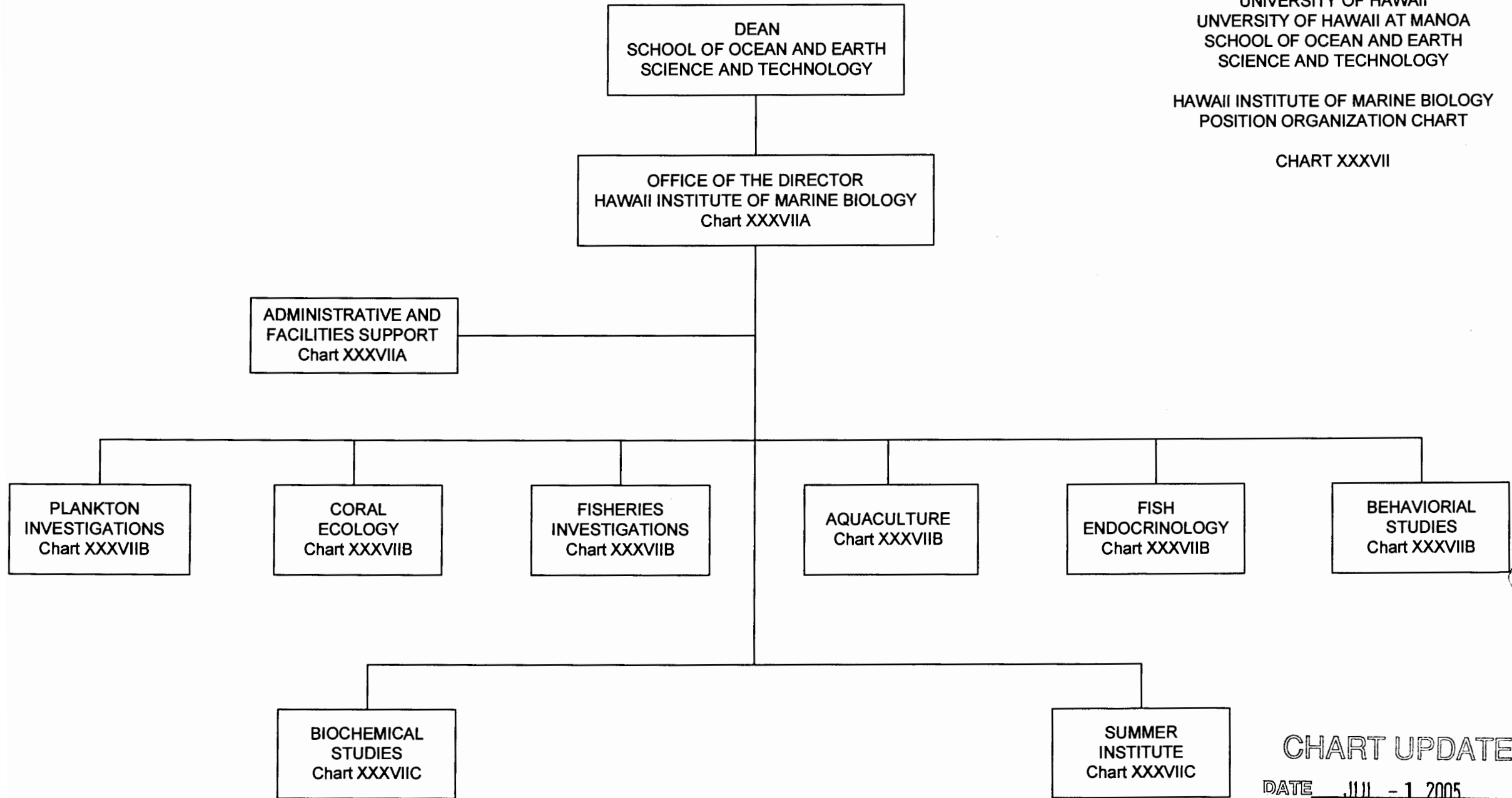


CHART UPDATED

DATE JUL - 1 2005

APPROVED:

Klaus Keil
Klaus Keil, Interim Dean 07-01-2005

STATE OF HAWAII
UNIVERSITY OF HAWAII
UNIVERSITY OF HAWAII AT MANOA
SCHOOL OF OCEAN AND EARTH
SCIENCE AND TECHNOLOGY
HAWAII INSTITUTE OF MARINE BIOLOGY
POSITION ORGANIZATION CHART
CHART XXXVIIA

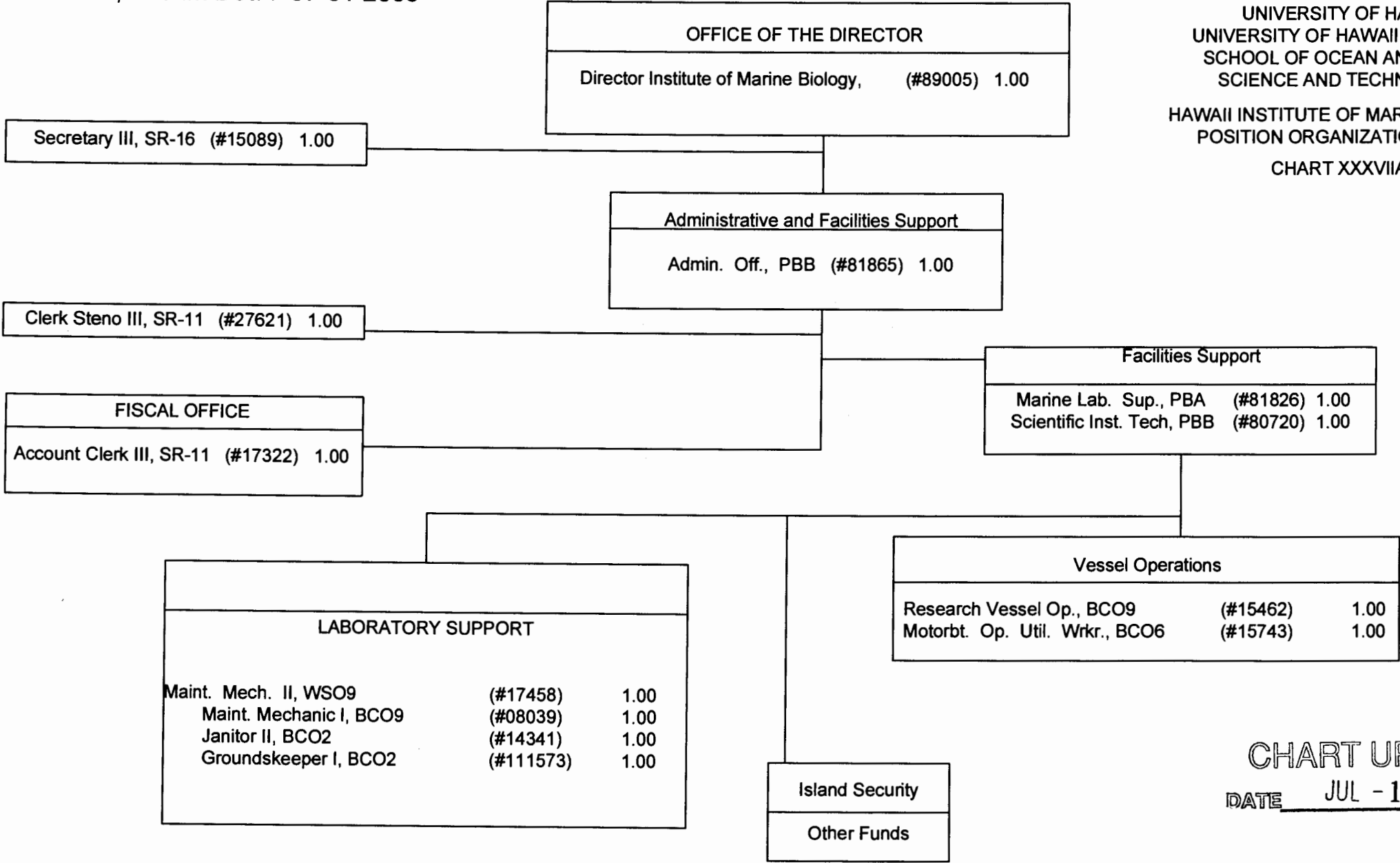


CHART UPDATED
DATE JUL - 1 2005

General Funds 13.00

APPROVED:

Klaus Keil
Klaus Keil, Interim Dean 07-01-2005

STATE OF HAWAII
UNIVERSITY OF HAWAII
UNIVERSITY OF HAWAII AT MANOA
SCHOOL OF OCEAN AND EARTH
SCIENCE AND TECHNOLOGY
HAWAII INSTITUTE OF MARINE BIOLOGY
POSITION ORGANIZATION CHART
CHART XXXVIIB

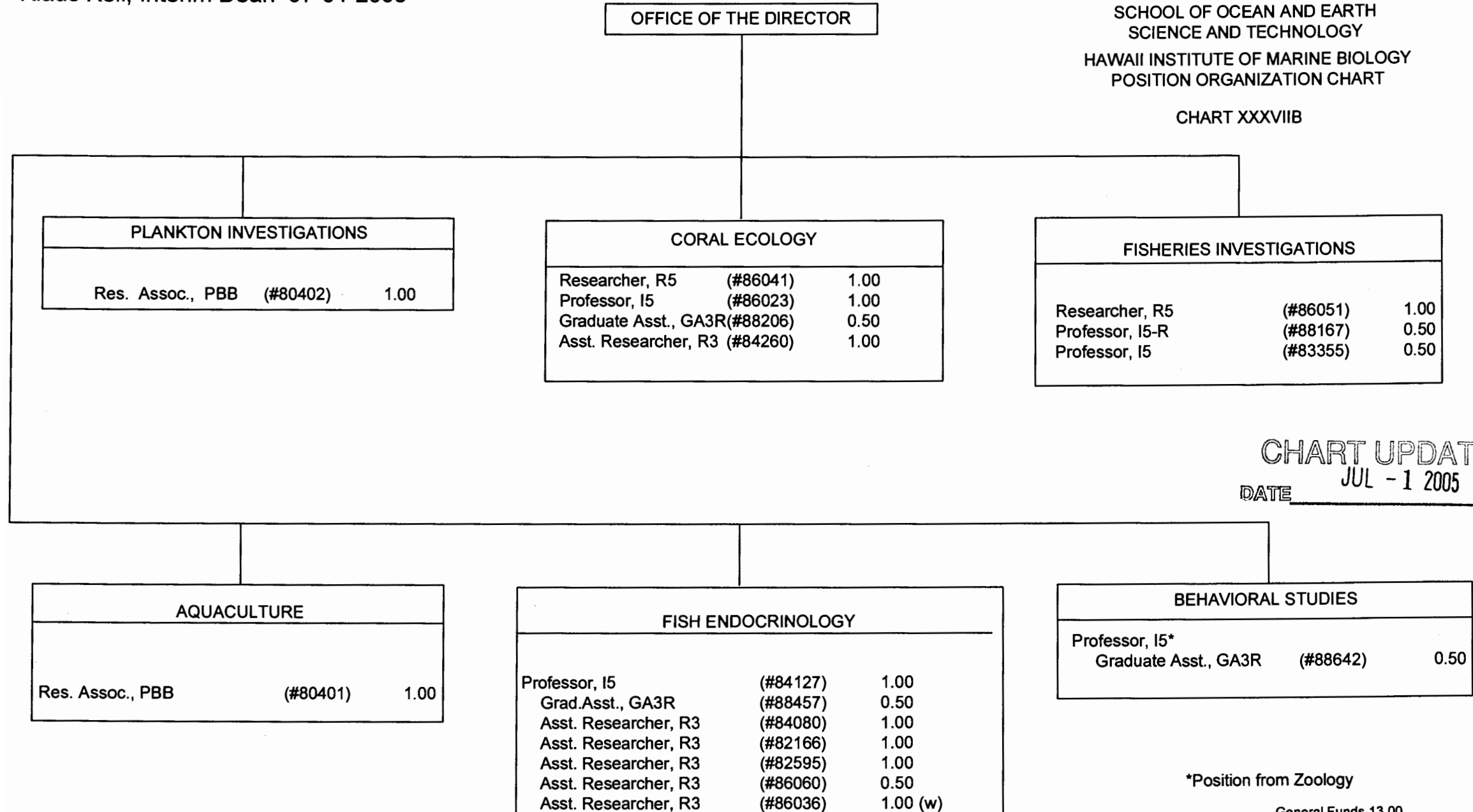


CHART UPDATED
JUL - 1 2005
DATE

*Position from Zoology

General Funds 13.00
(w) Revolving Funds 1.00

APPROVED:

Klaus Keil
Klaus Keil, Interim Dean 07-01-2005

STATE OF HAWAII
UNIVERSITY OF HAWAII
UNIVERSITY OF HAWAII AT MANOA
SCHOOL OF OCEAN AND EARTH
SCIENCE AND TECHNOLOGY

HAWAII INSTITUTE OF MARINE BIOLOGY
POSITION ORGANIZATION CHART

CHART XXXVIIC

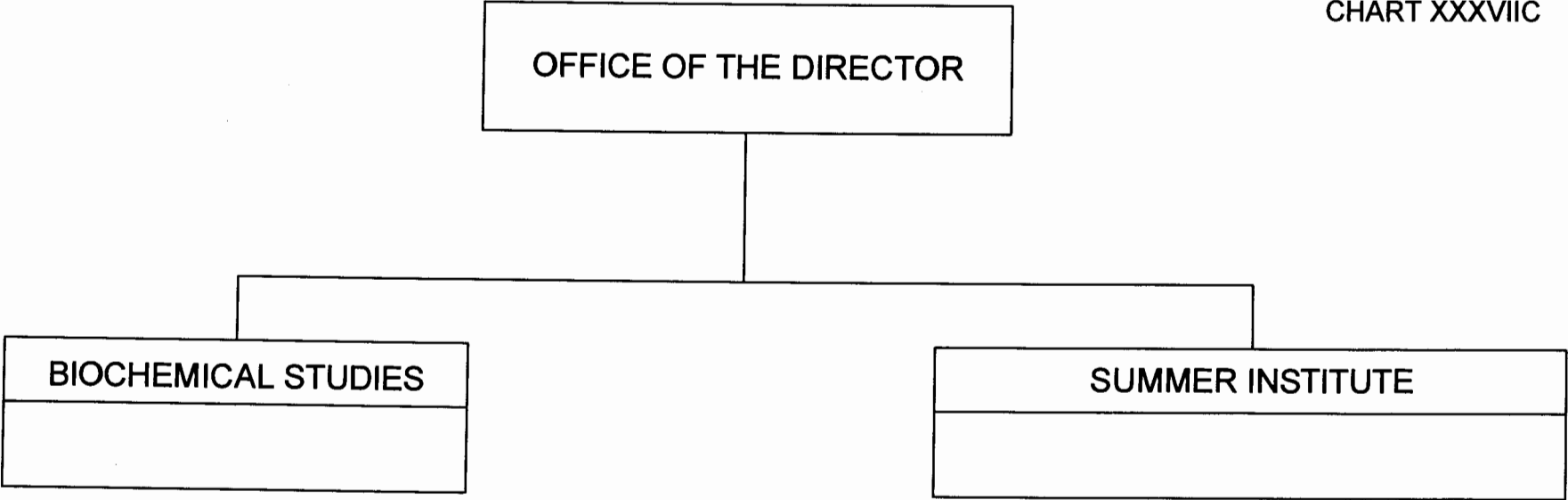


CHART UPDATED

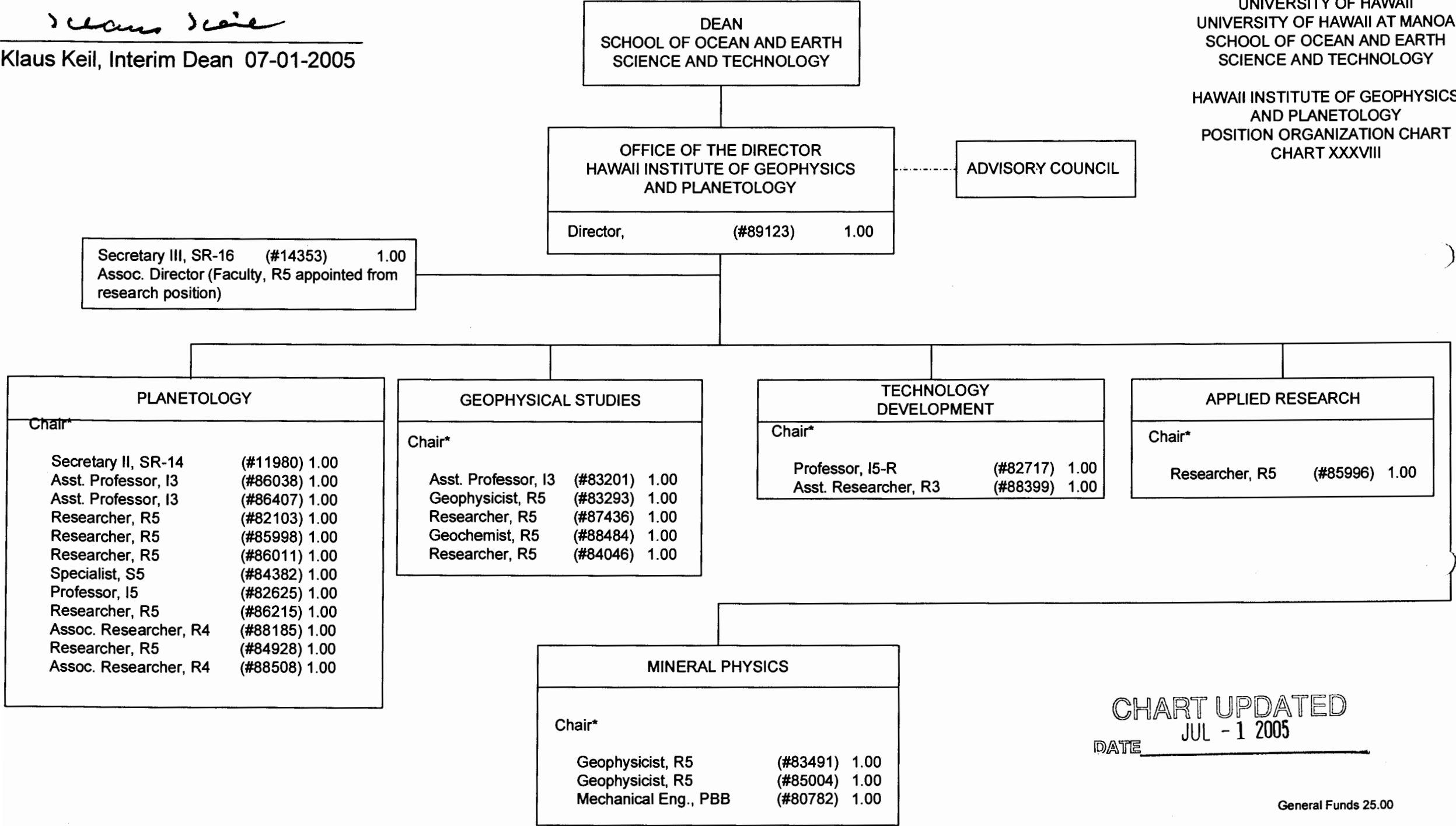
DATE JUL - 1 2005

APPROVED:

Klaus Keil
Klaus Keil, Interim Dean 07-01-2005

STATE OF HAWAII
UNIVERSITY OF HAWAII
UNIVERSITY OF HAWAII AT MANOA
SCHOOL OF OCEAN AND EARTH
SCIENCE AND TECHNOLOGY

HAWAII INSTITUTE OF GEOPHYSICS
AND PLANETOLOGY
POSITION ORGANIZATION CHART
CHART XXXVIII



STATE OF HAWAII
UNIVERSITY OF HAWAII
UNIVERSITY OF HAWAII AT MANOA
SCHOOL OF OCEAN AND EARTH SCIENCE AND TECHNOLOGY
HAWAII NATURAL ENERGY INSTITUTE

POSTIION ORGANIZATION CHART

CHART XXXIX

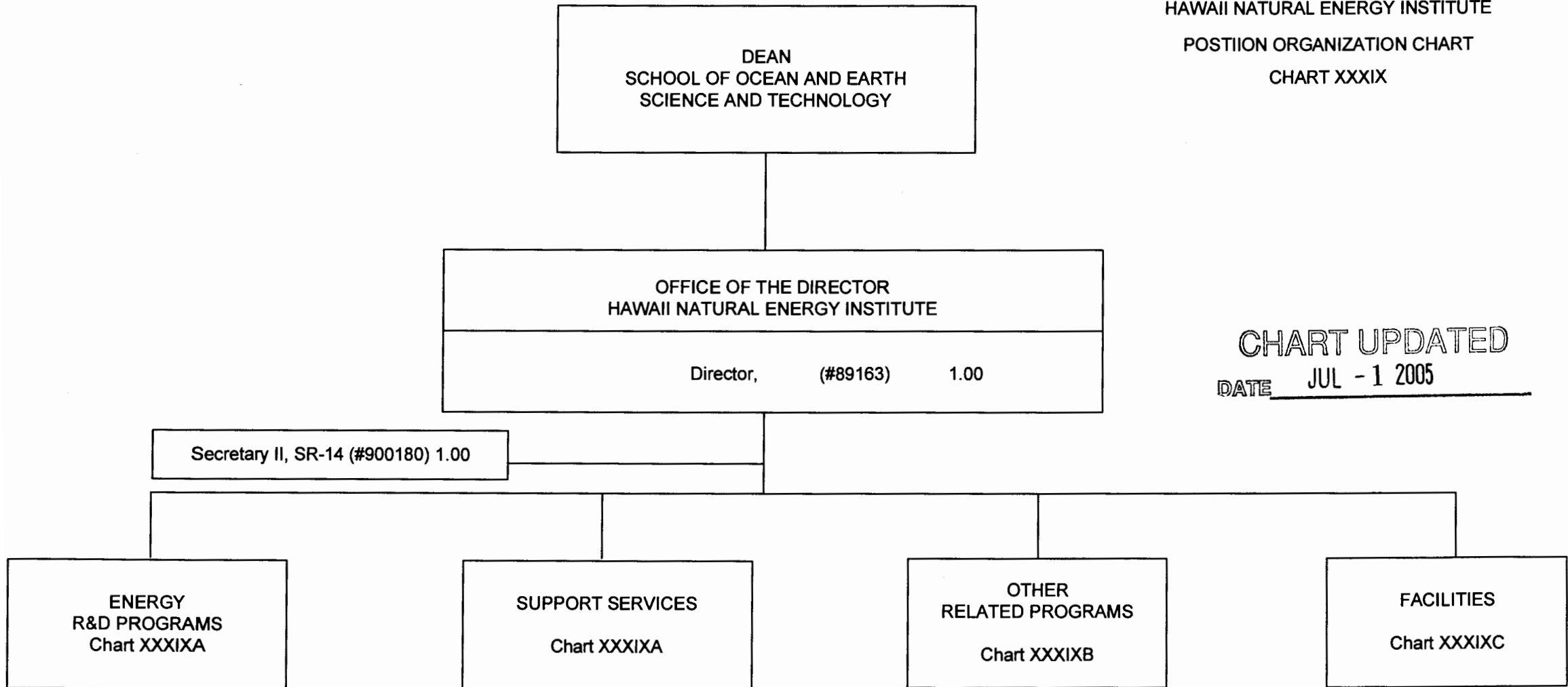


CHART UPDATED
DATE JUL - 1 2005

APPROVED:

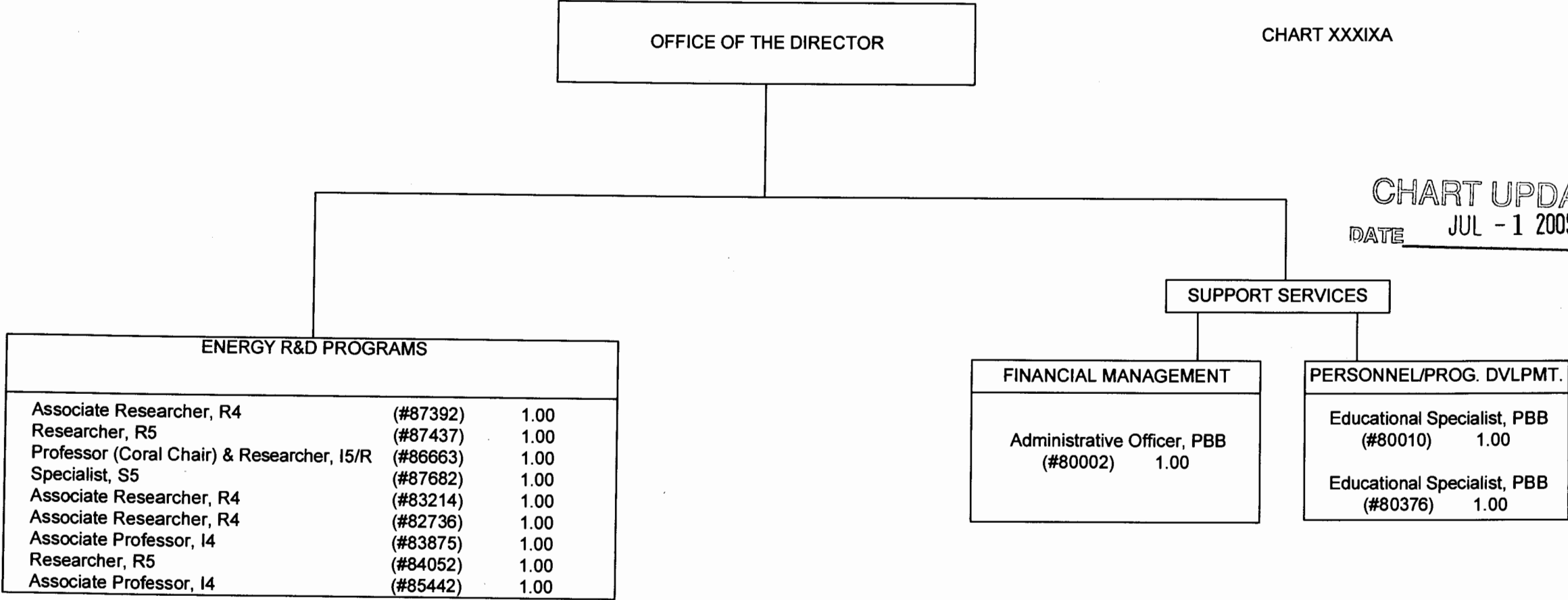
Klaus Keil
Klaus Keil, Interim Dean 07-01-2005

STATE OF HAWAII
UNIVERSITY OF HAWAII
UNIVERSITY OF HAWAII AT MANOA
SCHOOL OF OCEAN AND EARTH SCIENCE AND TECHNOLOGY
HAWAII NATURAL ENERGY INSTITUTE

POSITION ORGANIZATION CHART

CHART XXXIXA

CHART UPDATED
DATE JUL - 1 2005



APPROVED:

Klaus Keil
Klaus Keil, Interim Dean 07-01-2005

STATE OF HAWAII
UNIVERSITY OF HAWAII
UNIVERSITY OF HAWAII AT MANOA
SCHOOL OF OCEAN AND EARTH SCIENCE AND TECHNOLOGY
HAWAII NATURAL ENERGY INSTITUTE

POSITION ORGANIZATION CHART

CHART XXXIXB

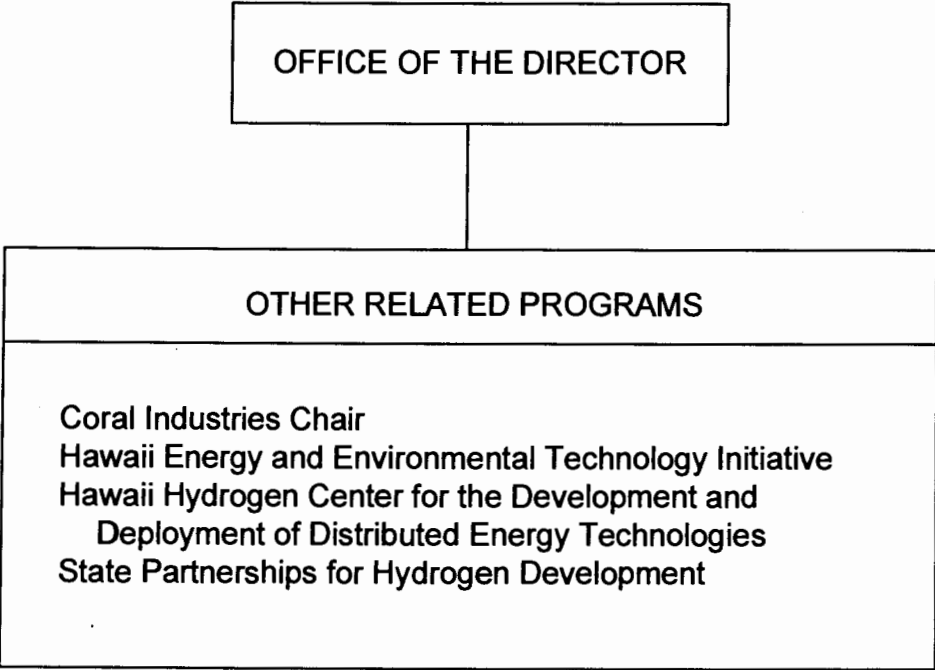


CHART UPDATED
DATE JUL - 1 2005

APPROVED:

Klaus Keil
Klaus Keil, Interim Dean 07-01-2005

STATE OF HAWAII
UNIVERSITY OF HAWAII
UNIVERSITY OF HAWAII AT MANOA
SCHOOL OF OCEAN AND EARTH SCIENCE AND TECHNOLOGY
HAWAII NATURAL ENERGY INSTITUTE

POSITION ORGANIZATION CHART

CHART XXXIXC

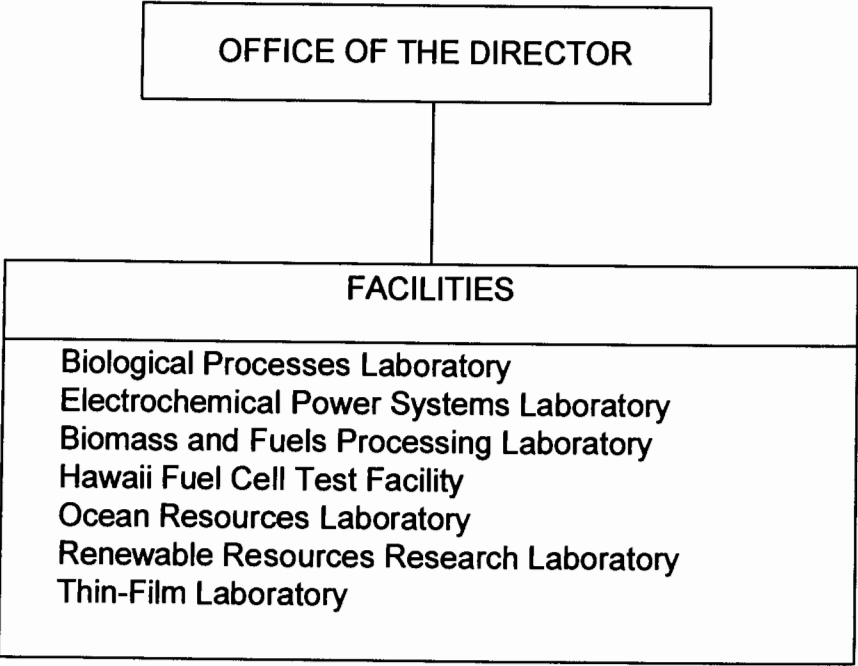


CHART UPDATED

DATE JUL - 1 2005

STATE OF HAWAII
UNIVERSITY OF HAWAII
UNIVERSITY OF HAWAII AT MANOA
SCHOOL OF OCEAN AND EARTH
SCIENCE AND TECHNOLOGY

SEA GRANT COLLEGE PROGRAM
ORGANIZATION CHART

CHART XL

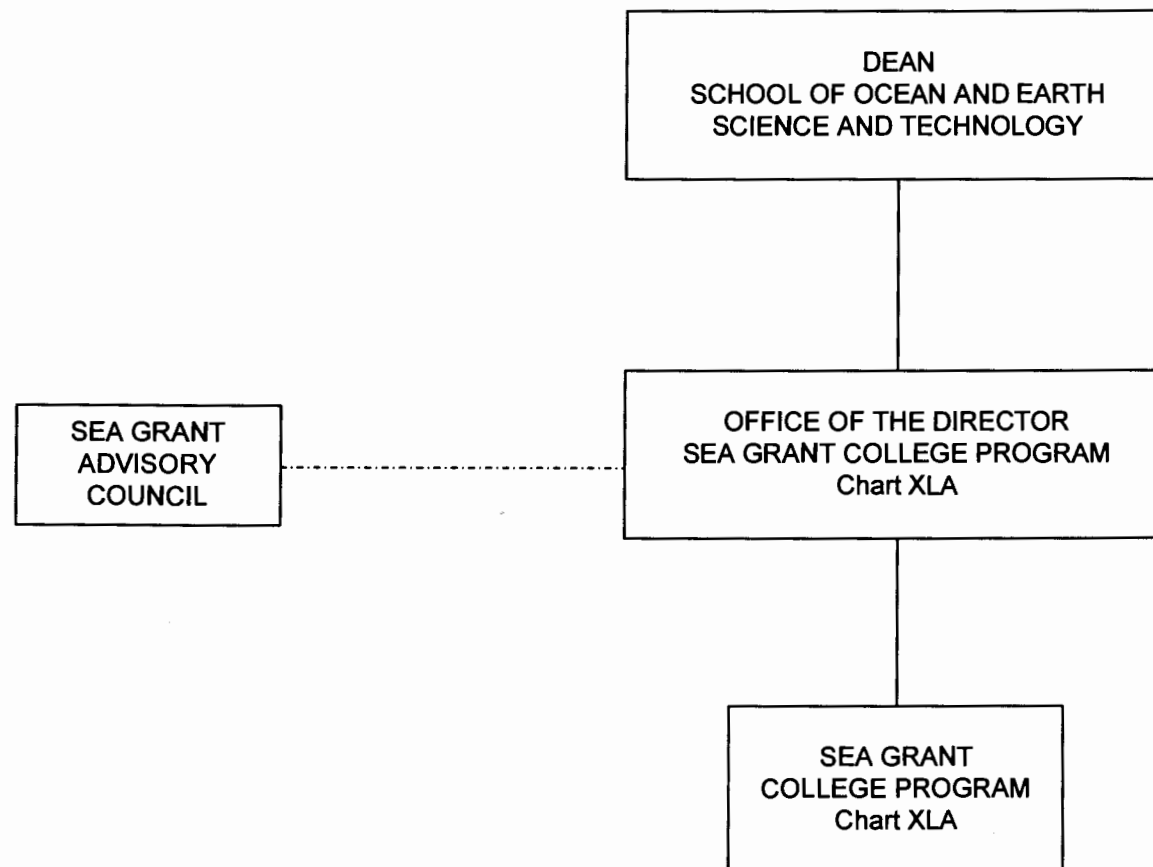


CHART UPDATED
JUL - 1 2005
DATE _____

STATE OF HAWAII
UNIVERSITY OF HAWAII
UNIVERSITY OF HAWAII AT MANOA
SCHOOL OF OCEAN AND EARTH
SCIENCE AND TECHNOLOGY

SEA GRANT COLLEGE PROGRAM
ORGANIZATION CHART

CHART XLA

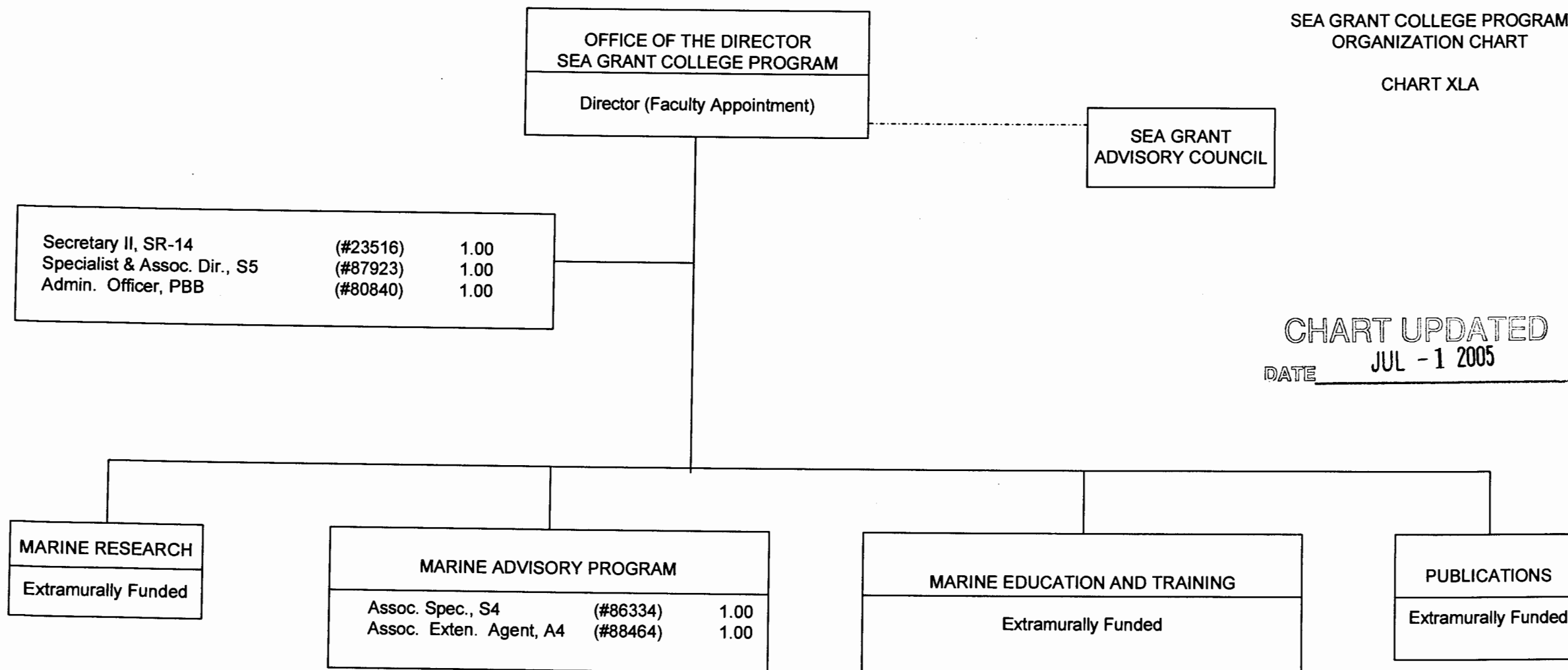


CHART UPDATED
DATE JUL -1 2005