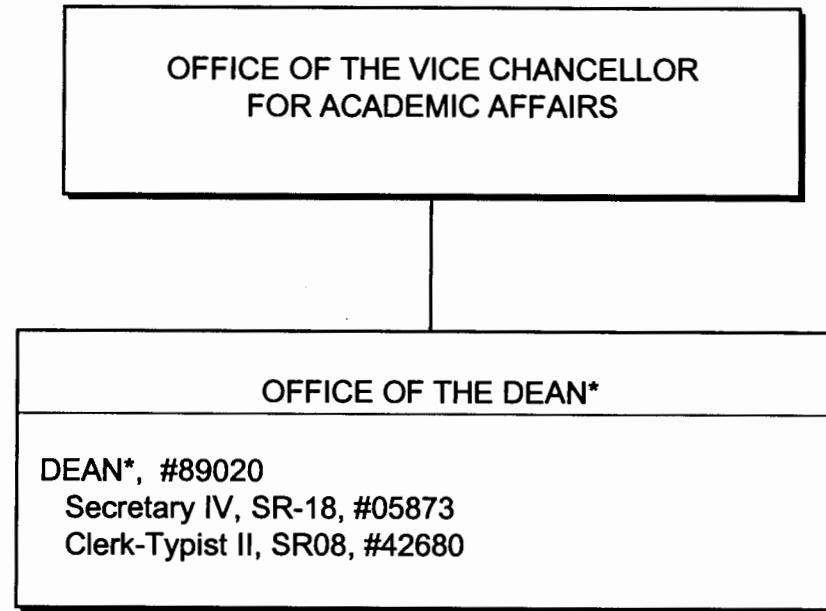


STATE OF HAWAII  
UNIVERSITY OF HAWAII  
UNIVERSITY OF HAWAII AT MANOA  
COLLEGE OF TROPICAL AGRICULTURE AND HUMAN  
RESOURCES

OFFICE OF THE DEAN  
POSITION ORGANIZATION CHART: XLI-A



\* & Director of Research and Cooperative Extension

CHART UPDATED  
DATE JUL - 1 2005

STATE OF HAWAII  
UNIVERSITY OF HAWAII  
UNIVERSITY OF HAWAII AT MANOA  
COLLEGE OF TROPICAL AGRICULTURE AND HUMAN RESOURCES

OFFICE OF PUBLICATIONS AND INFORMATION  
POSITION ORGANIZATION CHART: XLI-B

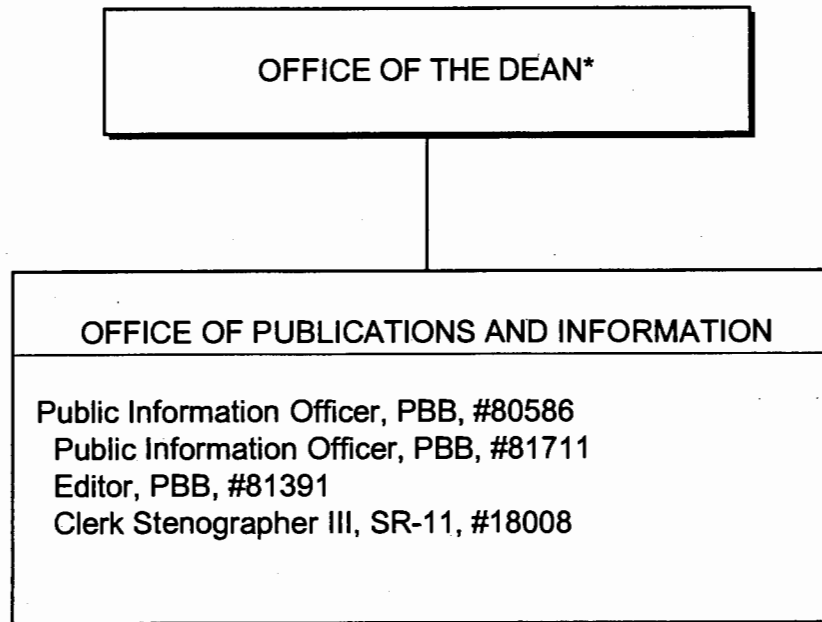


CHART UPDATED  
JUL - 1 2005  
DATE \_\_\_\_\_

\*& Director of Research and Cooperative Extension

STATE OF HAWAII  
UNIVERSITY OF HAWAII  
UNIVERSITY OF HAWAII AT MANOA  
COLLEGE OF TROPICAL AGRICULTURE AND HUMAN RESOURCES

OFFICE OF ADMINISTRATIVE SERVICES  
POSITION ORGANIZATION CHART: XLI-C

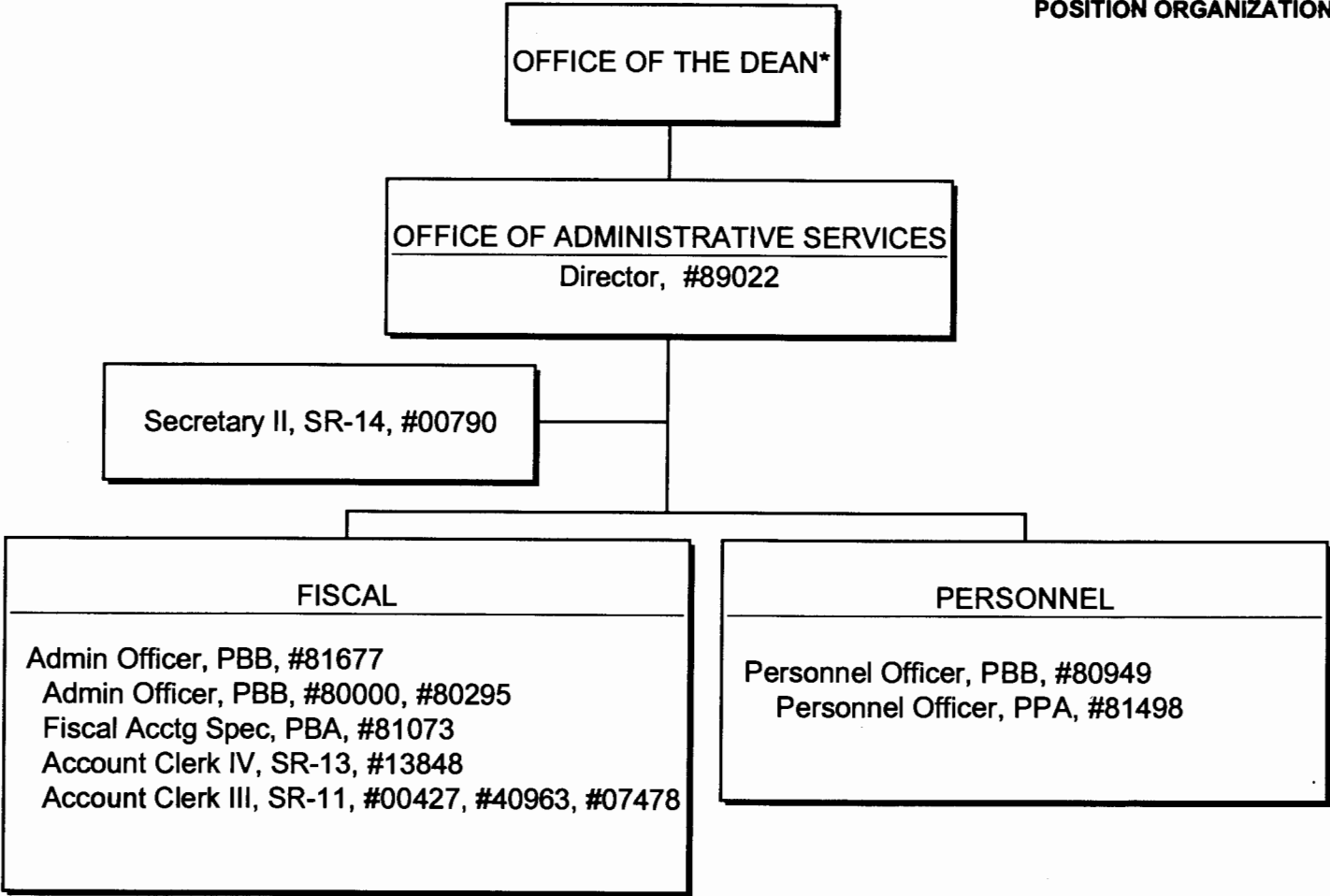
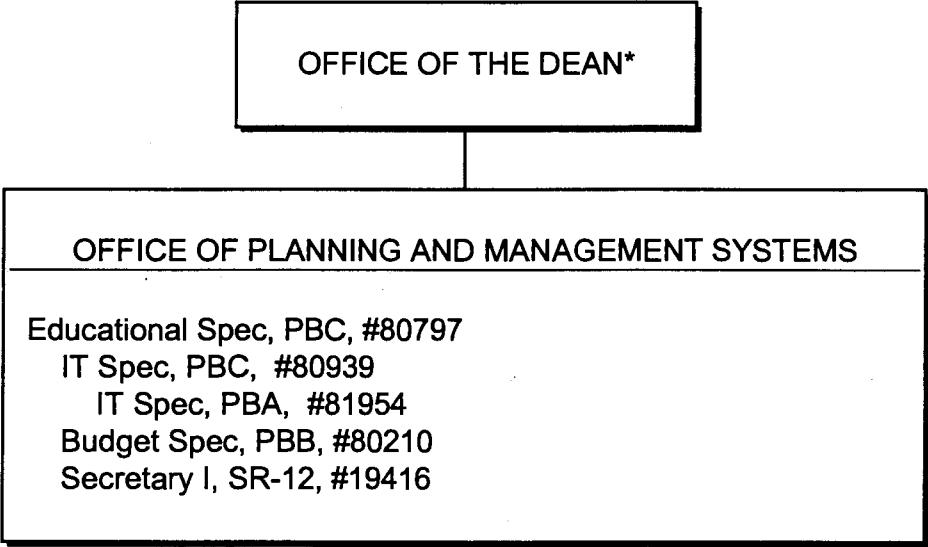


CHART UPDATED  
DATE JUL - 1 2005

\* & Director of Research and Cooperative Extension

STATE OF HAWAII  
UNIVERSITY OF HAWAII  
UNIVERSITY OF HAWAII AT MANOA  
COLLEGE OF TROPICAL AGRICULTURE AND HUMAN RESOURCES

OFFICE OF PLANNING AND MANAGEMENT SYSTEMS  
POSITION ORGANIZATION CHART: XLI-D



\*& Director of Research and Cooperative Extension

CHART UPDATED

DATE JUL - 1 2005

STATE OF HAWAII  
UNIVERSITY OF HAWAII  
UNIVERSITY OF HAWAII AT MANOA  
COLLEGE OF TROPICAL AGRICULTURE AND HUMAN RESOURCES

OFFICE OF THE ASSOCIATE DEAN FOR ACADEMIC AND STUDENT  
AFFAIRS  
POSITION ORGANIZATION CHART: XLI-E

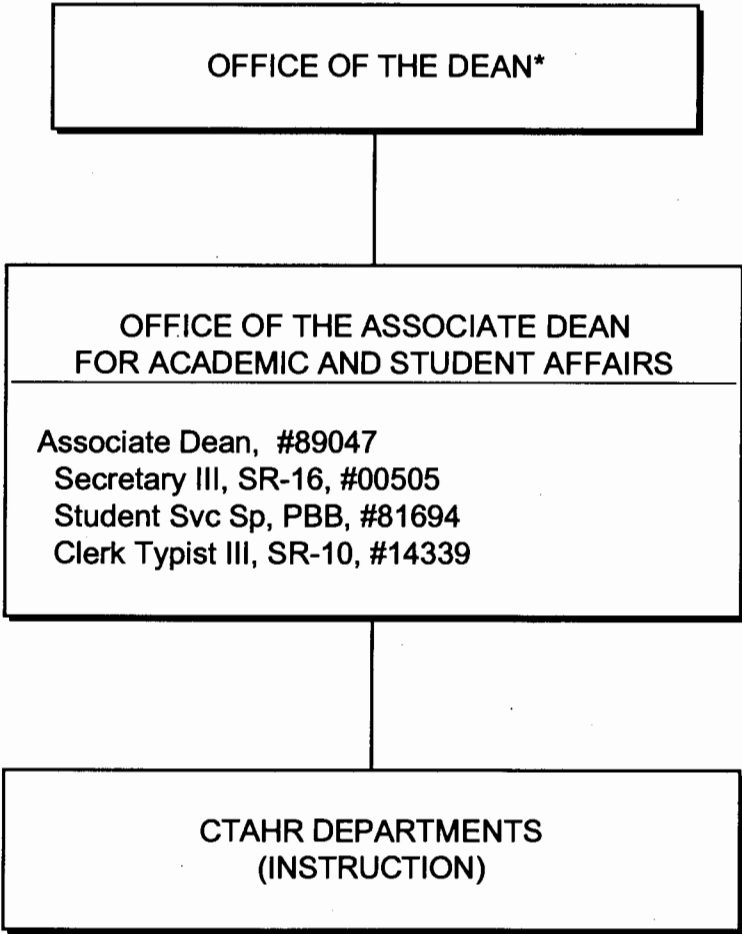
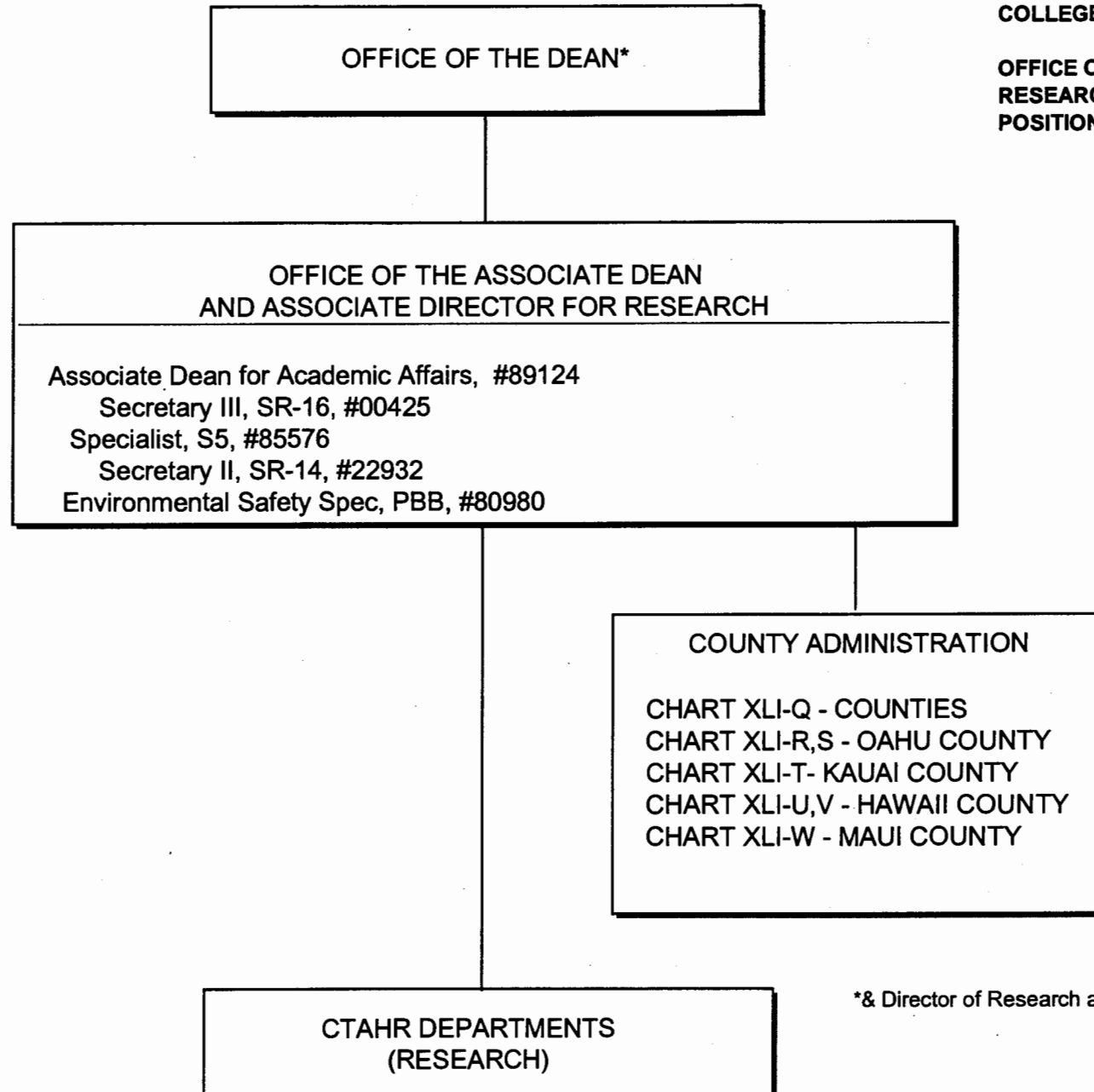


CHART UPDATED  
JUL - 1 2003  
DATE \_\_\_\_\_

\*& Director of Research and Cooperative  
Extension

STATE OF HAWAII  
UNIVERSITY OF HAWAII  
UNIVERSITY OF HAWAII AT MANOA  
COLLEGE OF TROPICAL AGRICULTURE AND HUMAN RESOURCES

OFFICE OF THE ASSOCIATE DEAN AND ASSOCIATE DIRECTOR FOR  
RESEARCH  
POSITION ORGANIZATION CHART: XLI-F

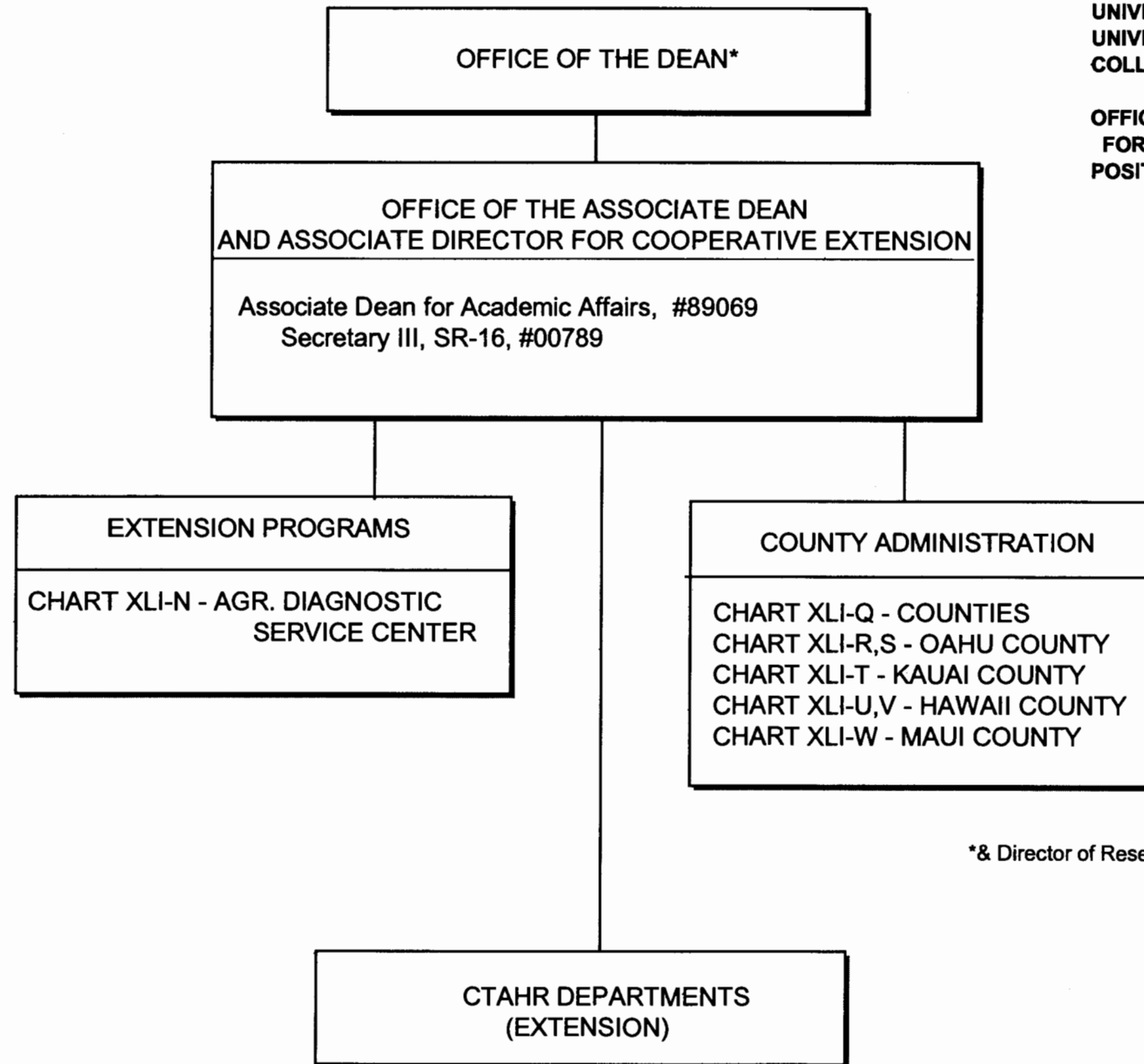


\* & Director of Research and Cooperative Extension

CHART UPDATED  
DATE JUL - 1 2005

STATE OF HAWAII  
UNIVERSITY OF HAWAII  
UNIVERSITY OF HAWAII AT MANOA  
COLLEGE OF TROPICAL AGRICULTURE AND HUMAN RESOURCES

OFFICE OF THE ASSOCIATE DEAN AND ASSOCIATE DIRECTOR  
FOR COOPERATIVE EXTENSION  
POSITION ORGANIZATION CHART: XLI-G



\* & Director of Research and Cooperative Extension

CHART UPDATED  
JUL - 1 2005  
DATE \_\_\_\_\_

OFFICES OF THE ASSOCIATE DEANS AND DIRECTORS  
FOR ACADEMIC AND STUDENT AFFAIRS,  
RESEARCH, AND COOPERATIVE EXTENSION

STATE OF HAWAII  
UNIVERSITY OF HAWAII  
UNIVERSITY OF HAWAII AT MANOA  
COLLEGE OF TROPICAL AGRICULTURE AND HUMAN RESOURCES

DEPARTMENT OF FAMILY AND CONSUMER SCIENCES  
POSITION ORGANIZATION CHART: XLI-H

DEPARTMENT OF FAMILY AND CONSUMER SCIENCES

Chairperson (Appointed from among faculty positions)

Secretary II, SR-14, #22849

Clerk-Steno II, SR-09, #21208

Clerk-Typist II, SR-08, #04108

Faculty 1/

Oahu

#82074, #82336, #82392, #82485, #82699, #82866, #82869,  
#82094, #83220, #83242, #83525, #83553, #83666, #83765,  
#83843, #83968, #84070, #84082, #84388, #84648, #84662,  
#84685, #84914, #85151, #85421, #85476

Hawaii

#82505, #83267, #84610

Kauai

#82175

Maui

#84913

Graduate Assistant, GA, #88134 (.50), #88410 (.50),  
#88576 (.50)

CHART UPDATED  
DATE JUL - 1 2005

1/ Research FTE: .85, Extension FTE: 4.65, Instruction FTE: 13.60

OFFICES OF THE ASSOCIATE DEANS AND DIRECTORS  
FOR ACADEMIC AND STUDENT AFFAIRS,  
RESEARCH, AND COOPERATIVE EXTENSION

STATE OF HAWAII  
UNIVERSITY OF HAWAII  
UNIVERSITY OF HAWAII AT MANOA  
COLLEGE OF TROPICAL AGRICULTURE AND HUMAN RESOURCES

DEPARTMENT OF HUMAN NUTRITION, FOOD AND ANIMAL  
SCIENCES  
POSITION ORGANIZATION CHART: XLI-I

DEPARTMENT OF HUMAN NUTRITION, FOOD AND ANIMAL SCIENCES

Chairperson (Appointed from among faculty positions)

Secretary II, SR-14, #00400

Clerk-Typist II, SR-08, #12195, #15513, #42682

Faculty <sup>1/</sup>

Oahu

#82090, #82107, #82248, #82529, #82865, #82945, #83017, #83510, #83633, #83742, #83811, #83830, #83862,  
#84227, #84228, #84306, #84323, #84439, #84449, #84454, #84496, #84512, #84668, #84919, #84920, #87552

Maui

#83728, #84163

Hawaii

#84158, #84276, #84297

Kauai

#82363

Research Associate, PBB, #80410

Research Associate, PBA, #77092

IT Spec, PBB, #80037

Graduate Asst, GA-R, #88088 (.50), #88165 (.50), #88241 (.50), #88303 (.50), #88438 (.50),  
#88565 (.50)

Agr Research Technician VI, SR-18 #00428

Agr Research Technician V, SR-16, #00395, #00396, #00432, #11024

Agr Research Technician IV, SR-14, #00433

Agr Research Technician III, SR-11, #00418, #00434, #03712

Agr Research Aid II, SR-09, #00441

Equipment Operator III, BC-09, #00419

CHART UPDATED

DATE JUL - 1 2005

<sup>1/</sup> Research FTE: 5.15, Extension FTE: 2.35, Instruction FTE: 8.25

STATE OF HAWAII  
UNIVERSITY OF HAWAII  
UNIVERSITY OF HAWAII AT MANOA  
COLLEGE OF TROPICAL AGRICULTURE AND HUMAN RESOURCES

DEPARTMENT OF MOLECULAR BIOSCIENCES AND BIOSYSTEMS  
ENGINEERING  
POSITION ORGANIZATION CHART: XLI-J

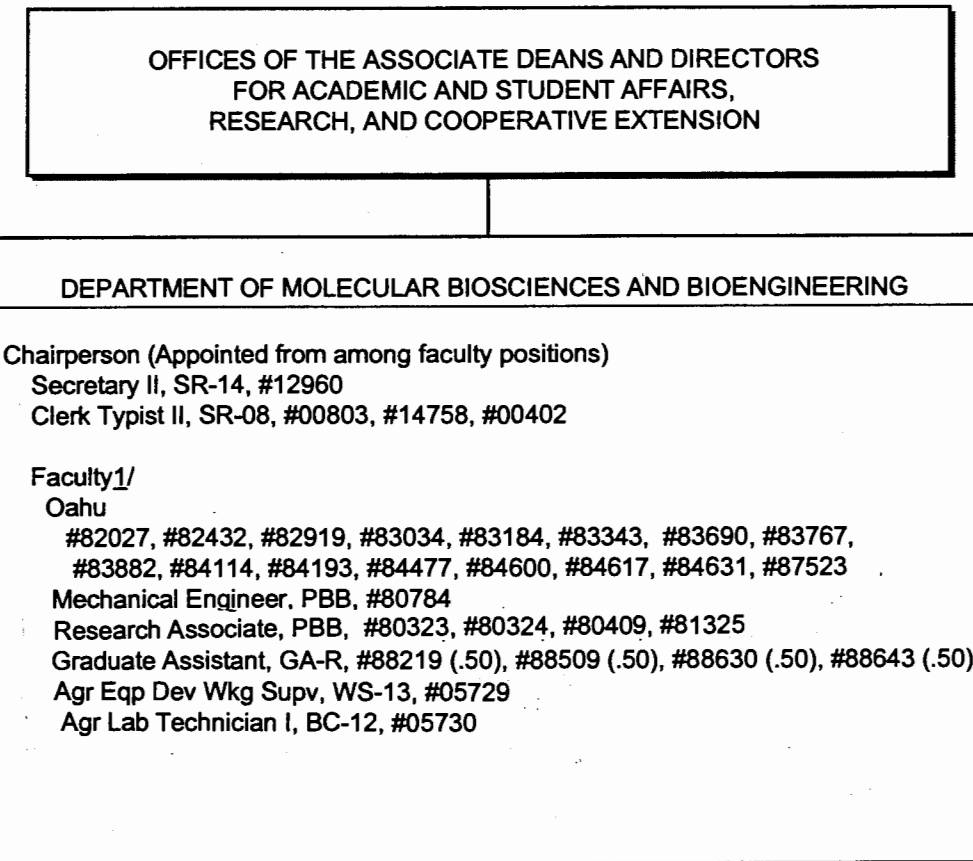


CHART UPDATED  
DATE JUL - 1 2005

<sup>1/</sup> Research FTE: 5.35, Extension FTE: 1.30, Instruction FTE: 3.80

STATE OF HAWAII  
UNIVERSITY OF HAWAII  
UNIVERSITY OF HAWAII AT MANOA  
COLLEGE OF TROPICAL AGRICULTURE AND HUMAN RESOURCES

DEPARTMENT OF NATURAL RESOURCES AND ENVIRONMENTAL  
MANAGEMENT  
POSITION ORGANIZATION CHART: XLI-K

OFFICES OF THE ASSOCIATE DEANS AND DIRECTORS  
FOR ACADEMIC AND STUDENT AFFAIRS,  
RESEARCH, AND COOPERATIVE EXTENSION

DEPARTMENT OF NATURAL RESOURCES AND ENVIRONMENTAL MANAGEMENT

Chairperson (Appointed from among faculty positions)

Secretary II, SR-14, #05838

Clerk Typist II, SR-08, #00397, #42681

Faculty 1/

Oahu

#82058, #82516, #82598, #82772, #83117, #83629, #83770, #83824, #83851,  
#84120, #84171, #84216, #84488, #84627, #84872, #84915

Hawaii

#82373, #83459

Educational Spec. PBB, #80391

Research Associate, PBA, #80320

Graduate Assistant, GA #88028 (.50), #88181 (.50), #88431 (.50), #88494 (.50)

Agr Research Technician IV, SR-14, #00398

CHART UPDATED  
DATE JUL - 1 2005

1/ Research FTE: 5.90, Extension FTE: 3.05, Instruction FTE:3.90

OFFICES OF THE ASSOCIATE DEANS AND DIRECTORS  
FOR ACADEMIC AND STUDENT AFFAIRS,  
RESEARCH, AND COOPERATIVE EXTENSION

STATE OF HAWAII  
UNIVERSITY OF HAWAII  
UNIVERSITY OF HAWAII AT MANOA  
COLLEGE OF TROPICAL AGRICULTURE AND HUMAN RESOURCES

DEPARTMENT OF PLANT AND ENVIRONMENTAL PROTECTION  
SCIENCES  
POSITION ORGANIZATION CHART: XLI-L

DEPARTMENT OF PLANT AND ENVIRONMENTAL PROTECTION SCIENCES

Chairperson (Appointed from among faculty positions)

Secretary II, SR-14, #07477

Clerk-Typist II, SR-08, #00794, #00801, #15509

Faculty <sup>1/</sup>

Oahu

#82047, #82139, #82238, #82550, #82687, #82976, #83067,  
#83320, #83513, #83884, #84006, #84041, #84138, #84316,  
#84489, #84911, #85510, #85547, #87443

Maui

#86034, #85530

Hawaii

#82985, #82722, #83255, #83462, #83542, #85538

Kauai

#83816, #83840, #85505

Educational Specialist, PBB, #80250

Research Associate, PBB, #80385, #80386, #80388, #81178,  
#81311

Research Associate, PBA, #81313

Graduate Assistant, GA, #88486 (.50), #84932 (.50)

Agr Research Technician V, SR-16, #00442

Agr Research Technician IV, SR-14, #24270

Agr Research Technician III, SR-11, #24269

CHART UPDATED  
DATE JUL - 1 2005

<sup>1/</sup> Research FTE: 4.66, Extension FTE: 2.95, Instruction FTE: 2.80

OFFICES OF THE ASSOCIATE DEANS AND DIRECTORS  
FOR ACADEMIC AND STUDENT AFFAIRS,  
RESEARCH, AND COOPERATIVE EXTENSION

STATE OF HAWAII  
UNIVERSITY OF HAWAII  
UNIVERSITY OF HAWAII AT MANOA  
COLLEGE OF TROPICAL AGRICULTURE AND HUMAN  
RESOURCES  
  
DEPARTMENT OF TROPICAL PLANT AND SOIL SCIENCE  
POSITION ORGANIZATION CHART: XLI-M

DEPARTMENT OF TROPICAL PLANT AND SOIL SCIENCE

Chairperson (Appointed from among faculty positions)  
Secretary II, SR-14, #00793, #15512 1/  
Clerk-Steno III, SR-11, #00399  
Faculty 2/  
Oahu  
#82023, #82181, #82240, #82313, #82464, #82704, #82747, #83142,  
#83159, #83260, #83304, #83388, #83682, #83740, #83785, #83938,  
#84067, #84321, #84408, #84420, #84481, #84501, #84640, #84916,  
#85555  
Maui  
#82881, #83848, #84075, #84530, #85477, #87584  
Hawaii  
#82758, #83054, #82951, #83073, #83286, #83515, #84354, #85542  
Kauai  
#82196, #84500  
Admin & Fiscal Support, PBA, #77795  
Educational Specialist, PBB, #81362  
Research Associate, PBB, #80270, #80313  
Graduate Assistant, GA, #88171 (.50), #88423 (.50)  
Agr Research Technician V, SR-16, #11019  
Agr Research Technician IV, SR-14, #05392, #00397

CHART UPDATED  
JUL - 1 2005  
DATE \_\_\_\_\_

1/Position to be redescribed.  
2/Research FTE: 6.35, Extension FTE: 8.66, Instruction FTE: 3.77

STATE OF HAWAII  
UNIVERSITY OF HAWAII  
UNIVERSITY OF HAWAII AT MANOA  
COLLEGE OF TROPICAL AGRICULTURE AND HUMAN RESOURCES

AGRICULTURAL DIAGNOSTIC SERVICE CENTER  
POSITION ORGANIZATION CHART: XLI-N

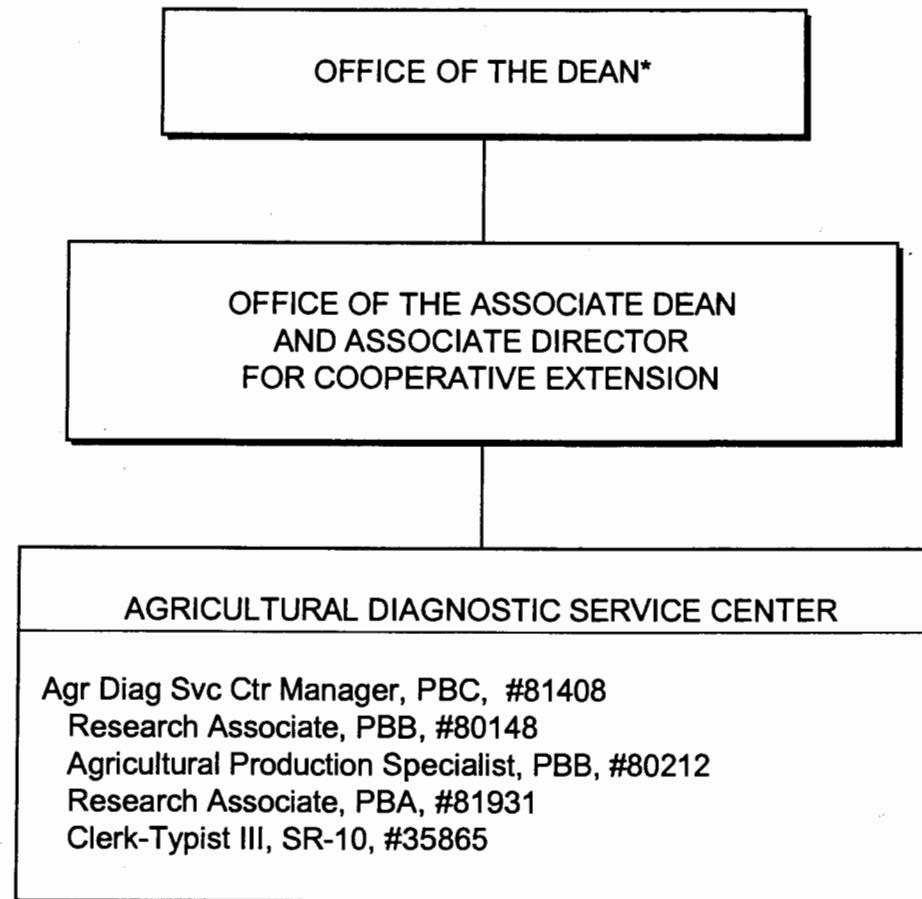


CHART UPDATED  
DATE JUL - 1 2005

\* & Director of Research and Cooperative Extension

STATE OF HAWAII  
UNIVERSITY OF HAWAII  
UNIVERSITY OF HAWAII AT MANOA  
COLLEGE OF TROPICAL AGRICULTURE AND HUMAN RESOURCES

CENTER ON THE FAMILY  
POSITION ORGANIZATION CHART: XLI-O

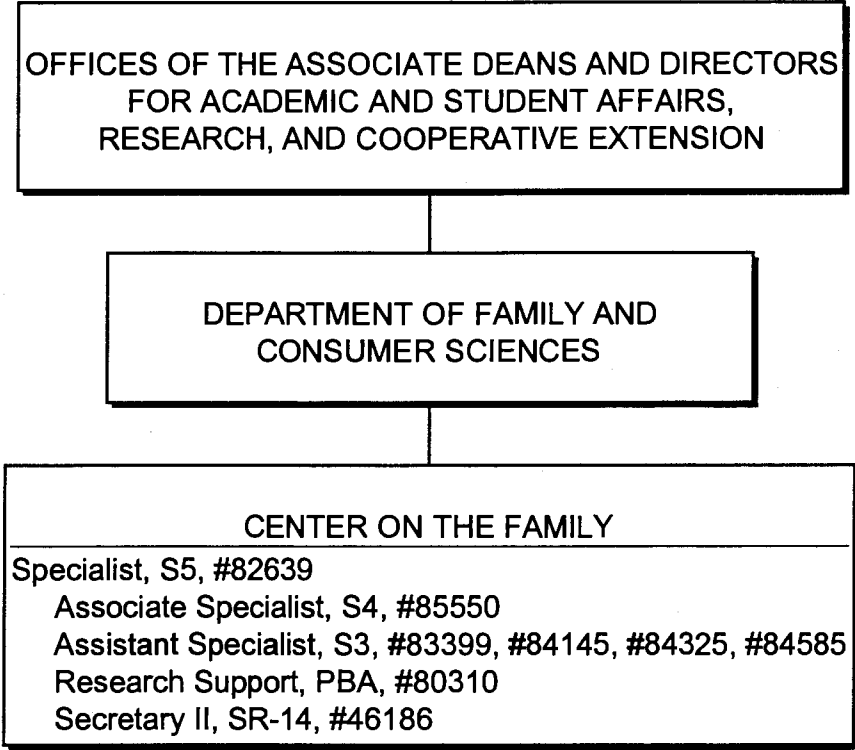


CHART UPDATED  
DATE JUL - 1 2005

STATE OF HAWAII  
UNIVERSITY OF HAWAII  
UNIVERSITY OF HAWAII AT MANOA  
COLLEGE OF TROPICAL AGRICULTURE AND HUMAN RESOURCES

4-H OFFICE  
POSITION ORGANIZATION CHART: XLI-P

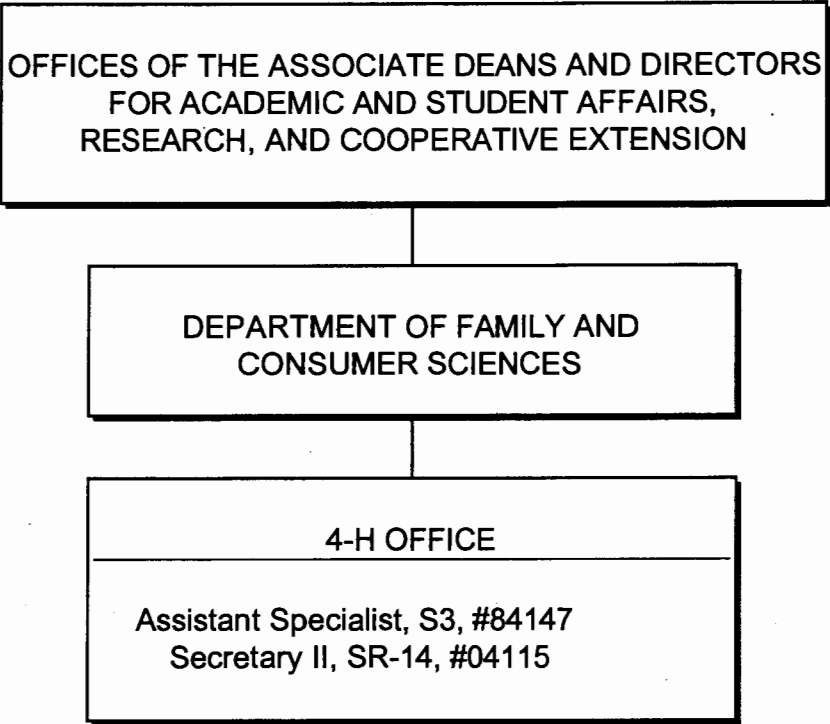


CHART UPDATED  
DATE JUL - 1 2005

STATE OF HAWAII  
UNIVERSITY OF HAWAII  
UNIVERSITY OF HAWAII AT MANOA  
COLLEGE OF TROPICAL AGRICULTURE AND HUMAN RESOURCES

COUNTY ADMINISTRATION  
POSITION ORGANIZATION CHART: XLI-Q

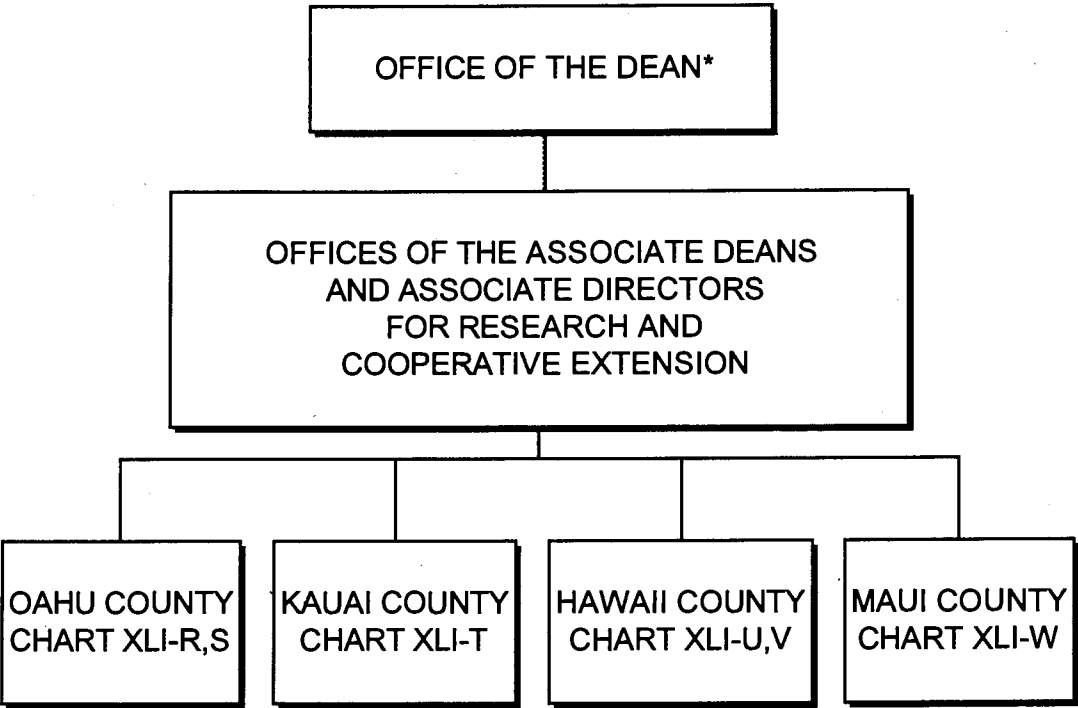


CHART UPDATED  
DATE JUL - 1 2005

\*& Director of Cooperative Science & Education

STATE OF HAWAII  
UNIVERSITY OF HAWAII  
UNIVERSITY OF HAWAII AT MANOA  
COLLEGE OF TROPICAL AGRICULTURE AND HUMAN RESOURCES

OAHU COUNTY  
POSITION ORGANIZATION CHART: XLI-R

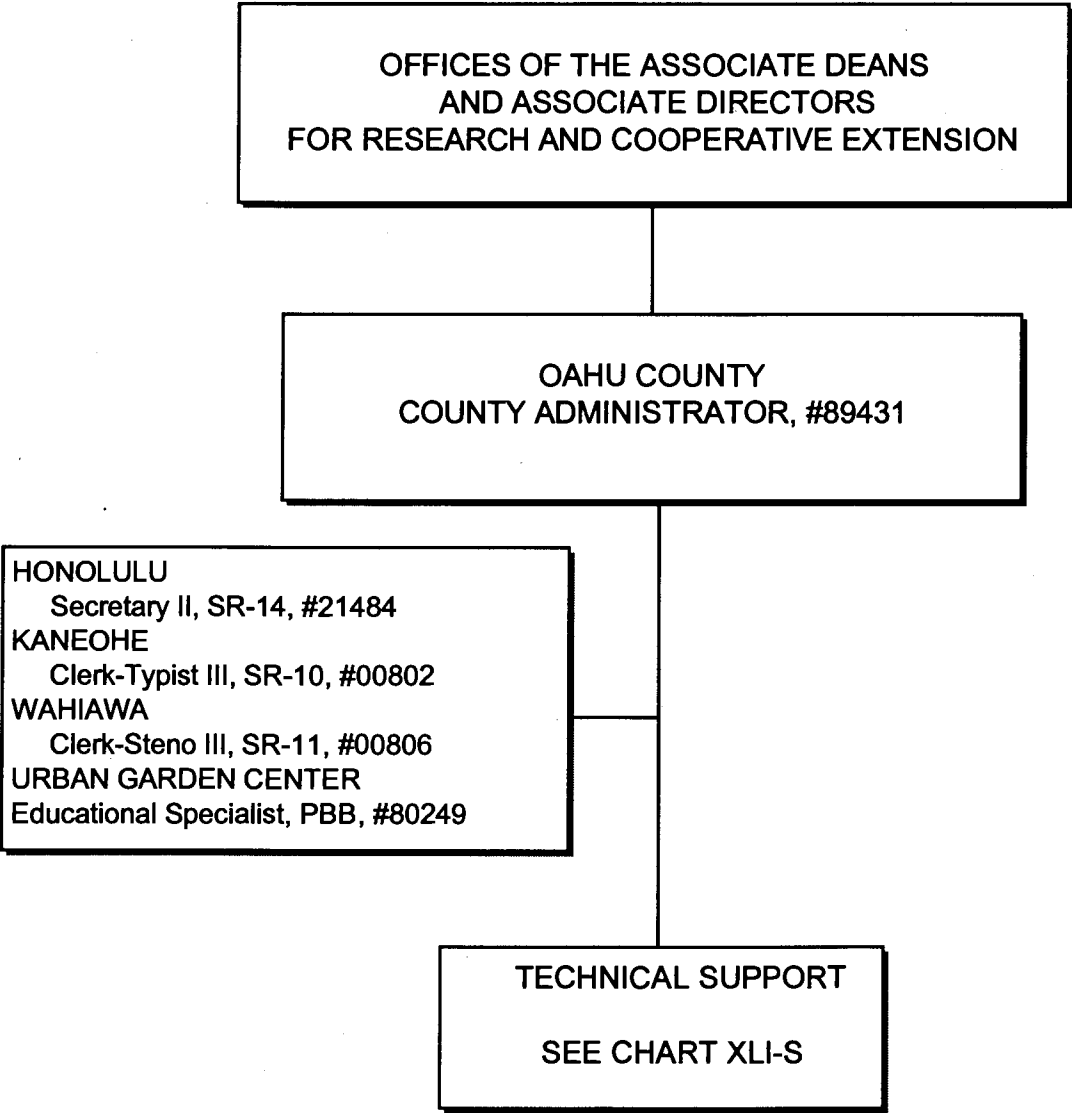


CHART UPDATED  
JUL - 1 2005  
DATE \_\_\_\_\_

STATE OF HAWAII  
UNIVERSITY OF HAWAII  
UNIVERSITY OF HAWAII AT MANOA  
COLLEGE OF TROPICAL AGRICULTURE  
AND HUMAN RESOURCES

OAHU COUNTY - TECHNICAL SUPPORT  
POSITION ORGANIZATION CHART: XLI-S

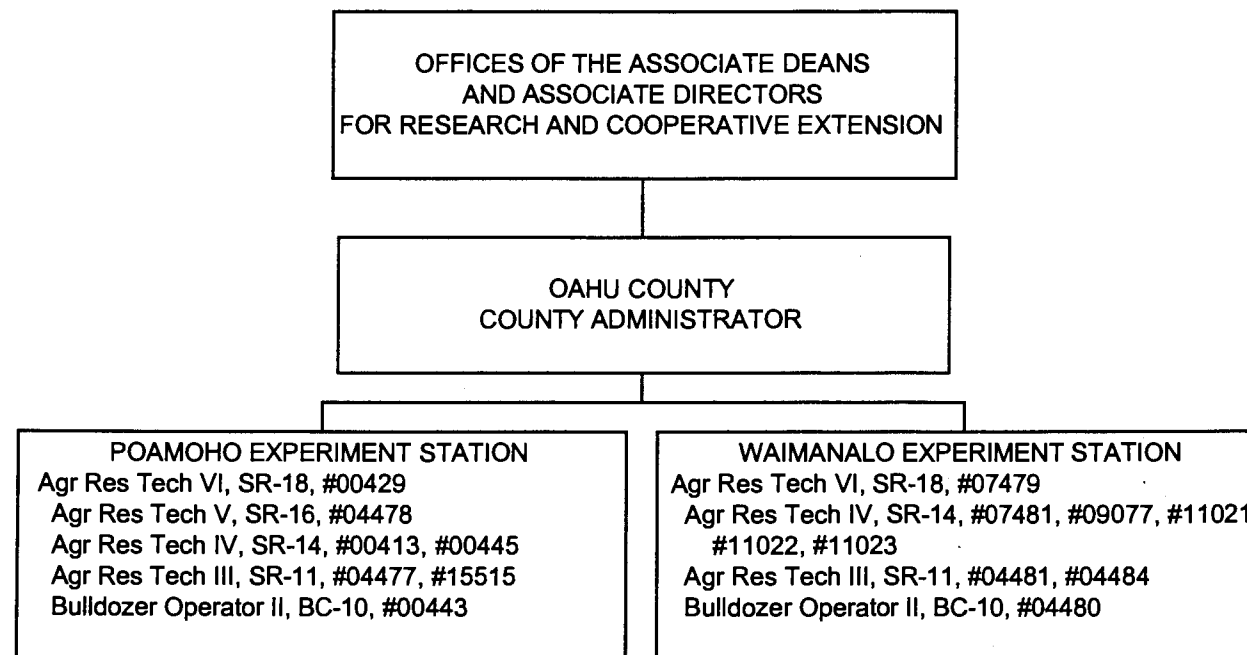


CHART UPDATED  
DATE JUL - 1 2005

STATE OF HAWAII  
UNIVERSITY OF HAWAII  
UNIVERSITY OF HAWAII AT MANOA  
COLLEGE OF TROPICAL AGRICULTURE AND HUMAN RESOURCES

KAUAI COUNTY  
POSITION ORGANIZATION CHART: XLI-T

OFFICES OF THE ASSOCIATE DEANS  
AND ASSOCIATE DIRECTORS  
FOR RESEARCH AND COOPERATIVE EXTENSION

KAUAI COUNTY  
COUNTY ADMINISTRATOR  
#89216

LIHUE  
Secretary II, SR-14, #04003  
KAPAA  
Clerk-Steno III, SR-11, #13872

TECHNICAL SUPPORT  
KAPAA  
Agr Res Tech VI, SR-18, #12753  
Agr Res Tech IV, SR-14, #12102, #12758  
Agr Res Tech III, SR-11, #12760, #12761, #14344

CHART UPDATED  
DATE JUL - 1 2005

STATE OF HAWAII  
UNIVERSITY OF HAWAII  
UNIVERSITY OF HAWAII AT MANOA  
COLLEGE OF TROPICAL AGRICULTURE AND HUMAN RESOURCES

HAWAII COUNTY  
POSITION ORGANIZATION CHART: XLI-U

OFFICES OF THE ASSOCIATE DEANS  
AND ASSOCIATE DIRECTORS  
FOR RESEARCH AND COOPERATIVE EXTENSION

HAWAII COUNTY  
COUNTY ADMINISTRATOR, #89213

KOMOHANA  
Clerk-Steno III, SR-11, #09084  
Clerk-Typist II, SR-08, #00791  
  
BEAUMONT  
Secretary II, SR-14, #13871  
KONA  
Clerk-Typist III, SR-10, #00797  
Kamuela  
Clerk-Steno III, SR-11, #00799

TECHNICAL SUPPORT  
SEE CHART XLI-V

CHART UPDATED  
DATE JUL - 1 2005

OFFICES OF THE ASSOCIATE DEANS  
AND ASSOCIATE DIRECTORS  
FOR RESEARCH AND COOPERATIVE EXTENSION

HAWAII COUNTY  
COUNTY ADMIN, #89213  
Educational Spec, PBB, #80311

STATE OF HAWAII  
UNIVERSITY OF HAWAII  
UNIVERSITY OF HAWAII AT MANOA  
COLLEGE OF TROPICAL AGRICULTURE AND HUMAN RESOURCES

HAWAII COUNTY - TECHNICAL SUPPORT  
POSITION ORGANIZATION CHART: XLI-V

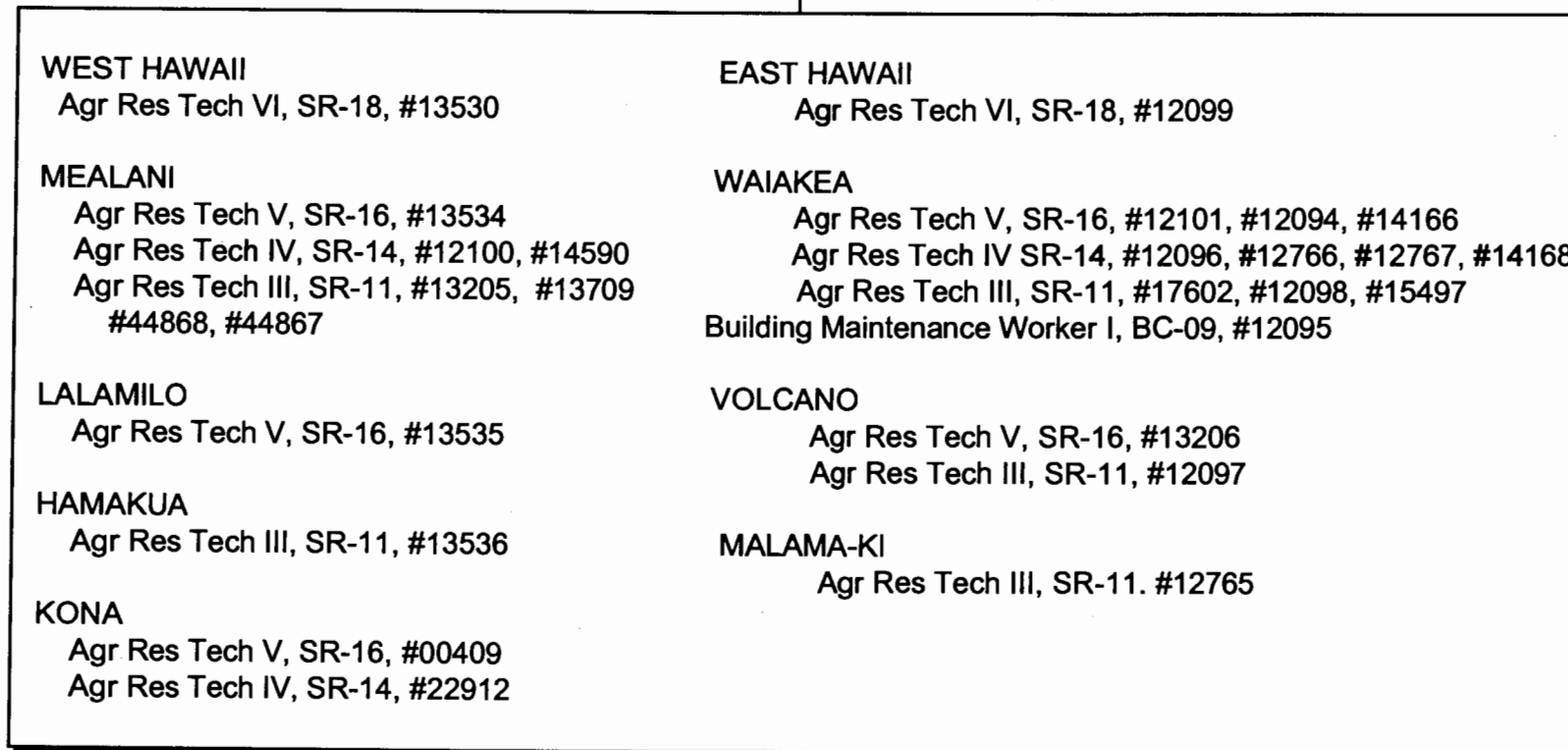


CHART UPDATED  
JUL - 1 2005  
DATE \_\_\_\_\_

STATE OF HAWAII  
UNIVERSITY OF HAWAII  
UNIVERSITY OF HAWAII AT MANOA  
COLLEGE OF TROPICAL AGRICULTURE AND HUMAN RESOURCES

MAUI COUNTY  
POSITION ORGANIZATION CHART: XLI-W

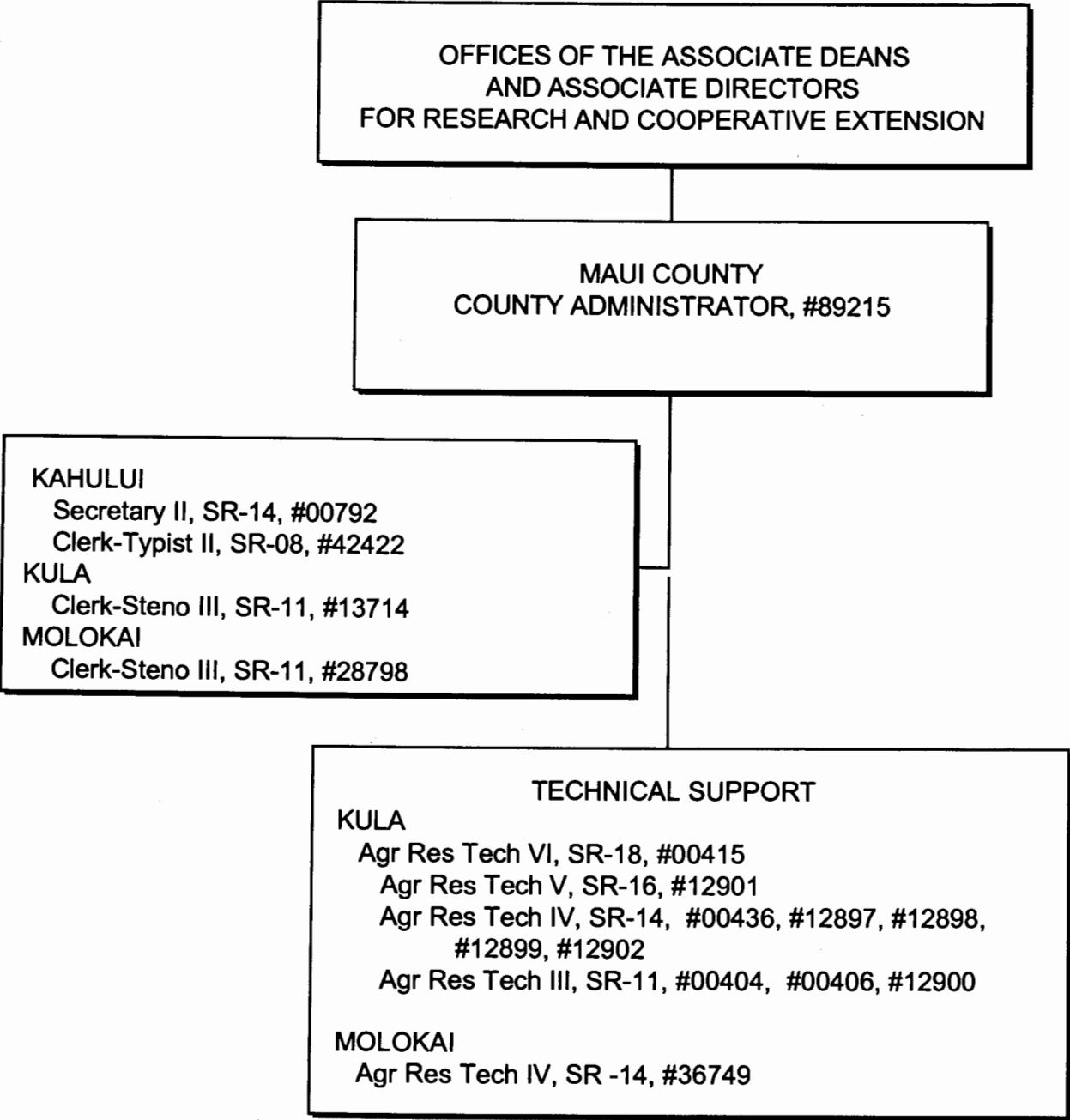


CHART UPDATED  
DATE JUL - 1 2005