

STATE OF HAWAII
UNIVERSITY OF HAWAII
UNIVERSITY OF HAWAII AT MANOA
OFFICE OF THE CHANCELLOR
**OFFICE OF THE VICE CHANCELLOR
FOR ACADEMIC AFFAIRS**

POSITION ORGANIZATION CHART
CHART II

GENERAL FUND FTE: 10.50

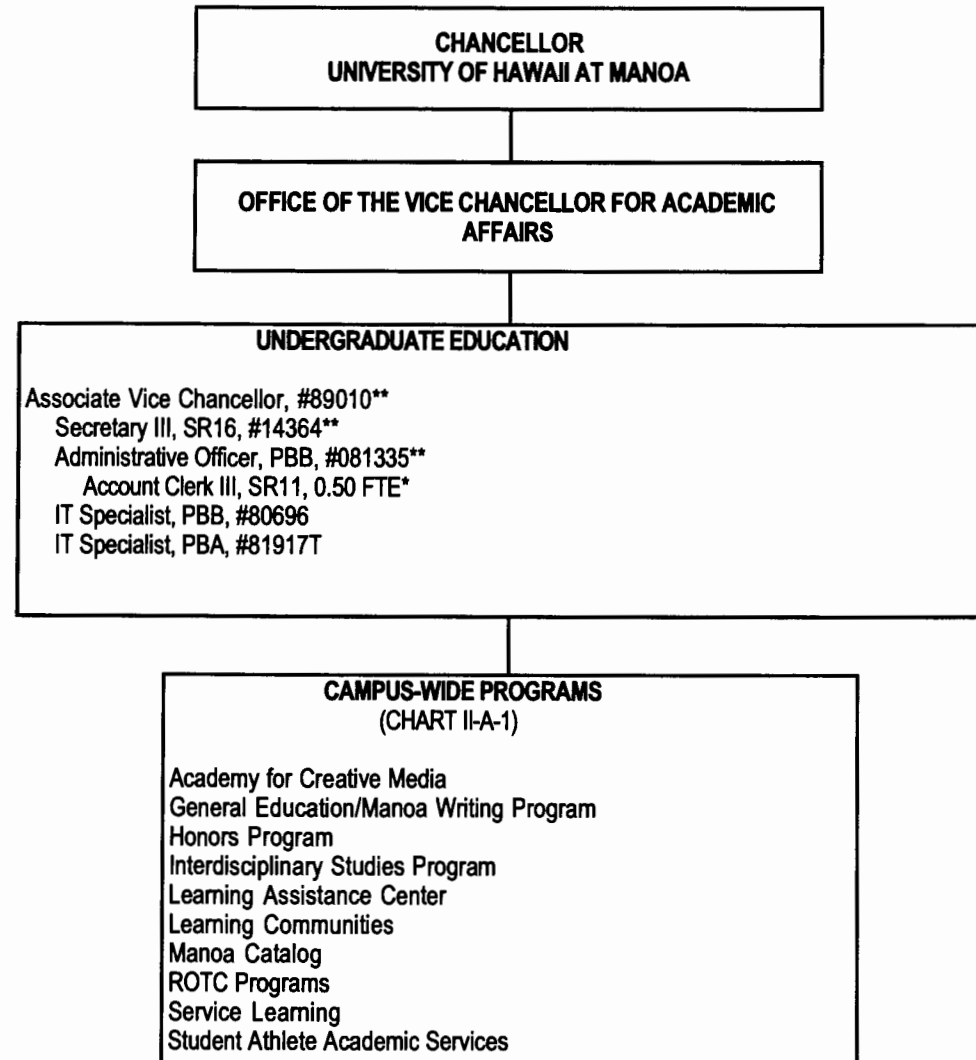
*new position approved in 2/17/05 reorg, position number to be determined

**new classification; subject to classification

***position to be converted to permanent., approved in 2/17/05 reorg

† Except JABSOM, Richardson School of Law, and the School of Ocean and Earth Science and Technology

CHART UPDATED
DATE JUL - 1 2005



STATE OF HAWAII
UNIVERSITY OF HAWAII
UNIVERSITY OF HAWAII AT MANOA
OFFICE OF THE CHANCELLOR
OFFICE OF THE VICE CHANCELLOR
FOR ACADEMIC AFFAIRS
UNDERGRADUATE EDUCATION

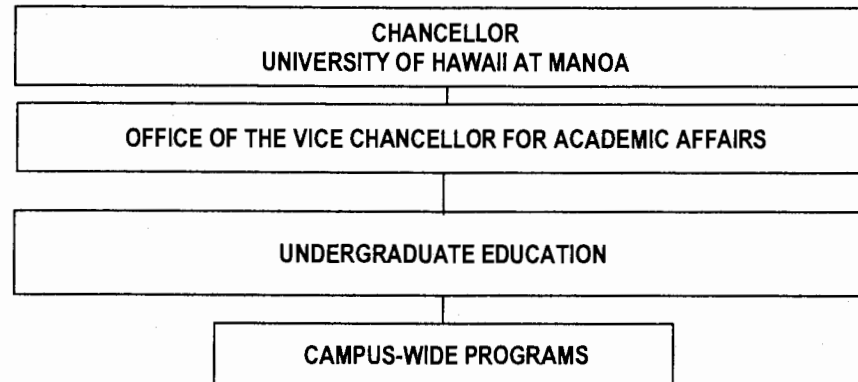
POSITION ORGANIZATION CHART
CHART II-A

GENERAL FUND FTE: 4.50
GENERAL FUND TEMP FTE: 1.00

*new position approved in 2/17/05 reorg, position
number to be determined
**proposed classification, position to be redescribed

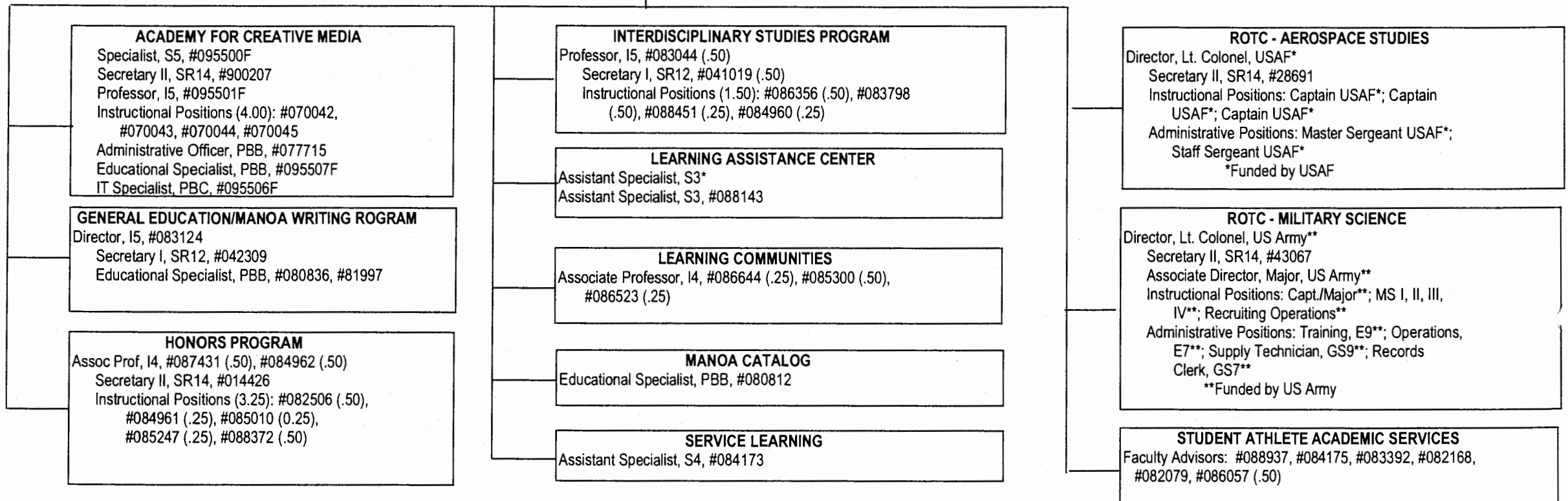
CHART UPDATED

DATE JUL - 1 2005



STATE OF HAWAII
UNIVERSITY OF HAWAII
UNIVERSITY OF HAWAII AT MANOA
OFFICE OF THE CHANCELLOR
OFFICE OF THE VICE CHANCELLOR
FOR ACADEMIC AFFAIRS
UNDERGRADUATE EDUCATION
CAMPUS-WIDE PROGRAMS

POSITION ORGANIZATION CHART
CHART II-A-1



*New position number to be assigned.

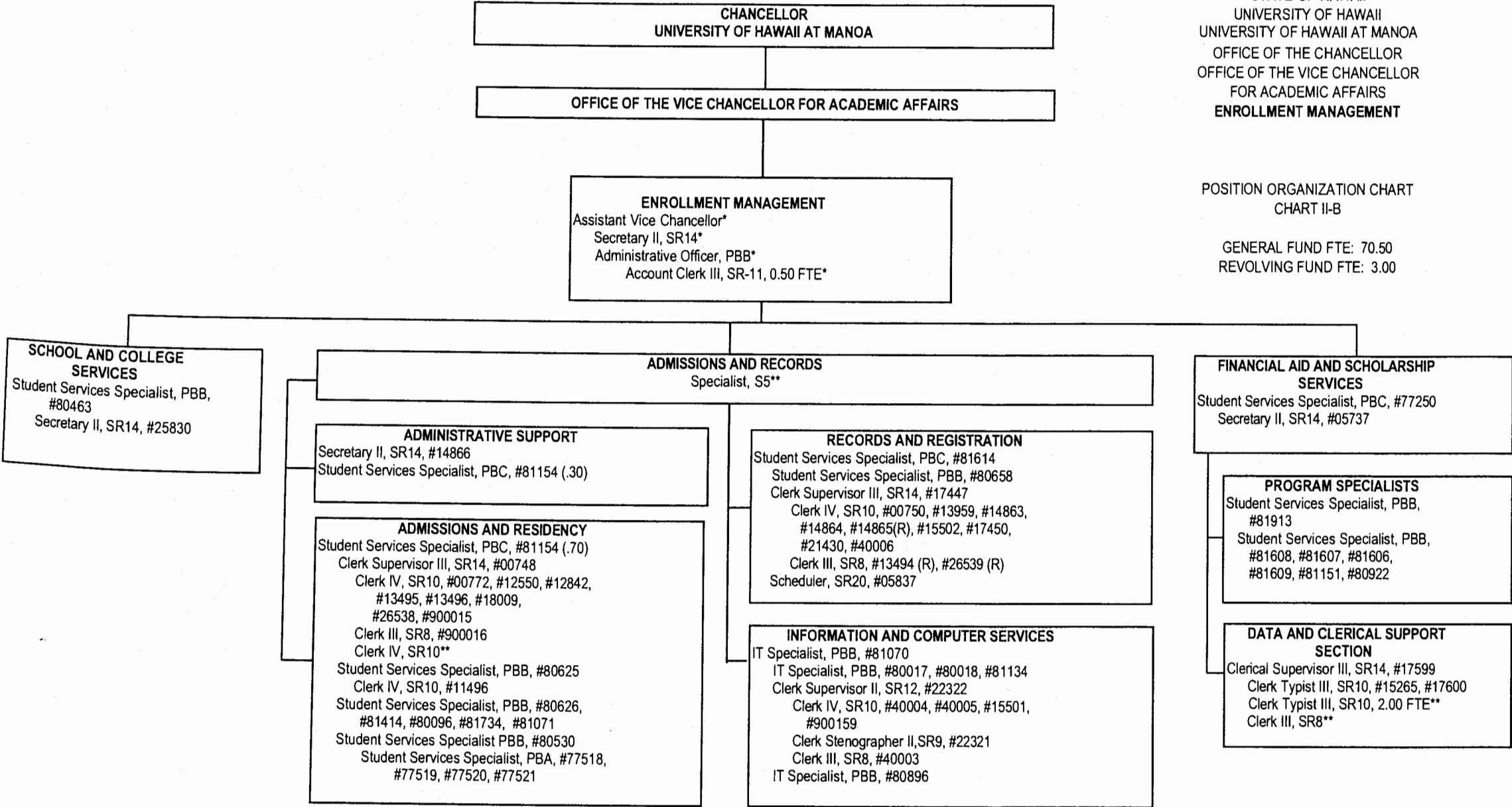
GENERAL FUND FTE: 32.75

CHART UPDATED
JUL - 1 2005
DATE _____

STATE OF HAWAII
UNIVERSITY OF HAWAII
UNIVERSITY OF HAWAII AT MANOA
OFFICE OF THE CHANCELLOR
OFFICE OF THE VICE CHANCELLOR
FOR ACADEMIC AFFAIRS
ENROLLMENT MANAGEMENT

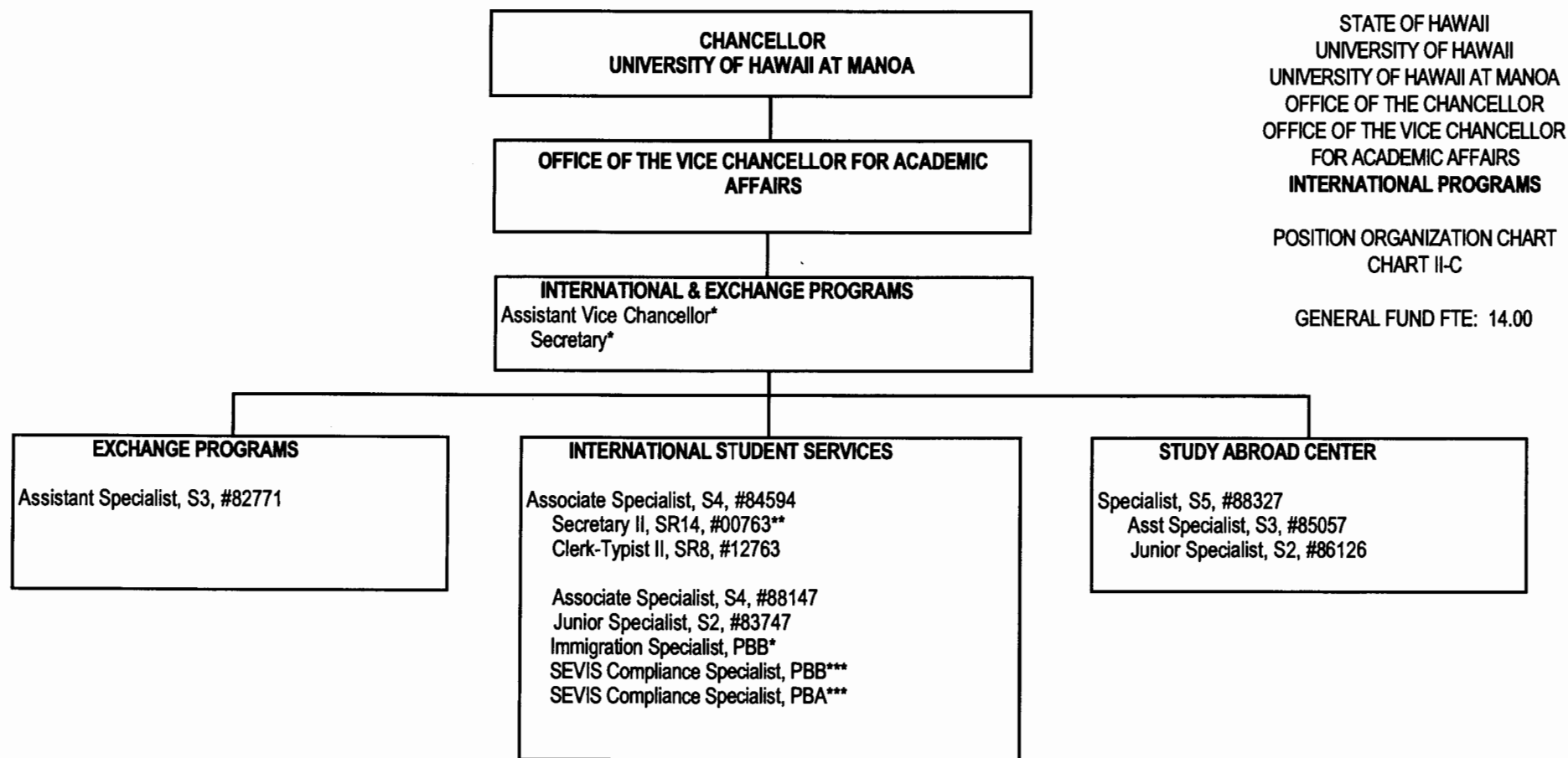
POSITION ORGANIZATION CHART
CHART II-B

GENERAL FUND FTE: 70.50
REVOLVING FUND FTE: 3.00



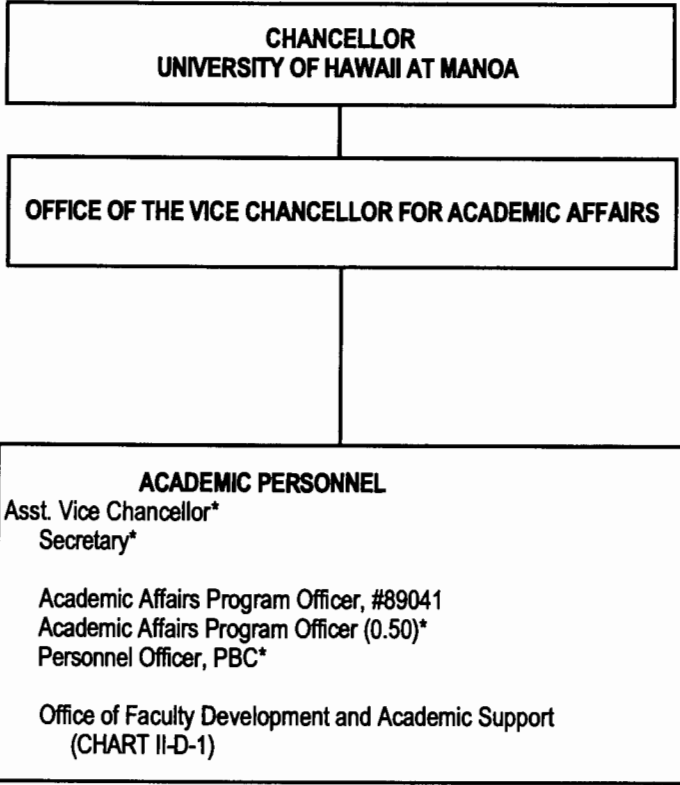
* new position approved in 2/17/05 reorg; position number to be determined
** Position number to be determined

CHART UPDATED
JUL - 1 2005
DATE _____



*new position approved in 2/17/05 reorg, position number to be determined
**proposed classification, position to be redescribed
***new position, authorized by 2004 Legislature, position number to be determined

CHART UPDATED
JUL -1 2005
DATE _____



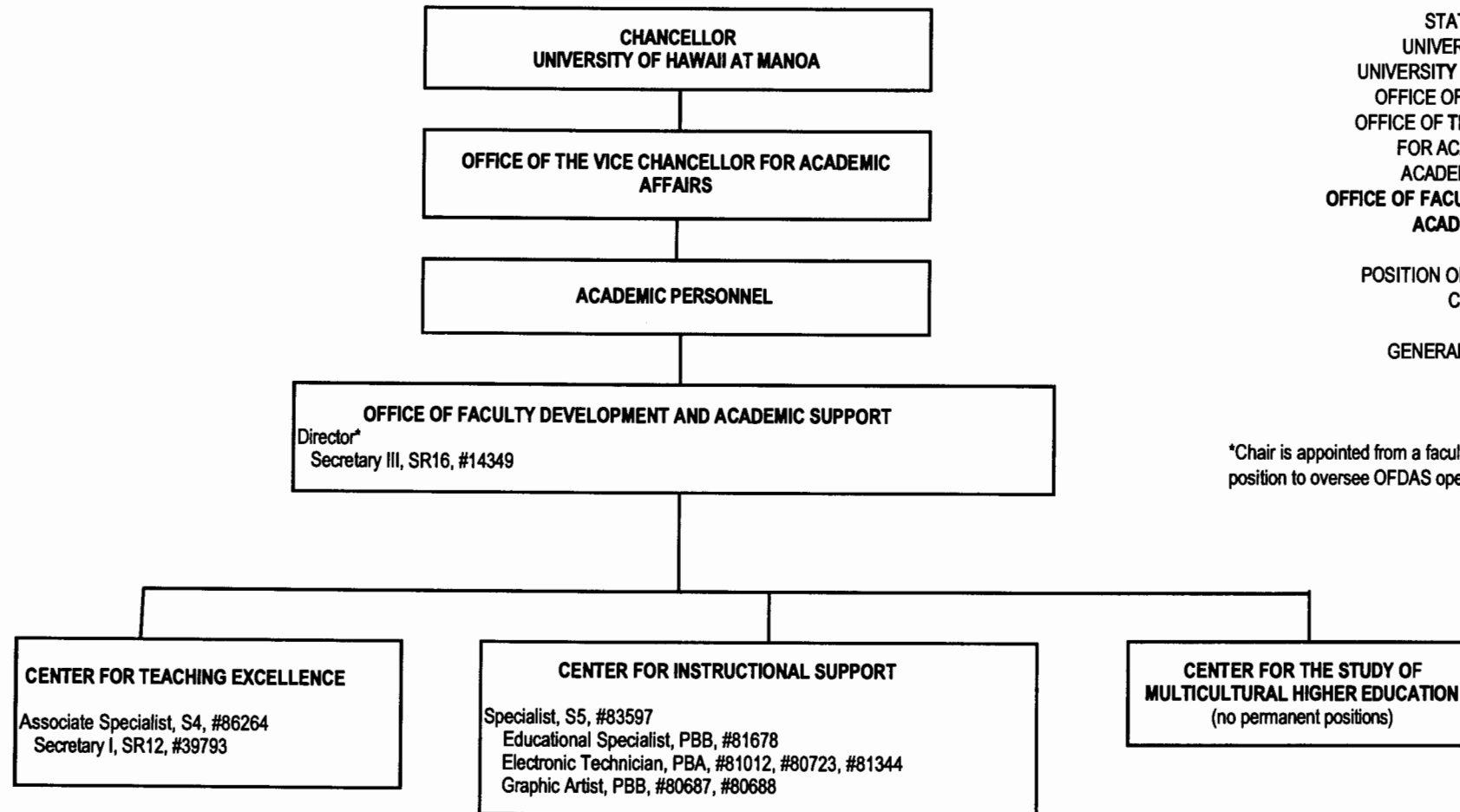
STATE OF HAWAII
UNIVERSITY OF HAWAII
UNIVERSITY OF HAWAII AT MANOA
OFFICE OF THE CHANCELLOR
OFFICE OF THE VICE CHANCELLOR
FOR ACADEMIC AFFAIRS
ACADEMIC PERSONNEL

POSITION ORGANIZATION CHART
CHART II-D

GENERAL FUND FTE: 4.50

*new position approved in 2/17/05 reorg, position number to be determined

CHART UPDATED
DATE JUL - 1 2005



STATE OF HAWAII
UNIVERSITY OF HAWAII
UNIVERSITY OF HAWAII AT MANOA
OFFICE OF THE CHANCELLOR
OFFICE OF THE VICE CHANCELLOR
FOR ACADEMIC AFFAIRS
ACADEMIC PERSONNEL
OFFICE OF FACULTY DEVELOPMENT AND
ACADEMIC SUPPORT

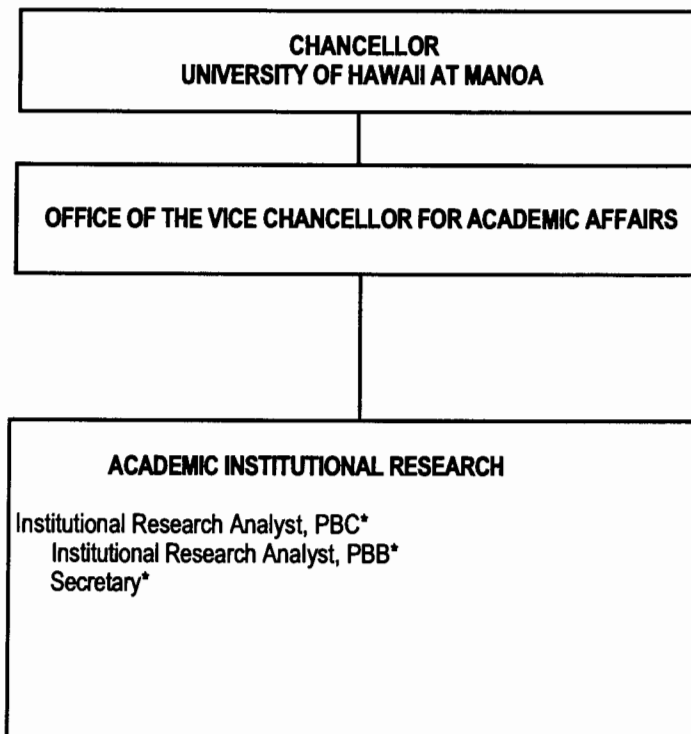
POSITION ORGANIZATION CHART
CHART II-D-1

GENERAL FUND FTE: 10.00

*Chair is appointed from a faculty
position to oversee OFDAS operations.

CHART UPDATED

DATE JUL - 1 2005



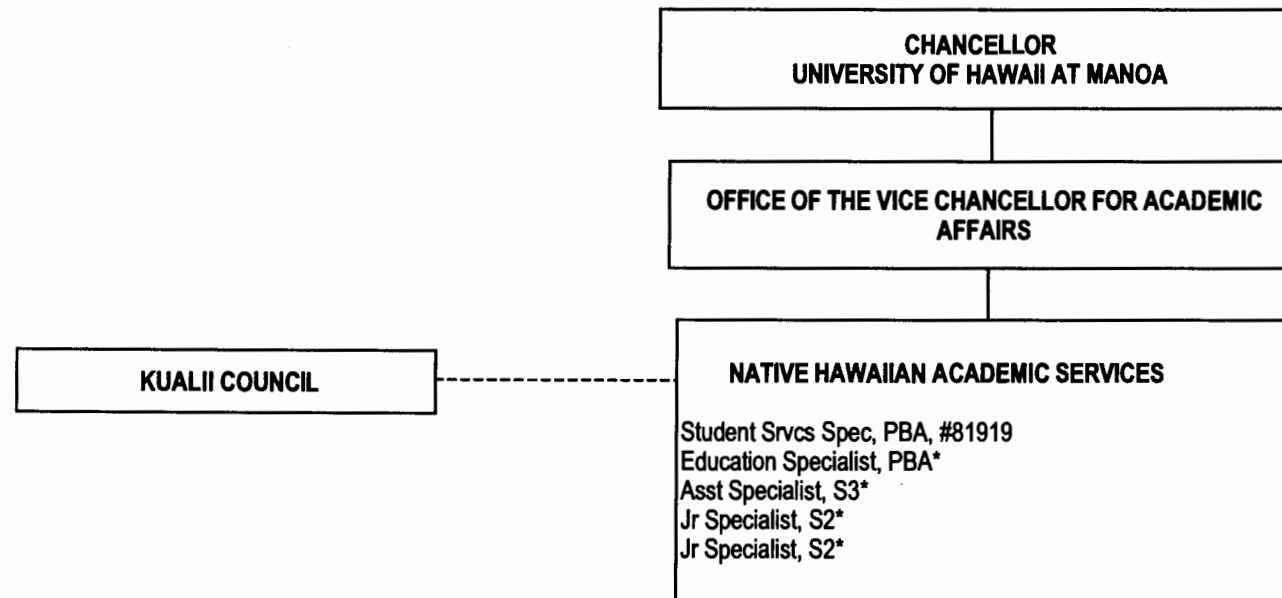
STATE OF HAWAII
UNIVERSITY OF HAWAII
UNIVERSITY OF HAWAII AT MANOA
OFFICE OF THE CHANCELLOR
OFFICE OF THE VICE CHANCELLOR
FOR ACADEMIC AFFAIRS
ACADEMIC INSTITUTIONAL RESEARCH

POSITION ORGANIZATION CHART
CHART II-E

GENERAL FUND FTE: 3.00

*new position approved in 2/17/05 reorg, position number to be determined

CHART UPDATED
DATE JUL - 1 2005



----- Denotes advisory relationship

*new position approved in 2/17/05 reorg, position number to be determined

STATE OF HAWAII
UNIVERSITY OF HAWAII
UNIVERSITY OF HAWAII AT MANOA
OFFICE OF THE CHANCELLOR
OFFICE OF THE VICE CHANCELLOR
FOR ACADEMIC AFFAIRS
NATIVE HAWAIIAN ACADEMIC SERVICES

POSITION ORGANIZATION CHART
CHART II-F

GENERAL FUND FTE: 5.00

CHART UPDATED
DATE JUL - 1 2005