

**CHANCELLOR  
UNIVERSITY OF HAWAII at MĀNOA**

**OFFICE OF THE VICE CHANCELOR FOR STUDENTS**

Vice Chancellor for Students, #89325\*\*  
Secretary III, #00745\*\*  
Associate Vice Chancellor, #89133\*\*  
Assoc. Specialist S4, #82637  
Kiosk Information Assistant, PBA\*

**ADMINISTRATIVE SERVICES OFFICE**

Administrative Officer, PBC, #80146  
Account Clerk III, SR11, #21426  
Personnel Officer, PBB, #81879  
Personnel Clerk V, SR13, #44556

**CAMPUS LIFE**  
(Chart IV-A)

Admin & Fiscal Support  
Clerical Support  
Intramural Sports  
Student Leadership Dev.  
& Co-Curricular Interventions  
Operational Programs, Facilities,  
& Services

**STUDENT CAREER AND  
EMPLOYMENT CENTER**  
(Chart IV-B)

Career Services  
Cooperative Education  
Student Employment

**STUDENT EQUITY,  
EXCELLENCE AND DIVERSITY**  
(Chart IV-C)

Children's Center  
College Opportunities Program  
KOKUA  
Multicultural Student Services  
Women's Center

**COUNSELING**  
(Chart IV-D)

Counseling  
Testing

**HEALTH AND WELLNESS**  
(Chart IV-E)

Admin Support  
Family Planning  
Medical Staff  
Nursing Staff  
Medical Laboratory  
Pharmacy

**JUDICIAL AFFAIRS**  
(Chart IV-F)

**RESIDENTIAL LIFE**  
(Chart IV-G)

Conference  
Assignments/Off-Campus Housing  
Fiscal & Personnel Support  
Educational Development  
Physical Plant  
Residential Halls

State of Hawai'i  
University of Hawai'i  
Office of the Chancellor  
University of Hawai'i at Mānoa

Office:  
**Vice Chancellor for Students**

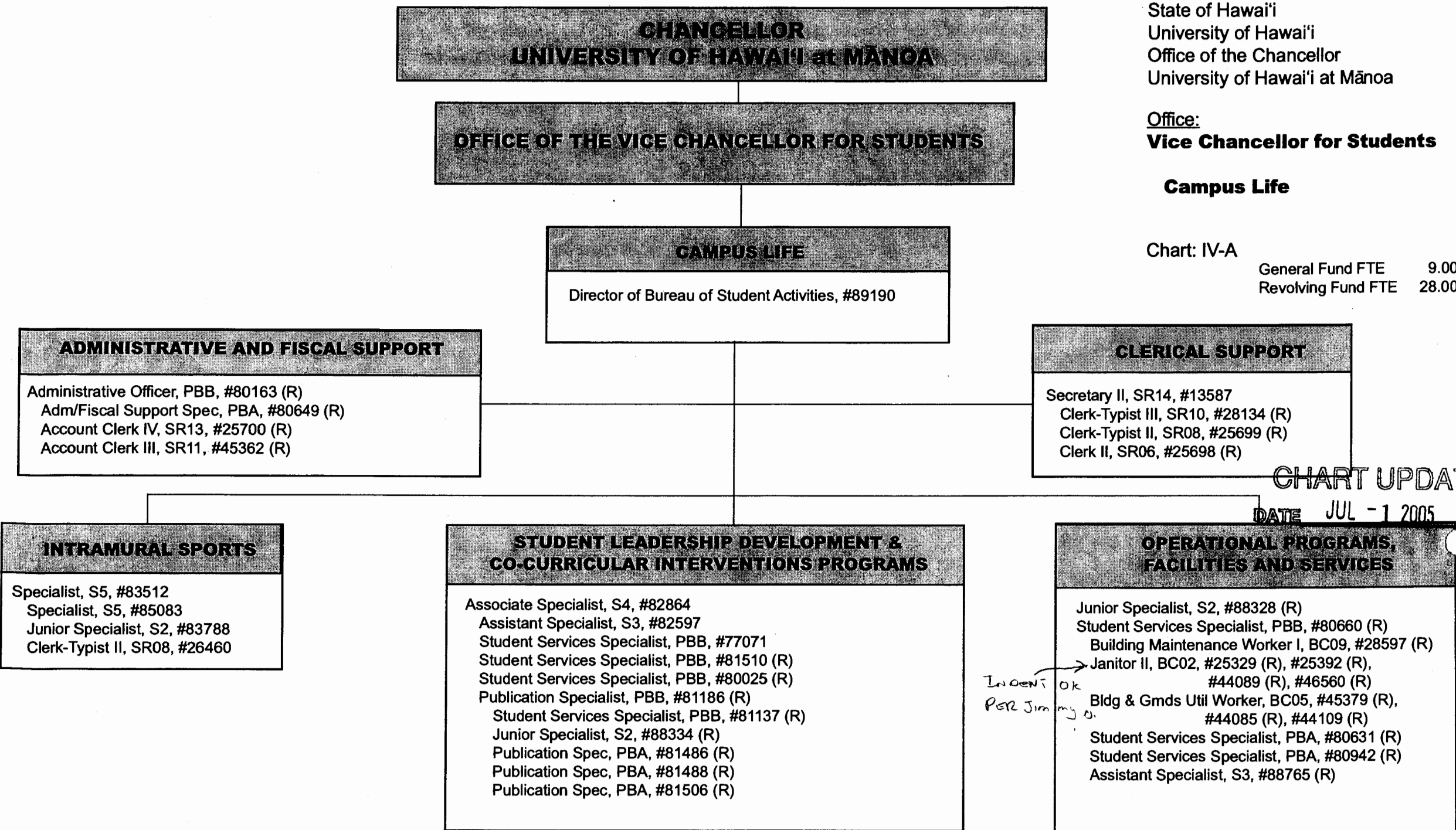
Chart: IV

General Fund FTE      8.00 (perm)

\*New, position number to be determined.  
Not included in position count

\*\* New classification; subject to classification

**CHART UPDATED**  
DATE JUL - 1 2005



**CHANCELLOR  
UNIVERSITY OF HAWAI'I at MĀNOA**

**OFFICE OF THE VICE CHANCELLOR FOR STUDENTS**

**CENTER FOR CAREER DEVELOPMENT  
AND STUDENT EMPLOYMENT**

Director\*  
Secretary II, SR14, #11046\*\*\*

**STUDENT EMPLOYMENT SERVICES**

Student Services Specialist, PBC, #80661  
Student Services Specialist, PBB, #81481  
Student Services Specialist, PBA, #80453T

**COOPERATIVE EDUCATION**

Assistant Specialist, S3, #88117  
Junior Specialist, S2, #82644  
Junior Specialist, S2, #82642  
Clerk-Typist II, SR8, #46550

**CAREER SERVICES**

*To be temporarily supervised by Director*  
Secretary II, SR14, #14337  
Specialist, S5, #88325  
Junior Specialist, S2, #88125  
Junior Specialist, S2, #88326  
Junior Specialist, S2, #82701  
Student Services Specialist, PBB, #81434

State of Hawai'i  
University of Hawai'i  
Office of the Chancellor  
University of Hawai'i at Mānoa

Office:

**Vice Chancellor for Students**

**Center for Career Development  
and Student Employment**

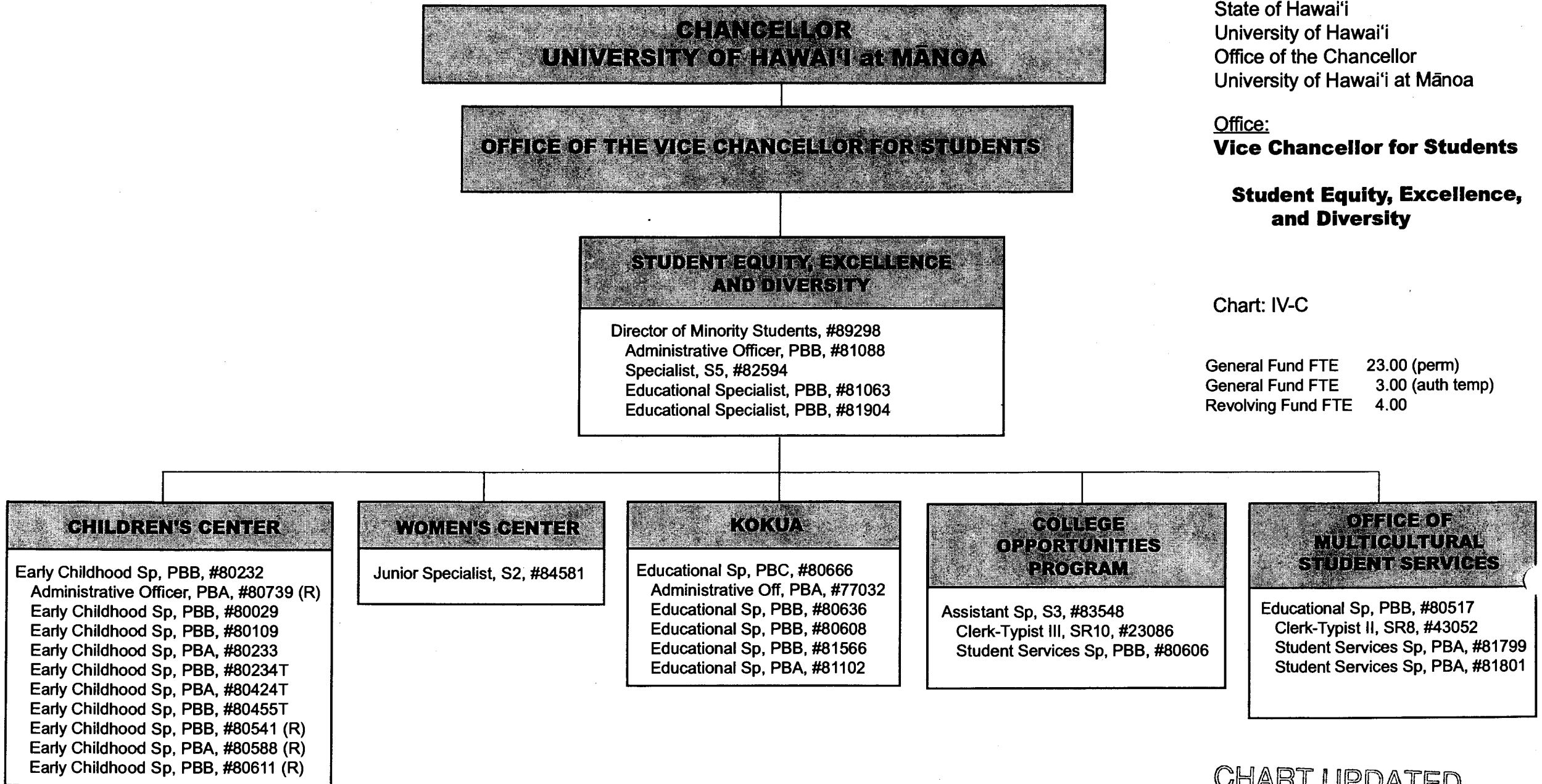
Chart: IV-B

General Fund FTE 13.00 (perm)  
General Fund FTE 1.00 (auth temp)

\*New, position number to be determined.  
Not included in position count.

\*\*\*To be redescribed

CHART UPDATED  
JUL - 1 2005  
DATE \_\_\_\_\_



State of Hawai'i  
University of Hawai'i  
Office of the Chancellor  
University of Hawai'i at Mānoa

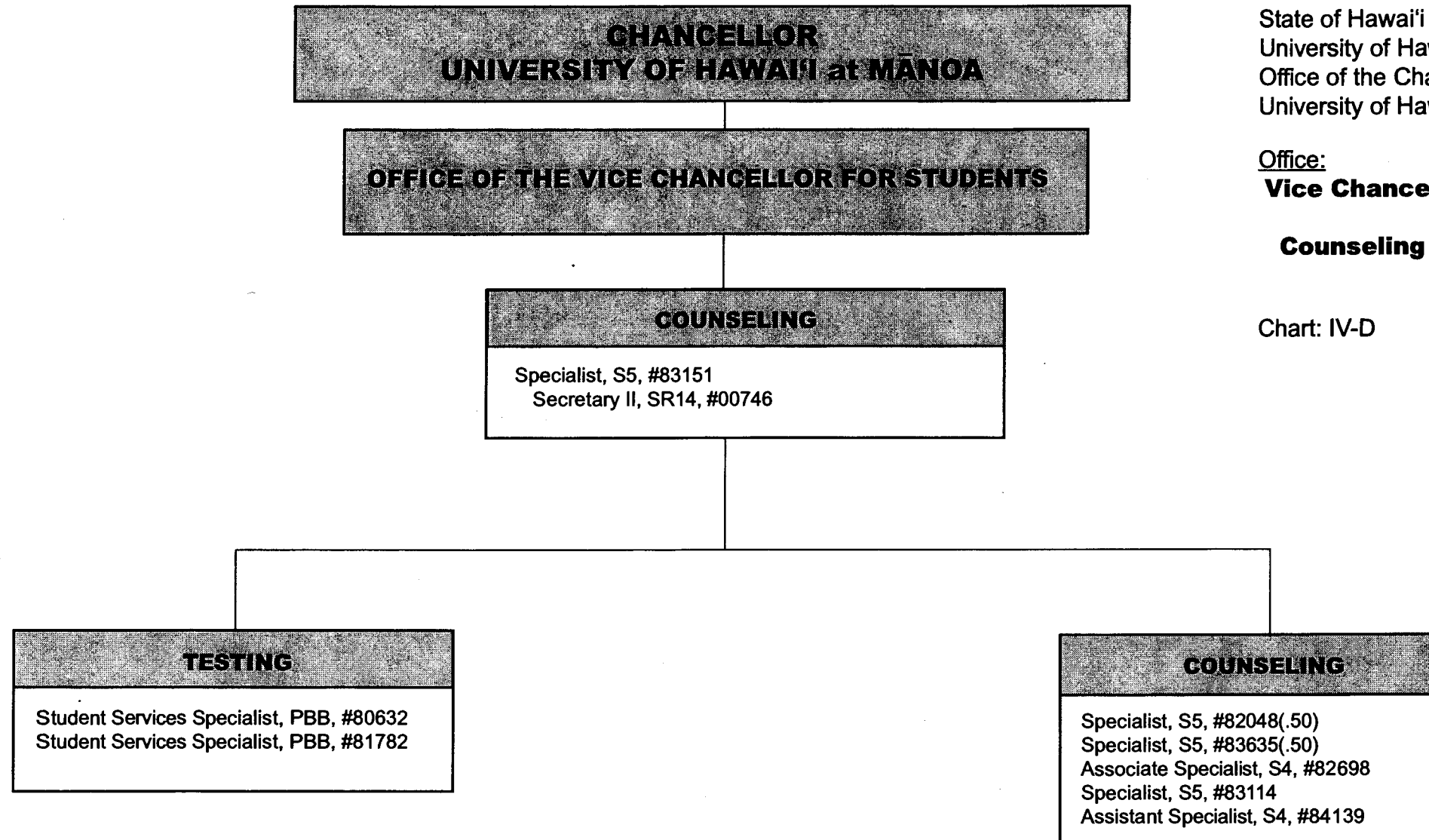
Office:  
**Vice Chancellor for Students**

**Student Equity, Excellence,  
and Diversity**

Chart: IV-C

General Fund FTE	23.00 (perm)
General Fund FTE	3.00 (auth temp)
Revolving Fund FTE	4.00

CHART UPDATED  
JUL - 1 2005  
DATE \_\_\_\_\_



State of Hawai'i  
University of Hawai'i  
Office of the Chancellor  
University of Hawai'i at Mānoa

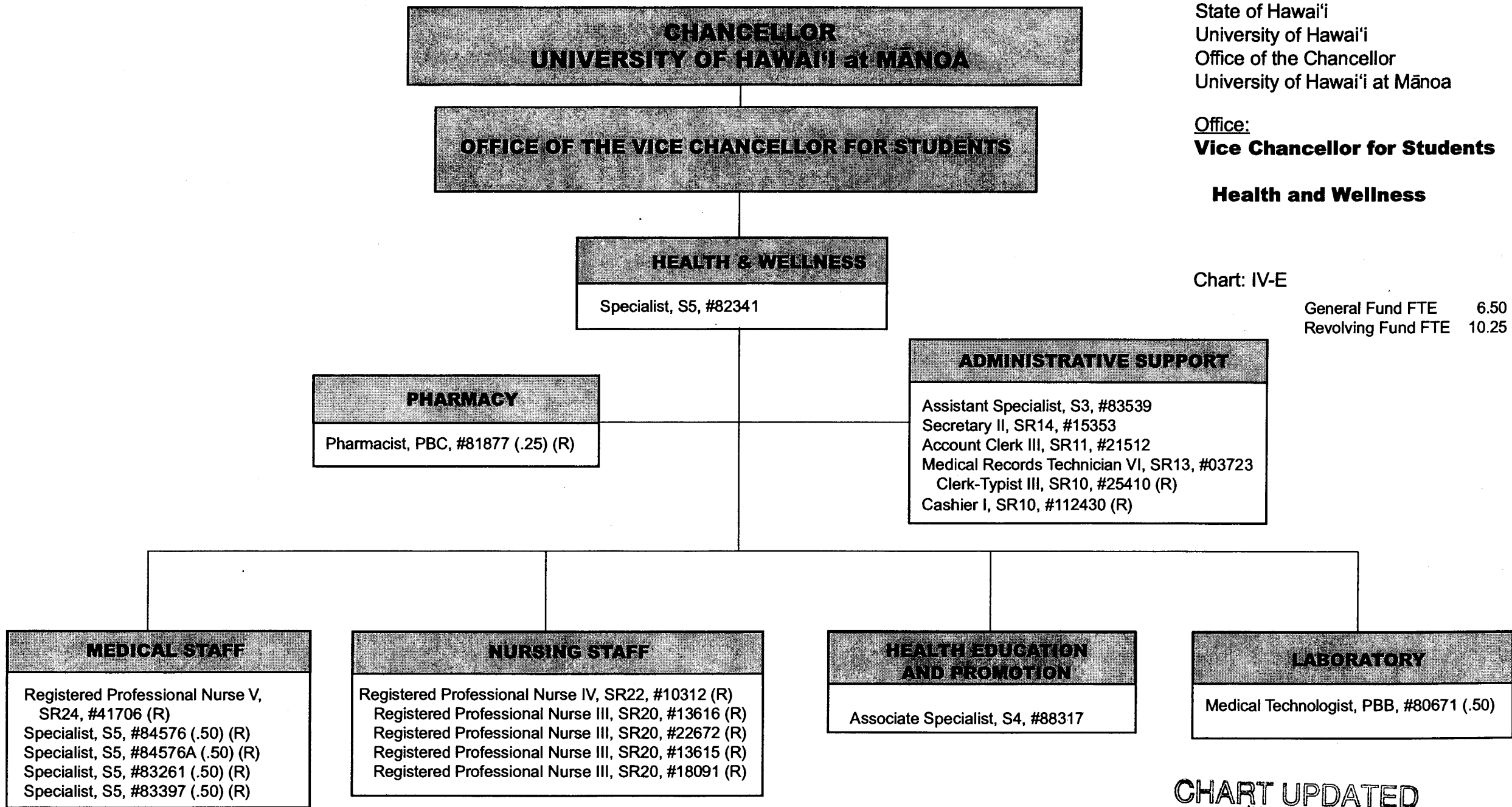
Office:  
**Vice Chancellor for Students**

**Counseling**

Chart: IV-D

General Fund FTE 8.00

CHART UPDATED  
DATE JUL - 1 2005



State of Hawai'i  
University of Hawai'i  
Office of the Chancellor  
University of Hawai'i at Mānoa

Office:  
**Vice Chancellor for Students**

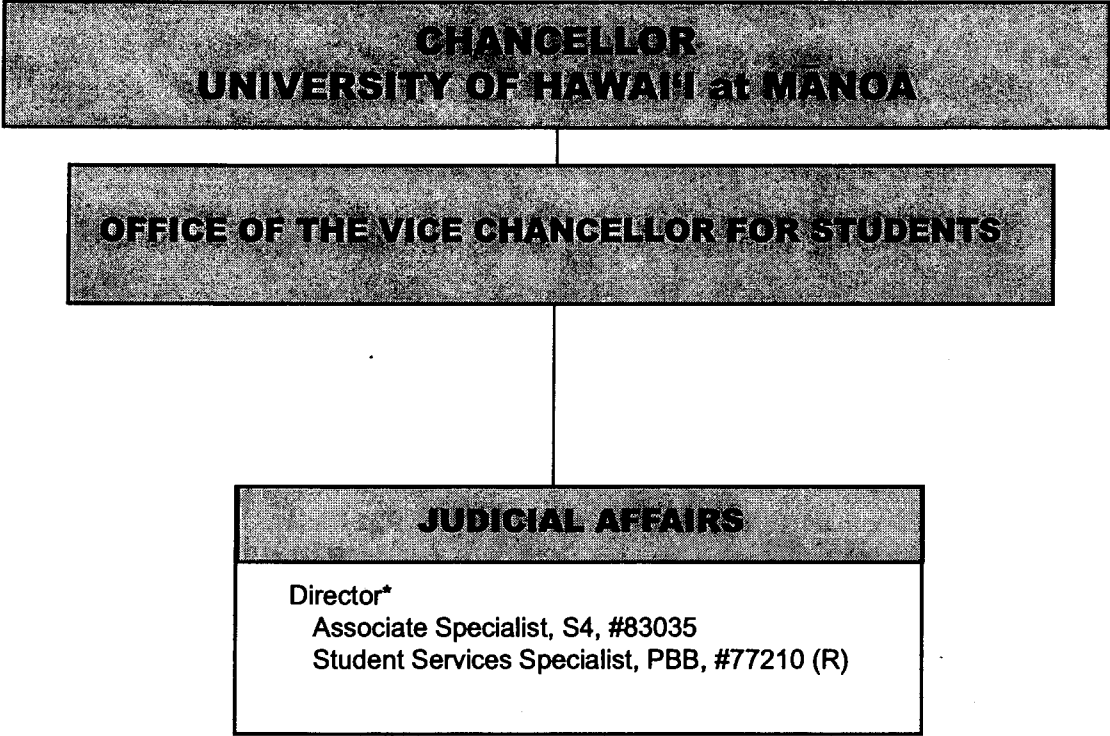
**Health and Wellness**

Chart: IV-E

General Fund FTE 6.50  
Revolving Fund FTE 10.25

**CHART UPDATED**  
JUL - 1 2005  
DATE \_\_\_\_\_





State of Hawai'i  
University of Hawai'i  
Office of the Chancellor  
University of Hawai'i at Mānoa

Office:  
**Vice Chancellor for Students**

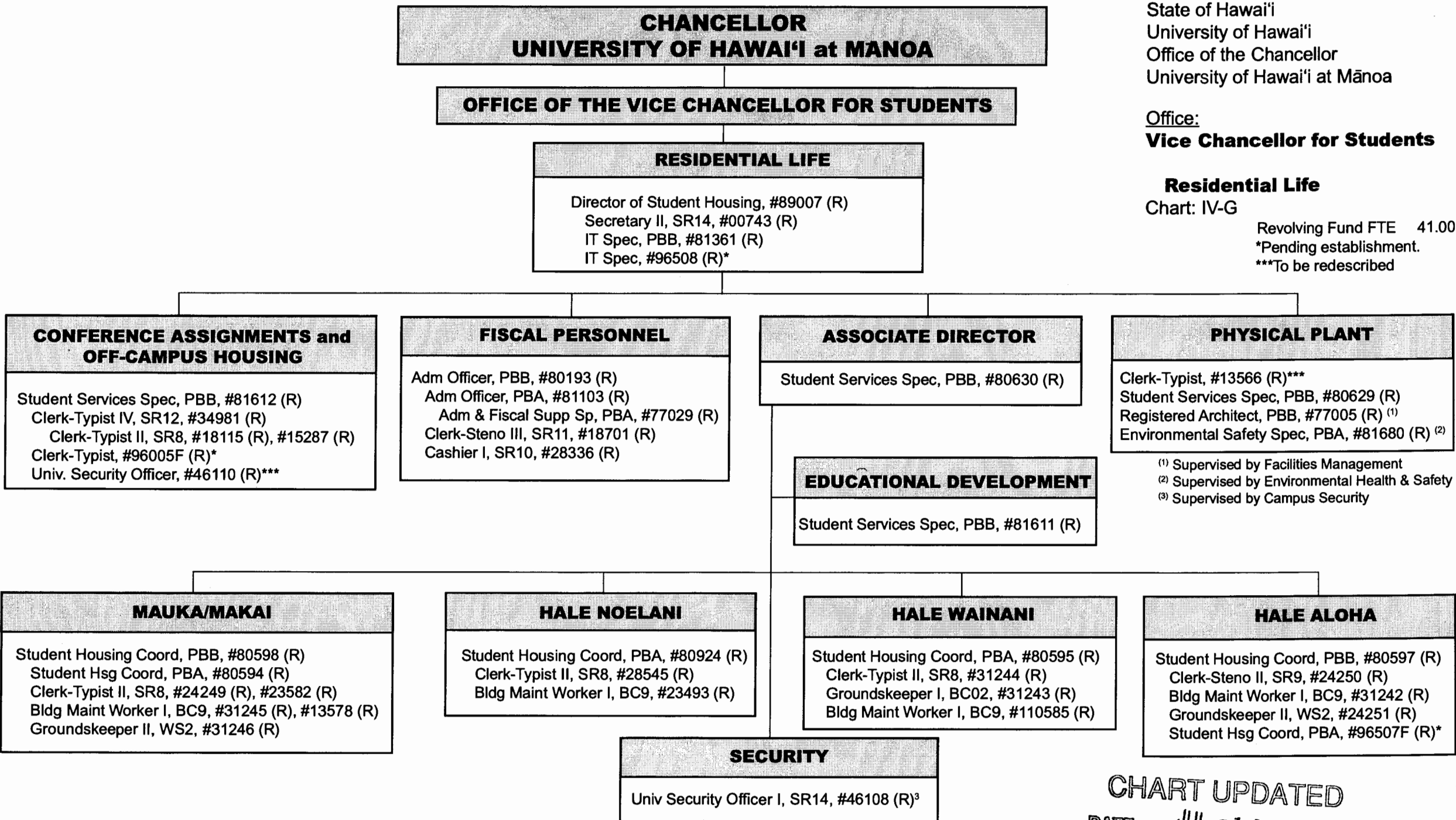
**Judicial Affairs**

Chart: IV-F

General Fund FTE	1.00
Revolving Fund FTE	1.00

\*New, position number to be determined.  
Not included in position count.

CHART UPDATED  
DATE JUL -1 2005



State of Hawai'i  
University of Hawai'i  
Office of the Chancellor  
University of Hawai'i at Mānoa

Office:  
**Vice Chancellor for Students**

**Residential Life**  
Chart: IV-G

Revolving Fund FTE 41.00 .  
\*Pending establishment.  
\*\*\*To be redescribed

CHART UPDATED  
DATE JUL -1 2005