

Position Organization Chart

Chart I

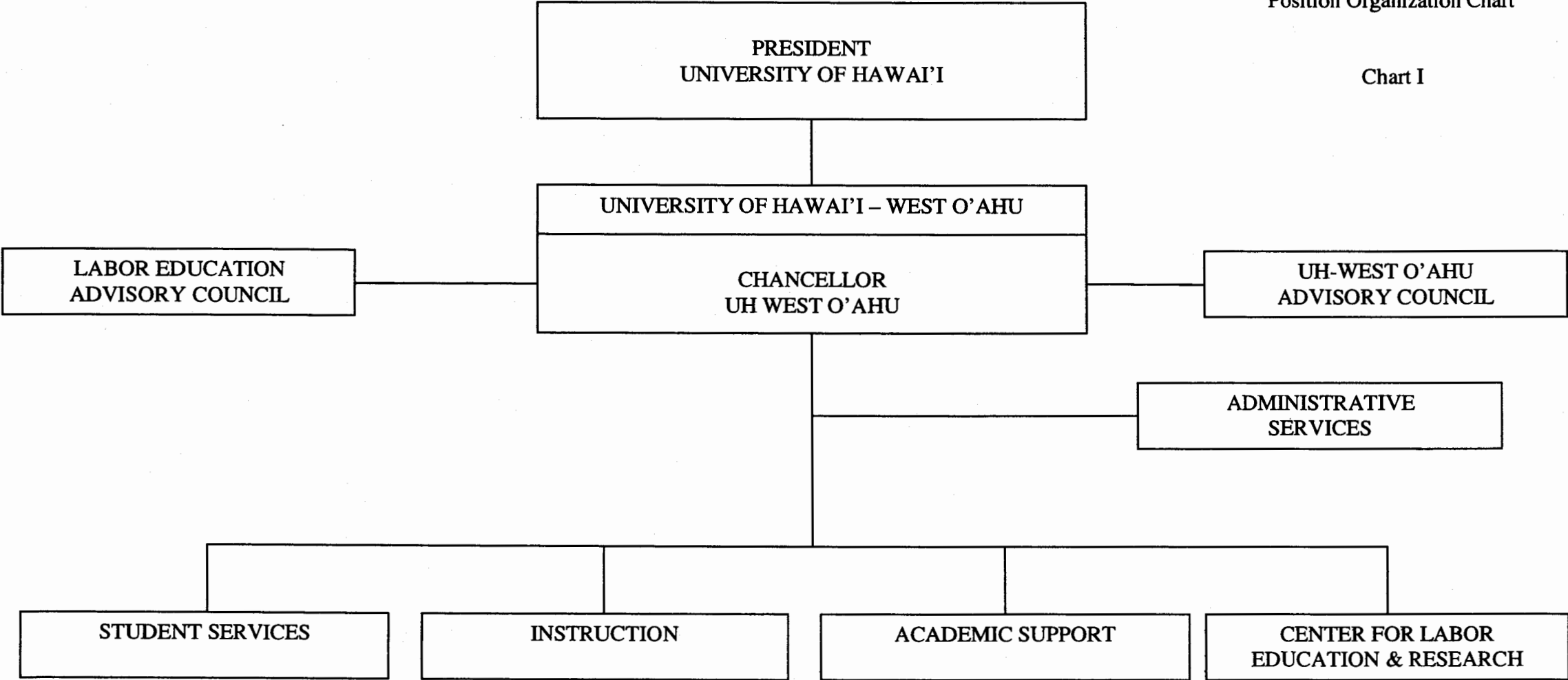


CHART UPDATED
DATE JUL - 1 2005

State of Hawai'i
University of Hawai'i
University of Hawai'i - West O'ahu
Office of the Chancellor

Position Organization Chart

Chart II

General Funds 4.00

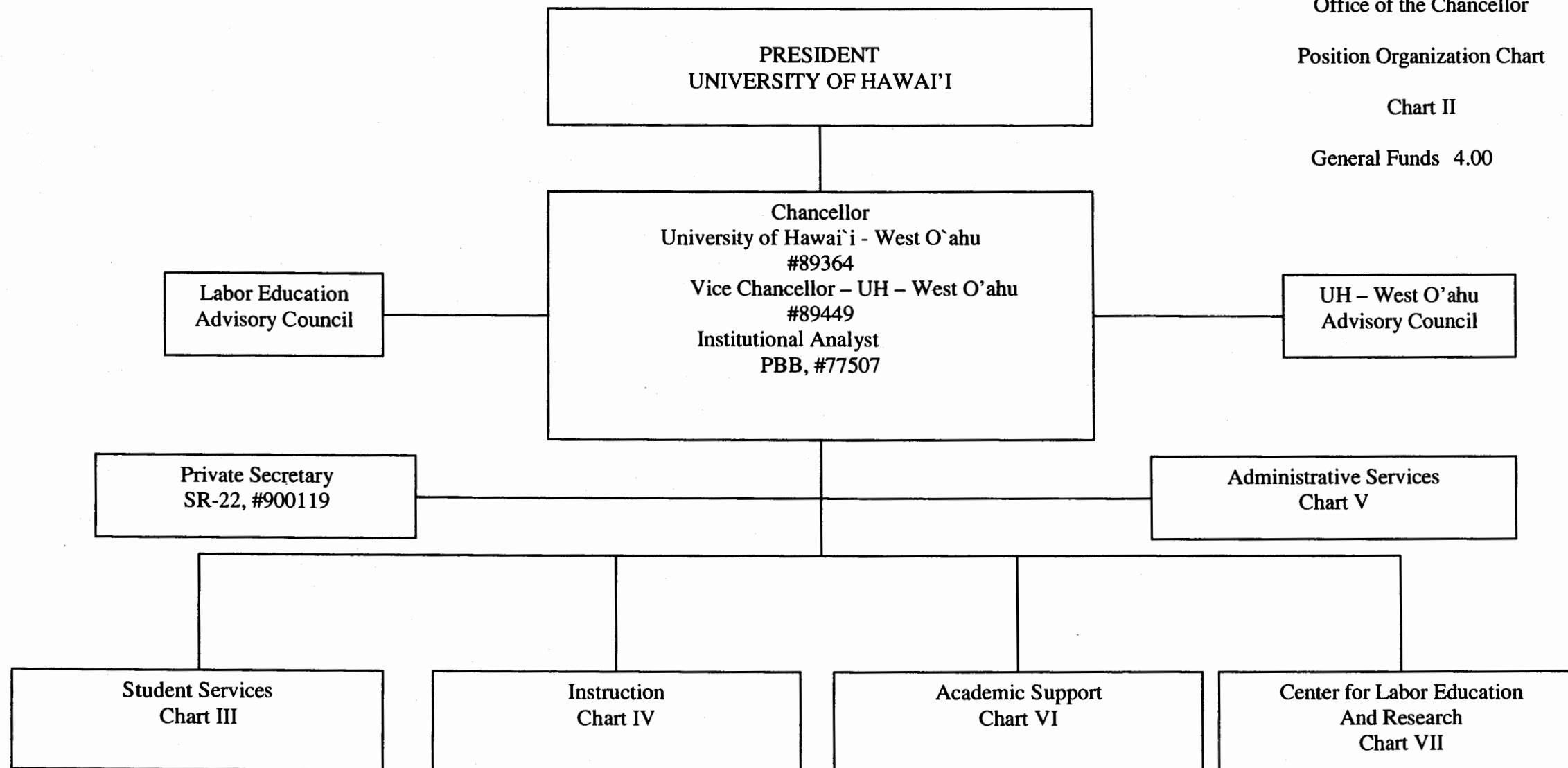


CHART UPDATED
DATE JUL - 1 2005

State of Hawai'i
University of Hawai'i
University of Hawai'i - West O'ahu
Student Services

Position Organization Chart

Chart III

General Funds 8.00

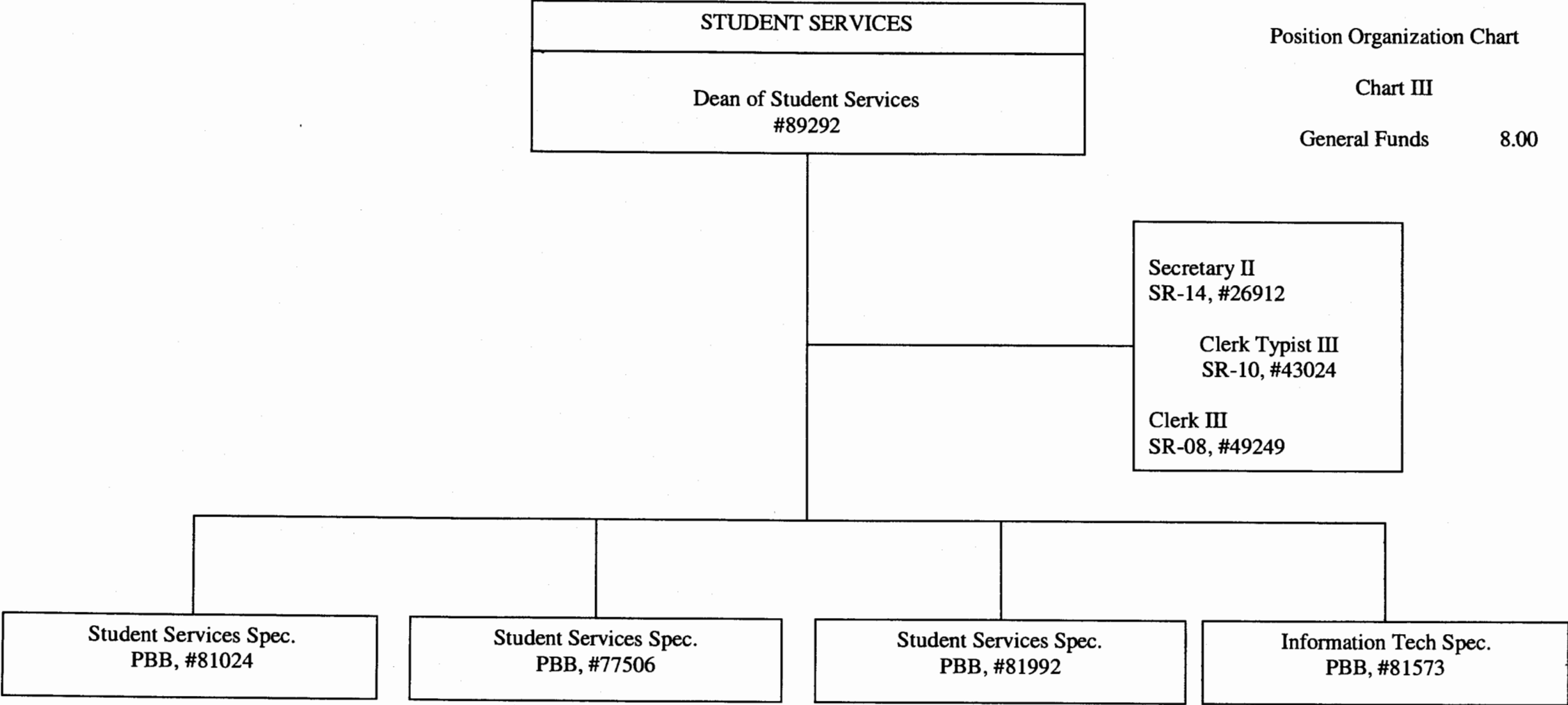


CHART UPDATED
DATE JUL - 1 2005

State of Hawai'i
University of Hawai'i
University of Hawai'i - West O'ahu
Instruction

Position Organization Chart

Chart IV

General Funds 29.00

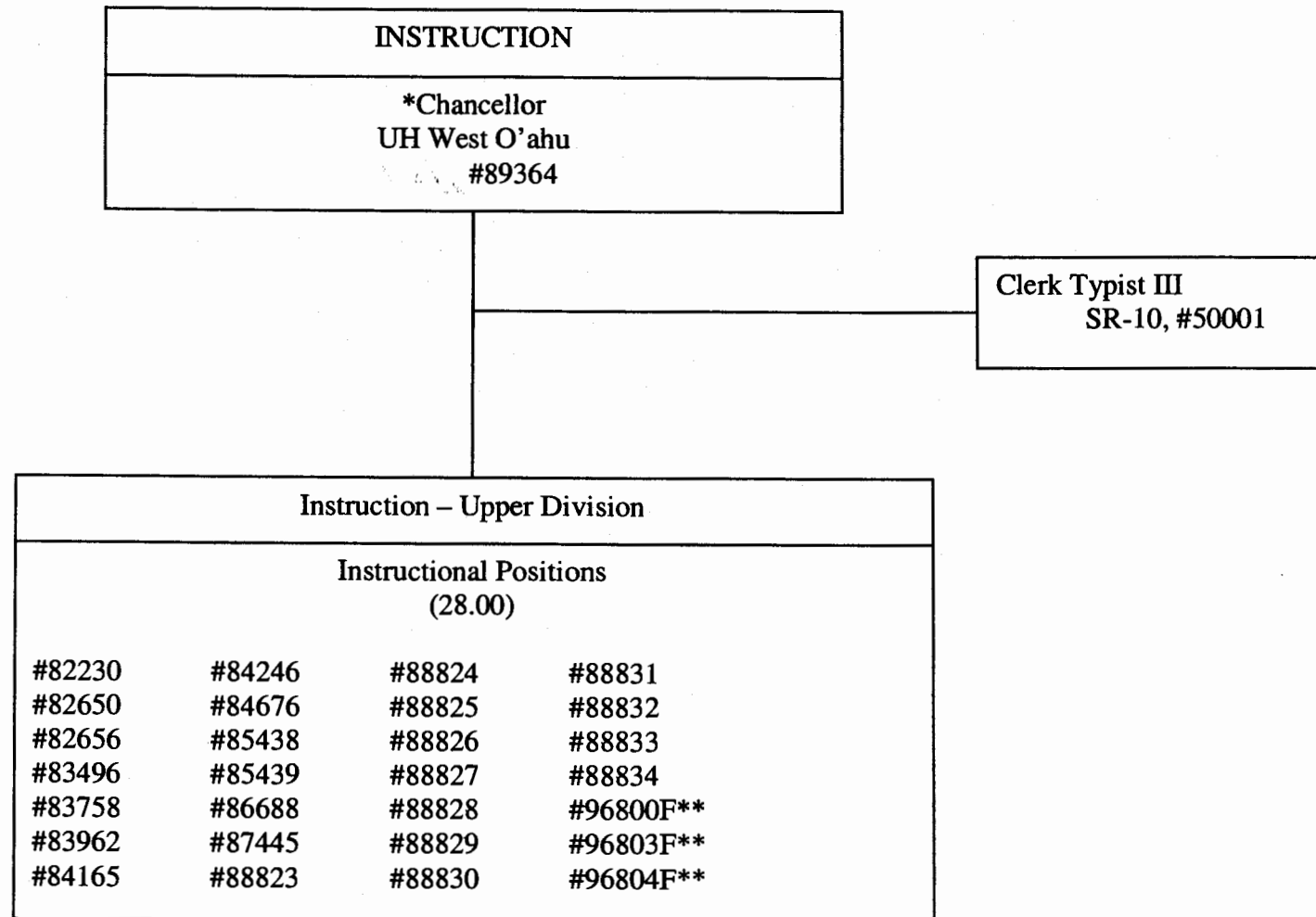


CHART UPDATED
DATE JUL - 1 2005

*Position count not included on this page

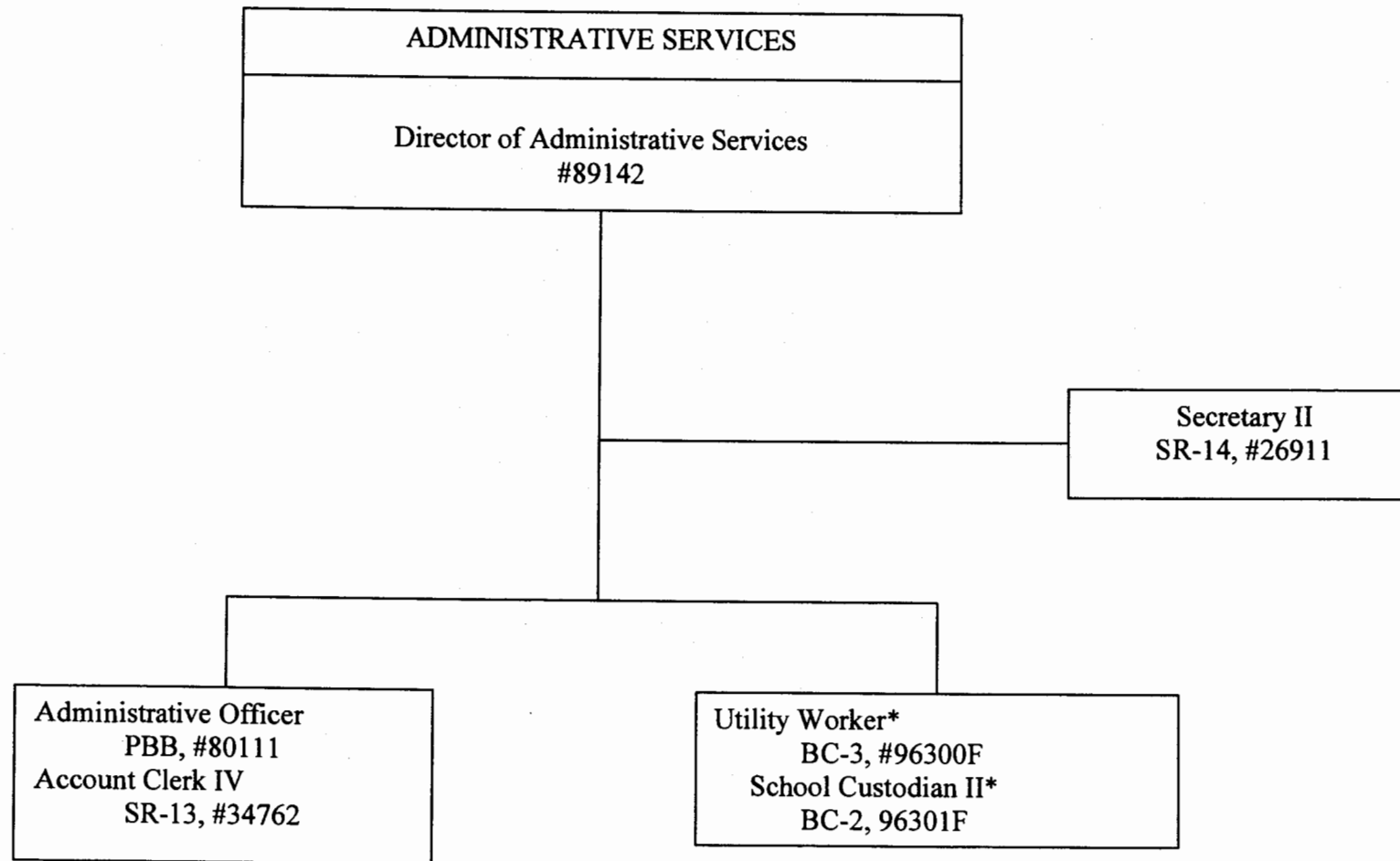
**Faculty positions to be established

State of Hawai'i
University of Hawai'i
University of Hawai'i - West O'ahu
Administrative Services

Position Organization Chart

Chart V

General Funds 6.00



*Positions to be established

CHART UPDATED
DATE JUL - 1 2005

State of Hawai'i
University of Hawai'i
University of Hawai'i - West O'ahu
Academic Support

Position Organization Chart

Chart VI

General Funds 2.50

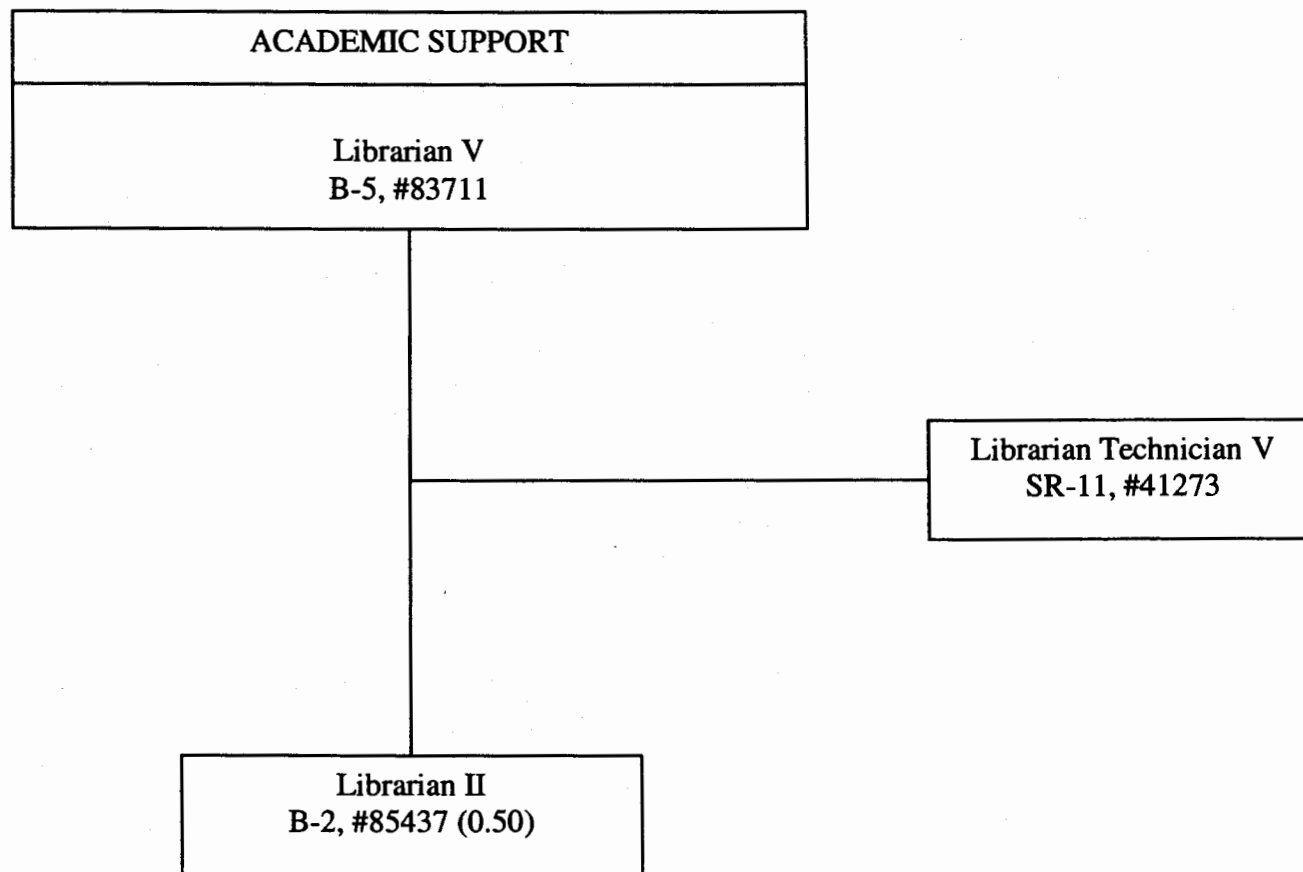


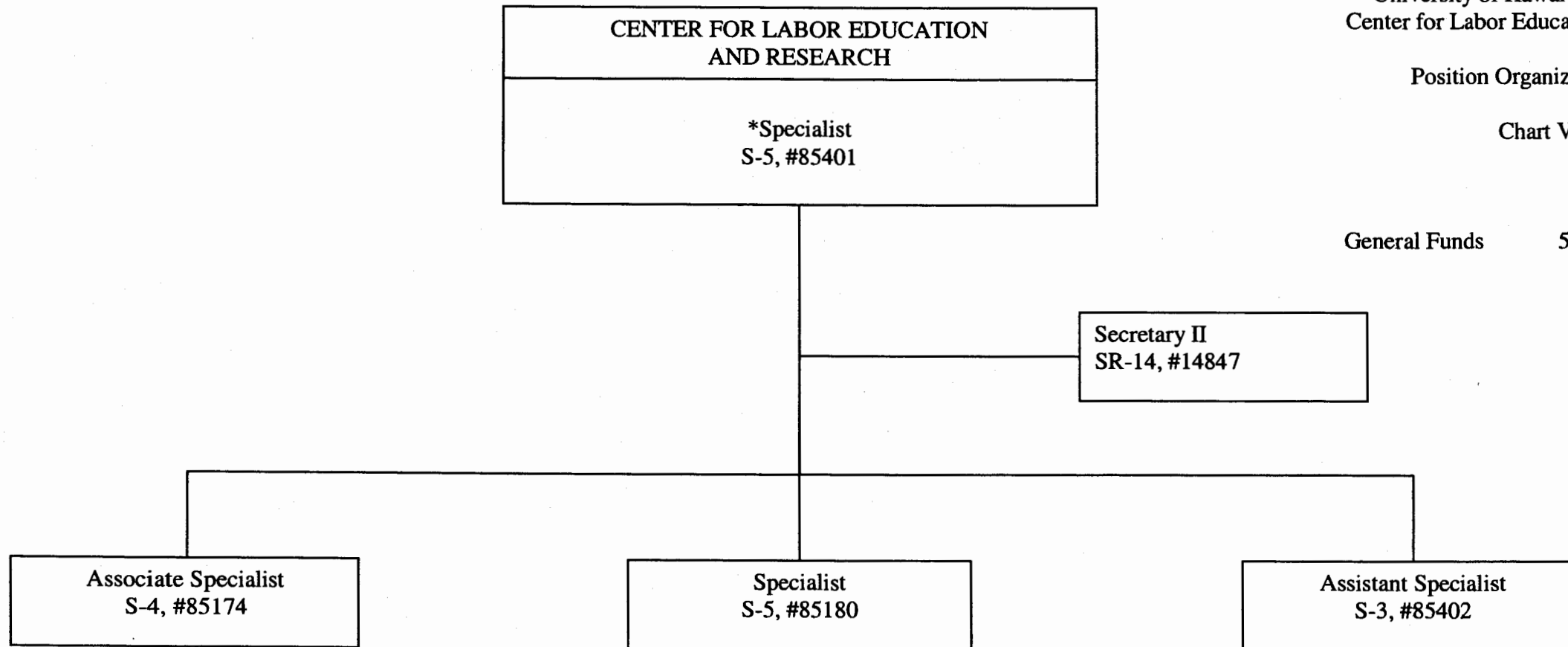
CHART UPDATED
DATE JUL - 1 2005

State of Hawai'i
University of Hawai'i
University of Hawai'i - West O'ahu
Center for Labor Education and Research

Position Organization Chart

Chart VII

General Funds 5.00



*Director

CHART UPDATED
DATE JUL - 1 2005