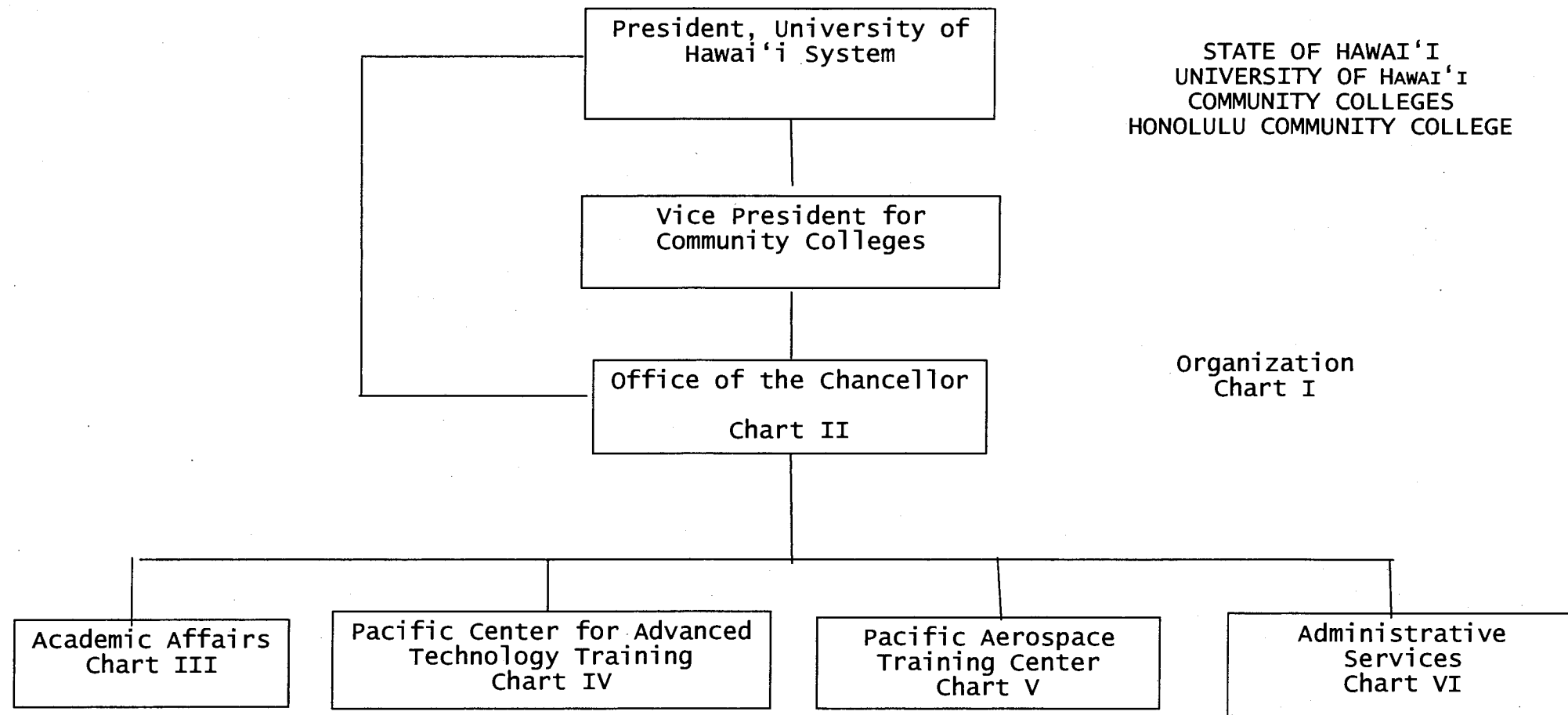



STATE OF HAWAI'I
UNIVERSITY OF HAWAI'I
COMMUNITY COLLEGES
HONOLULU COMMUNITY COLLEGE



APPROVED:

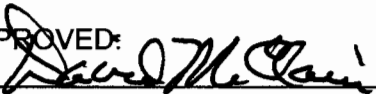

David McClain, President
University of Hawai'i System

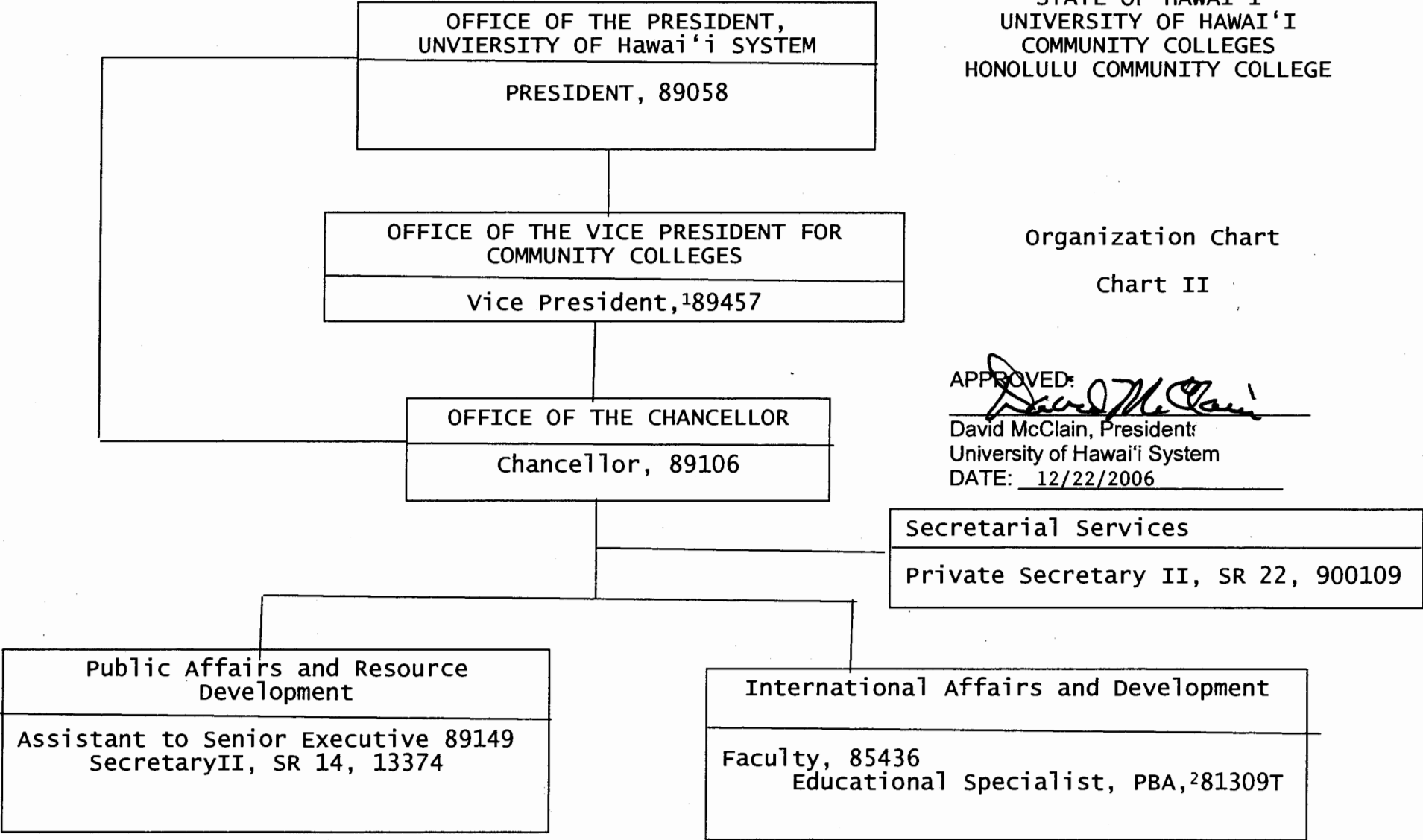
DATE: 12/22/2006

General Fund	Perm	Temp
(B) Special Funds	312.00	7.00
	19.00	

STATE OF HAWAI'I
UNIVERSITY OF HAWAI'I
COMMUNITY COLLEGES
HONOLULU COMMUNITY COLLEGE

Organization Chart
Chart II

APPROVED: 
David McClain, President
University of Hawai'i System
DATE: 12/22/2006



1 Excluded from Position Count
2 Temporary position

General Fund	Perm 5.00	Temp 1.00
--------------	--------------	--------------

STATE OF HAWAII
UNIVERSITY OF HAWAII
COMMUNITY COLLEGES
HONOLULU COMMUNITY COLLEGE
ACADEMIC AFFAIRS

Organization Chart

Chart III

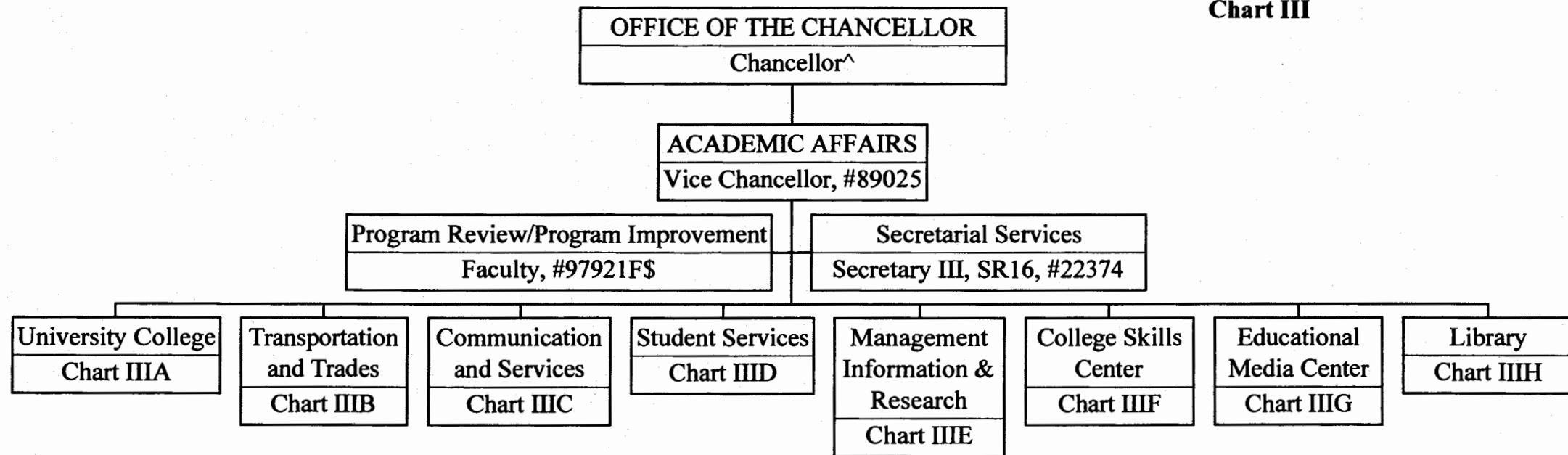


CHART UPDATED
JUL - 1 2006
DATE _____

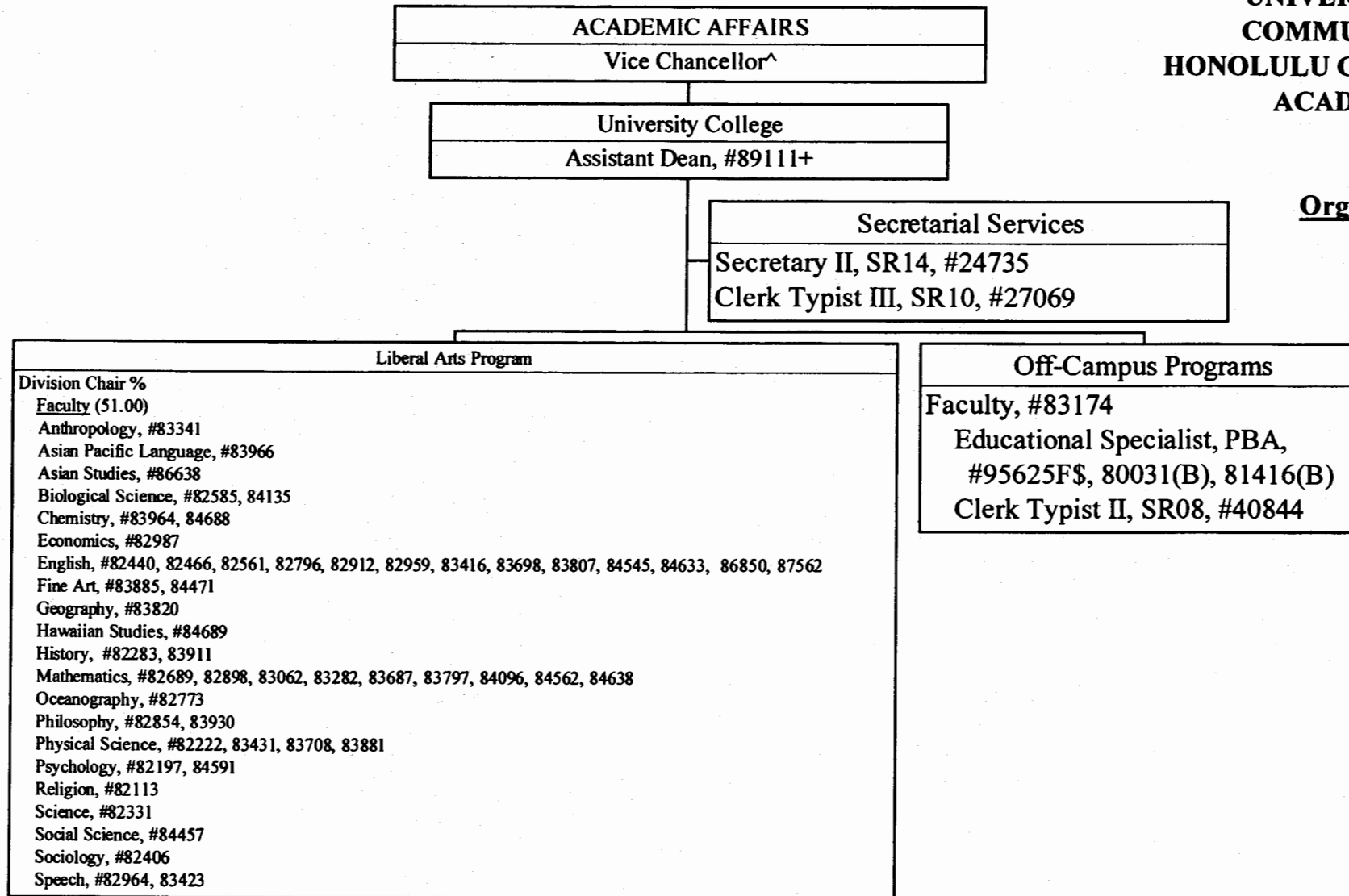
^ Excluded from position count this chart
\$ To be established

General Fund Perm
3.00

**STATE OF HAWAII
UNIVERSITY OF HAWAII
COMMUNITY COLLEGES
HONOLULU COMMUNITY COLLEGE
ACADEMIC AFFAIRS**

Organization Chart

Chart IIIA



- ^ Excluded from position count this chart
 + To be redescribed
 % Division Chair is appointed from any faculty position in the College.
 Multiple Division Chairs may be appointed but each position in the
 Division has only one immediate supervisor.
 \$ To be established

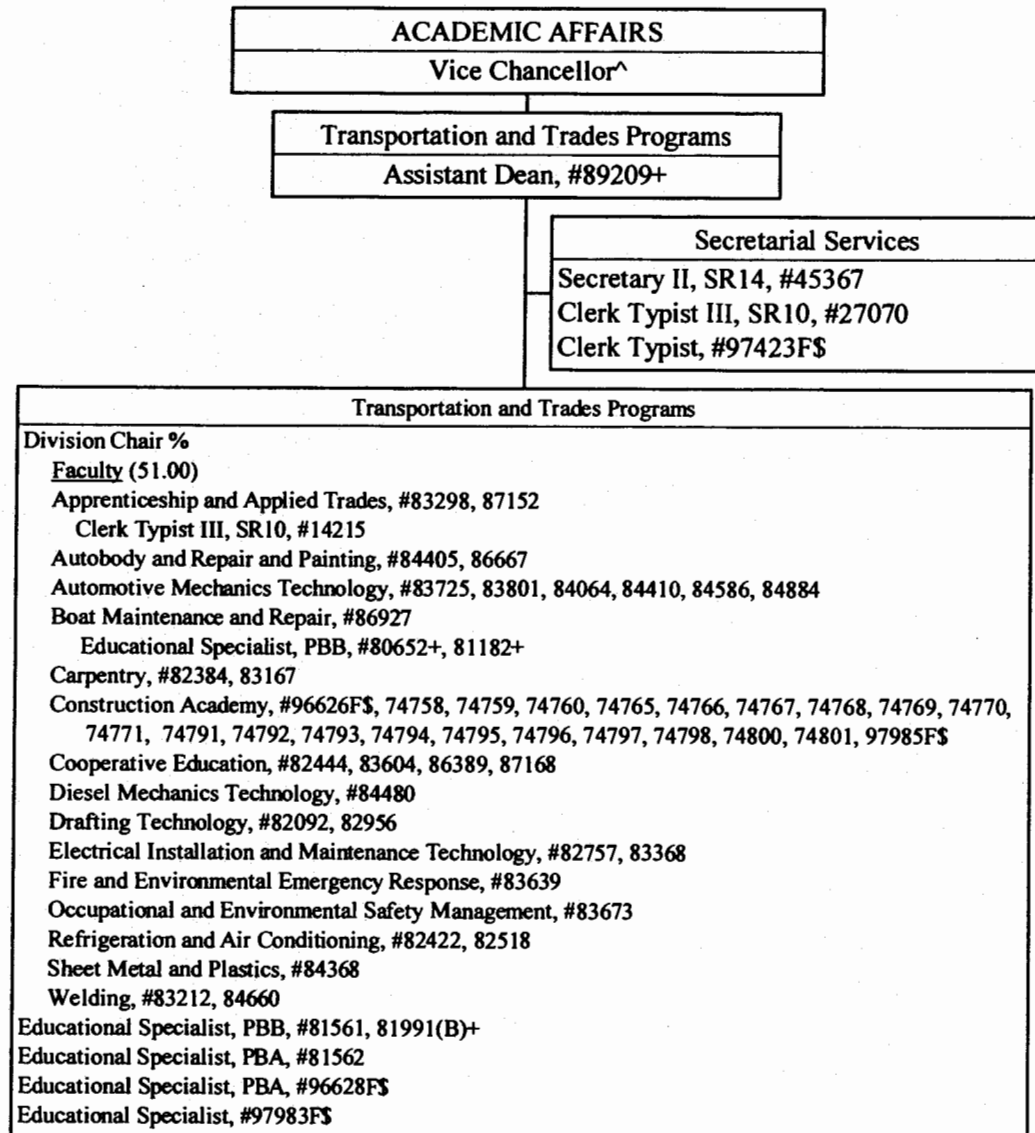
	<u>Perm</u>
General Fund	57.00
(B) Special Funds	2.00

CHART UPDATED
 DATE JUL - 1 2006

**STATE OF HAWAII
UNIVERSITY OF HAWAII
COMMUNITY COLLEGES
HONOLULU COMMUNITY COLLEGE
ACADEMIC AFFAIRS**

Organization Chart

Chart IIIB

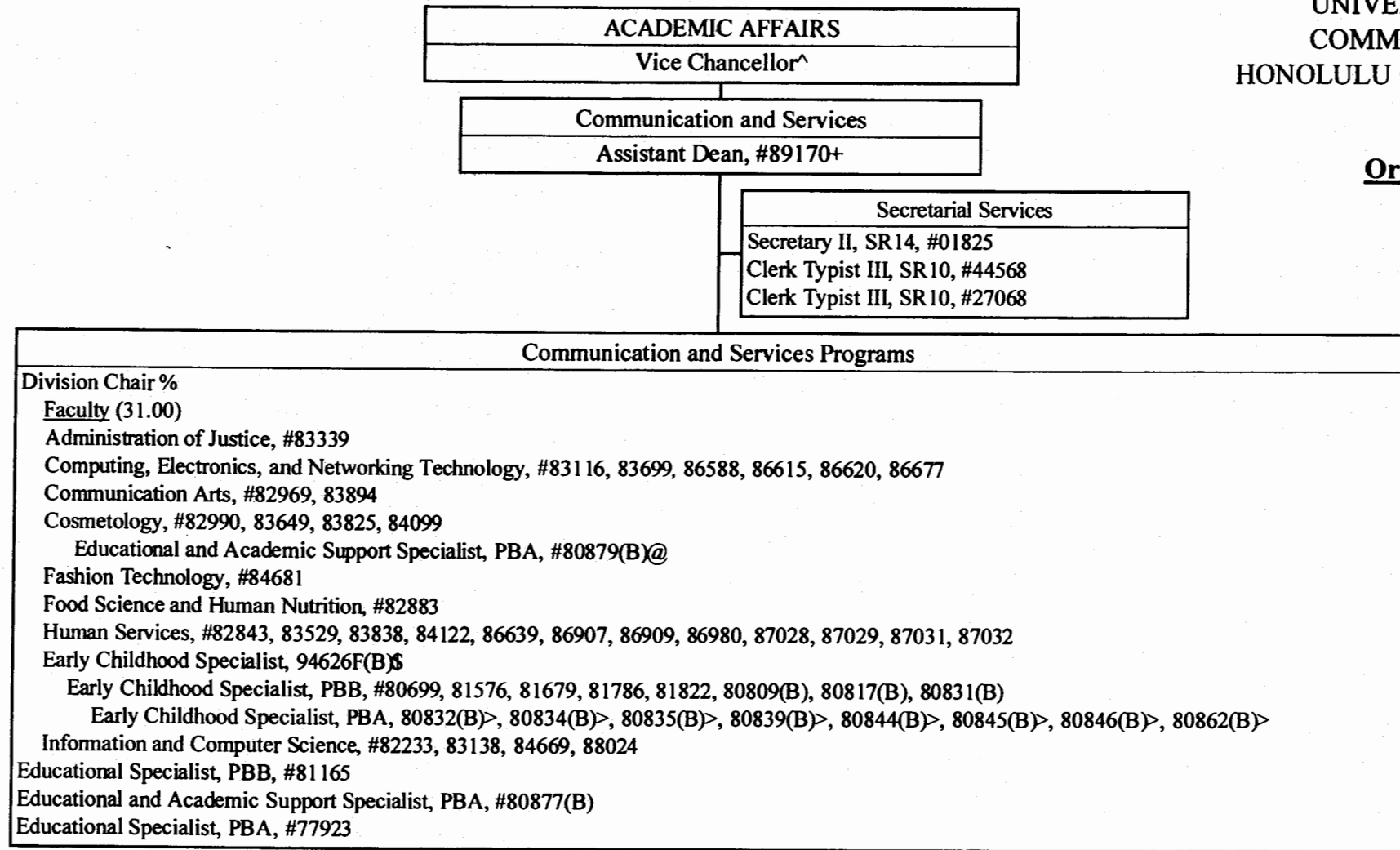


- ^ Excluded from position count this chart
- + To be redescribed
- % Division Chair is appointed from any faculty position in the College.
Multiple Division Chairs may be appointed but each position in the
Division has only one immediate supervisor.
- \$ To be established

CHART UPDATED
DATE JUL - 1 2006

	<u>Perm</u>
General Fund	62.00
(B) Special Funds	1.00

STATE OF HAWAII
UNIVERSITY OF HAWAII
COMMUNITY COLLEGES
HONOLULU COMMUNITY COLLEGE



Organization Chart

Chart IIIC

- ^ Excluded from position count this chart
- + To be redescribed
- % Division Chair is appointed from any faculty position in the College.
Multiple Division Chairs may be appointed but each position in the
Division has only one supervisor.
- @ Supervised by one of the faculty positions
- \$ To be established
- > Supervised by one of the senior APT positions

CHART UPDATED
JUL - 1 2006
DATE _____

	<u>Perm</u>
General Fund	42.00
(B) Special Funds	14.00

STATE OF HAWAII
UNIVERSITY OF HAWAII
COMMUNITY COLLEGES
HONOLULU COMMUNITY COLLEGE
ACADEMIC AFFAIRS

Organization Chart

Chart IIID

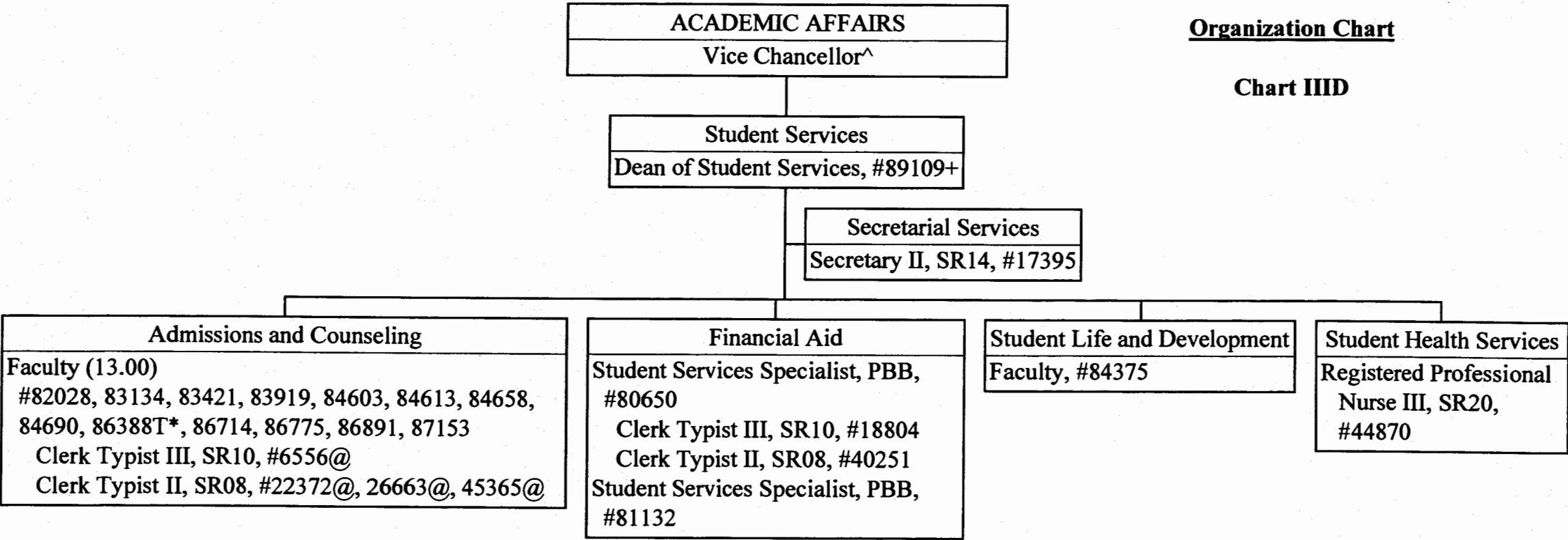


CHART UPDATED

DATE JUL - 1 2006

Perm Temp

General Fund 24.00 1.00

^ Excluded from position count this chart

* Temporary Position

+ To be redescribed

@ Supervised by one of the faculty positions

STATE OF HAWAII
UNIVERSITY OF HAWAII
COMMUNITY COLLEGES
HONOLULU COMMUNITY COLLEGE
ACADEMIC AFFAIRS

Organization Chart

Chart III E

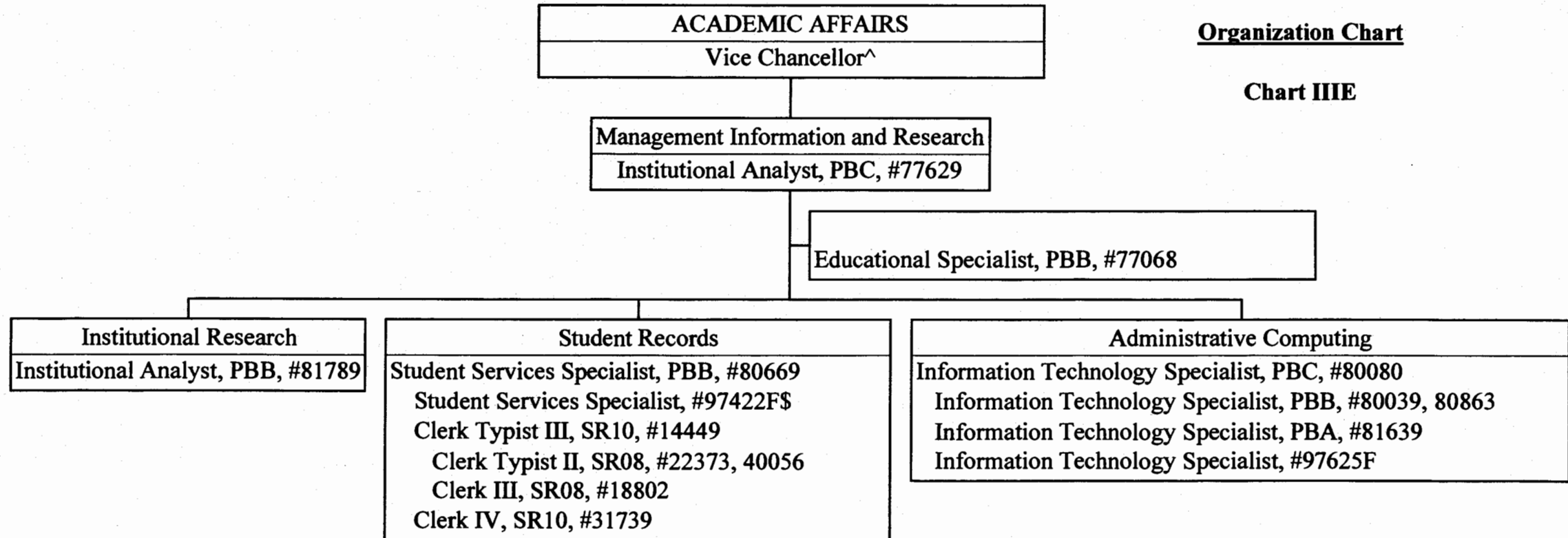


CHART UPDATED

DATE _____

^ Excluded from position count this chart

+ To be redescribed

\$ To be established

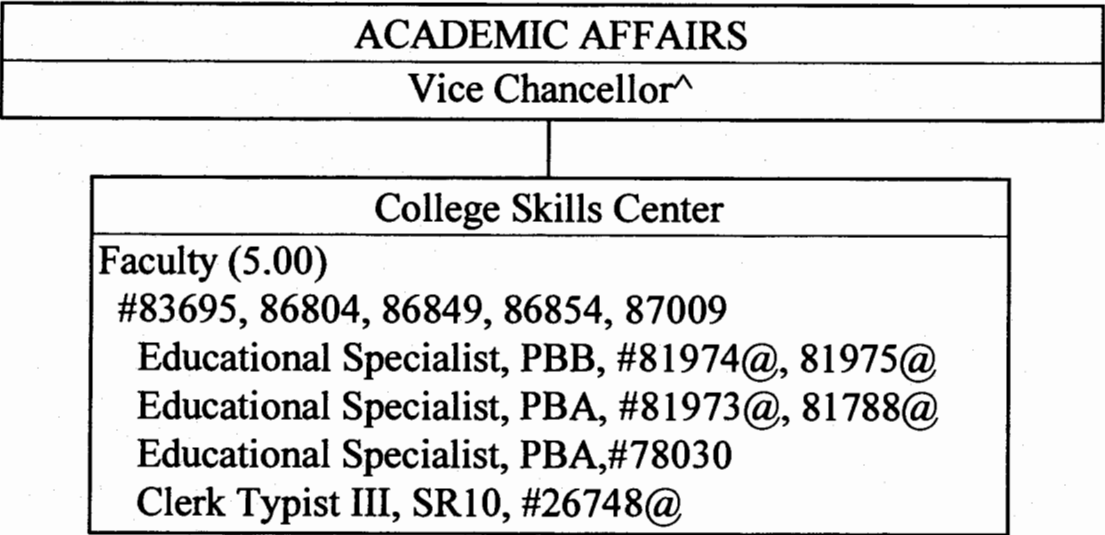
Perm

General Fund 15.00

STATE OF HAWAII
UNIVERSITY OF HAWAII
COMMUNITY COLLEGES
HONOLULU COMMUNITY COLLEGE
ACADEMIC AFFAIRS

Organization Chart

Chart IIIF



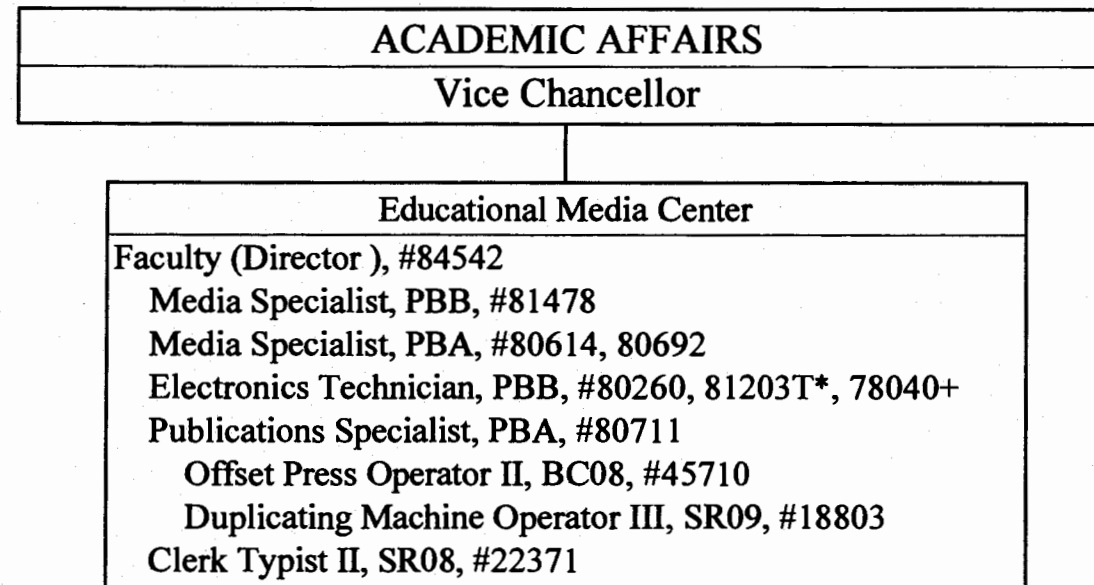
^ Excluded from position count this chart
@ Supervised by one of the faculty positions

CHART UPDATED
DATE JUL - 1 2006
Perm
General Fund 11.00

**STATE OF HAWAII
UNIVERSITY OF HAWAII
COMMUNITY COLLEGES
HONOLULU COMMUNITY COLLEGE
ACADEMIC AFFAIRS**

Organization Chart

Chart IIIG



- ^ Excluded from position count this chart
- * Temporary Position
- + To be redescribed

CHART UPDATED

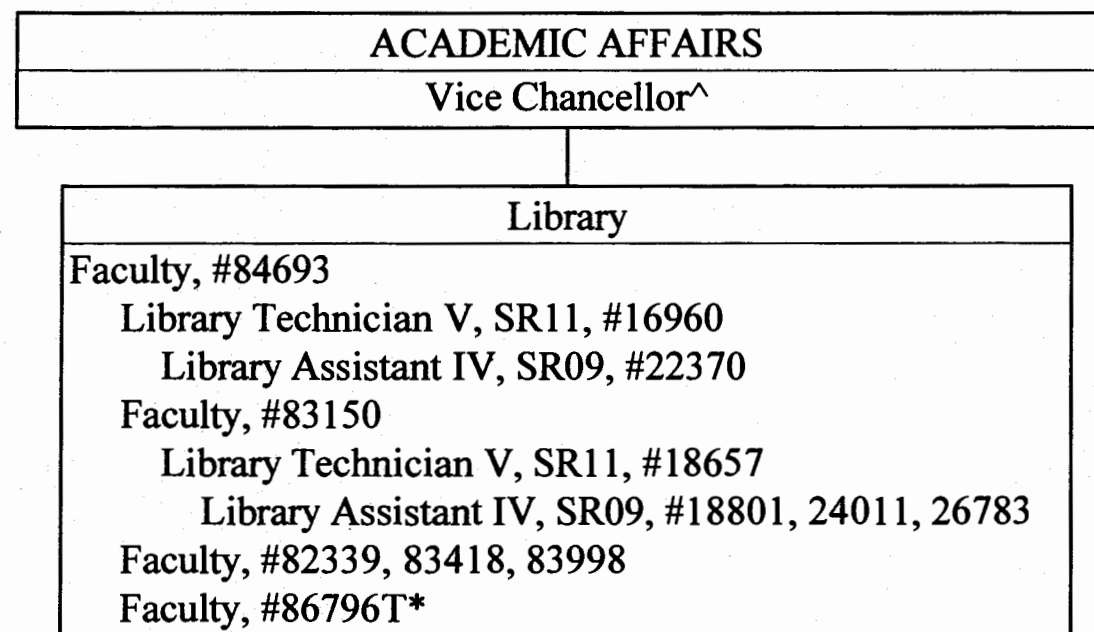
DATE JUL - 1 2006

	<u>Perm</u>	<u>Temp</u>
General Fund	10.00	1.00

**STATE OF HAWAII
UNIVERSITY OF HAWAII
COMMUNITY COLLEGES
HONOLULU COMMUNITY COLLEGE
ACADEMIC AFFAIRS**

Organization Chart

Chart IIIH



[^] Excluded from position count this chart

* Temporary Position

	<u>Perm</u>	<u>Temp</u>
General Fund	11.00	1.00

CHART UPDATED

JUL - 1 2006

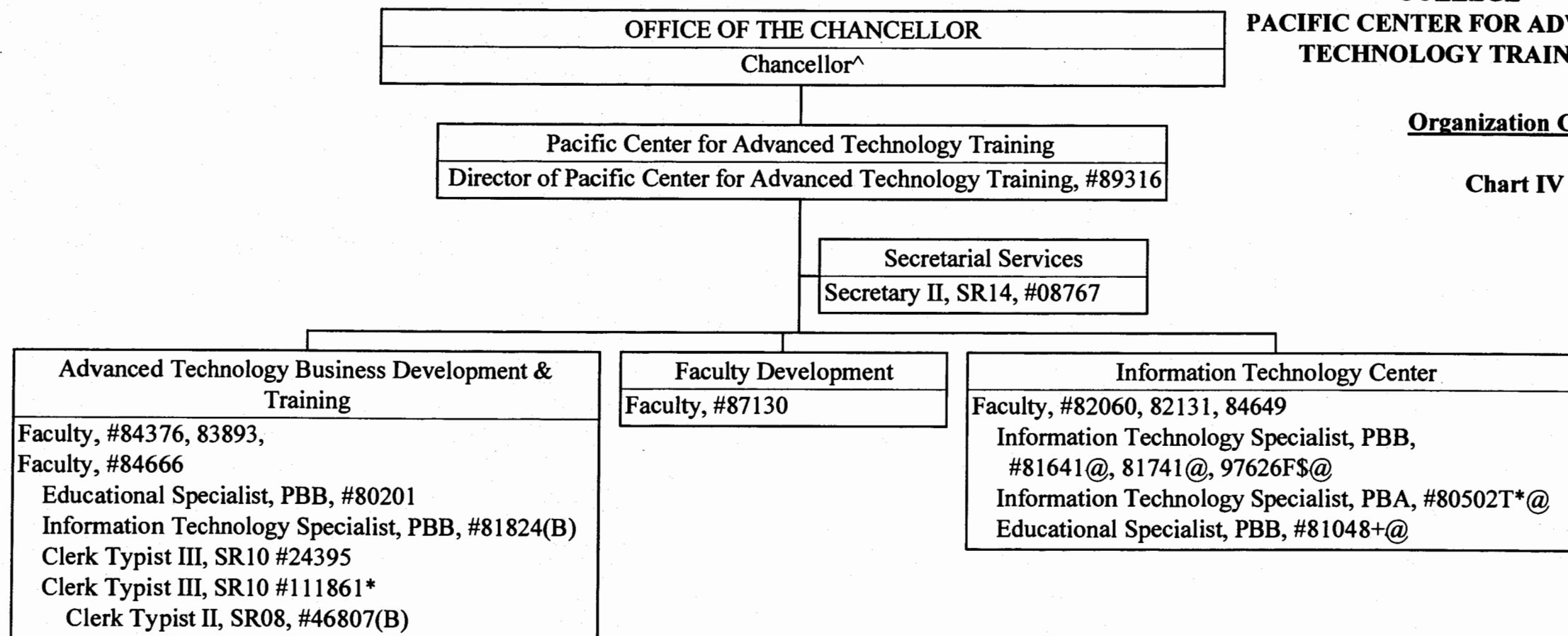
DATE _____

STATE OF HAWAII
UNIVERSITY OF HAWAII
COMMUNITY COLLEGES
HONOLULU COMMUNITY
COLLEGE

PACIFIC CENTER FOR ADVANCED
TECHNOLOGY TRAINING

Organization Chart

Chart IV



- ^ Excluded from position count this chart
* Temporary Position
+ To be redescribed
@ Supervised by one of the faculty positions

CHART UPDATED

DATE JUL - 1 2006

	Perm	Temp
General Fund	15.00	2.00
(B) Special Funds	2.00	

STATE OF HAWAII
UNIVERSITY OF HAWAII
COMMUNITY COLLEGES
HONOLULU COMMUNITY COLLEGE
PACIFIC AEROSPACE TRAINING CENTER

Organization Chart

Chart V

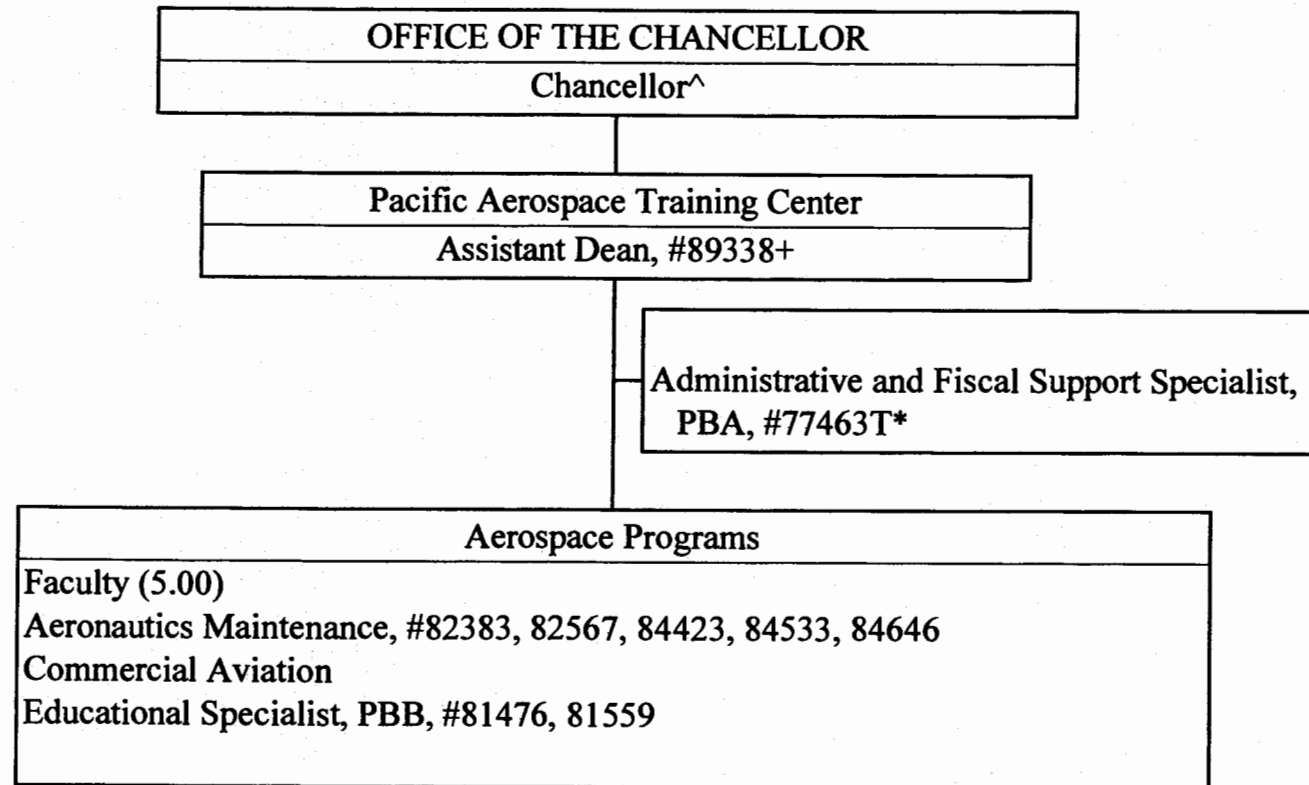


CHART UPDATED

DATE JUL - 1 2006

^ Excluded from position count this chart

+ To be redescribed

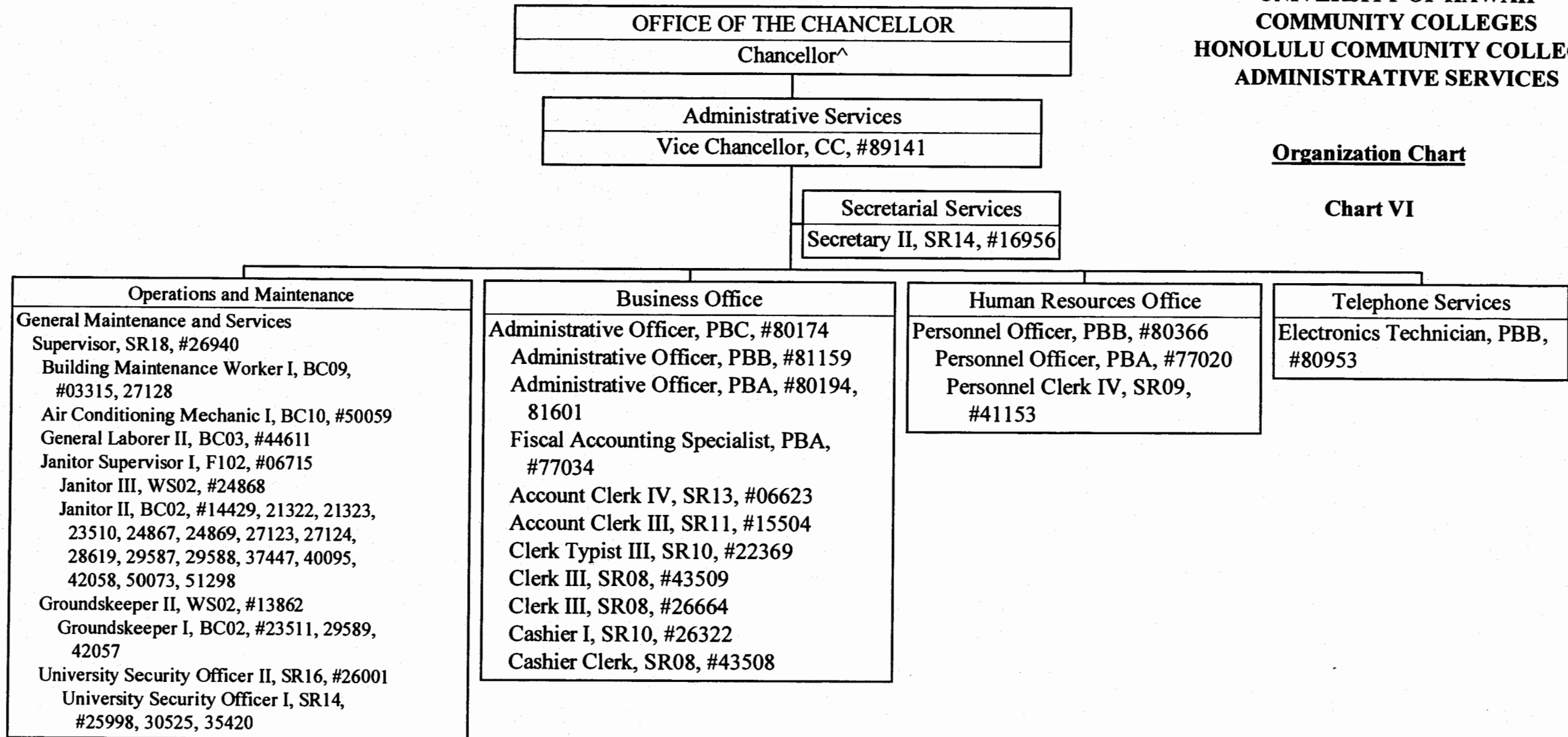
\$ To be established

	<u>Perm</u>	<u>Temp</u>
General Fund	8.00	1.00

**STATE OF HAWAII
UNIVERSITY OF HAWAII
COMMUNITY COLLEGES
HONOLULU COMMUNITY COLLEGE
ADMINISTRATIVE SERVICES**

Organization Chart

Chart VI



^ Excluded from position count this chart
 \$ To be established

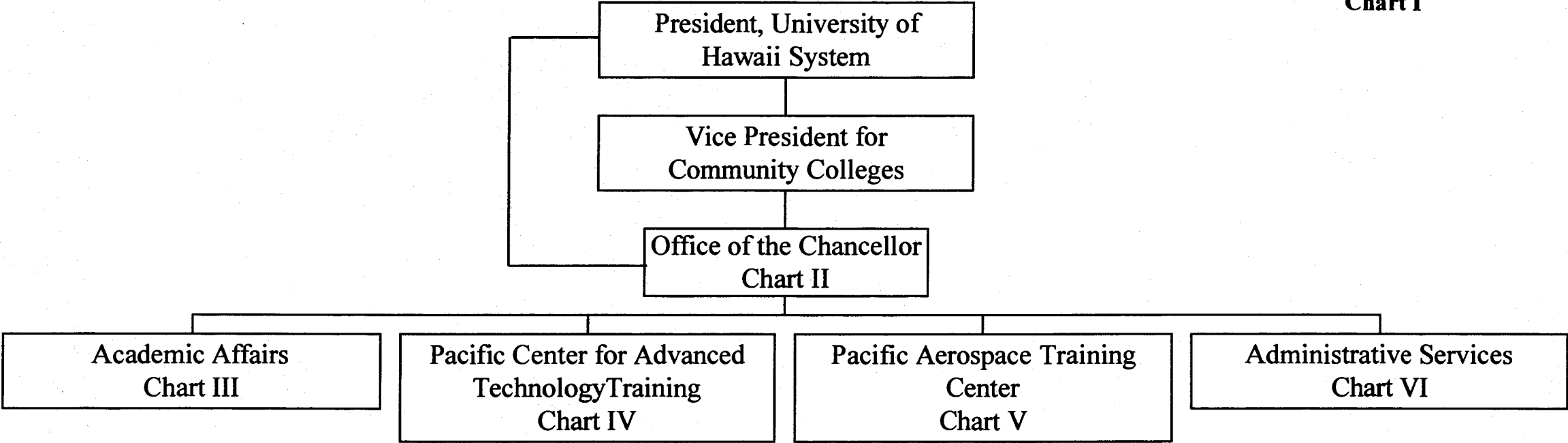
General Fund Perm
 49.00

CHART UPDATED
 DATE JUL - 1 2006

STATE OF HAWAII
UNIVERSITY OF HAWAII
COMMUNITY COLLEGES
HONOLULU COMMUNITY COLLEGE

Organization Chart

Chart I



SUPERSEDED
Date DEC 22 2006

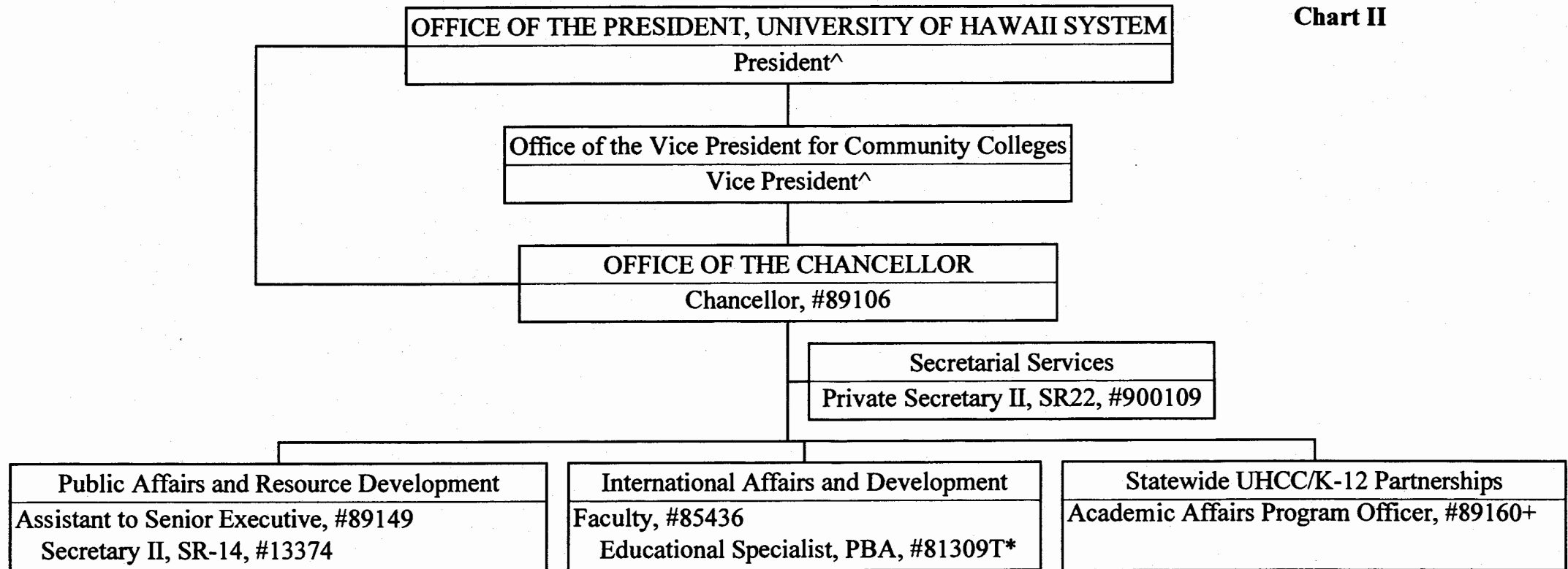
	<u>Perm</u>	<u>Temp</u>
General Fund	313.00	7.00
(B) Special Funds	19.00	

CHART UPDATED
DATE JUL - 1 2006

STATE OF HAWAII
UNIVERSITY OF HAWAII
COMMUNITY COLLEGES
HONOLULU COMMUNITY COLLEGE
OFFICE OF THE CHANCELLOR

Organization Chart

Chart II



^ Excluded from position count this chart

* Temporary Position

SUPERSEDED

Date DEC 22 2006

CHART UPDATED

DATE JUL - 1 2006

	<u>Perm</u>	<u>Temp</u>
General Fund	6.00	1.00