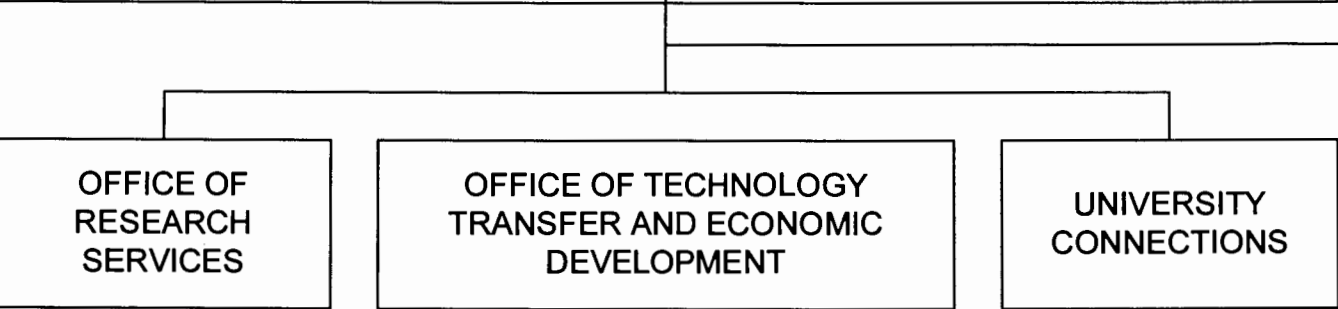
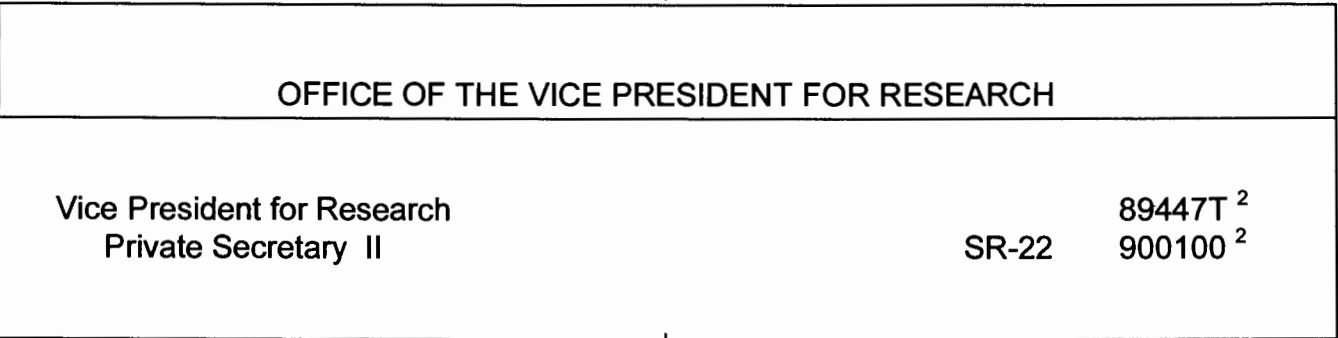


STATE OF HAWAI'I
UNIVERSITY OF HAWAI'I
SYSTEMWIDE ADMINISTRATION
VICE PRESIDENT FOR RESEARCH

POSITION ORGANIZATION CHART



¹ Excluded from position count
² Temporary position and not part of the appropriated position count
³ Currently budgeted in UH Mānoa assigned to Systemwide

CHART UPDATED
DATE SEP 12 2006

OFFICE OF THE VICE PRESIDENT
FOR RESEARCH

Vice President for Research 89447T[^]

STATE OF HAWAII
UNIVERSITY OF HAWAII
SYSTEMWIDE ADMINISTRATION
OFFICE OF THE VICE PRESIDENT FOR
RESEARCH
OFFICE OF RESEARCH SERVICES
POSITION ORGANIZATION CHART

OFFICE OF RESEARCH SERVICES

Director of Research Services		89006
Secretary III	SR-16	19369
Associate Dir of Research	PBD	81645
Clerk-Stenographer III	SR-11	50041

GENERAL ADMINISTRATION

IT Specialist	PBB	81982
Admin Off	PBB	80808

CONTRACT ADMINISTRATION

Admin Off	PBB	81139
Admin Off	PBB	80581
Clk-Typist III	SR-10	15410
Admin Off	PBB	81940
Clk-Typist II	SR-08	41987
Admin Off	PBC	81317
Admin Off	PBB	81259
Admin Off	PBB	77464
Admin Off	PBB	81471

SPONSORED PROJECTS ACCOUNTS

Fiscal Acctg Sp	PBC	80206
Fiscal Acctg Sp	PBB	81263
Acct Clk V	SR-15	48524
Acct Clk IV	SR-13	15526
Acct Clk IV	SR-13	14776
Acct Clk IV	SR-13	31590
Acct Clk IV	SR-13	14020
Acct Clk IV	SR-13	48521
Acct Clk IV	SR-13	48522
Acct Clk IV	SR-13	48523
Fiscal Acctg Sp	PBB	80195
Fiscal Acctg Sp	PBB	80139
Fiscal Acctg Sp	PBB	80147
Fiscal Acctg Sp	PBB	80138
Fiscal Acctg Sp	PBB	80145
Fiscal Acctg Sp	PBB	81930

COST STUDIES AND RATE
ANALYSIS

Fiscal Acctg Sp	PBD	80379
Fiscal Acctg Sp	PBB	81802

COMPLIANCE AND FIELD
SERVICES

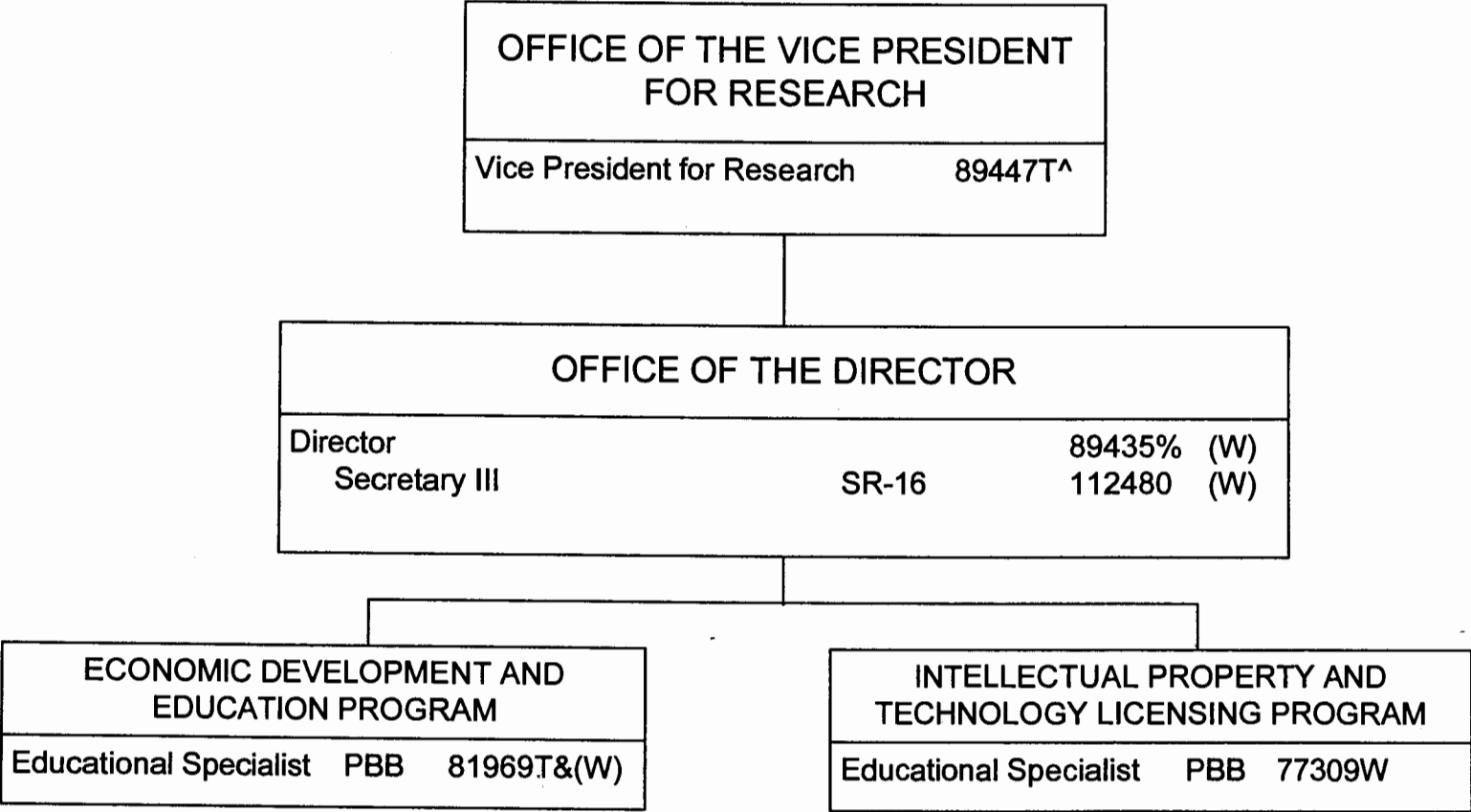
Fiscal Acctg Sp	PBC	81017
Personnel Off	PBB	81885
Admin Off	PBB	80180(.50)
Admin Off	PBB	81389
Fiscal Acctg Sp	PBB	80161

CHART UPDATED
DATE JUL - 1 2006

[^] Excluded from position count, this chart

STATE OF HAWAI'I
UNIVERSITY OF HAWAI'I
SYSTEMWIDE ADMINISTRATION
OFFICE OF THE VICE PRESIDENT FOR
RESEARCH
OFFICE OF TECHNOLOGY TRANSFER AND
ECONOMIC DEVELOPMENT

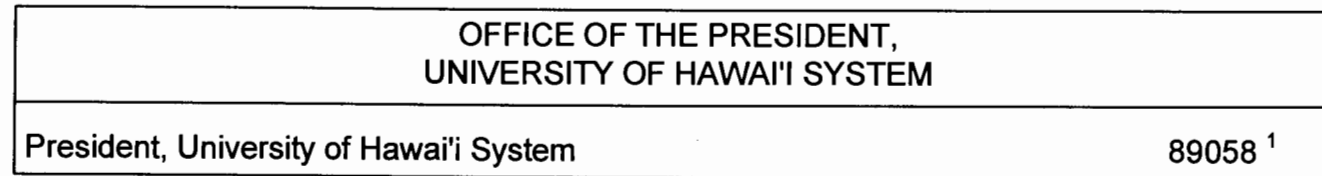
POSITION ORGANIZATION CHART



% To be redescribed
Position number to be determined, proposed classification
^ Excluded from position count, this chart
& Position count on this chart not part of the appropriation for UOH 903

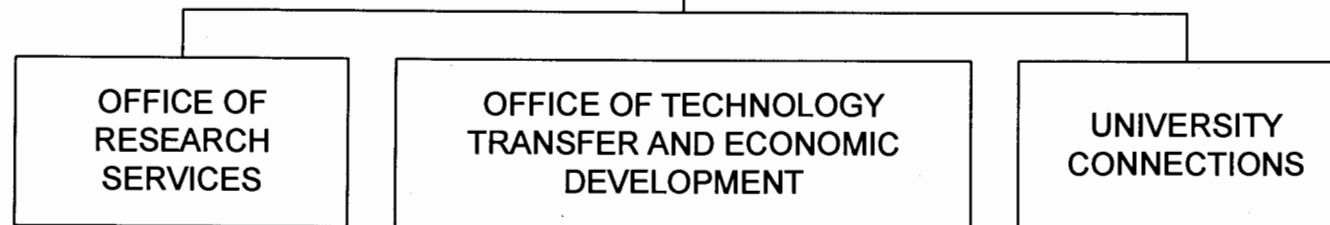
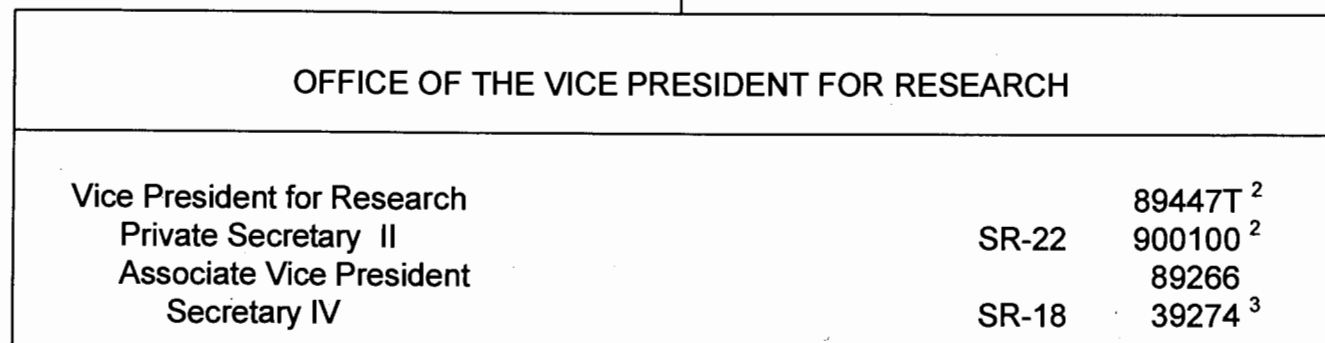
CHART UPDATED
NOV 17 2006
DATE _____

	Perm	Temp
General Fund		0.00
Revolving Fund (W)	3.00	1.00&



STATE OF HAWAI'I
UNIVERSITY OF HAWAI'I
SYSTEMWIDE ADMINISTRATION
VICE PRESIDENT FOR RESEARCH

POSITION ORGANIZATION CHART



- ¹ Excluded from position count
² Temporary position and not part of the appropriated position count
³ To be redescribed
⁴ Currently budgeted in UH Mānoa assigned to Systemwide

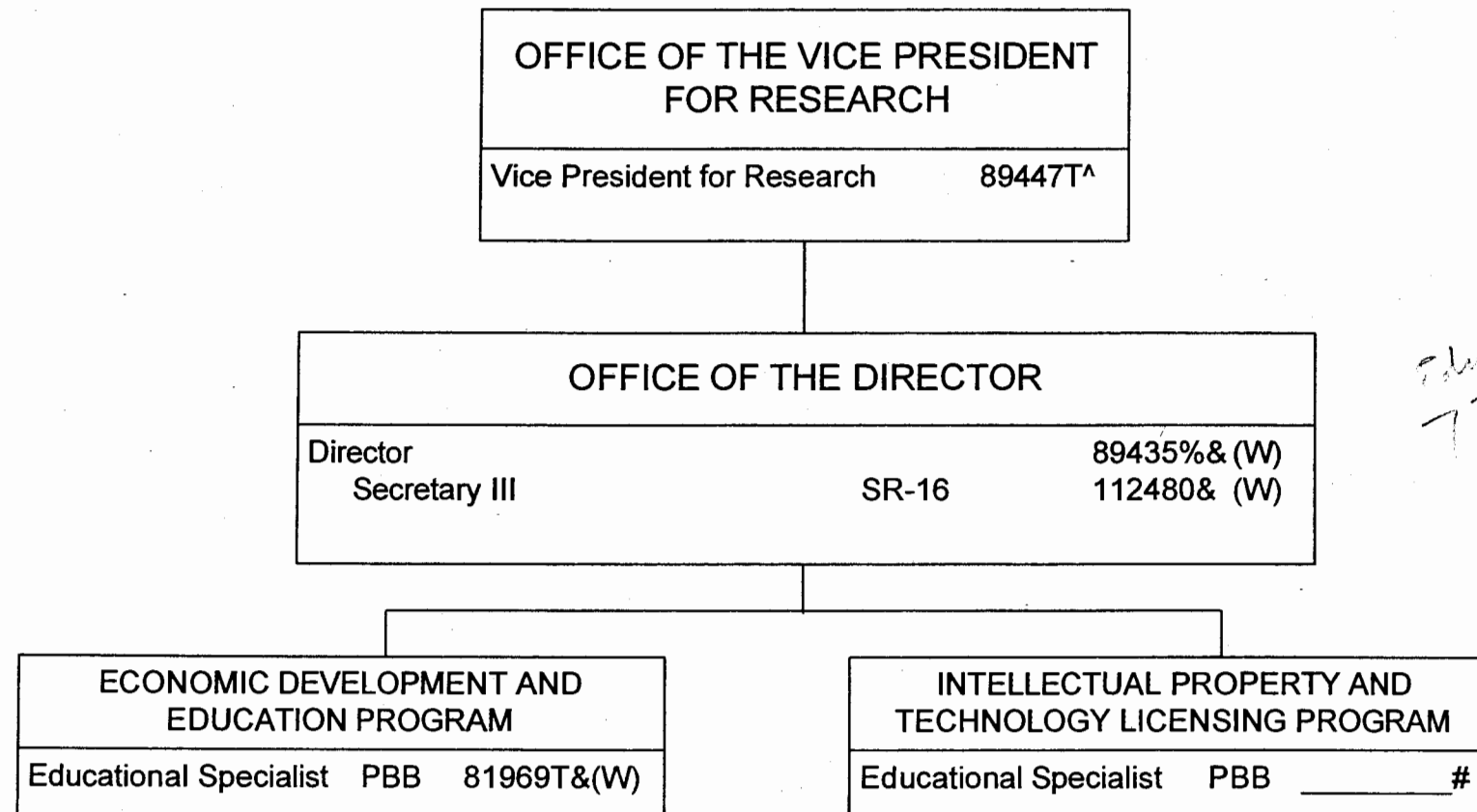
SUPERSEDED
Date SEP 12 2006

	<u>Perm</u>
General Fund	2.00

CHART UPDATED
DATE JUL - 1 2006

STATE OF HAWAII
UNIVERSITY OF HAWAII
SYSTEMWIDE ADMINISTRATION
OFFICE OF THE VICE PRESIDENT FOR
RESEARCH
OFFICE OF TECHNOLOGY TRANSFER AND
ECONOMIC DEVELOPMENT

POSITION ORGANIZATION CHART



% To be redescribed

Position number to be determined, proposed classification

^ Excluded from position count, this chart

& Position count on this chart not part of the appropriation for UOH 903

SUPERSEDED

Date NOV 17 2006

CHART UPDATED

DATE JUL - 1 2006

	Perm	Temp
General Fund		0.00
Revolving Fund (W)	2,000	3,000 1,000