

STATE OF HAWAII  
UNIVERSITY OF HAWAII  
UNIVERSITY OF HAWAII AT MANOA  
SCHOOL OF OCEAN AND EARTH  
SCIENCE AND TECHNOLOGY

ORGANIZATION CHART  
CHART XXXI

## OFFICE OF THE DEAN POSITION ORGANIZATION CHART

OFFICE OF THE PRESIDENT

Office of the Vice Chancellor  
Research and Graduate Education  
UH Manoa

OFFICE OF THE DEAN

DEAN  
COLLEGE OF  
NATURAL SCIENCES

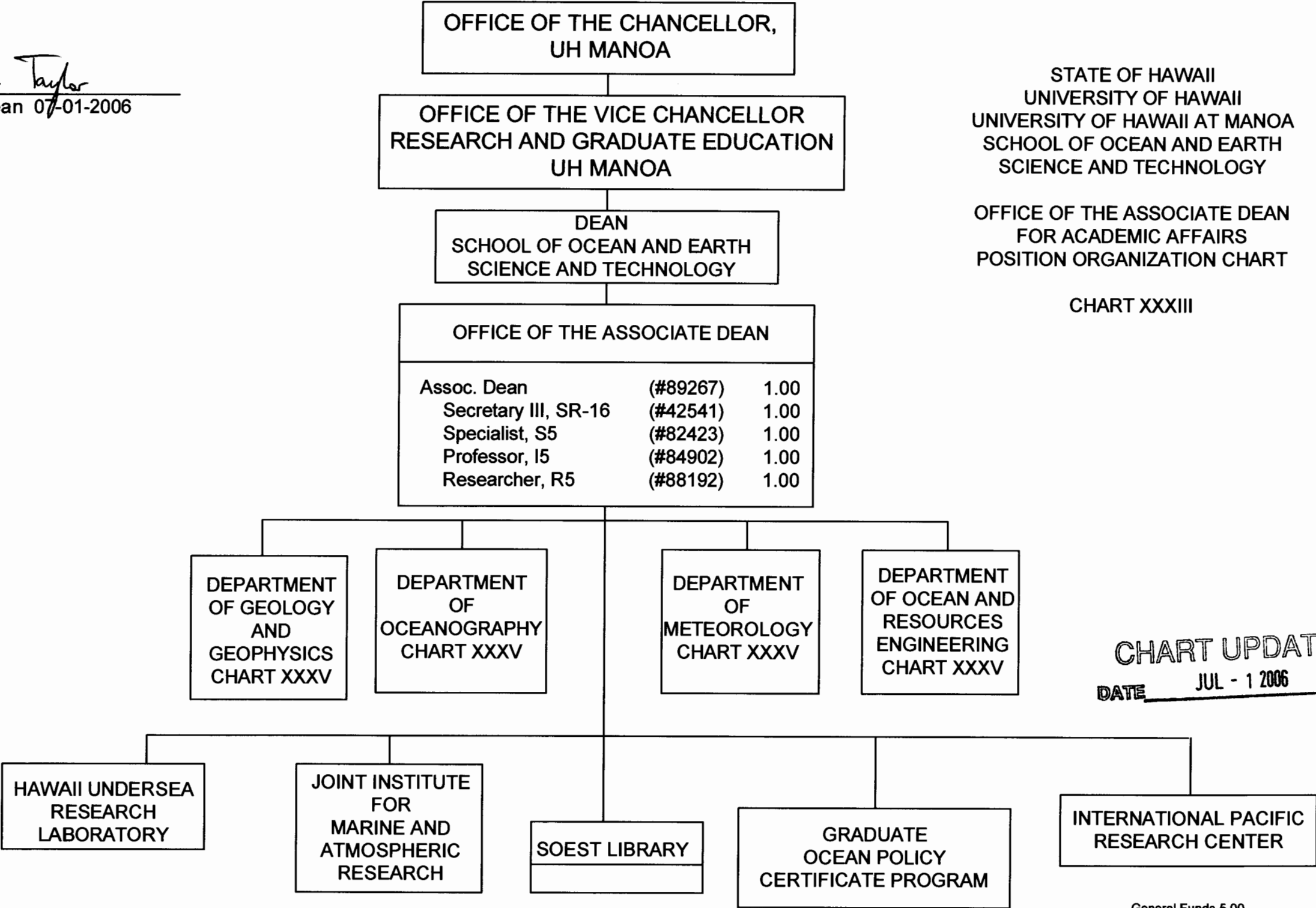
## EXTERNAL ADVISORY COUNCIL

SOEST  
RESEARCH COUNCIL

DATE JUL - 1 2006

**General Funds 2.00**

APPROVED:  
Brian Taylor  
Brian Taylor, Dean 07-01-2006



STATE OF HAWAII  
UNIVERSITY OF HAWAII  
UNIVERSITY OF HAWAII AT MANOA  
SCHOOL OF OCEAN AND EARTH  
SCIENCE AND TECHNOLOGY

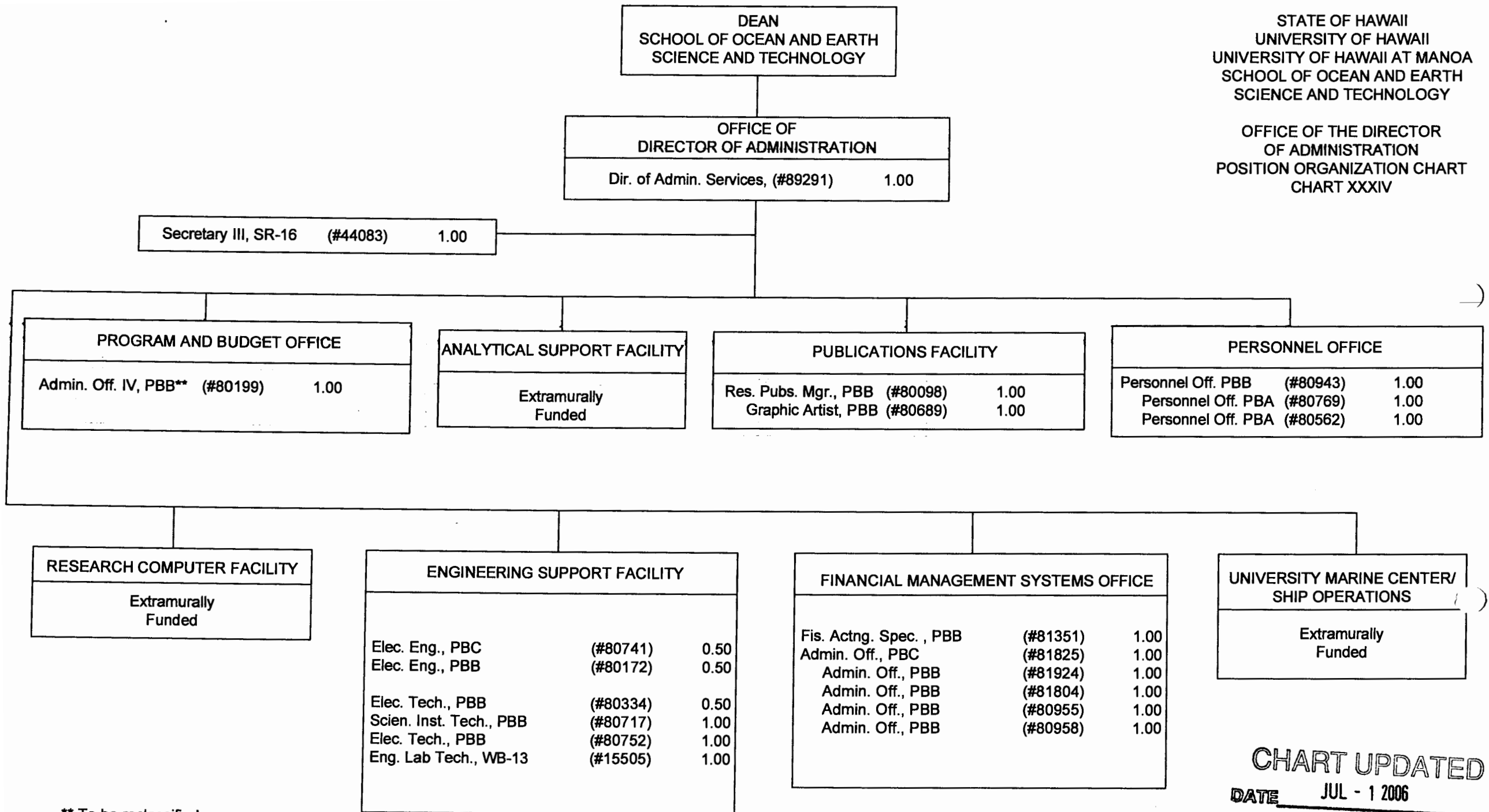
OFFICE OF THE ASSOCIATE DEAN  
FOR ACADEMIC AFFAIRS  
POSITION ORGANIZATION CHART

CHART XXXIII

CHART UPDATED  
DATE JUL - 1 2006

STATE OF HAWAII  
UNIVERSITY OF HAWAII  
UNIVERSITY OF HAWAII AT MANOA  
SCHOOL OF OCEAN AND EARTH  
SCIENCE AND TECHNOLOGY

OFFICE OF THE DIRECTOR  
OF ADMINISTRATION  
POSITION ORGANIZATION CHART  
CHART XXXIV



\*\* To be reclassified

CHART UPDATED  
DATE JUL - 1 2006

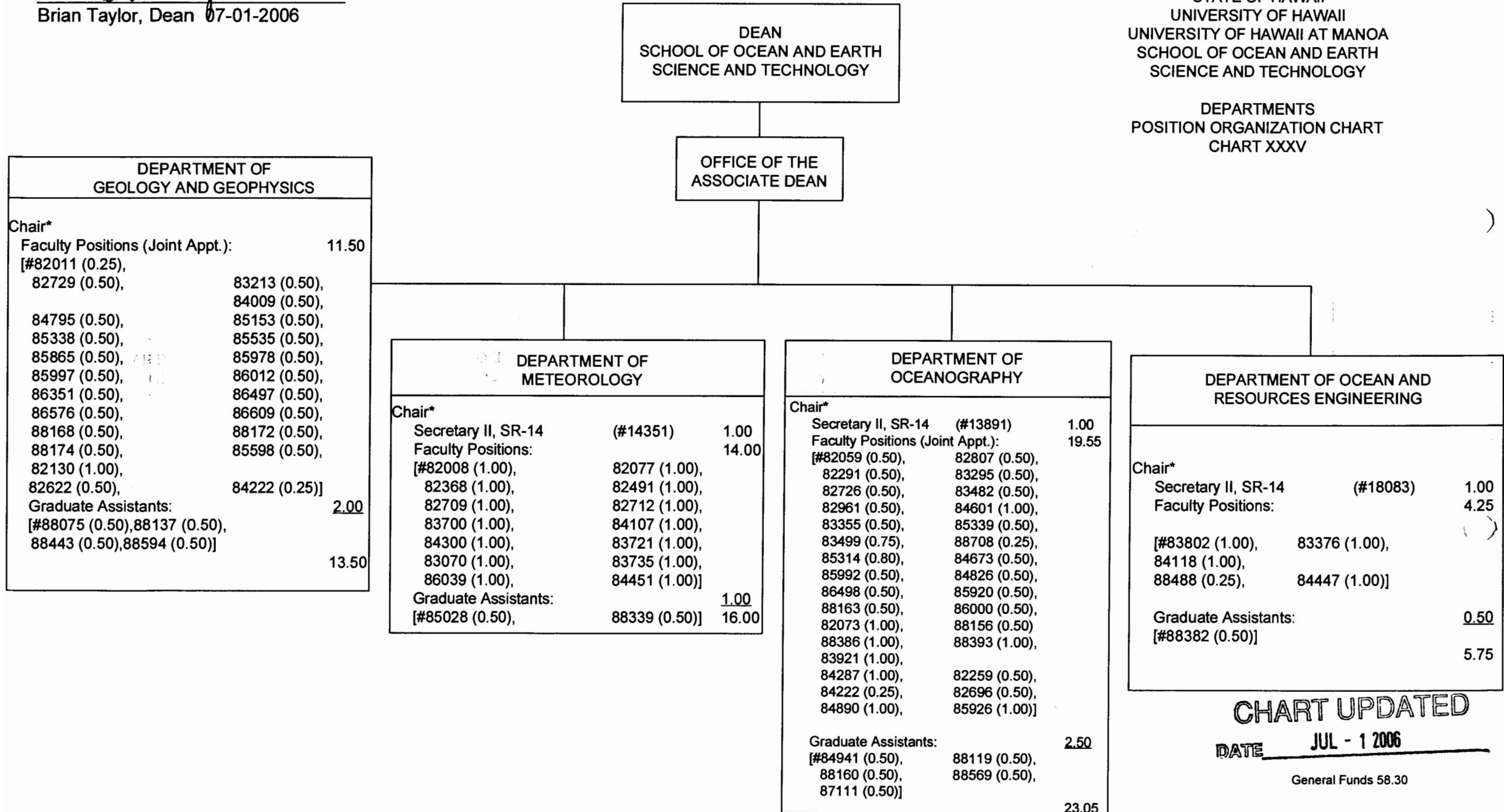
General Funds 18.50

APPROVED:

Brian Taylor  
Brian Taylor, Dean 07-01-2006

STATE OF HAWAII  
UNIVERSITY OF HAWAII  
UNIVERSITY OF HAWAII AT MANOA  
SCHOOL OF OCEAN AND EARTH  
SCIENCE AND TECHNOLOGY

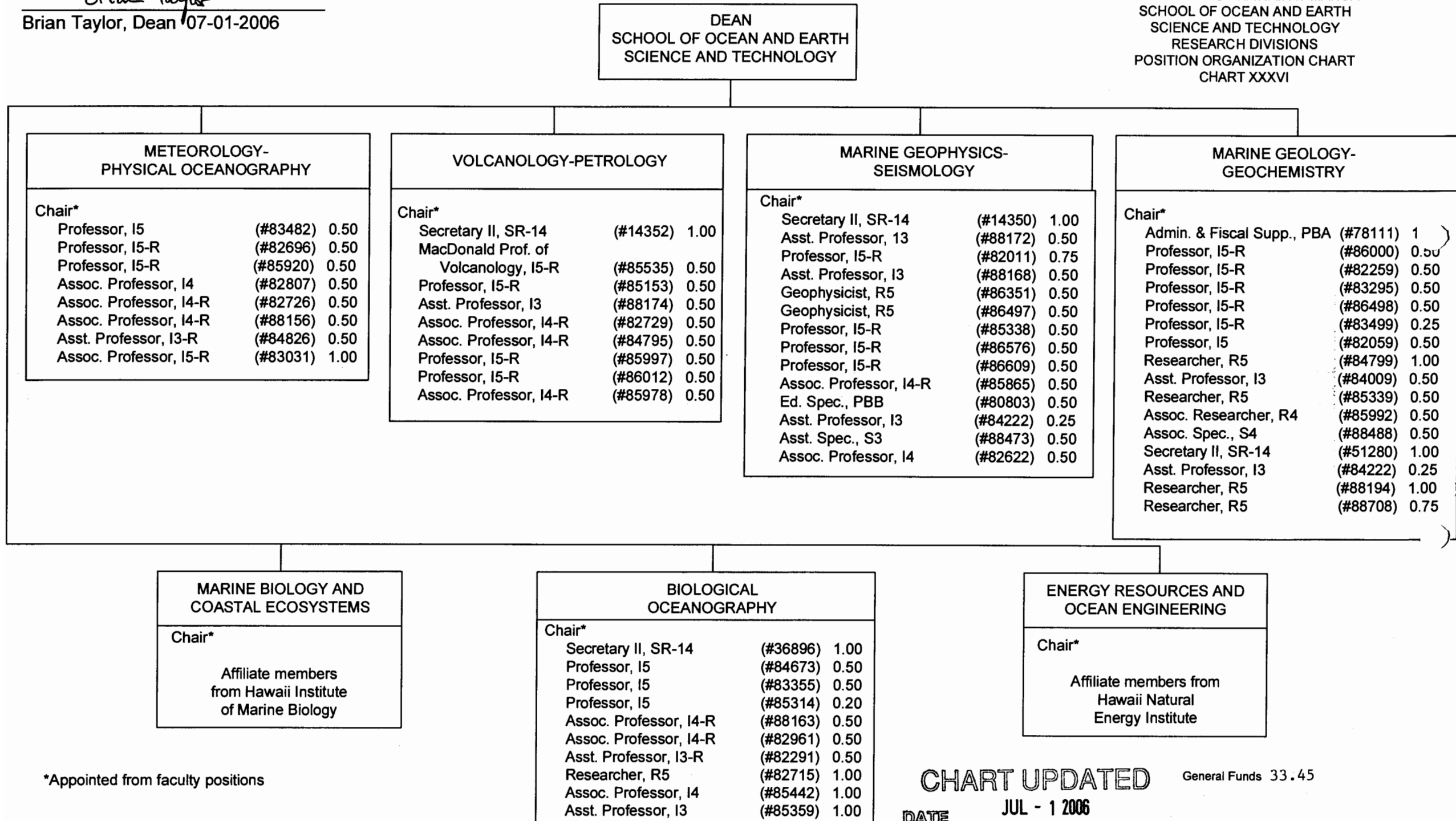
DEPARTMENTS  
POSITION ORGANIZATION CHART  
CHART XXXV



APPROVED:

Brian Taylor  
Brian Taylor, Dean 07-01-2006

STATE OF HAWAII  
UNIVERSITY OF HAWAII  
UNIVERSITY OF HAWAII AT MANOA  
SCHOOL OF OCEAN AND EARTH  
SCIENCE AND TECHNOLOGY  
RESEARCH DIVISIONS  
POSITION ORGANIZATION CHART  
CHART XXXVI



\*Appointed from faculty positions

CHART UPDATED  
JUL - 1 2006  
DATE \_\_\_\_\_

General Funds 33.45

STATE OF HAWAII  
UNIVERSITY OF HAWAII  
UNIVERSITY OF HAWAII AT MANOA  
SCHOOL OF OCEAN AND EARTH  
SCIENCE AND TECHNOLOGY

HAWAII INSTITUTE OF MARINE BIOLOGY  
POSITION ORGANIZATION CHART

CHART XXXVII

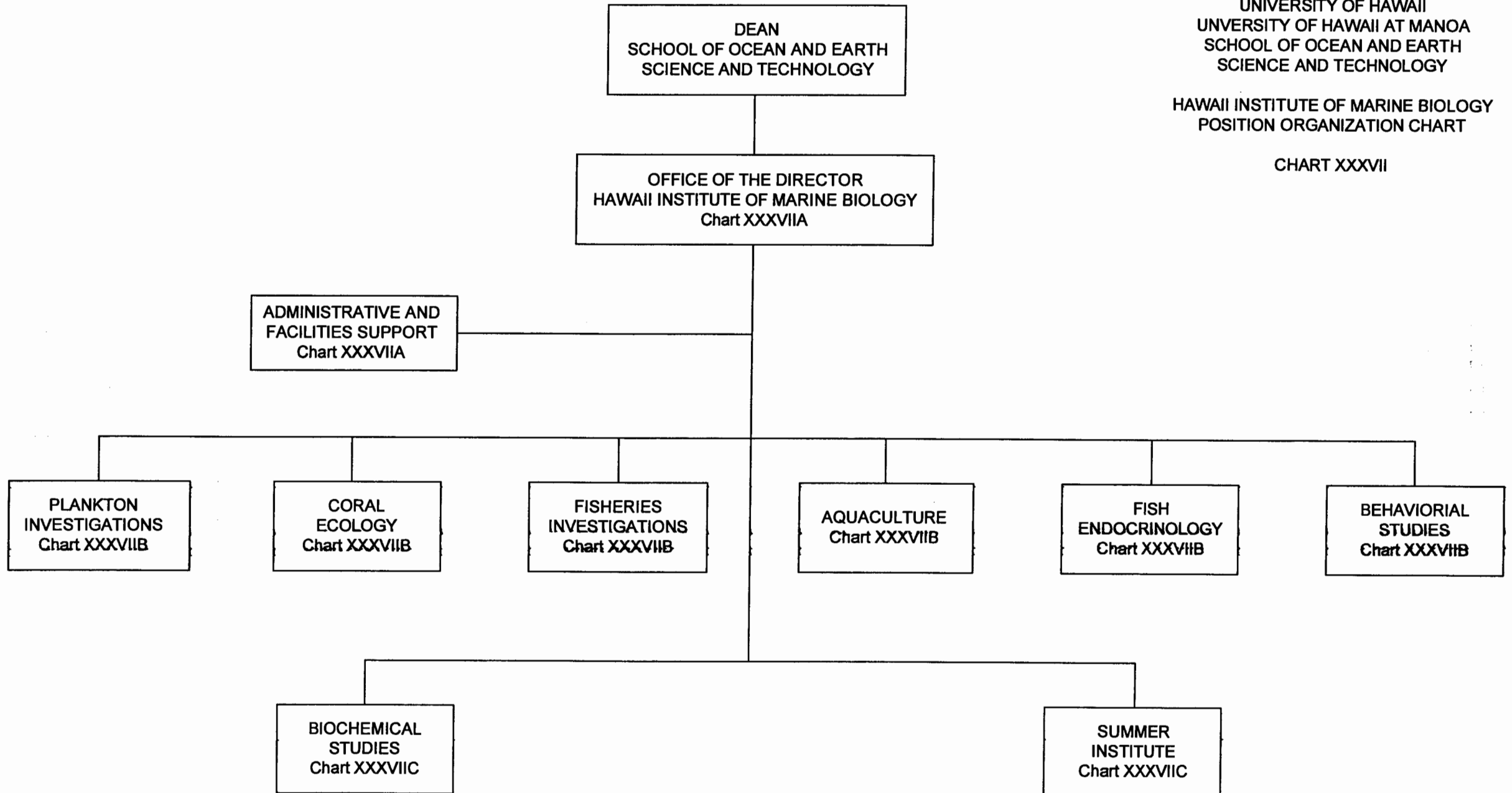


CHART UPDATED  
JUL - 1 2006  
DATE \_\_\_\_\_

APPROVED:

Brian Taylor  
Brian Taylor, Dean 07-01-2006

STATE OF HAWAII  
UNIVERSITY OF HAWAII  
UNIVERSITY OF HAWAII AT MANOA  
SCHOOL OF OCEAN AND EARTH  
SCIENCE AND TECHNOLOGY  
HAWAII INSTITUTE OF MARINE BIOLOGY  
POSITION ORGANIZATION CHART  
CHART XXXVIIA

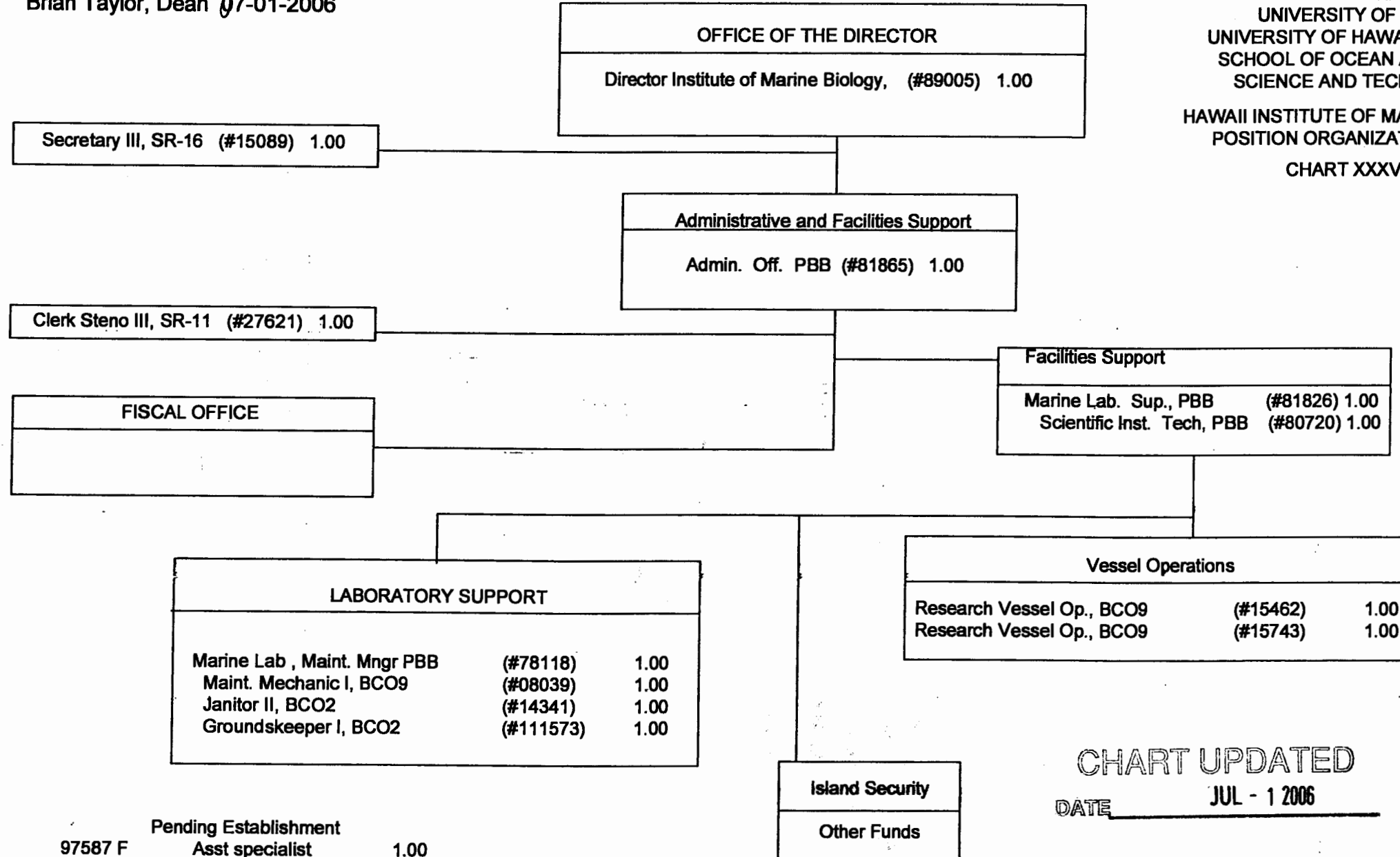


CHART UPDATED  
DATE JUL - 1 2006

Pending Establishment

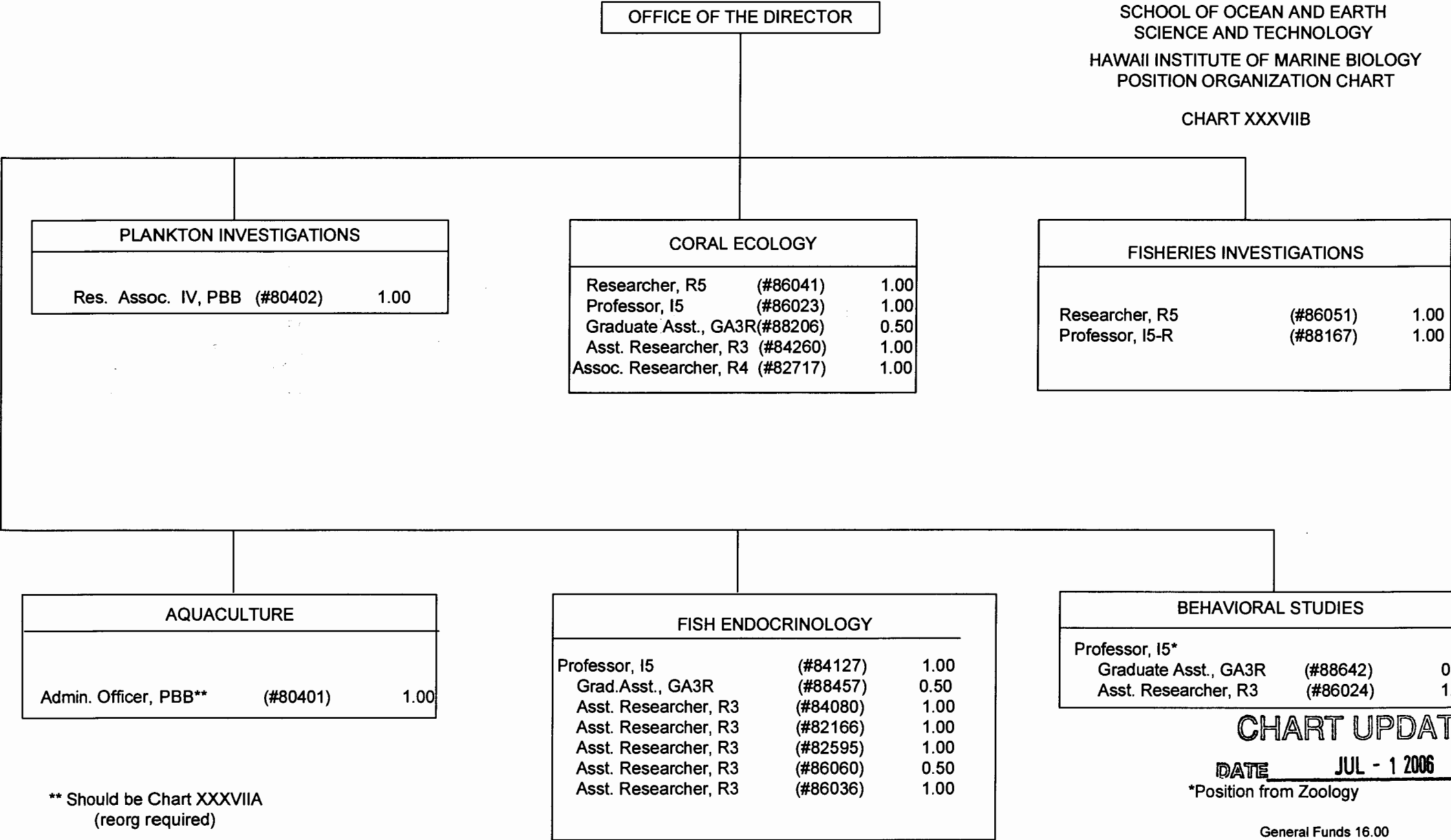
97587 F	Asst specialist	1.00
97588 F	PBB	1.00
97589 F	Edu. Specialist	1.00
97590 F	Env. Safety Spec.	1.00

General Funds 16.00



APPROVED:  
Brian Taylor  
Brian Taylor, Dean 07-01-2006

STATE OF HAWAII  
UNIVERSITY OF HAWAII  
UNIVERSITY OF HAWAII AT MANOA  
SCHOOL OF OCEAN AND EARTH  
SCIENCE AND TECHNOLOGY  
HAWAII INSTITUTE OF MARINE BIOLOGY  
POSITION ORGANIZATION CHART  
CHART XXXVIIB



STATE OF HAWAII  
UNIVERSITY OF HAWAII  
UNIVERSITY OF HAWAII AT MANOA  
SCHOOL OF OCEAN AND EARTH  
SCIENCE AND TECHNOLOGY

HAWAII INSTITUTE OF MARINE BIOLOGY  
POSITION ORGANIZATION CHART

CHART XXXVIIC

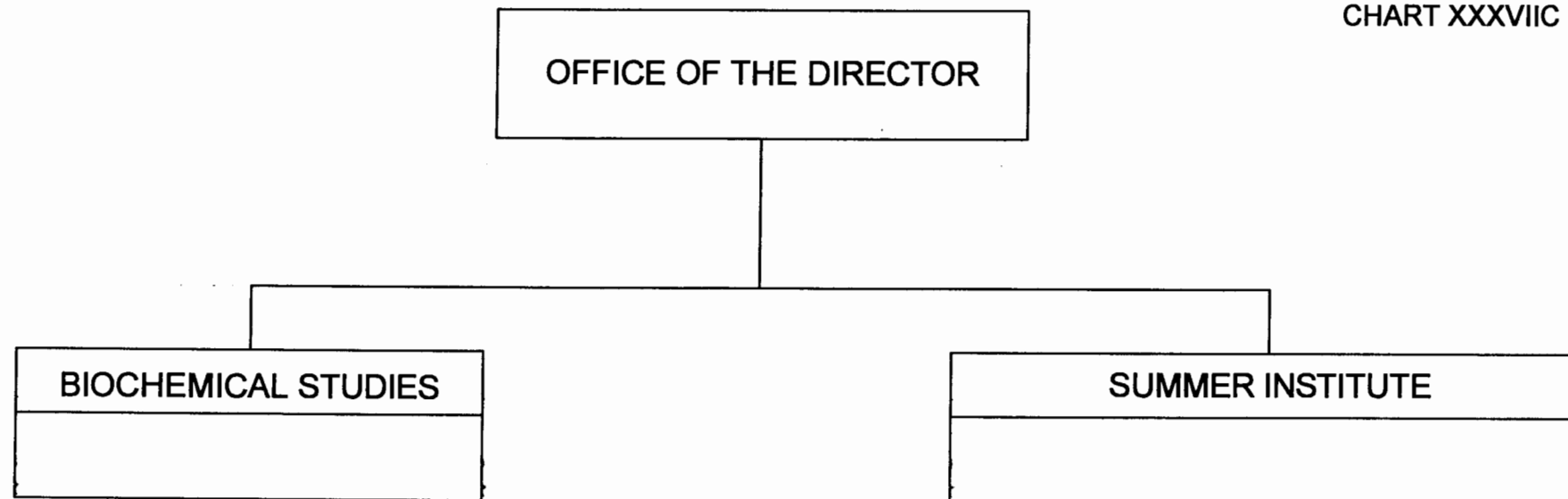


CHART UPDATED  
DATE JUL - 1 2006

APPROVED:  
Brian Taylor  
Brian Taylor, Dean 07-01-2006

STATE OF HAWAII  
UNIVERSITY OF HAWAII  
UNIVERSITY OF HAWAII AT MANOA  
SCHOOL OF OCEAN AND EARTH  
SCIENCE AND TECHNOLOGY

HAWAII INSTITUTE OF GEOPHYSICS  
AND PLANETOLOGY  
POSITION ORGANIZATION CHART  
CHART XXXVIII

DEAN  
SCHOOL OF OCEAN AND EARTH  
SCIENCE AND TECHNOLOGY

OFFICE OF THE DIRECTOR  
HAWAII INSTITUTE OF GEOPHYSICS  
AND PLANETOLOGY

Director, (#89123) 1.00

ADVISORY COUNCIL

Secretary III, SR-16 (#14353) 1.00  
Assoc. Director (Faculty, R5 appointed from  
research position)

PLANETOLOGY			
Chair*			
Secretary II, SR-14	(#11980)	1.00	
Asst. Professor, I3	(#86038)	1.00	
Asst. Professor, I3	(#86407)	1.00	
Researcher, R5	(#82103)	1.00	
Researcher, R5	(#85998)	1.00	
Researcher, R5	(#86011)	1.00	
Specialist, S5	(#84382)	1.00	
Professor, I5	(#82625)	1.00	
Researcher, R5	(#86215)	1.00	
Assoc. Researcher, R4	(#88185)	1.00	
Researcher, R5	(#84928)	1.00	
Assoc. Specialist, S4	(#88508)	1.00	
Professor, I5	(#82800)	1.00	
Planetary Scientist, R5	(#86021)	1.00	

GEOPHYSICAL STUDIES			
Chair*			
Asst. Professor, I3	(#83201)	1.00	
Geophysicist, R5	(#83293)	1.00	
Researcher, R5	(#87436)	1.00	
Geochemist, R5	(#88484)	1.00	
Researcher, R5	(#84046)	1.00	

TECHNOLOGY DEVELOPMENT			
Chair*			
Asst. Researcher, R3	(#88399)	1.00	

APPLIED RESEARCH			
Chair*			
Researcher, R5	(#85996)	1.00	

MINERAL PHYSICS			
Chair*			
Geophysicist, R5	(#83491)	1.00	
Geophysicist, R5	(#85004)	1.00	
Mechanical Eng., PBB	(#80782)	1.00	

\* Appointed from Faculty  
Positioner

CHART UPDATED

DATE JUL - 1 2006

General Funds 26.00

STATE OF HAWAII  
UNIVERSITY OF HAWAII  
UNIVERSITY OF HAWAII AT MANOA  
SCHOOL OF OCEAN AND EARTH SCIENCE AND TECHNOLOGY  
HAWAII NATURAL ENERGY INSTITUTE  
POSTIION ORGANIZATION CHART  
CHART XXXIX

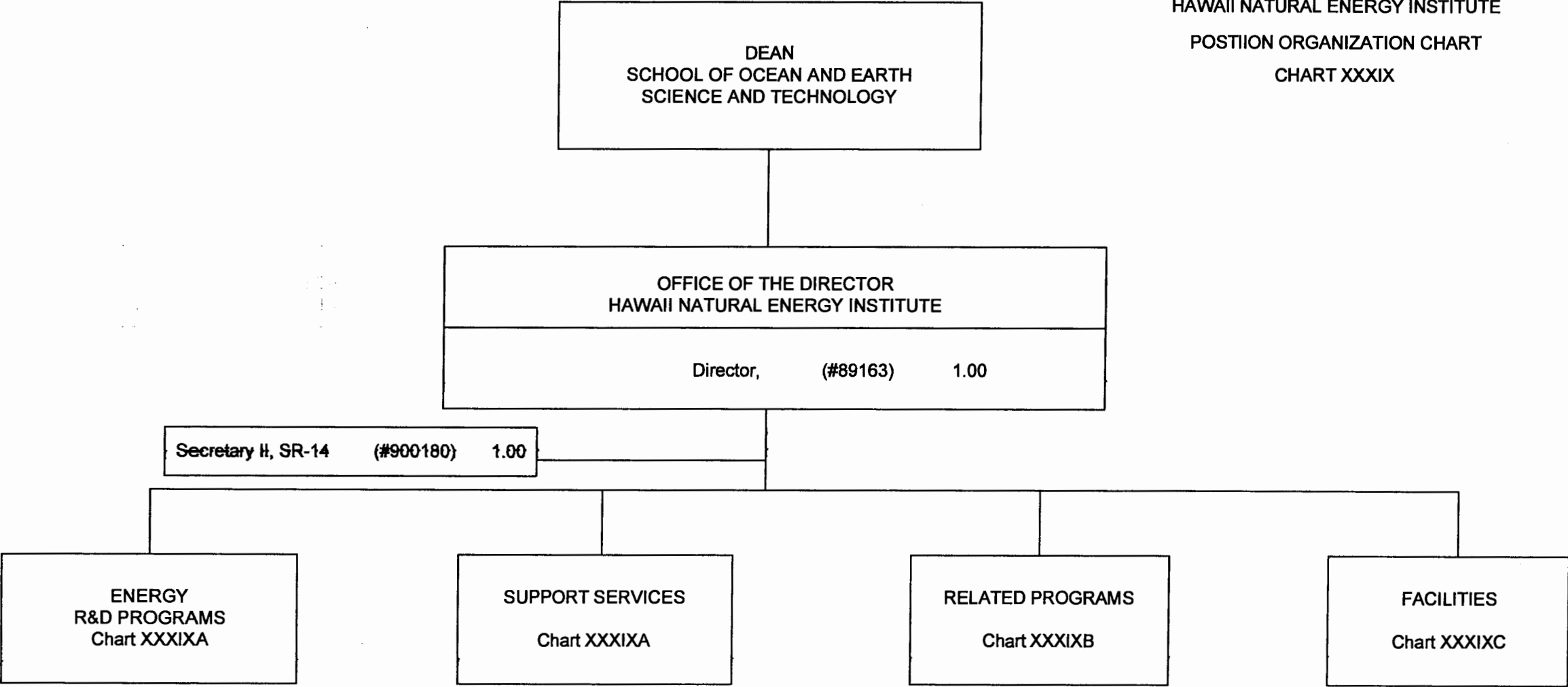


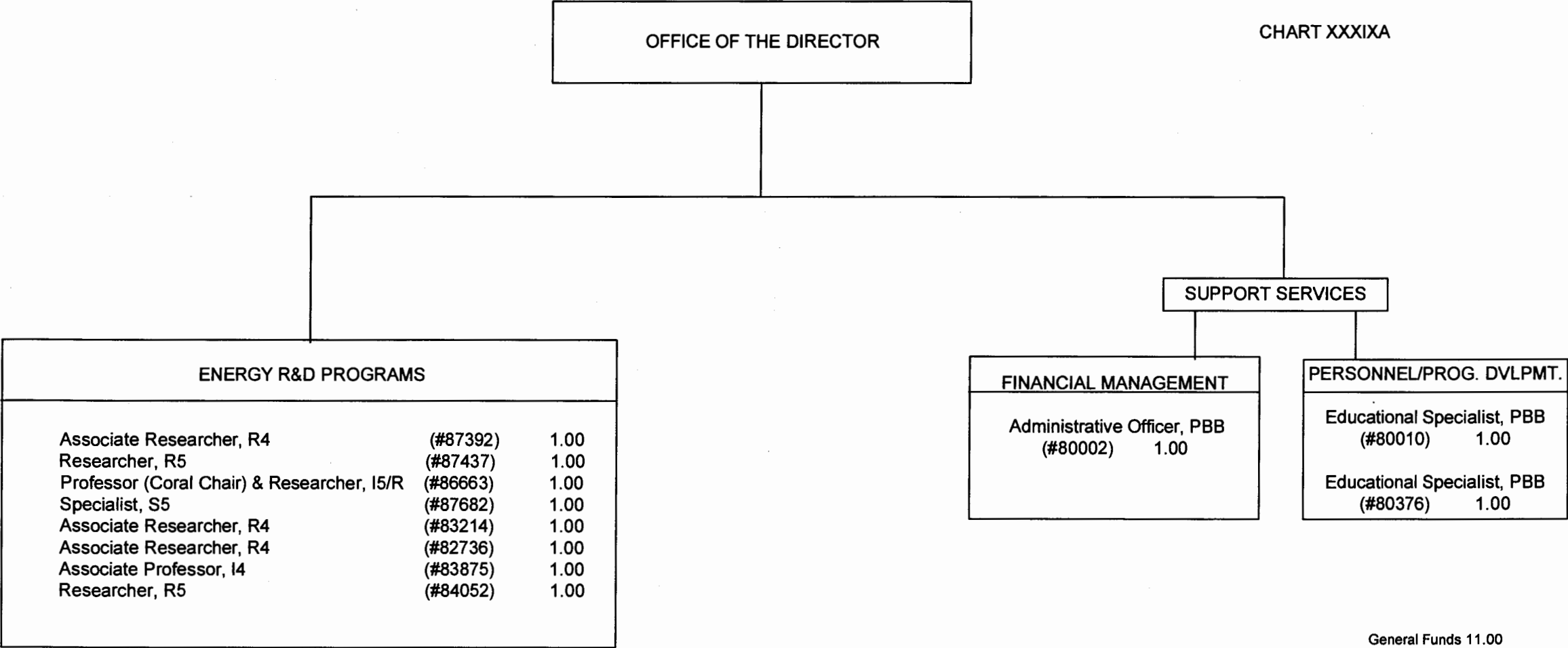
CHART UPDATED  
JUL - 1 2006  
DATE  
General Funds 2.00

APPROVED:  
Brian Taylor  
Brian Taylor, Dean 07-01-2006

STATE OF HAWAII  
UNIVERSITY OF HAWAII  
UNIVERSITY OF HAWAII AT MANOA  
SCHOOL OF OCEAN AND EARTH SCIENCE AND TECHNOLOGY  
HAWAII NATURAL ENERGY INSTITUTE

POSITION ORGANIZATION CHART

CHART XXXIXA



General Funds 11.00

CHART UPDATED  
DATE JUL - 1 2006

STATE OF HAWAII  
UNIVERSITY OF HAWAII  
UNIVERSITY OF HAWAII AT MANOA  
SCHOOL OF OCEAN AND EARTH SCIENCE AND TECHNOLOGY  
HAWAII NATURAL ENERGY INSTITUTE

POSITION ORGANIZATION CHART

CHART XXXIXB

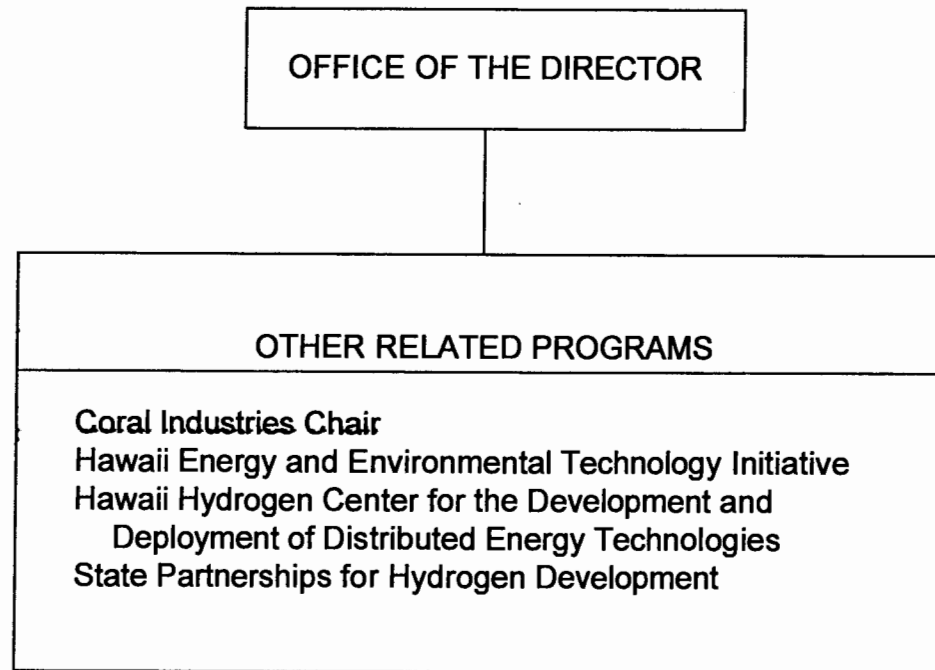


CHART UPDATED  
DATE JUL - 1 2006

STATE OF HAWAII  
UNIVERSITY OF HAWAII  
UNIVERSITY OF HAWAII AT MANOA  
SCHOOL OF OCEAN AND EARTH SCIENCE AND TECHNOLOGY  
HAWAII NATURAL ENERGY INSTITUTE

POSITION ORGANIZATION CHART

CHART XXXIXC

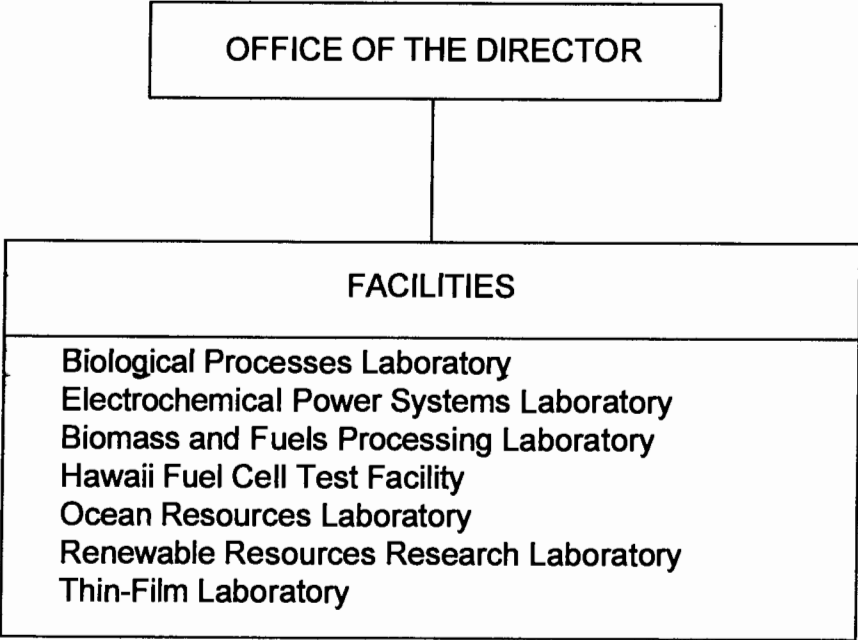


CHART UPDATED  
JUL - 1 2006  
DATE \_\_\_\_\_

STATE OF HAWAII  
UNIVERSITY OF HAWAII  
UNIVERSITY OF HAWAII AT MANOA  
SCHOOL OF OCEAN AND EARTH  
SCIENCE AND TECHNOLOGY

SEA GRANT COLLEGE PROGRAM  
ORGANIZATION CHART

CHART XL

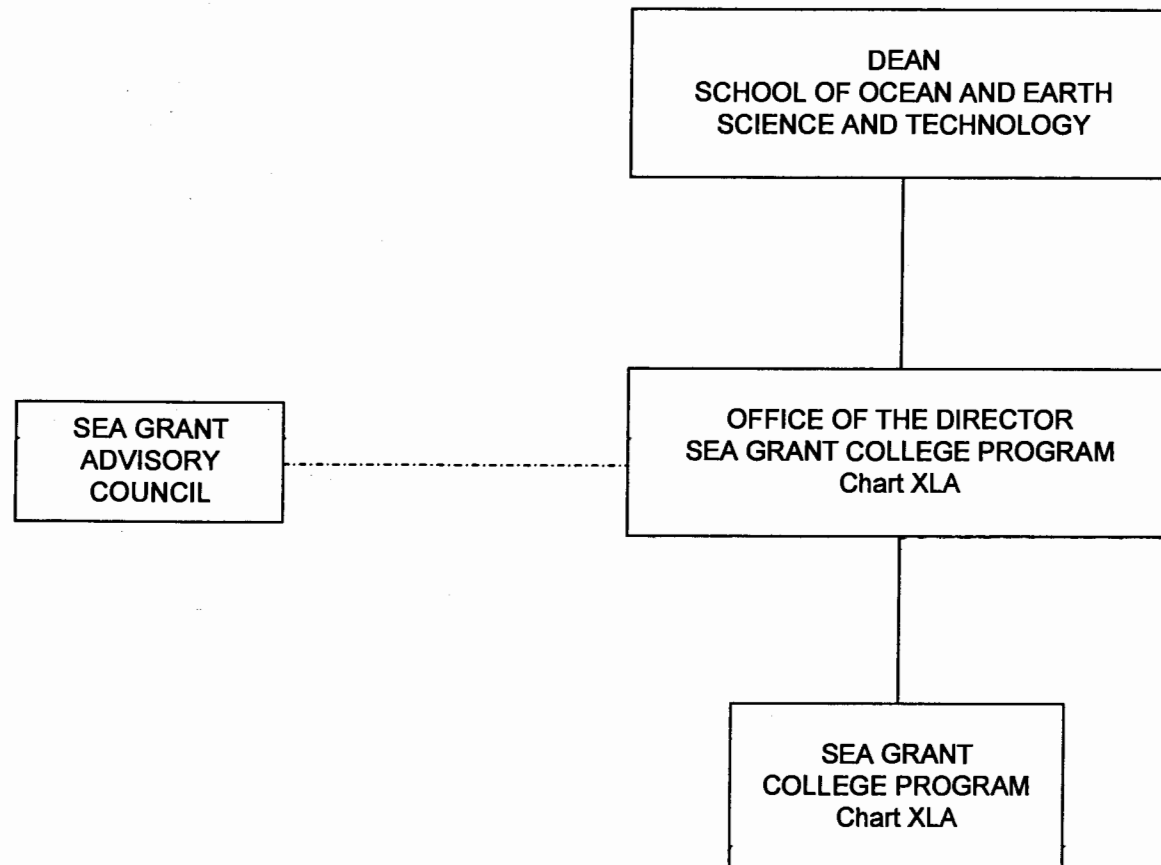


CHART UPDATED

DATE JUL - 1 2006



STATE OF HAWAII  
UNIVERSITY OF HAWAII  
UNIVERSITY OF HAWAII AT MANOA  
SCHOOL OF OCEAN AND EARTH  
SCIENCE AND TECHNOLOGY

SEA GRANT COLLEGE PROGRAM  
ORGANIZATION CHART

CHART XLA

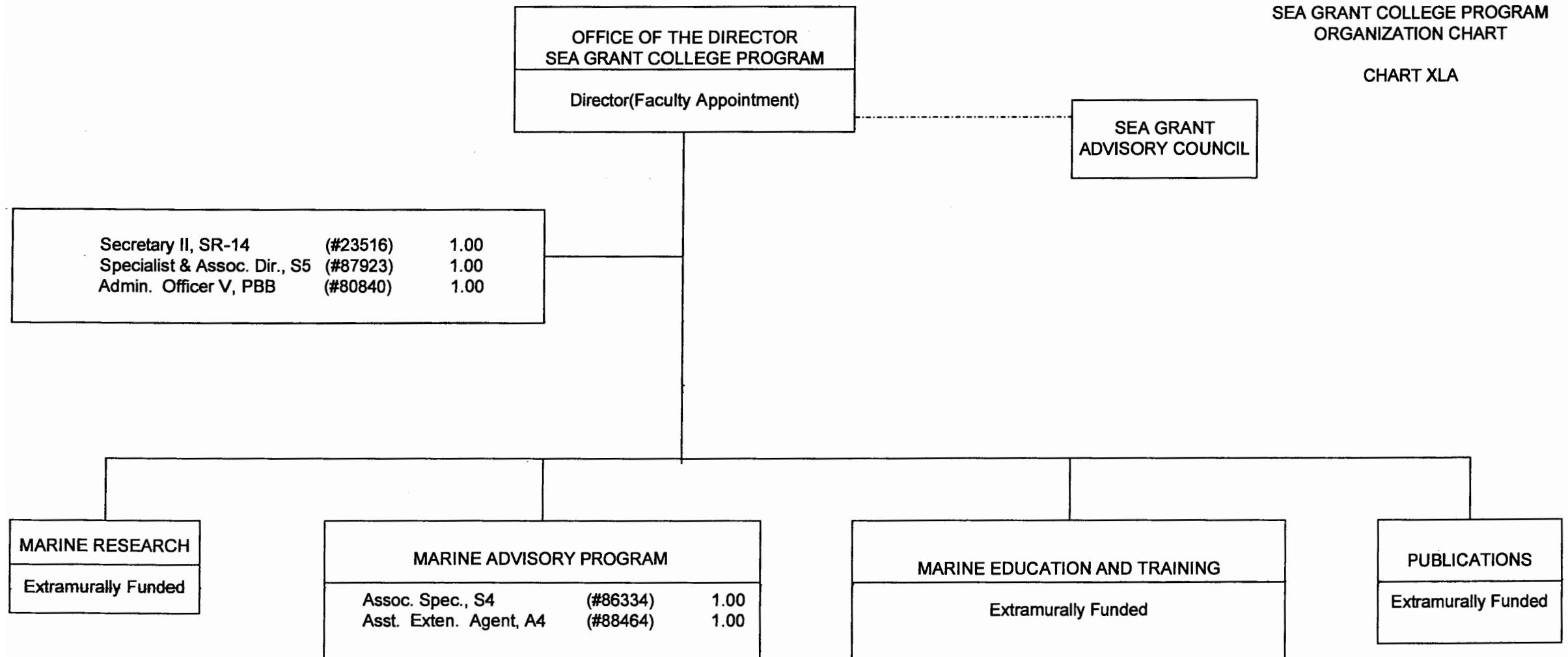


CHART UPDATED  
JUL - 1 2006  
DATE \_\_\_\_\_

General Funds 5.00