

STATE OF HAWAII
UNIVERSITY OF HAWAII
UNIVERSITY OF HAWAII AT MANOA
COLLEGES OF ARTS AND SCIENCES
COLLEGE OF SOCIAL SCIENCES

CHART I

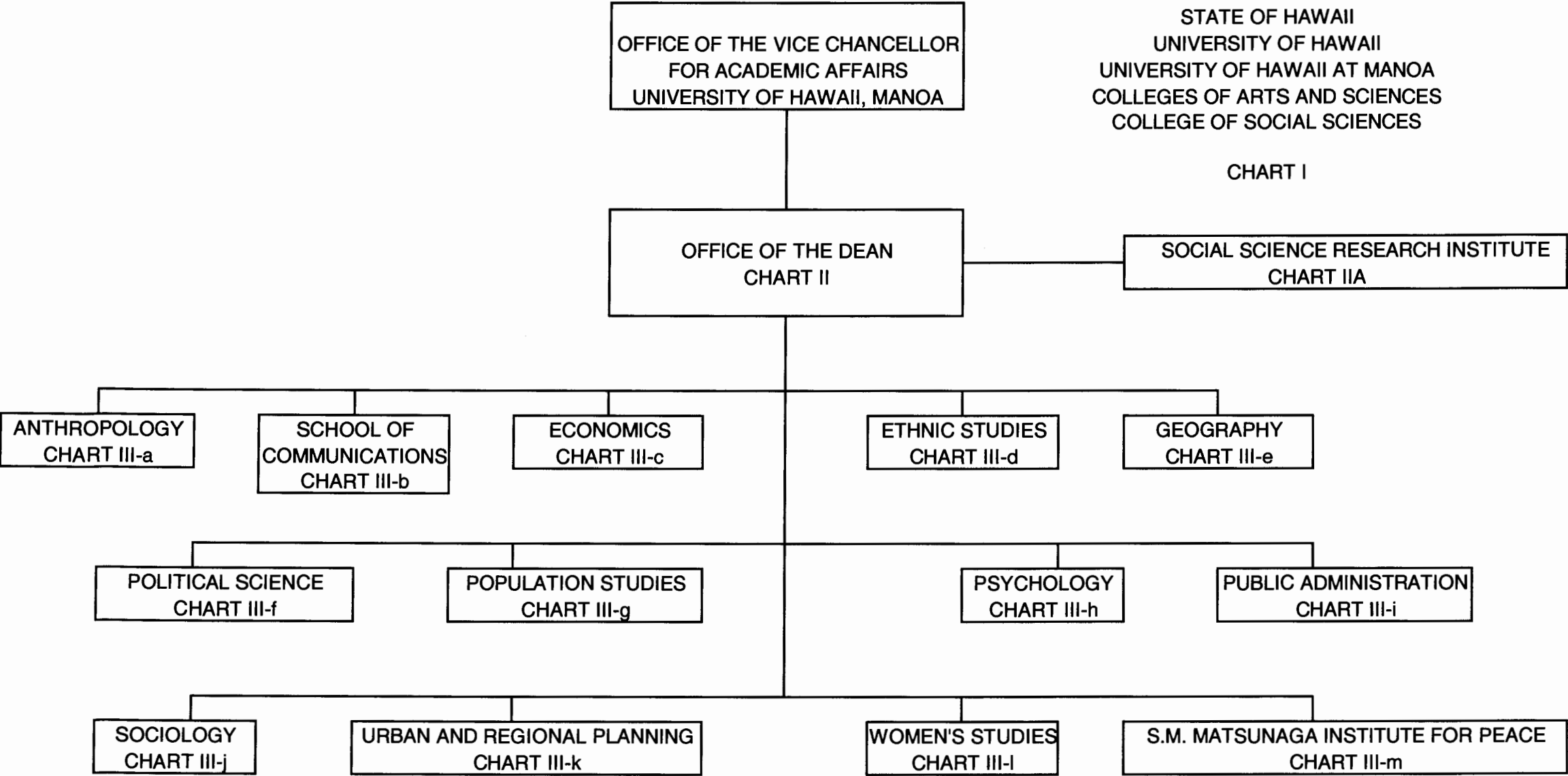
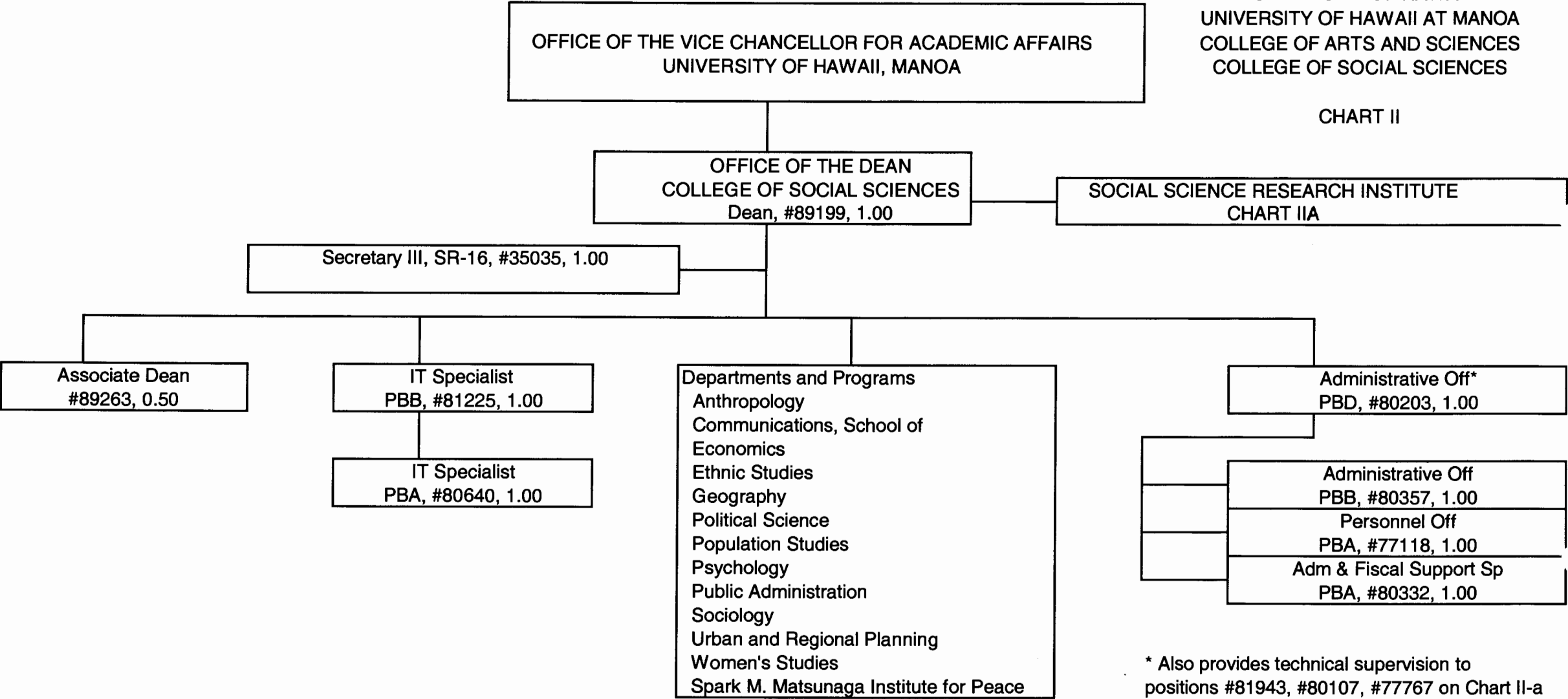


CHART UPDATED
DATE JUL - 1 2006

Approved: *Richard Dubanoski* JUL - 1 2006
Richard Dubanoski, Dean
College of Social Sciences

STATE OF HAWAII
UNIVERSITY OF HAWAII
UNIVERSITY OF HAWAII AT MANOA
COLLEGE OF ARTS AND SCIENCES
COLLEGE OF SOCIAL SCIENCES

CHART II



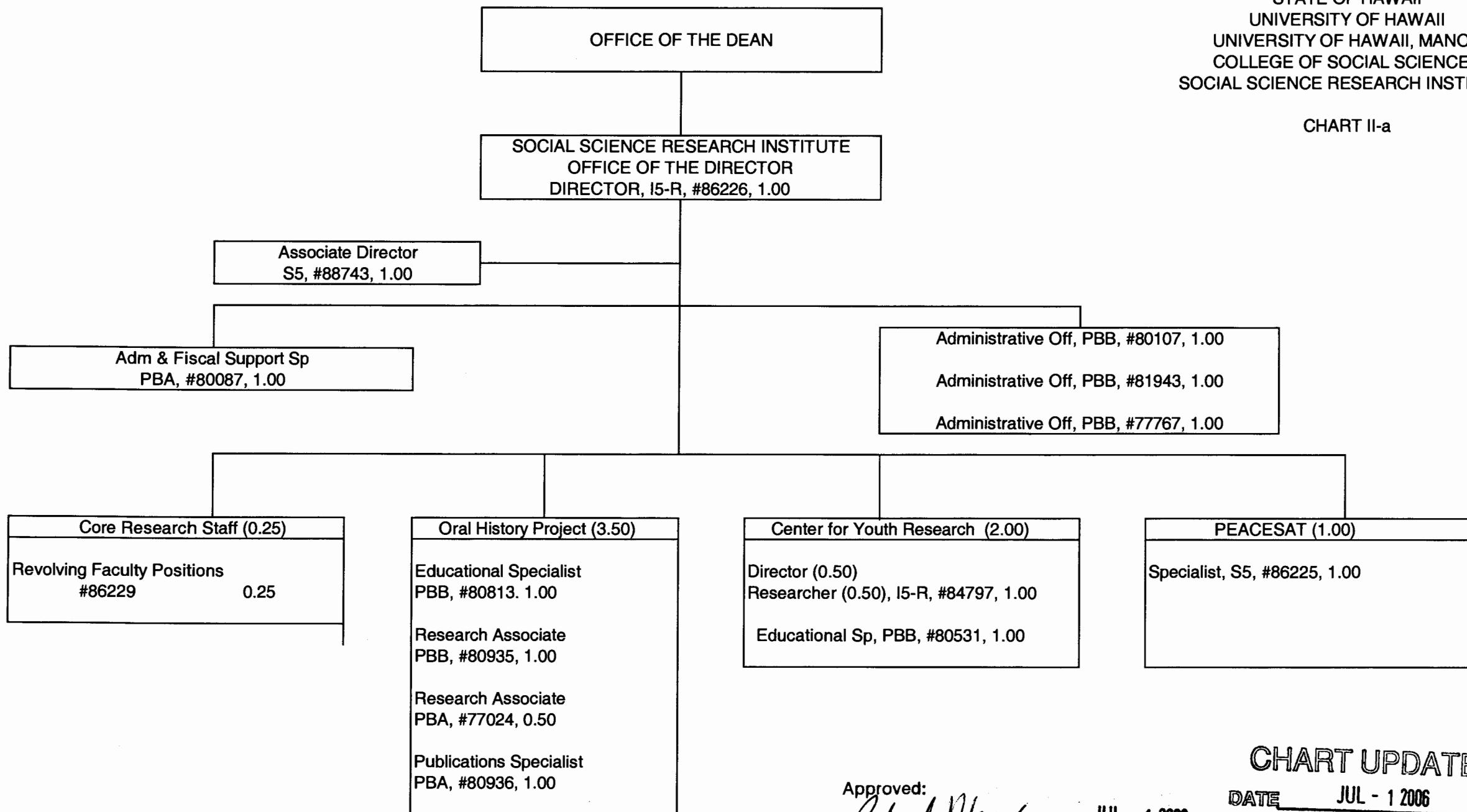
* Also provides technical supervision to
positions #81943, #80107, #77767 on Chart II-a

CHART UPDATED
DATE JUL - 1 2006

General Funds 8.50
Approved: *Richard Dubanoski* JUL - 1 2006
Richard Dubanoski, Dean
College of Social Sciences

STATE OF HAWAII
UNIVERSITY OF HAWAII
UNIVERSITY OF HAWAII, MANOA
COLLEGE OF SOCIAL SCIENCES
SOCIAL SCIENCE RESEARCH INSTITUTE

CHART II-a



Approved:

Richard Dubanoski

JUL - 1 2006

Richard Dubanoski, Dean
College of Social Sciences

CHART UPDATED

DATE JUL - 1 2006

General Funds 12.75

OFFICE OF THE DEAN

STATE OF HAWAII
UNIVERSITY OF HAWAII
UNIVERSITY OF HAWAII AT MANOA
COLLEGES OF ARTS AND SCIENCES
COLLEGE OF SOCIAL SCIENCES
DEPARTMENT OF ANTHROPOLOGY

POSITION ORGANIZATION CHART

CHART III-a

DEPARTMENT OF ANTHROPOLOGY					
Chair (appointed from faculty positions)					
Secretary II, SR-14, #13482					1.00
Educational Sp, PBA, #80639					1.00
Educational Sp, PBB, #81746					1.00
Faculty Positions:					16.00
<u>Full time:</u>	#82188,	82195,	82638,	82779,	83004,
	83358,	83405,	83458,	83574,	83720,
	83756,	83924,	84206,	84399,	85082,
<u>Part time:</u>	#84921 (.50), 88154 (.50)				
Graduate Assistants:					3.00
	#83831,	83275,	88064,	88367	
	88529,	88591			

					22.00

Approved:

Richard Dubanoski

JUL - 1 2006

Richard Dubanoski, Dean
College of Social Sciences

General Funds 22.00

CHART UPDATED

DATE JUL - 1 2006

OFFICE OF THE DEAN

STATE OF HAWAII
UNIVERSITY OF HAWAII
UNIVERSITY OF HAWAII AT MANOA
COLLEGES OF ARTS AND SCIENCES
COLLEGE OF SOCIAL SCIENCES
DEPARTMENT OF COMMUNICATIONS

POSITION ORGANIZATION CHART

CHART III-b

SCHOOL OF COMMUNICATIONS					
Chair (appointed from faculty positions)					
Secretary II, SR-14, #13807					1.00
Clerk-Typist II, SR-08, #48445					1.00
Faculty Positions:					14.00
Full time:	#82279,	82280,	82294,	82500,	82602,
	82871,	82946,	82982,	83302,	84217,
	84505,	84792,	88169,	88619	
Graduate Assistants:					3.00
	#88210,	88506,	88534,	88581	88607,
	88681				
					----- 19.00

Approved:

Richard Dubanoski

JUL - 1 2006

Richard Dubanoski, Dean
College of Social Sciences

General Funds 19.00

CHART UPDATED

DATE JUL - 1 2006

OFFICE OF THE DEAN

STATE OF HAWAII
UNIVERSITY OF HAWAII
UNIVERSITY OF HAWAII AT MANOA
COLLEGES OF ARTS AND SCIENCES
COLLEGE OF SOCIAL SCIENCES
DEPARTMENT OF ECONOMICS

POSITION ORGANIZATION CHART

CHART III-c

DEPARTMENT OF ECONOMICS					
Chair (appointed from faculty positions)					
Secretary II, SR-14, #14362					1.00
Clerk-Typist II, SR-10, #14360					1.00
Faculty Positions:					19.00
<u>Full time:</u>	#82192,	82286,	82323,	82679,	82777,
	82838,	83023,	83411,	83484,	83611,
	83748,	83753,	83943,	84047,	84054,
	84815,	84841,	85027		
<u>Part time:</u>	#83650 (.50), 84816 (.50)				
Graduate Assistants:					4.50
	#88061,	88175,	88193,	88233,	88248
	88262,	88420,	88517,	88631	
					----- 25.50

Approved:

Richard Dubanoski

JUL - 1 2006

Richard Dubanoski, Dean
College of Social Sciences

General Funds 25.50

CHART UPDATED

DATE JUL - 1 2006

OFFICE OF THE DEAN

STATE OF HAWAII
UNIVERSITY OF HAWAII
UNIVERSITY OF HAWAII AT MANOA
COLLEGES OF ARTS AND SCIENCES
COLLEGE OF SOCIAL SCIENCES
DEPARTMENT OF ETHNIC STUDIES

POSITION ORGANIZATION CHART

CHART III-d

DEPARTMENT OF ETHNIC STUDIES		
Chair (appointed from faculty positions)		
Secretary II, SR-14, #24006		1.00
Faculty Positions:		
<u>Full time:</u>	#83195, 84790, 84801, 84805, 84813, 84819, 85586	8.50
<u>Part time:</u>	#84807 (.50), 84810 (.50), 84822 (.50)	
Graduate Assistants:		
	#88217	0.50
		----- 10.00

General Funds 10.00

CHART UPDATED
DATE JUL - 1 2006

OFFICE OF THE DEAN

STATE OF HAWAII
UNIVERSITY OF HAWAII
UNIVERSITY OF HAWAII AT MANOA
COLLEGES OF ARTS AND SCIENCES
COLLEGE OF SOCIAL SCIENCES
DEPARTMENT OF GEOGRAPHY

POSITION ORGANIZATION CHART

CHART III-e

DEPARTMENT OF GEOGRAPHY

Chair (appointed from faculty positions)

Secretary II, SR-14, #14358 1.00

Clerk-Typist II, SR-08, #18580 1.00

Educational Sp, PBB, #80641 1.00

Faculty Positions: 14.00

Full time: #82328, 82332, 82680, 82681, 82708,
83935, 84209, 84254, 84478, 84518,
84565, 84868 84917, 85298

Graduate Assistants: 5.00

#88065, 88103, 88110, 88140, 88189
88232, 88416, 88446 84864, 88620

22.00

Approved:

Richard Dubanoski

JUL - 1 2006

Richard Dubanoski, Dean
College of Social Sciences

General Funds 22.00

CHART UPDATED

DATE JUL - 1 2006

OFFICE OF THE DEAN

STATE OF HAWAII
UNIVERSITY OF HAWAII
UNIVERSITY OF HAWAII AT MANOA
COLLEGES OF ARTS AND SCIENCES
COLLEGE OF SOCIAL SCIENCES
DEPARTMENT OF POLITICAL SCIENCE

POSITION ORGANIZATION CHART

CHART III-f

DEPARTMENT OF POLITICAL SCIENCE					
Chair (appointed from faculty positions)					
Secretary II, SR-14, #11112					1.00
Adm & Fiscal Support Sp, PBA, #77635					1.00
Faculty Positions:					22.50
Full time:	#82145,	82278,	82317,	82913,	83085,
	83194,	83311,	83370,	83621,	83778,
	83858,	84023,	84042,	84059,	84109,
	84121,	84130,	84234,	84556,	84800,
	88113				
Part time:	#82823 (.50),	83277 (.50),	88549 (.50)		
Graduate Assistants:					4.00
	#88076,	88090,	88238,	88336,	88407,
	88676,	84880,	85507		
					28.50

Approved:

Richard Dubanoski

JUL - 1 2006

Richard Dubanoski, Dean
College of Social Sciences

General Funds 28.50

CHART UPDATED

DATE JUL - 1 2006

OFFICE OF THE DEAN

STATE OF HAWAII
UNIVERSITY OF HAWAII
UNIVERSITY OF HAWAII AT MANOA
COLLEGES OF ARTS AND SCIENCES
COLLEGE OF SOCIAL SCIENCES
POPULATION STUDIES PROGRAM

POSITION ORGANIZATION CHART

CHART III-g

POPULATION STUDIES PROGRAM	
Director (appointed from faculty positions from other departments within the College)	0.00
Faculty Position	0.00
<u>Part Time:</u>	

	0.00

Approved: Richard Dubanoski JUL - 1 2006
Richard Dubanoski, Dean
College of Social Sciences

General Funds 0.00

CHART UPDATED
DATE JUL - 1 2006

OFFICE OF THE DEAN

STATE OF HAWAII
UNIVERSITY OF HAWAII
UNIVERSITY OF HAWAII AT MANOA
COLLEGES OF ARTS AND SCIENCES
COLLEGE OF SOCIAL SCIENCES
DEPARTMENT OF PSYCHOLOGY

POSITION ORGANIZATION CHARTS

CHART III-h

DEPARTMENT OF PSYCHOLOGY					
Chair (appointed from faculty positions)					
Director, Clinical Studies (appointed from faculty positions)					
Secretary II, SR-14, #12856					1.00
Clerk-Stenographer III, SR-11, #19052					1.00
Educational Sp, PBB, #80638					1.00
Faculty Positions:					26.00
Full time:	#82114,	82198,	82398,	82412,	82471,
	82534,	82537,	82615,	82629,	82916,
	83092,	83110,	83507,	83626,	84131,
	84346,	84416,	84491,	84497,	84791,
	84827,	84866,	85075,	85450,	85881,
	88005				
Graduate Assistants:					4.00
	#85148,	88046,	88060,	88252,	88320
	88362,	88511,	88559		
					----- 33.00

Approved:

Richard Dubanoski

JUL - 1 2006

Richard Dubanoski, Dean
College of Social Sciences

General Funds 33.00

CHART UPDATED

DATE JUL - 1 2006

OFFICE OF THE DEAN

STATE OF HAWAII
UNIVERSITY OF HAWAII
UNIVERSITY OF HAWAII AT MANOA
COLLEGES OF ARTS AND SCIENCES
COLLEGE OF SOCIAL SCIENCES
PUBLIC ADMINISTRATION PROGRAM

POSITION ORGANIZATION CHART

Chart III-i

PUBLIC ADMINISTRATION PROGRAM				
Director (appointed from faculty positions)				
Faculty Positions:				6.00
<u>Full time:</u>	#82905,	83162,	83178, 84319, 84818,	
	84903			
Graduate Assistants:				0.50
	#88208			

				6.50

General Funds 6.50

CHART UPDATED

DATE JUL - 1 2006

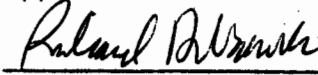
OFFICE OF THE DEAN

STATE OF HAWAII
UNIVERSITY OF HAWAII
UNIVERSITY OF HAWAII AT MANOA
COLLEGES OF ARTS AND SCIENCES
COLLEGE OF SOCIAL SCIENCES
DEPARTMENT OF SOCIOLOGY

POSITION ORGANIZATION CHART

CHART III-j

DEPARTMENT OF SOCIOLOGY					
Chair (appointed from faculty positions)					
Secretary II, SR-14, #13485					1.00
Adm & Fiscal Support Sp, PBA, #77562					1.00
Faculty Positions:					18.50
Full time:	#82084,	82097,	82125,	82204,	82207,
	82605,	83713,	84076,	84237,	84286,
	84456,	84502,	84504,	84575,	84616,
	84642,	84643,	85806		
Part time:	#84823 (.50)				
Graduate Assistants:					4.50
	#88008,	88100,	88182,	88408,	88485,
	88498,	88533,	88616	88392	
					----- 25.00

Approved:  JUL - 1 2006
Richard Dubanoski, Dean
College of Social Sciences

General Funds 25.00

CHART UPDATED
DATE JUL - 1 2006

OFFICE OF THE DEAN

STATE OF HAWAII
UNIVERSITY OF HAWAII
UNIVERSITY OF HAWAII AT MANOA
COLLEGES OF ARTS AND SCIENCES
COLLEGE OF SOCIAL SCIENCES
DEPARTMENT OF URBAN AND REGIONAL PLANNING

POSITION ORGANIZATION CHART

CHART III-k

DEPARTMENT OF URBAN AND REGIONAL PLANNING		
Chair (appointed from faculty positions)		
Secretary II, SR-14, #15640		1.00
Faculty Positions:		8.00
Full time: #82377, 82539, 83624, 84060, 84351, 84522, 85736		
Part time: #84811 (.50), 82338 (.50)		
		----- 9.00

Approved:

Richard Dubanoski

JUL - 1 2006

Richard Dubanoski, Dean
College of Social Sciences

General Funds 9.00

CHART UPDATED

DATE JUL - 1 2006

OFFICE OF THE DEAN

STATE OF HAWAII
UNIVERSITY OF HAWAII
UNIVERSITY OF HAWAII AT MANOA
COLLEGES OF ARTS AND SCIENCES
COLLEGE OF SOCIAL SCIENCES
WOMEN'S STUDIES PROGRAM

POSITION ORGANIZATION CHART

CHART III-I

WOMEN'S STUDIES PROGRAM

Director (appointed from faculty positions)

Secretary II, SR-14, #31328 1.00

Faculty Positions: 7.00

Full time: #82870, 83050, 84200, 84804, 84817,
86071,

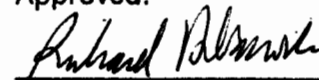
Part time: #84057 (.50), #85962 (.50)

Graduate Assistants: 0.50

#88268

8.50

Approved:



JUL - 1 2006

Richard Dubanoski, Dean
College of Social Sciences

General Funds 8.50

CHART UPDATED

DATE JUL - 1 2006

OFFICE OF THE DEAN

STATE OF HAWAII
 UNIVERSITY OF HAWAII
 UNIVERSITY OF HAWAII AT MANOA
 COLLEGES OF ARTS AND SCIENCES
 COLLEGE OF SOCIAL SCIENCES
 SPARK M. MATSUNAGA INSTITUTE FOR PEACE

POSITION ORGANIZATION CHART

CHART III-m

SPARK M. MATSUNAGA INSTITUTE FOR PEACE		
Director (appointed from faculty positions)		
Adm & Fiscal Support Sp, PBA, #77465		1.00
Educational Sp, PBB, #80358		1.00
Faculty Positions:		2.00
<u>Full time:</u> #88112, 88732		
Graduate Assistants:		0.50
#88391		

		4.50

General Funds 4.50

CHART UPDATED

DATE JUL - 1 2006