

OFFICE OF UNIVERSITY OF HAWAII AT MANOA
CHANCELLOR

OFFICE OF THE VICE CHANCELLOR
FOR ACADEMIC AFFAIRS

OFFICE OF THE DEAN*
CHART XLI-A

STATE OF HAWAII
UNIVERSITY OF HAWAII
UNIVERSITY OF HAWAII AT MANOA
COLLEGE OF TROPICAL AGRICULTURE AND HUMAN
RESOURCES

ORGANIZATIONAL CHART
CHART XLI

OFFICE OF PUBLICATIONS AND INFORMATION
CHART XLI-B

OFFICE OF PLANNING AND MANAGEMENT SYSTEMS
CHART XLI-D

OFFICE OF ADMINISTRATIVE SERVICES
CHART XLI-C

OFFICE OF THE ASSOCIATE DEAN
FOR ACADEMIC AND
STUDENT AFFAIRS
CHART XLI-E

OFFICE OF THE ASSOCIATE DEAN
AND ASSOCIATE DIRECTOR
FOR RESEARCH
CHART XLI-F

OFFICE OF THE ASSOCIATE DEAN
AND ASSOCIATE DIRECTOR
FOR COOPERATIVE EXTENSION
CHART XLI-G

COUNTY ADMINISTRATION
CHART XLI-Q,R,S,T,U,V,W

EXTENSION PROGRAMS
CHART XLI-N

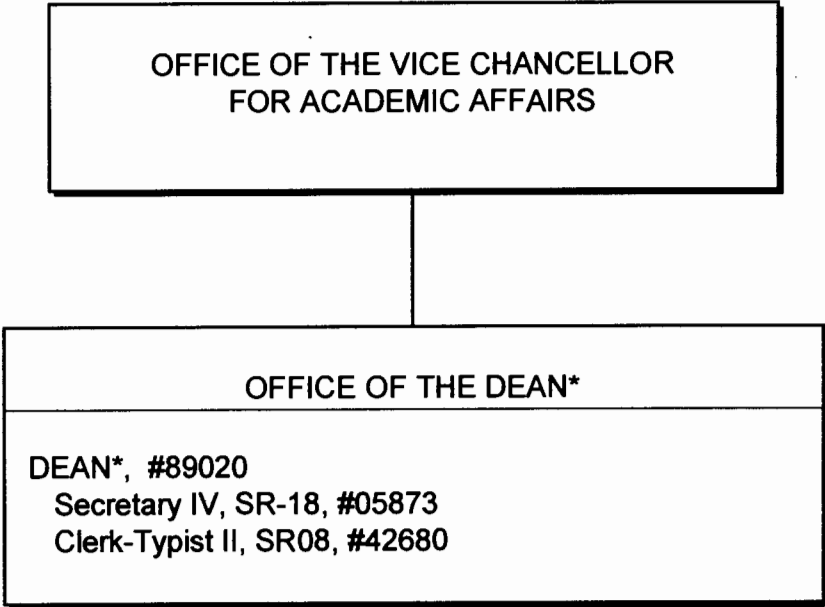
| | |
|--|-------------|
| FAMILY AND CONSUMER SCIENCES | CHART XLI-H |
| CENTER ON THE FAMILY | CHART XLI-O |
| 4-H OFFICE | CHART XLI-P |
| HUMAN NUTRITION, FOOD AND ANIMAL SCIENCES | CHART XLI-I |
| MOLECULAR BIOSCIENCES AND BIOENGINEERING | CHART XLI-J |
| NATURAL RESOURCES & ENVIRONMENTAL MANAGEMENT | CHART XLI-K |
| PLANT AND ENVIRONMENTAL PROTECTION SCIENCES | CHART XLI-L |
| TROPICAL PLANT & SOIL SCIENCE | CHART XLI-M |

CHART UPDATED
DATE JUL - 1 2006

* & Director of Research and Cooperative Extension

STATE OF HAWAII
UNIVERSITY OF HAWAII
UNIVERSITY OF HAWAII AT MANOA
COLLEGE OF TROPICAL AGRICULTURE AND HUMAN
RESOURCES

OFFICE OF THE DEAN
POSITION ORGANIZATION CHART: XLI-A

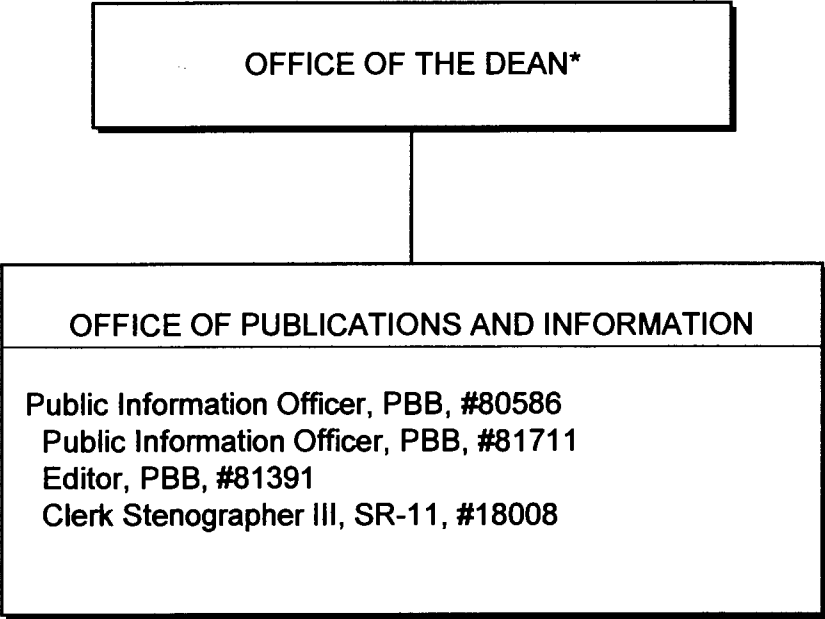


* & Director of Research and Cooperative Extension

CHART UPDATED
DATE JUL - 1 2006

STATE OF HAWAII
UNIVERSITY OF HAWAII
UNIVERSITY OF HAWAII AT MANOA
COLLEGE OF TROPICAL AGRICULTURE AND HUMAN RESOURCES

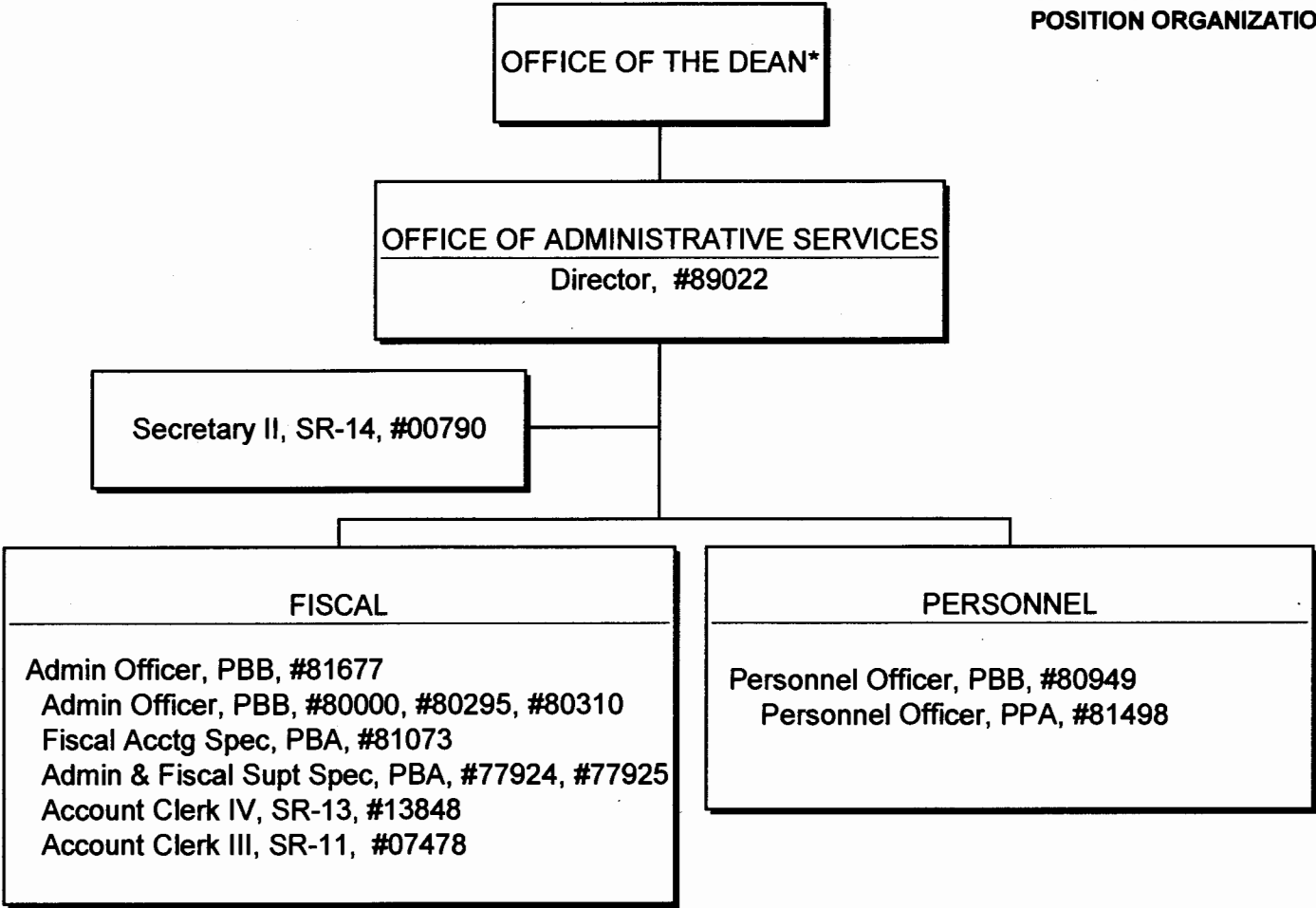
OFFICE OF PUBLICATIONS AND INFORMATION
POSITION ORGANIZATION CHART: XLI-B



*& Director of Research and Cooperative Extension

STATE OF HAWAII
UNIVERSITY OF HAWAII
UNIVERSITY OF HAWAII AT MANOA
COLLEGE OF TROPICAL AGRICULTURE AND HUMAN RESOURCES

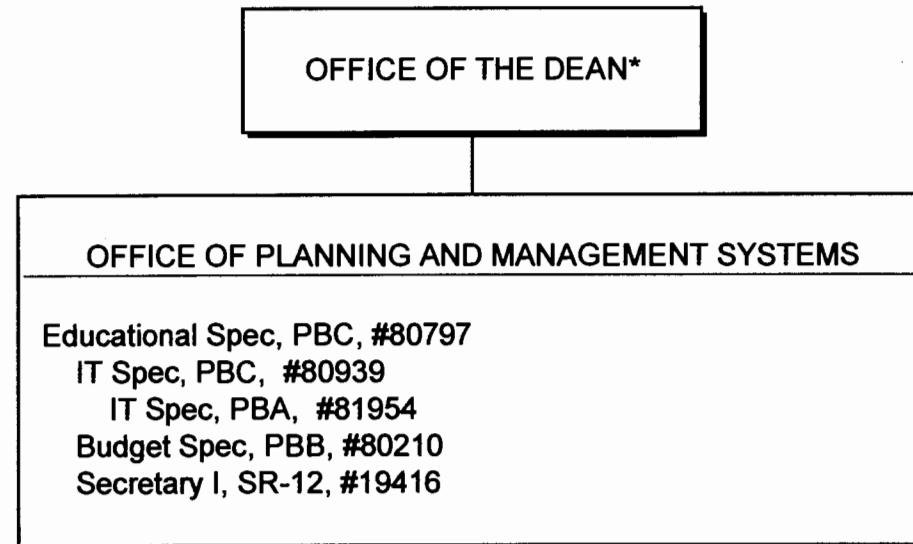
OFFICE OF ADMINISTRATIVE SERVICES
POSITION ORGANIZATION CHART: XLI-C



*& Director of Research and Cooperative Extension

STATE OF HAWAII
UNIVERSITY OF HAWAII
UNIVERSITY OF HAWAII AT MANOA
COLLEGE OF TROPICAL AGRICULTURE AND HUMAN RESOURCES

OFFICE OF PLANNING AND MANAGEMENT SYSTEMS
POSITION ORGANIZATION CHART: XLI-D

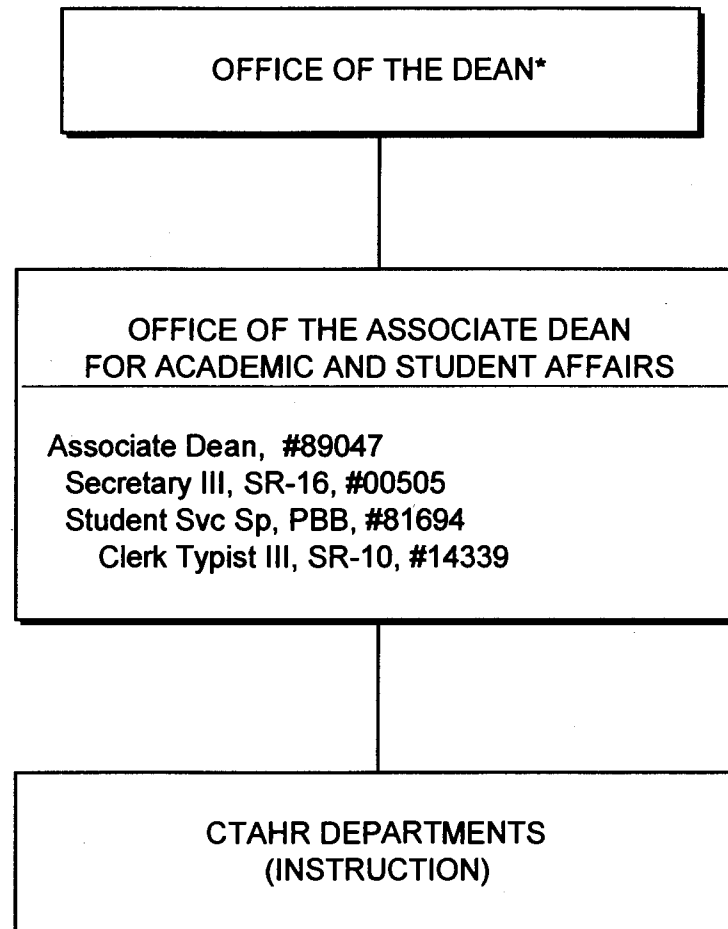


* & Director of Research and Cooperative Extension

CHART UPDATED
DATE JUL - 1 2006

STATE OF HAWAII
UNIVERSITY OF HAWAII
UNIVERSITY OF HAWAII AT MANOA
COLLEGE OF TROPICAL AGRICULTURE AND HUMAN RESOURCES

OFFICE OF THE ASSOCIATE DEAN FOR ACADEMIC AND STUDENT
AFFAIRS
POSITION ORGANIZATION CHART: XLI-E

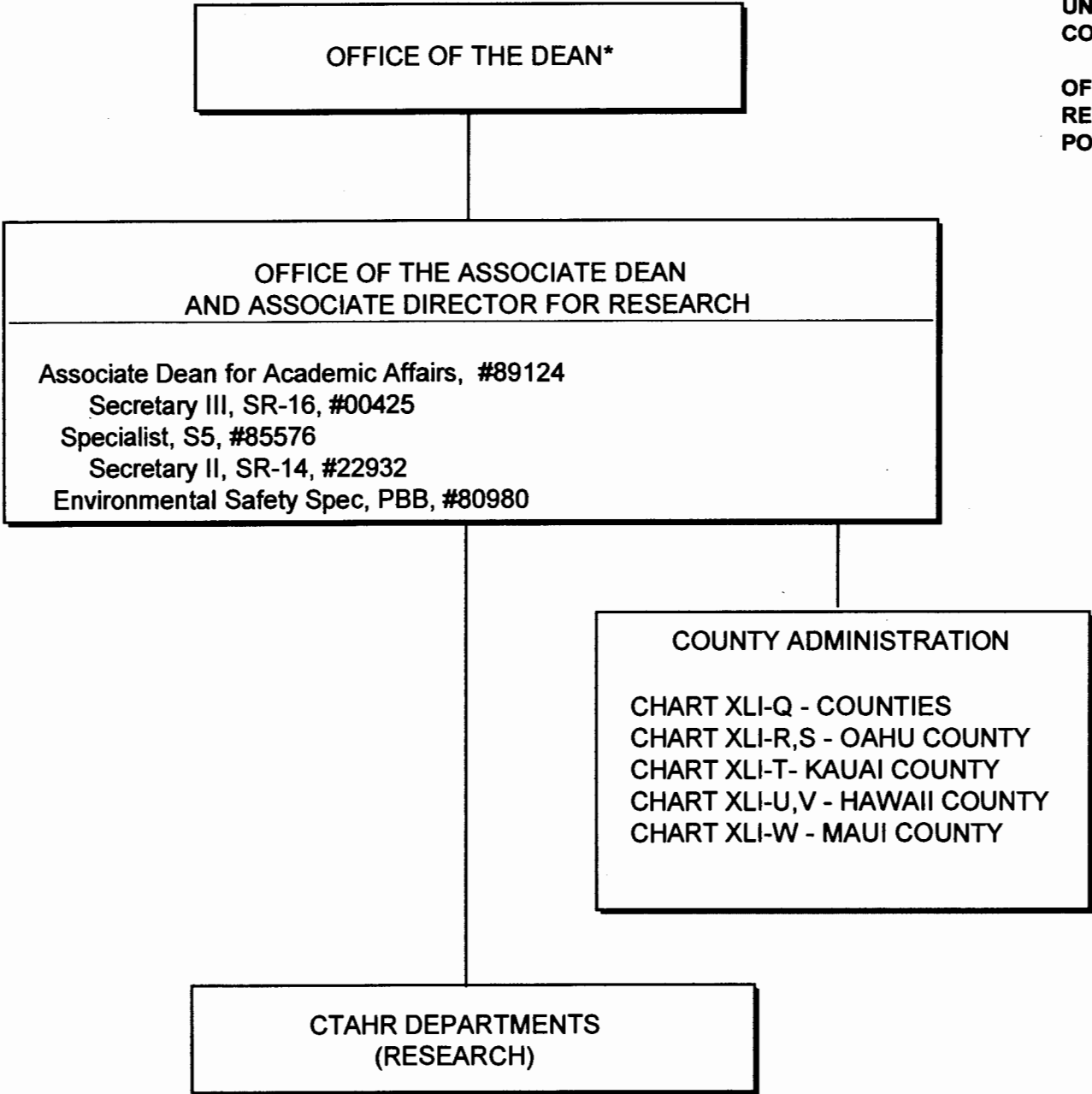


* & Director of Research and Cooperative Extension

CHART UPDATED
DATE JUL - 1 2006

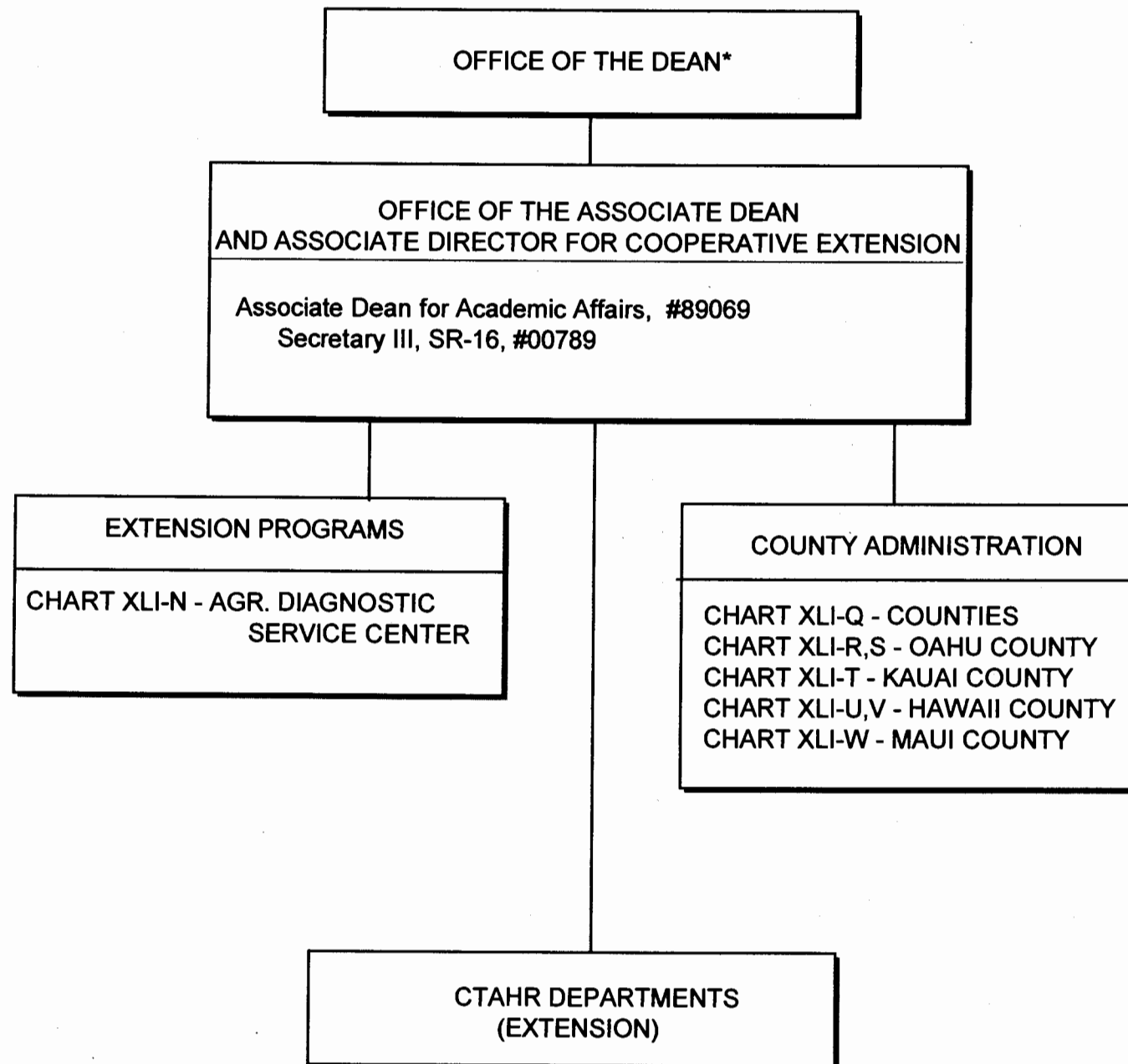
STATE OF HAWAII
UNIVERSITY OF HAWAII
UNIVERSITY OF HAWAII AT MANOA
COLLEGE OF TROPICAL AGRICULTURE AND HUMAN RESOURCES

OFFICE OF THE ASSOCIATE DEAN AND ASSOCIATE DIRECTOR FOR RESEARCH
POSITION ORGANIZATION CHART: XLI-F



*& Director of Research and Cooperative Extension

CHART UPDATED
DATE JUL - 1 2006



STATE OF HAWAII
UNIVERSITY OF HAWAII
UNIVERSITY OF HAWAII AT MANOA
COLLEGE OF TROPICAL AGRICULTURE AND HUMAN RESOURCES

OFFICE OF THE ASSOCIATE DEAN AND ASSOCIATE DIRECTOR
FOR COOPERATIVE EXTENSION
POSITION ORGANIZATION CHART: XLI-G

* & Director of Research and Cooperative Extension

CHART UPDATED

DATE JUL - 1 2006

STATE OF HAWAII
UNIVERSITY OF HAWAII
UNIVERSITY OF HAWAII AT MANOA
COLLEGE OF TROPICAL AGRICULTURE AND HUMAN RESOURCES

DEPARTMENT OF FAMILY AND CONSUMER SCIENCES
POSITION ORGANIZATION CHART: XLI-H

OFFICES OF THE ASSOCIATE DEANS AND DIRECTORS
FOR ACADEMIC AND STUDENT AFFAIRS,
RESEARCH, AND COOPERATIVE EXTENSION

DEPARTMENT OF FAMILY AND CONSUMER SCIENCES

Chairperson (Appointed from among faculty positions)

Secretary II, SR-14, #22849
Clerk-Steno II, SR-09, #21208
Clerk-Typist II, SR-08, #04108

Faculty 1/
Oahu

#82074, #82336, #82392, #82485, #82699, #82866, #82869, #82094, #83220,
#83242, #83525, #83553, #83666, #83765, #83843, #83968, #84070, #84082,
#84388, #84648, #84662, #84685, #84914, #85151, #85421, #85476

Hawaii

#82313, #82505, #83267, #84610

Kauai

#82175

Maui

#84913

Admin & Fiscal Supt Spec, PBA, #78061

Graduate Assistant, GA, #88134 (.50), #88410 (.50), #88576 (.50)

1/ Research FTE: 2.25, Extension FTE: 4.45, Instruction FTE: 14.60

OFFICES OF THE ASSOCIATE DEANS AND DIRECTORS
FOR ACADEMIC AND STUDENT AFFAIRS,
RESEARCH, AND COOPERATIVE EXTENSION

STATE OF HAWAII
UNIVERSITY OF HAWAII
UNIVERSITY OF HAWAII AT MANOA
COLLEGE OF TROPICAL AGRICULTURE AND HUMAN RESOURCES

DEPARTMENT OF HUMAN NUTRITION, FOOD AND ANIMAL
SCIENCES
POSITION ORGANIZATION CHART: XLI-I

DEPARTMENT OF HUMAN NUTRITION, FOOD AND ANIMAL SCIENCES

Chairperson (Appointed from among faculty positions)

Secretary II, SR-14, #00400

Clerk-Typist II, SR-08, #12195, #15513, #42682

Faculty ^{1/}

Oahu

#82090, #82107, #82248, #82529, #82865, #82945, #83017, #83510, #83633, #83742, #83811, #83830, #83862,

#84227, #84228, #84306, #84323, #84439, #84449, #84454, #84496, #84512, #84668, #84919, #84920, #87443, #87552

Maui

#83728, #84163

Hawaii

#84158, #84276, #84297

Kauai

#82363

Admin & Fiscal Supt Spec, PBA, #80386

Research Associate, PBB, #80410

Research Associate, PBA, #77092

IT Spec, PBB, #80037

Graduate Asst, GA-R, #88088 (.50), #88165 (.50), #88241 (.50), #88303 (.50), #88438 (.50), #88565 (.50)

Agr Research Technician VI, SR-18 #00428

Agr Research Technician V, SR-16, #00395, #00396, #00432, #11024

Agr Research Technician IV, SR-14, #00433

Agr Research Technician III, SR-11, #00418, #00434, #03712

Agr Research Aid II, SR-09, #00441

Equipment Operator III, BC-09, #00419

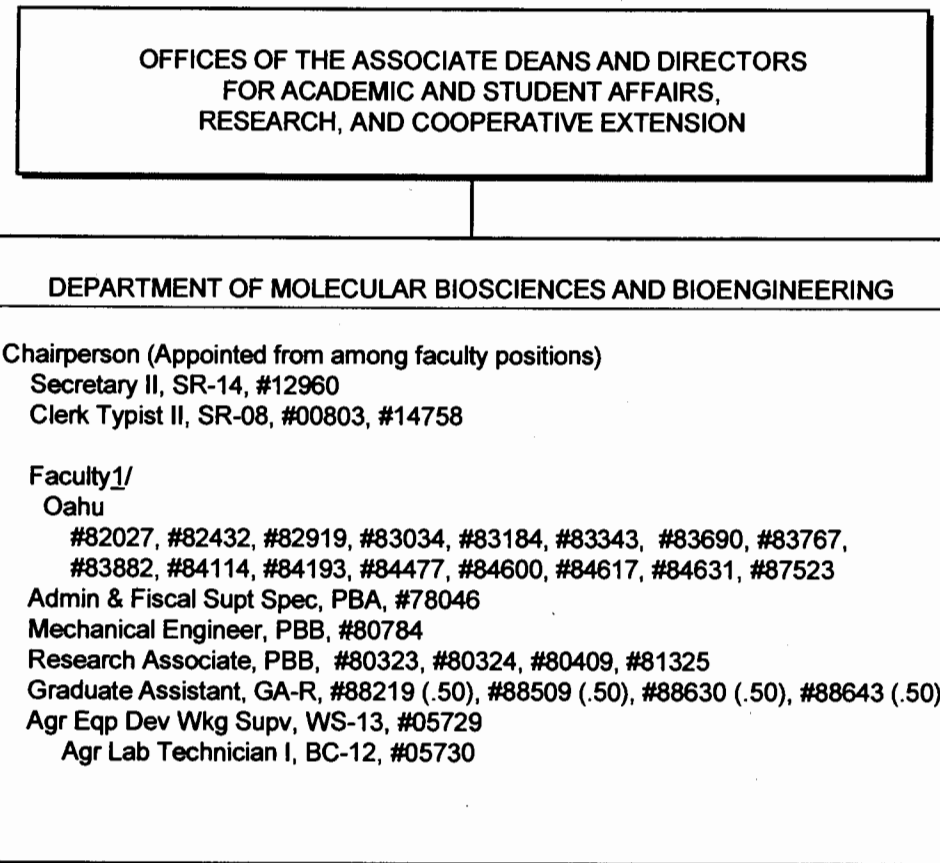
^{1/} Research FTE: 5.95, Extension FTE: 2.15, Instruction FTE: 10.45

CHART UPDATED

DATE JUL - 1 2006

STATE OF HAWAII
UNIVERSITY OF HAWAII
UNIVERSITY OF HAWAII AT MANOA
COLLEGE OF TROPICAL AGRICULTURE AND HUMAN RESOURCES

DEPARTMENT OF MOLECULAR BIOSCIENCES AND BIOSYSTEMS
ENGINEERING
POSITION ORGANIZATION CHART: XLI-J



^{1/} Research FTE: 5.50, Extension FTE: 1.10, Instruction FTE: 3.55

CHART UPDATED
DATE JUL - 1 2006

STATE OF HAWAII
UNIVERSITY OF HAWAII
UNIVERSITY OF HAWAII AT MANOA
COLLEGE OF TROPICAL AGRICULTURE AND HUMAN RESOURCES

DEPARTMENT OF NATURAL RESOURCES AND ENVIRONMENTAL
MANAGEMENT
POSITION ORGANIZATION CHART: XLI-K

OFFICES OF THE ASSOCIATE DEANS AND DIRECTORS
FOR ACADEMIC AND STUDENT AFFAIRS,
RESEARCH, AND COOPERATIVE EXTENSION

DEPARTMENT OF NATURAL RESOURCES AND ENVIRONMENTAL MANAGEMENT

Chairperson (Appointed from among faculty positions)

Secretary II, SR-14, #05838

Clerk Typist II, SR-08, #00397, #42681

Faculty 1/

Oahu

#82058, #82516, #82598, #82772, #83117, #83629, #83770, #83824, #83851,
#84120, #84171, #84216, #84488, #84627, #84872, #84915

Hawaii

#82373, #83459

Educational Spec. PBB, #80391

Research Associate, PBA, #80320

Graduate Assistant, GA #88028 (.50), #88181 (.50), #88431 (.50), #88494 (.50)

Agr Research Technician IV, SR-14, #00398

1/ Research FTE: 6.35, Extension FTE: 2.40, Instruction FTE: 3.70

CHART UPDATED
DATE JUL - 1 2006

OFFICES OF THE ASSOCIATE DEANS AND DIRECTORS
FOR ACADEMIC AND STUDENT AFFAIRS,
RESEARCH, AND COOPERATIVE EXTENSION

STATE OF HAWAII
UNIVERSITY OF HAWAII
UNIVERSITY OF HAWAII AT MANOA
COLLEGE OF TROPICAL AGRICULTURE AND HUMAN RESOURCES

DEPARTMENT OF PLANT AND ENVIRONMENTAL PROTECTION
SCIENCES
POSITION ORGANIZATION CHART: XLI-L

DEPARTMENT OF PLANT AND ENVIRONMENTAL PROTECTION SCIENCES

Chairperson (Appointed from among faculty positions)

Secretary II, SR-14, #07477

Clerk-Typist II, SR-08, #00794, #15509

Faculty 1/

Oahu

#82047, #82139, #82238, #82550, #82687, #82976, #83067,
#83320, #83513, #83884, #84006, #84041, #84138, #84316,
#84489, #84911, #85510, #85547

Maui

#86034, #85530

Hawaii

#82985, #82722, #83255, #83462, #83542, #85538

Kauai

#83816, #83840, #85505

Admin & Fiscal Support, PBA, #77864

Educational Specialist, PBB, #80250

Research Associate, PBB, #80385, #80388, #81178, #81311

Research Associate, PBA, #81313

Graduate Assistant, GA, #88486 (.50), #84932 (.50)

Agr Research Technician V, SR-16, #00442

Agr Research Technician IV, SR-14, #24270

Agr Research Technician III, SR-11, #24269

1/ Research FTE: 2.66, Extension FTE: 4.20, Instruction FTE: 3.05

CHART UPDATED
DATE JUL - 1 2006

OFFICES OF THE ASSOCIATE DEANS AND DIRECTORS
FOR ACADEMIC AND STUDENT AFFAIRS,
RESEARCH, AND COOPERATIVE EXTENSION

STATE OF HAWAII
UNIVERSITY OF HAWAII
UNIVERSITY OF HAWAII AT MANOA
COLLEGE OF TROPICAL AGRICULTURE AND HUMAN
RESOURCES

DEPARTMENT OF TROPICAL PLANT AND SOIL SCIENCE
POSITION ORGANIZATION CHART: XLI-M

DEPARTMENT OF TROPICAL PLANT AND SOIL SCIENCE

Chairperson (Appointed from among faculty positions)

Secretary II, SR-14, #00793

Clerk-Steno III, SR-11, #00399, #15512

Faculty 1/

Oahu

#82023, #82181, #82240, #82464, #82704, #82747, #83142, #83159,
#83260, #83304, #83388, #83682, #83740, #83785, #83938, #84067,
#84321, #84408, #84420, #84481, #84501, #84640, #84916, #85555

Maui

#82881, #83848, #84075, #84530, #85477, #87584

Hawaii

#82758, #83054, #82951, #83073, #83286, #83515, #84354, #85542

Kauai

#82196, #84500

Admin & Fiscal Support, PBA, #77795

Educational Specialist, PBB, #81362

Research Associate, PBB, #80270, #80313

Graduate Assistant, GA, #88171 (.50), #88423 (.50)

Agr Research Technician V, SR-16, #11019

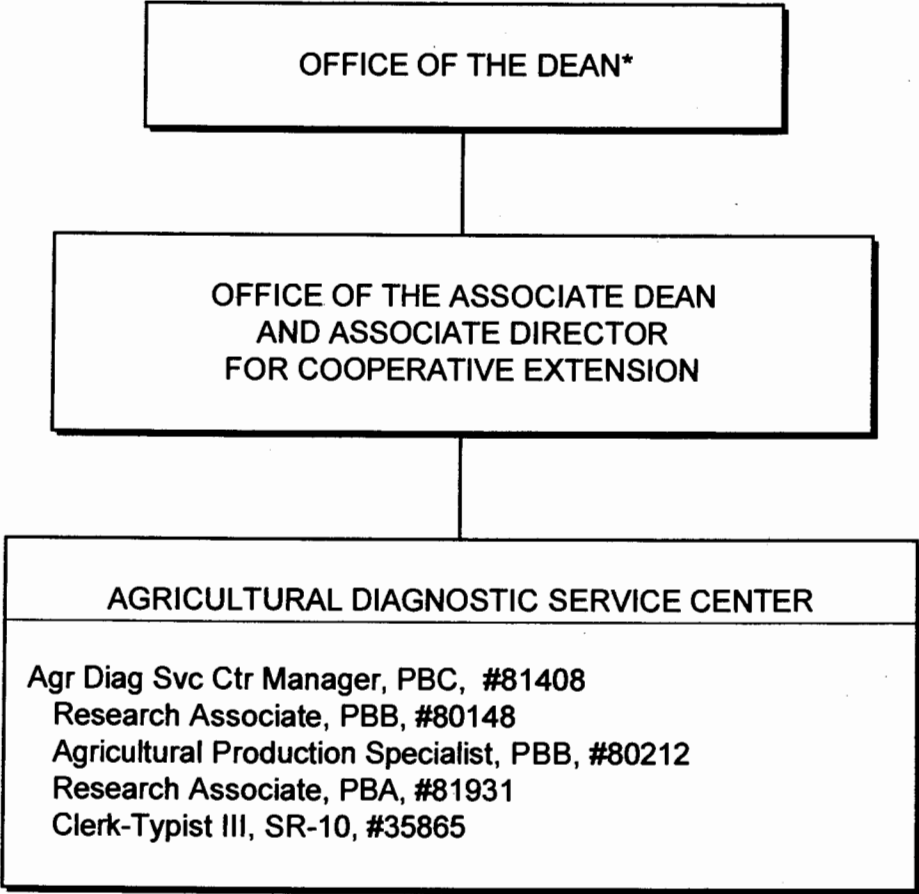
Agr Research Technician IV, SR-14, #05392, #00397

1/Research FTE: 6.25, Extension FTE: 6.06, Instruction FTE: 3.77

CHART UPDATED
DATE JUL - 1 2006

STATE OF HAWAII
UNIVERSITY OF HAWAII
UNIVERSITY OF HAWAII AT MANOA
COLLEGE OF TROPICAL AGRICULTURE AND HUMAN RESOURCES

AGRICULTURAL DIAGNOSTIC SERVICE CENTER
POSITION ORGANIZATION CHART: XLI-N



* & Director of Research and Cooperative Extension

CHART UPDATED
DATE JUL - 1 2006

STATE OF HAWAII
UNIVERSITY OF HAWAII
UNIVERSITY OF HAWAII AT MANOA
COLLEGE OF TROPICAL AGRICULTURE AND HUMAN RESOURCES

CENTER ON THE FAMILY
POSITION ORGANIZATION CHART: XLI-O

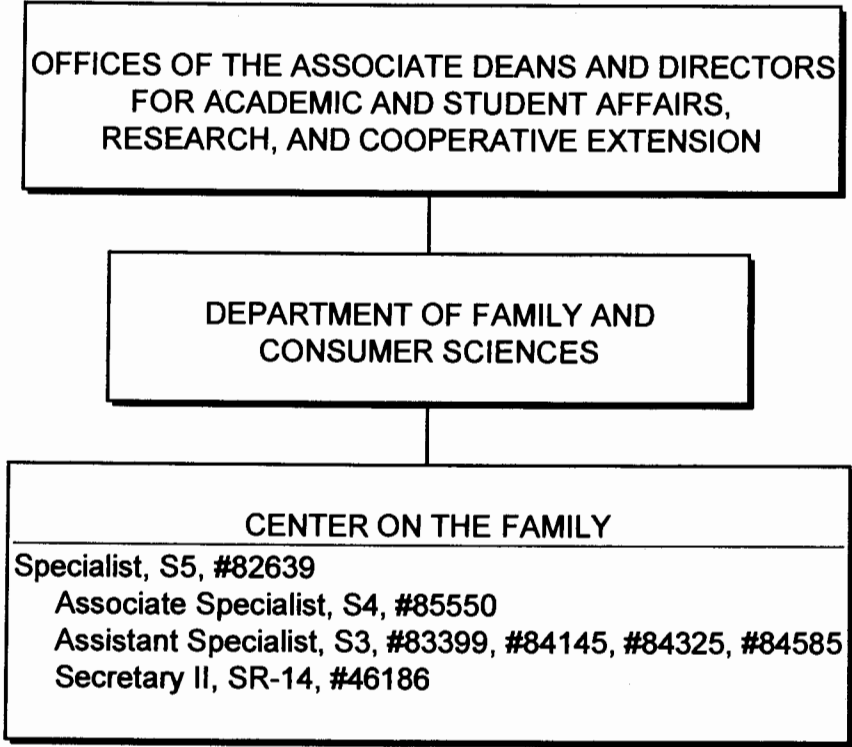


CHART UPDATED
JUL - 1 2006
DATE _____

STATE OF HAWAII
UNIVERSITY OF HAWAII
UNIVERSITY OF HAWAII AT MANOA
COLLEGE OF TROPICAL AGRICULTURE AND HUMAN RESOURCES

4-H OFFICE
POSITION ORGANIZATION CHART: XLI-P

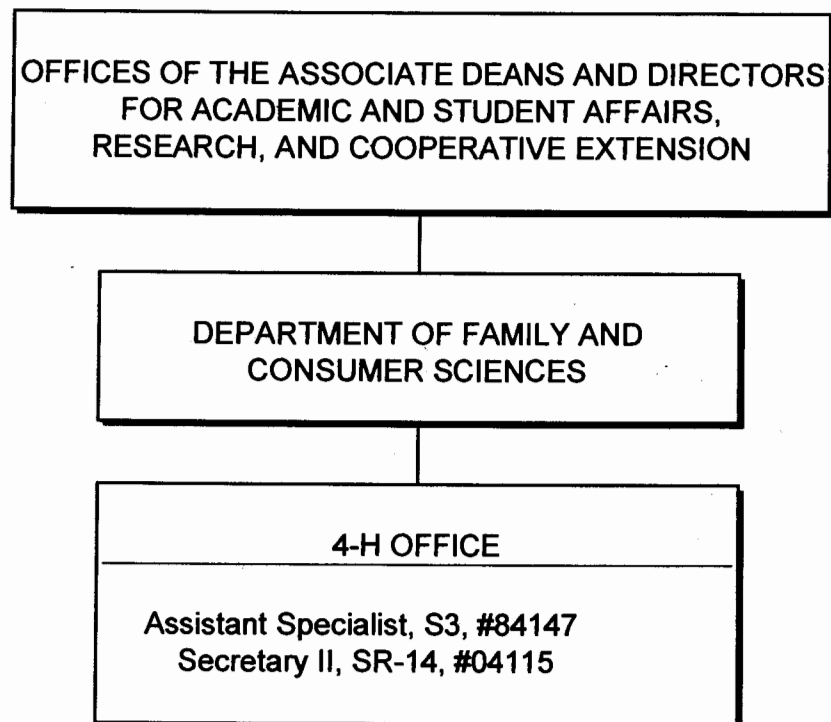
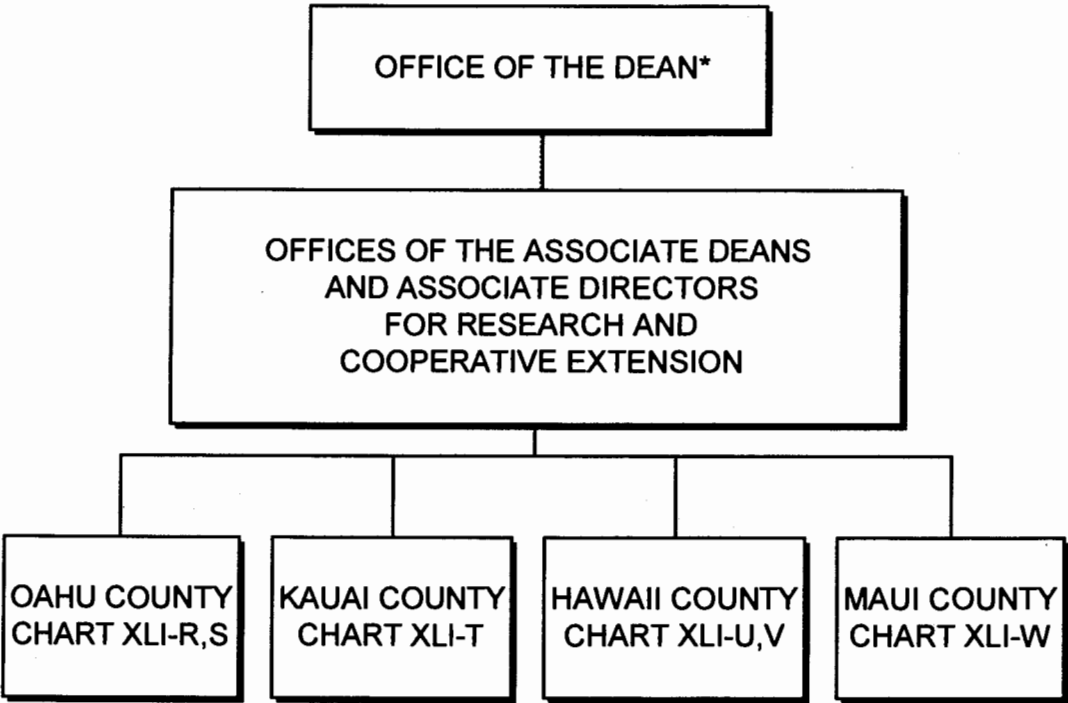


CHART UPDATED
DATE JUL - 1 2006

STATE OF HAWAII
UNIVERSITY OF HAWAII
UNIVERSITY OF HAWAII AT MANOA
COLLEGE OF TROPICAL AGRICULTURE AND HUMAN RESOURCES

COUNTY ADMINISTRATION
POSITION ORGANIZATION CHART: XLI-Q



*& Director of Cooperative Science & Education

STATE OF HAWAII
UNIVERSITY OF HAWAII
UNIVERSITY OF HAWAII AT MANOA
COLLEGE OF TROPICAL AGRICULTURE AND HUMAN RESOURCES

OAHU COUNTY
POSITION ORGANIZATION CHART: XLI-R

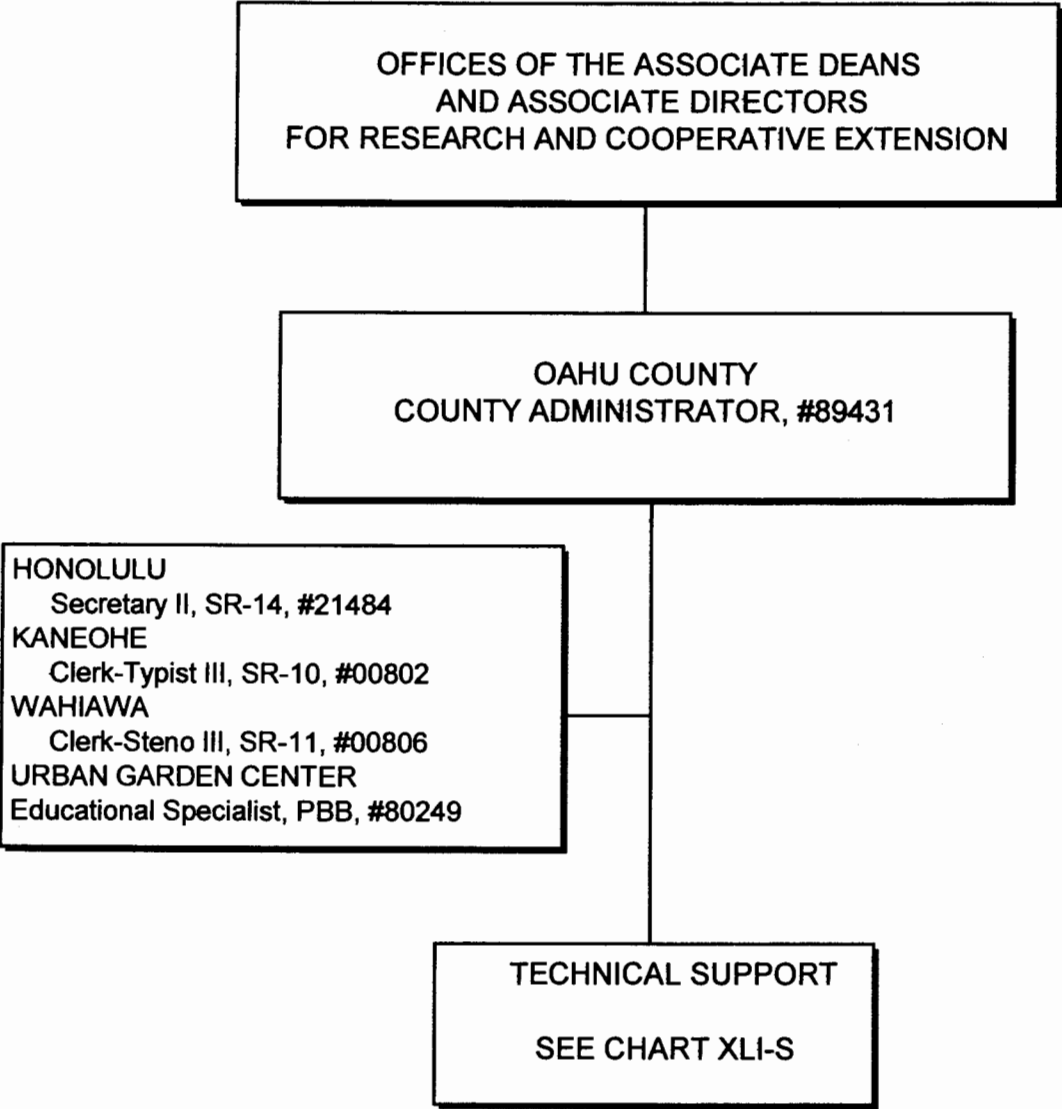


CHART UPDATED
DATE JUL - 1 2006

STATE OF HAWAII
UNIVERSITY OF HAWAII
UNIVERSITY OF HAWAII AT MANOA
COLLEGE OF TROPICAL AGRICULTURE
AND HUMAN RESOURCES

OAHU COUNTY - TECHNICAL SUPPORT
POSITION ORGANIZATION CHART: XLI-S

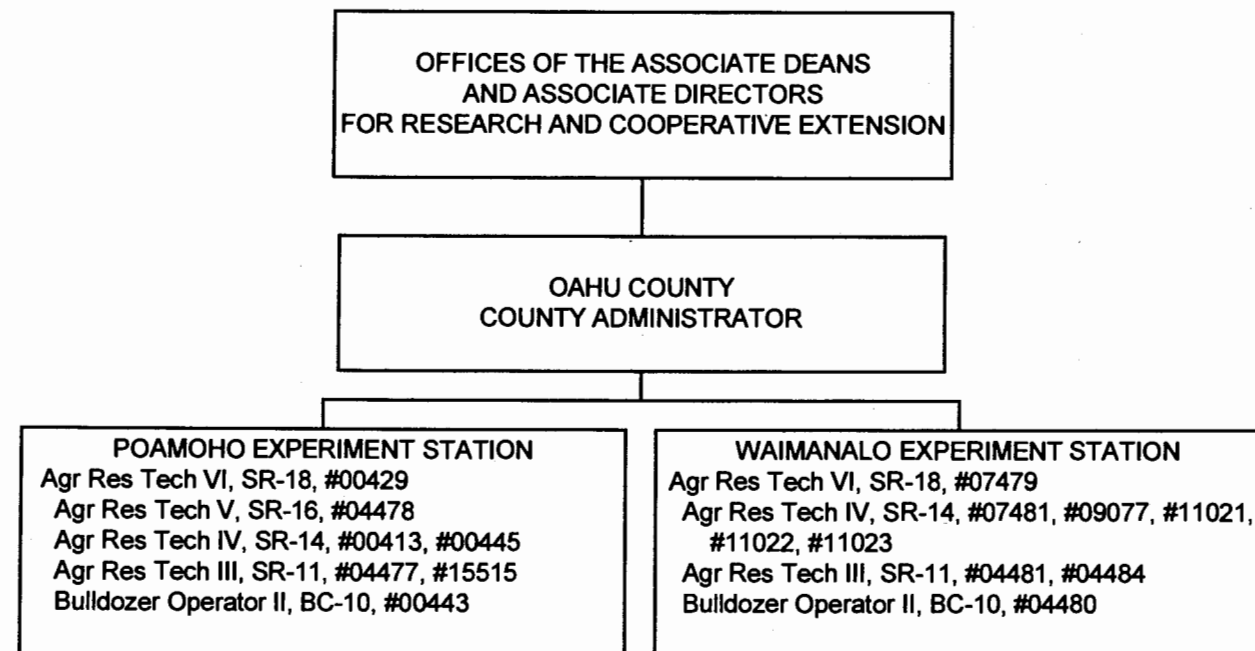


CHART UPDATED
DATE JUL - 1 2006

OFFICES OF THE ASSOCIATE DEANS
AND ASSOCIATE DIRECTORS
FOR RESEARCH AND COOPERATIVE EXTENSION

STATE OF HAWAII
UNIVERSITY OF HAWAII
UNIVERSITY OF HAWAII AT MANOA
COLLEGE OF TROPICAL AGRICULTURE AND HUMAN RESOURCES

KAUAI COUNTY
POSITION ORGANIZATION CHART: XLI-T

KAUAI COUNTY
COUNTY ADMINISTRATOR
#89216

LIHUE
Secretary II, SR-14, #04003
KAPAA
Clerk-Steno III, SR-11, #13872

TECHNICAL SUPPORT
KAPAA
Agr Res Tech VI, SR-18, #12753
Agr Res Tech IV, SR-14, #12102, #12758
Agr Res Tech III, SR-11, #12760, #12761, #14344

CHART UPDATED
JUL - 1 2006
DATE

OFFICES OF THE ASSOCIATE DEANS
AND ASSOCIATE DIRECTORS
FOR RESEARCH AND COOPERATIVE EXTENSION

HAWAII COUNTY
COUNTY ADMINISTRATOR, #89213

KOMOHANA
Clerk-Steno III, SR-11, #09084
Clerk-Typist II, SR-08, #00791

BEAUMONT
Secretary II, SR-14, #13871

KONA
Clerk-Typist III, SR-10, #00797
Kamuela
Clerk-Steno III, SR-11, #00799

TECHNICAL SUPPORT
SEE CHART XLI-V

STATE OF HAWAII
UNIVERSITY OF HAWAII
UNIVERSITY OF HAWAII AT MANOA
COLLEGE OF TROPICAL AGRICULTURE AND HUMAN RESOURCES

HAWAII COUNTY
POSITION ORGANIZATION CHART: XLI-U

CHART UPDATED
DATE JUL - 1 2006

OFFICES OF THE ASSOCIATE DEANS
AND ASSOCIATE DIRECTORS
FOR RESEARCH AND COOPERATIVE EXTENSION

HAWAII COUNTY
COUNTY ADMIN, #89213
Educational Spec, PBB, #80311

STATE OF HAWAII
UNIVERSITY OF HAWAII
UNIVERSITY OF HAWAII AT MANOA
COLLEGE OF TROPICAL AGRICULTURE AND HUMAN RESOURCES

HAWAII COUNTY - TECHNICAL SUPPORT
POSITION ORGANIZATION CHART: XLI-V

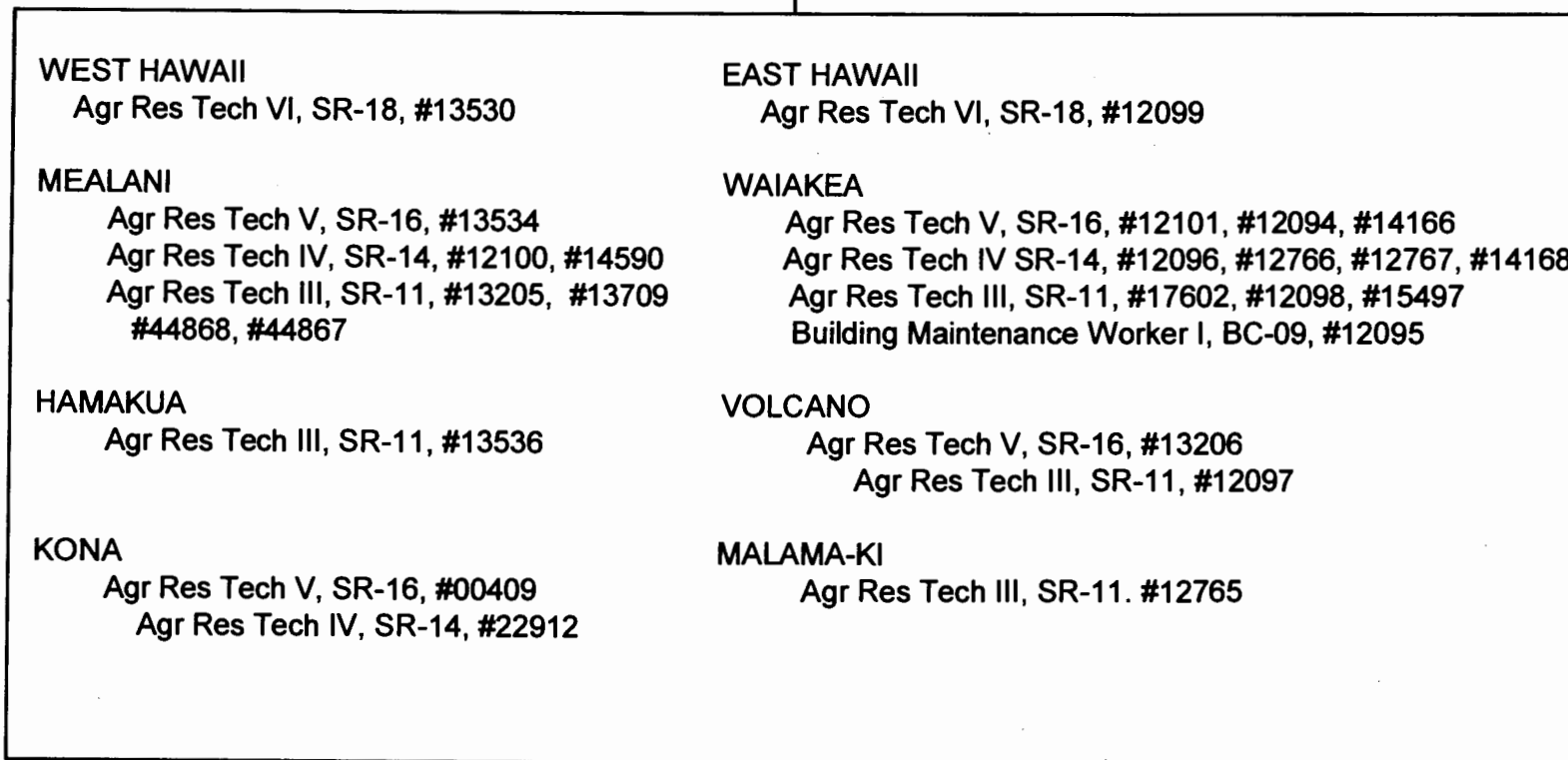


CHART UPDATED
JUL - 1 2006
DATE _____

OFFICES OF THE ASSOCIATE DEANS
AND ASSOCIATE DIRECTORS
FOR RESEARCH AND COOPERATIVE EXTENSION

MAUI COUNTY
COUNTY ADMINISTRATOR, #89215

KAHULUI
Secretary II, SR-14, #00792
Clerk-Typist II, SR-08, #42422
KULA
Clerk-Steno III, SR-11, #13714
MOLOKAI
Clerk-Steno III, SR-11, #28798

TECHNICAL SUPPORT
KULA
Agr Res Tech VI, SR-18, #00415
Agr Res Tech V, SR-16, #12901
Agr Res Tech IV, SR-14, #00436, #12897, #12898,
#12899, #12902
Agr Res Tech III, SR-11, #00404, #00406, #12900
MOLOKAI
Agr Res Tech IV, SR -14, #36749

STATE OF HAWAII
UNIVERSITY OF HAWAII
UNIVERSITY OF HAWAII AT MANOA
COLLEGE OF TROPICAL AGRICULTURE AND HUMAN RESOURCES

MAUI COUNTY
POSITION ORGANIZATION CHART: XLI-W

CHART UPDATED
DATE JUL - 1 2006