

Position Organization Chart

Chart I

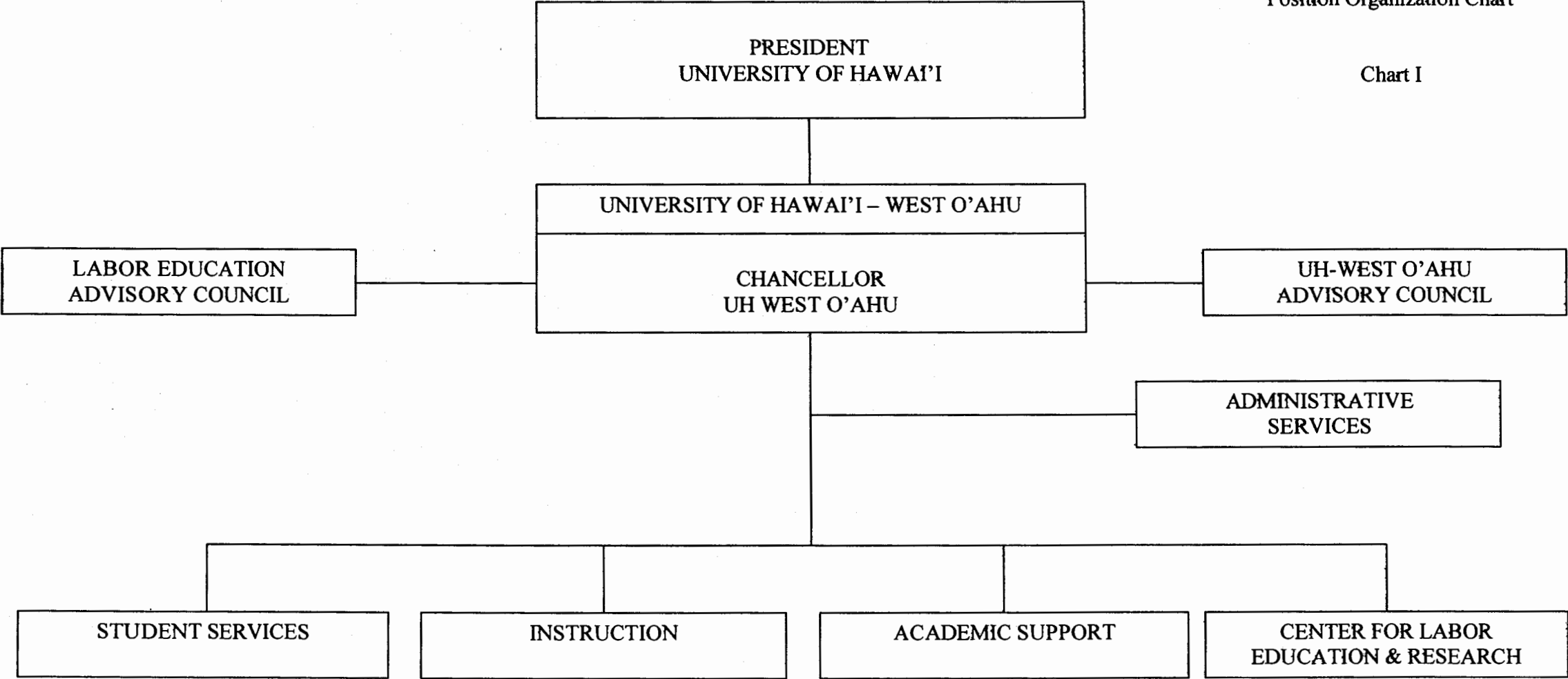


CHART UPDATED

DATE JUL - 1 2006

State of Hawai'i
University of Hawai'i
University of Hawai'i - West O'ahu
Office of the Chancellor

Position Organization Chart

Chart II

General Funds 5.00

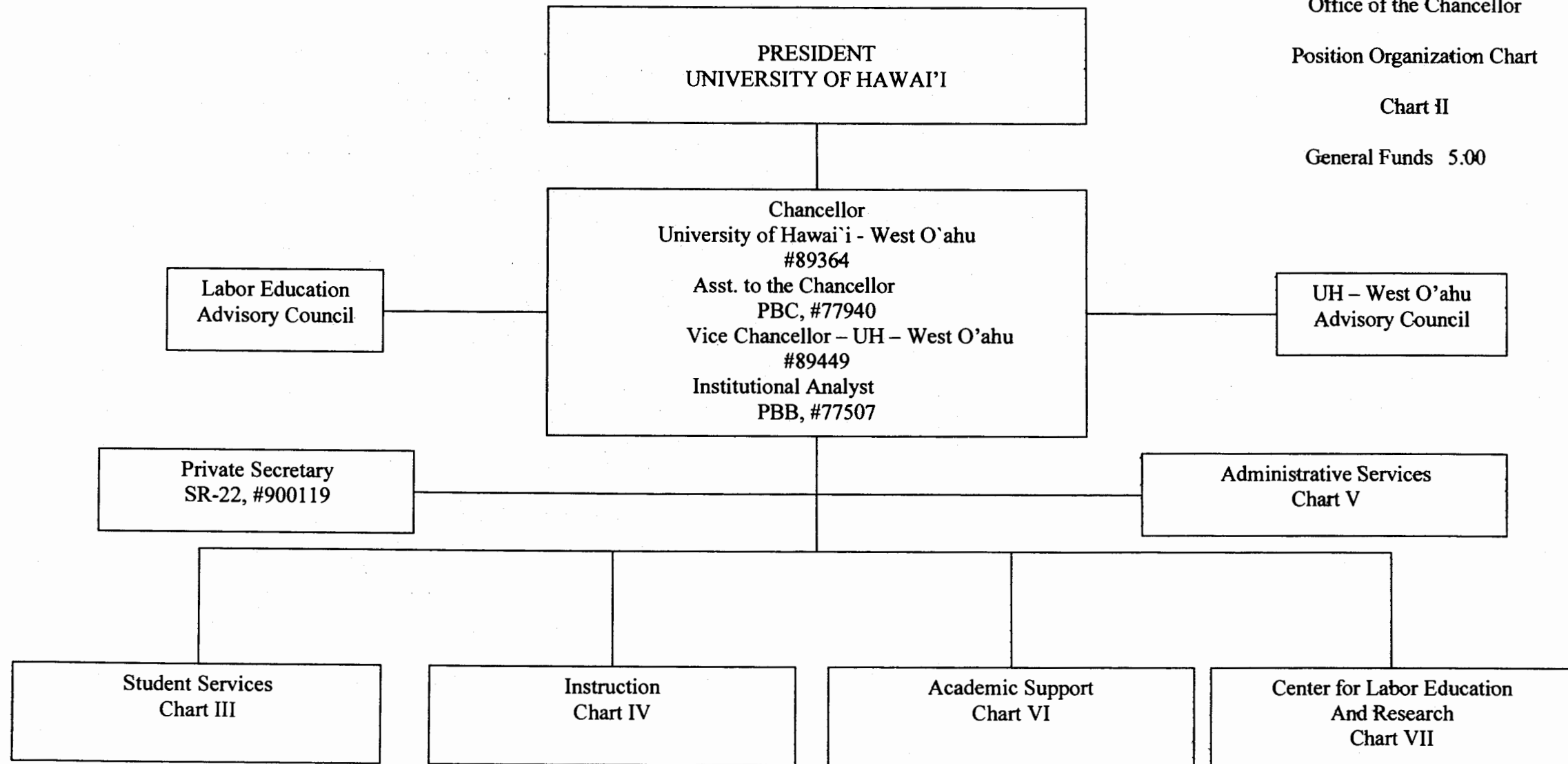


CHART UPDATED
JUL - 1 2006
DATE _____

State of Hawai'i
University of Hawai'i
University of Hawai'i - West O'ahu
Student Services

Position Organization Chart
Chart III
General Funds 12.00

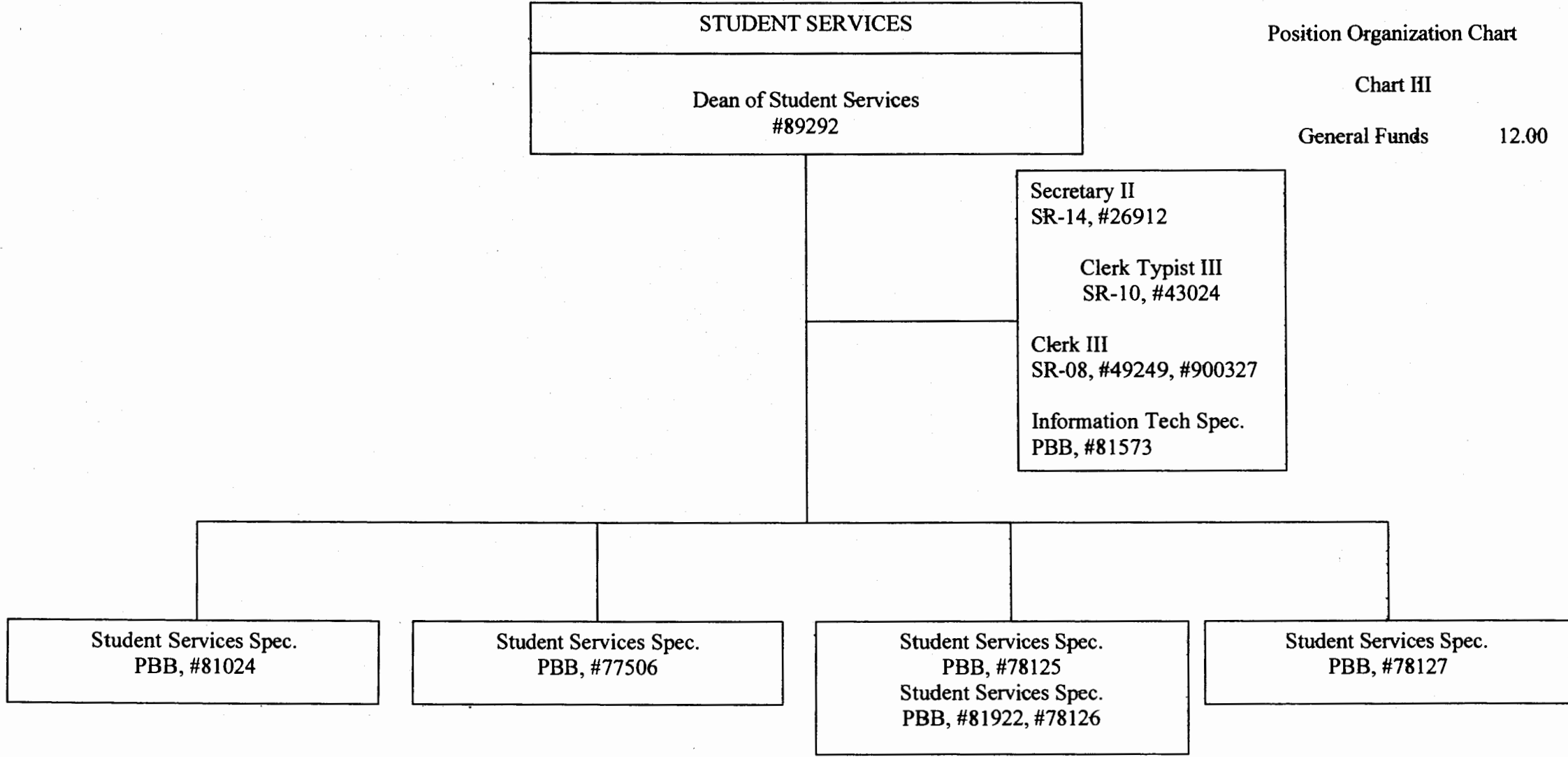


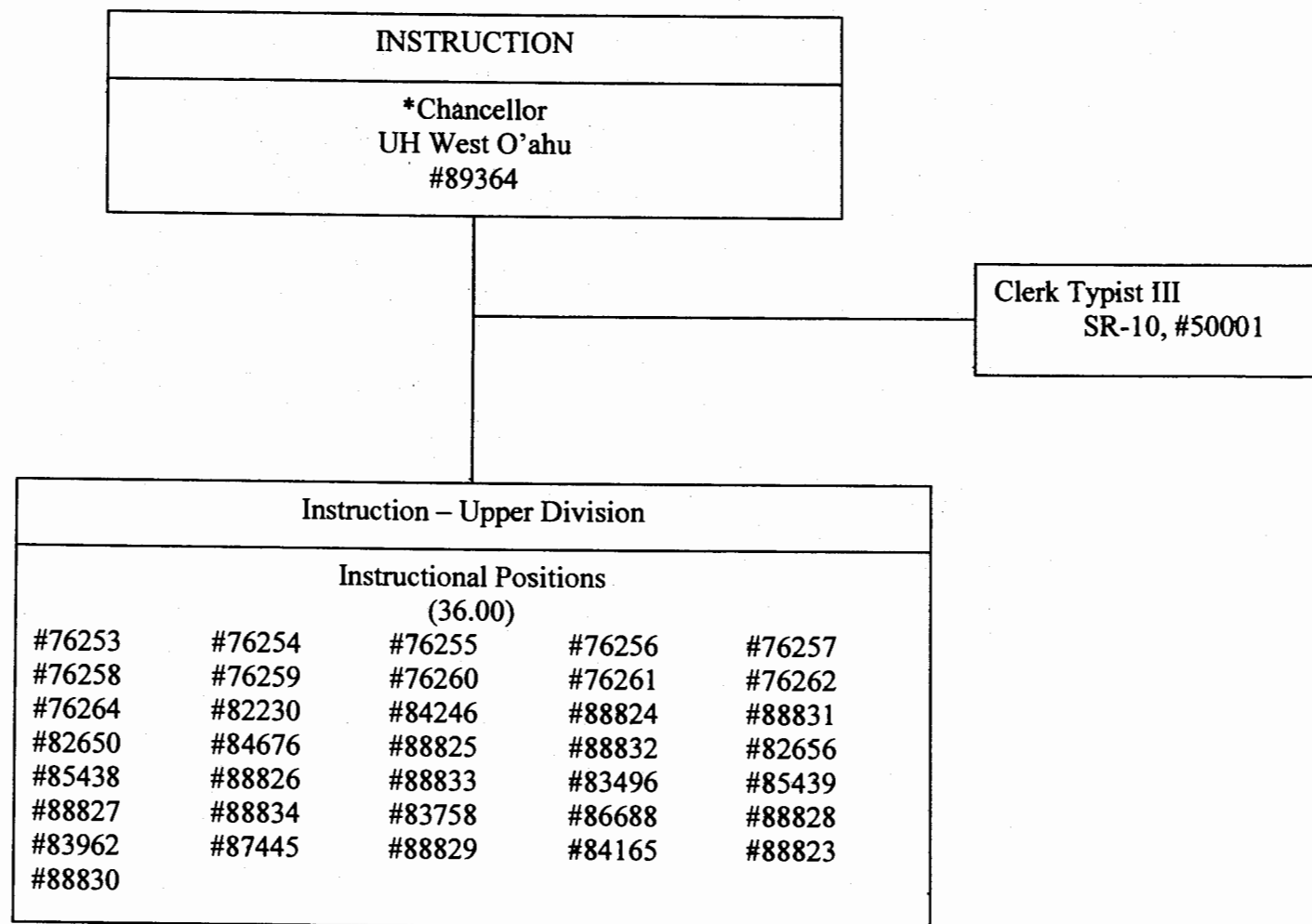
CHART UPDATED
JUL - 1 2006
DATE _____

State of Hawai'i
University of Hawai'i
University of Hawai'i - West O'ahu
Instruction

Position Organization Chart

Chart IV

General Funds 37.00



*Position count not included on this page

CHART UPDATED
JUL - 1 2006
DATE _____

State of Hawai'i
University of Hawai'i
University of Hawai'i - West O'ahu
Administrative Services

Position Organization Chart

Chart V

General Funds 7.00

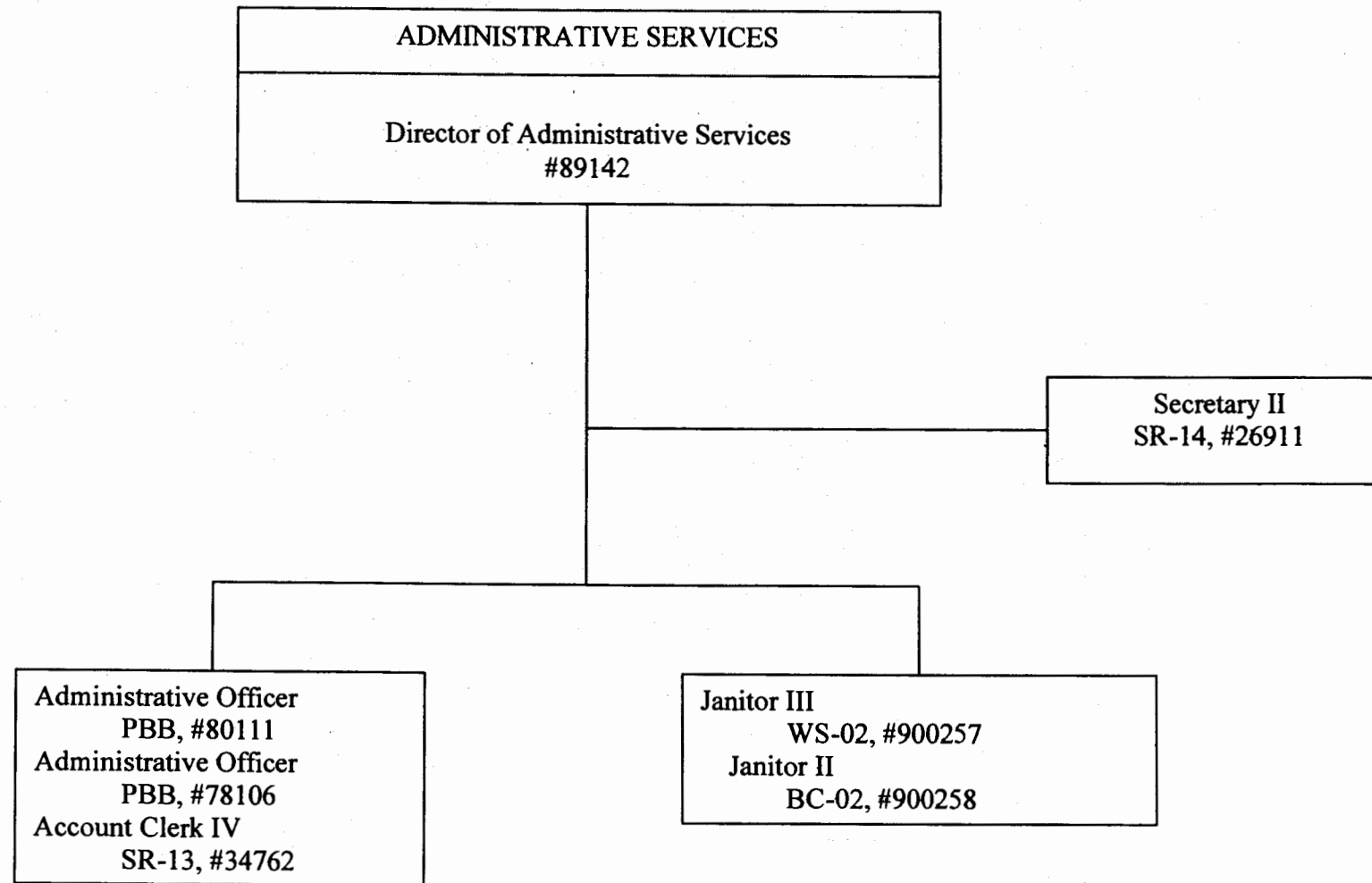


CHART UPDATED

DATE JUL - 1 2006

State of Hawai'i
University of Hawai'i
University of Hawai'i - West O'ahu
Academic Support

Position Organization Chart

Chart VI

General Funds 3.00

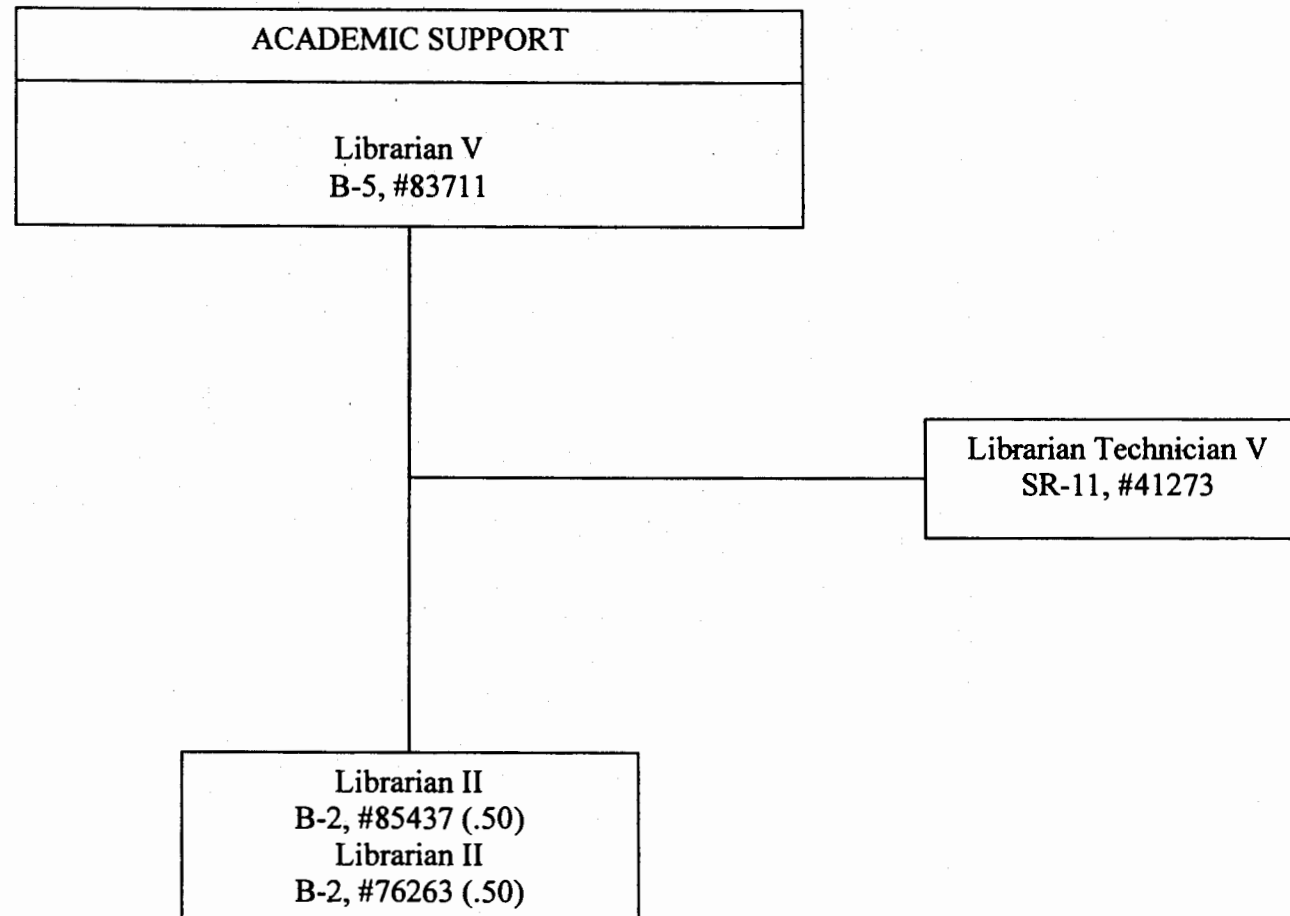


CHART UPDATED
JUL - 1 2006

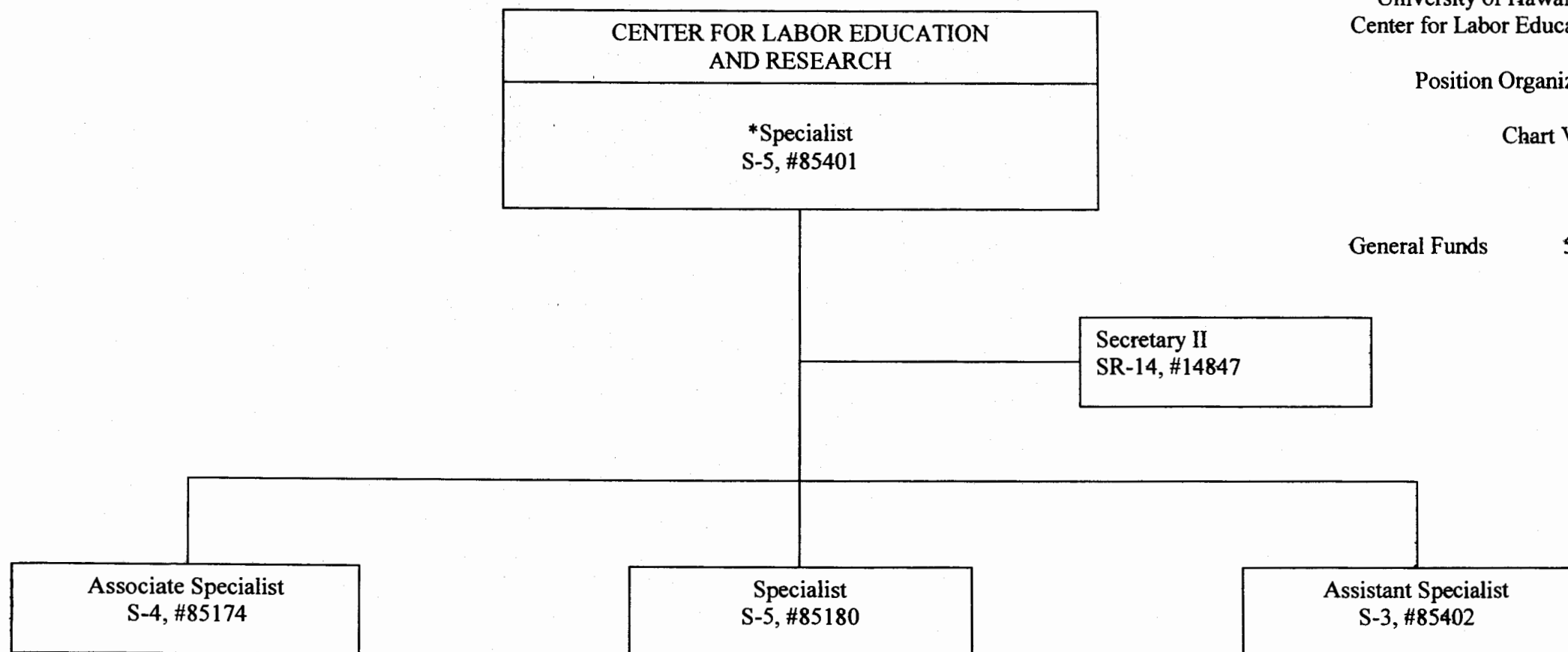
DATE _____

State of Hawai'i
University of Hawai'i
University of Hawai'i - West O'ahu
Center for Labor Education and Research

Position Organization Chart

Chart VII

General Funds 5.00



*Director

CHART UPDATE
DATE JUL - 1 2006