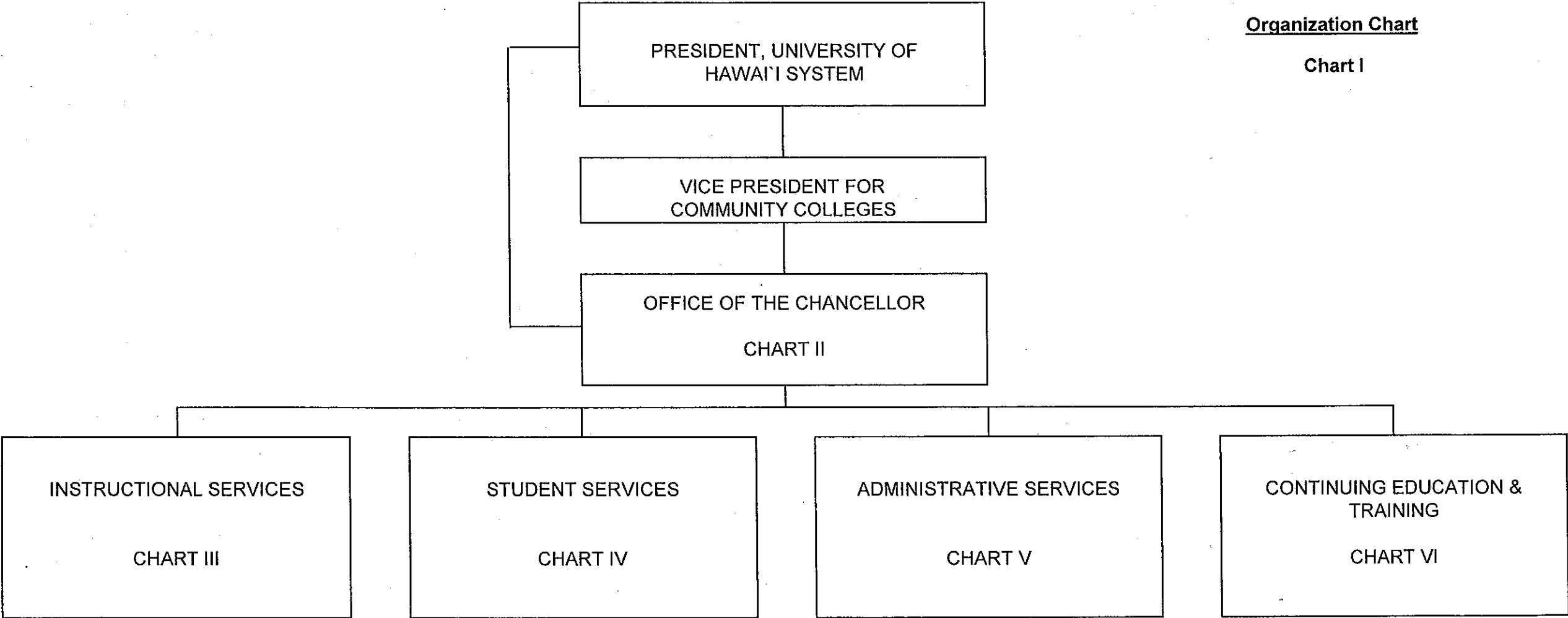


STATE OF HAWAII
UNIVERSITY OF HAWAII
KAUA'I COMMUNITY COLLEGE

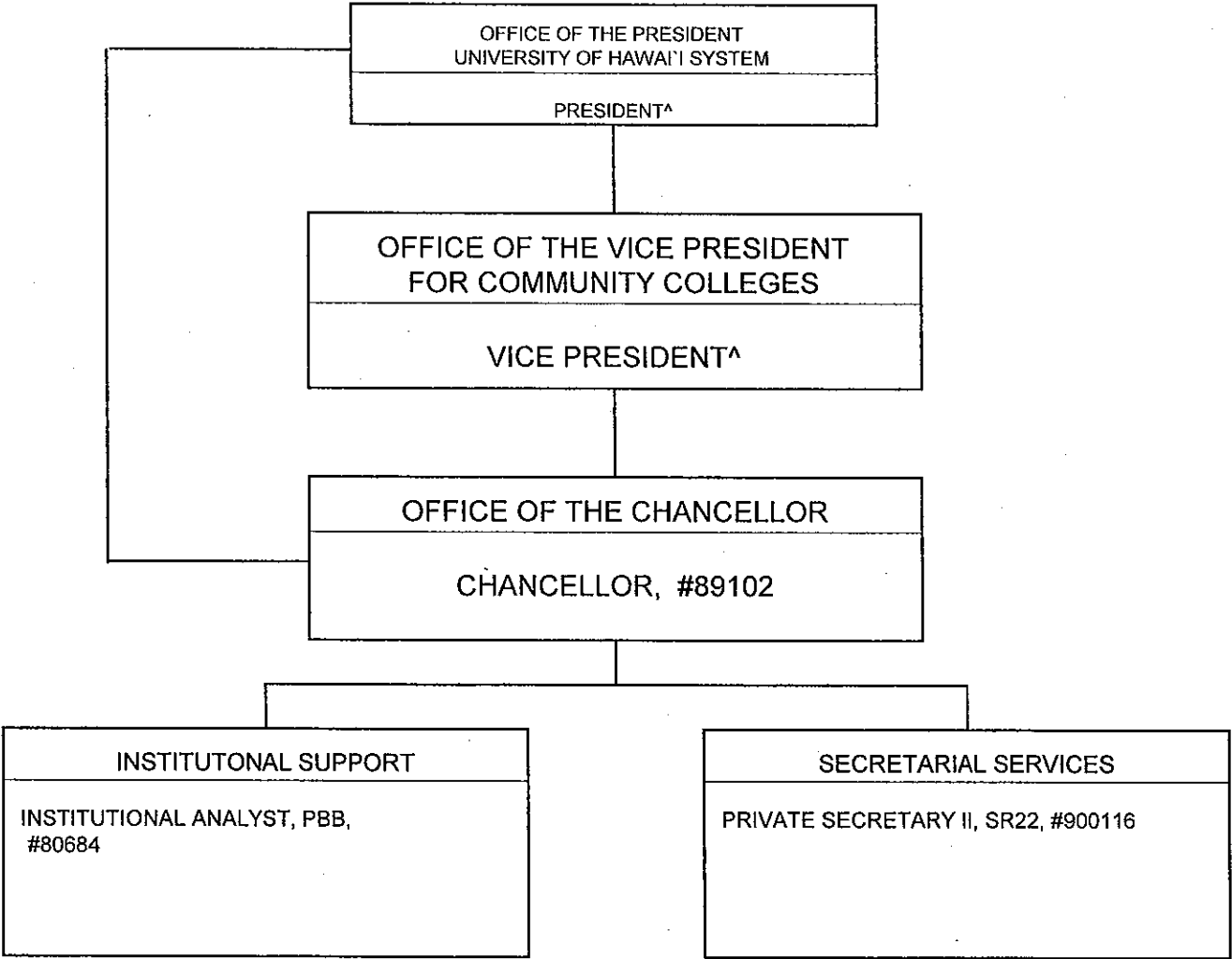
Organization Chart

Chart I



STATE OF HAWAII
UNIVERSITY OF HAWAII
KAUA'I COMMUNITY COLLEGE
OFFICE OF THE CHANCELLOR

Position Organization Chart
Chart II



^Excluded from position count this chart

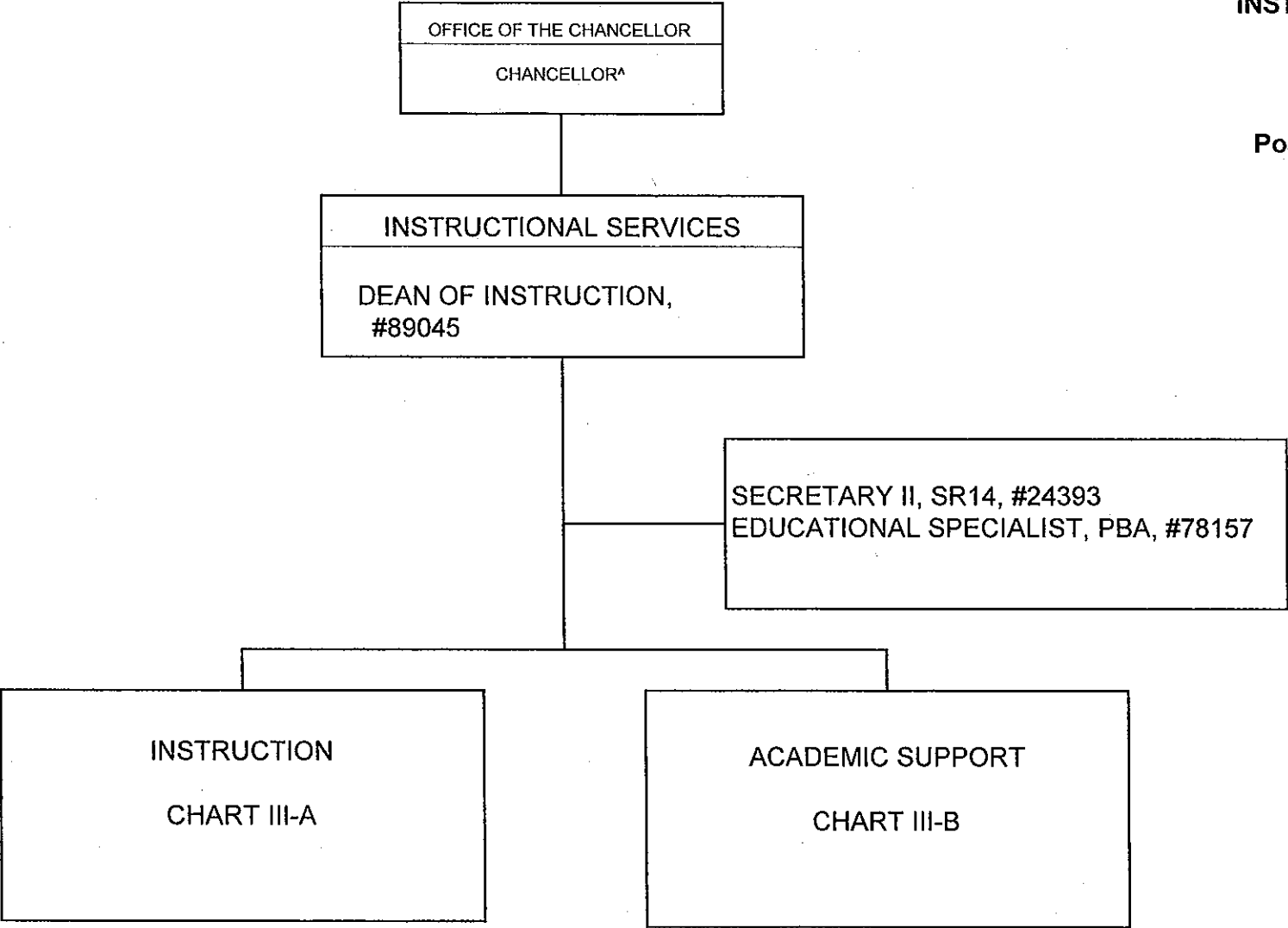
Perm
GENERAL FUND 3.00

CHART UPDATED

DATE JUL - 1 2007

STATE OF HAWAII
UNIVERSITY OF HAWAII
KAUAI COMMUNITY COLLEGE
INSTRUCTIONAL SERVICES

Position Organization Chart
Chart III



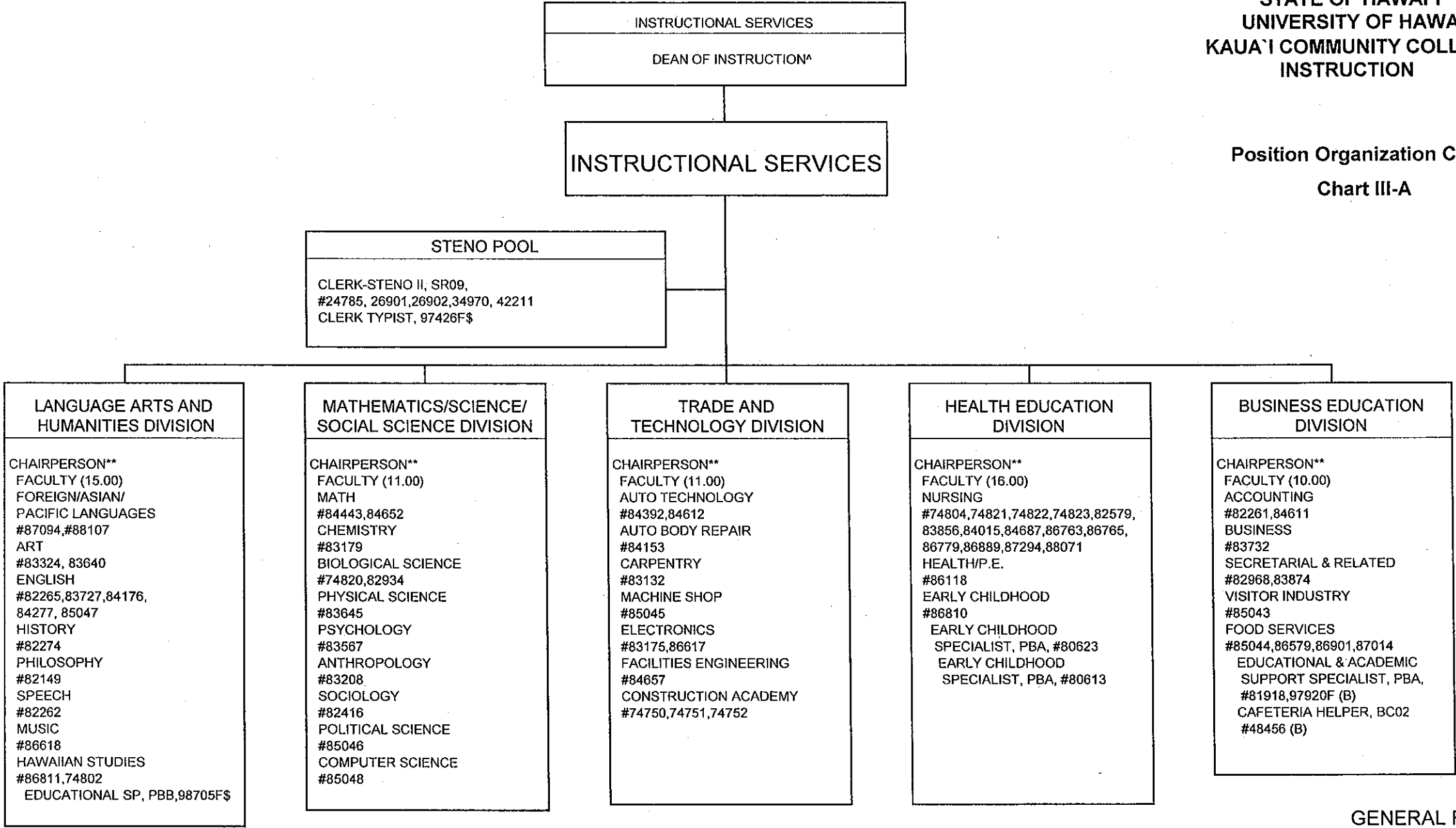
^Excluded from position count this chart

GENERAL FUND Perm 3.00

CHART UPDATED
DATE JUL - 1 2007

STATE OF HAWAII
UNIVERSITY OF HAWAII
KAUA'I COMMUNITY COLLEGE
INSTRUCTION

Position Organization Chart
Chart III-A



^ Excluded from position count this chart

**Appointed from instructional positions within divisions on a rotating basis

\$ Position to be established

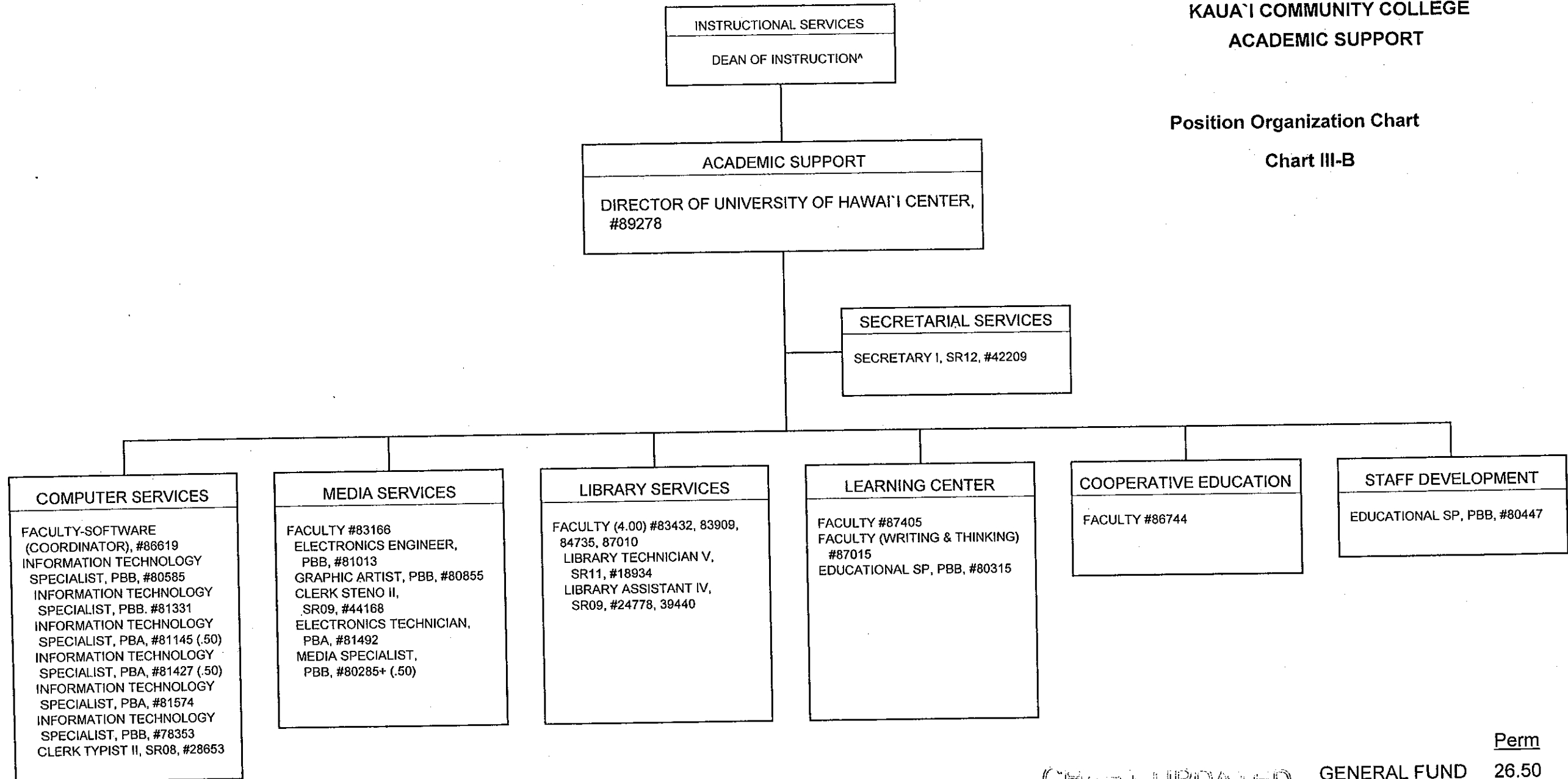
Perm
GENERAL FUND 73.00
(B) SPECIAL FUNDS 2.00

CHART UPDATED
DATE JUL - 1 2007

STATE OF HAWAII
UNIVERSITY OF HAWAII
KAUA'I COMMUNITY COLLEGE
ACADEMIC SUPPORT

Position Organization Chart

Chart III-B



^Excluded from position count this chart
+to be redescribed

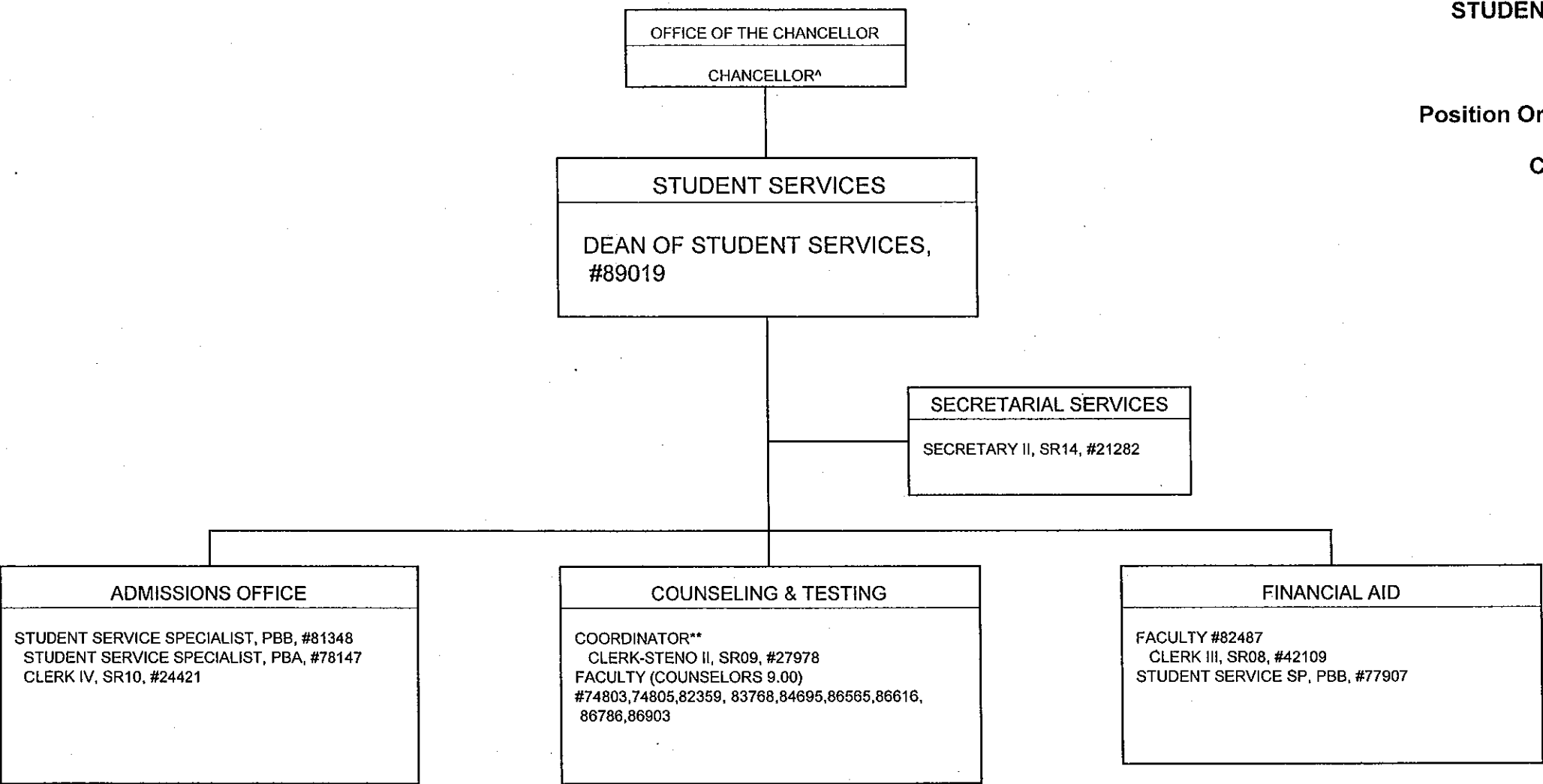
CHART UPDATED
DATE JUL - 1 2007

GENERAL FUND 26.50
Perm

STATE OF HAWAII
UNIVERSITY OF HAWAII
KAUA'I COMMUNITY COLLEGE
STUDENT SERVICES

Position Organization Chart

Chart IV



^ Excluded from position count this chart
** Coordinator is appointed from among faculty positions within the unit.

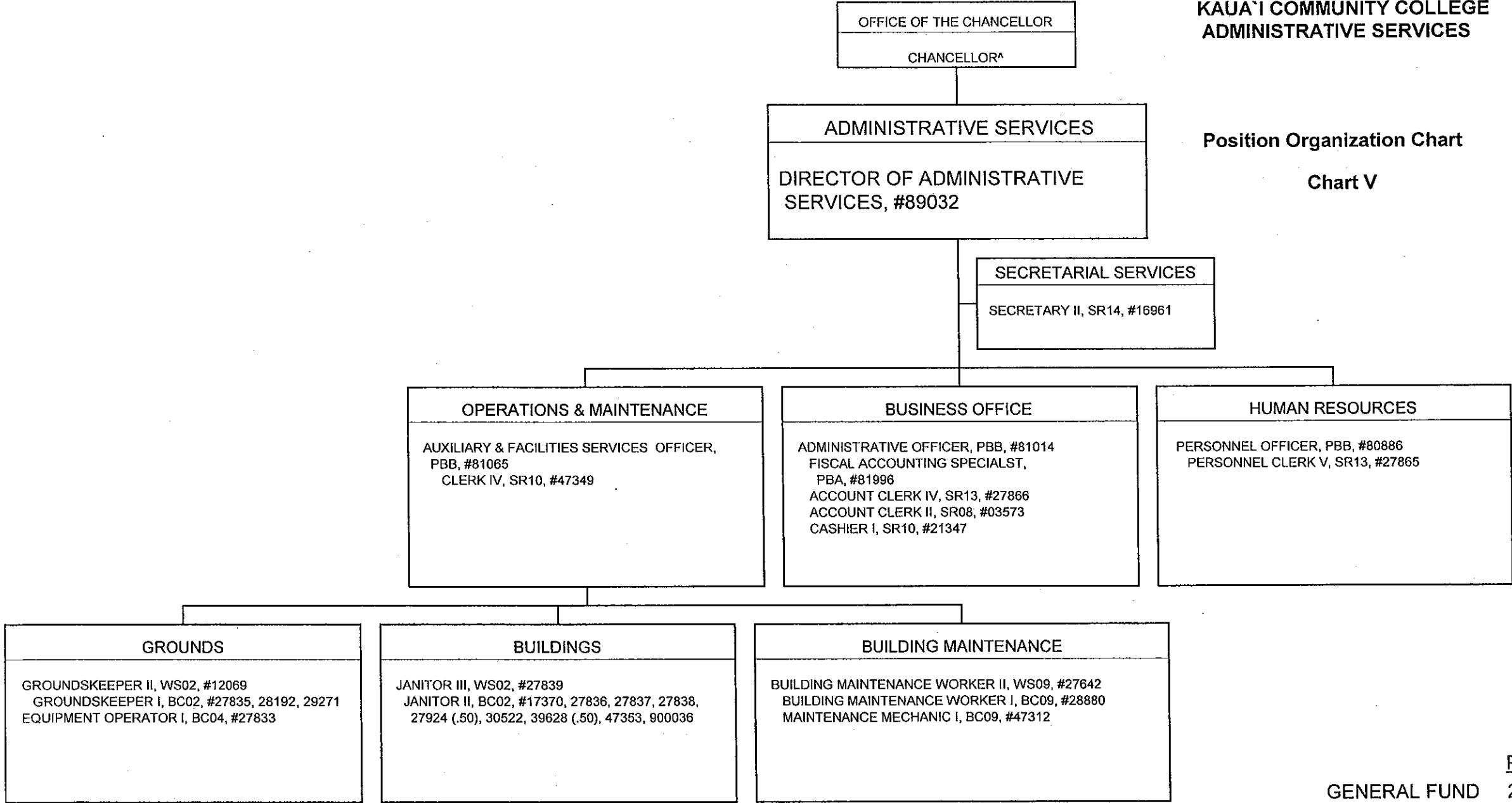
GENERAL FUND Perm 18.00

CHART UPDATED
DATE JUL - 1 2007

STATE OF HAWAII
UNIVERSITY OF HAWAII
KAUAI COMMUNITY COLLEGE
ADMINISTRATIVE SERVICES

Position Organization Chart

Chart V



^ Excluded from position count this chart

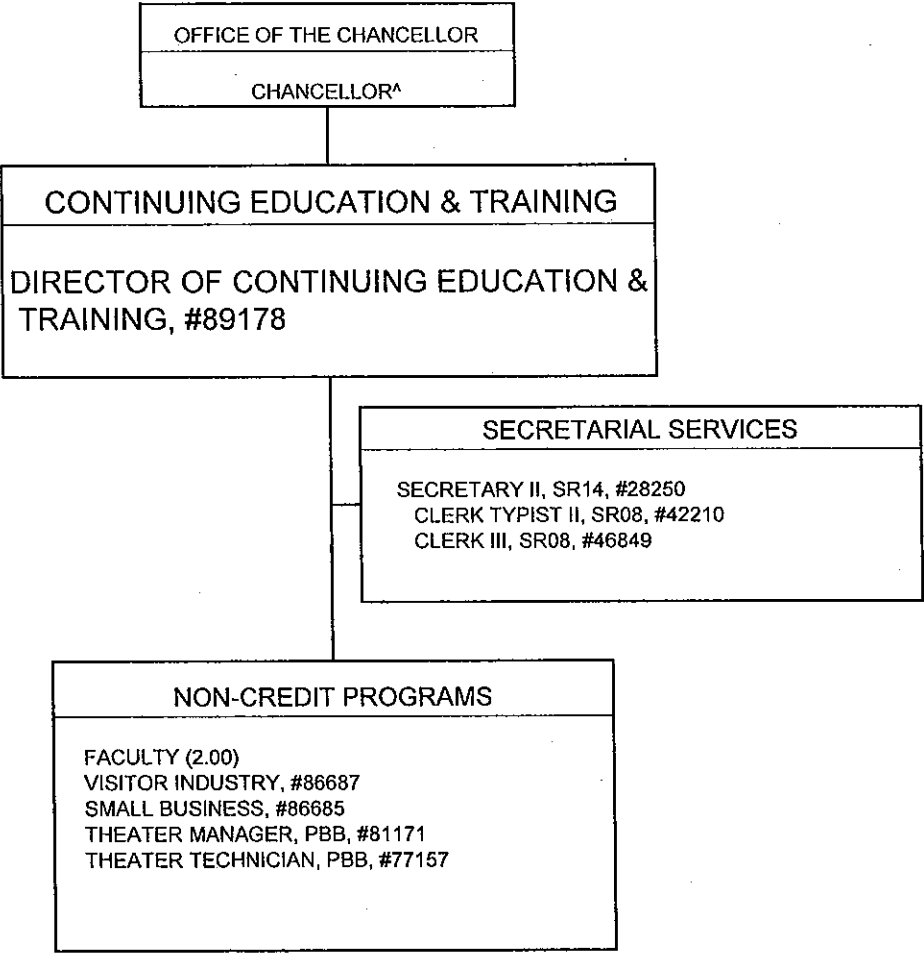
Perm
GENERAL FUND 28.00

CHART UPDATED
DATE JUL - 1 2007

STATE OF HAWAII
UNIVERSITY OF HAWAII
KAUAI COMMUNITY COLLEGE
CONTINUING EDUCATION & TRAINING

Position Organization Chart

Chart VI



^Excluded from position count this chart

Perm
GENERAL FUND 8.00

CHART UPDATED

DATE JUL - 1 2007