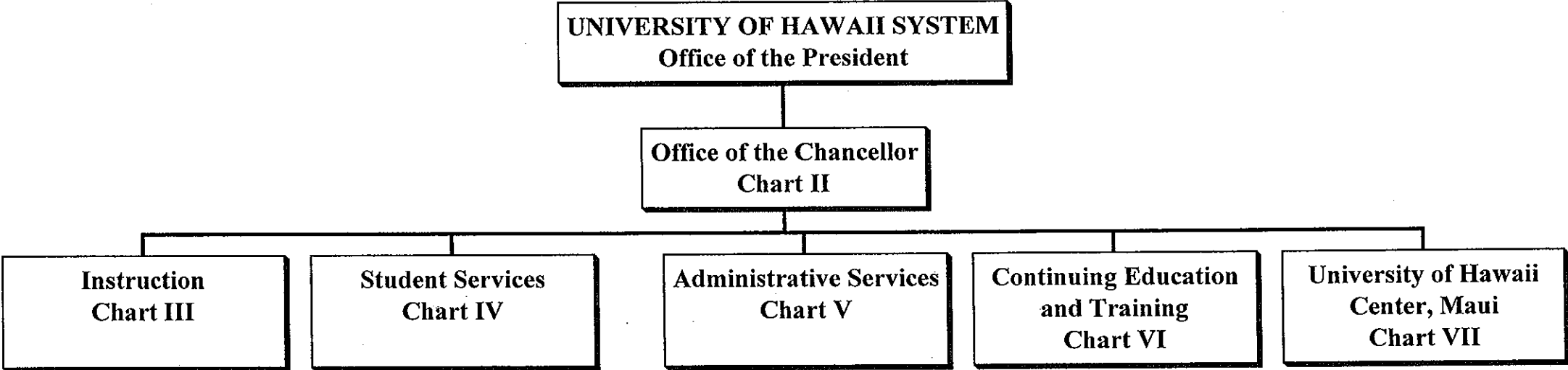


STATE OF HAWAII
UNIVERSITY OF HAWAII
MAUI COMMUNITY COLLEGE

Organization Chart

Chart I



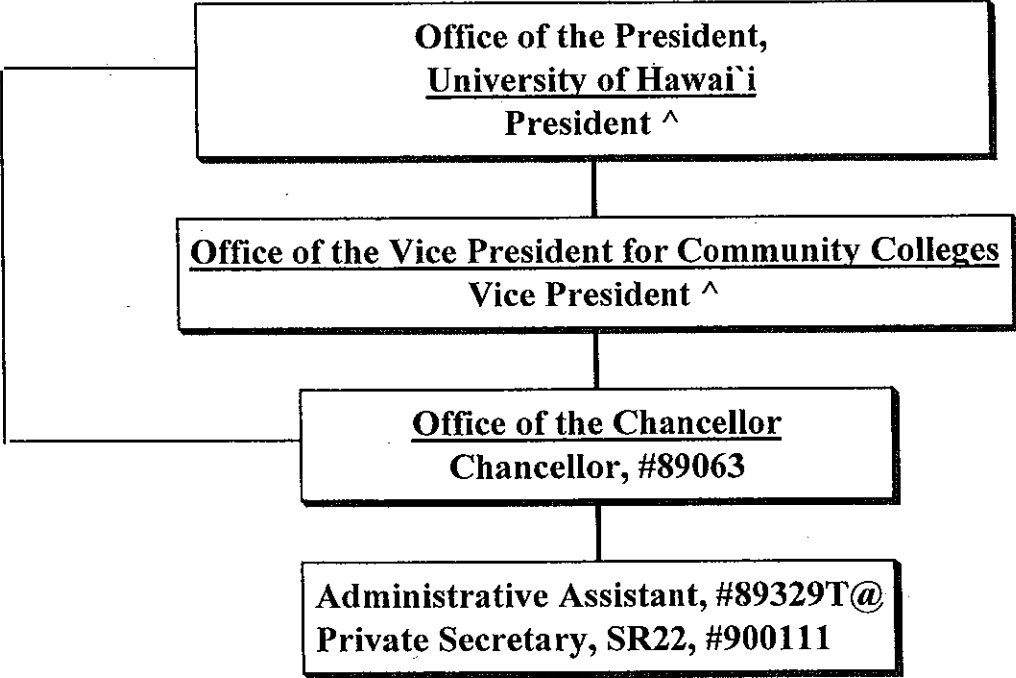
	<u>Perm</u>	<u>Temp</u>
General Funds	209.75	4.00
(B) Special Funds	12.00	

CHART UPDATED
DATE JUL - 1 2007

STATE OF HAWAII
UNIVERSITY OF HAWAII
MAUI COMMUNITY COLLEGE
OFFICE OF THE CHANCELLOR

Position Organization Chart

Chart II



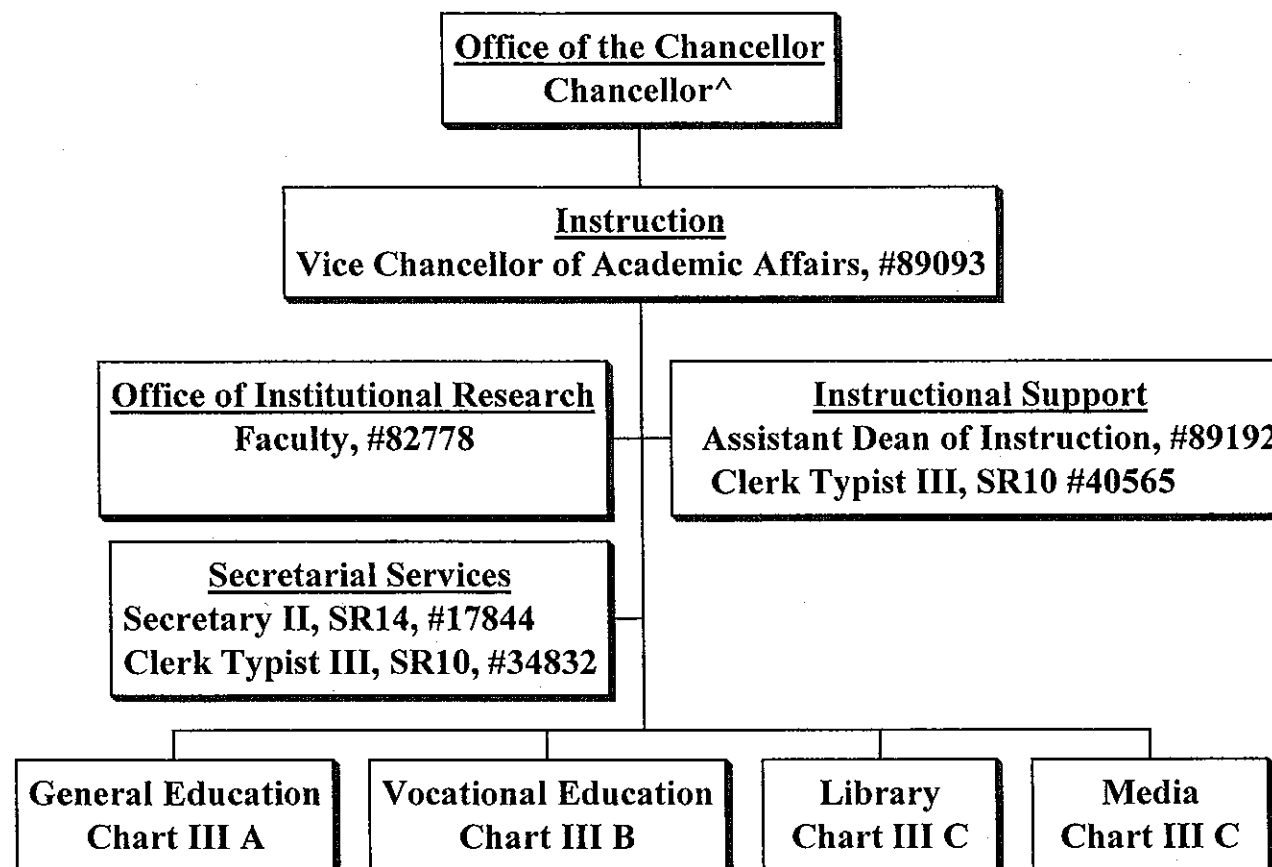
	<u>Perm</u>	<u>Temp</u>
General Fund	2.00	1.00

^ Excluded from position count this chart
@To be reorganized/redescribed.

STATE OF HAWAII
UNIVERSITY OF HAWAII
MAUI COMMUNITY COLLEGE
INSTRUCTION

Position Organization Chart

Chart III



^ Excluded from position count this chart

Perm

General Fund

6.00

CHART UPDATED

DATE JUL - 1 2007

**STATE OF HAWAII
UNIVERSITY OF HAWAII
MAUI COMMUNITY COLLEGE
INSTRUCTION**

Instruction <hr/> Vice Chancellor of Academic Affairs ^
--

Position Organization Chart

Chart III A

General Education	
<u>Math/Science Division</u>	
Chairperson**	
Faculty (15.50), #82356, #82660, #82754, #83018, #83290, #83632, #83833, #83866, #74762, #84011, #84137, #84570, #86073, #86725, #86932, #82666 (.50)	
Educational Specialist, PBA, #81658	
Educational & Academic Support Specialist, PBA, #81730, #81731 (.50)	
Account Clerk III, SR11, #35751	
<u>Language Arts Division</u>	
Chairperson**	
Faculty (11.00), #82199, #82408, #82636, #82958, #83093, #83898, #84148, #84367, #84482, #84998, #85074	
Educational Specialist, PBB, #81214+	
Educational Specialist, PBA, #77938	
Clerk Steno II, SR09, #47721	
<u>Social Science/Humanities Division</u>	
Chairperson**	
Faculty (19.00), #82410, #82665, #82798, #83206, #83377, #83546, #83613, #83628, #84214, #84312, #84997, #84999, #86887T*, #87088, #74753, #74772, #74773, #74789	
#86857T* (.50), #86888T* (.50)	
Clerk Typist III, SR10, #33898	
<u>Outreach</u>	
Faculty (2.00), #86630, #86816	
Educational & Academic Support Specialist, PBA, #78124 (.50), #78132, #78131 (.75)	
Educational & Academic Support Specialist, PBB, #78130	
Institutional Analyst, PBA, #78128, #78123 (.50)	

^ Excluded from position count this chart
 * Temporary Position
 ** Chairperson is appointed from among instructional positions within the division
 + Supervised by one of the faculty positions.

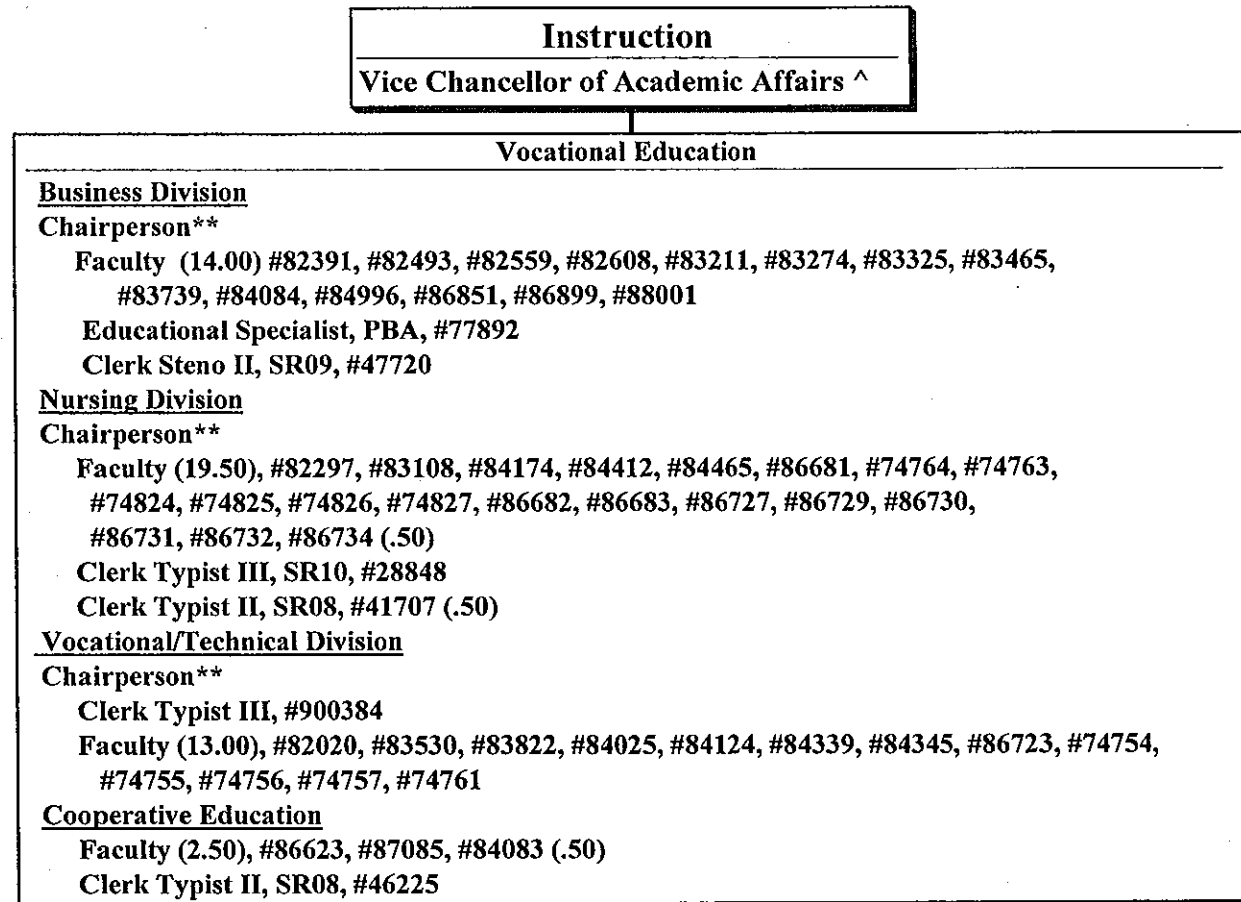
	<u>Perm</u>	<u>Temp</u>
General Fund	57.75	2.00

CHART UPDATED
 DATE JUL - 1 2007

STATE OF HAWAII
UNIVERSITY OF HAWAII
MAUI COMMUNITY COLLEGE
INSTRUCTION

Position Organization Chart

Chart III B



^ Excluded from position count this chart

** Chairperson is appointed from among
Instructional positions within the division

Perm

General Fund 54.50

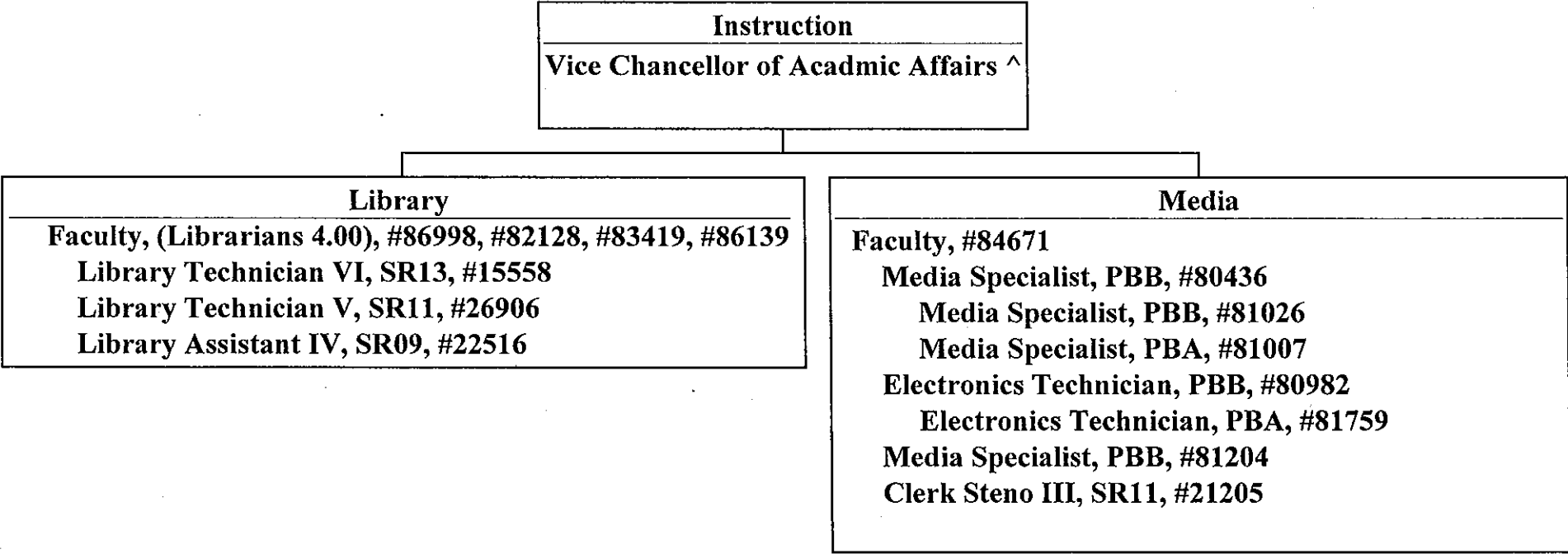
CHART UPDATED

DATE JUL - 1 2007

**STATE OF HAWAII
UNIVERSITY OF HAWAII
MAUI COMMUNITY COLLEGE
INSTRUCTION**

Position Organization Chart

Chart III C



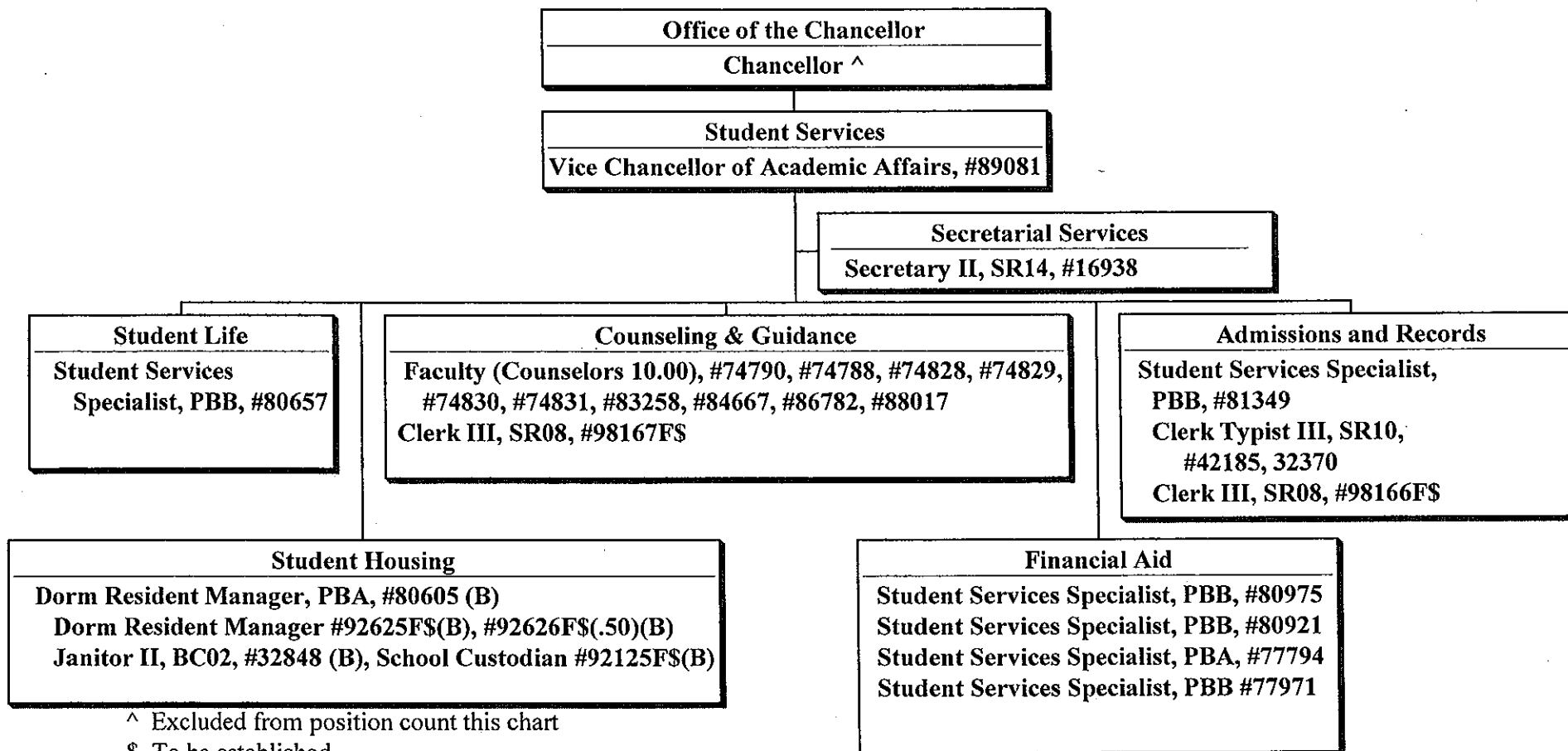
^ Excluded from position count this chart

General Fund Perm
15.00

**STATE OF HAWAII
UNIVERSITY OF HAWAII
MAUI COMMUNITY COLLEGE
STUDENT SERVICES**

Position Organization Chart

Chart IV



^ Excluded from position count this chart

\$ To be established

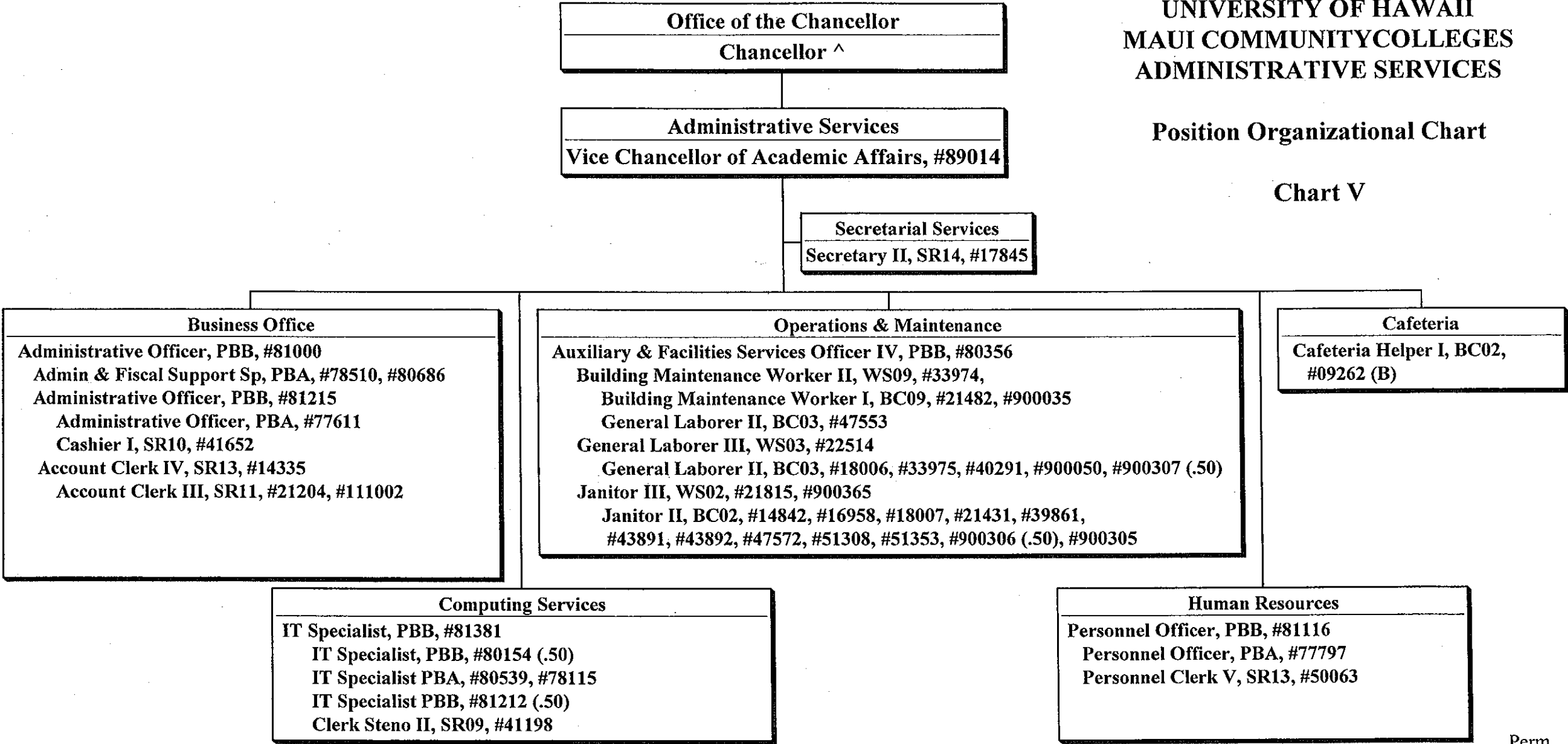
	Perm
General Fund	22.00
(B) Special Funds	4.50

CHART UPDATED
DATE JUL - 1 2007

STATE OF HAWAII
UNIVERSITY OF HAWAII
MAUI COMMUNITYCOLLEGES
ADMINISTRATIVE SERVICES

Position Organizational Chart

Chart V



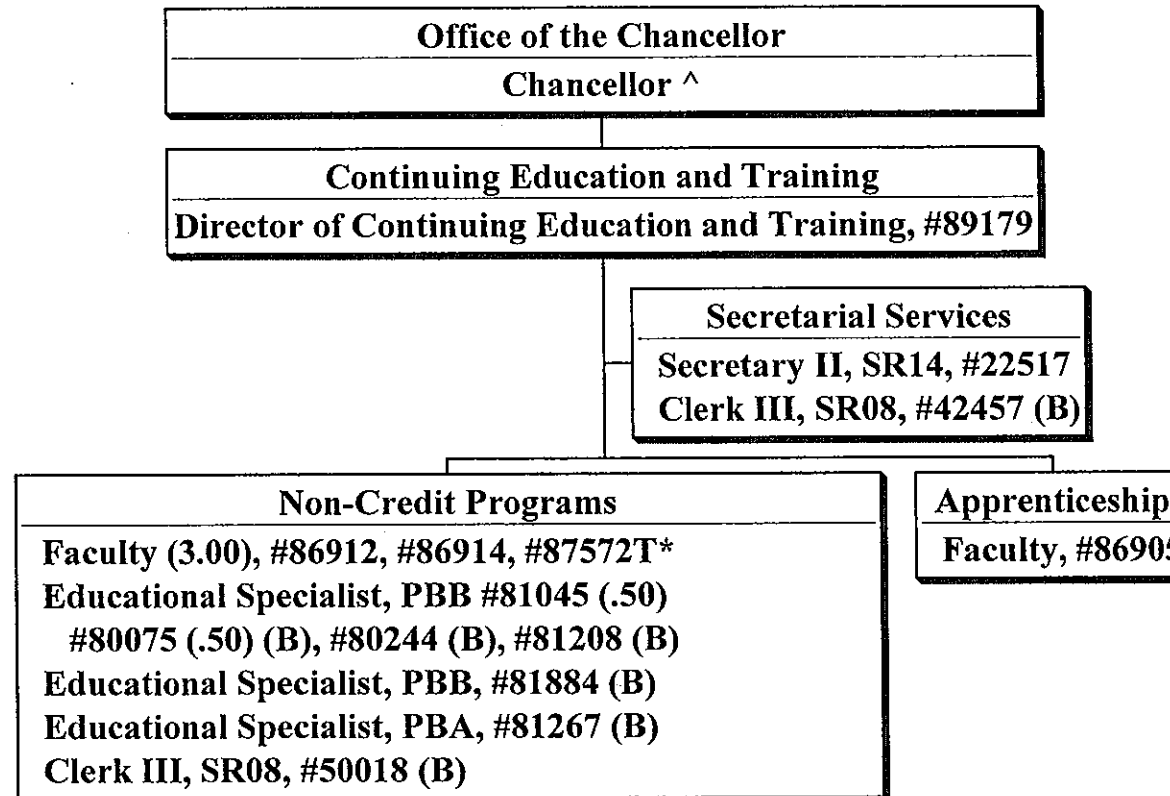
^Excluded from position count on this chart

	Perm
General Fund	44.00
Special Fund (B)	1.00

**STATE OF HAWAII
UNIVERSITY OF HAWAII
MAUI COMMUNITY COLLEGE
CONTINUING EDUCATION
AND TRAINING**

Position Organization Chart

Chart VI



	<u>Perm</u>	<u>Temp</u>
General Funds	5.50	1.00
(B) Special Funds	6.50	

* Temporary Position

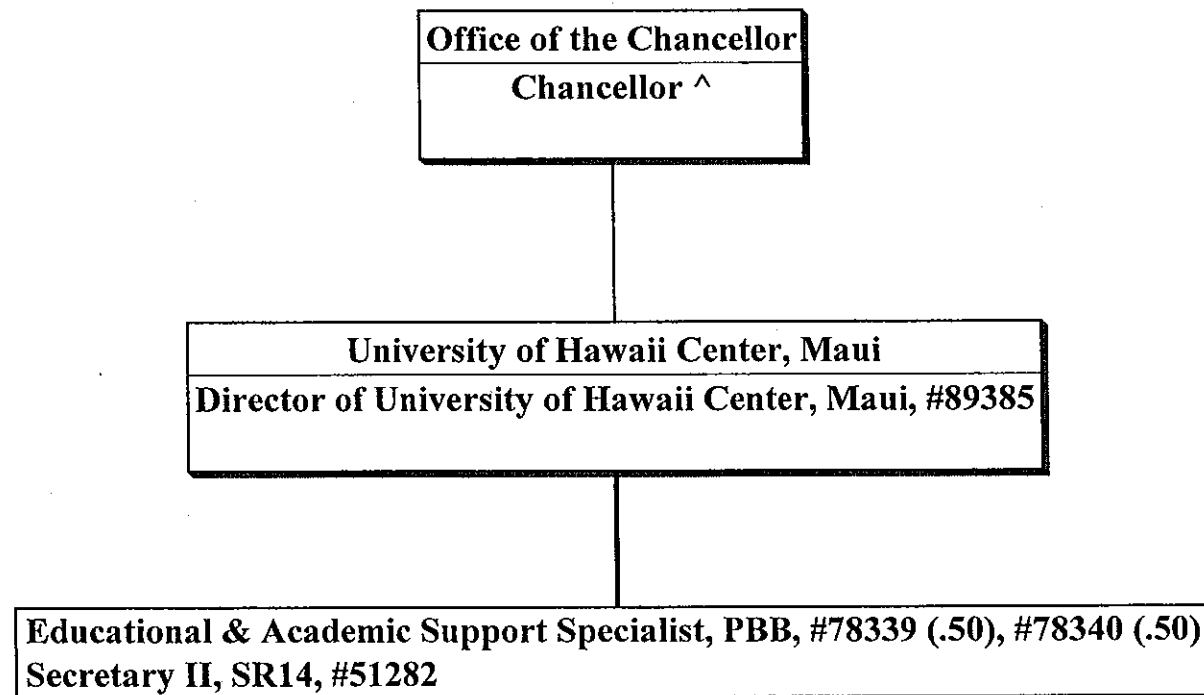
^ Excluded from position count this chart

CHART UPDATED
JUL - 1 2007
DATE _____

STATE OF HAWAII
UNIVERSITY OF HAWAII
MAUI COMMUNITY COLLEGE
UNIVERSITY OF HAWAII CENTER, MAUI

Position Organization Chart

Chart VII



^ Excluded from position count this chart

Perm
General Fund 3.00
CHART UPDATED
DATE JUL - 1 2007