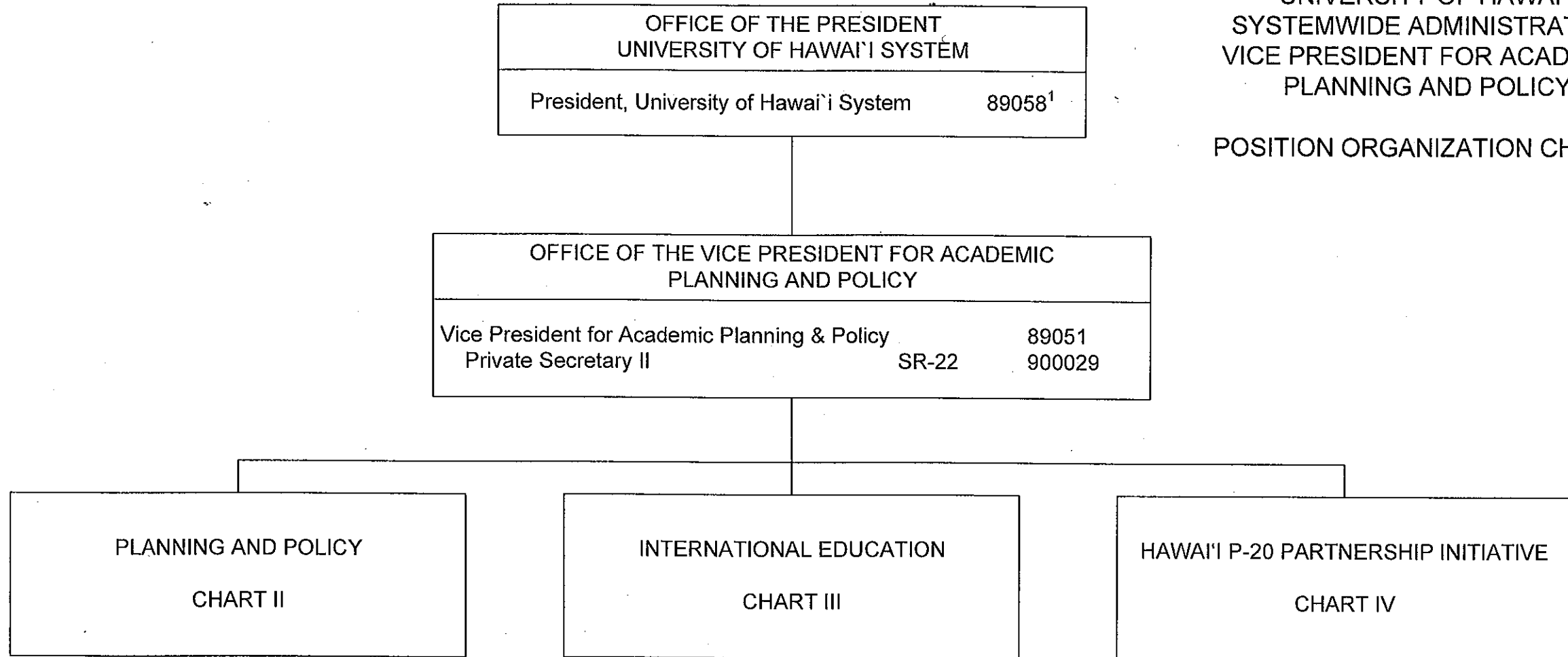


STATE OF HAWAII
UNIVERSITY OF HAWAII
SYSTEMWIDE ADMINISTRATION
VICE PRESIDENT FOR ACADEMIC
PLANNING AND POLICY

POSITION ORGANIZATION CHART I

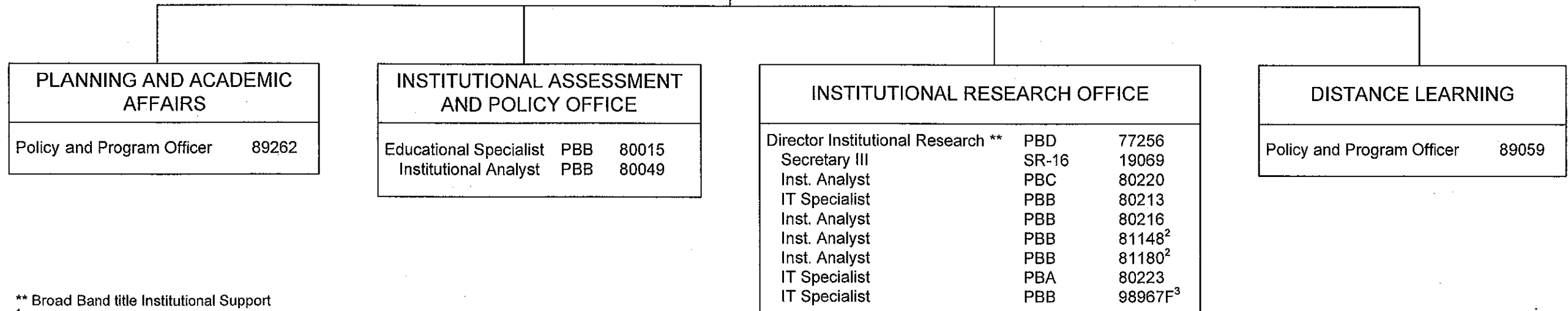


¹ Excluded from position count

STATE OF HAWAII
UNIVERSITY OF HAWAII
SYSTEMWIDE ADMINISTRATION
VICE PRESIDENT FOR ACADEMIC
PLANNING AND POLICY
OFFICE OF PLANNING AND POLICY
POSITION ORGANIZATION CHART II

OFFICE OF THE VICE PRESIDENT FOR ACADEMIC PLANNING AND POLICY		
Vice President for Academic Planning & Policy		89051 ¹

OFFICE OF PLANNING AND POLICY		
Assoc Vice President		89173
Admin and Fiscal Support Specialist	PBA	78182



** Broad Band title Institutional Support

¹ To be redescribed; excluded from position count

² Part of UOH 902 appropriation reflected organizationally on this chart

³ Position appropriated by 2007 Legislature

2007orgchrtupdate vpapp

General Funds	Perm 13.00
General Funds (UOH 902)	2.00

CHART UPDATED
JUL - 1 2007
DATE _____

STATE OF HAWAI'I
UNIVERSITY OF HAWAI'I
SYSTEMWIDE ADMINISTRATION
VICE PRESIDENT FOR ACADEMIC
PLANNING AND POLICY
OFFICE OF INTERNATIONAL EDUCATION

POSITION ORGANIZATION CHART III

OFFICE OF THE VICE PRESIDENT FOR ACADEMIC PLANNING AND POLICY		
Vice President for Academic Planning & Policy		89051 ¹
OFFICE OF INTERNATIONAL EDUCATION		
Director of International Affairs		89380 ²
Secretary II	SR-14	51355 ²
Educational Specialist	PBB	81158 ²
Educational Specialist	PBB	81015 ²

¹ Excluded from position count
² To be redescribed

STATE OF HAWAII
 UNIVERSITY OF HAWAII
 SYSTEMWIDE ADMINISTRATION
 VICE PRESIDENT FOR ACADEMIC
 PLANNING AND POLICY
 OFFICE OF HAWAII P-20 PARTNERSHIP
 INITIATIVE

POSITION ORGANIZATION CHART IV

OFFICE OF THE VICE PRESIDENT FOR ACADEMIC PLANNING AND POLICY			
Vice President for Academic Planning & Policy			89051 ¹
OFFICE OF HAWAII P-20 PARTNERSHIP INITIATIVE			
Academic Program Officer			89467
Academic Program Officer			89160
Education & Academic Support Specialist		PBC	78511
Institutional Support		PBB	78490

¹ Excluded from position count

² To be redescribed