

STATE OF HAWAI'I
UNIVERSITY OF HAWAI'I
SYSTEMWIDE ADMINISTRATION
VICE PRESIDENT FOR
BUDGET AND FINANCE/
CHIEF FINANCIAL OFFICER

POSITION ORGANIZATION CHART

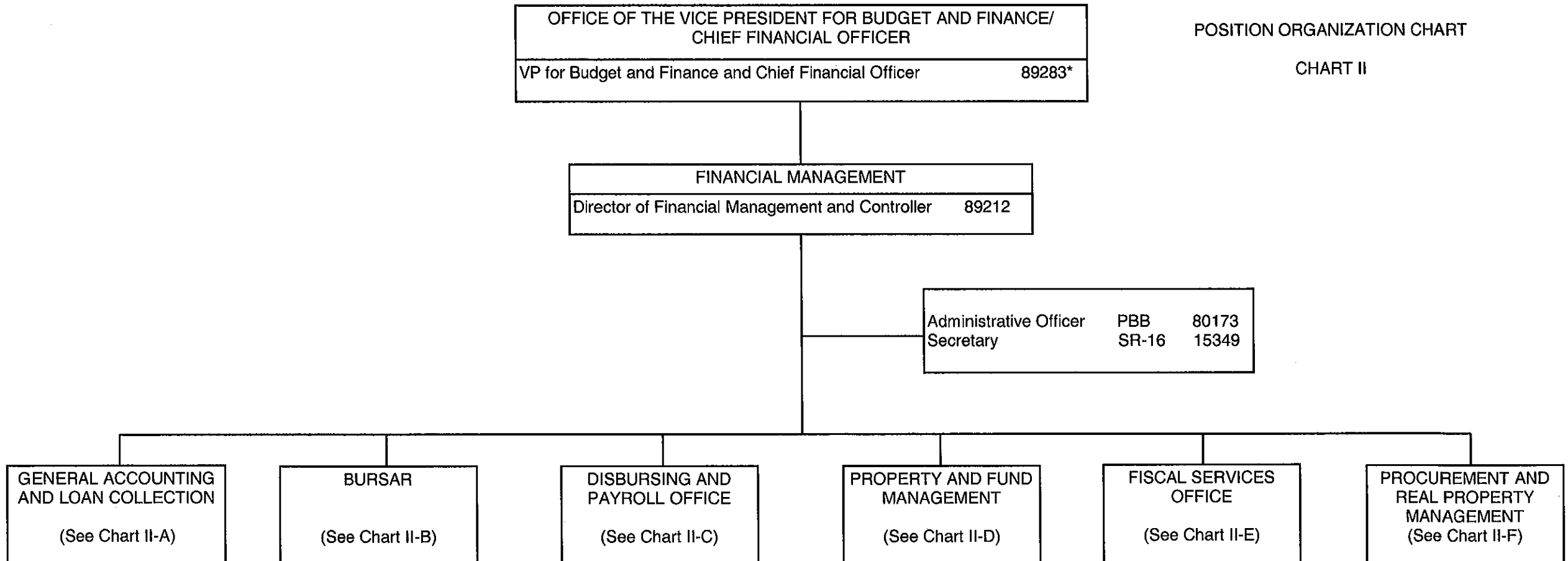
CHART I

¹ Excluded from position count
E/M position 89310 held to be redescribed

STATE OF HAWAII
UNIVERSITY OF HAWAII
SYSTEMWIDE ADMINISTRATION
VICE PRESIDENT FOR
BUDGET AND FINANCE/
CHIEF FINANCIAL OFFICER
FINANCIAL MANAGEMENT

POSITION ORGANIZATION CHART

CHART II



* Excluded from position count, this page

Perm
General Funds 3.00

CHART UPDATED
JUL - 1 2007
DATE

FINANCIAL MANAGEMENT	
Director of Financial Management and Controller	89212*

GENERAL ACCOUNTING AND LOAN COLLECTION (GALC)		
Director of GALC	PBD	80150
Fiscal Accounting Sp	PBB	80349
Fiscal Accounting Sp	PBB	80549
Fiscal Accounting Sp	PBB	81409
Fiscal Accounting Sp	PBB	80346
Fiscal Accounting Sp	PBB	81370
Fiscal Accounting Sp	PBA	80205 (N)
Fiscal Accounting Sp	PBA	81862 (N)
Fiscal Accounting Sp	PBA	80888
Fiscal Accounting Sp	PBB	98955F
Fiscal Accounting Sp	PBA	80347
Fiscal Accounting Sp	PBB	80141
Fiscal Accounting Sp	PBB	81407
Fiscal Accounting Sp	PBB	98956F
Fiscal Accounting Sp	PBB	98957F
Fiscal Accounting Sp	PBB	98958F
Fiscal Accounting Sp	PBB	81978
Fiscal Accounting Sp	PBB	77296
Fiscal Accounting Sp	PBB	81814 (N)
Adm & Fiscal Support Sp	PBA	80856 (N)
Administrative Off	PBA	80333 (N)
Adm & Fiscal Support Sp	PBA	80842 (N)
Fiscal Accounting Sp	PBA	81962 (N)
Fiscal Accounting Sp	PBA	81479 (N)

STATE OF HAWAII
UNIVERSITY OF HAWAII
SYSTEMWIDE ADMINISTRATION
VICE PRESIDENT FOR
BUDGET AND FINANCE/
CHIEF FINANCIAL OFFICER
FINANCIAL MANAGEMENT
GENERAL ACCOUNTING AND LOAN
COLLECTION

POSITION ORGANIZATION CHART

CHART II-A

* Excluded from position count, this page

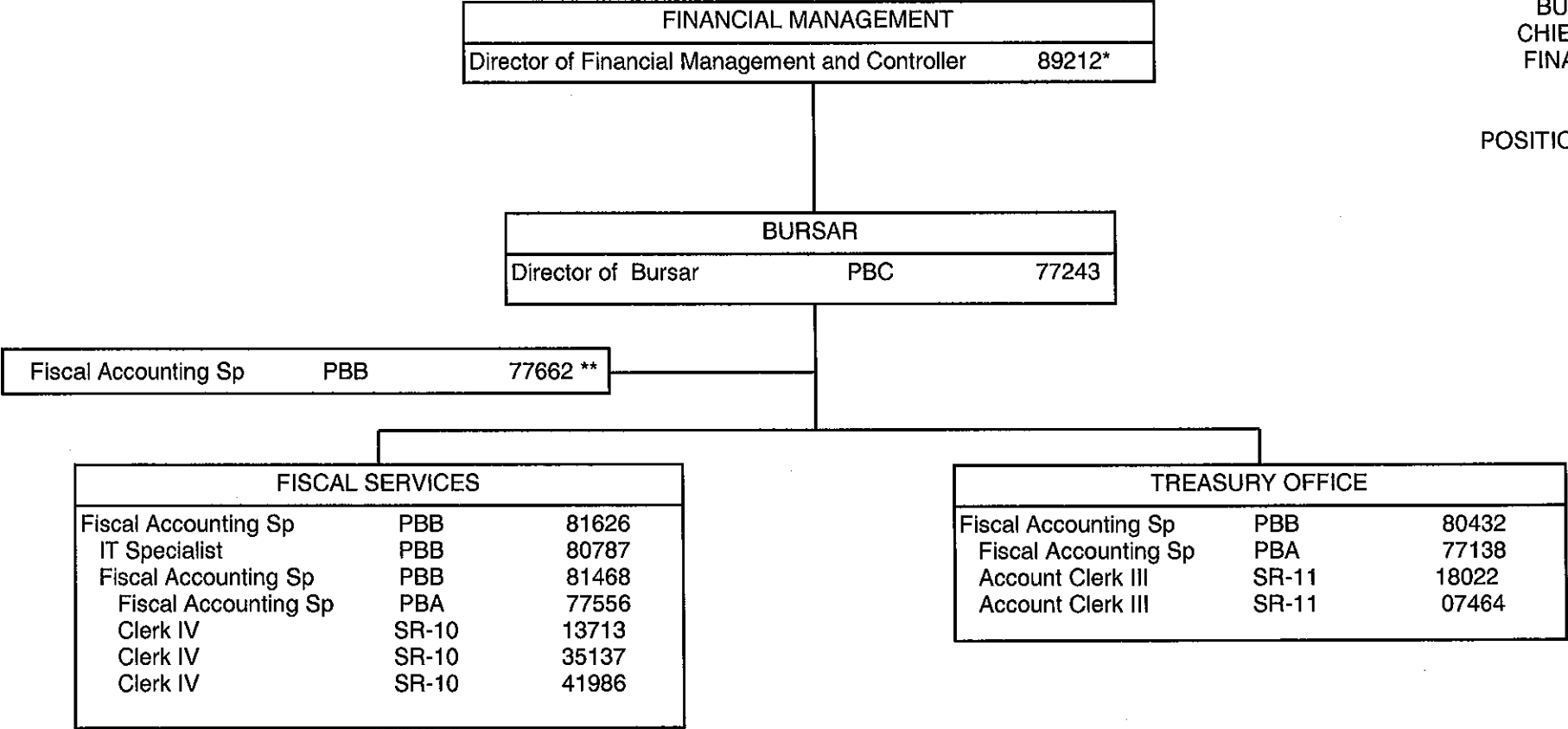
Perm
General Funds 16.00
Federal Funds (N) 8.00

CHART UPDATED
JUL - 1 2007
DATE _____

STATE OF HAWAII
UNIVERSITY OF HAWAII
SYSTEMWIDE ADMINISTRATION
VICE PRESIDENT FOR
BUDGET AND FINANCE/
CHIEF FINANCIAL OFFICER
FINANCIAL MANAGEMENT
BURSAR

POSITION ORGANIZATION CHART

CHART II-B

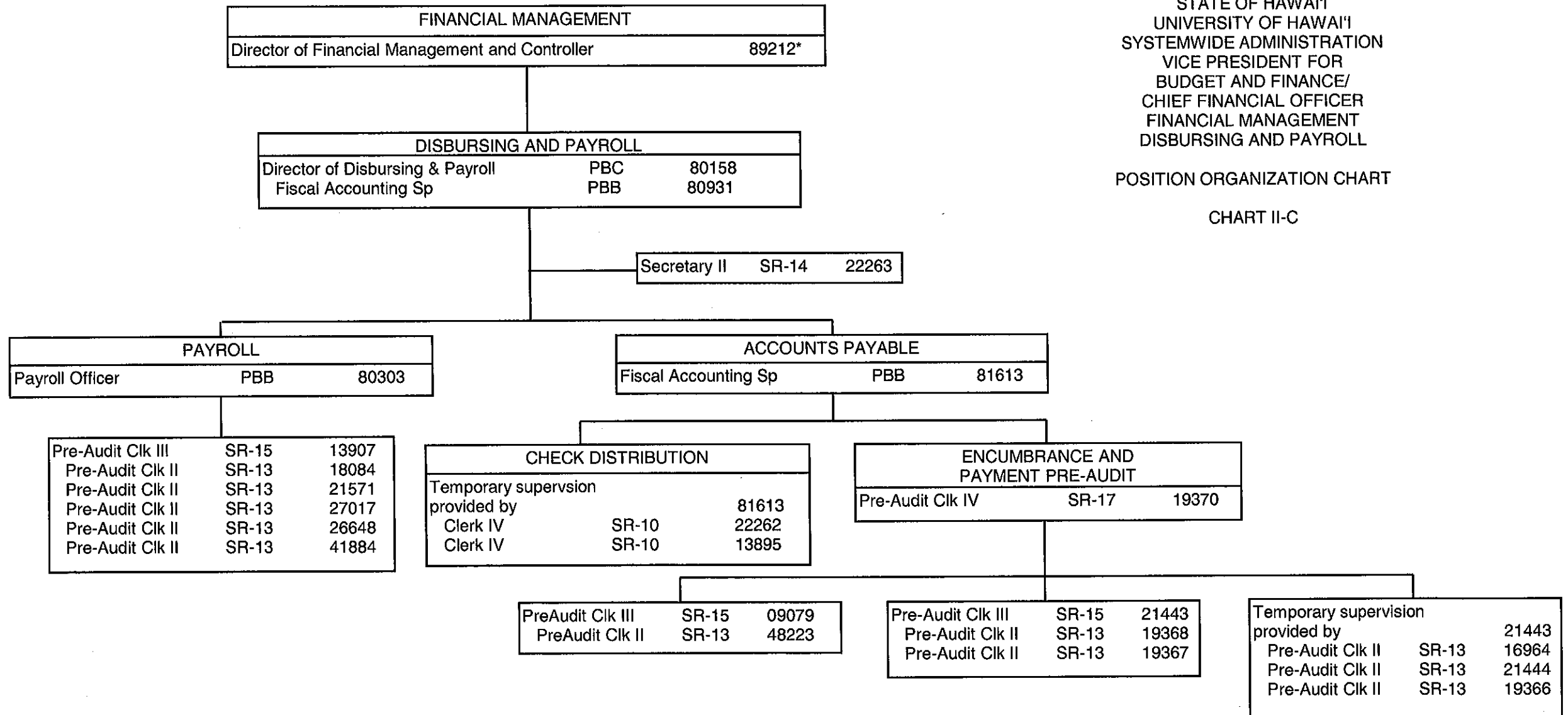


* Excluded from position count, this page
** Excluded from position count, using count from position 112678

STATE OF HAWAII
UNIVERSITY OF HAWAII
SYSTEMWIDE ADMINISTRATION
VICE PRESIDENT FOR
BUDGET AND FINANCE/
CHIEF FINANCIAL OFFICER
FINANCIAL MANAGEMENT
DISBURSING AND PAYROLL

POSITION ORGANIZATION CHART

CHART II-C



* Excluded from position count, this page

Perm
General Funds 22.00

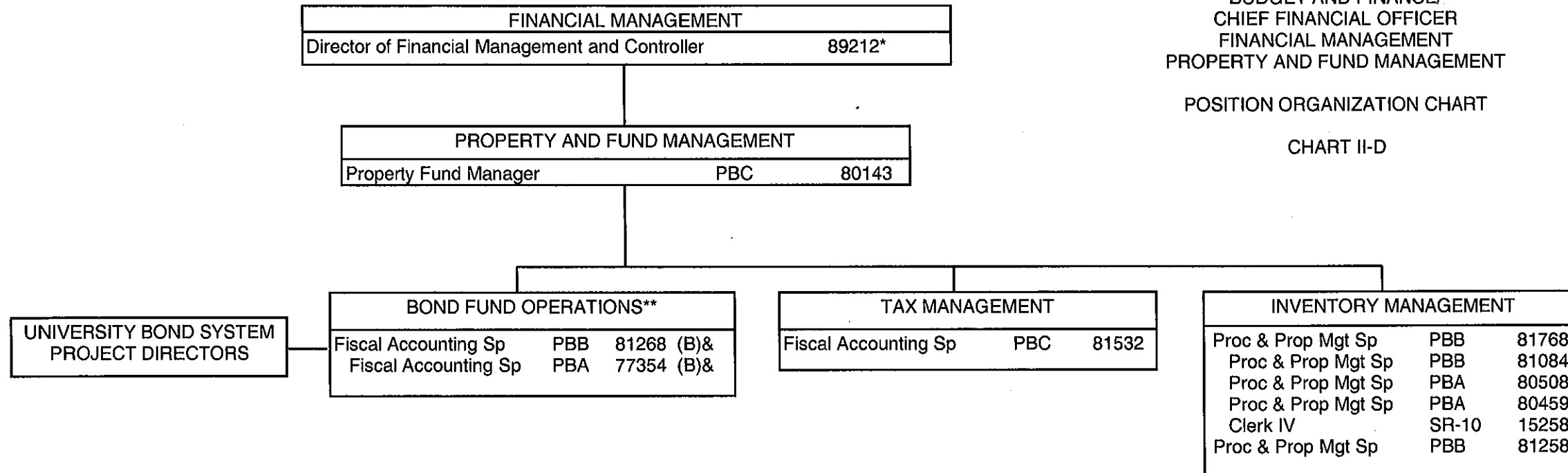
CHART UPDATED
JUL - 1 2007

DATE

STATE OF HAWAII
UNIVERSITY OF HAWAII
SYSTEMWIDE ADMINISTRATION
VICE PRESIDENT FOR
BUDGET AND FINANCE/
CHIEF FINANCIAL OFFICER
FINANCIAL MANAGEMENT
PROPERTY AND FUND MANAGEMENT

POSITION ORGANIZATION CHART

CHART II-D



* Excluded from position count, this page

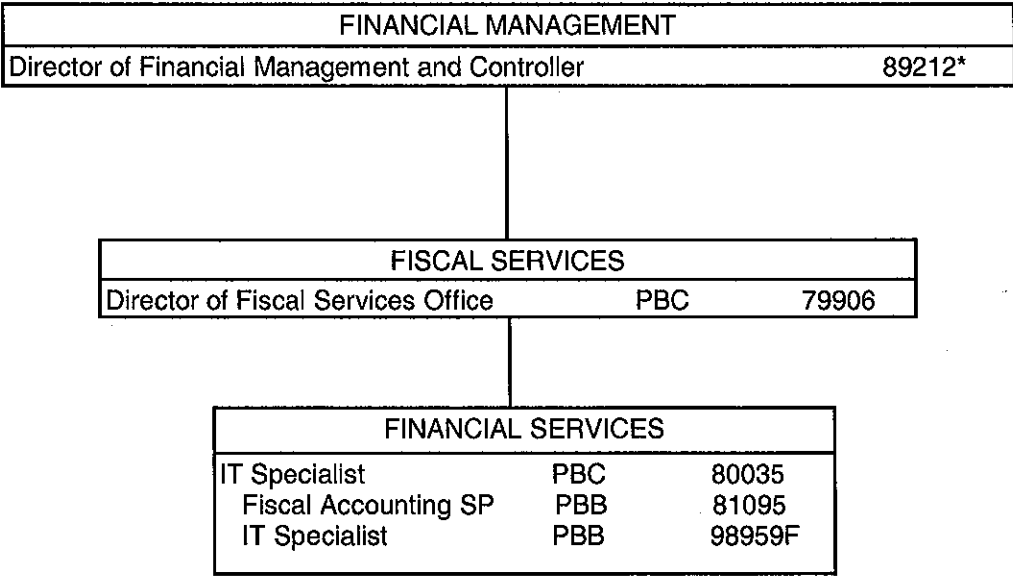
& Position count on this chart not part of appropriation for
UOH 903, reflected organizationally on this chart

** Fiscal Accounting Sp 98963F (50%) - To Be Announced

Perm
General Funds 8.50
(B) Special Funds 2.00&

CHART UPDATED

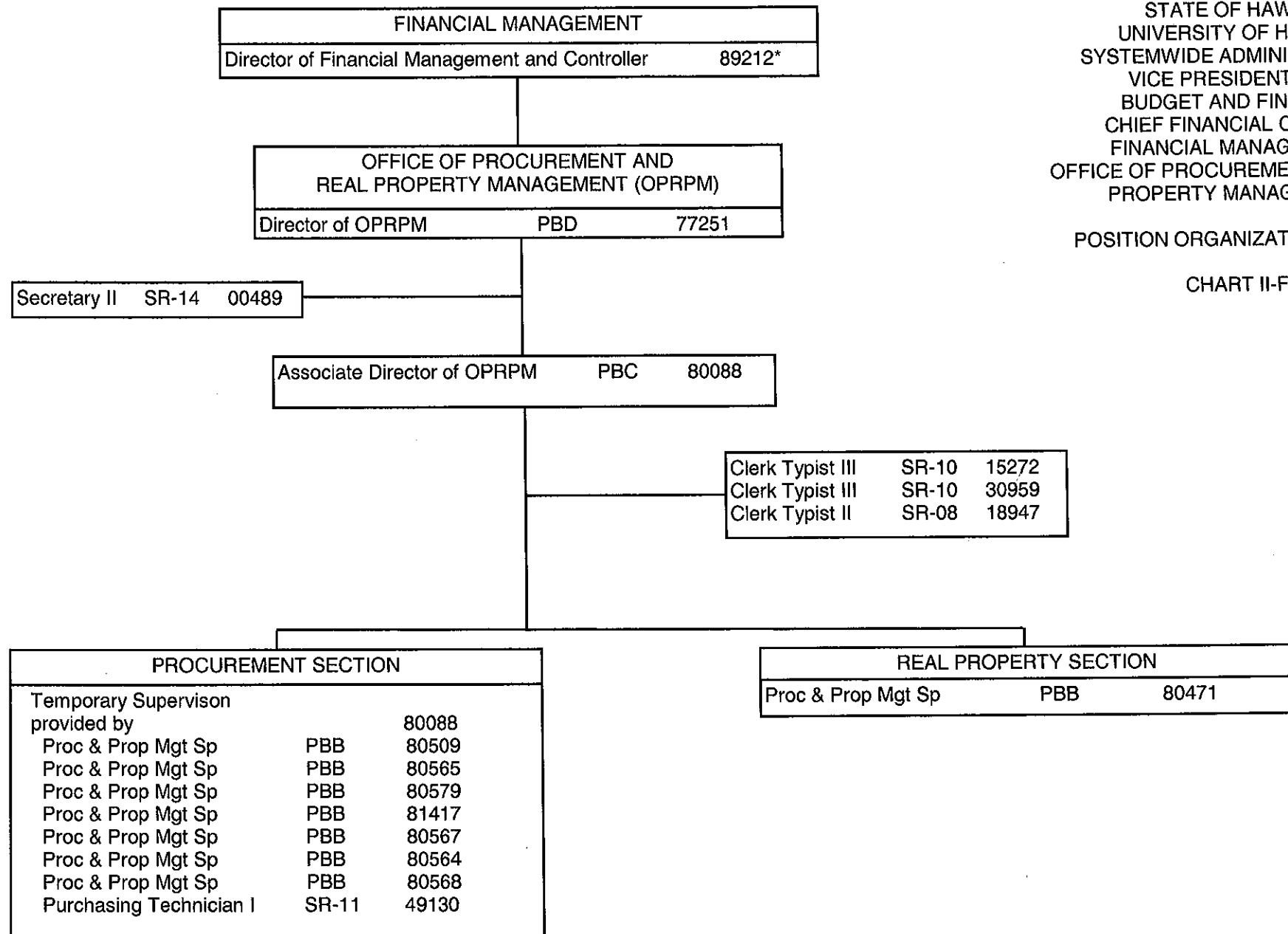
DATE JUL - 1 2007



STATE OF HAWAI'I
UNIVERSITY OF HAWAI'I
SYSTEMWIDE ADMINISTRATION
VICE PRESIDENT FOR
BUDGET AND FINANCE/
CHIEF FINANCIAL OFFICER
FINANCIAL MANAGEMENT
FISCAL SERVICES

POSITION ORGANIZATION CHART
CHART II-E

* Excluded from position count, this page



STATE OF HAWAII
UNIVERSITY OF HAWAII
SYSTEMWIDE ADMINISTRATION
VICE PRESIDENT FOR
BUDGET AND FINANCE/
CHIEF FINANCIAL OFFICER
FINANCIAL MANAGEMENT
OFFICE OF PROCUREMENT AND REAL
PROPERTY MANAGEMENT

POSITION ORGANIZATION CHART

CHART II-F

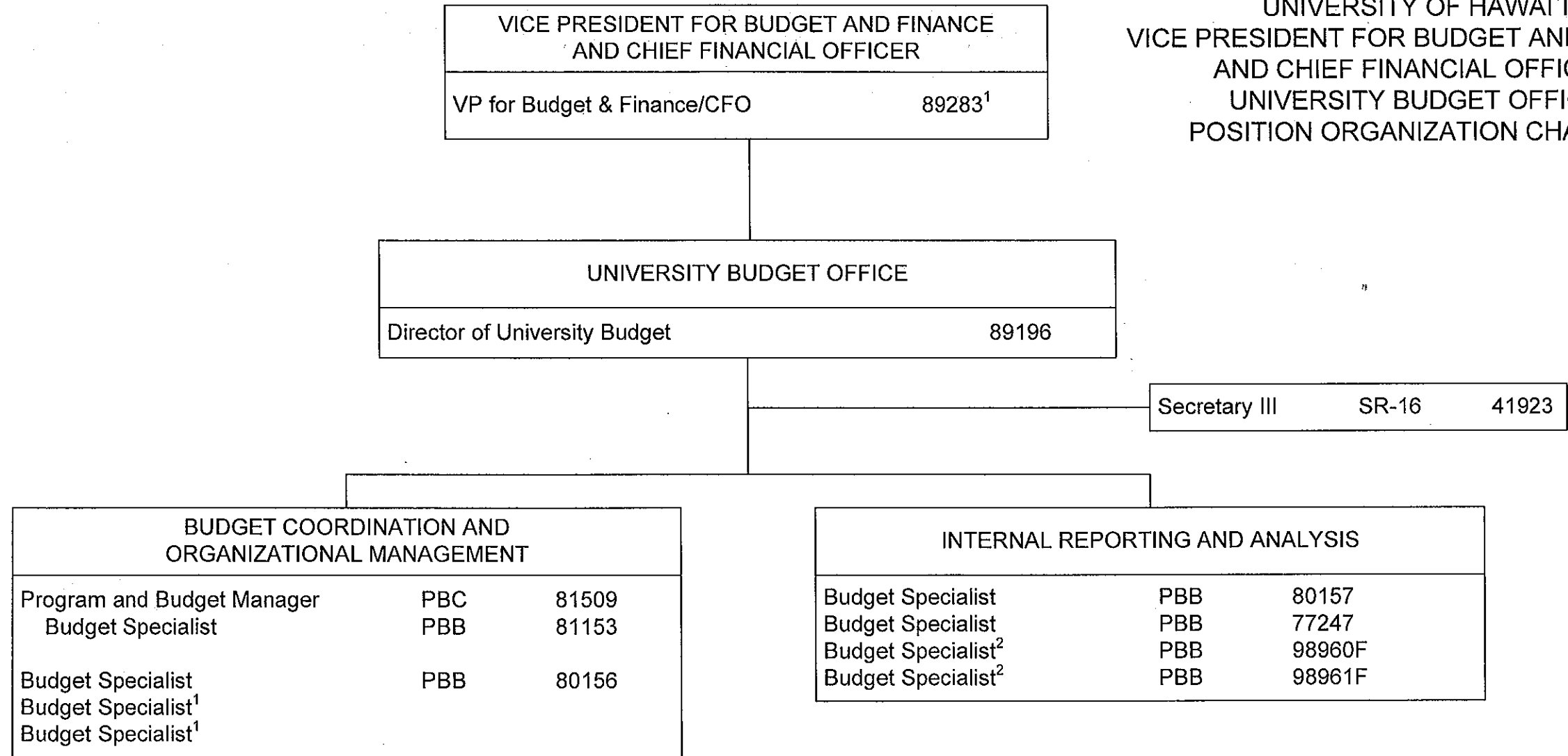
* Excluded from position count, this page

Perm
General Funds 15.00

CHART UPDATED

DATE JUL - 1 2007

STATE OF HAWAII
UNIVERSITY OF HAWAII
VICE PRESIDENT FOR BUDGET AND FINANCE
AND CHIEF FINANCIAL OFFICER
UNIVERSITY BUDGET OFFICE
POSITION ORGANIZATION CHART III



¹ To Be Requested (positions deleted by 2005 Legislature)

² Position appropriated by 2007 Legislature

CHART UPDATED
DATE JUL - 1 2007

Perm
General Funds 9.00