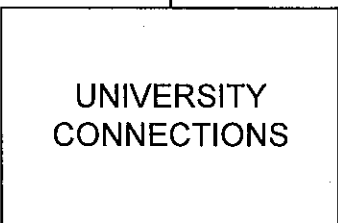
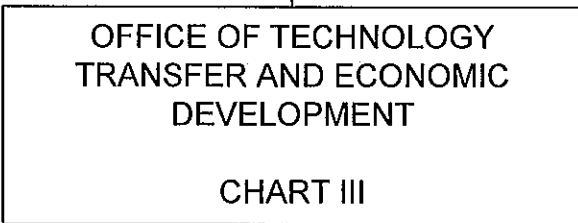
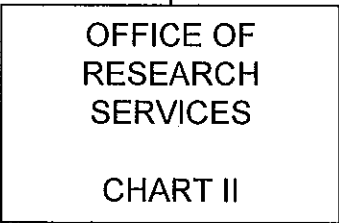
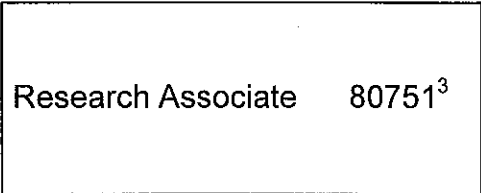
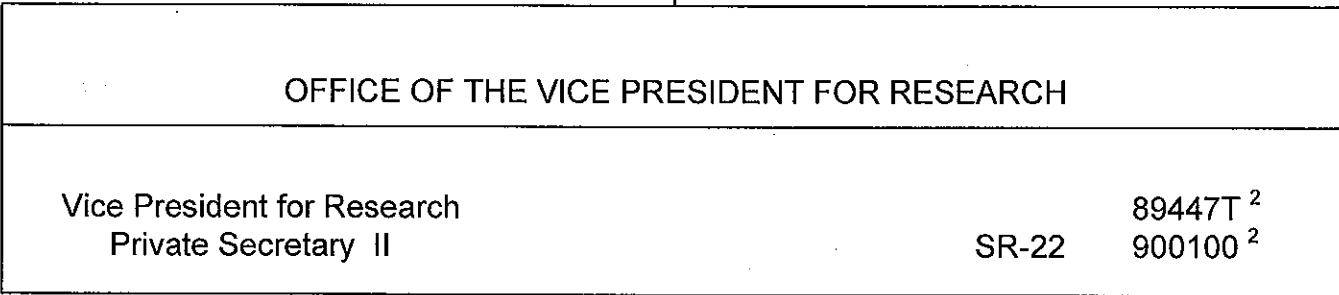


STATE OF HAWAI'I
UNIVERSITY OF HAWAI'I
SYSTEMWIDE ADMINISTRATION
VICE PRESIDENT FOR RESEARCH

POSITION ORGANIZATION CHART I



¹ Excluded from position count
² Temporary position and not part of the appropriated position count
³ Currently budgeted in UH Mānoa assigned to Systemwide

General Fund Perm
0.00

STATE OF HAWAII
UNIVERSITY OF HAWAII
SYSTEMWIDE ADMINISTRATION
OFFICE OF THE VICE PRESIDENT FOR RESEARCH
OFFICE OF RESEARCH SERVICES

POSITION ORGANIZATION CHART

CHART I

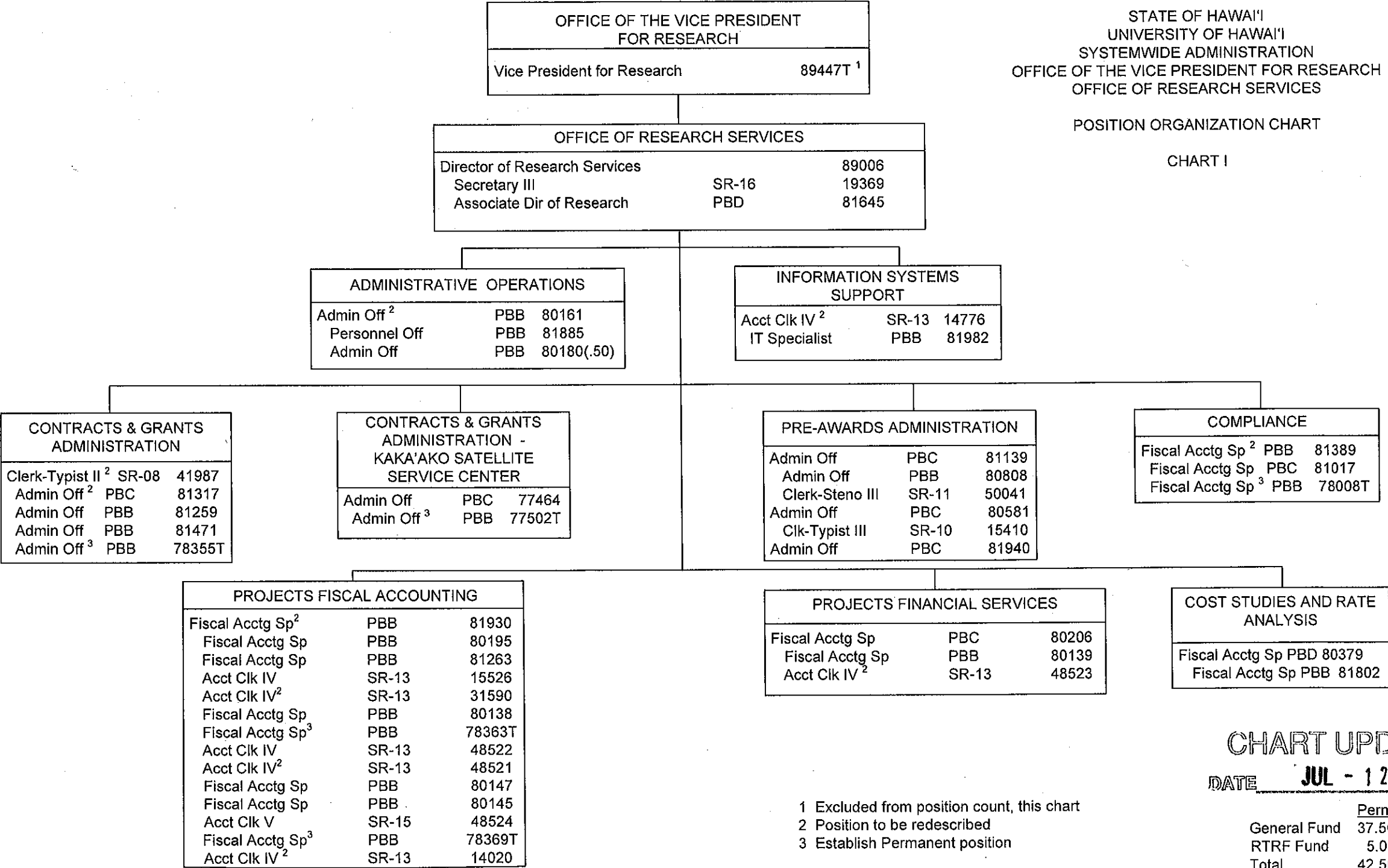


CHART UPDATED

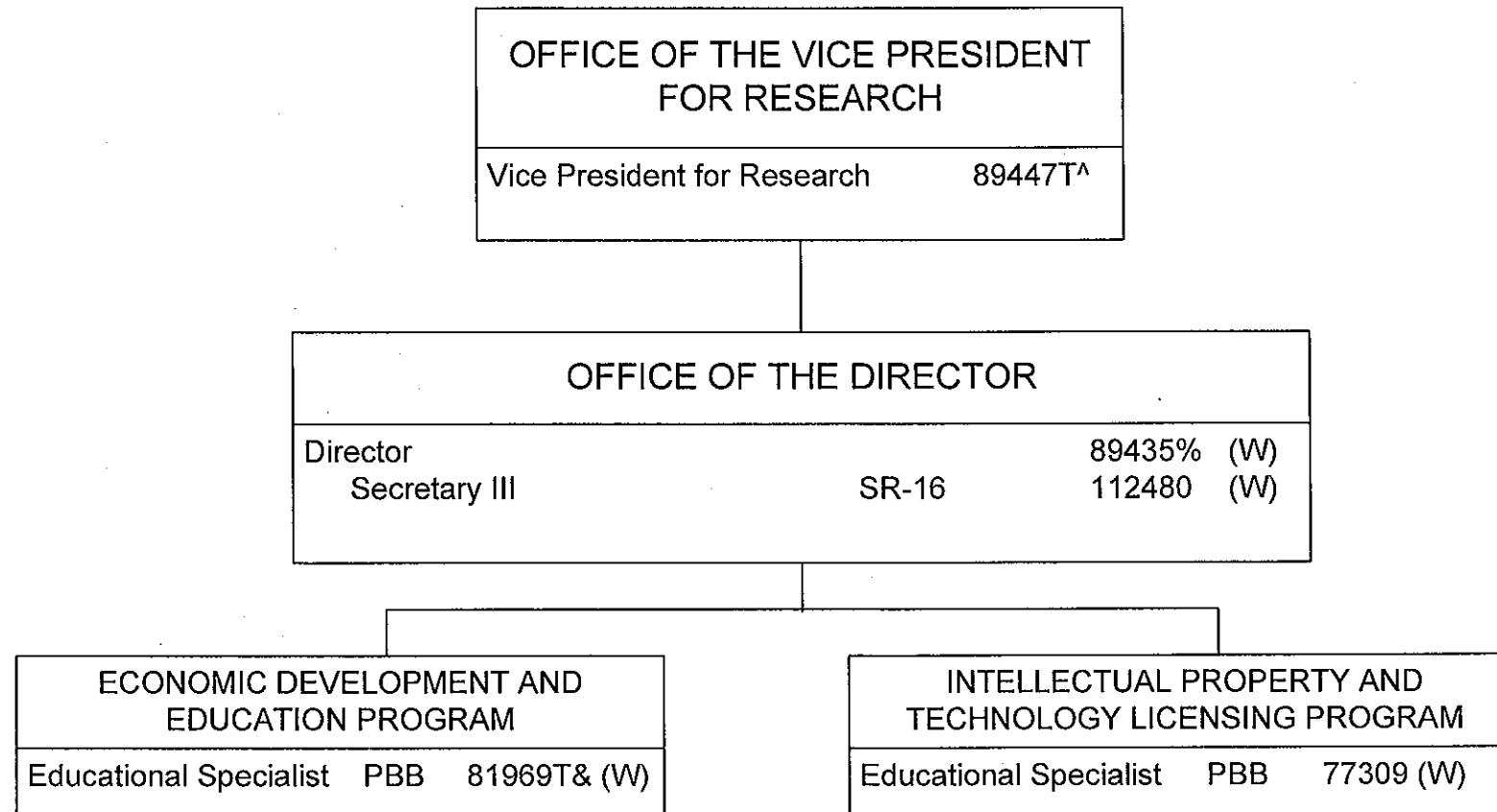
DATE JUL - 1 2007

- 1 Excluded from position count, this chart
2 Position to be redescribed
3 Establish Permanent position

	Perm
General Fund	37.50
RTRF Fund	5.00
Total	42.50

STATE OF HAWAII
 UNIVERSITY OF HAWAII
 SYSTEMWIDE ADMINISTRATION
 OFFICE OF THE VICE PRESIDENT FOR
 RESEARCH
 OFFICE OF TECHNOLOGY TRANSFER AND
 ECONOMIC DEVELOPMENT

POSITION ORGANIZATION CHART III



% To be redescribed

^ Excluded from position count, this chart

& Position count on this chart not part of the appropriation for UOH 903

Appropriated but not established: 96853F(W)

	Perm	Temp
General Fund	0.00	
Revolving Fund (W)	4.00	

CHART UPDATED

DATE JUL - 1 2007