

STATE OF HAWAII
UNIVERSITY OF HAWAII
UNIVERSITY OF HAWAII AT MĀNOA
INSTITUTE FOR ASTRONOMY
CHART I

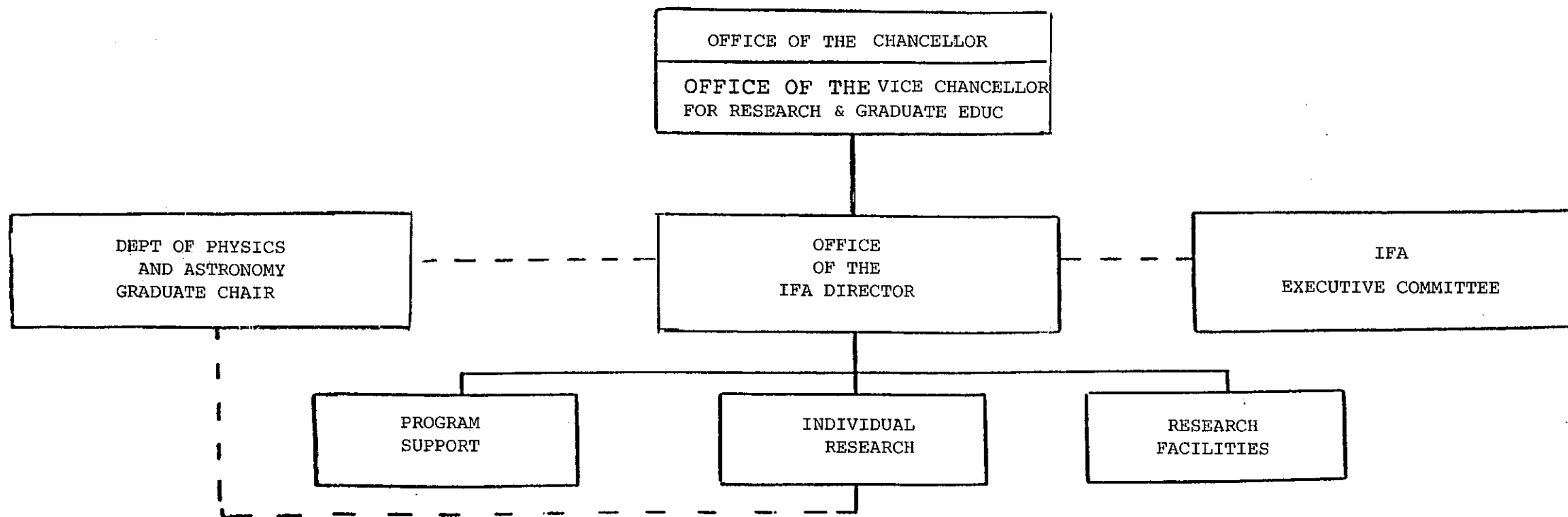


CHART UPDATED

DATE JUL - 1 2007

STATE OF HAWAII
UNIVERSITY OF HAWAII
UNIVERSITY OF HAWAII AT MĀNOA
INSTITUTE FOR ASTRONOMY
CHART 1A

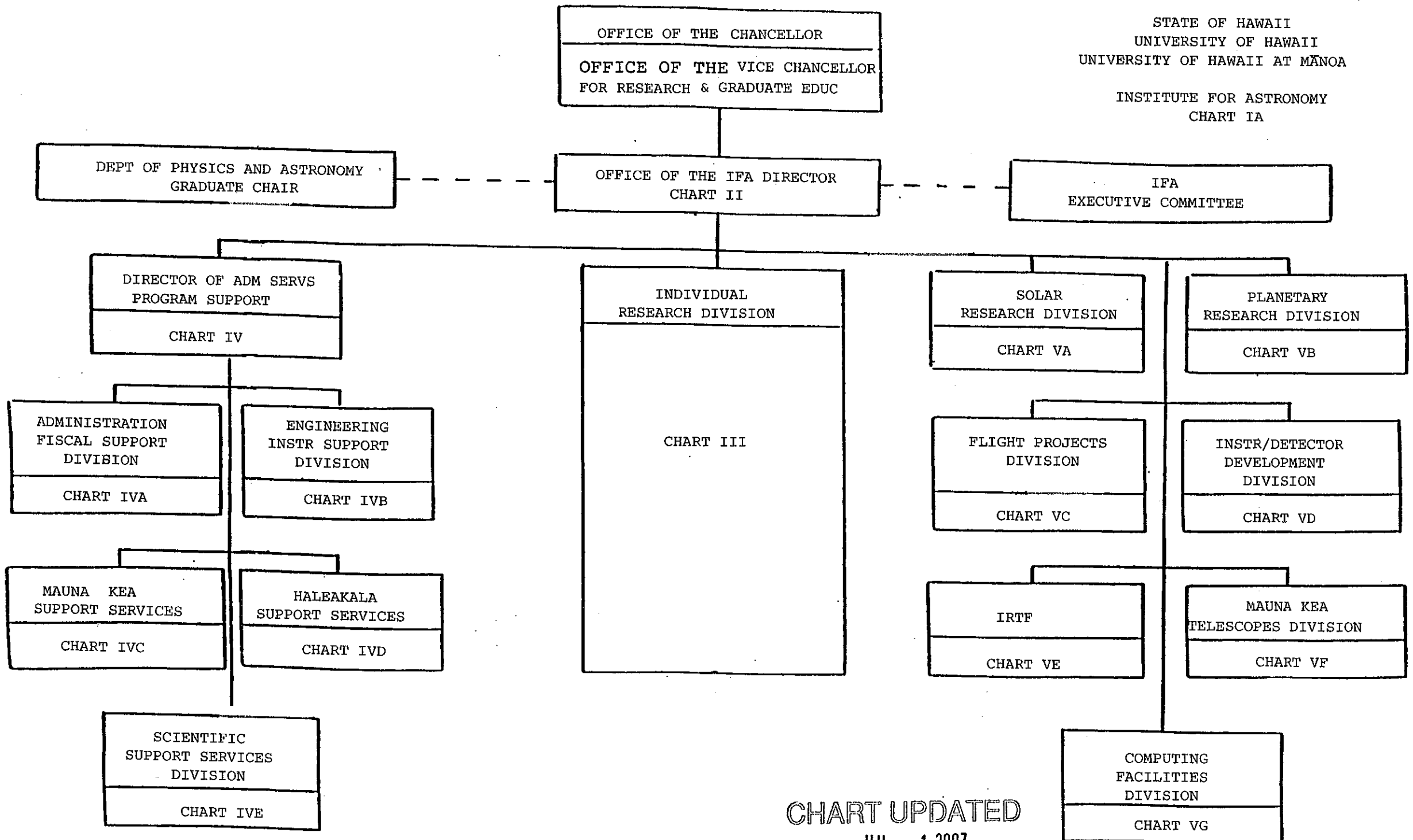
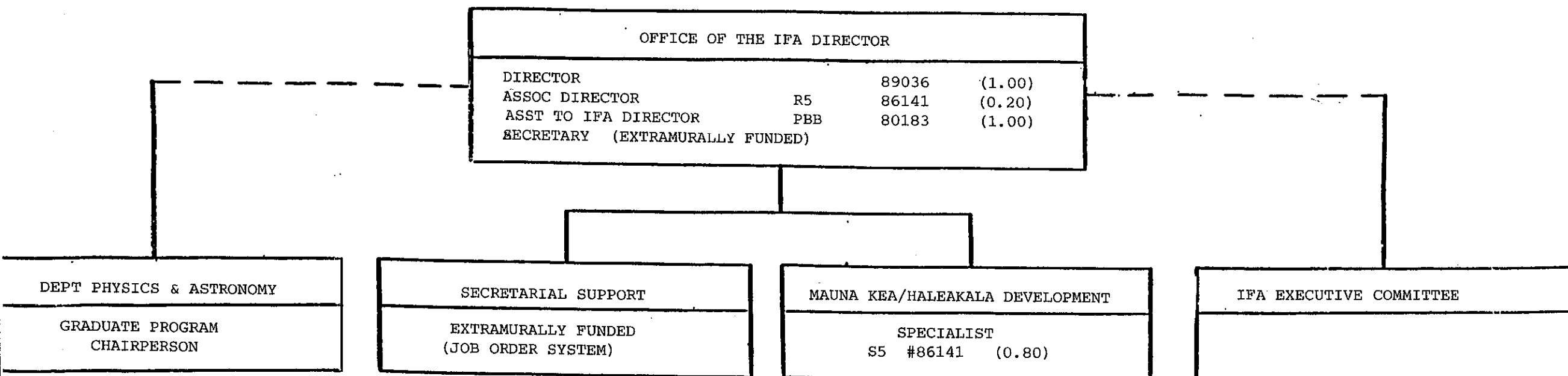


CHART UPDATED
DATE JUL - 1 2007

STATE OF HAWAII
UNIVERSITY OF HAWAII
UNIVERSITY OF HAWAII AT MĀNOA

INSTITUTE FOR ASTRONOMY
CHART II



General Funds 3.00

CHART UPDATED
DATE JUL - 1 2007

STATE OF HAWAII
UNIVERSITY OF HAWAII
UNIVERSITY OF HAWAII AT MĀNOA

INSTITUTE FOR ASTRONOMY
CHART III

OFFICE OF THE IFA DIRECTOR

DIVISION HEAD
INDIVIDUAL RESEARCH
(Selected from Research Staff)

SUPPORT STAFF

EXTRAMURALLY FUNDED
(JOB ORDER SYSTEM)

RESEARCH STAFF

Assoc Astronomer	R4	88341	(1.00)	Astronomer	R5	86104	(1.00)
Professor	I5	86123T	(0.50)	Astronomer	R5	87700	(1.00)
Assoc Astronomer	R4	88675	(1.00)	Specialist	S5	83609T	(0.50)
Assoc Astronomer	R4	84180	(1.00)	Astronomer	R5	88344	(1.00)
Astronomer	R5	86122	(1.00)	Specialist	S5	84796	(1.00)
Astronomer	R5	87456	(1.00)	Astronomer	R5	84897	(1.00)
Astronomer	R5	86143	(1.00)	Astronomer	R5	83551	(1.00)
Astronomer	R5	83136	(1.00)	Astronomer	R5	84250	(1.00)
Astronomer	R5	82040	(1.00)	Assoc Astronomer	R4	83927	(1.00)
Professor	I5	86127T	(0.50)	Astronomer	R5	86130	(1.00)
Astronomer	R5	86142	(0.90)	Astronomer	R5	82010	(0.90)
Astronomer	R5	88670	(1.00)	Astronomer	R5	86136	(1.00)
Astronomer	R5	82472	(1.00)	Astronomer	R5	84400	(1.00)
Astronomer	R5	82580	(1.00)	Specialist	S5	83058	(1.00)
Astronomer	R5	84573	(1.00)	Professor	I5	84865	(1.00)
Astronomer	R5	88668	(1.00)	Specialist	S5	84571	(1.00)
Astronomer	R5	86120	(1.00)	Assoc Astronomer	R4	86138	(1.00)
Astronomer	R5	88673	(1.00)	Asst Astronomer	R3	86145	(1.00)
Astronomer	R5	88340	(1.00)	Asst Astronomer	R3	86128	(1.00)
Asst Astronomer	R3	86321T	(1.00)	Astronomer	R5	86105T	(0.50)
Asst Astronomer	R3	86113	(1.00)	Asst Astronomer	R3	88666	(1.00)
				Assoc Astronomer	R4	88669	(1.00)

GRADUATE ASSISTANTS

EXTRAMURALLY FUNDED

General Funds

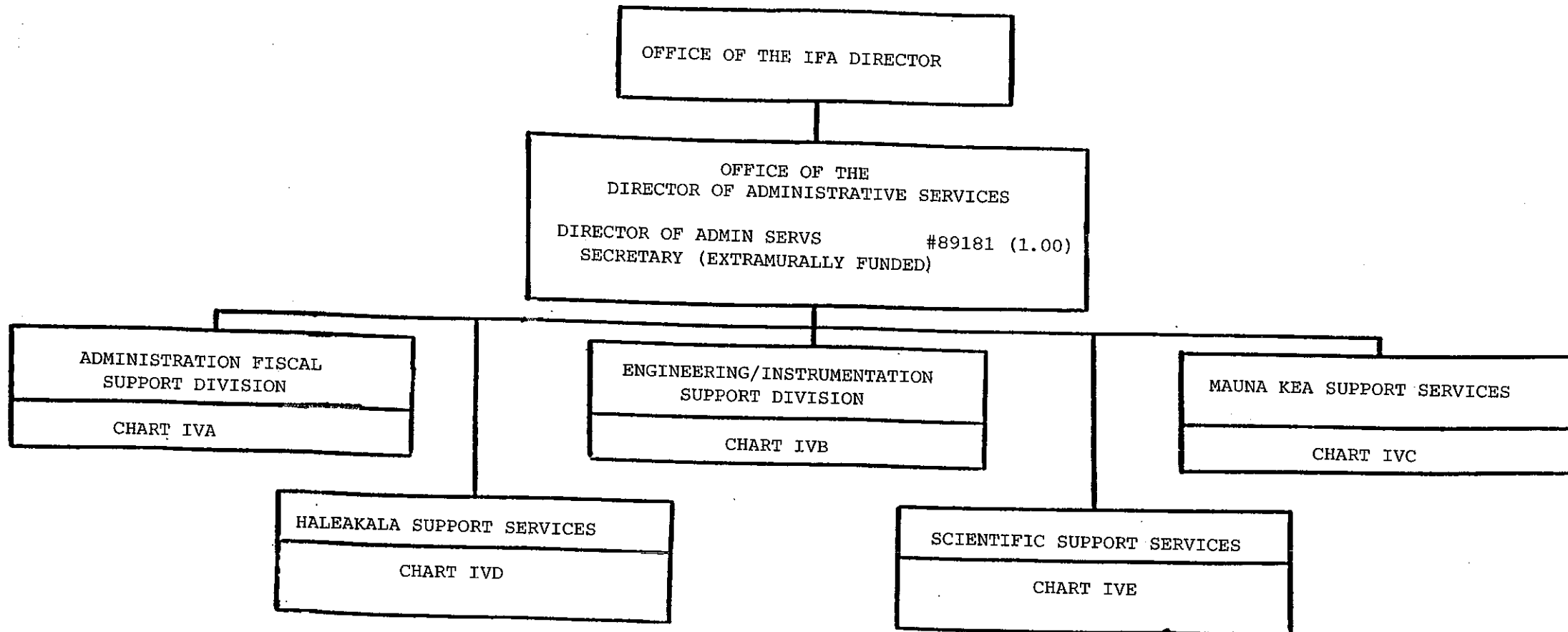
37.80

CHART UPDATED

DATE JUL - 1 2007

STATE OF HAWAII
UNIVERSITY OF HAWAII
UNIVERSITY OF HAWAII AT MĀNOA

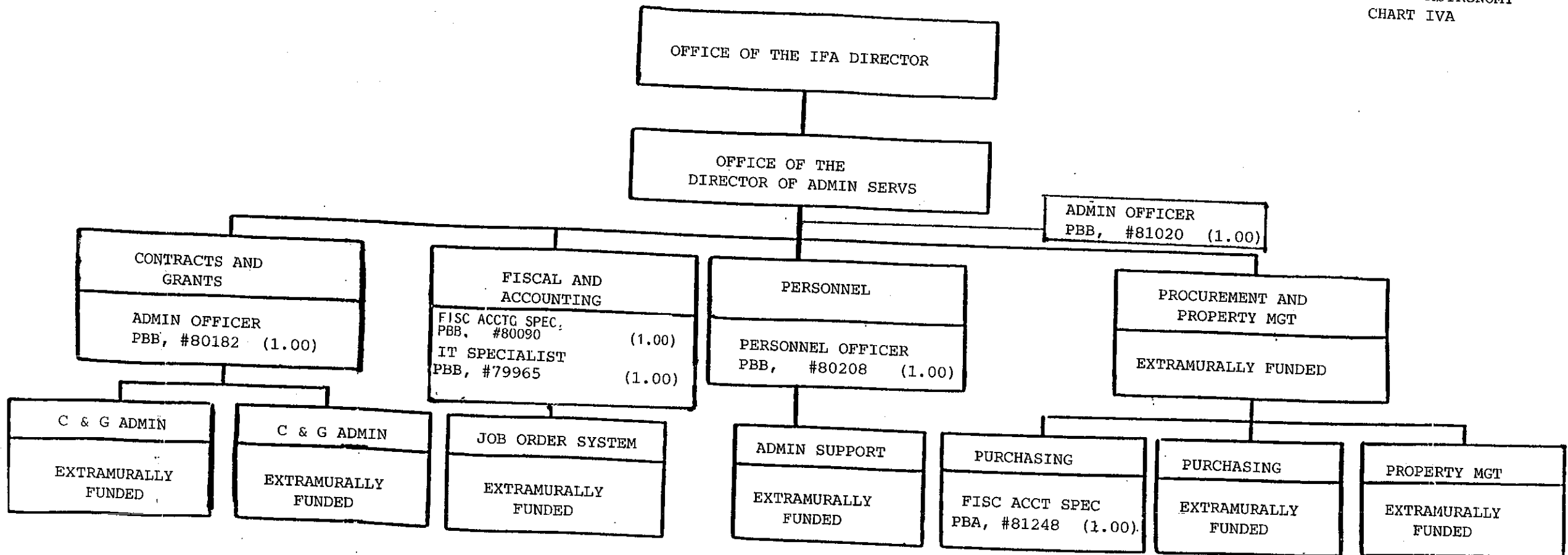
INSTITUTE FOR ASTRONOMY
CHART IV



General Funds 1.00

CHART UPDATED
DATE JUL - 1 2007

STATE OF HAWAII
 UNIVERSITY OF HAWAII
 UNIVERSITY OF HAWAII AT MĀNOA
 INSTITUTE FOR ASTRONOMY
 CHART IVA

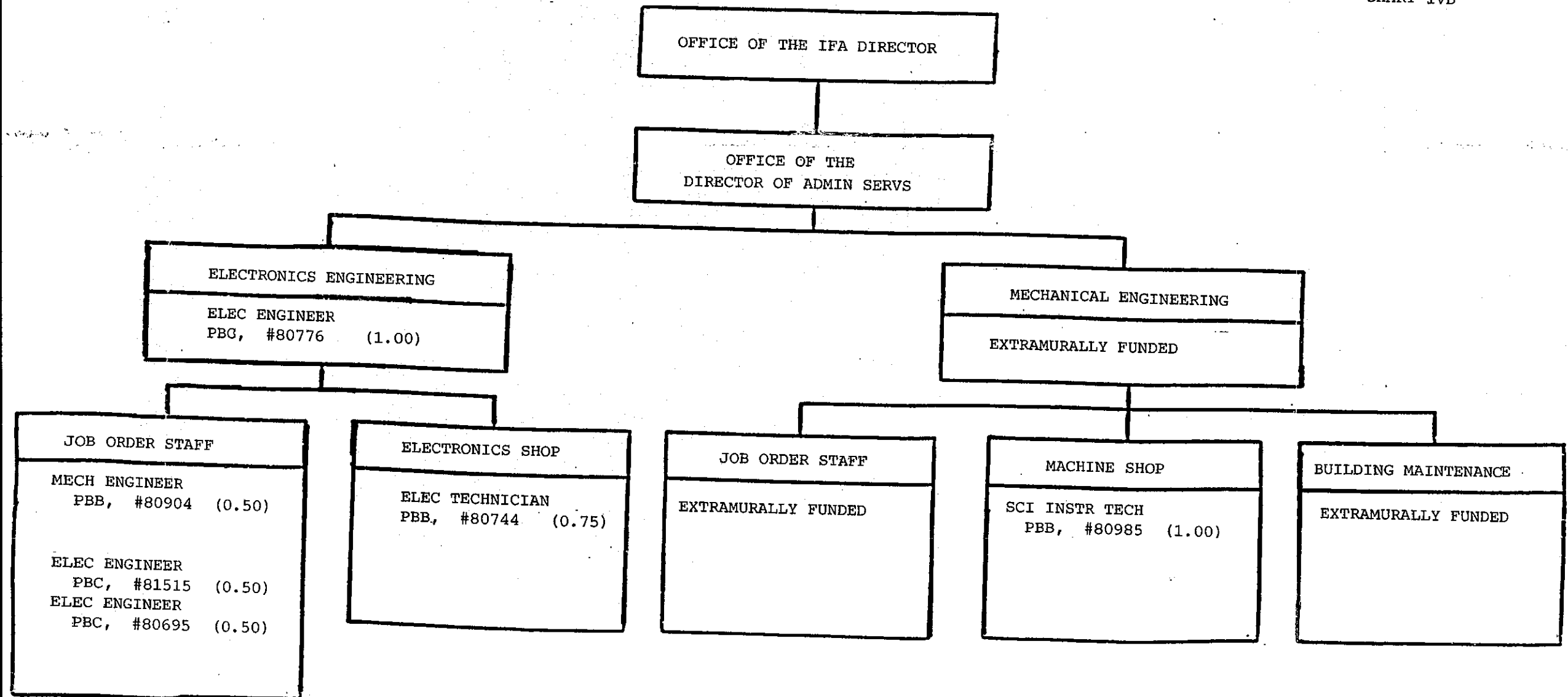


General Funds 6.00

CHART UPDATED
 DATE JUL - 1 2007

STATE OF HAWAII
UNIVERSITY OF HAWAII
UNIVERSITY OF HAWAII AT MĀNOA

INSTITUTE FOR ASTRONOMY
CHART IVB



General Funds 4.25

CHART UPDATED

DATE JUL - 1 2007

MAUNA KEA SUPPORT SERVICES

STATE OF HAWAII
UNIVERSITY OF HAWAII
UNIVERSITY OF HAWAII AT MĀNOA

INSTITUTE FOR ASTRONOMY
CHART IVC

OFFICE OF THE IFA DIRECTOR

OFFICE OF THE
DIRECTOR OF ADMIN SERVS

MGR MAUNA KEA SUPPORT SERVICES

SPECIALLY FUNDED

UTILITIES

SPECIALLY FUNDED

VEHICLES

SPECIALLY FUNDED

ACCOMMODATIONS

SPECIALLY FUNDED

ACCOUNTING ADMINISTRATION

SPECIALLY FUNDED

ROAD MAINTENANCE

SPECIALLY FUNDED

VISITOR CENTER

SPECIALLY FUNDED

LIBRARY

SPECIALLY FUNDED

CHART UPDATED

DATE JUL - 1 2007

STATE OF HAWAII
UNIVERSITY OF HAWAII
UNIVERSITY OF HAWAII AT MĀNOA

INSTITUTE FOR ASTRONOMY
CHART IVD

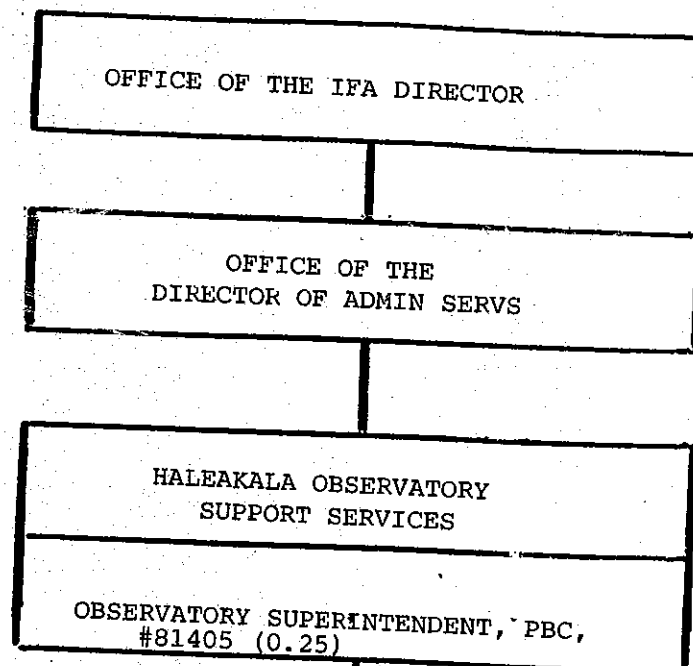
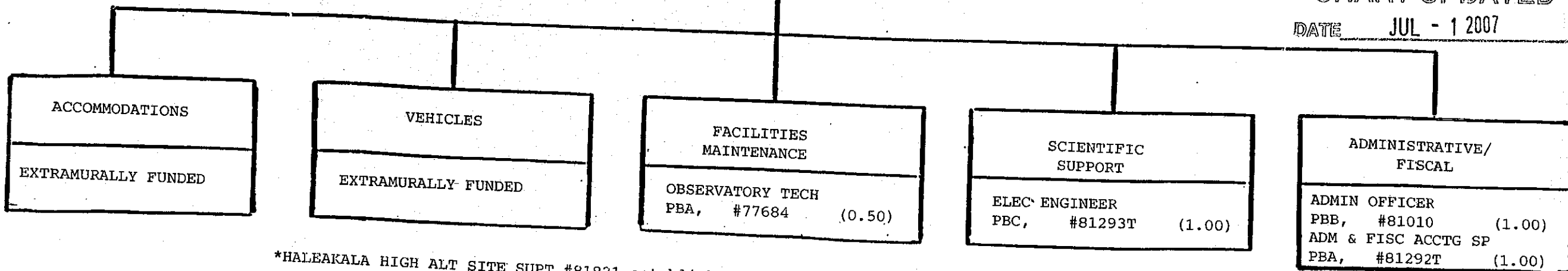


CHART UPDATED

DATE JUL - 1 2007



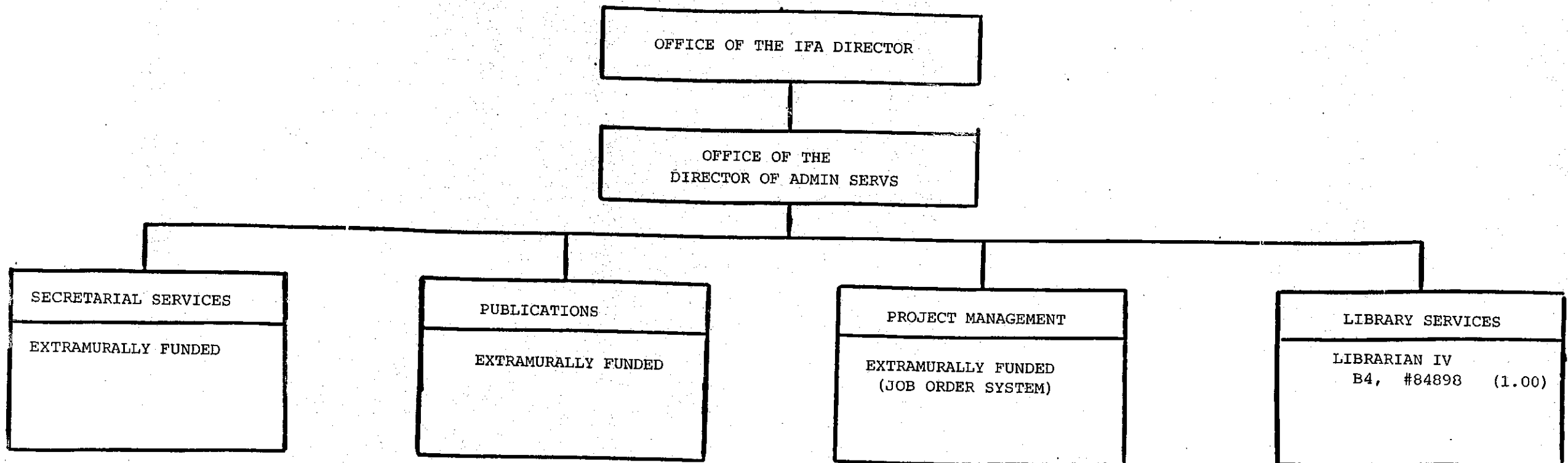
*HALEAKALA HIGH ALT SITE SUPT, #81821 established on 6/21/91, however, it was never reflected on organizational chart. (1.00)

*97002F Bldng Maint Worker (1.00)
*97003F Grounds Maint Worker (1.00)

General Funds 4.75

STATE OF HAWAII
UNIVERSITY OF HAWAII
UNIVERSITY OF HAWAII AT MĀNOA

INSTITUTE FOR ASTRONOMY
CHART IVE



General Funds 1.00

CHART UPDATED
DATE JUL - 1 2007

STATE OF HAWAII
UNIVERSITY OF HAWAII
UNIVERSITY OF HAWAII AT MĀNOA

INSTITUTE FOR ASTRONOMY
CHART VA

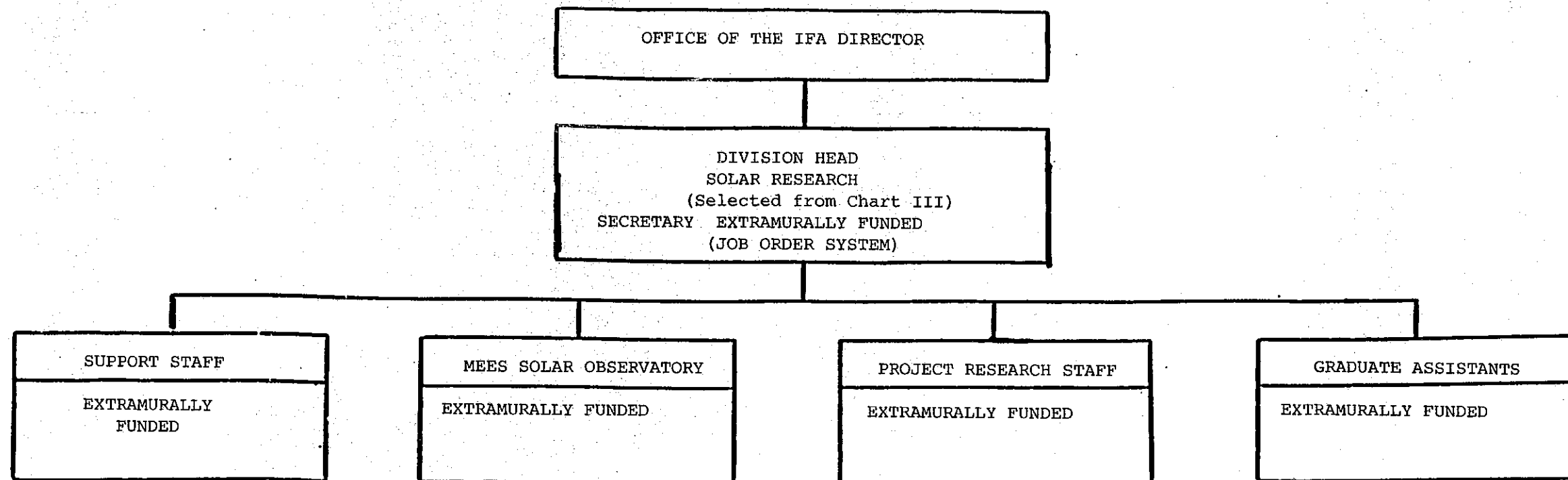


CHART UPDATED
DATE JUL - 1 2007

STATE OF HAWAII
UNIVERSITY OF HAWAII
UNIVERSITY OF HAWAII AT MĀNOA
INSTITUTE FOR ASTRONOMY
CHART VB

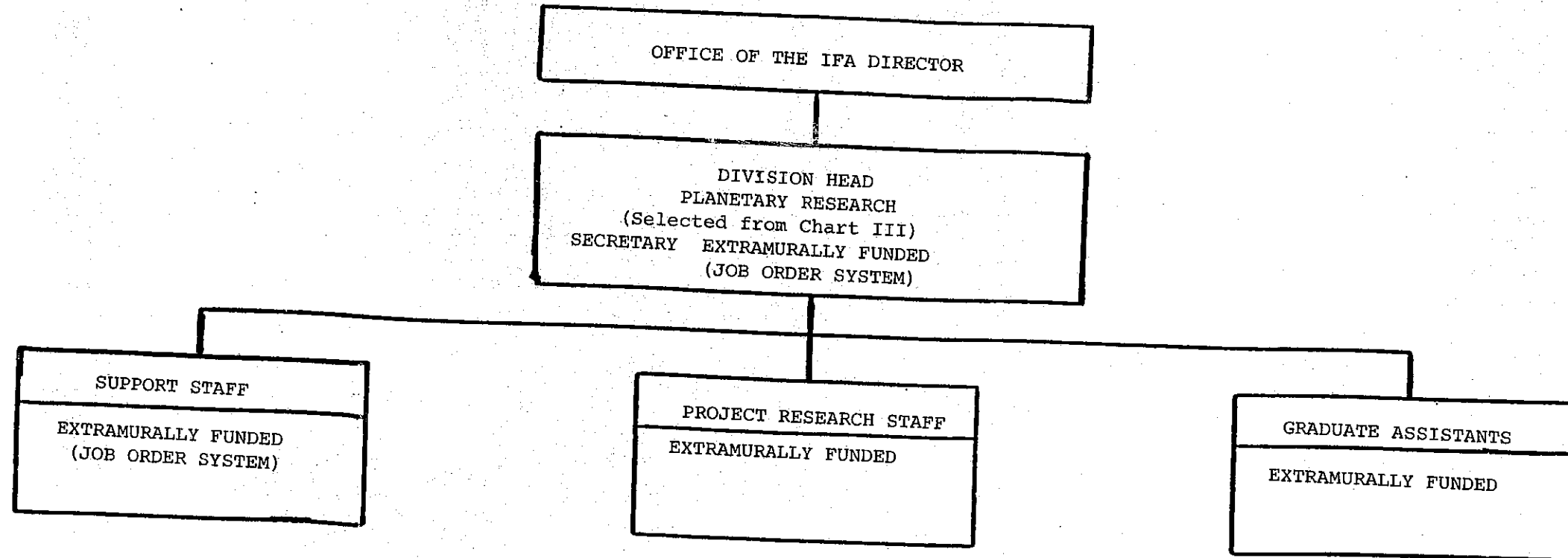


CHART UPDATED
JUL - 1 2007
DATE

STATE OF HAWAII
UNIVERSITY OF HAWAII
UNIVERSITY OF HAWAII AT MĀNOA

INSTITUTE FOR ASTRONOMY
CHART VC

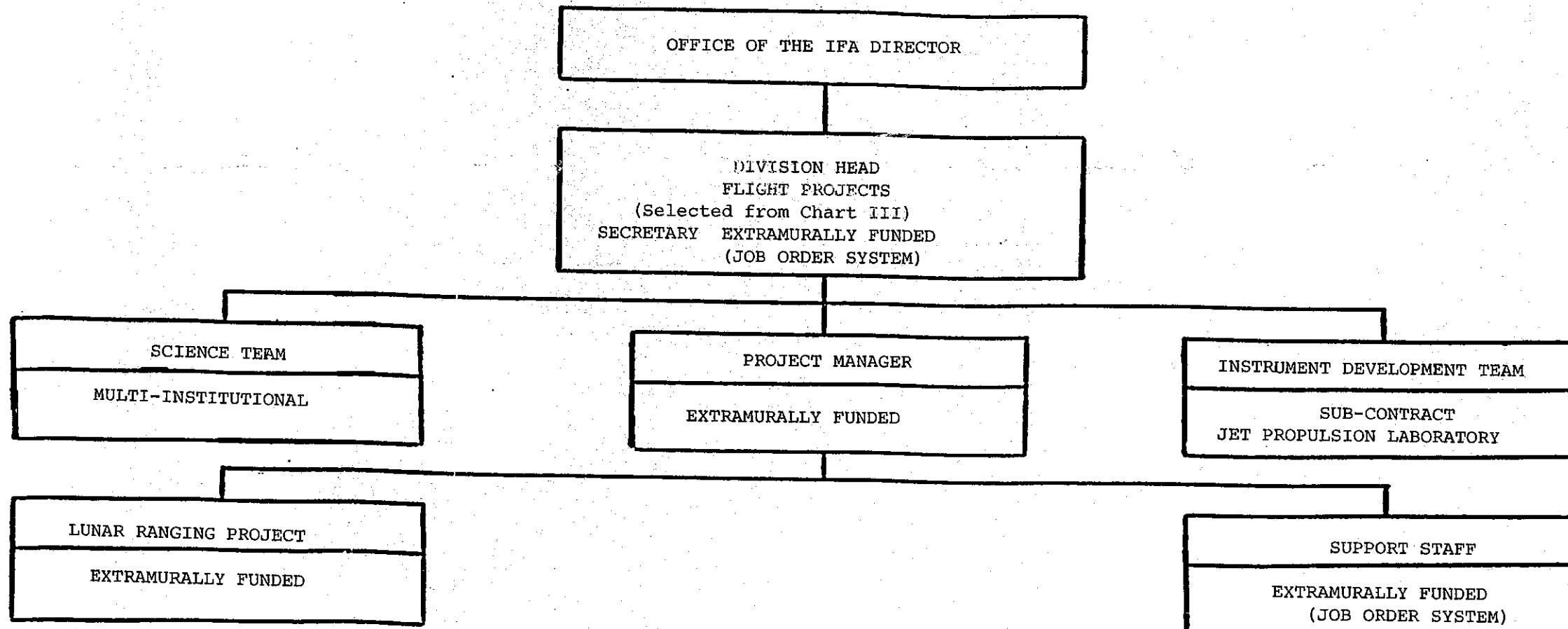


CHART UPDATED

DATE JUL - 1 2007

STATE OF HAWAII
UNIVERSITY OF HAWAII
UNIVERSITY OF HAWAII AT MĀNOA

INSTITUTE FOR ASTRONOMY
CHART VD

OFFICE OF THE IFA DIRECTOR

DIVISION HEAD
INSTRUMENT/DETECTOR DEVELOPMENT
(Selected from Chart III)
SECRETARY EXTRAMURALLY FUNDED
(JOB ORDER SYSTEM)

STAFF INSTRUMENTATION SUPPORT

EXTRAMURALLY FUNDED
(JOB ORDER SYSTEM)

ADVANCED DEVELOPMENT TECHNOLOGY

EXTRAMURALLY FUNDED

FACILITY INSTRUMENTATION SUPPORT

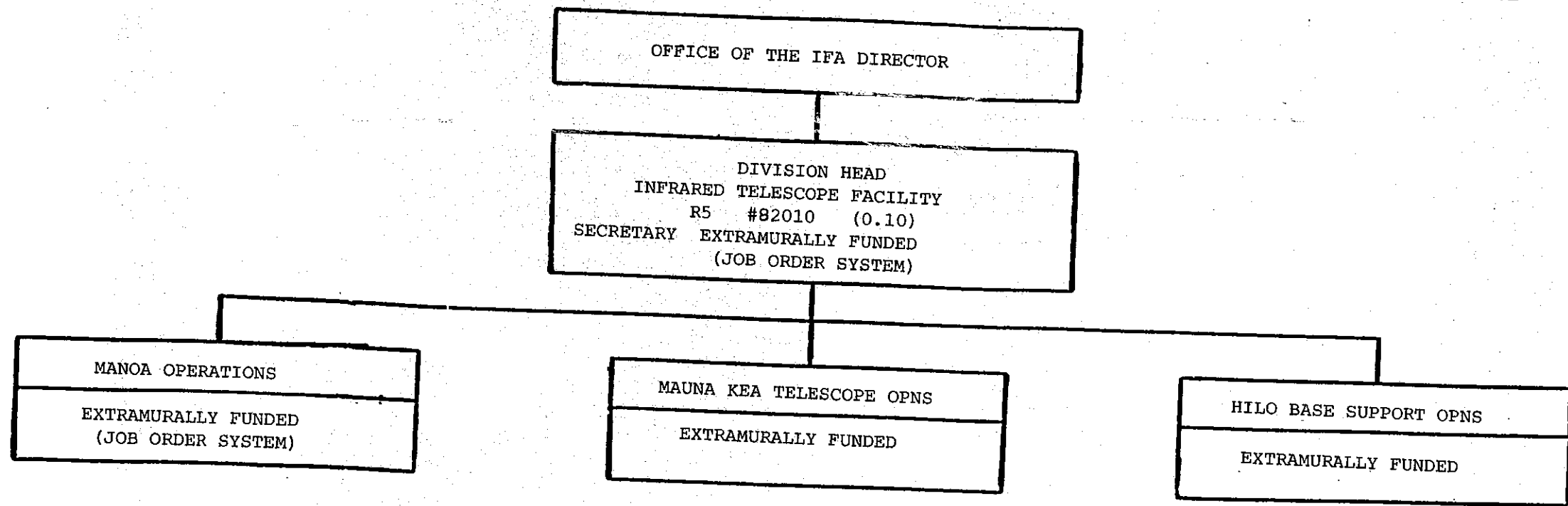
EXTRAMURALLY FUNDED
(JOB ORDER SYSTEM)

CHART UPDATED

DATE JUL - 1 2007

STATE OF HAWAII
UNIVERSITY OF HAWAII
UNIVERSITY OF HAWAII AT MĀNOA

INSTITUTE FOR ASTRONOMY
CHART VE



General Funds 0.10

STATE OF HAWAII
UNIVERSITY OF HAWAII
UNIVERSITY OF HAWAII AT MĀNOA

INSTITUTE FOR ASTRONOMY
CHART VF

OFFICE OF THE IFA DIRECTOR

DIVISION HEAD
MAUNA KEA TELESCOPE OPNS
R5 #86142 (0.10)

MANOA OPERATIONS

EXTRAMURALLY FUNDED

TELESCOPE OPERATIONS

ELEC ENGINEER PBB #80738 (0.50)
BLDG MAINT WORKER I BC-09 #25855 (1.00)

HILO BASE SUPPORT OPNS

ADMIN OFFICER PBB #81571 (1.00)

General Funds 2.60

CHART UPDATED

DATE JUL - 1 2007

STATE OF HAWAII
UNIVERSITY OF HAWAII
UNIVERSITY OF HAWAII AT MĀNOA

INSTITUTE FOR ASTRONOMY
CHART VG

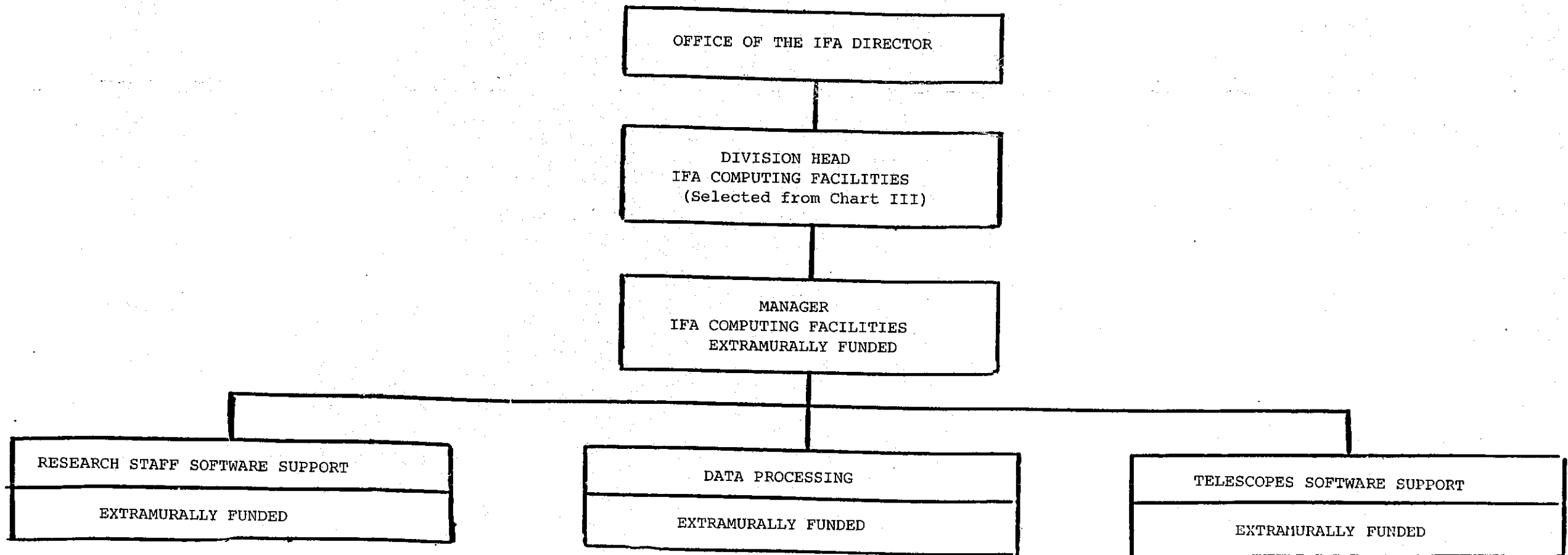


CHART UPDATED

DATE JUL - 1 2007