

CHART UPDATED
DATE JUL - 1 2007

State of Hawaii
University of Hawaii
University of Hawaii at Manoa
OFFICE OF THE CHANCELLOR
ORGANIZATION CHART
CHART I-A

GENERAL FUND FTE: 6.00

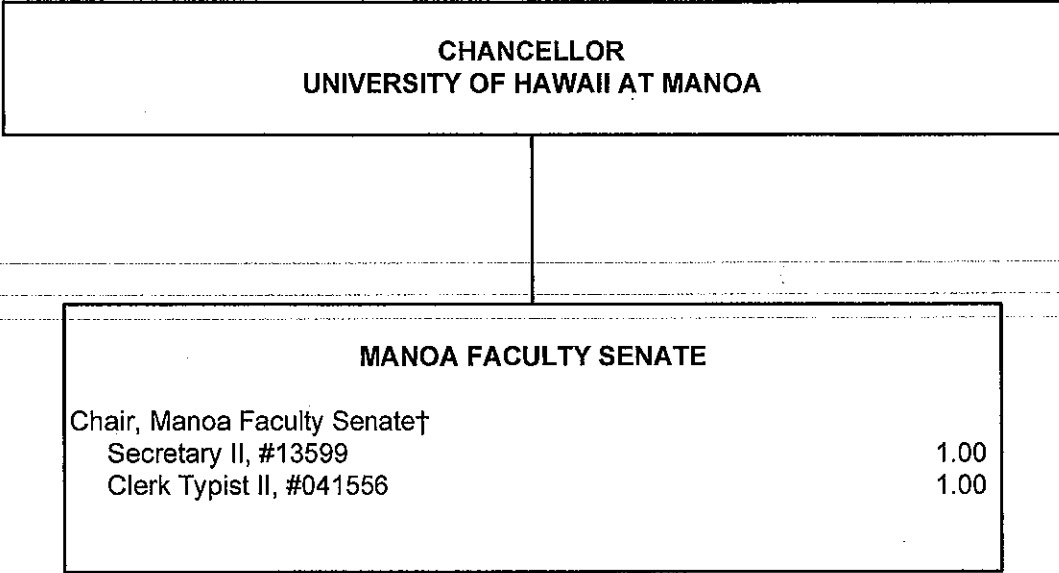
OFFICE OF THE CHANCELLOR UNIVERSITY OF HAWAII AT MANOA	
Chancellor, #89261	1.00
Private Secretary II, SR-22, #100053	1.00
Administrative Assistant, #89365	1.00
Sec I, SR-12, #15584	1.00
Institutional Support Specialist*	
Executive Assistant, #89117	1.00
Administrative & Fiscal Support Specialist, #77952	1.00
Special Advisor for Hawaiian Affairs*	
<i>Faculty Athletic Representative (0.50)†</i>	

*New, position number to be determined

†Position annually elected by the Manoa Chancellor

CHART UPDATED
DATE JUL - 1 2007

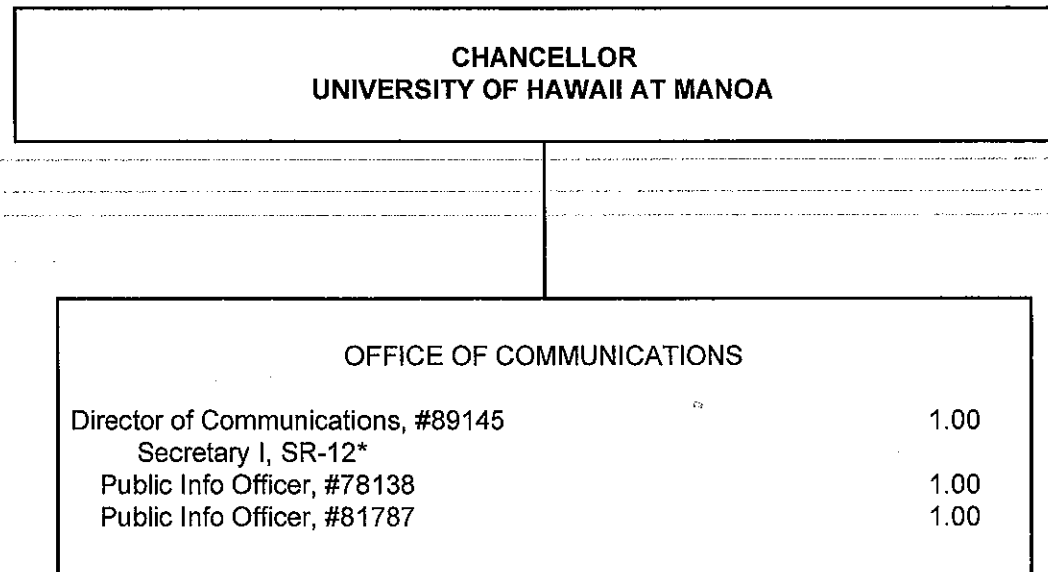
GENERAL FUNDS FTE: 2.00



†Position annually elected by the Manoa Faculty Senate

State of Hawaii
University of Hawaii
University of Hawaii at Manoa
OFFICE OF THE CHANCELLOR
ORGANIZATION CHART
CHART I-C

GENERAL FUND FTE: 3.00

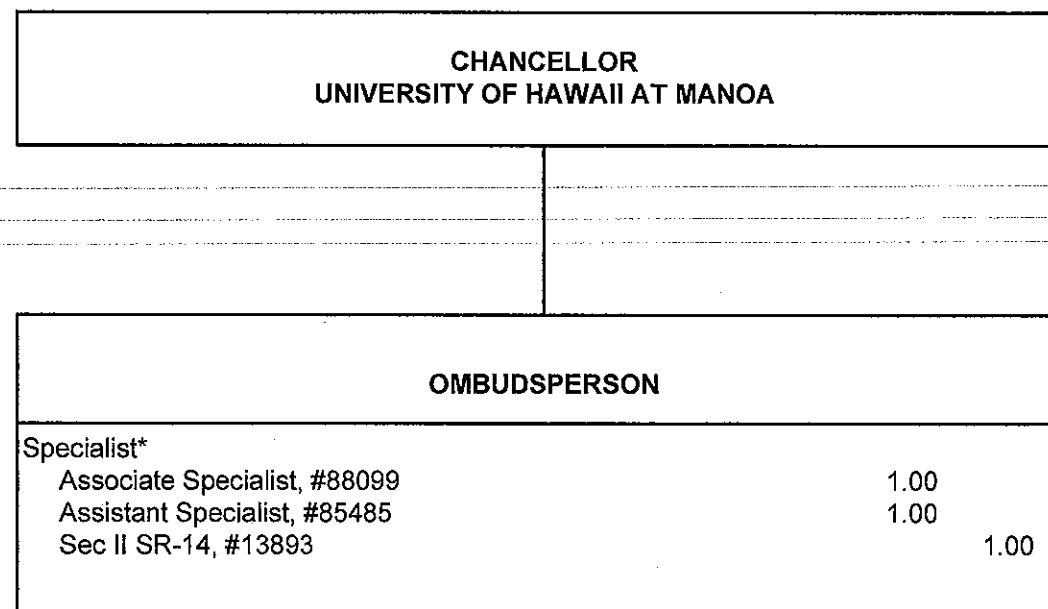


*new, position number to be determined

CHART UPDATED
DATE JUL - 1 2007

State of Hawaii
University of Hawaii
University of Hawaii at Manoa
OFFICE OF THE CHANCELLOR
ORGANIZATION CHART
CHART I-D

GENERAL FUND FTE: 3.00



*new, position number to be determined

CHART UPDATED
DATE JUL - 1 2007