

UNIVERSITY OF HAWAII  
UNIVERSITY OF HAWAII AT MANOA  
COLLEGE OF ARTS AND SCIENCES  
COLLEGE OF NATURAL SCIENCES

ORGANIZATION CHART  
CHART I

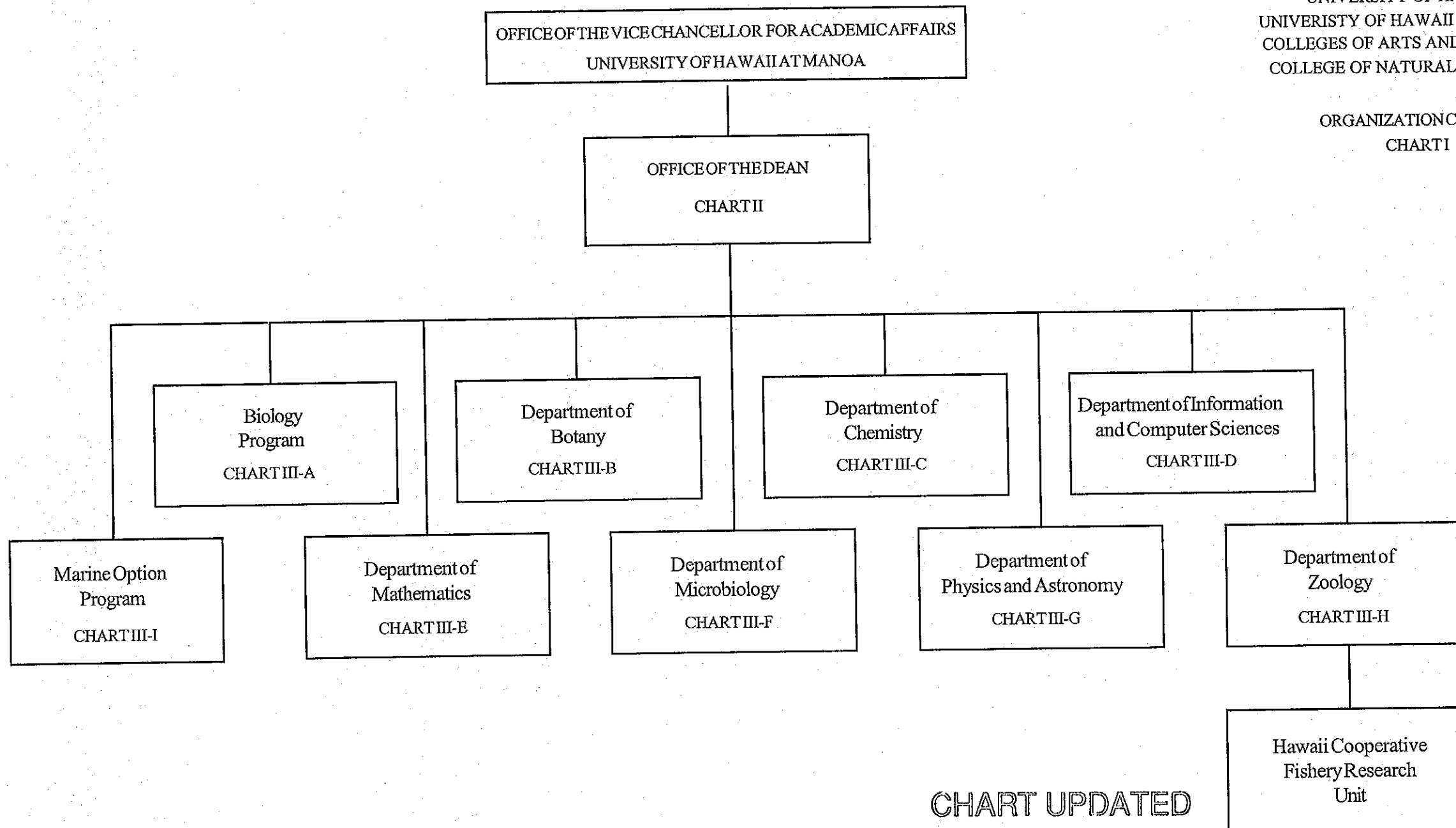


CHART UPDATED

DATE JUL - 1 2007

UNIVERSITY OF HAWAII  
UNIVERSITY OF HAWAII AT MANOA  
COLLEGES OF ARTS AND SCIENCES  
COLLEGE OF NATURAL SCIENCES  
OFFICE OF THE DEAN

POSITION ORGANIZATION CHART  
CHART II

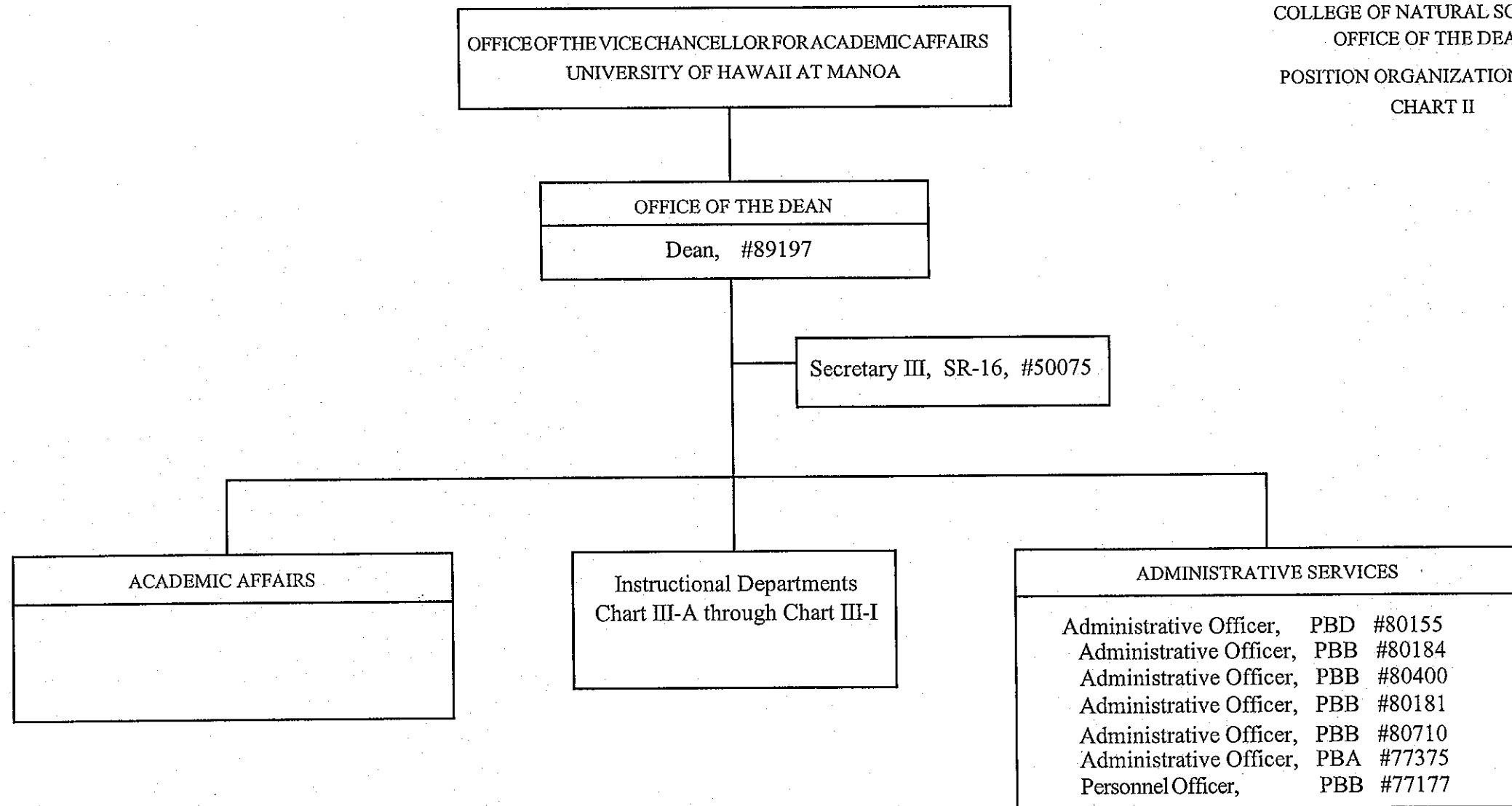


CHART UPDATED

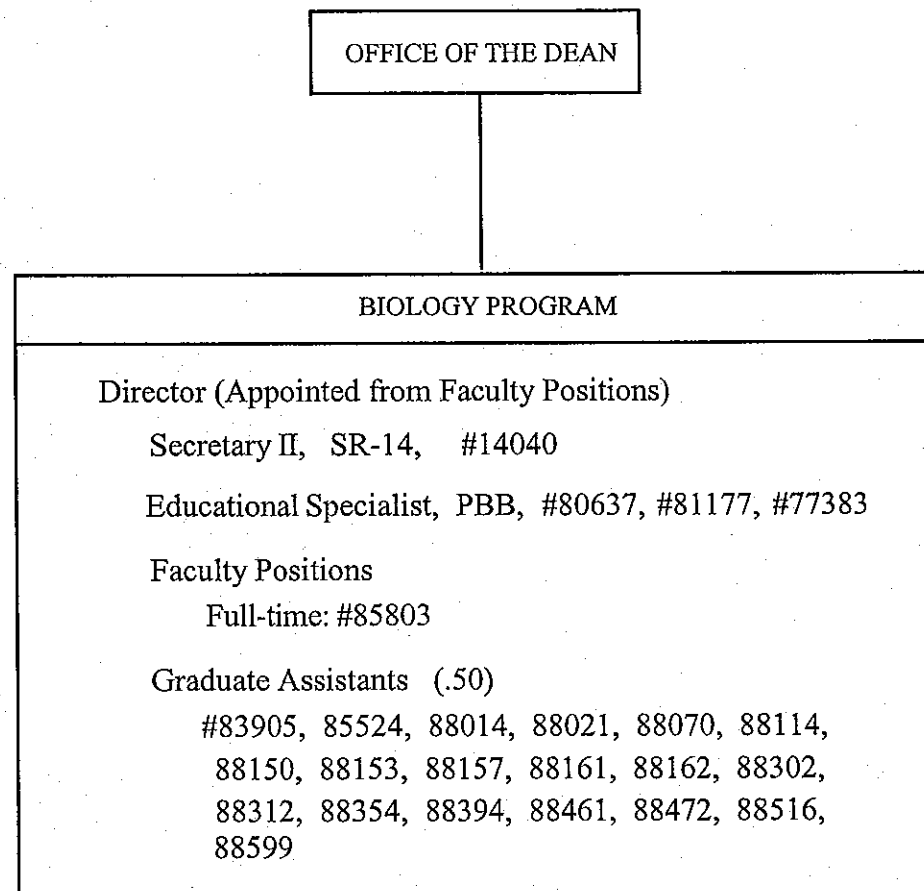
DATE JUL - 1 2007

General Funds 9.00

STATE OF HAWAII

UNIVERSITY OF HAWAII  
UNIVERSITY OF HAWAII AT MANOA  
COLLEGES OF ARTS AND SCIENCES  
COLLEGE OF NATURAL SCIENCES

BIOLOGY PROGRAM  
POSITION ORGANIZATION CHART  
CHART III-A

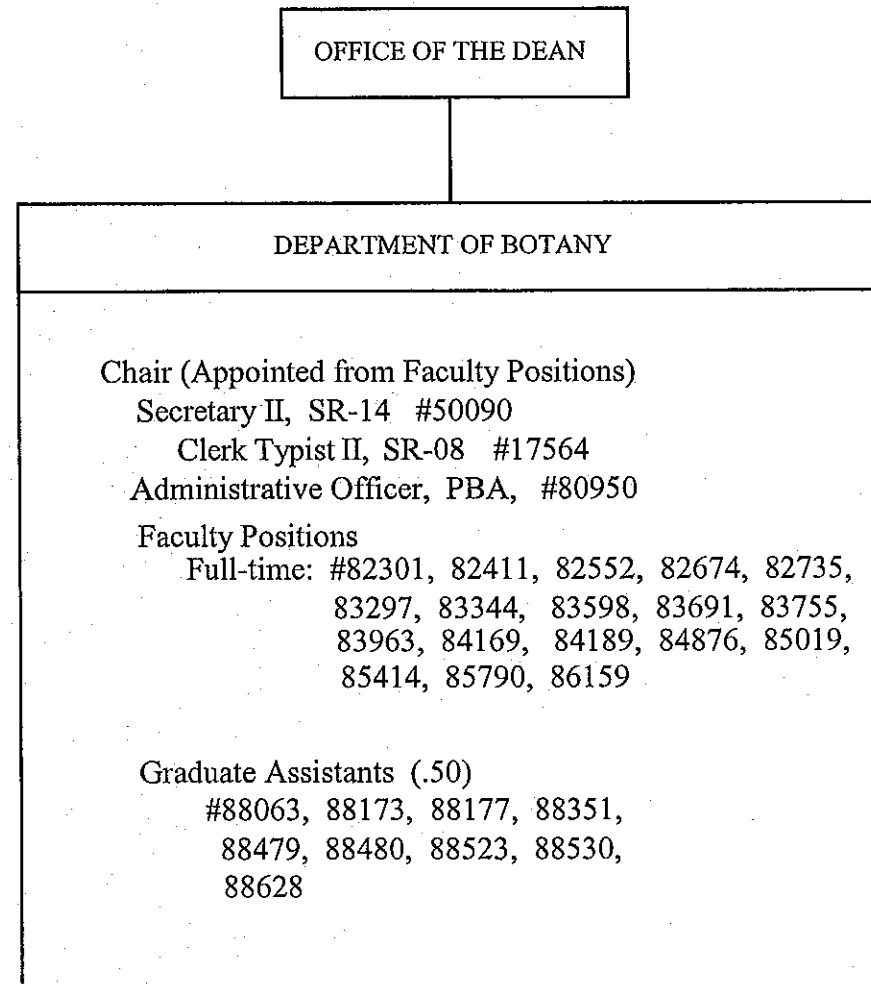


General Funds 14.50

CHART UPDATED

DATE JUL - 1 2007

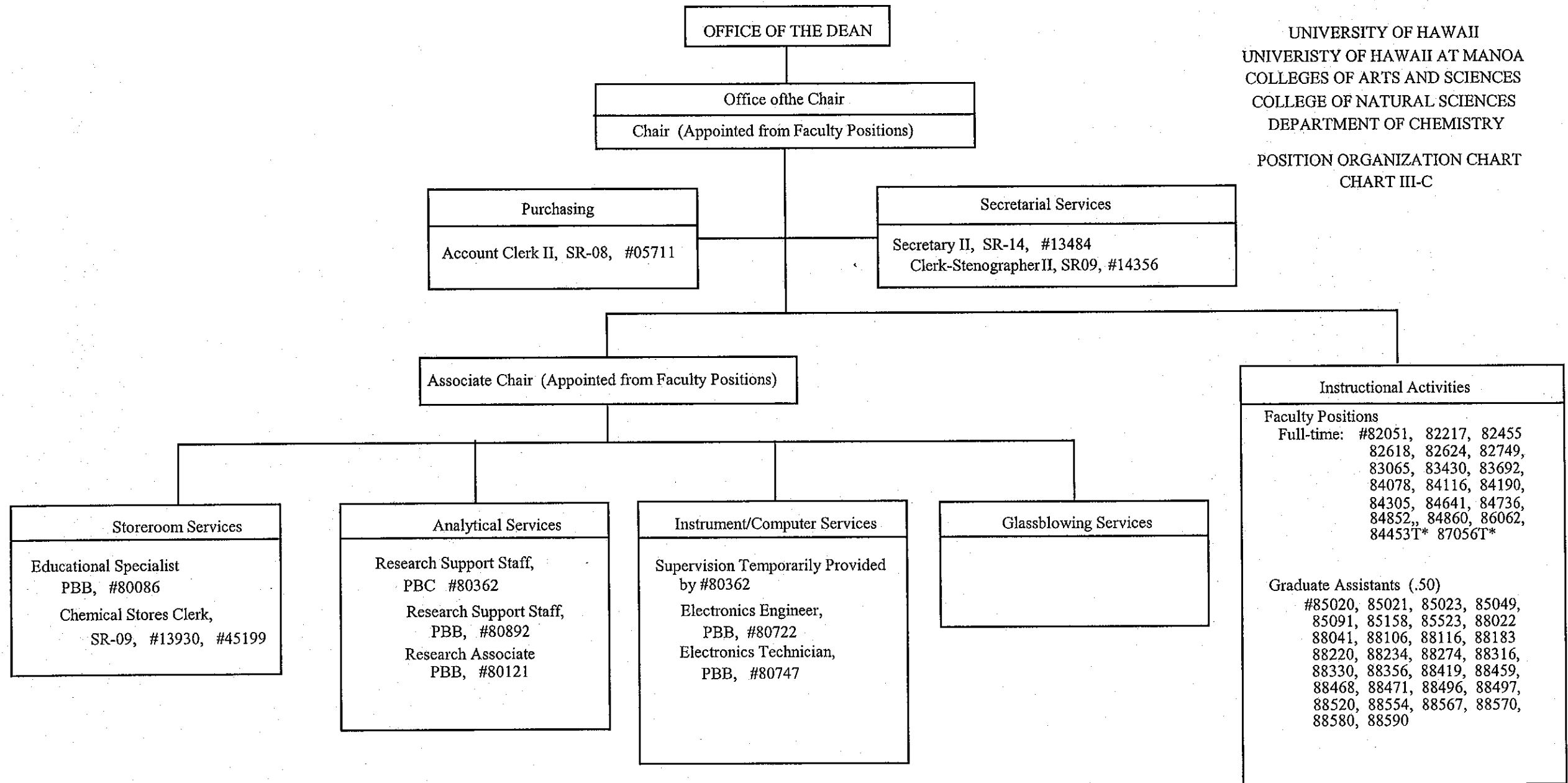
UNIVERSITY OF HAWAII  
UNIVERSITY OF HAWAII AT MANOA  
COLLEGES OF ARTS AND SCIENCES  
COLLEGE OF NATURAL SCIENCES  
DEPARTMENT OF BOTANY  
POSITION ORGANIZATION CHART  
CHART III-B



General Funds 25.50

UNIVERSITY OF HAWAII  
UNIVERSITY OF HAWAII AT MANOA  
COLLEGES OF ARTS AND SCIENCES  
COLLEGE OF NATURAL SCIENCES  
DEPARTMENT OF CHEMISTRY

POSITION ORGANIZATION CHART  
CHART III-C



\*Appropriated Temporary Positions  
\*\*Pending Establishment

CHART UPDATED General Funds 46.00  
DATE JUL - 1 2007

STATE OF HAWAII

UNIVERSITY OF HAWAII  
UNIVERSITY OF HAWAII AT MANOA  
COLLEGES OF ARTS AND SCIENCES  
COLLEGE OF NATURAL SCIENCES  
DEPARTMENT OF INFORMATION  
AND COMPUTER SCIENCES  
POSITION ORGANIZATION CHART  
CHART III-D

OFFICE OF THE DEAN

DEPARTMENT OF INFORMATION AND COMPUTER SCIENCES

Chair (Appointed from Faculty Positions)

Secretary II, SR-14, #18055

Clerk Typist III, SR-10, #26814

IT Specialist, PBA, #81194

IT Specialist, PBB #81447, 99526F\*

Adm & Fiscal Support Specialist, PBB, #81985

Faculty Positions

Full-time: #82070, 82120, 82287, 82446, 82468,  
82626, 82649, 82737, 82787, 82794,  
82835, 83074, 83083, 83203, 83381,  
83393, 83408, 83443, 83602, 83857,  
83889, 83916, 83999, 84029, 84270,  
84282, 84427, 87503, 87504, 88680

Part-time: #85651T\* (0.50)

Graduate Assistants (.50)

#85650, 86422, 86464, 86465, 86466, 86467, 87556,  
87557, 87558, 88563, 83828T\*, 83834T\*, 84341T\*,  
86064T\*

\*Appropriated Temporary Positions

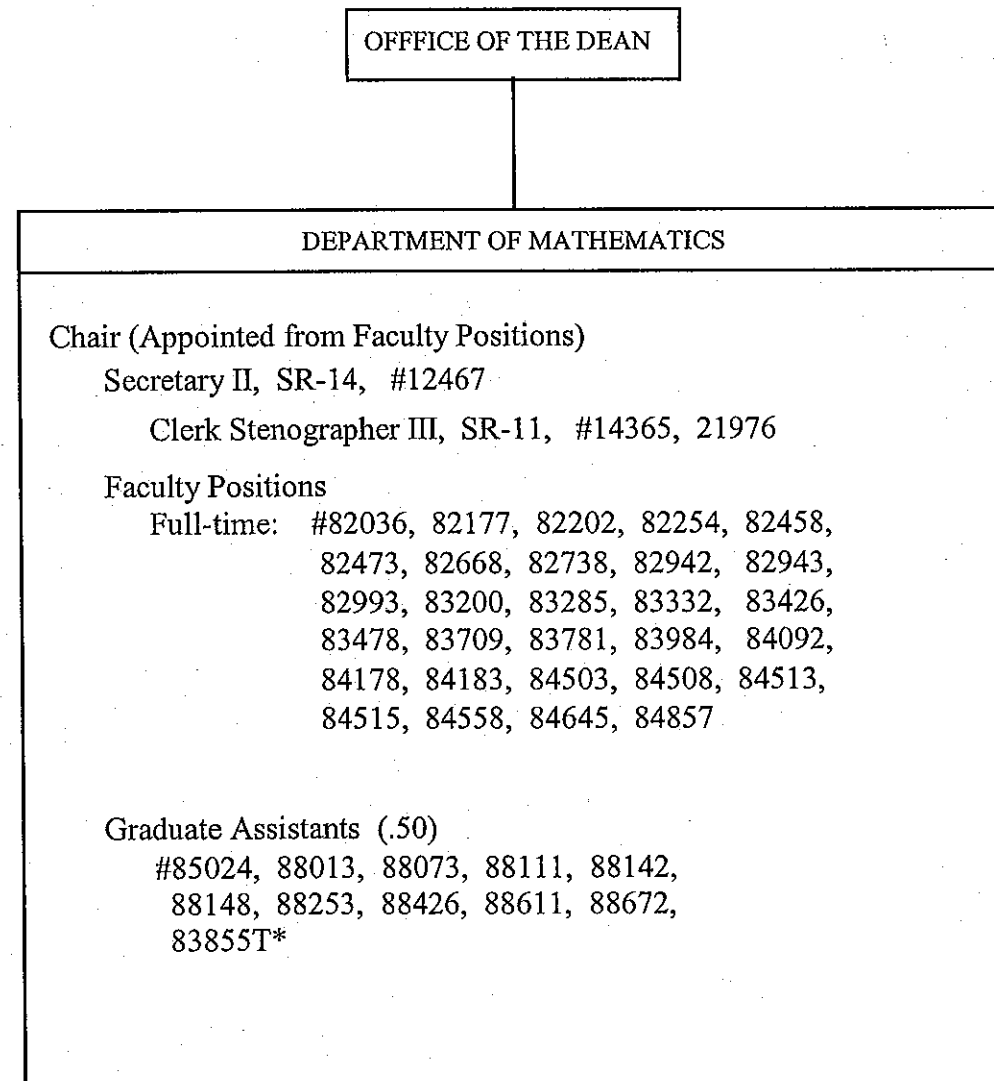
General Funds 43.50

CHART UPDATED

DATE JUL - 1 2007

UNIVERSITY OF HAWAII  
UNIVERSITY OF HAWAII AT MANOA  
COLLEGES OF ARTS AND SCIENCES  
COLLEGE OF NATURAL SCIENCES  
DEPARTMENT OF MATHEMATICS

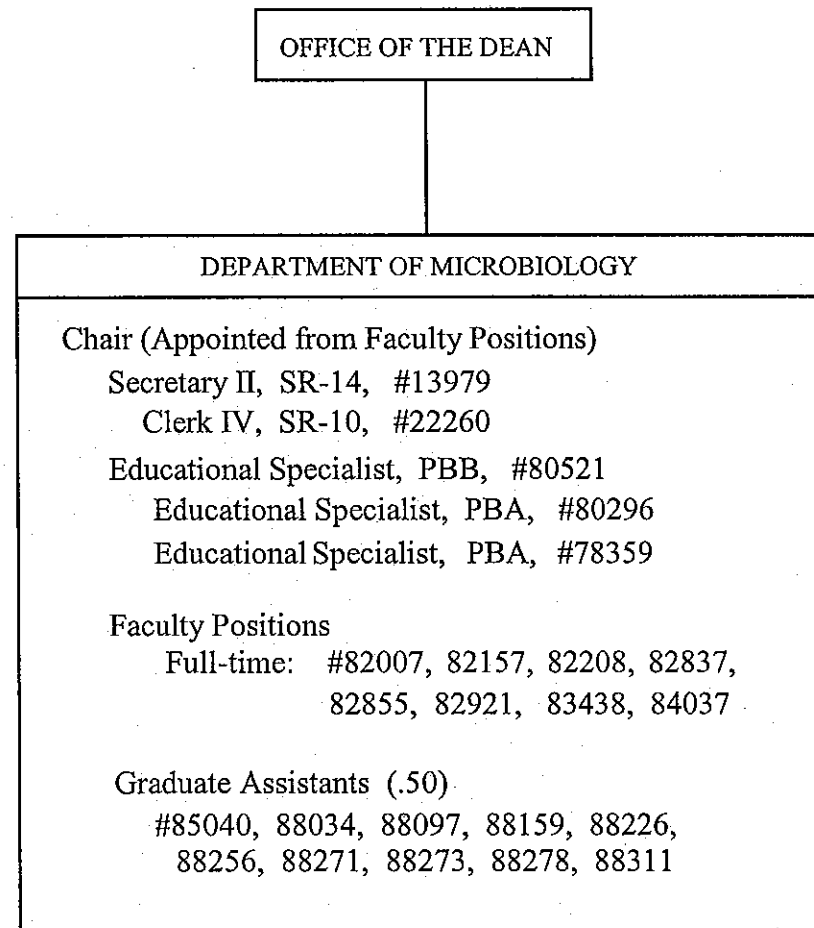
POSITION ORGANIZATION CHART  
CHART III-E



General Funds 37.50

\*Appropriated Temporary Positions  
\*\*Pending Establishment

UNIVERSITY OF HAWAII  
UNIVERSITY OF HAWAII AT MANOA  
COLLEGES OF ARTS AND SCIENCES  
COLLEGE OF NATURAL SCIENCES  
DEPARTMENT OF MICROBIOLOGY  
POSITION ORGANIZATION CHART  
CHART III-F



General Funds 18.00

CHART UPDATED

DATE JUL - 1 2007



STATE OF HAWAII

UNIVERSITY OF HAWAII  
UNIVERSITY OF HAWAII AT MANOA  
COLLEGES OF ARTS AND SCIENCES  
COLLEGE OF NATURAL SCIENCES

DEPARTMENT OF PHYSICS AND ASTRONOMY

POSITION ORGANIZATION CHART  
CHART III-G

OFFICE OF THE DEAN

DEPARTMENT OF PHYSICS AND ASTRONOMY

Chair (Appointed from Faculty Positions)

Secretary II, SR-14, #12918

Clerk-Stenographer II, SR-09, #14355

Scientific Instrument Technician, PBB, #80706

Scientific Instrument Technician, PBB, #80703

Faculty Positions

Full-time: #82206, 82314, 82633, 82770, 82875,  
83534, 83547, 83790, 83813, 83861,  
83910, 83915, 83926, 84235, 84240,  
84398, 84494, 84587, 84675, 84897,  
88615, 84773

Graduate Assistants (.50)

#85506, 88055, 88057, 88176, 88198, 88270, 88309,  
88385, 88389, 88441, 88478, 88524, 88593, 88650,  
83844T\*, 83849T\*, 84184T\*

General Funds 34.50

\*Appropriated Temporary Positions

CHART UPDATED

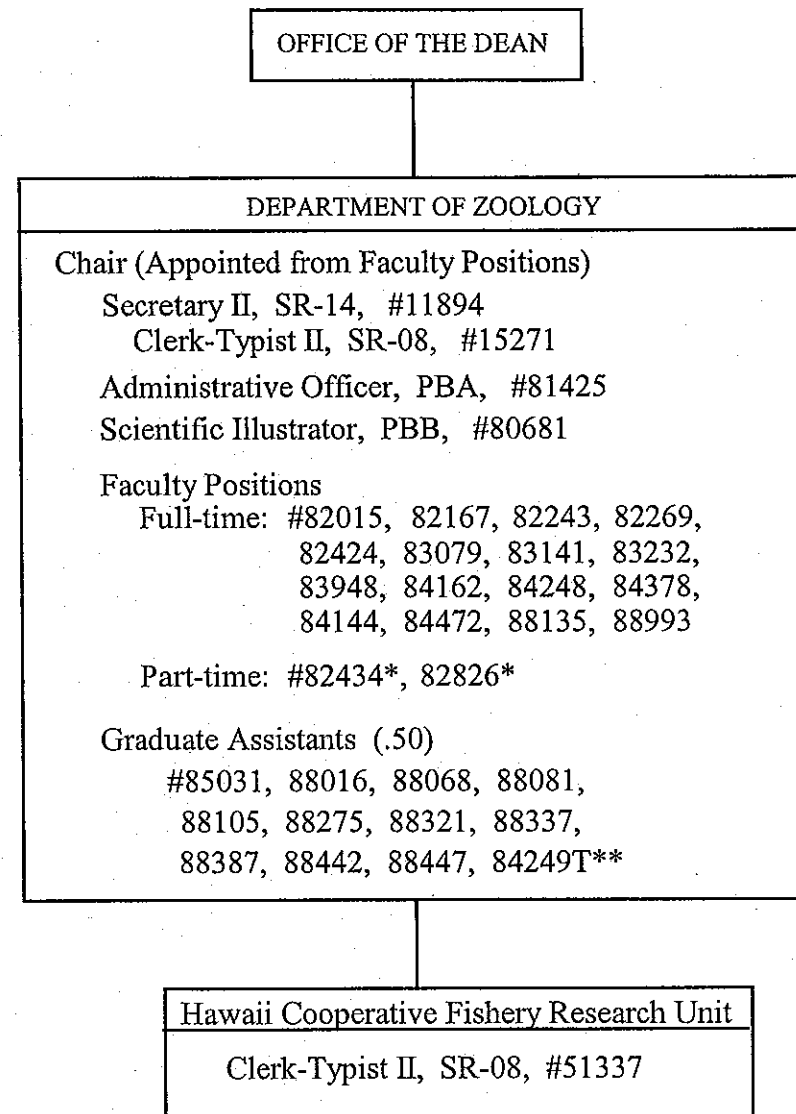
DATE JUL - 1 2007

STATE OF HAWAII

UNIVERSITY OF HAWAII  
UNIVERSITY OF HAWAII AT MANOA  
COLLEGES OF ARTS AND SCIENCES  
COLLEGE OF NATURAL SCIENCES

DEPARTMENT OF ZOOLOGY

POSITION ORGANIZATION CHART  
CHART III-H



\*Joint Appointments

\*\*Appropriated Temporary Positions

General Funds 28.00

CHART UPDATED

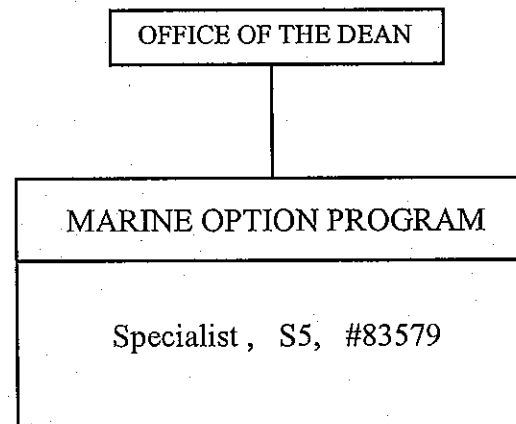
DATE III - 1 2007

STATE OF HAWAII

UNIVERSITY OF HAWAII  
UNIVERSITY OF HAWAII AT MANOA  
COLLEGES OF ARTS AND SCIENCES  
COLLEGE OF NATURAL SCIENCES

MARINE OPTION PROGRAM

POSITION ORGANIZATION CHART  
CHART III-I



General Funds 1.00

CHART UPDATED

DATE JUL - 1 2007