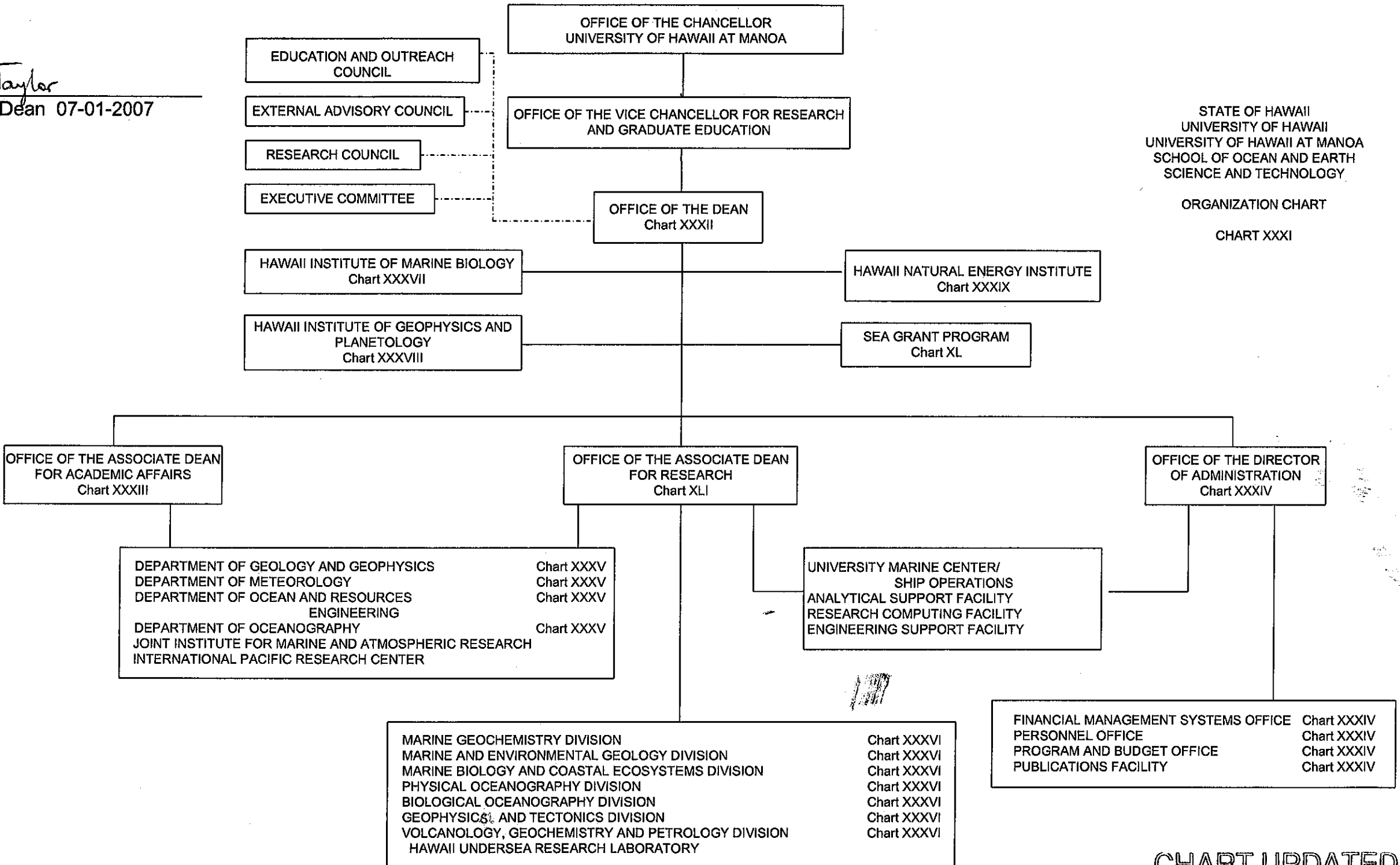


APPROVED:

Brian Taylor
Brian Taylor, Dean 07-01-2007



STATE OF HAWAII
UNIVERSITY OF HAWAII
UNIVERSITY OF HAWAII AT MANOA
SCHOOL OF OCEAN AND EARTH
SCIENCE AND TECHNOLOGY

ORGANIZATION CHART

CHART XXXI

CHART UPDATED
JUL - 1 2007
DATE _____

APPROVED:

Brian Taylor

Brian Taylor, Dean 07-01-2006

STATE OF HAWAII
UNIVERSITY OF HAWAII
UNIVERSITY OF HAWAII AT MANOA
SCHOOL OF OCEAN AND EARTH
SCIENCE AND TECHNOLOGY

OFFICE OF THE DEAN
POSITION ORGANIZATION CHART

CHART XXXII

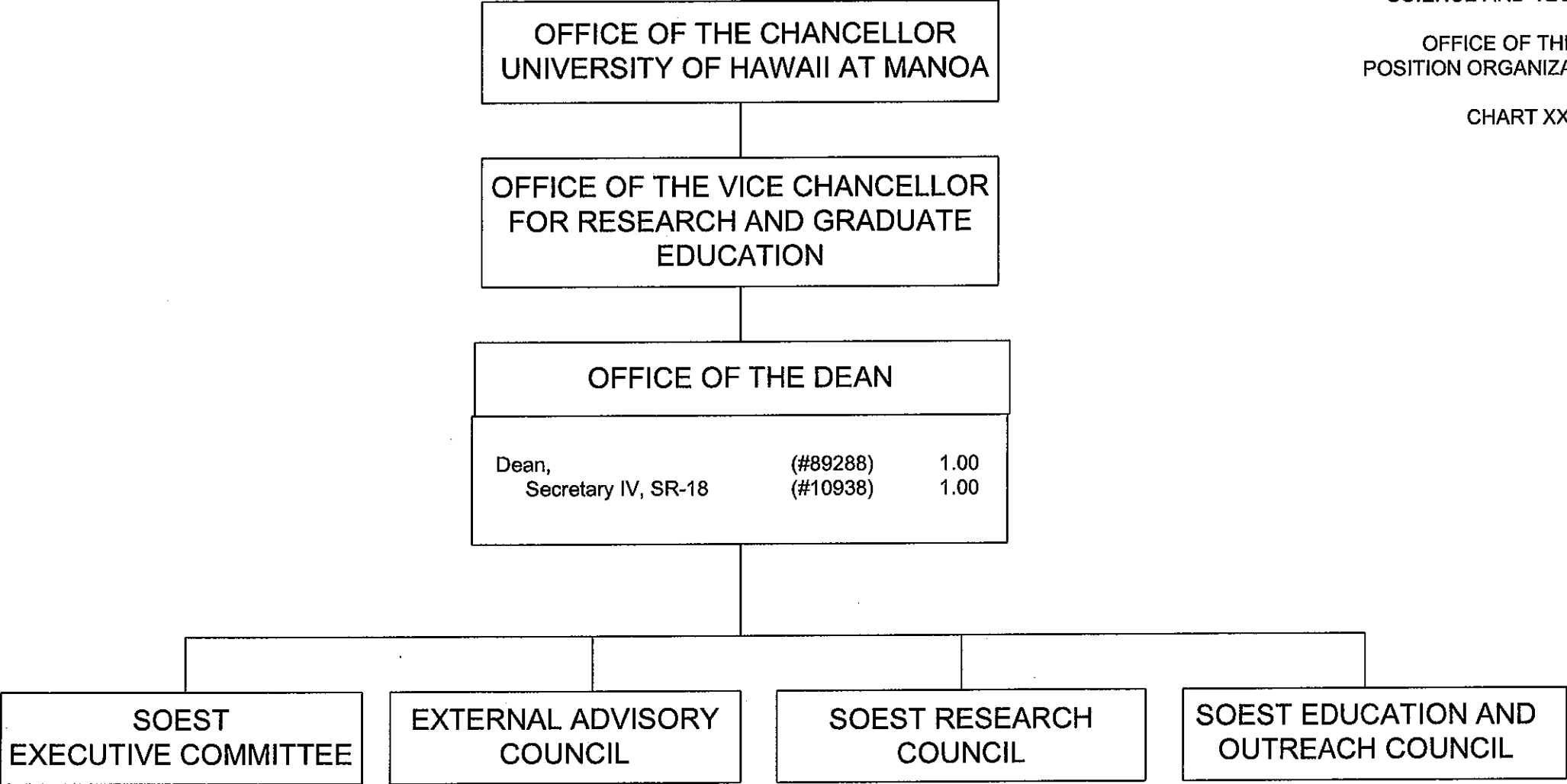
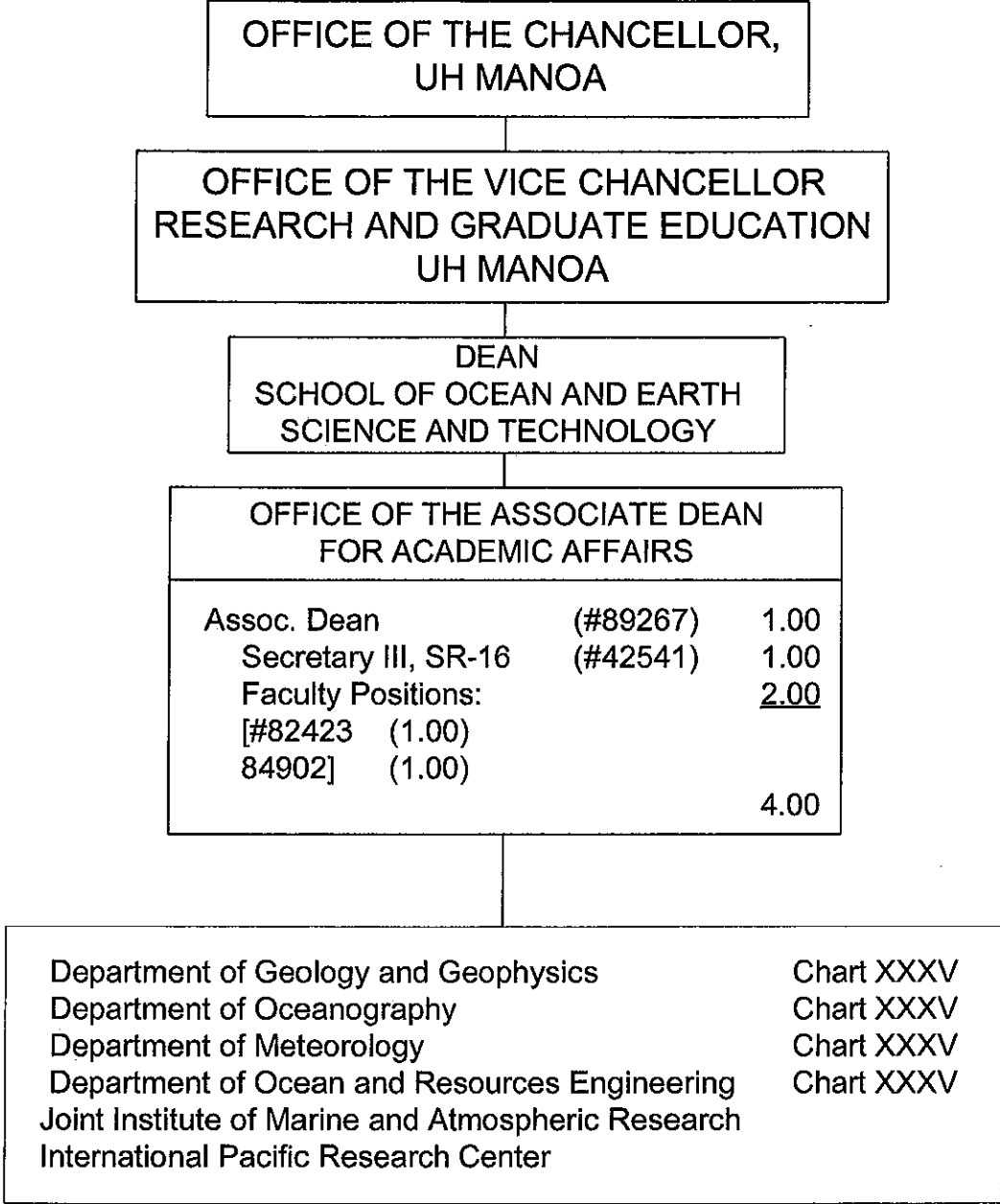


CHART UPDATED

DATE JUL - 1 2007

APPROVED:
Brian Taylor
Brian Taylor, Dean 07-01-2007



STATE OF HAWAII
UNIVERSITY OF HAWAII
UNIVERSITY OF HAWAII AT MANOA
SCHOOL OF OCEAN AND EARTH
SCIENCE AND TECHNOLOGY

OFFICE OF THE ASSOCIATE DEAN
FOR ACADEMIC AFFAIRS
POSITION ORGANIZATION CHART

CHART XXXIII

Pending Establishment
Psuedo (tbe) Asst Spec (Acad Advisor) (1.00)

CHART UPDATED
DATE JUL - 1 2007

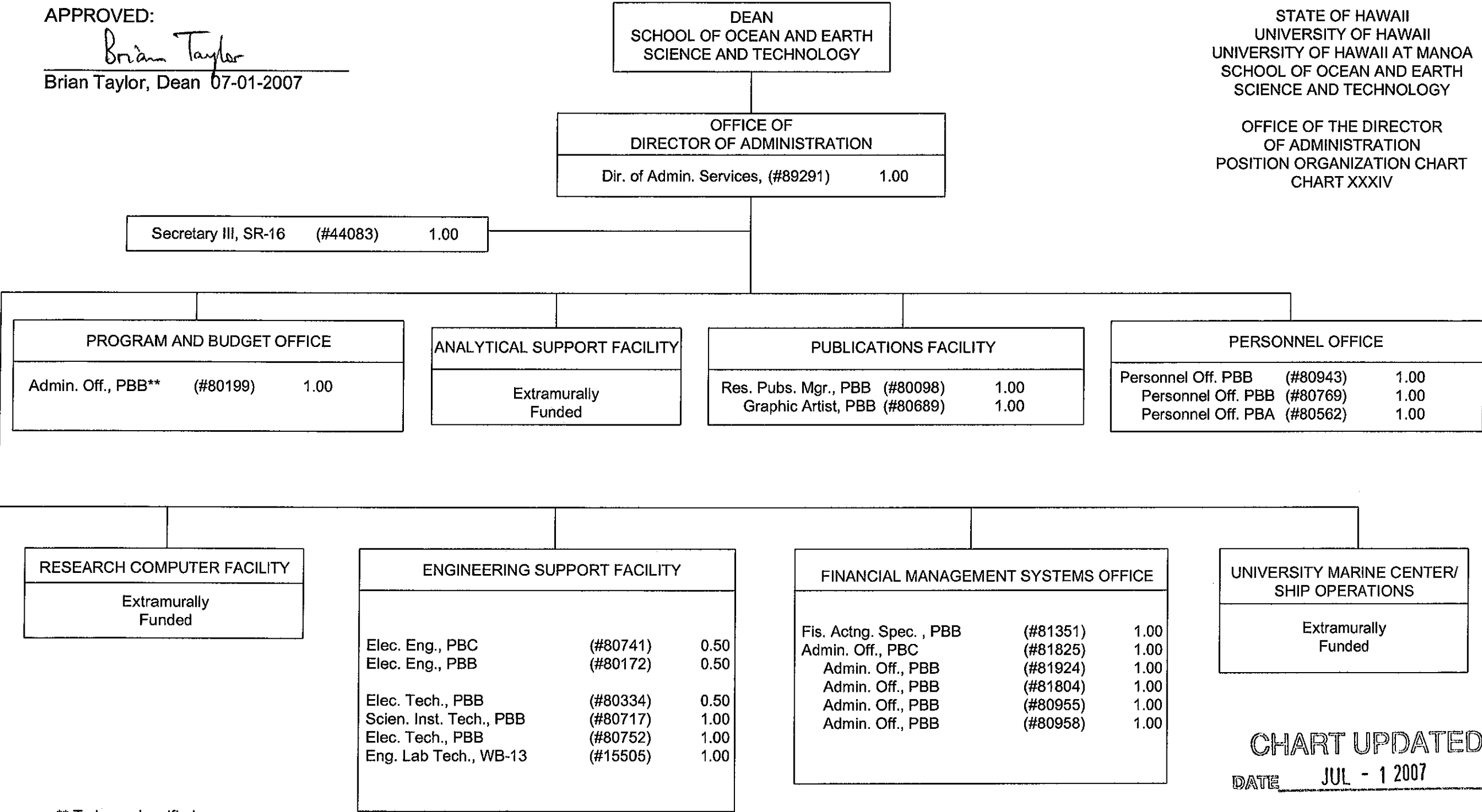
General Funds 5.00

APPROVED:

Brian Taylor
Brian Taylor, Dean 07-01-2007

STATE OF HAWAII
UNIVERSITY OF HAWAII
UNIVERSITY OF HAWAII AT MANOA
SCHOOL OF OCEAN AND EARTH
SCIENCE AND TECHNOLOGY

OFFICE OF THE DIRECTOR
OF ADMINISTRATION
POSITION ORGANIZATION CHART
CHART XXXIV



** To be reclassified

CHART UPDATED
DATE JUL - 1 2007

General Funds 18.50

APPROVED:
Brian Taylor
Brian Taylor, Dean 07-01-2007

STATE OF HAWAII
UNIVERSITY OF HAWAII
UNIVERSITY OF HAWAII AT MANOA
SCHOOL OF OCEAN AND EARTH
SCIENCE AND TECHNOLOGY

DEPARTMENTS
POSITION ORGANIZATION CHART
CHART XXXV

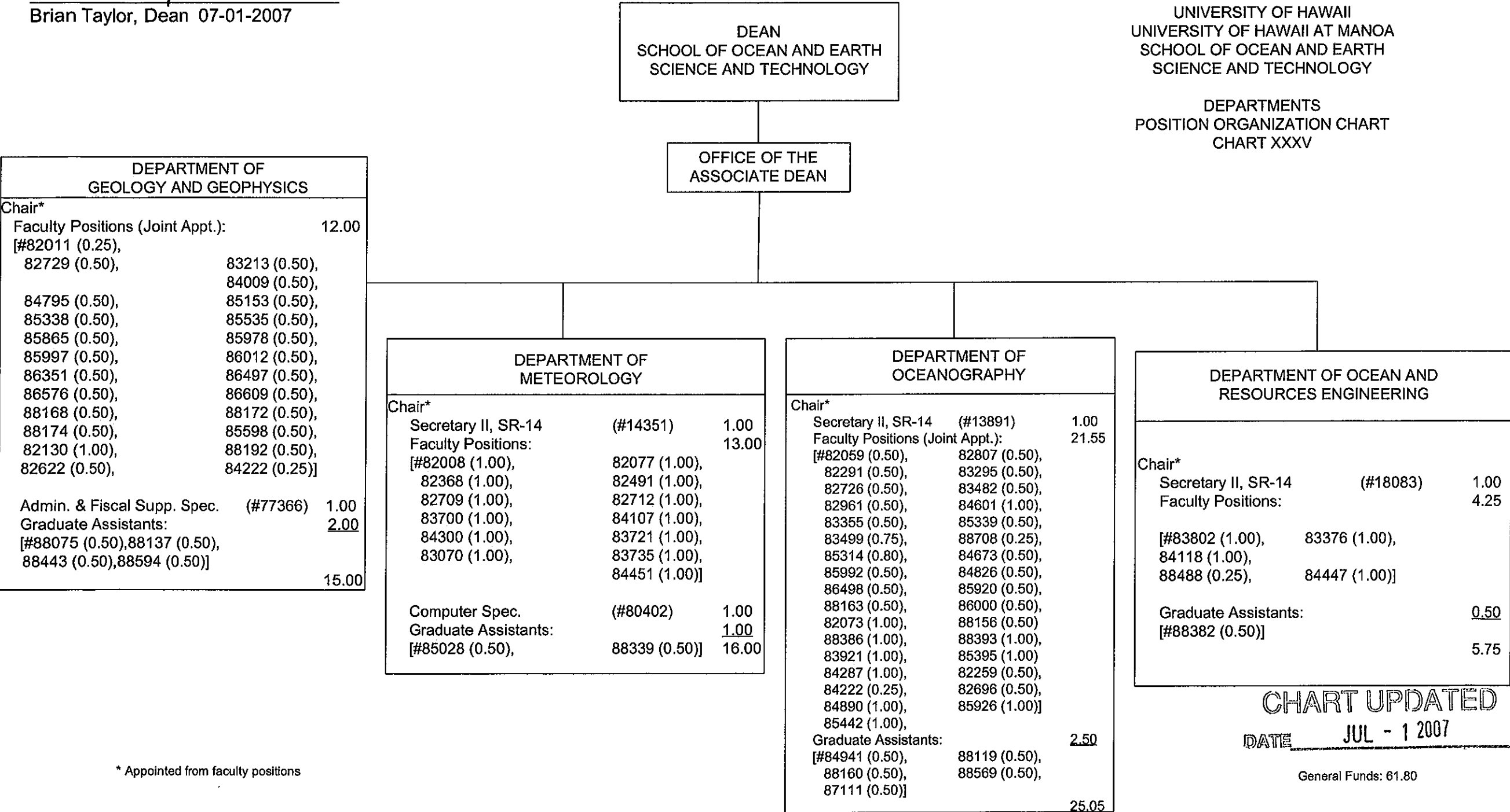


CHART UPDATED
DATE JUL - 1 2007

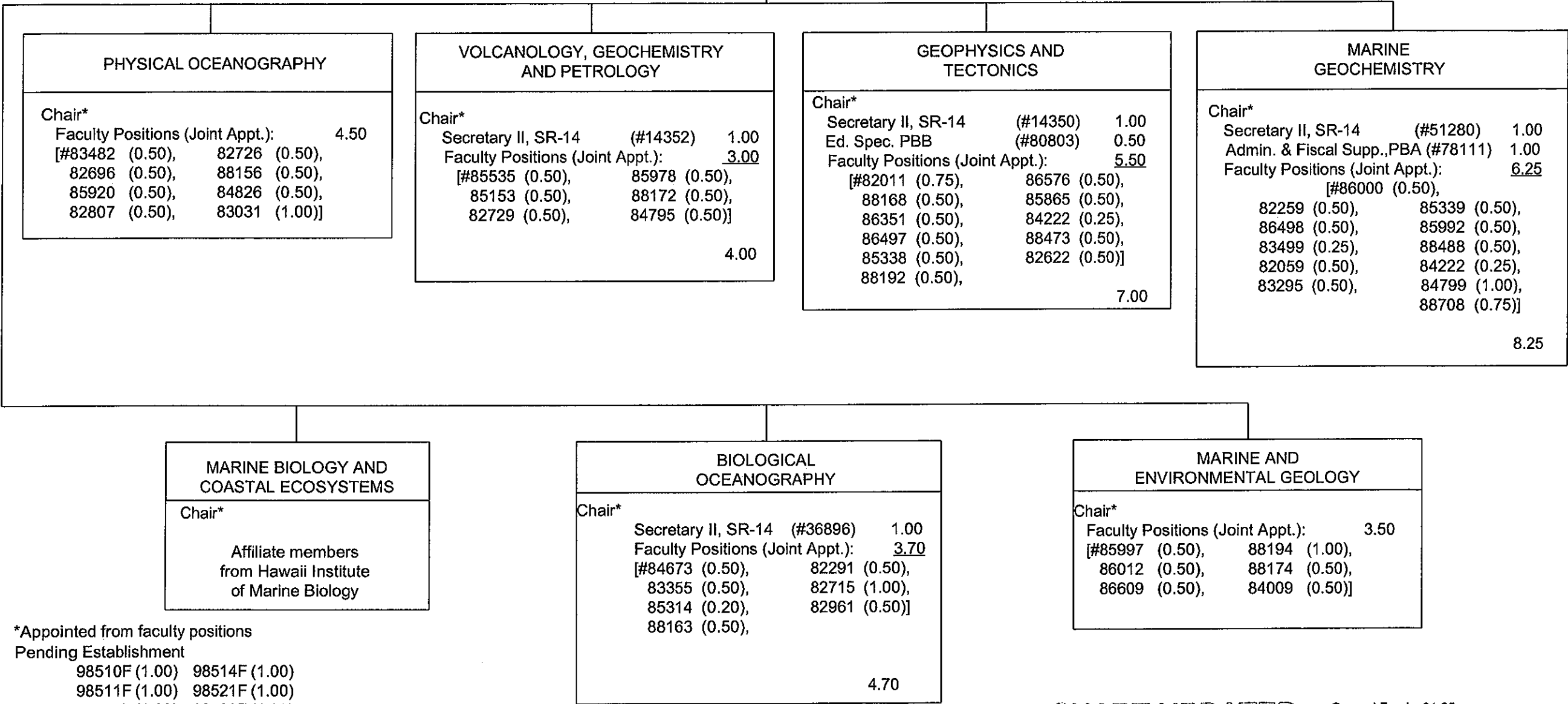
* Appointed from faculty positions

APPROVED:
Brian Taylor
Brian Taylor, Dean 07-01-2007

DEAN
SCHOOL OF OCEAN AND EARTH
SCIENCE AND TECHNOLOGY

ASSOCIATE DEAN FOR RESEARCH

STATE OF HAWAII
UNIVERSITY OF HAWAII
UNIVERSITY OF HAWAII AT MANOA
SCHOOL OF OCEAN AND EARTH
SCIENCE AND TECHNOLOGY
RESEARCH DIVISIONS
POSITION ORGANIZATION CHART
CHART XXXVI



*Appointed from faculty positions
Pending Establishment
98510F (1.00) 98514F (1.00)
98511F (1.00) 98521F (1.00)
98513F (1.00) 98522F (1.00)

CHART UPDATED
JUL - 1 2007
DATE _____

General Funds: 31.95

STATE OF HAWAII
UNIVERSITY OF HAWAII
UNIVERSITY OF HAWAII AT MANOA
SCHOOL OF OCEAN AND EARTH
SCIENCE AND TECHNOLOGY

HAWAII INSTITUTE OF MARINE BIOLOGY
POSITION ORGANIZATION CHART

CHART XXXVII

DEAN
SCHOOL OF OCEAN AND EARTH
SCIENCE AND TECHNOLOGY

OFFICE OF THE DIRECTOR
HAWAII INSTITUTE OF MARINE BIOLOGY
Chart XXXVIIA

ADMINISTRATIVE AND
FACILITIES SUPPORT
Chart XXXVIIA

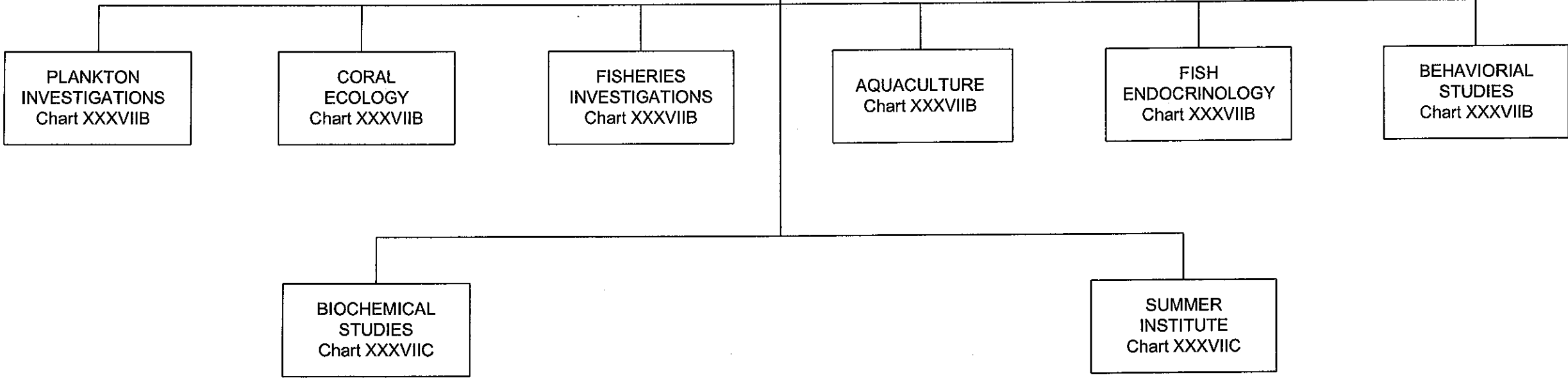


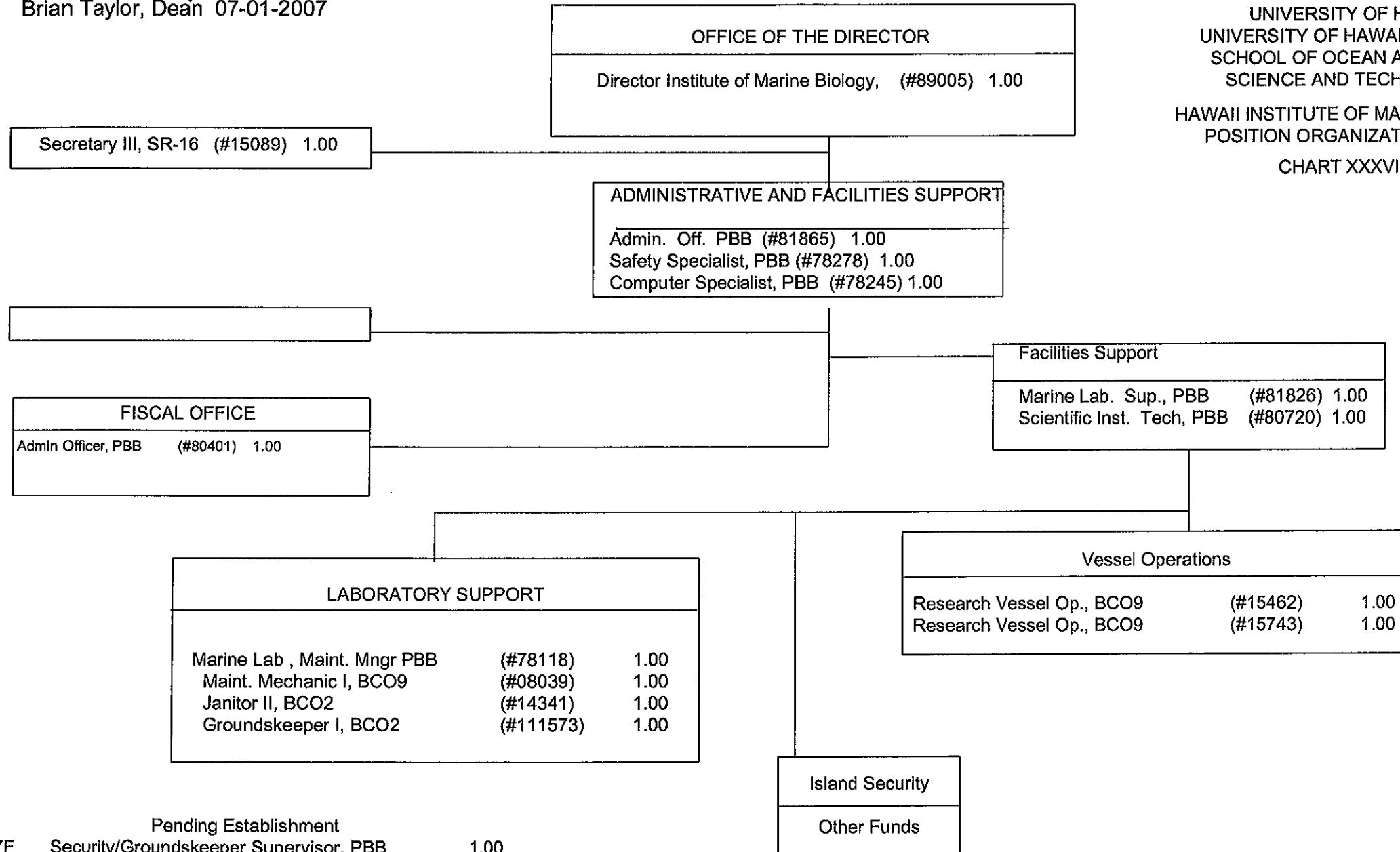
CHART UPDATED
JUL - 1 2007
DATE _____

APPROVED:

Brian Taylor

Brian Taylor, Dean 07-01-2007

STATE OF HAWAII
UNIVERSITY OF HAWAII
UNIVERSITY OF HAWAII AT MANOA
SCHOOL OF OCEAN AND EARTH
SCIENCE AND TECHNOLOGY
HAWAII INSTITUTE OF MARINE BIOLOGY
POSITION ORGANIZATION CHART
CHART XXXVIIA



Pending Establishment
98597F Security/Groundskeeper Supervisor, PBB 1.00
98598F Admin Officer, PBB 1.00
98599F Marine Lab Electrician, PBB 1.00

General Funds 17.00

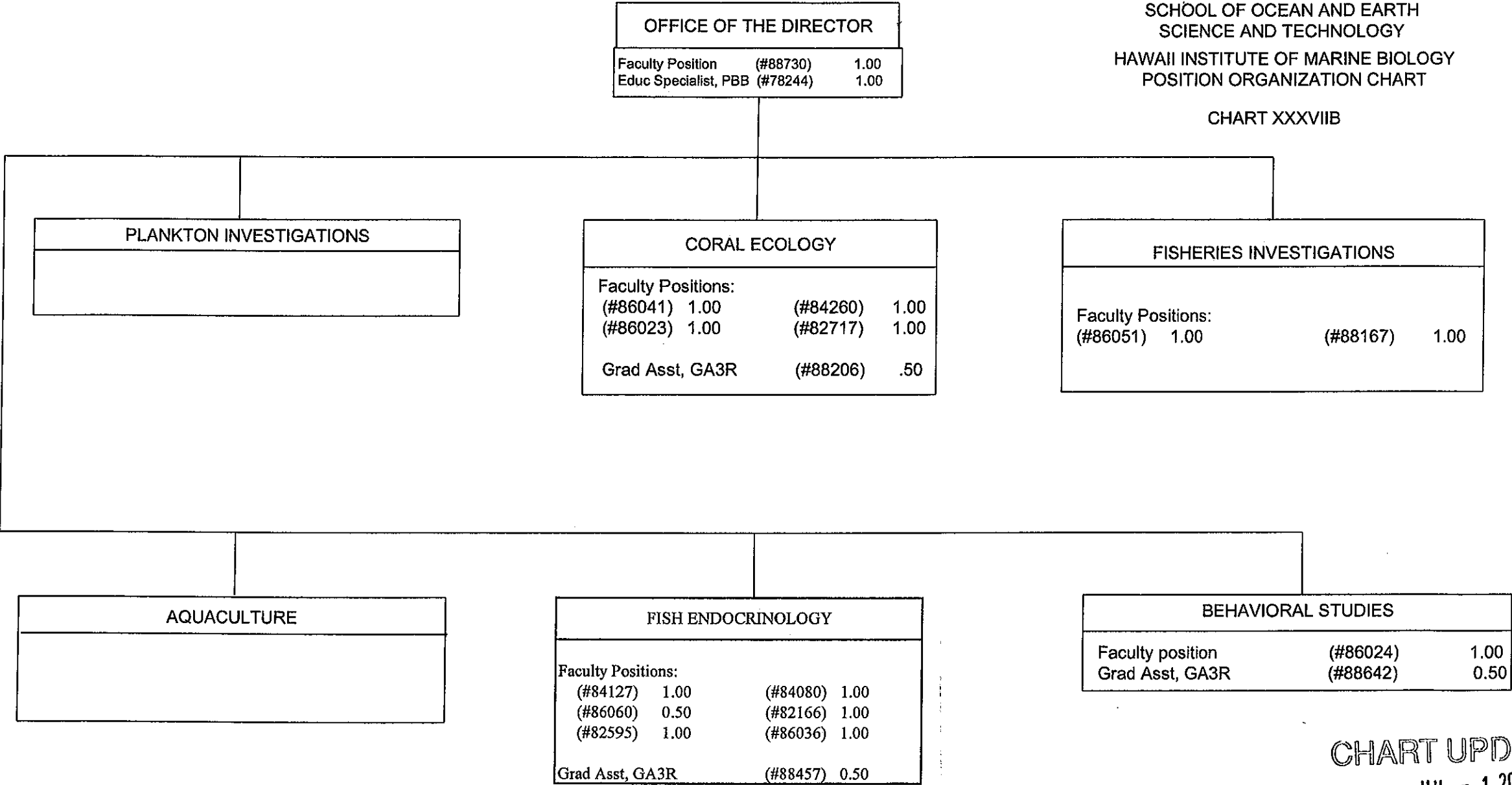
CHART UPDATED
DATE JUL - 1 2007

APPROVED:

Brian Taylor
Brian Taylor, Dean 07-01-2007

STATE OF HAWAII
UNIVERSITY OF HAWAII
UNIVERSITY OF HAWAII AT MANOA
SCHOOL OF OCEAN AND EARTH
SCIENCE AND TECHNOLOGY
HAWAII INSTITUTE OF MARINE BIOLOGY
POSITION ORGANIZATION CHART

CHART XXXVIIB



** Should be Chart XXXVIIA
(reorg required)

CHART UPDATED
DATE JUL - 1 2007

STATE OF HAWAII
UNIVERSITY OF HAWAII
UNIVERSITY OF HAWAII AT MANOA
SCHOOL OF OCEAN AND EARTH
SCIENCE AND TECHNOLOGY

HAWAII INSTITUTE OF MARINE BIOLOGY
POSITION ORGANIZATION CHART

CHART XXXVIIC

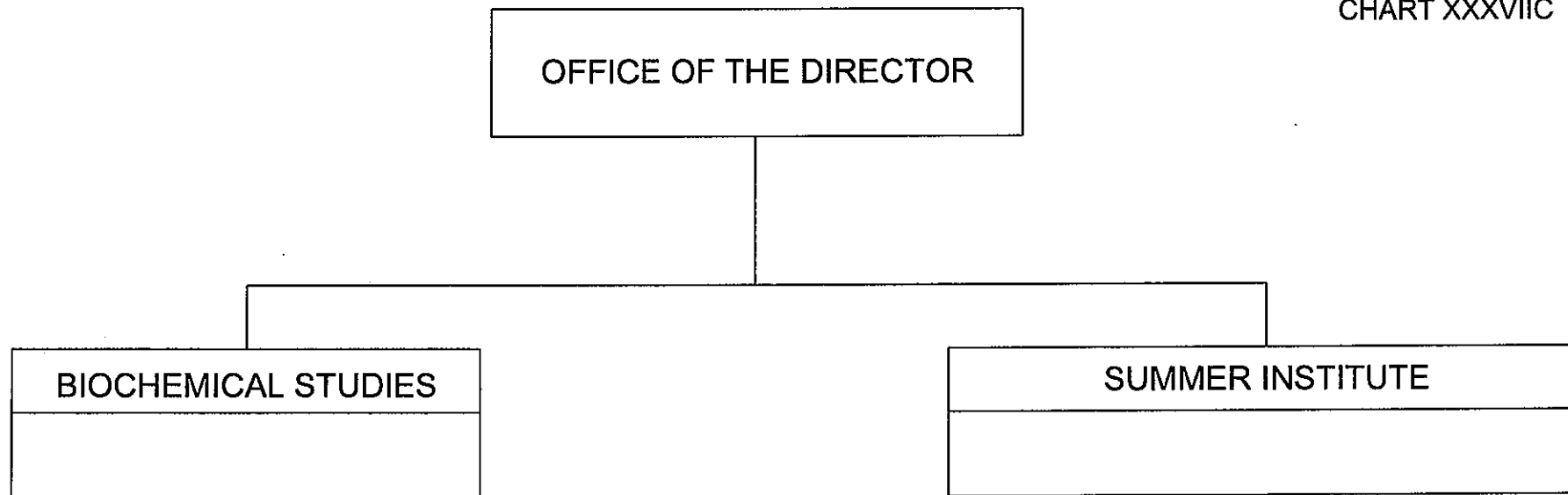


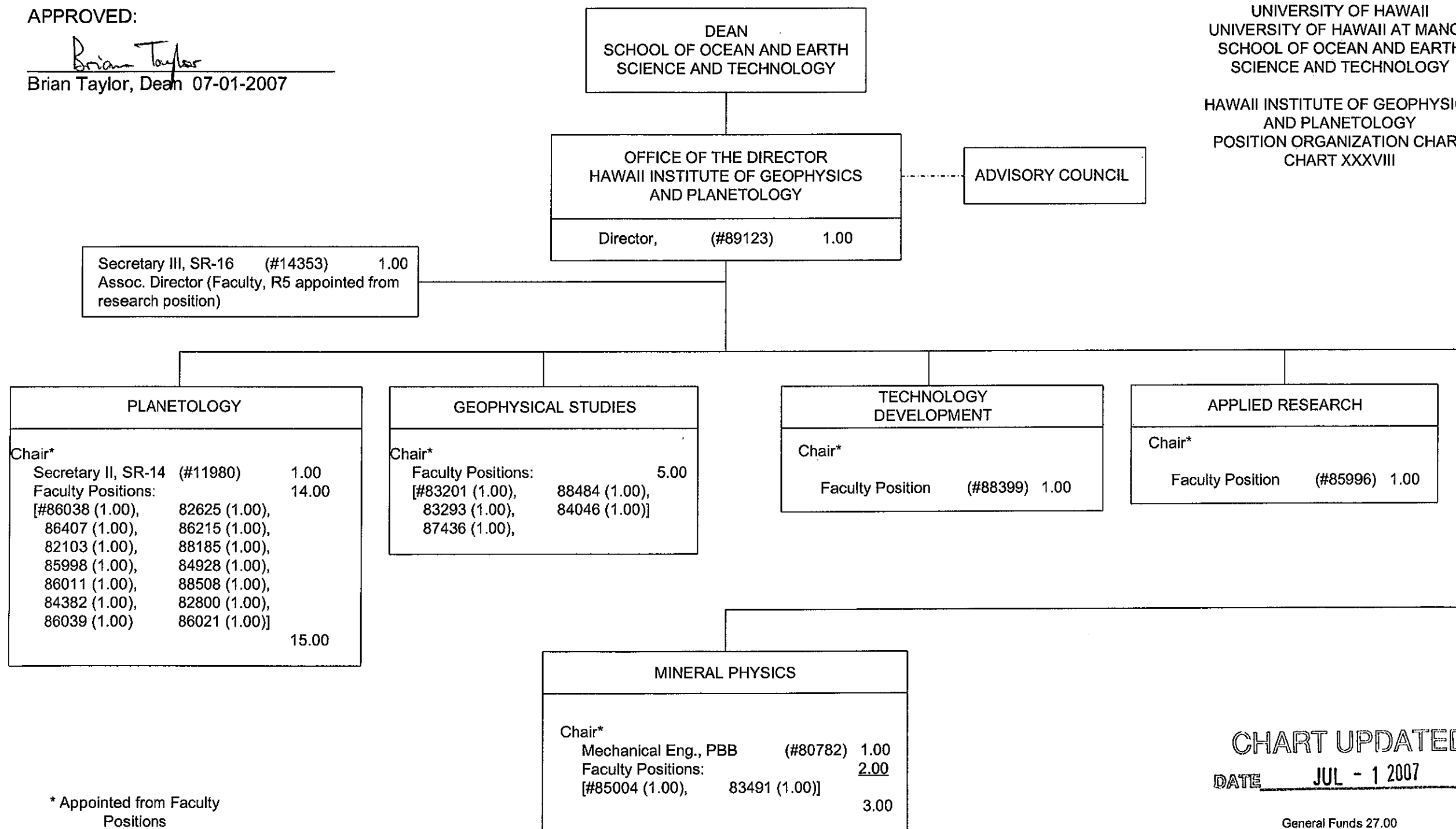
CHART UPDATED
DATE JUL - 1 2007

APPROVED:

Brian Taylor
Brian Taylor, Dean 07-01-2007

STATE OF HAWAII
UNIVERSITY OF HAWAII
UNIVERSITY OF HAWAII AT MANOA
SCHOOL OF OCEAN AND EARTH
SCIENCE AND TECHNOLOGY

HAWAII INSTITUTE OF GEOPHYSICS
AND PLANETOLOGY
POSITION ORGANIZATION CHART
CHART XXXVIII



* Appointed from Faculty
Positions

CHART UPDATED
DATE JUL - 1 2007

General Funds 27.00

STATE OF HAWAII
UNIVERSITY OF HAWAII
UNIVERSITY OF HAWAII AT MANOA
SCHOOL OF OCEAN AND EARTH SCIENCE AND TECHNOLOGY
HAWAII NATURAL ENERGY INSTITUTE
POSTIION ORGANIZATION CHART
CHART XXXIX

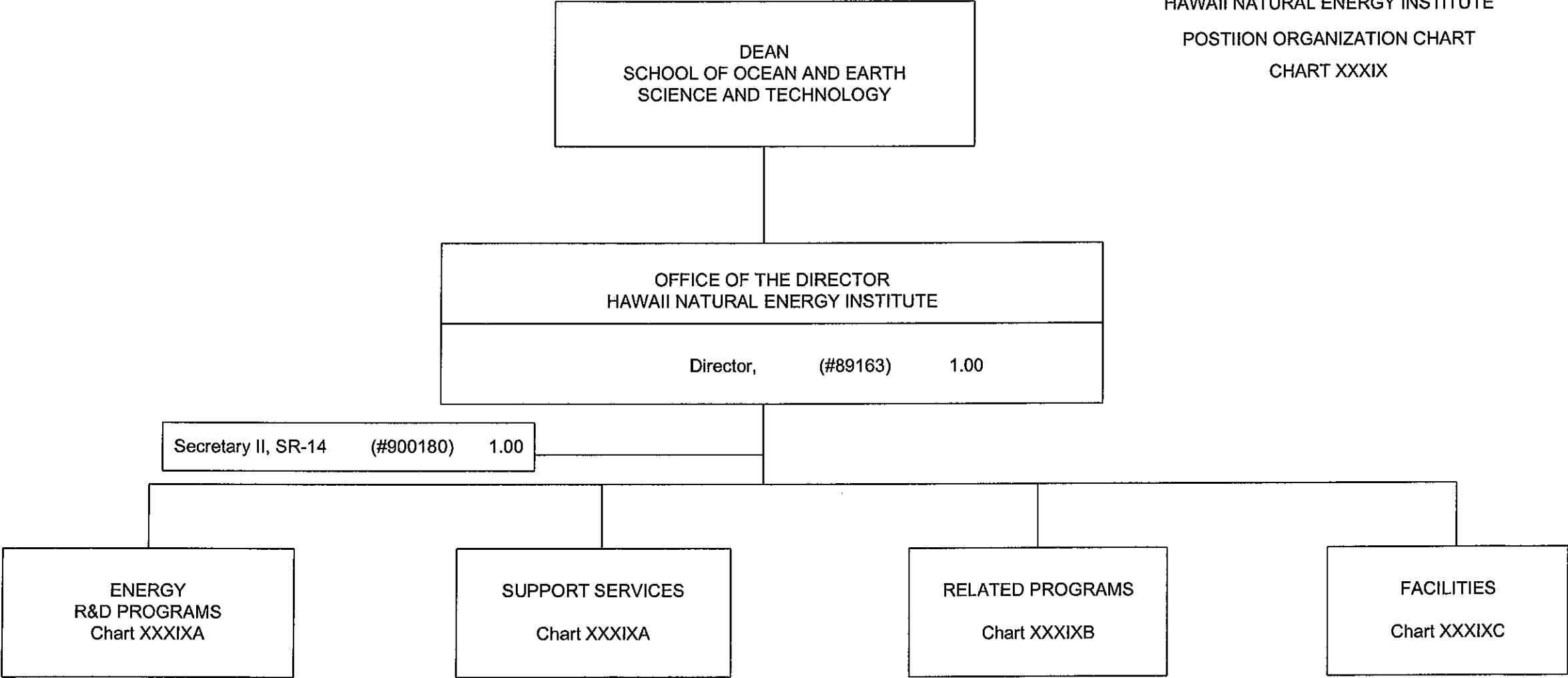


CHART UPDATED

DATE JUL - 1 2007

General Funds 2.00

APPROVED:

Brian Taylor
Brian Taylor, Dean 07-01-2007

STATE OF HAWAII
UNIVERSITY OF HAWAII
UNIVERSITY OF HAWAII AT MANOA
SCHOOL OF OCEAN AND EARTH SCIENCE AND TECHNOLOGY
HAWAII NATURAL ENERGY INSTITUTE

POSITION ORGANIZATION CHART

CHART XXXIXA

OFFICE OF THE DIRECTOR

SUPPORT SERVICES

ENERGY R&D PROGRAMS

Faculty positions:

(#87392)	1.00	(#87437)	1.00
(#86663)	1.00	(#87682)	1.00
(#83214)	1.00	(#83875)	1.00
(#82736)	1.00	(#84052)	1.00

FINANCIAL MANAGEMENT

Administrative Officer, PBB (#80002) 1.00
Administrative Officer, PBB (#80376) 1.00

PERSONNEL/PROG. DVLPMT.

Educational Specialist, PBB
(#80010) 1.00

General Funds 11.00

CHART UPDATED
DATE JUL - 1 2007

APPROVED:

Brian Taylor
Brian Taylor, Dean 07-01-2007

STATE OF HAWAII
UNIVERSITY OF HAWAII
UNIVERSITY OF HAWAII AT MANOA
SCHOOL OF OCEAN AND EARTH SCIENCE AND TECHNOLOGY
HAWAII NATURAL ENERGY INSTITUTE

POSITION ORGANIZATION CHART

CHART XXXIXB

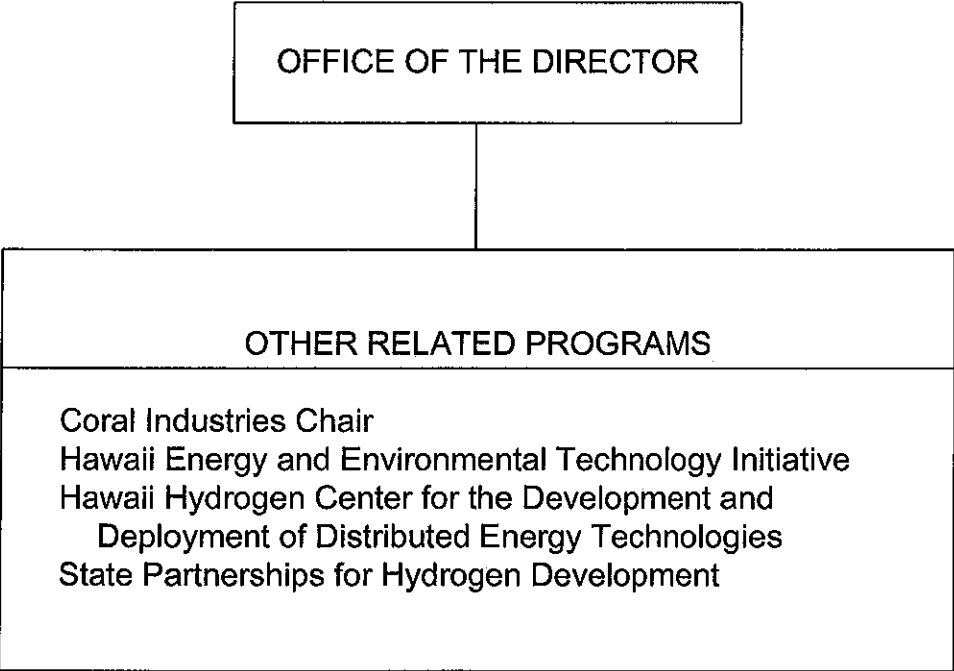


CHART UPDATED
DATE JUL - 1 2007

APPROVED:

Brian Taylor
Brian Taylor, Dean 07-01-2007

STATE OF HAWAII
UNIVERSITY OF HAWAII
UNIVERSITY OF HAWAII AT MANOA
SCHOOL OF OCEAN AND EARTH SCIENCE AND TECHNOLOGY
HAWAII NATURAL ENERGY INSTITUTE

POSITION ORGANIZATION CHART

CHART XXXIXC

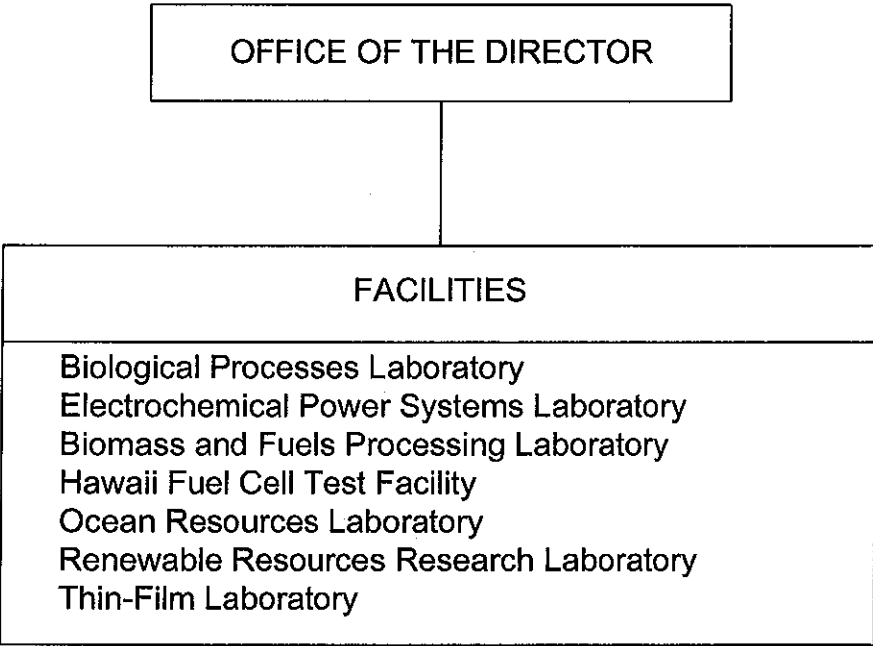


CHART UPDATED
DATE JUL - 1 2007

STATE OF HAWAII
UNIVERSITY OF HAWAII
UNIVERSITY OF HAWAII AT MANOA
SCHOOL OF OCEAN AND EARTH
SCIENCE AND TECHNOLOGY

SEA GRANT COLLEGE PROGRAM
ORGANIZATION CHART

CHART XL

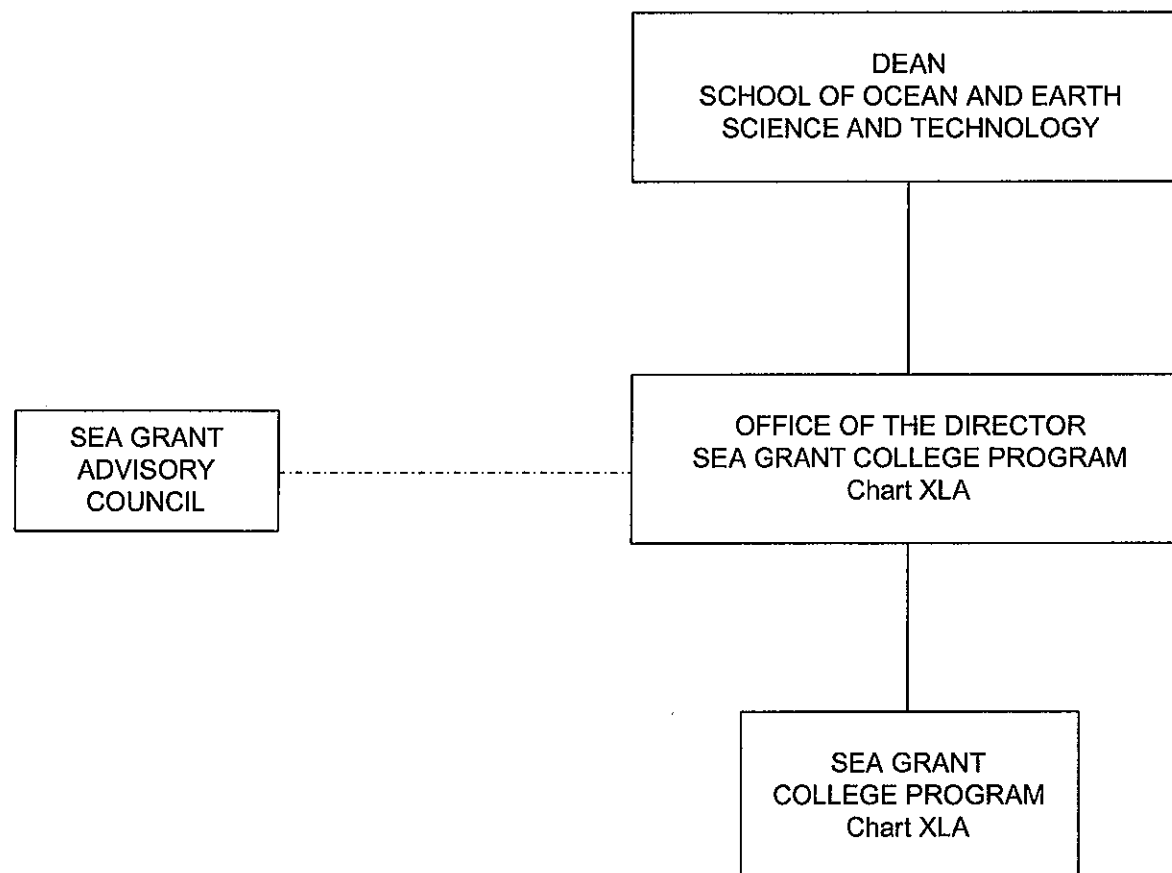


CHART UPDATED
DATE JUL - 1 2007

STATE OF HAWAII
UNIVERSITY OF HAWAII
UNIVERSITY OF HAWAII AT MANOA
SCHOOL OF OCEAN AND EARTH
SCIENCE AND TECHNOLOGY

SEA GRANT COLLEGE PROGRAM
ORGANIZATION CHART

CHART XLA

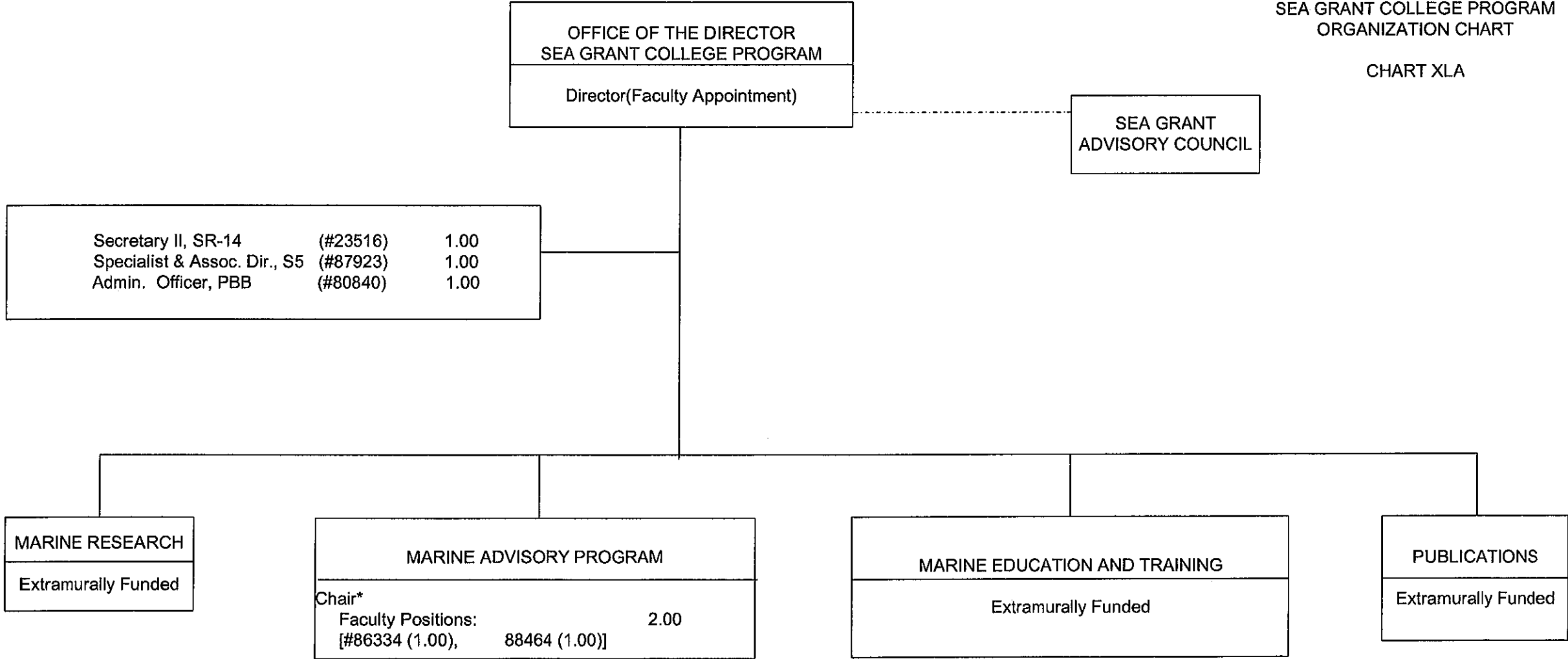
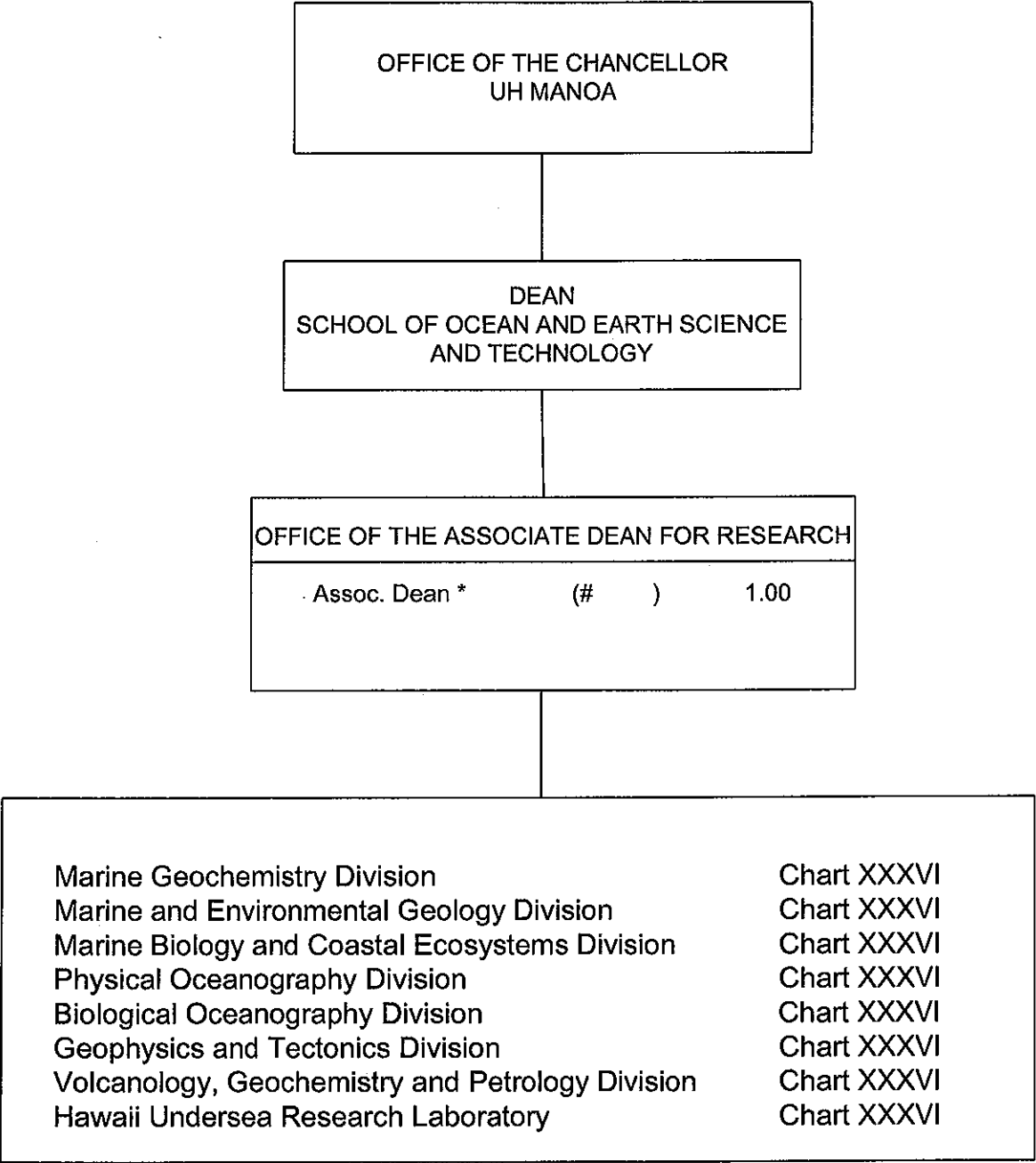


CHART UPDATED General Funds 5.00

DATE JUL - 1 2007

APPROVED:
Brian Taylor
Brian Taylor, Dean 07-01-2007



STATE OF HAWAII
UNIVERSITY OF HAWAII
UNIVERSITY OF HAWAII AT MANOA
SCHOOL OF OCEAN AND EARTH
SCIENCE AND TECHNOLOGY

OFFICE OF THE ASSOCIATE DEAN FOR
RESEARCH
POSITION ORGANIZATION CHART
CHART XLI

* to be established