

OFFICE OF UNIVERSITY OF HAWAII AT MANOA
CHANCELLOR

OFFICE OF THE VICE CHANCELLOR
FOR ACADEMIC AFFAIRS

OFFICE OF THE DEAN*
CHART XLI-A

STATE OF HAWAII
UNIVERSITY OF HAWAII
UNIVERSITY OF HAWAII AT MANOA
COLLEGE OF TROPICAL AGRICULTURE AND HUMAN
RESOURCES

ORGANIZATIONAL CHART
CHART XLI

OFFICE OF PUBLICATIONS AND INFORMATION
CHART XLI-B

OFFICE OF ADMINISTRATIVE SERVICES
CHART XLI-C

OFFICE OF PLANNING AND MANAGEMENT SYSTEMS
CHART XLI-D

OFFICE OF THE ASSOCIATE DEAN
FOR ACADEMIC AND
STUDENT AFFAIRS
CHART XLI-E

OFFICE OF THE ASSOCIATE DEAN
AND ASSOCIATE DIRECTOR
FOR RESEARCH
CHART XLI-F

OFFICE OF THE ASSOCIATE DEAN
AND ASSOCIATE DIRECTOR
FOR COOPERATIVE EXTENSION
CHART XLI-G

COUNTY ADMINISTRATION
CHART XLI-Q,R,S,T,U,V,W

EXTENSION PROGRAMS
CHART XLI-N

FAMILY AND CONSUMER SCIENCES
CENTER ON THE FAMILY
4-H OFFICE
HUMAN NUTRITION, FOOD AND ANIMAL SCIENCES
MOLECULAR BIOSCIENCES AND BIOENGINEERING
NATURAL RESOURCES & ENVIRONMENTAL MANAGEMENT
PLANT AND ENVIRONMENTAL PROTECTION SCIENCES
TROPICAL PLANT & SOIL SCIENCE

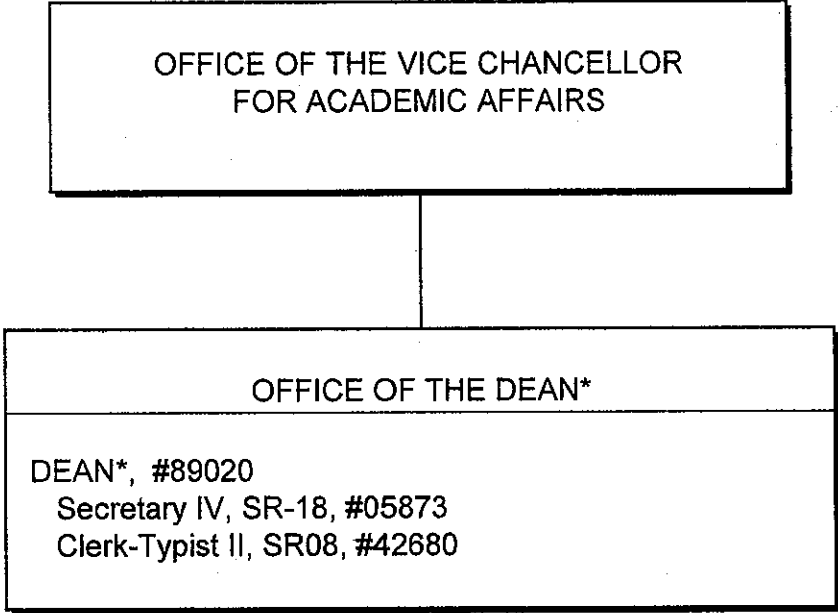
CHART XLI-H
CHART XLI-O
CHART XLI-P
CHART XLI-I
CHART XLI-J
CHART XLI-K
CHART XLI-L
CHART XLI-M

CHART UPDATED
DATE JUL - 1 2007

* & Director of Research and Cooperative Extension

STATE OF HAWAII
UNIVERSITY OF HAWAII
UNIVERSITY OF HAWAII AT MANOA
COLLEGE OF TROPICAL AGRICULTURE AND HUMAN
RESOURCES

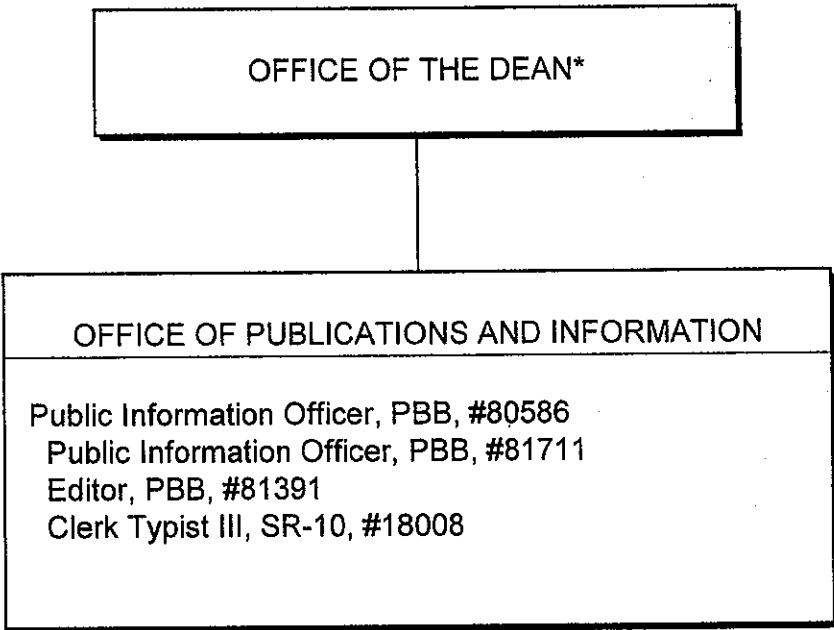
OFFICE OF THE DEAN
POSITION ORGANIZATION CHART: XLI-A



*& Director of Research and Cooperative Extension

STATE OF HAWAII
UNIVERSITY OF HAWAII
UNIVERSITY OF HAWAII AT MANOA
COLLEGE OF TROPICAL AGRICULTURE AND HUMAN RESOURCES

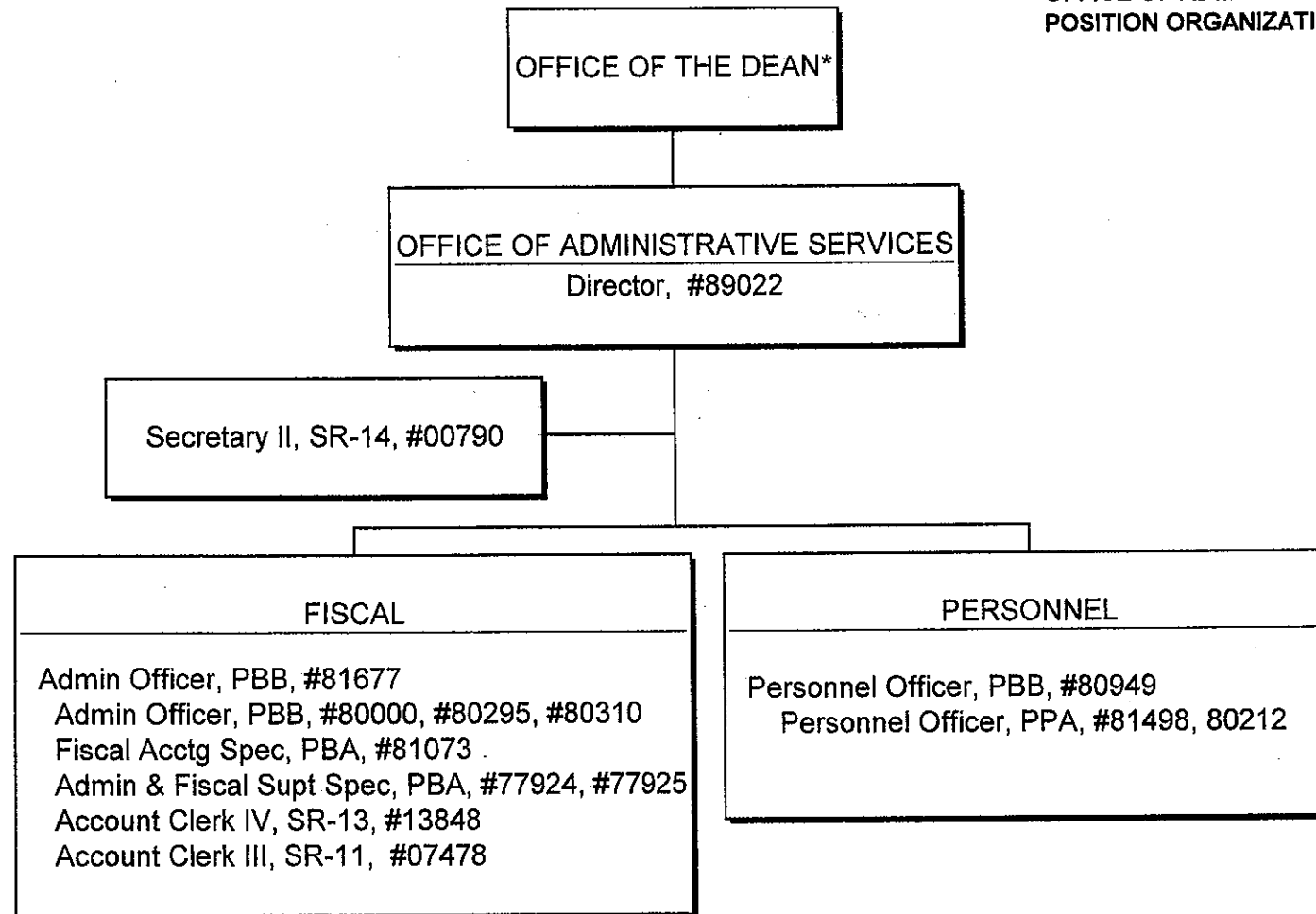
OFFICE OF PUBLICATIONS AND INFORMATION
POSITION ORGANIZATION CHART: XLI-B



*& Director of Research and Cooperative Extension

STATE OF HAWAII
UNIVERSITY OF HAWAII
UNIVERSITY OF HAWAII AT MANOA
COLLEGE OF TROPICAL AGRICULTURE AND HUMAN RESOURCES

OFFICE OF ADMINISTRATIVE SERVICES
POSITION ORGANIZATION CHART: XLI-C

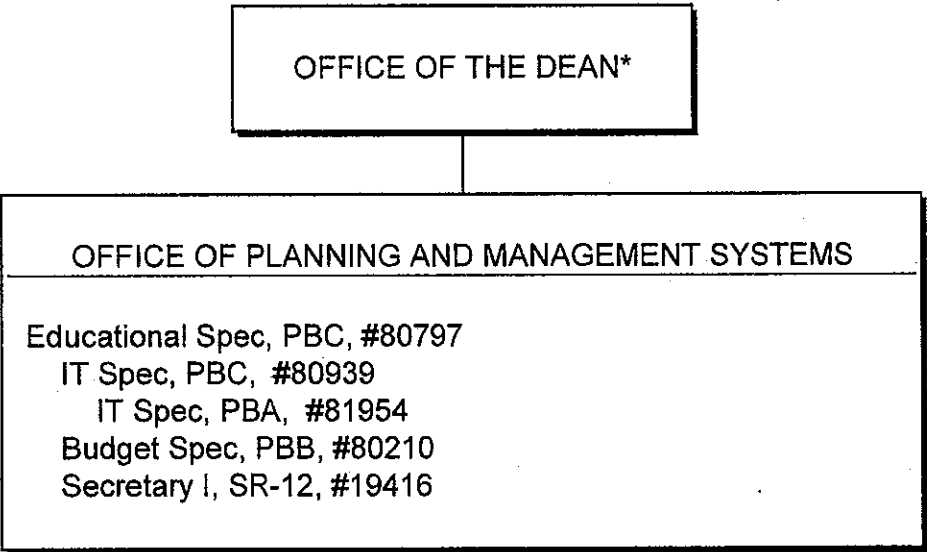


*& Director of Research and Cooperative Extension

CHART UPDATED
DATE JUL - 1 2007

STATE OF HAWAII
UNIVERSITY OF HAWAII
UNIVERSITY OF HAWAII AT MANOA
COLLEGE OF TROPICAL AGRICULTURE AND HUMAN RESOURCES

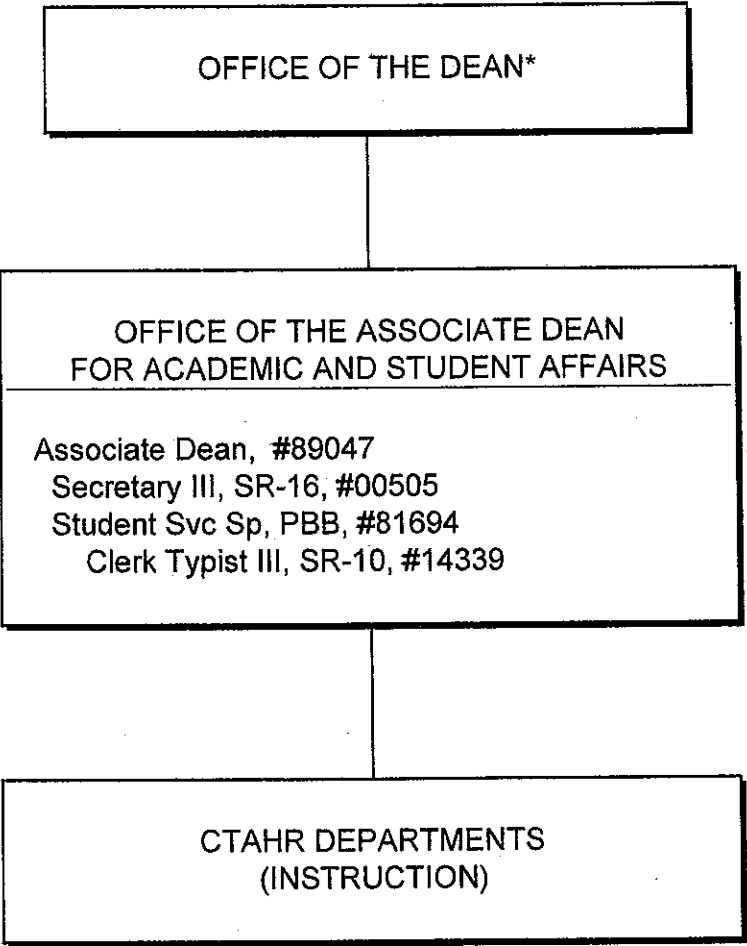
OFFICE OF PLANNING AND MANAGEMENT SYSTEMS
POSITION ORGANIZATION CHART: XLI-D



* & Director of Research and Cooperative Extension

STATE OF HAWAII
UNIVERSITY OF HAWAII
UNIVERSITY OF HAWAII AT MANOA
COLLEGE OF TROPICAL AGRICULTURE AND HUMAN RESOURCES

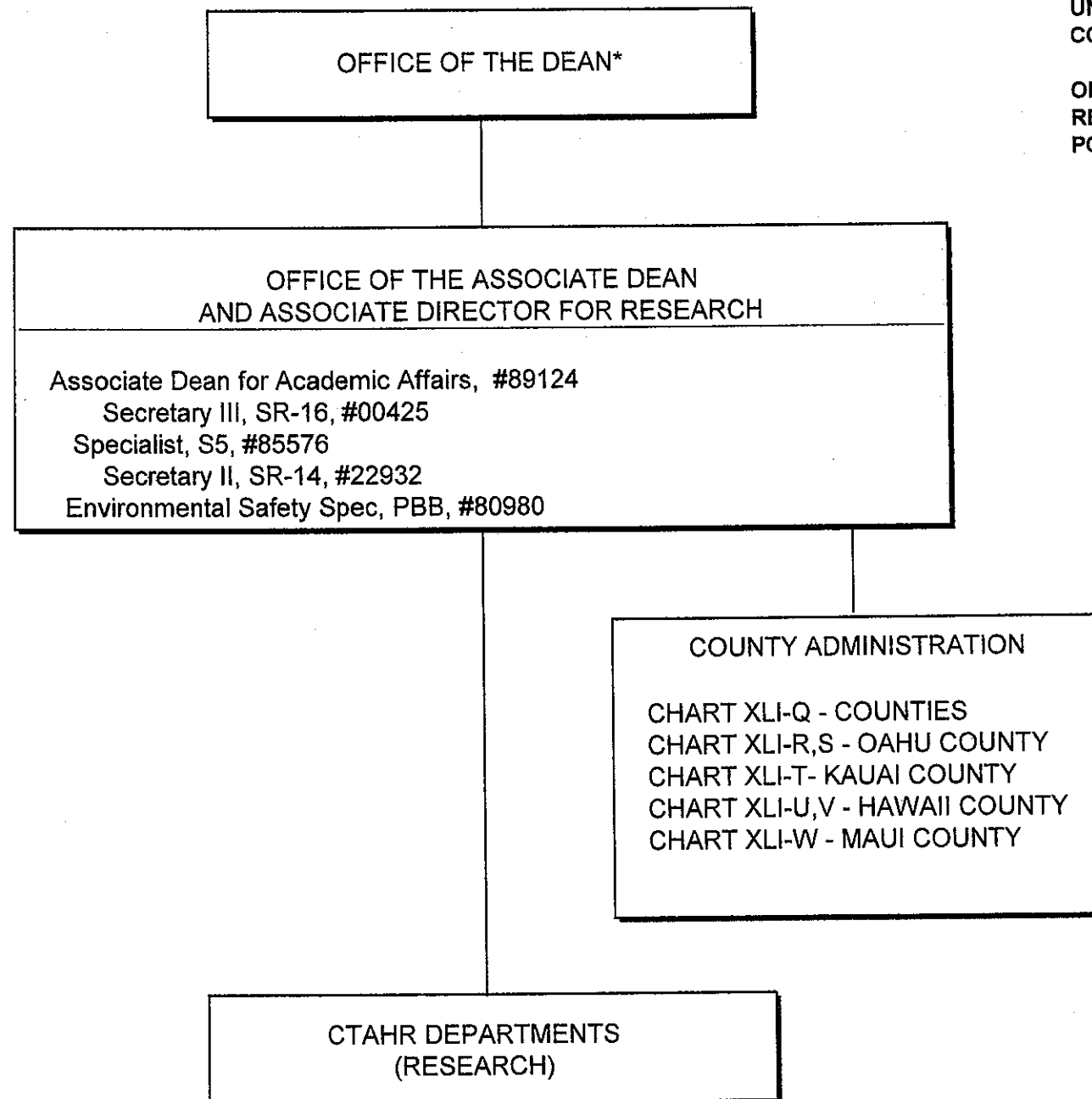
OFFICE OF THE ASSOCIATE DEAN FOR ACADEMIC AND STUDENT
AFFAIRS
POSITION ORGANIZATION CHART: XLI-E



*& Director of Research and Cooperative Extension

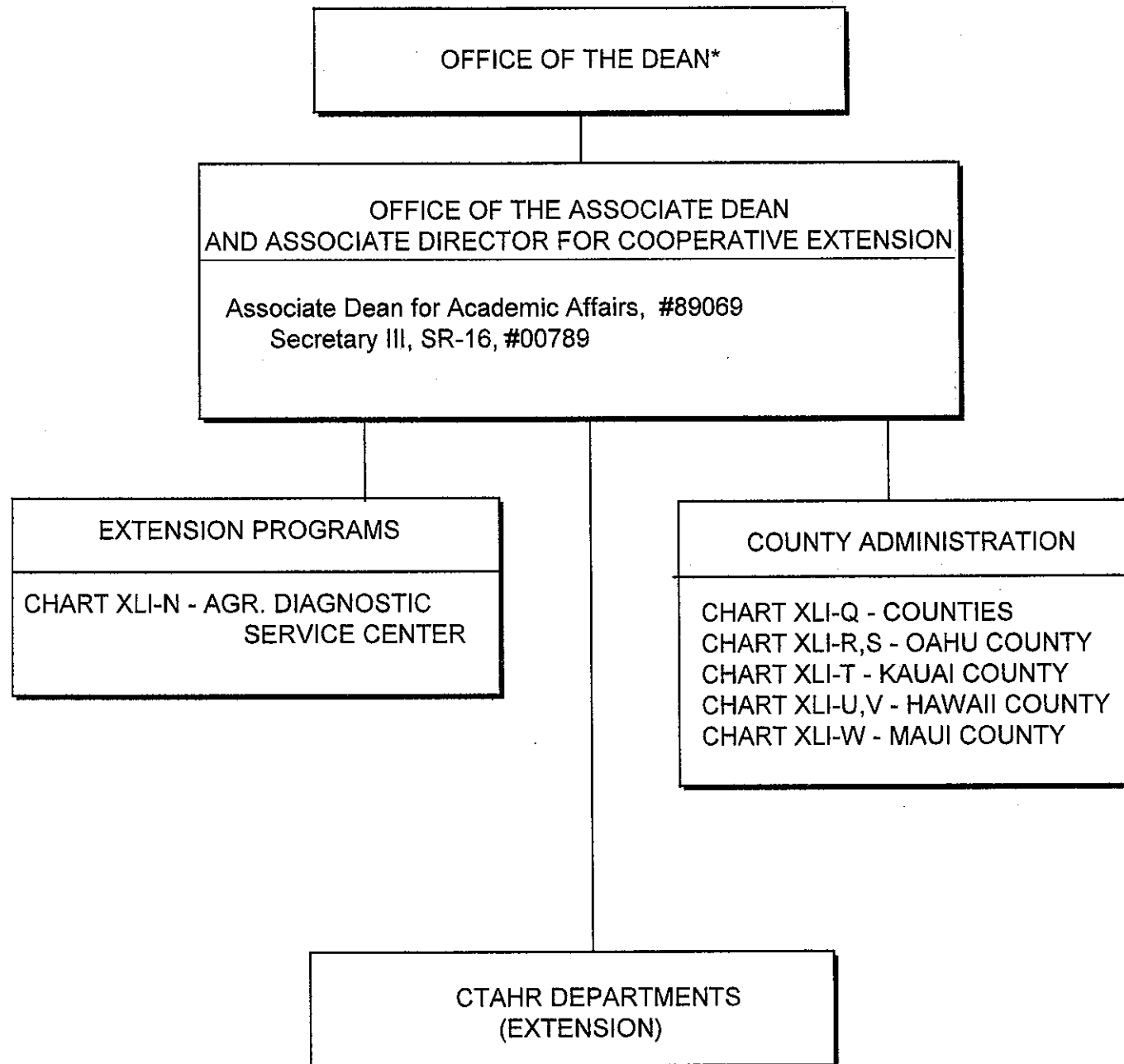
STATE OF HAWAII
UNIVERSITY OF HAWAII
UNIVERSITY OF HAWAII AT MANOA
COLLEGE OF TROPICAL AGRICULTURE AND HUMAN RESOURCES

OFFICE OF THE ASSOCIATE DEAN AND ASSOCIATE DIRECTOR FOR
RESEARCH
POSITION ORGANIZATION CHART: XLI-F



*& Director of Research and Cooperative Extension

CHART UPDATED
DATE JUL - 1 2007



STATE OF HAWAII
UNIVERSITY OF HAWAII
UNIVERSITY OF HAWAII AT MANOA
COLLEGE OF TROPICAL AGRICULTURE AND HUMAN RESOURCES

OFFICE OF THE ASSOCIATE DEAN AND ASSOCIATE DIRECTOR
FOR COOPERATIVE EXTENSION
POSITION ORGANIZATION CHART: XLI-G

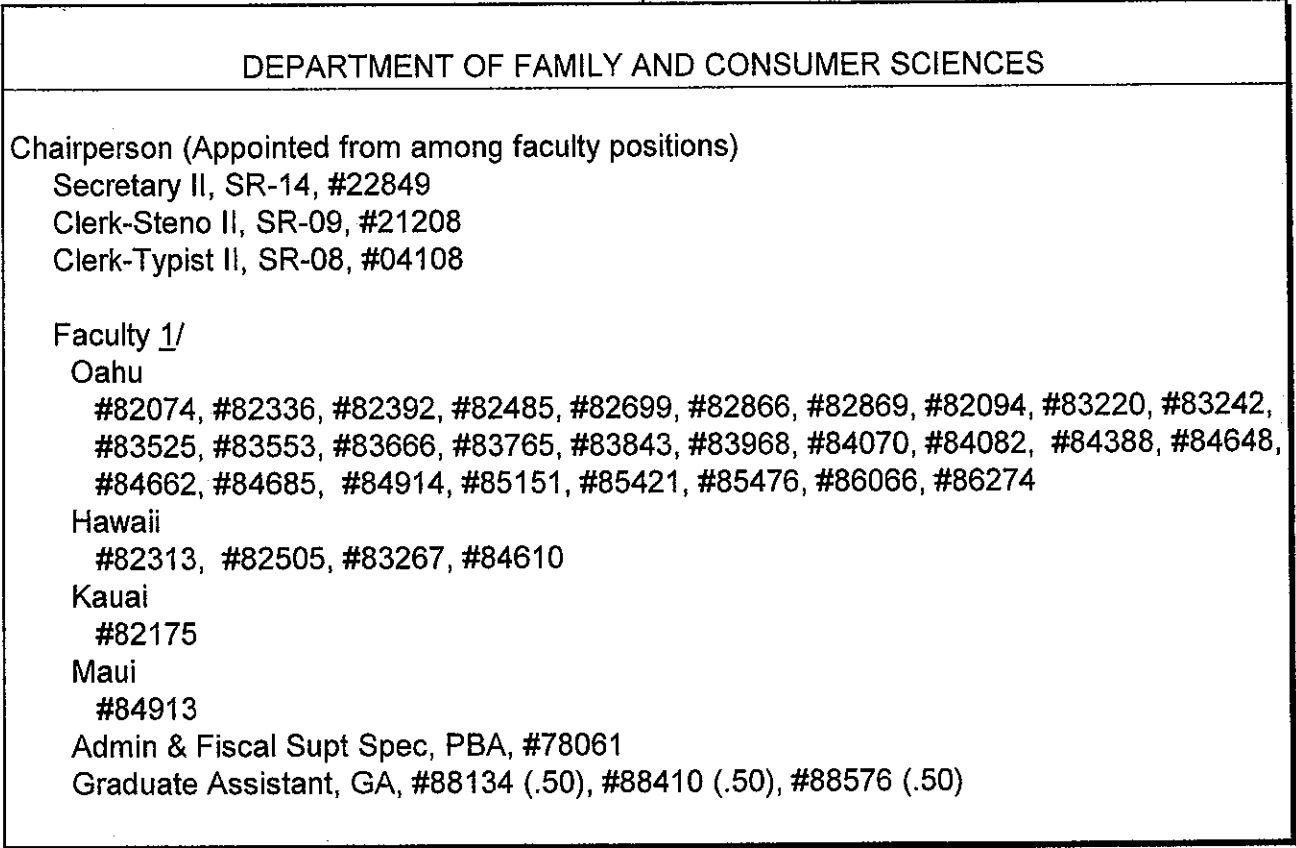
* & Director of Research and Cooperative Extension

CHART UPDATED
DATE JUL - 1 2007

STATE OF HAWAII
UNIVERSITY OF HAWAII
UNIVERSITY OF HAWAII AT MANOA
COLLEGE OF TROPICAL AGRICULTURE AND HUMAN RESOURCES

OFFICES OF THE ASSOCIATE DEANS AND DIRECTORS
FOR ACADEMIC AND STUDENT AFFAIRS,
RESEARCH, AND COOPERATIVE EXTENSION

DEPARTMENT OF FAMILY AND CONSUMER SCIENCES
POSITION ORGANIZATION CHART: XLI-H



1/ Research FTE: 1.90, Extension FTE: 4.45, Instruction FTE: 15.60

OFFICES OF THE ASSOCIATE DEANS AND DIRECTORS
FOR ACADEMIC AND STUDENT AFFAIRS,
RESEARCH, AND COOPERATIVE EXTENSION

STATE OF HAWAII
UNIVERSITY OF HAWAII
UNIVERSITY OF HAWAII AT MANOA
COLLEGE OF TROPICAL AGRICULTURE AND HUMAN RESOURCES

DEPARTMENT OF HUMAN NUTRITION, FOOD AND ANIMAL
SCIENCES
POSITION ORGANIZATION CHART: XLI-I

DEPARTMENT OF HUMAN NUTRITION, FOOD AND ANIMAL SCIENCES

Chairperson (Appointed from among faculty positions)

Secretary II, SR-14, #00400

Clerk-Typist II, SR-08, #12195, #15513, #42682

Faculty ^{1/}

Oahu

#82090, #82107, #82248, #82865, #82945, #83017, #83255, #83510, #83633, #83742, #83811, #83830, #83862,
#84227, #84228, #84306, #84323, #84439, #84449, #84454, #84496, #84512, #84668, #84919, #84920, #87443, #87552

Maui

#83728, #84163

Hawaii

#84158, #84276, #84297

Kauai

#82363

Admin & Fiscal Supt Spec, PBA, #80386

Research Associate, PBB, #80410

Research Associate, PBA, #77092

IT Spec, PBB, #80037

Graduate Asst, GA-R, #88088 (.50), #88165 (.50), #88241 (.50), #88303 (.50), #88438 (.50), #88565 (.50)

Agr Research Technician VI, SR-18 #00428

Agr Research Technician V, SR-16, #00395, #00396, #00432, #11024

Agr Research Technician IV, SR-14, #00433

Agr Research Technician III, SR-11, #00418, #00434, #03712

Agr Research Aid II, SR-09, #00441

Equipment Operator III, BC-09, #00419

^{1/} Research FTE: 6.45, Extension FTE: 3.25, Instruction FTE: 9.65

CHART UPDATED

DATE JUL - 1 2007

STATE OF HAWAII
UNIVERSITY OF HAWAII
UNIVERSITY OF HAWAII AT MANOA
COLLEGE OF TROPICAL AGRICULTURE AND HUMAN RESOURCES

DEPARTMENT OF MOLECULAR BIOSCIENCES AND BIOSYSTEMS
ENGINEERING
POSITION ORGANIZATION CHART: XLI-J

OFFICES OF THE ASSOCIATE DEANS AND DIRECTORS
FOR ACADEMIC AND STUDENT AFFAIRS,
RESEARCH, AND COOPERATIVE EXTENSION

DEPARTMENT OF MOLECULAR BIOSCIENCES AND BIOENGINEERING

Chairperson (Appointed from among faculty positions)

Secretary II, SR-14, #12960

Clerk Typist II, SR-08, #00803, #14758

Faculty^{1/}

Oahu

#82027, #82432, #82919, #83034, #83184, #83343, #83690, #83767,

#83882, #84114, #84193, #84600, #84617, #84631, #87523, #85425, #85517

Admin & Fiscal Supt Spec, PBA, #78046

Mechanical Engineer, PBB, #80784

Research Associate, PBB, #80323, #80324, #80409, #81325

Graduate Assistant, GA-R, #88219 (.50), #88509 (.50), #88630 (.50), #88643 (.50)

Agr Eqp Dev Wkg Supv, WS-13, #05729

Agr Lab Technician I, BC-12, #05730

^{1/} Research FTE: 7.55, Extension FTE: .50, Instruction FTE: 3.40

CHART UPDATED
DATE JUL - 1 2007

STATE OF HAWAII
UNIVERSITY OF HAWAII
UNIVERSITY OF HAWAII AT MANOA
COLLEGE OF TROPICAL AGRICULTURE AND HUMAN RESOURCES

DEPARTMENT OF NATURAL RESOURCES AND ENVIRONMENTAL
MANAGEMENT
POSITION ORGANIZATION CHART: XLI-K

OFFICES OF THE ASSOCIATE DEANS AND DIRECTORS
FOR ACADEMIC AND STUDENT AFFAIRS,
RESEARCH, AND COOPERATIVE EXTENSION

DEPARTMENT OF NATURAL RESOURCES AND ENVIRONMENTAL MANAGEMENT

Chairperson (Appointed from among faculty positions)
Secretary II, SR-14, #05838
Clerk Typist II, SR-08, #00397, #42681

Faculty 1/
Oahu

#82058, #82516, #82598, #82772, #83117, #83629, #83770, #83824, #83851, #84120,
#84171, #84216, #84488, #84627, #84872, #84915, #85522, #85539, #86242, #87234

Hawaii

#82373, #83459

Educational Spec. PBB, #80391

Research Associate, PBA, #80320

Admin & Fiscal Supt Spec, PBA, #78324

Graduate Assistant, GA #88028 (.50), #88181 (.50), #88431 (.50), #88494 (.50)

Agr Research Technician IV, SR-14, #00398

1/ Research FTE: 9.05, Extension FTE: 2.95, Instruction FTE: 5.80

CHART UPDATED

DATE JUL - 1 2007

OFFICES OF THE ASSOCIATE DEANS AND DIRECTORS
FOR ACADEMIC AND STUDENT AFFAIRS,
RESEARCH, AND COOPERATIVE EXTENSION

STATE OF HAWAII
UNIVERSITY OF HAWAII
UNIVERSITY OF HAWAII AT MANOA
COLLEGE OF TROPICAL AGRICULTURE AND HUMAN RESOURCES

DEPARTMENT OF PLANT AND ENVIRONMENTAL PROTECTION
SCIENCES
POSITION ORGANIZATION CHART: XLI-L

DEPARTMENT OF PLANT AND ENVIRONMENTAL PROTECTION SCIENCES

Chairperson (Appointed from among faculty positions)

Secretary II, SR-14, #07477

Clerk-Typist II, SR-08, #00794, #15509

Faculty 1/

Oahu

#82047, #82139, #82238, #82550, #82687, #82976, #83067,
#83320, #83513, #83884, #84006, #84041, #84138, #84316,
#84489, #84911, #85510, #85547, #85543, #85548, #85551

Maui

#86034, #85530

Hawaii

#82985, #82722, #83462, #83542, #85538

Kauai

#83816, #83840, #85505

Admin & Fiscal Support, PBA, #77864

Educational Specialist, PBB, #80250

Research Associate, PBB, #80385, #80388, #81178, #81311

Research Associate, PBA, #81313

Graduate Assistant, GA, #88486 (.50), #84932 (.50)

Agr Research Technician V, SR-16, #00442

Agr Research Technician IV, SR-14, #24270

Agr Research Technician III, SR-11, #24269

1/ Research FTE: 6.66, Extension FTE: 3.26, Instruction FTE: 3.00

CHART UPDATED

JUL - 1 2007

DATE

OFFICES OF THE ASSOCIATE DEANS AND DIRECTORS
FOR ACADEMIC AND STUDENT AFFAIRS,
RESEARCH, AND COOPERATIVE EXTENSION

DEPARTMENT OF TROPICAL PLANT AND SOIL SCIENCE

Chairperson (Appointed from among faculty positions)

Secretary II, SR-14, #00793

Clerk-Steno III, SR-11, #00399, #15512

Faculty 1/

Oahu

#82023, #82181, #82240, #82464, #82704, #82747, #83142, #83159,
#83260, #83304, #83388, #83682, #83740, #83785, #83938, #84067,
#84321, #84408, #84420, #84481, #84501, #84640, #84916, #85555
#85563, #85778, #86275

Maui

#82881, #83848, #84075, #84530, #85477, #87584

Hawaii

#82758, #83054, #82951, #83073, #83286, #83515, #84354, #85542

Kauai

#82196, #84500

Admin & Fiscal Support, PBA, #77795

Educational Specialist, PBB, #81362

Research Associate, PBB, #80270, #80313

Graduate Assistant, GA, #88171 (.50), #88423 (.50)

Agr Research Technician V, SR-16, #11019

Agr Research Technician IV, SR-14, #05392, #00397

STATE OF HAWAII
UNIVERSITY OF HAWAII
UNIVERSITY OF HAWAII AT MANOA
COLLEGE OF TROPICAL AGRICULTURE AND HUMAN
RESOURCES

DEPARTMENT OF TROPICAL PLANT AND SOIL SCIENCE
POSITION ORGANIZATION CHART: XLI-M

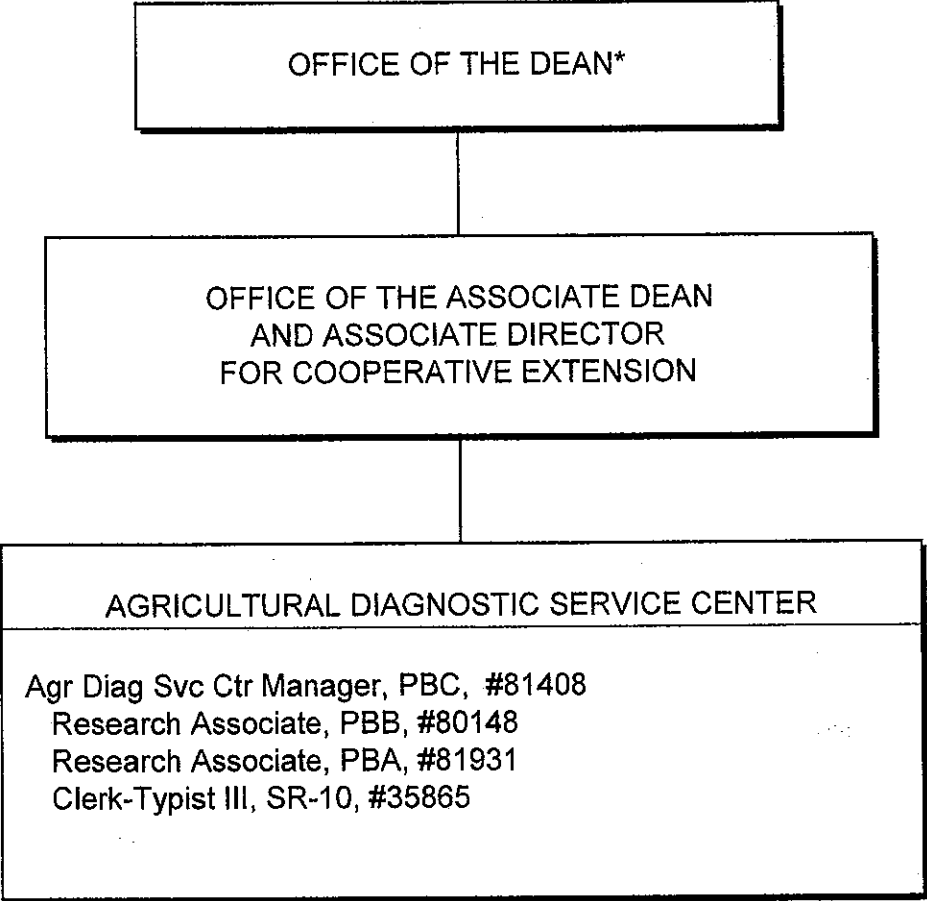
1/Research FTE: 6.75, Extension FTE: 6.85, Instruction FTE: 5.77

CHART UPDATED

DATE JUL - 1 2007

STATE OF HAWAII
UNIVERSITY OF HAWAII
UNIVERSITY OF HAWAII AT MANOA
COLLEGE OF TROPICAL AGRICULTURE AND HUMAN RESOURCES

AGRICULTURAL DIAGNOSTIC SERVICE CENTER
POSITION ORGANIZATION CHART: XLI-N



*& Director of Research and Cooperative Extension

STATE OF HAWAII
UNIVERSITY OF HAWAII
UNIVERSITY OF HAWAII AT MANOA
COLLEGE OF TROPICAL AGRICULTURE AND HUMAN RESOURCES

CENTER ON THE FAMILY
POSITION ORGANIZATION CHART: XLI-O

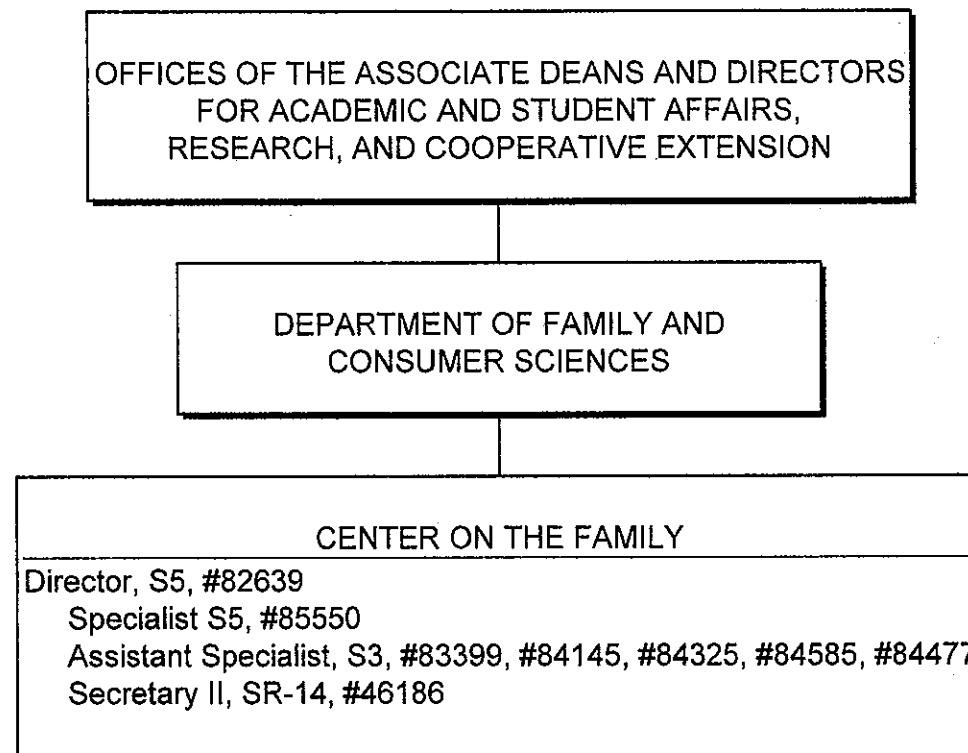


CHART UPDATED
DATE JUL - 1 2007

STATE OF HAWAII
UNIVERSITY OF HAWAII
UNIVERSITY OF HAWAII AT MANOA
COLLEGE OF TROPICAL AGRICULTURE AND HUMAN RESOURCES

4-H OFFICE
POSITION ORGANIZATION CHART: XLI-P

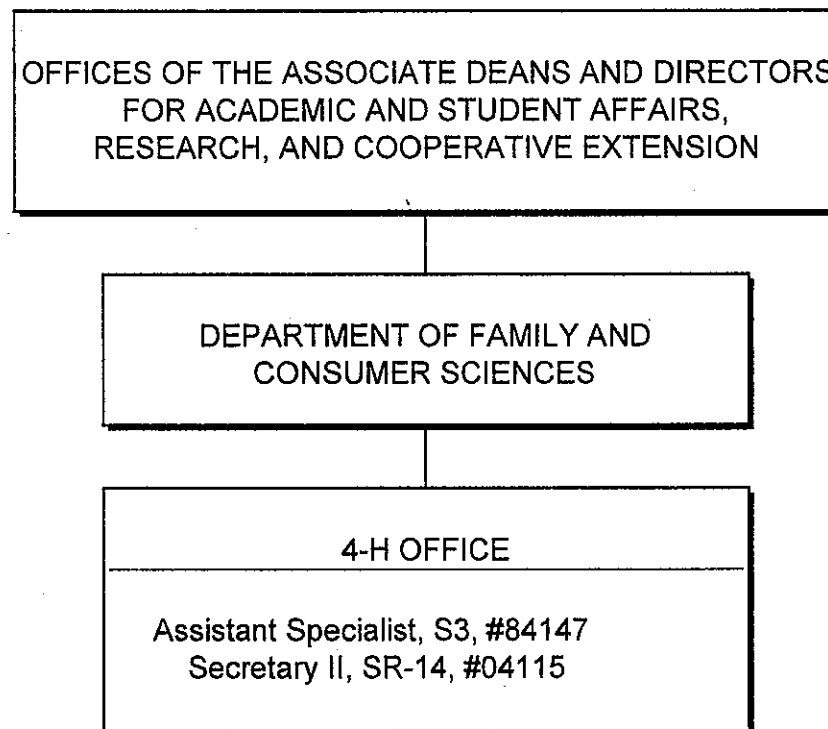
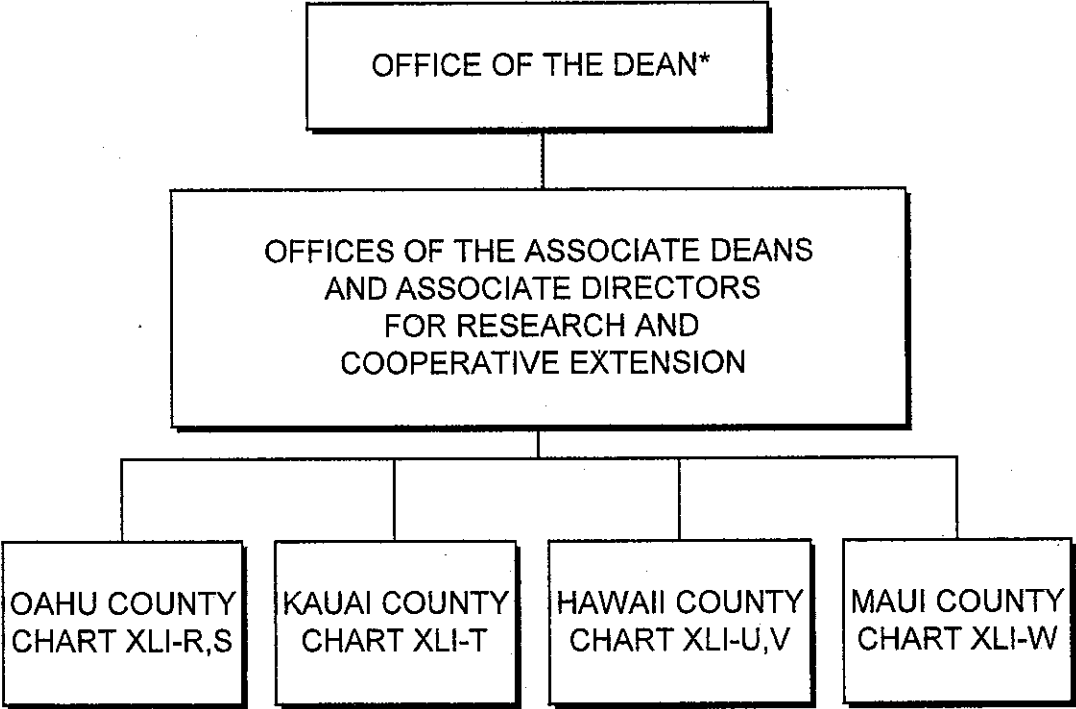


CHART UPDATED
DATE JUL - 1 2007

STATE OF HAWAII
UNIVERSITY OF HAWAII
UNIVERSITY OF HAWAII AT MANOA
COLLEGE OF TROPICAL AGRICULTURE AND HUMAN RESOURCES

COUNTY ADMINISTRATION
POSITION ORGANIZATION CHART: XLI-Q

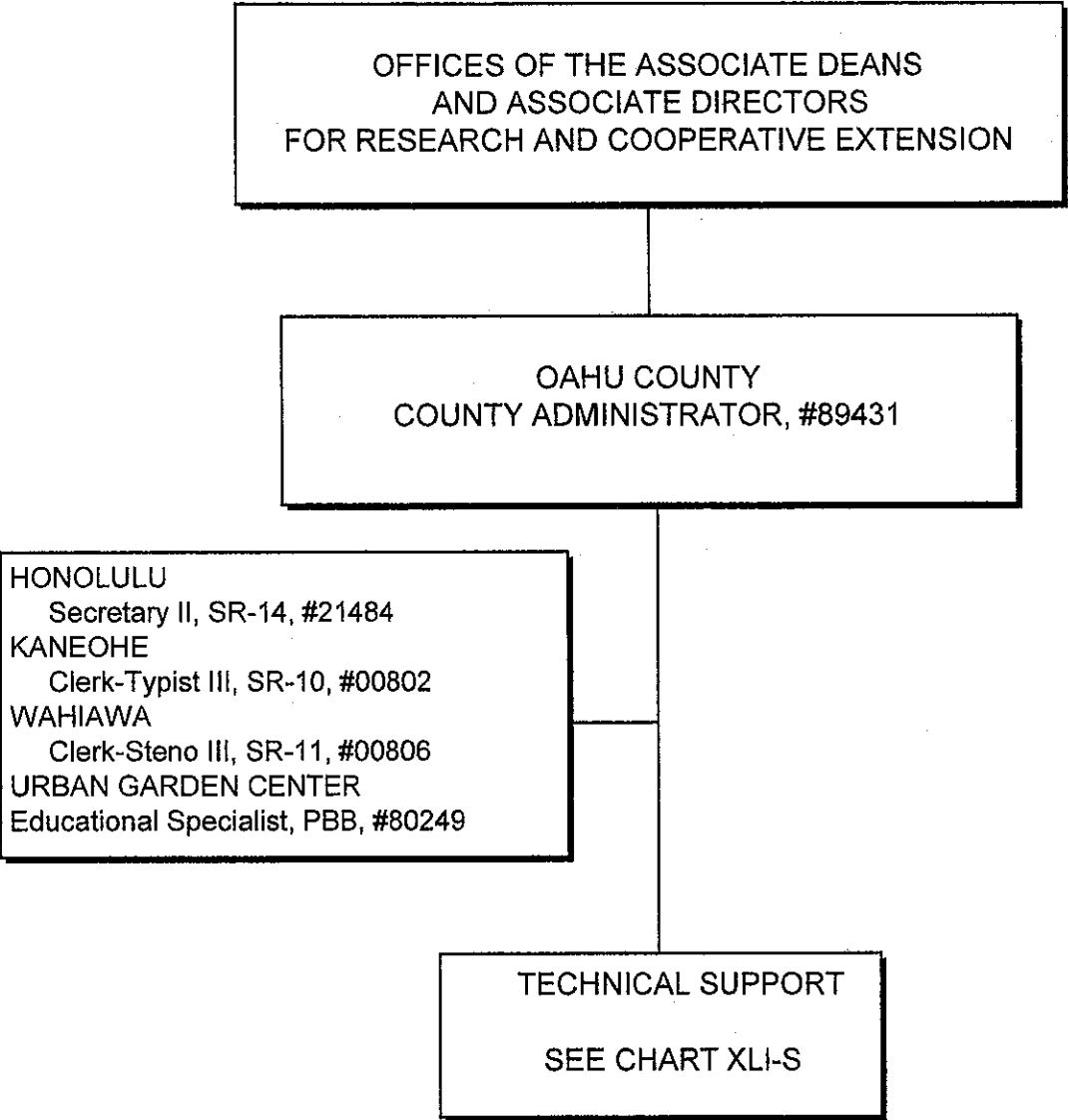


*& Director of Cooperative Science & Education

CHART UPDATED
DATE JUL - 1 2007

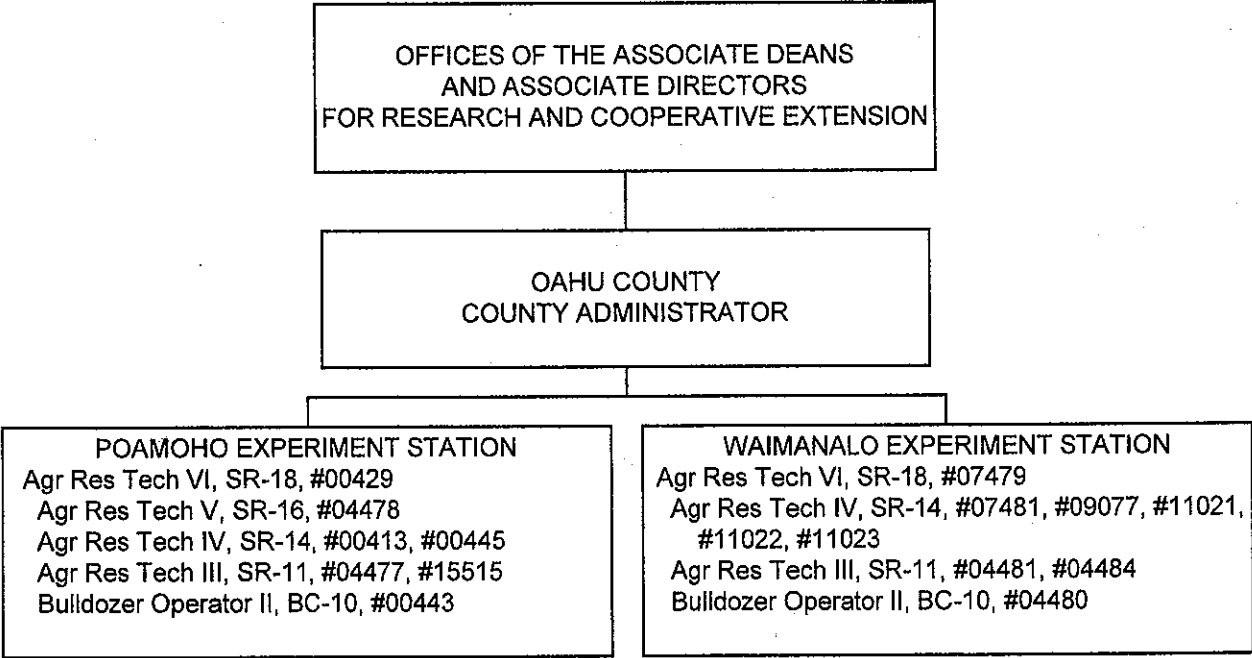
STATE OF HAWAII
UNIVERSITY OF HAWAII
UNIVERSITY OF HAWAII AT MANOA
COLLEGE OF TROPICAL AGRICULTURE AND HUMAN RESOURCES

OAHU COUNTY
POSITION ORGANIZATION CHART: XLI-R



STATE OF HAWAII
UNIVERSITY OF HAWAII
UNIVERSITY OF HAWAII AT MANOA
COLLEGE OF TROPICAL AGRICULTURE
AND HUMAN RESOURCES

OAHU COUNTY - TECHNICAL SUPPORT
POSITION ORGANIZATION CHART: XLI-S



STATE OF HAWAII
UNIVERSITY OF HAWAII
UNIVERSITY OF HAWAII AT MANOA
COLLEGE OF TROPICAL AGRICULTURE AND HUMAN RESOURCES

KAUAI COUNTY
POSITION ORGANIZATION CHART: XLI-T

OFFICES OF THE ASSOCIATE DEANS
AND ASSOCIATE DIRECTORS
FOR RESEARCH AND COOPERATIVE EXTENSION

KAUAI COUNTY
COUNTY ADMINISTRATOR
#89216

LIHUE
Secretary II, SR-14, #04003
KAPAA
Clerk-Steno III, SR-11, #13872

TECHNICAL SUPPORT
KAPAA
Agr Res Tech VI, SR-18, #12753
Agr Res Tech IV, SR-14, #12102, #12758
Agr Res Tech III, SR-11, #12760, #12761

CHART UPDATED
JUL - 1 2007
DATE

STATE OF HAWAII
UNIVERSITY OF HAWAII
UNIVERSITY OF HAWAII AT MANOA
COLLEGE OF TROPICAL AGRICULTURE AND HUMAN RESOURCES

HAWAII COUNTY
POSITION ORGANIZATION CHART: XLI-U

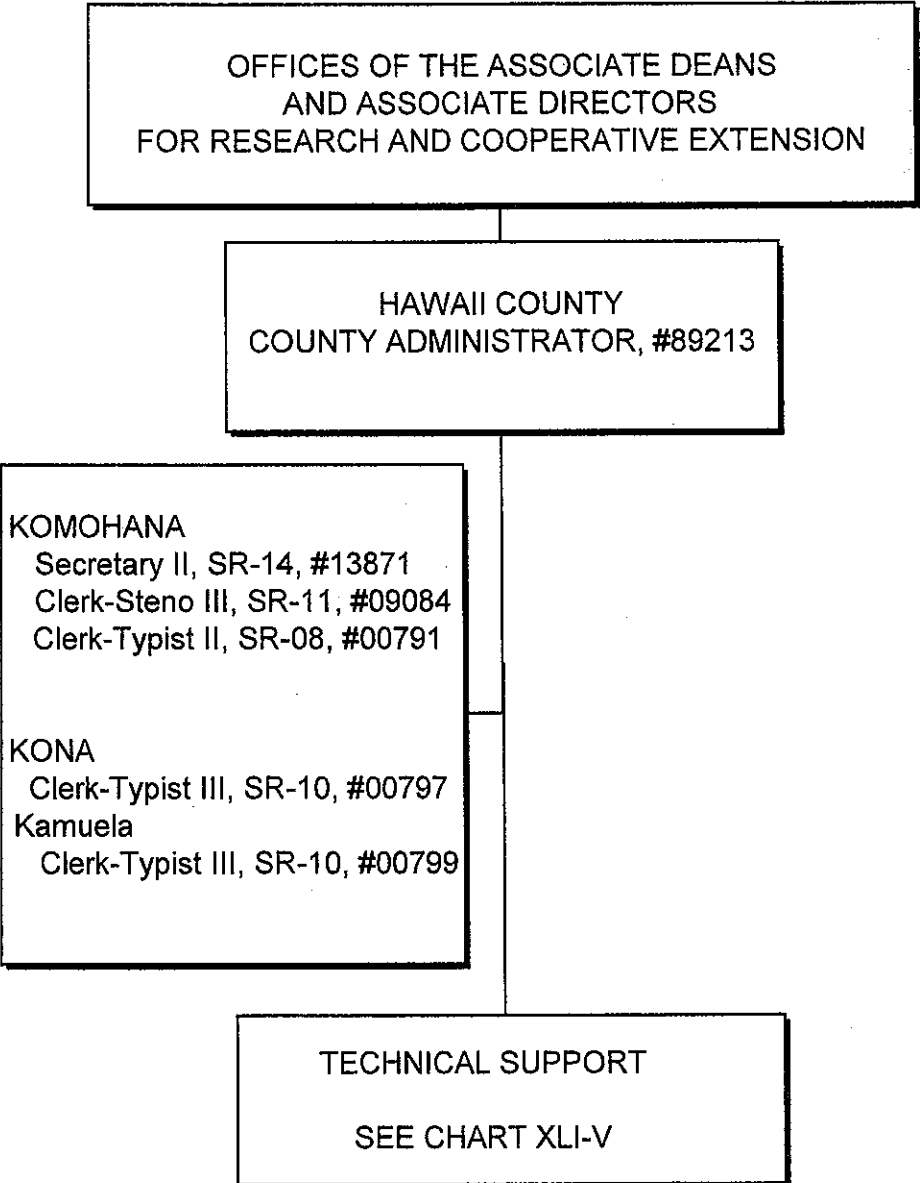


CHART UPDATED

DATE JUL - 1 2007

OFFICES OF THE ASSOCIATE DEANS
AND ASSOCIATE DIRECTORS
FOR RESEARCH AND COOPERATIVE EXTENSION

HAWAII COUNTY
COUNTY ADMIN, #89213
Educational Spec, PBB, #80311

STATE OF HAWAII
UNIVERSITY OF HAWAII
UNIVERSITY OF HAWAII AT MANOA
COLLEGE OF TROPICAL AGRICULTURE AND HUMAN RESOURCES

HAWAII COUNTY - TECHNICAL SUPPORT
POSITION ORGANIZATION CHART: XLI-V

WEST HAWAII
Agr Res Tech VI, SR-18, #13530

EAST HAWAII
Agr Res Tech VI, SR-18, #12099

MEALANI
Agr Res Tech V, SR-16, #13534
Agr Res Tech IV, SR-14, #12100, #14590
Agr Res Tech III, SR-11, #13205, #13709
#44868, #44867

WAIAKEA
Agr Res Tech V, SR-16, #12101, #12094, #14166
Agr Res Tech IV SR-14, #12096, #12766, #12767, #14168
Agr Res Tech III, SR-11, #17602, #12098, #15497
Building Maintenance Worker I, BC-09, #12095

HAMAKUA
Agr Res Tech III, SR-11, #13536

VOLCANO
Agr Res Tech V, SR-16, #13206
Agr Res Tech III, SR-11, #12097

KONA
Agr Res Tech V, SR-16, #00409
Agr Res Tech IV, SR-14, #22912

MALAMA-KI
Agr Res Tech III, SR-11, #12765

CHART UPDATED

DATE III - 1 2007

OFFICES OF THE ASSOCIATE DEANS
AND ASSOCIATE DIRECTORS
FOR RESEARCH AND COOPERATIVE EXTENSION

STATE OF HAWAII
UNIVERSITY OF HAWAII
UNIVERSITY OF HAWAII AT MANOA
COLLEGE OF TROPICAL AGRICULTURE AND HUMAN RESOURCES

MAUI COUNTY
POSITION ORGANIZATION CHART: XLI-W

MAUI COUNTY
COUNTY ADMINISTRATOR, #89215

KAHULUI
Secretary II, SR-14, #00792
Clerk-Typist II, SR-08, #42422
KULA
Clerk-Typist III, SR-10, #13714
MOLOKAI
Clerk-Typist III, SR-10, #28798

TECHNICAL SUPPORT

KULA
Agr Res Tech VI, SR-18, #00415
Agr Res Tech V, SR-16, #12901
Agr Res Tech IV, SR-14, #00436, #12897, #12898,
#12899, #12902
Agr Res Tech III, SR-11, #00404, #00406, #12900
MOLOKAI
Agr Res Tech IV, SR -14, #36749

CHART UPDATED
DATE JUL - 1 2007