

State of Hawai'i
University of Hawai'i
University of Hawai'i - West O'ahu
Office of the Chancellor

Position Organization Chart

Chart II

General Funds 5.00

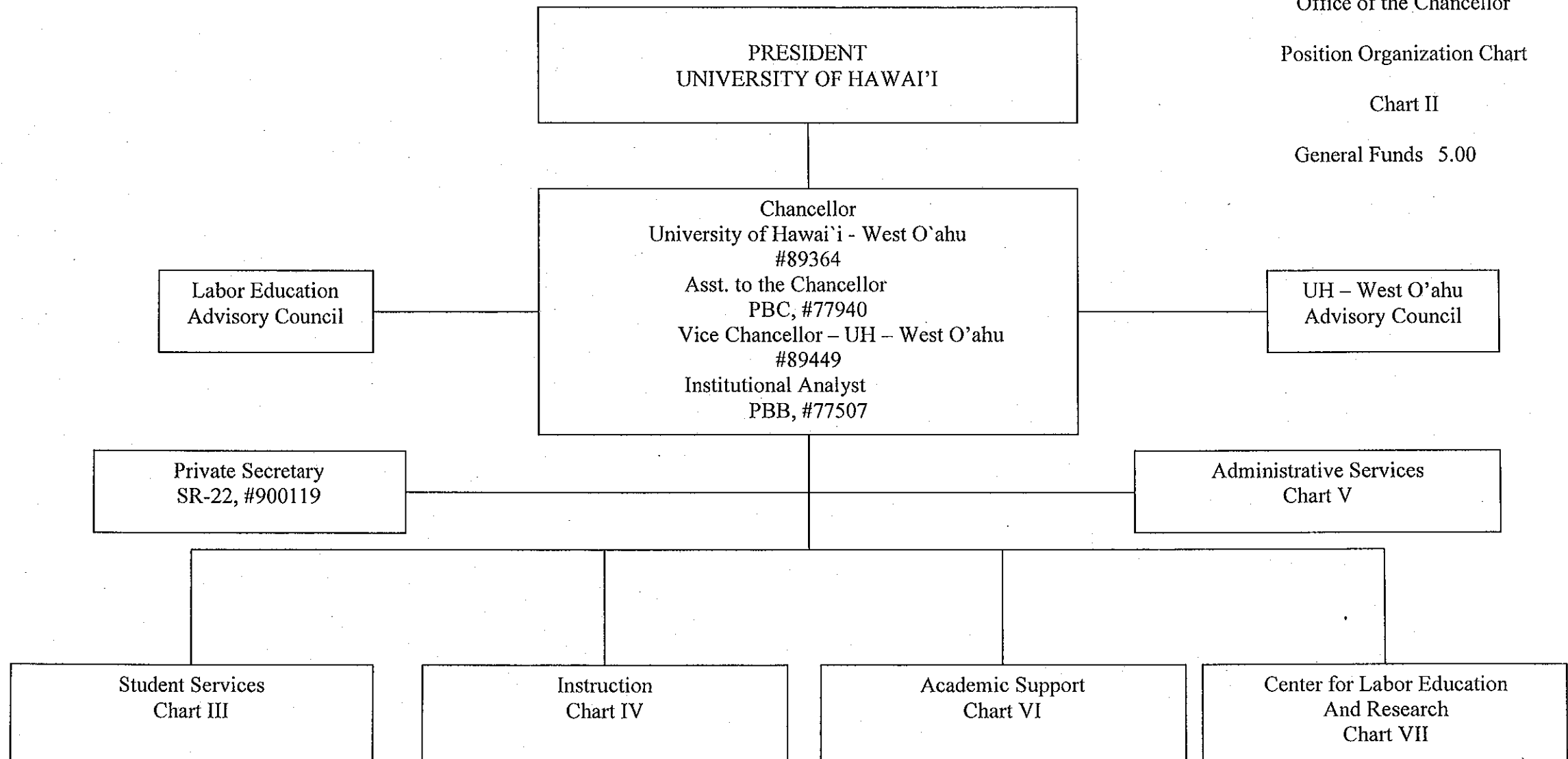


CHART UPDATED

DATE JUL - 1 2007

State of Hawai'i
University of Hawai'i
University of Hawai'i - West O'ahu
Student Services

Position Organization Chart

Chart III

General Funds

18.00

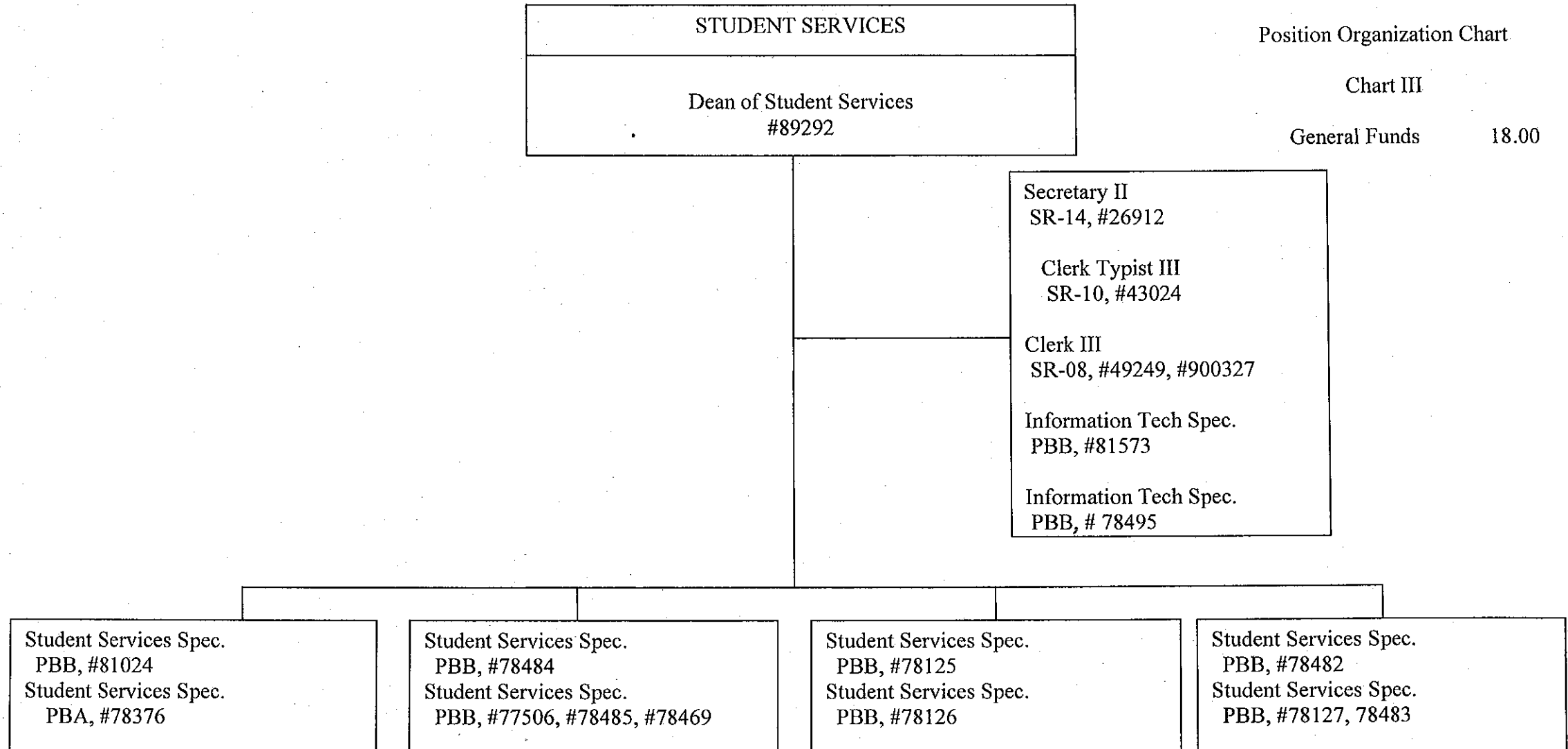


CHART UPDATED

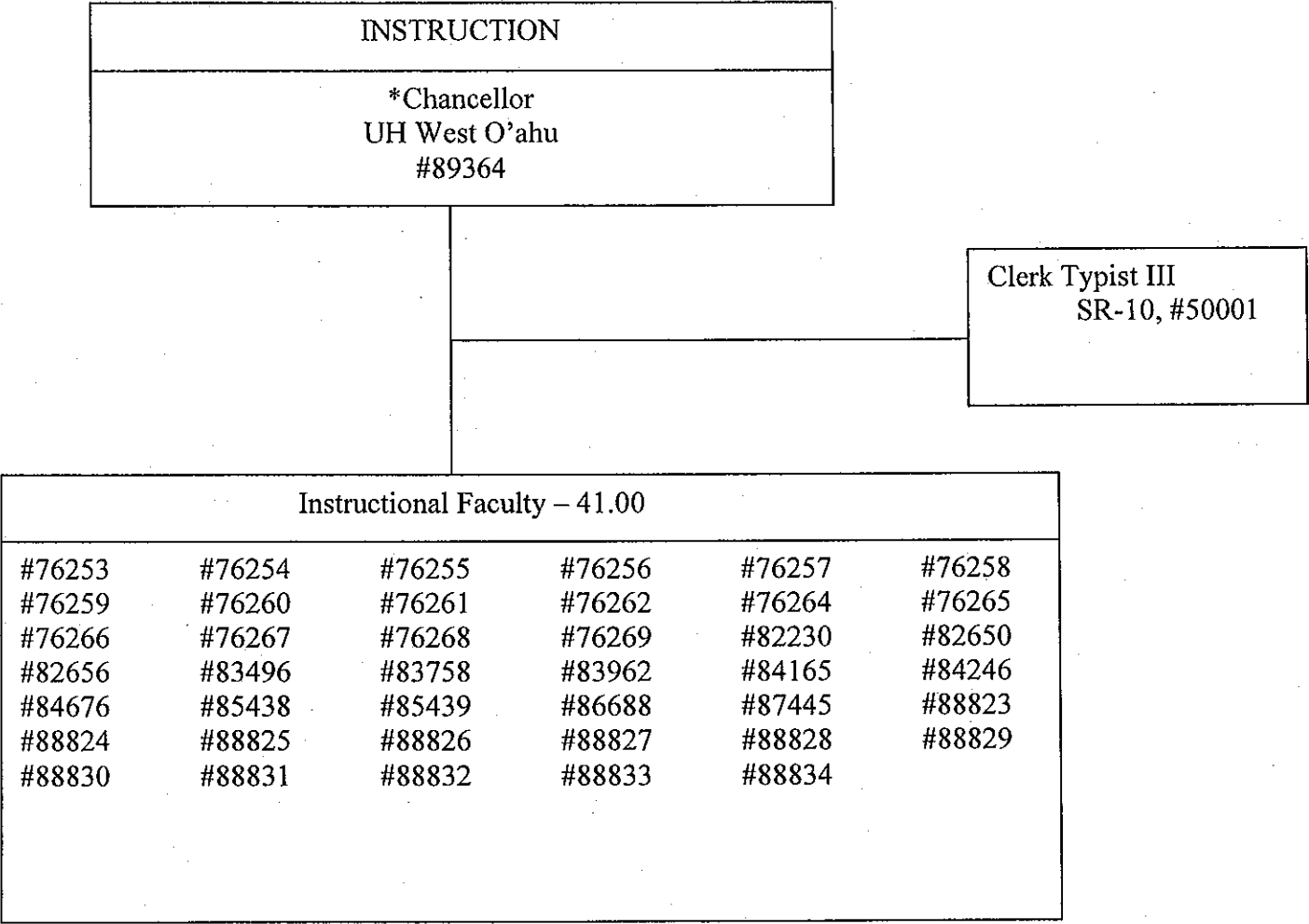
DATE JUL - 1 2007

State of Hawai'i
University of Hawai'i
University of Hawai'i - West O'ahu
Instruction

Position Organization Chart

Chart IV

General Funds 42.00



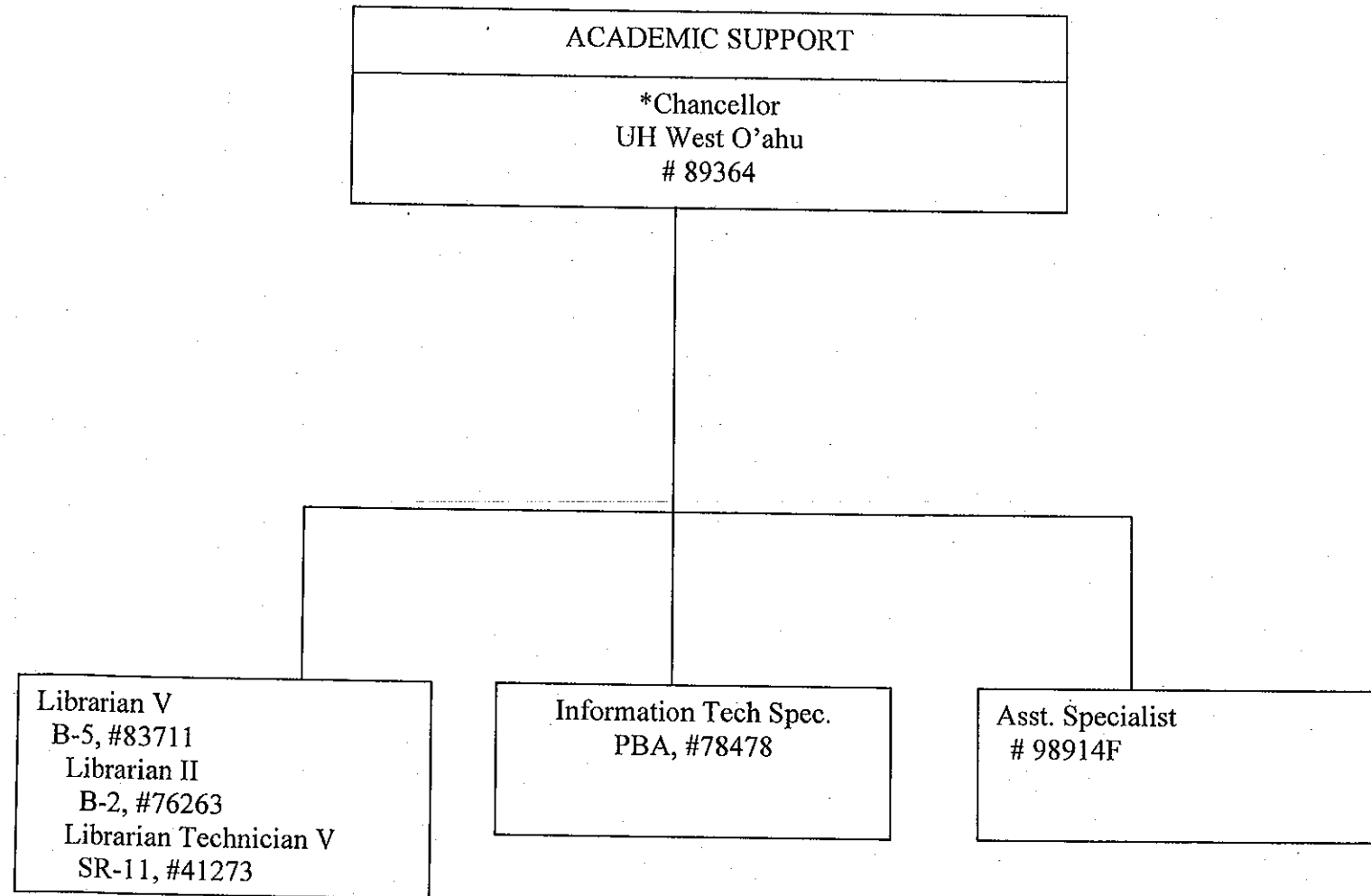
*Position count not included on this page

State of Hawai'i
University of Hawai'i
University of Hawai'i - West O'ahu
Academic Support

Position Organization Chart

Chart VI

General Funds 5.00



* Position count not included on this page.

CHART UPDATED

DATE JUL - 1 2007

Position Organization Chart

Chart I

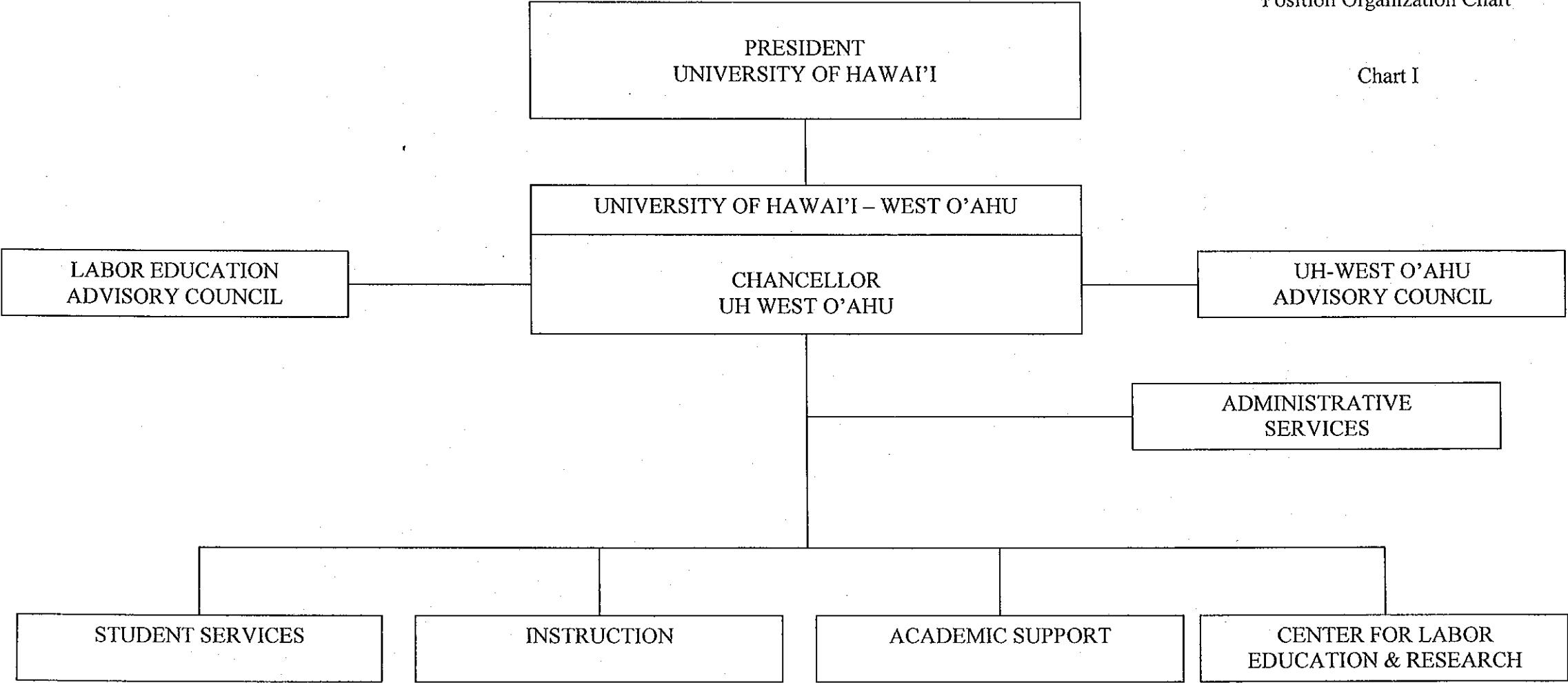
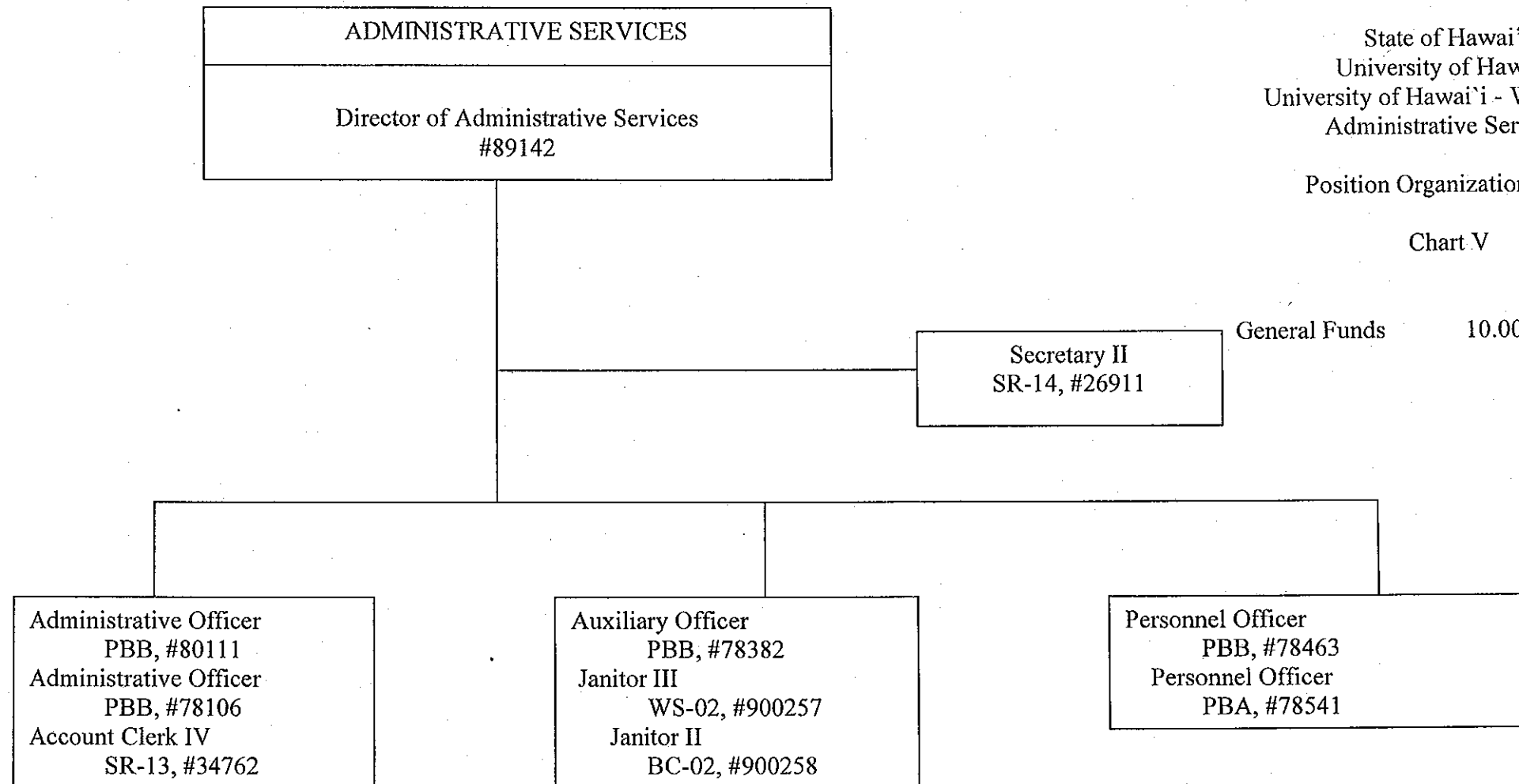


CHART UPDATED

DATE JUL - 1 2007



State of Hawai'i
University of Hawai'i
University of Hawai'i - West O'ahu
Administrative Services

Position Organization Chart

Chart V

General Funds 10.00

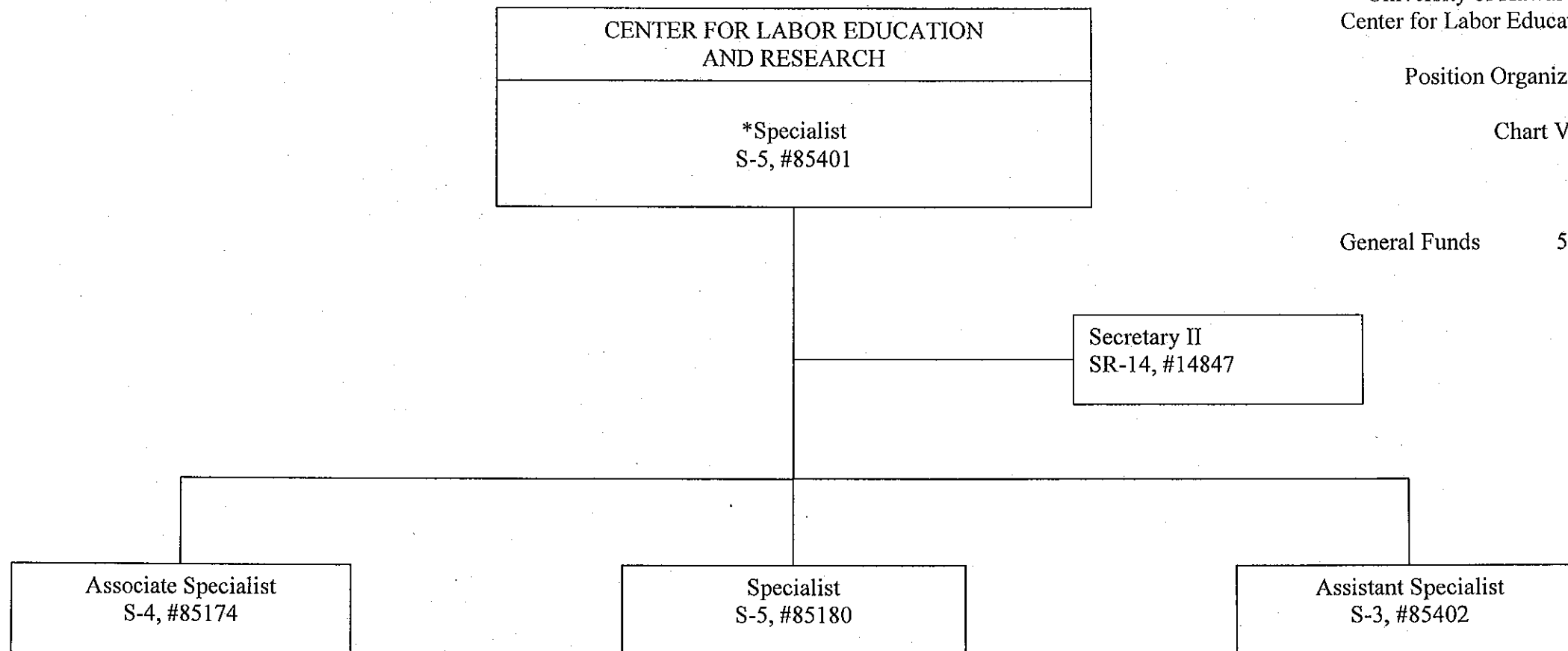
CHART UPDATED
DATE JUL - 1 2007

State of Hawai'i
University of Hawai'i
University of Hawai'i - West O'ahu
Center for Labor Education and Research

Position Organization Chart

Chart VII

General Funds 5.00



*Director

CHART UPDATED
DATE JUL - 1 2007