

STATE OF HAWAII  
UNIVERSITY OF HAWAII  
SYSTEMWIDE ADMINISTRATION  
VICE PRESIDENT FOR  
COMMUNITY COLLEGES

POSITION ORGANIZATION CHART

CHART I

^Excluded from position count

CHART UPDATED

JUL 01 2008

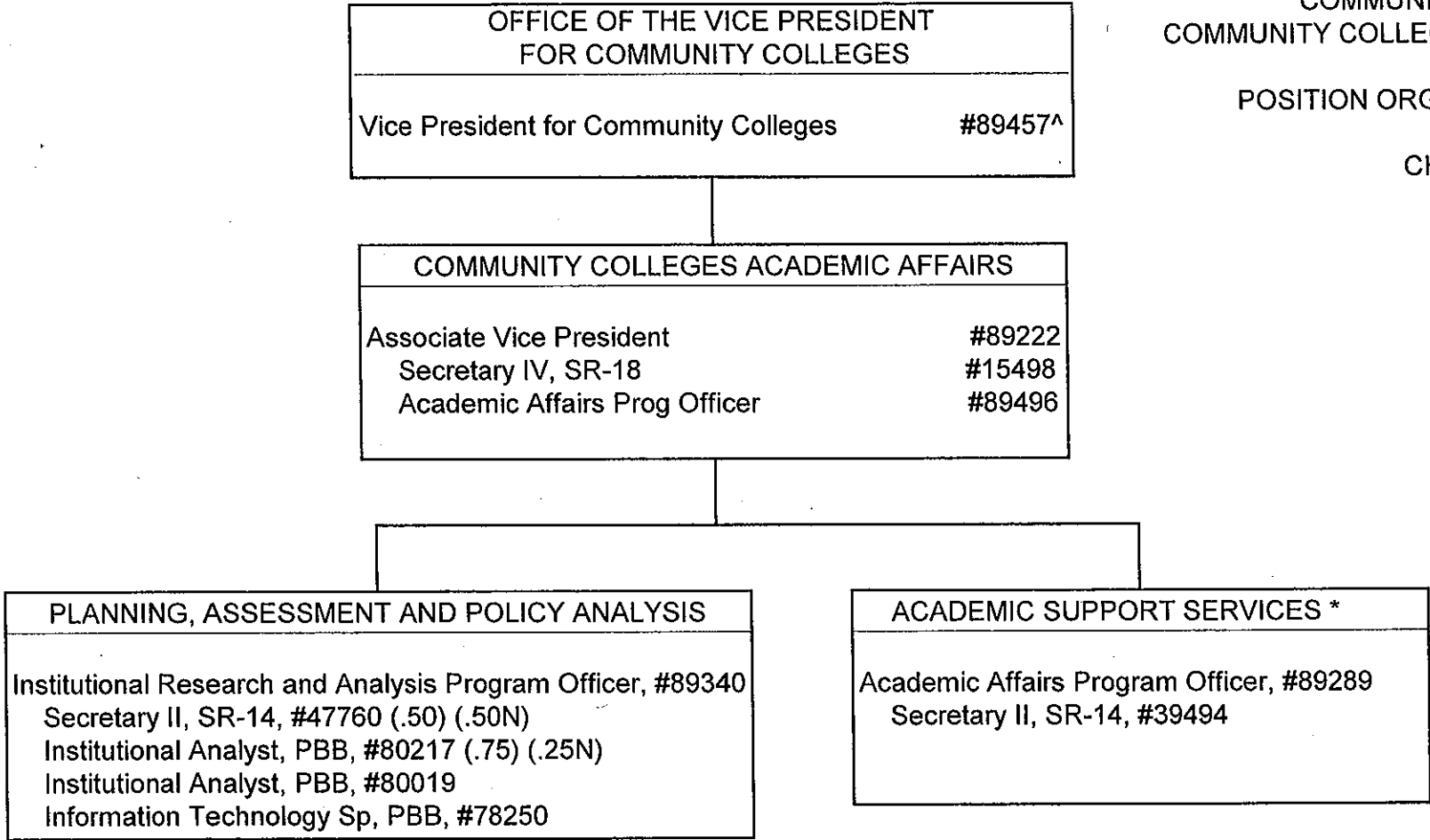
DATE

GENERAL FUND PERM 4.00

STATE OF HAWAII  
UNIVERSITY OF HAWAII  
SYSTEMWIDE ADMINISTRATION  
VICE PRESIDENT FOR  
COMMUNITY COLLEGES  
COMMUNITY COLLEGES ACADEMIC AFFAIRS

POSITION ORGANIZATION CHART

CHART II



^Excluded from position count

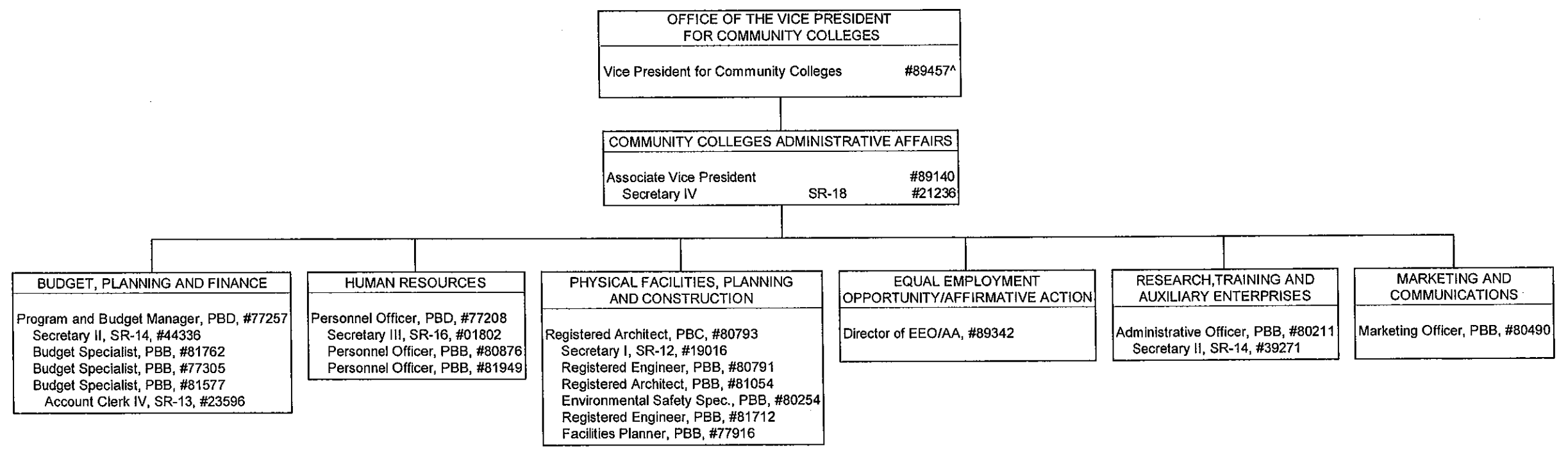
CHART UPDATED  
JUL 01 2008  
DATE \_\_\_\_\_

	PERM
GENERAL FUND	9.25
FEDERAL FUNDS	0.75

STATE OF HAWAII  
 UNIVERSITY OF HAWAII  
 SYSTEMWIDE ADMINISTRATION  
 VICE PRESIDENT FOR  
 COMMUNITY COLLEGES  
 COMMUNITY COLLEGES ADMINISTRATIVE AFFAIRS

POSITION ORGANIZATION CHART

CHART III



^Excluded from position count  
 @ 99705F and 99706F to be established pending reorganization

CHART UPDATED  
 JUL 01 2008  
 DATE \_\_\_\_\_