

STATE OF HAWAII
UNIVERSITY OF HAWAII AT MANOA
OFFICE OF THE CHANCELLOR
VICE CHANCELLOR FOR
ADMINISTRATION, FINANCE AND OPERATIONS
CAMPUS SERVICES
FACILITIES AND GROUNDS

CHART V-C2

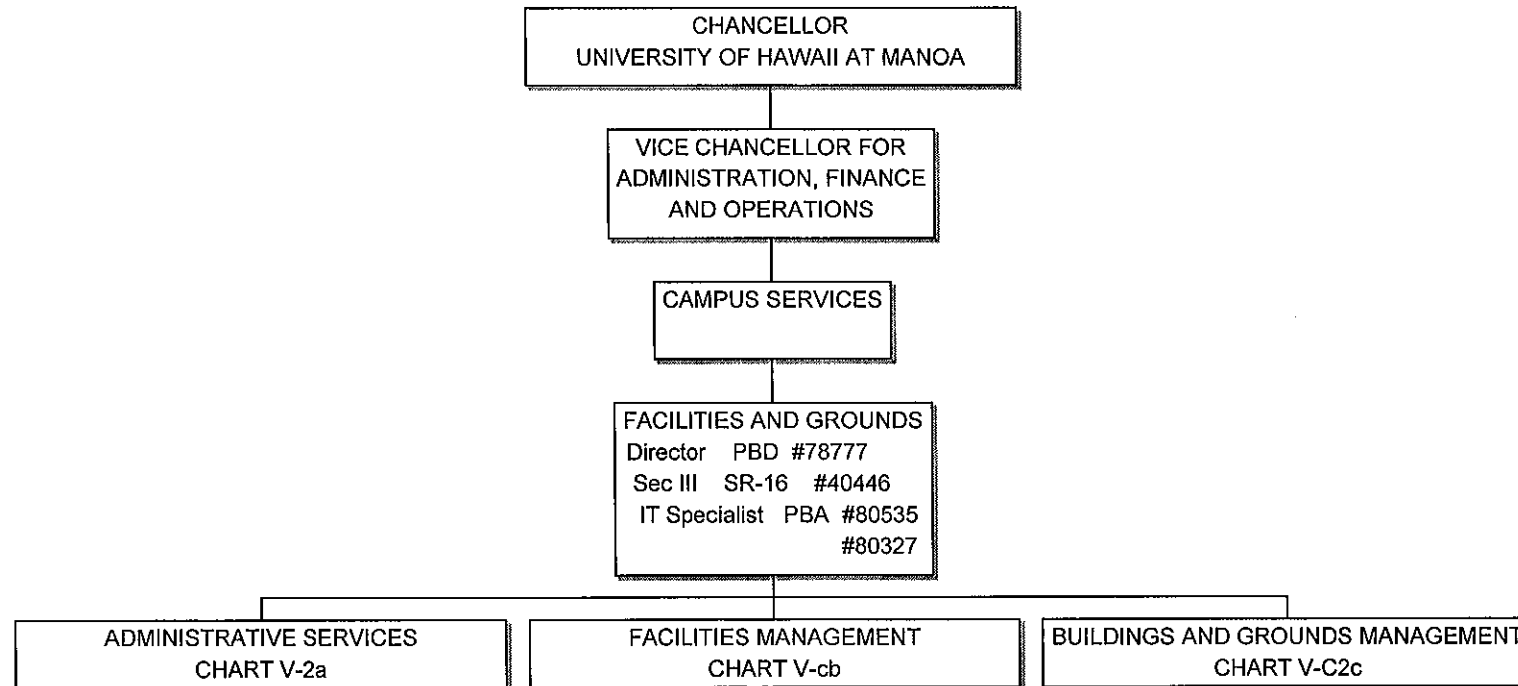
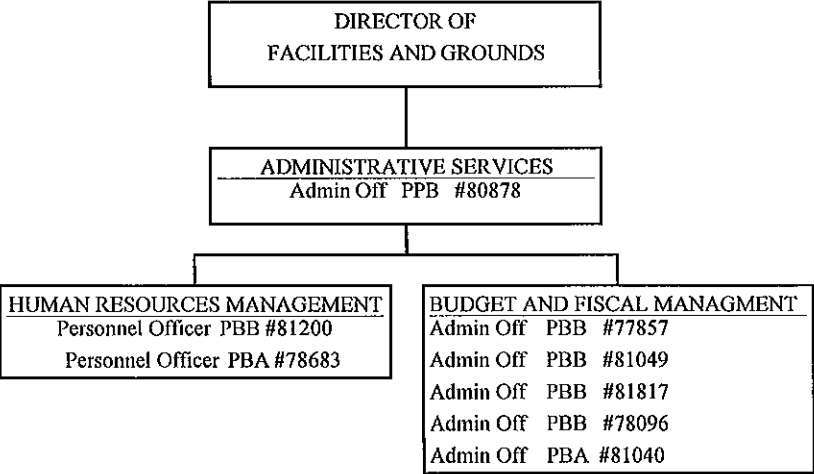


CHART UPDATED

DATE JUL 01 2008

General Fund: 5.00
Director E/M
**#89302 To be redescribed

STATE OF HAWAII
UNIVERSITY OF HAWAII AT MANOA
OFFICE OF THE CHANCELLOR
VICE CHANCELLOR FOR
ADMINISTRATION, FINANCE AND OPERATIONS
CAMPUS SERVICES
FACILITIES AND GROUNDS
CHART V-C2a

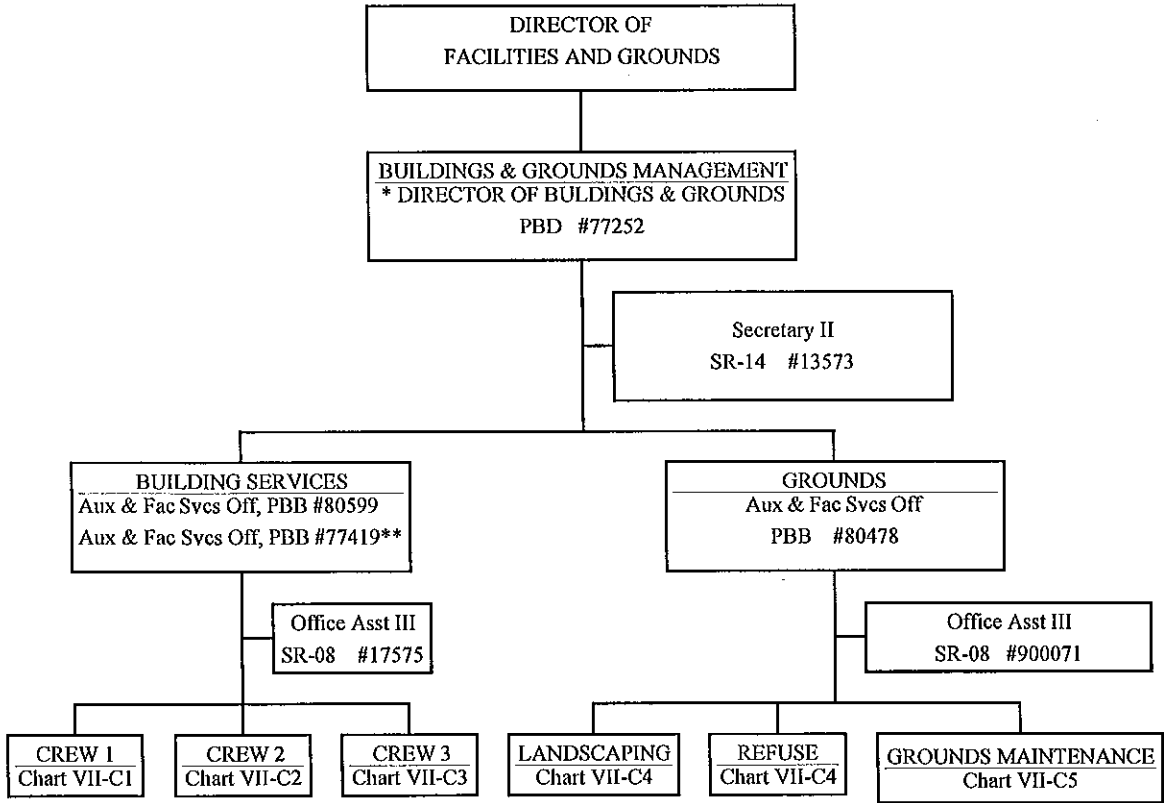


General Funds: 8.00

CHART UPDATED
JUL 01 2008
DATE

STATE OF HAWAII
UNIVERSITY OF HAWAII AT MANOA
OFFICE OF THE CHANCELLOR
VICE CHANCELLOR FOR
ADMINISTRATION, FINANCE AND OPERATIONS
CAMPUS SERVICES
FACILITIES AND GROUNDS
BUILDINGS AND GROUNDS MANAGEMENT

CHART V-C2c



General Funds 7.00

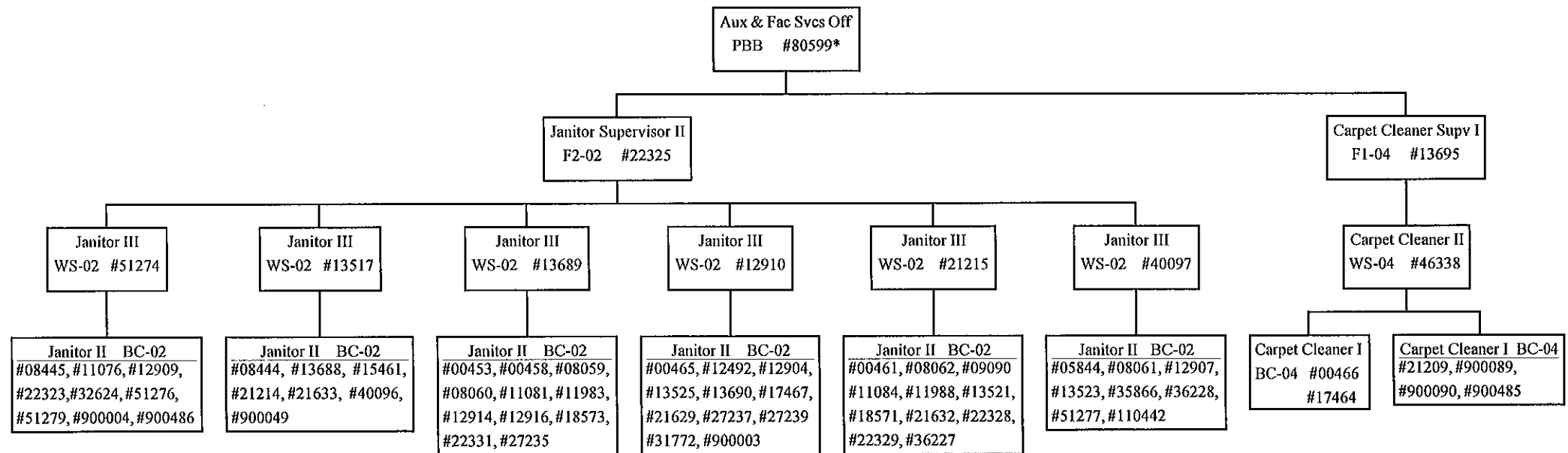
* Functional Code: Aux & Fac Svcs Off
** Assistant Building Svcs Mgr

CHART UPDATED
JUL 01 2008
DATE _____

STATE OF HAWAII
UNIVERSITY OF HAWAII AT MANOA
OFFICE OF THE CHANCELLOR
VICE CHANCELLOR FOR
ADMINISTRATION, FINANCE AND OPERATIONS
CAMPUS SERVICES
FACILITIES AND GROUNDS
BUILDINGS & GROUNDS MANAGEMENT

CREW 1

CHART V-C2c-1



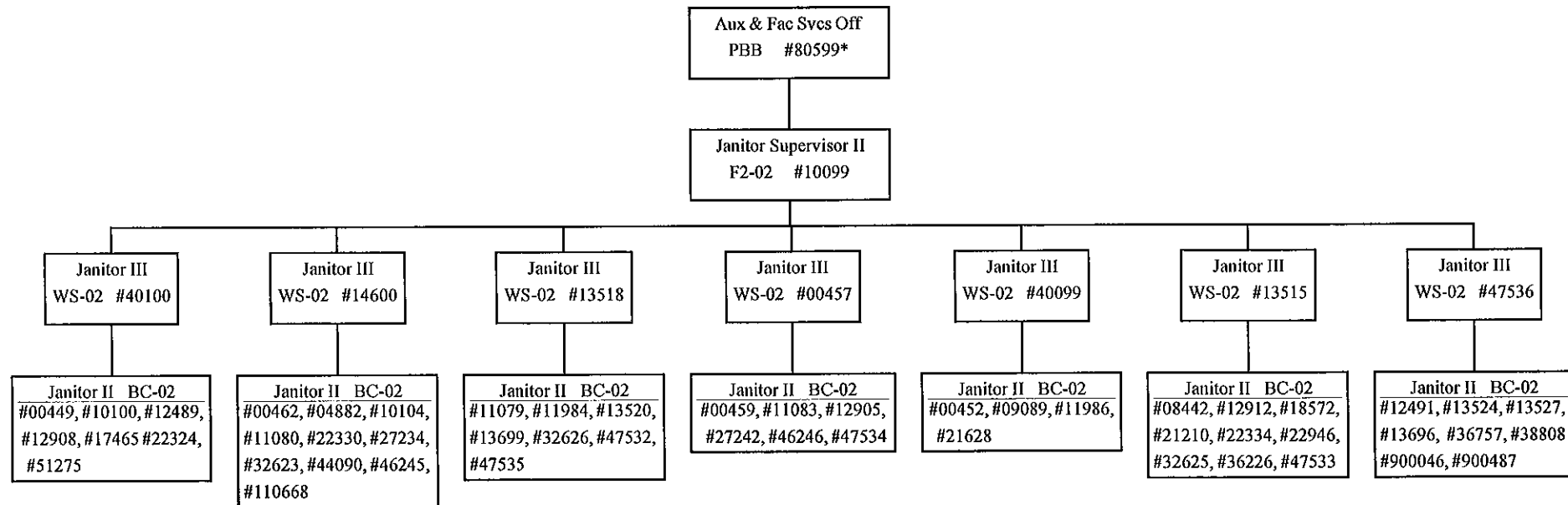
Abolished Carpet Cleaner positions:
#900091 (1.00) and #900092 (1.00); to be reallocated

General Funds 74.00
(*Position count not included on
this page)

CHART UPDATED
JUL 01 2008
DATE _____

STATE OF HAWAII
UNIVERSITY OF HAWAII AT MANOA
OFFICE OF THE CHANCELLOR
VICE CHANCELLOR FOR
ADMINISTRATION, FINANCE AND OPERATIONS
CAMPUS SERVICES
FACILITIES AND GROUNDS
BUILDINGS & GROUNDS MANAGEMENT

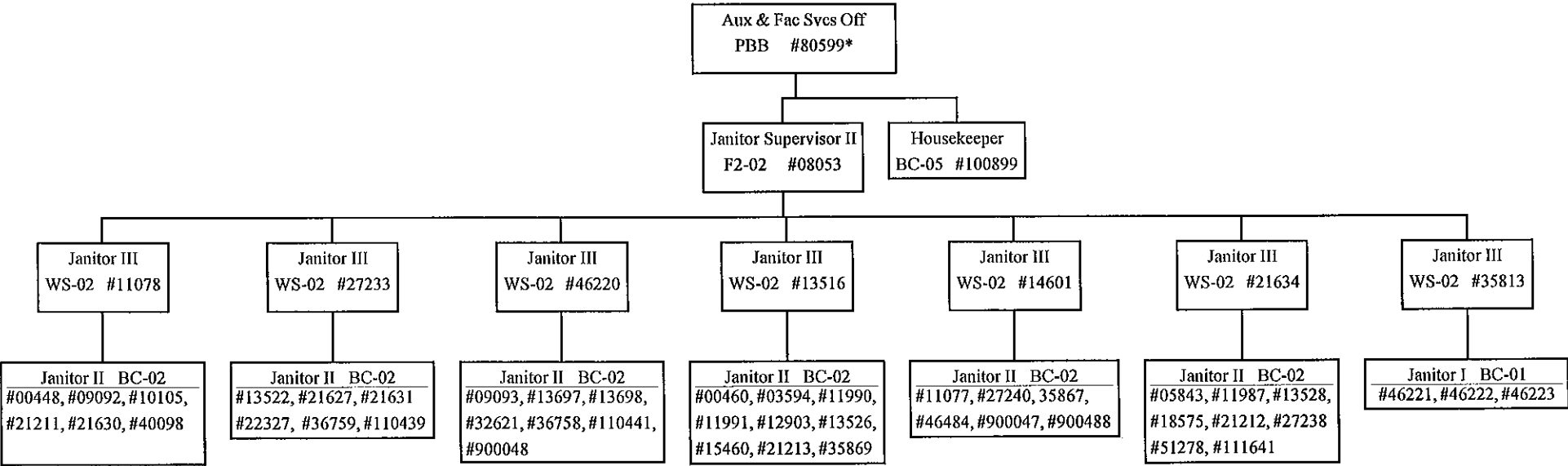
CHART V-C2c-2



General Funds: 59.00
(*Position count not included on this page)

CHART UPDATED
JUL 01 2008
DATE _____

CHART V-C2c-3

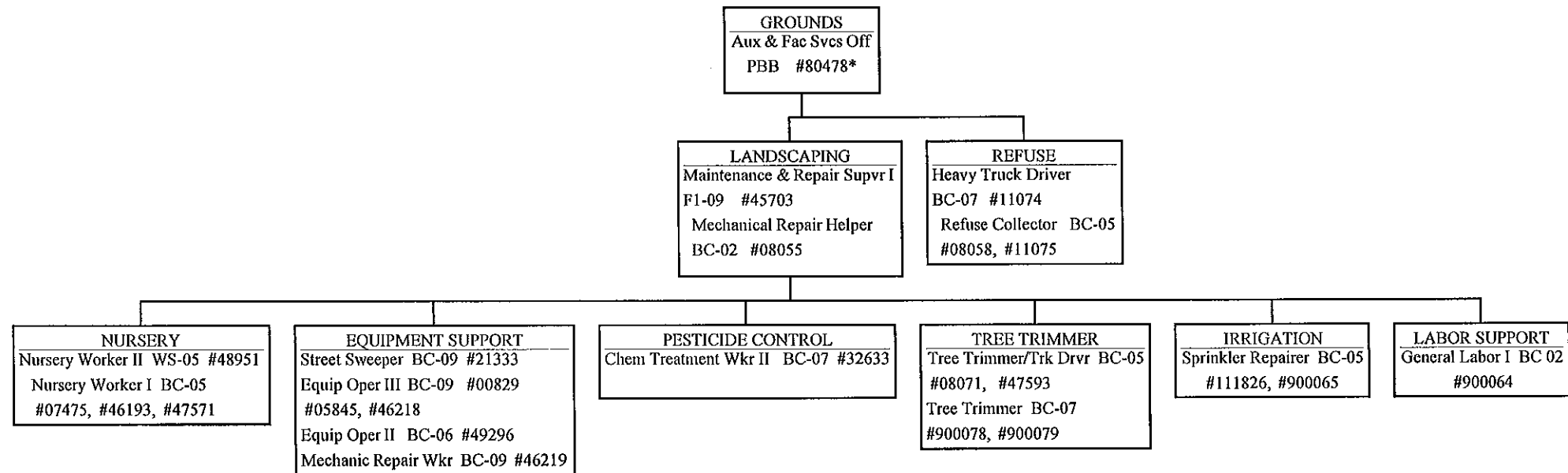


General Funds: 54.00
(*Position count not included on this page)

CHART UPDATED
JUL 01 2008
DATE _____

STATE OF HAWAII
 UNIVERSITY OF HAWAII AT MANOA
 OFFICE OF THE CHANCELLOR
 VICE CHANCELLOR FOR
 ADMINISTRATION, FINANCE AND OPERATIONS
 CAMPUS SERVICES
 FACILITIES AND GROUNDS
 BUILDINGS AND GROUNDS MANAGEMENT

CHART V-C2c-4

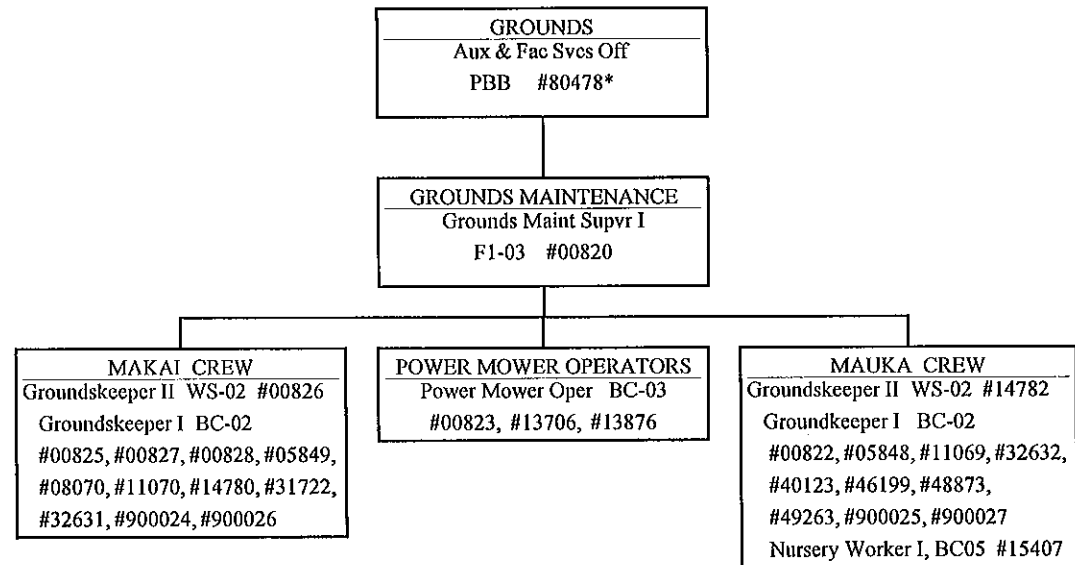


General Funds 23.00
 (* Position count not included on this page)

CHART UPDATED
 DATE JUL 01 2008

STATE OF HAWAII
 UNIVERSITY OF HAWAII AT MANOA
 OFFICE OF THE CHANCELLOR
 VICE CHANCELLOR FOR
 ADMINISTRATION, FINANCE AND OPERATIONS
 CAMPUS SERVICES
 FACILITIES AND GROUNDS
 BUILDINGS & GROUNDS MANAGEMENT

CHART V-C2c-5



General Funds 28.00
 (*Position count not included on this page)

CHART UPDATED
 JUL 01 2008
 DATE _____

STATE OF HAWAII
UNIVERSITY OF HAWAII AT MANOA
OFFICE OF THE CHANCELLOR
VICE CHANCELLOR FOR
ADMINISTRATION, FINANCE AND OPERATIONS
CAMPUS SERVICES
FACILITIES AND GROUNDS
FACILITIES MANAGEMENT

CHART V-C2b

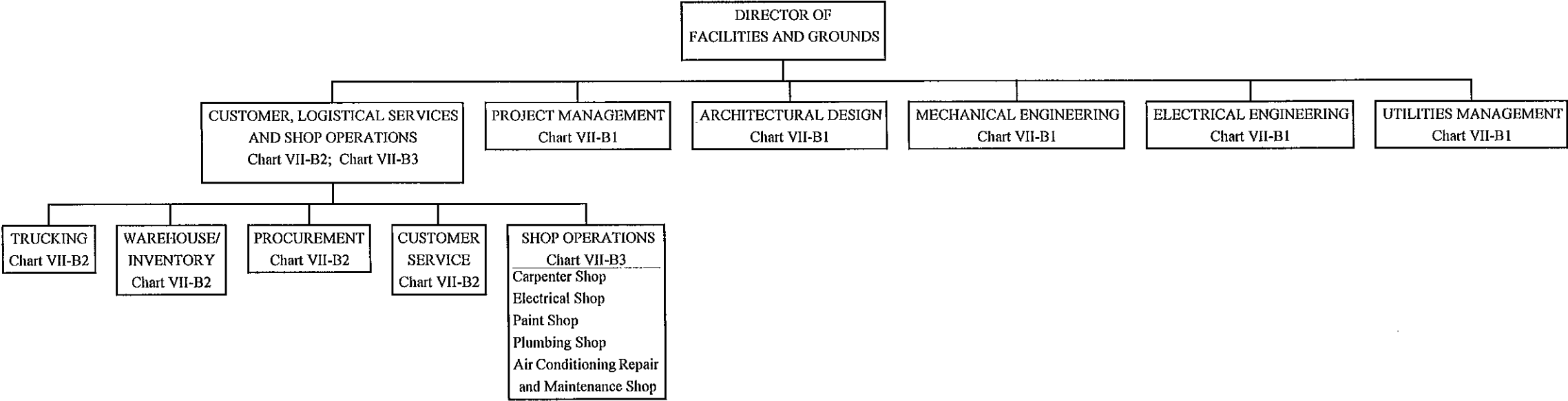


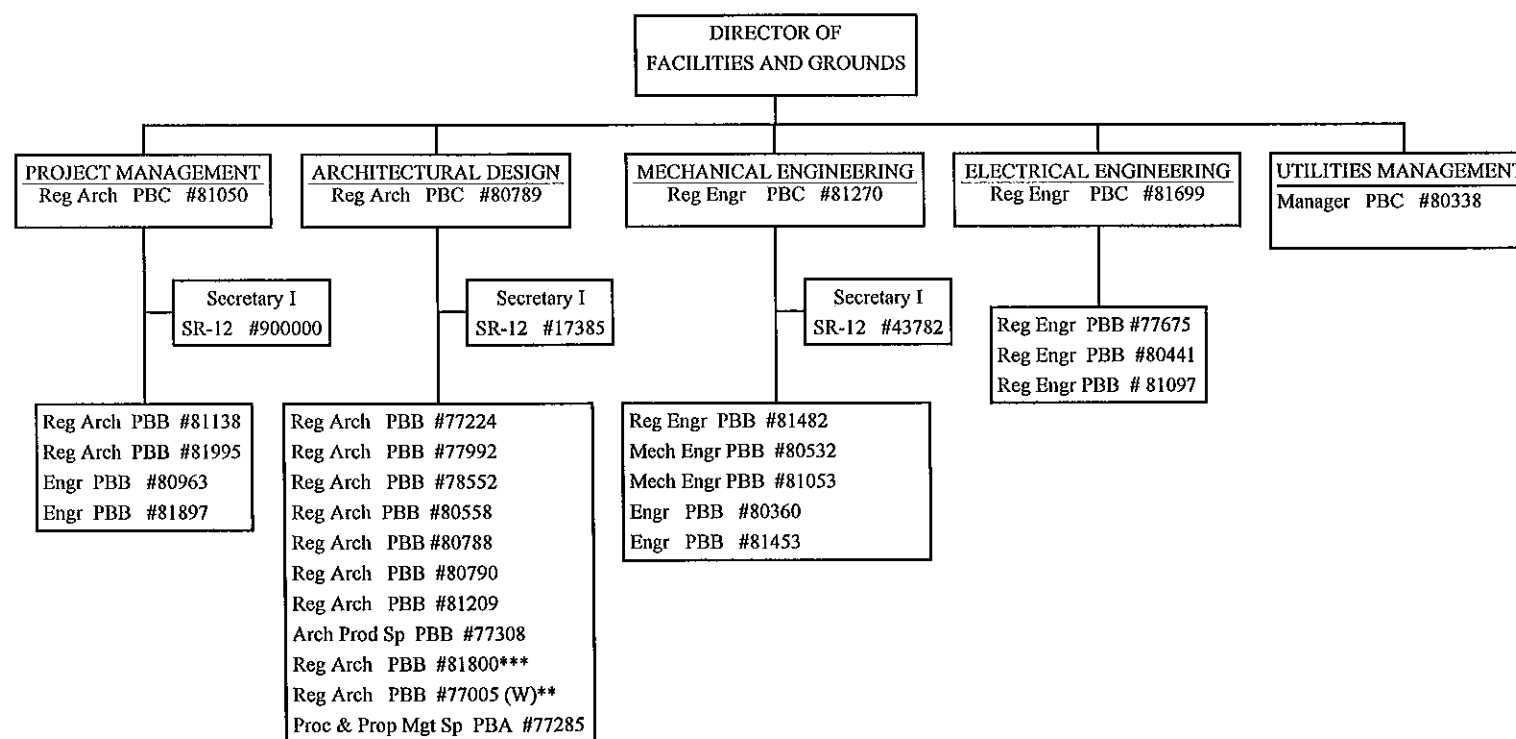
CHART UPDATED

JUL 01 2008

DATE _____

STATE OF HAWAII
UNIVERSITY OF HAWAII AT MANOA
OFFICE OF THE CHANCELLOR
VICE CHANCELLOR FOR
ADMINISTRATION, FINANCE AND OPERATIONS
CAMPUS SERVICES
FACILITIES AND GROUNDS
FACILITIES MANAGEMENT

CHART V-C2b-1



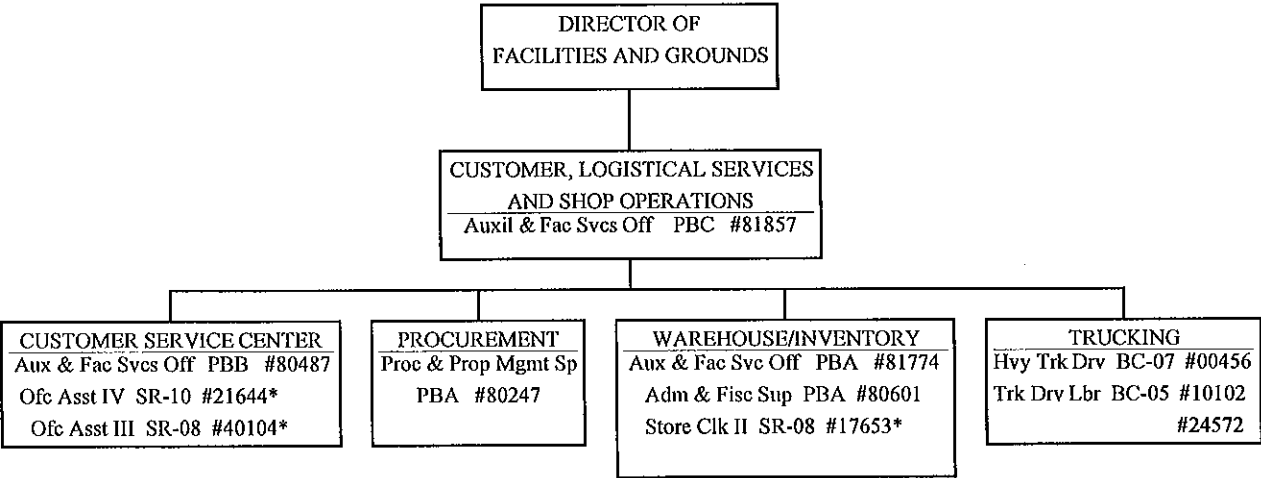
General Funds: 29.00
(W) Revolving Funds 1.00 (**Not
included in our position count, position belongs
to and funded by Student Hsg.)

***1.00 Not included in our position count,
position belongs to and funded by EEO.

CHART UPDATED
DATE JUL 01 2008

STATE OF HAWAII
UNIVERSITY OF HAWAII AT MANOA
OFFICE OF THE CHANCELLOR
VICE CHANCELLOR FOR
ADMINISTRATION, FINANCE AND OPERATIONS
CAMPUS SERVICES
FACILITIES AND GROUNDS
FACILITIES MANAGEMENT

CHART V-C2b-2



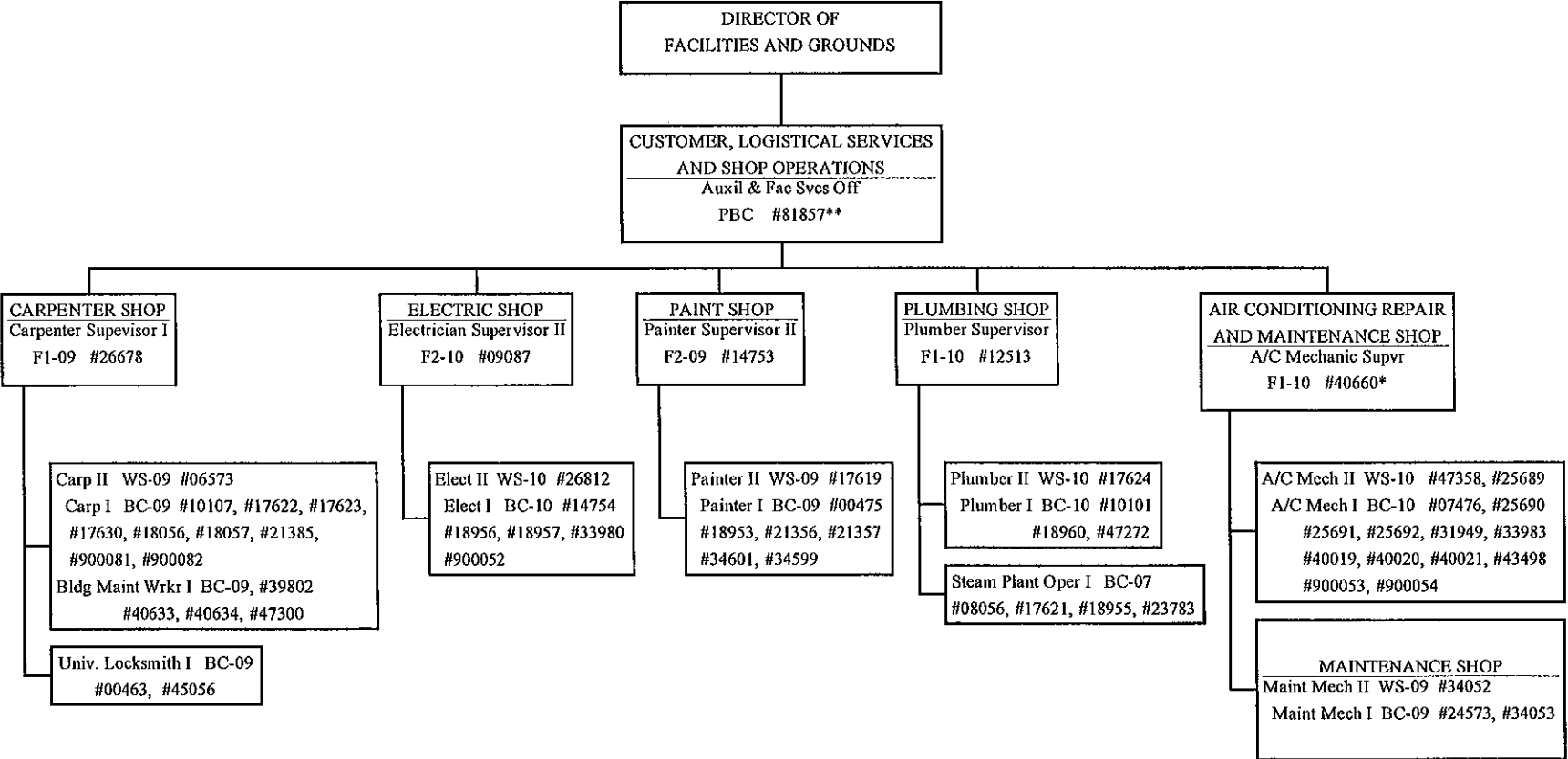
*To be resdescribed

General Funds 11.00

CHART UPDATED
DATE JUL 01 2008

STATE OF HAWAII
UNIVERSITY OF HAWAII AT MANOA
OFFICE OF THE CHANCELLOR
VICE CHANCELLOR FOR
ADMINISTRATION, FINANCE AND OPERATIONS
CAMPUS SERVICES
FACILITIES AND GROUNDS
FACILITIES MANAGEMENT

CHART V-C2b-3



*To be redescribed

General Funds 59.00
**Position count not included on this page.