

State of Hawai'i
University of Hawai'i
University of Hawai'i at Mānoa
Hawai'inuiākea School of Hawaiian Knowledge
Organizational Chart
Chart I

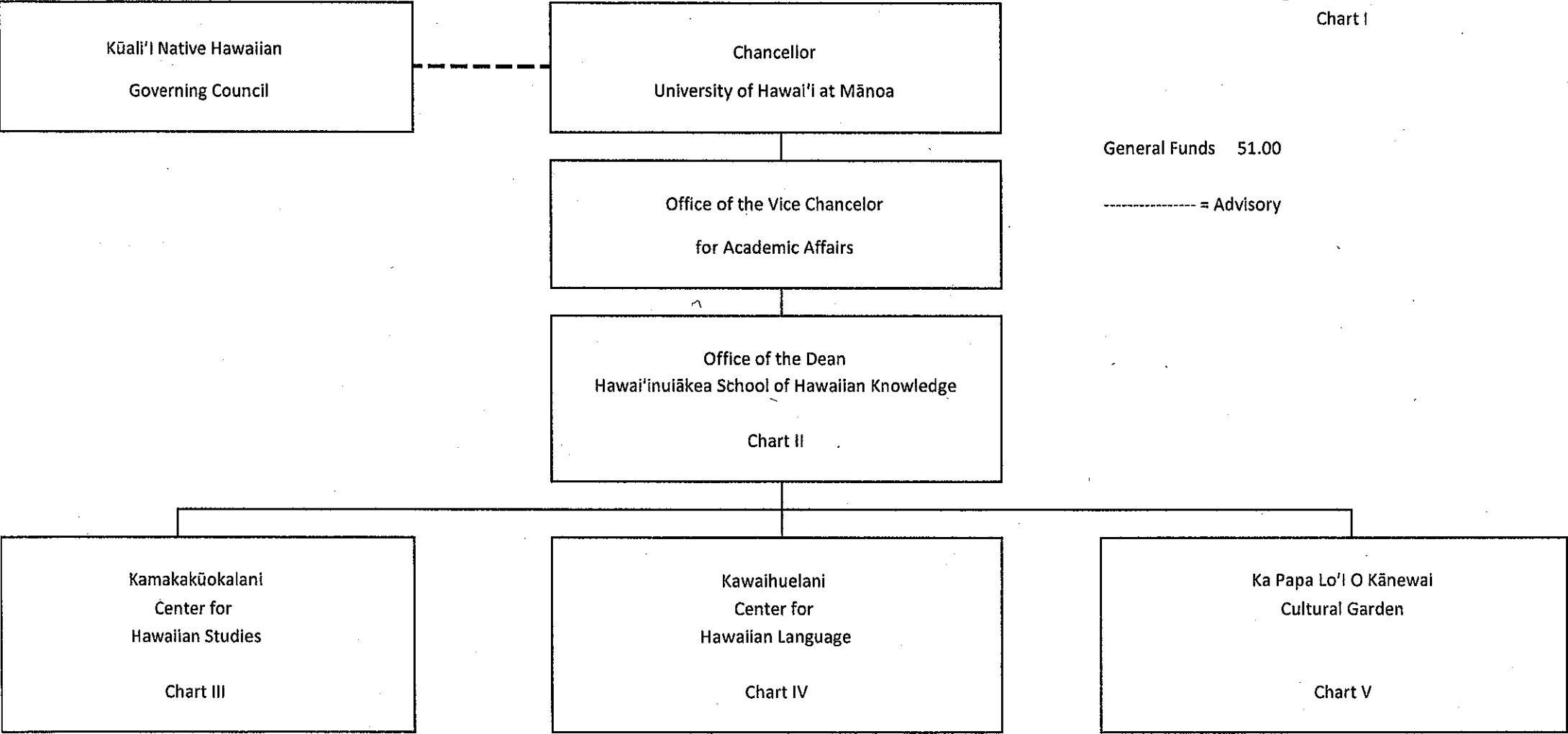
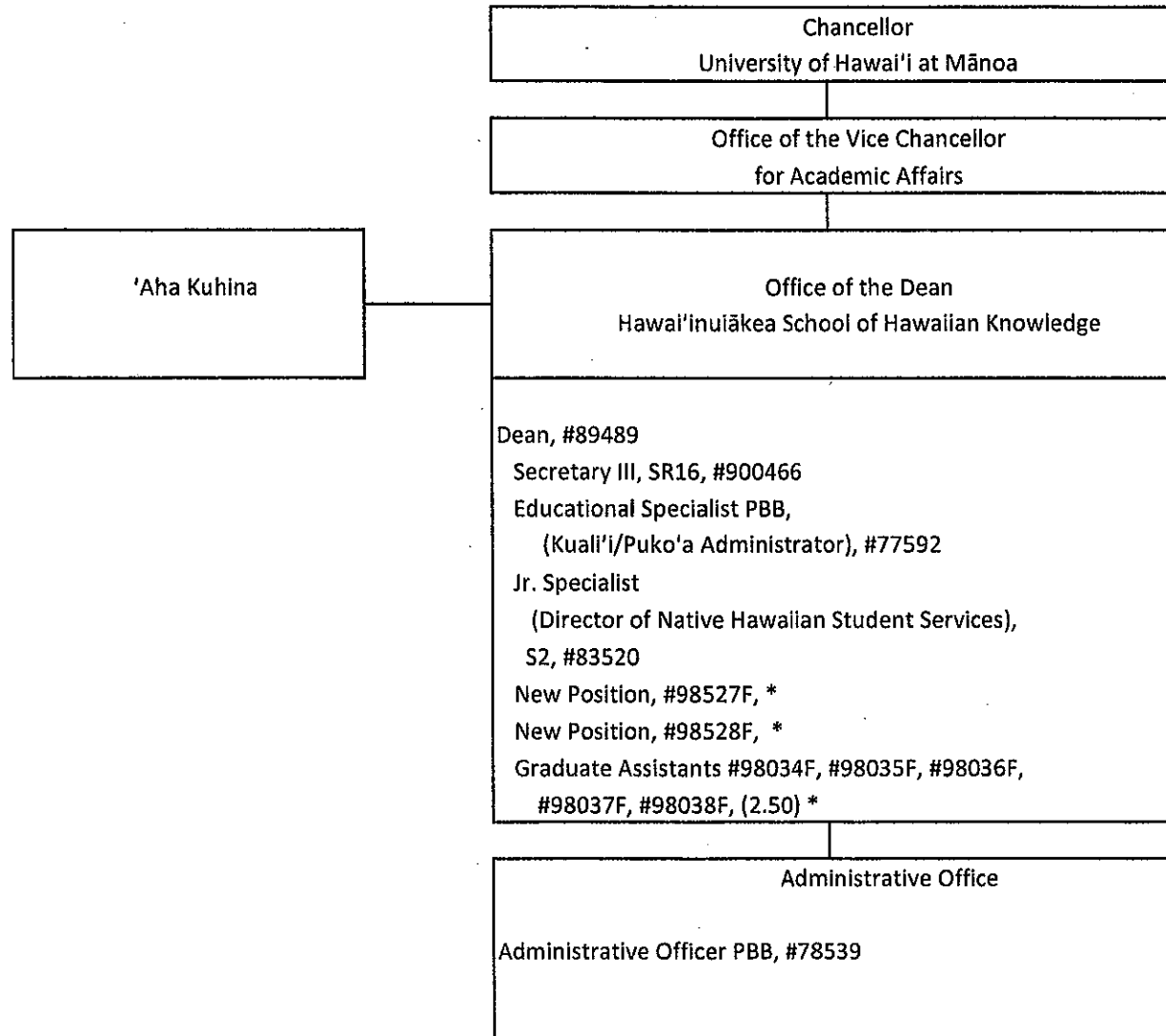


CHART UPDATED

DATE JUL 01 2008

State of Hawai'i
University of Hawai'i
University of Hawai'i at Mānoa
Hawai'inuiākea School of Hawaiian Knowledge
Dean's Office
Organizational Chart
Chart II

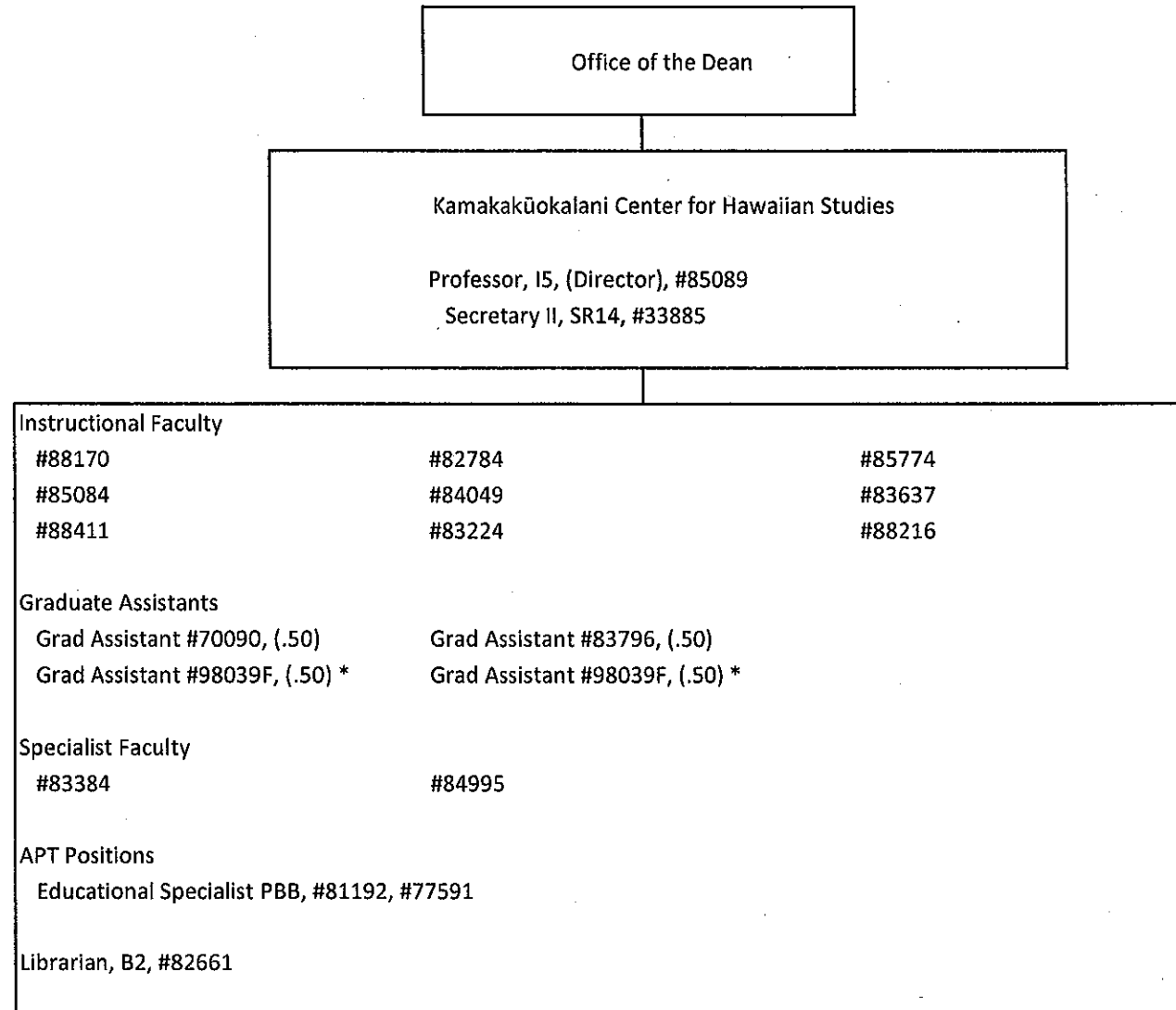


General Funds 9.50

*new positions from biennium, position number
and classification to be determined.

CHART UPDATED
DATE JUL 01 2008

State of Hawai'i
University of Hawai'i
University of Hawai'i at Mānoa
Hawai'i inuiākea School of Hawaiian Knowledge
Kamakakūokalani Center for Hawaiian Studies
Organizational Chart
Chart III

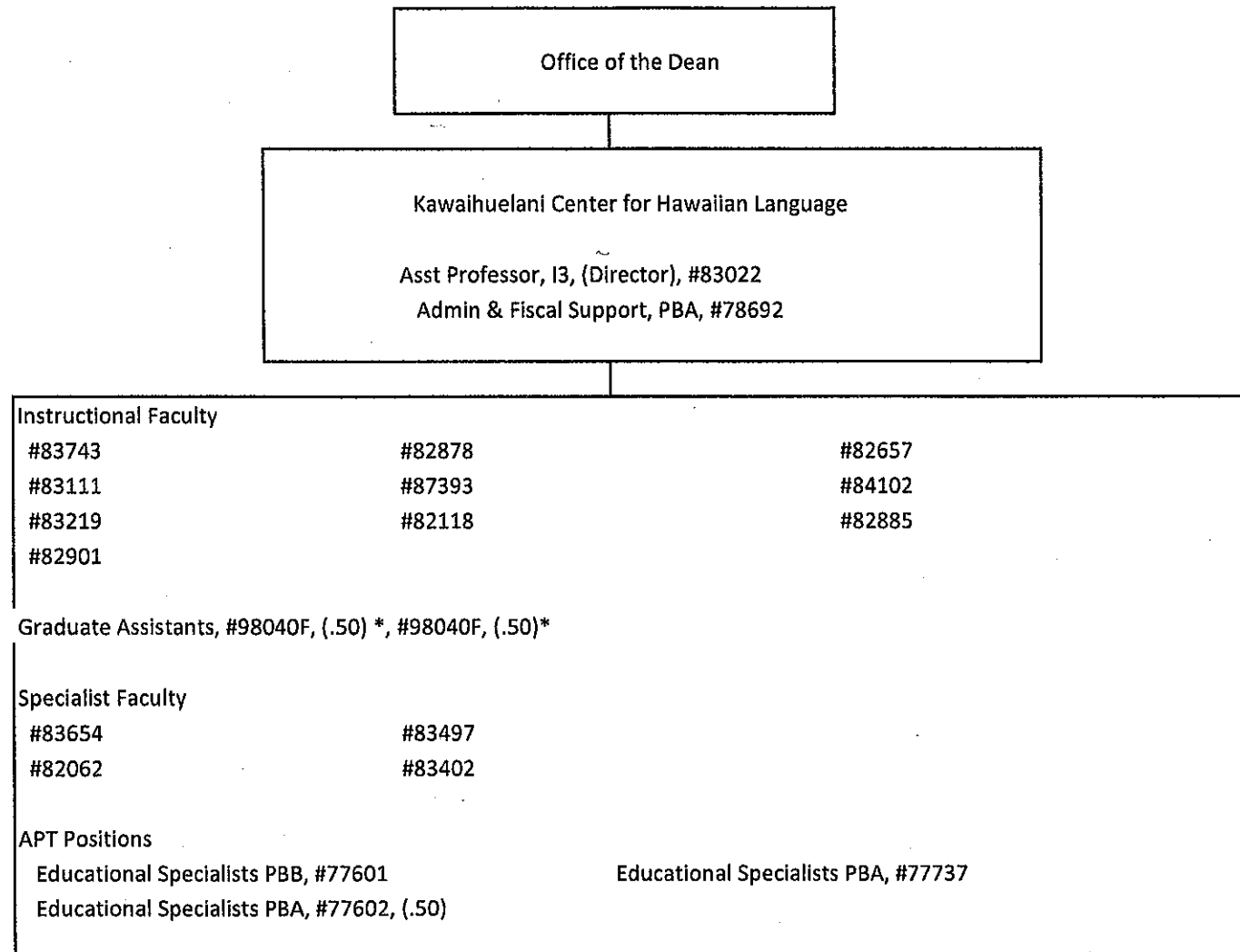


General Funds 18.00

*new position from biennium, position number
and classification to be determined.

CHART UPDATED
DATE JUL 01 2008

State of Hawai'i
University of Hawai'i
University of Hawai'i at Mānoa
Hawai'inuiākea School of Hawaiian Knowledge
Kawaihuelani Center for Hawaiian Language
Organizational Chart
Chart IV

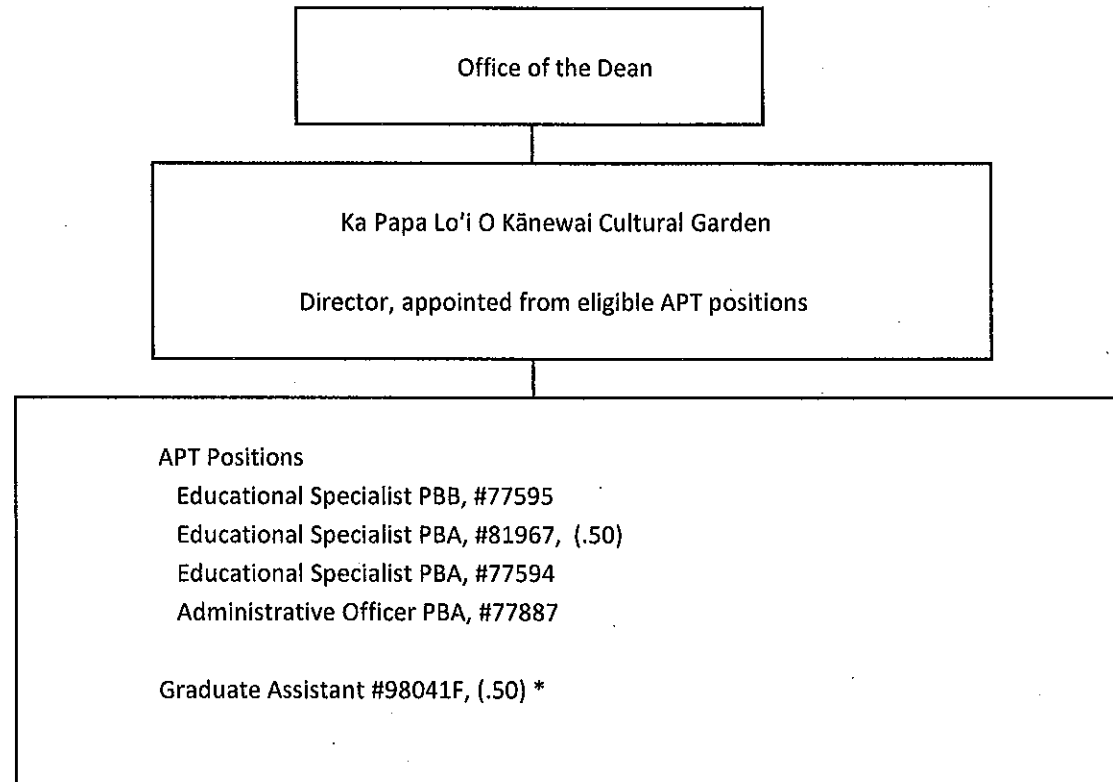


General Funds 19.50

*new position from biennium, position number
and classification to be determined.

CHART UPDATED
DATE JUL 01 2008

State of Hawai'i
University of Hawai'i
University of Hawai'i at Mānoa
Hawai'iinuiākea School of Hawaiian Knowledge
Ka Papa Lo'i O Kānewai Cultural Garden
Organizational Chart
Chart V



General Funds 4.00

*new position from biennium, position # and
classification to be determined.

CHART UPDATED
DATE JUL 01 2008