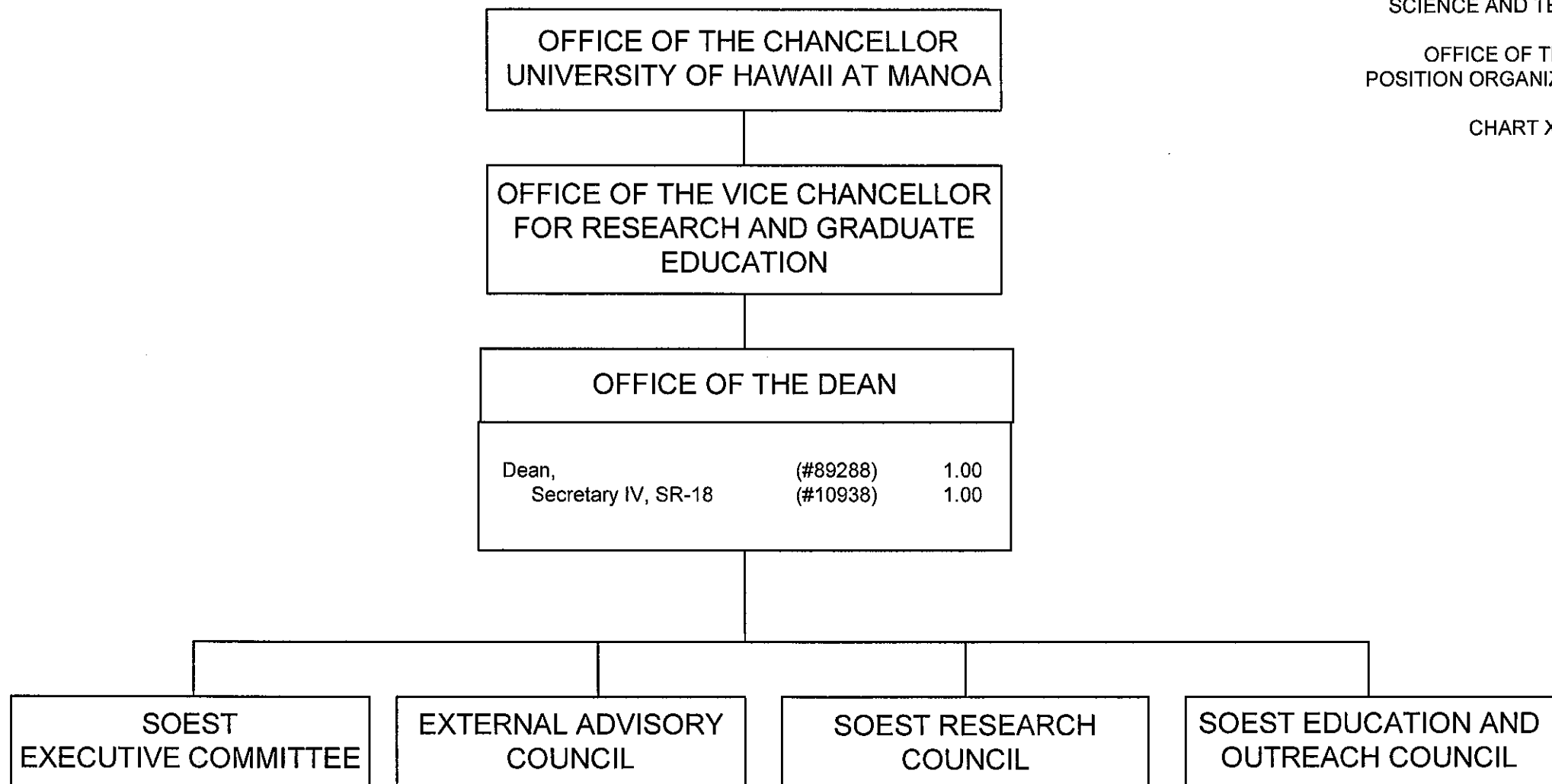


GENERAL FUNDS 206.25

CHART UPDATED

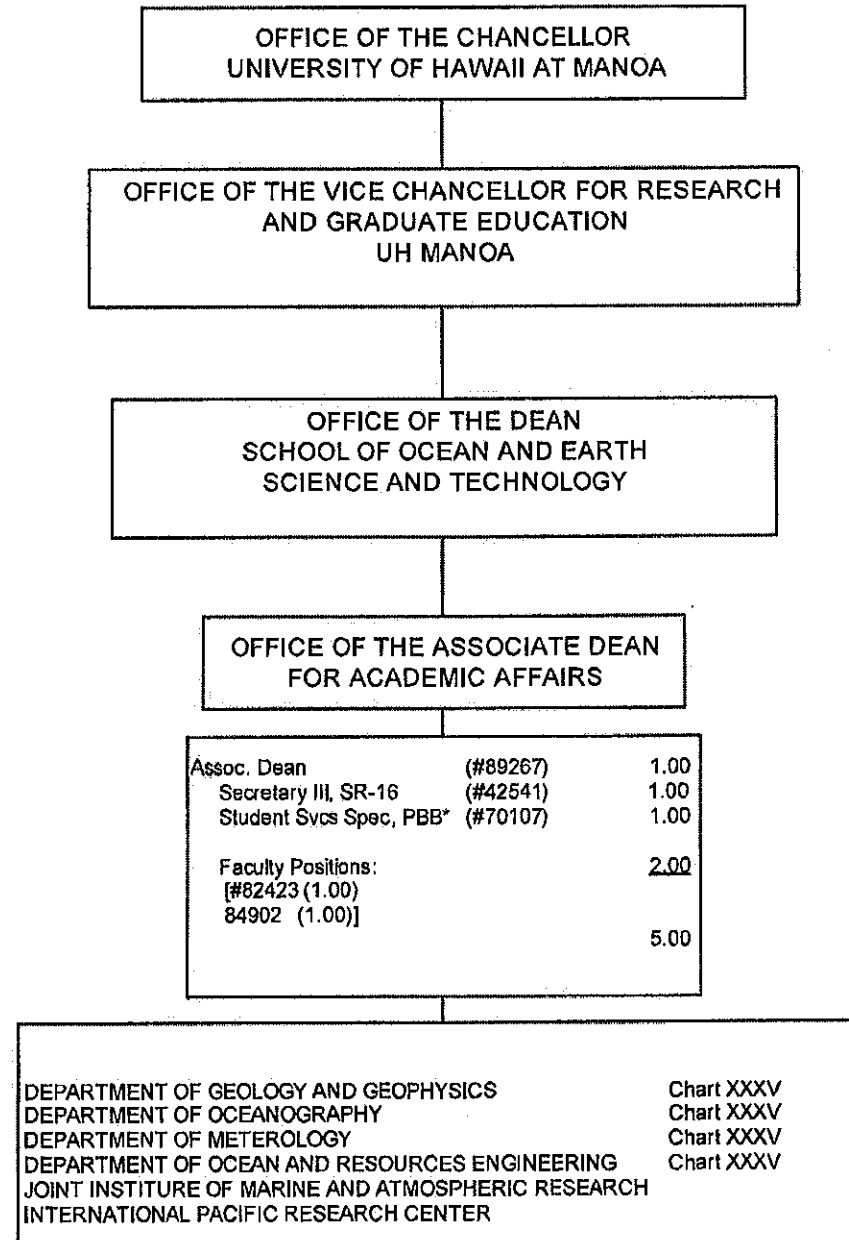
JUL 01 2008

DATE



APPROVED:

*Brian Taylor*  
for Brian Taylor, Dean 07/01/2008



STATE OF HAWAII  
UNIVERSITY OF HAWAII  
UNIVERSITY OF HAWAII AT MANOA  
SCHOOL OF OCEAN AND EARTH  
SCIENCE AND TECHNOLOGY

OFFICE OF THE DEAN  
POSITION ORGANIZATION CHART

CHART XXXIII

\*Position being classified

CHART UPDATED

DATE JUL 01 2008

GENERAL FUNDS 5.00

APPROVED:

*Brian Taylor*  
Brian Taylor, Dean 07-01-2008

OFFICE OF THE DEAN  
SCHOOL OF OCEAN AND EARTH  
SCIENCE AND TECHNOLOGY

OFFICE OF THE DIRECTOR OF ADMINISTRATION

Director of Administrative Services, (89291) 1.00

STATE OF HAWAII  
UNIVERSITY OF HAWAII  
UNIVERSITY OF HAWAII AT MANOA  
SCHOOL OF OCEAN AND EARTH  
SCIENCE AND TECHNOLOGY

OFFICE OF THE DEAN  
POSITION ORGANIZATION CHART

CHART XXXIV

Admin & Fiscal Support PBA (#78757) 1.00

PROGRAM AND BUDGET OFFICE

Admin. Off., PBB\*\* (#80199) 1.00

ANALYTICAL SUPPORT FACILITY

Extramurally  
Funded

PUBLICATIONS FACILITY

Res. Pubs. Mgr. PBB	(#80098)	1.00
Graphic Artist, PBB	(#80689)	1.00

PERSONNEL OFFICE

Personnel Off. PBB	(#80943)	1.00
Personnel Off. PBB	(#80769)	1.00
Personnel Off. PBA	(#80562)	1.00

RESEARCH COMPUTER FACILITY

Extramurally  
Funded

ENGINEERING SUPPORT FACILITY

Elec. Eng., PBC	(#80741)	0.50
Elec. Eng., PBB	(#80172)	0.50
Elec. Tech., PBB	(#80334)	0.50
Scien. Inst. Tech., PBB	(#80717)	1.00
Elec. Tech., PBB	(#80752)	1.00
Eng. Lab Tech, WB-13	(#15505)	1.00

FINANCIAL MANAGEMENT SYSTEMS OFFICE

Fis. Actng. Spec., PBB	(#81351)	1.00
Admin. Off., PBC	(#78079)	1.00
Admin. Off., PBB	(#81924)	1.00
Admin. Off., PBB	(#81804)	1.00
Admin. Off., PBB	(#80955)	1.00
Admin. Off., PBB	(#80958)	1.00

UNIVERSITY MARINE CENTER  
SHIP OPERATIONS

Extramurally  
Funded

\*\*To be reclassified

CHART UPDATED

DATE JUL 01 2008

GENERAL FUNDS 18.50

APPROVED:

Brian Taylor  
Brian Taylor, Dean 07-01-2008

STATE OF HAWAII  
UNIVERSITY OF HAWAII  
UNIVERSITY OF HAWAII AT MANOA  
SCHOOL OF OCEAN AND EARTH  
SCIENCE AND TECHNOLOGY

DEPARTMENTS  
POSITION ORGANIZATION CHART  
CHART XXXV

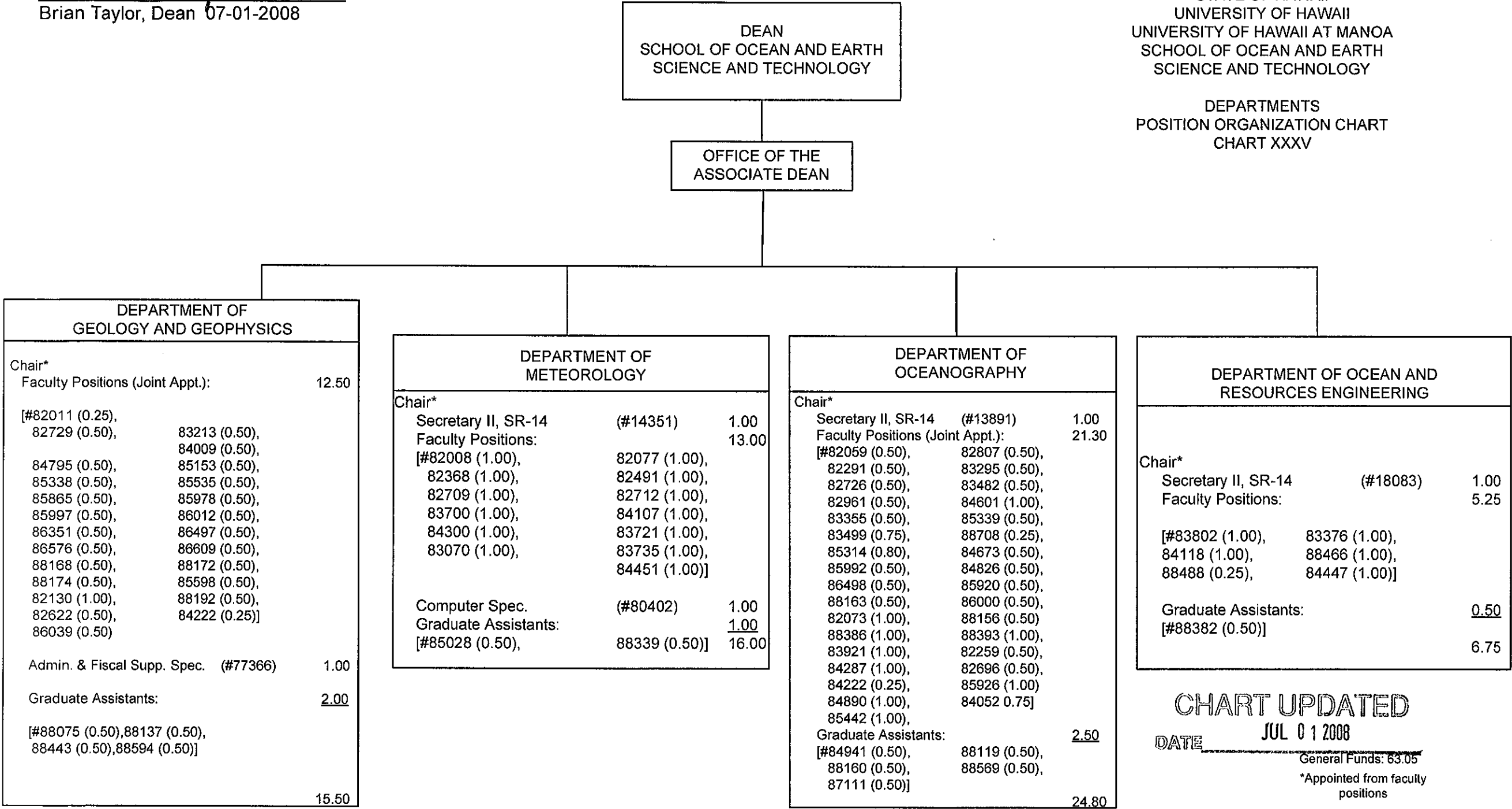


CHART UPDATED  
JUL 01 2008  
DATE \_\_\_\_\_  
General Funds: 63.05  
\*Appointed from faculty positions

APPROVED:

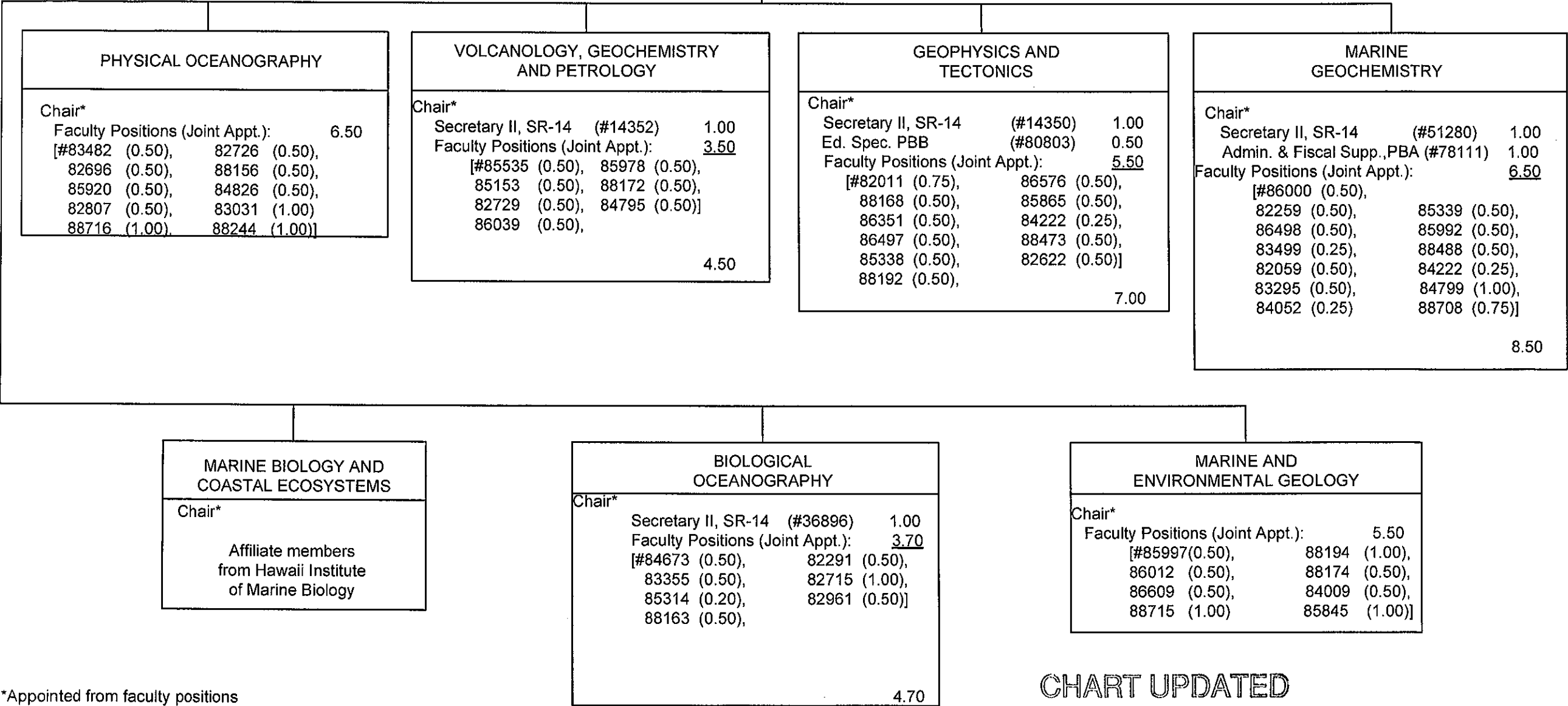
Brian Taylor

Brian Taylor, Dean 07/01-2008

DEAN  
SCHOOL OF OCEAN AND EARTH  
SCIENCE AND TECHNOLOGY

ASSOCIATE DEAN FOR RESEARCH

STATE OF HAWAII  
UNIVERSITY OF HAWAII  
UNIVERSITY OF HAWAII AT MANOA  
SCHOOL OF OCEAN AND EARTH  
SCIENCE AND TECHNOLOGY  
RESEARCH DIVISIONS  
POSITION ORGANIZATION CHART  
CHART XXXVI



\*Appointed from faculty positions

STATE OF HAWAII  
UNIVERSITY OF HAWAII  
UNIVERSITY OF HAWAII AT MANOA  
SCHOOL OF OCEAN AND EARTH  
SCIENCE AND TECHNOLOGY

HAWAII INSTITUTE OF MARINE BIOLOGY  
POSITION ORGANIZATION CHART

CHART XXXVII

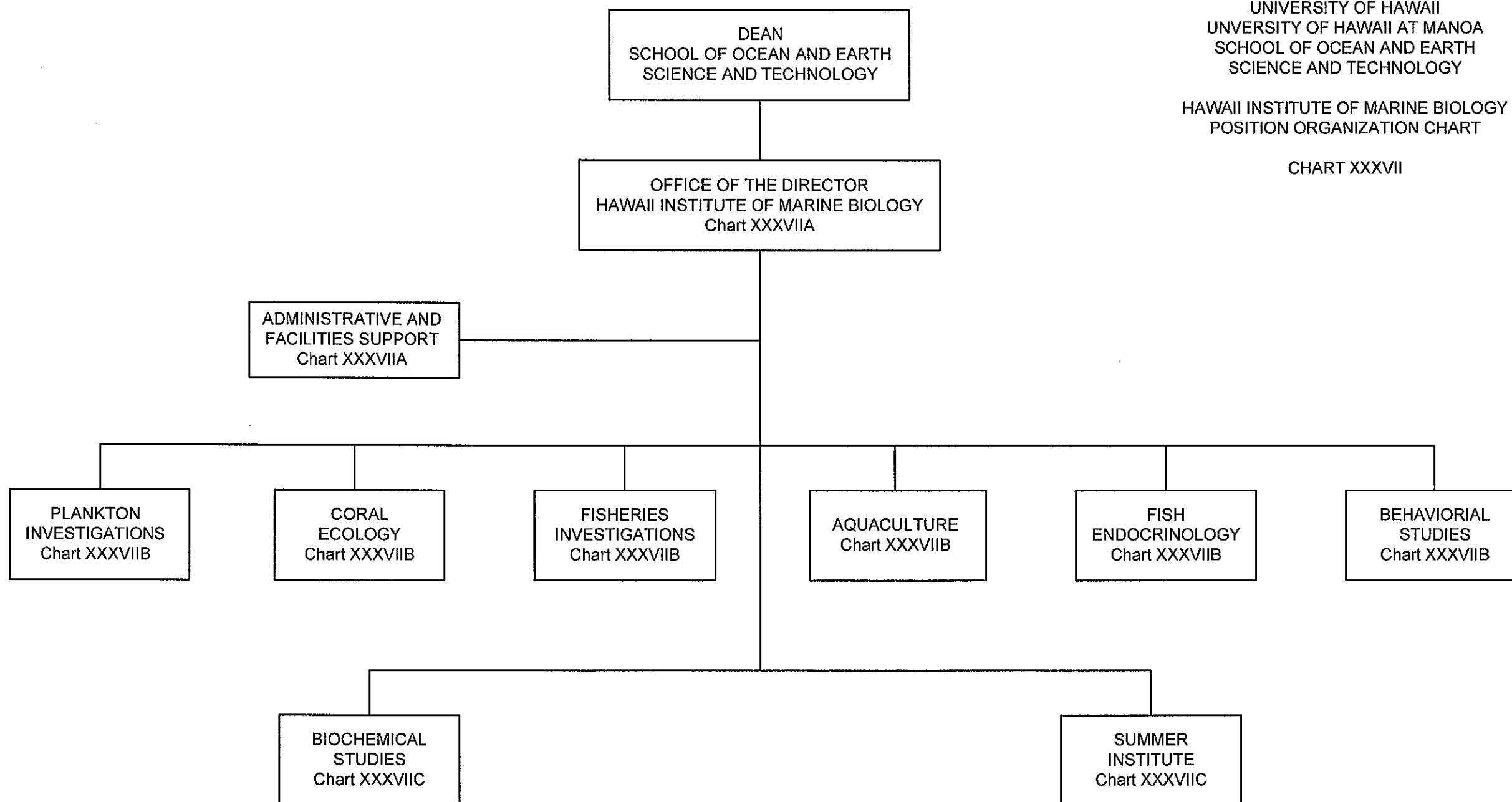

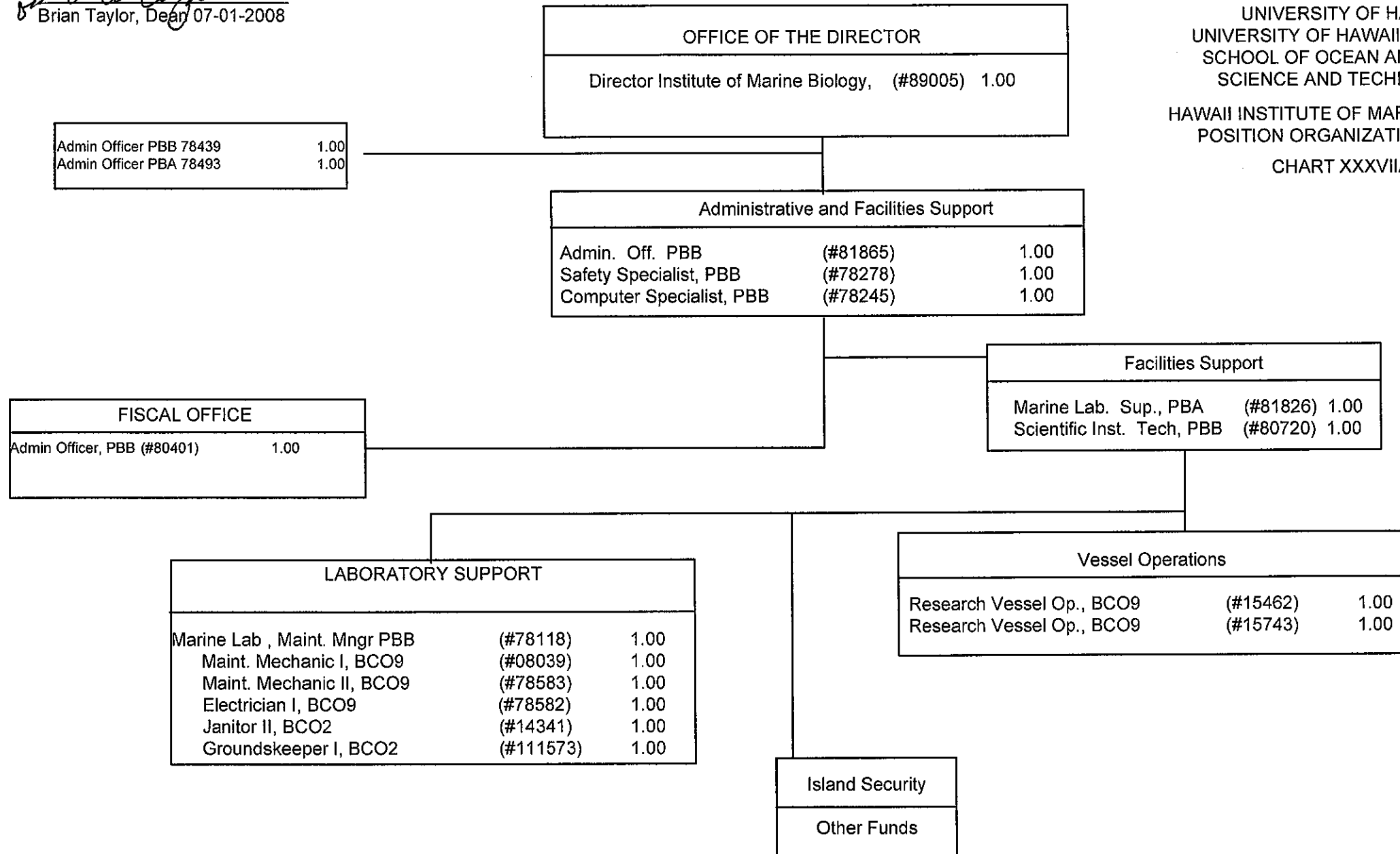


CHART UPDATED  
JUL 01 2008  
DATE \_\_\_\_\_

APPROVED:

  
Brian Taylor, Dean 07-01-2008

STATE OF HAWAII  
UNIVERSITY OF HAWAII  
UNIVERSITY OF HAWAII AT MANOA  
SCHOOL OF OCEAN AND EARTH  
SCIENCE AND TECHNOLOGY  
HAWAII INSTITUTE OF MARINE BIOLOGY  
POSITION ORGANIZATION CHART  
CHART XXXVIIIA

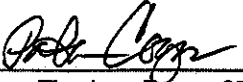


General Funds 17.00

CHART UPDATED  
JUL 01 2008  
DATE \_\_\_\_\_



APPROVED:

  
Brian Taylor, Dean 07-01-2008

OFFICE OF THE DIRECTOR

Faculty Position	(#88730)	1.00
Assistant Specialist S3	(#86035)	1.00
Educ Specialist, PBB	(#78244)	1.00

STATE OF HAWAII  
UNIVERSITY OF HAWAII  
UNIVERSITY OF HAWAII AT MANOA  
SCHOOL OF OCEAN AND EARTH  
SCIENCE AND TECHNOLOGY  
HAWAII INSTITUTE OF MARINE BIOLOGY  
POSITION ORGANIZATION CHART

CHART XXXVIII

PLANKTON INVESTIGATIONS

CORAL ECOLOGY

Faculty Positions:			
[(#86041)	1.00	(#84260)	1.00
(#86023)	1.00	(#82717)	1.00]
Graduate Asst., GA3R		(#88206)	0.50

FISHERIES INVESTIGATIONS

Faculty Positions:			
(#86051)	1.00	(#88167)	1.00]

AQUACULTURE

FISH ENDOCRINOLOGY

Faculty Positions:			
[(#84127)	1.00	(#84080)	1.00
(#86060)	0.50	(#82166)	1.00
(#82595)	1.00	(#86036)	1.00]
Grad Asst., GA3R		(#88457)	0.50

BEHAVIORAL STUDIES

Faculty Position	(#86024)	1.00
Grad Asst, GA3R	(#88642)	0.50

CHART UPDATED

DATE JUL 01 2008

General Funds 17.00

STATE OF HAWAII  
UNIVERSITY OF HAWAII  
UNIVERSITY OF HAWAII AT MANOA  
SCHOOL OF OCEAN AND EARTH  
SCIENCE AND TECHNOLOGY

HAWAII INSTITUTE OF MARINE BIOLOGY  
POSITION ORGANIZATION CHART

CHART XXXVIIC

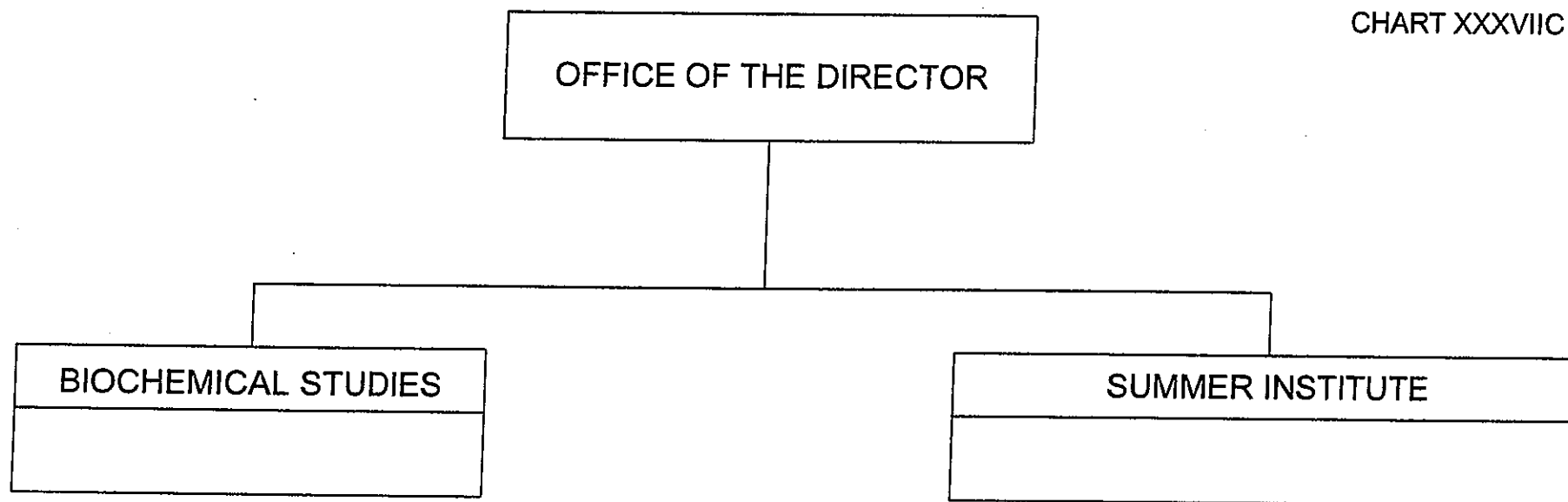
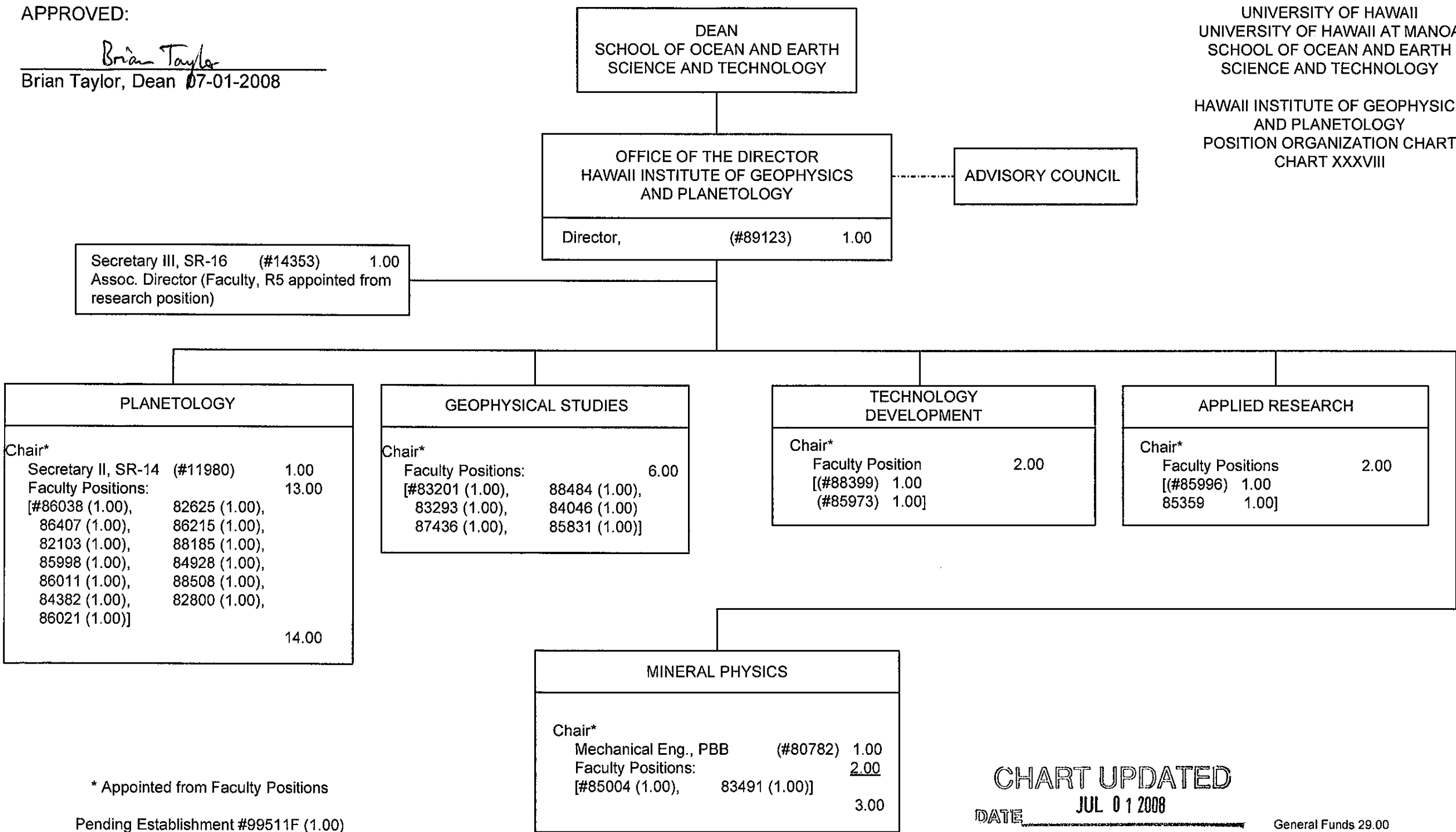


CHART UPDATED  
DATE JUL 01 2008

APPROVED:  
Brian Taylor  
Brian Taylor, Dean 07-01-2008

STATE OF HAWAII  
UNIVERSITY OF HAWAII  
UNIVERSITY OF HAWAII AT MANOA  
SCHOOL OF OCEAN AND EARTH  
SCIENCE AND TECHNOLOGY

HAWAII INSTITUTE OF GEOPHYSICS  
AND PLANETOLOGY  
POSITION ORGANIZATION CHART  
CHART XXXVIII



\* Appointed from Faculty Positions

Pending Establishment #99511F (1.00)

CHART UPDATED  
JUL 01 2008  
DATE

General Funds 29.00

APPROVED:

Brian Taylor  
Brian Taylor, Dean 07-01-2008

STATE OF HAWAII  
UNIVERSITY OF HAWAII  
UNIVERSITY OF HAWAII AT MANOA  
SCHOOL OF OCEAN AND EARTH SCIENCE AND TECHNOLOGY  
HAWAII NATURAL ENERGY INSTITUTE  
POSTIION ORGANIZATION CHART  
CHART XXXIX

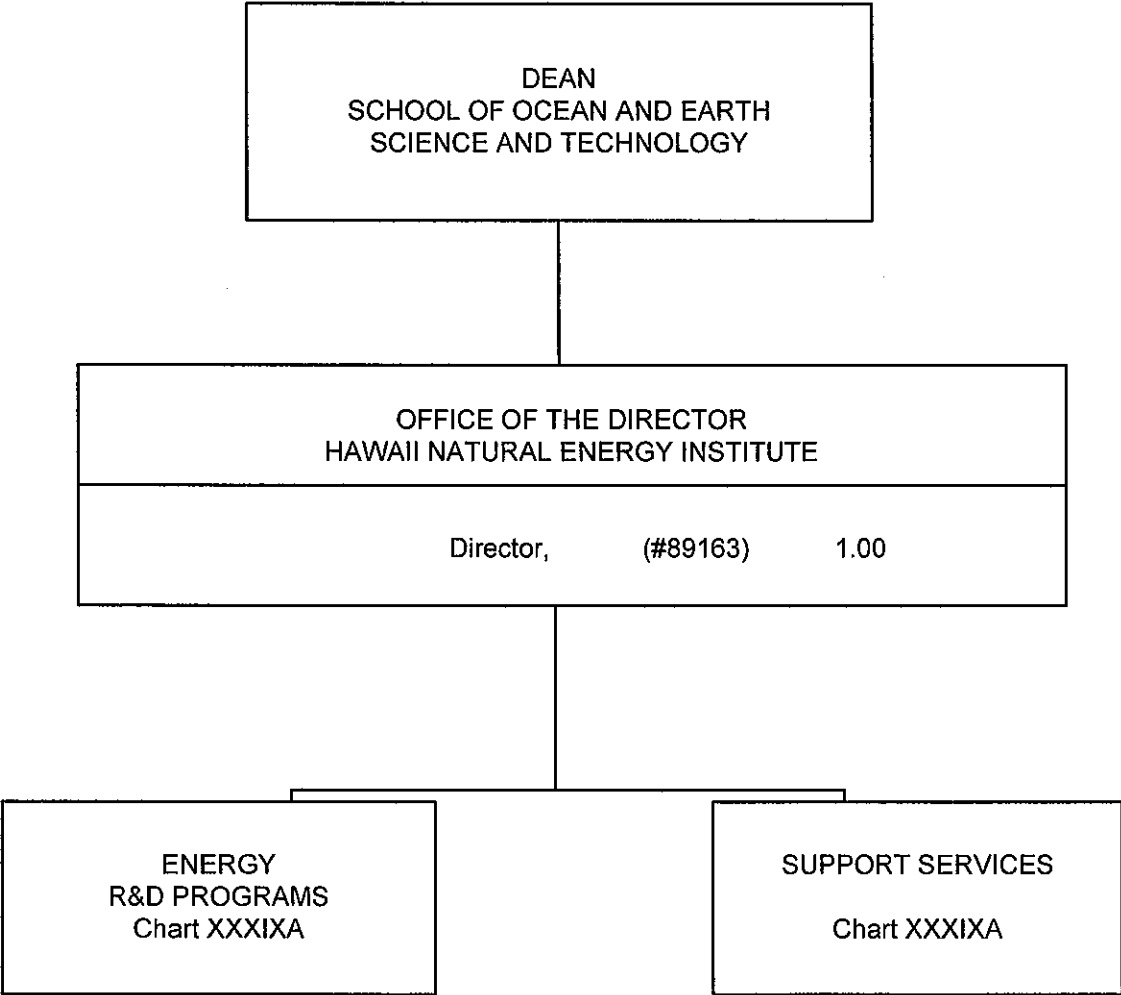
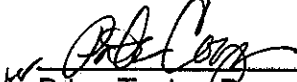


CHART UPDATED  
DATE JUL 01 2008

APPROVED:

  
Brian Taylor, Dean 07-01-2008

STATE OF HAWAII  
UNIVERSITY OF HAWAII  
UNIVERSITY OF HAWAII AT MANOA  
SCHOOL OF OCEAN AND EARTH SCIENCE AND TECHNOLOGY  
HAWAII NATURAL ENERGY INSTITUTE

POSITION ORGANIZATION CHART

CHART XXXIXA

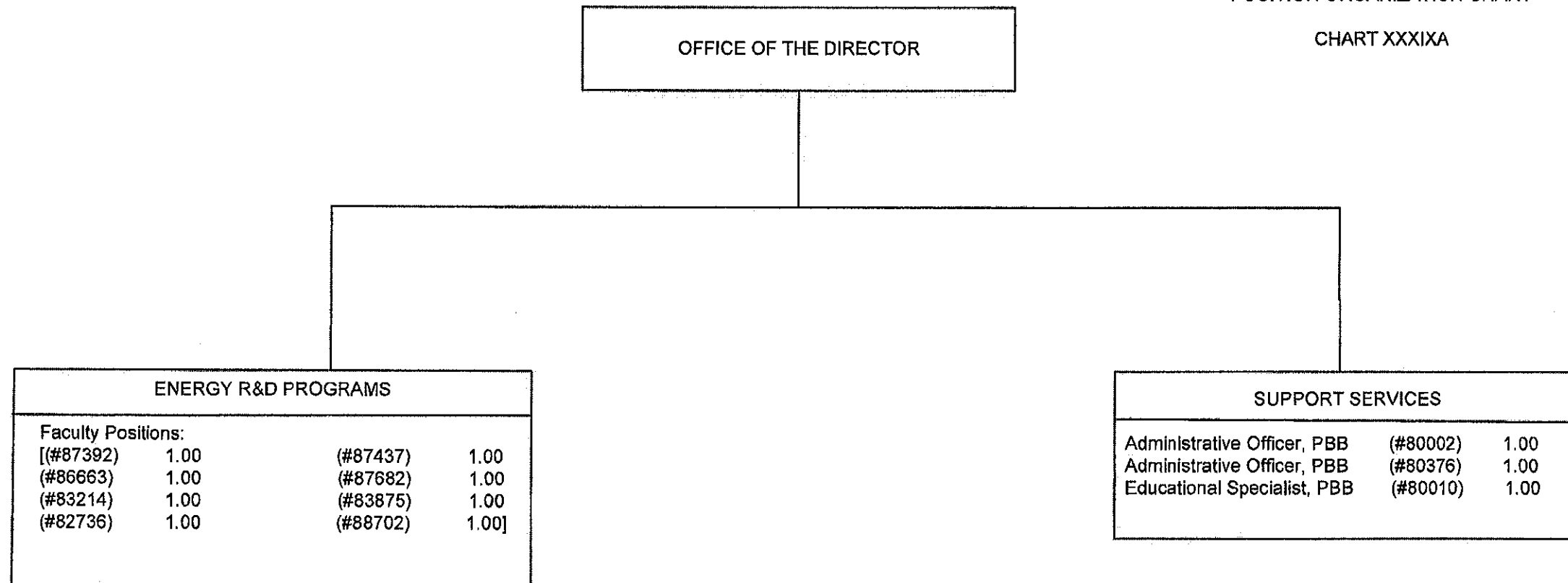


CHART UPDATED  
JUL 01 2008  
DATE \_\_\_\_\_

General Funds 11.00

STATE OF HAWAII  
UNIVERSITY OF HAWAII  
UNIVERSITY OF HAWAII AT MANOA  
SCHOOL OF OCEAN AND EARTH  
SCIENCE AND TECHNOLOGY

SEA GRANT COLLEGE PROGRAM  
ORGANIZATION CHART

CHART XL

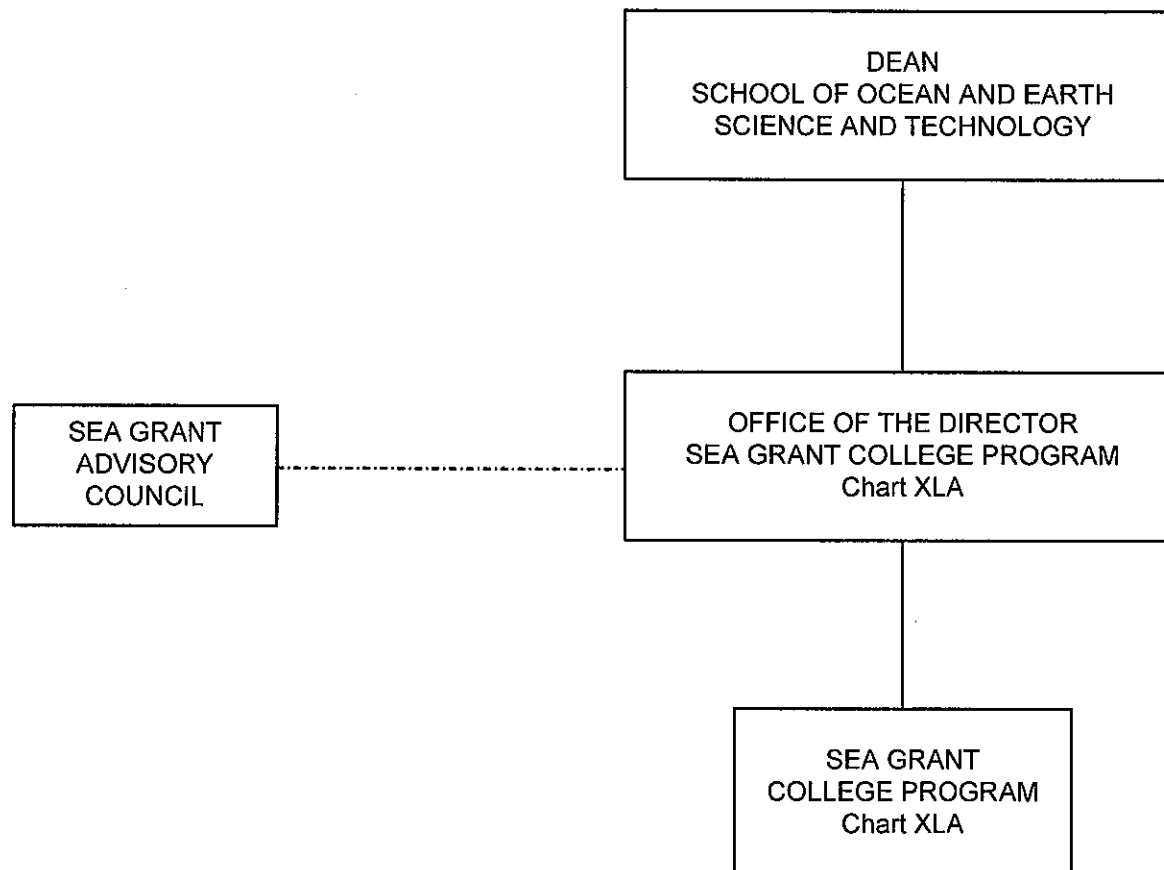


CHART UPDATED

JUL 01 2008

DATE

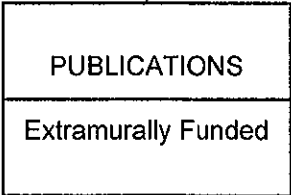
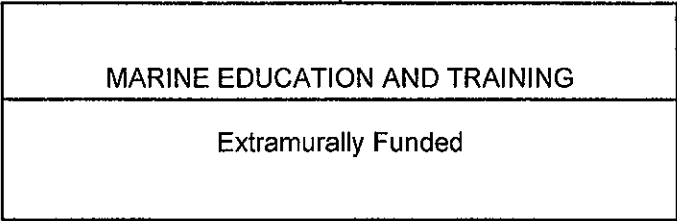
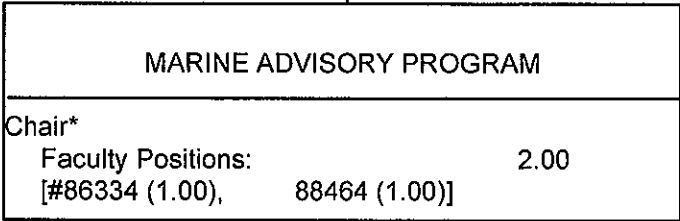
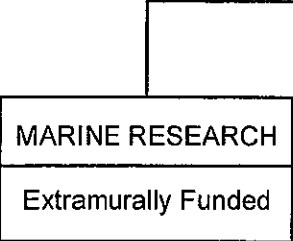
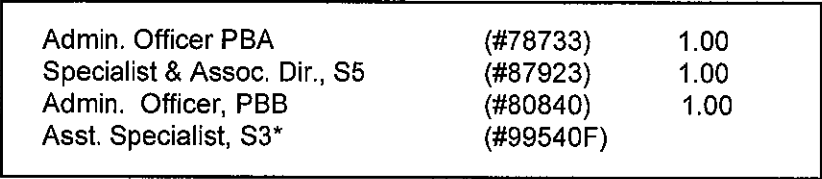
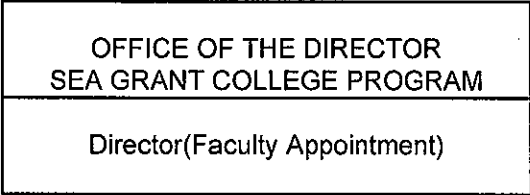
APPROVED:

Brian Taylor  
Brian Taylor, Dean 07-01-2008

STATE OF HAWAII  
UNIVERSITY OF HAWAII  
UNIVERSITY OF HAWAII AT MANOA  
SCHOOL OF OCEAN AND EARTH  
SCIENCE AND TECHNOLOGY

SEA GRANT COLLEGE PROGRAM  
ORGANIZATION CHART

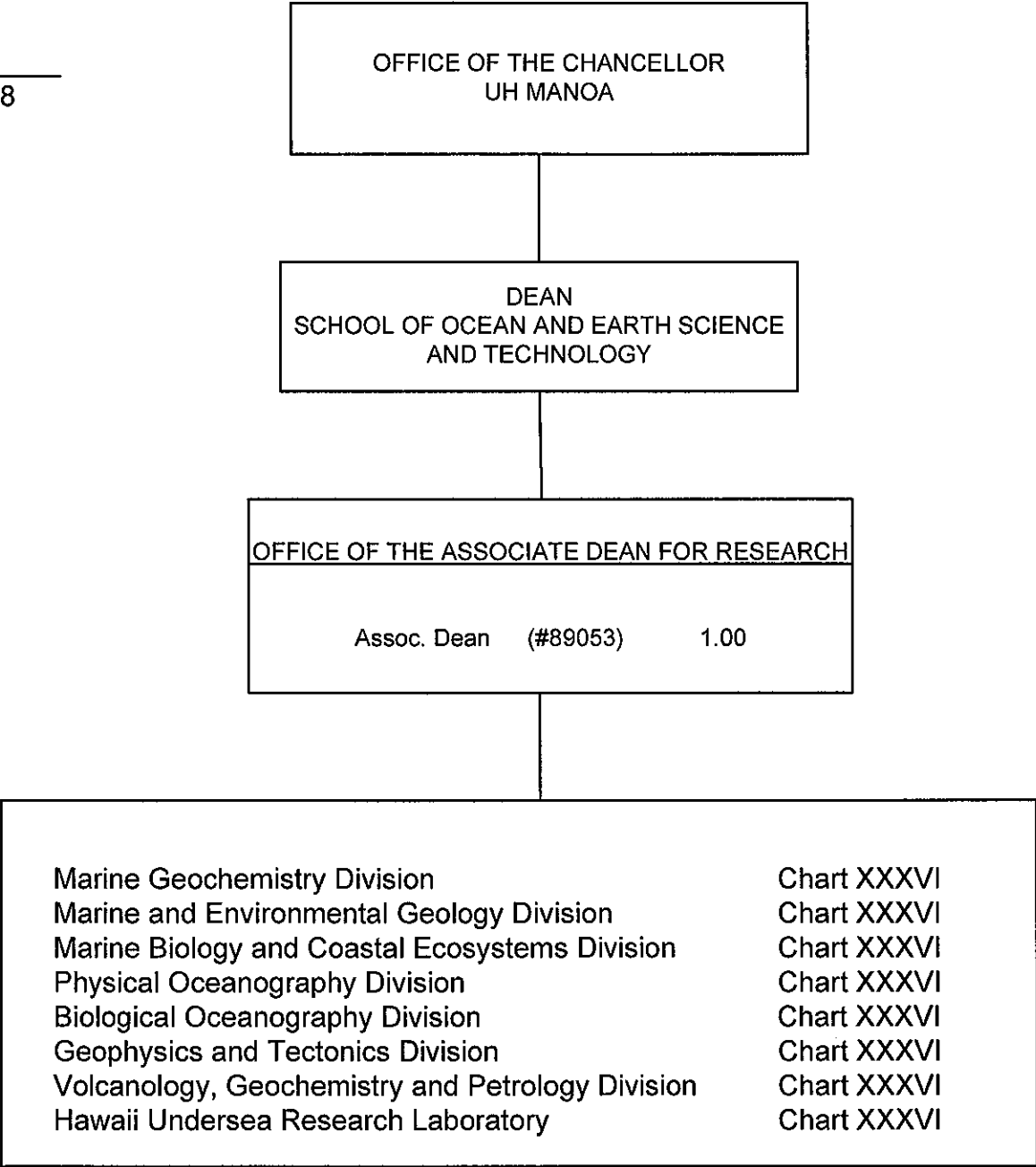
CHART XLA



\*Psuedo #99540F, New Leg position to be created

APPROVED:

Brian Taylor  
Brian Taylor, Dean 07-01-2008



STATE OF HAWAII  
UNIVERSITY OF HAWAII  
UNIVERSITY OF HAWAII AT MANOA  
SCHOOL OF OCEAN AND EARTH  
SCIENCE AND TECHNOLOGY

OFFICE OF THE ASSOCIATE DEAN FOR  
RESEARCH  
POSITION ORGANIZATION CHART  
CHART XLI

General Funds: 1.00  
CHART UPDATED  
JUL 01 2008  
DATE \_\_\_\_\_