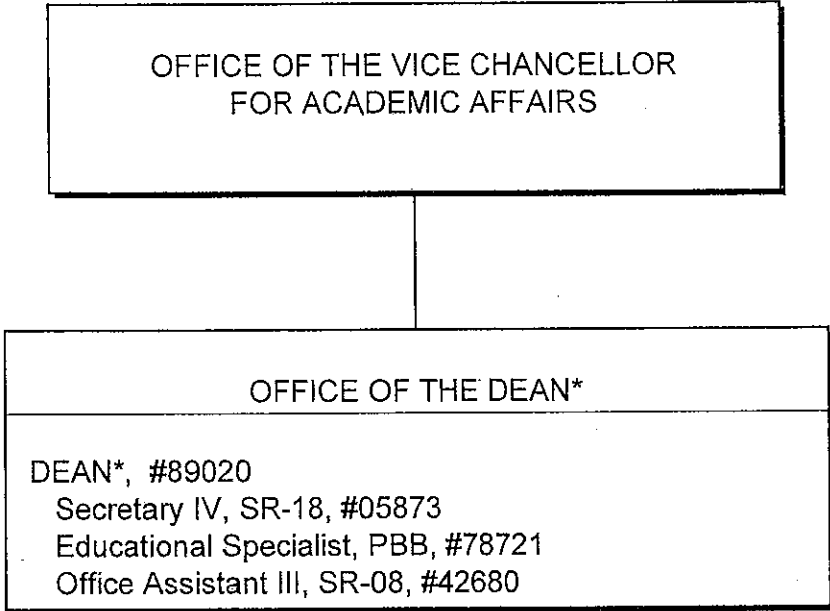


CHART UPDATED
JUL 01 2008
DATE _____

* & Director of Research and Cooperative Extension

STATE OF HAWAII
UNIVERSITY OF HAWAII
UNIVERSITY OF HAWAII AT MANOA
COLLEGE OF TROPICAL AGRICULTURE AND HUMAN
RESOURCES

OFFICE OF THE DEAN
POSITION ORGANIZATION CHART: XLI-A



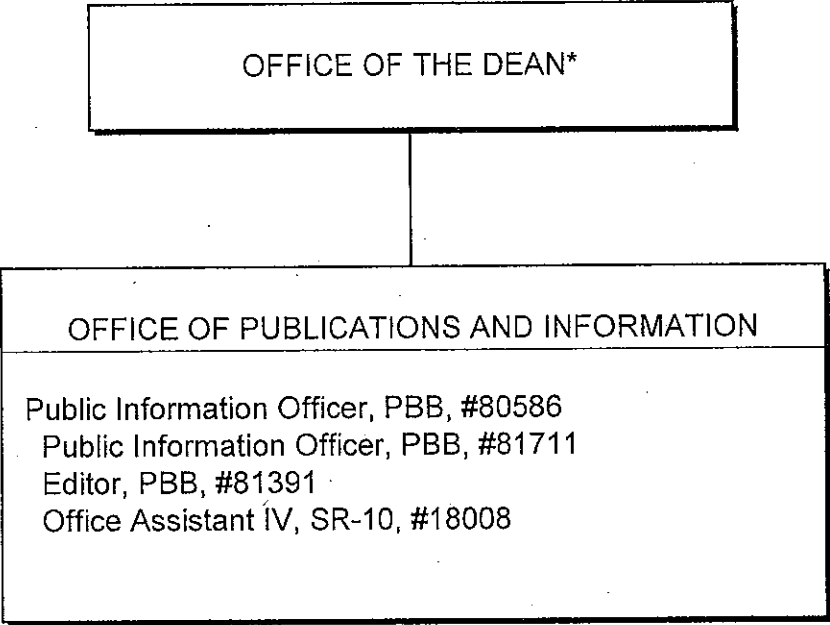
General Funds 4.00

* & Director of Research and Cooperative Extension

CHART UPDATED
DATE JUL 01 2008

STATE OF HAWAII
UNIVERSITY OF HAWAII
UNIVERSITY OF HAWAII AT MANOA
COLLEGE OF TROPICAL AGRICULTURE AND HUMAN RESOURCES

OFFICE OF PUBLICATIONS AND INFORMATION
POSITION ORGANIZATION CHART: XLI-B

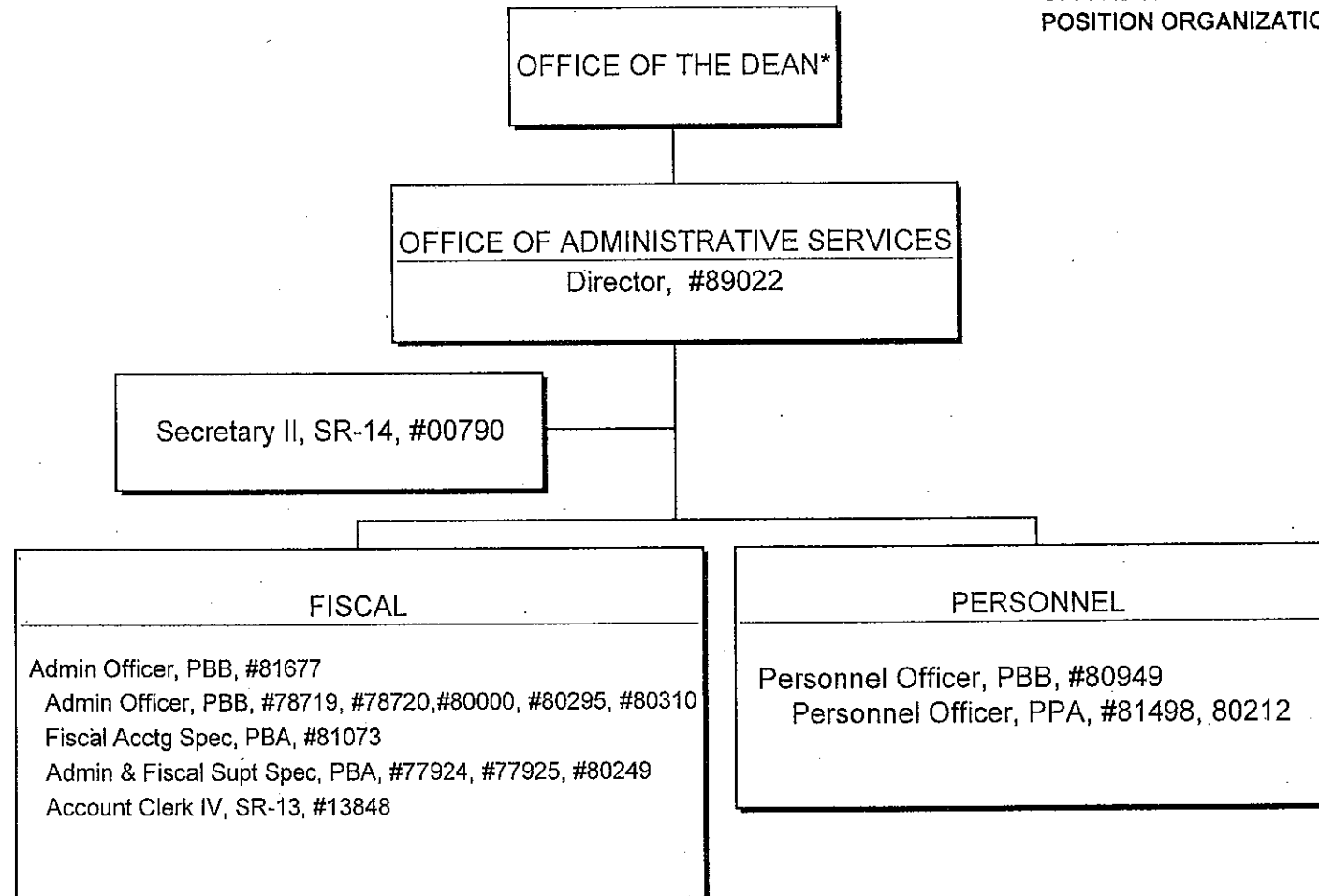


*& Director of Research and Cooperative Extension
General Funds: 4.00

CHART UPDATED
DATE JUL 01 2008

STATE OF HAWAII
UNIVERSITY OF HAWAII
UNIVERSITY OF HAWAII AT MANOA
COLLEGE OF TROPICAL AGRICULTURE AND HUMAN RESOURCES

OFFICE OF ADMINISTRATIVE SERVICES
POSITION ORGANIZATION CHART: XLI-C



* & Director of Research and Cooperative Extension

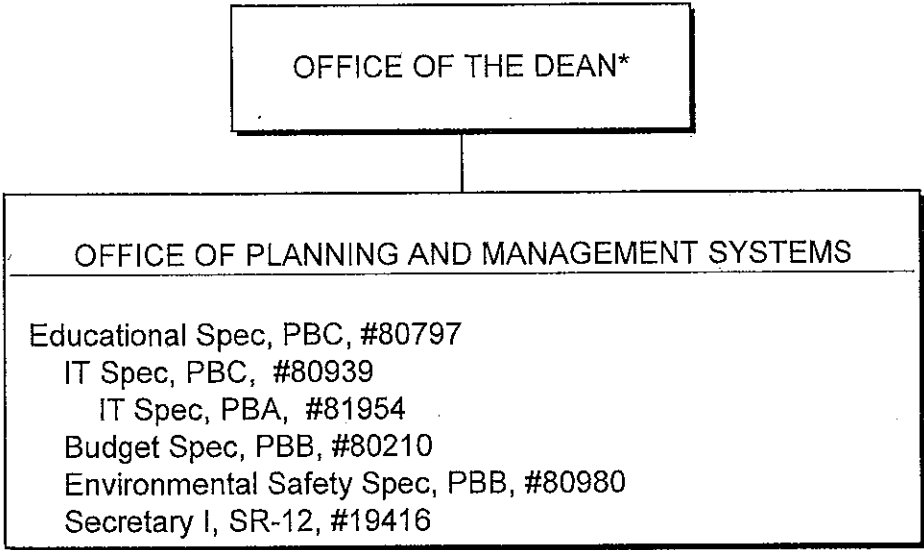
General Funds: 16.00

CHART UPDATED

DATE JUL 01 2008

STATE OF HAWAII
UNIVERSITY OF HAWAII
UNIVERSITY OF HAWAII AT MANOA
COLLEGE OF TROPICAL AGRICULTURE AND HUMAN RESOURCES

OFFICE OF PLANNING AND MANAGEMENT SYSTEMS
POSITION ORGANIZATION CHART: XLI-D

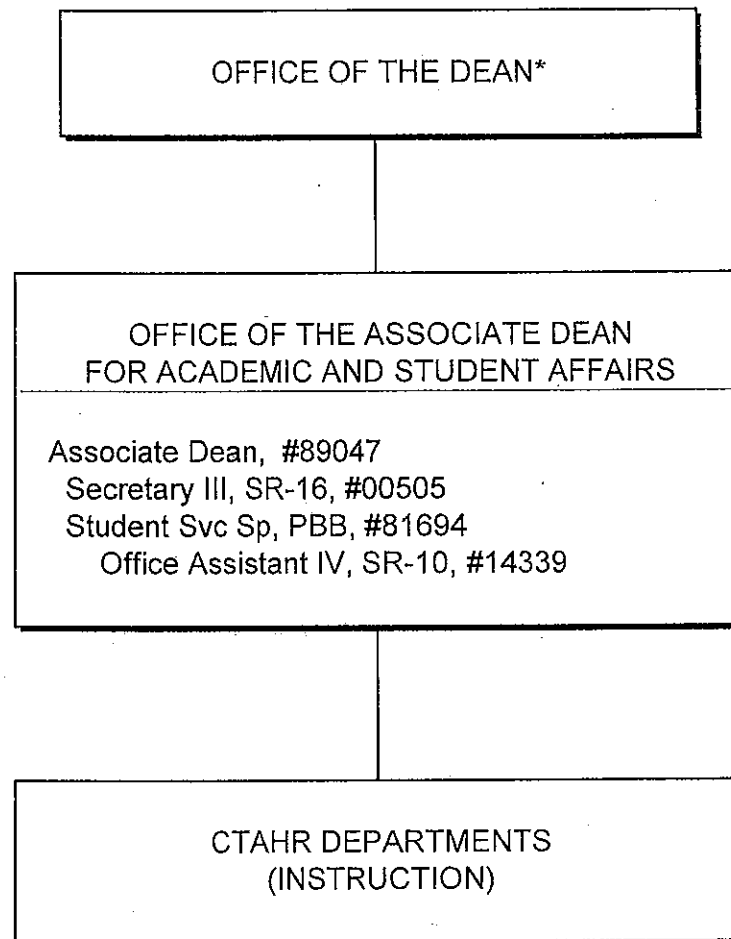


* & Director of Research and Cooperative Extension
General Funds: 6.00

CHART UPDATED
DATE JUL 01 2008

STATE OF HAWAII
UNIVERSITY OF HAWAII
UNIVERSITY OF HAWAII AT MANOA
COLLEGE OF TROPICAL AGRICULTURE AND HUMAN RESOURCES

OFFICE OF THE ASSOCIATE DEAN FOR ACADEMIC AND STUDENT
AFFAIRS
POSITION ORGANIZATION CHART: XLI-E

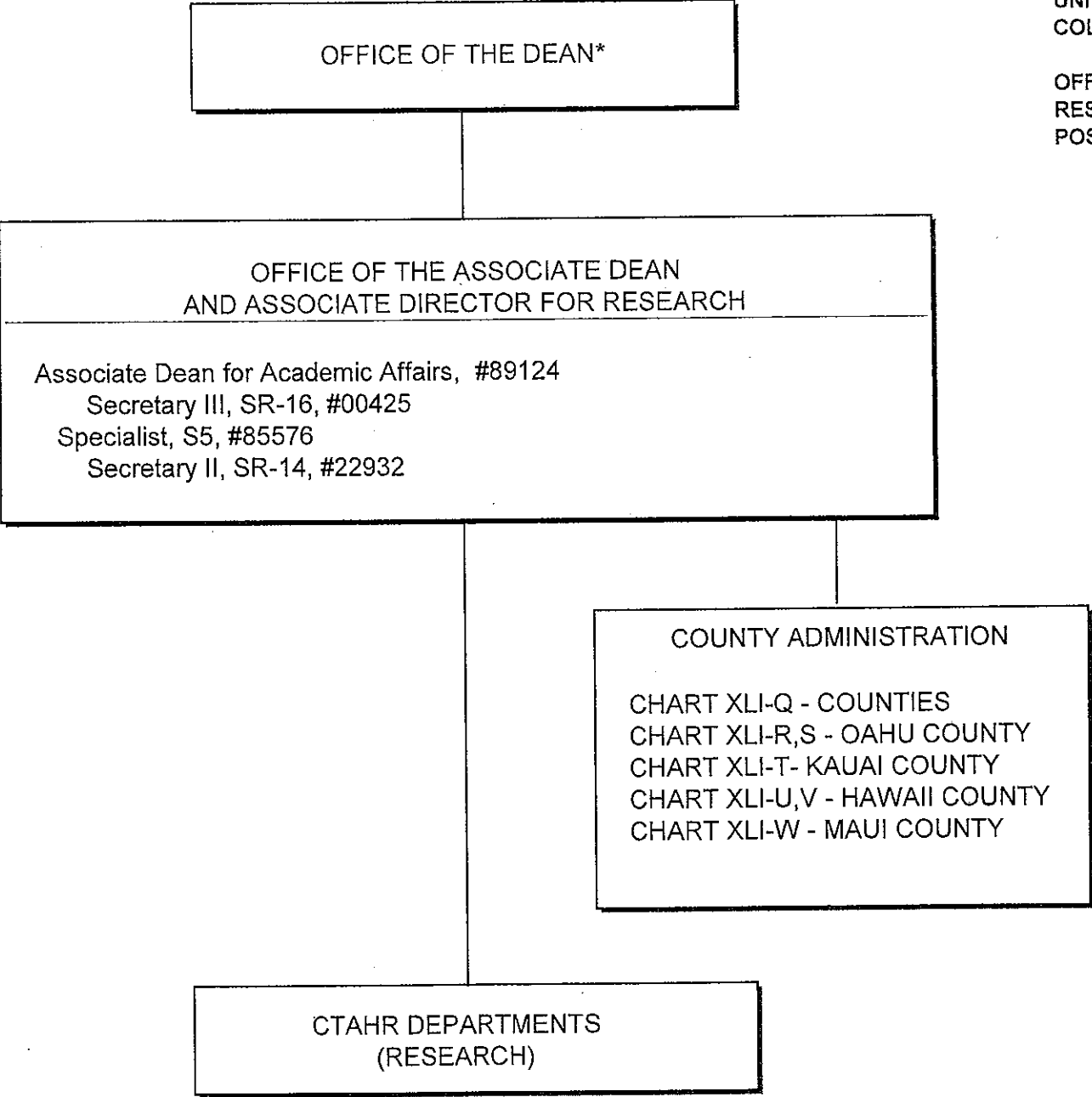


*& Director of Research and Cooperative Extension
General Funds: 4.00

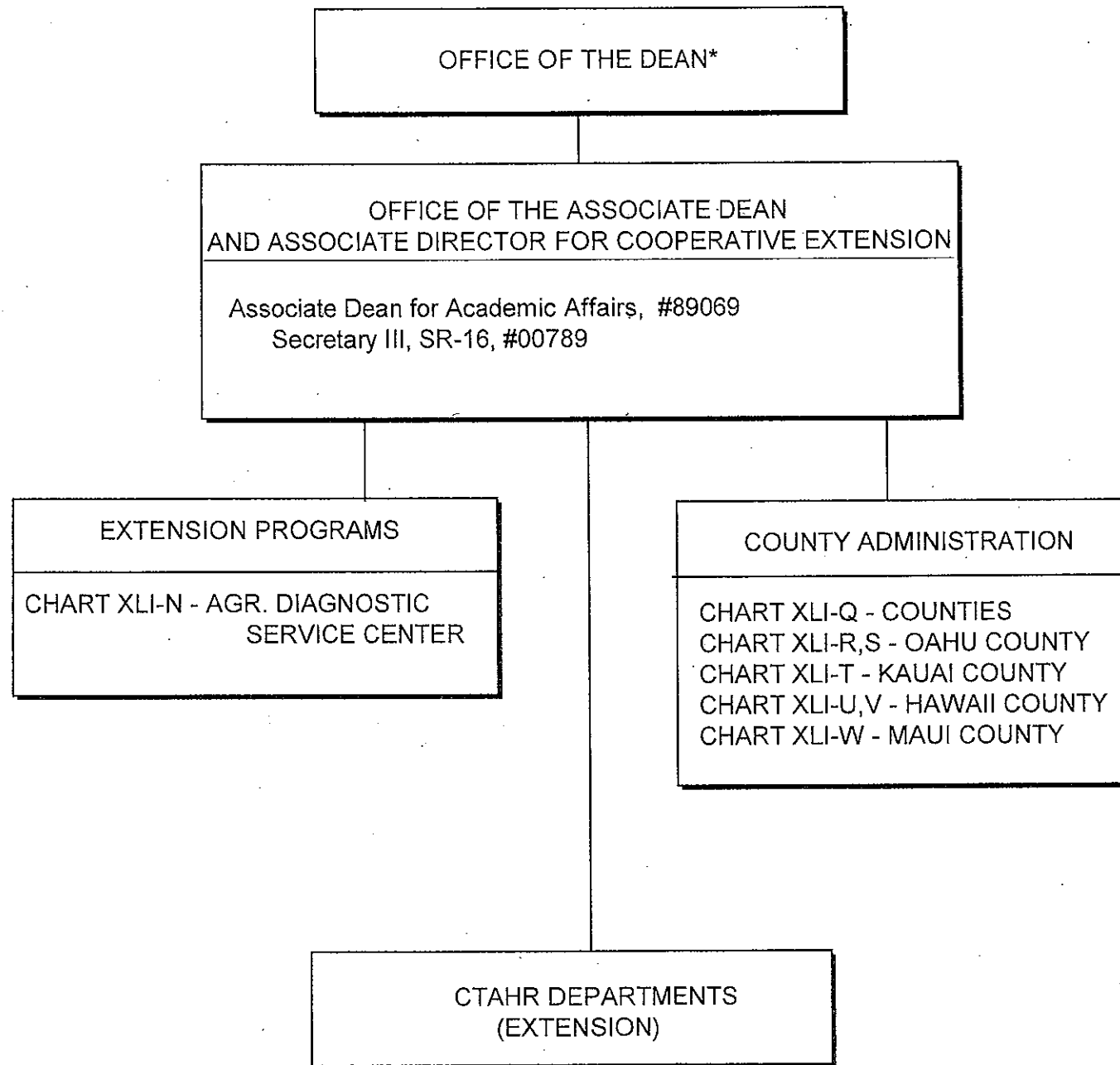
CHART UPDATED
DATE JUL 01 2008

STATE OF HAWAII
UNIVERSITY OF HAWAII
UNIVERSITY OF HAWAII AT MANOA
COLLEGE OF TROPICAL AGRICULTURE AND HUMAN RESOURCES

OFFICE OF THE ASSOCIATE DEAN AND ASSOCIATE DIRECTOR FOR RESEARCH
POSITION ORGANIZATION CHART: XLI-F



*& Director of Research and Cooperative Extension
General Funds: 4.00



STATE OF HAWAII
UNIVERSITY OF HAWAII
UNIVERSITY OF HAWAII AT MANOA
COLLEGE OF TROPICAL AGRICULTURE AND HUMAN RESOURCES

OFFICE OF THE ASSOCIATE DEAN AND ASSOCIATE DIRECTOR
FOR COOPERATIVE EXTENSION
POSITION ORGANIZATION CHART: XLI-G

* & Director of Research and Cooperative Extension
General Funds: 2.00

CHART UPDATED
DATE JUL 01 2008

OFFICES OF THE ASSOCIATE DEANS AND DIRECTORS
FOR ACADEMIC AND STUDENT AFFAIRS,
RESEARCH, AND COOPERATIVE EXTENSION

STATE OF HAWAII
UNIVERSITY OF HAWAII
UNIVERSITY OF HAWAII AT MANOA
COLLEGE OF TROPICAL AGRICULTURE AND HUMAN RESOURCES

DEPARTMENT OF FAMILY AND CONSUMER SCIENCES
POSITION ORGANIZATION CHART: XLI-H

DEPARTMENT OF FAMILY AND CONSUMER SCIENCES

Chairperson (Appointed from among faculty positions)

Secretary II, SR-14, #22849

Clerk-Steno II, SR-09, #21208

Office Assistant III, SR-08, #04108

Faculty ^{1/}

Oahu

#82074, #82336, #82392, #82699, #82866, #82869, #82094, #83220, #83242,
#83525, #83553, #83666, #83765, #83843, #83968, #84070, #84082, #84388,
#84648, #84662, #84685, #84914, #85151, #85421, #85476, #86066, #86274

Hawaii

#82313, #82505, #84610

Kauai

#82175

Maui

#84913, #84147

Educ & Acad Supt Spec, PBA, #80784

Admin & Fiscal Supt Spec, PBA, #78061

Graduate Assistant, GA, #88134 (.50), #88410 (.50), #88576 (.50)

^{1/} Research FTE: 2.45, Extension FTE: 2.95, Instruction FTE: 15.32

General Funds: 27.22

CHART UPDATED

DATE JUL 01 2008

OFFICES OF THE ASSOCIATE DEANS AND DIRECTORS
FOR ACADEMIC AND STUDENT AFFAIRS,
RESEARCH, AND COOPERATIVE EXTENSION

STATE OF HAWAII
UNIVERSITY OF HAWAII
UNIVERSITY OF HAWAII AT MANOA
COLLEGE OF TROPICAL AGRICULTURE AND HUMAN RESOURCES

DEPARTMENT OF HUMAN NUTRITION, FOOD AND ANIMAL
SCIENCES
POSITION ORGANIZATION CHART: XLI-I

DEPARTMENT OF HUMAN NUTRITION, FOOD AND ANIMAL SCIENCES

Chairperson (Appointed from among faculty positions)

Secretary II, SR-14, #00400

Office Assistant III, SR-08, #15513, #42682

Faculty ^{1/}

Oahu

#82107, #82248, #82945, #83017, #83510, #83633, #83742, #83785, #83811, #83830, #83862,

#84227, #84306, #84323, #84439, #84449, #84454, #84512, #84640, #84668, #84919, #84920, #87443

Maui

#83728, #84163

Hawaii

#82090, #84158, #84276, #84297

Kauai

#82363

Admin & Fiscal Supt Spec, PBA, #80386

Research Associate, PBB, #80410

Research Associate, PBA, #77092

IT Spec, PBB, #80037

Graduate Asst, GA-R, #88088 (.50), #88165 (.50), #88241 (.50), #88303 (.50), #88438 (.50), #88565 (.50)

^{1/} Research FTE: 4.65, Extension FTE: 3.30, Instruction FTE: 10.30

General Funds: 41.25

CHART UPDATED
DATE JUL 01 2008

STATE OF HAWAII
UNIVERSITY OF HAWAII
UNIVERSITY OF HAWAII AT MANOA
COLLEGE OF TROPICAL AGRICULTURE AND HUMAN RESOURCES

DEPARTMENT OF MOLECULAR BIOSCIENCES AND BIOSYSTEMS
ENGINEERING
POSITION ORGANIZATION CHART: XLI-J

OFFICES OF THE ASSOCIATE DEANS AND DIRECTORS
FOR ACADEMIC AND STUDENT AFFAIRS,
RESEARCH, AND COOPERATIVE EXTENSION

DEPARTMENT OF MOLECULAR BIOSCIENCES AND BIOENGINEERING

Chairperson (Appointed from among faculty positions)

Secretary II, SR-14, #12960

Office Assistant III, SR-08, #14758

Faculty^{1/}

Oahu

#82027, #82432, #82919, #83034, #83184, #83343, #83690, #83767,

#83882, #84114, #84193, #84600, #84617, #84631, #87523, #85425, #85517

Admin & Fiscal Supt Spec, PBA, #78046

Engineer, PBB, #78812

Research Associate, PBB, #80323, #80324, #80409, #81325

Graduate Assistant, GA-R, #88219 (.50), #88509 (.50), #88630 (.50), #88643 (.50)

Agr Eqp Dev Wkg Supv, WS-13, #05729

Agr Lab Technician I, BC-12, #05730

^{1/} Research FTE: 6.30, Extension FTE: .50, Instruction FTE: 3.90
General Funds: 22.70

CHART UPDATED
DATE JUL 01 2008

STATE OF HAWAII
UNIVERSITY OF HAWAII
UNIVERSITY OF HAWAII AT MANOA
COLLEGE OF TROPICAL AGRICULTURE AND HUMAN RESOURCES

DEPARTMENT OF NATURAL RESOURCES AND ENVIRONMENTAL
MANAGEMENT
POSITION ORGANIZATION CHART: XLI-K

OFFICES OF THE ASSOCIATE DEANS AND DIRECTORS
FOR ACADEMIC AND STUDENT AFFAIRS,
RESEARCH, AND COOPERATIVE EXTENSION

DEPARTMENT OF NATURAL RESOURCES AND ENVIRONMENTAL MANAGEMENT

Chairperson (Appointed from among faculty positions)
Secretary II, SR-14, #05838
Office Assistant III, SR-08, #03397, #42681

Faculty ^{1/}
Oahu

#82058, #82516, #82772, #83117, #83629, #83770, #83824, #84120,
#84171, #84216, #84488, #84627, #84872, #84915, #86242, #87234

Hawaii

#83459

Educational Spec. PBB, #80391

Research Associate, PBA, #80320

Admin & Fiscal Supt Spec, PBA, #78324

Graduate Assistant, GA #88028 (.50), #88181 (.50), #88431 (.50), #88494 (.50)

Agr Research Technician IV, SR-14, #00398

^{1/} Research FTE: 5.75, Extension FTE: 2.70, Instruction FTE: 5.70
General Funds: 23.15

CHART UPDATED

DATE JUL 01 2008

OFFICES OF THE ASSOCIATE DEANS AND DIRECTORS
FOR ACADEMIC AND STUDENT AFFAIRS,
RESEARCH, AND COOPERATIVE EXTENSION

STATE OF HAWAII
UNIVERSITY OF HAWAII
UNIVERSITY OF HAWAII AT MANOA
COLLEGE OF TROPICAL AGRICULTURE AND HUMAN RESOURCES

DEPARTMENT OF PLANT AND ENVIRONMENTAL PROTECTION
SCIENCES
POSITION ORGANIZATION CHART: XLI-L

DEPARTMENT OF PLANT AND ENVIRONMENTAL PROTECTION SCIENCES

Chairperson (Appointed from among faculty positions)

Secretary II, SR-14, #07477

Office Assistant III, SR-08, #00794, #15509

Faculty 1/

Oahu

#82047, #82139, #82550, #82687, #83067, #83320, #83513, #83884,
#84006, #84041, #84138, #84316, #84489, #84911, #85547

Maui

#86034, #85530

Hawaii

#82985, #82722, #83462, #83542, #85538

Kauai

#83816, #83840, #85505

Admin & Fiscal Support, PBA, #77864

Educational Specialist, PBB, #80250

Research Associate, PBB, #80385, #80388, #81178, #81311

Research Associate, PBA, #81313

Graduate Assistant, GA, #88486 (.50), #84932 (.50)

Agr Research Technician V, SR-16, #00442

Agr Research Technician IV, SR-14, #24270

Agr Research Technician III, SR-11, #24269

1/ Research FTE: 5.16, Extension FTE: 1.76, Instruction FTE: 4.35
General Funds: 25.27

CHART UPDATED
DATE JUL 01 2008

OFFICES OF THE ASSOCIATE DEANS AND DIRECTORS
FOR ACADEMIC AND STUDENT AFFAIRS,
RESEARCH, AND COOPERATIVE EXTENSION

STATE OF HAWAII
UNIVERSITY OF HAWAII
UNIVERSITY OF HAWAII AT MANOA
COLLEGE OF TROPICAL AGRICULTURE AND HUMAN
RESOURCES

DEPARTMENT OF TROPICAL PLANT AND SOIL SCIENCE
POSITION ORGANIZATION CHART: XLI-M

DEPARTMENT OF TROPICAL PLANT AND SOIL SCIENCE

Chairperson (Appointed from among faculty positions)

Secretary II, SR-14, #00793

Clerk-Steno III, SR-11, #00399

Faculty 1/

Oahu

#82023, #82181, #82240, #82464, #82598, #82704, #82747, #82881, #83142,
#83159, #83260, #83304, #83388, #83682, #83740, #83938, #84067, #84321
#84408, #84420, #84481, #84501, #84916, #85555, #86275

Maui

#83848, #84075, #84530, #85477, #87584

Hawaii

#82758, #83054, #82951, #83073, #83286, #83515, #84354, #85542

Kauai

#82196, #84500

Admin & Fiscal Support, PBA, #77795

Educational Specialist, PBB, #81362

Research Associate, PBB, #80270, #80313

Graduate Assistant, GA, #88171 (.50), #88423 (.50)

Agr Research Technician V, SR-16, #11019

Agr Research Technician IV, SR-14, #05392, #00397, #15512

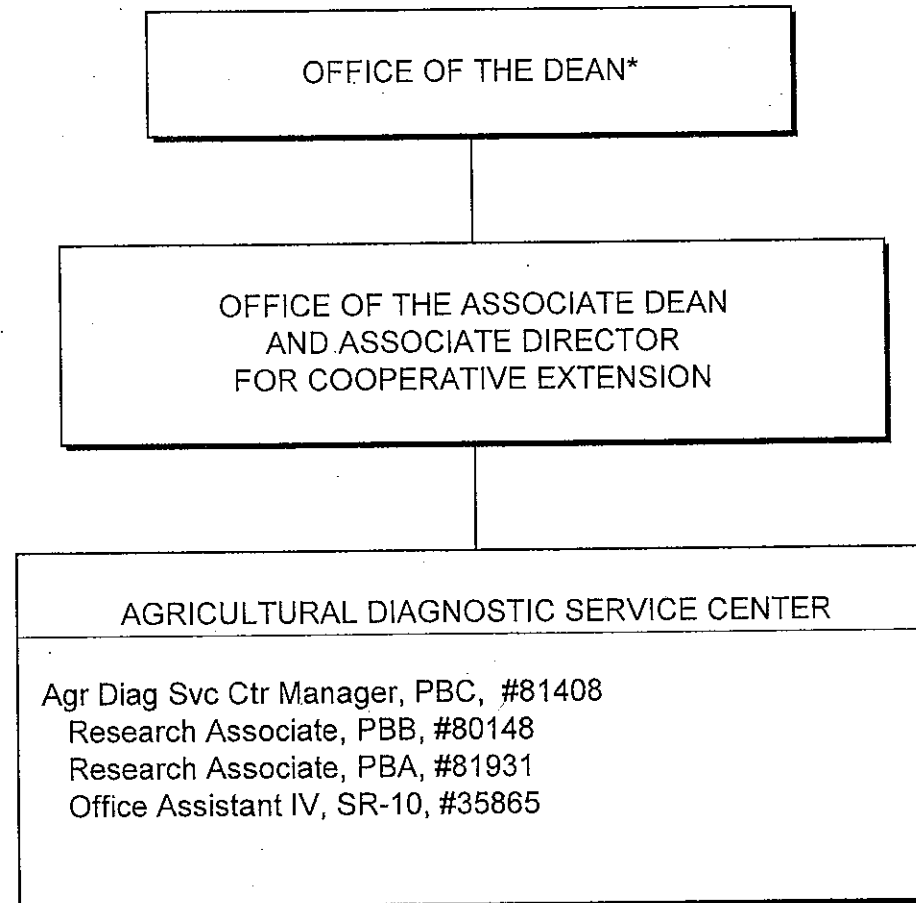
1/Research FTE: 5.60, Extension FTE: 9.70, Instruction FTE: 4.07
General Funds: 32.37

CHART UPDATED

DATE JUL 01 2008

STATE OF HAWAII
UNIVERSITY OF HAWAII
UNIVERSITY OF HAWAII AT MANOA
COLLEGE OF TROPICAL AGRICULTURE AND HUMAN RESOURCES

AGRICULTURAL DIAGNOSTIC SERVICE CENTER
POSITION ORGANIZATION CHART: XLI-N

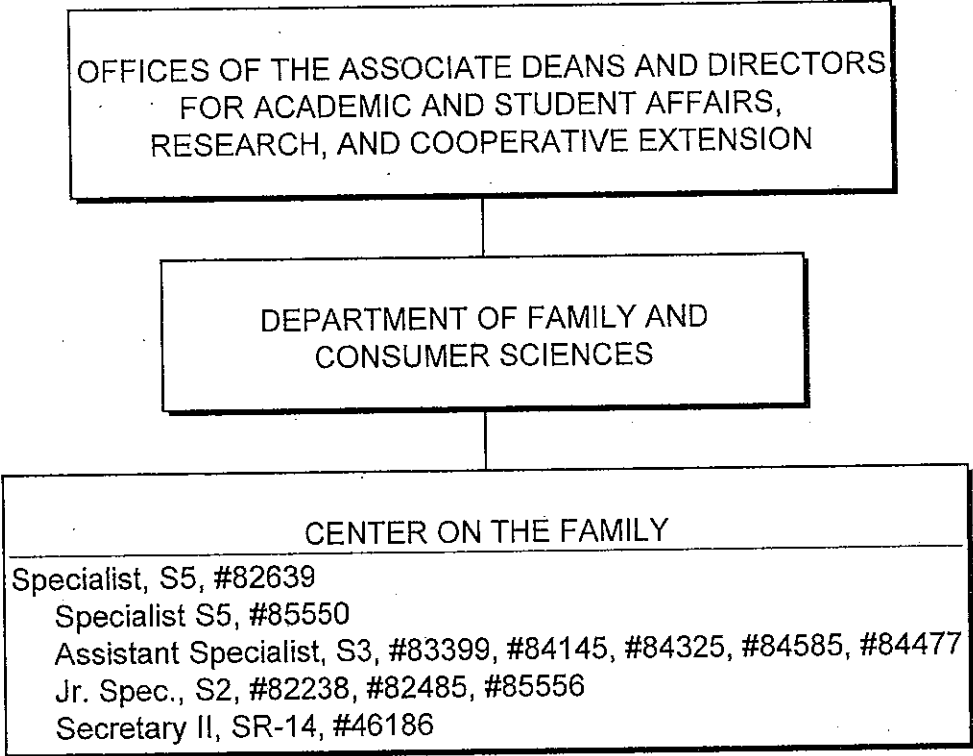


* & Director of Research and Cooperative Extension
General Funds: 4.00

CHART UPDATED
DATE JUL 01 2008

STATE OF HAWAII
UNIVERSITY OF HAWAII
UNIVERSITY OF HAWAII AT MANOA
COLLEGE OF TROPICAL AGRICULTURE AND HUMAN RESOURCES

CENTER ON THE FAMILY
POSITION ORGANIZATION CHART: XLI-O

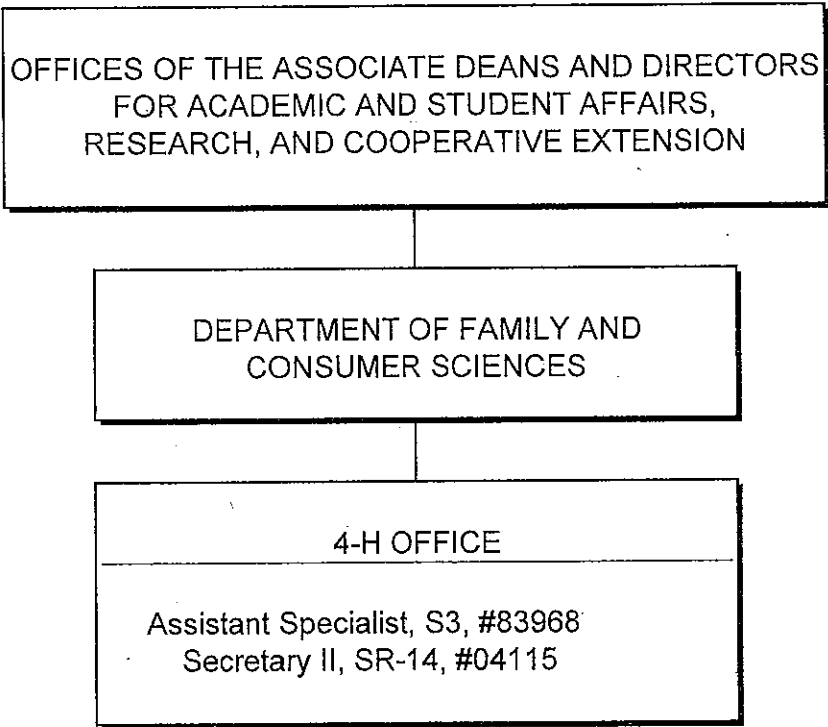


General Funds: 7.80

CHART UPDATED
DATE JUL 01 2008

STATE OF HAWAII
UNIVERSITY OF HAWAII
UNIVERSITY OF HAWAII AT MANOA
COLLEGE OF TROPICAL AGRICULTURE AND HUMAN RESOURCES

4-H OFFICE
POSITION ORGANIZATION CHART: XLI-P



General Funds: 2.00

CHART UPDATED
DATE JUL 01 2008

STATE OF HAWAII
UNIVERSITY OF HAWAII
UNIVERSITY OF HAWAII AT MANOA
COLLEGE OF TROPICAL AGRICULTURE AND HUMAN RESOURCES

COUNTY ADMINISTRATION
POSITION ORGANIZATION CHART: XLI-Q

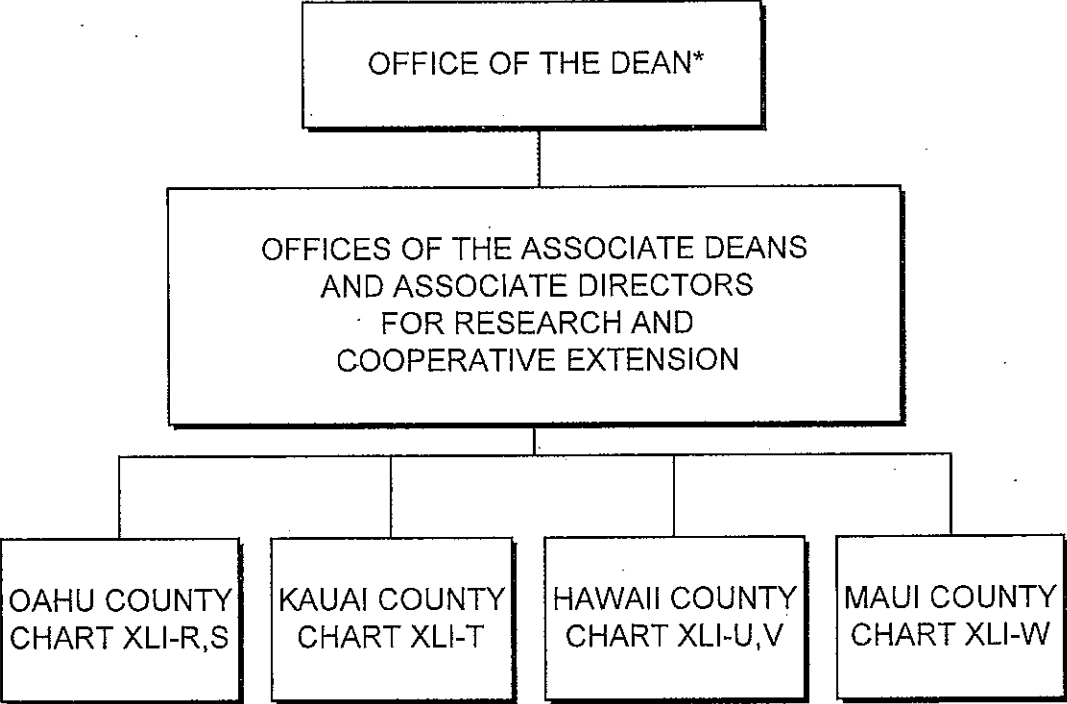
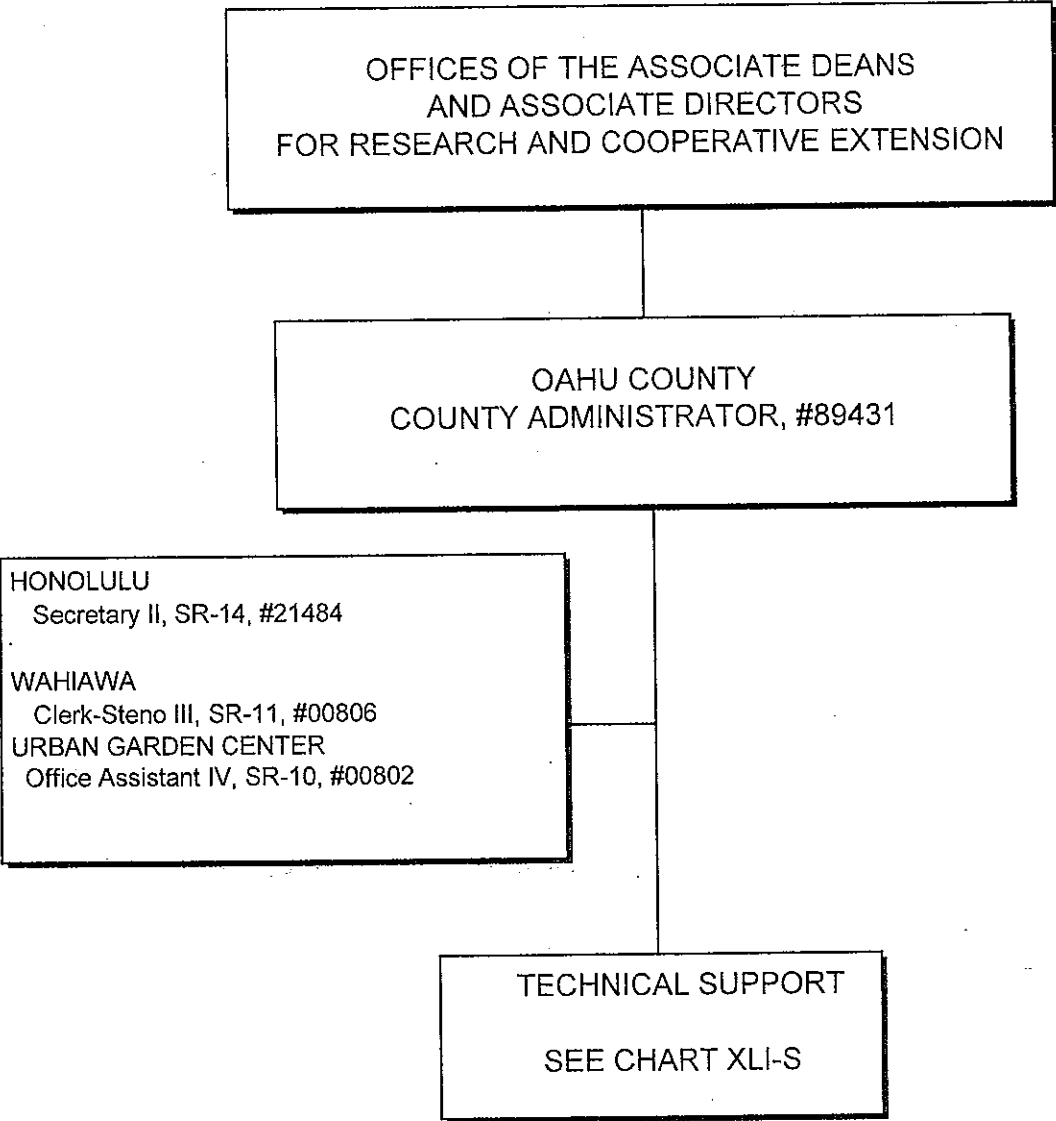


CHART UPDATED
DATE JUL 01 2008

*& Director of Cooperative Science & Education

STATE OF HAWAII
UNIVERSITY OF HAWAII
UNIVERSITY OF HAWAII AT MANOA
COLLEGE OF TROPICAL AGRICULTURE AND HUMAN RESOURCES

OAHU COUNTY
POSITION ORGANIZATION CHART: XLI-R

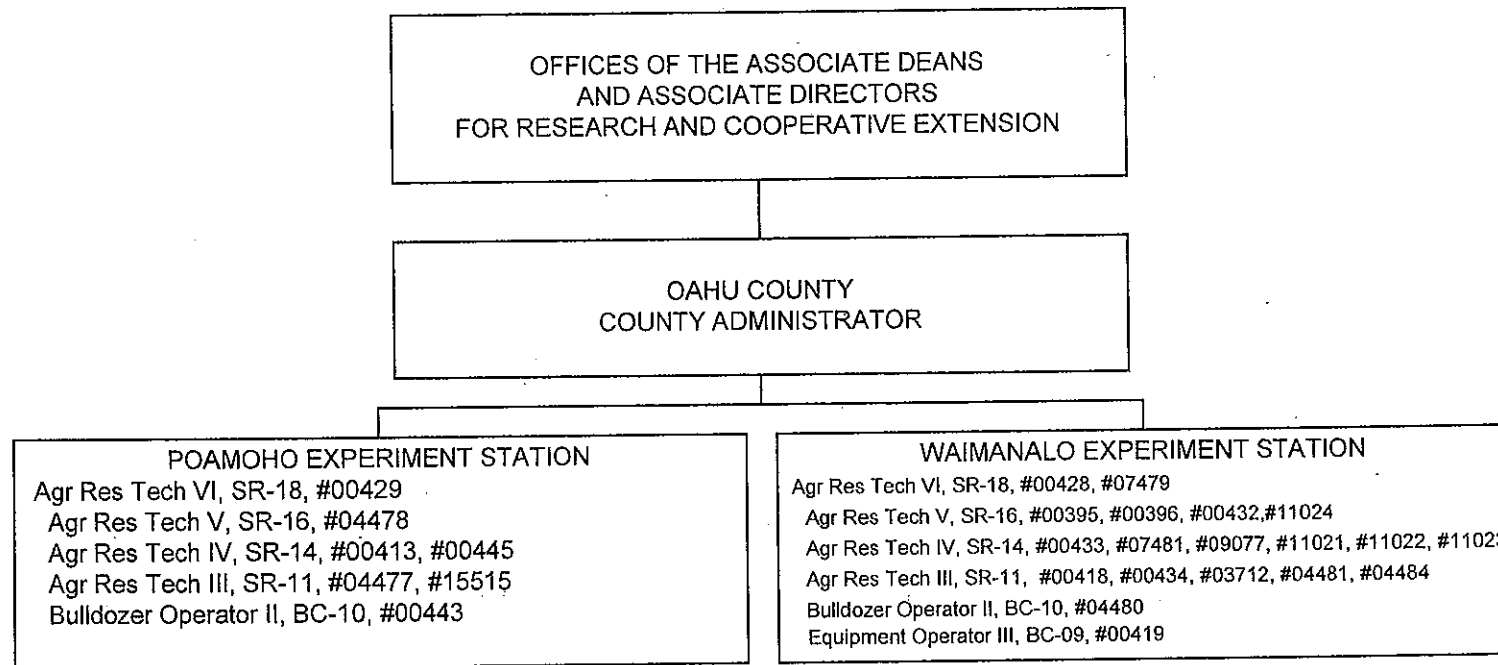


General Funds: 4.00

CHART UPDATED
DATE JUL 01 2008

STATE OF HAWAII
UNIVERSITY OF HAWAII
UNIVERSITY OF HAWAII AT MANOA
COLLEGE OF TROPICAL AGRICULTURE
AND HUMAN RESOURCES

OAHU COUNTY - TECHNICAL SUPPORT
POSITION ORGANIZATION CHART: XLI-S



General Funds: 26.00

CHART UPDATED
DATE JUL 01 2008

OFFICES OF THE ASSOCIATE DEANS
AND ASSOCIATE DIRECTORS
FOR RESEARCH AND COOPERATIVE EXTENSION

STATE OF HAWAII
UNIVERSITY OF HAWAII
UNIVERSITY OF HAWAII AT MĀNOA
COLLEGE OF TROPICAL AGRICULTURE AND HUMAN RESOURCES

KAUAI COUNTY
POSITION ORGANIZATION CHART: XLI-T

KAUAI COUNTY
COUNTY ADMINISTRATOR
#89216

LIHUE
Secretary II, SR-14, #04003
KAPAA
Clerk-Steno III, SR-11, #13872

TECHNICAL SUPPORT
KAPAA
Agr Res Tech VI, SR-18, #12753
Agr Res Tech IV, SR-14, #12102, #12758
Agr Res Tech III, SR-11, #12760, #12761

General Funds: 8.00

CHART UPDATED
DATE JUL 01 2008

OFFICES OF THE ASSOCIATE DEANS
AND ASSOCIATE DIRECTORS
FOR RESEARCH AND COOPERATIVE EXTENSION

HAWAII COUNTY
COUNTY ADMINISTRATOR, #89213

KOMOHANA

Secretary II, SR-14, #13871

Clerk-Steno III, SR-11, #09084

Office Assistant III, SR-08, #00791

KONA

Office Assistant IV, SR-10, #00797

Kamuela

Office Assistant IV, SR-10, #00799

TECHNICAL SUPPORT

SEE CHART XLI-V

STATE OF HAWAII
UNIVERSITY OF HAWAII
UNIVERSITY OF HAWAII AT MANOA
COLLEGE OF TROPICAL AGRICULTURE AND HUMAN RESOURCES

HAWAII COUNTY
POSITION ORGANIZATION CHART: XLI-U

General Funds: 6.00

CHART UPDATED

DATE JUL 01 2008

OFFICES OF THE ASSOCIATE DEANS
AND ASSOCIATE DIRECTORS
FOR RESEARCH AND COOPERATIVE EXTENSION

HAWAII COUNTY
COUNTY ADMIN, #89213
Educational Spec, PBB, #80311

STATE OF HAWAII
UNIVERSITY OF HAWAII
UNIVERSITY OF HAWAII AT MANOA
COLLEGE OF TROPICAL AGRICULTURE AND HUMAN RESOURCES

HAWAII COUNTY - TECHNICAL SUPPORT
POSITION ORGANIZATION CHART: XLI-V

WEST HAWAII
Agr Res Tech VI, SR-18, #13530

EAST HAWAII
Agr Res Tech VI, SR-18, #12099

MEALANI
Agr Res Tech V, SR-16, #13534
Agr Res Tech IV, SR-14, #12100, #14590
Agr Res Tech III, SR-11, #13205, #13709
#44868, #44867

WAIAKEA
Agr Res Tech V, SR-16, #12101, #12094, #14166
Agr Res Tech IV SR-14, #12096, #12766, #12767, #14168
Agr Res Tech III, SR-11, #17602, #12098, #15497
Building Maintenance Worker I, BC-09, #12095

HAMAKUA
Agr Res Tech III, SR-11, #13536

VOLCANO
Agr Res Tech V, SR-16, #13206
Agr Res Tech III, SR-11, #12097

KONA
Agr Res Tech V, SR-16, #00409
Agr Res Tech IV, SR-14, #22912

MALAMA-KI
Agr Res Tech III, SR-11, #12765

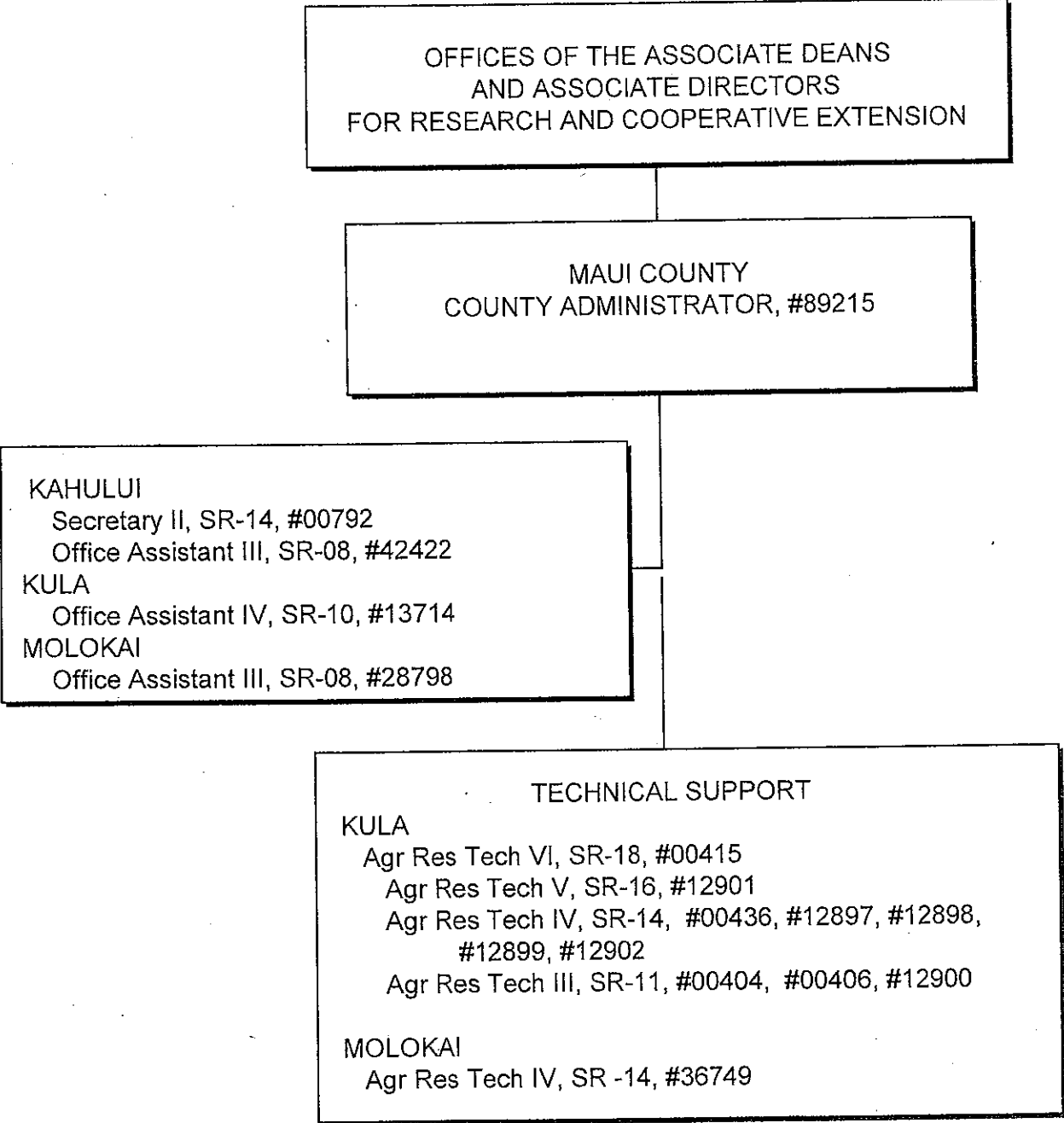
General Funds: 27.00

CHART UPDATED

DATE JUL 01 2008

STATE OF HAWAII
UNIVERSITY OF HAWAII
UNIVERSITY OF HAWAII AT MANOA
COLLEGE OF TROPICAL AGRICULTURE AND HUMAN RESOURCES

MAUI COUNTY
POSITION ORGANIZATION CHART: XLI-W



General Funds: 16.00

CHART UPDATED
DATE JUL 01 2008