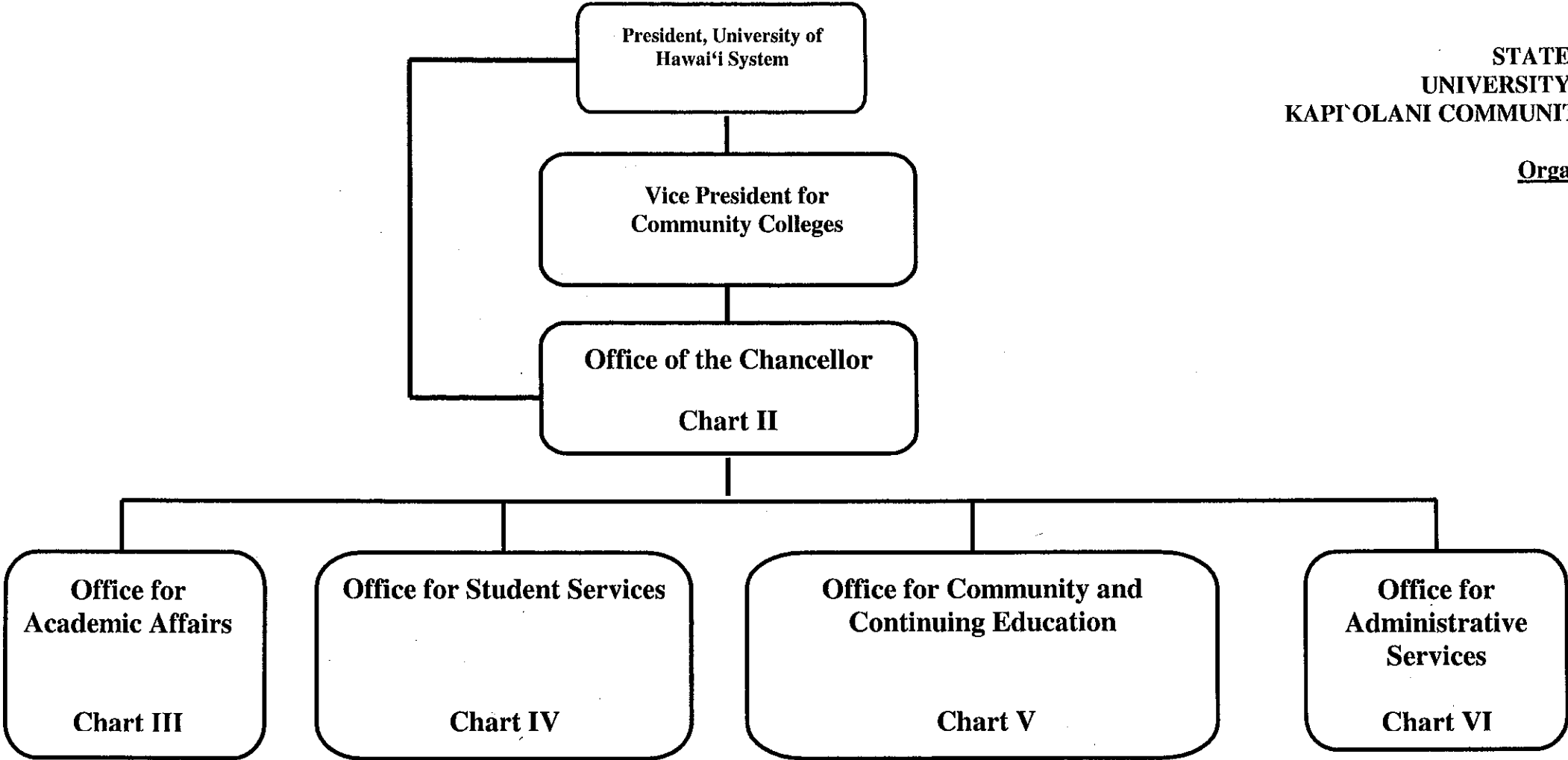


STATE OF HAWAII
UNIVERSITY OF HAWAII
KAPOLANI COMMUNITY COLLEGE

Organization Chart

Chart I



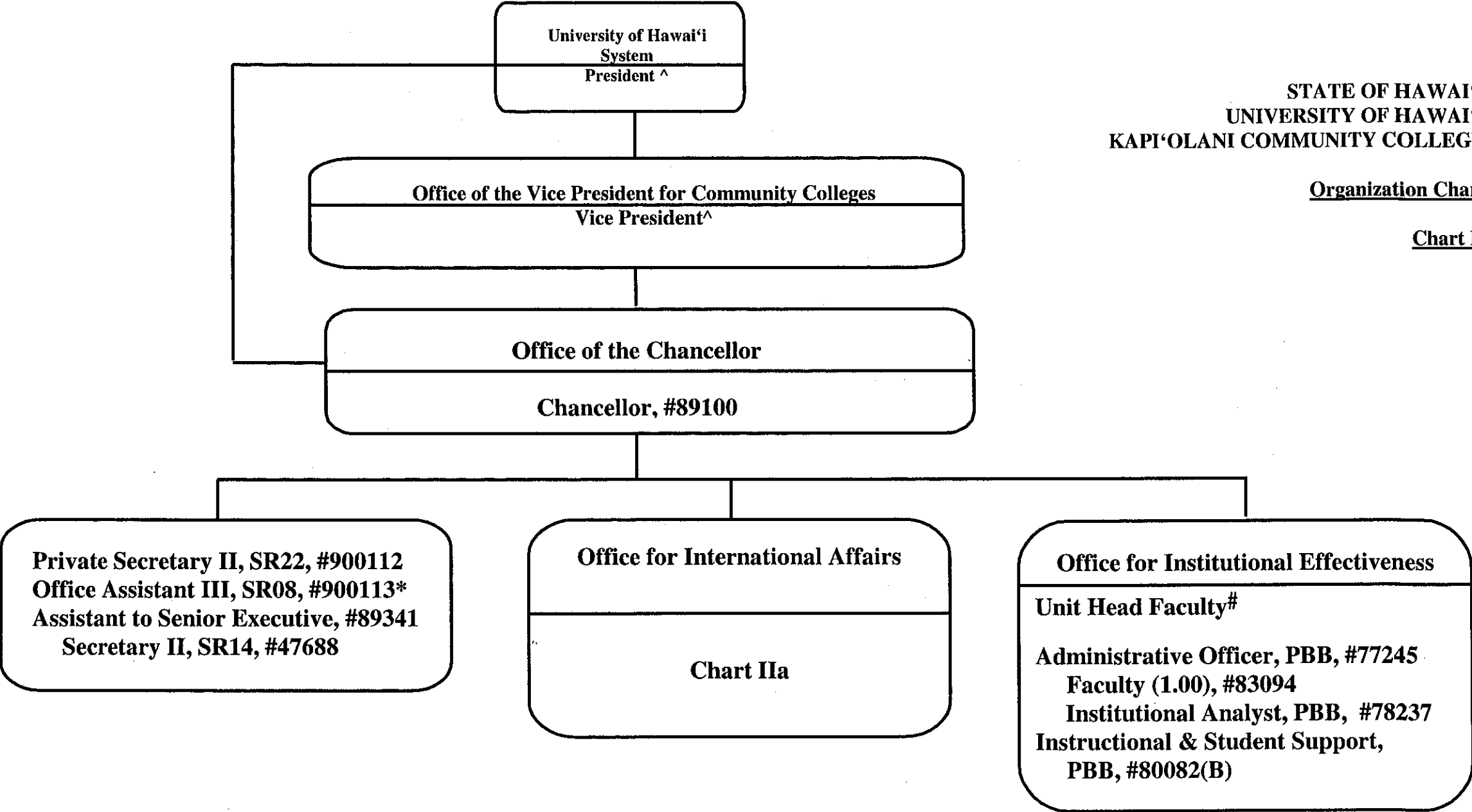
	<u>Perm</u>	<u>Temp</u>
General Fund	389.50	27.50
(B) Special Funds	24.00	

CHART UPDATED
DATE JUL 01 2009

STATE OF HAWAI'I
UNIVERSITY OF HAWAI'I
KAPI'OLANI COMMUNITY COLLEGE

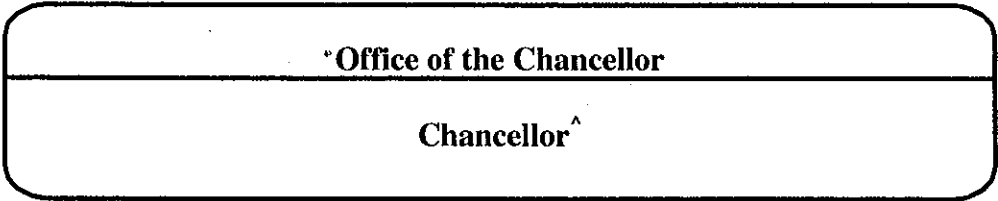
Organization Chart

Chart II



^ Excluded from position count this chart
*Temporary Position
#Unit Head is appointed from among the College faculty.

	Perm	Temp
General Fund	7.00	1.00
(B) Special Funds	1.00	



STATE OF HAWAII
UNIVERSITY OF HAWAII
KAPI'OLANI COMMUNITY COLLEGE

Organization Chart

Chart IIa

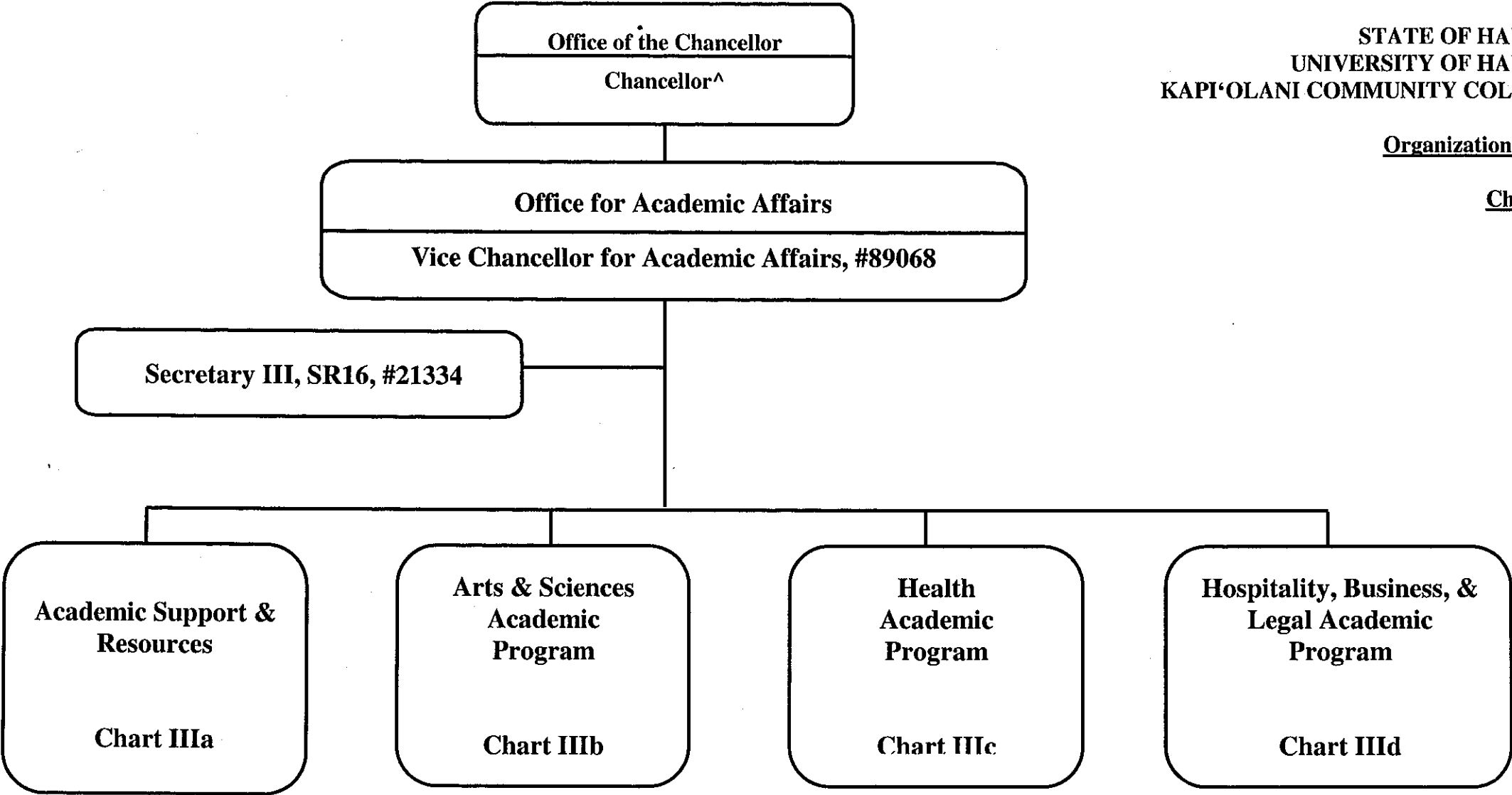
^ Excluded from position count this chart
Unit Head is appointed from among the College faculty
* Temporary position
+ To be redescribed & submitted for classification review

	Perm	Temp
General Fund	2.00	2.00
(B) Special Funds	2.00	

STATE OF HAWAII
UNIVERSITY OF HAWAII
KAPI'OLANI COMMUNITY COLLEGE

Organization Chart

Chart III



^Excluded from position count this chart

General Fund Perm Temp
2.00

Office for Academic Affairs
Vice Chancellor for Academic Affairs^

STATE OF HAWAII
UNIVERSITY OF HAWAII
KAPI'OLANI COMMUNITY COLLEGE

Academic Support & Resources

Organization Chart

Chart IIIa

Galludet University Regional Center for the Pacific Region
Educational Specialist, PBA, #81761

Curriculum Resources and Emphases
Educational Specialist, PBB, #81581

Library & Learning Resources
Head Librarian*

Secretary I, SR12, #44249
Faculty (7.00)

#74847, #83504, #84185, #84438, #86629, #86724, #88040

Library Technician V, SR 11, #39859@+

Library Assistant IV, SR09, #26762@+

Educational Specialist, PBA, #78238@

Library Assistant IV, SR09, #42087, #43605

Educational Specialist, PBA, #77874@

Educational Specialist, PBA, #77500

Educational & Academic Support Specialist, PBA, #81557, #80914T*

Electronic Technician, PBA, #81260

Center for Excellence in Learning, Teaching and Technology [CELTT]
Unit Head*

Faculty (2.00)

#83734, #82386

Information Technology Specialist, PBB, #80748

Information Technology Specialist, PBC, #81384

Information Technology Specialist, PBB, #79922, #80529, #80340, #81627

Information Technology Specialist, PBA, #81220T*

Electronic Technician, PBB, #81277

Electronic Technician, PBB, #80034

Media Specialist, PBB, #80694

Information Technology Specialist, PBB, #81535, #81654

Graphic Artist, PBB, #81060

Secretary II, SR14, #21321

Office Assistant III, SR08, #48451@

^ Excluded from position count this chart

* Temporary position

Head Librarian/Unit Head is appointed from among the faculty positions

+ To be redescribed & submitted for classification review

@ Position supervised by one of the faculty positions

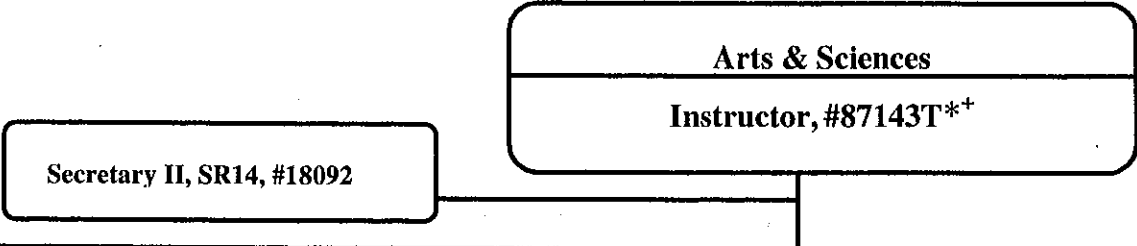
General Fund

Perm
35.00

Temp
2.00

CHART UPDATED

DATE JUL 01 2009



STATE OF HAWAII
UNIVERSITY OF HAWAII
KAPI'OLANI COMMUNITY COLLEGE

Organization Chart

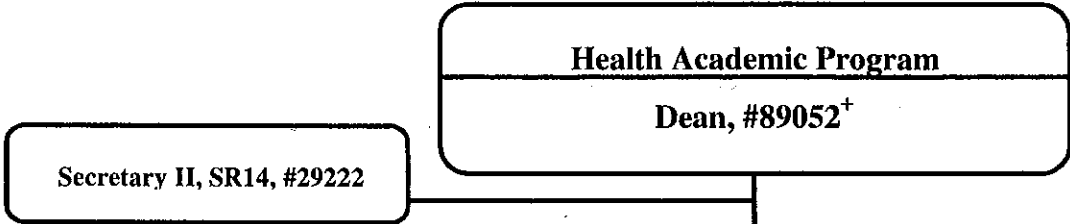
Chart IIIb

Arts & Sciences Academic Program		
Arts & Humanities		
Chairperson%		
Faculty (25.00)		
Full-time: #82052, #82607, #82631, #82803, #82840, #82876, #82925, #82937, #82983, #84470, #84882, #84971, #84974, #86602, #86640, #86695, #86937, #87184, #87402, #87404, #86696T*, 87072T*, #87074T*, #98672F, #98673F		
Secretary II, SR14, #22313		
Information Technology Specialist, PBA, #81068T*		
Languages, Linguistics and Literature		
Chairperson%		
Faculty (39.50)		
Full-time: #82135, #82178, #82231, #82380, #82429, #82447, #82555, #82653, #83123, #83308, #83447, #83521, #83559, #83783, #83795, #83810, #83903, #84327, #84409, #84623, #84754, #86572, #86594, #86595, #86596, #86604, #86798, #86799, #86803, #86809, #86945, #86960, #87120, #87367, #87588, #87583T*, #88032T*, #74813, #74814, #74815		
Part-time: #82540 (0.50 FTE)		
Secretary II, SR 14, #26658		
Mathematics/Science		
Chairperson%		
Faculty (30.00)		
Full-time: #82031, #82394, #82492, #82910, #82981, #83096, #83262, #83357, #83688, #83733, #83939, #83974, #84458, #84836, #86585, #86592, #86600, #86606, #86627, #86631, #86718, #86754, #86827, #86830, #86845, #86959, #87401, #86947T*, #96934F, #96935F		
Educational Specialist, PBB, #81246		
Secretary II, SR14, #22310		
Social Sciences		
Chairperson%		
Faculty (12.00)		
Full-time: #82152, #82706, #82935, #83492, #83560, #83642, #84972, #84973, #86599, #86649, #86938, #87403		
Secretary II, SR 14, #47612		
Arts and Sciences Counseling Unit		
Faculty (6.50) #82364, #83787, #86704, #86757 (0.50FTE), #87603, #99670F, #99671F		
Clerk Steno II, SR09, #34661@		

% Chairperson is appointed from among the faculty positions
* Temporary position
@ Position supervised by one of the faculty position
+ To be redescribed & submitted for classification review

	Perm	Temp
General Fund	115.00	8.00

CHART UPDATED
DATE JUL 01 2009



Organization Chart

Chart IIIc

Health Academic Program		
Emergency Medical Services		
Chairperson%		
Secretary II, SR14, #37300		
Office Assistant III, SR08, #35641		
Faculty (6.00) primarily Oahu based		
Full-time: #86705, #86807, #86808, #87047, #87110, #87440		
Faculty (2.00) primarily Hawaii based		
Full-time: #84739, #84740		
Office Assistant III, SR08, #33867@		
Faculty (1.00) primarily Maui based		
Full-time: #85871		
Office Assistant III, SR08, #33866 (0.50 FTE)		
Health Sciences		
Chairperson%		
Secretary II, SR14, #32952		
Clerk-Steno II, SR09, #40964 (0.50 FTE)		
Faculty (16.00)		
Full-time: #82121, #82162, #82405, #82576, #83310, #83321, #83667, #84223, #84326, #85821, #86384, #86385, #86752, #86882, #86886, #74786		
Nursing		
Chairperson%		
Secretary II, SR14, #18093		
Office Assistant IV, SR10, #42015		
Faculty (39.50)		
Full-time: #82064, #82244, #82513, #84487, #84629, #84655, #86737, #86738, #86740, #86743, #86746, #86747, #86749, #86750, #86751, #86774, #86776, #86777, #86778, #86832, #86833, #86834, #86836, #86837, #86838, #86839, #86840, #98667F, #98668F, #98669F, #98670F, #99663F, #99664F, #99665F, #99666F, #99667F, #99668F		
Part-time: #84308 (.50 FTE), #86736 (.50 FTE), #86739 (.50 FTE), #88072 (.50 FTE), #88074 (.50 FTE)		

% Chairperson is appointed from among the faculty positions
@ Supervised by one of the faculty positions
+ To be redescribed & submitted for classification review

	General Fund	Perm 73.50	Temp
--	--------------	---------------	------

Hospitality, Business, & Legal Education Academic Program

Instructor, #87084T*⁺

Secretary II, SR14, #97150F

STATE OF HAWAII
UNIVERSITY OF HAWAII
KAPI'OLANI COMMUNITY COLLEGE

Organization Chart

Chart IIIId

Hospitality, Business, Legal Education Academic Program

Culinary Institute of the Pacific Program Director, #89029⁺ Chairperson%

Faculty (13.00)

Full-time: #82218, #82683, #82970, #83225, #83460, #83901, #84091, #84103, #84304, #84539, #86597, #86670, #86719

Secretary II, SR14, #16962

Cook III, WS 08, #22318 (B), #32863 (B)

Office Assistant III, SR08, #22319 (B)

Educational & Academic Support Specialist, PBA, #81304 (B), #81420 (B), #81422 (B)

Hospitality and Tourism Chairperson%

Faculty (6.00)

Full-time: #82066, #82467, #83133, #83684, #84369, #86741

Secretary II, SR 14, #44592⁺

Business Academic Program Chairperson%

Faculty (16.00)

Full-time: #82026, #82348, #82503, #82728, #82795, #82931, #83221, #83329, #84150, #84337, #86591, #86593, #86598, #87123, #87648, #87144T*

Secretary II, SR14, #22312

Legal Academic Program Coordinator%

Faculty (2.50)

Full-time: #83071, #83360, #83453 (0.50 FTE)

Office Assistant III, SR08, #47900 (0.50 FTE)

% Coordinator is appointed from among the faculty positions

+ To be redescribed & submitted for classification

* Temporary position

	<u>Perm</u>	<u>Temp</u>
General Fund	42.00	2.00
(B) Special Funds	6.00	

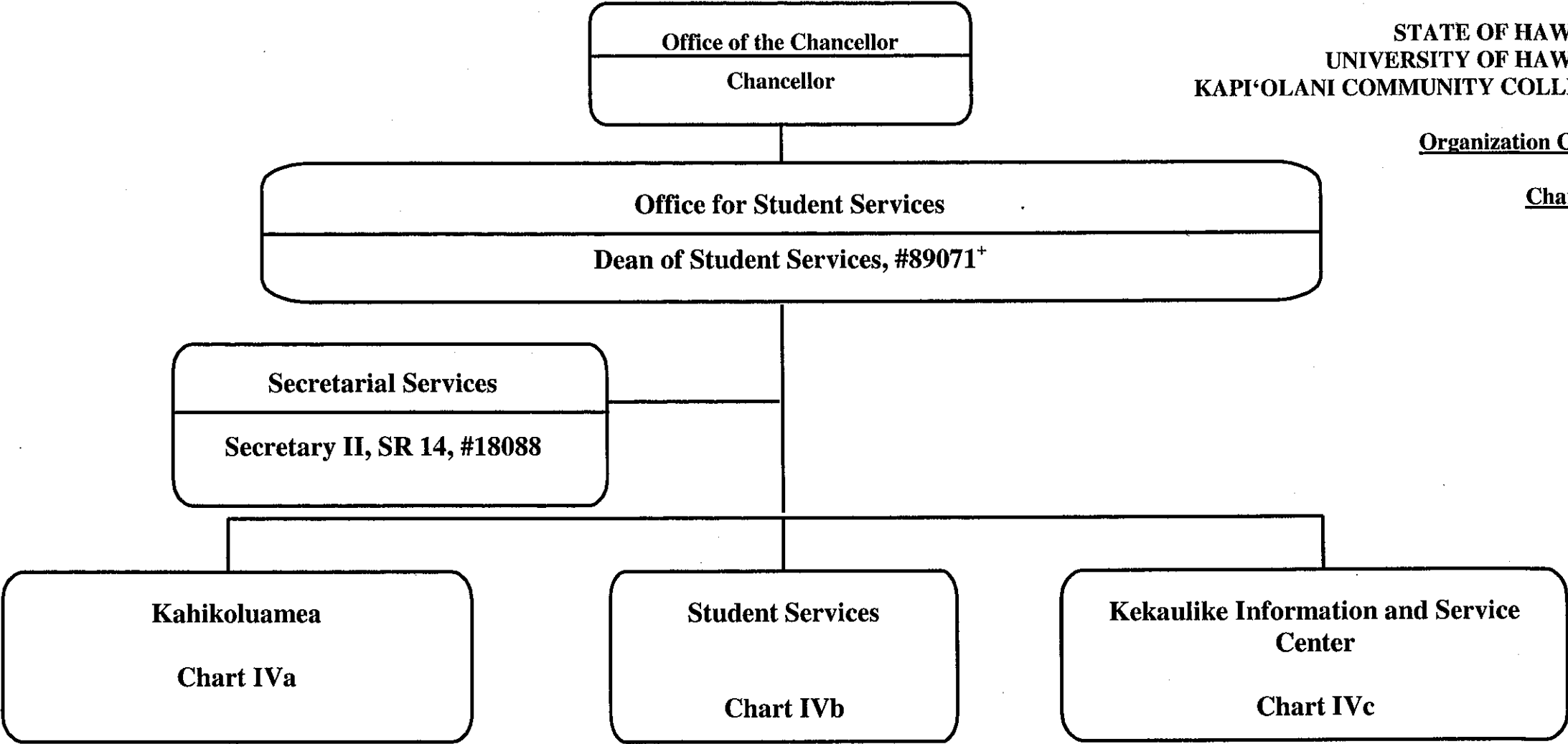
CHART UPDATED

DATE JUL 01 2009

STATE OF HAWAII
UNIVERSITY OF HAWAII
KAPI'OLANI COMMUNITY COLLEGE

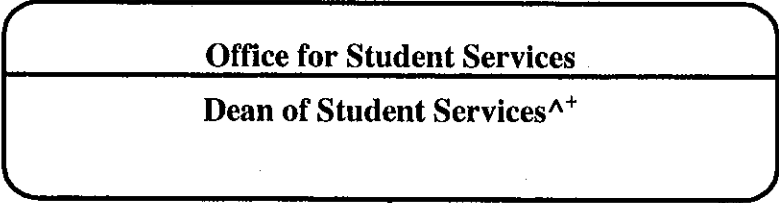
Organization Chart

Chart IV



^ Excluded from position count this chart
+ To be redescribed & submitted for classification

General Fund Perm Temp
2.00



STATE OF HAWAI'I
UNIVERSITY OF HAWAI'I
KAPI'OLANI COMMUNITY COLLEGE

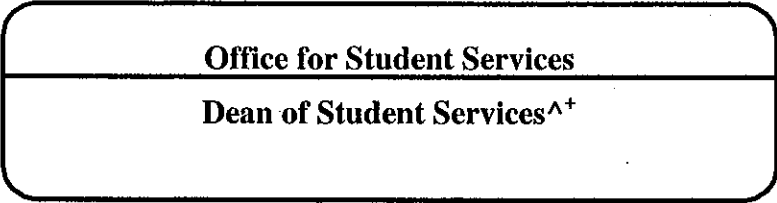
Organization Chart

Chart IVa

Kahikoluamea			
Chairperson [%]			
Secretary II, SR14, #14214			
Faculty (17.00)			
Full-time: #74783, #74833, #82068, #82232, #82776, #82389, #82874, #83538, #83870, #83967			
#84072, #87612T*, #98674F, #98675F, #99669F, #99672F, #99673F			
Approximately 16.00 FTE faculty will be assigned in whole or part from the Arts & Sciences			
Academic Program on an annual basis			
Office Assistant III, SR-08, #99160F			

% Chairperson is appointed from among the faculty positions
^ Excluded from position count this chart
+ To be redescribed

General Fund	<u>Perm</u>	<u>Temp</u>
	18.00	1.00



STATE OF HAWAI'I
UNIVERSITY OF HAWAI'I
KAPI'OLANI COMMUNITY COLLEGE

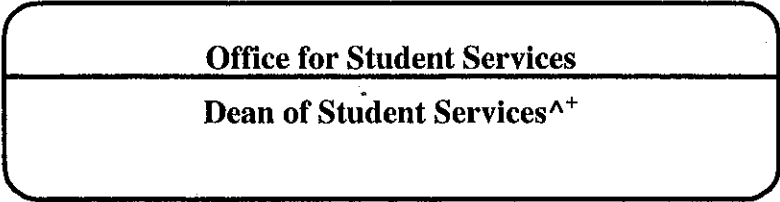
Organization Chart

Chart IVb

Student Services
Faculty (4.50) #83453 (0.50 FTE), #87649, #83387, #82685, #86603 Special Services Unit Head# Clerk-Steno II, SR09, #27004+ Student Services Specialist, PBA, #96660F*+ (0.50 FTE)

- # Unit Head is appointed from among the faculty positions
- + To be redescribed & submitted for classification review
- ^ Excluded from position count this chart
- * Temporary position

	<u>Perm</u>	<u>Temp</u>
General Fund	5.50	0.50



STATE OF HAWAI'I
UNIVERSITY OF HAWAI'I
KAPI'OLANI COMMUNITY COLLEGE

Organization Chart

Chart IVc

Kekaulike Information and Service Center			
<u>Kekaulike Information and Service Center</u>			
Student Services Specialist, PBB, #81615			
Student Services Specialist, PBB, #80257			
Educational & Academic Support Specialist, PBA, #78204T*			
Student Services Specialist, PBB, #78203T*			
Office Assistant IV, SR10, #11485, #18086, #44254, #54813, #27015, #54811			
Student Services Specialist, PBB, #77724			
Student Services Specialist, PBB, #77331 (B)			
Student Services Specialist, PBA, #77953T*			
Student Services Specialist, PBB, #81547			
Student Services Specialist, PBB, #81878, #81887			
Student Services Specialist, PBA, #77773			
Office Assistant IV, SR10, #09169, #22315, #41320(B), #44160			

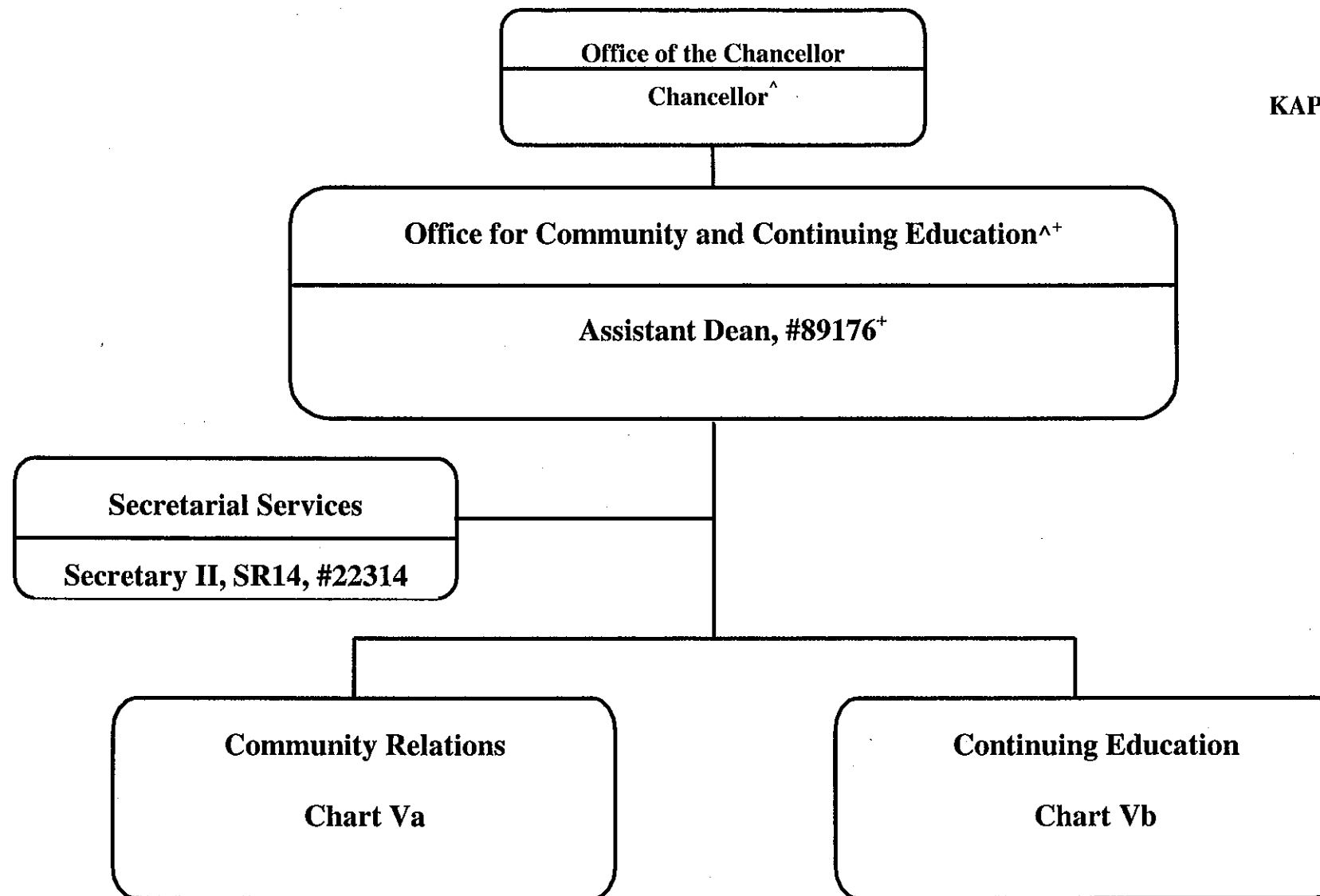
^ Excluded from position count this chart
* Temporary position

	<u>Perm</u>	<u>Temp</u>
General Fund	16.00	3.00
(B) Special Fund	2.00	

STATE OF HAWAII
UNIVERSITY OF HAWAII
KAPI'OLANI COMMUNITY COLLEGE

Organization Chart

Chart V



* To be redescribed & submitted for classification review

^ Excluded from position count this chart

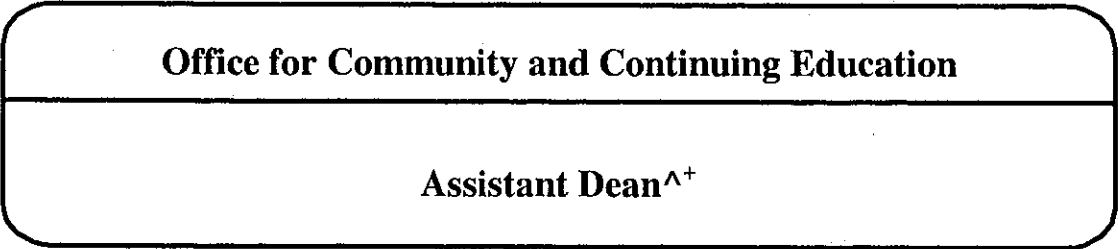
General Fund

Perm
2.00

Temp

CHART UPDATED

DATE JUL 01 2009



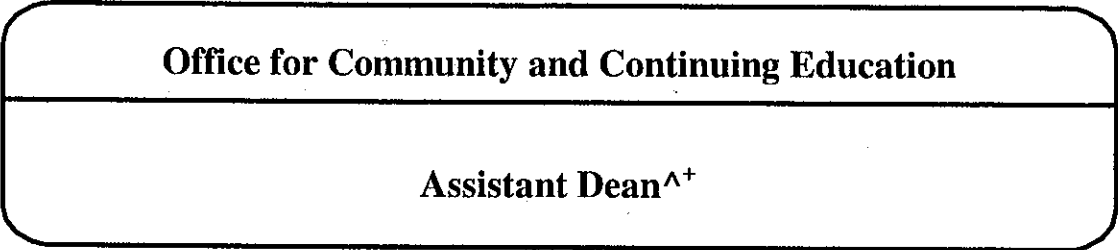
STATE OF HAWAI'I
UNIVERSITY OF HAWAI'I
KAPI'OLANI COMMUNITY COLLEGE

Organization Chart

Chart Va

^ Excluded from position count this chart
* Temporary position
Unit head is appointed from among the faculty positions

General Fund	<u>Perm</u>	<u>Temp</u>
	1.00	1.00



STATE OF HAWAII
UNIVERSITY OF HAWAII
KAPI'OLANI COMMUNITY COLLEGE

Organization Chart

Chart Vb

Continuing Education	
Unit Head#	
Faculty (13.00)	
	#74784, #74785, #74787, #83771, #86701(B), #86702(B), #86706(B), #86711(B), #86715, #86742, #86794(B), #86944(B), #87102
	Educational Specialist, PBB, #77025(B), #78302, #80778(B), #81429(B), #81923(B)
	Educational Specialist, PBA, #80617(B)
	Office Assistant III, SR08, #900374 (0.50 FTE)
	Clerk Steno III, SR11, #35948 (B)

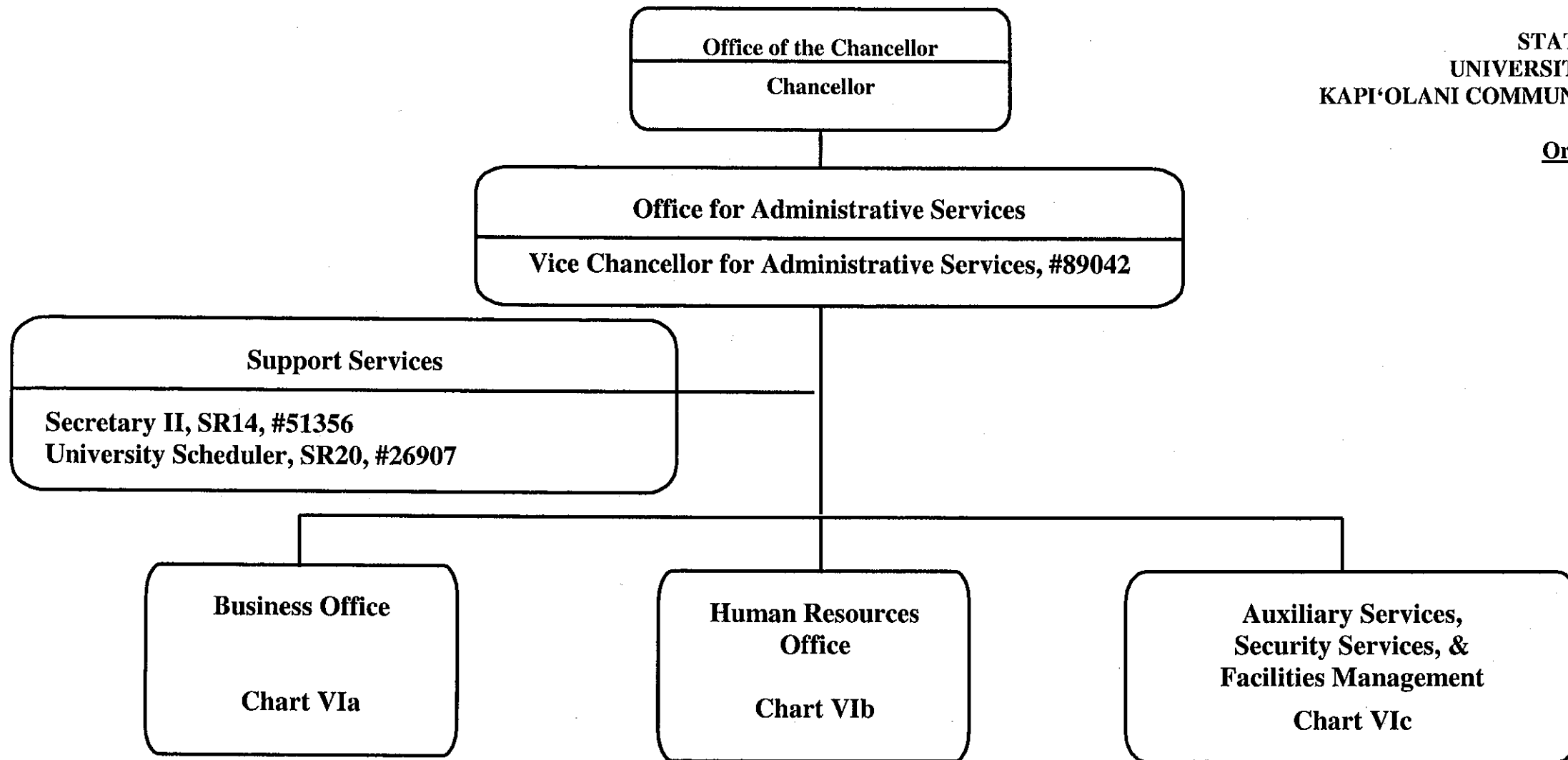
^ Excluded from position count this chart
+ To be redescribed & submitted for classification review
Unit head is appointed from among the faculty positions

	Perm	Temp
General Fund	8.50	
(B) Special Funds	12.00	

STATE OF HAWAII
UNIVERSITY OF HAWAII
KAPI'OLANI COMMUNITY COLLEGE

Organization Chart

Chart VI



General Fund Perm
3.00 Temp

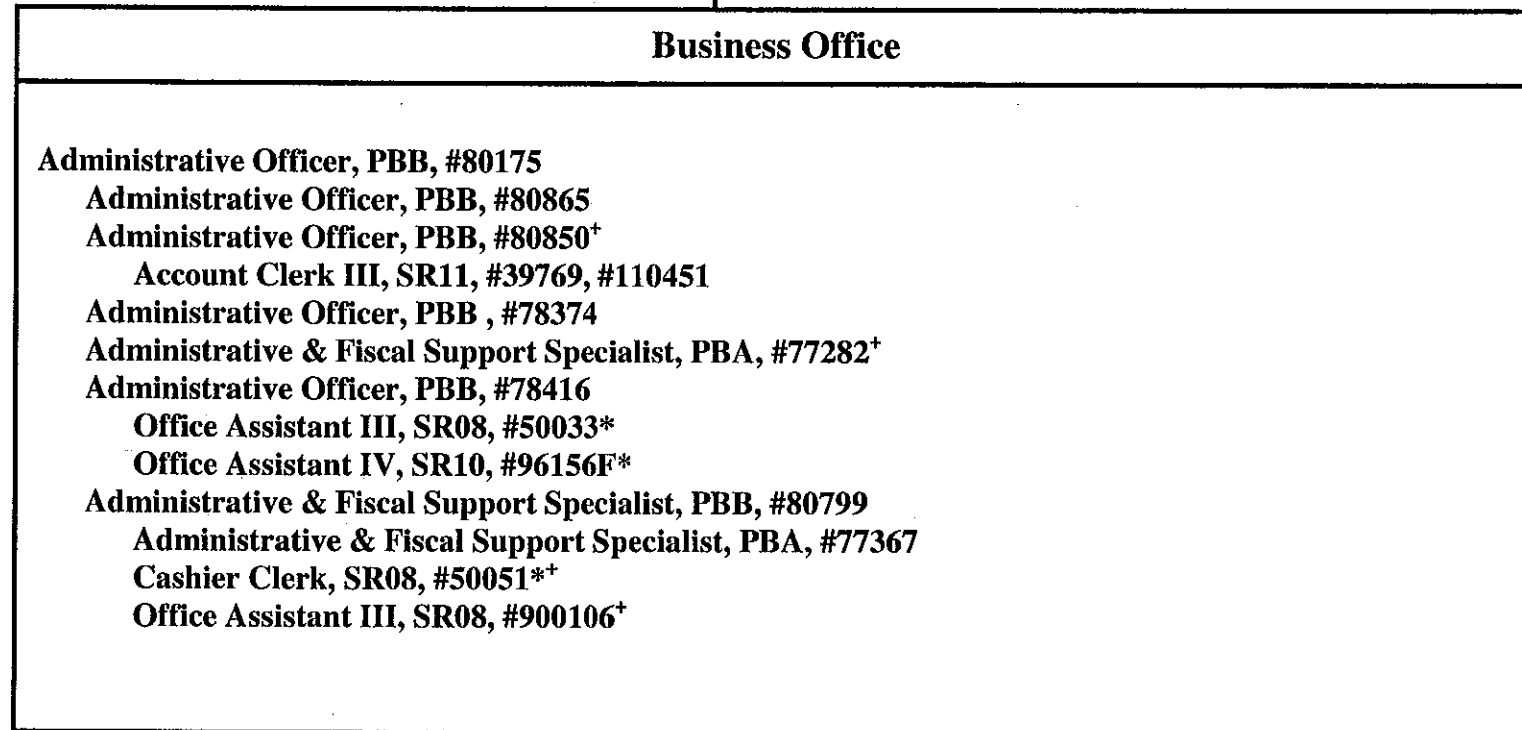
CHART UPDATED
DATE JUL 01 2009

Office for Administrative Services
Vice Chancellor for Administrative Services[^]

**STATE OF HAWAII
UNIVERSITY OF HAWAII
KAPI'OLANI COMMUNITY COLLEGE**

Organization Chart

Chart VIa



[^] Excluded from position count this chart

⁺ To be redescribed & submitted for classification review

* Temporary position

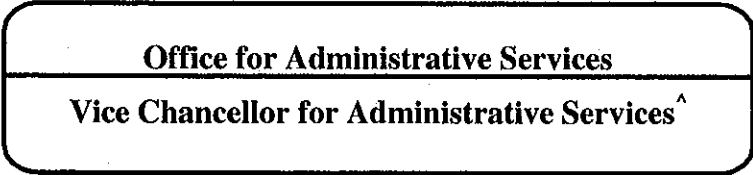
General Fund
(B) Special Fund

Perm
11.00

Temp
3.00

CHART UPDATED

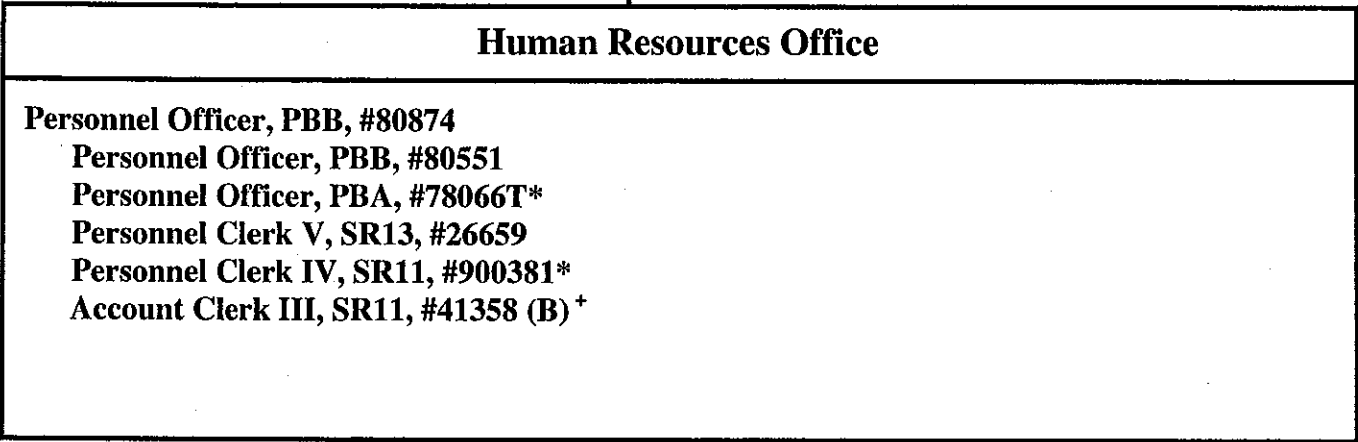
DATE JUL 01 2009



STATE OF HAWAI'I
UNIVERSITY OF HAWAI'I
KAPI'OLANI COMMUNITY COLLEGE

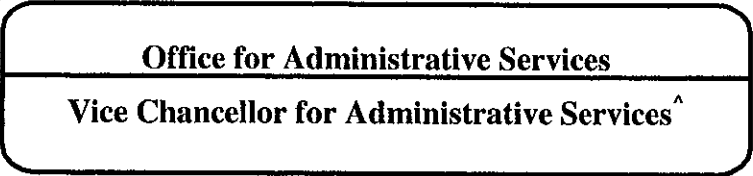
Organization Chart

Chart VIb



^ Excluded from position count this chart
* Temporary position
+ To be redescribed

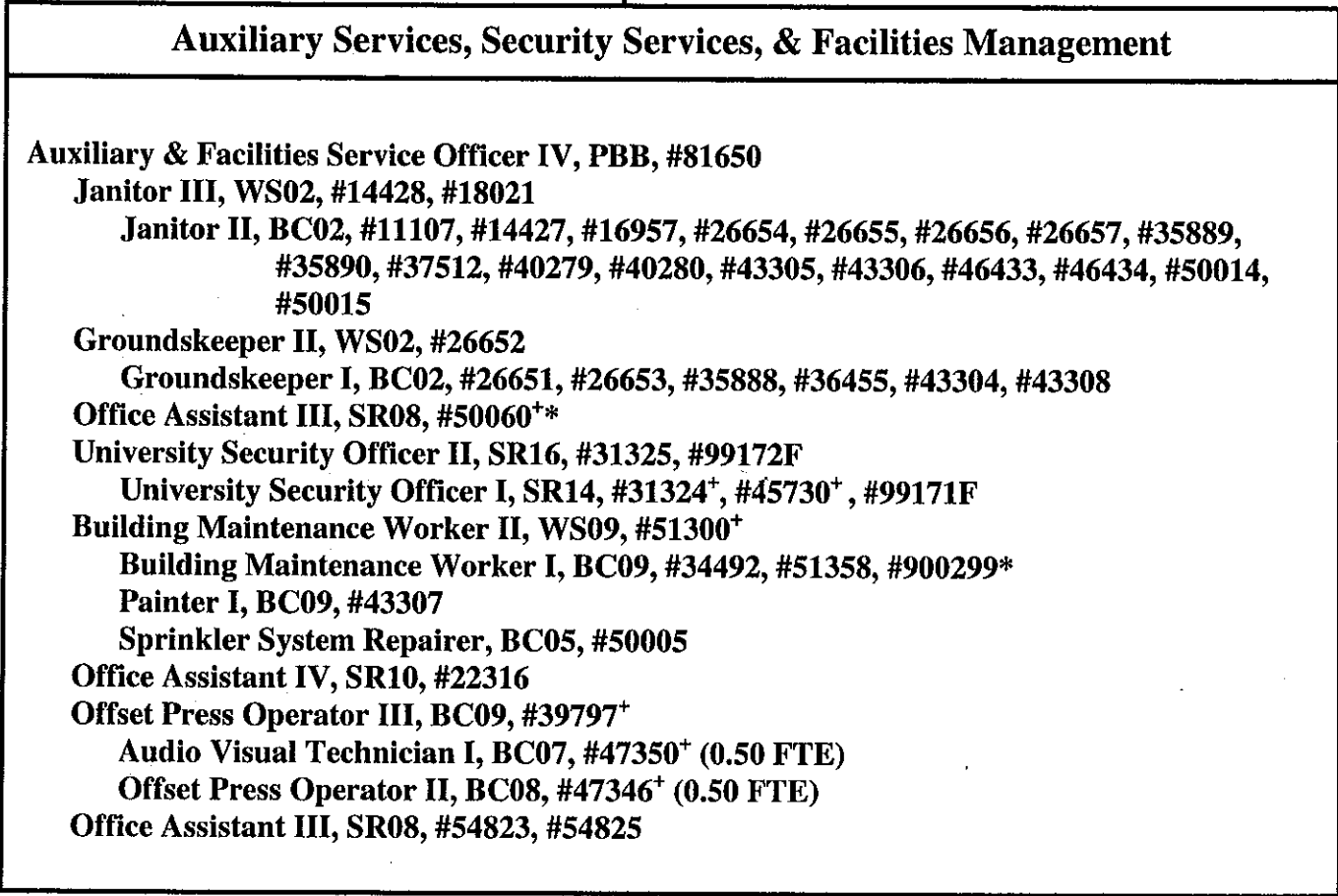
	<u>Perm</u>	<u>Temp</u>
General Fund	3.00	2.00
(B) Special Fund	1.00	



STATE OF HAWAI'I
UNIVERSITY OF HAWAI'I
KAPI'OLANI COMMUNITY COLLEGE

Organization Chart

Chart VIc



[^] Excluded from position count this chart
* Temporary position
+ To be redescribed & submitted for classification review

	General Fund	Perm 43.00	Temp 2.00
--	--------------	---------------	--------------