

State of Hawai'i
University of Hawai'i
University of Hawai'i at Mānoa
COLLEGES OF ARTS AND SCIENCES
COLLEGE OF NATURAL SCIENCES
OFFICE OF THE DEAN
ORGANIZATION CHART

CHART I

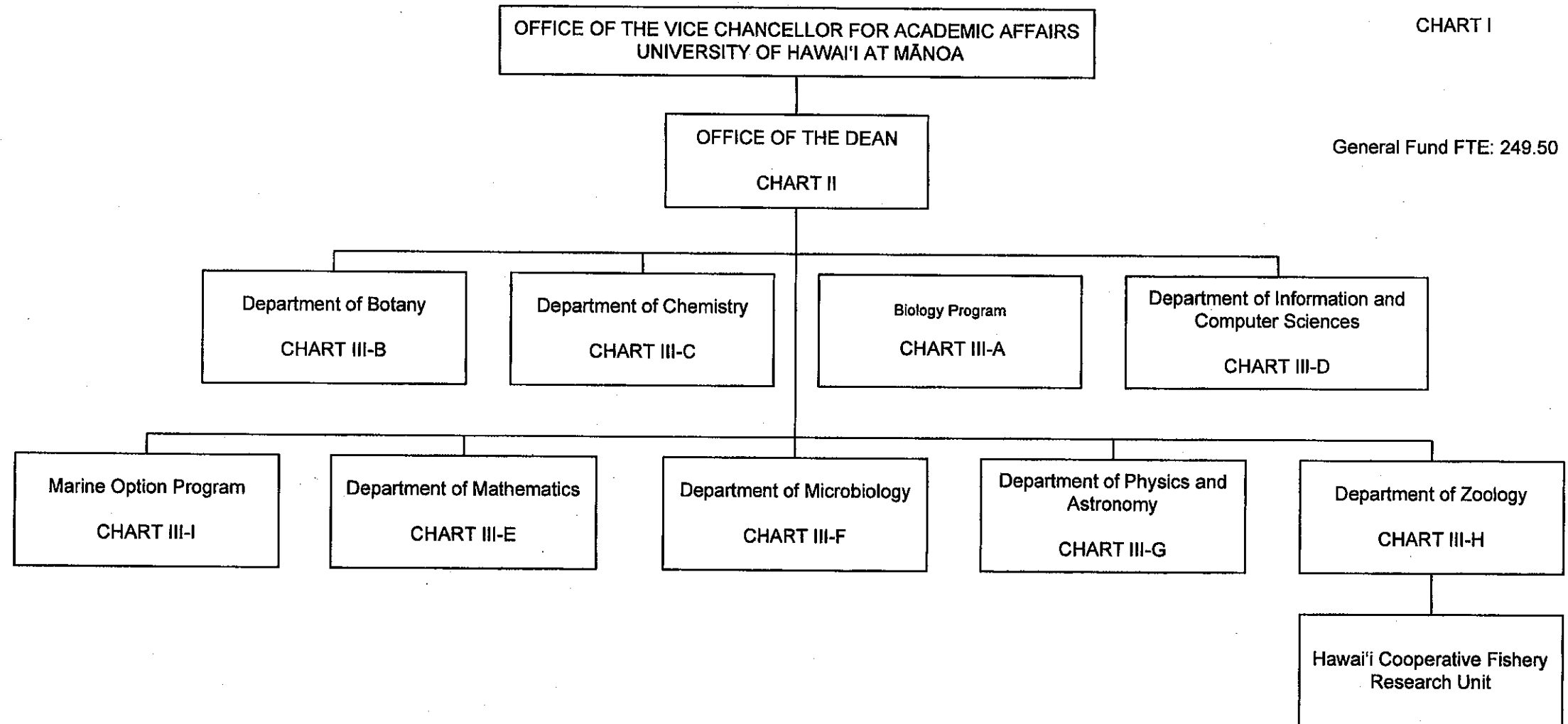
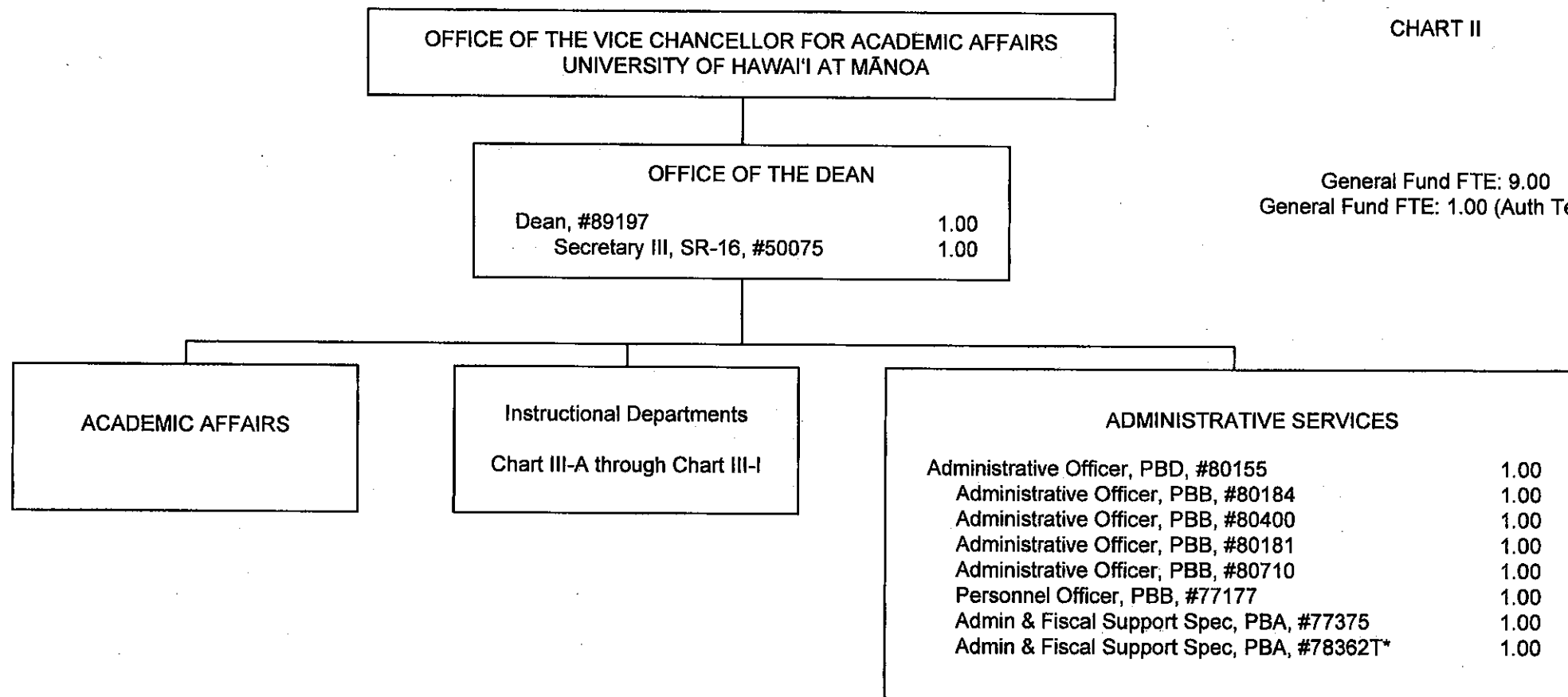


CHART UPDATED
JUL 01 2009
DATE _____

State of Hawai'i
 University of Hawai'i
 University of Hawai'i at Mānoa
 COLLEGES OF ARTS AND SCIENCES
 COLLEGE OF NATURAL SCIENCES
 OFFICE OF THE DEAN
 POSITION ORGANIZATION CHART

CHART II



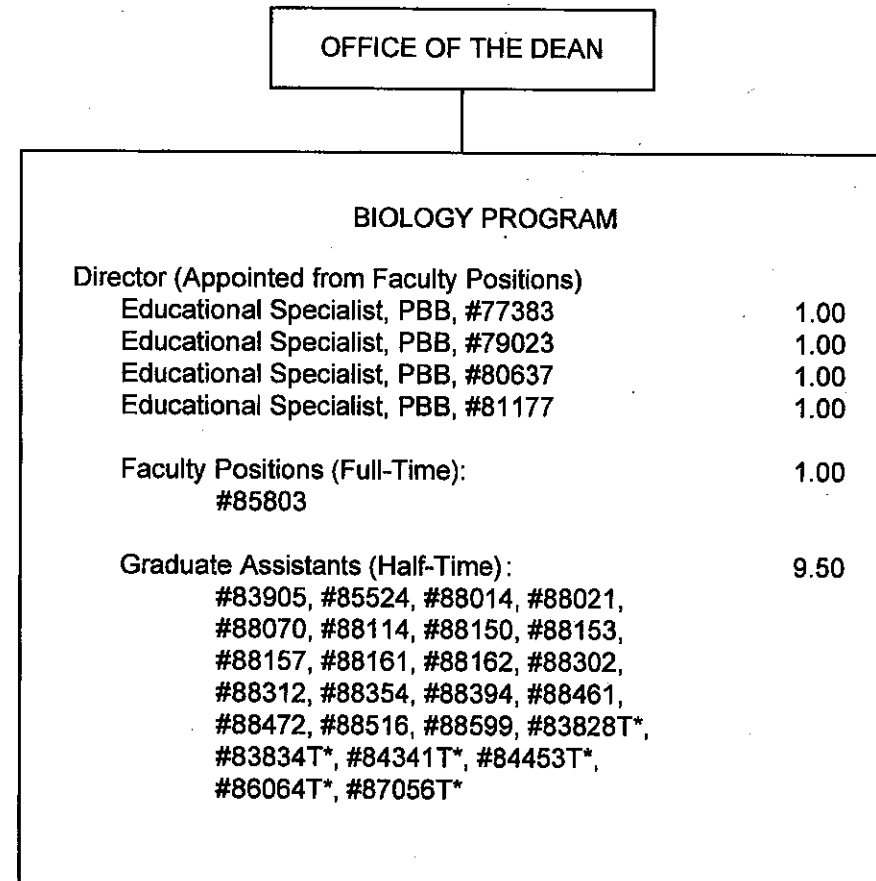
General Fund FTE: 9.00
 General Fund FTE: 1.00 (Auth Temp)

*Appropriated Temporary Position

CHART UPDATED
 DATE JUL 01 2009

State of Hawai'i
University of Hawai'i
University of Hawai'i at Mānoa
COLLEGES OF ARTS AND SCIENCES
COLLEGE OF NATURAL SCIENCES
BIOLOGY PROGRAM
POSITION ORGANIZATION CHART

CHART III-A



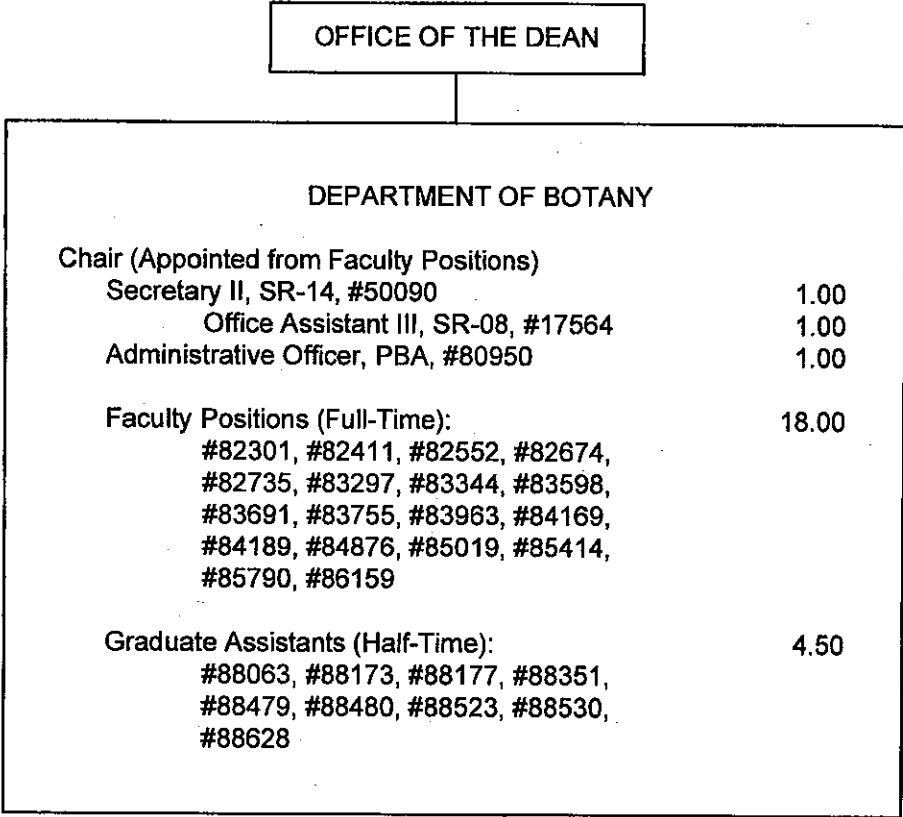
General Fund FTE: 14.50
General Fund FTE: 3.00 (Auth Temp)

*Appropriated Temporary Positions

CHART UPDATED
DATE JUL 01 2009

State of Hawai'i
University of Hawai'i
University of Hawai'i at Mānoa
COLLEGES OF ARTS AND SCIENCES
COLLEGE OF NATURAL SCIENCES
DEPARTMENT OF BOTANY
POSITION ORGANIZATION CHART

CHART III-B



General Fund FTE: 25.50

State of Hawai'i
University of Hawai'i
University of Hawai'i at Mānoa
COLLEGES OF ARTS AND SCIENCES
COLLEGE OF NATURAL SCIENCES
DEPARTMENT OF CHEMISTRY
POSITION ORGANIZATION CHART

CHART III-C

General Fund FTE: 44.00

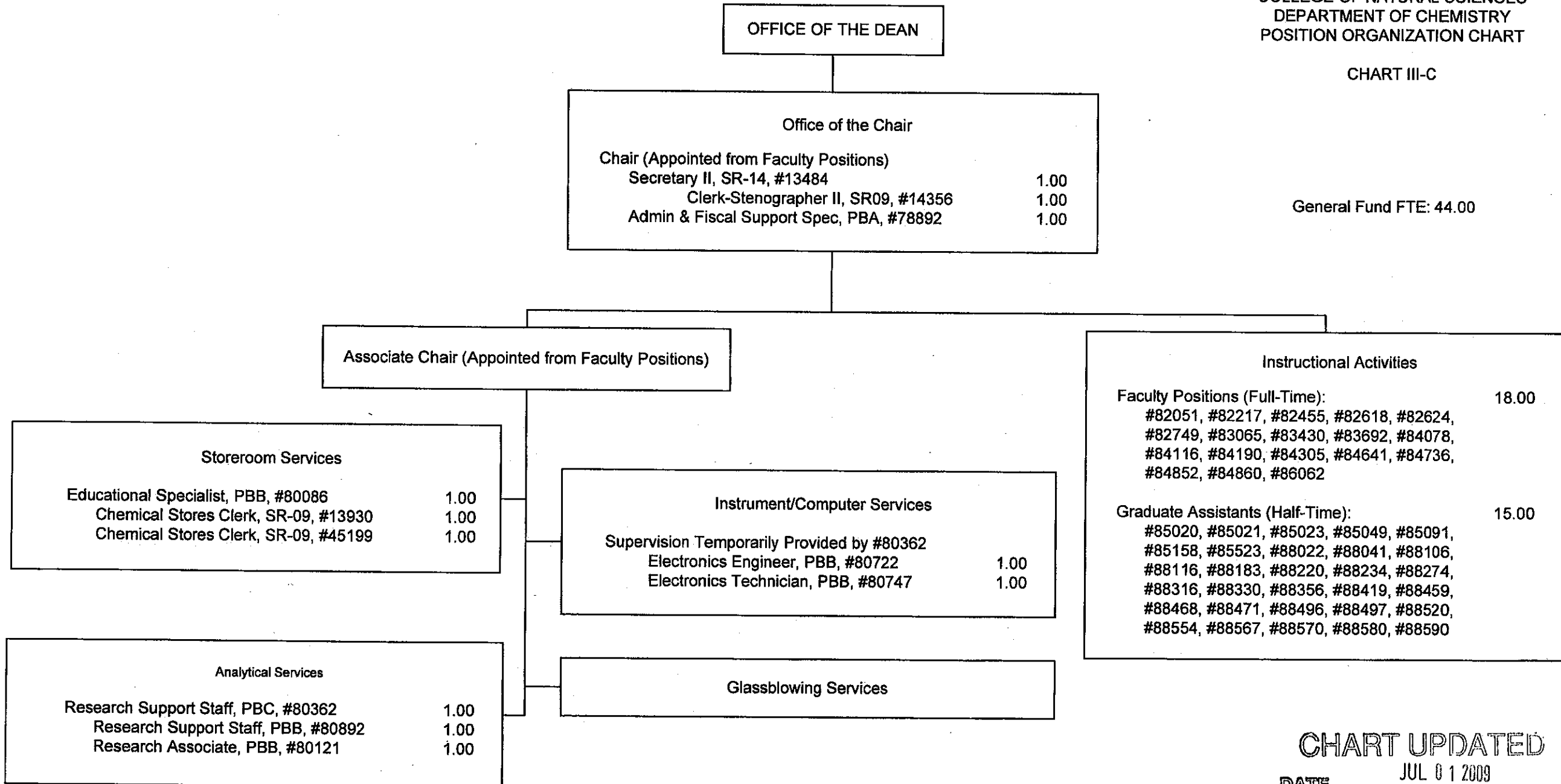


CHART UPDATED
JUL 01 2009
DATE _____

State of Hawai'i
University of Hawai'i
University of Hawai'i at Mānoa
COLLEGES OF ARTS AND SCIENCES
COLLEGE OF NATURAL SCIENCES
DEPARTMENT OF INFORMATION
AND COMPUTER SCIENCES
POSITION ORGANIZATION CHART

CHART III-D

OFFICE OF THE DEAN

DEPARTMENT OF INFORMATION AND COMPUTER SCIENCES

Chair (Appointed from Faculty Positions)

Secretary II, SR-14, #18055	1.00
Network Specialist, PBA, #81194	1.00
Computer Specialist, PBB, #79024	1.00
System Programmer, PBB, #81447	1.00
Admin & Fiscal Support Specialist, PBA, #81985	1.00

Faculty Positions (Full-Time):

30.00

#82070, #82120, #82287, #82446,
#82468, #82626, #82649, #82737,
#82787, #82794, #82835, #83074,
#83083, #83203, #83381, #83393,
#83408, #83443, #83602, #83857,
#83889, #83916, #83999, #84029,
#84270, #84282, #84427, #87503,
#87504, #88680

Faculty Position (Half-Time):

#85651T*

Graduate Assistants (Half-Time):

5.00

#85650, #86422, #86464, #86465,
#86466, #86467, #87556, #87557,
#87558, #88563

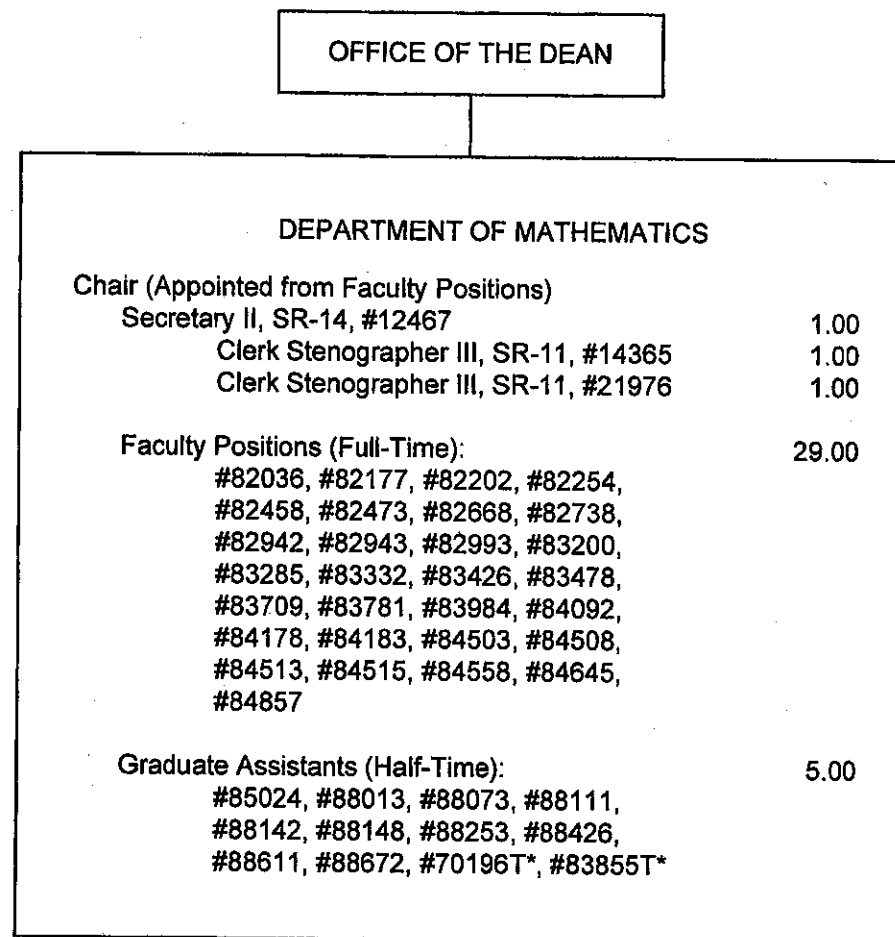
General Fund FTE: 40.00
General Fund FTE: 0.50 (Auth Temp)

*Appropriated Temporary Position

CHART UPDATED
JUL 01 2009
DATE _____

State of Hawai'i
University of Hawai'i
University of Hawai'i at Mānoa
COLLEGES OF ARTS AND SCIENCES
COLLEGE OF NATURAL SCIENCES
DEPARTMENT OF MATHEMATICS
POSITION ORGANIZATION CHART

CHART III-E



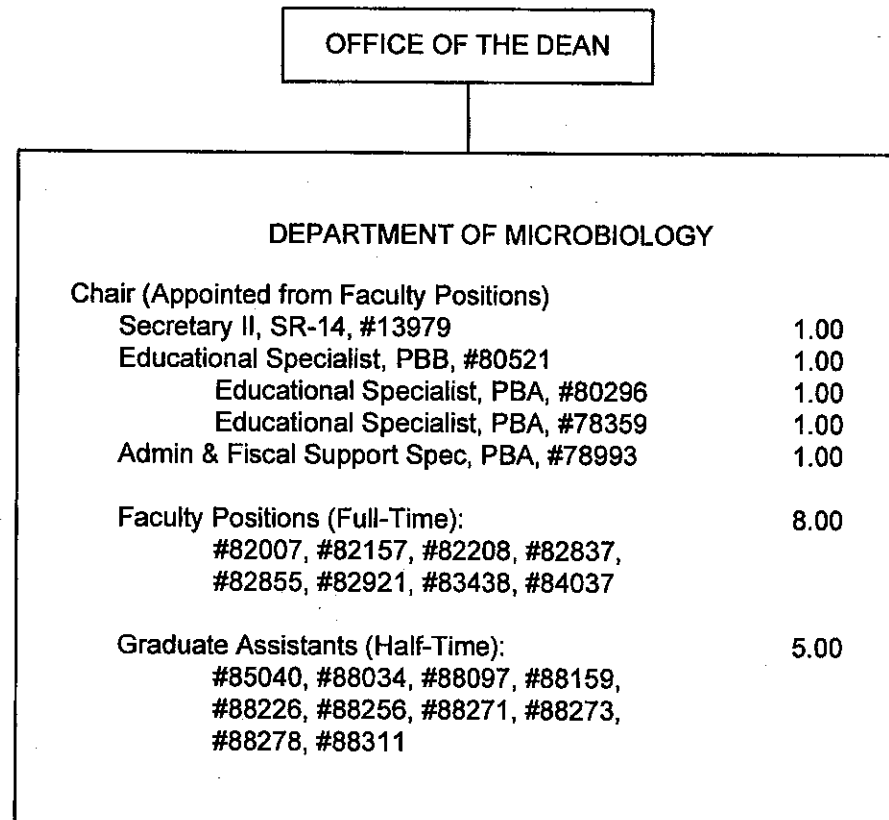
General Fund FTE: 37.00
General Fund FTE: 1.00 (Auth Temp)

*Appropriated Temporary Positions

CHART UPDATED
JUL 01 2009
DATE _____

State of Hawai'i
University of Hawai'i
University of Hawai'i at Mānoa
COLLEGES OF ARTS AND SCIENCES
COLLEGE OF NATURAL SCIENCES
DEPARTMENT OF MICROBIOLOGY
POSITION ORGANIZATION CHART

CHART III-F



General Fund FTE: 18.00

CHART UPDATED

DATE JUL 01 2009

State of Hawai'i
University of Hawai'i
University of Hawai'i at Mānoa
COLLEGES OF ARTS AND SCIENCES
COLLEGE OF NATURAL SCIENCES
DEPARTMENT OF PHYSICS AND ASTRONOMY
POSITION ORGANIZATION CHART

CHART III-G

OFFICE OF THE DEAN

DEPARTMENT OF PHYSICS AND ASTRONOMY

Chair (Appointed from Faculty Positions)

Secretary II, SR-14, #12918	1.00
Office Assistant III, SR-08, #14355	1.00
Scientific Instrument Technician, PBB, #80706	1.00
Scientific Instrument Technician, PBB, #80703	1.00

Faculty Positions (Full-Time):

22.00

#82206, #82314, #82633, #82770,
#82875, #83534, #83547, #83790,
#83813, #83861, #83910, #83915,
#83926, #84235, #84240, #84398,
#84494, #84587, #84675, #84897,
#88615, #84773

Graduate Assistants (Half-Time):

7.00

#85506, #88055, #88057, #88176,
#88198, #88270, #88309, #88385,
#88389, #88441, #88478, #88524,
#88593, #88650, #70197T*, #83844T*,
#83849T*, #84184T*

General Fund FTE: 33.00
General Fund FTE: 2.00 (Auth Temp)

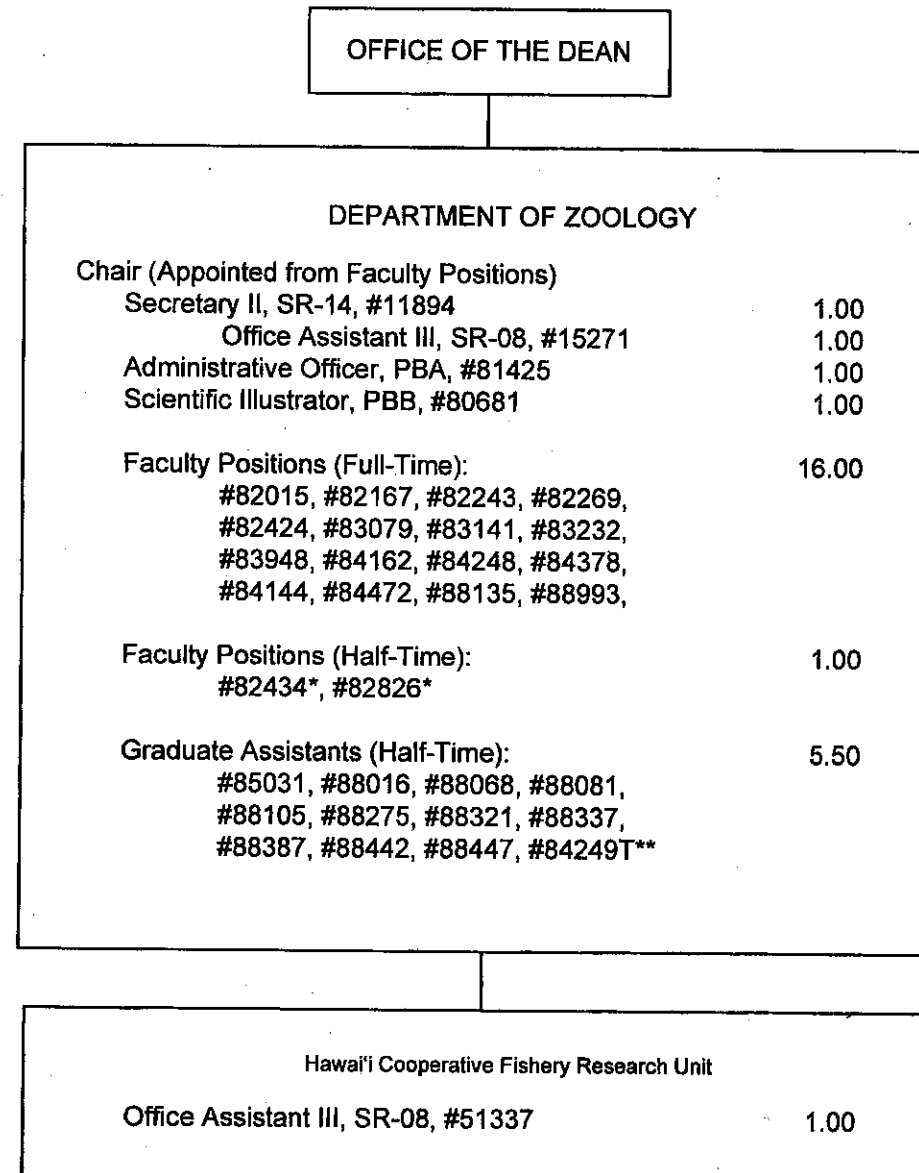
*Appropriated Temporary Positions

CHART UPDATED

DATE JUL 01 2009

State of Hawai'i
University of Hawai'i
University of Hawai'i at Mānoa
COLLEGES OF ARTS AND SCIENCES
COLLEGE OF NATURAL SCIENCES
DEPARTMENT OF ZOOLOGY
POSITION ORGANIZATION CHART

CHART III-H



General Fund FTE: 27.50
General Fund FTE: 0.50 (Auth Temp)

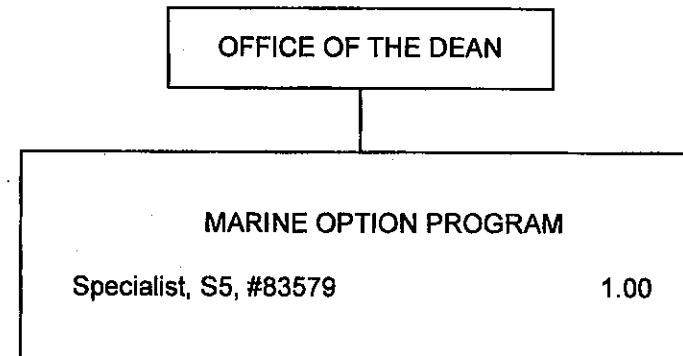
CHART UPDATED

JUL 01 2009
DATE _____

* Joint Appointments
** Appropriated Temporary Position

State of Hawai'i
University of Hawai'i
University of Hawai'i at Mānoa
COLLEGES OF ARTS AND SCIENCES
COLLEGE OF NATURAL SCIENCES
MARINE OPTION PROGRAM
POSITION ORGANIZATION CHART

CHART III-I



General Fund FTE: 1.00

CHART UPDATED
JUL 01 2009
DATE _____